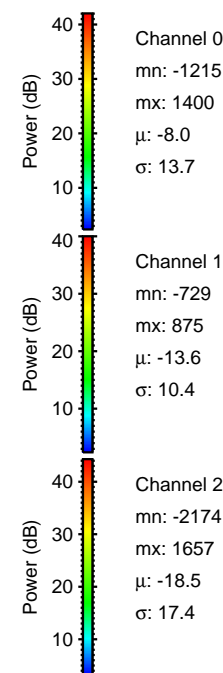
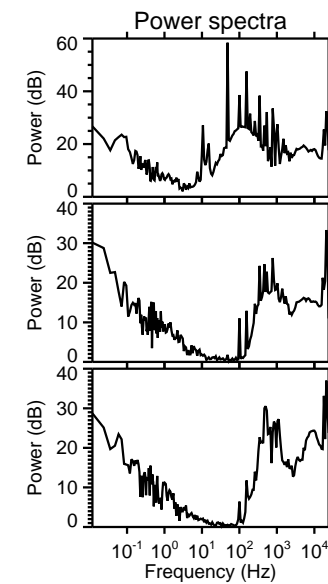
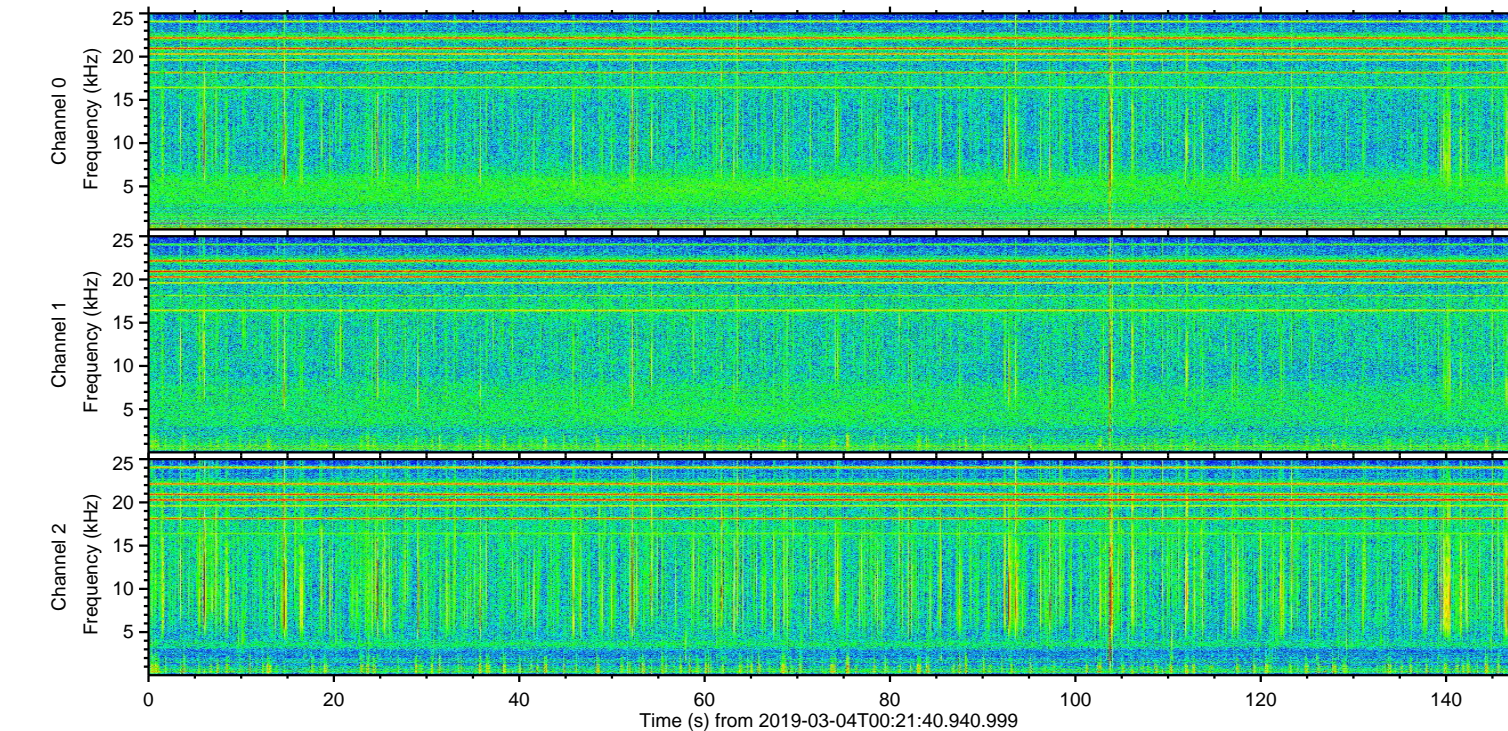
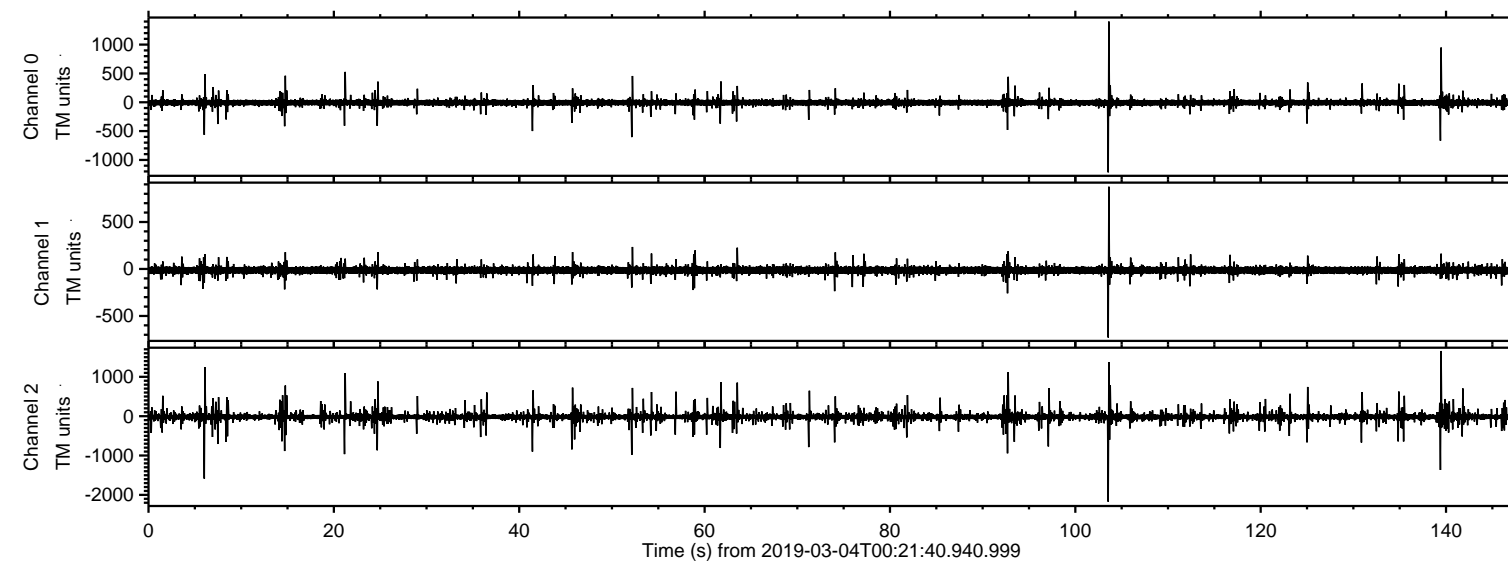


# ELMAVAN 3D WAVEFORMS (Measured data sampled at 50 kHz) 51000 packets of 144 samples from 2019-03-04T00:21:40.940.999.

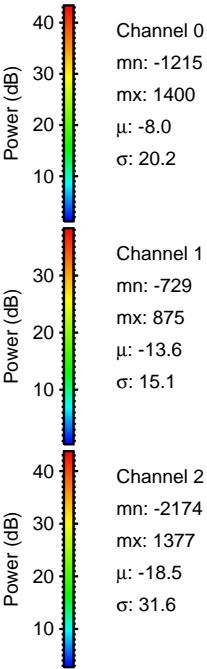
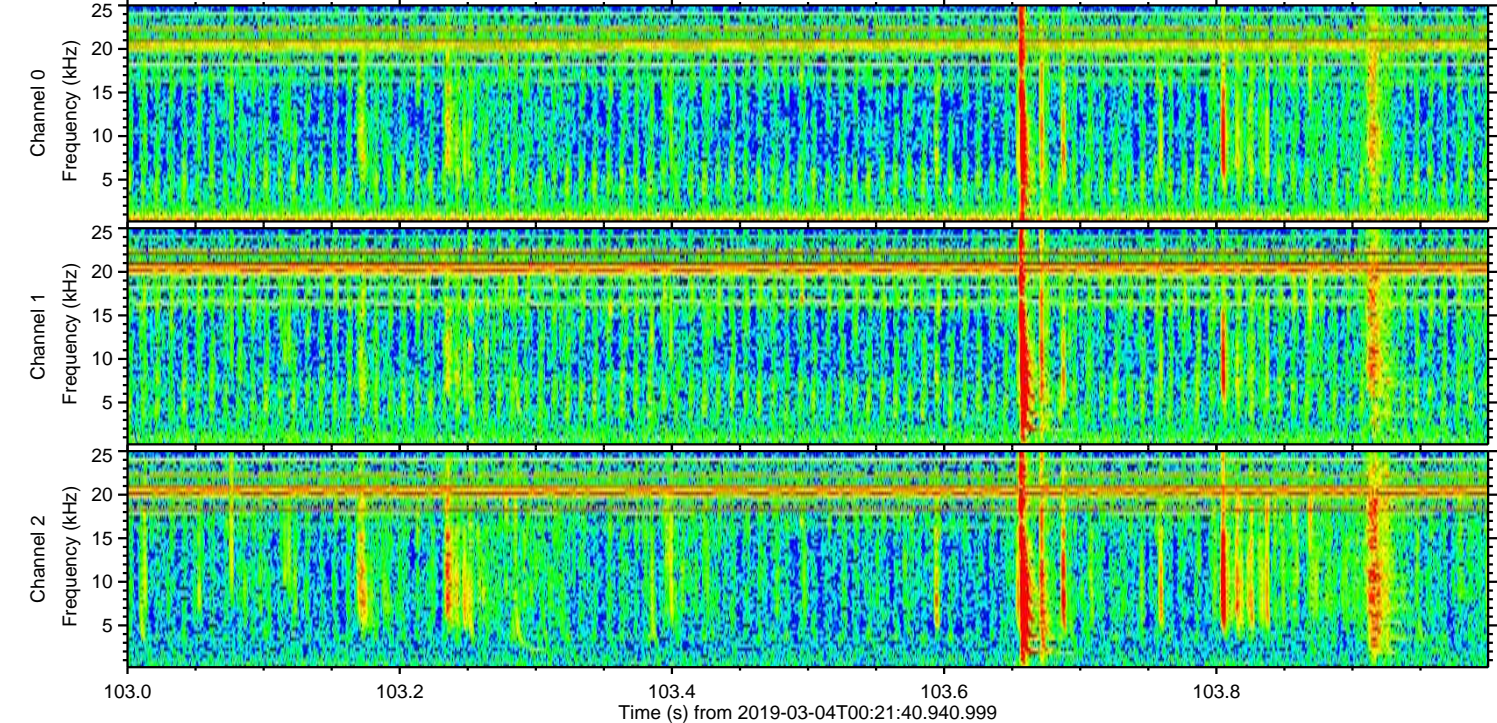
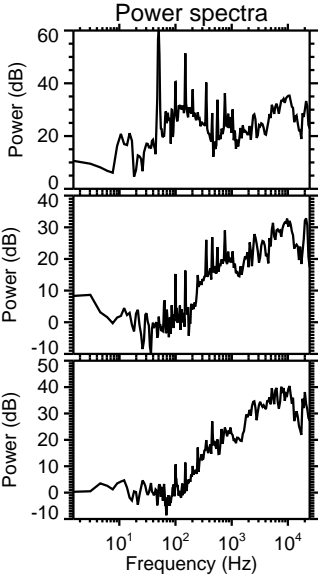
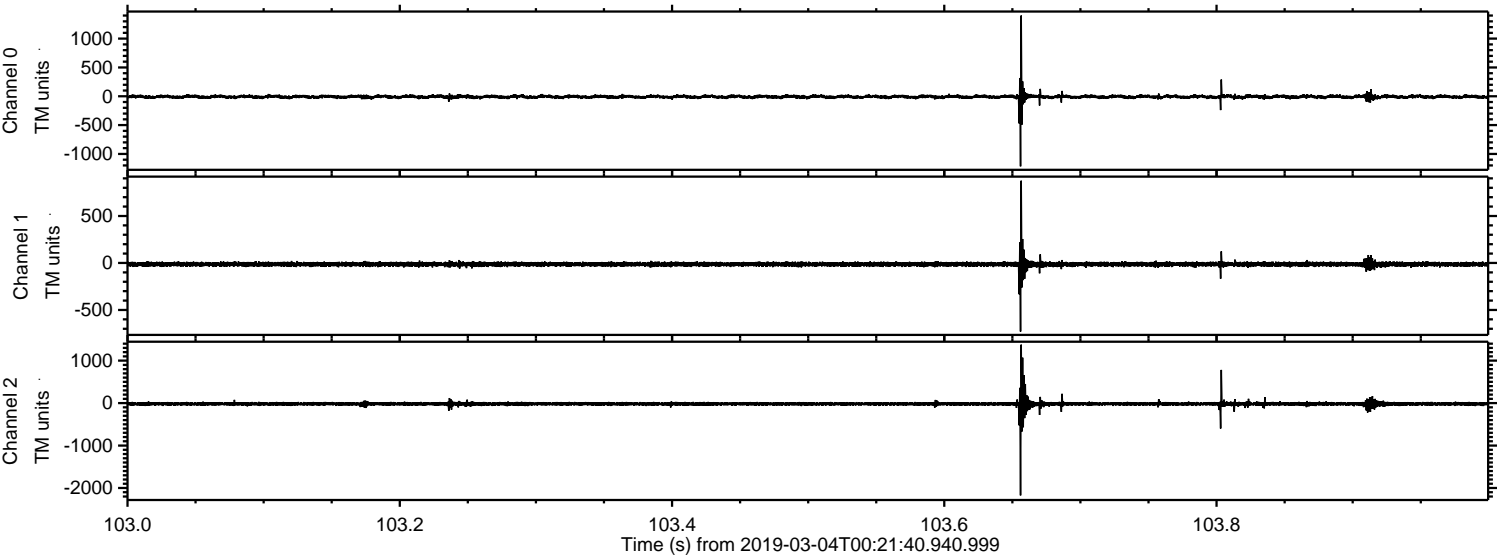
Processed Mon Mar 4 01:29:52 2019 by ELM ver.2012-10-06 from 001\_\_elm20190304\_002139\_\_dat00.bin





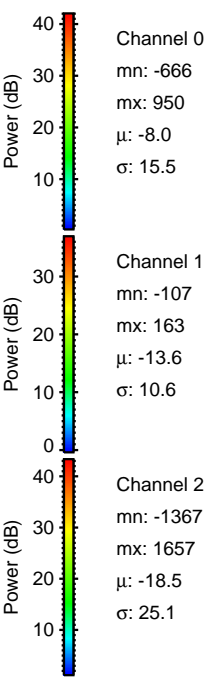
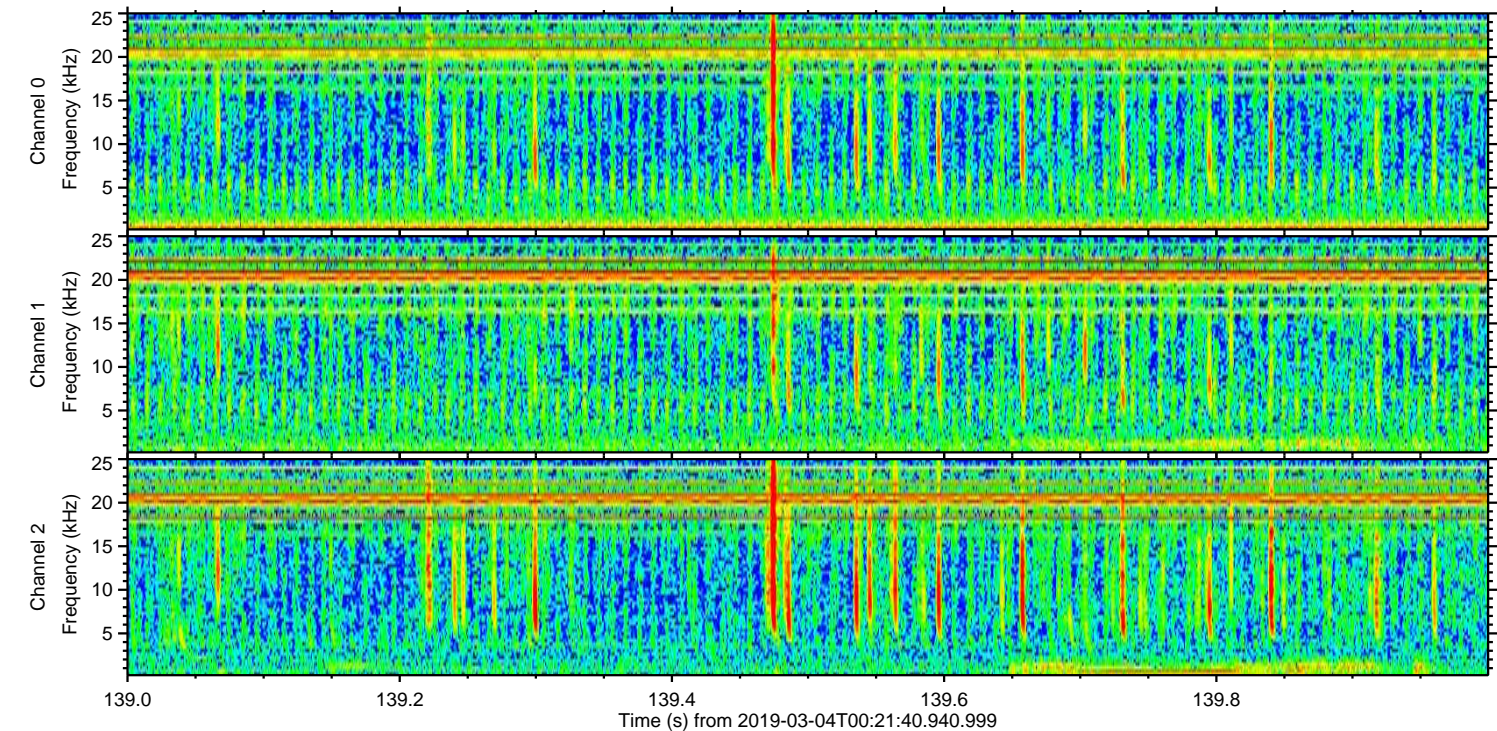
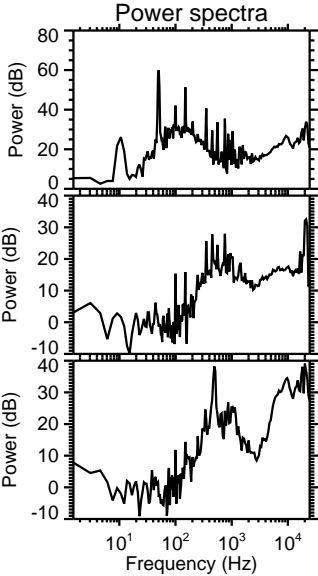
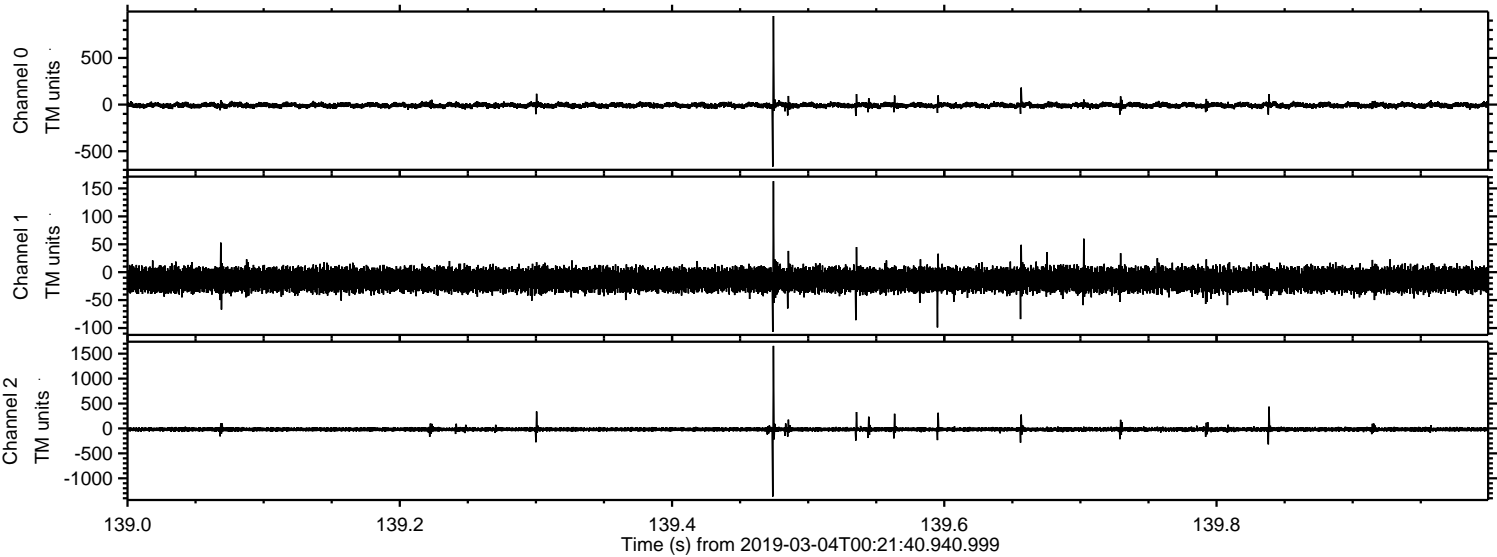
ELMAVAN 3D WAVEFORMS (Measured data sampled at 50 kHz) 51000 packets of 144 samples from 2019-03-04T00:21:40.940.999. Part 104/147

Processed Mon Mar 4 01:29:58 2019 by ELM ver.2012-10-06 from 001\_\_elm20190304\_002139\_\_dat00.bin





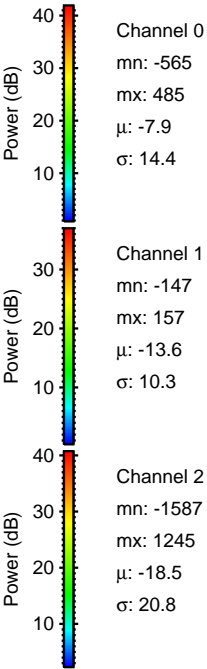
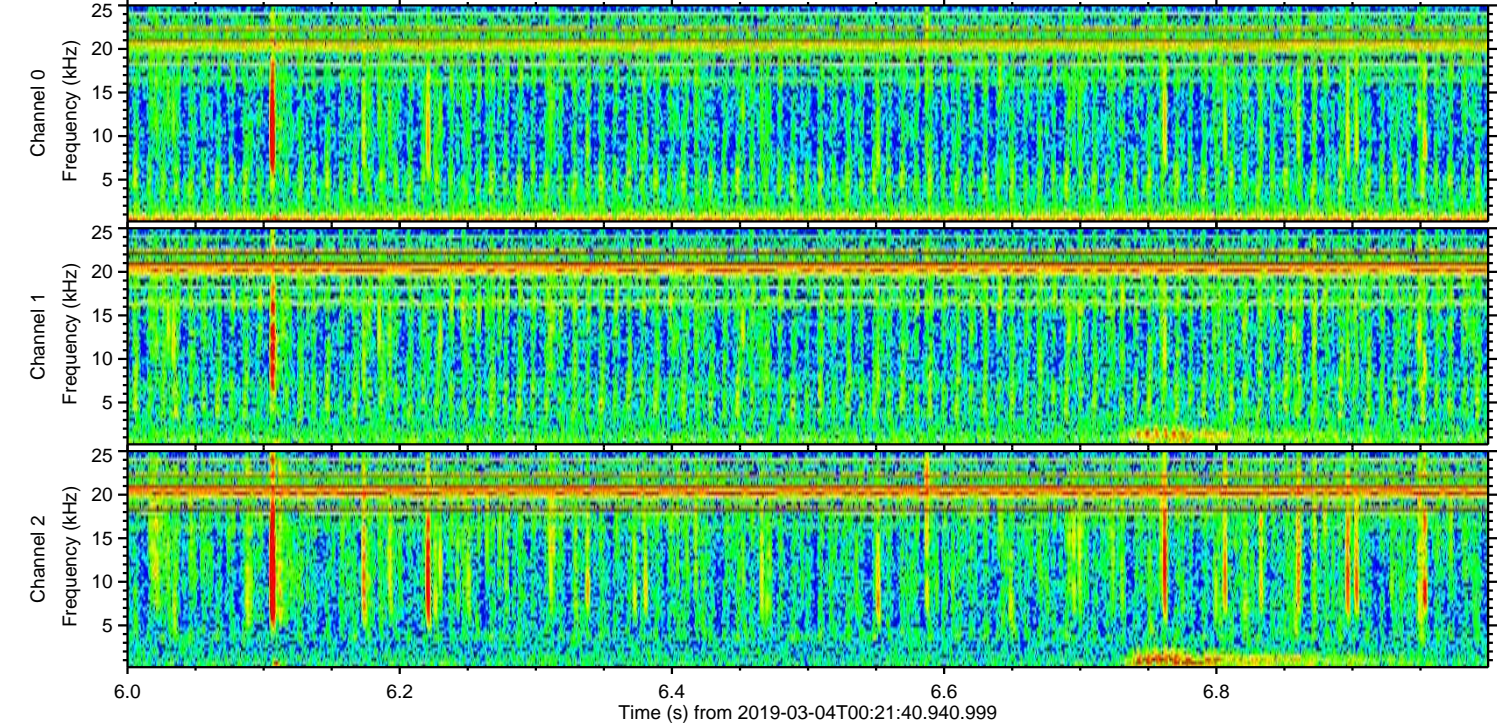
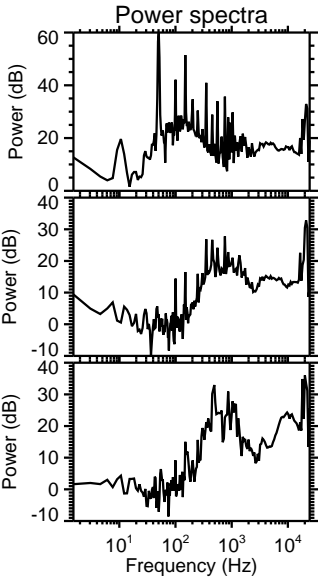
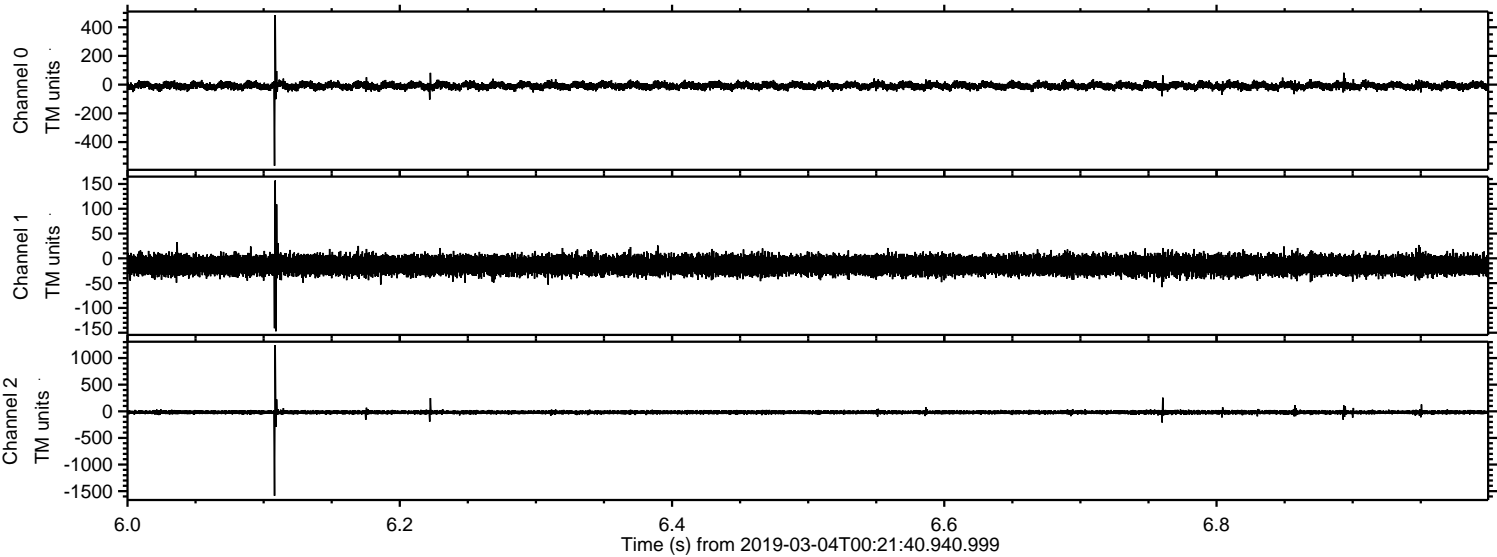
Processed Mon Mar 4 01:29:59 2019 by ELM ver.2012-10-06 from 001\_\_elm20190304\_002139\_\_dat00.bin





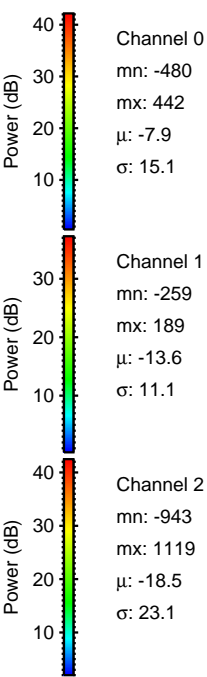
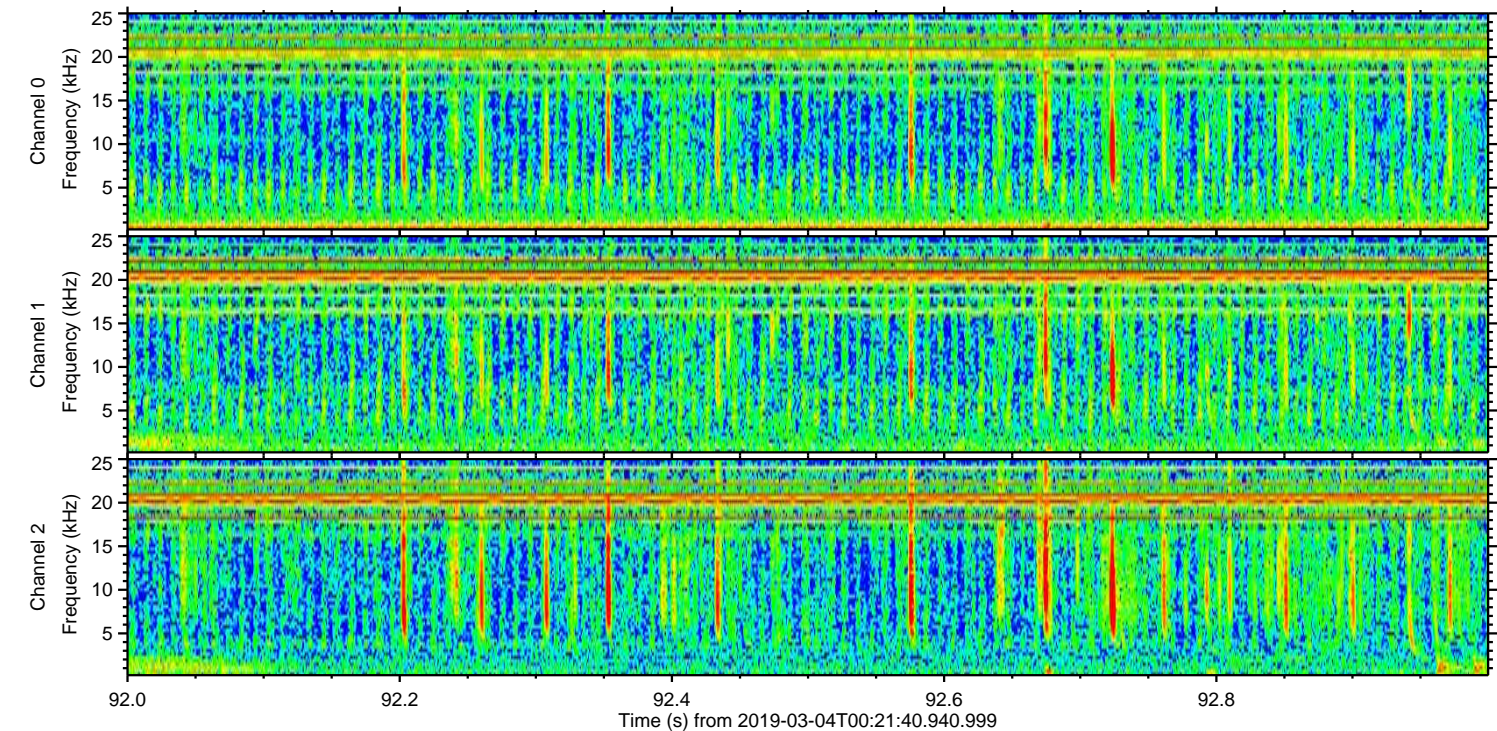
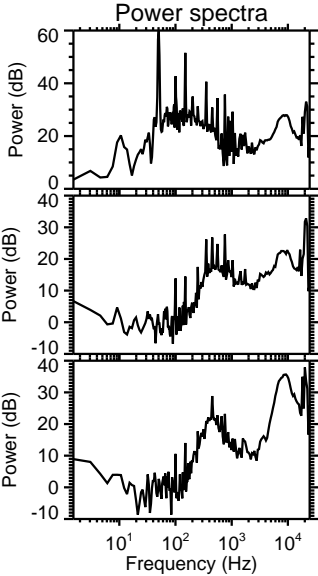
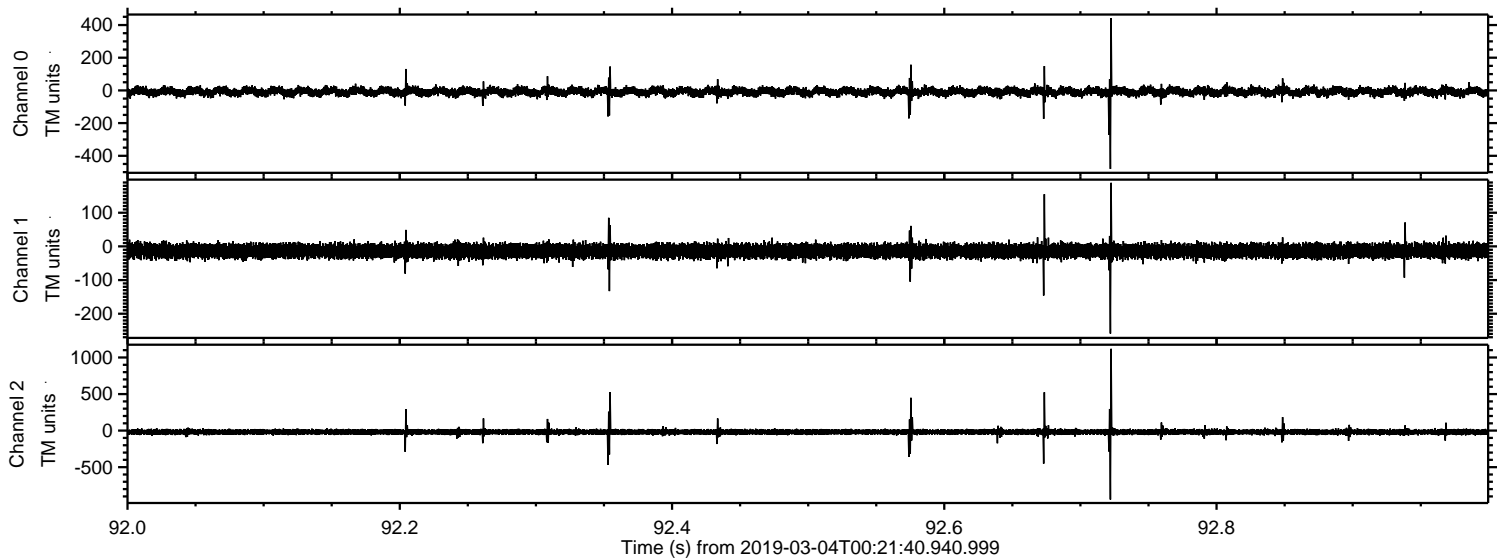
ELMAVAN 3D WAVEFORMS (Measured data sampled at 50 kHz) 51000 packets of 144 samples from 2019-03-04T00:21:40.940.999. Part 7/147

Processed Mon Mar 4 01:29:59 2019 by ELM ver.2012-10-06 from 001\_\_elm20190304\_002139\_\_dat00.bin



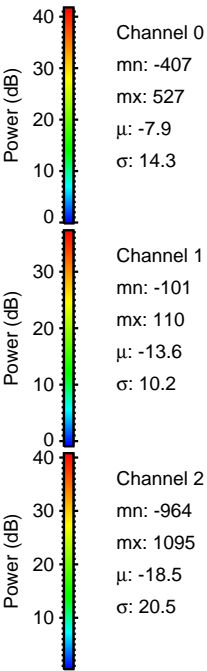
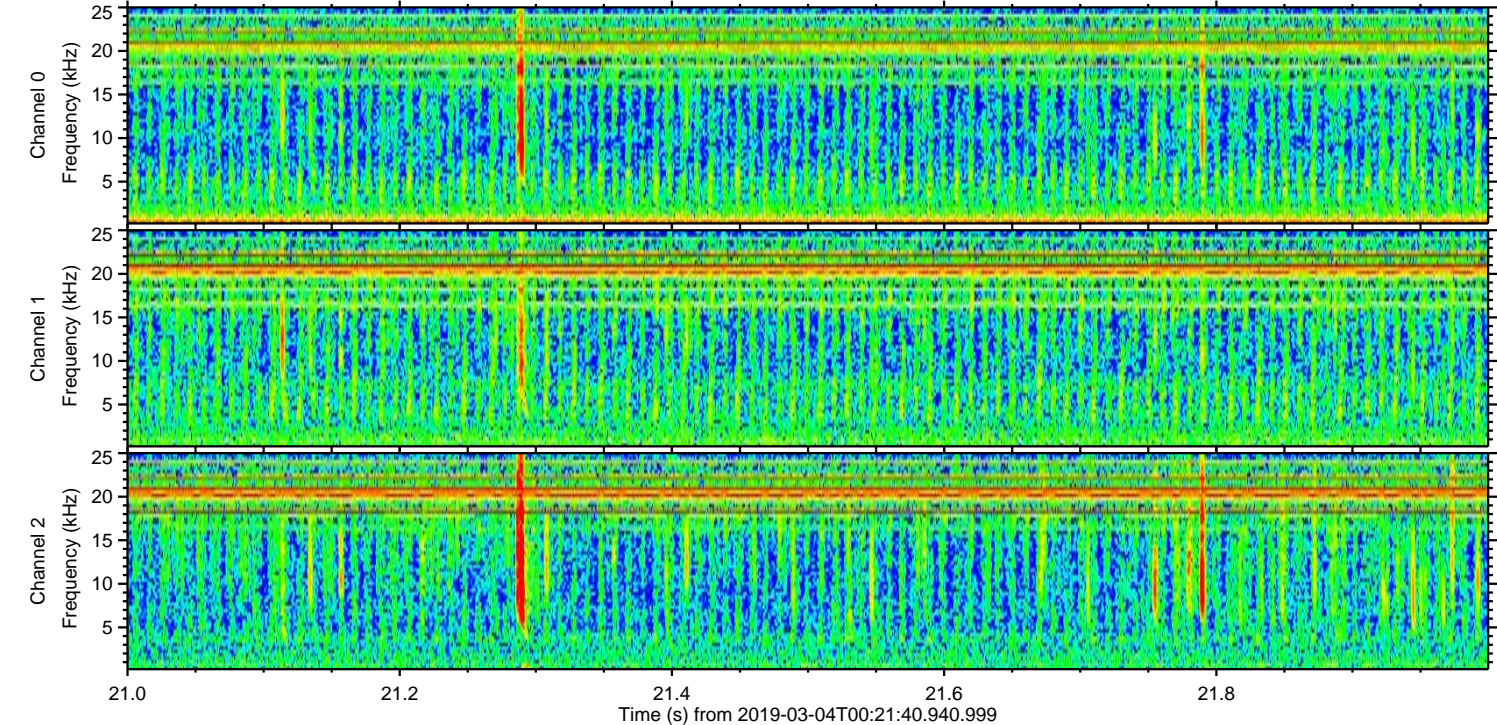
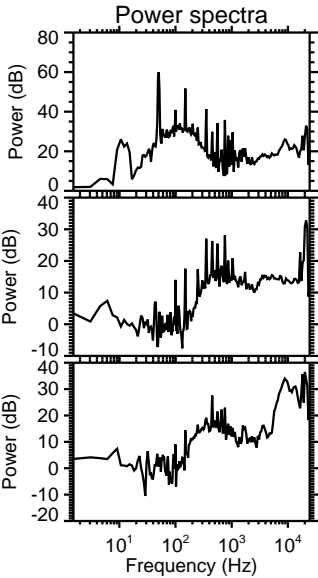
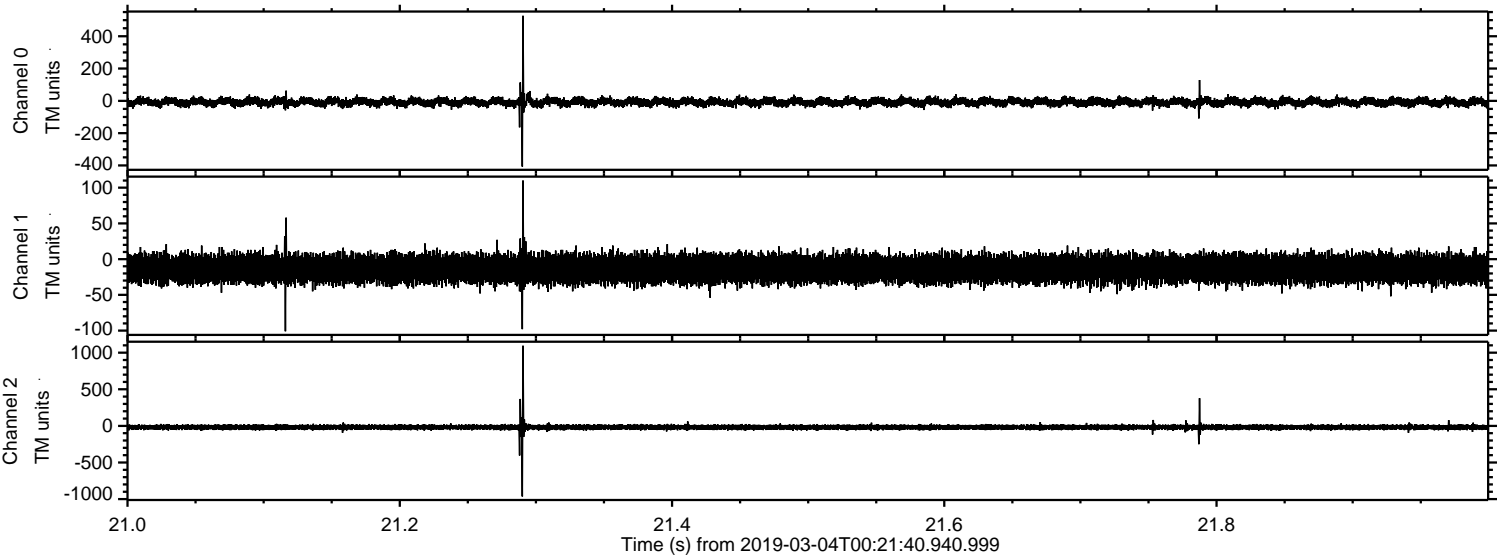


Processed Mon Mar 4 01:30:00 2019 by ELM ver.2012-10-06 from 001\_\_elm20190304\_002139\_\_dat00.bin



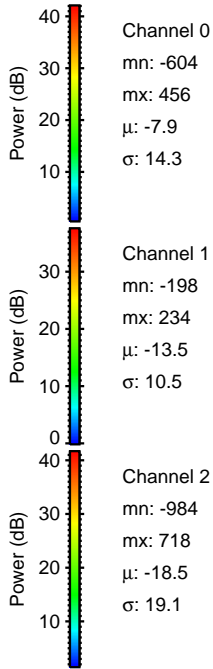
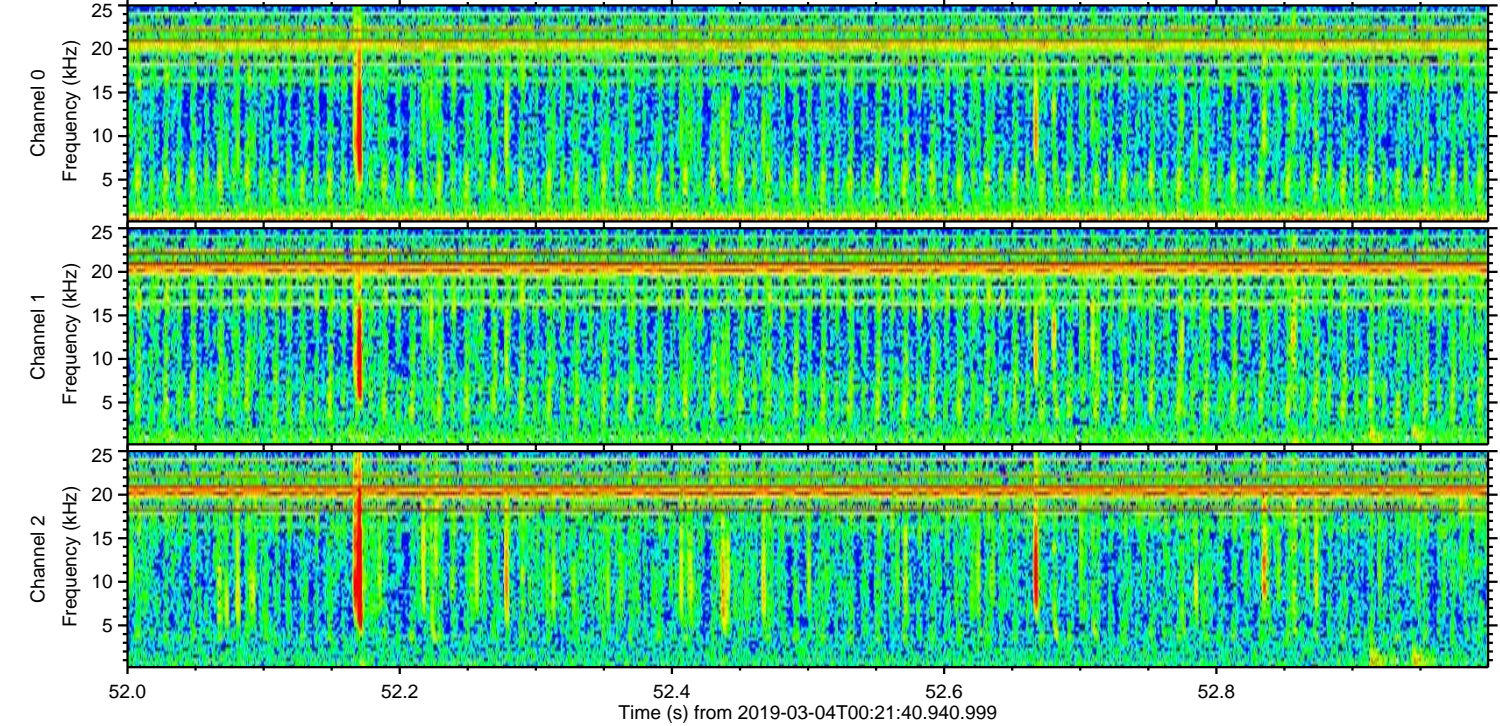
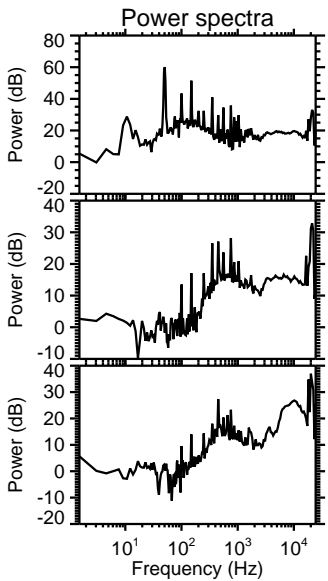
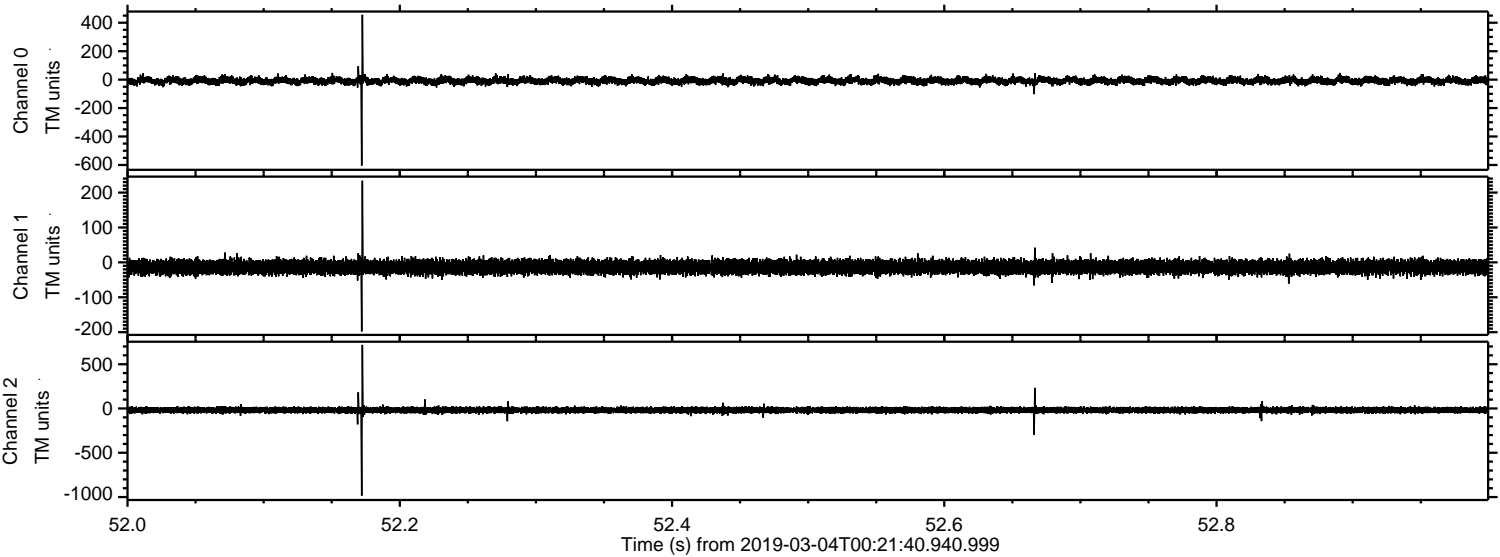


Processed Mon Mar 4 01:30:01 2019 by ELM ver.2012-10-06 from 001\_\_elm20190304\_002139\_\_dat00.bin



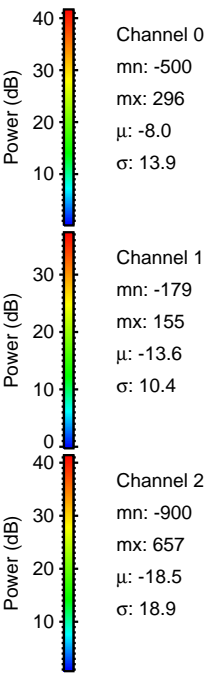
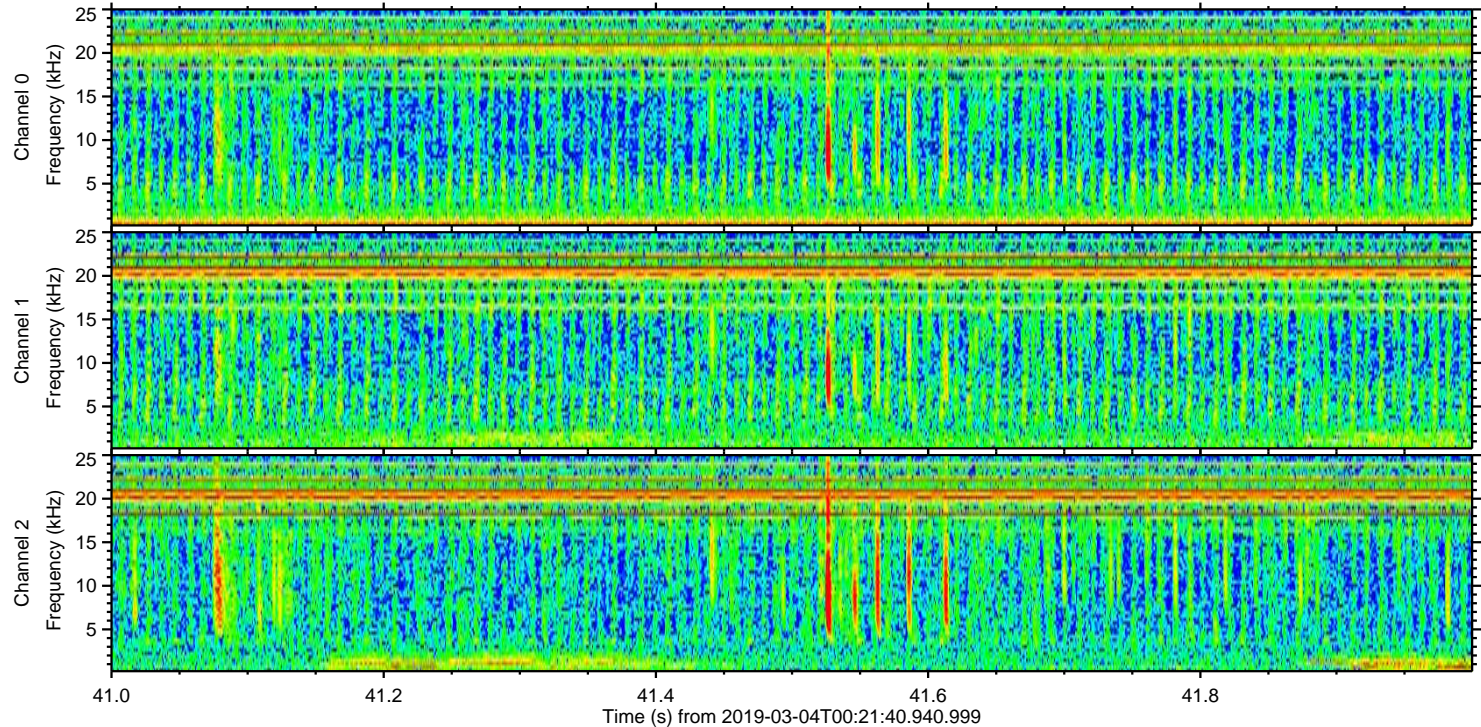
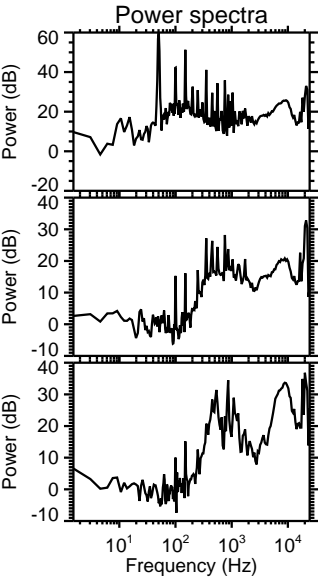
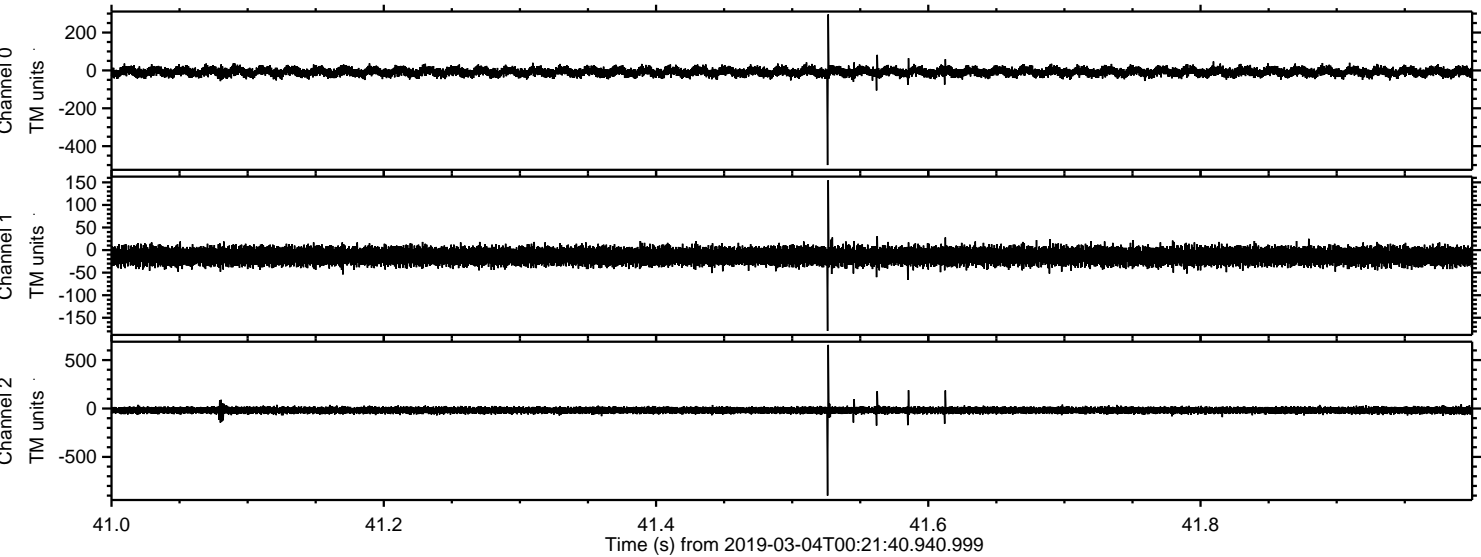


Processed Mon Mar 4 01:30:01 2019 by ELM ver.2012-10-06 from 001\_\_elm20190304\_002139\_\_dat00.bin



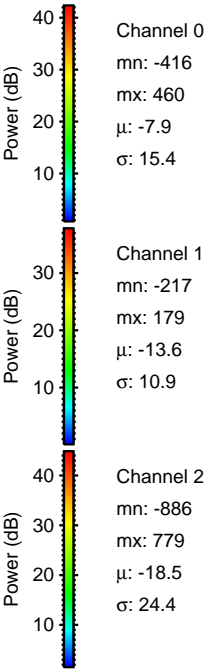
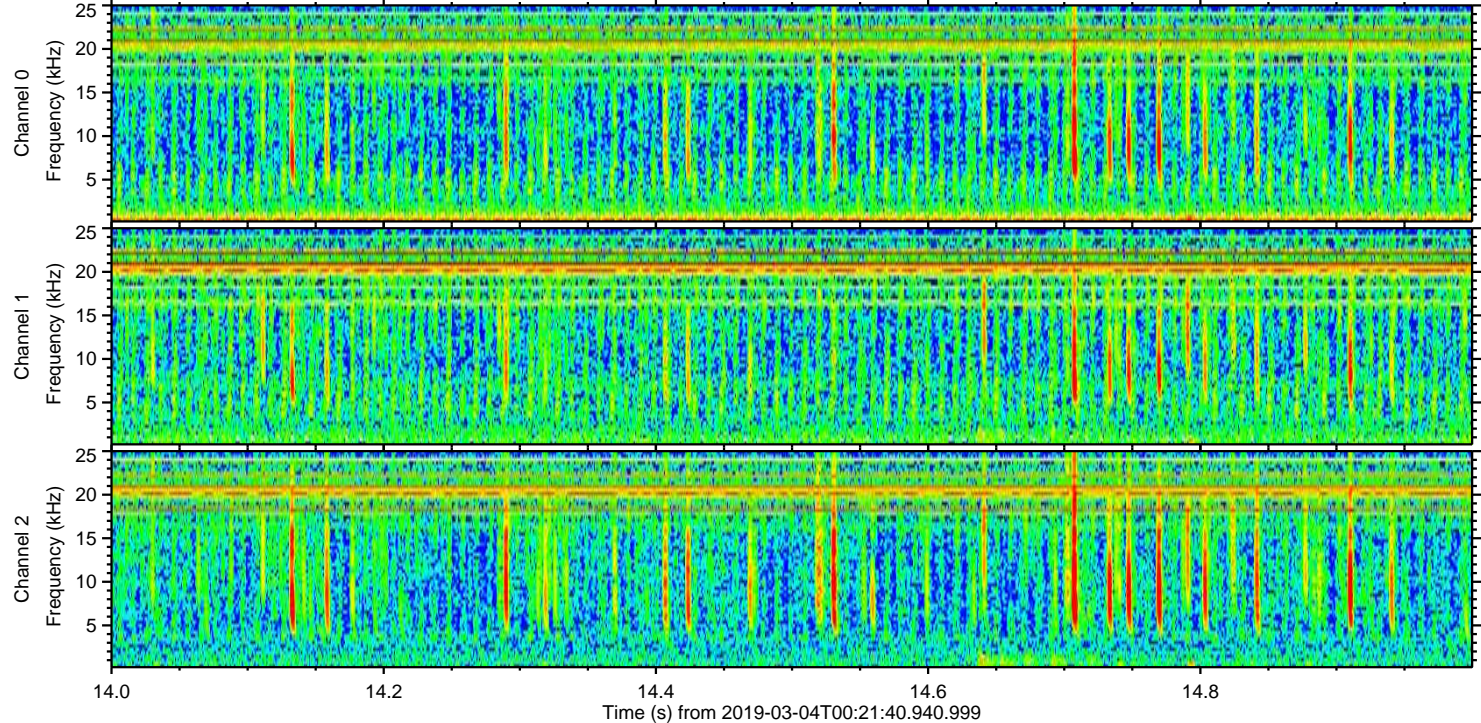
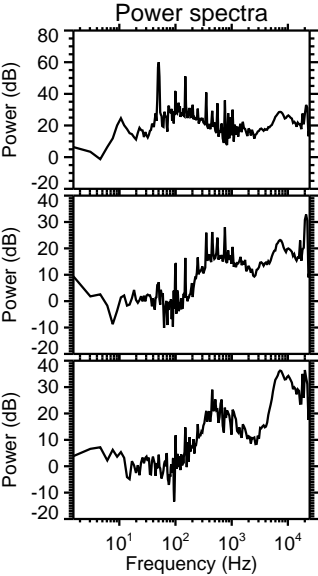
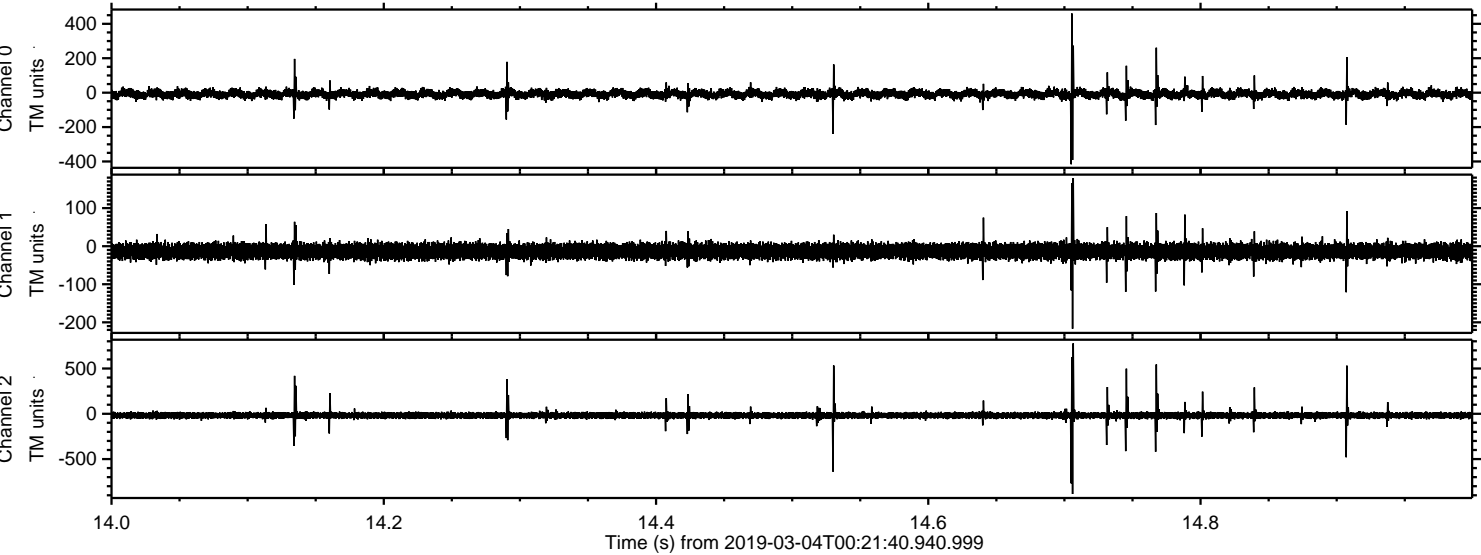


Processed Mon Mar 4 01:30:02 2019 by ELM ver.2012-10-06 from 001\_\_elm20190304\_002139\_\_dat00.bin





Processed Mon Mar 4 01:30:02 2019 by ELM ver.2012-10-06 from 001\_\_elm20190304\_002139\_\_dat00.bin





Processed Mon Mar 4 01:30:03 2019 by ELM ver.2012-10-06 from 001\_\_elm20190304\_002139\_\_dat00.bin

