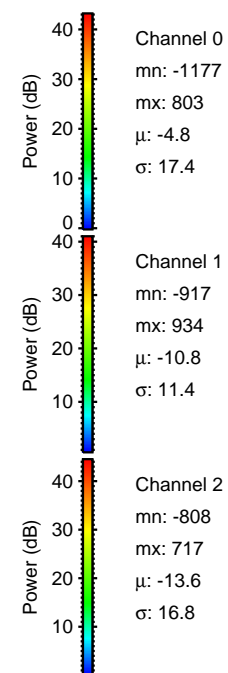
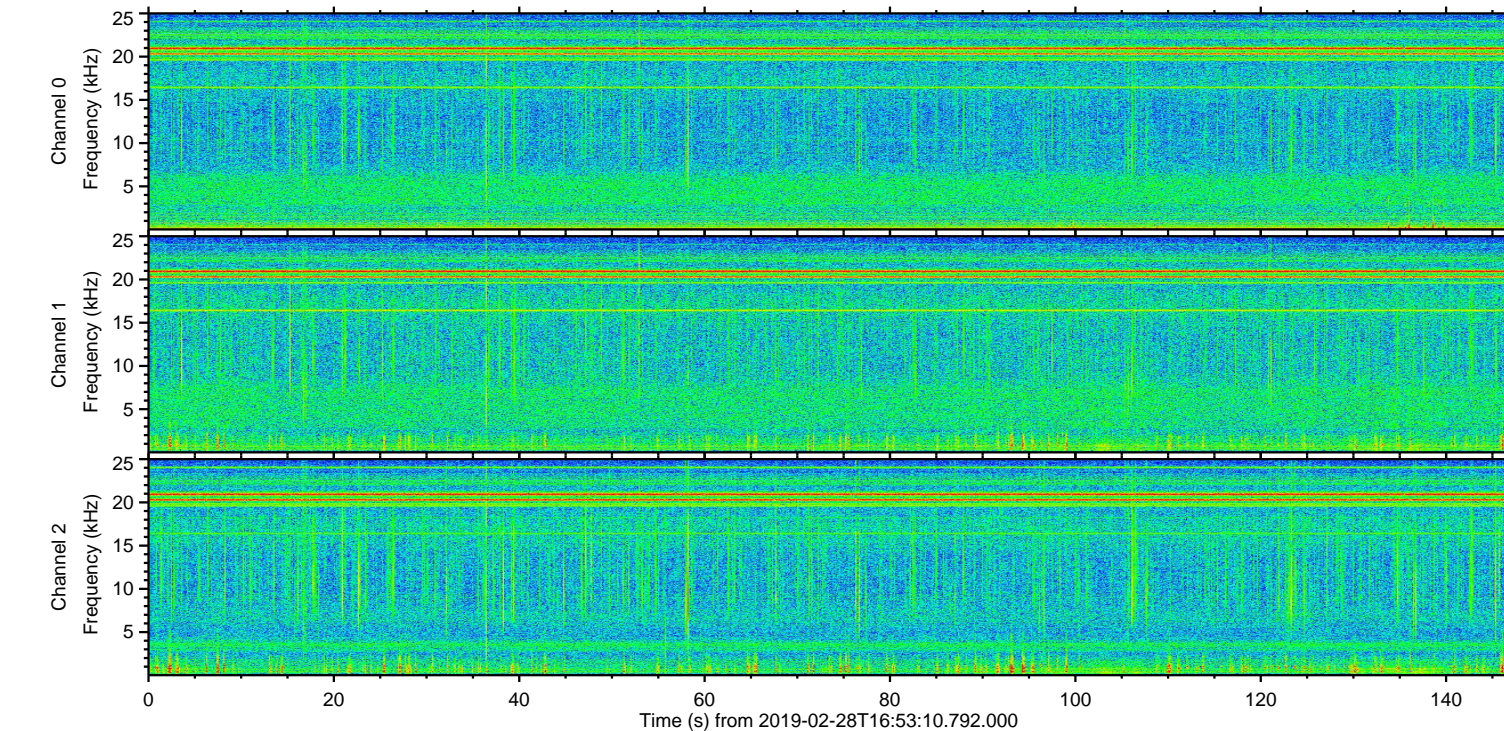
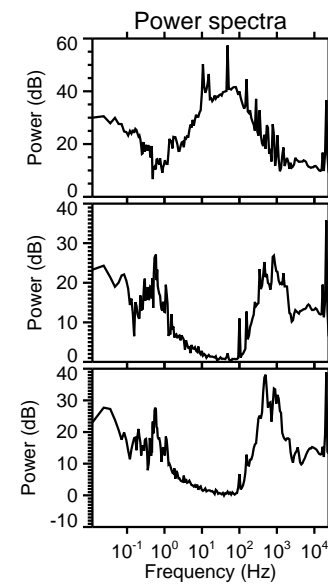
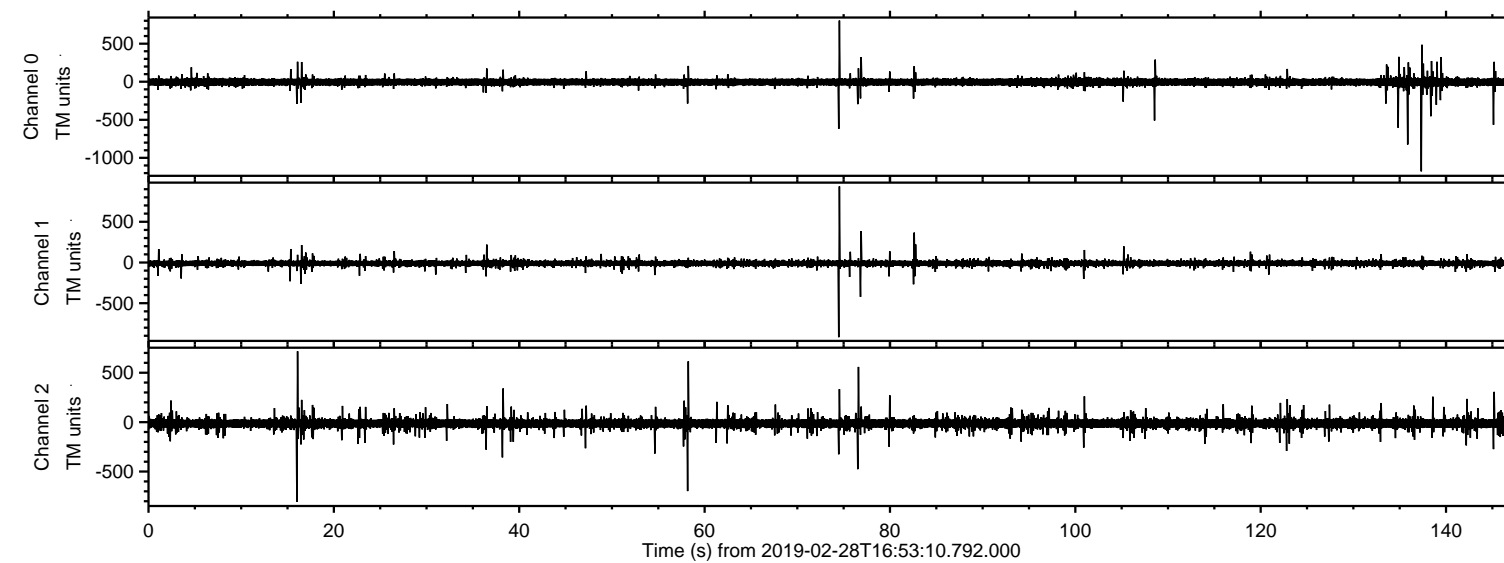


# ELMAVAN 3D WAVEFORMS (Measured data sampled at 50 kHz) 51000 packets of 144 samples from 2019-02-28T16:53:10.792.000.

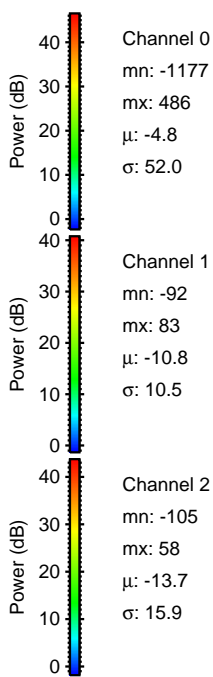
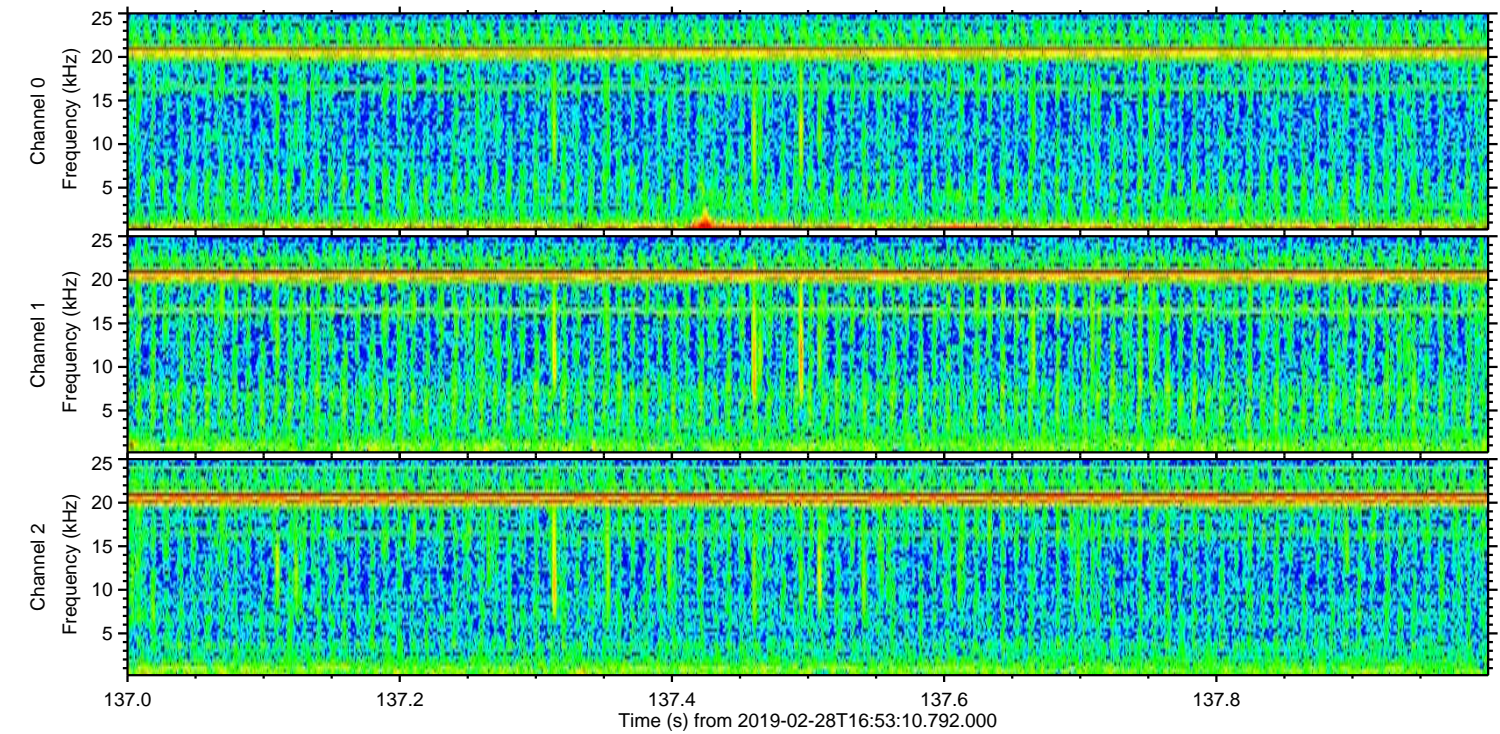
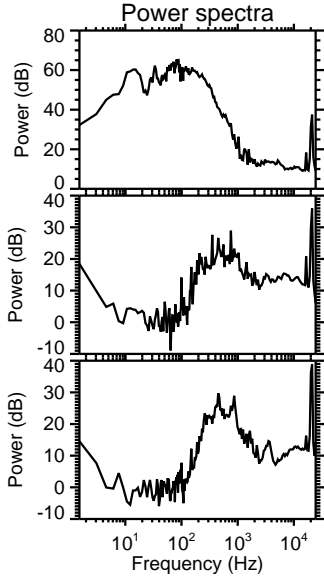
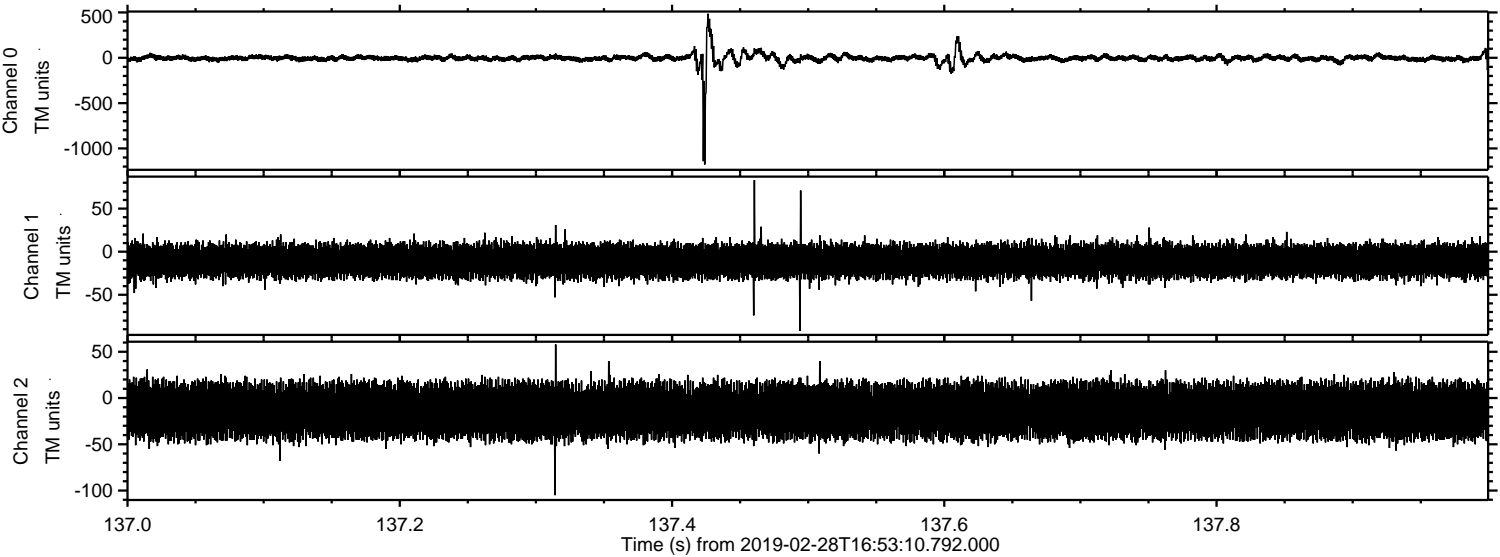
Processed Thu Feb 28 18:01:30 2019 by ELM ver.2012-10-06 from 001\_\_elm20190228\_165309\_\_dat00.bin





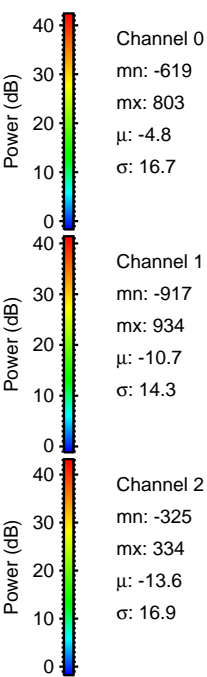
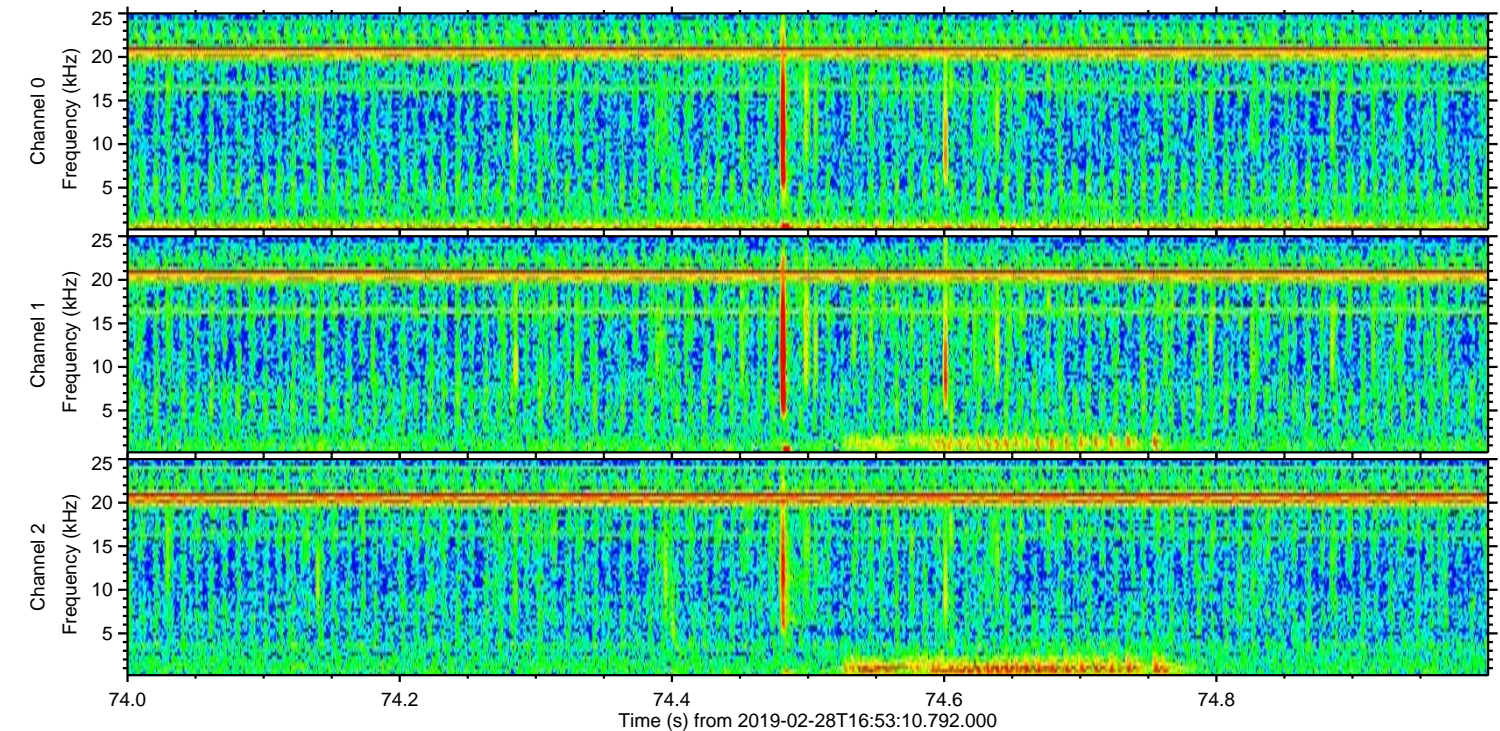
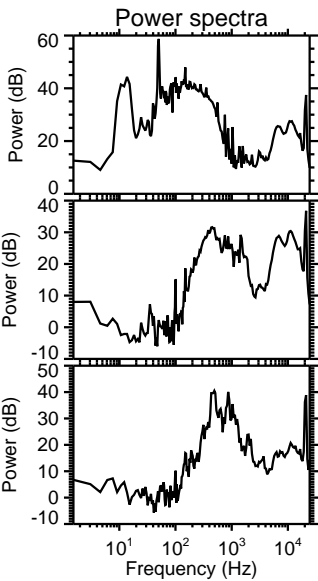
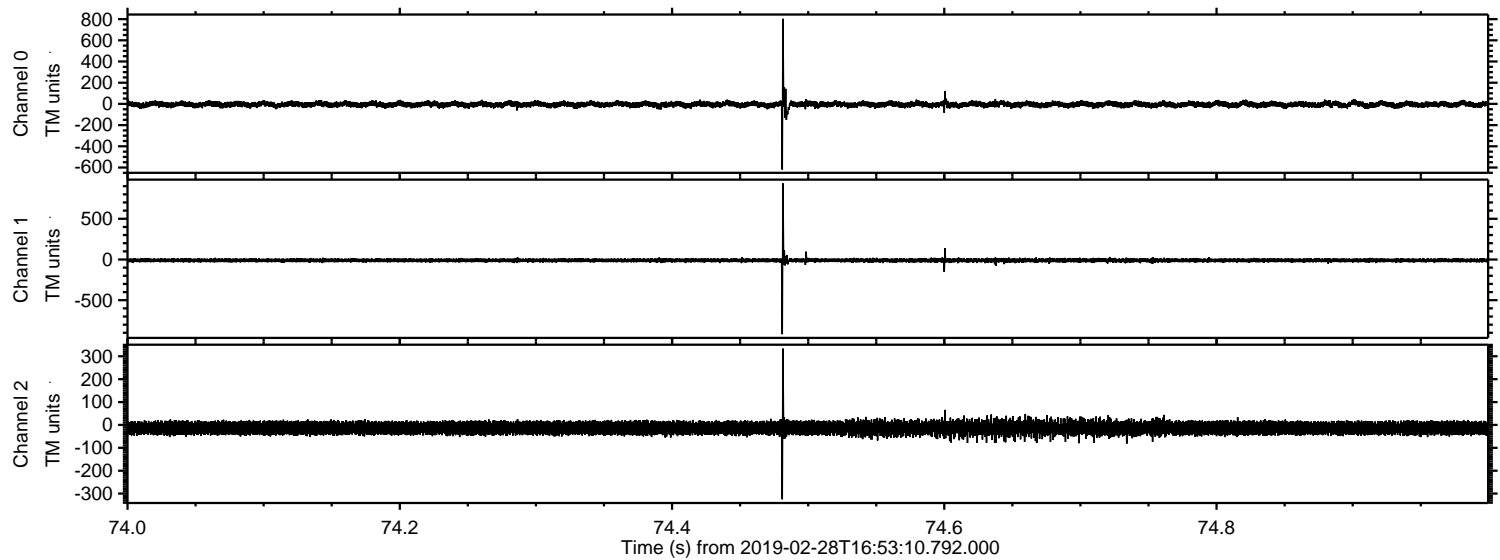
ELMAVAN 3D WAVEFORMS (Measured data sampled at 50 kHz) 51000 packets of 144 samples from 2019-02-28T16:53:10.792.000. Part 138/147

Processed Thu Feb 28 18:01:40 2019 by ELM ver.2012-10-06 from 001\_\_elm20190228\_165309\_\_dat00.bin



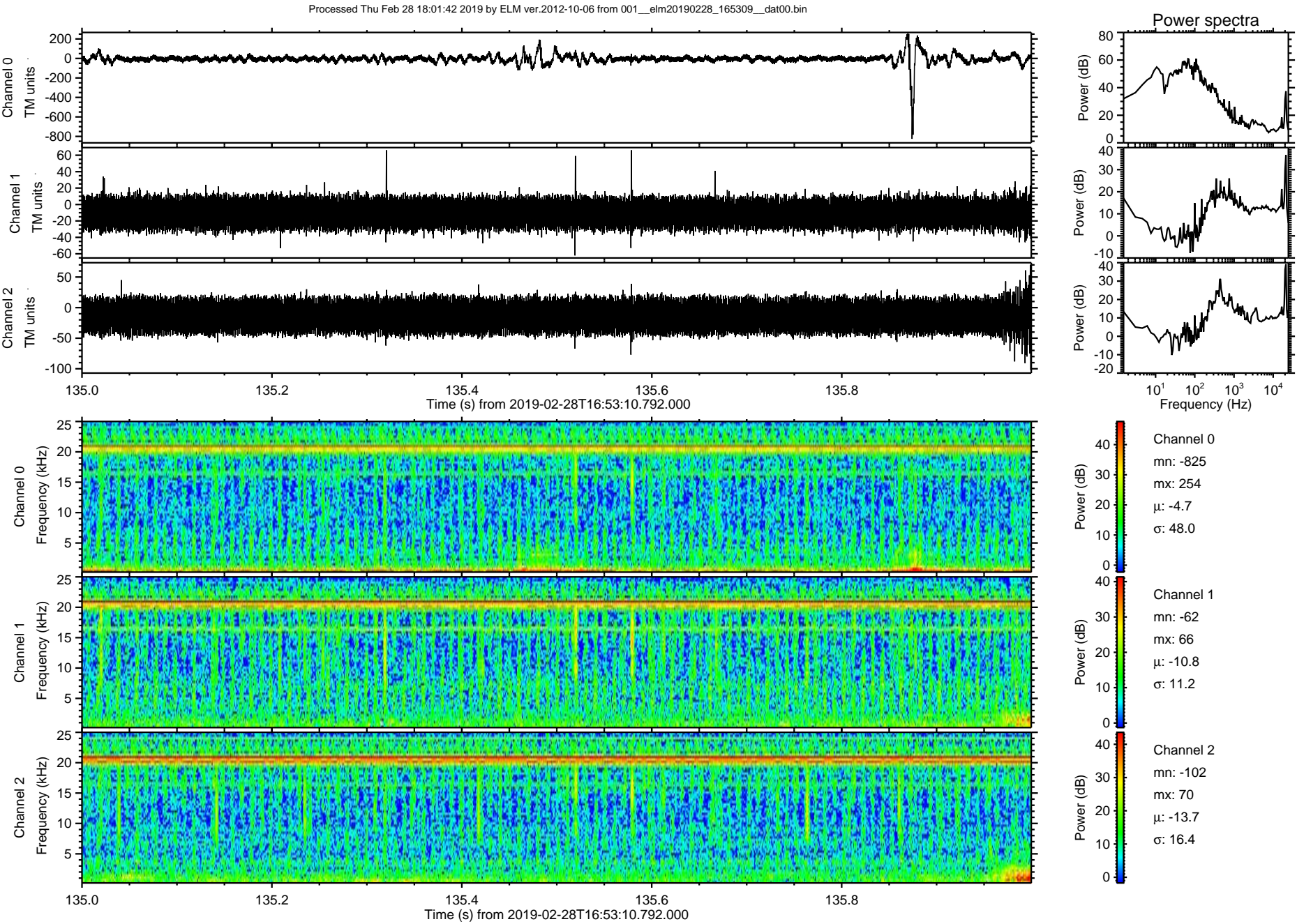


Processed Thu Feb 28 18:01:41 2019 by ELM ver.2012-10-06 from 001\_\_elm20190228\_165309\_\_dat00.bin



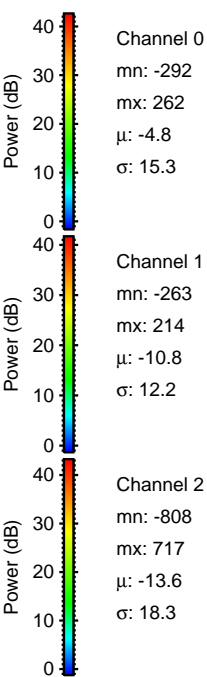
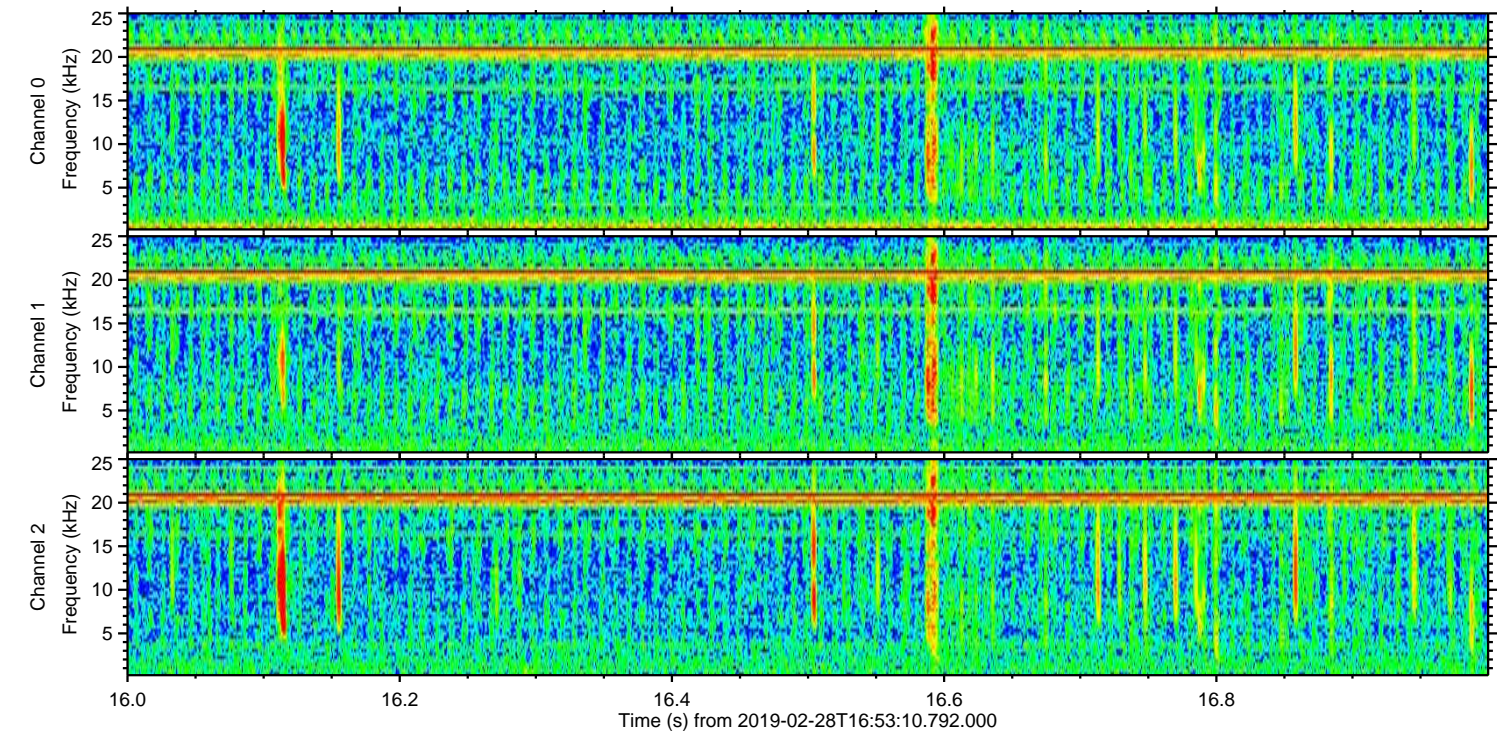
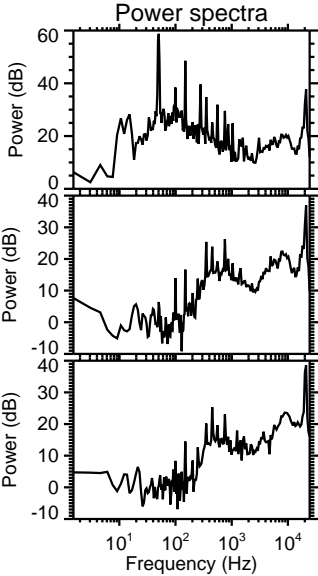
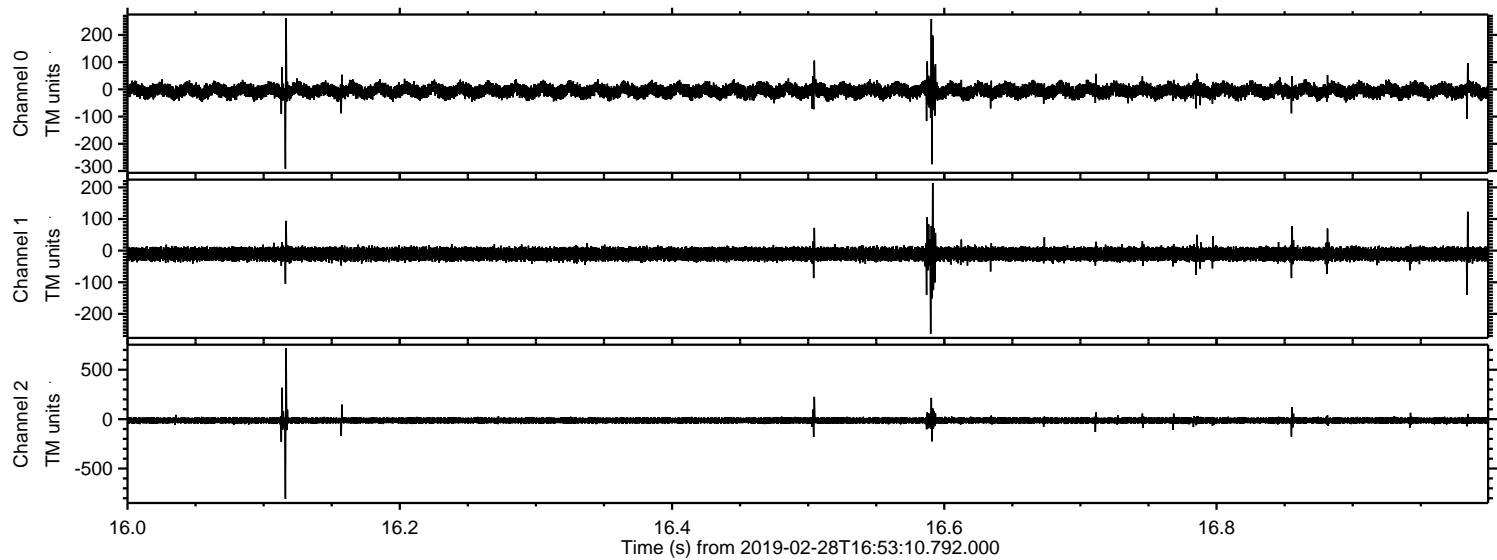


ELMAVAN 3D WAVEFORMS (Measured data sampled at 50 kHz) 51000 packets of 144 samples from 2019-02-28T16:53:10.792.000. Part 136/147



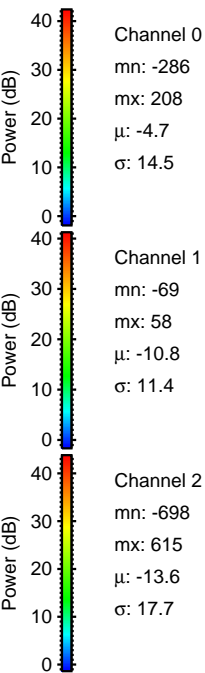
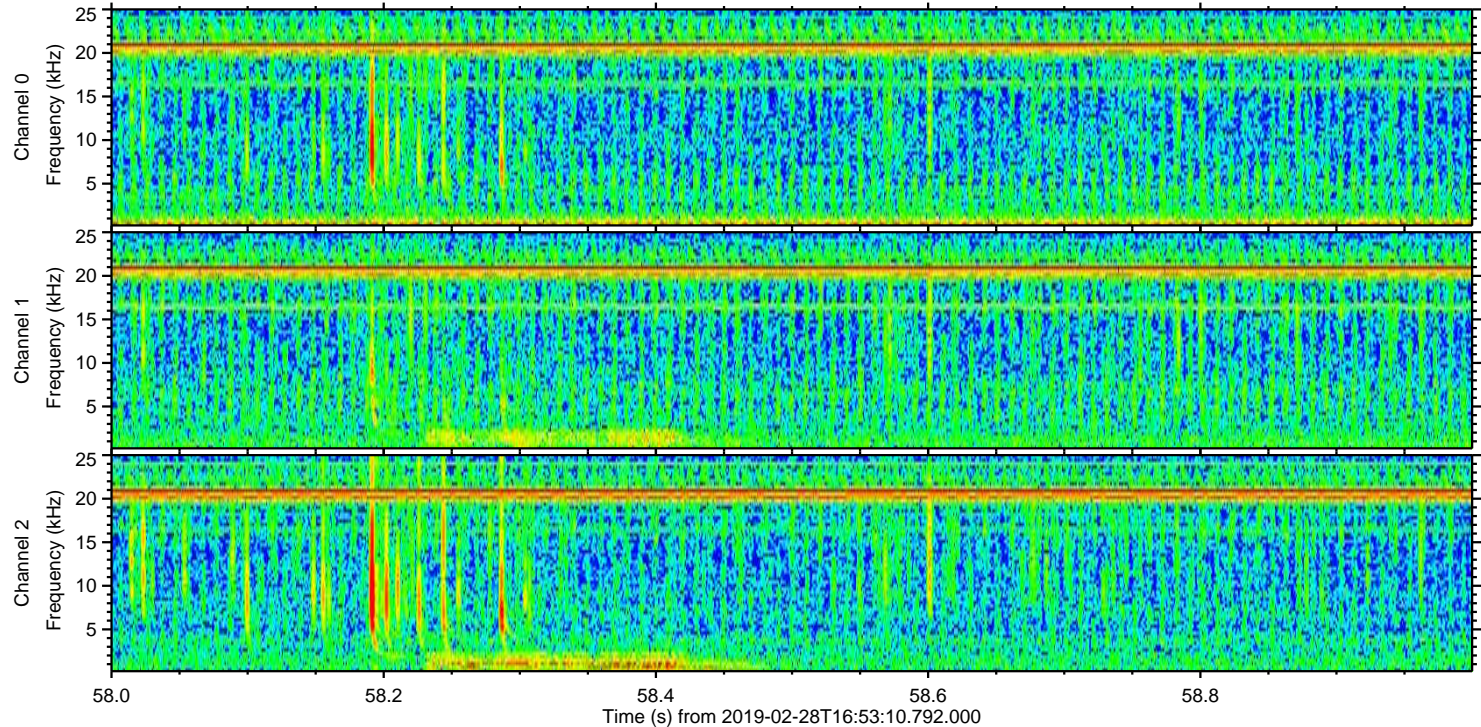
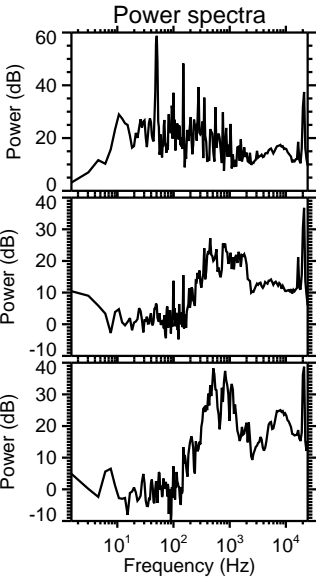
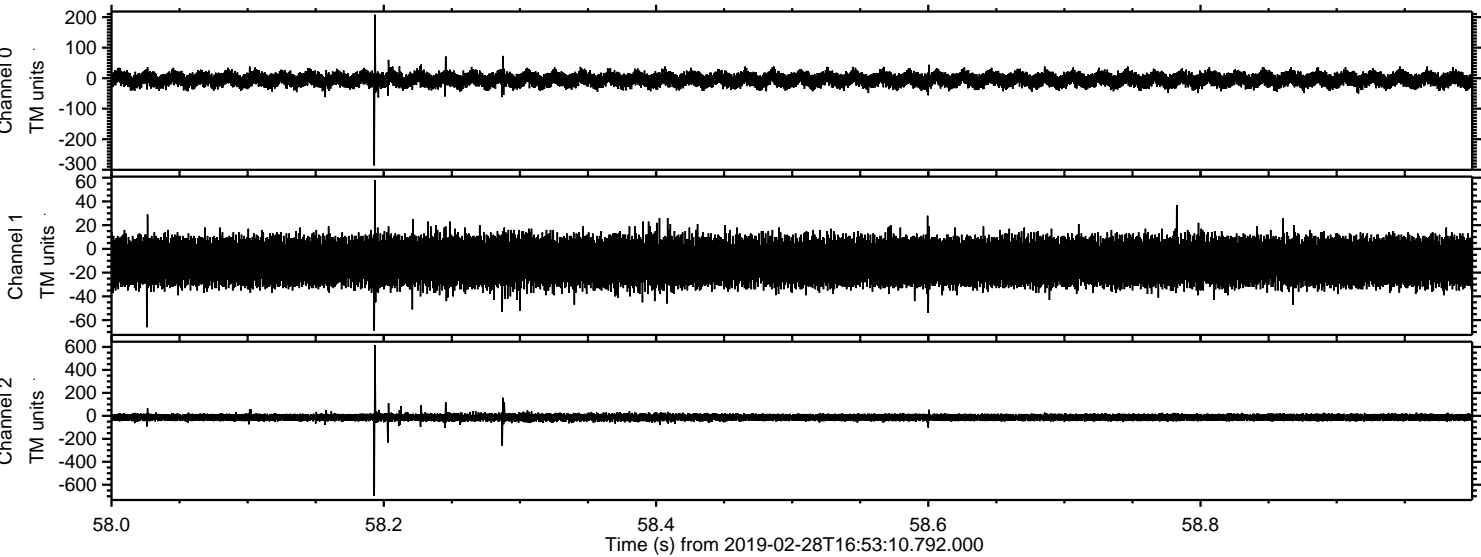


Processed Thu Feb 28 18:01:43 2019 by ELM ver.2012-10-06 from 001\_\_elm20190228\_165309\_\_dat00.bin



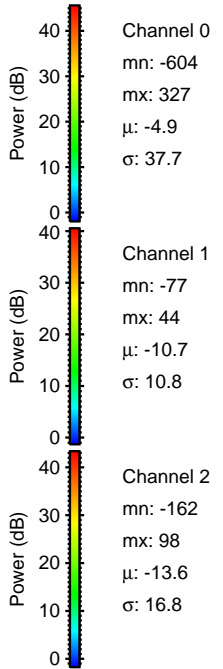
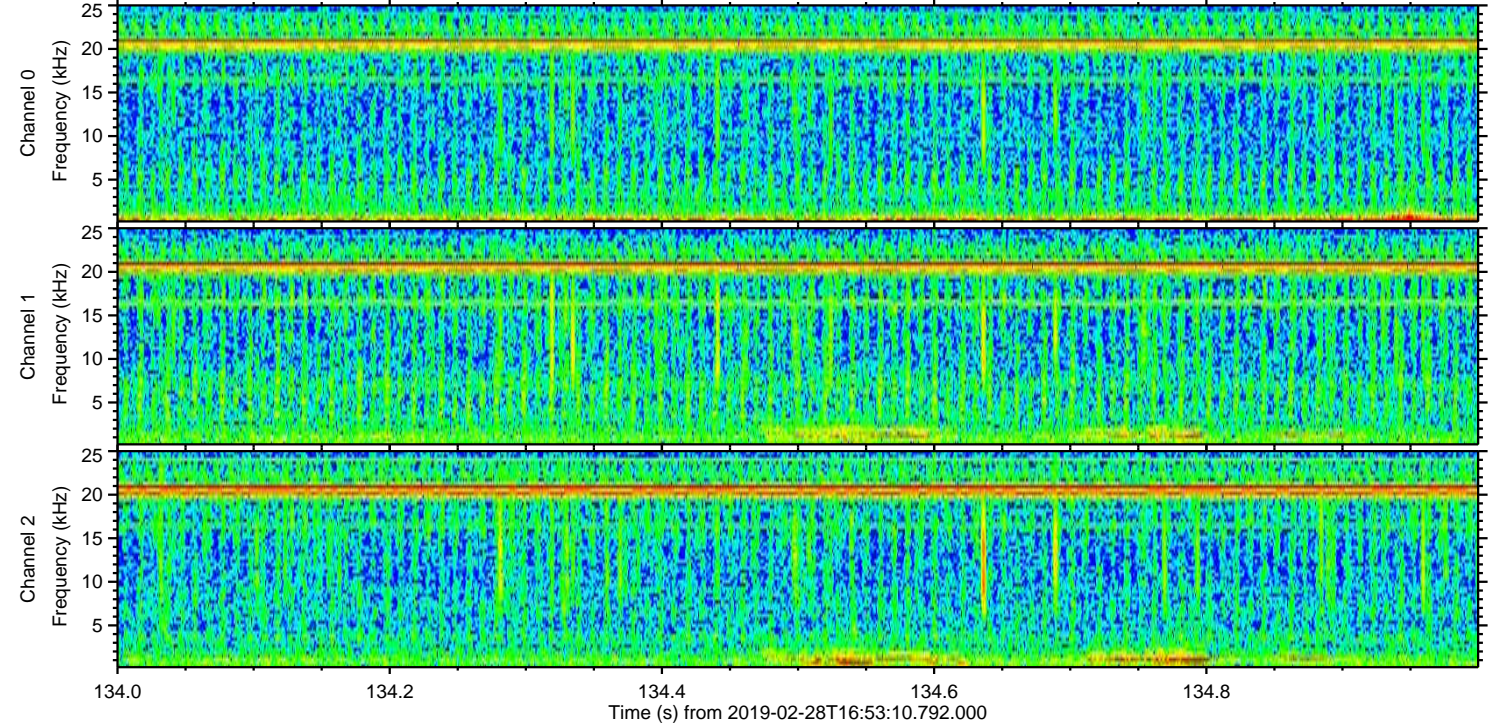
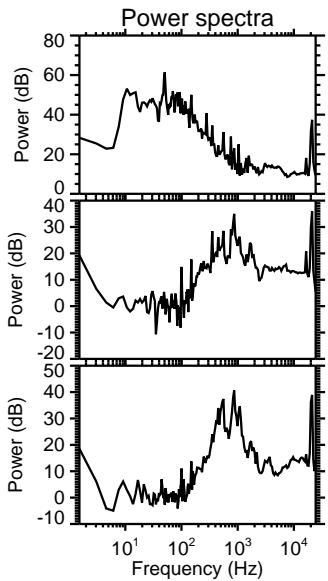
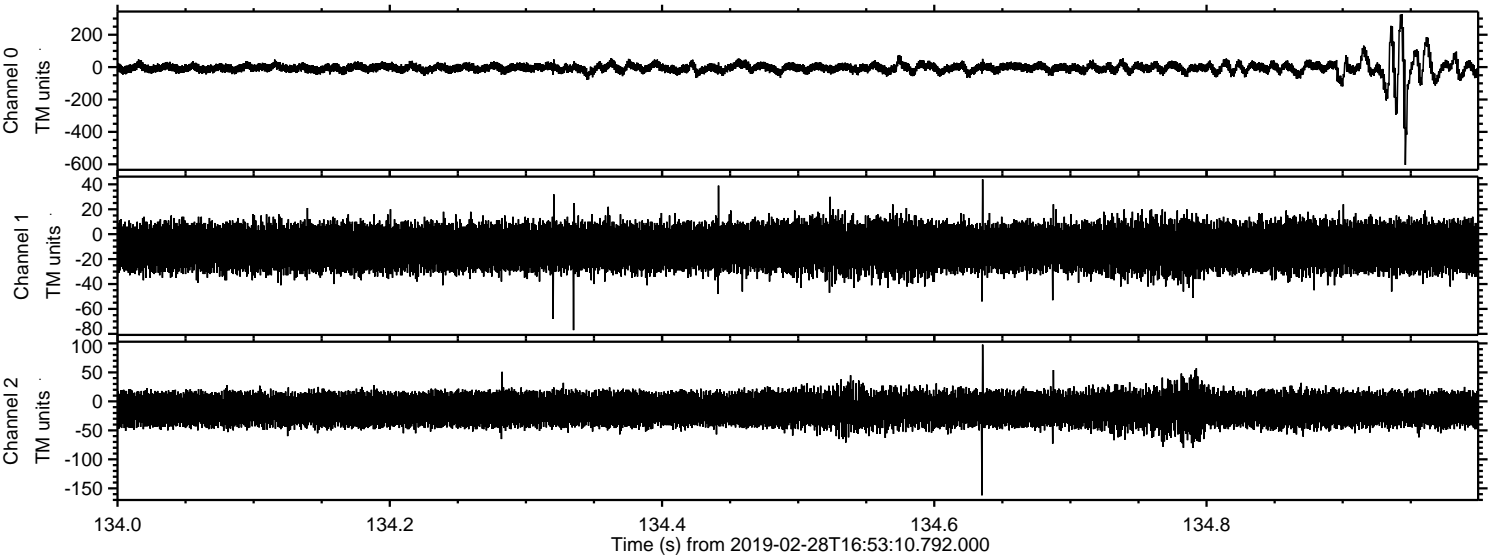


Processed Thu Feb 28 18:01:44 2019 by ELM ver.2012-10-06 from 001\_\_elm20190228\_165309\_\_dat00.bin



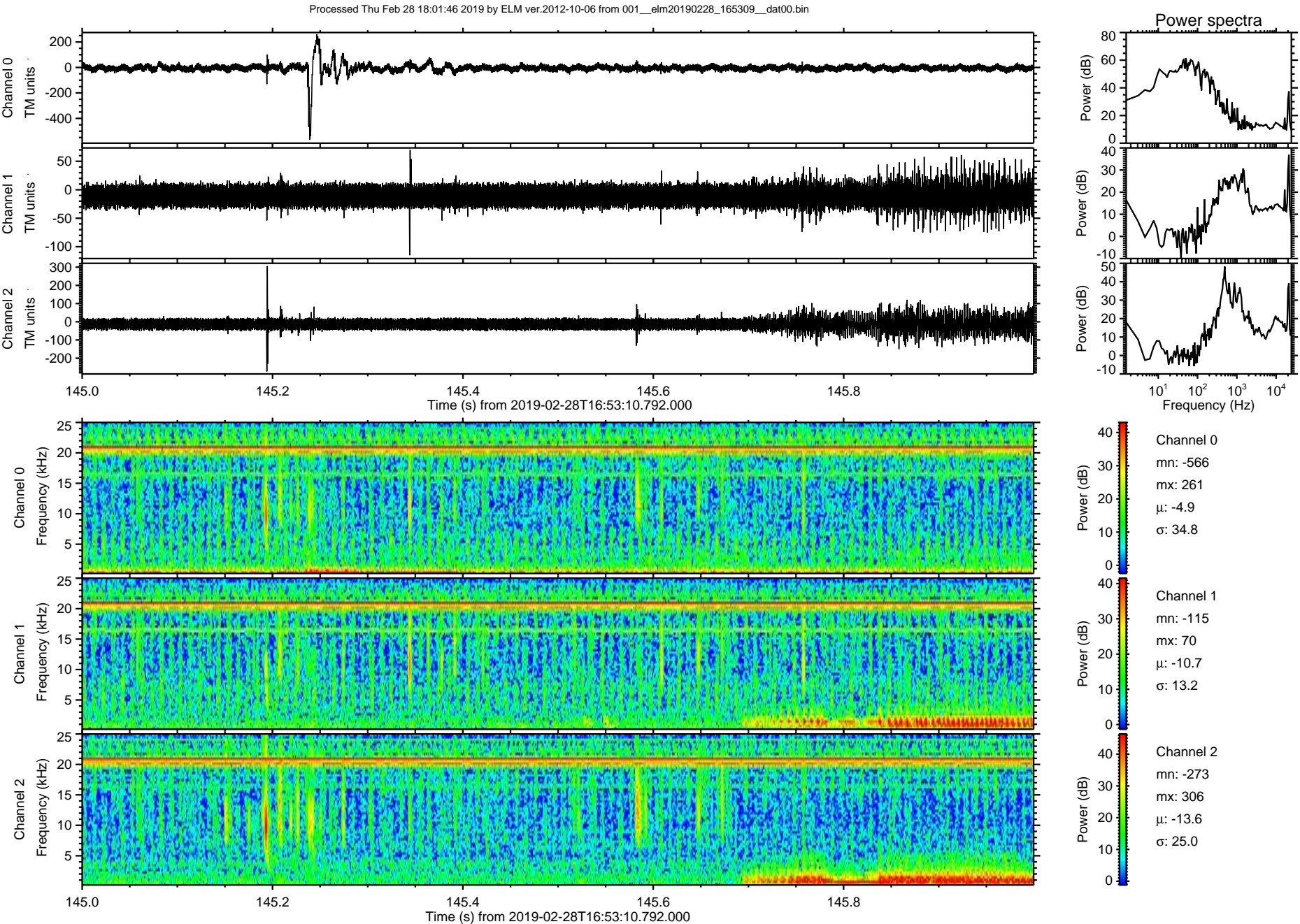


Processed Thu Feb 28 18:01:45 2019 by ELM ver.2012-10-06 from 001\_\_elm20190228\_165309\_\_dat00.bin



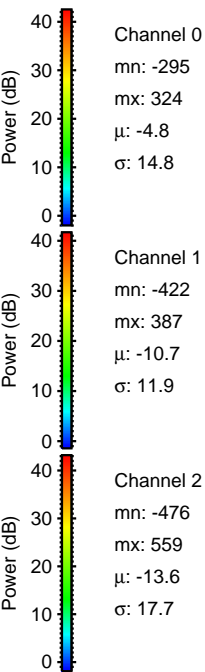
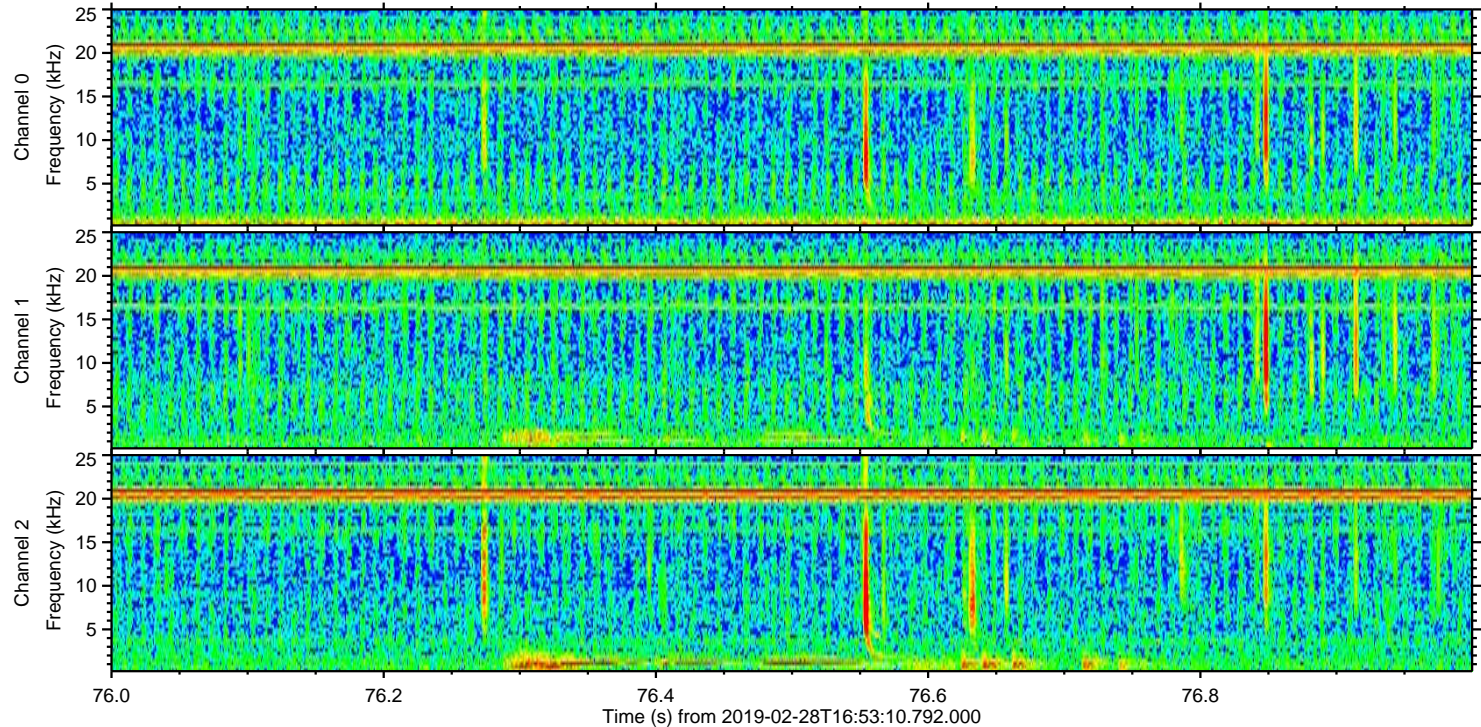
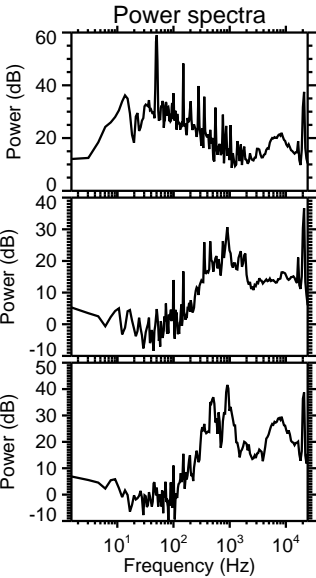
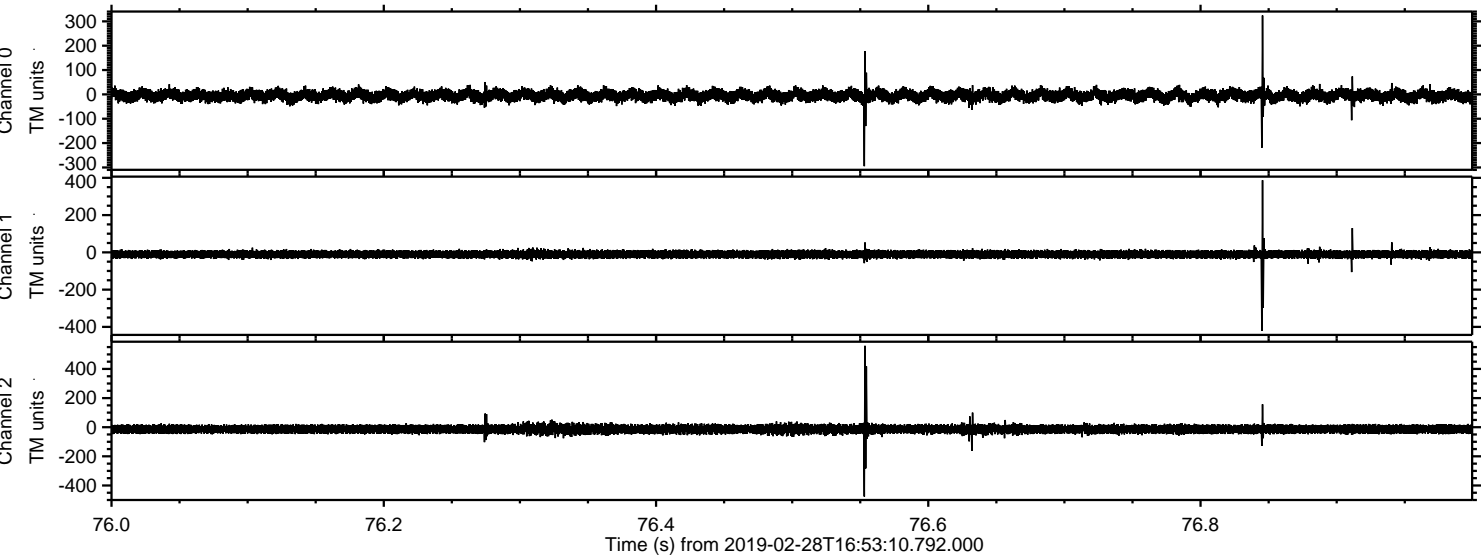


ELMAVAN 3D WAVEFORMS (Measured data sampled at 50 kHz) 51000 packets of 144 samples from 2019-02-28T16:53:10.792.000. Part 146/147



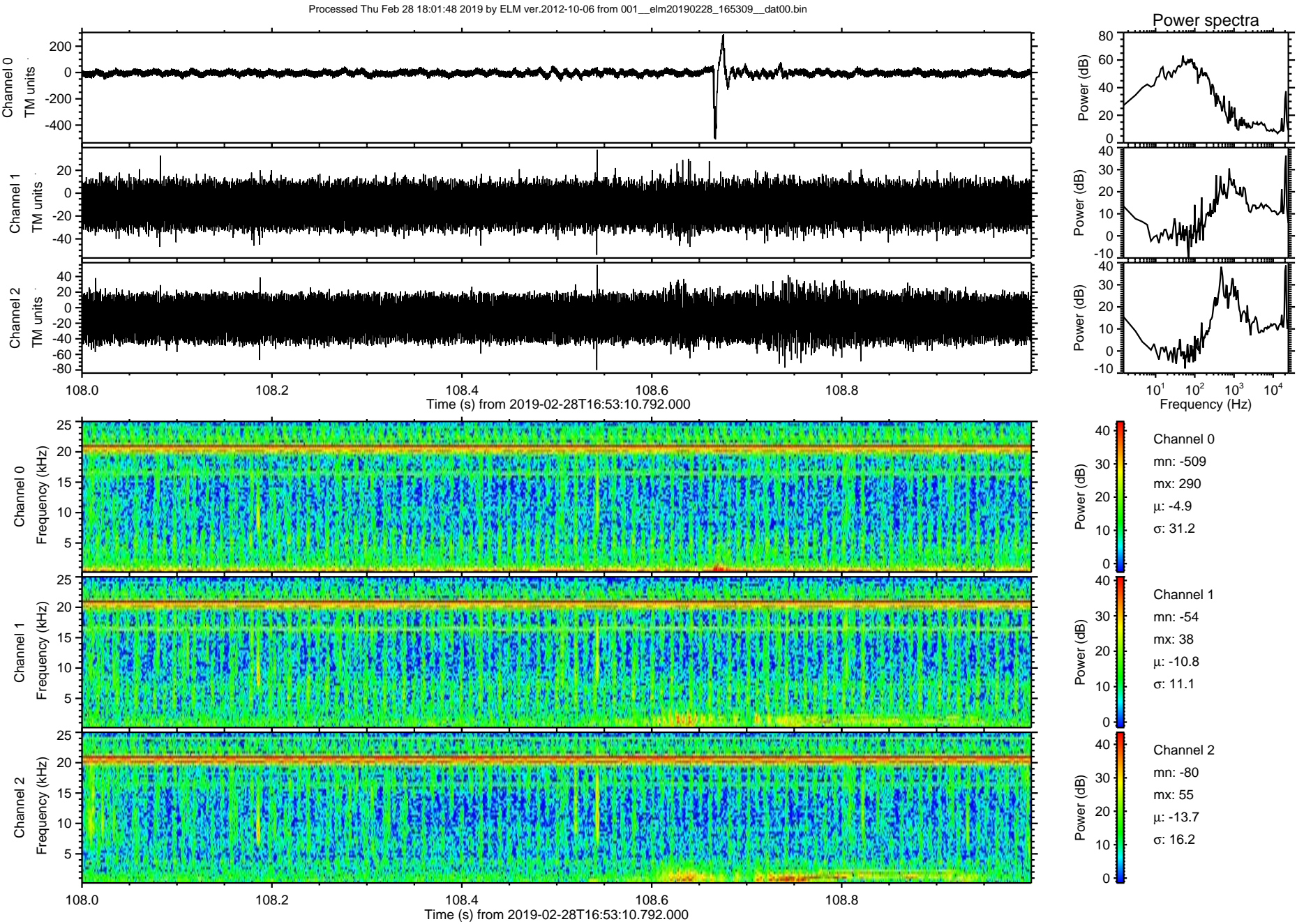


Processed Thu Feb 28 18:01:47 2019 by ELM ver.2012-10-06 from 001\_\_elm20190228\_165309\_\_dat00.bin





ELMAVAN 3D WAVEFORMS (Measured data sampled at 50 kHz) 51000 packets of 144 samples from 2019-02-28T16:53:10.792.000. Part 109/147





ELMAVAN 3D WAVEFORMS (Measured data sampled at 50 kHz) 51000 packets of 144 samples from 2019-02-28T16:53:10.792.000. Part 145/147

