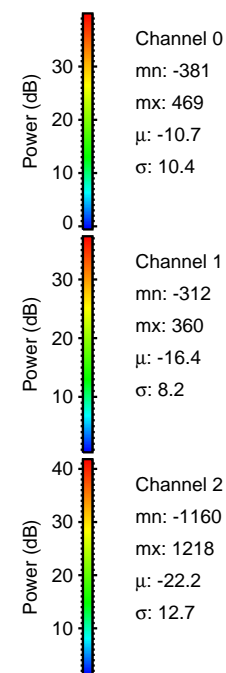
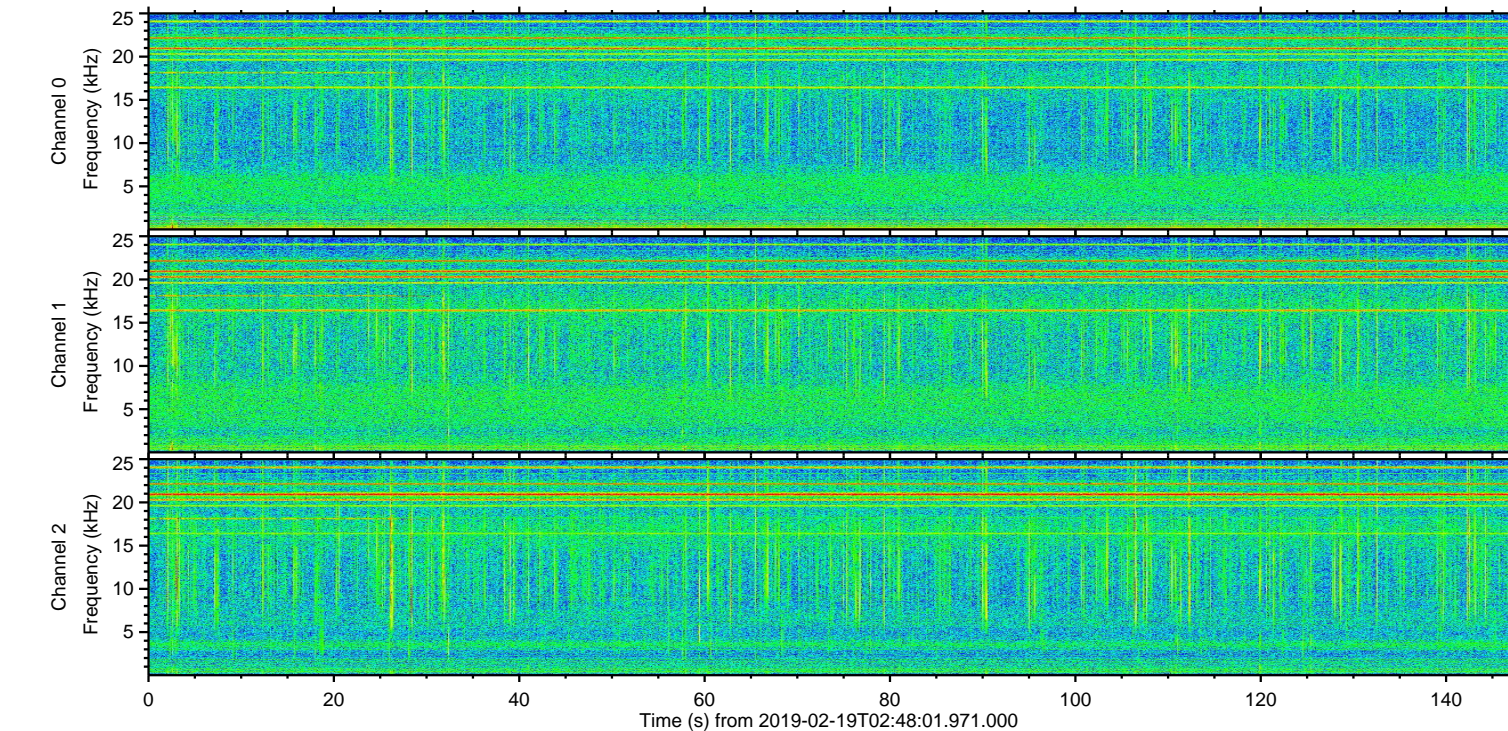
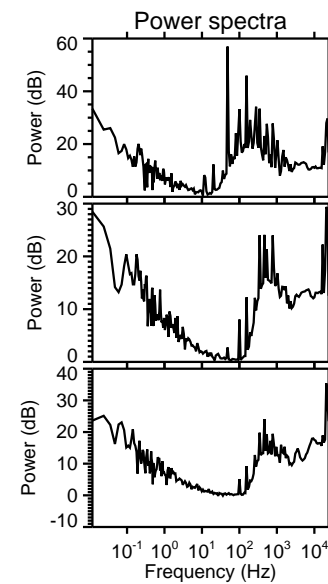
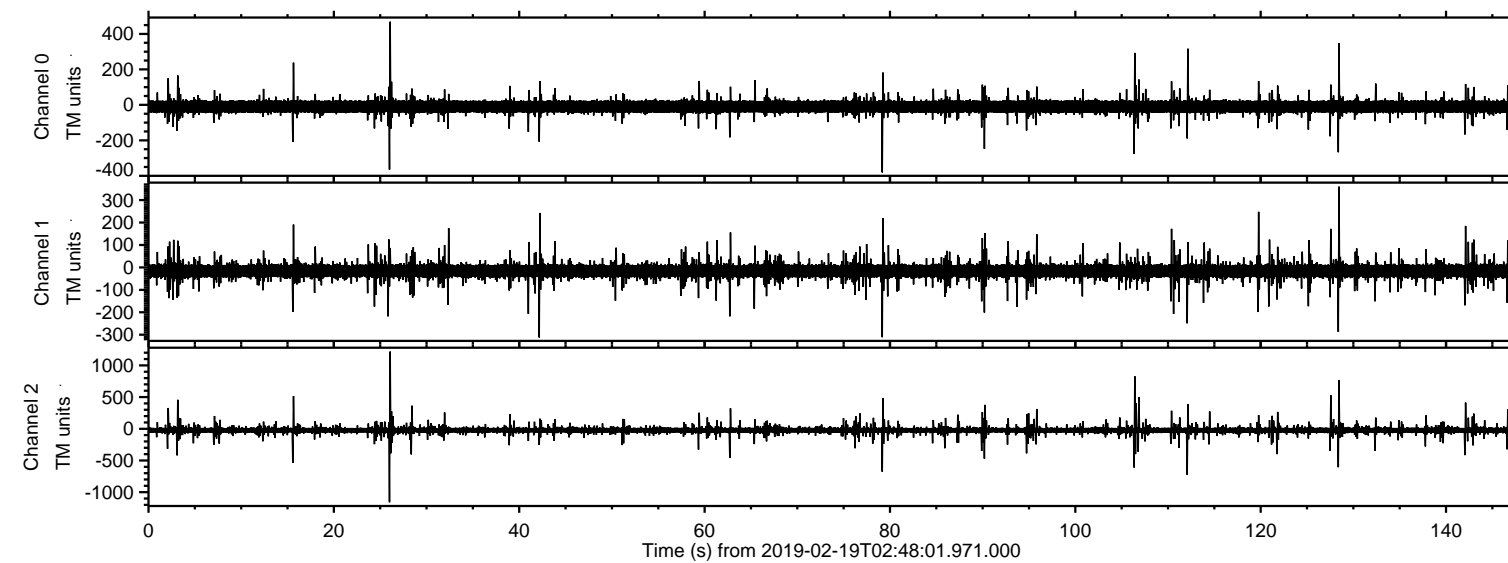


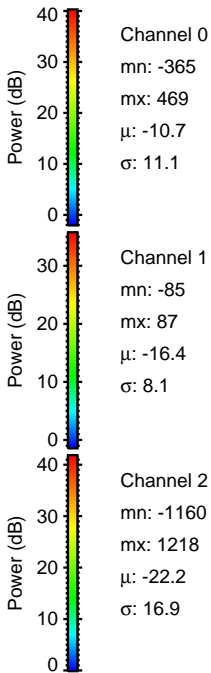
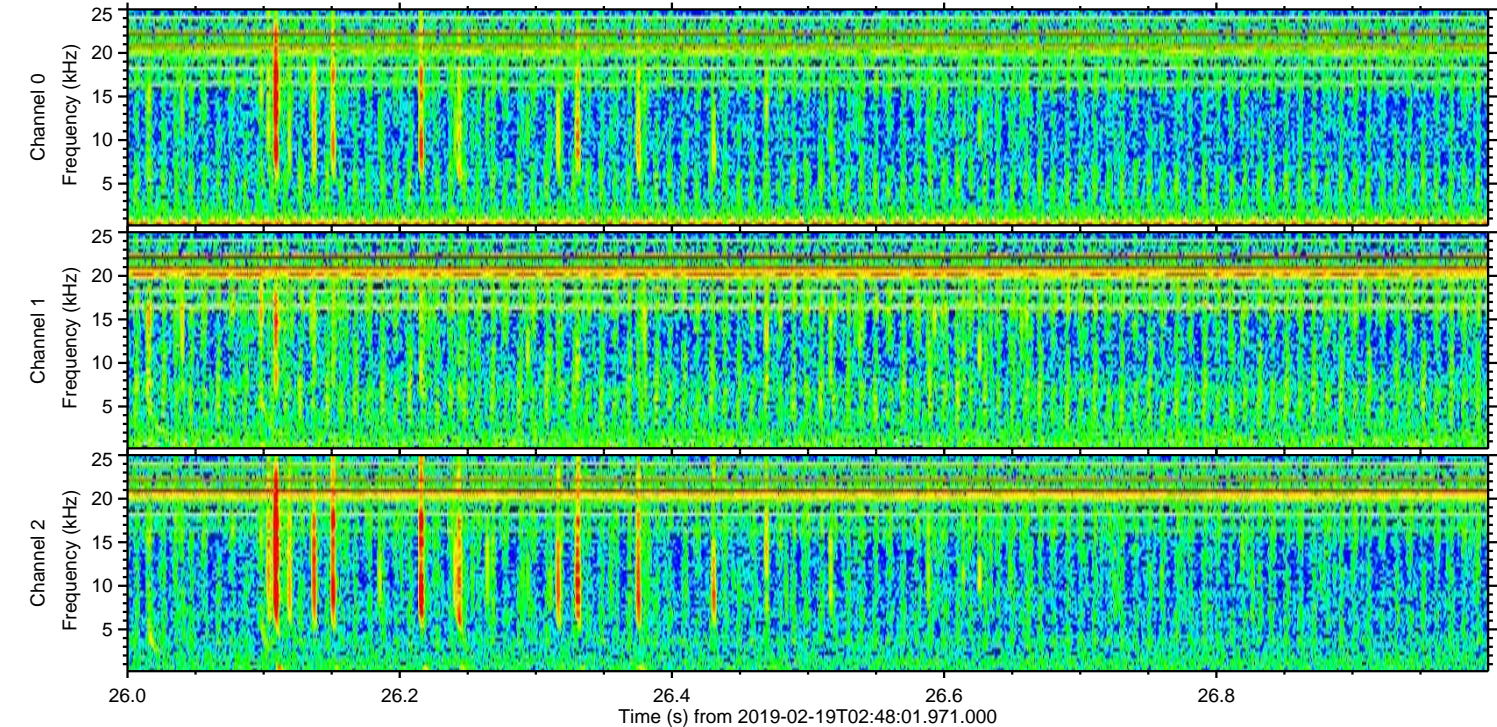
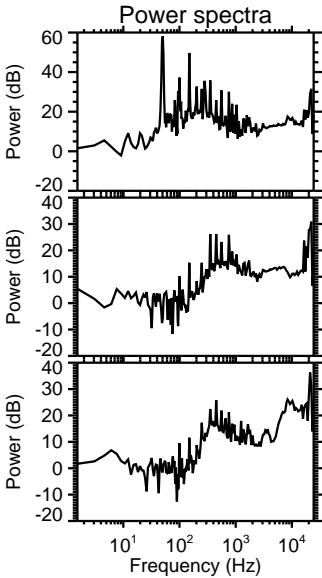
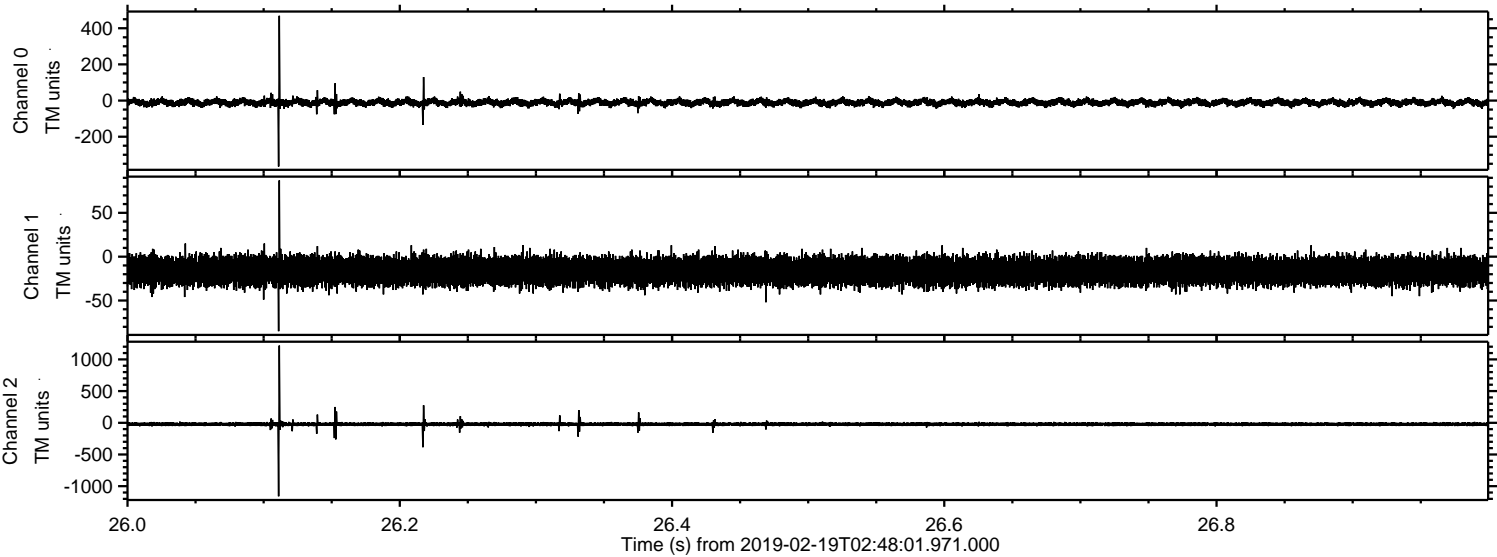
ELMAVAN 3D WAVEFORMS (Measured data sampled at 50 kHz) 51000 packets of 144 samples from 2019-02-19T02:48:01.971.000.

Processed Tue Feb 19 03:55:51 2019 by ELM ver.2012-10-06 from 001__elm20190219_024800__dat00.bin

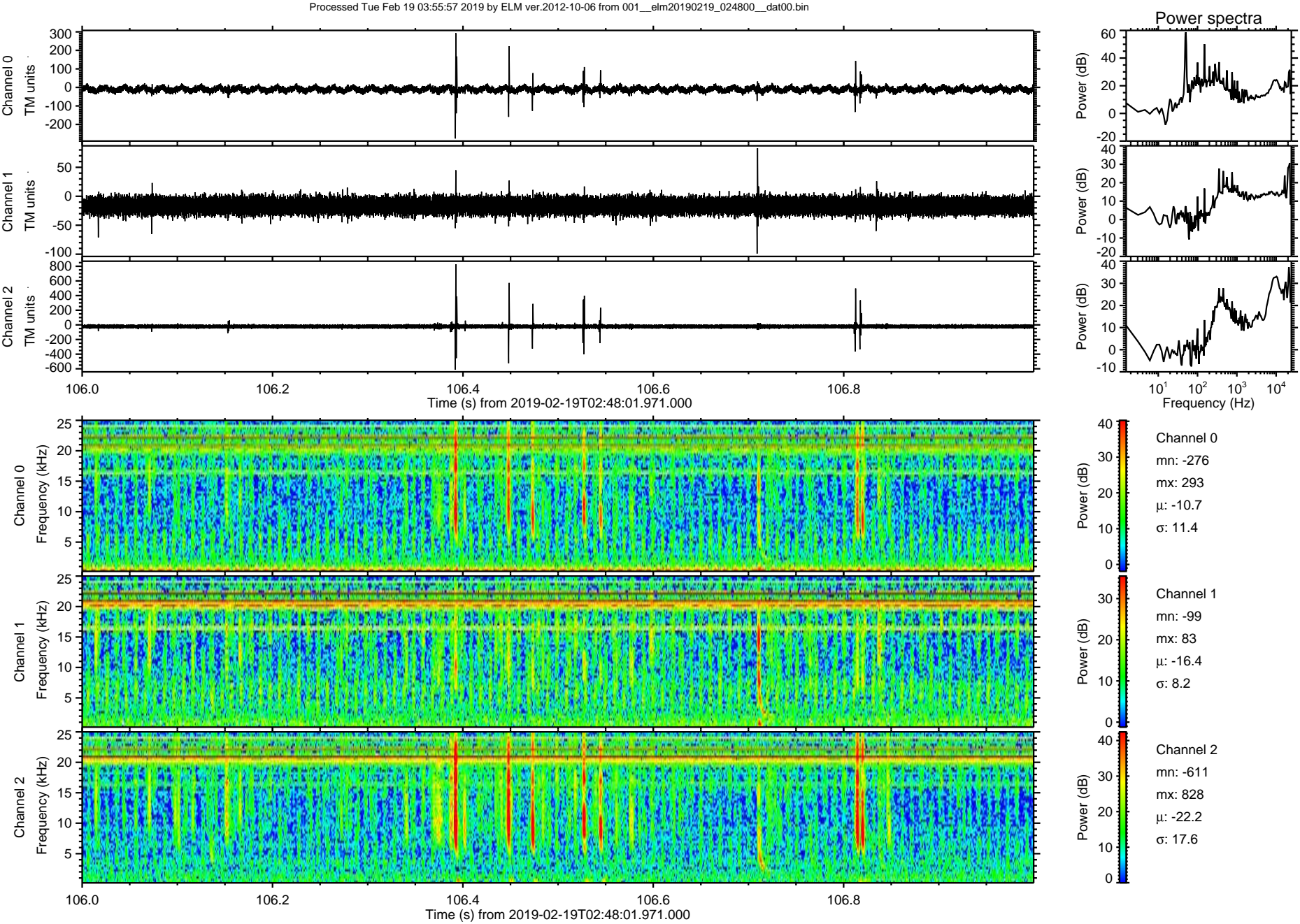


ELMAVAN 3D WAVEFORMS (Measured data sampled at 50 kHz) 51000 packets of 144 samples from 2019-02-19T02:48:01.971.000. Part 27/147

Processed Tue Feb 19 03:55:57 2019 by ELM ver.2012-10-06 from 001__elm20190219_024800__dat00.bin

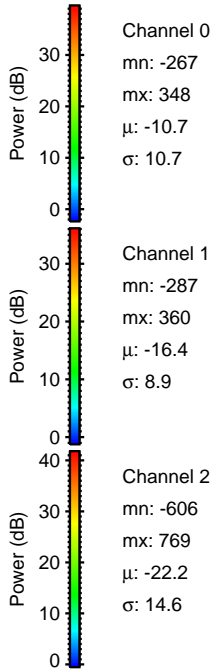
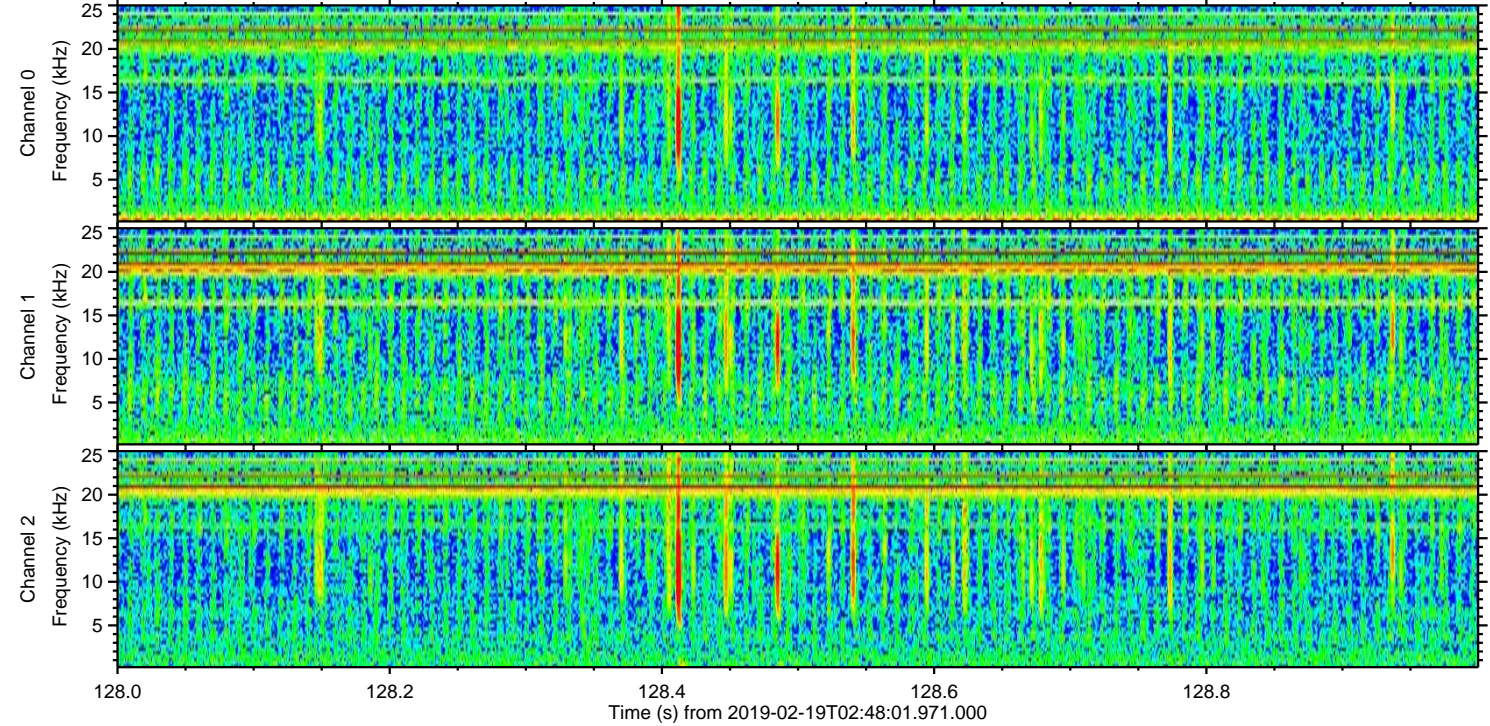
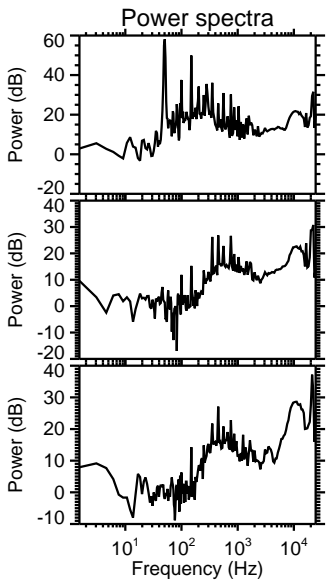
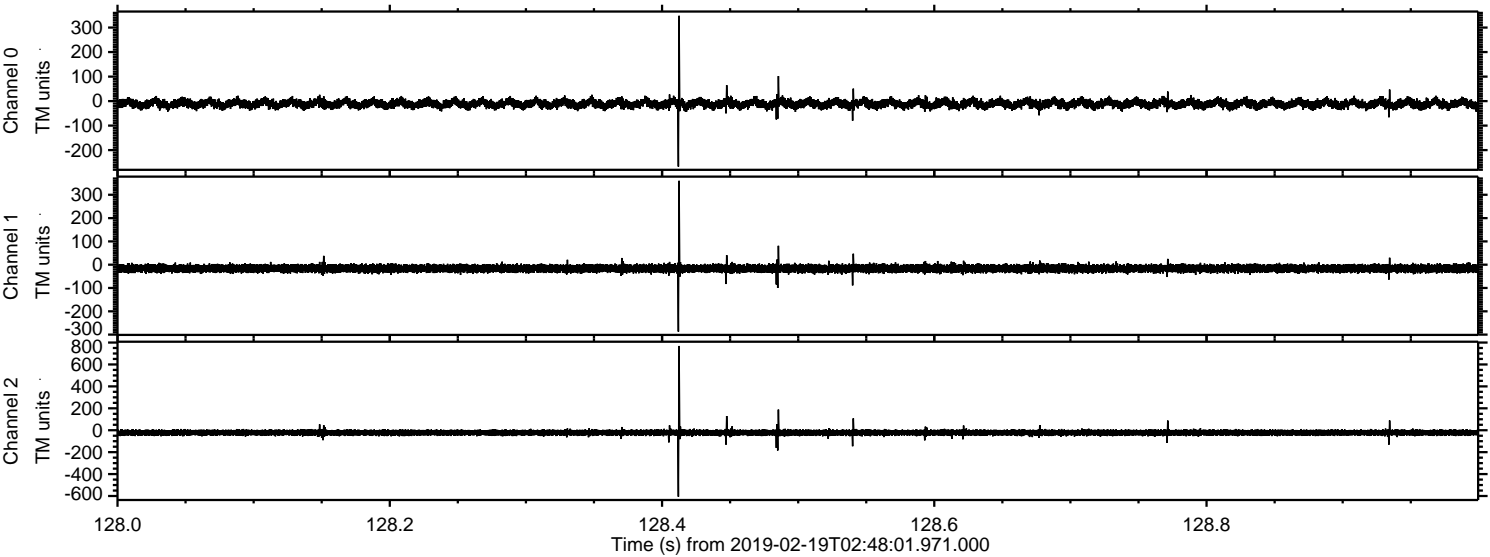


ELMAVAN 3D WAVEFORMS (Measured data sampled at 50 kHz) 51000 packets of 144 samples from 2019-02-19T02:48:01.971.000. Part 107/147



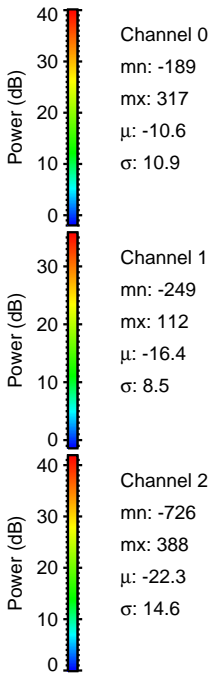
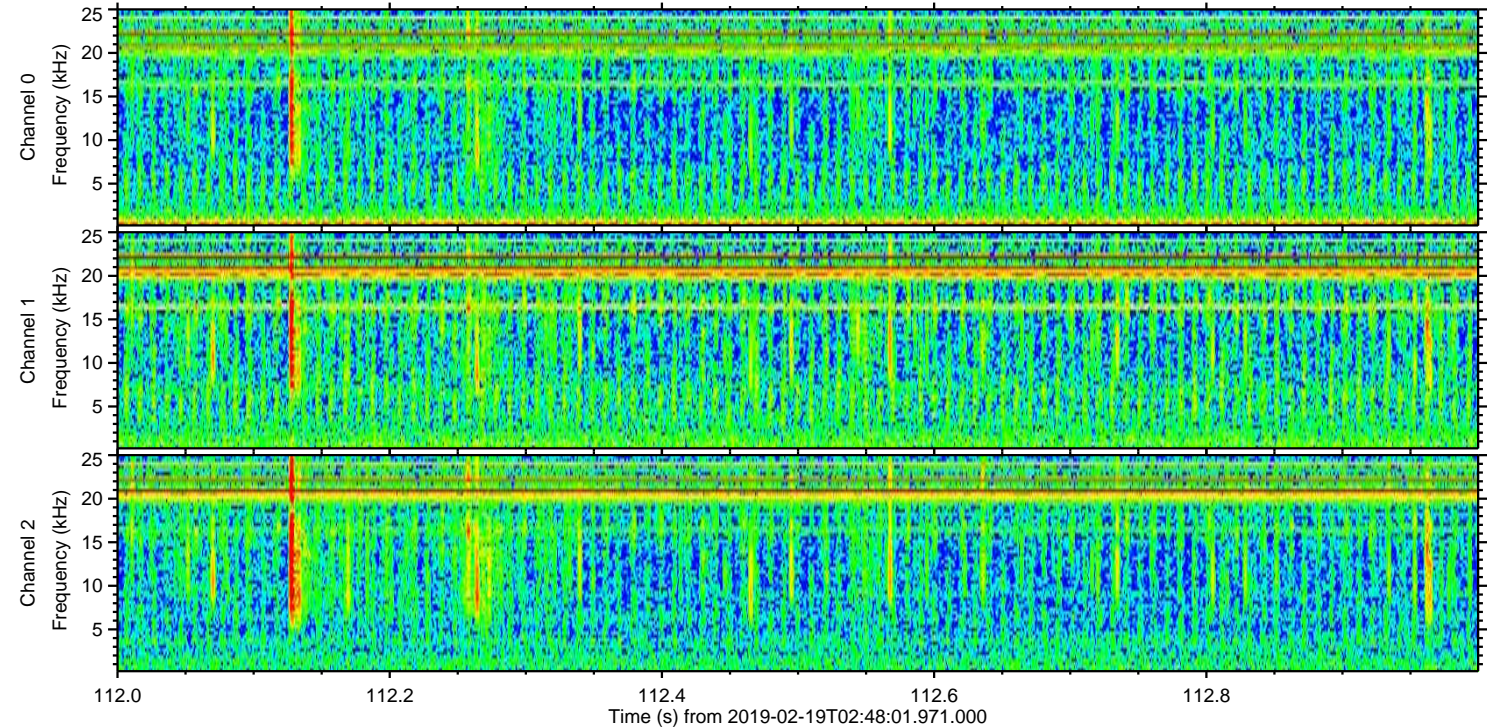
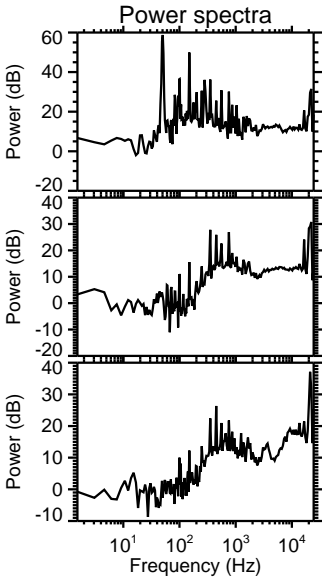
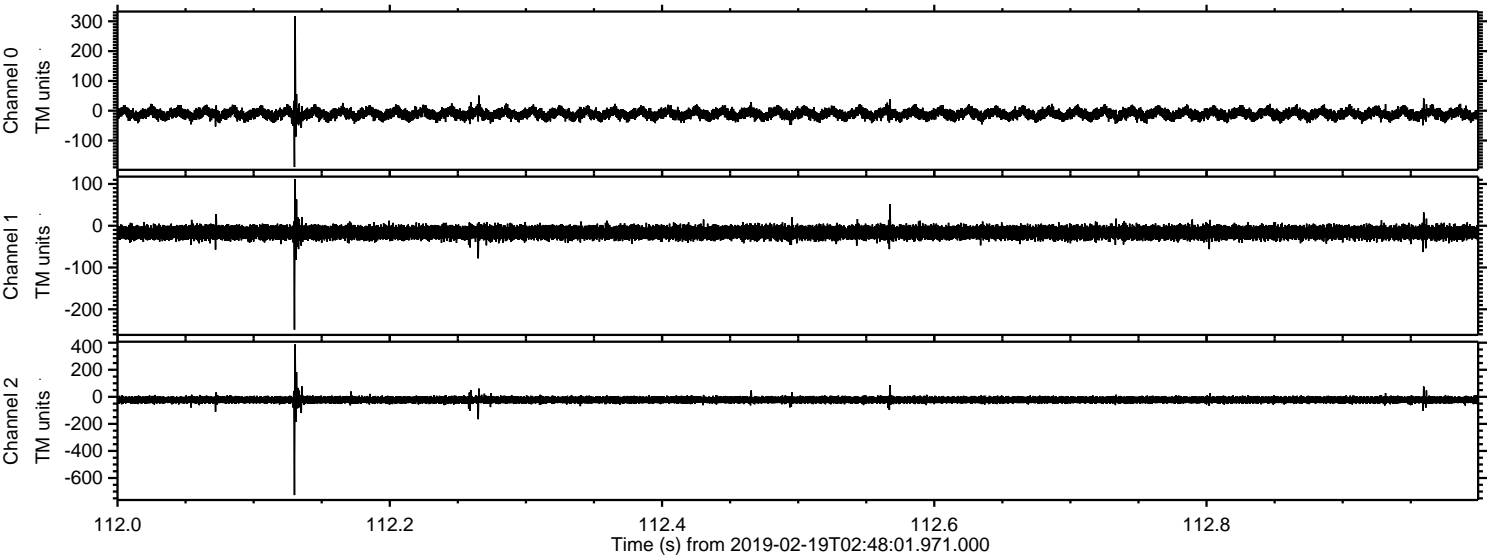
ELMAVAN 3D WAVEFORMS (Measured data sampled at 50 kHz) 51000 packets of 144 samples from 2019-02-19T02:48:01.971.000. Part 129/147

Processed Tue Feb 19 03:55:58 2019 by ELM ver.2012-10-06 from 001__elm20190219_024800__dat00.bin

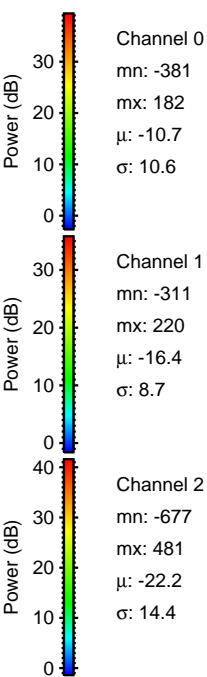
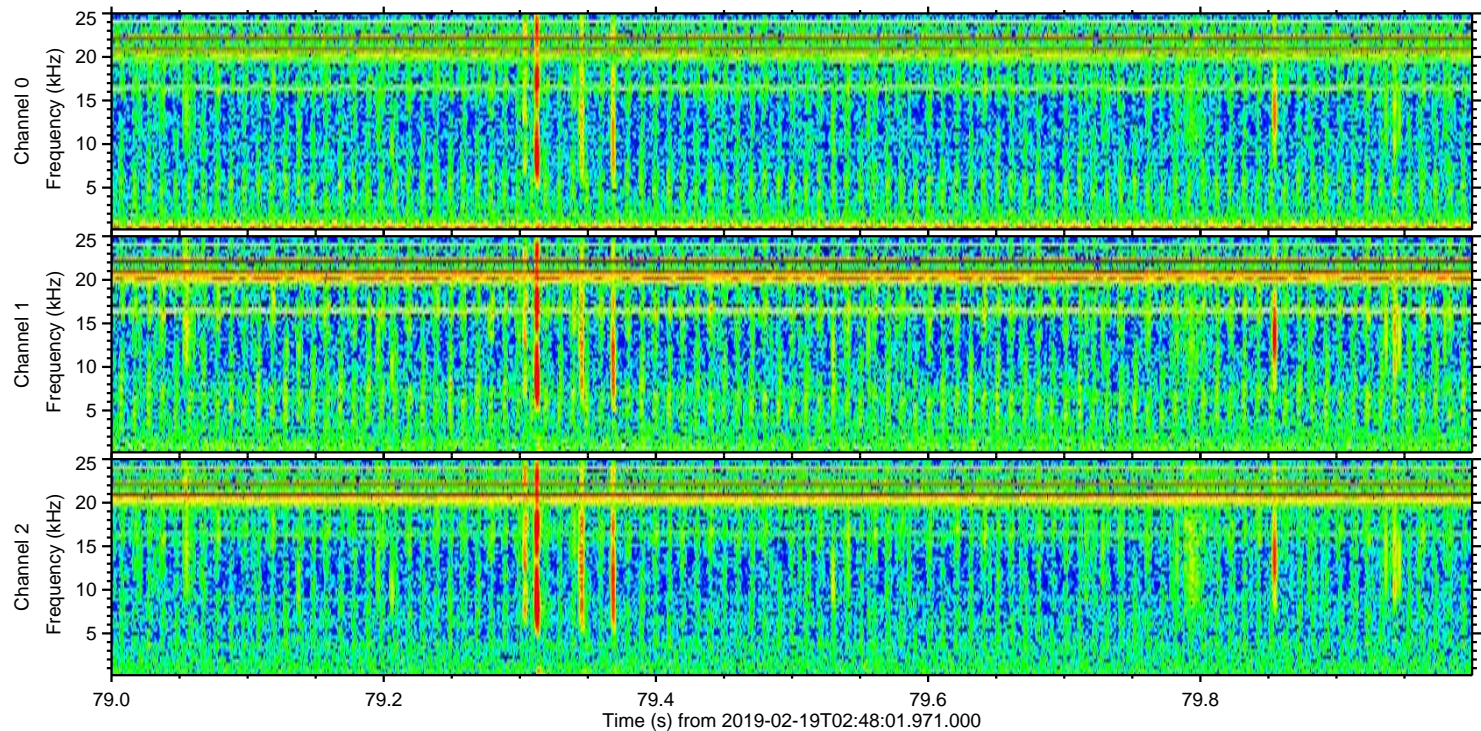
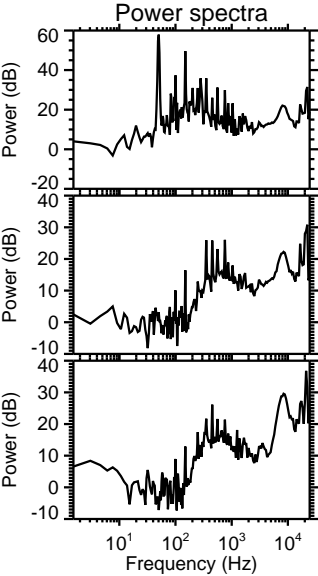
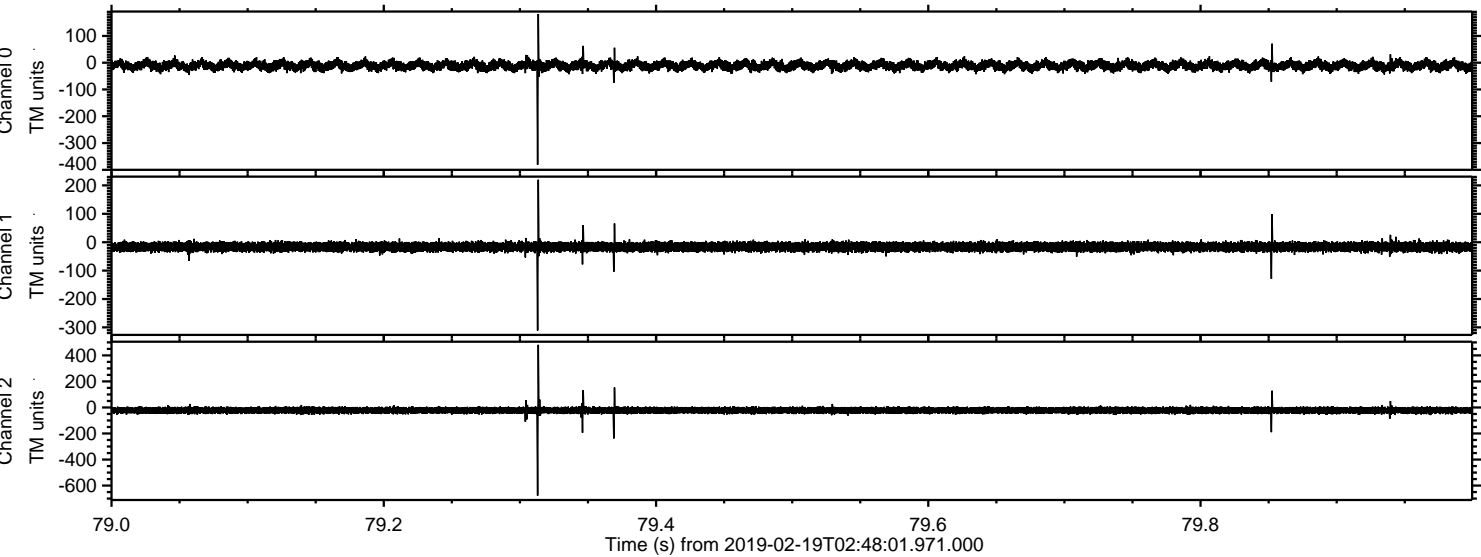


ELMAVAN 3D WAVEFORMS (Measured data sampled at 50 kHz) 51000 packets of 144 samples from 2019-02-19T02:48:01.971.000. Part 113/147

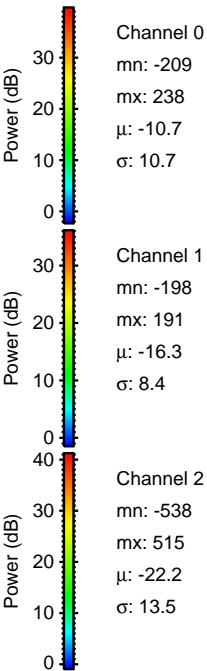
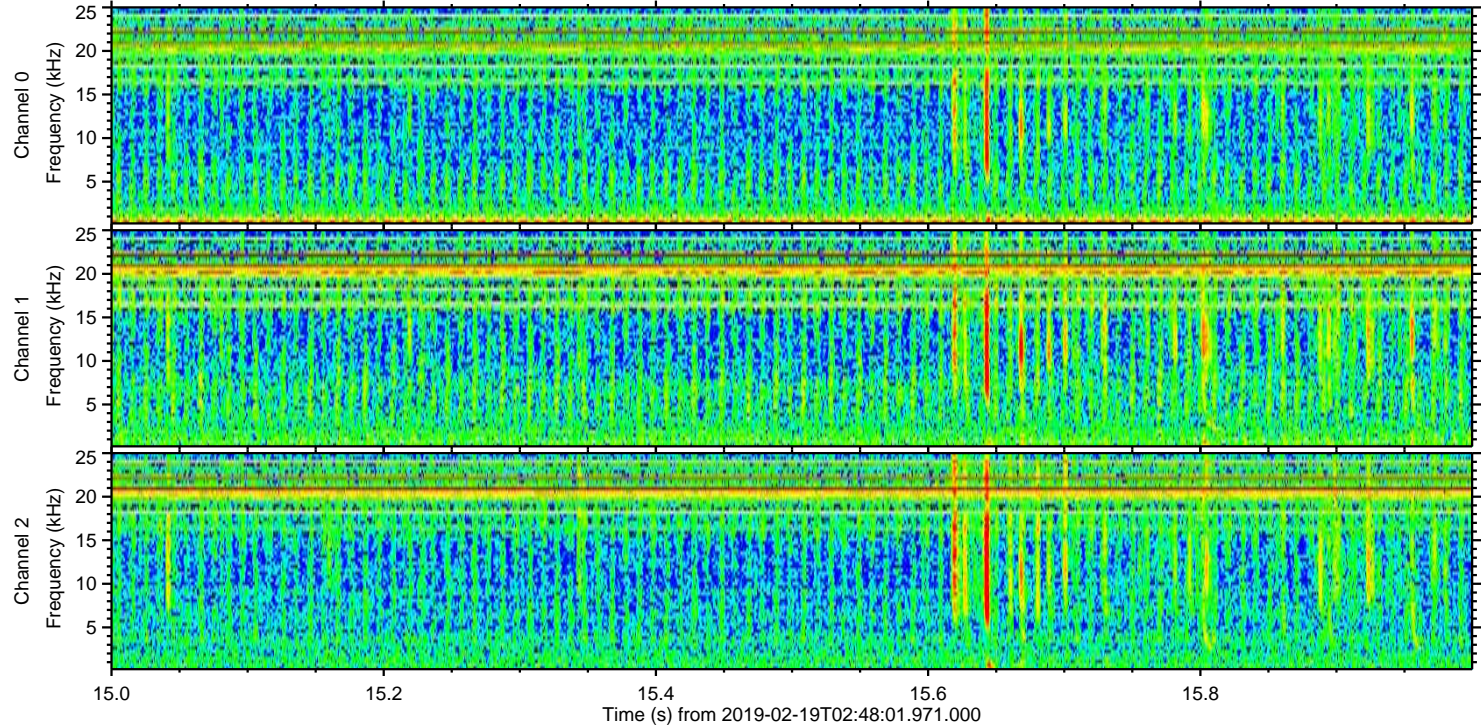
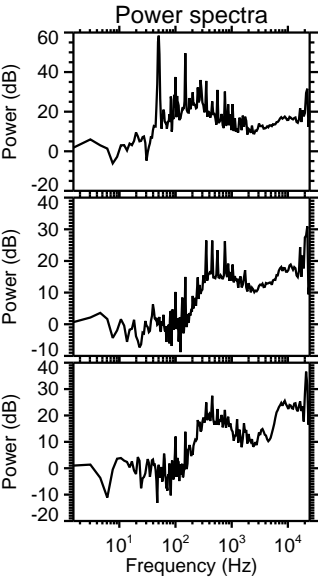
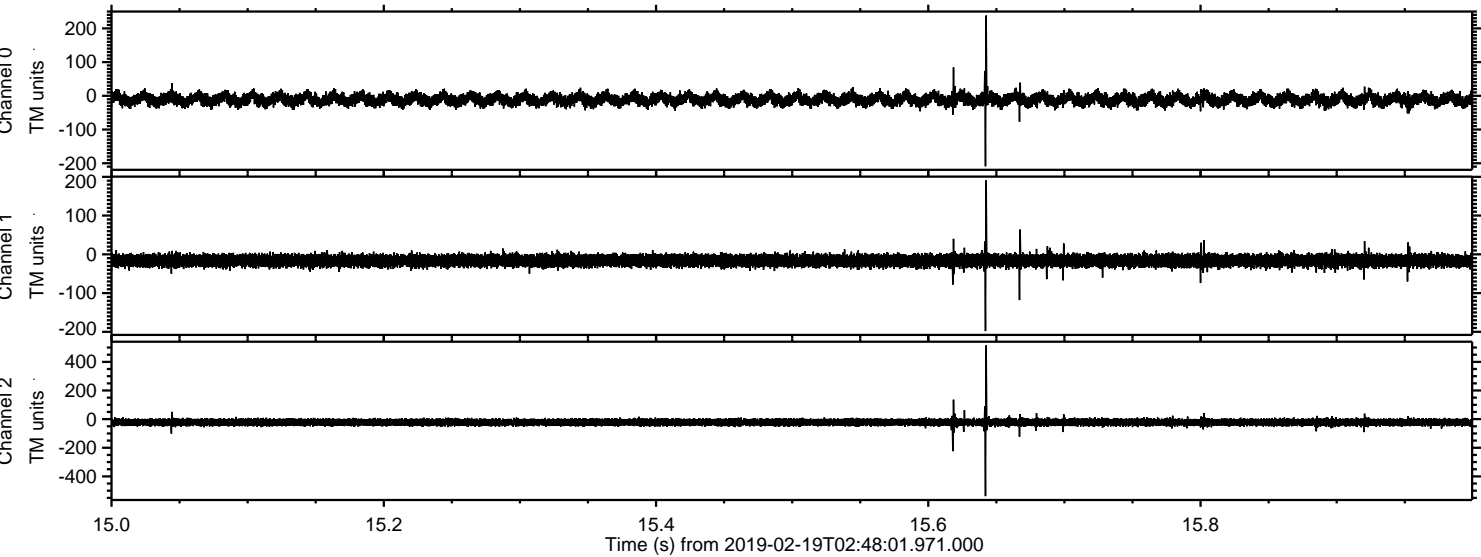
Processed Tue Feb 19 03:55:59 2019 by ELM ver.2012-10-06 from 001__elm20190219_024800__dat00.bin



Processed Tue Feb 19 03:55:59 2019 by ELM ver.2012-10-06 from 001__elm20190219_024800__dat00.bin

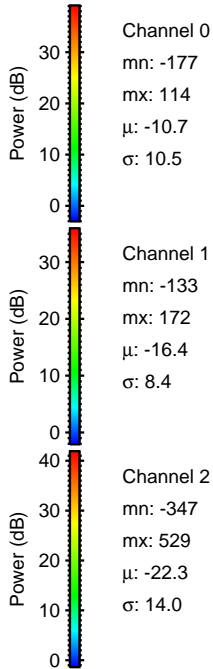
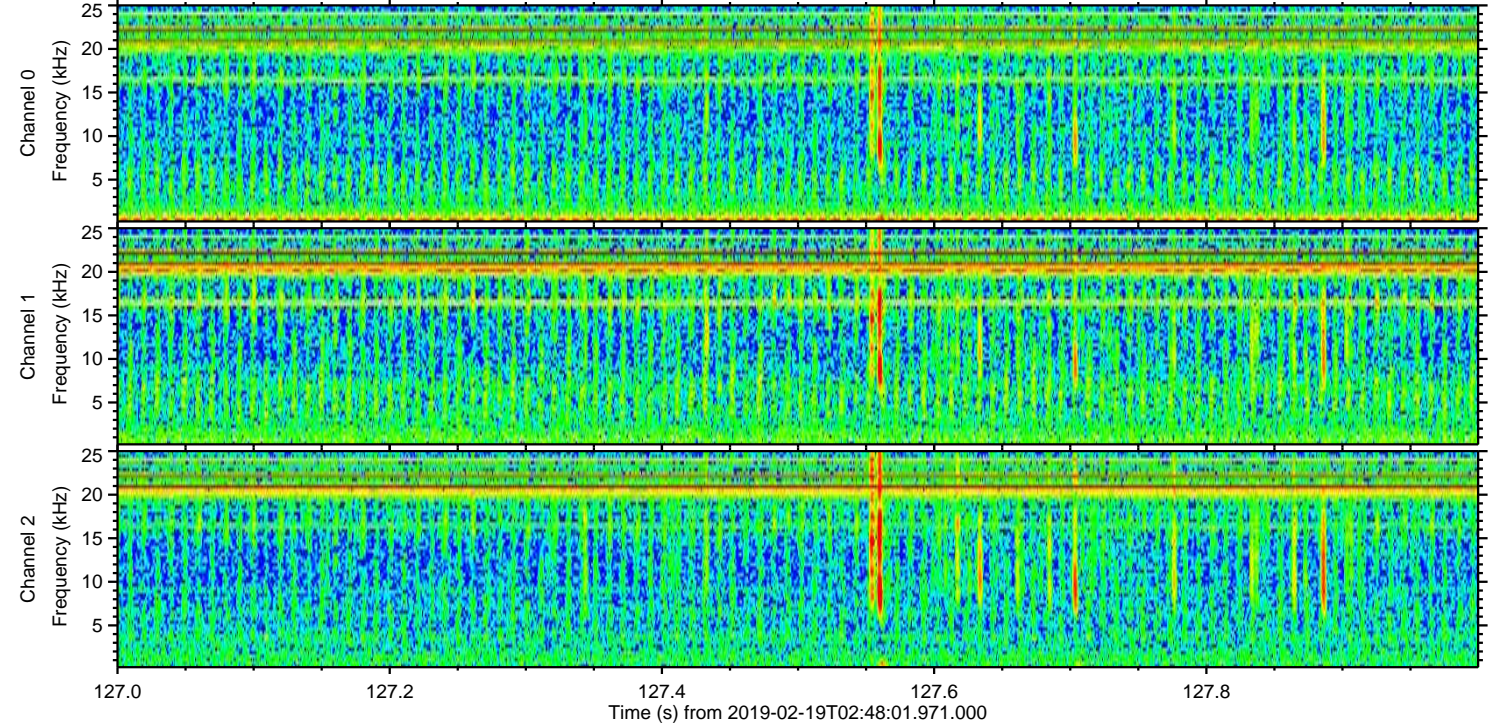
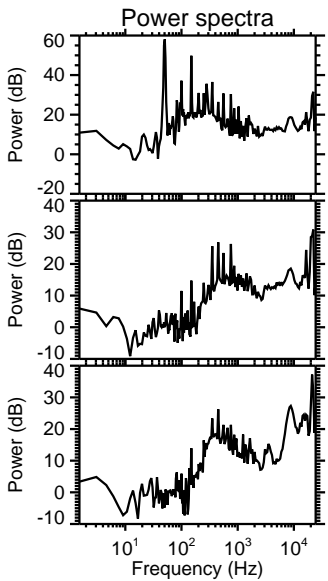
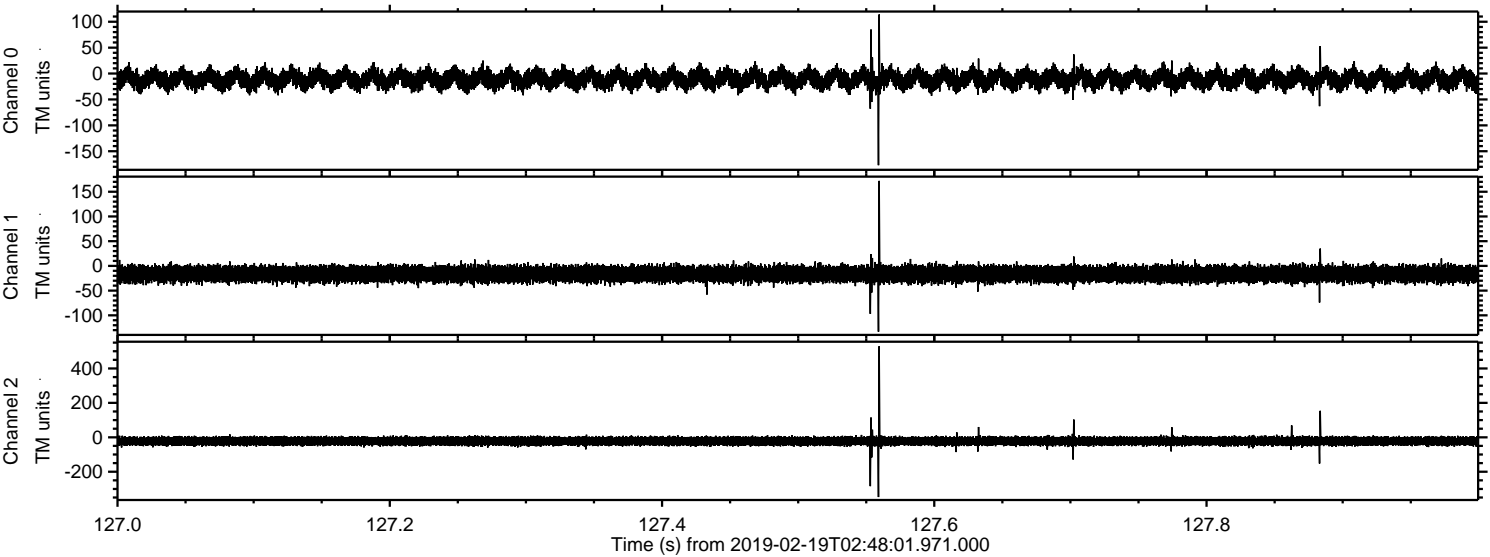


Processed Tue Feb 19 03:56:00 2019 by ELM ver.2012-10-06 from 001__elm20190219_024800__dat00.bin

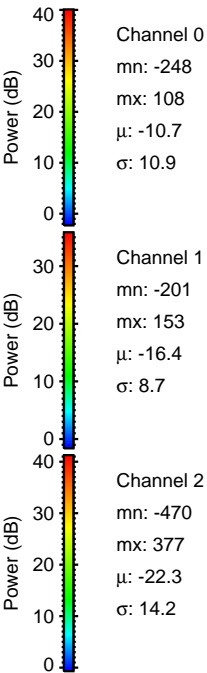
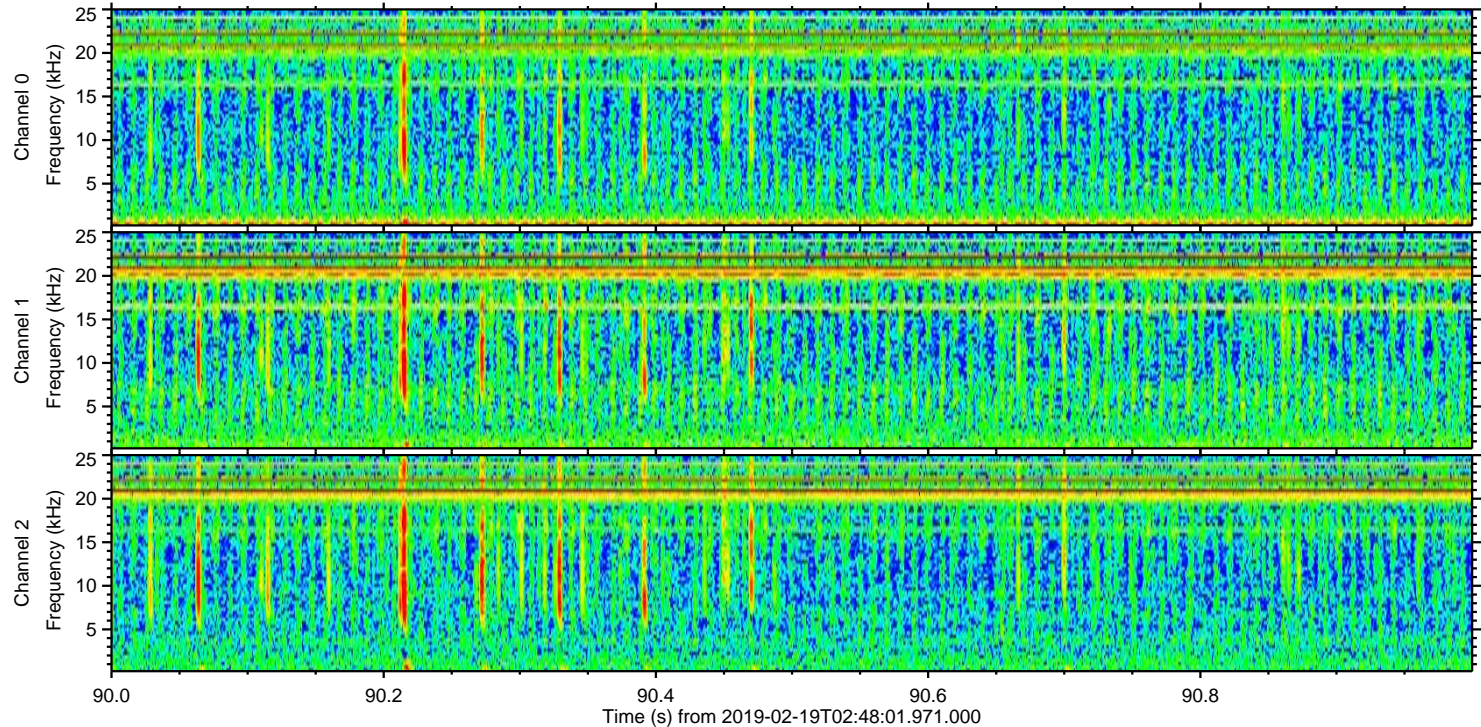
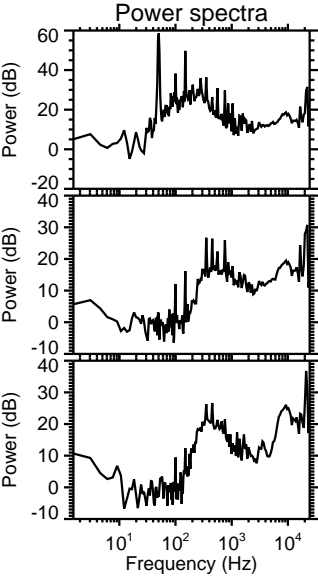
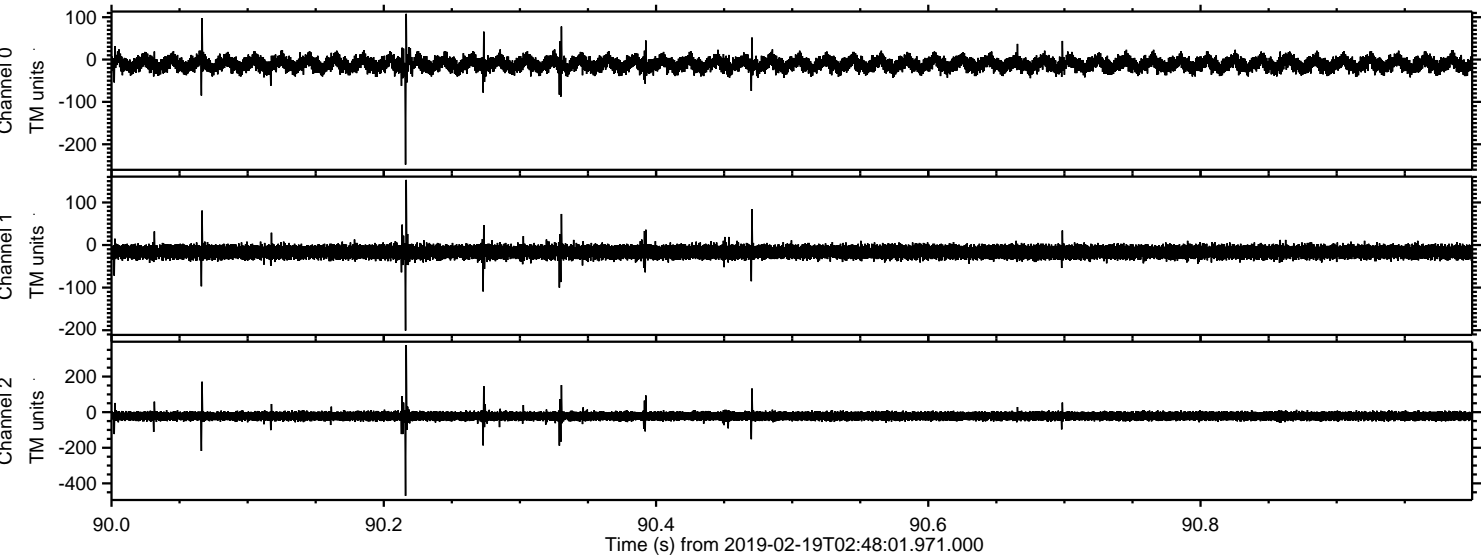


ELMAVAN 3D WAVEFORMS (Measured data sampled at 50 kHz) 51000 packets of 144 samples from 2019-02-19T02:48:01.971.000. Part 128/147

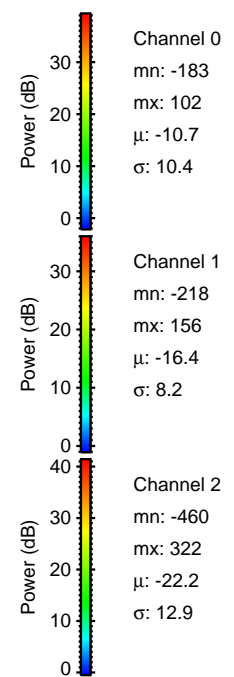
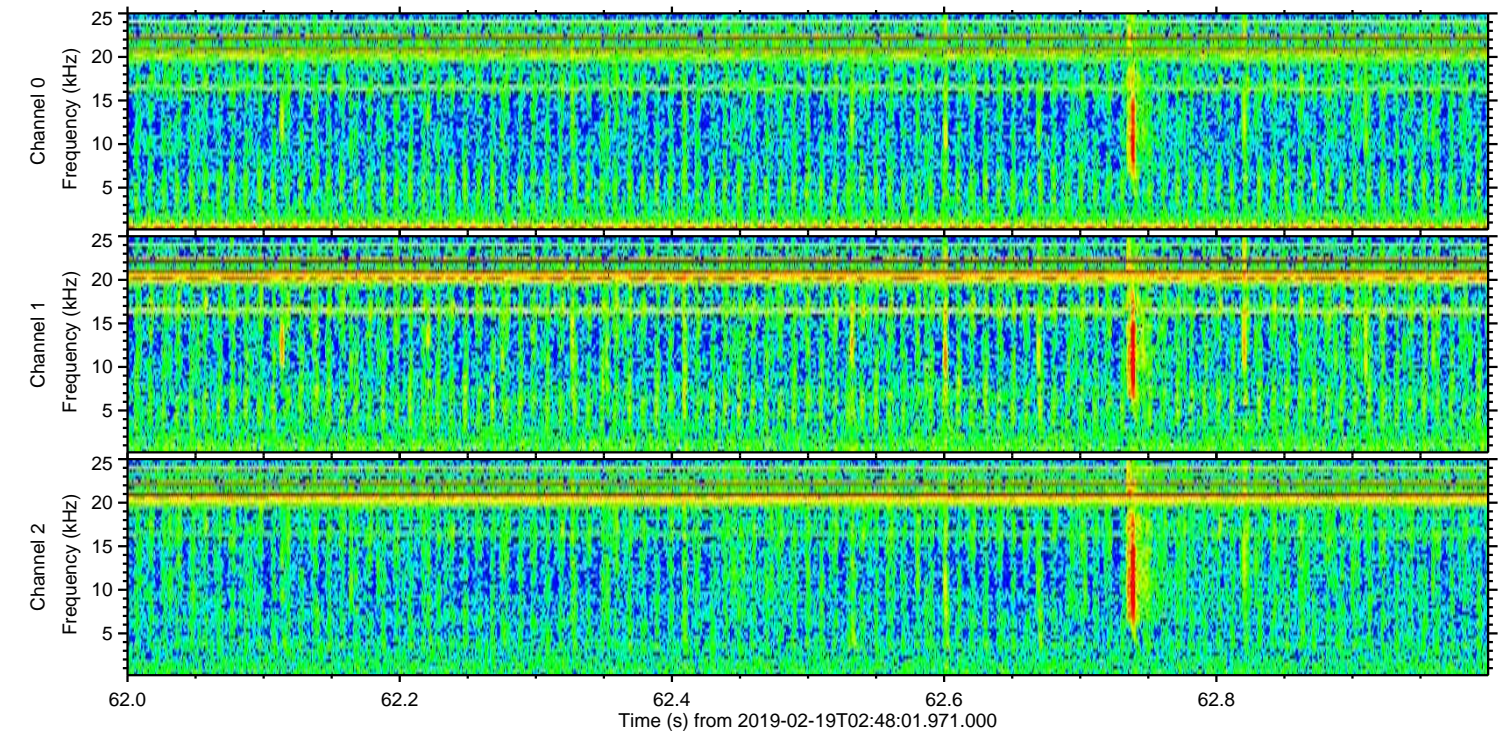
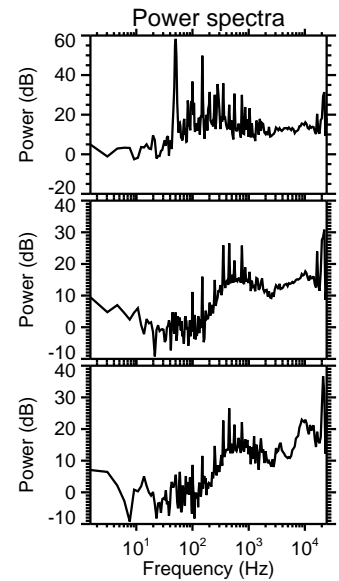
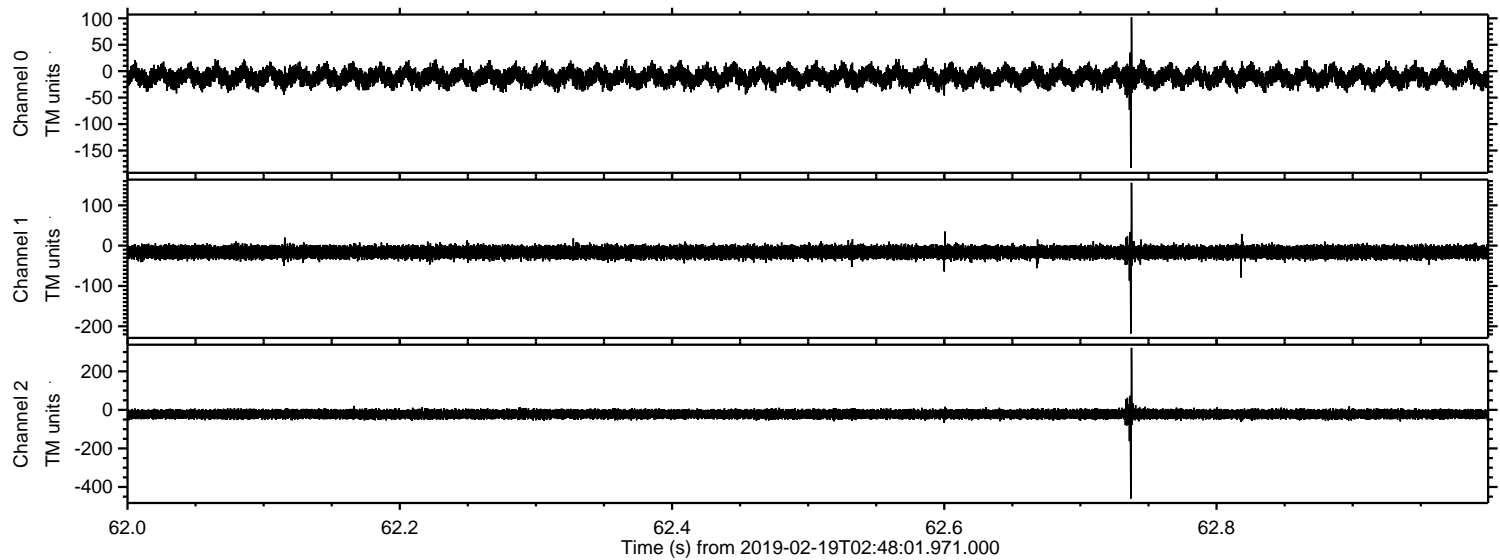
Processed Tue Feb 19 03:56:01 2019 by ELM ver.2012-10-06 from 001__elm20190219_024800__dat00.bin



Processed Tue Feb 19 03:56:01 2019 by ELM ver.2012-10-06 from 001__elm20190219_024800__dat00.bin



Processed Tue Feb 19 03:56:02 2019 by ELM ver.2012-10-06 from 001__elm20190219_024800__dat00.bin



Processed Tue Feb 19 03:56:03 2019 by ELM ver.2012-10-06 from 001__elm20190219_024800__dat00.bin

