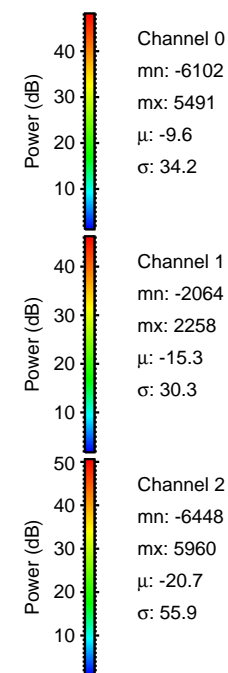
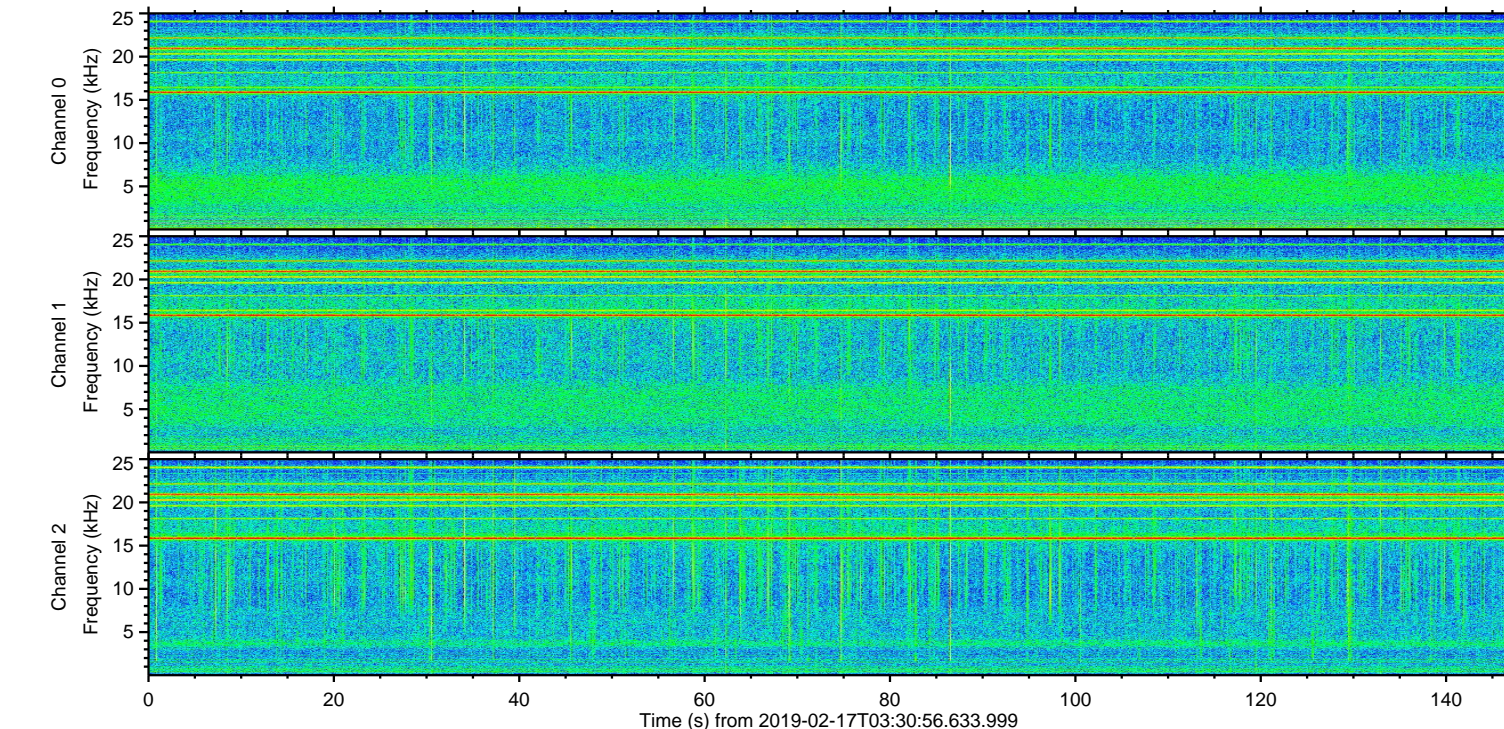
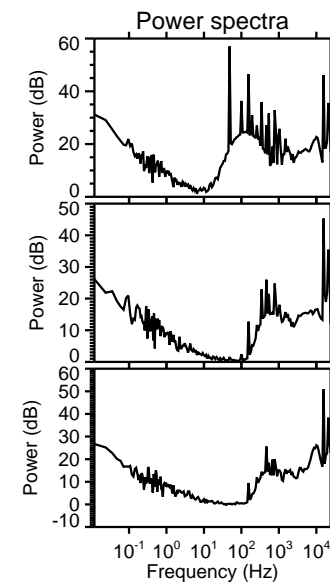
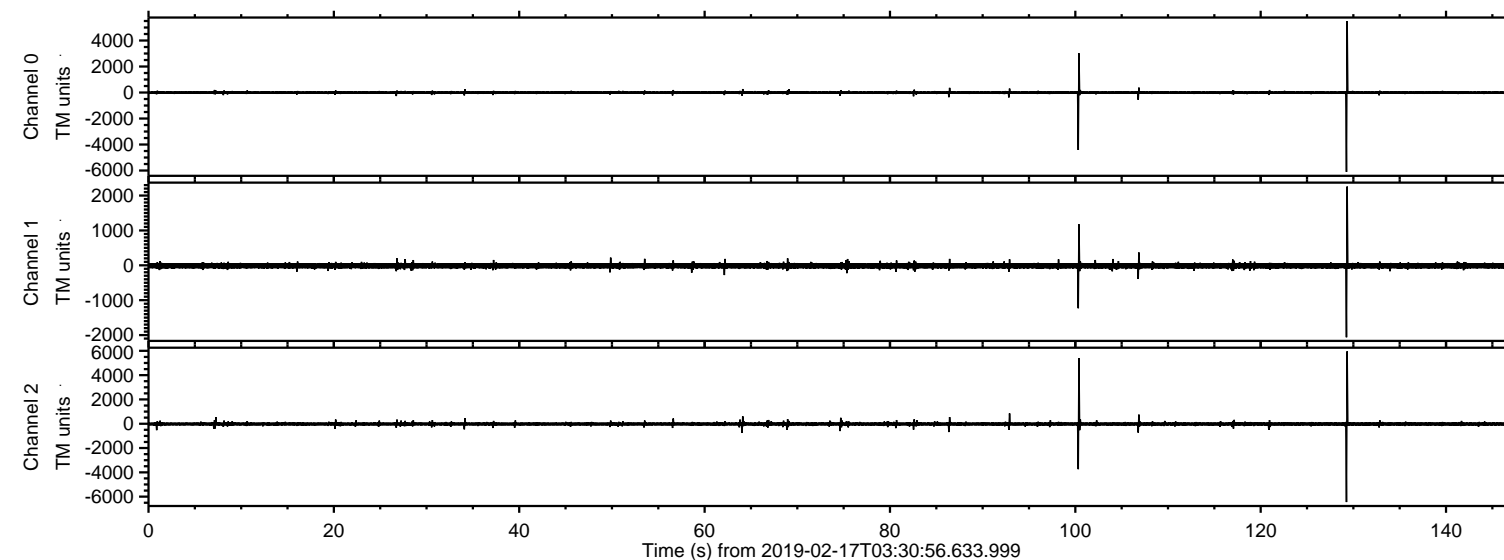


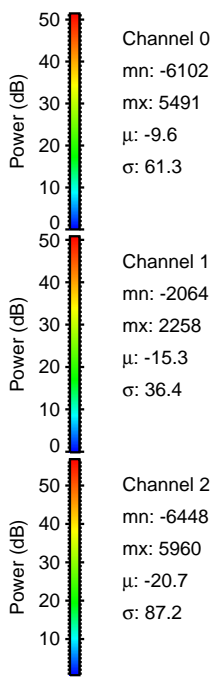
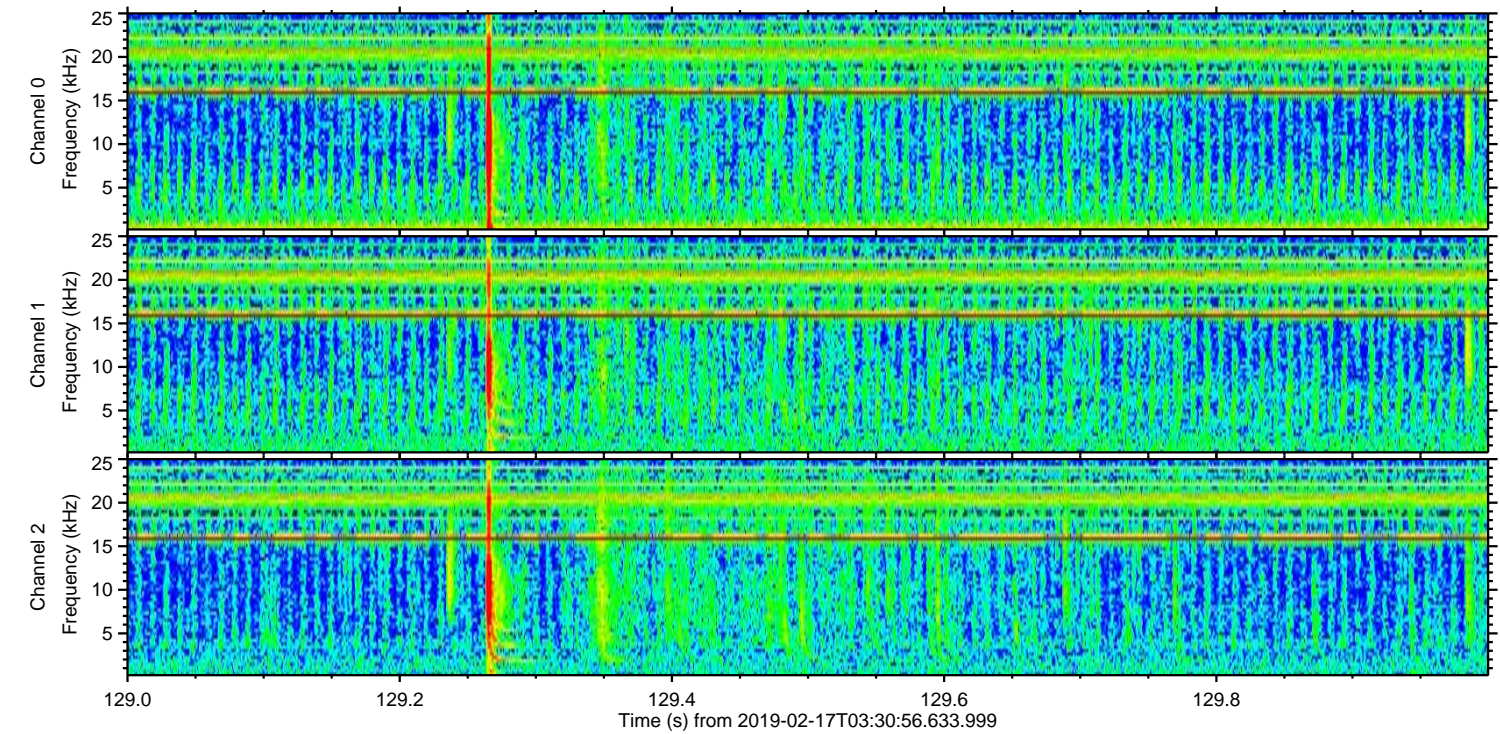
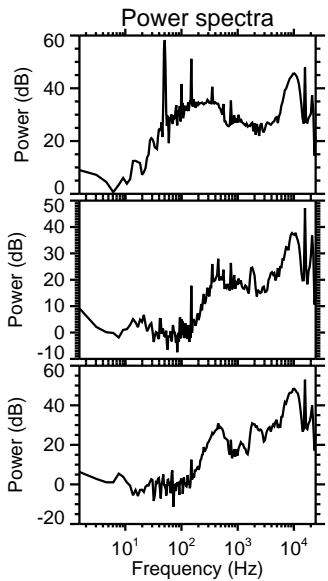
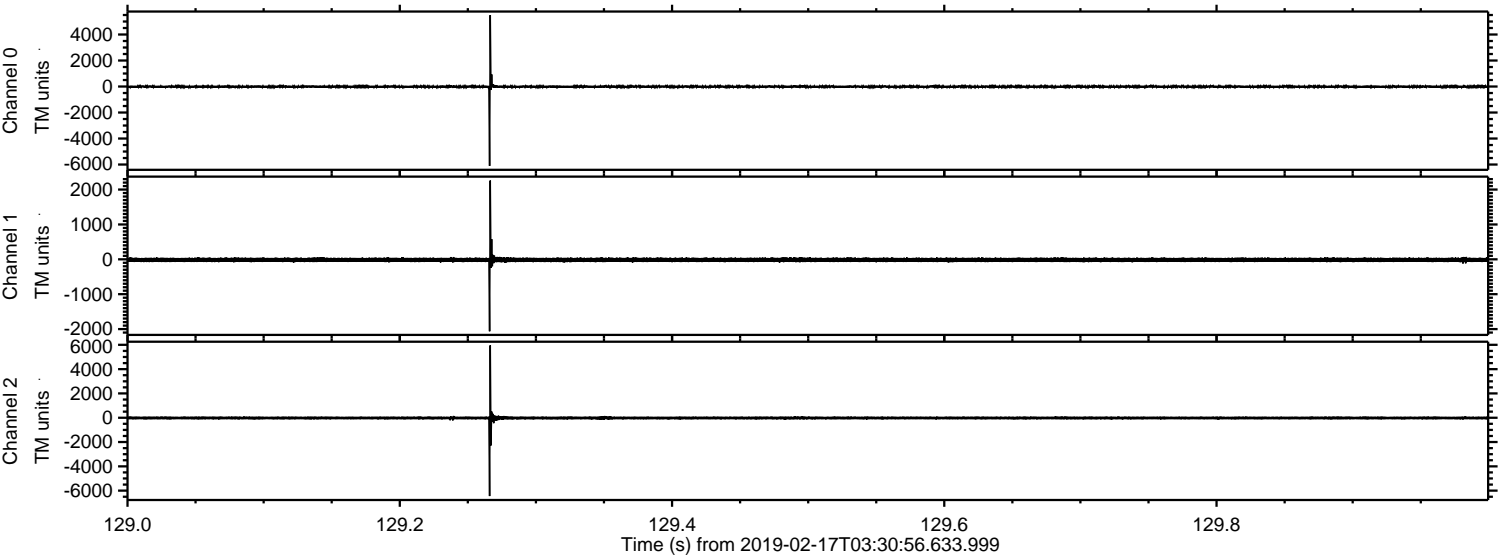
ELMAVAN 3D WAVEFORMS (Measured data sampled at 50 kHz) 51000 packets of 144 samples from 2019-02-17T03:30:56.633.999.

Processed Sun Feb 17 04:38:44 2019 by ELM ver.2012-10-06 from 001__elm20190217_033055__dat00.bin



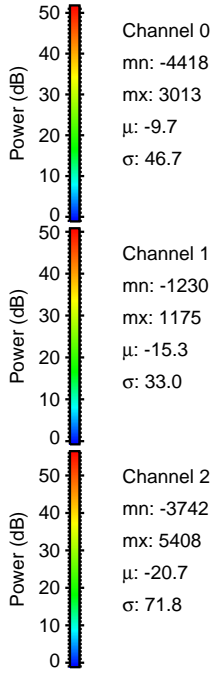
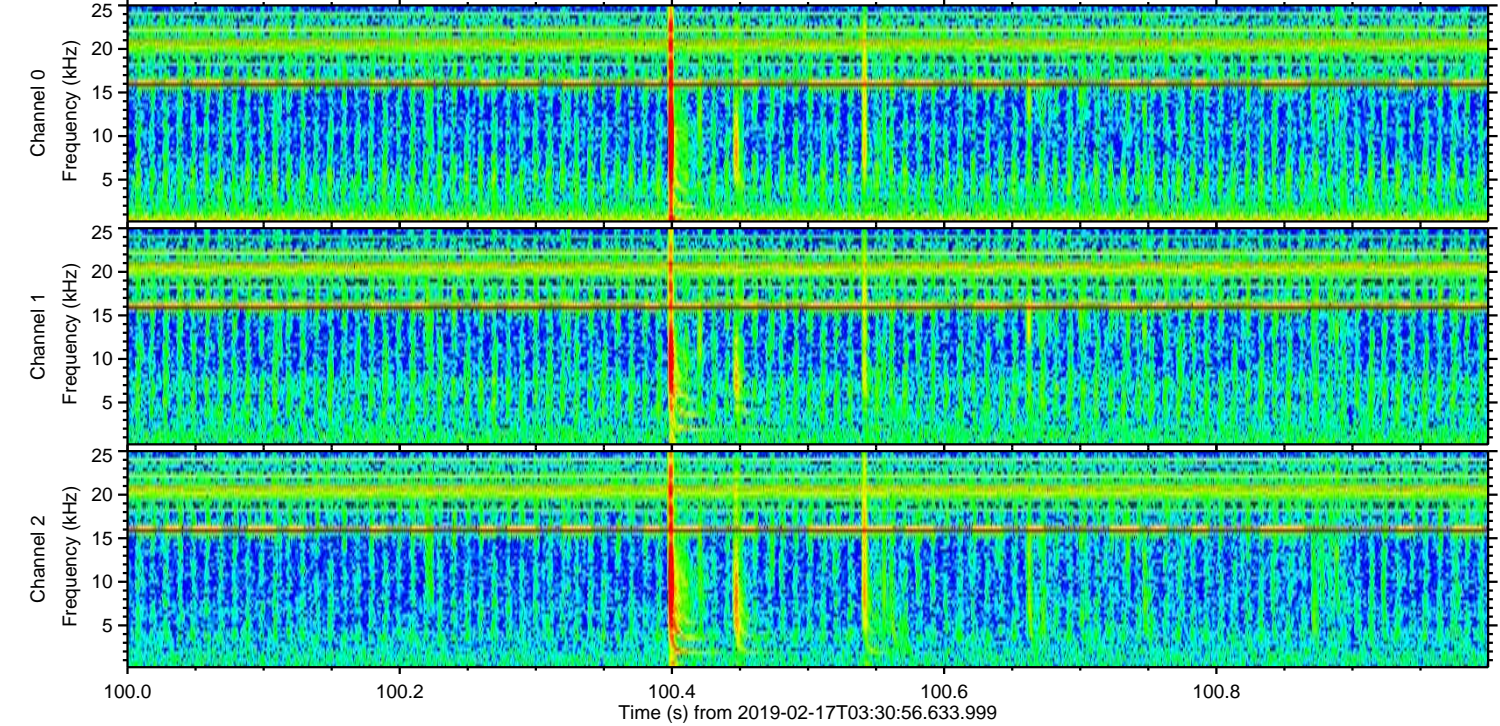
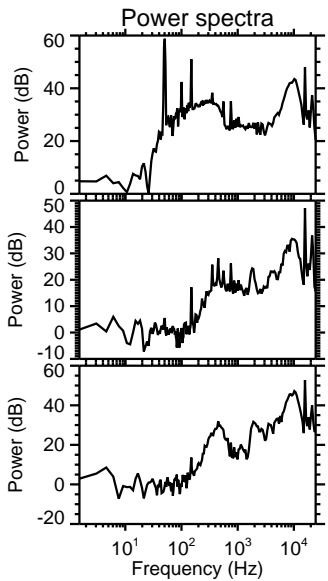
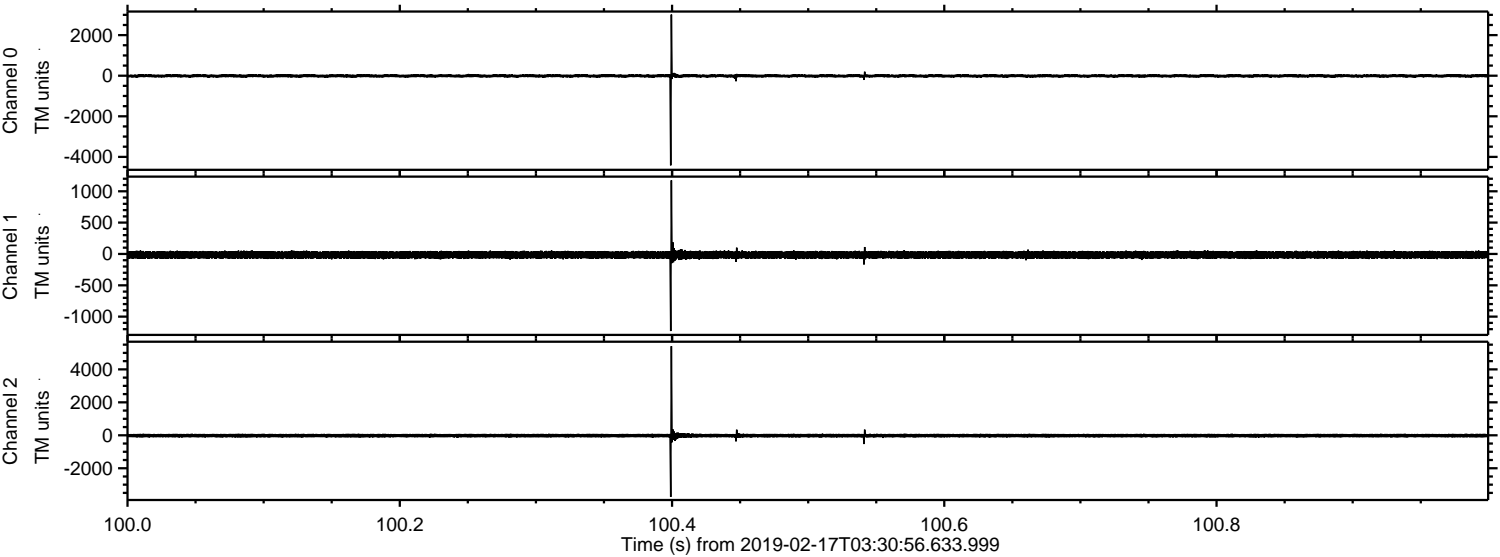
ELMAVAN 3D WAVEFORMS (Measured data sampled at 50 kHz) 51000 packets of 144 samples from 2019-02-17T03:30:56.633.999. Part 130/147

Processed Sun Feb 17 04:38:51 2019 by ELM ver.2012-10-06 from 001__elm20190217_033055__dat00.bin

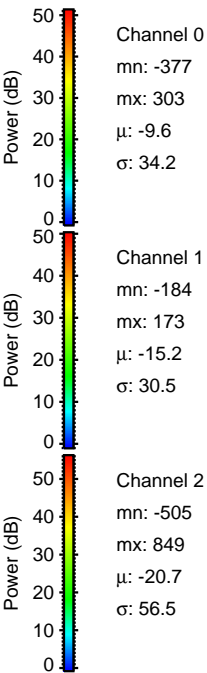
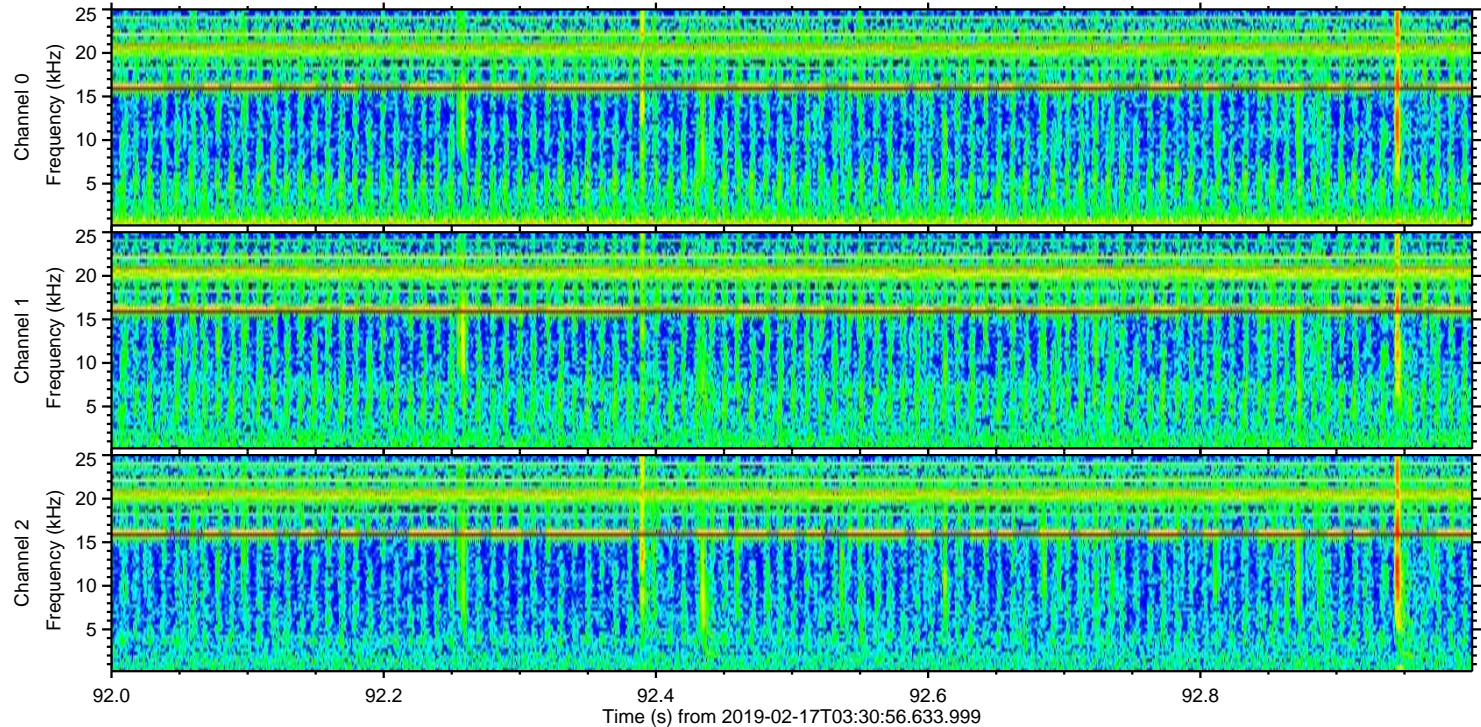
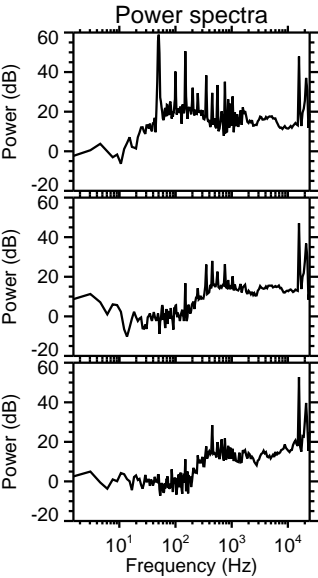
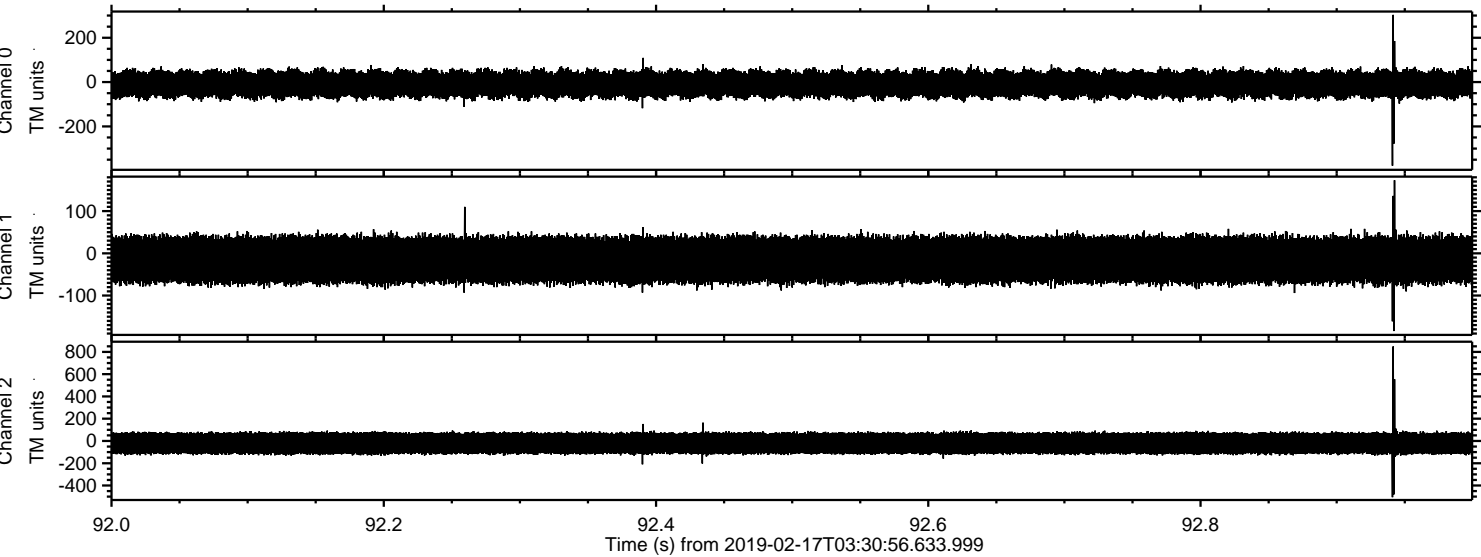


ELMAVAN 3D WAVEFORMS (Measured data sampled at 50 kHz) 51000 packets of 144 samples from 2019-02-17T03:30:56.633.999. Part 101/147

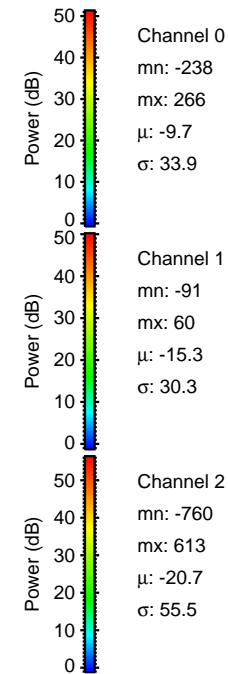
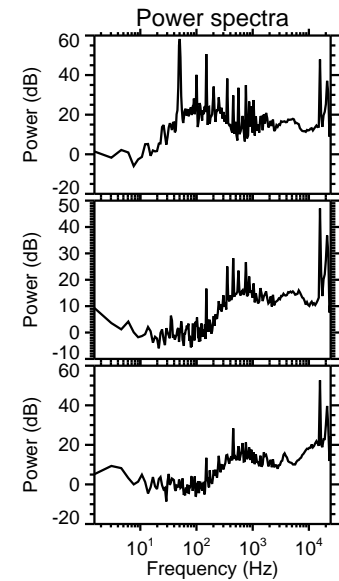
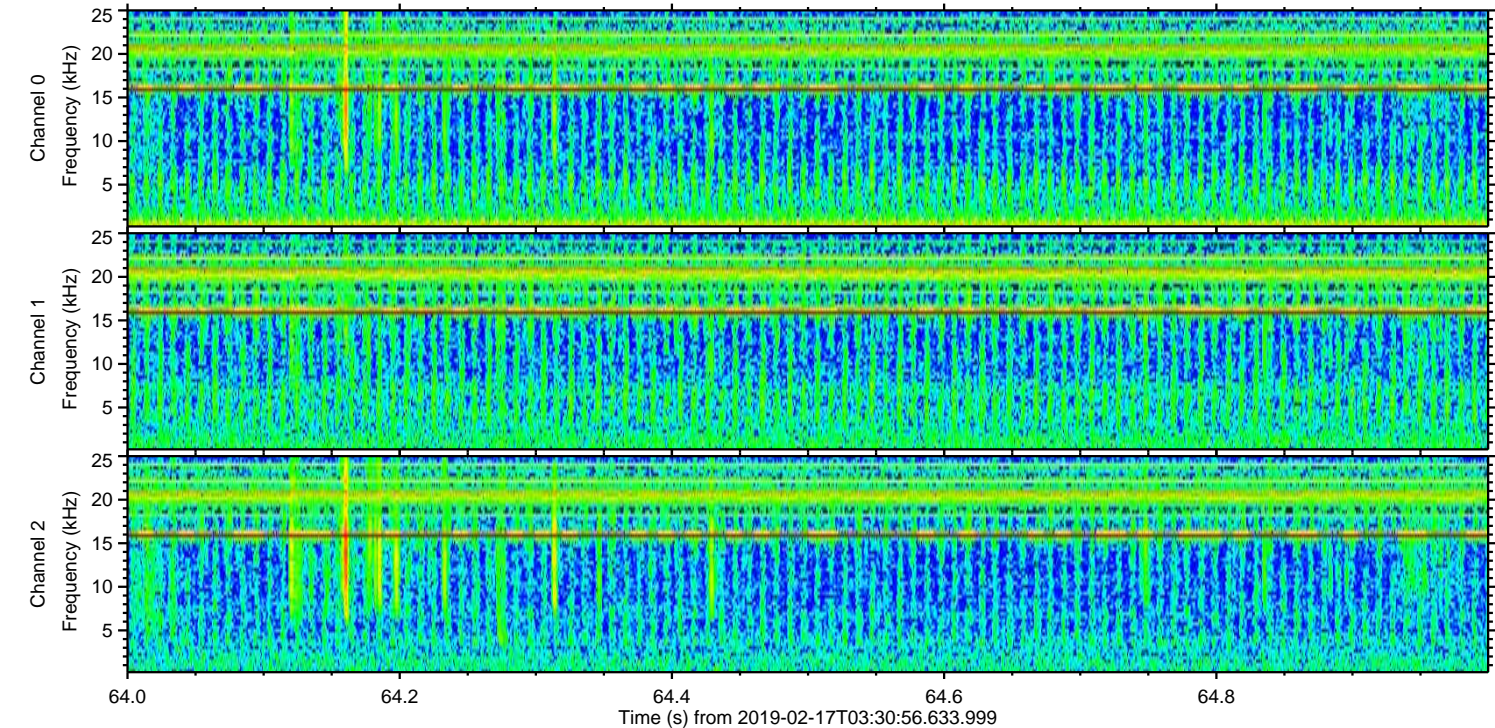
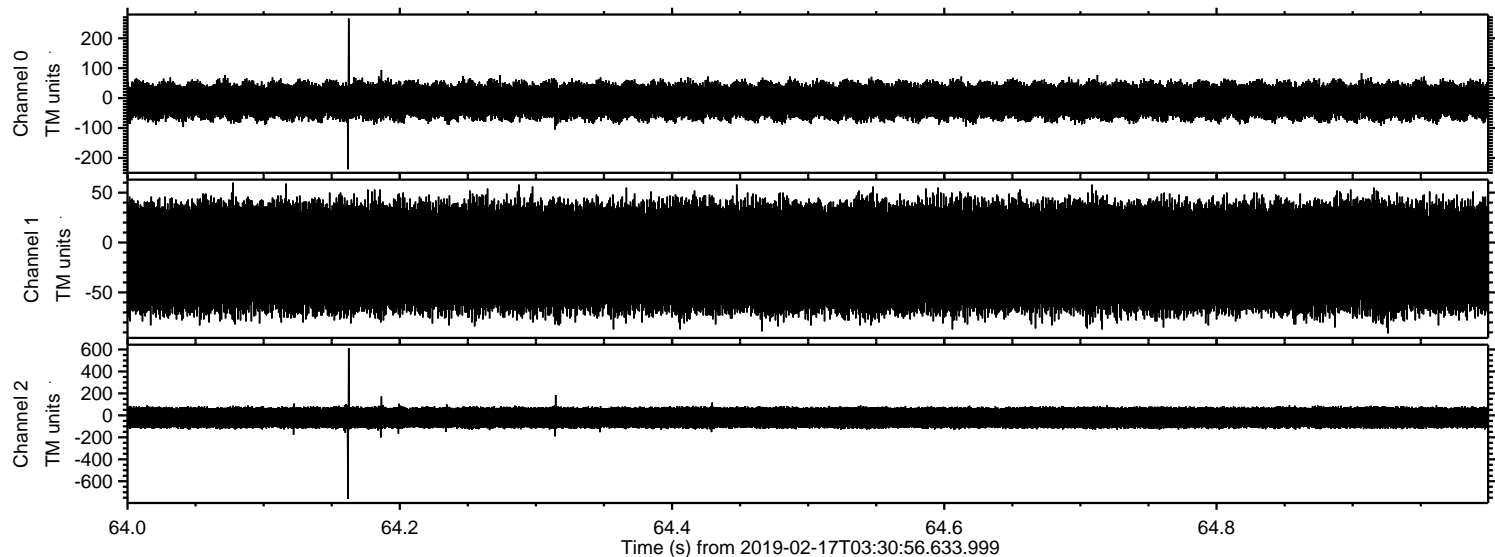
Processed Sun Feb 17 04:38:52 2019 by ELM ver.2012-10-06 from 001__elm20190217_033055__dat00.bin



Processed Sun Feb 17 04:38:53 2019 by ELM ver.2012-10-06 from 001__elm20190217_033055__dat00.bin

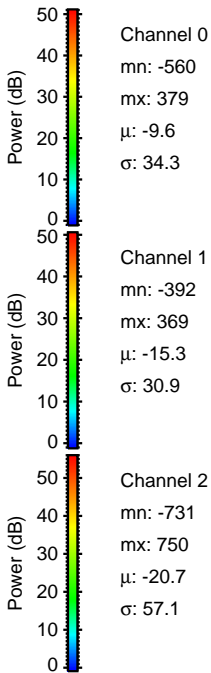
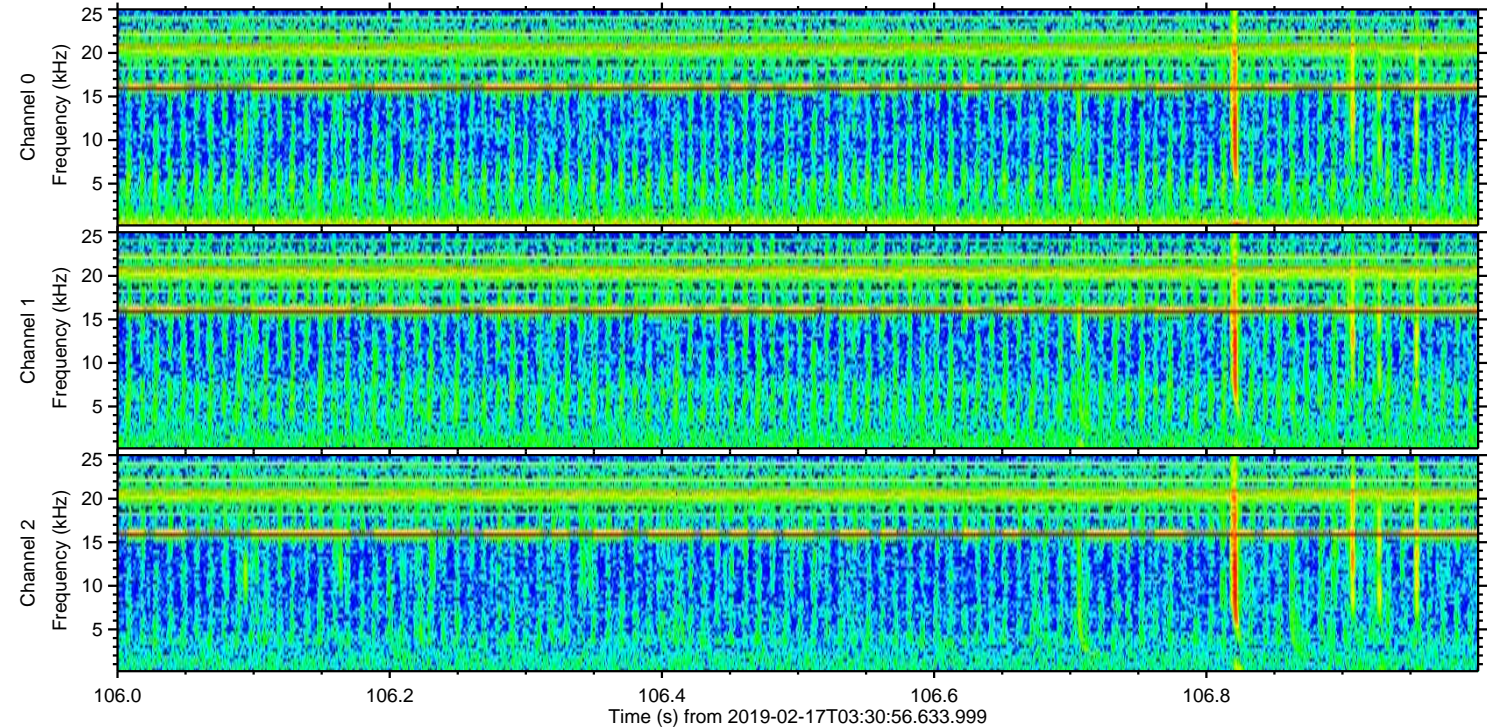
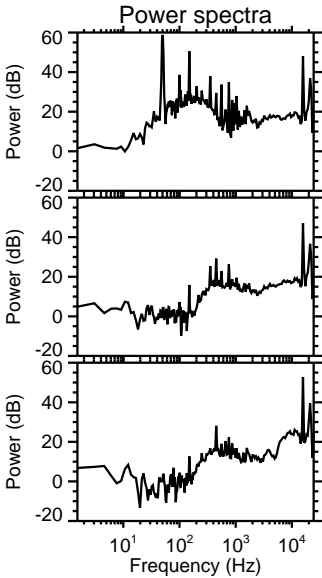
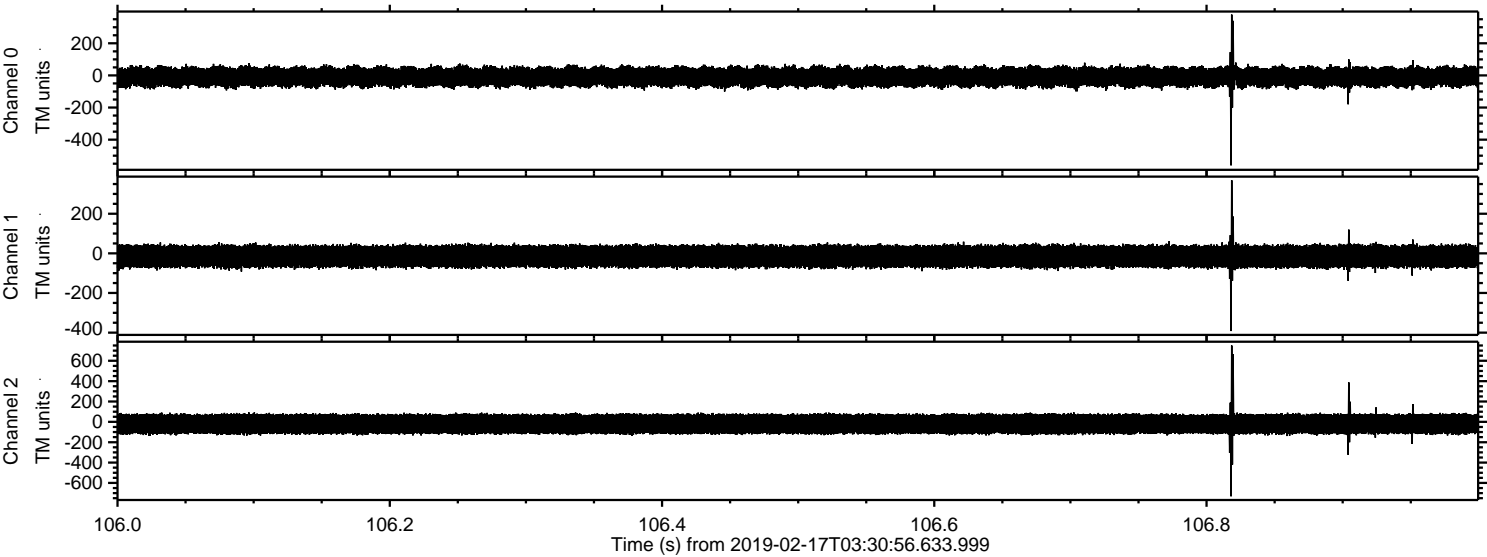


Processed Sun Feb 17 04:38:54 2019 by ELM ver.2012-10-06 from 001__elm20190217_033055__dat00.bin

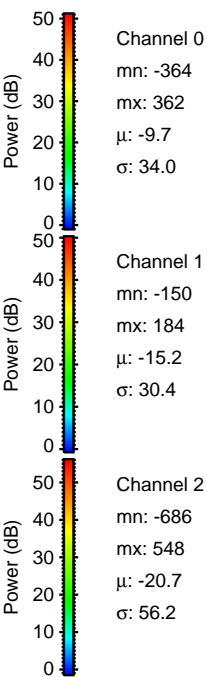
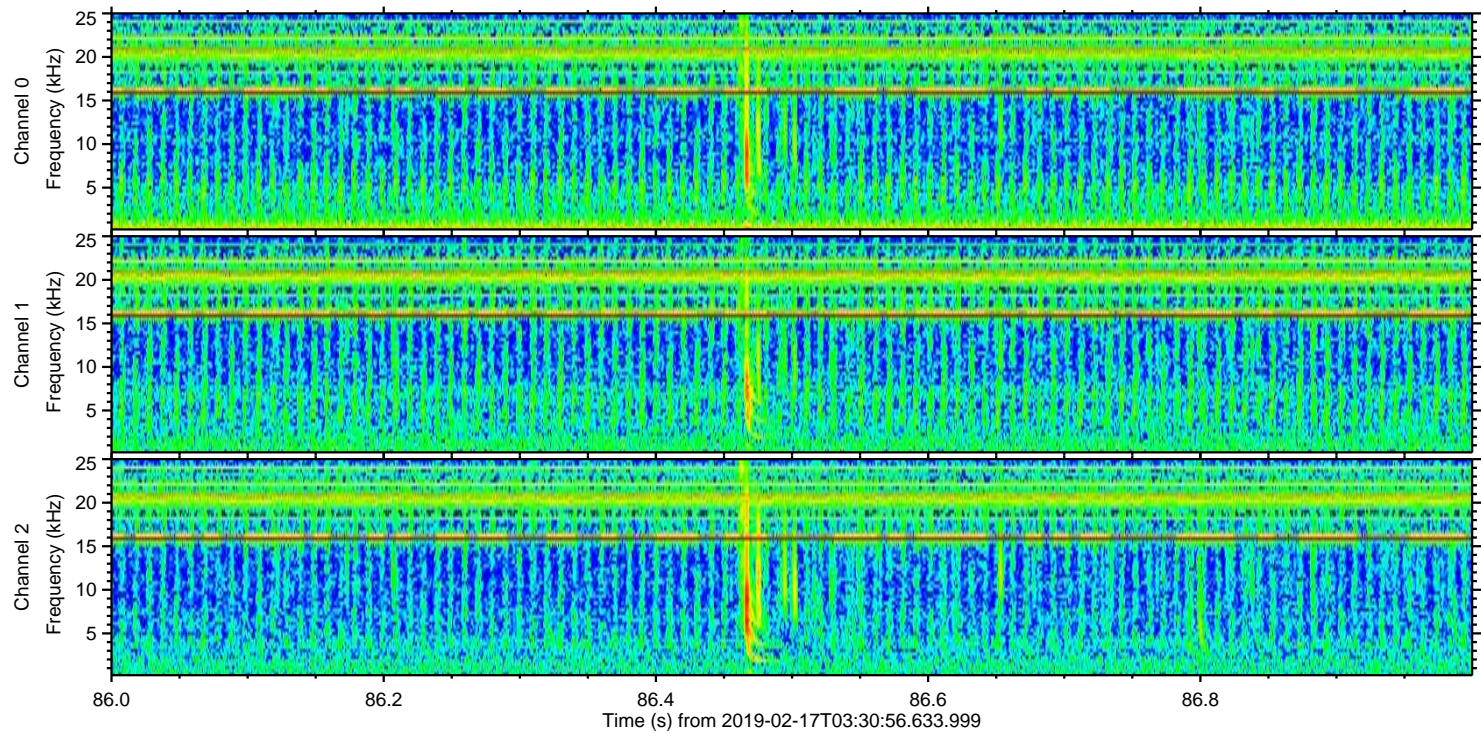
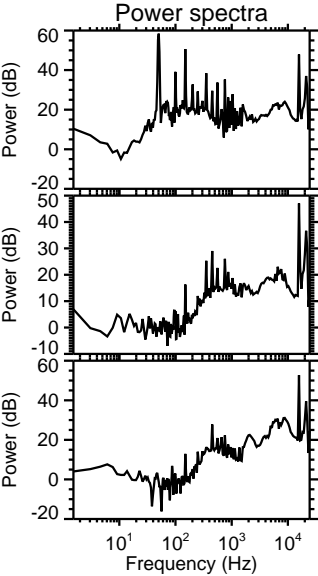
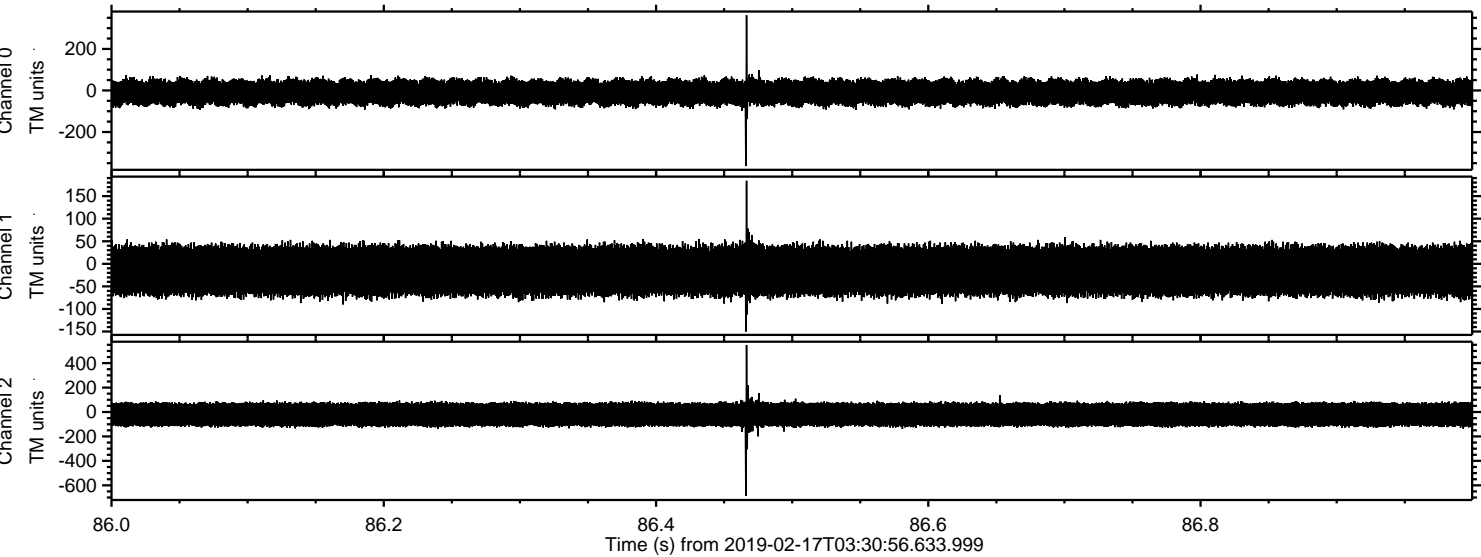


ELMAVAN 3D WAVEFORMS (Measured data sampled at 50 kHz) 51000 packets of 144 samples from 2019-02-17T03:30:56.633.999. Part 107/147

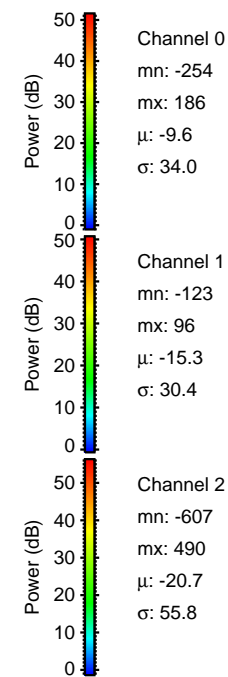
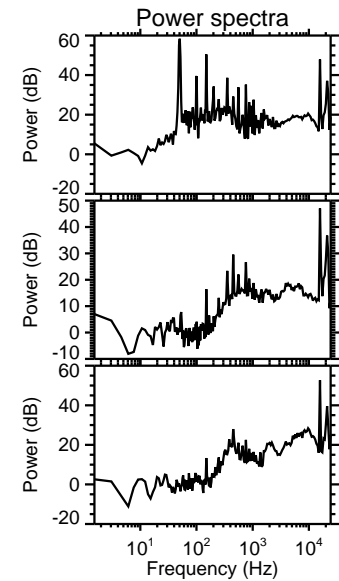
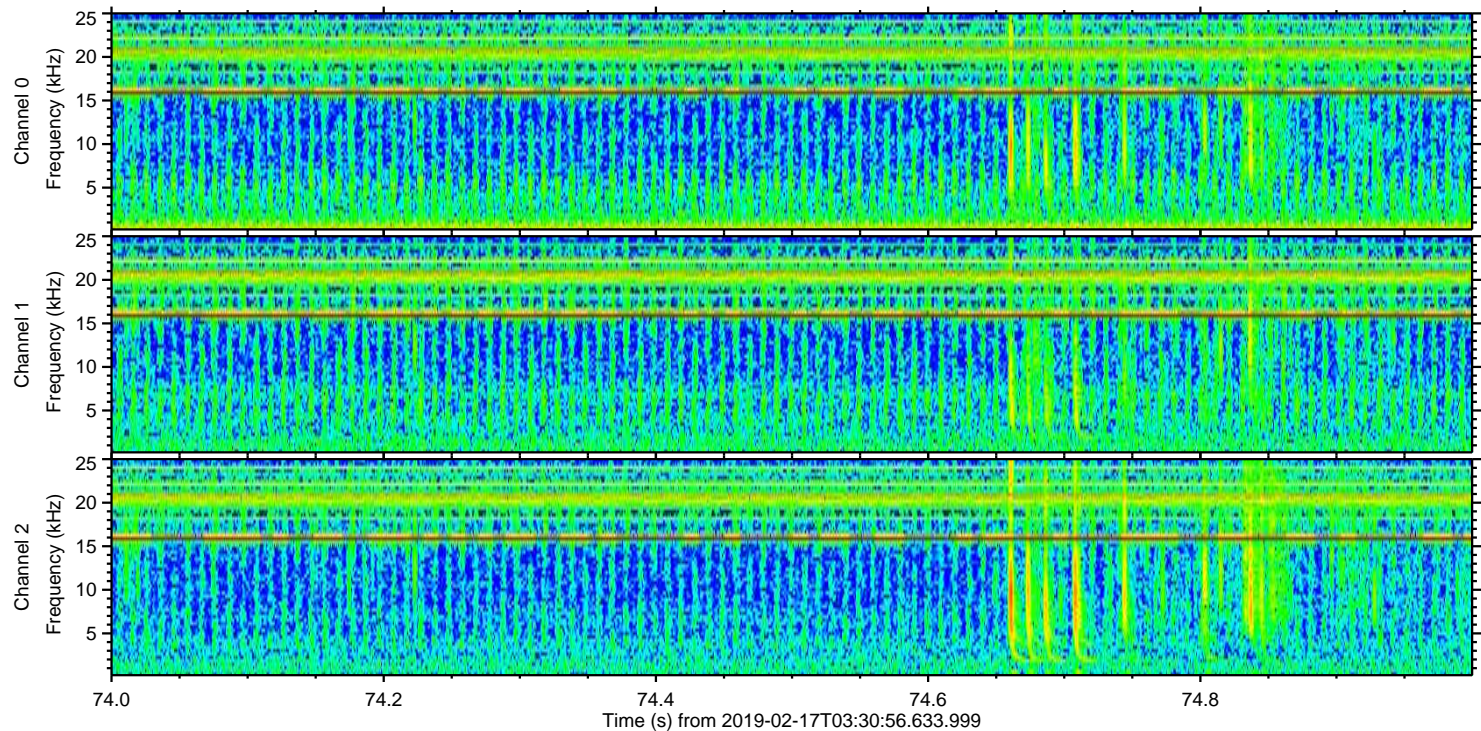
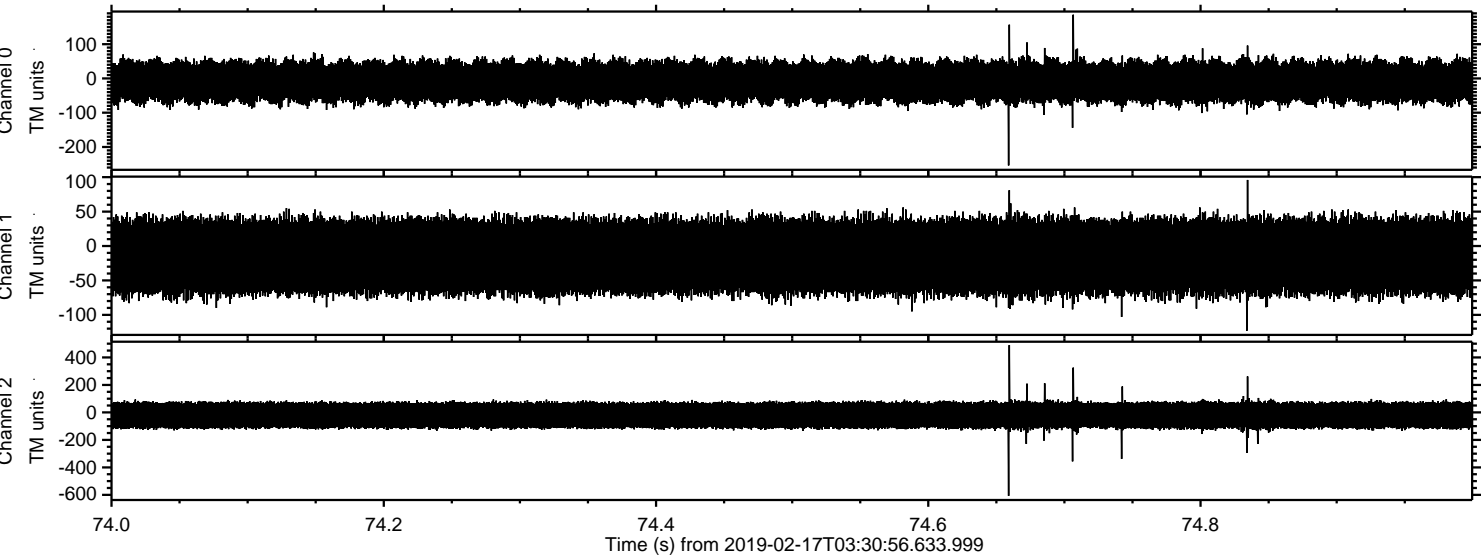
Processed Sun Feb 17 04:38:54 2019 by ELM ver.2012-10-06 from 001__elm20190217_033055__dat00.bin



Processed Sun Feb 17 04:38:55 2019 by ELM ver.2012-10-06 from 001__elm20190217_033055__dat00.bin



Processed Sun Feb 17 04:38:56 2019 by ELM ver.2012-10-06 from 001__elm20190217_033055__dat00.bin

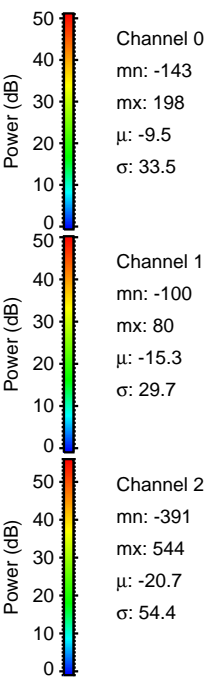
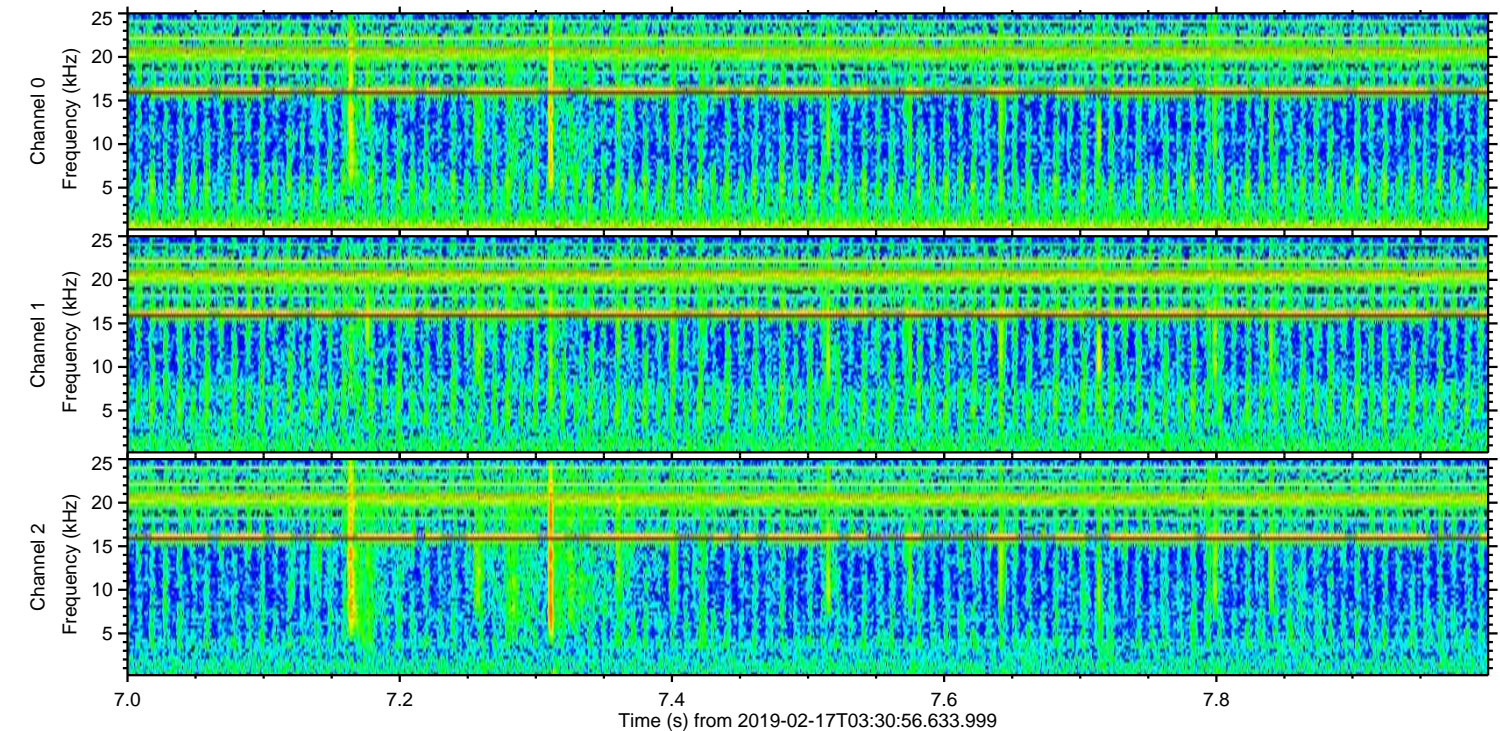
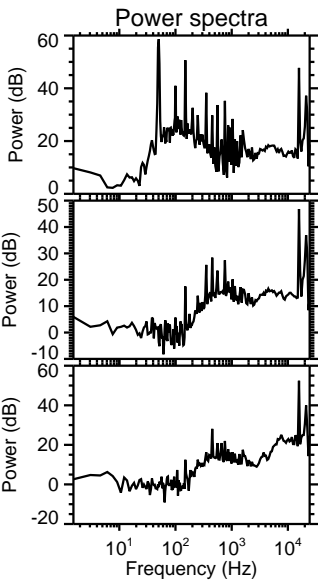
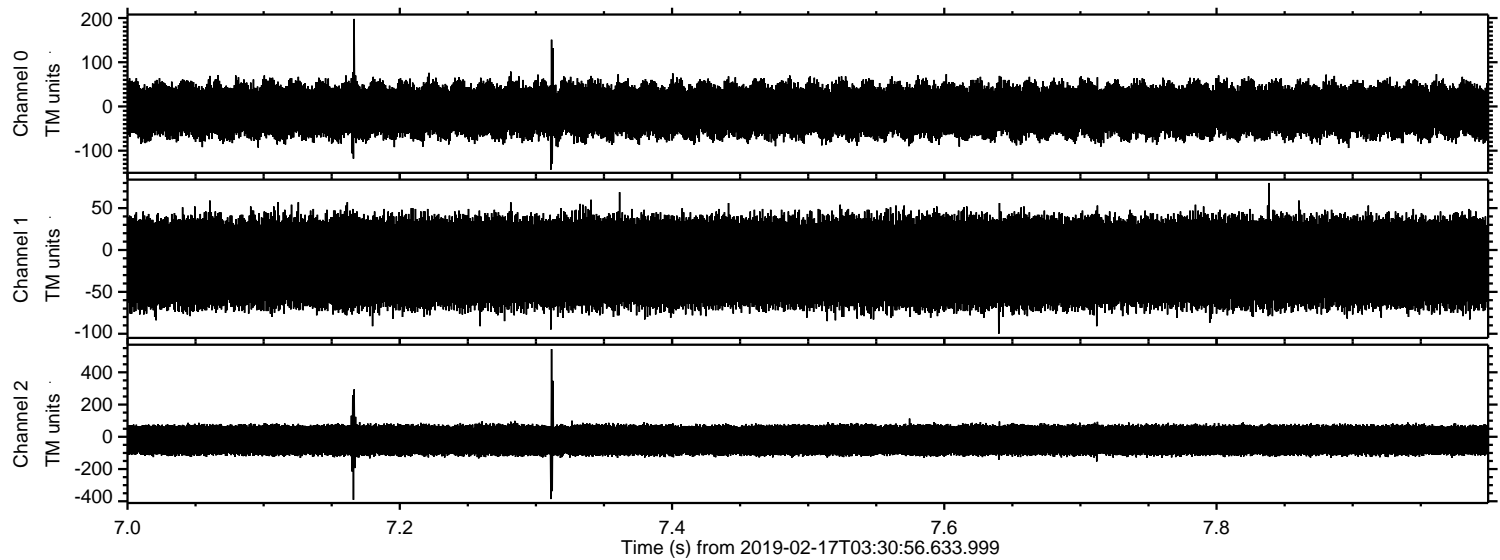


Channel 0
mn: -254
mx: 186
 μ : -9.6
 σ : 34.0

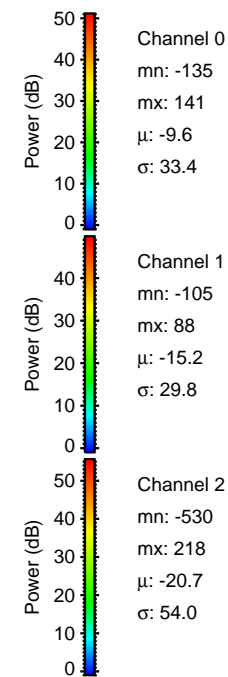
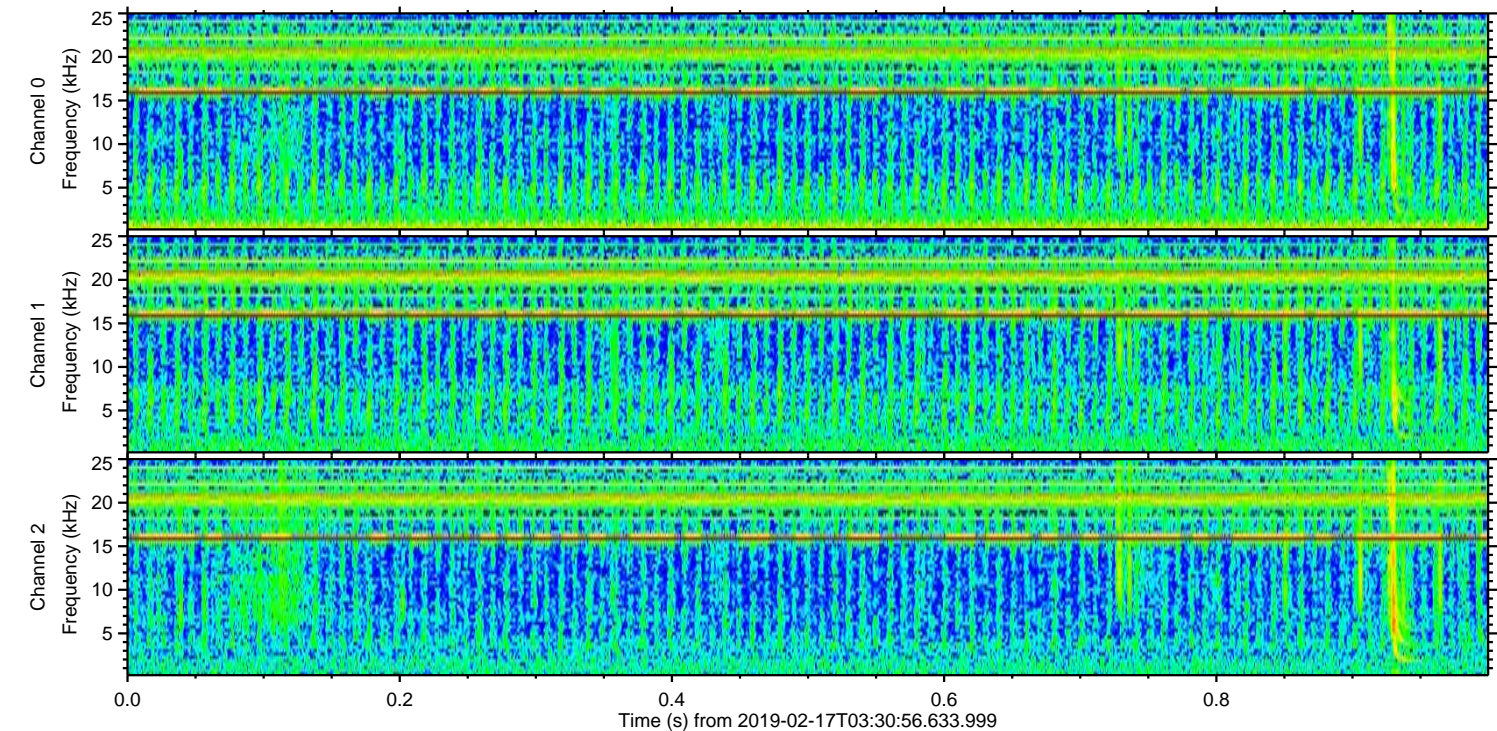
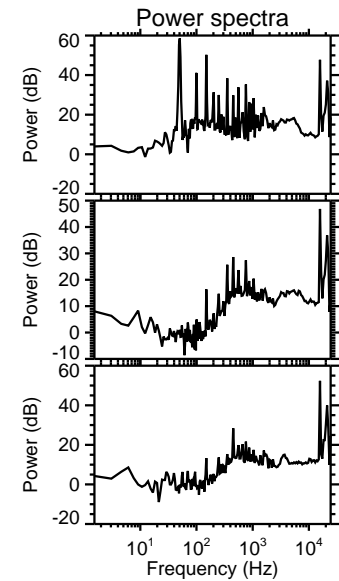
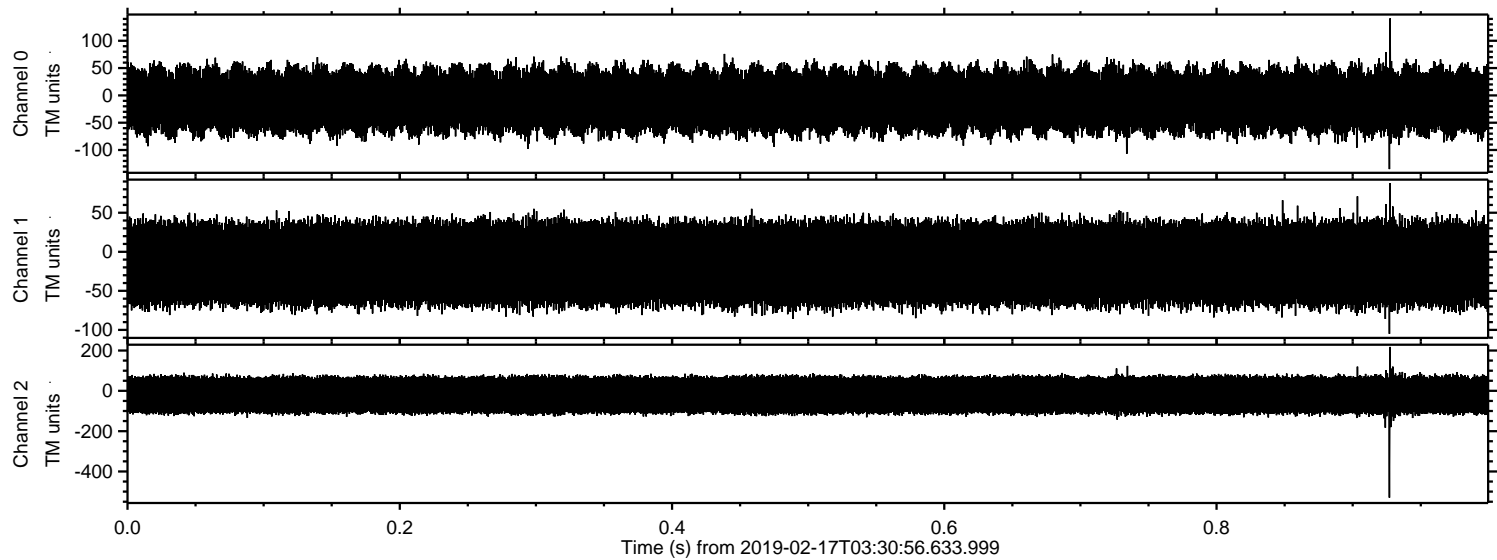
Channel 1
mn: -123
mx: 96
 μ : -15.3
 σ : 30.4

Channel 2
mn: -607
mx: 490
 μ : -20.7
 σ : 55.8

Processed Sun Feb 17 04:38:57 2019 by ELM ver.2012-10-06 from 001__elm20190217_033055__dat00.bin



Processed Sun Feb 17 04:38:57 2019 by ELM ver.2012-10-06 from 001__elm20190217_033055__dat00.bin



Processed Sun Feb 17 04:38:58 2019 by ELM ver.2012-10-06 from 001__elm20190217_033055__dat00.bin

