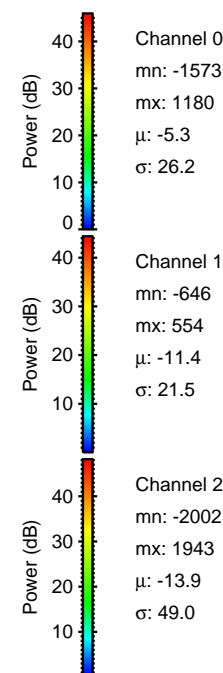
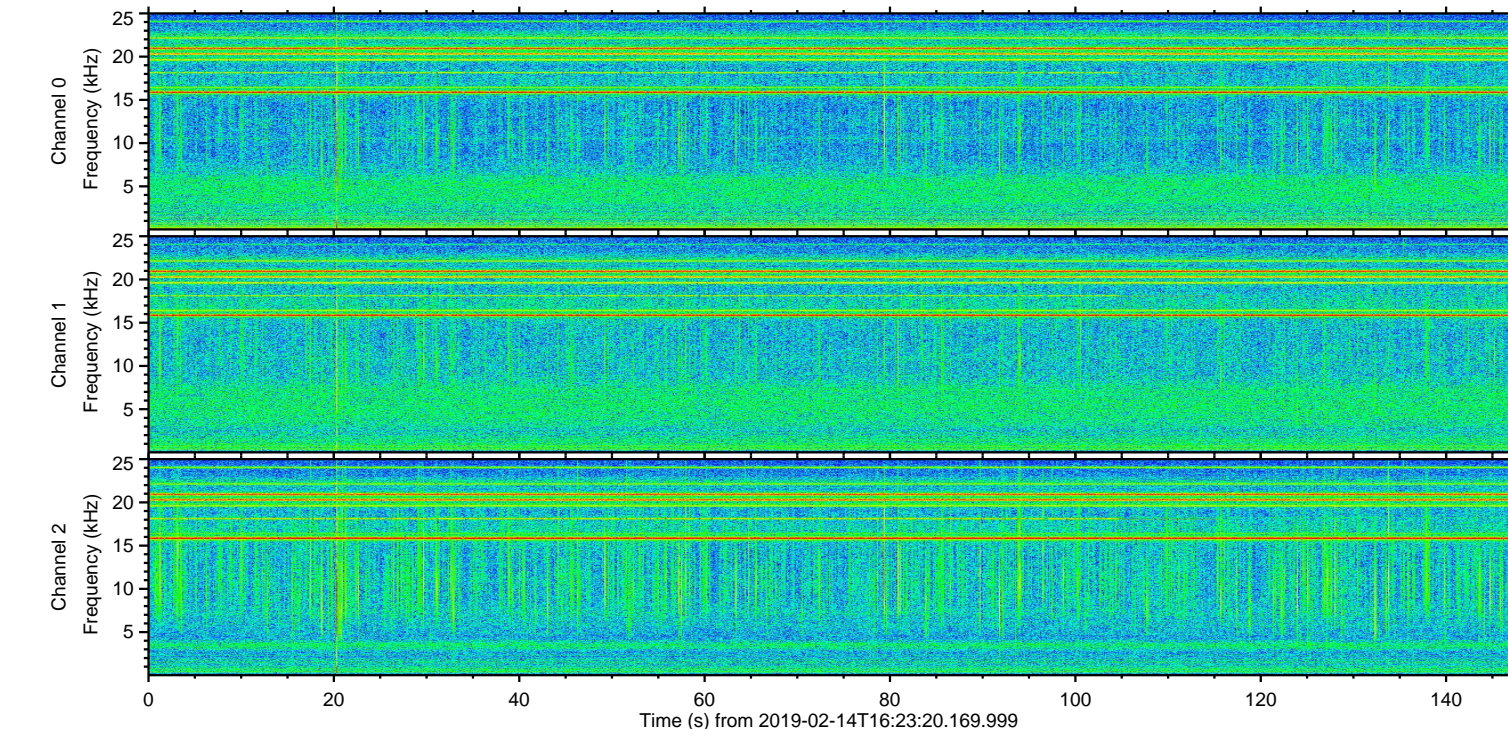
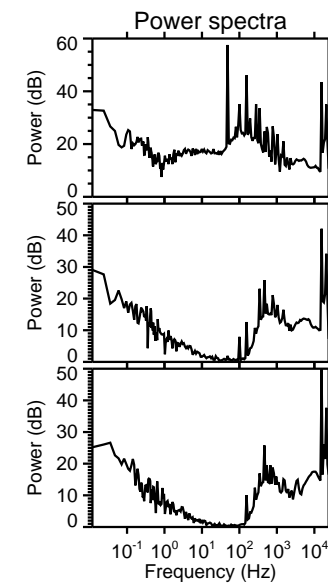
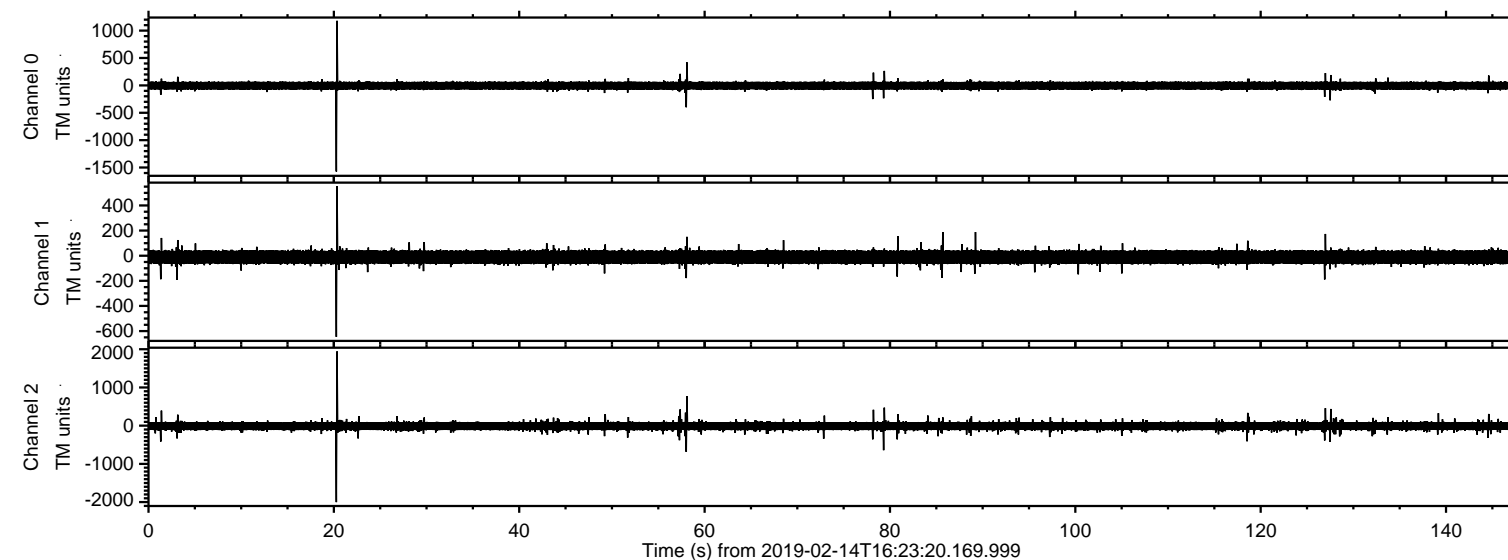


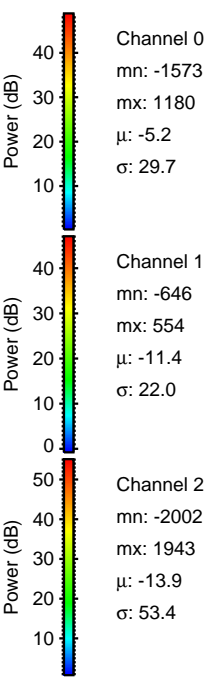
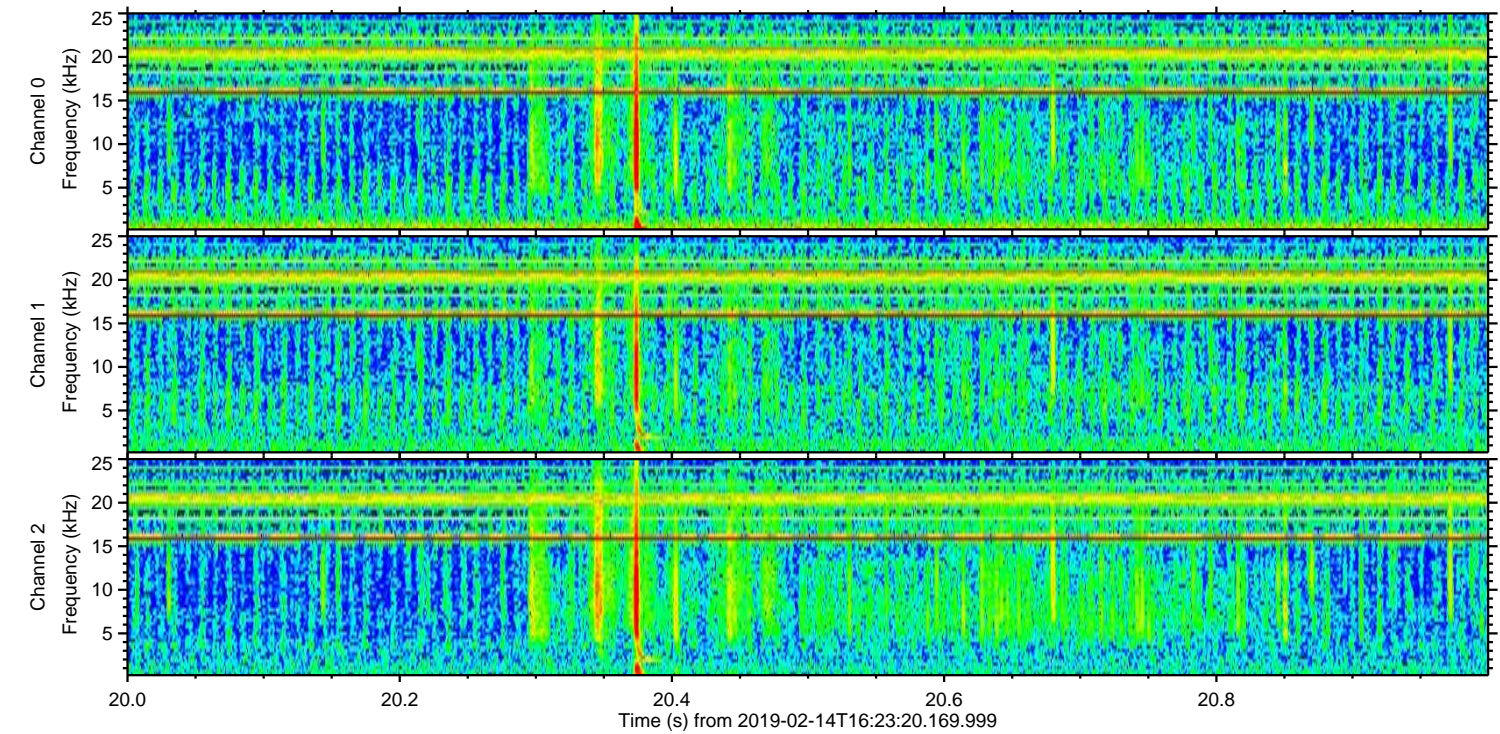
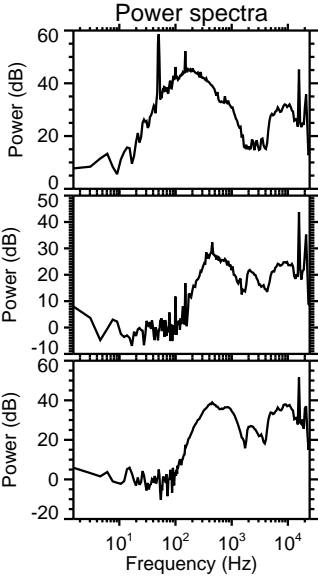
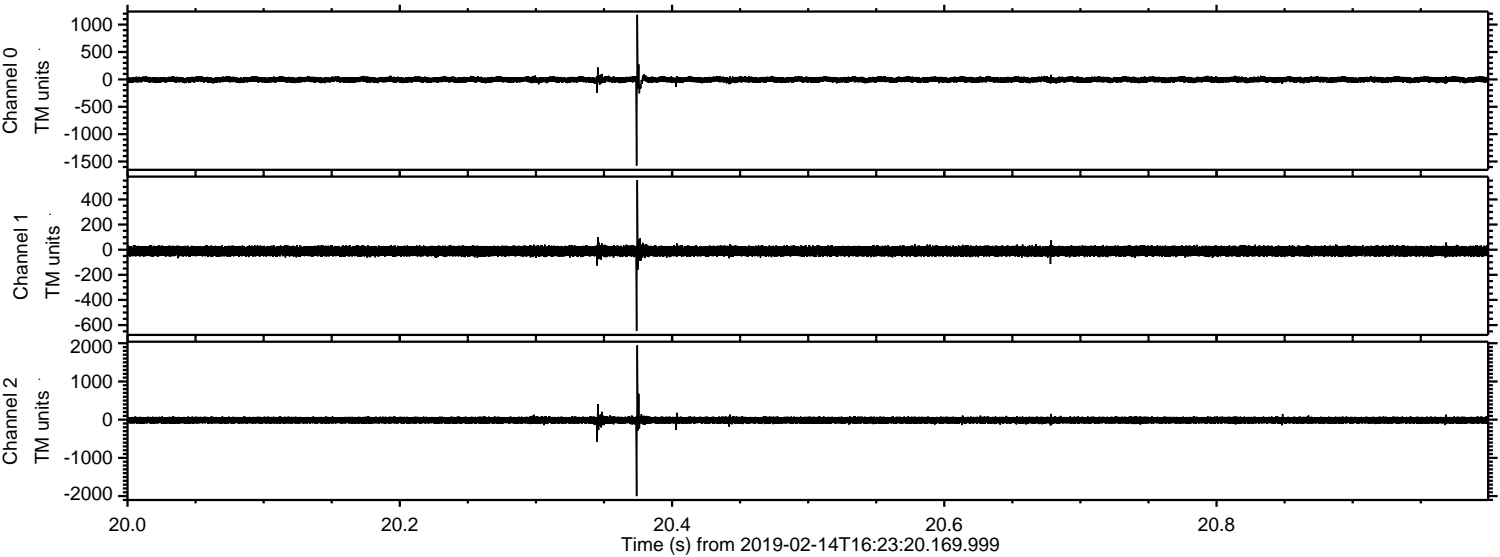
# ELMAVAN 3D WAVEFORMS (Measured data sampled at 50 kHz) 51000 packets of 144 samples from 2019-02-14T16:23:20.169.999.

Processed Thu Feb 14 17:31:16 2019 by ELM ver.2012-10-06 from 001\_\_elm20190214\_162319\_\_dat00.bin



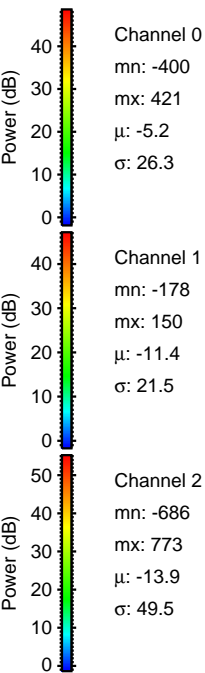
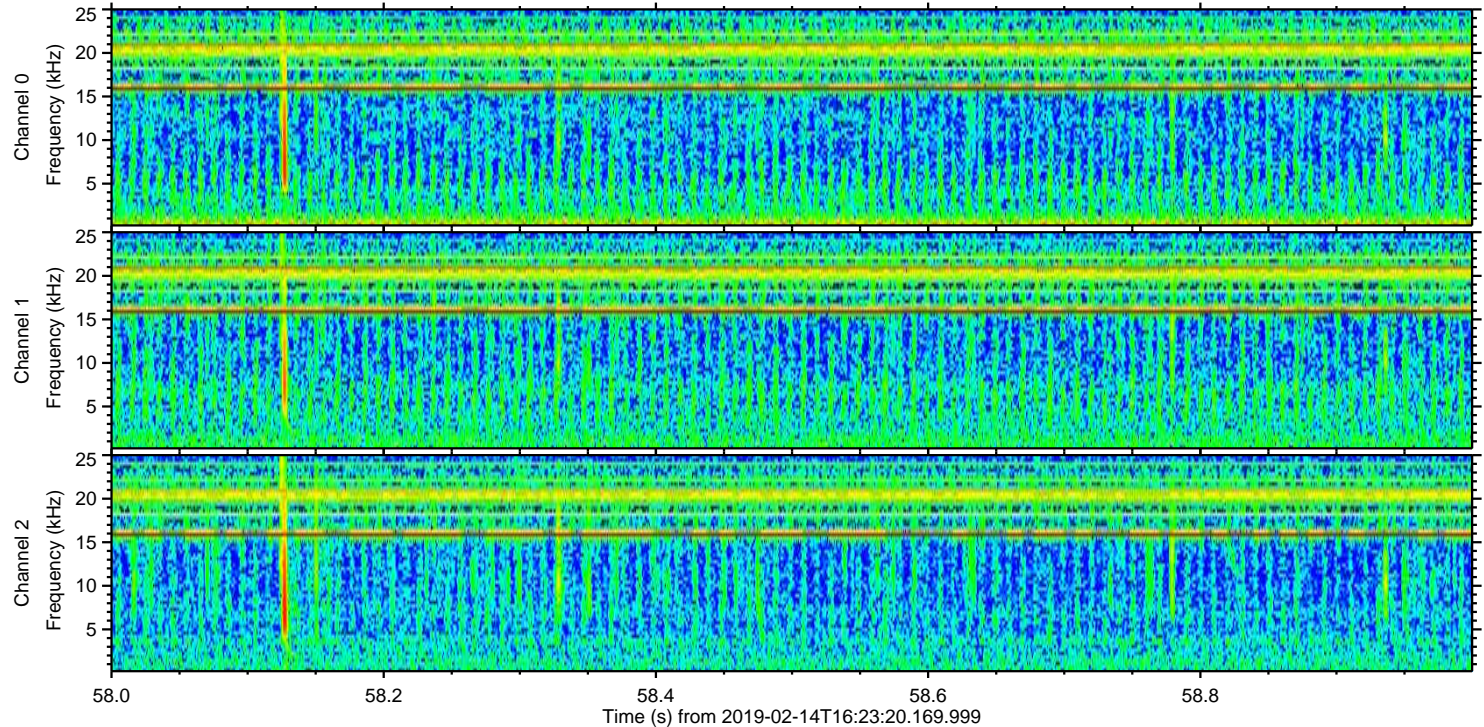
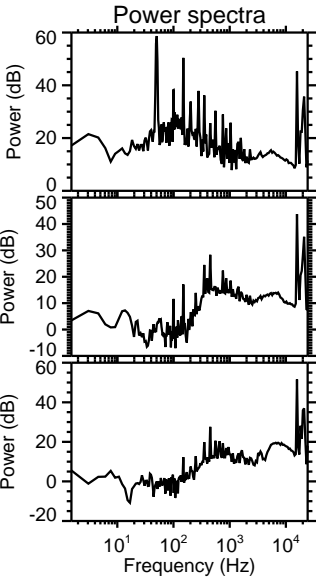
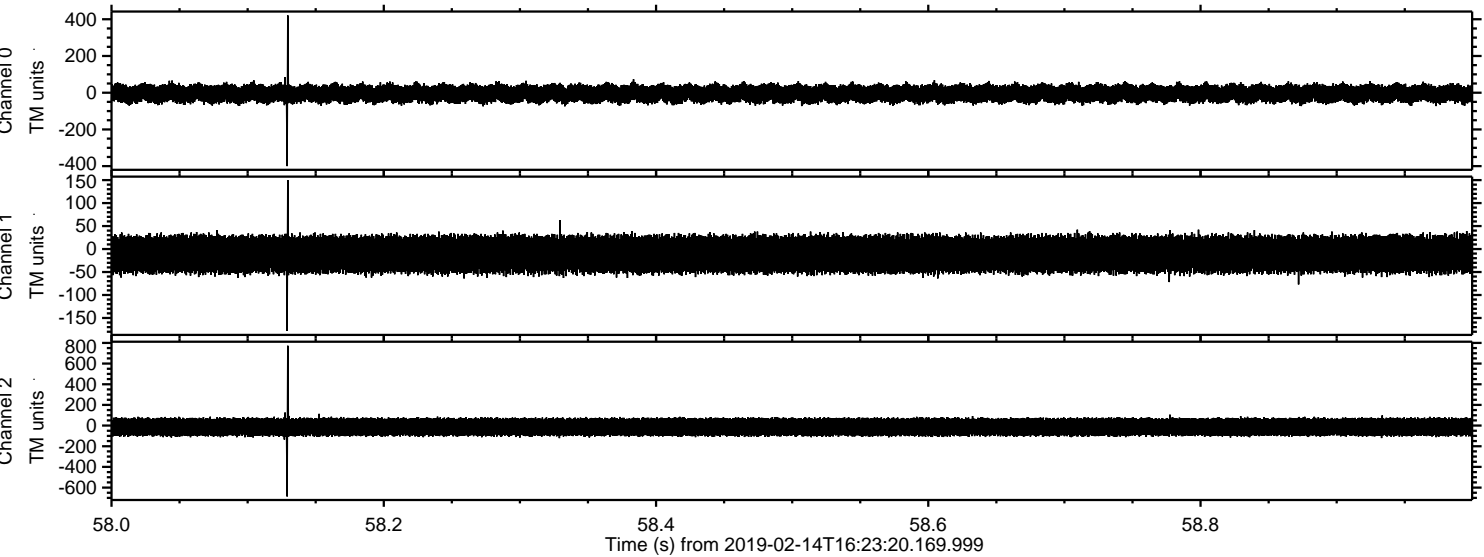


Processed Thu Feb 14 17:31:22 2019 by ELM ver.2012-10-06 from 001\_\_elm20190214\_162319\_\_dat00.bin



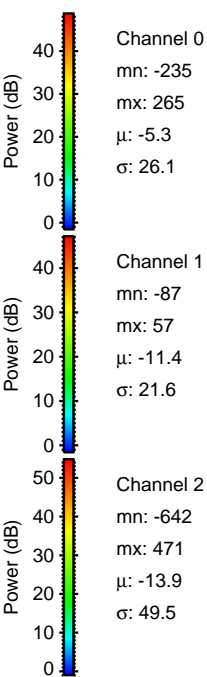
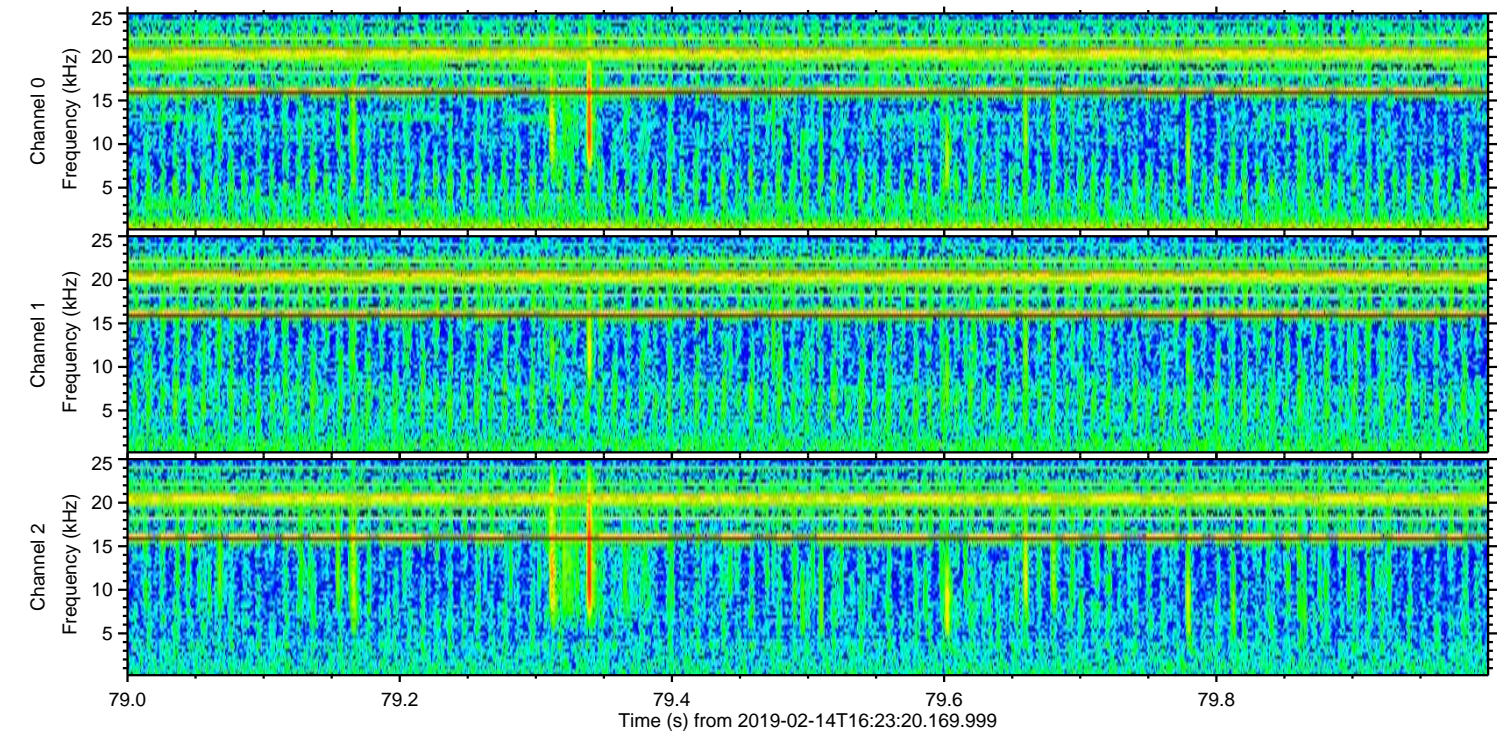
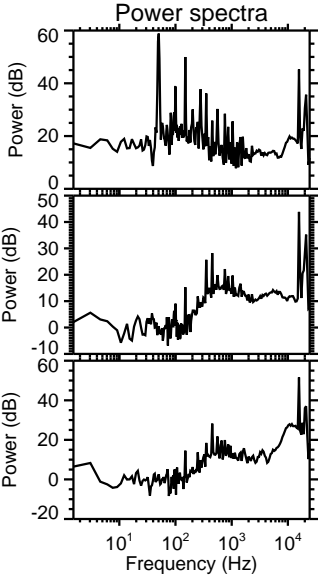
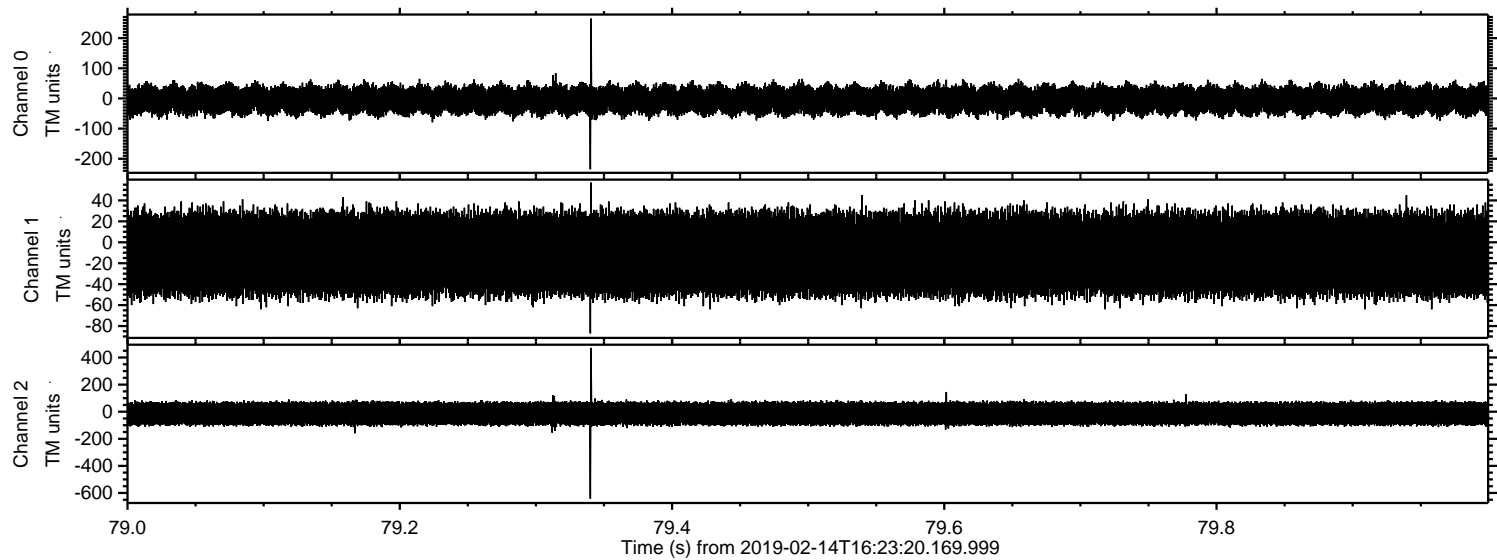


Processed Thu Feb 14 17:31:22 2019 by ELM ver.2012-10-06 from 001\_\_elm20190214\_162319\_\_dat00.bin



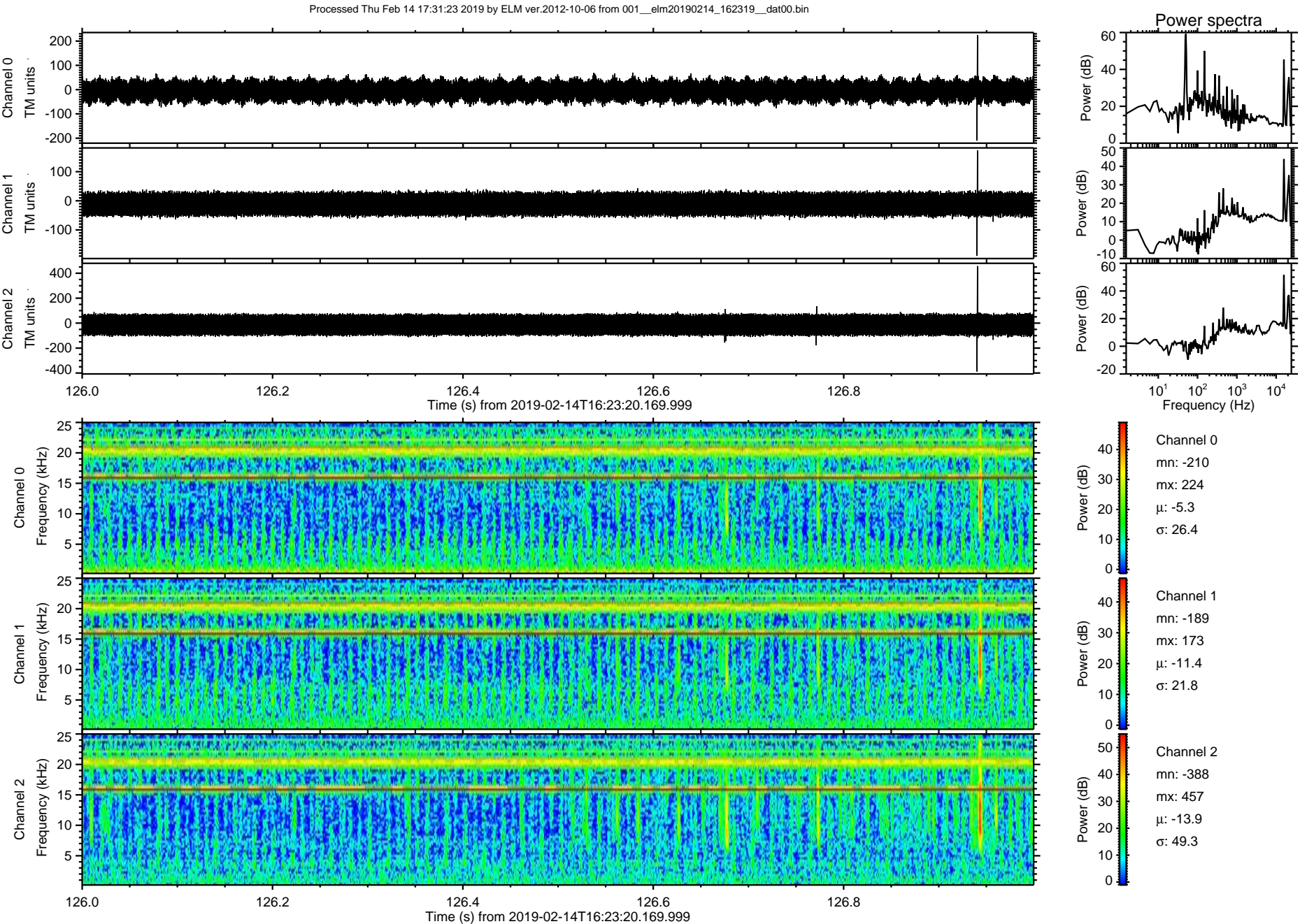


Processed Thu Feb 14 17:31:23 2019 by ELM ver.2012-10-06 from 001\_\_elm20190214\_162319\_\_dat00.bin



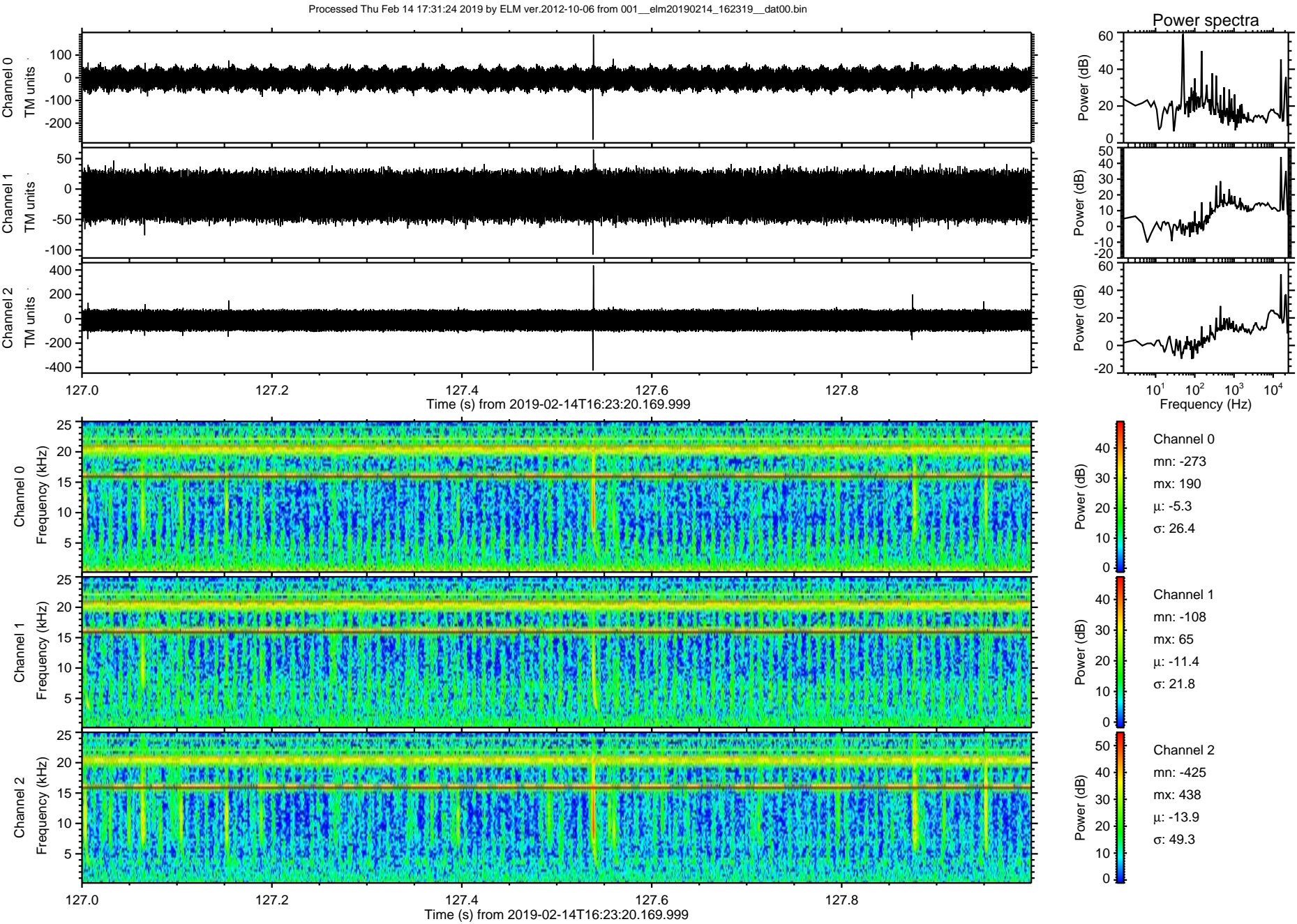


ELMAVAN 3D WAVEFORMS (Measured data sampled at 50 kHz) 51000 packets of 144 samples from 2019-02-14T16:23:20.169.999. Part 127/147



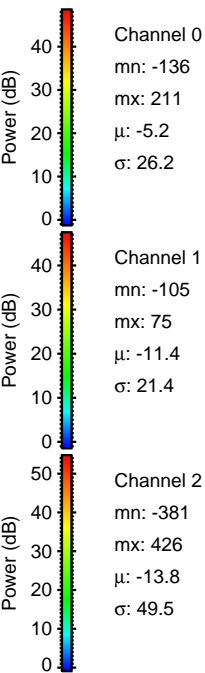
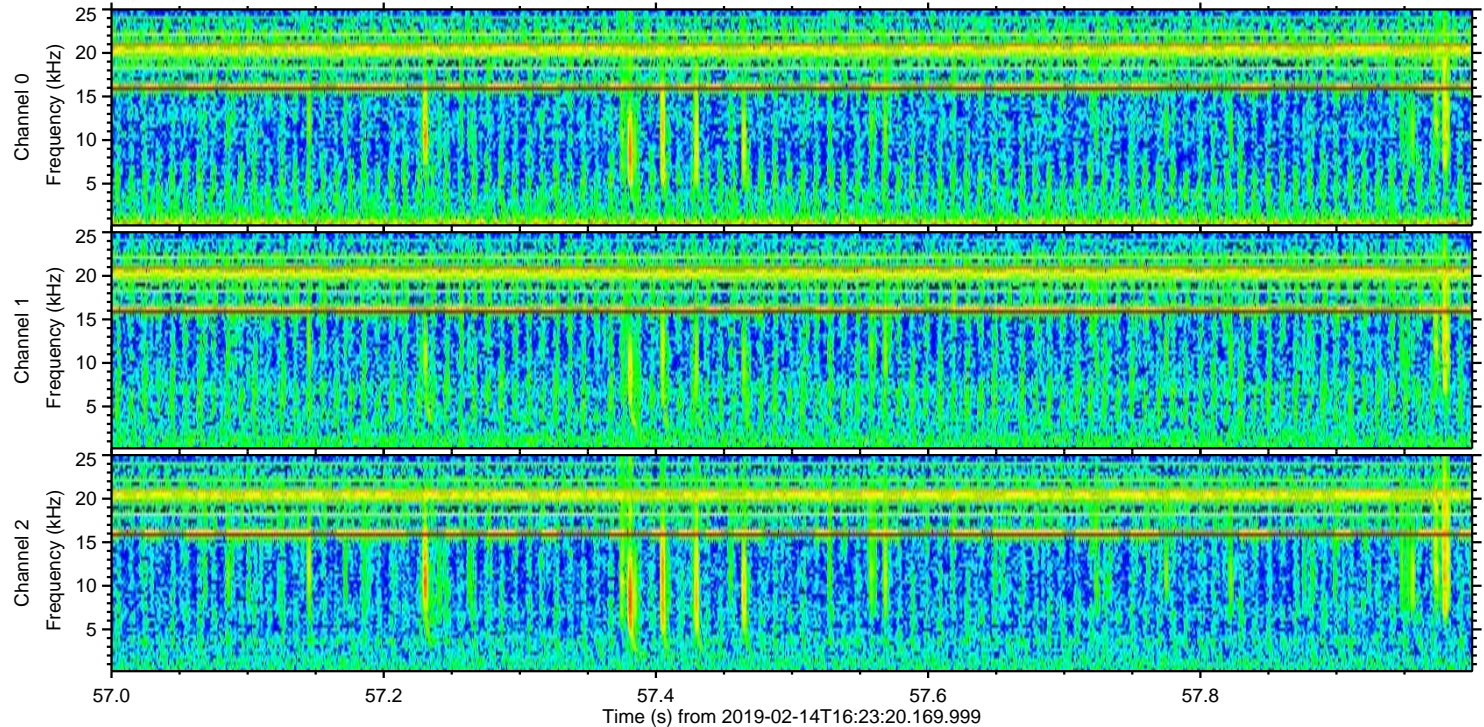
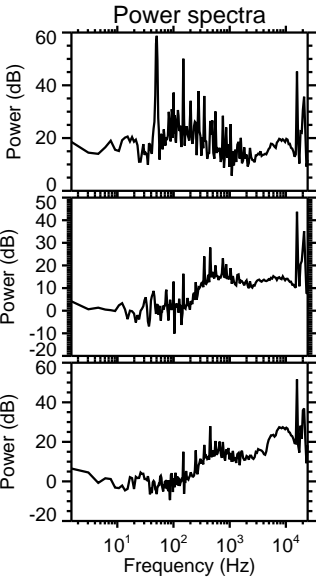
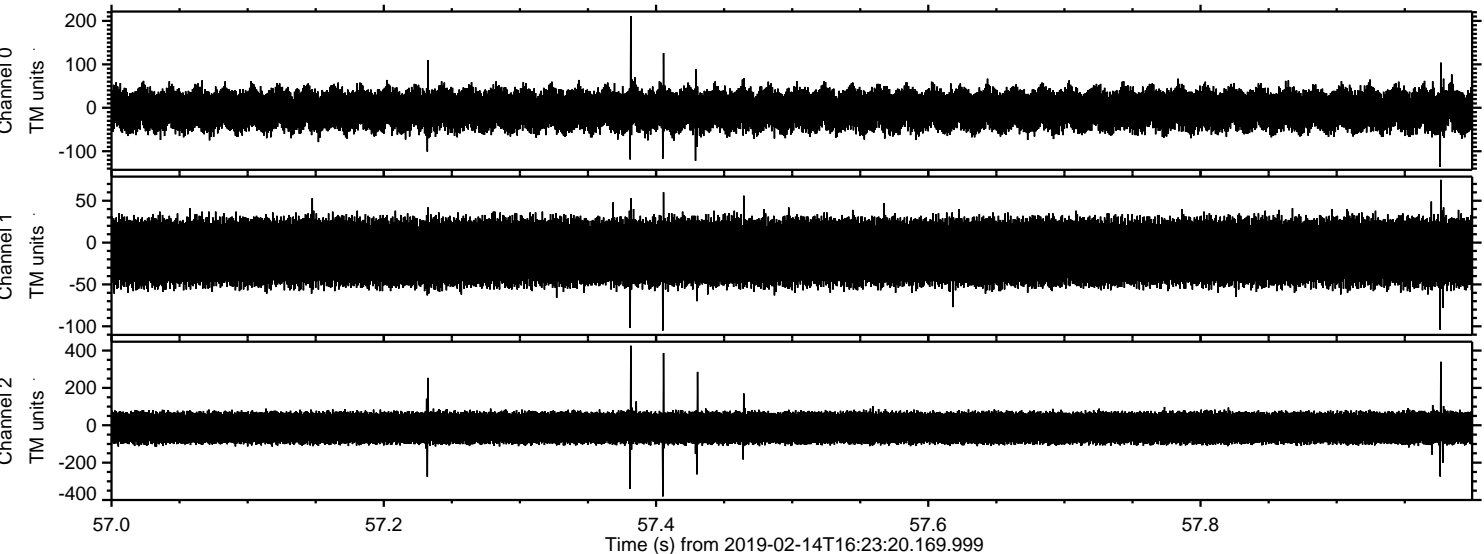


ELMAVAN 3D WAVEFORMS (Measured data sampled at 50 kHz) 51000 packets of 144 samples from 2019-02-14T16:23:20.169.999. Part 128/147



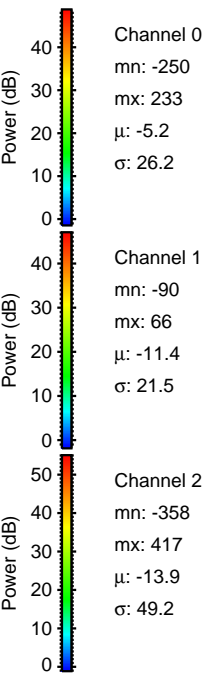
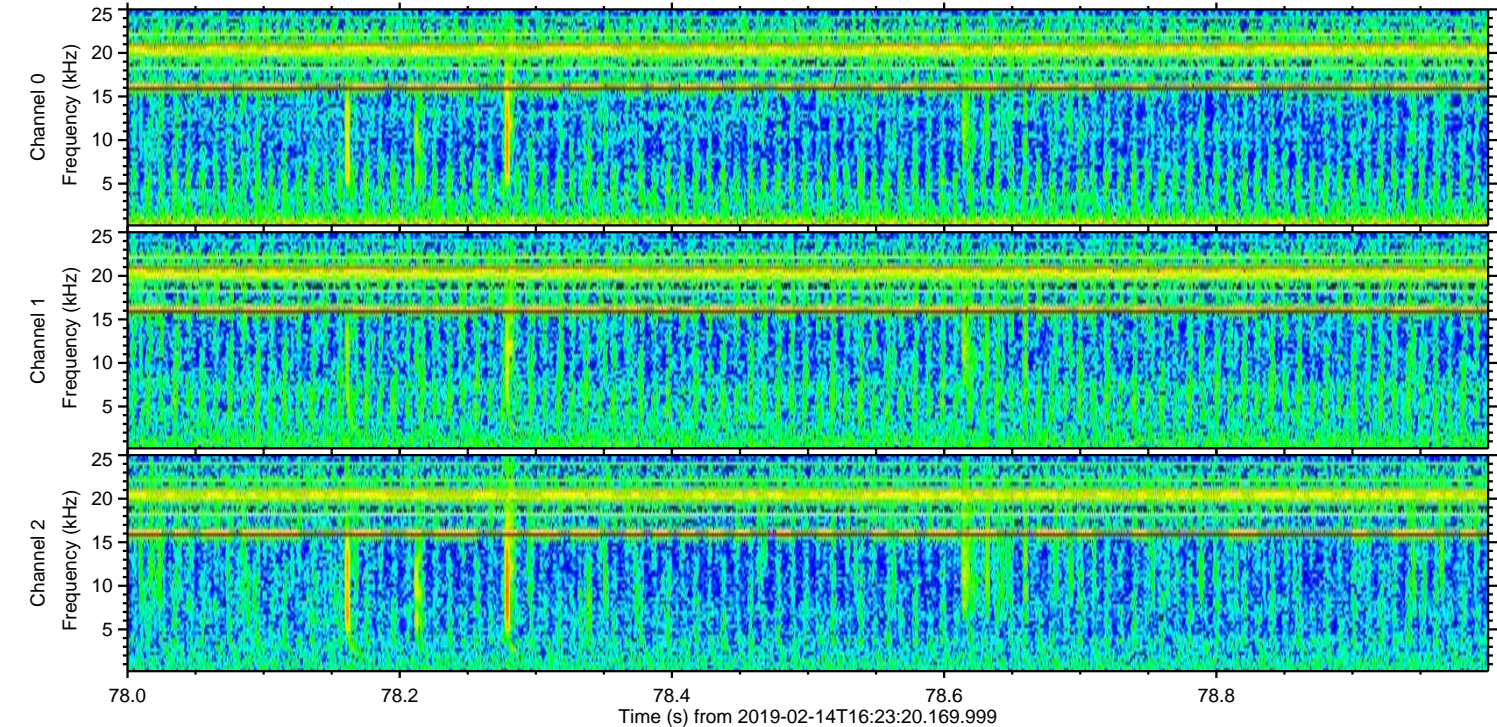
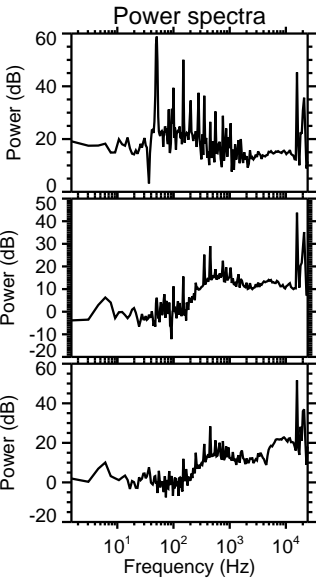
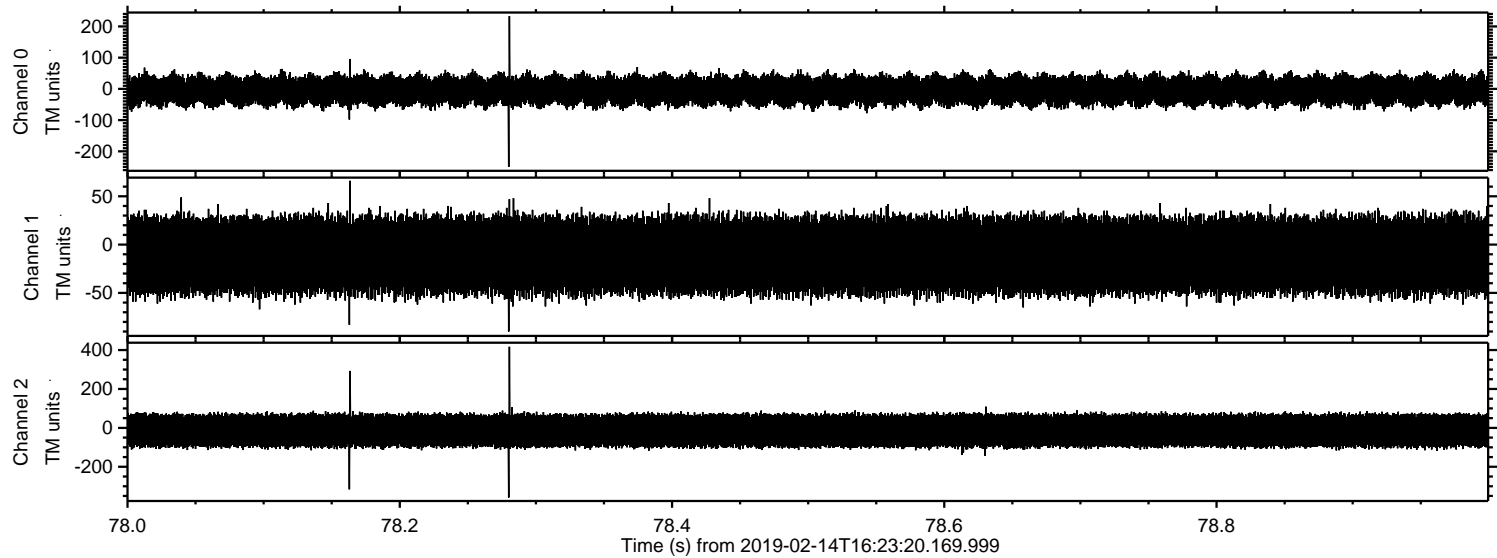


Processed Thu Feb 14 17:31:25 2019 by ELM ver.2012-10-06 from 001\_\_elm20190214\_162319\_\_dat00.bin





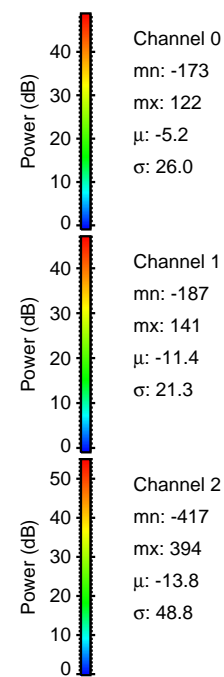
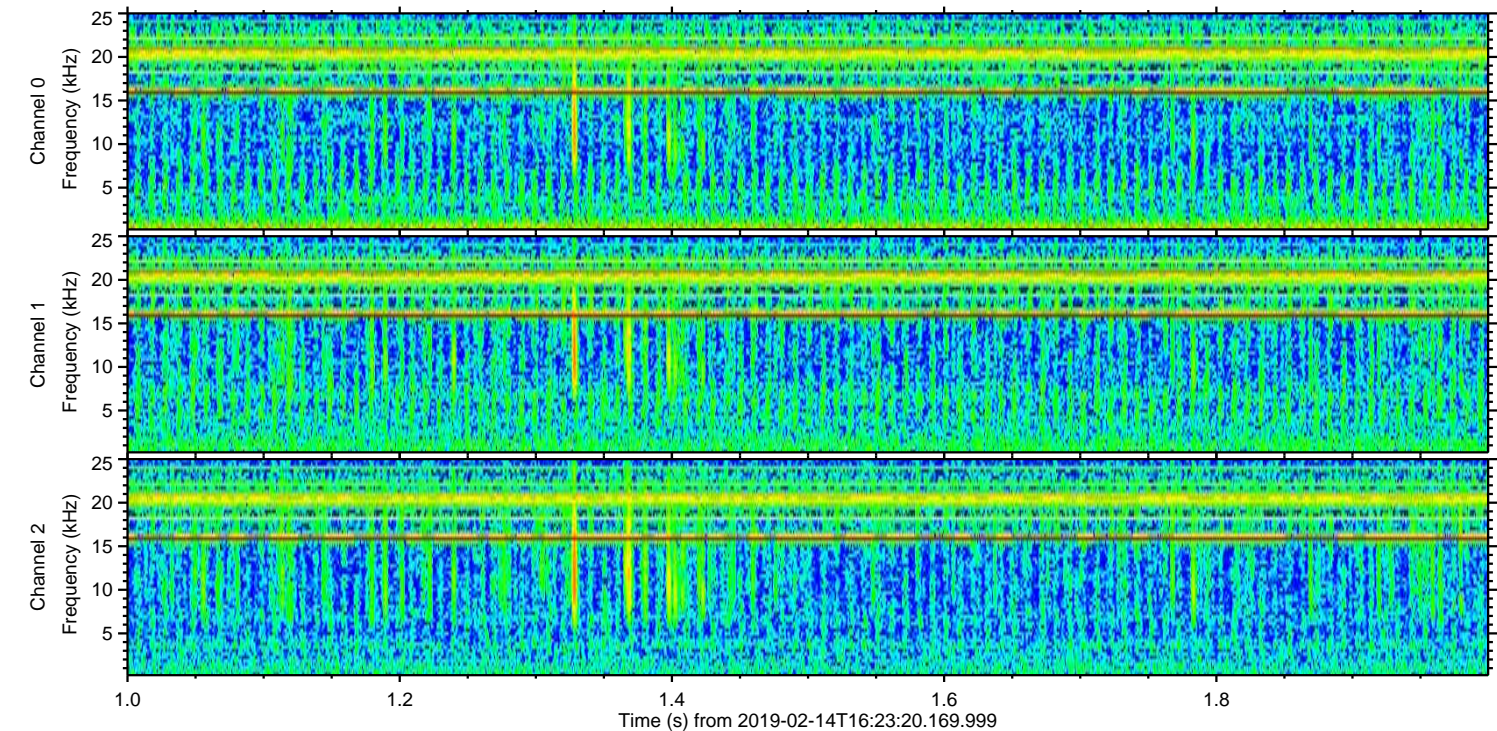
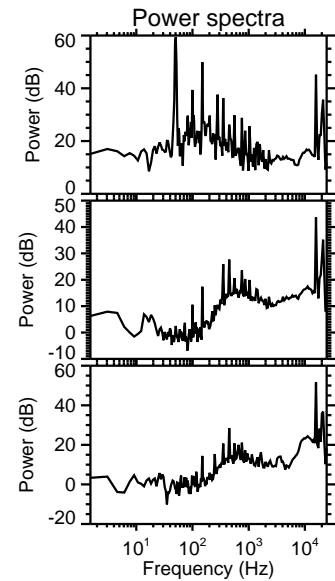
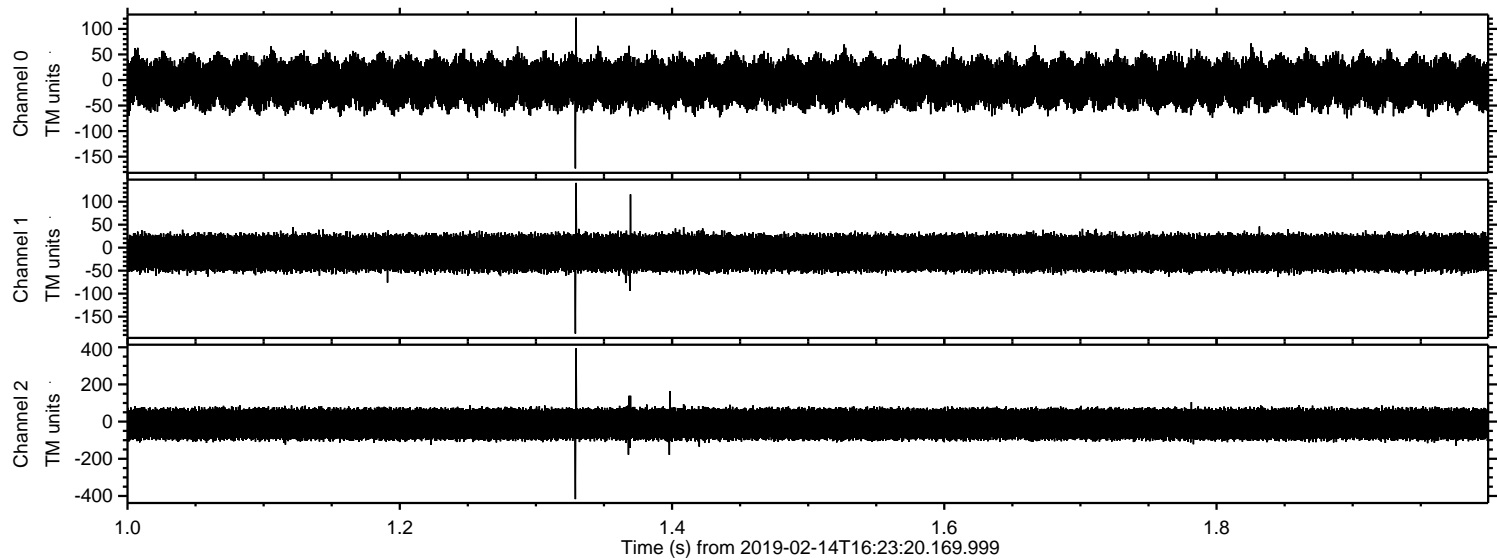
Processed Thu Feb 14 17:31:25 2019 by ELM ver.2012-10-06 from 001\_\_elm20190214\_162319\_\_dat00.bin





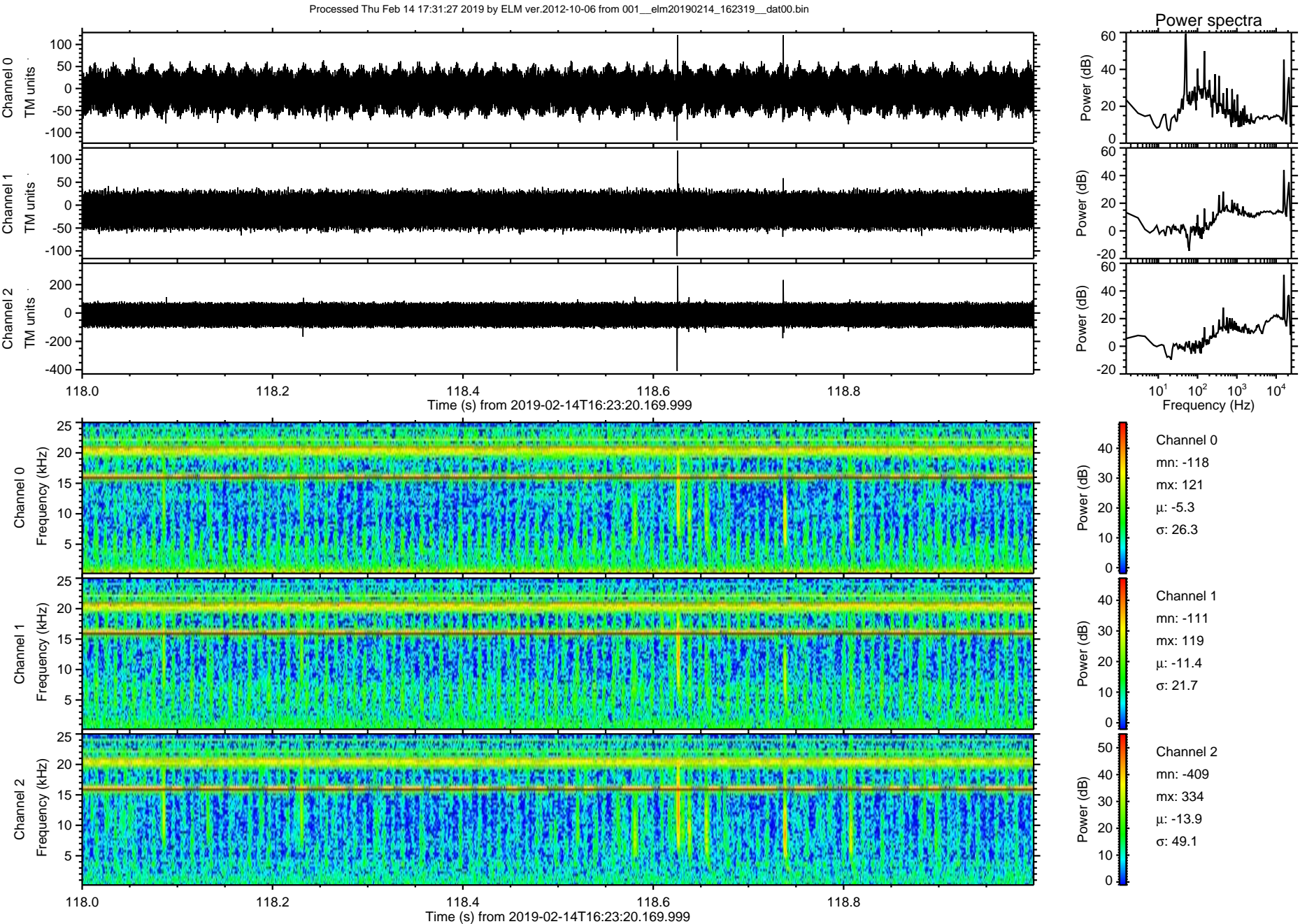
ELMAVAN 3D WAVEFORMS (Measured data sampled at 50 kHz) 51000 packets of 144 samples from 2019-02-14T16:23:20.169.999. Part 2/147

Processed Thu Feb 14 17:31:26 2019 by ELM ver.2012-10-06 from 001\_\_elm20190214\_162319\_\_dat00.bin





ELMAVAN 3D WAVEFORMS (Measured data sampled at 50 kHz) 51000 packets of 144 samples from 2019-02-14T16:23:20.169.999. Part 119/147





Processed Thu Feb 14 17:31:27 2019 by ELM ver.2012-10-06 from 001\_\_elm20190214\_162319\_\_dat00.bin

