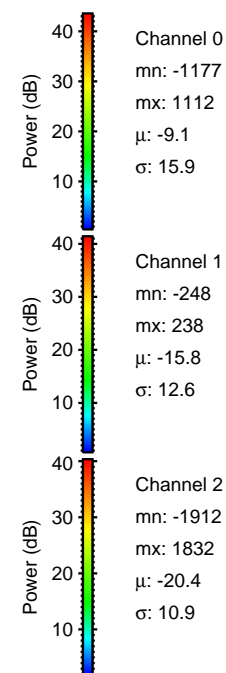
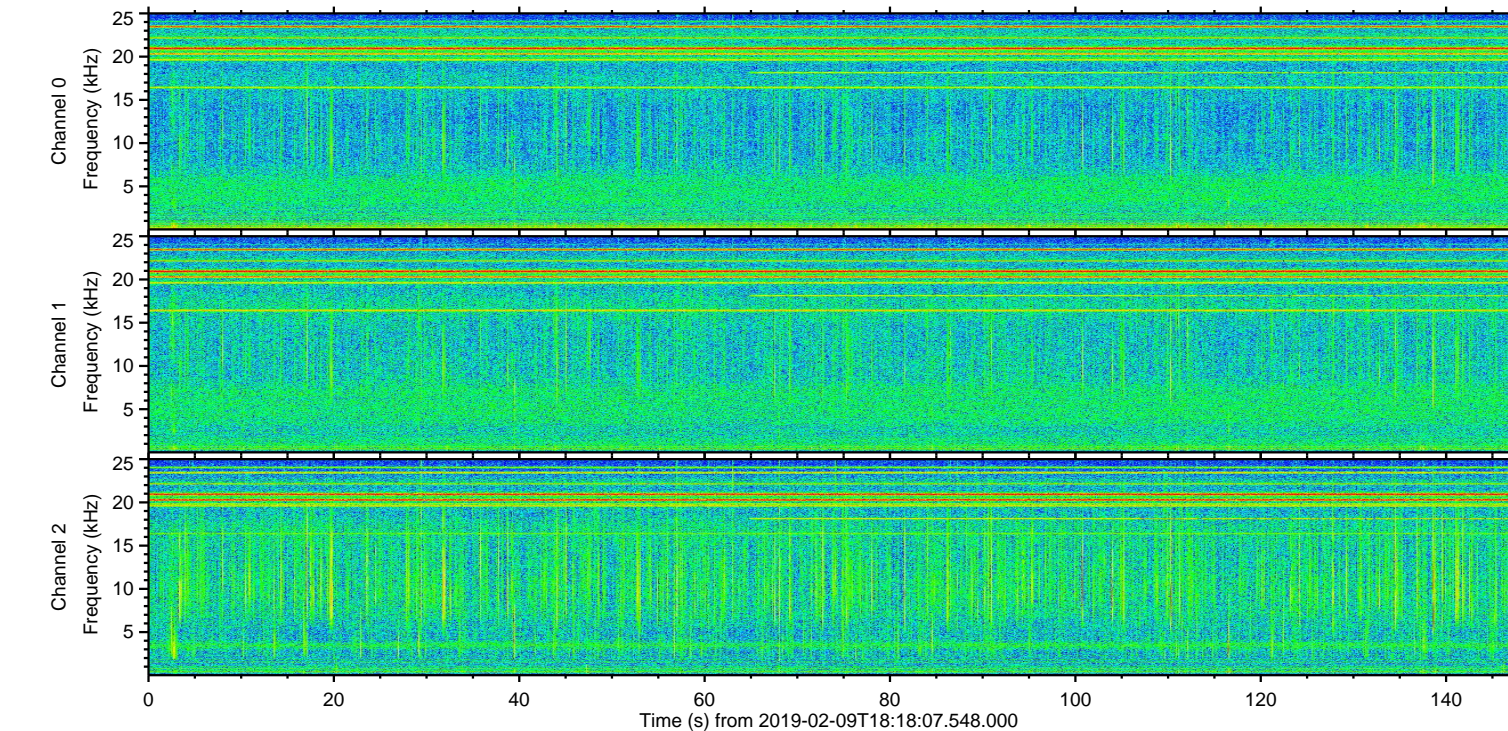
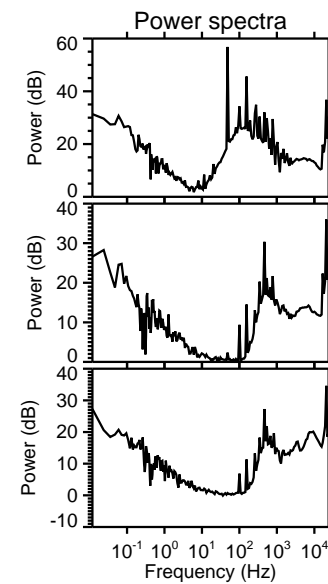
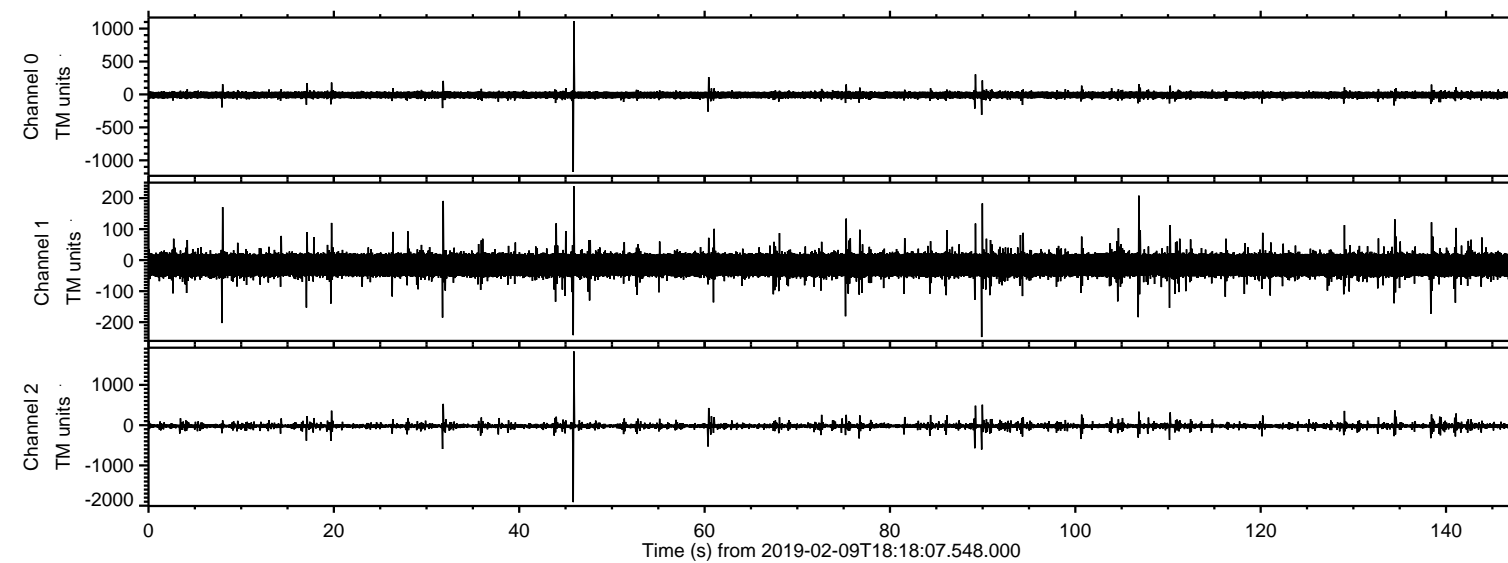


# ELMAVAN 3D WAVEFORMS (Measured data sampled at 50 kHz) 51000 packets of 144 samples from 2019-02-09T18:18:07.548.000.

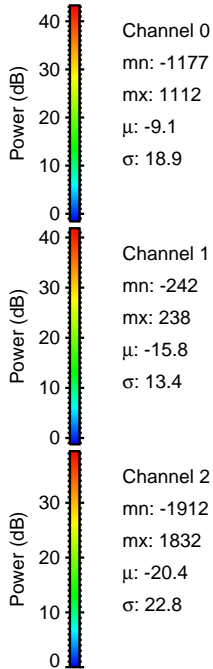
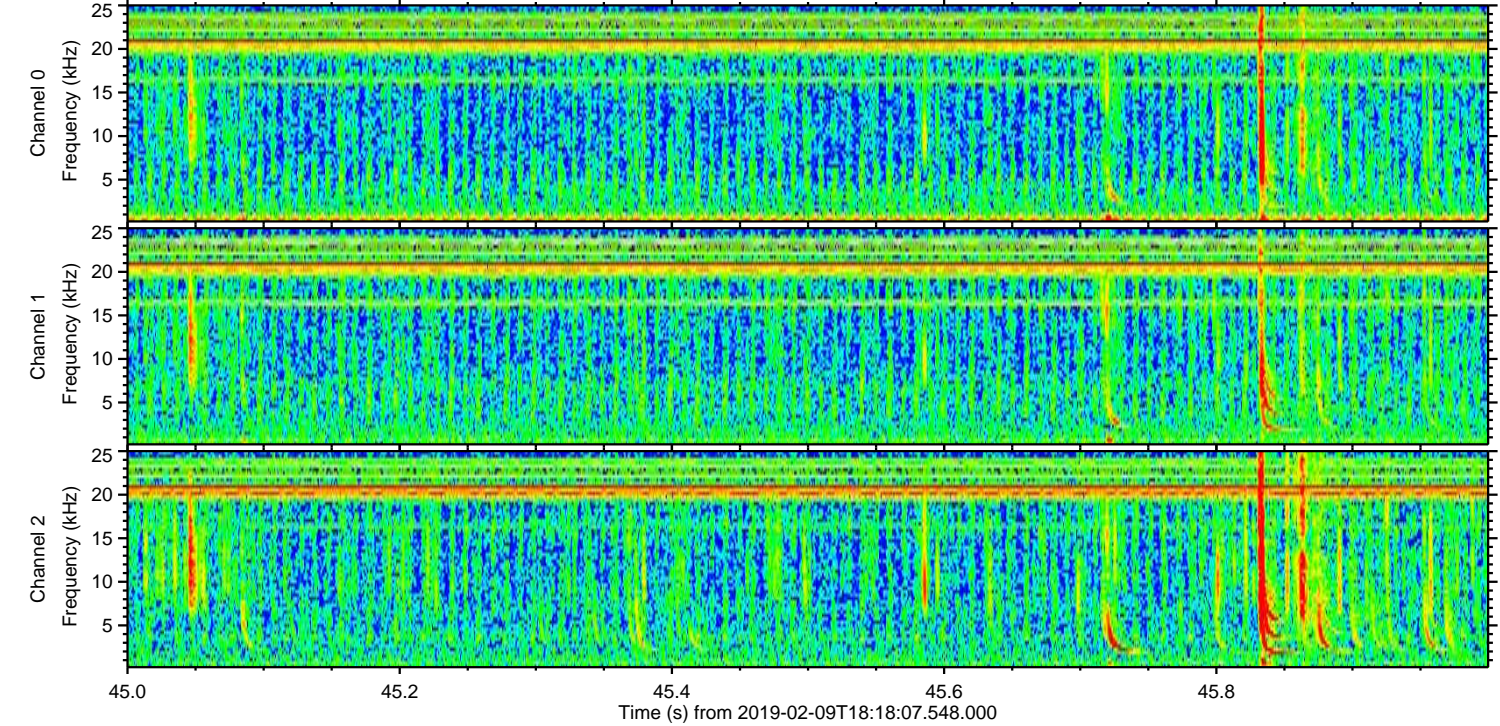
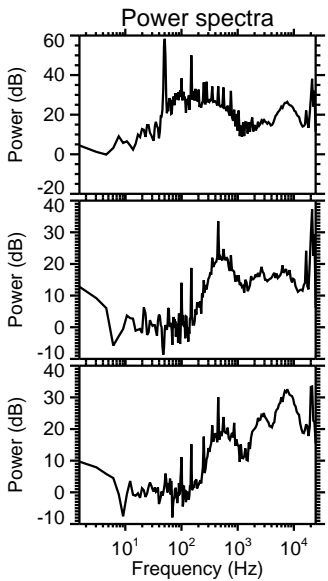
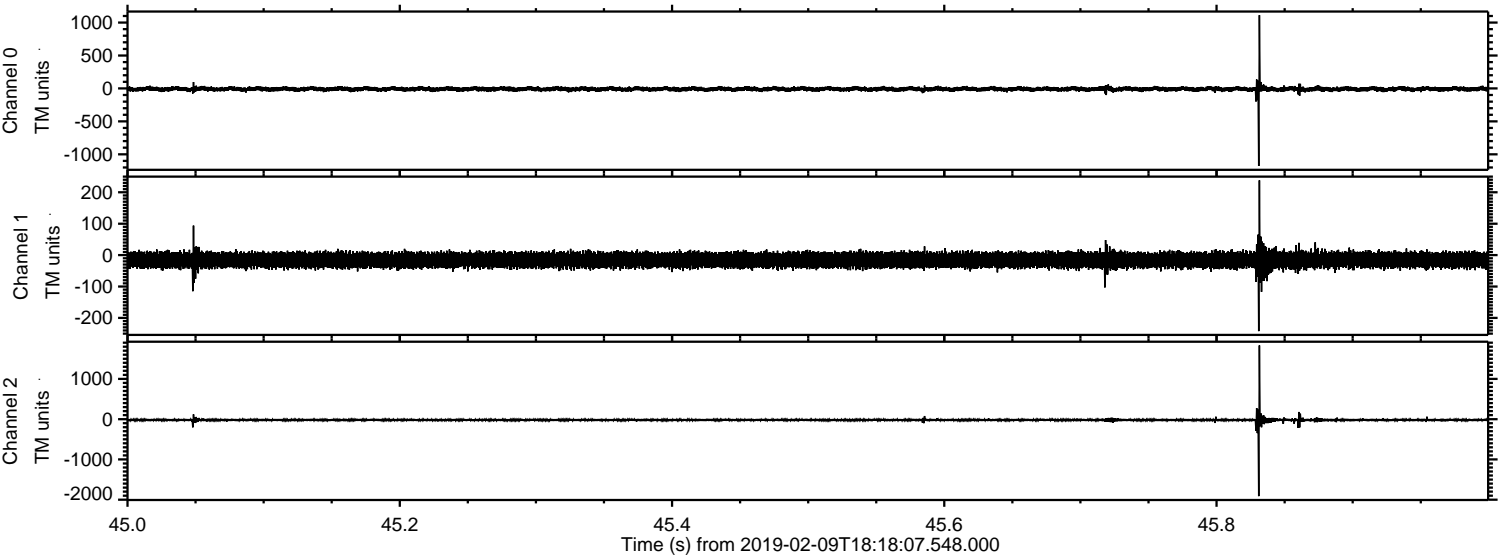
Processed Sat Feb 9 19:25:33 2019 by ELM ver.2012-10-06 from 001\_\_elm20190209\_181806\_\_dat00.bin





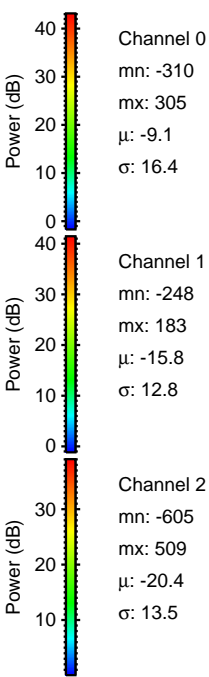
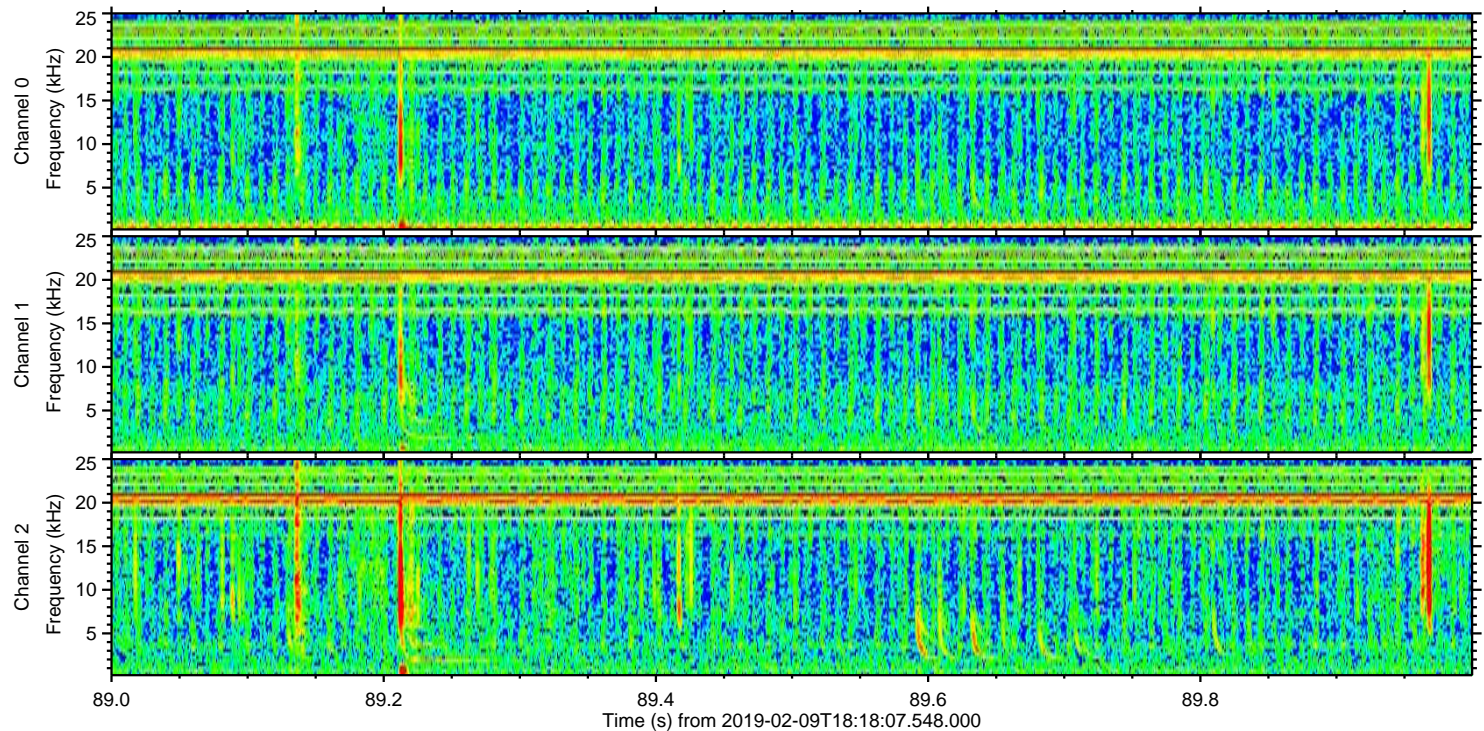
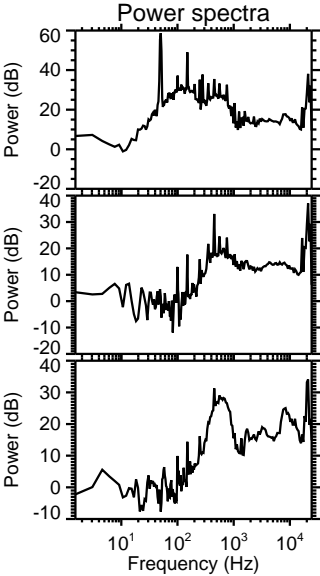
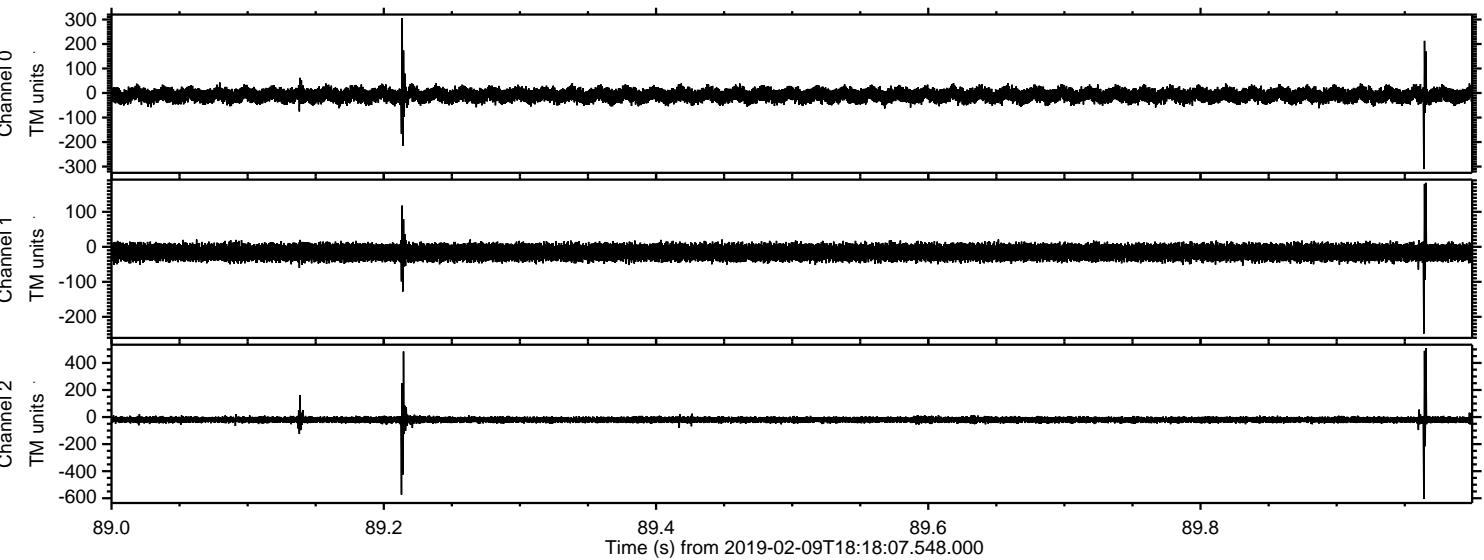
ELMAVAN 3D WAVEFORMS (Measured data sampled at 50 kHz) 51000 packets of 144 samples from 2019-02-09T18:18:07.548.000. Part 46/147

Processed Sat Feb 9 19:25:39 2019 by ELM ver.2012-10-06 from 001\_\_elm20190209\_181806\_\_dat00.bin



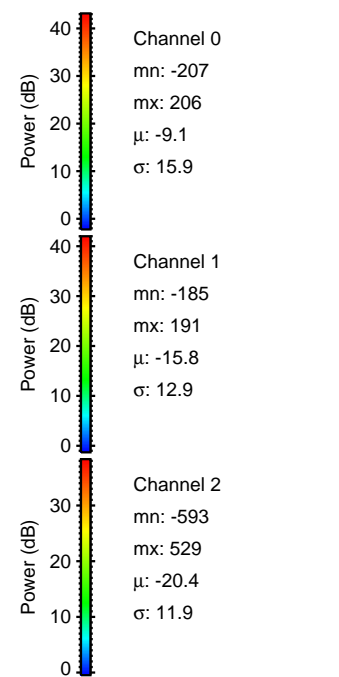
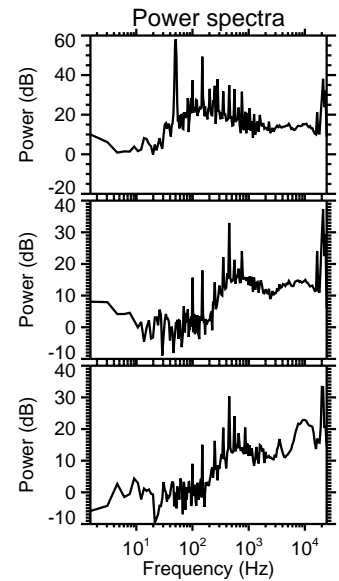
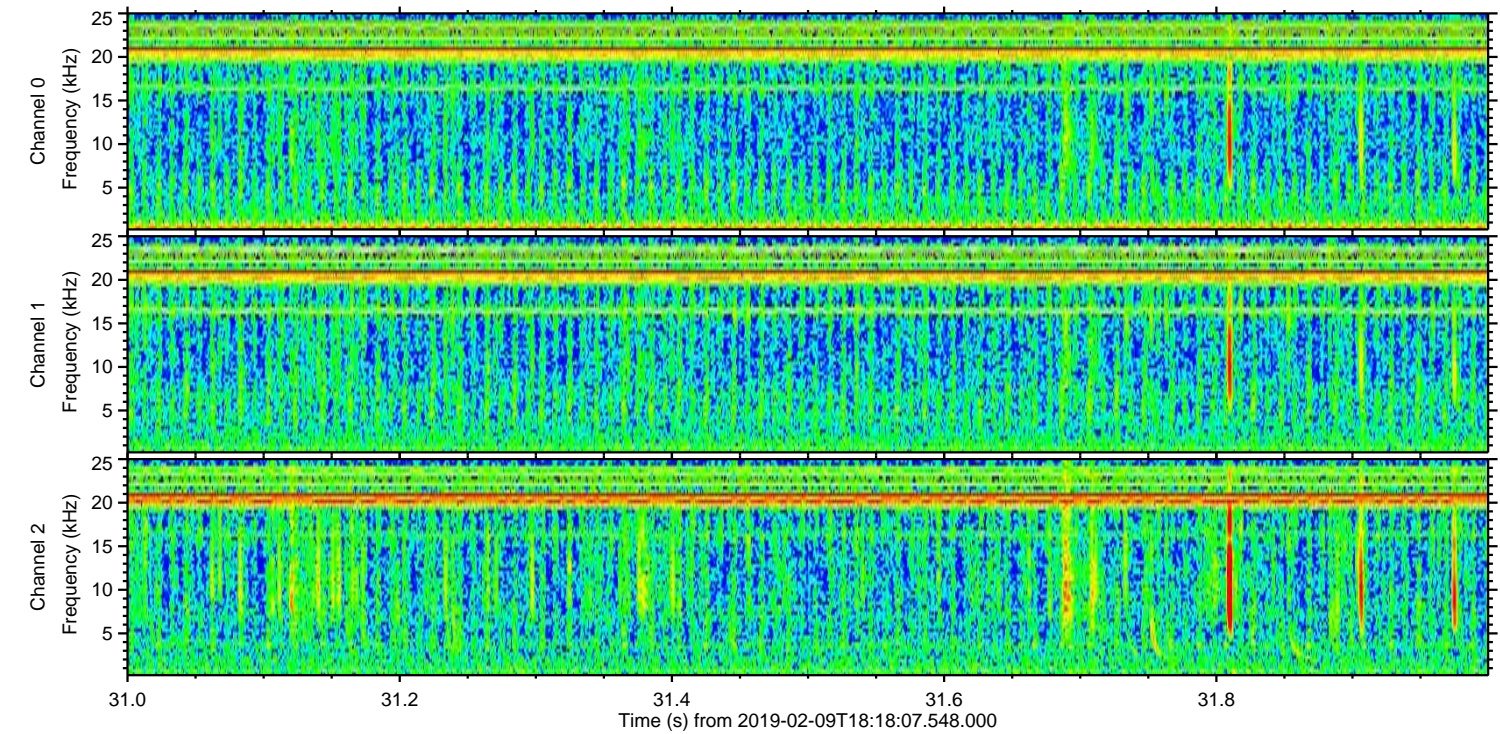
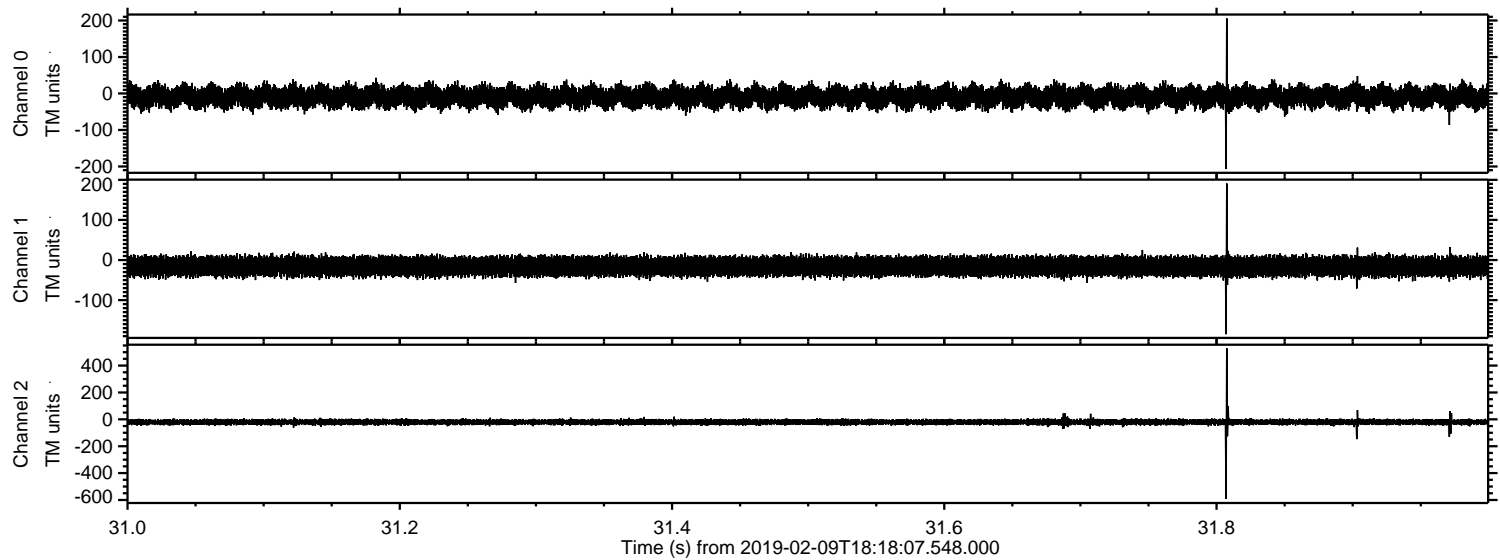


Processed Sat Feb 9 19:25:39 2019 by ELM ver.2012-10-06 from 001\_\_elm20190209\_181806\_\_dat00.bin



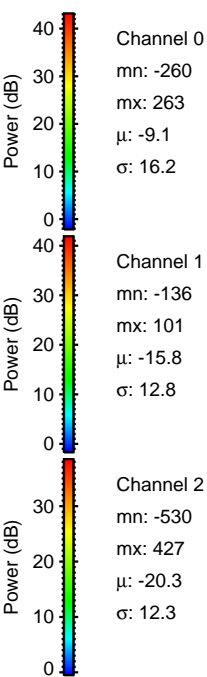
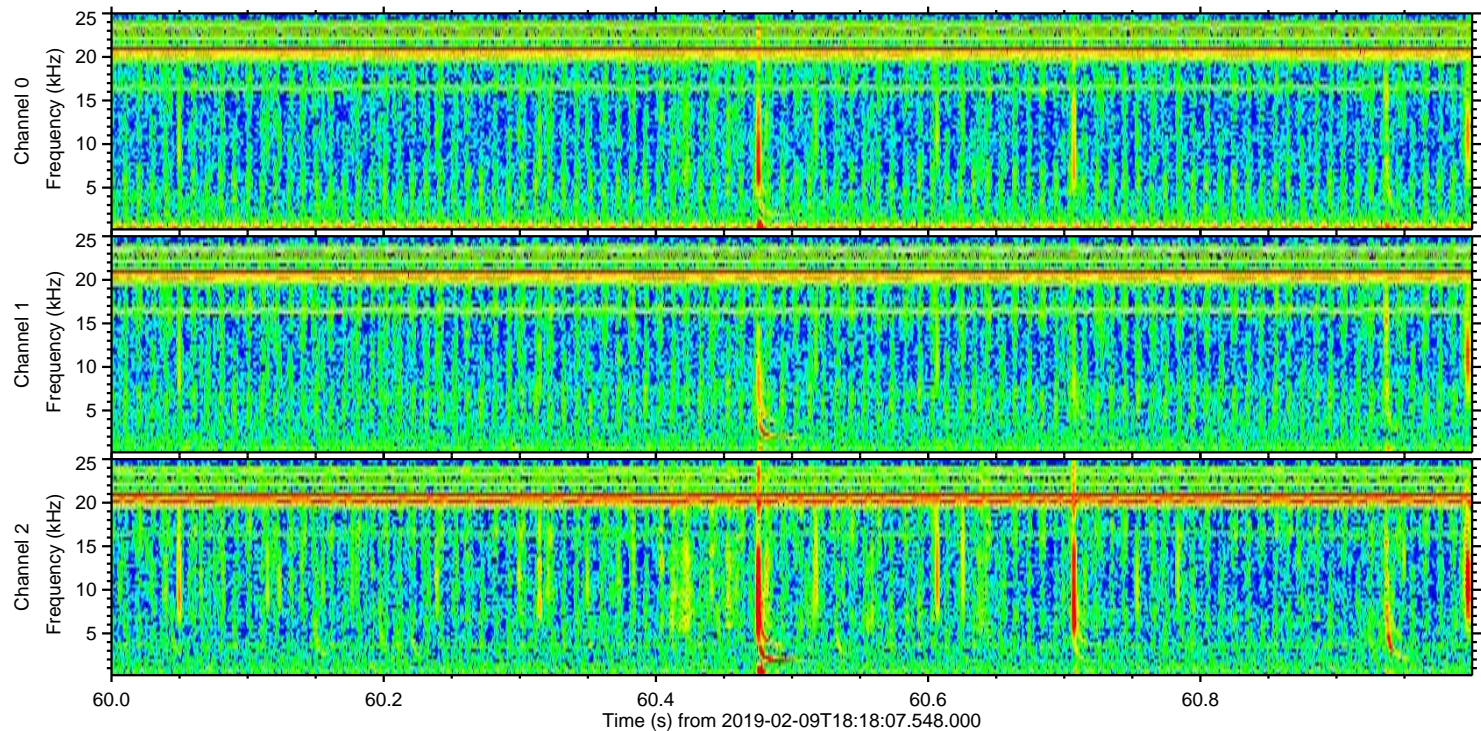
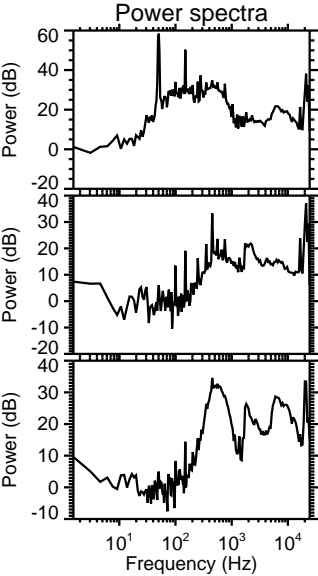
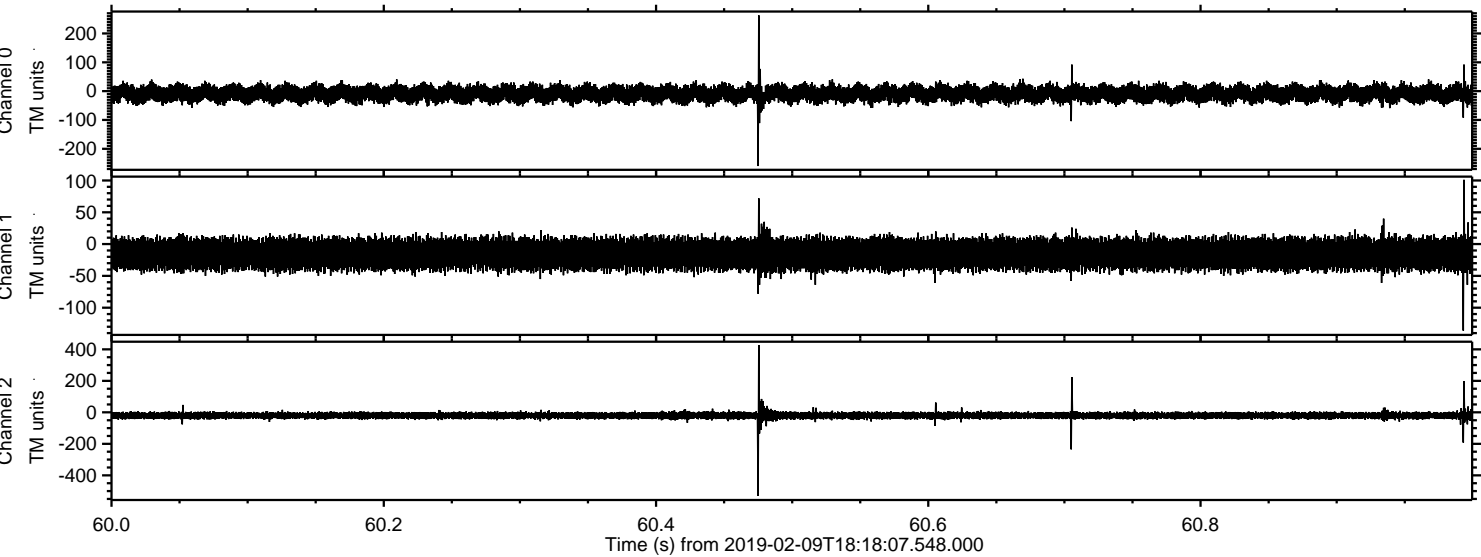


Processed Sat Feb 9 19:25:40 2019 by ELM ver.2012-10-06 from 001\_\_elm20190209\_181806\_\_dat00.bin



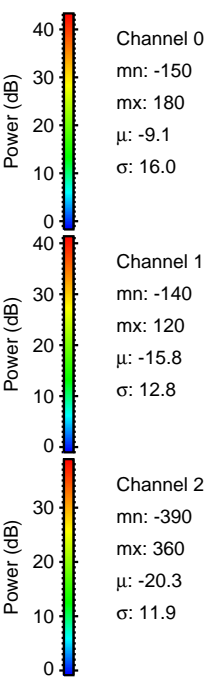
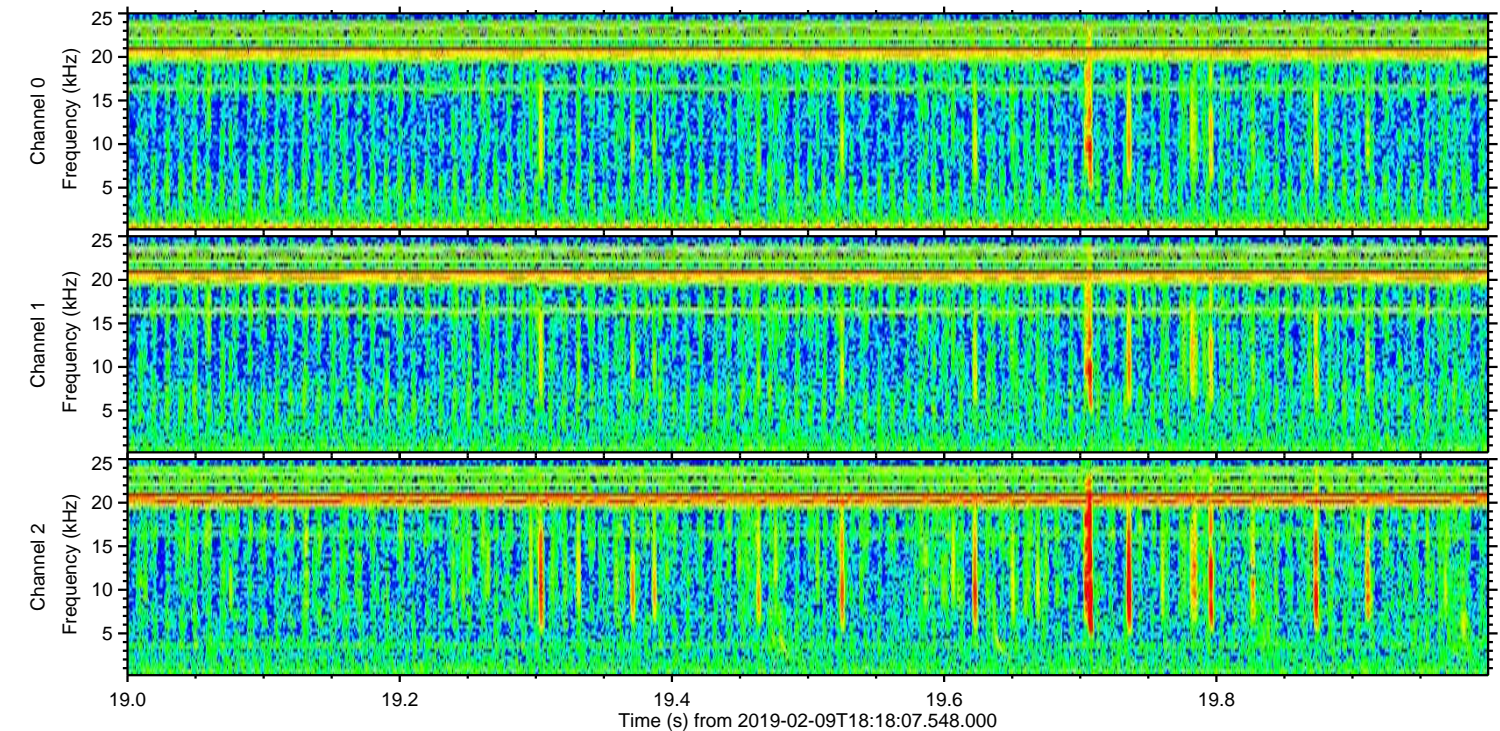
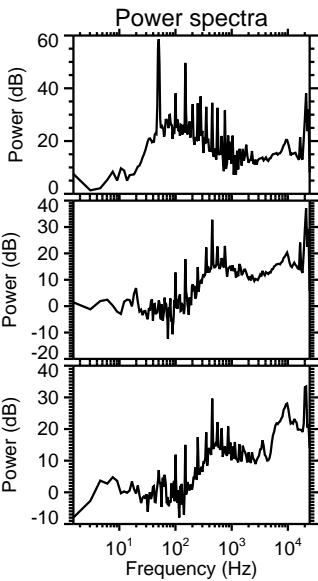
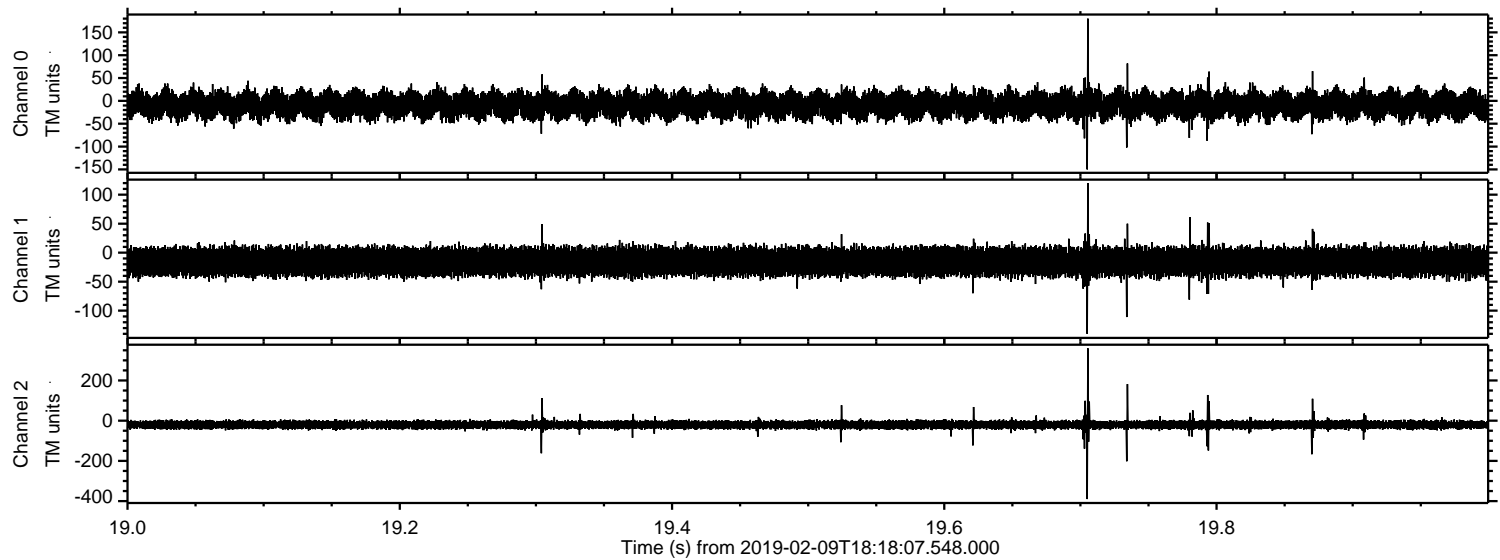


Processed Sat Feb 9 19:25:41 2019 by ELM ver.2012-10-06 from 001\_\_elm20190209\_181806\_\_dat00.bin



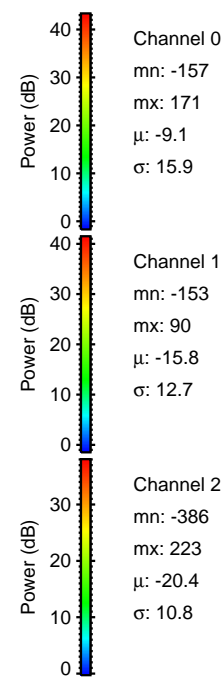
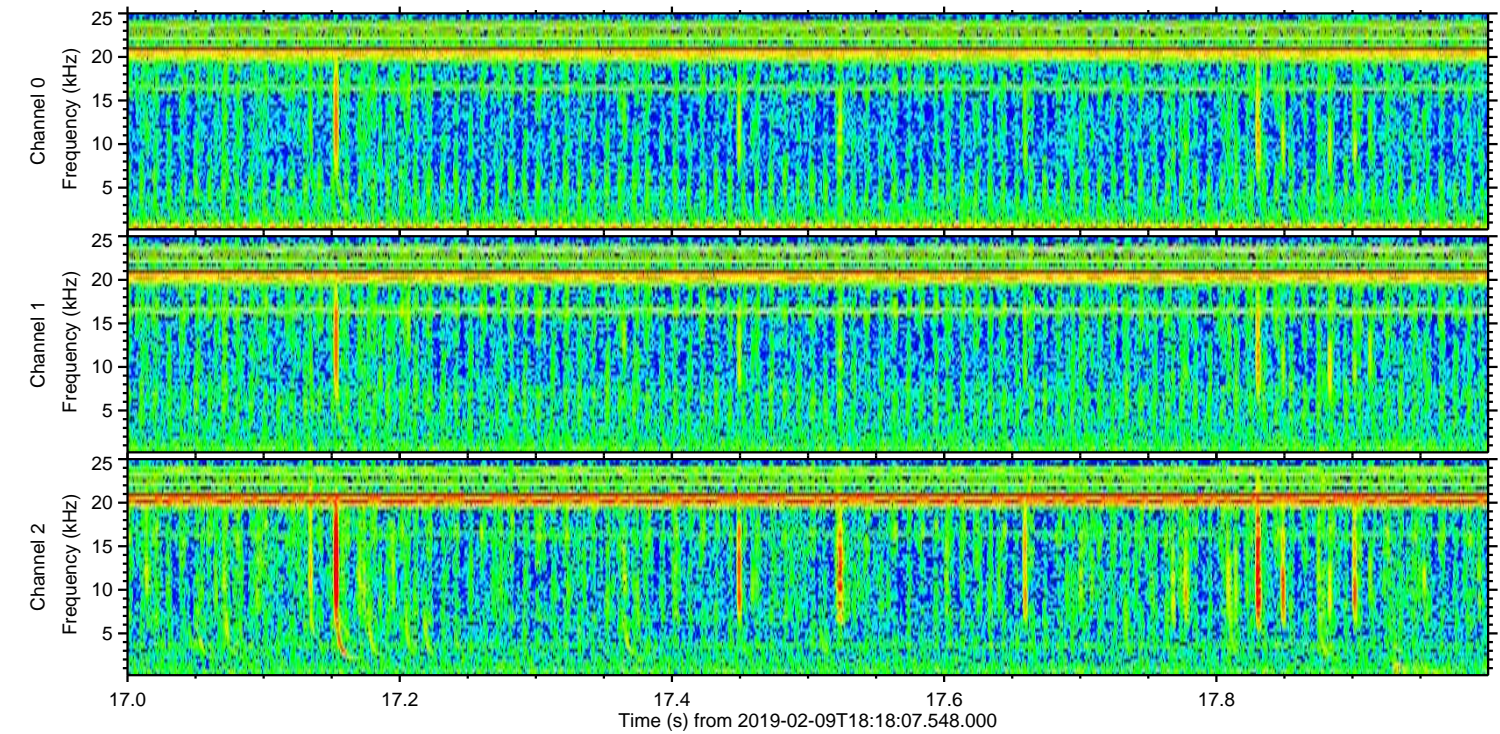
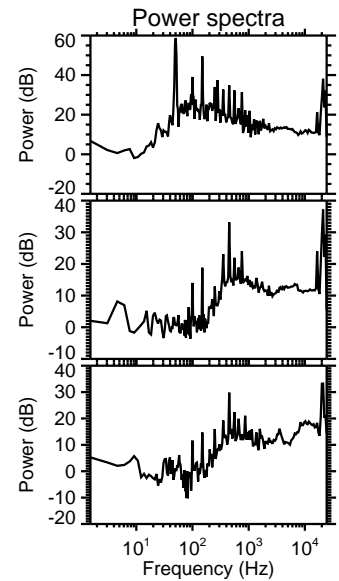
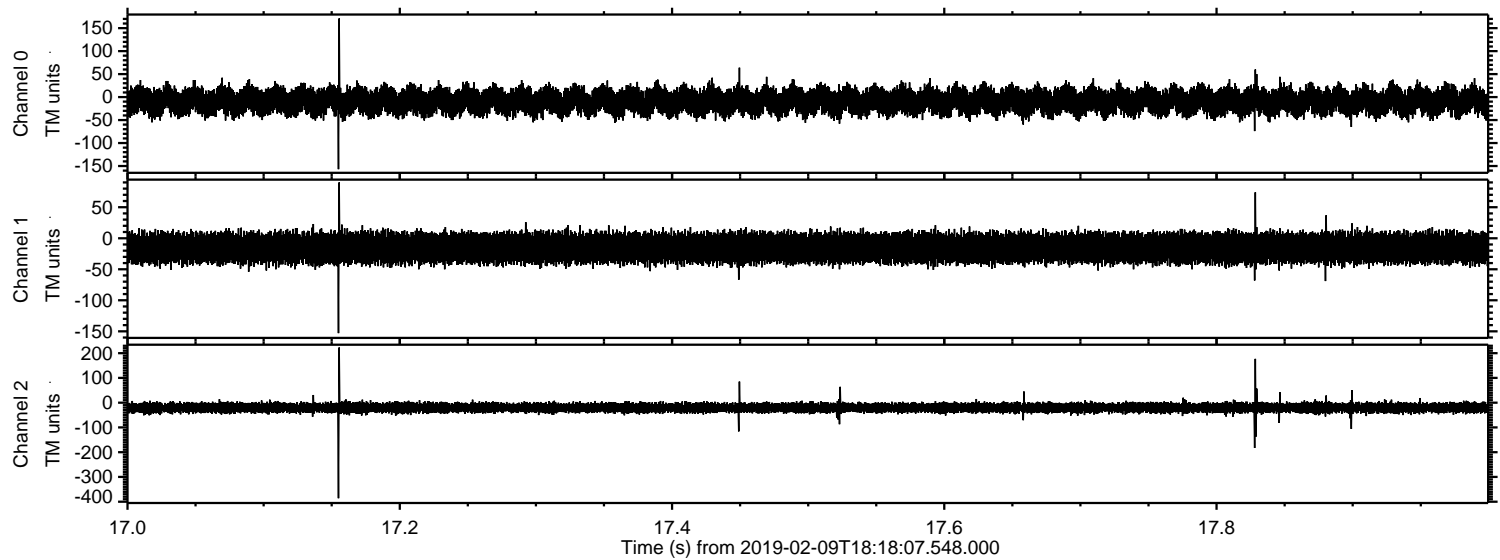


Processed Sat Feb 9 19:25:41 2019 by ELM ver.2012-10-06 from 001\_\_elm20190209\_181806\_\_dat00.bin



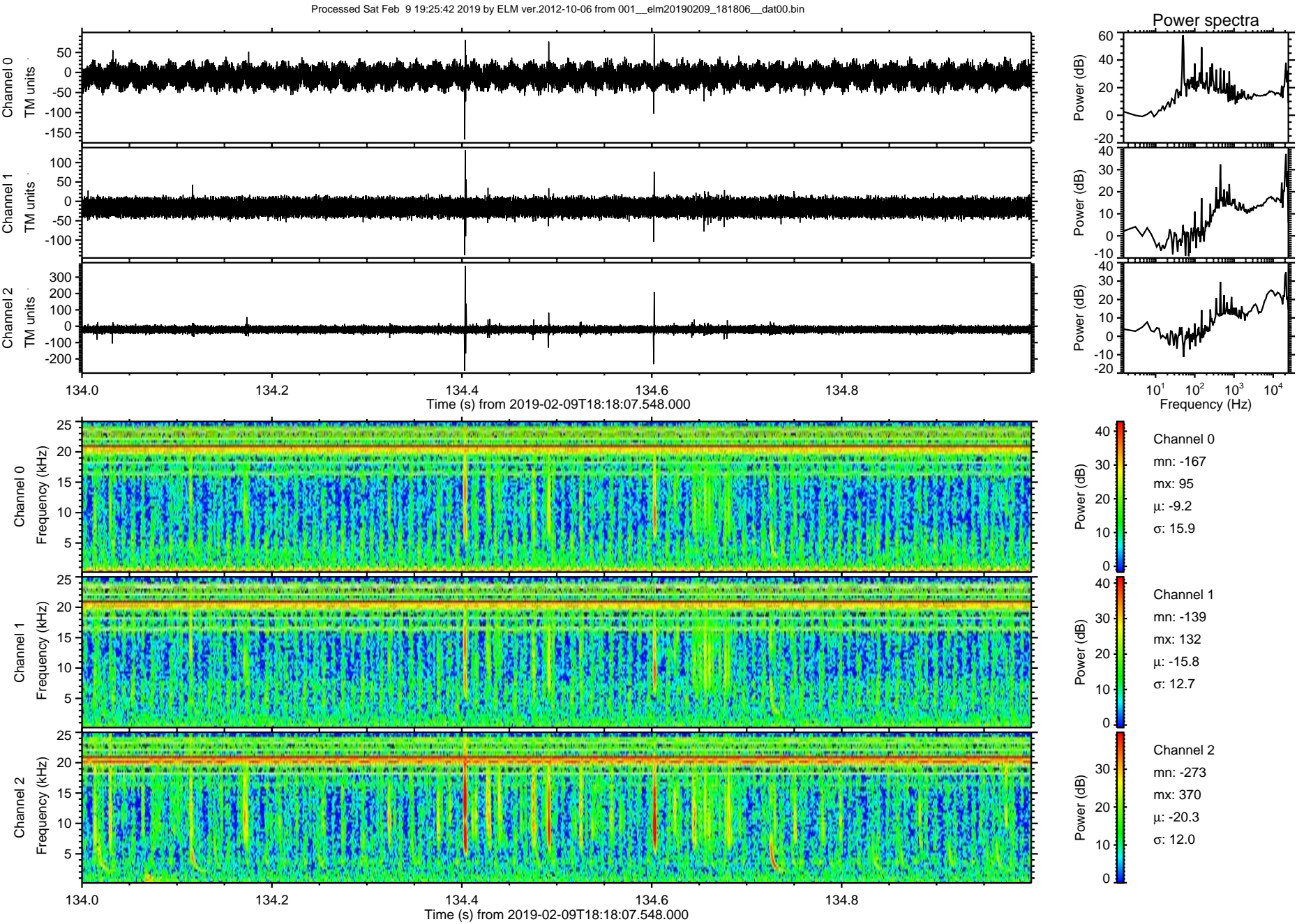


Processed Sat Feb 9 19:25:42 2019 by ELM ver.2012-10-06 from 001\_\_elm20190209\_181806\_\_dat00.bin



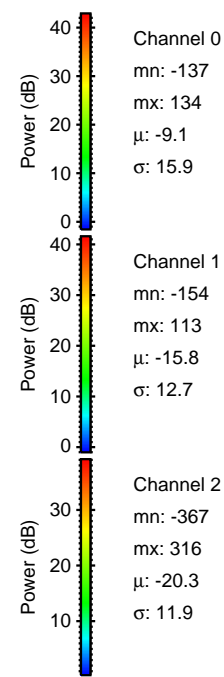
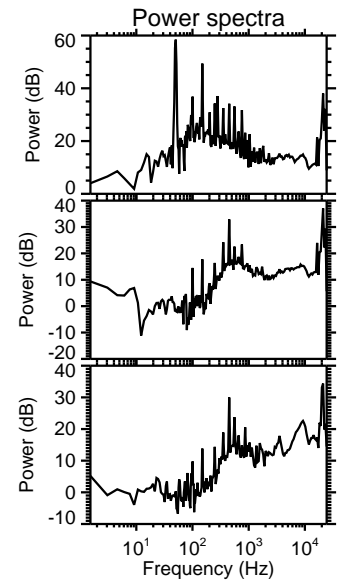
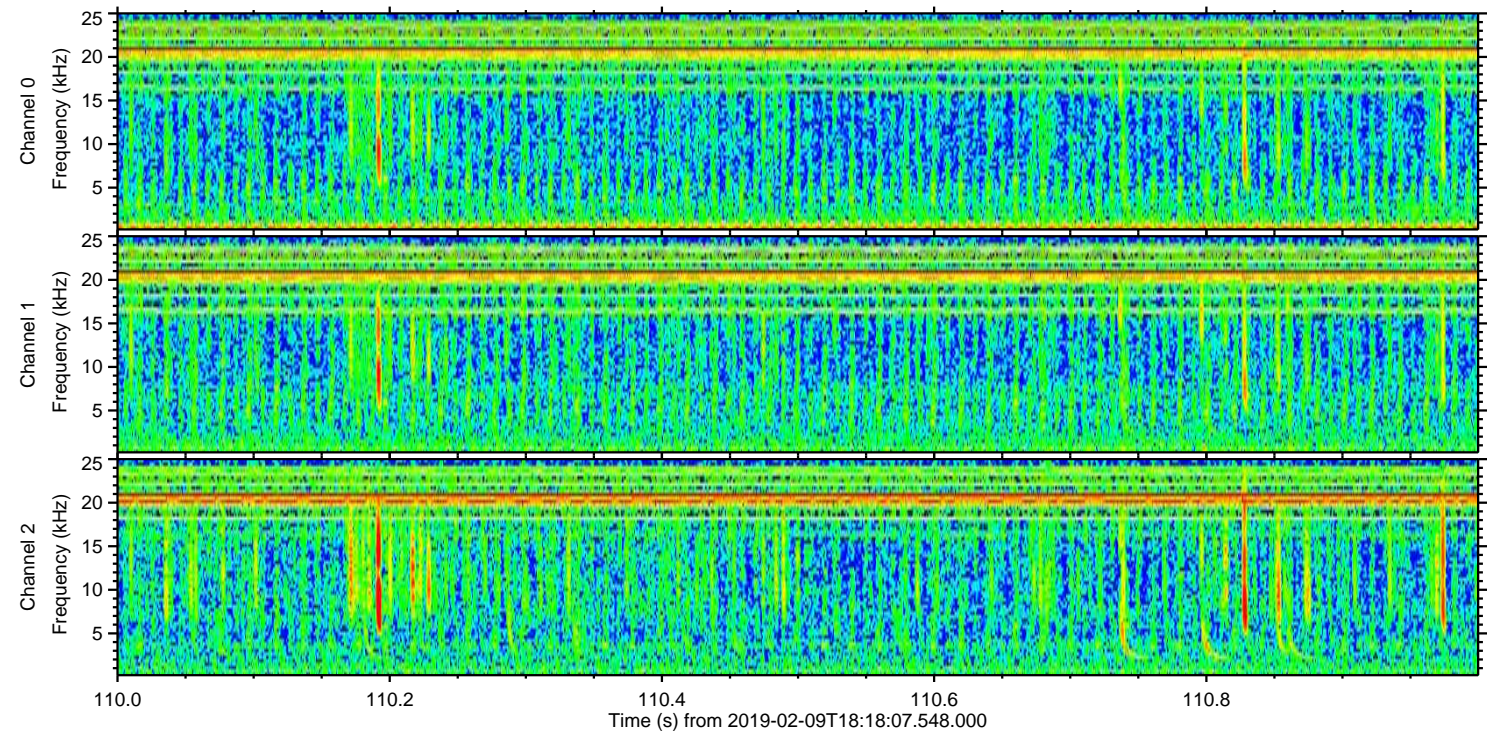
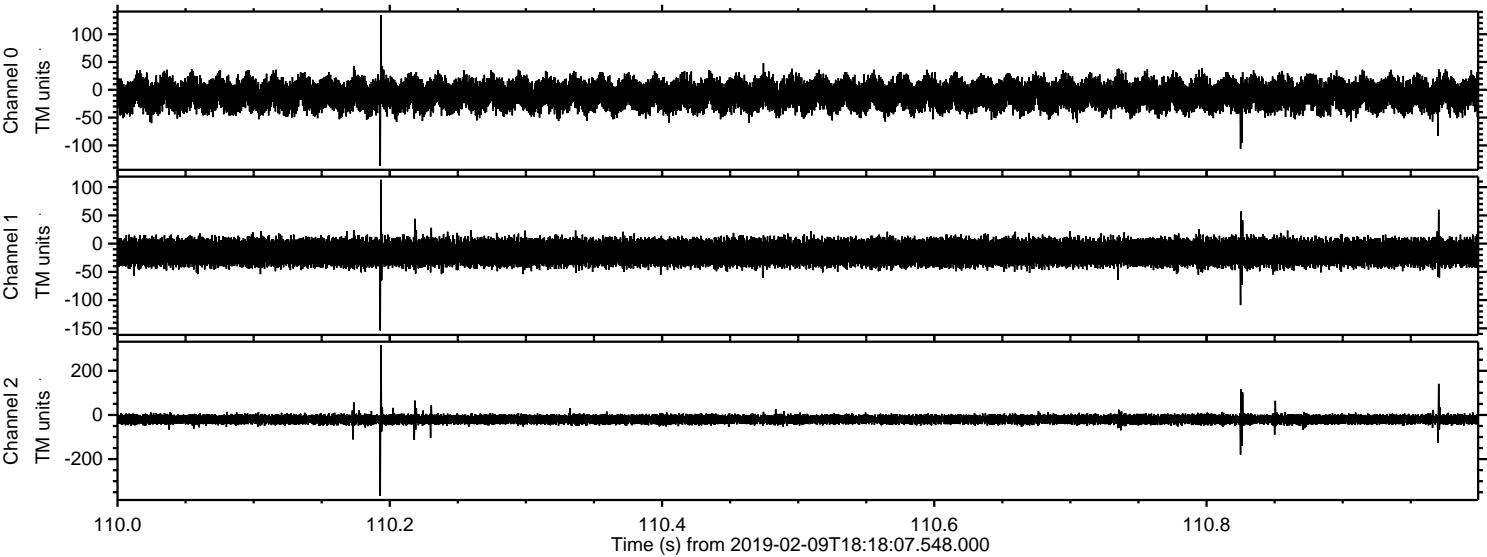


ELMAVAN 3D WAVEFORMS (Measured data sampled at 50 kHz) 51000 packets of 144 samples from 2019-02-09T18:18:07.548.000. Part 135/147



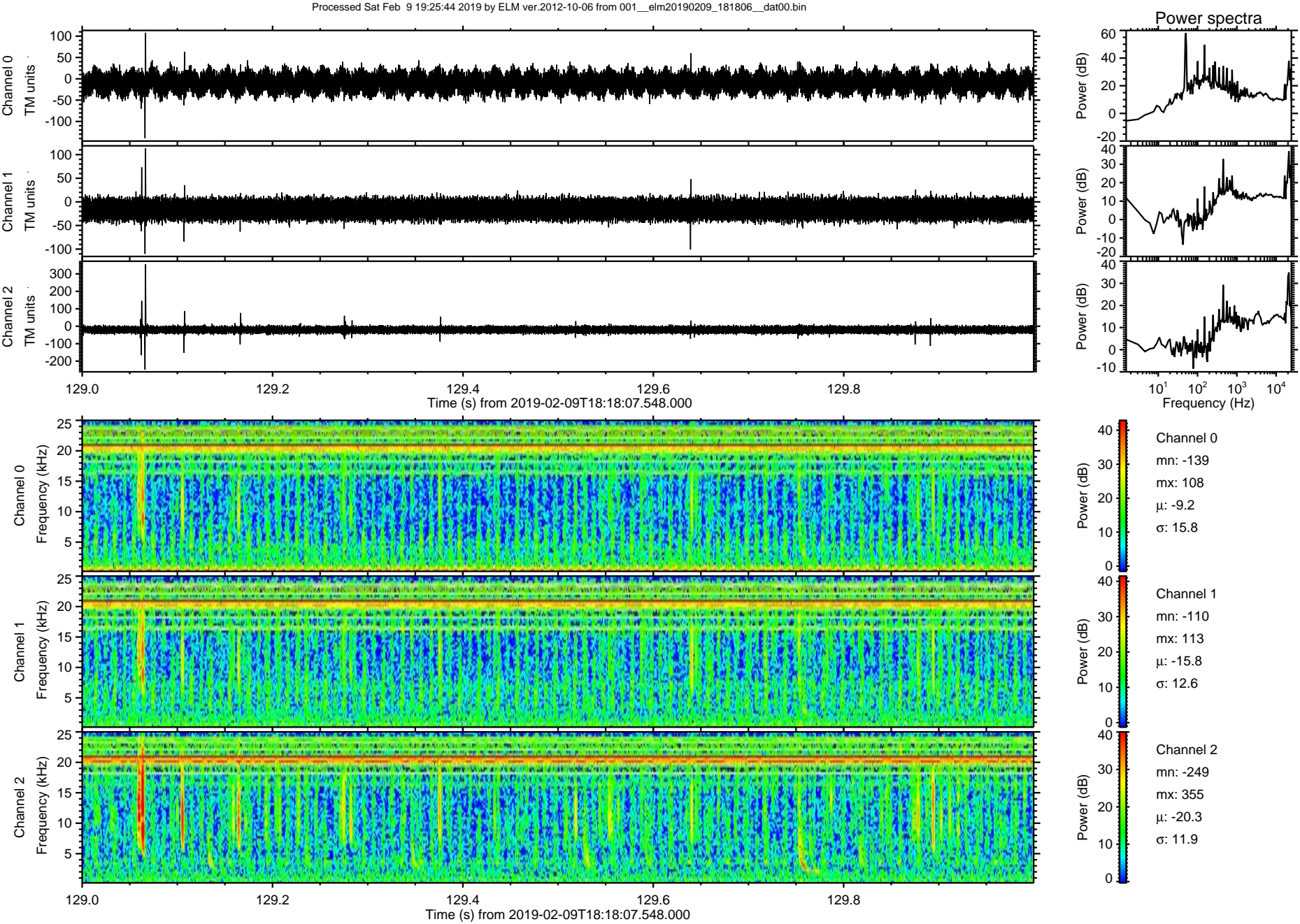


Processed Sat Feb 9 19:25:43 2019 by ELM ver.2012-10-06 from 001\_\_elm20190209\_181806\_\_dat00.bin





ELMAVAN 3D WAVEFORMS (Measured data sampled at 50 kHz) 51000 packets of 144 samples from 2019-02-09T18:18:07.548.000. Part 130/147





Processed Sat Feb 9 19:25:44 2019 by ELM ver.2012-10-06 from 001\_\_elm20190209\_181806\_\_dat00.bin

