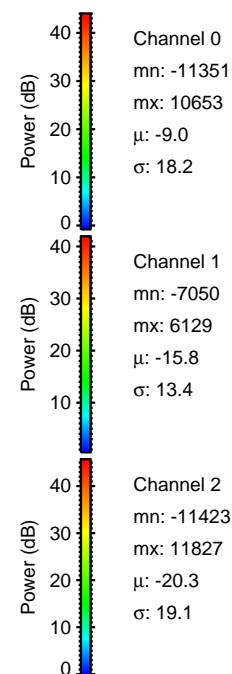
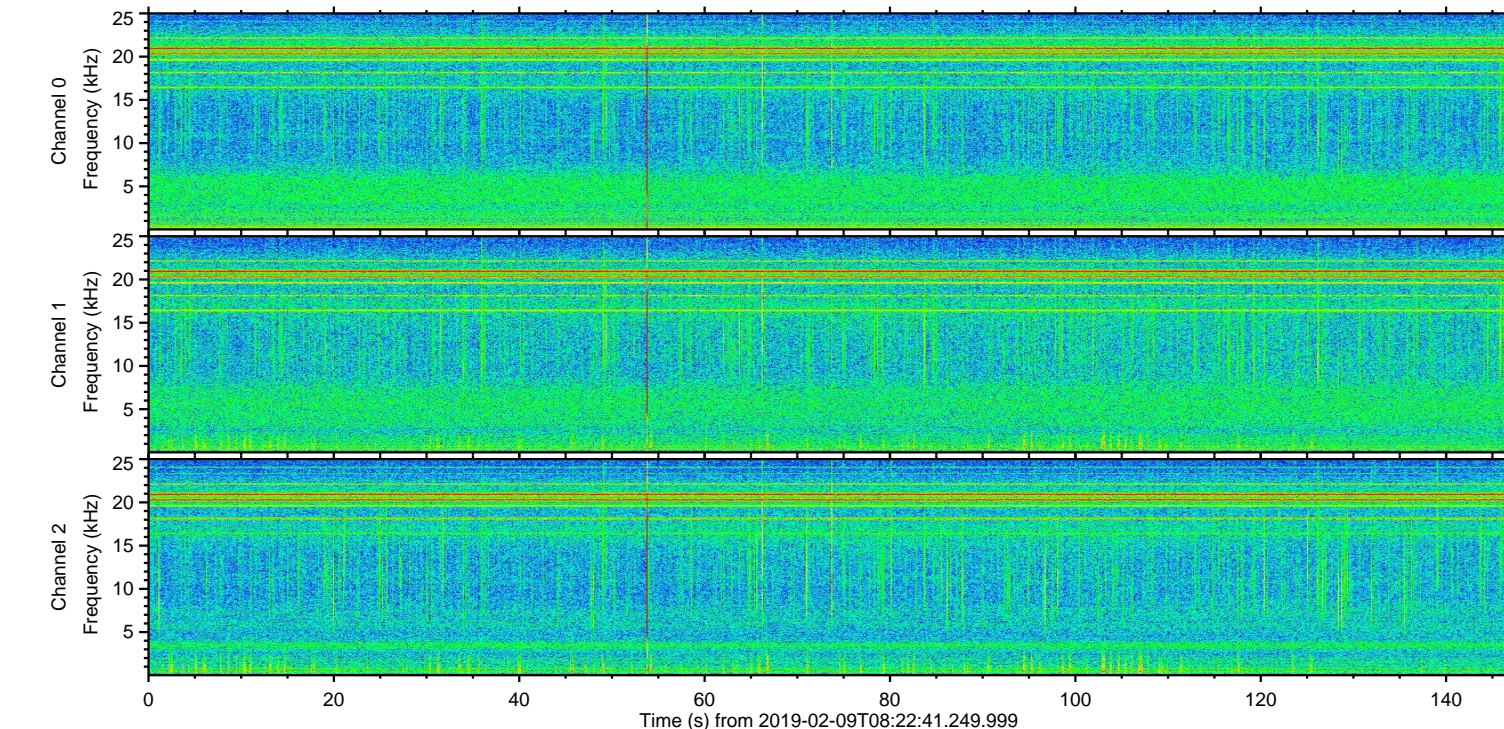
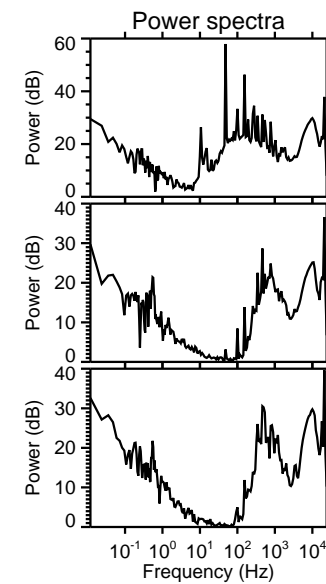
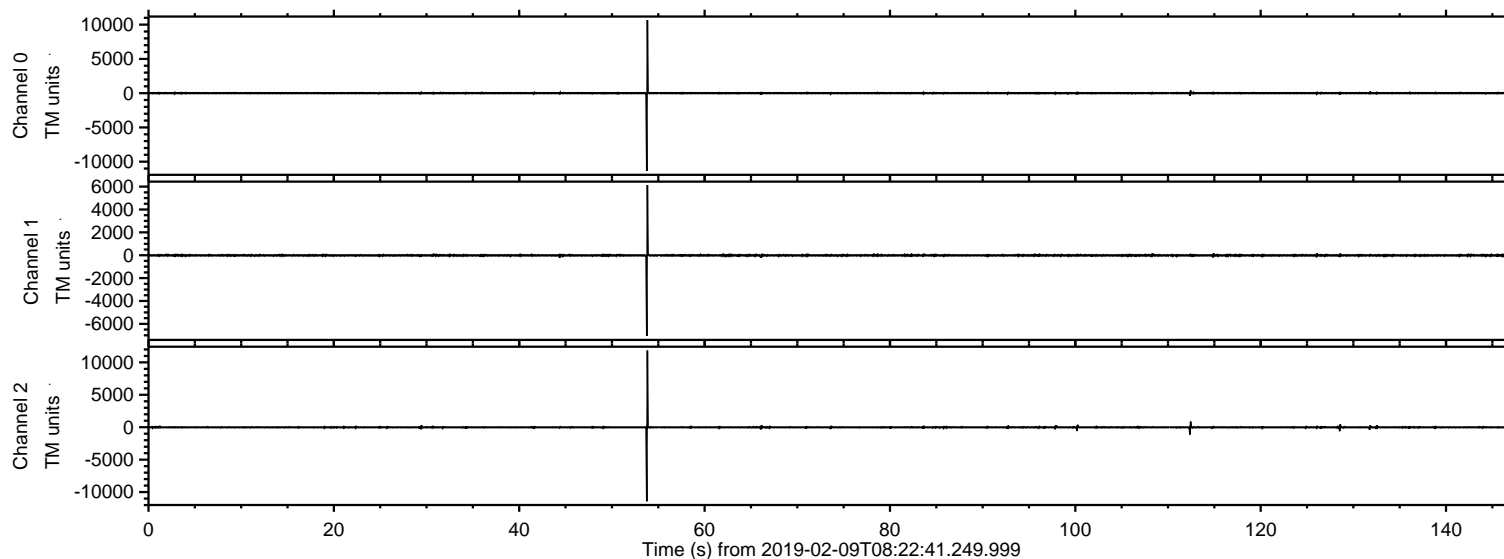


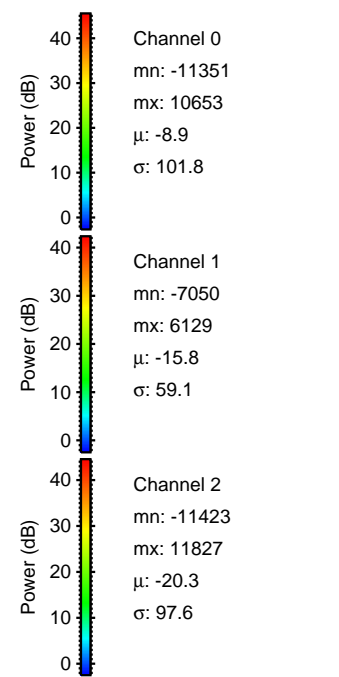
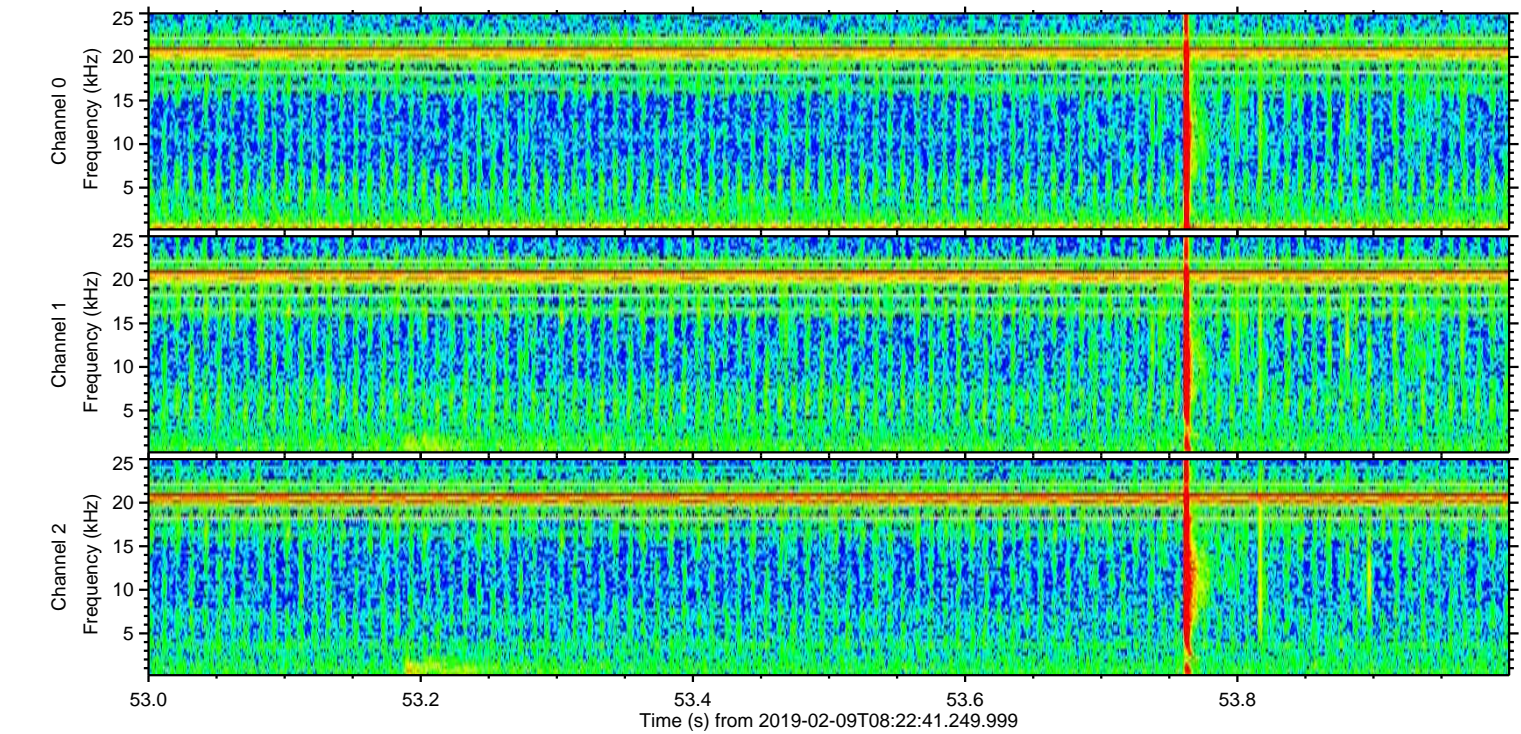
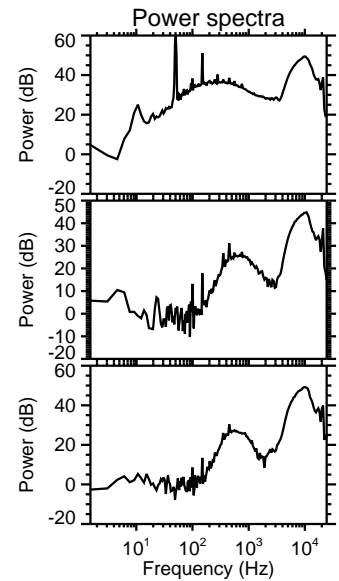
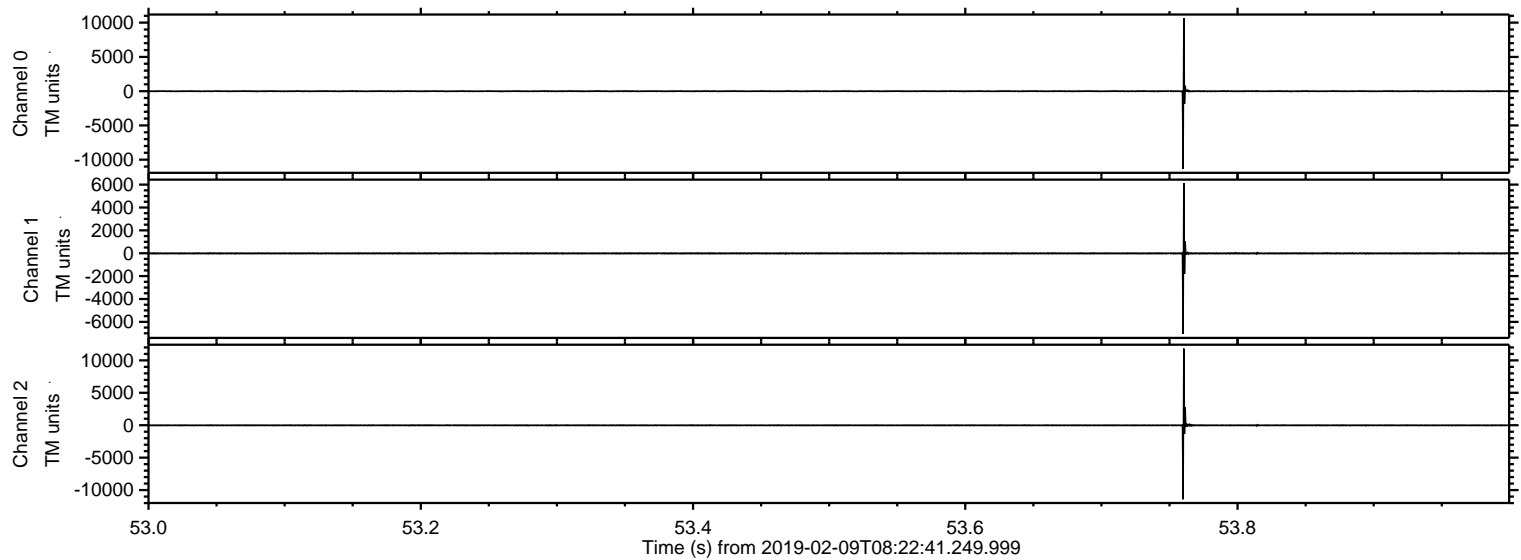
# ELMAVAN 3D WAVEFORMS (Measured data sampled at 50 kHz) 51000 packets of 144 samples from 2019-02-09T08:22:41.249.999.

Processed Sat Feb 9 09:30:47 2019 by ELM ver.2012-10-06 from 001\_\_elm20190209\_082240\_\_dat00.bin





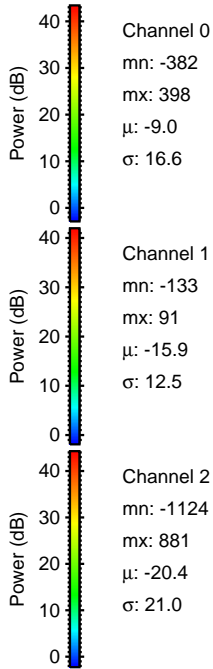
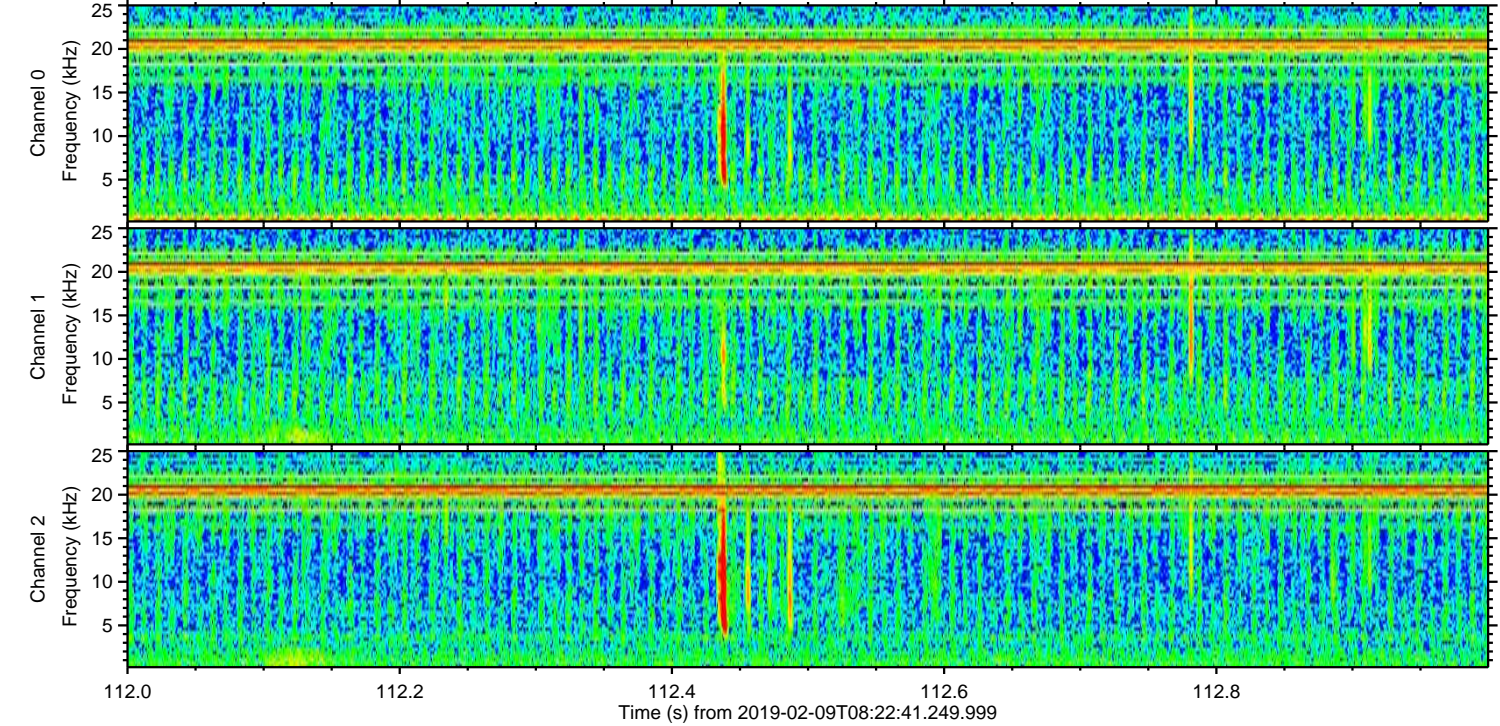
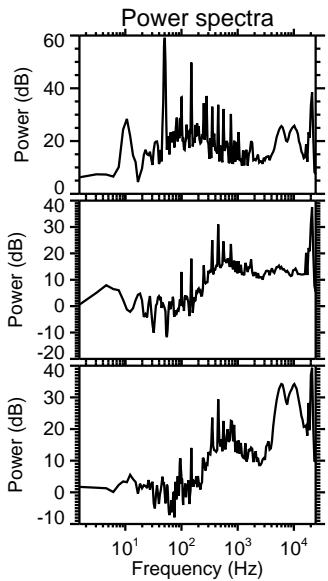
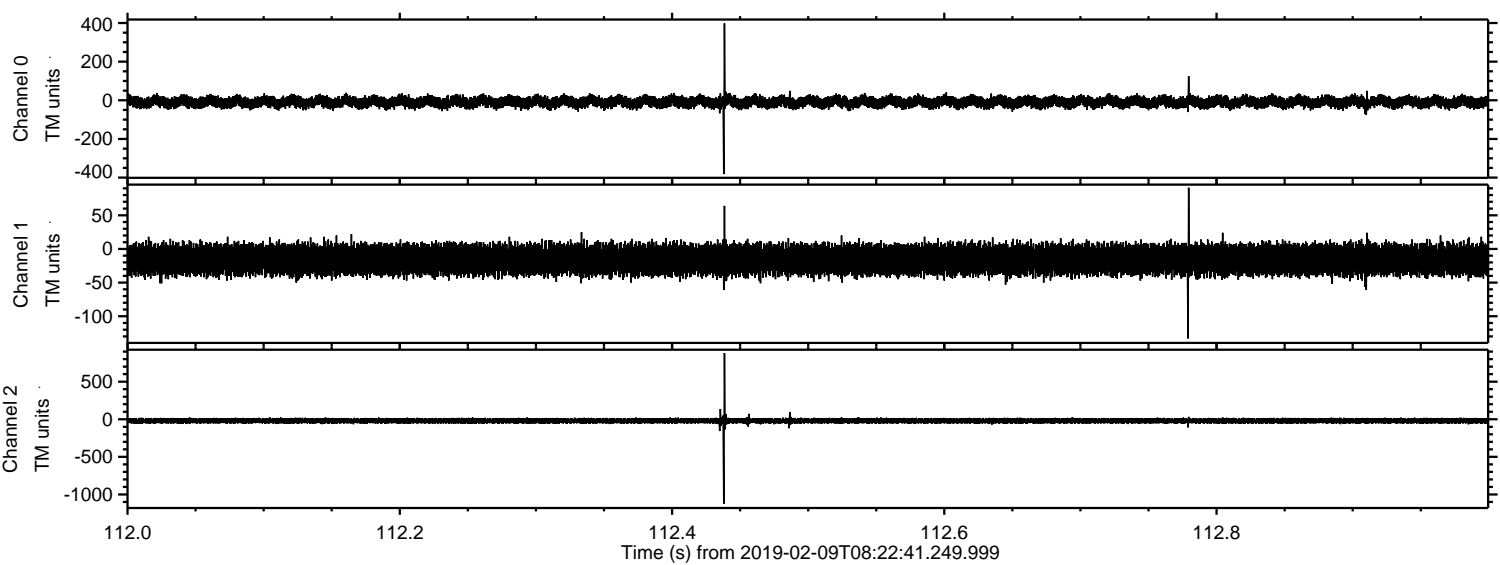
Processed Sat Feb 9 09:30:53 2019 by ELM ver.2012-10-06 from 001\_\_elm20190209\_082240\_\_dat00.bin





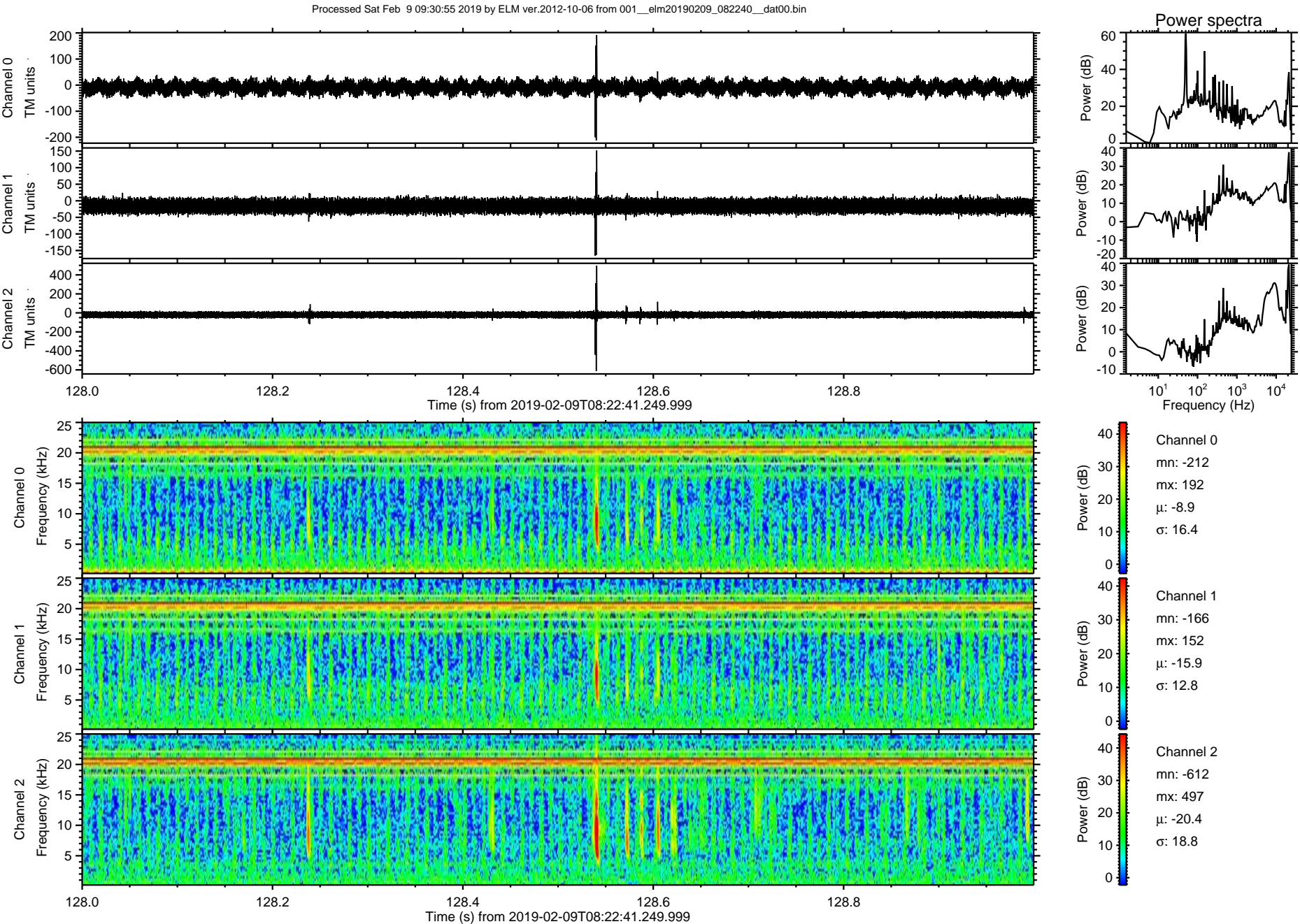
ELMAVAN 3D WAVEFORMS (Measured data sampled at 50 kHz) 51000 packets of 144 samples from 2019-02-09T08:22:41.249.999. Part 113/147

Processed Sat Feb 9 09:30:54 2019 by ELM ver.2012-10-06 from 001\_\_elm20190209\_082240\_\_dat00.bin



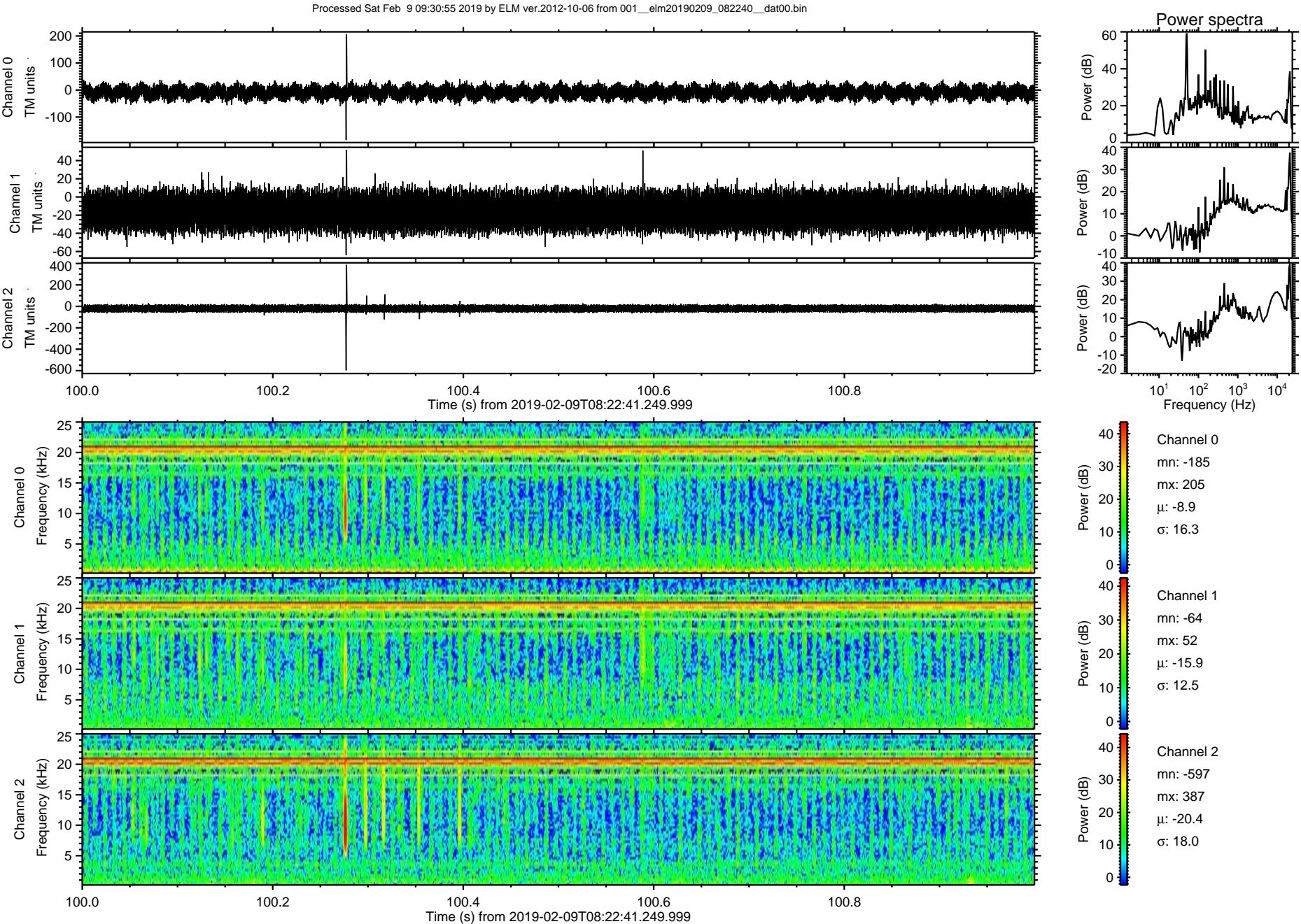


ELMAVAN 3D WAVEFORMS (Measured data sampled at 50 kHz) 51000 packets of 144 samples from 2019-02-09T08:22:41.249.999. Part 129/147



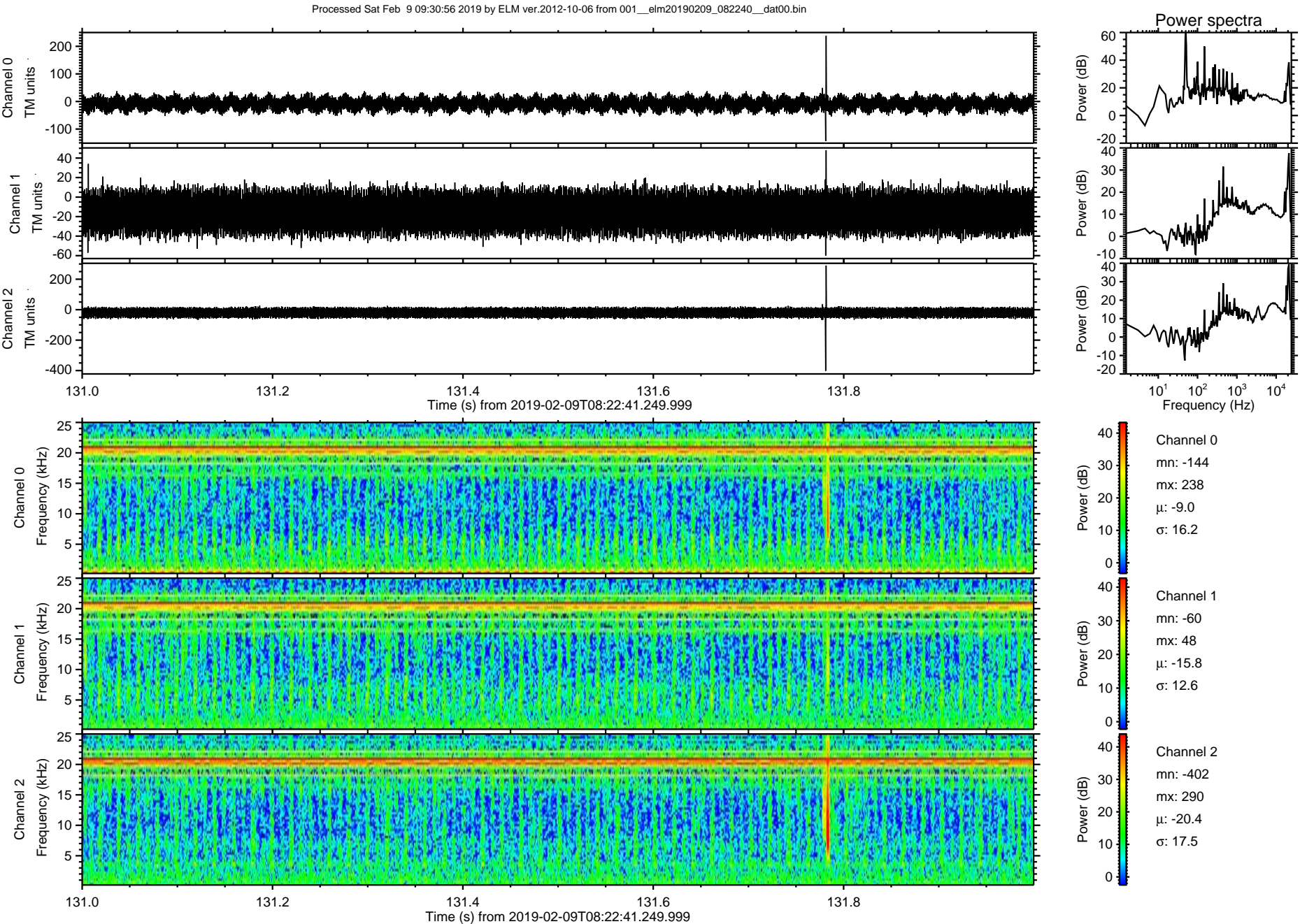


ELMAVAN 3D WAVEFORMS (Measured data sampled at 50 kHz) 51000 packets of 144 samples from 2019-02-09T08:22:41.249.999. Part 101/147



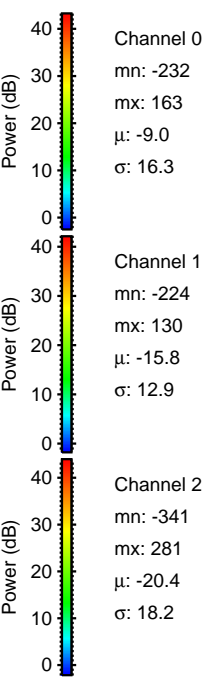
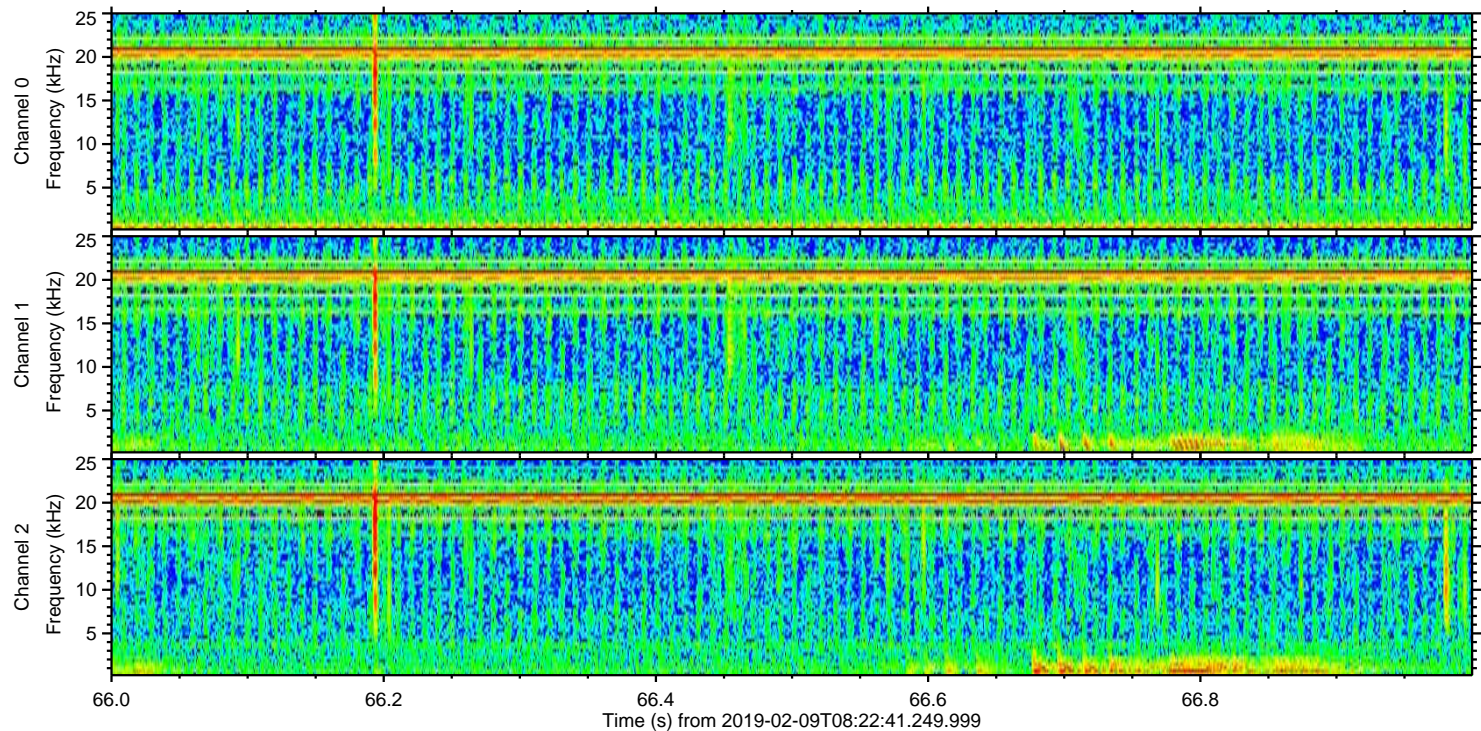
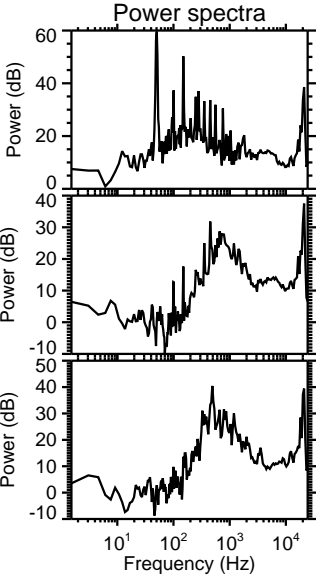
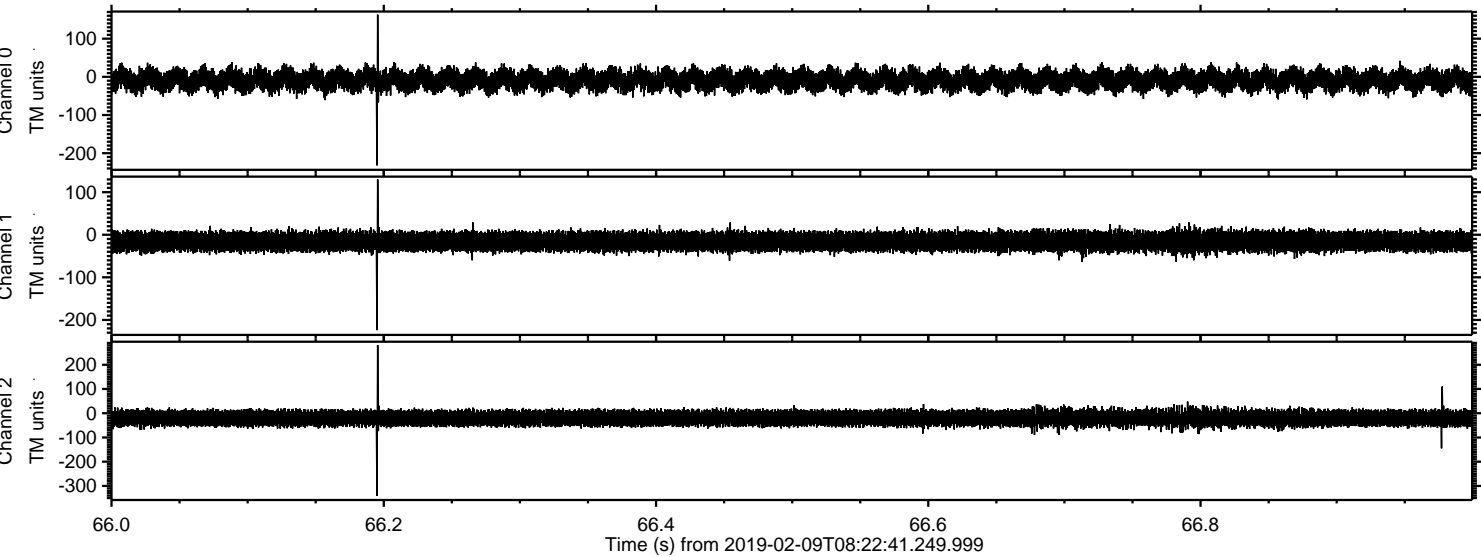


ELMAVAN 3D WAVEFORMS (Measured data sampled at 50 kHz) 51000 packets of 144 samples from 2019-02-09T08:22:41.249.999. Part 132/147



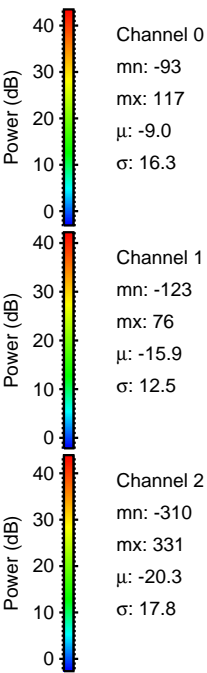
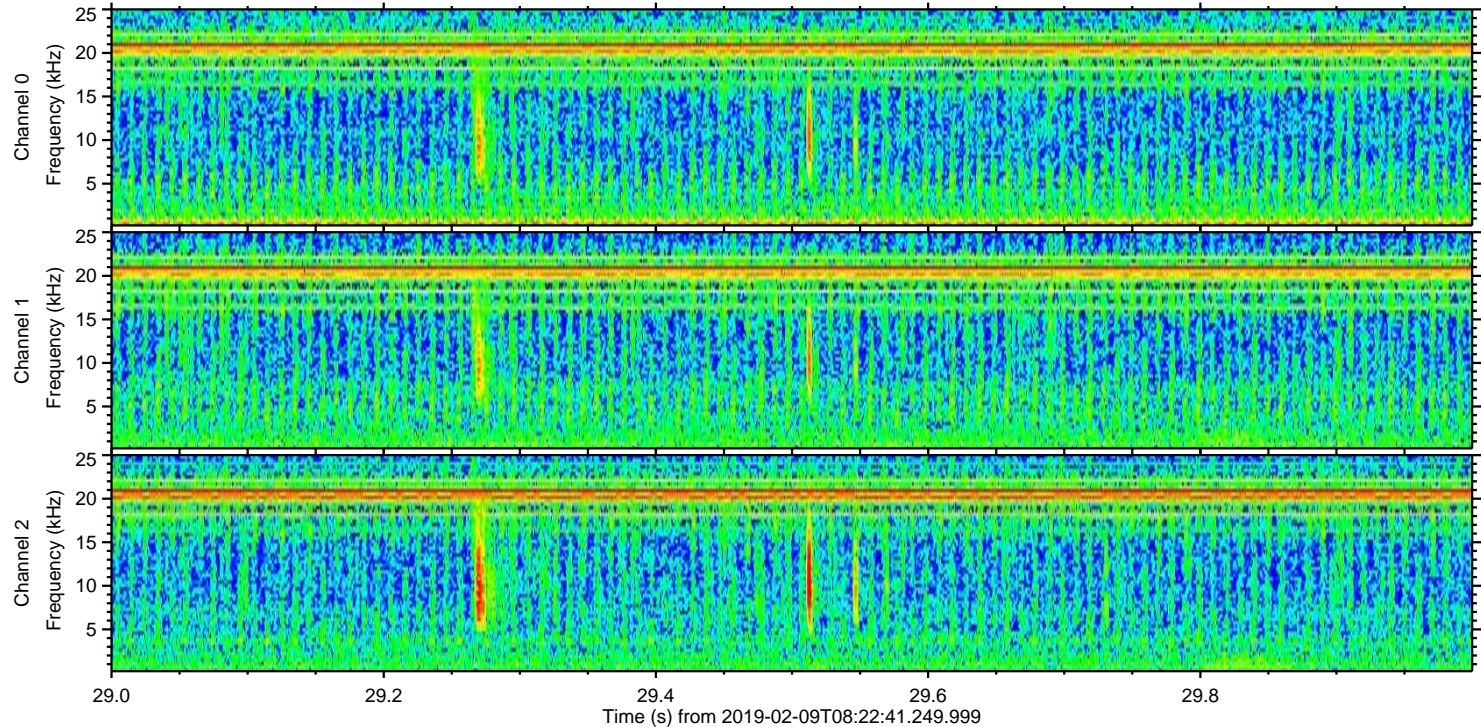
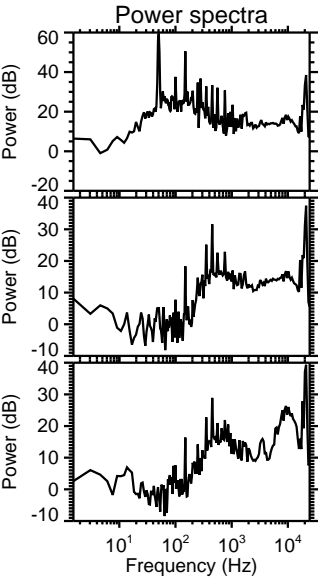
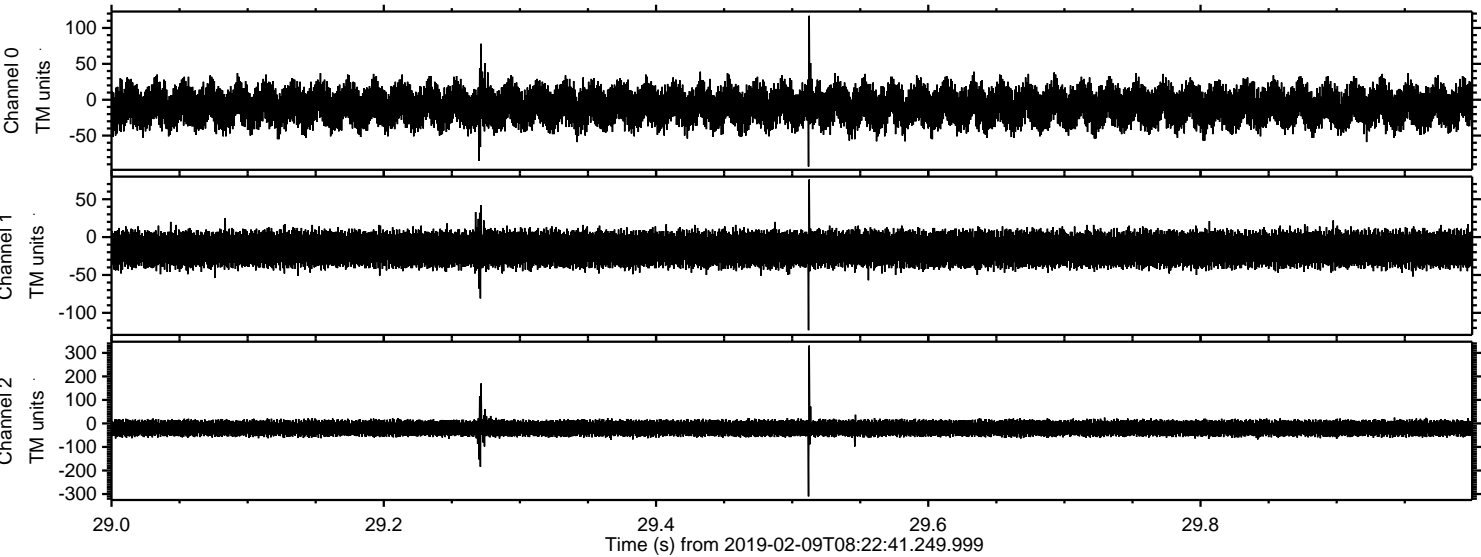


Processed Sat Feb 9 09:30:56 2019 by ELM ver.2012-10-06 from 001\_\_elm20190209\_082240\_\_dat00.bin



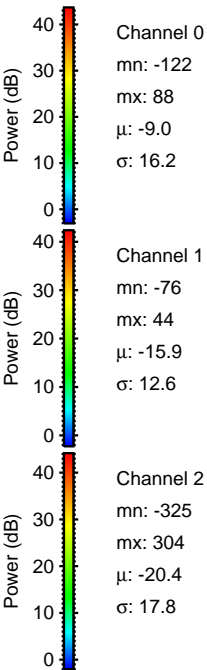
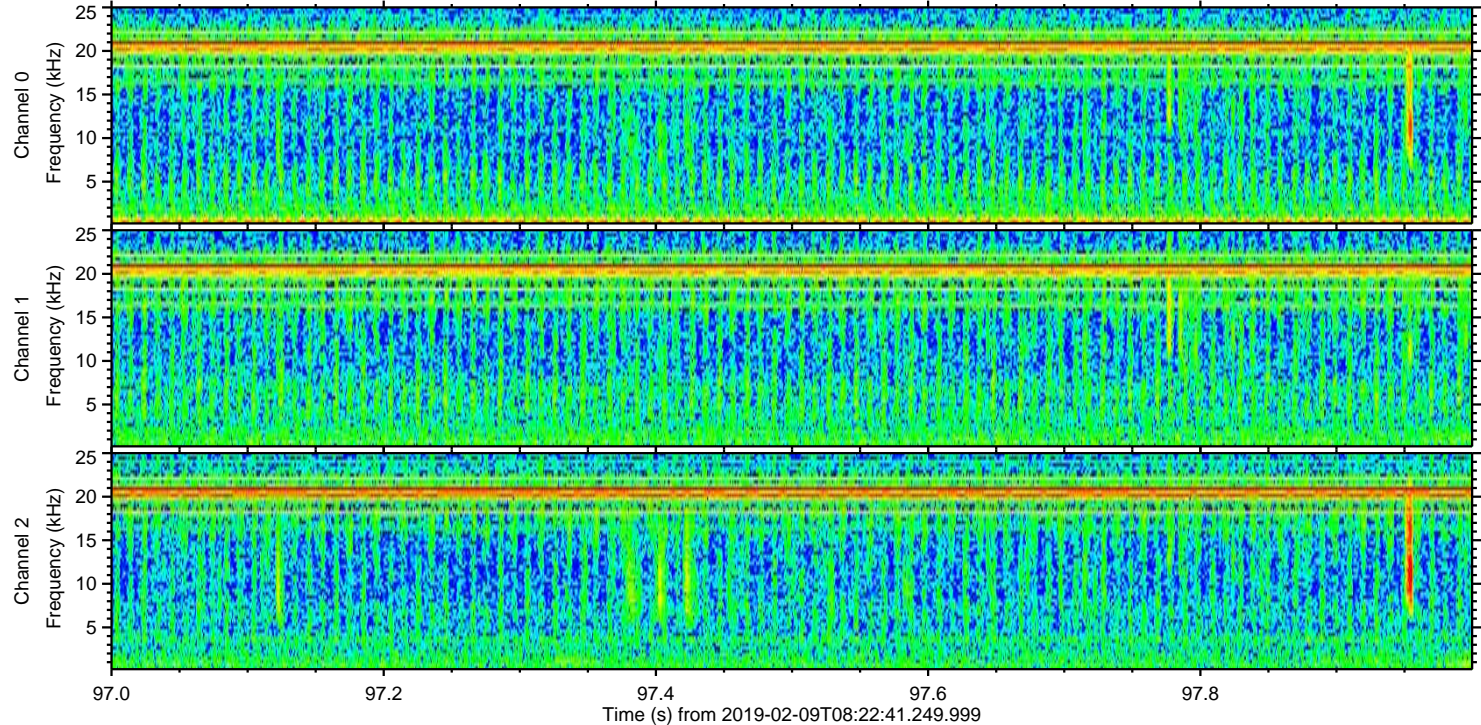
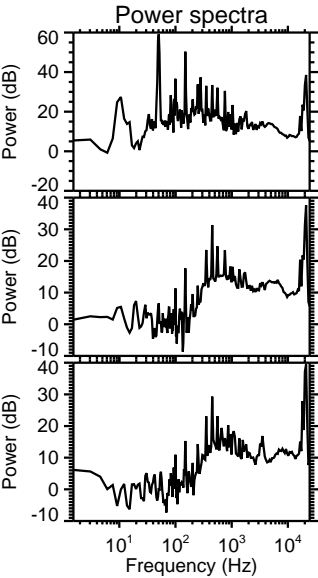
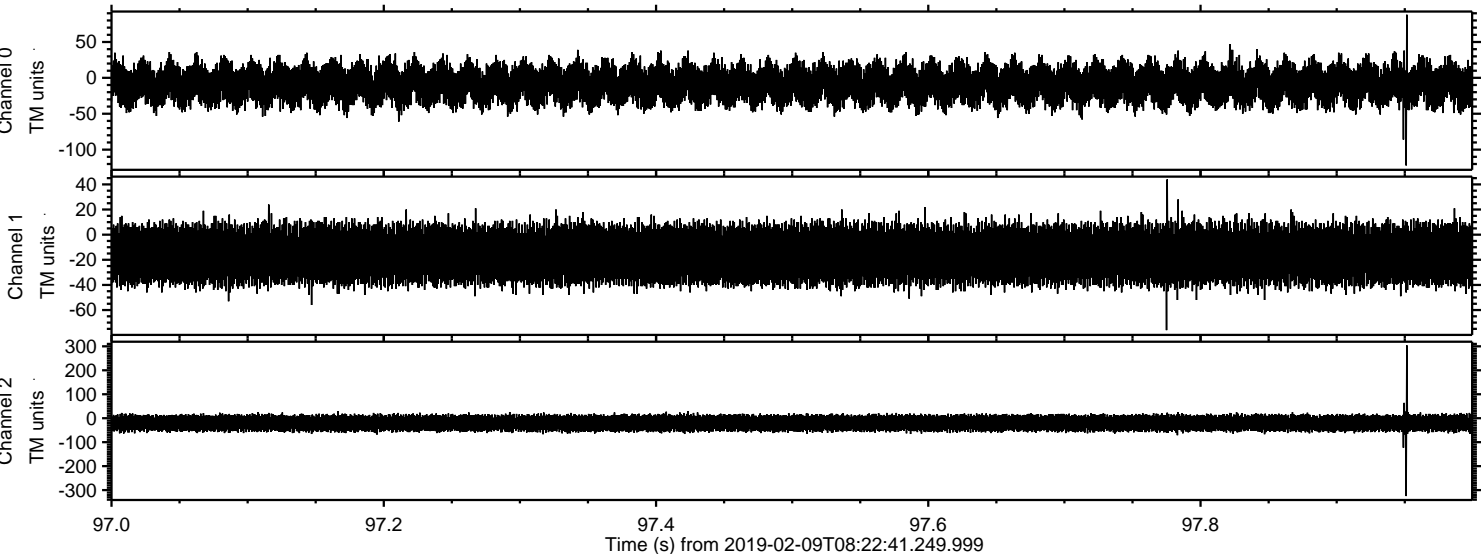


Processed Sat Feb 9 09:30:57 2019 by ELM ver.2012-10-06 from 001\_\_elm20190209\_082240\_\_dat00.bin



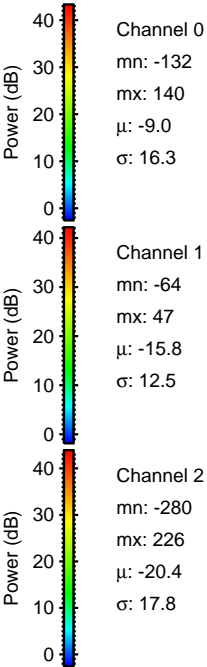
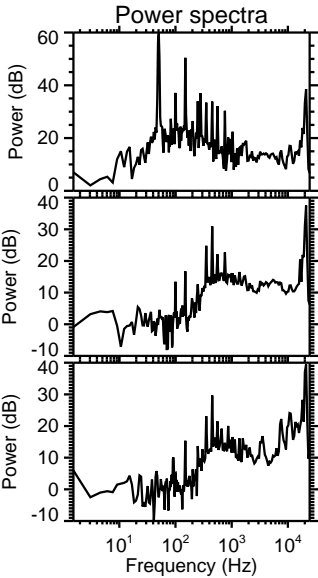
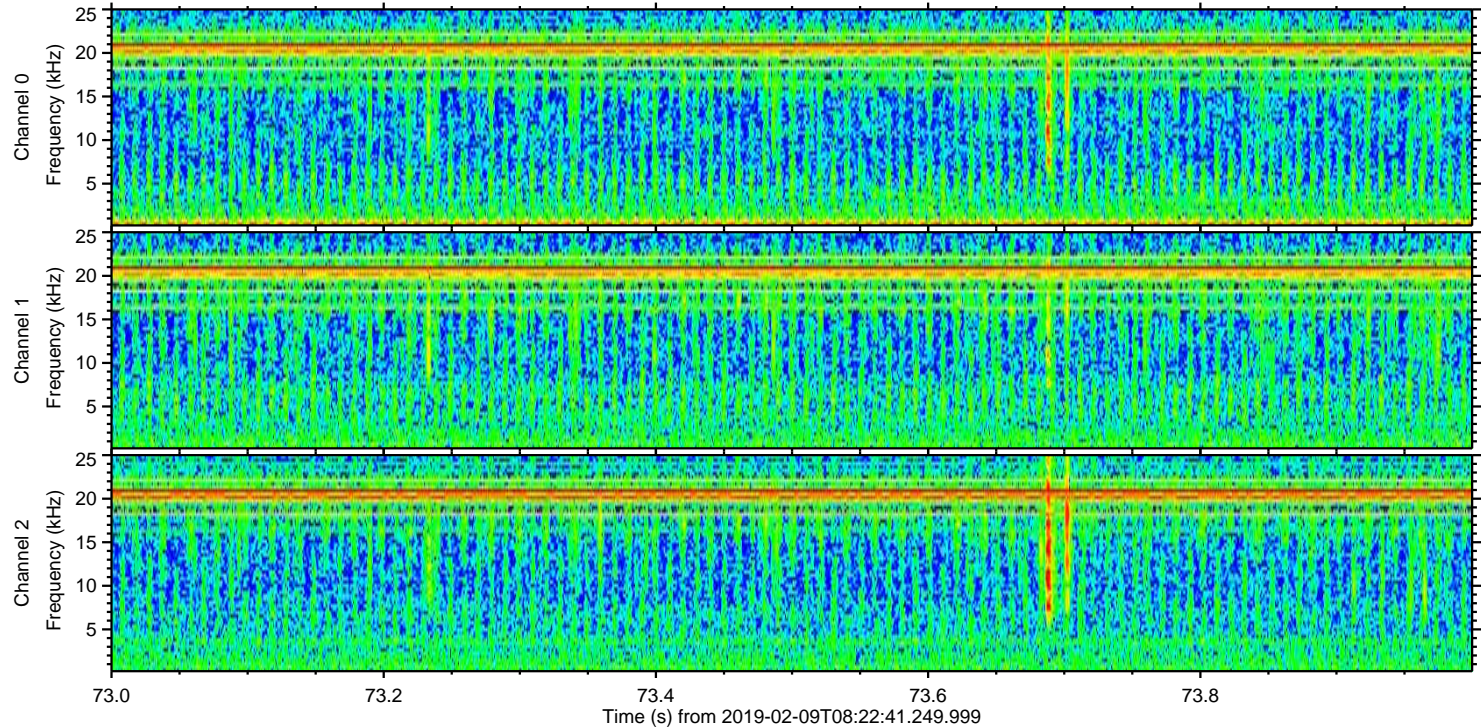
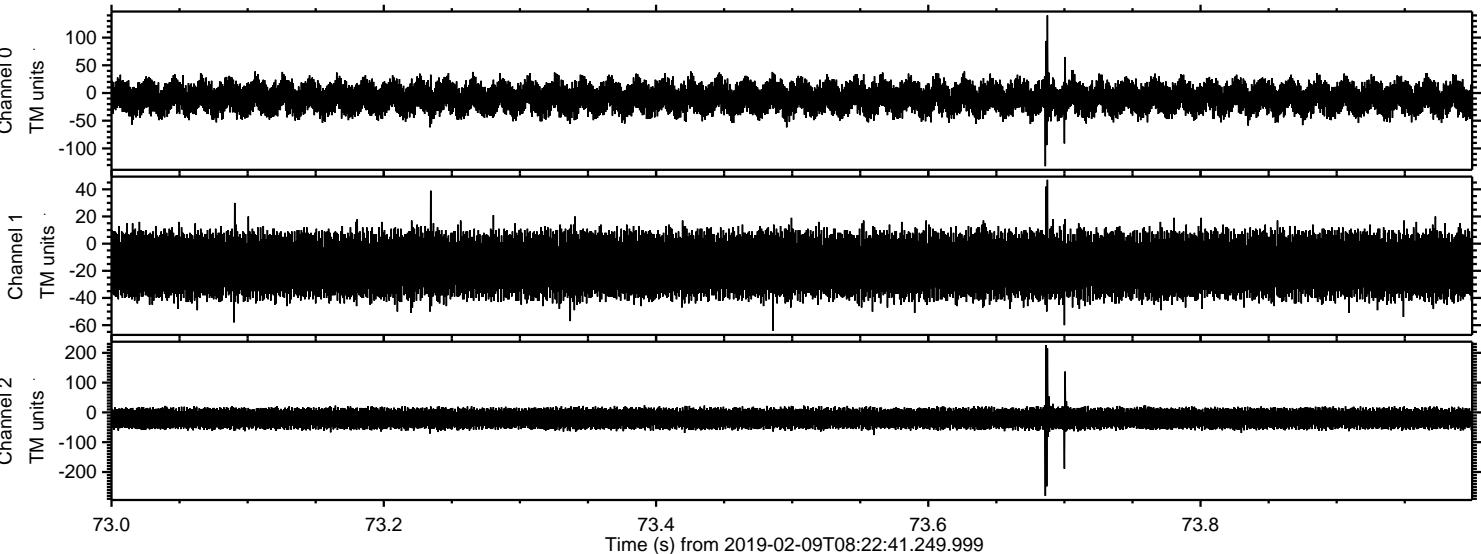


Processed Sat Feb 9 09:30:58 2019 by ELM ver.2012-10-06 from 001\_\_elm20190209\_082240\_\_dat00.bin





Processed Sat Feb 9 09:30:58 2019 by ELM ver.2012-10-06 from 001\_\_elm20190209\_082240\_\_dat00.bin





Processed Sat Feb 9 09:30:59 2019 by ELM ver.2012-10-06 from 001\_\_elm20190209\_082240\_\_dat00.bin

