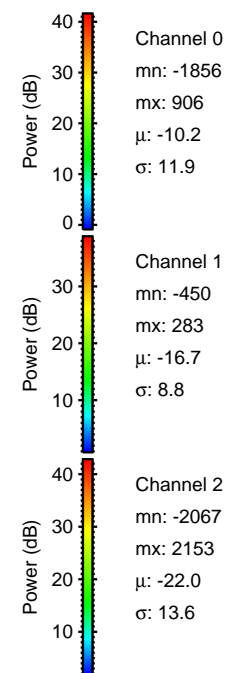
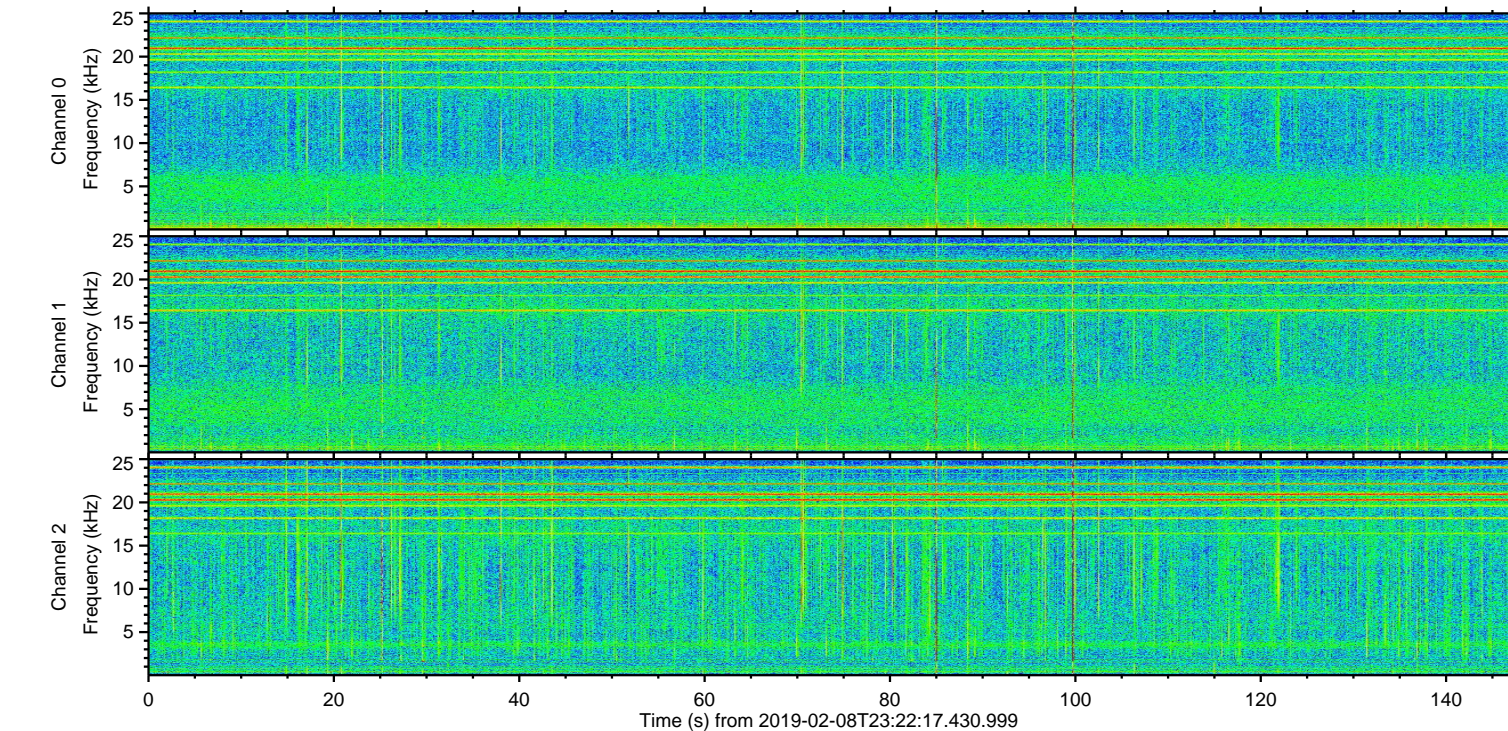
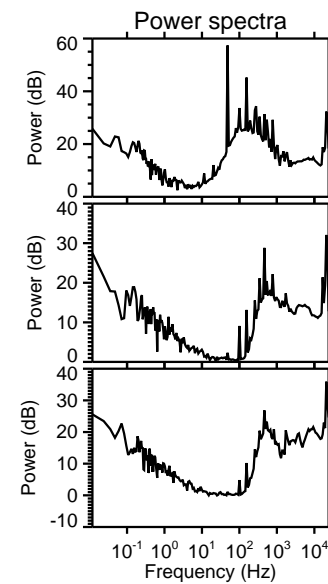
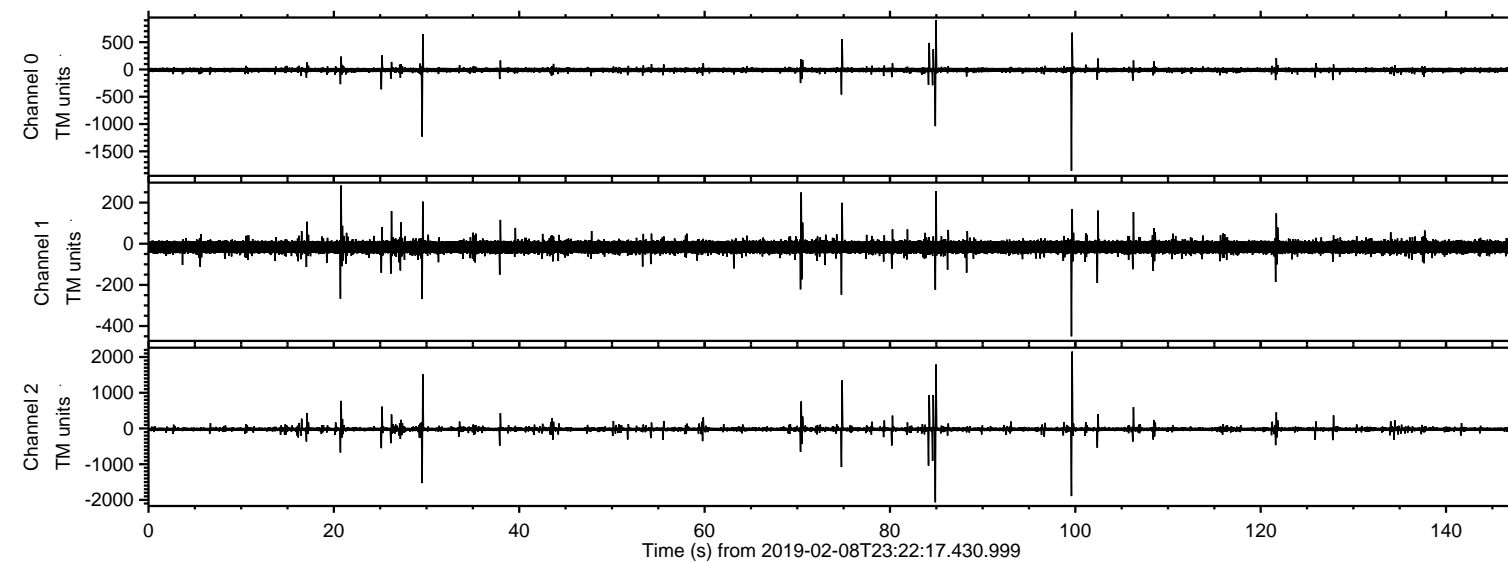


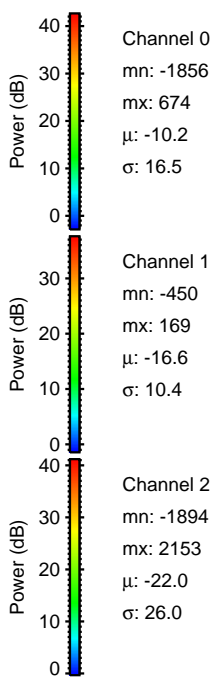
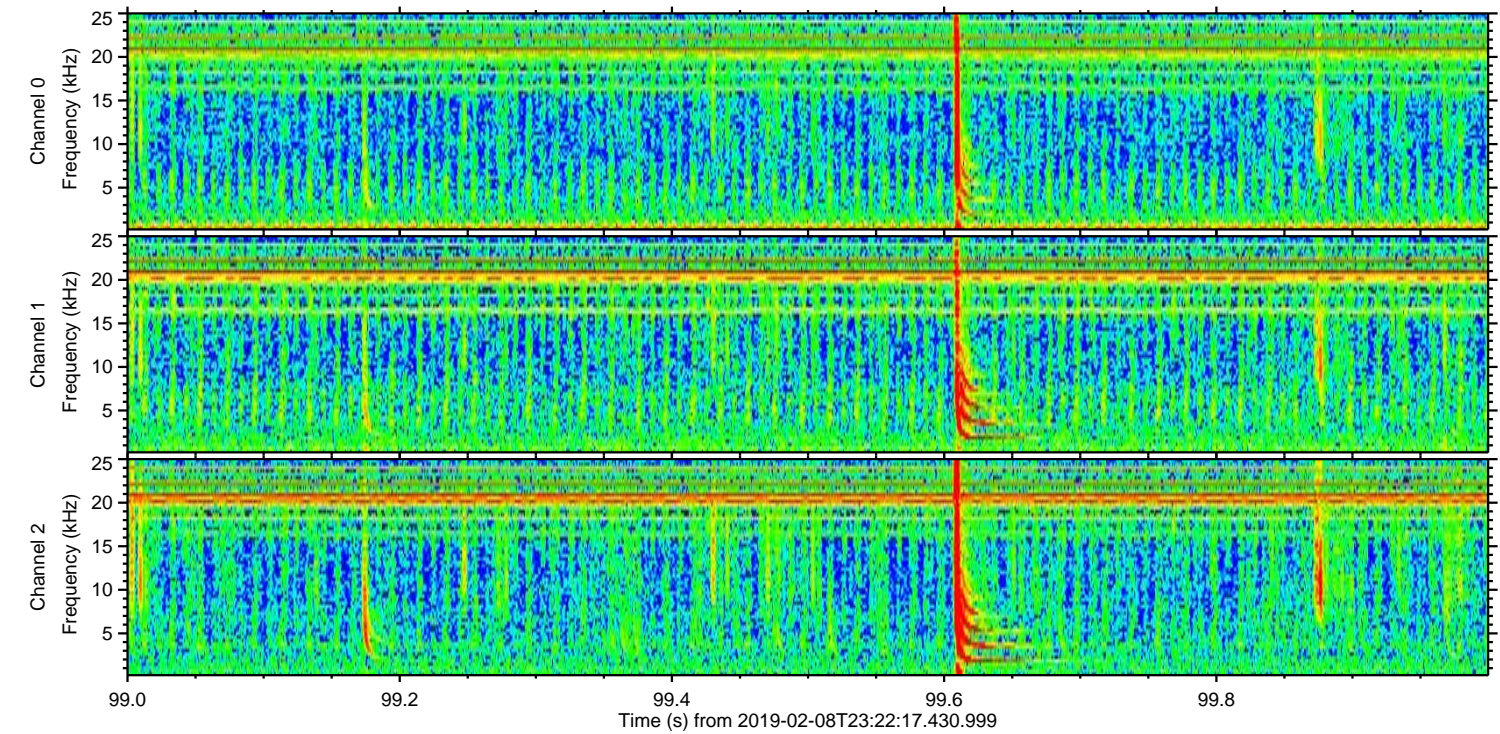
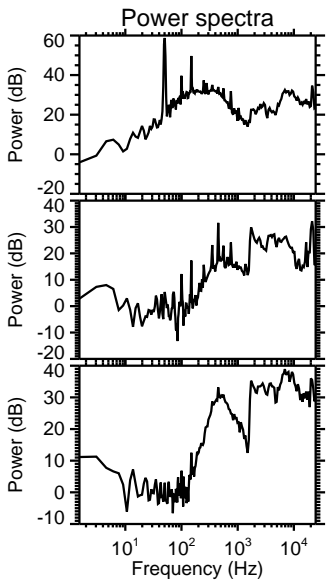
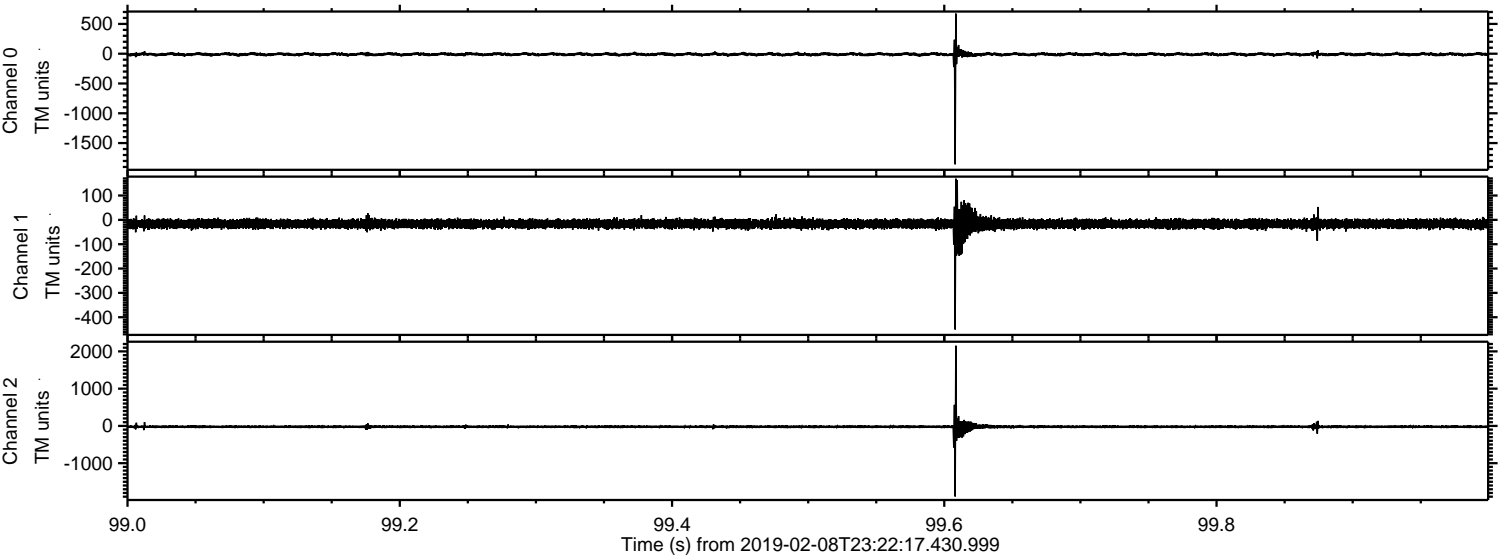
ELMAVAN 3D WAVEFORMS (Measured data sampled at 50 kHz) 51000 packets of 144 samples from 2019-02-08T23:22:17.430.999.

Processed Sat Feb 9 00:29:39 2019 by ELM ver.2012-10-06 from 001\_\_elm20190208\_232216\_\_dat00.bin

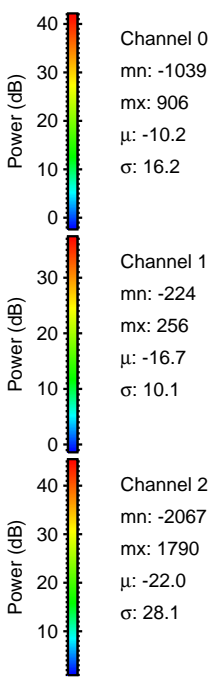
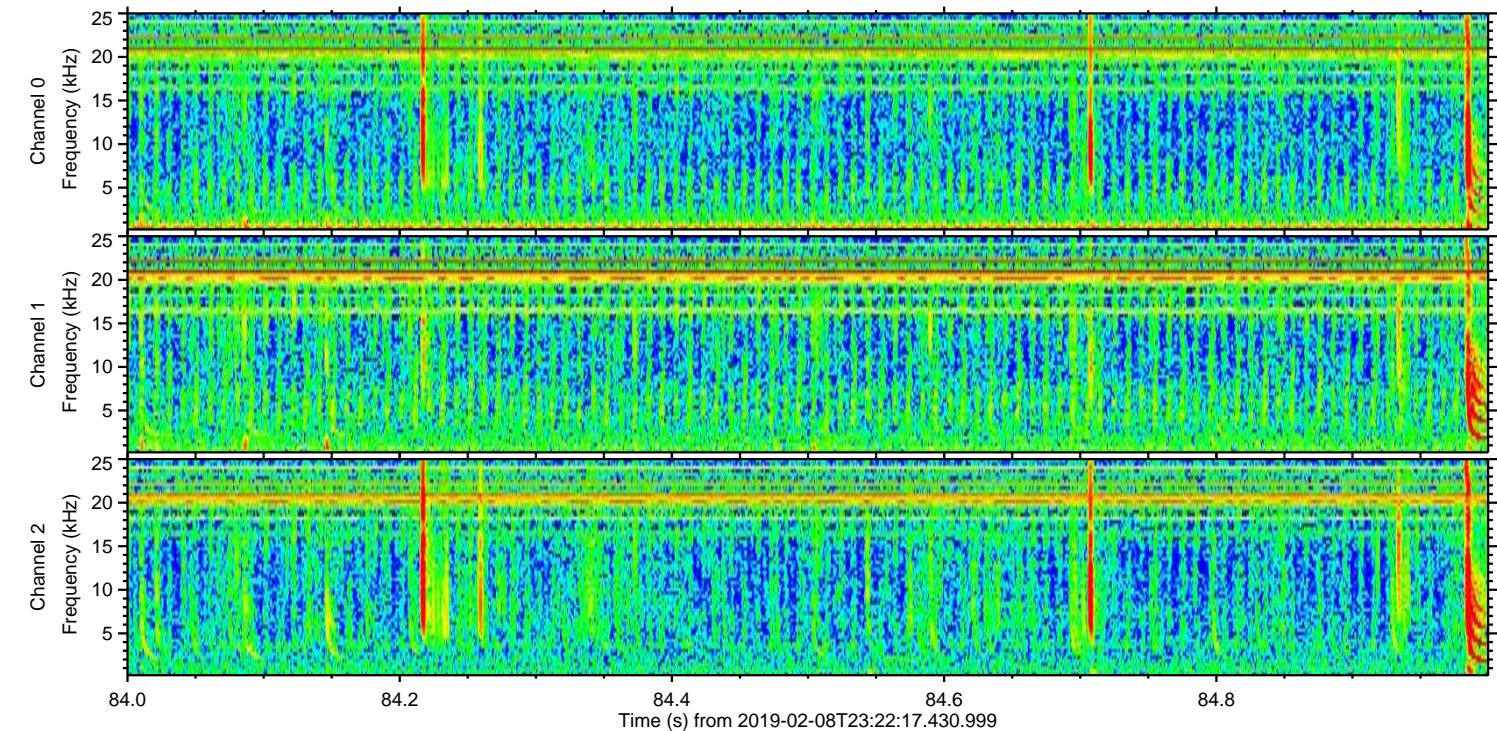
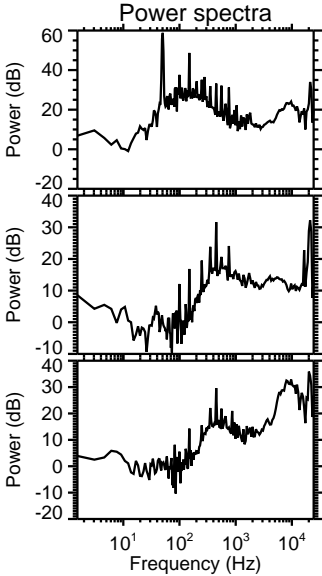
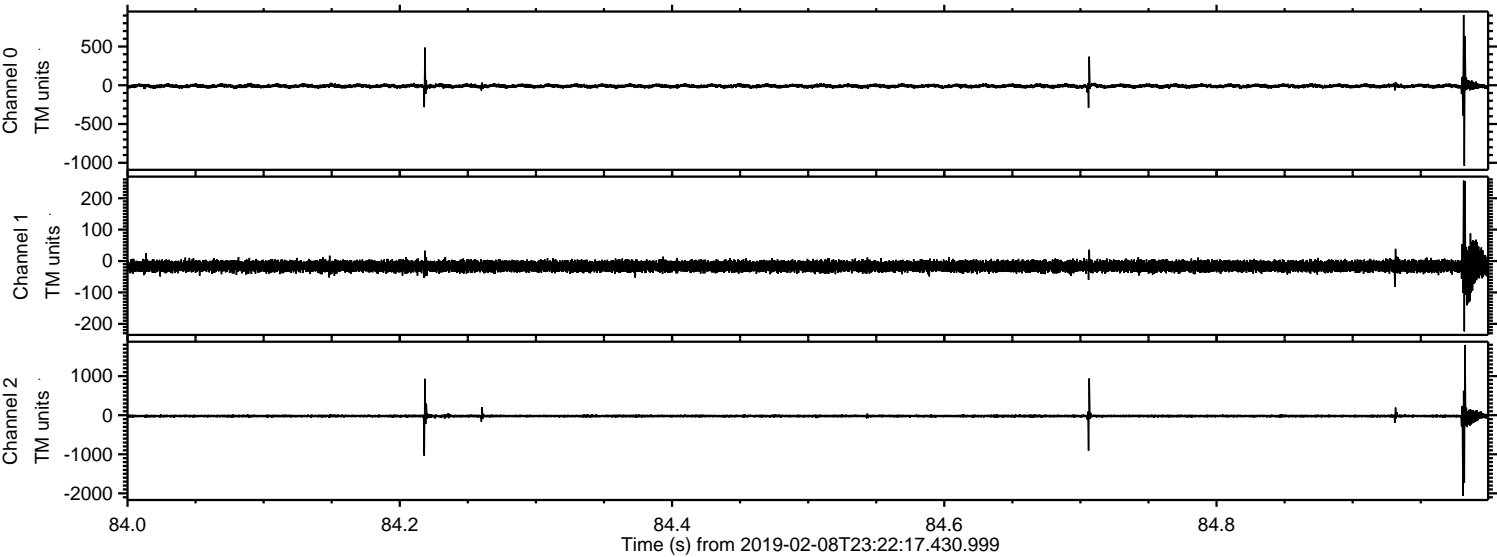


ELMAVAN 3D WAVEFORMS (Measured data sampled at 50 kHz) 51000 packets of 144 samples from 2019-02-08T23:22:17.430.999. Part 100/147

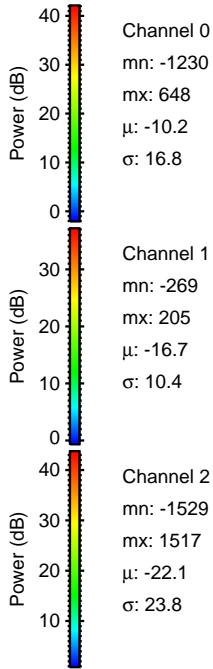
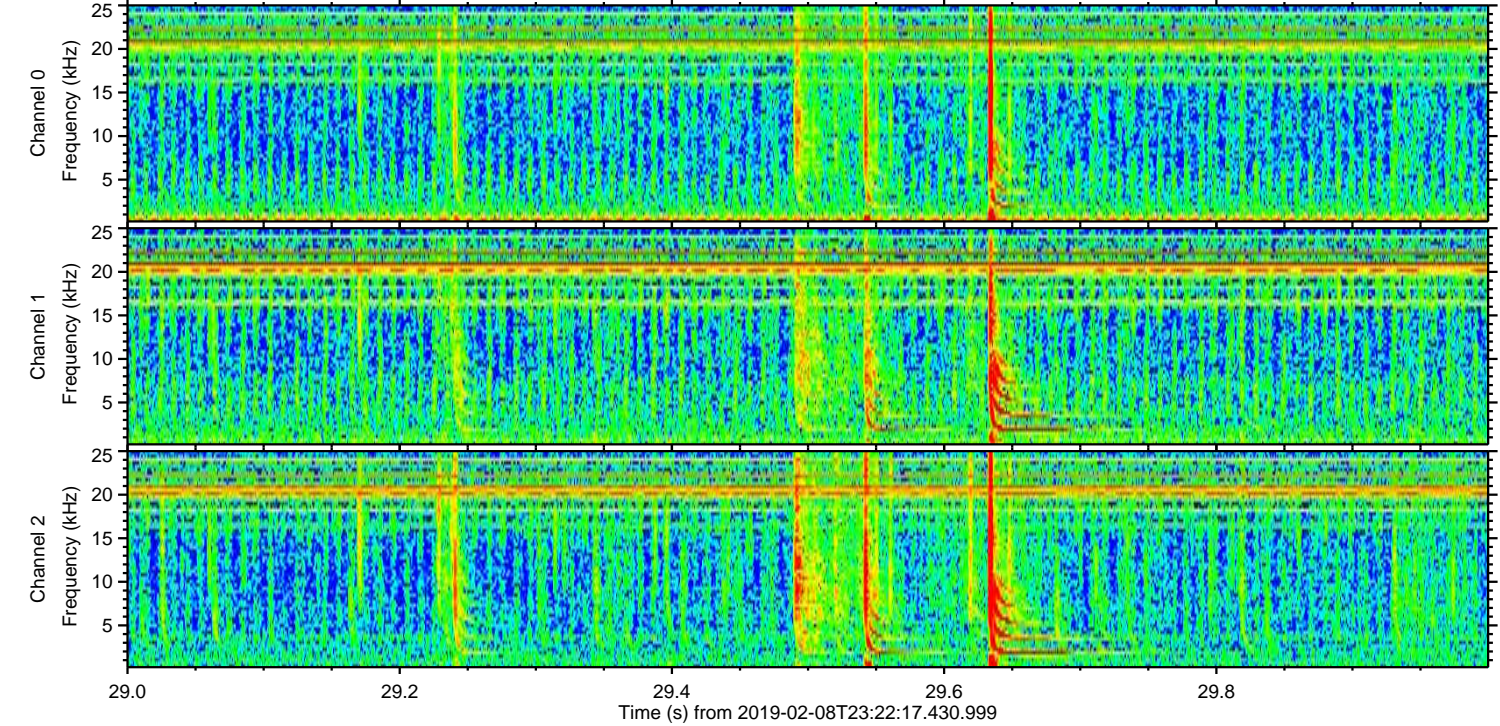
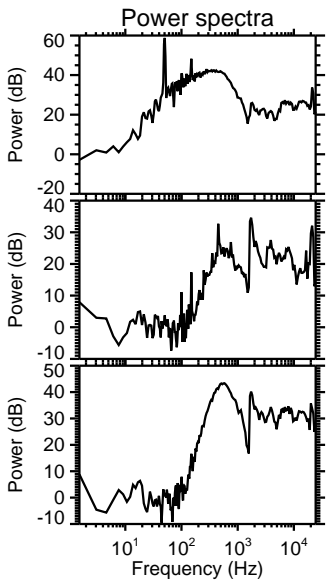
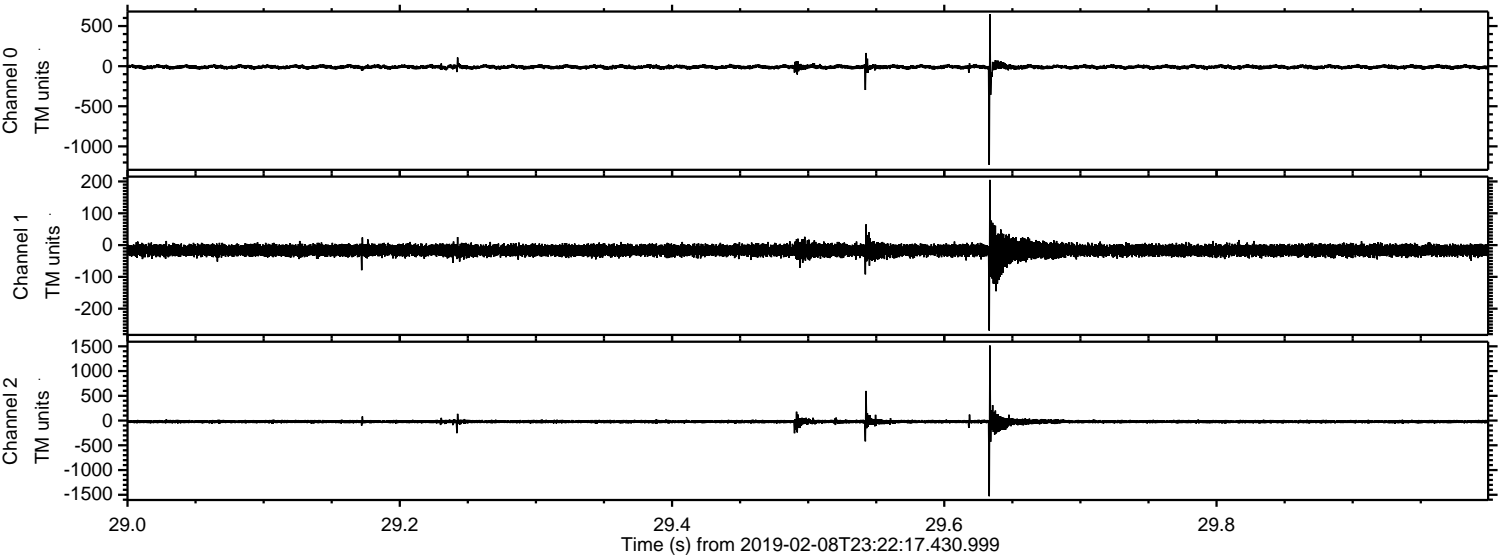
Processed Sat Feb 9 00:29:45 2019 by ELM ver.2012-10-06 from 001\_\_elm20190208\_232216\_\_dat00.bin



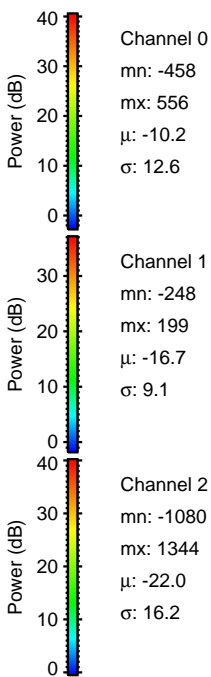
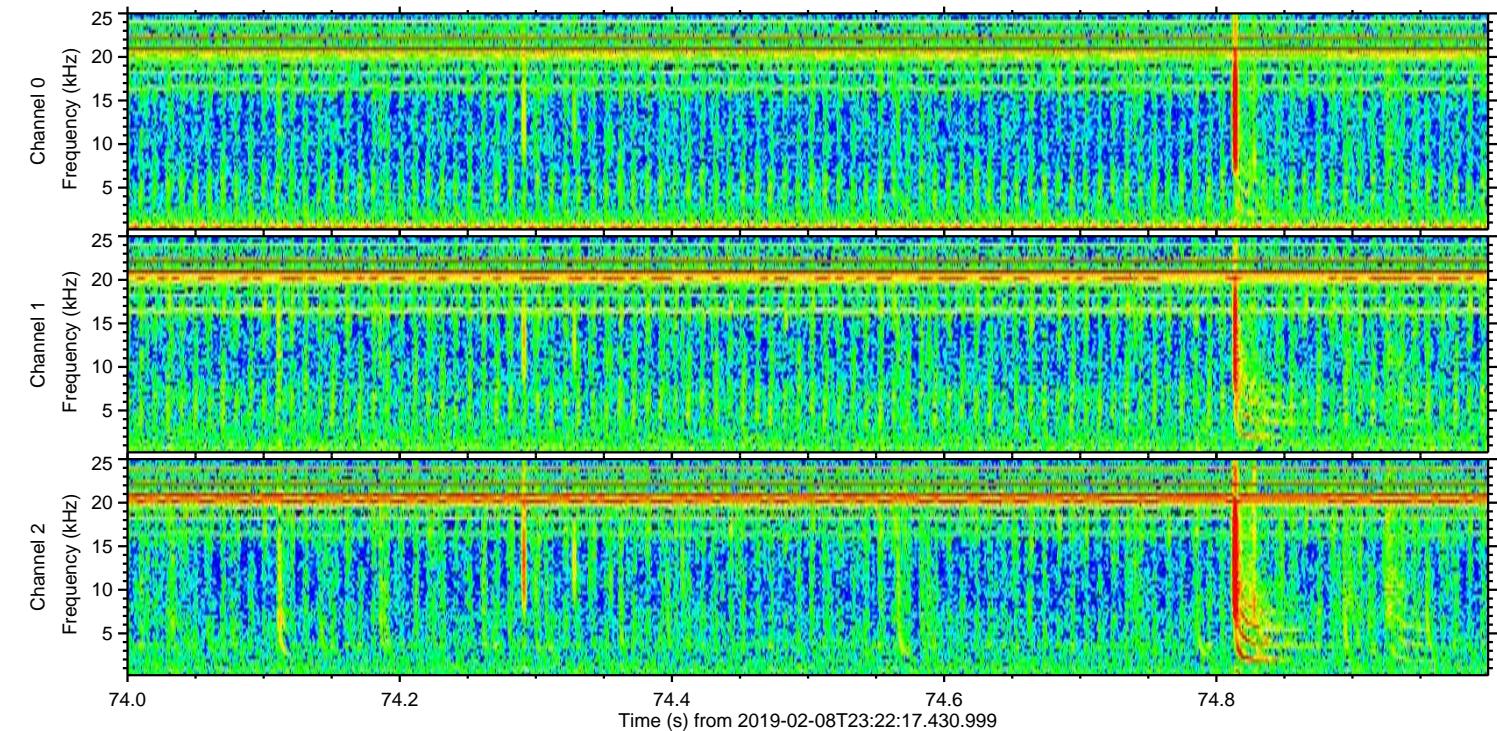
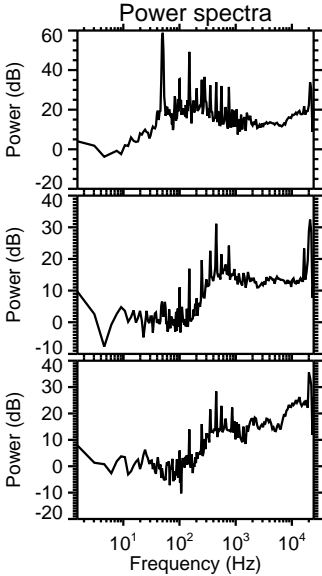
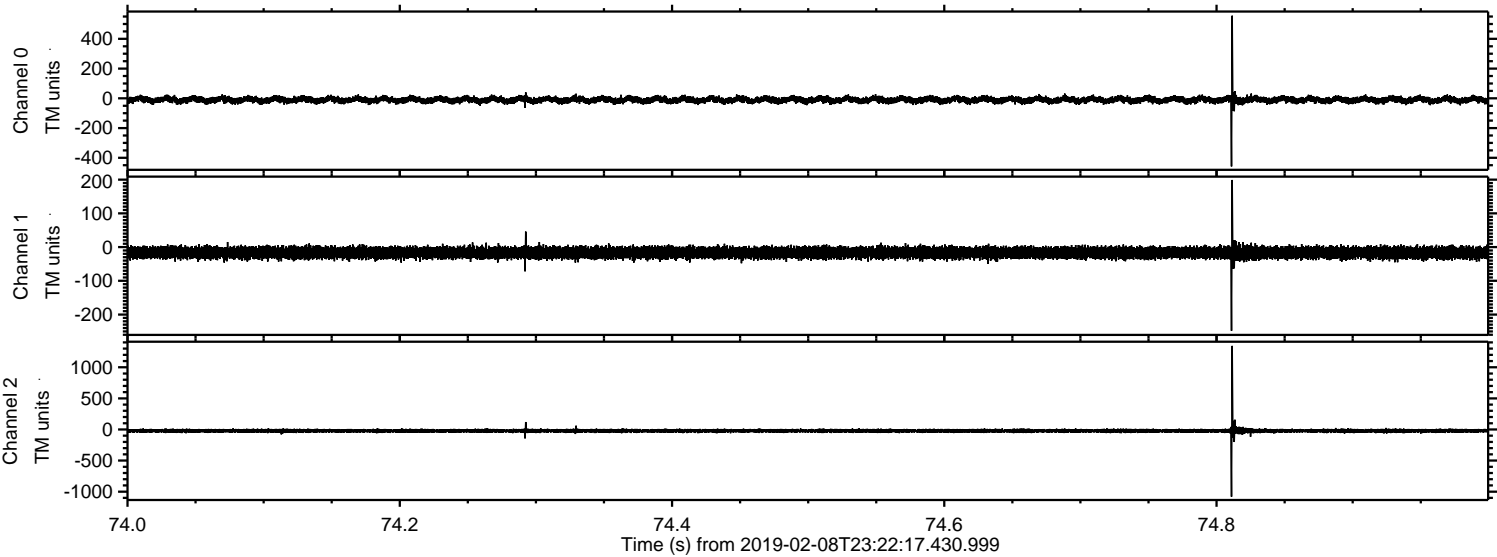
Processed Sat Feb 9 00:29:45 2019 by ELM ver.2012-10-06 from 001\_\_elm20190208\_232216\_\_dat00.bin



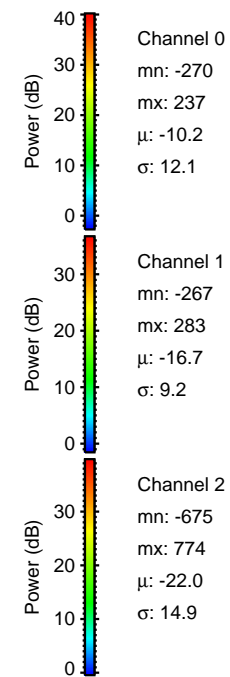
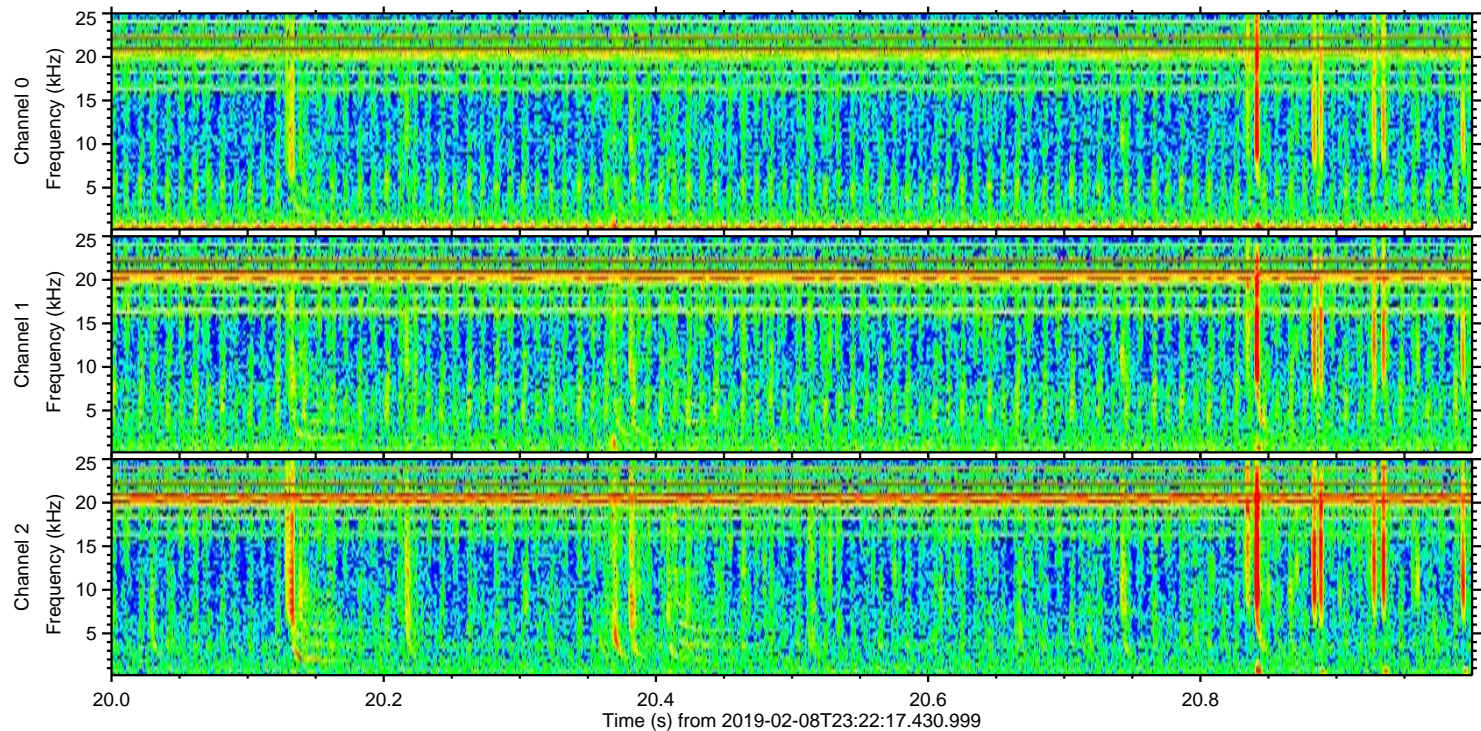
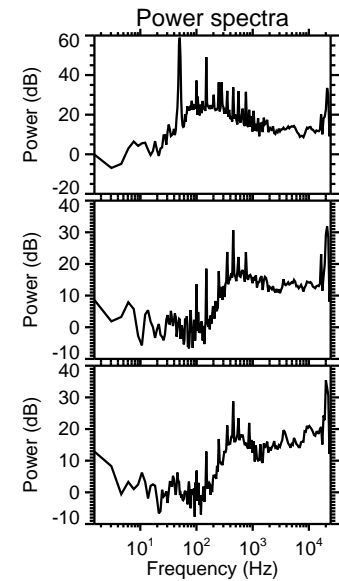
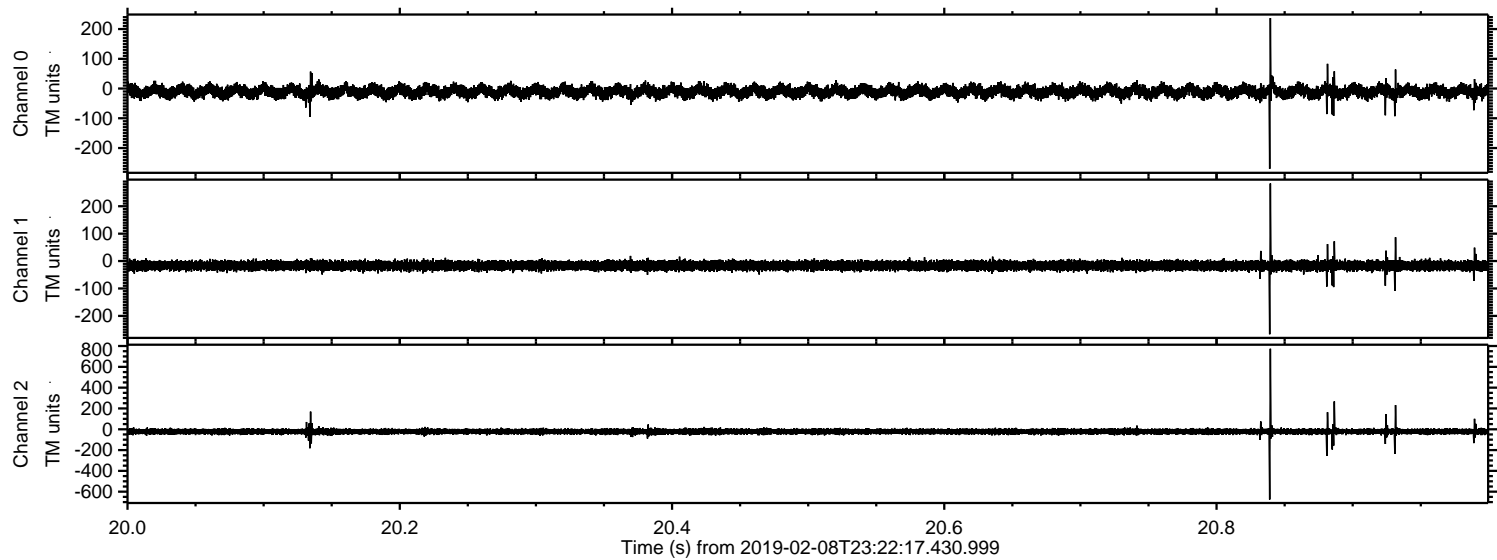
Processed Sat Feb 9 00:29:46 2019 by ELM ver.2012-10-06 from 001\_\_elm20190208\_232216\_\_dat00.bin



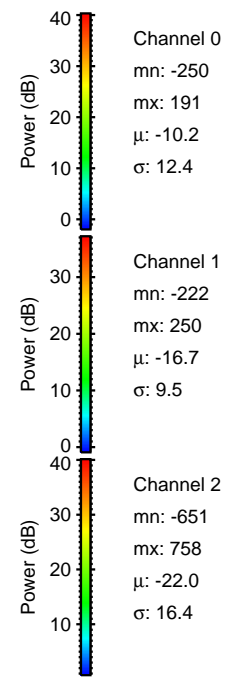
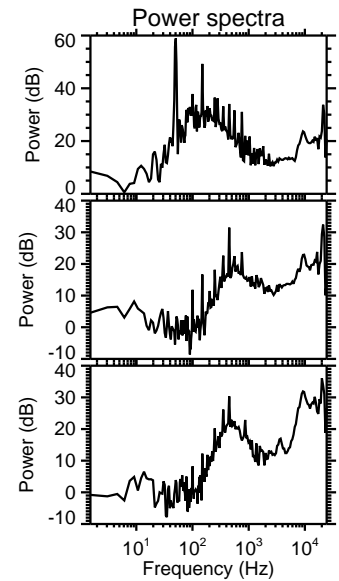
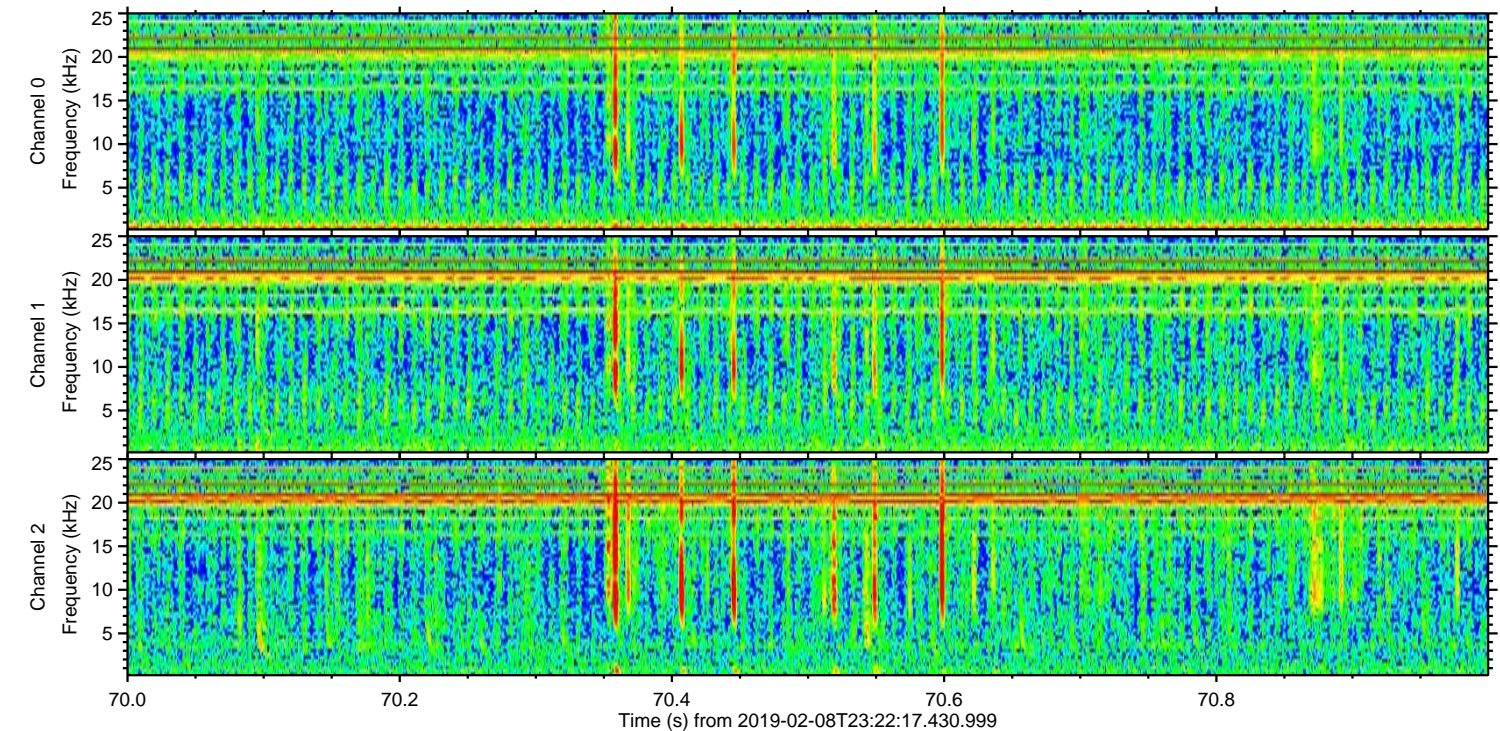
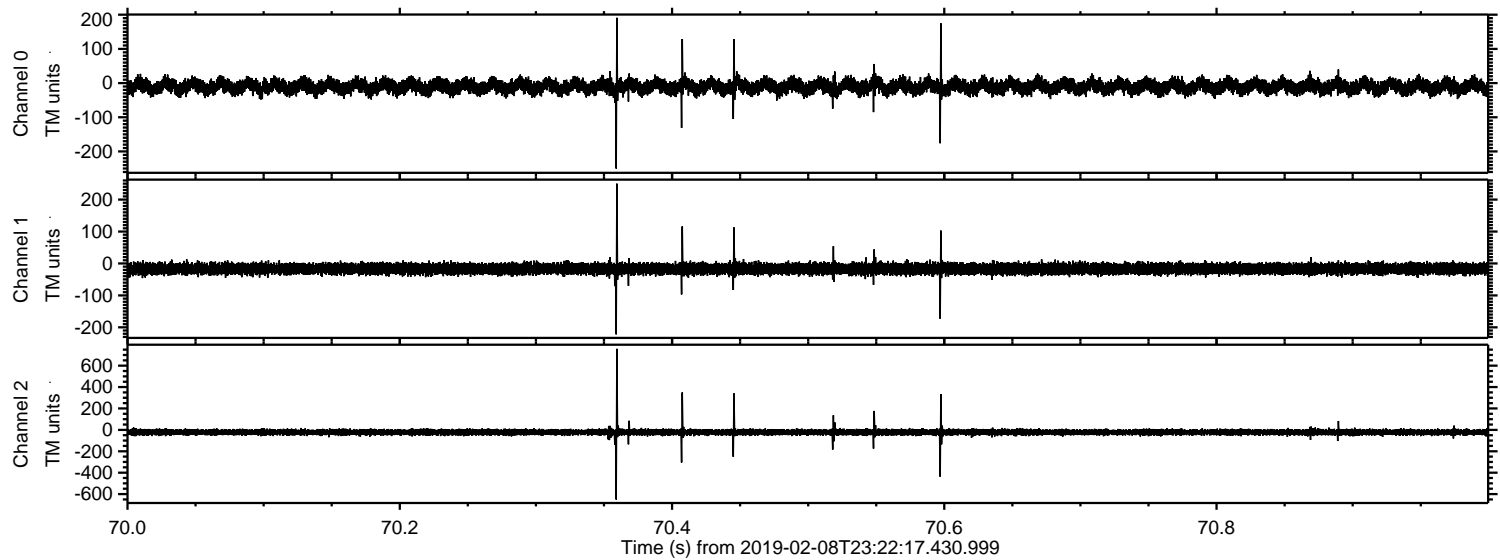
Processed Sat Feb 9 00:29:47 2019 by ELM ver.2012-10-06 from 001\_\_elm20190208\_232216\_\_dat00.bin



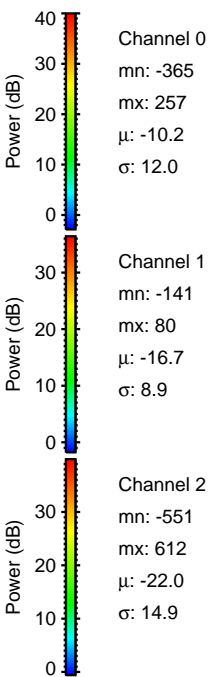
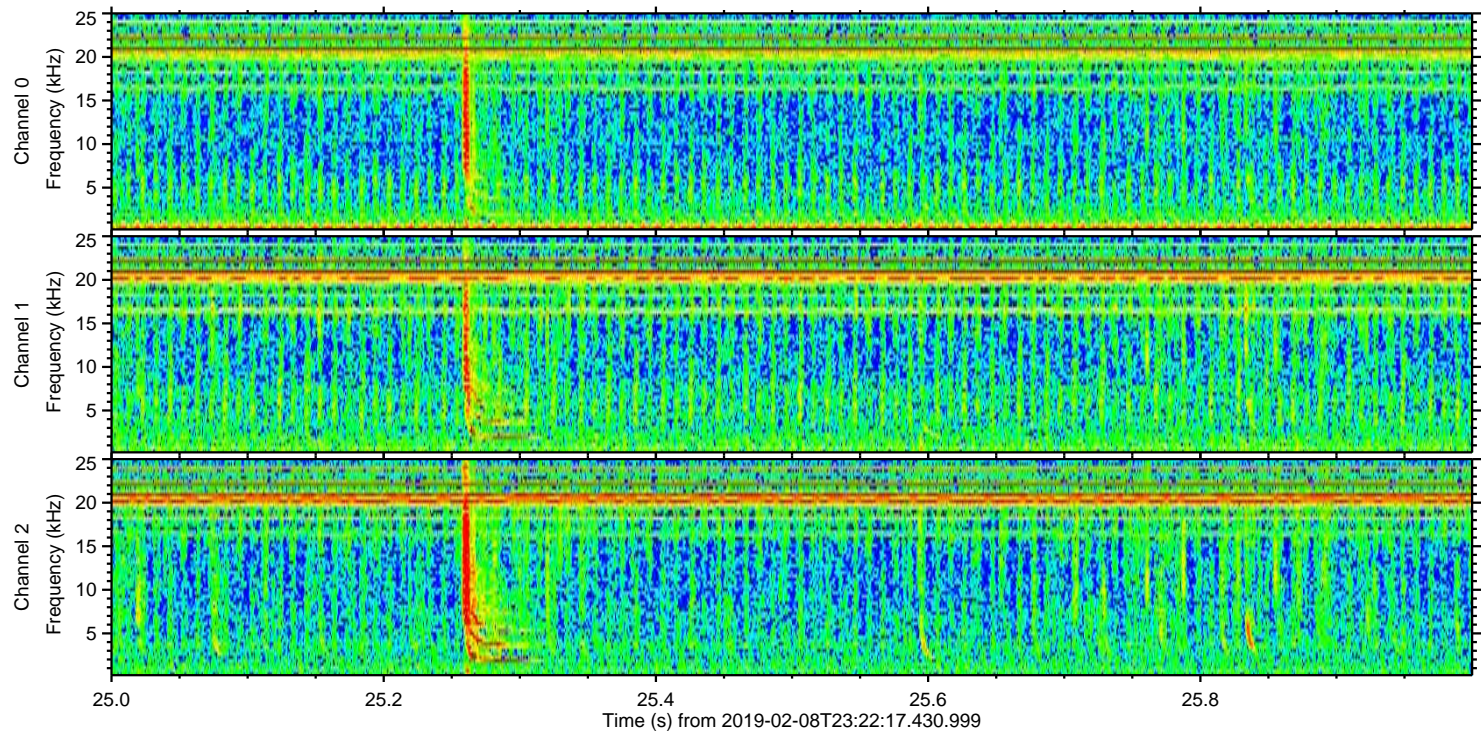
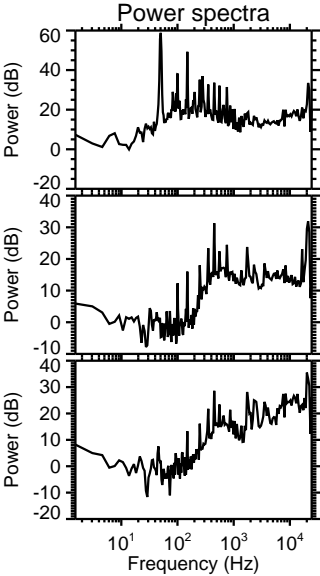
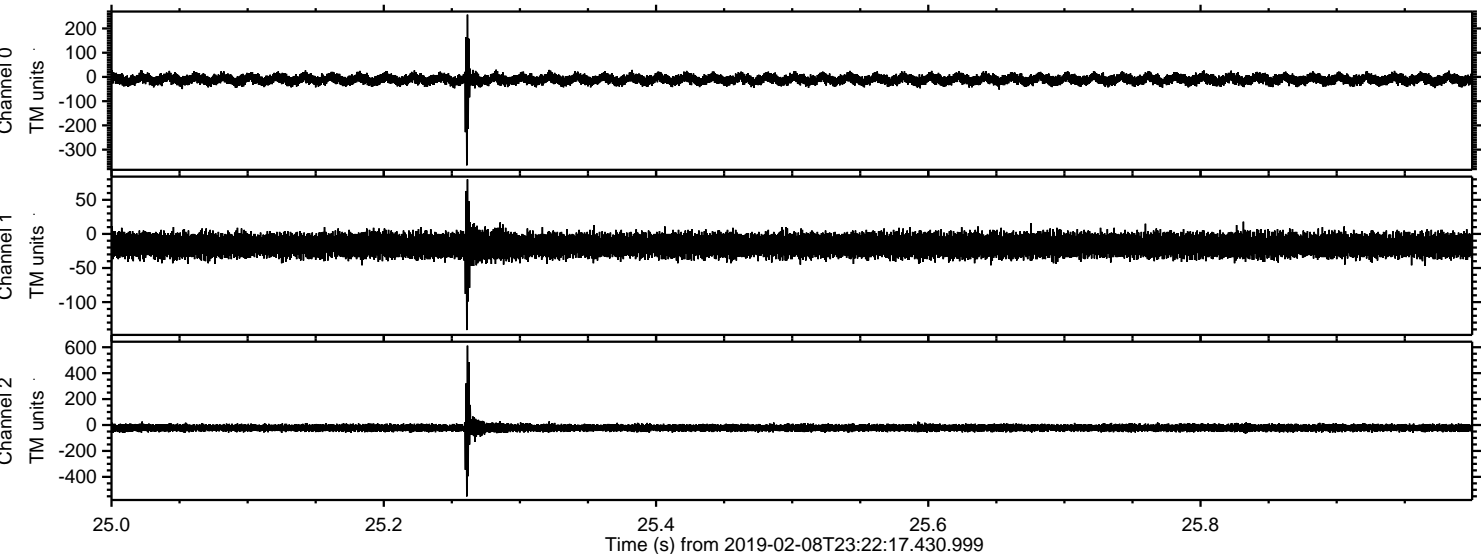
Processed Sat Feb 9 00:29:48 2019 by ELM ver.2012-10-06 from 001\_\_elm20190208\_232216\_\_dat00.bin



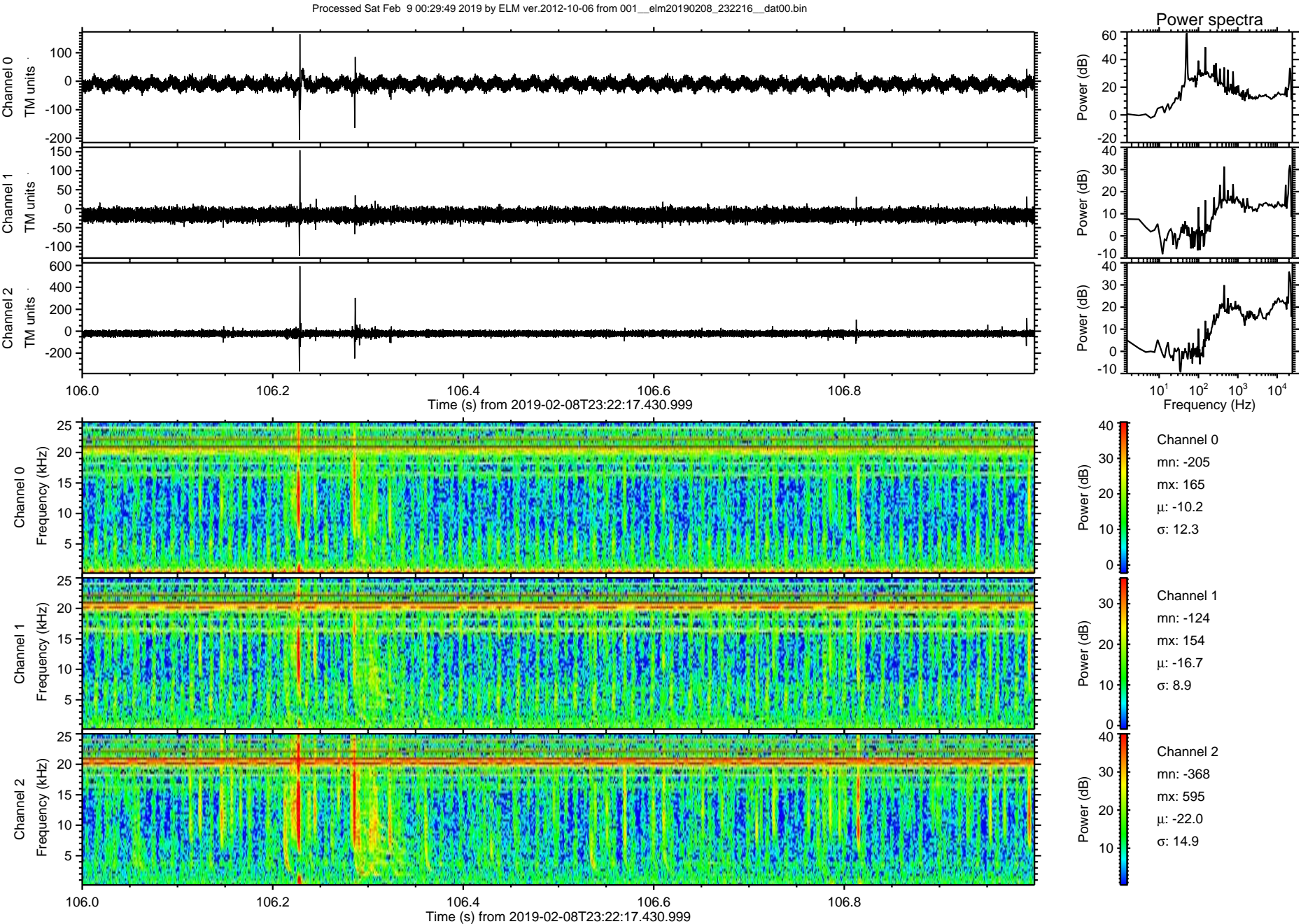
Processed Sat Feb 9 00:29:48 2019 by ELM ver.2012-10-06 from 001\_\_elm20190208\_232216\_\_dat00.bin



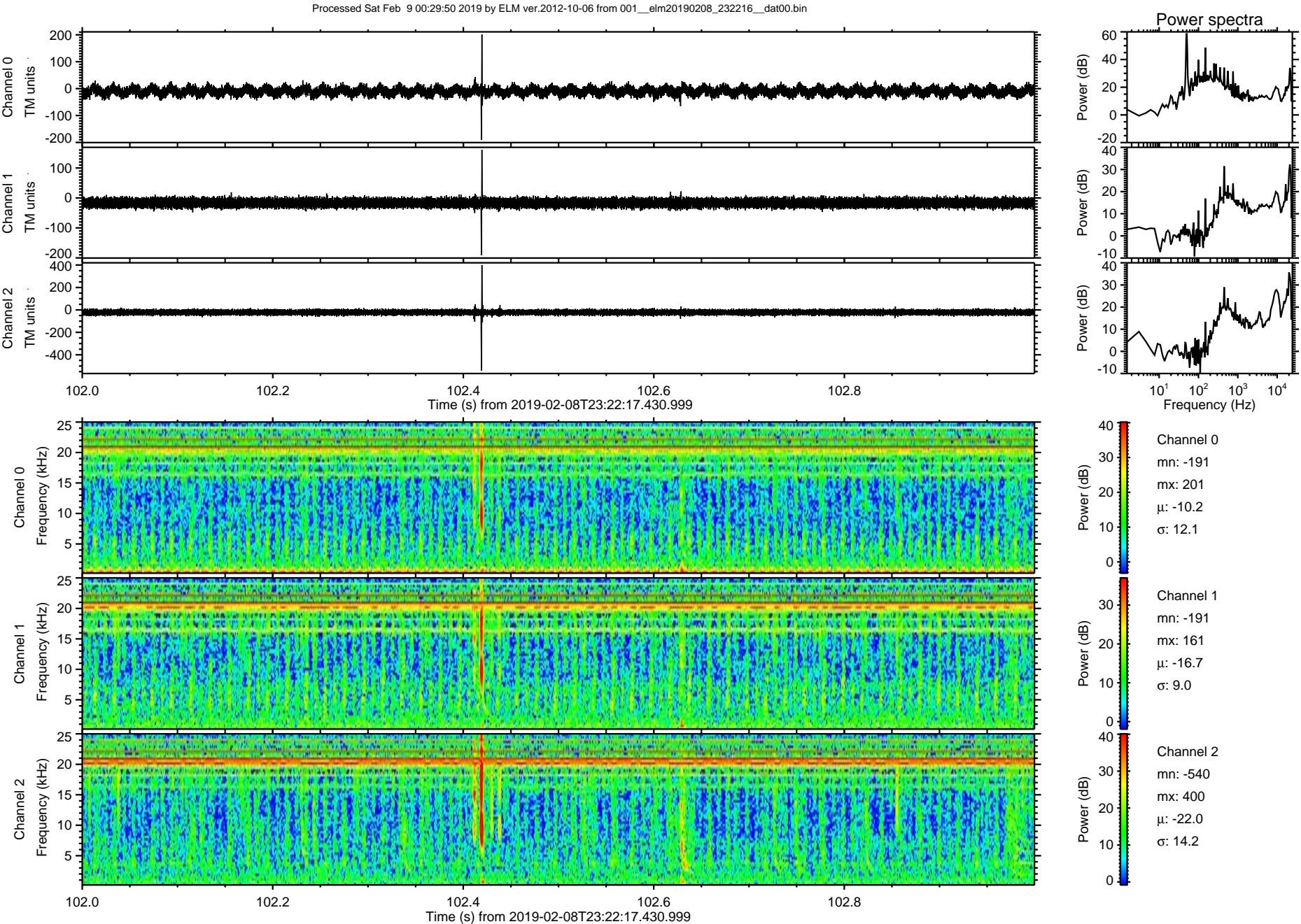
Processed Sat Feb 9 00:29:49 2019 by ELM ver.2012-10-06 from 001\_\_elm20190208\_232216\_\_dat00.bin



ELMAVAN 3D WAVEFORMS (Measured data sampled at 50 kHz) 51000 packets of 144 samples from 2019-02-08T23:22:17.430.999. Part 107/147



ELMAVAN 3D WAVEFORMS (Measured data sampled at 50 kHz) 51000 packets of 144 samples from 2019-02-08T23:22:17.430.999. Part 103/147



Processed Sat Feb 9 00:29:51 2019 by ELM ver.2012-10-06 from 001\_\_elm20190208\_232216\_\_dat00.bin

