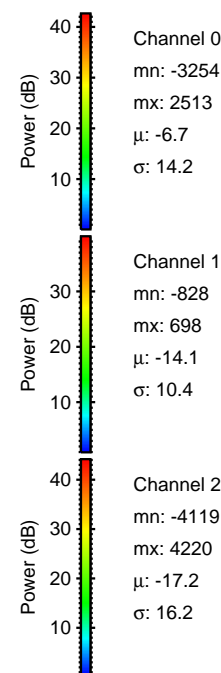
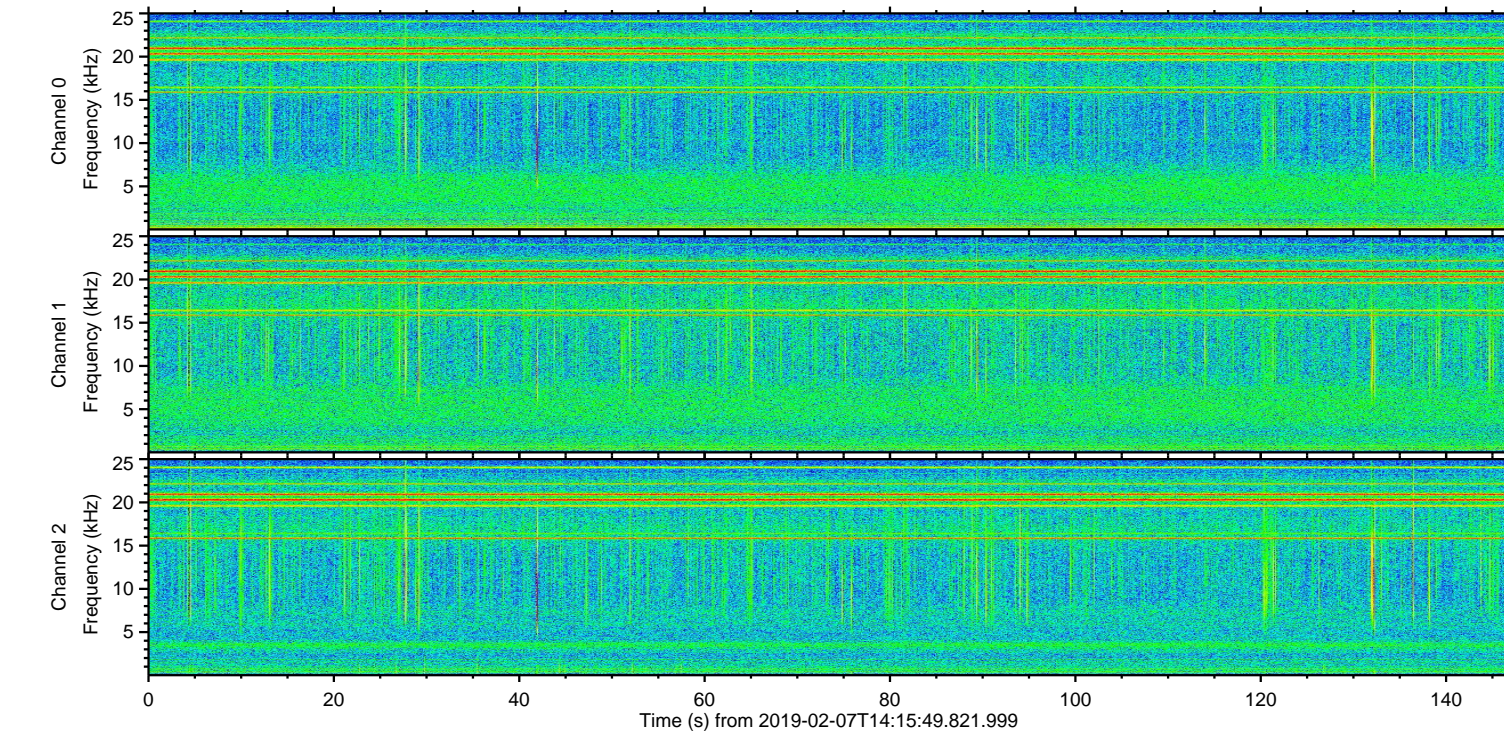
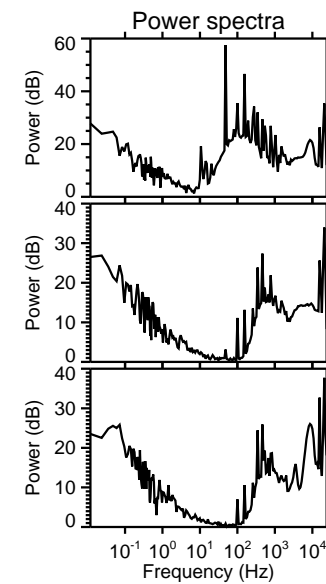
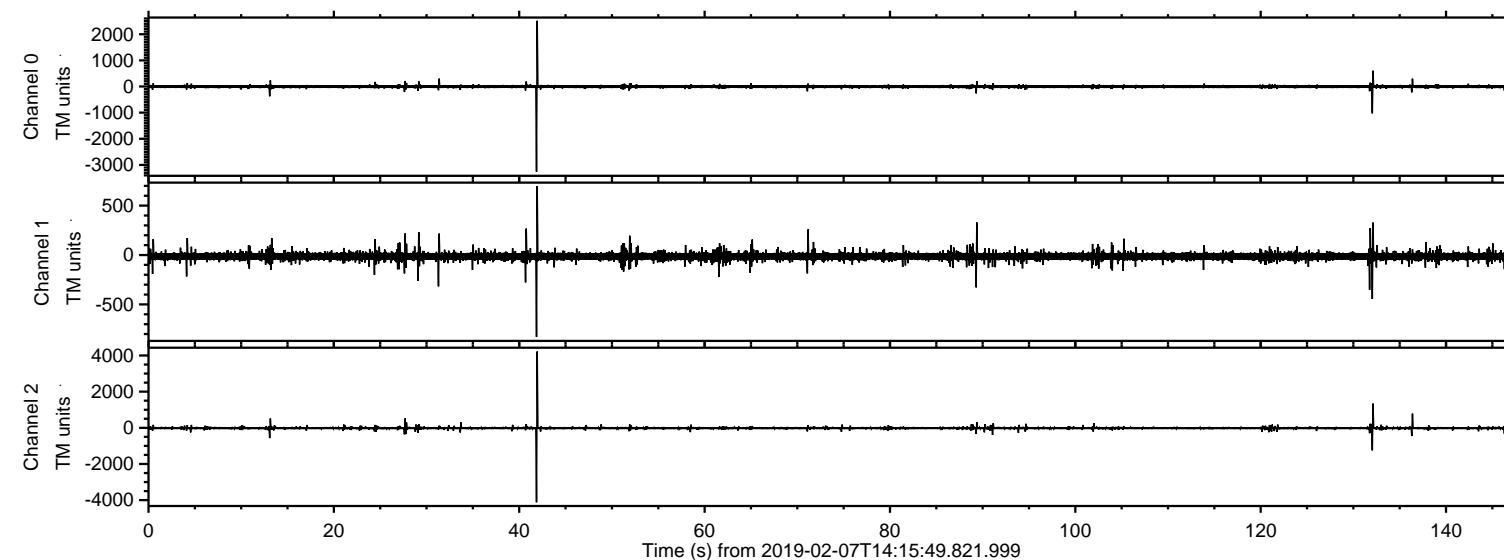
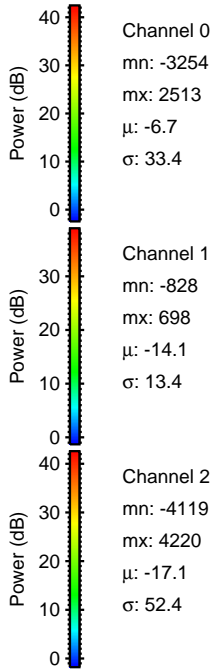
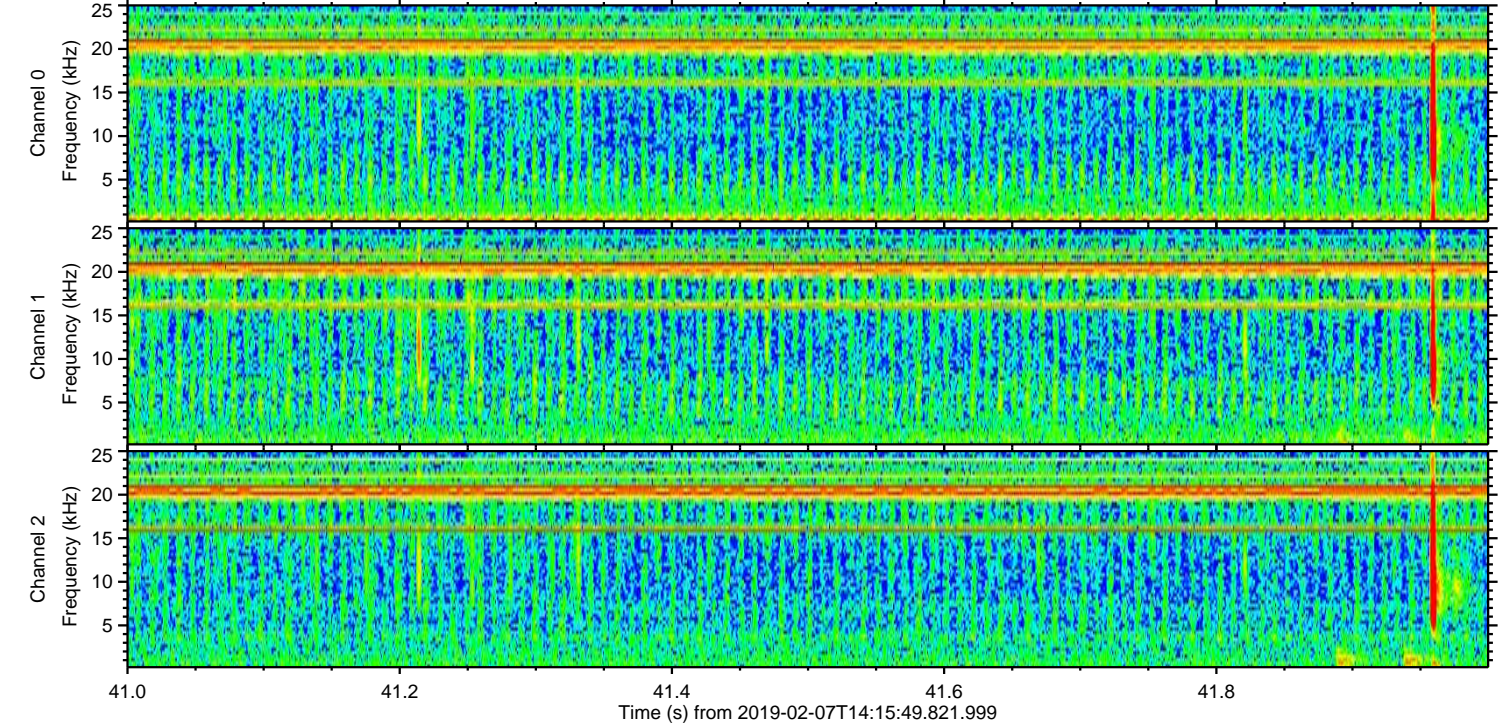
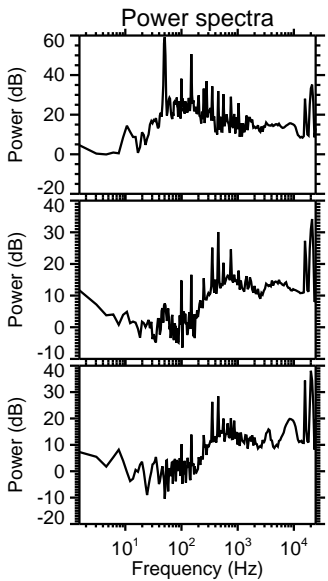
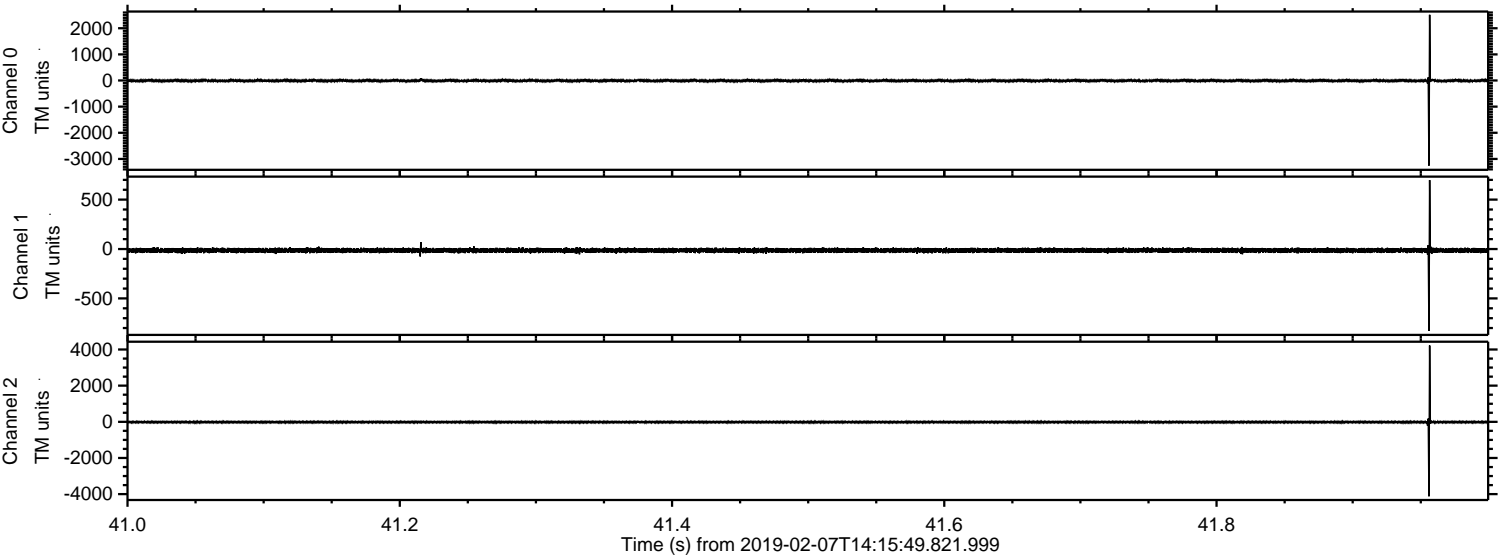


# ELMAVAN 3D WAVEFORMS (Measured data sampled at 50 kHz) 51000 packets of 144 samples from 2019-02-07T14:15:49.821.999.

Processed Thu Feb 7 15:23:20 2019 by ELM ver.2012-10-06 from 001\_\_elm20190207\_141548\_\_dat00.bin

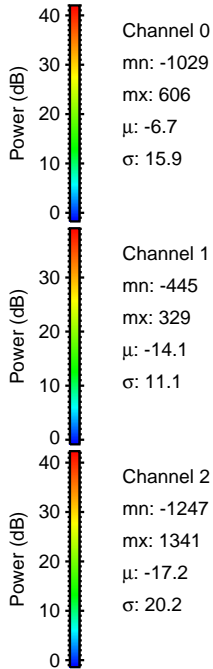
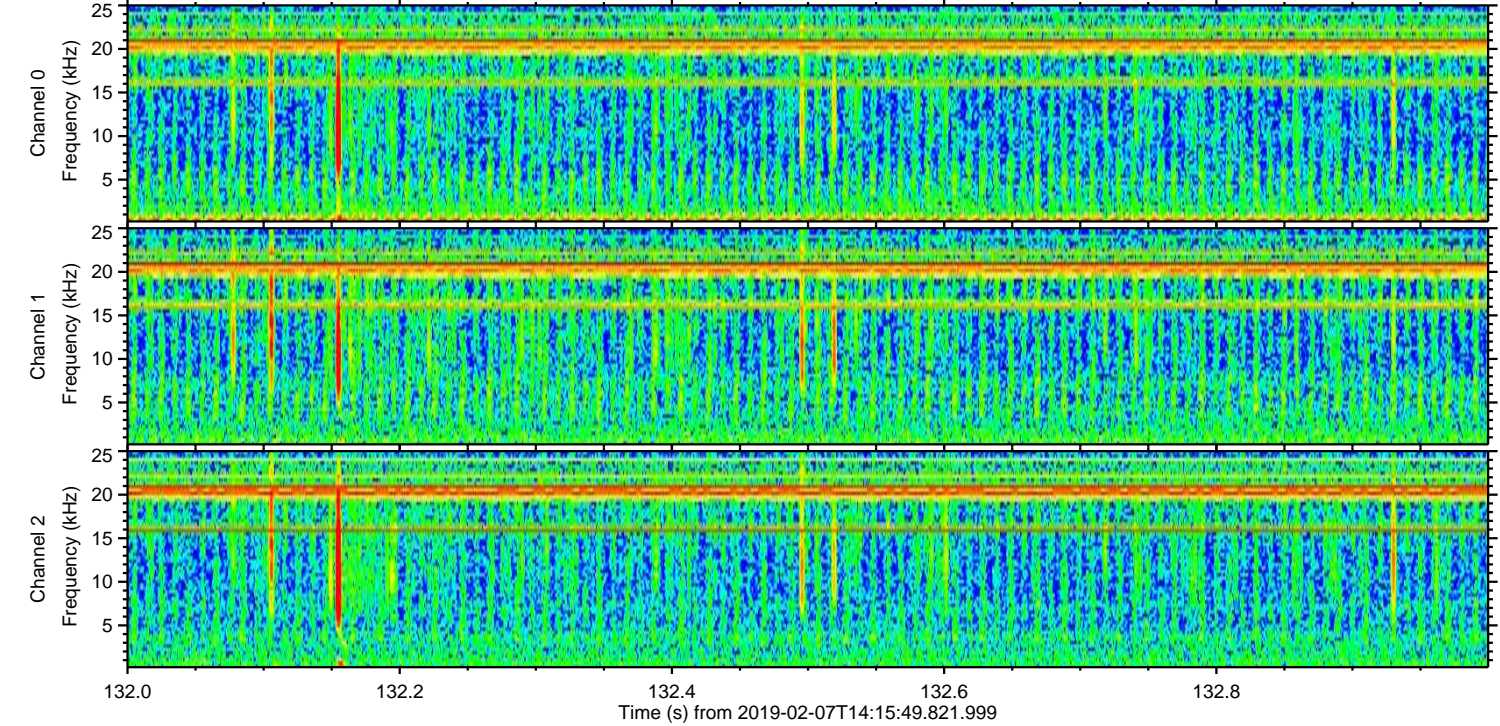
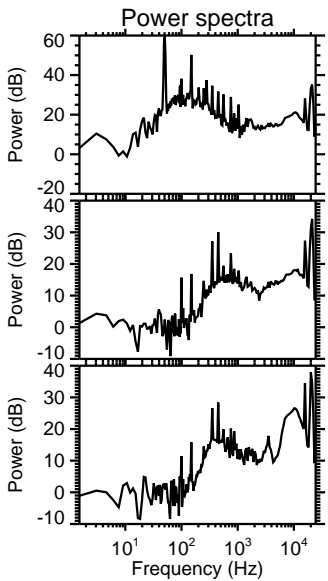
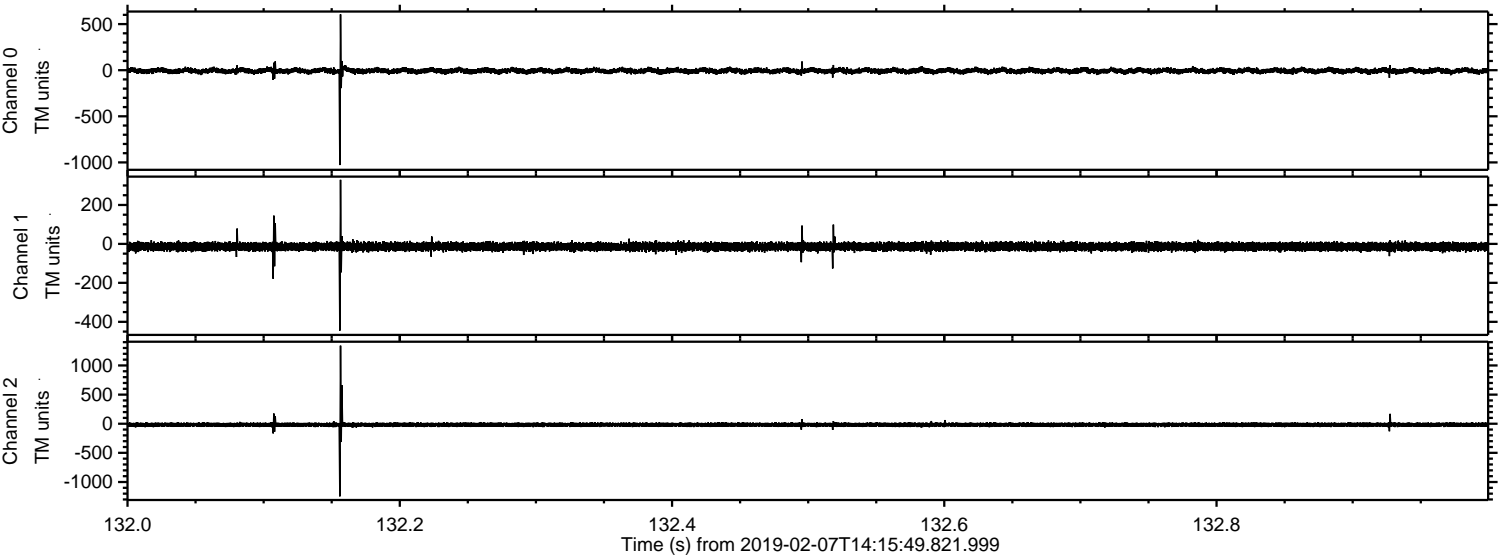


Processed Thu Feb 7 15:23:32 2019 by ELM ver.2012-10-06 from 001\_\_elm20190207\_141548\_\_dat00.bin

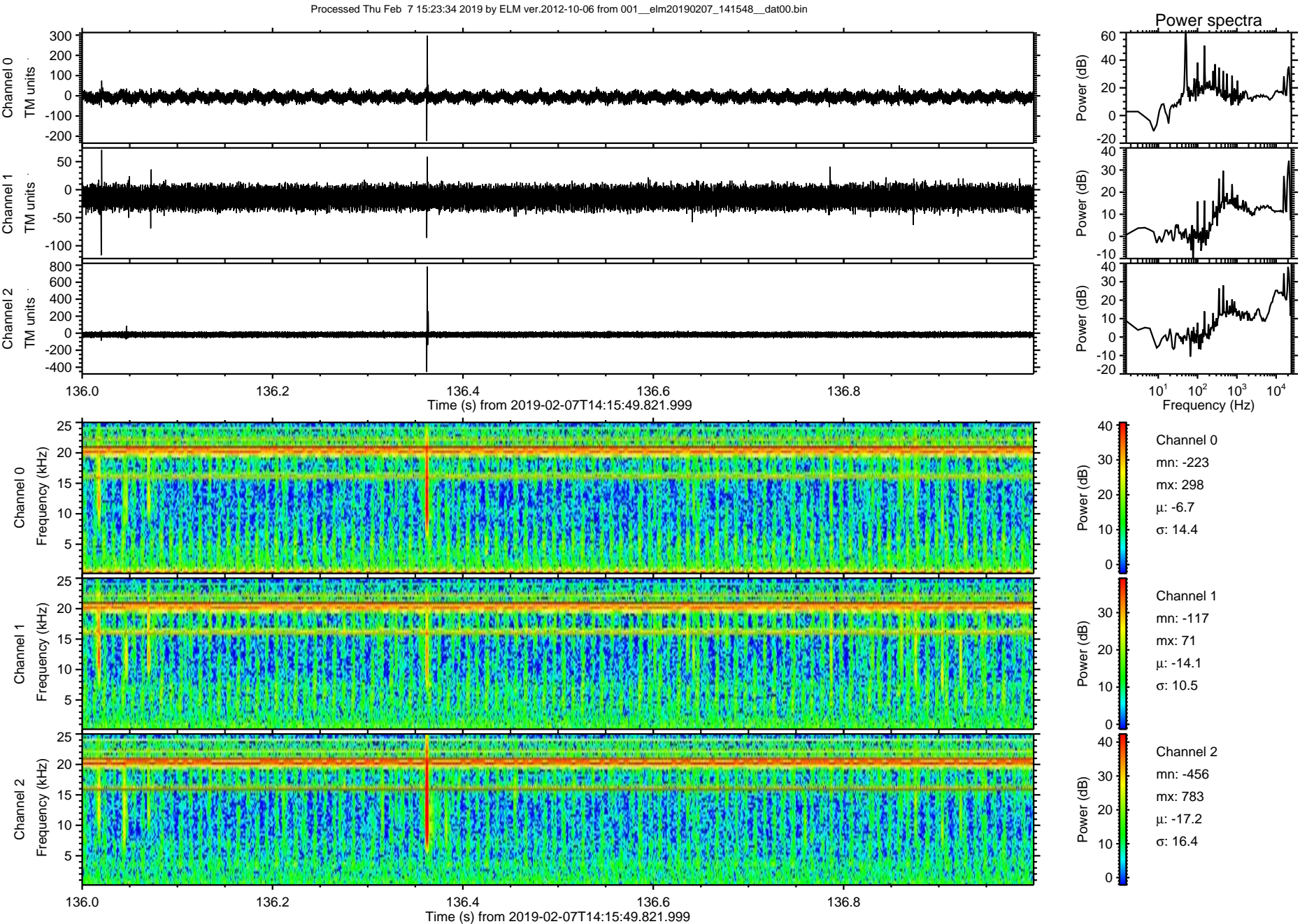


ELMAVAN 3D WAVEFORMS (Measured data sampled at 50 kHz) 51000 packets of 144 samples from 2019-02-07T14:15:49.821.999. Part 133/147

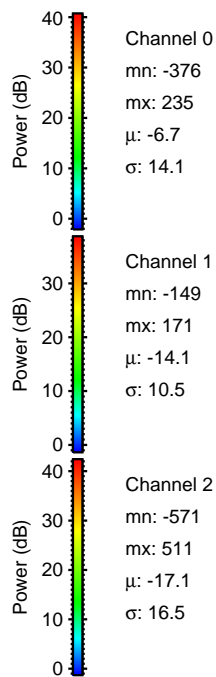
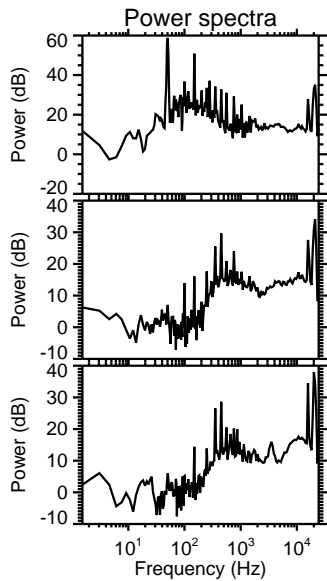
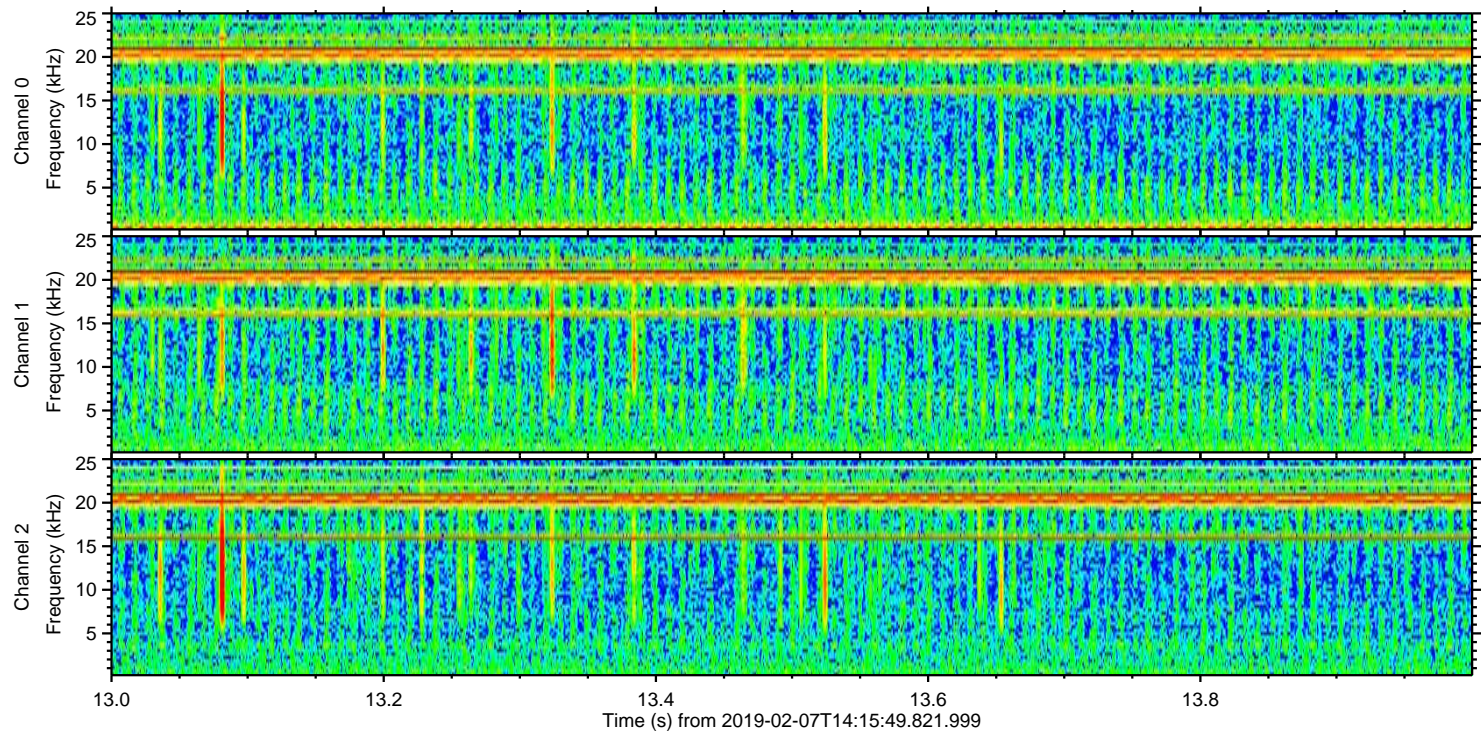
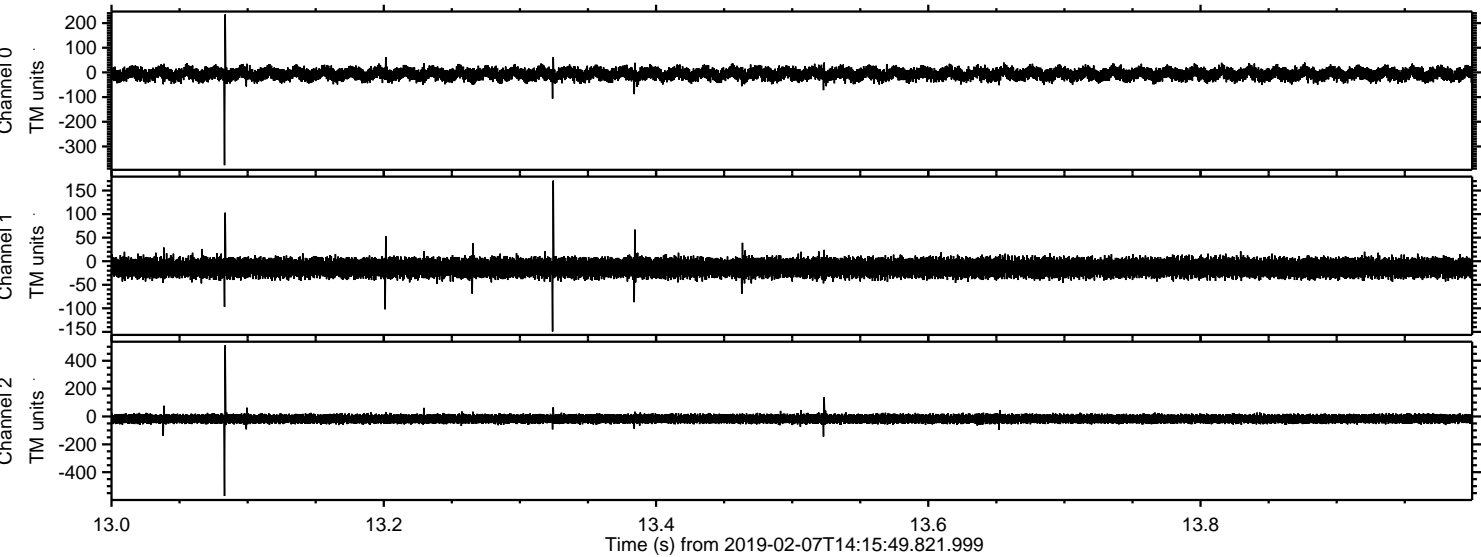
Processed Thu Feb 7 15:23:33 2019 by ELM ver.2012-10-06 from 001\_\_elm20190207\_141548\_\_dat00.bin



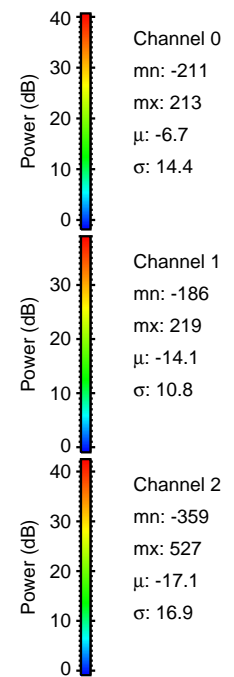
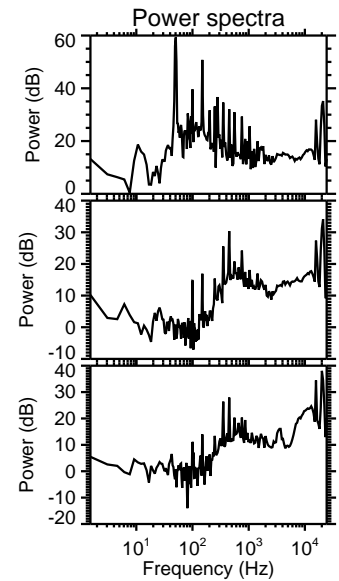
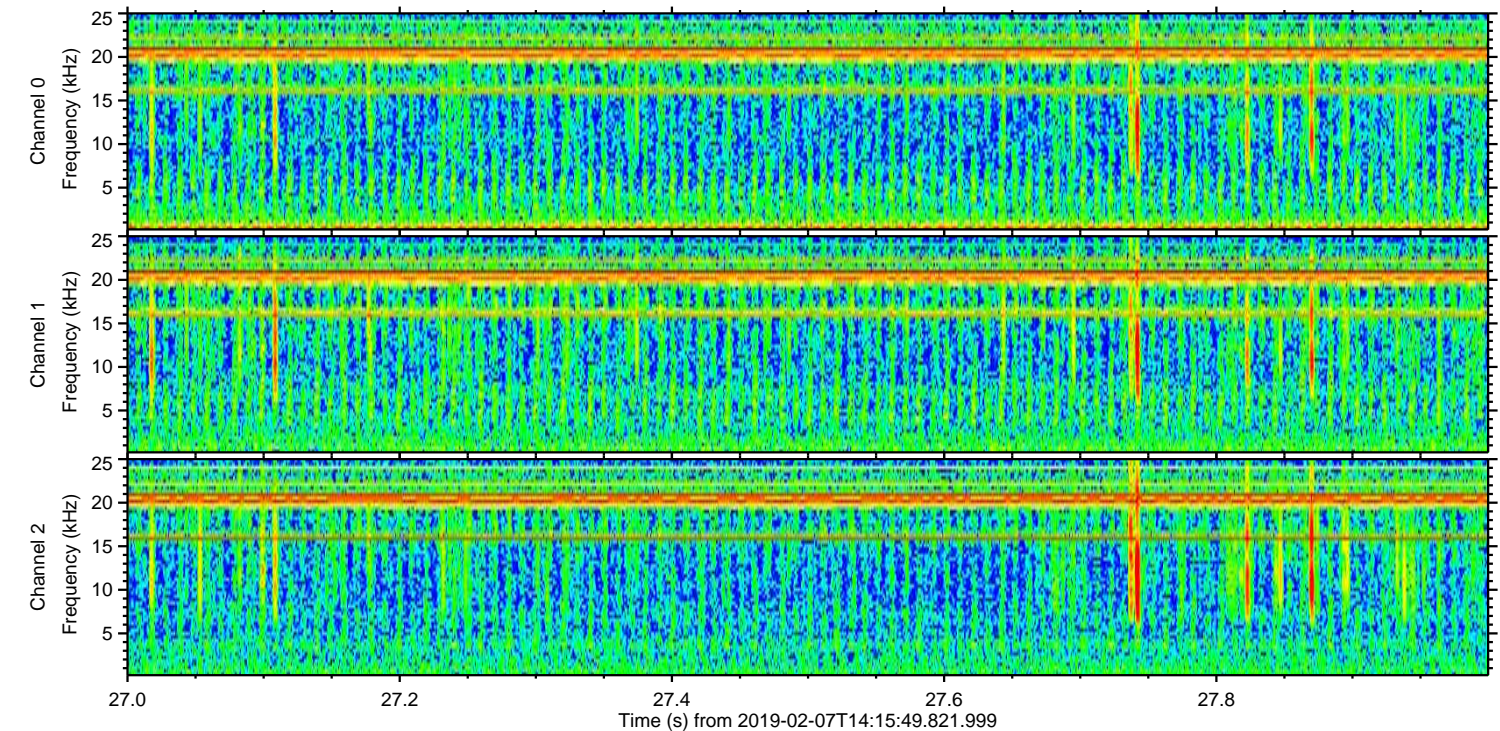
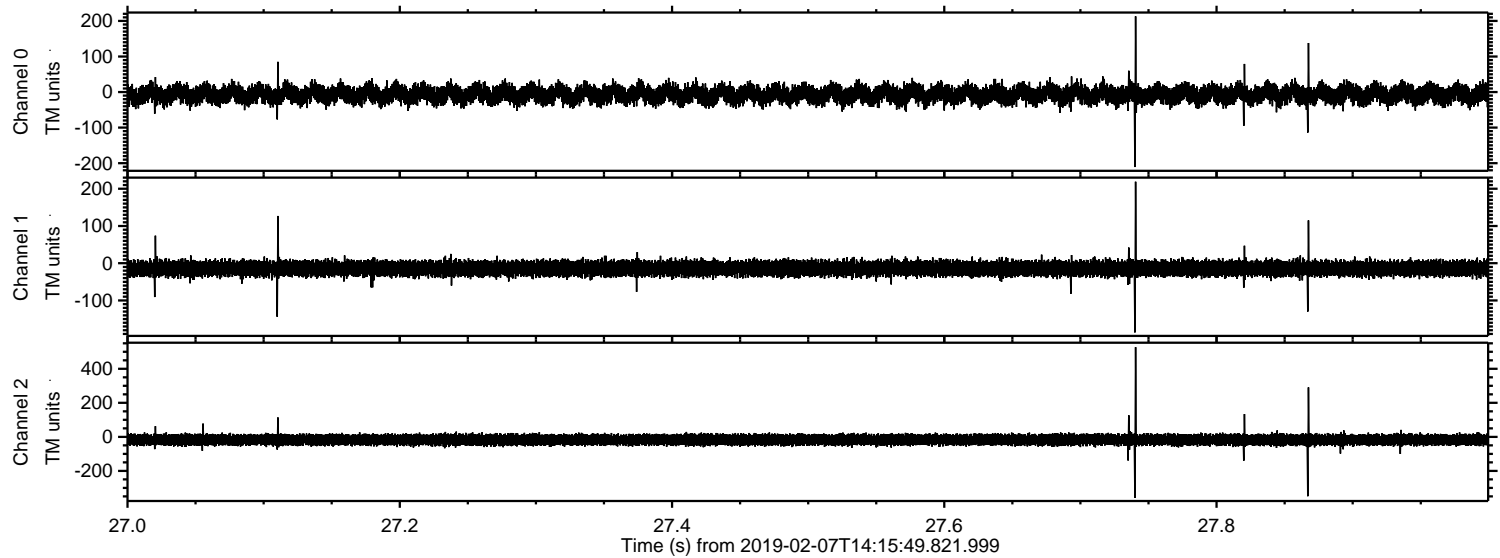
ELMAVAN 3D WAVEFORMS (Measured data sampled at 50 kHz) 51000 packets of 144 samples from 2019-02-07T14:15:49.821.999. Part 137/147



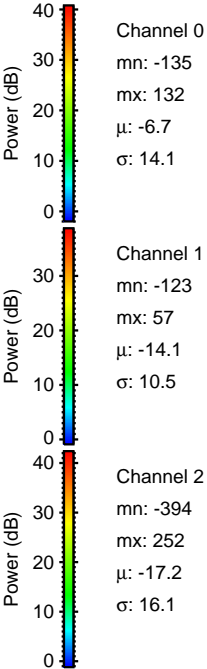
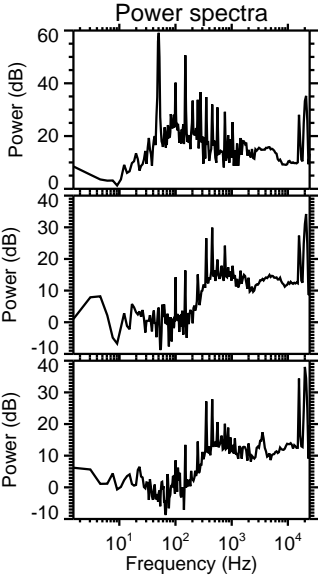
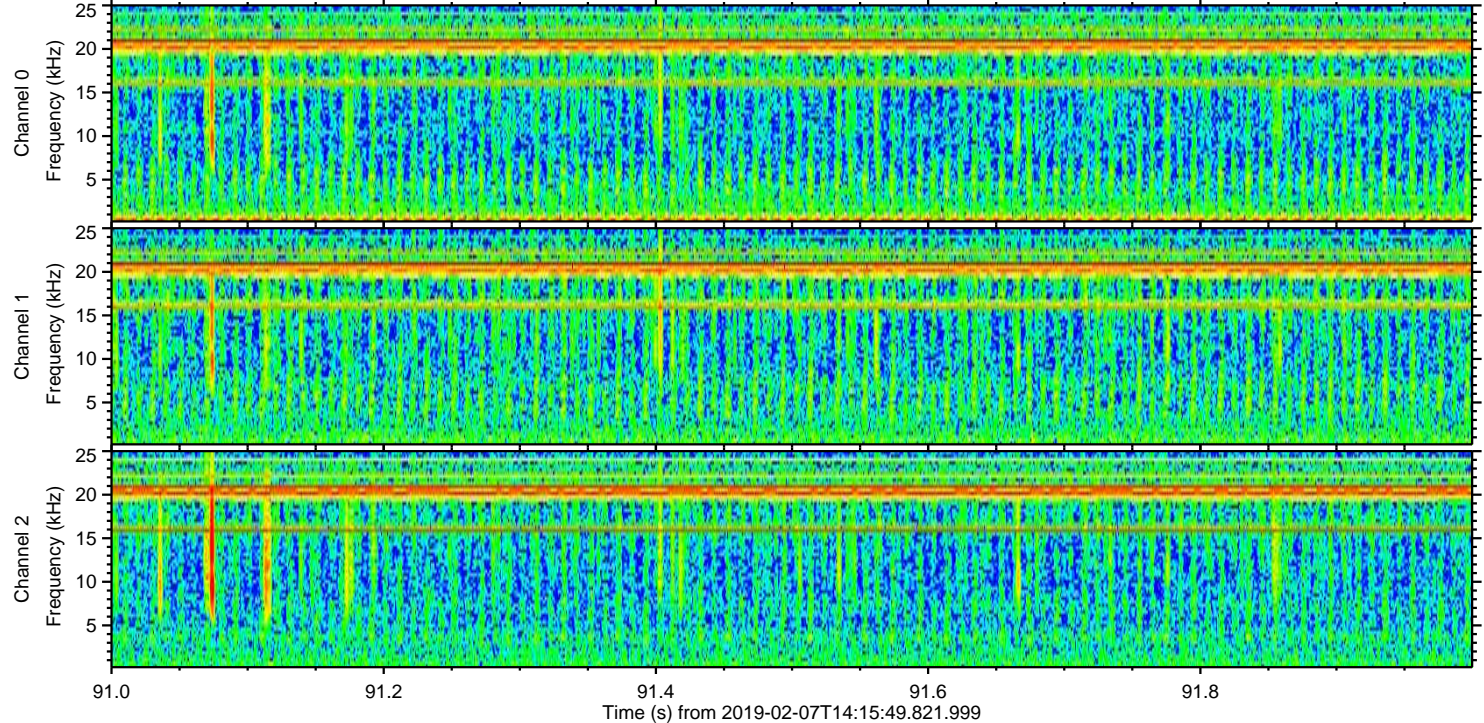
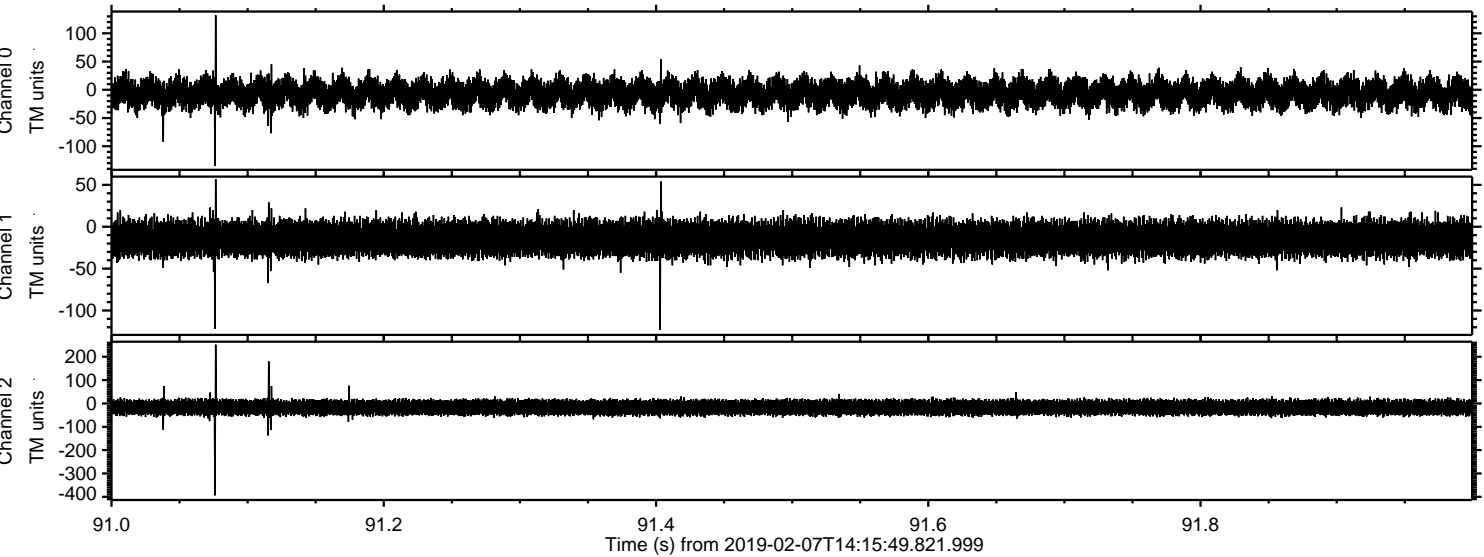
Processed Thu Feb 7 15:23:35 2019 by ELM ver.2012-10-06 from 001\_\_elm20190207\_141548\_\_dat00.bin



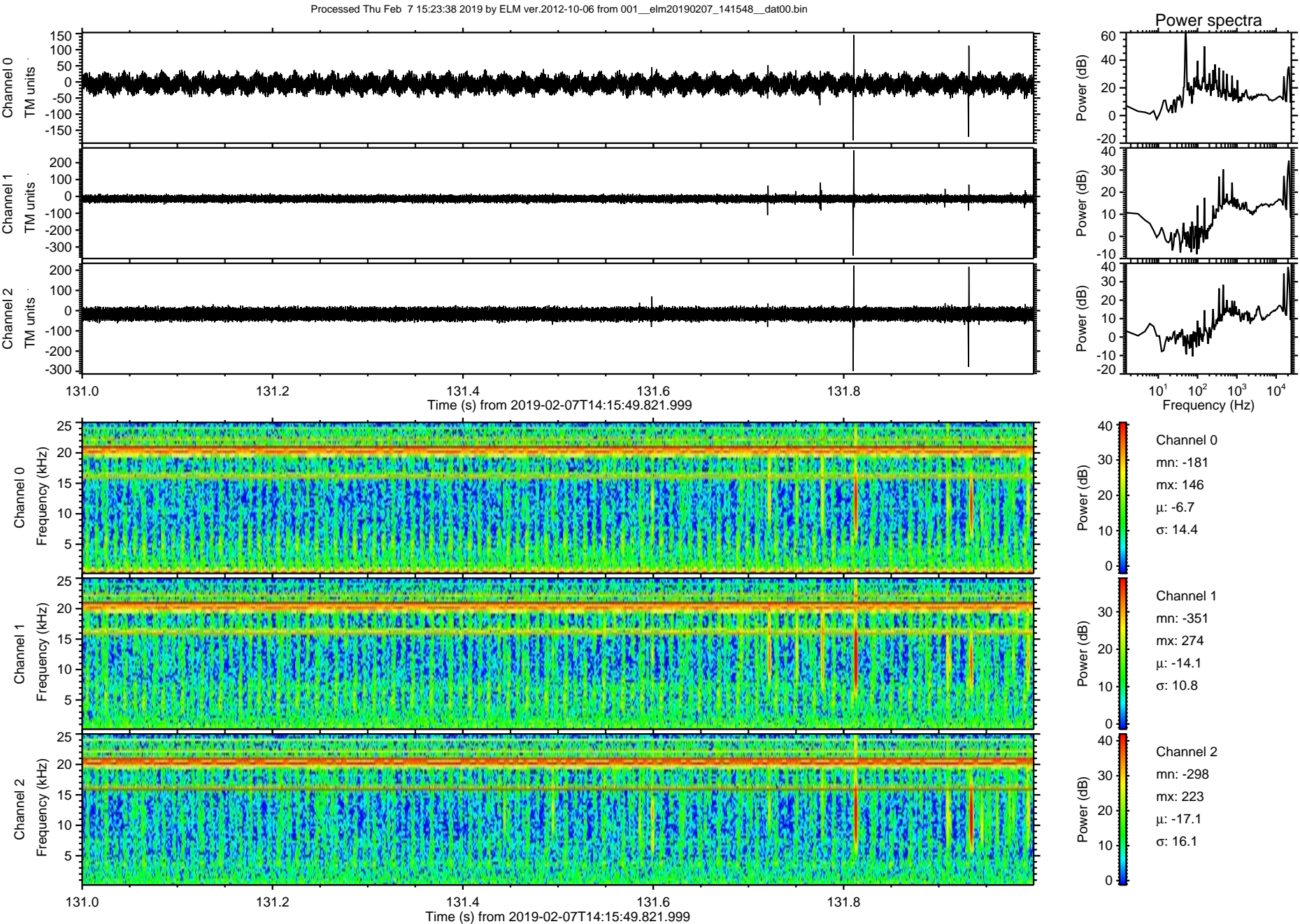
Processed Thu Feb 7 15:23:36 2019 by ELM ver.2012-10-06 from 001\_\_elm20190207\_141548\_\_dat00.bin



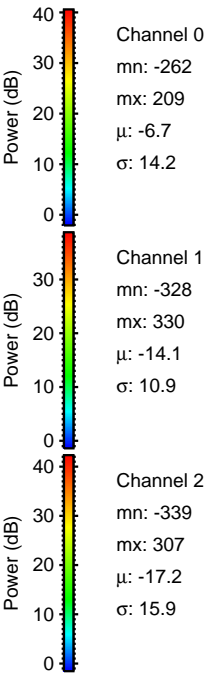
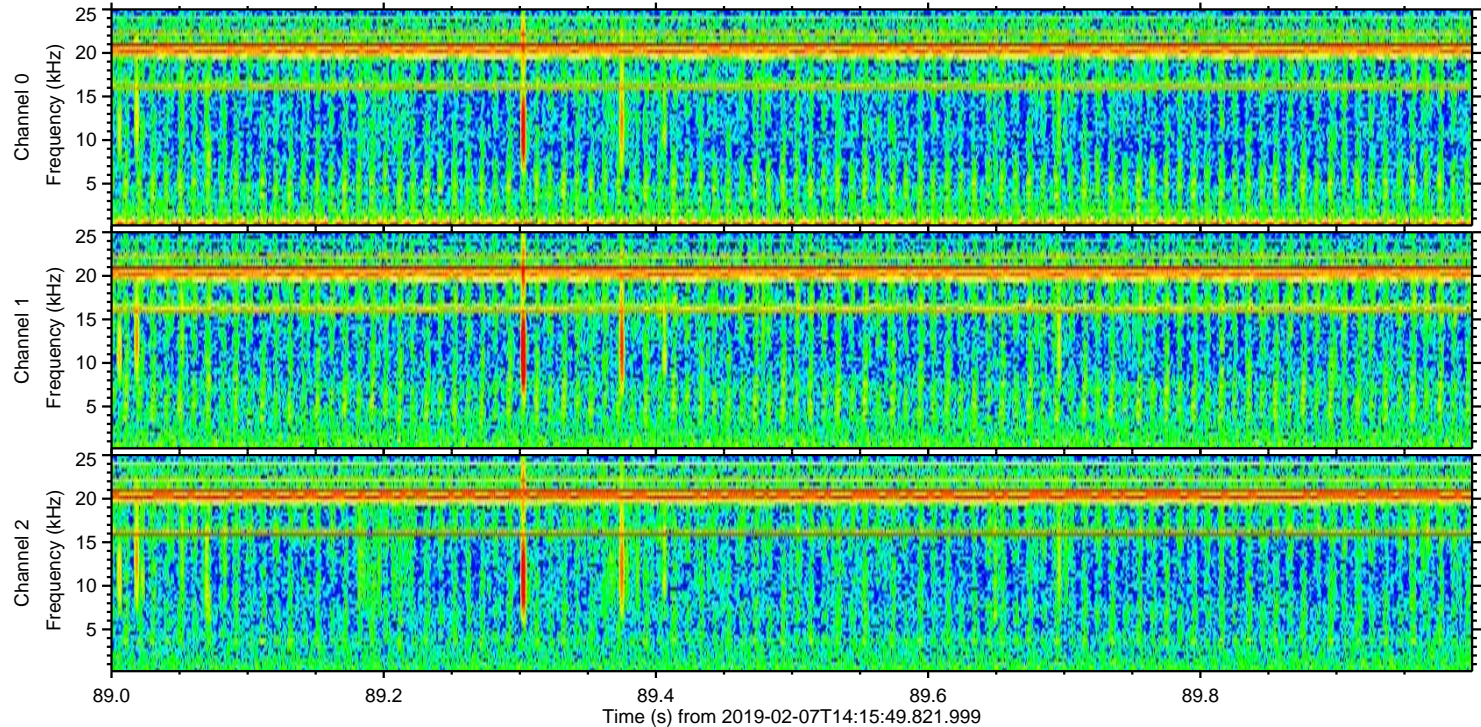
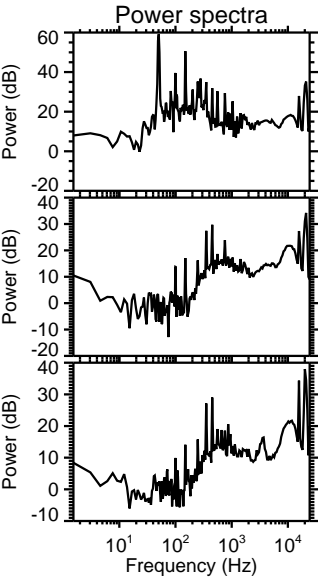
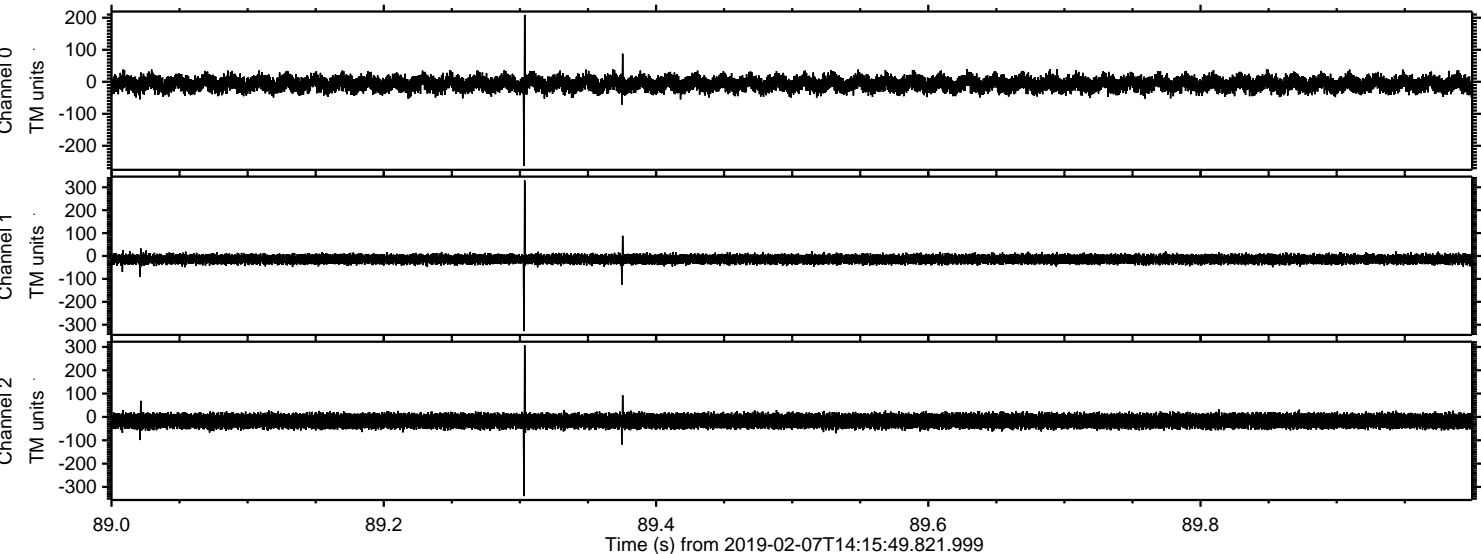
Processed Thu Feb 7 15:23:37 2019 by ELM ver.2012-10-06 from 001\_\_elm20190207\_141548\_\_dat00.bin



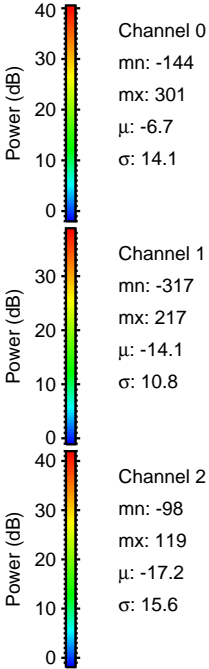
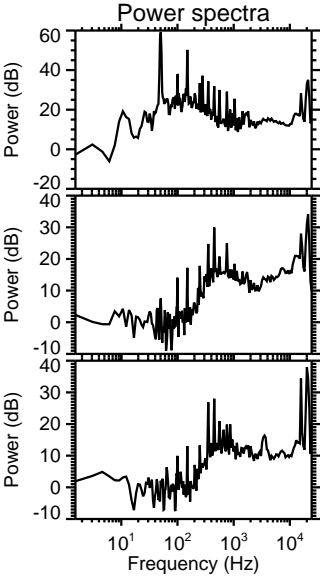
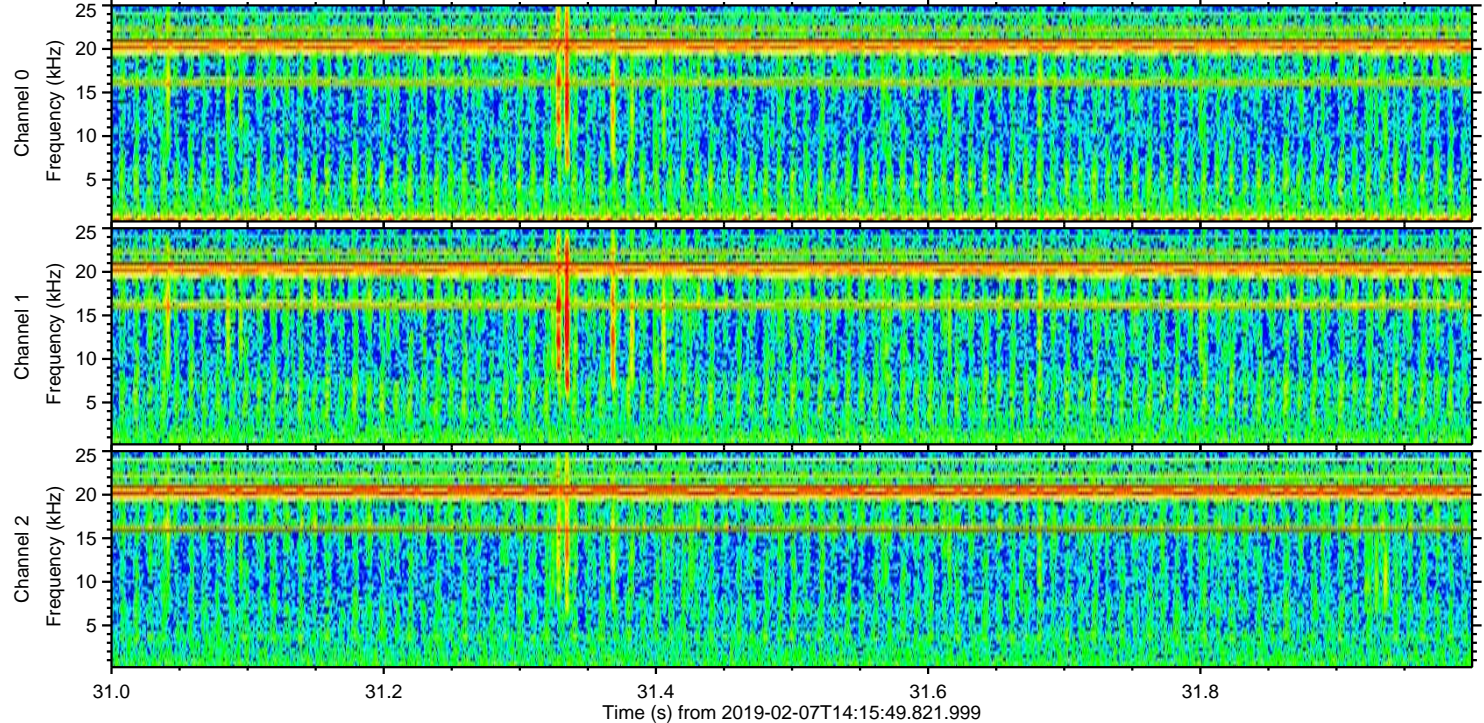
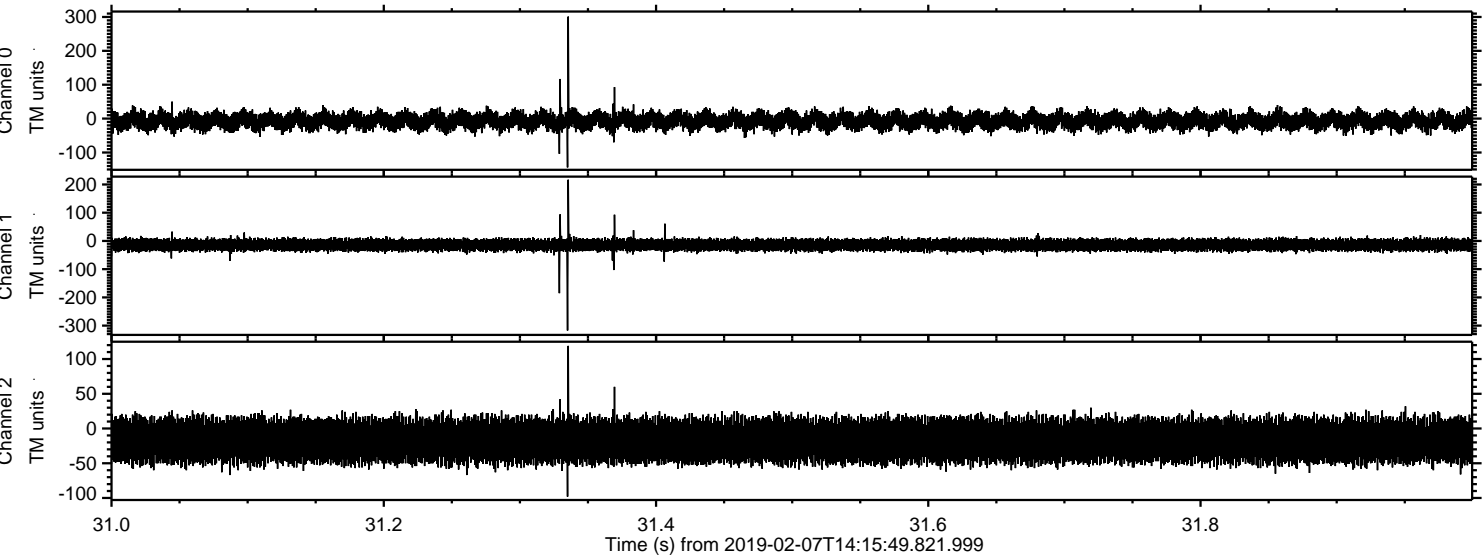
ELMAVAN 3D WAVEFORMS (Measured data sampled at 50 kHz) 51000 packets of 144 samples from 2019-02-07T14:15:49.821.999. Part 132/147



Processed Thu Feb 7 15:23:39 2019 by ELM ver.2012-10-06 from 001\_\_elm20190207\_141548\_\_dat00.bin



Processed Thu Feb 7 15:23:40 2019 by ELM ver.2012-10-06 from 001\_\_elm20190207\_141548\_\_dat00.bin



Processed Thu Feb 7 15:23:41 2019 by ELM ver.2012-10-06 from 001\_\_elm20190207\_141548\_\_dat00.bin

