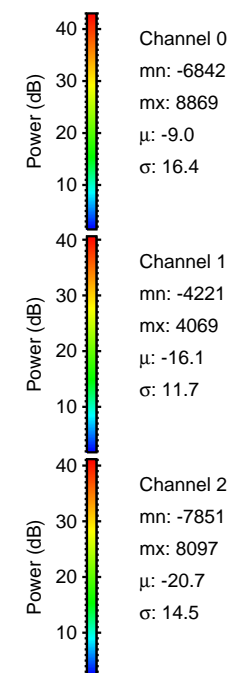
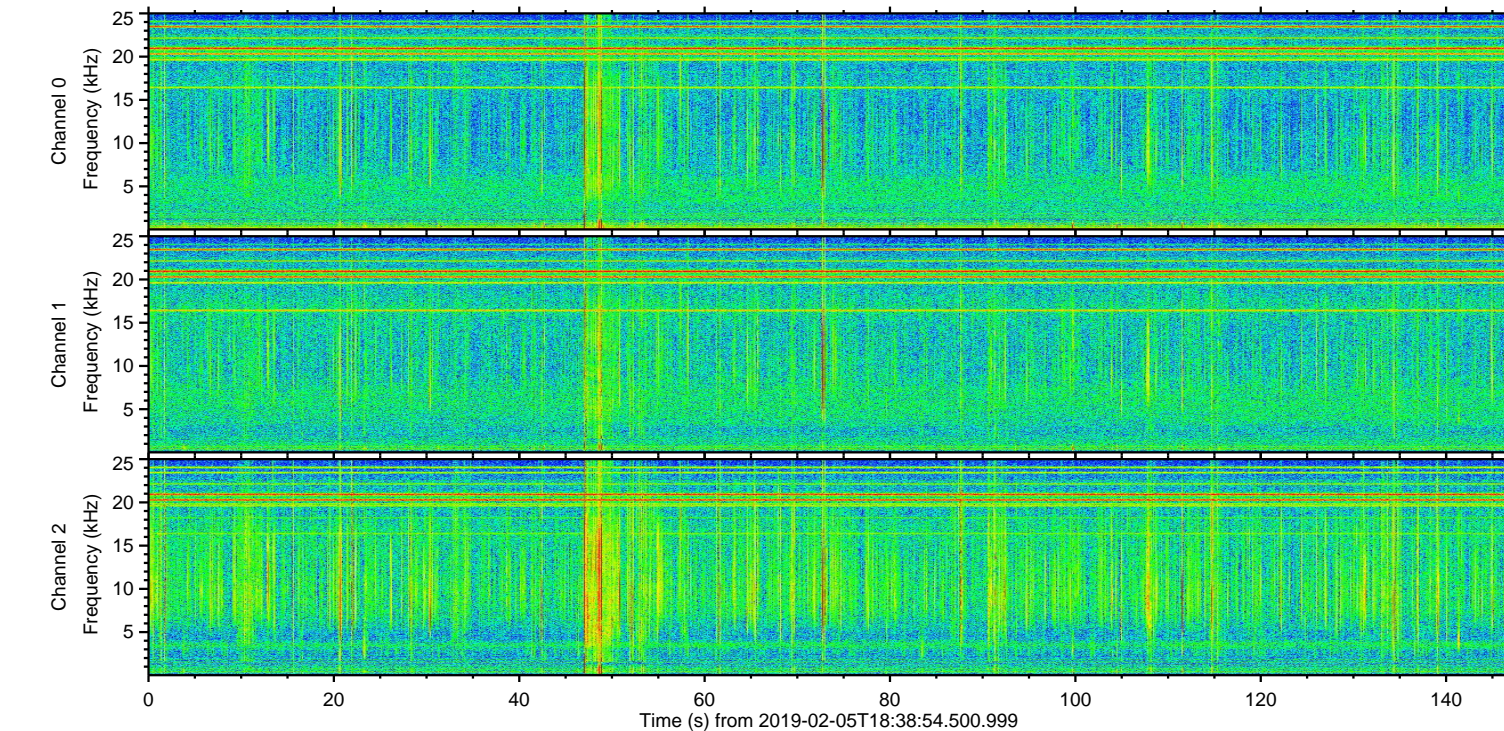
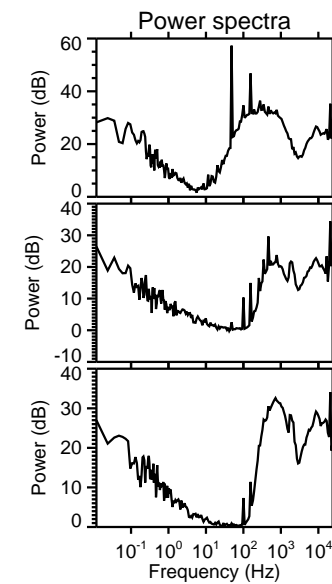
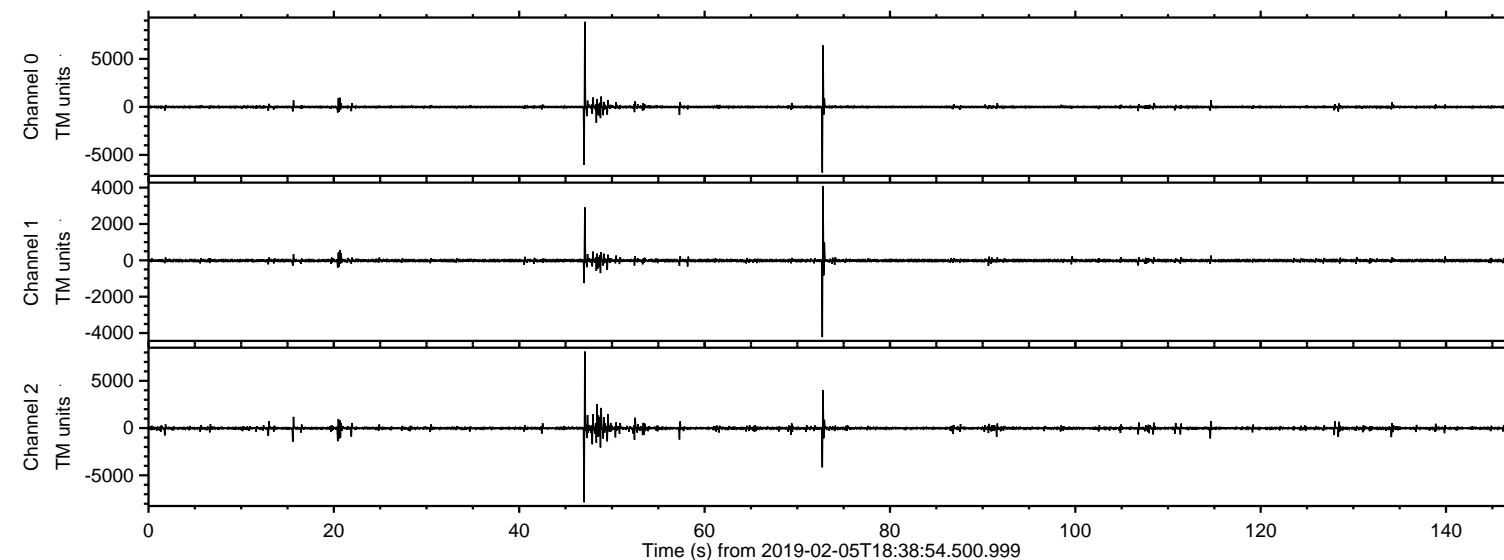
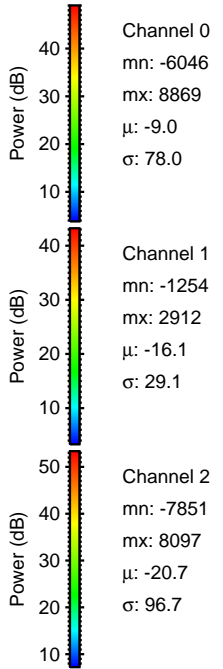
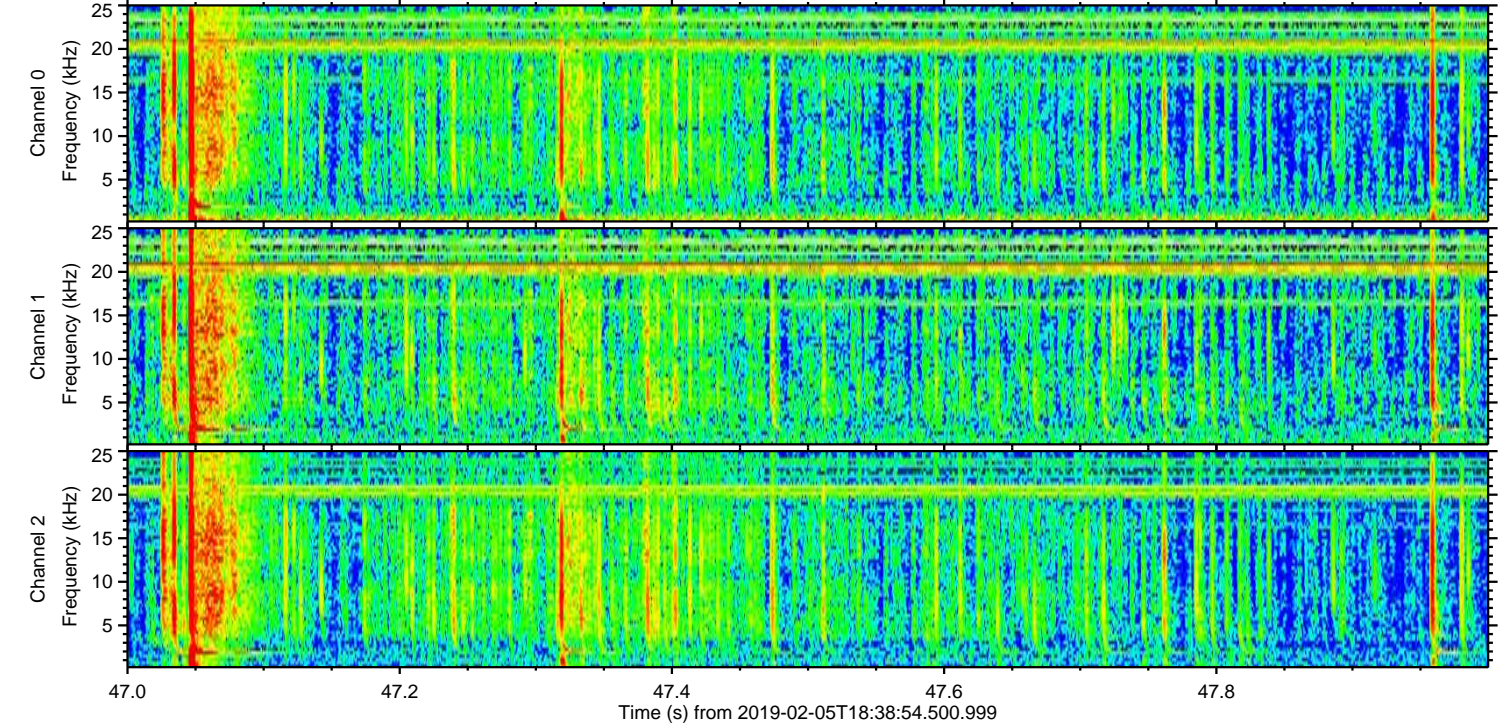
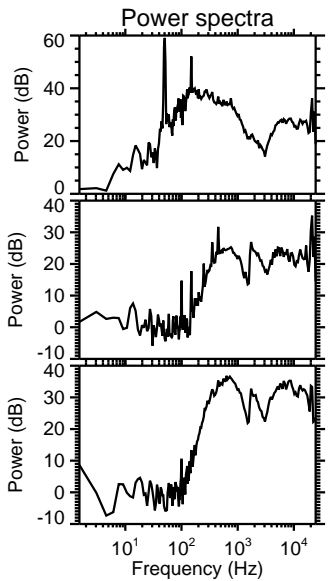
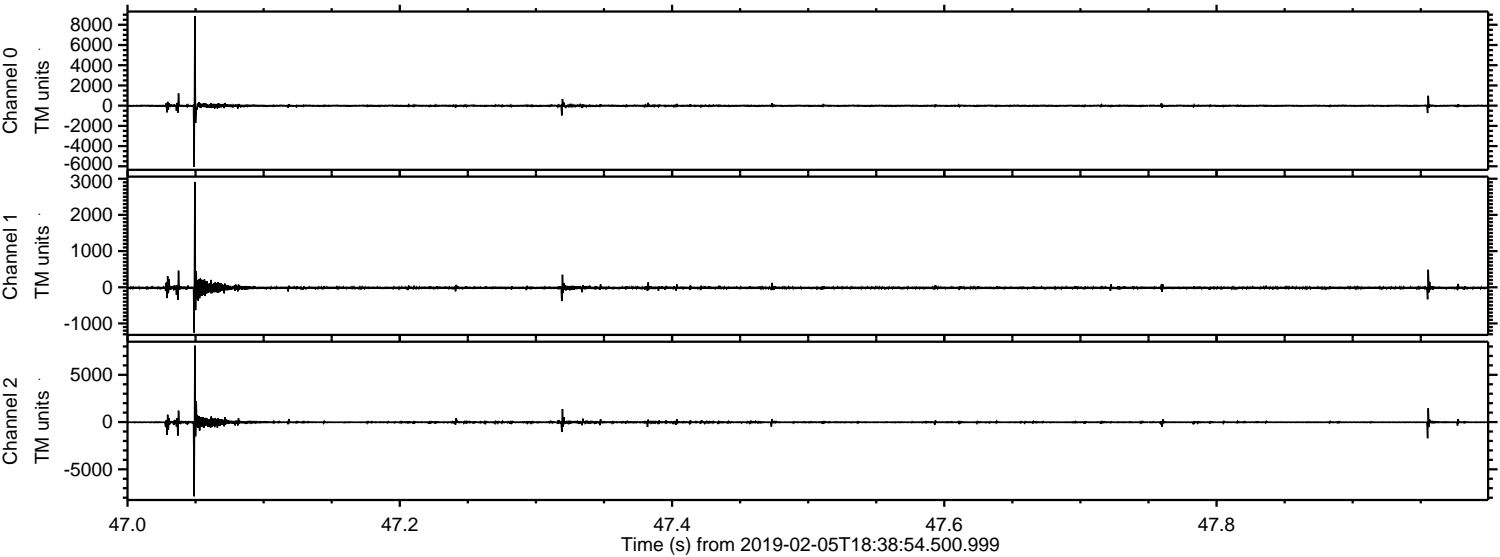


ELMAVAN 3D WAVEFORMS (Measured data sampled at 50 kHz) 51000 packets of 144 samples from 2019-02-05T18:38:54.500.999.

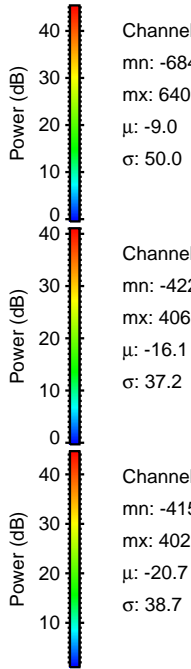
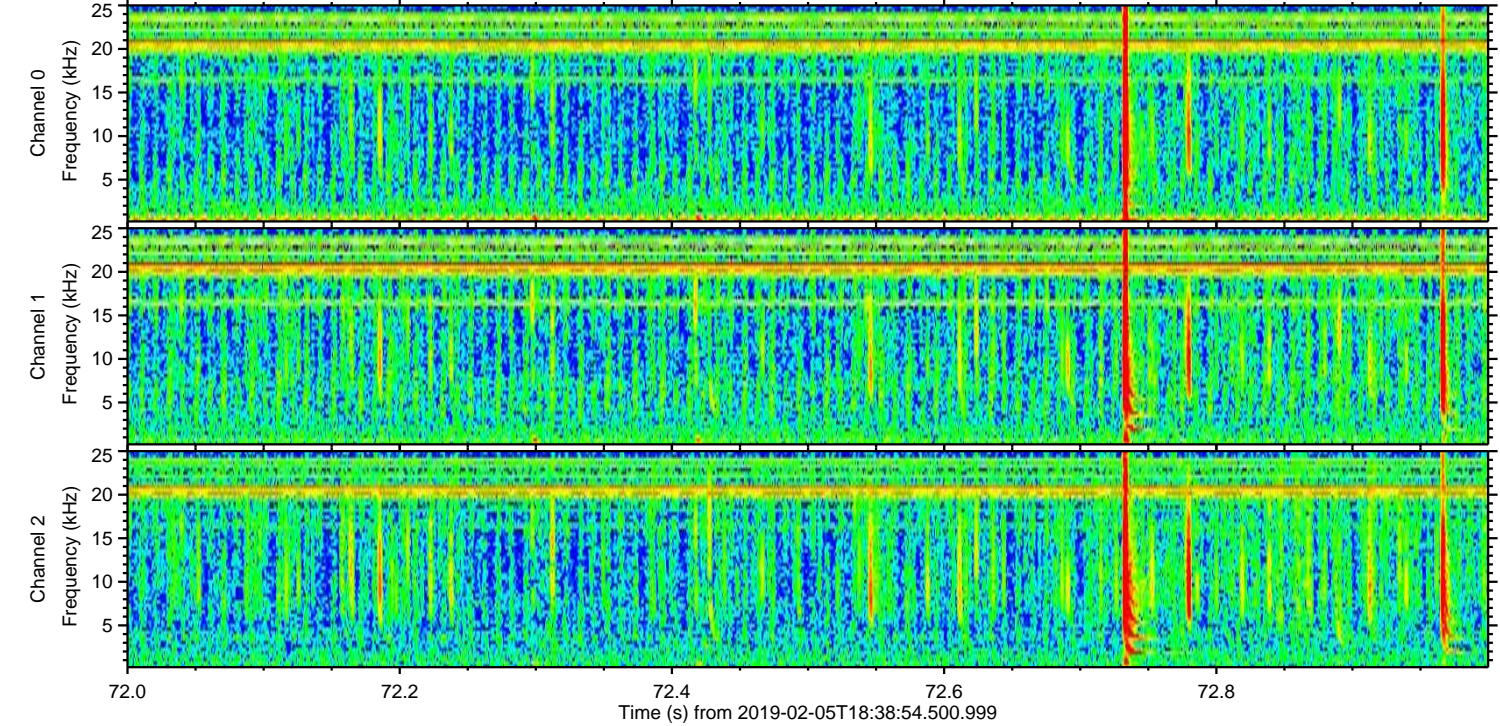
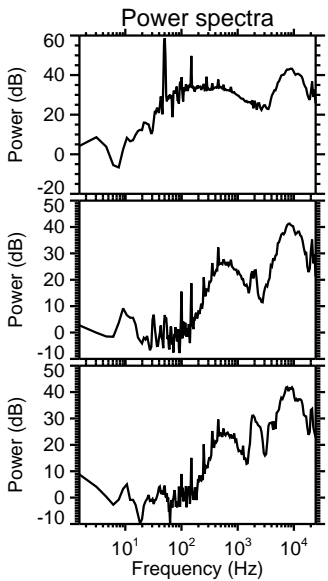
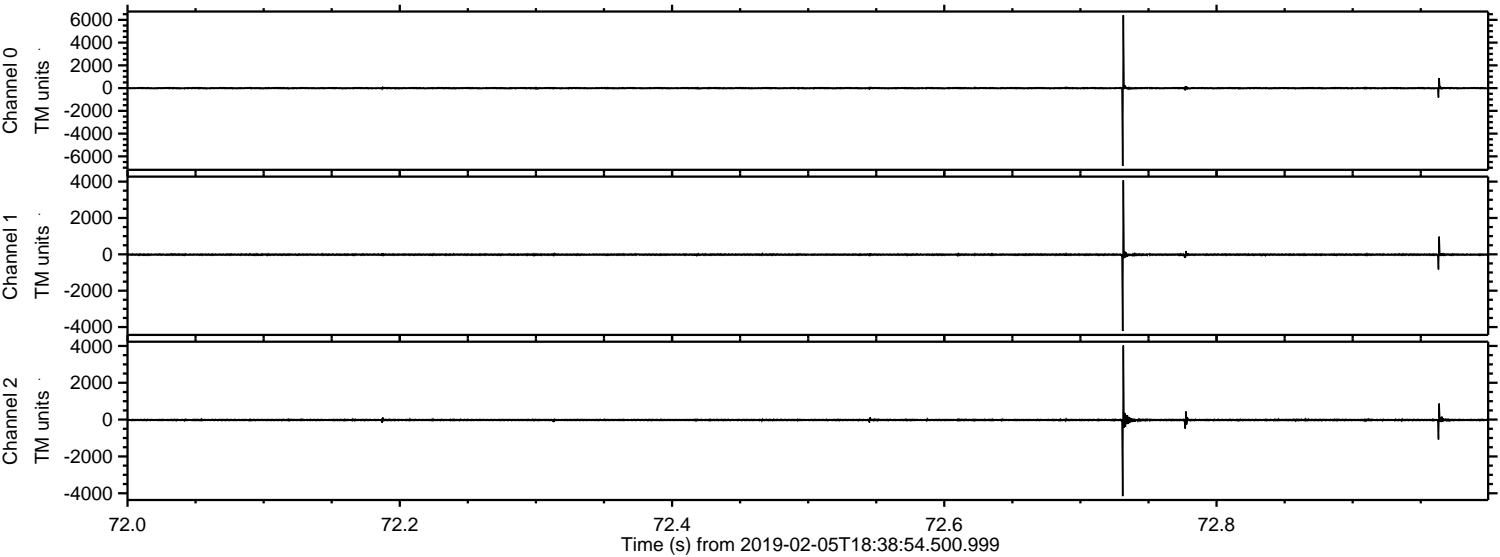
Processed Tue Feb 5 19:46:47 2019 by ELM ver.2012-10-06 from 001__elm20190205_183853__dat00.bin



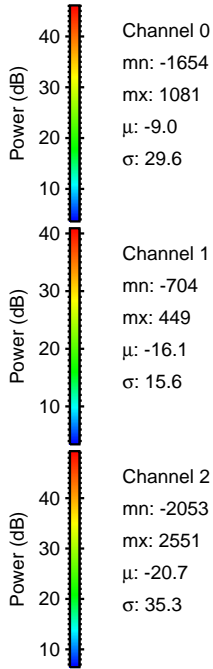
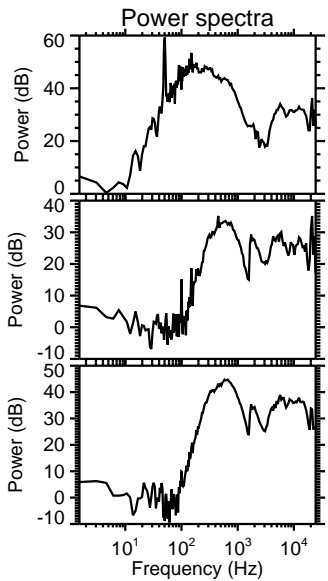
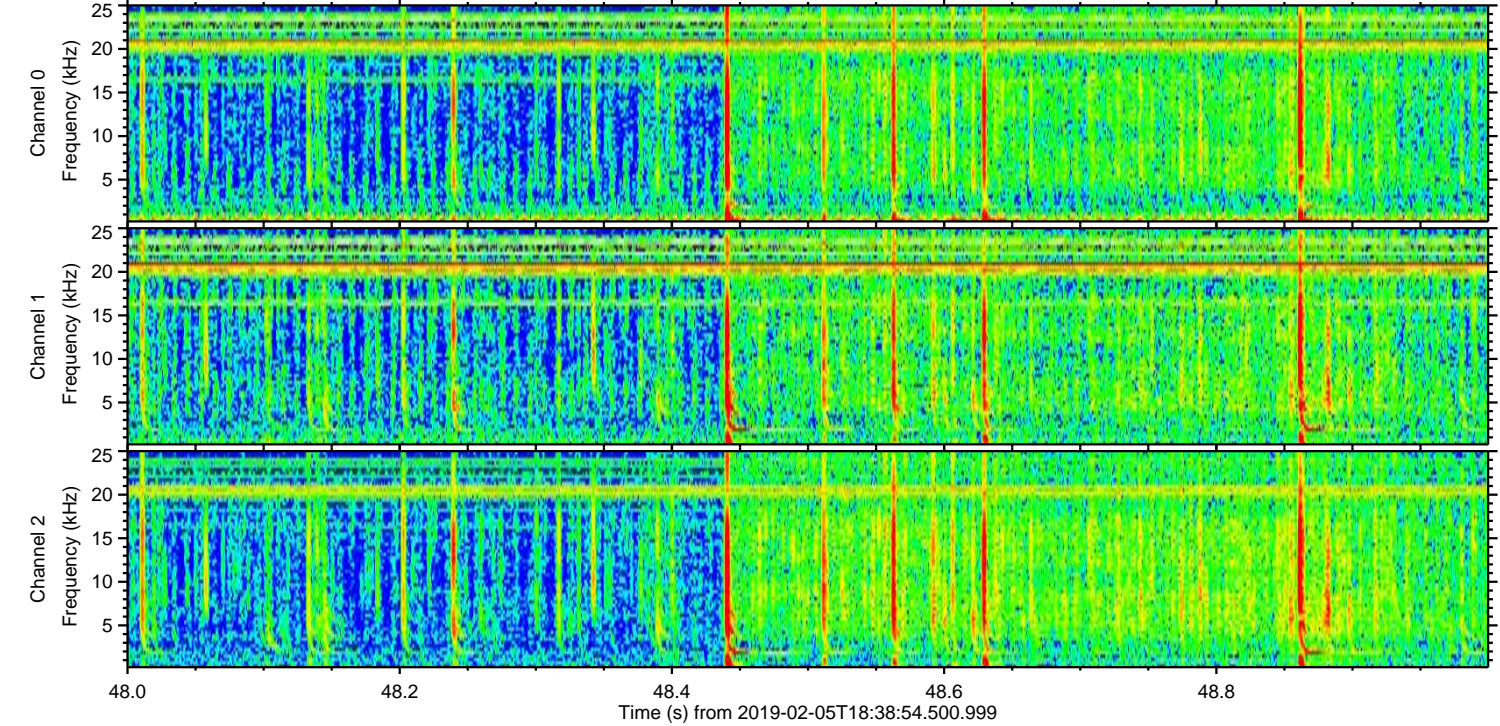
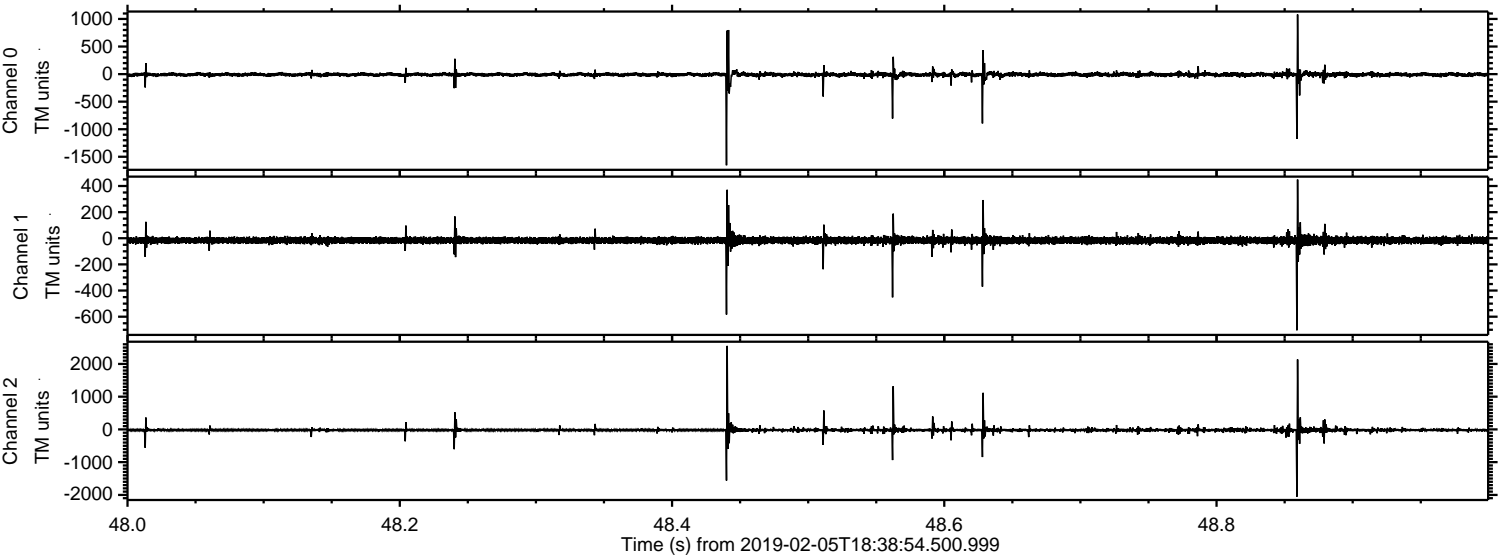
Processed Tue Feb 5 19:46:53 2019 by ELM ver.2012-10-06 from 001__elm20190205_183853__dat00.bin



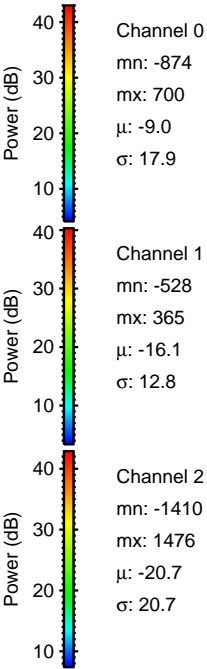
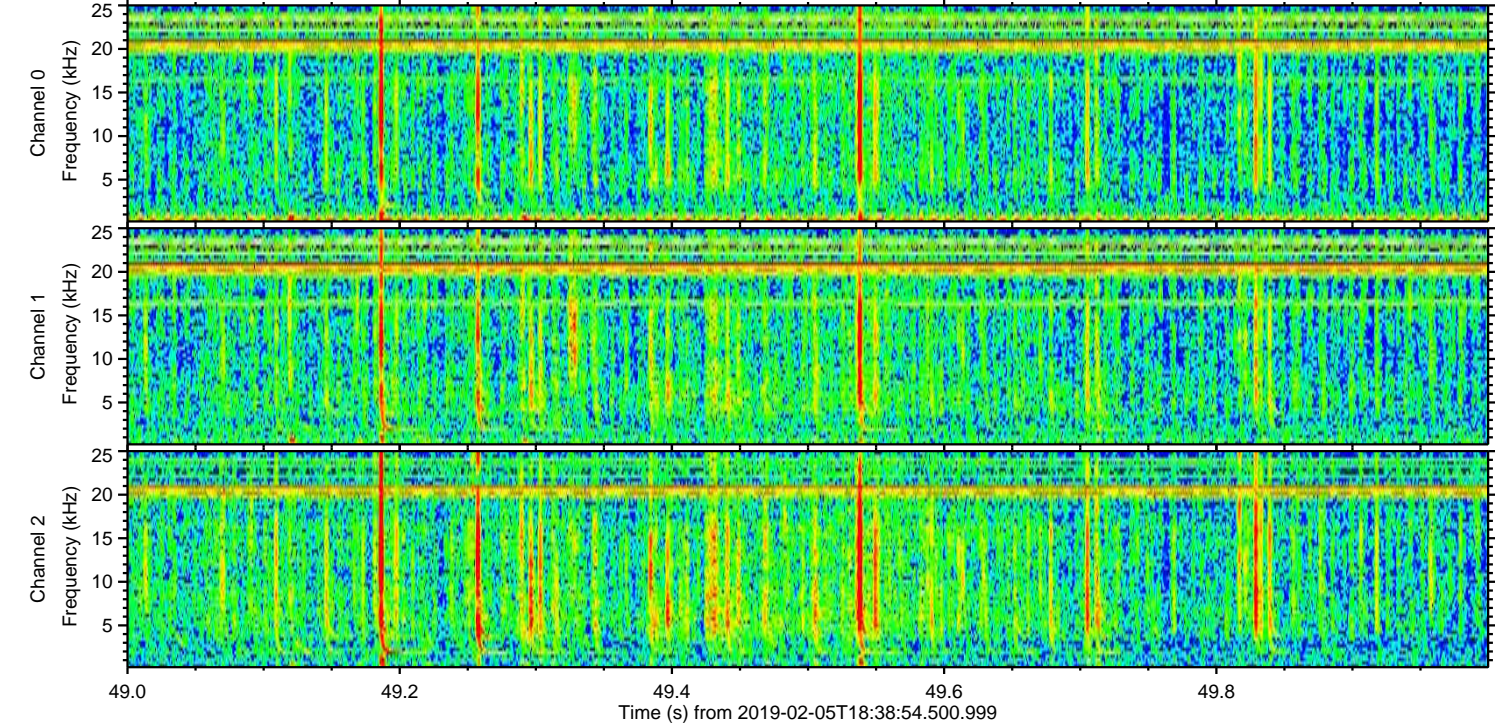
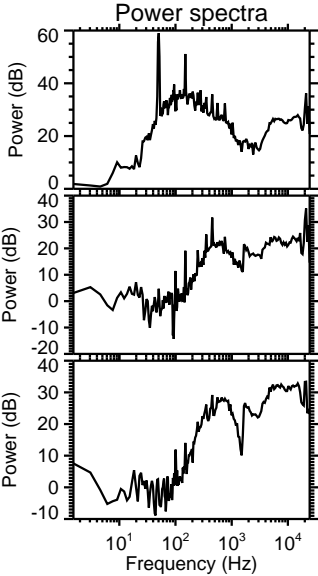
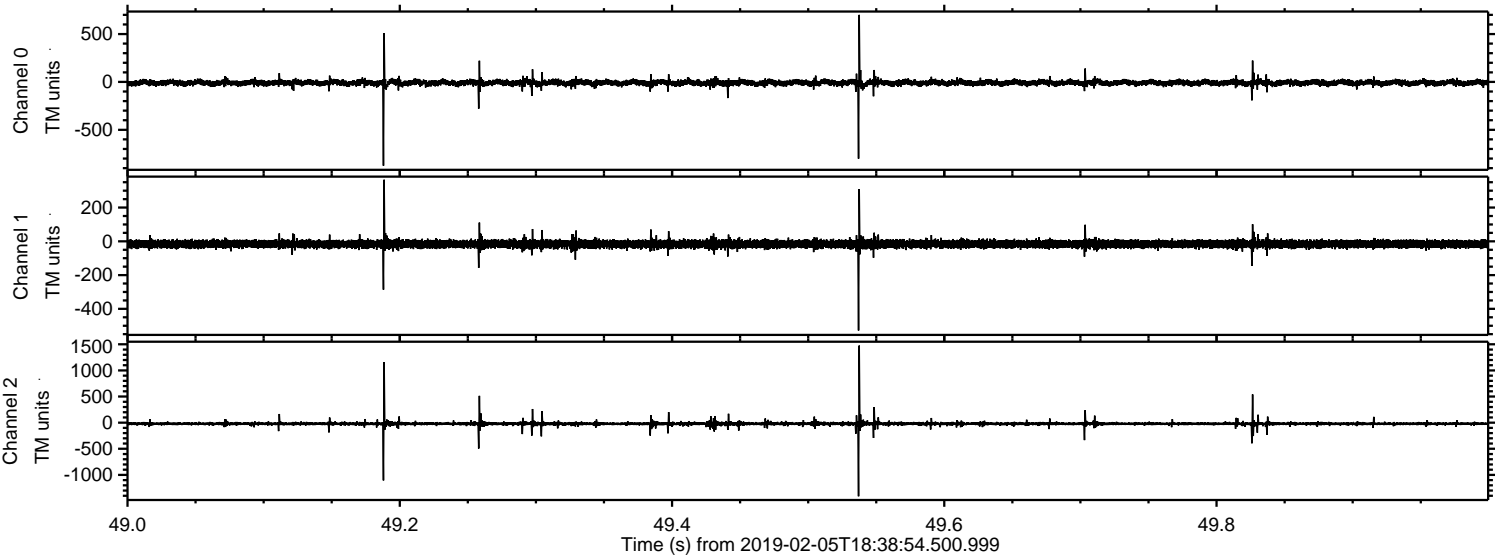
Processed Tue Feb 5 19:46:53 2019 by ELM ver.2012-10-06 from 001__elm20190205_183853__dat00.bin



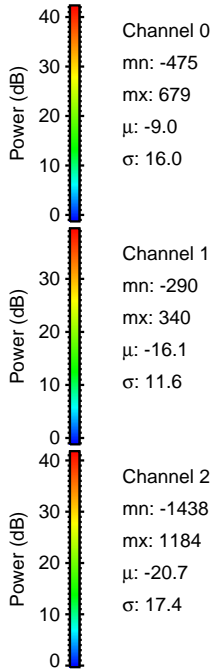
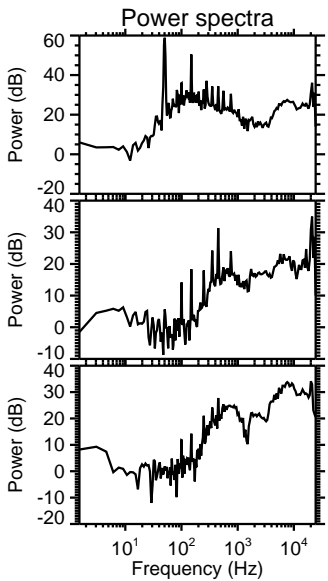
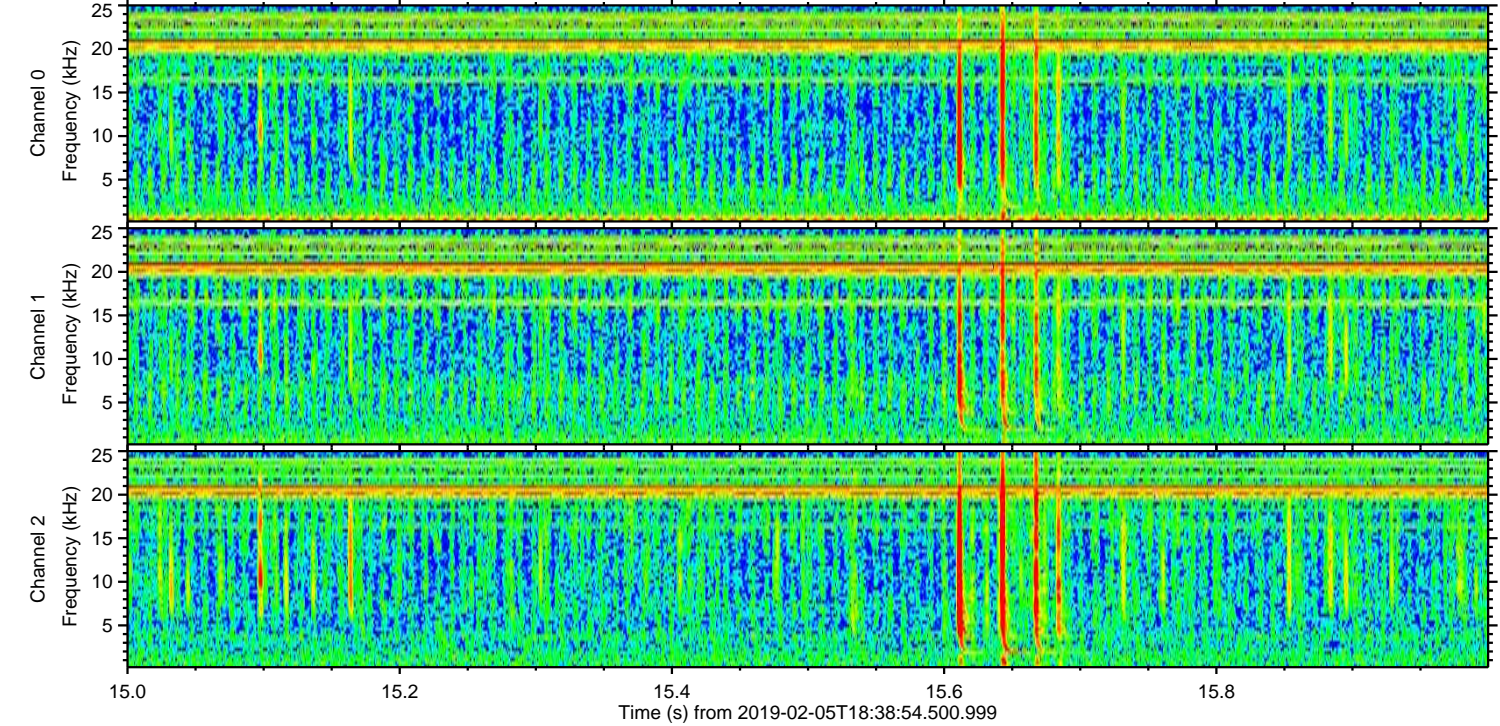
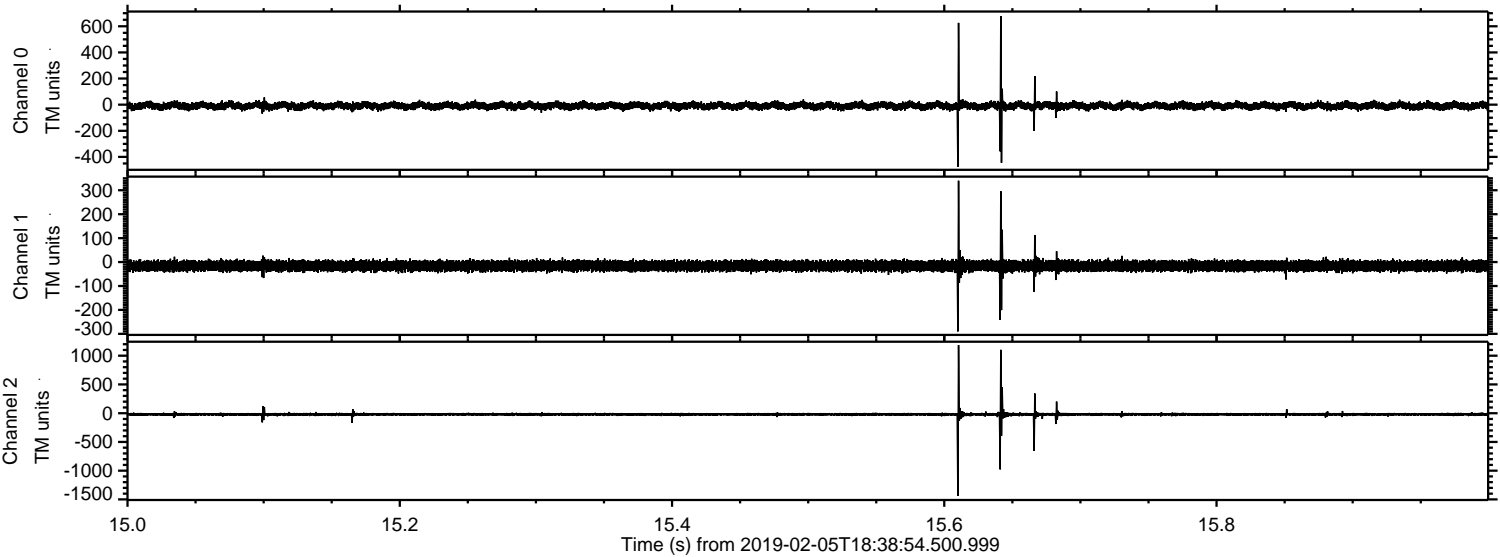
Processed Tue Feb 5 19:46:54 2019 by ELM ver.2012-10-06 from 001__elm20190205_183853__dat00.bin



Processed Tue Feb 5 19:46:55 2019 by ELM ver.2012-10-06 from 001__elm20190205_183853__dat00.bin

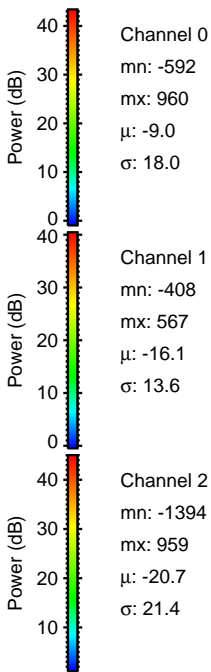
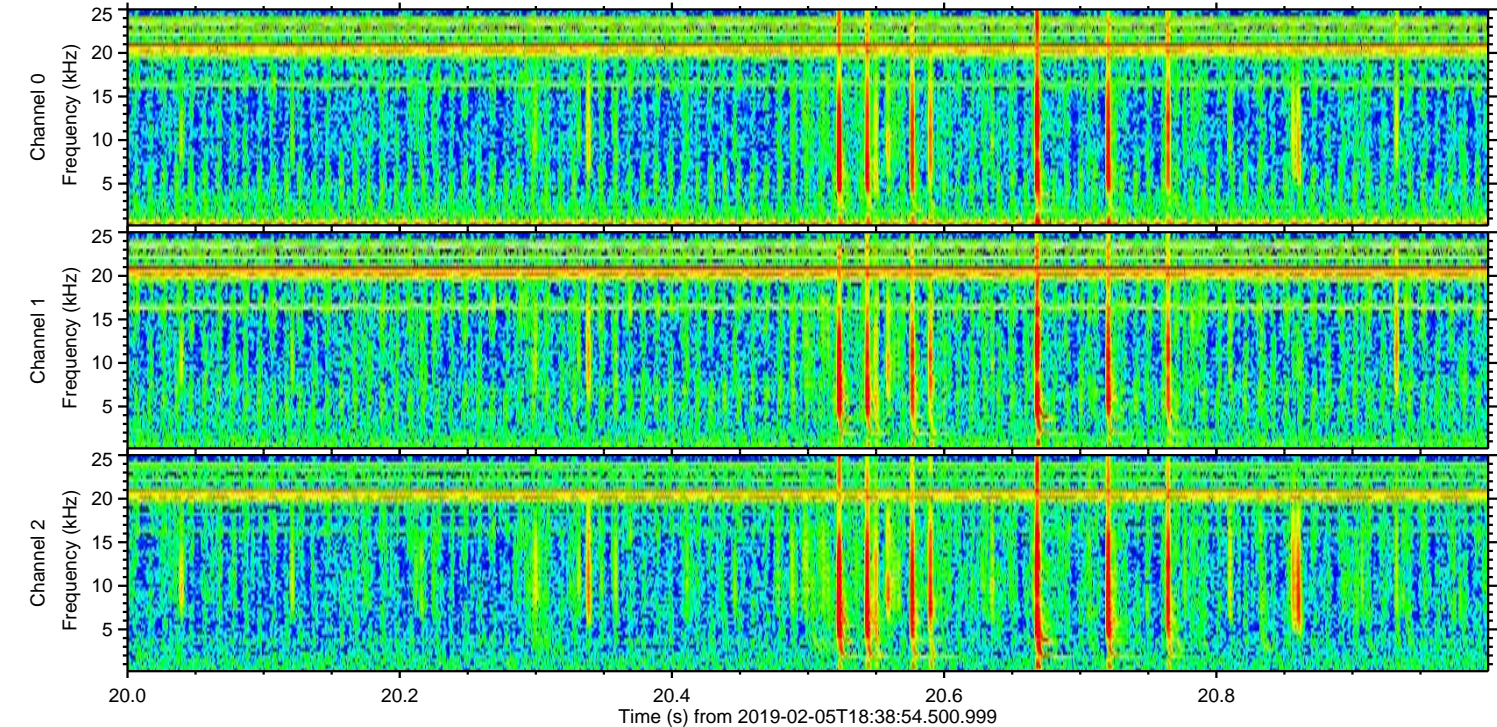
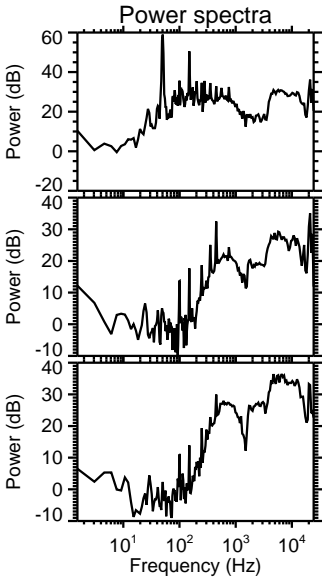
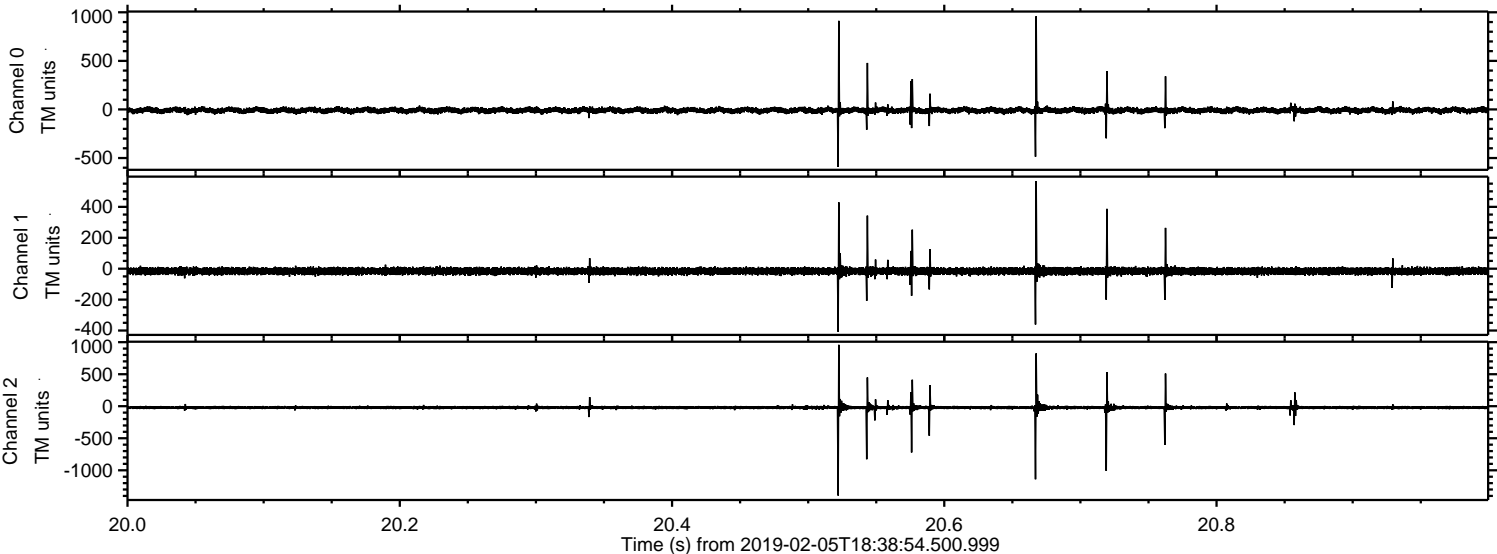


Processed Tue Feb 5 19:46:55 2019 by ELM ver.2012-10-06 from 001__elm20190205_183853__dat00.bin

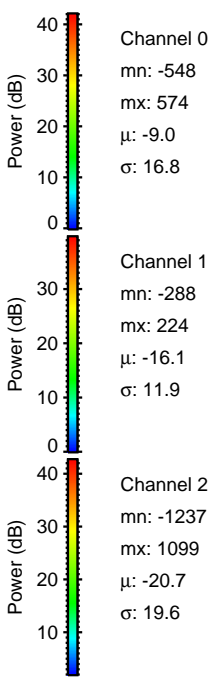
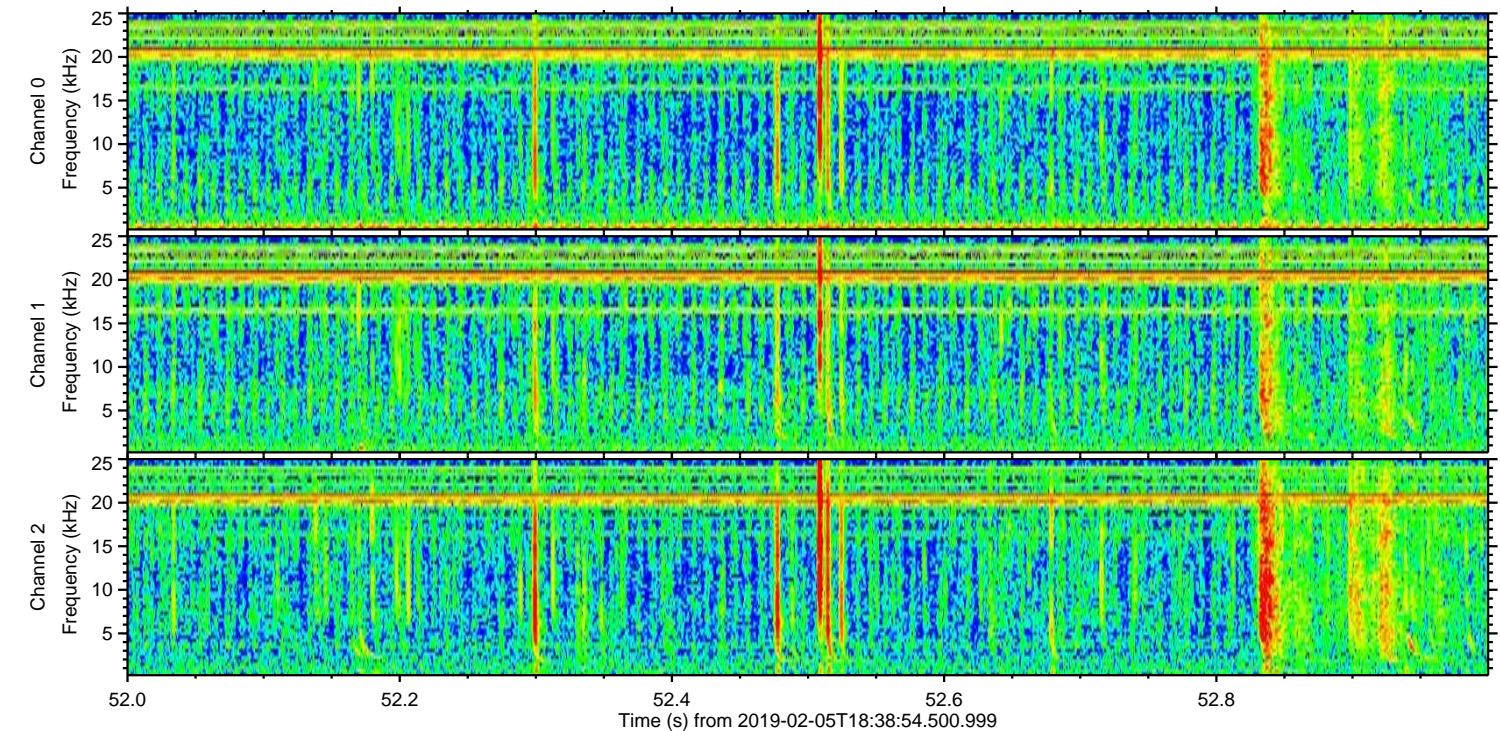
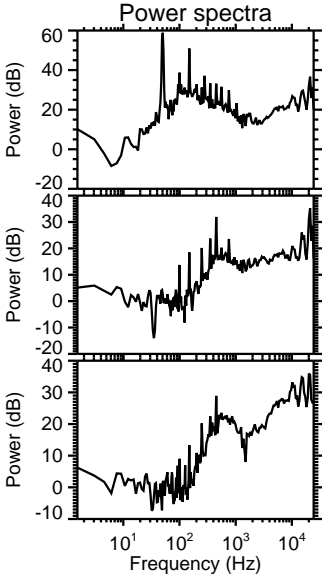
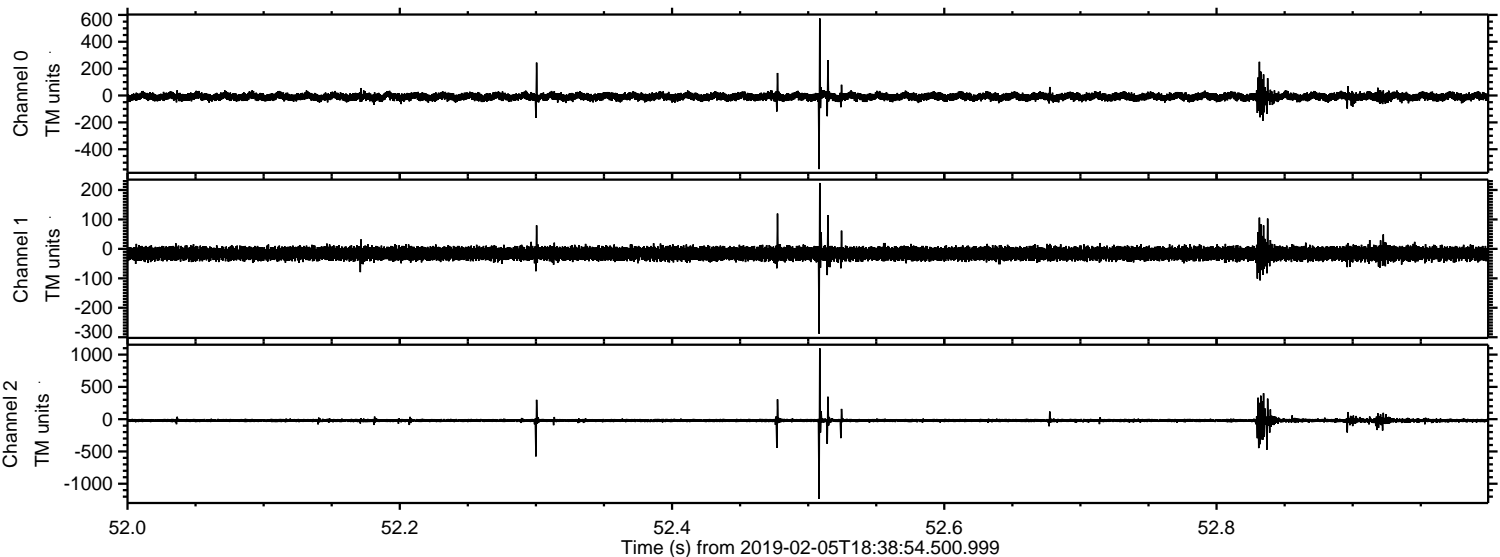


ELMAVAN 3D WAVEFORMS (Measured data sampled at 50 kHz) 51000 packets of 144 samples from 2019-02-05T18:38:54.500.999. Part 21/147

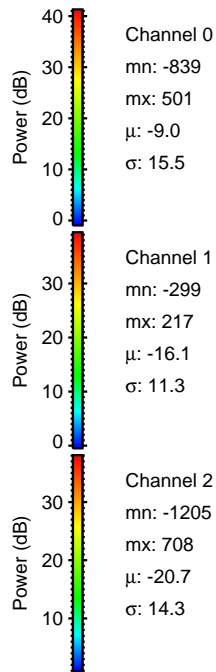
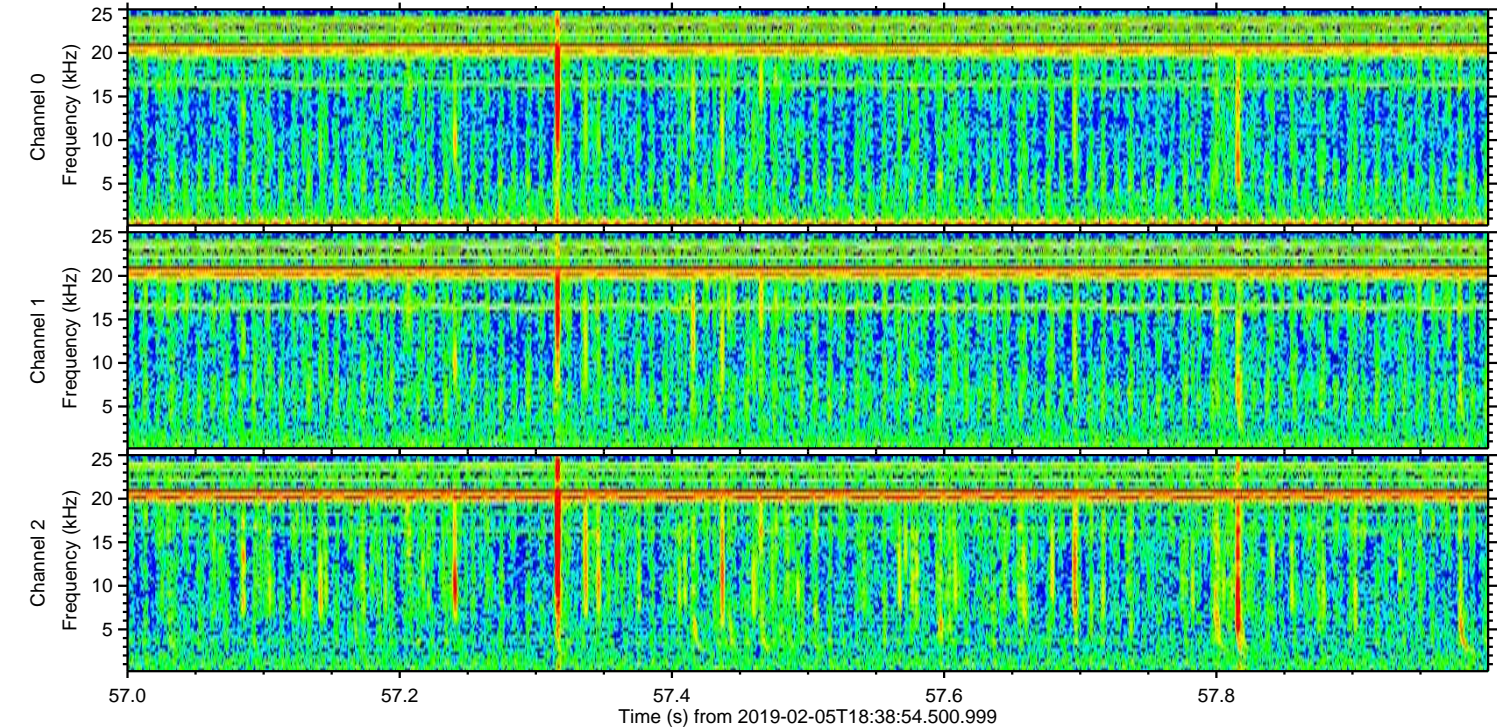
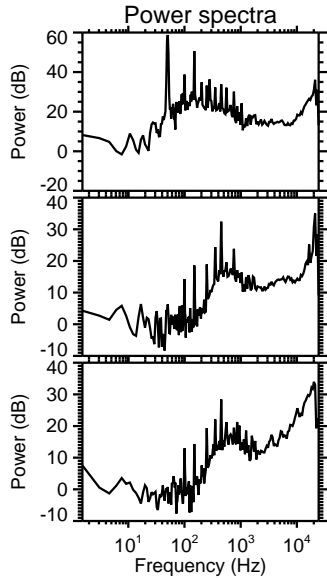
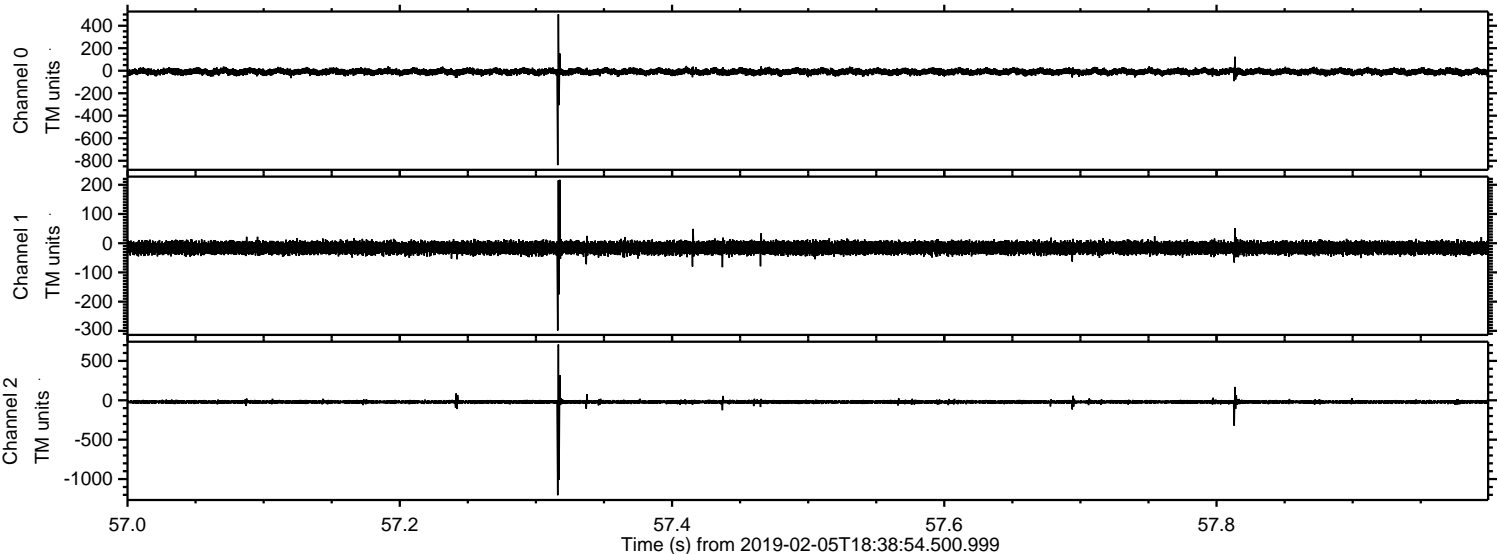
Processed Tue Feb 5 19:46:56 2019 by ELM ver.2012-10-06 from 001__elm20190205_183853__dat00.bin



Processed Tue Feb 5 19:46:57 2019 by ELM ver.2012-10-06 from 001__elm20190205_183853__dat00.bin

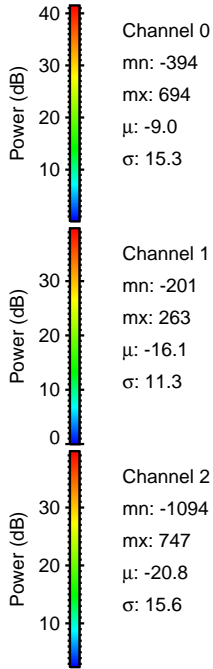
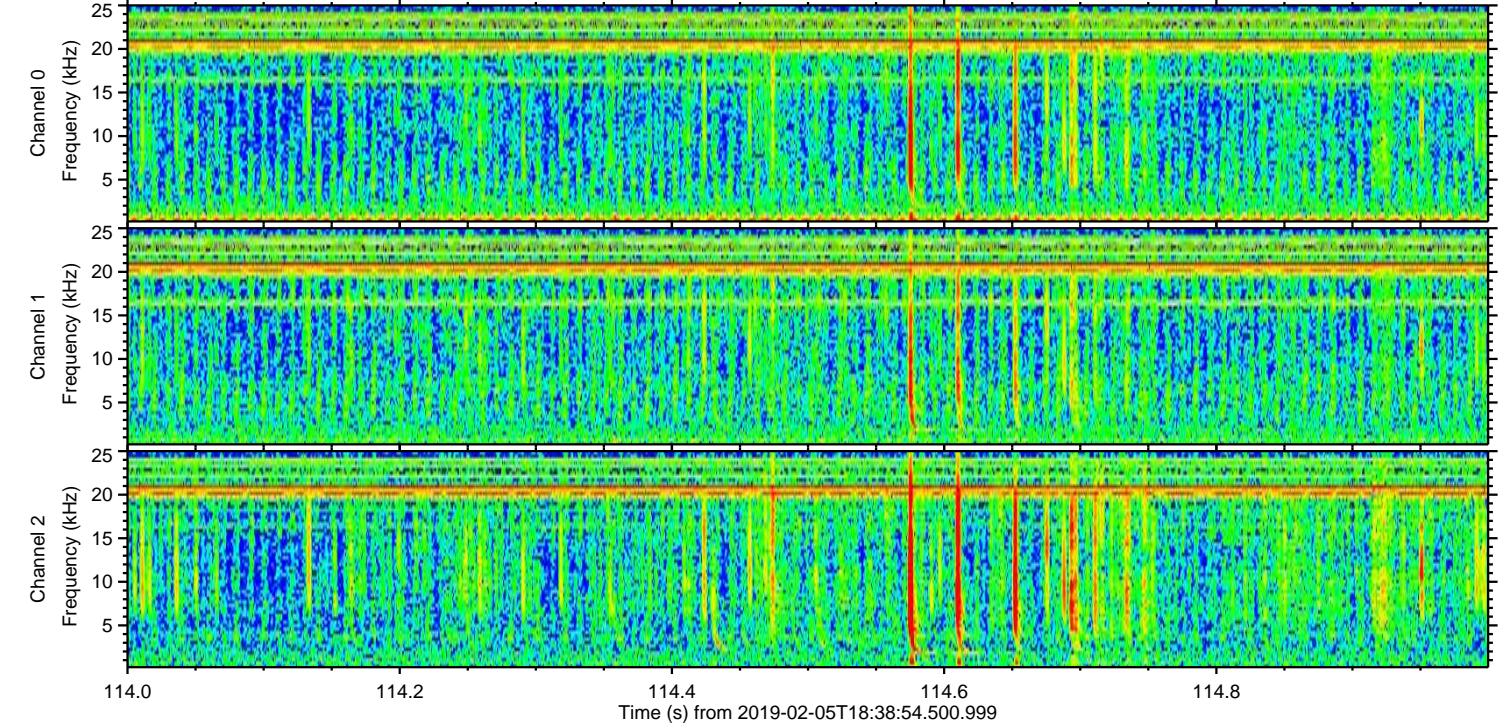
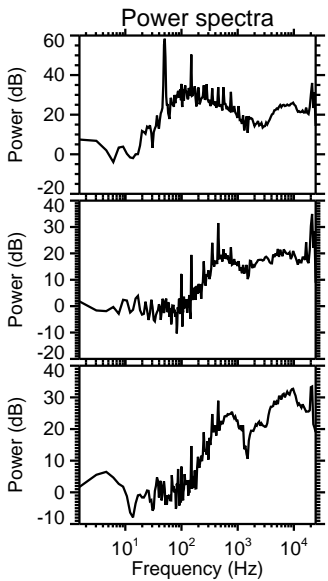
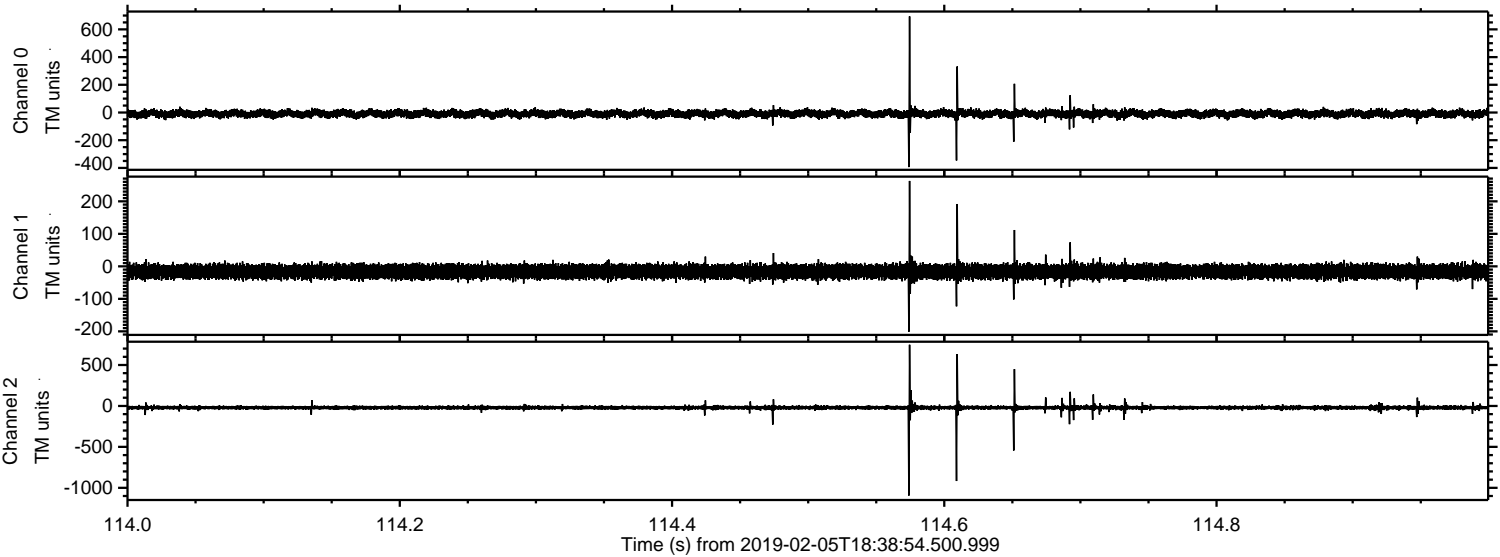


Processed Tue Feb 5 19:46:57 2019 by ELM ver.2012-10-06 from 001__elm20190205_183853__dat00.bin



ELMAVAN 3D WAVEFORMS (Measured data sampled at 50 kHz) 51000 packets of 144 samples from 2019-02-05T18:38:54.500.999. Part 115/147

Processed Tue Feb 5 19:46:58 2019 by ELM ver.2012-10-06 from 001__elm20190205_183853__dat00.bin



Channel 0
mn: -394
mx: 694
 μ : -9.0
 σ : 15.3

Channel 1
mn: -201
mx: 263
 μ : -16.1
 σ : 11.3

Channel 2
mn: -1094
mx: 747
 μ : -20.8
 σ : 15.6

Processed Tue Feb 5 19:46:59 2019 by ELM ver.2012-10-06 from 001__elm20190205_183853__dat00.bin

