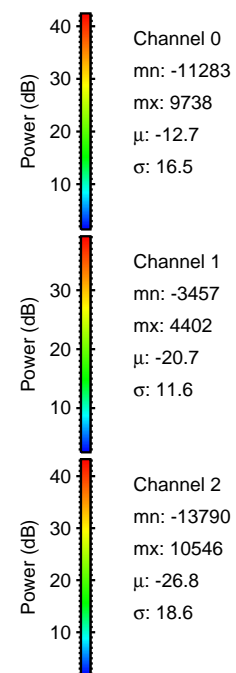
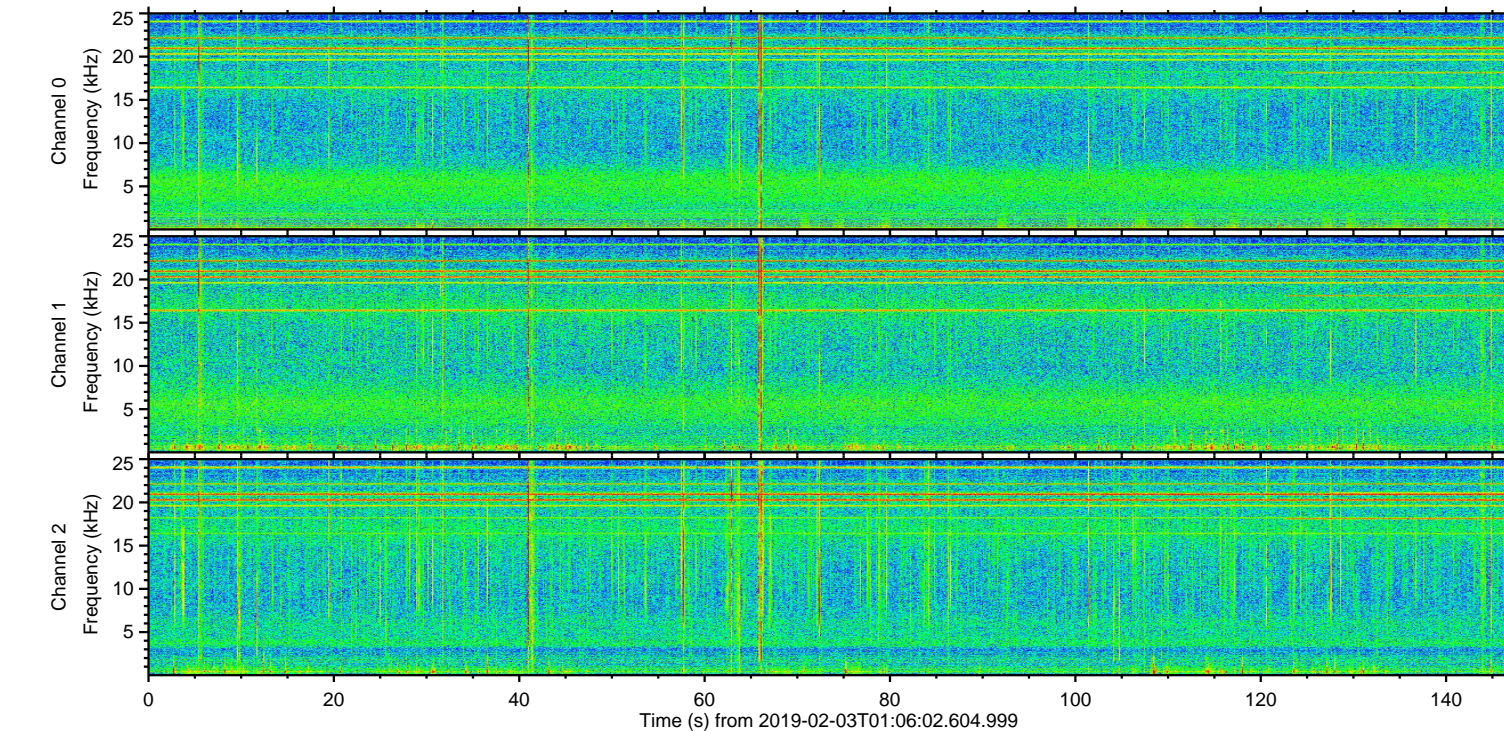
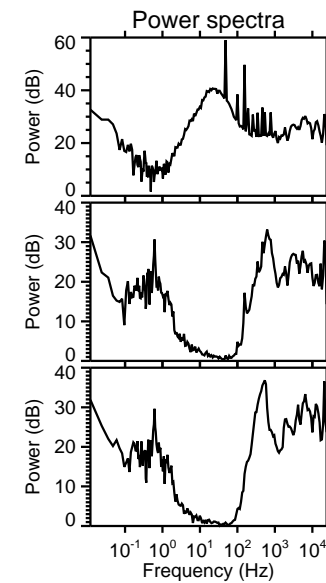
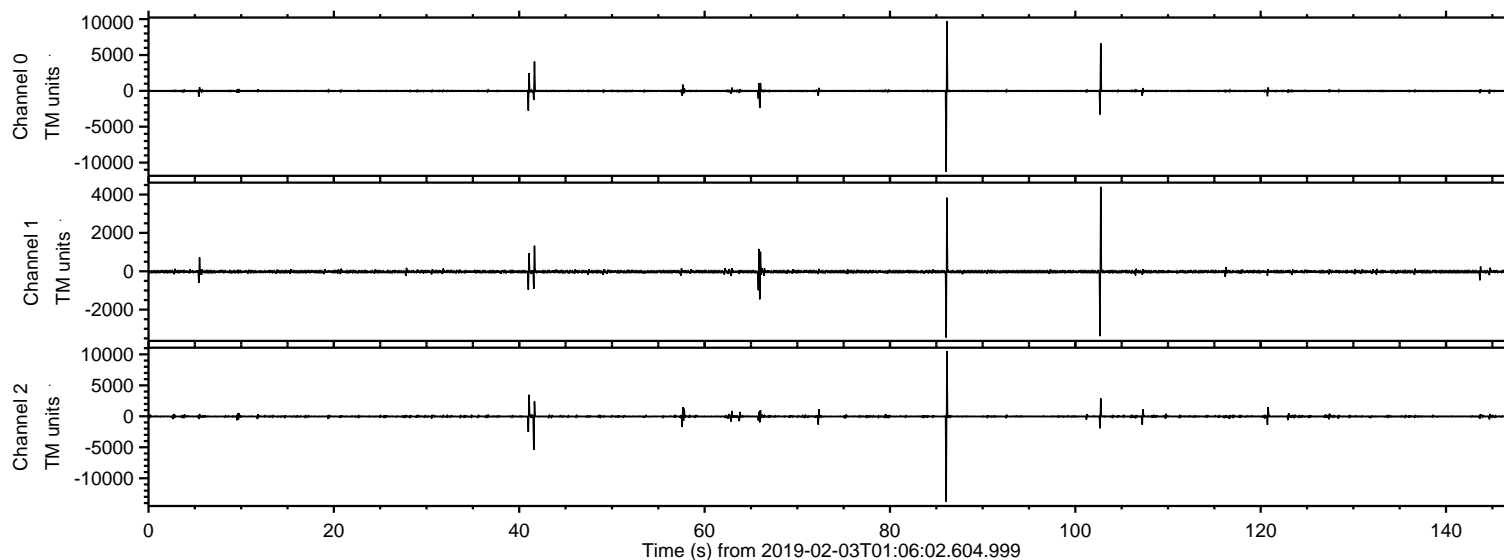


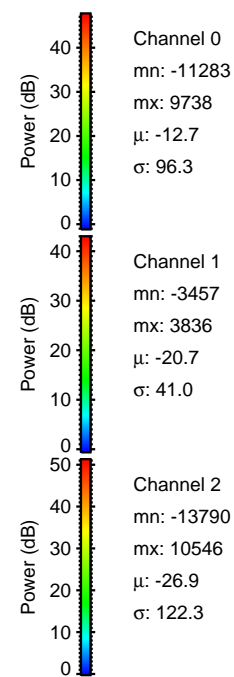
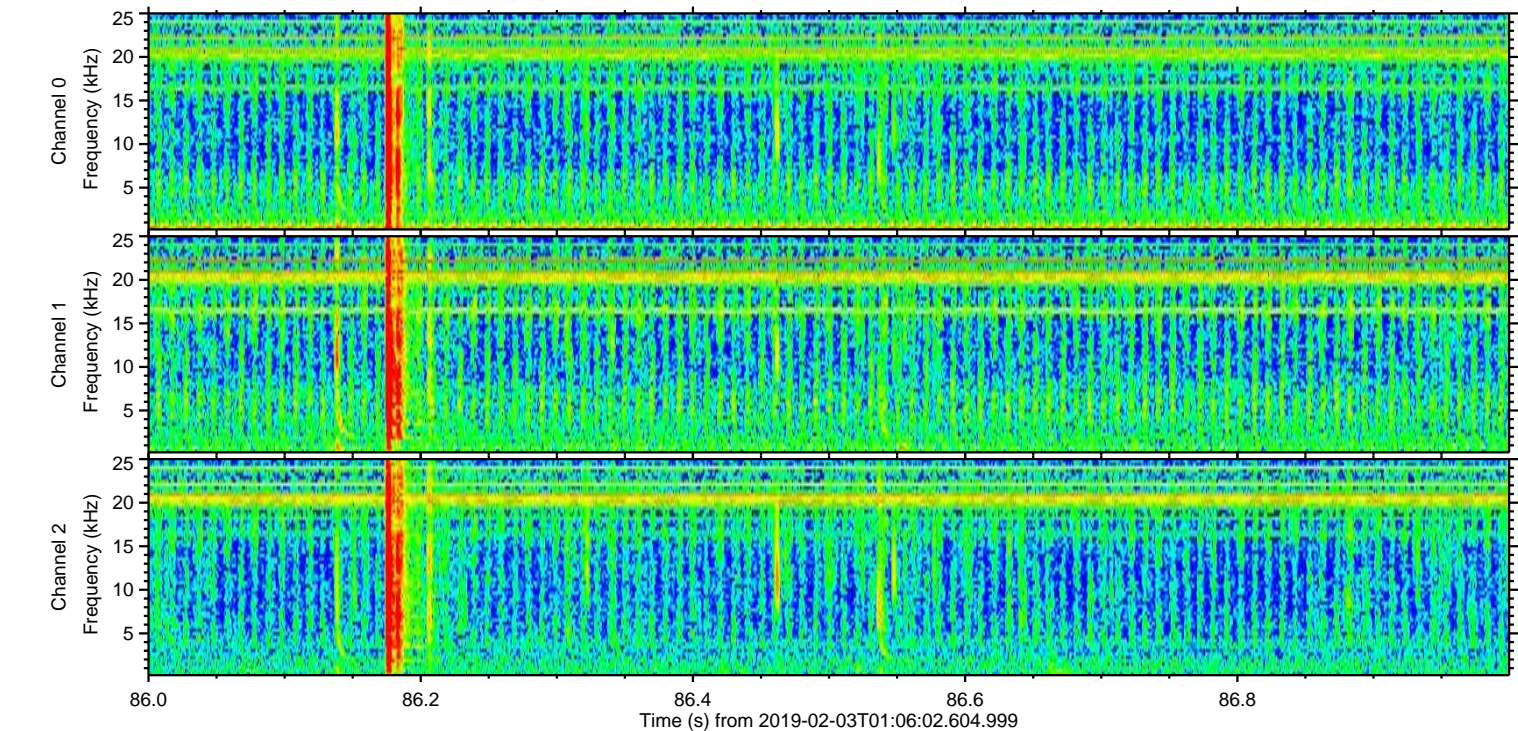
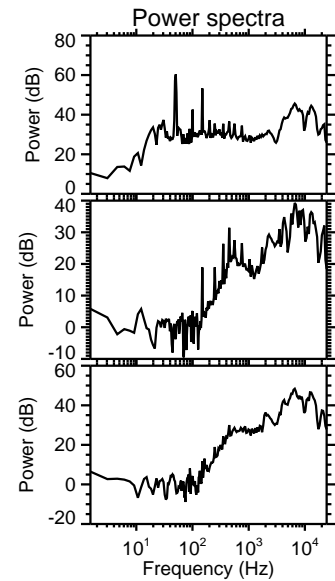
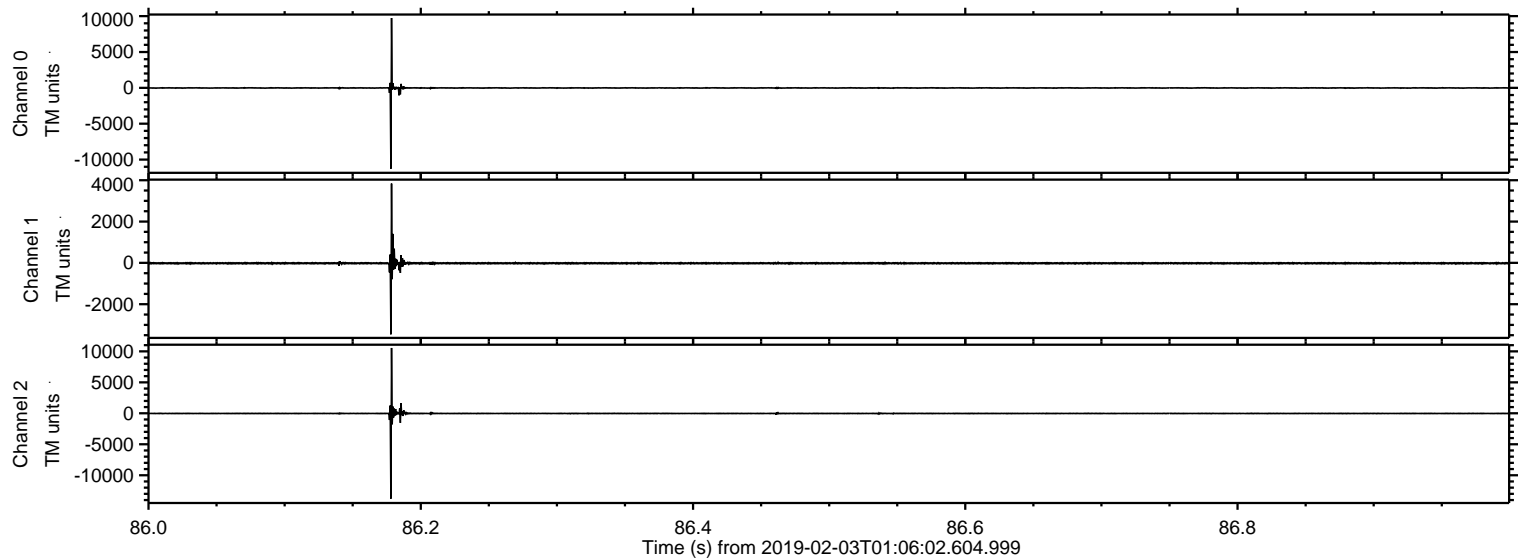
ELMAVAN 3D WAVEFORMS (Measured data sampled at 50 kHz) 51000 packets of 144 samples from 2019-02-03T01:06:02.604.999.

Processed Sun Feb 3 02:14:12 2019 by ELM ver.2012-10-06 from 001__elm20190203_010601__dat00.bin



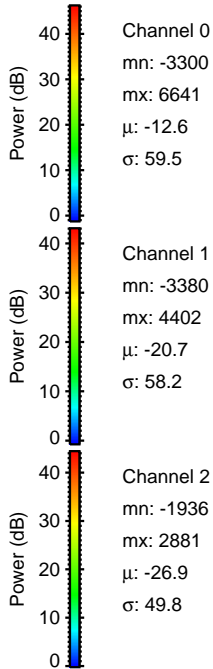
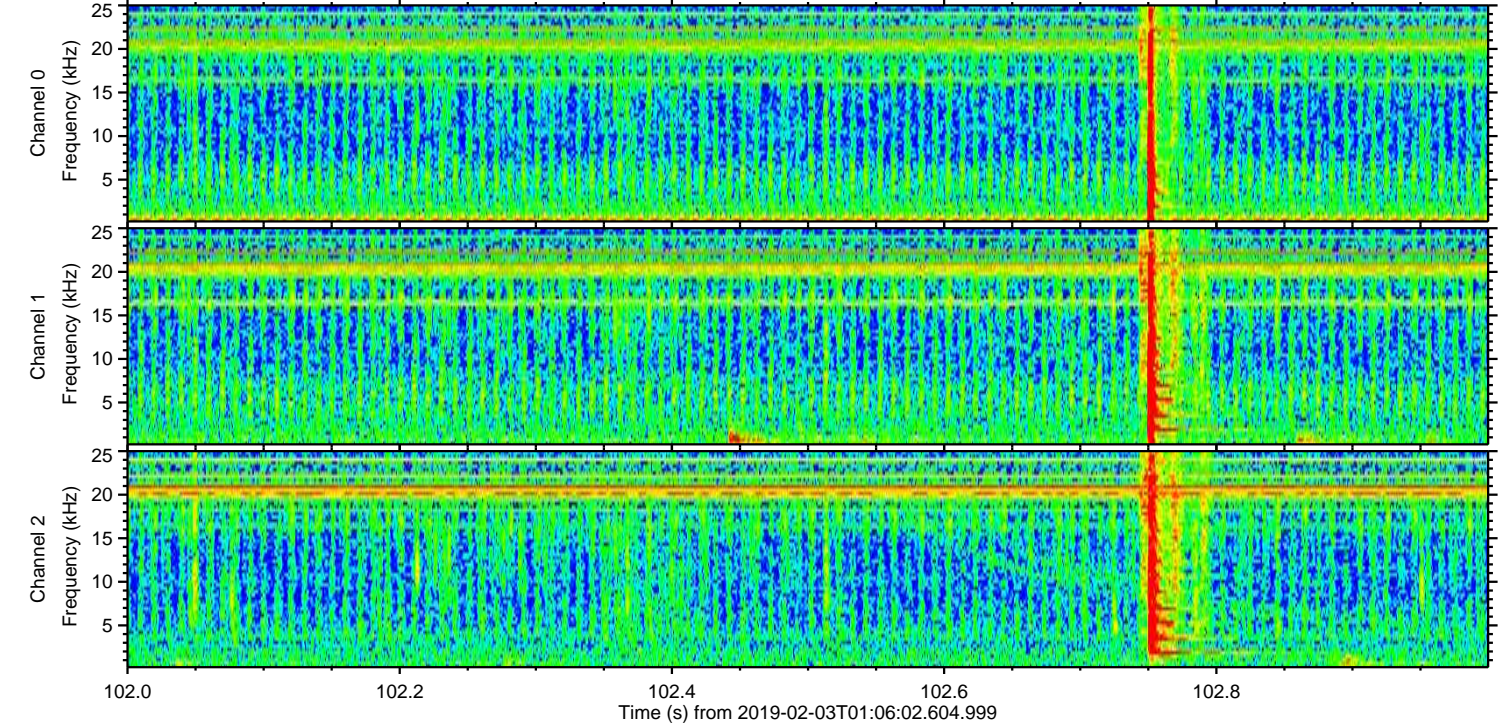
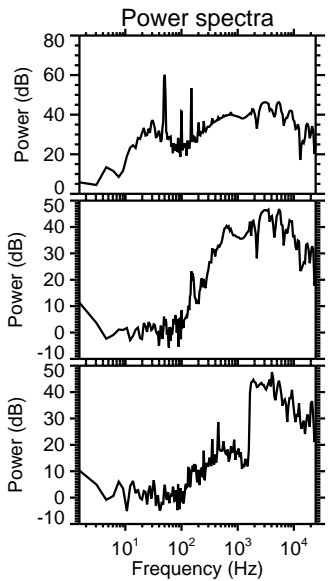
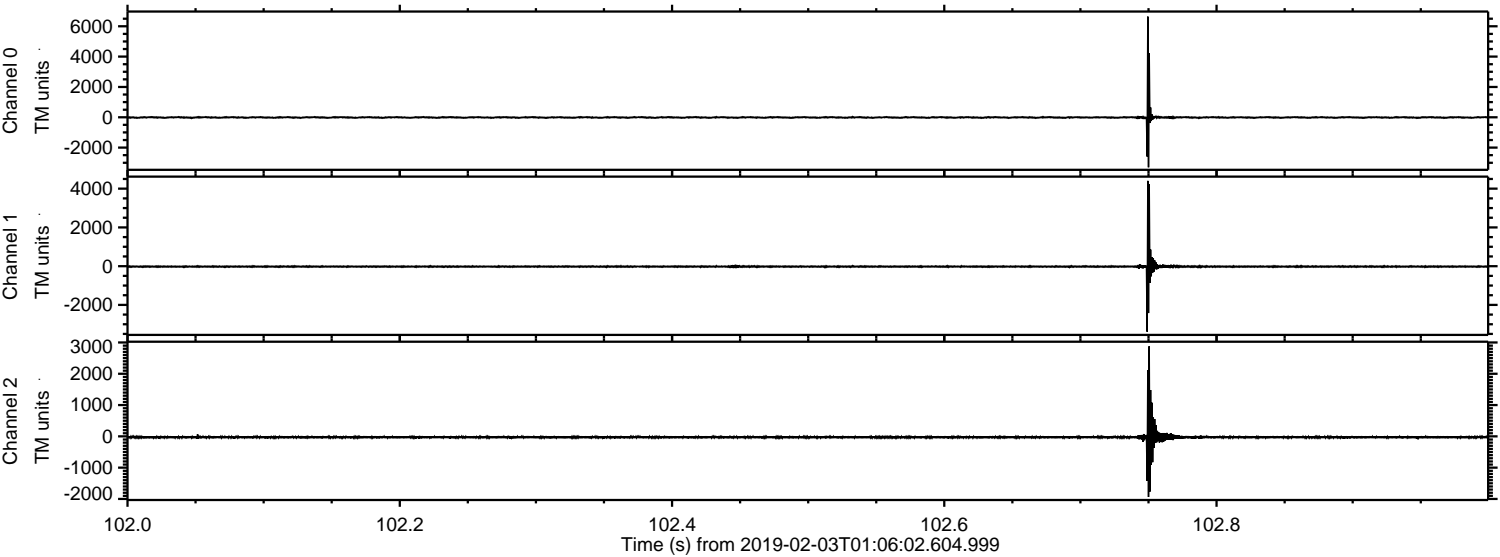
ELMAVAN 3D WAVEFORMS (Measured data sampled at 50 kHz) 51000 packets of 144 samples from 2019-02-03T01:06:02.604.999. Part 87/147

Processed Sun Feb 3 02:14:21 2019 by ELM ver.2012-10-06 from 001__elm20190203_010601__dat00.bin

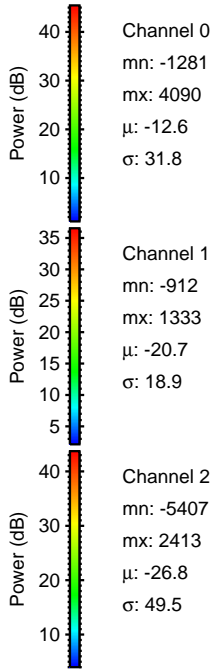
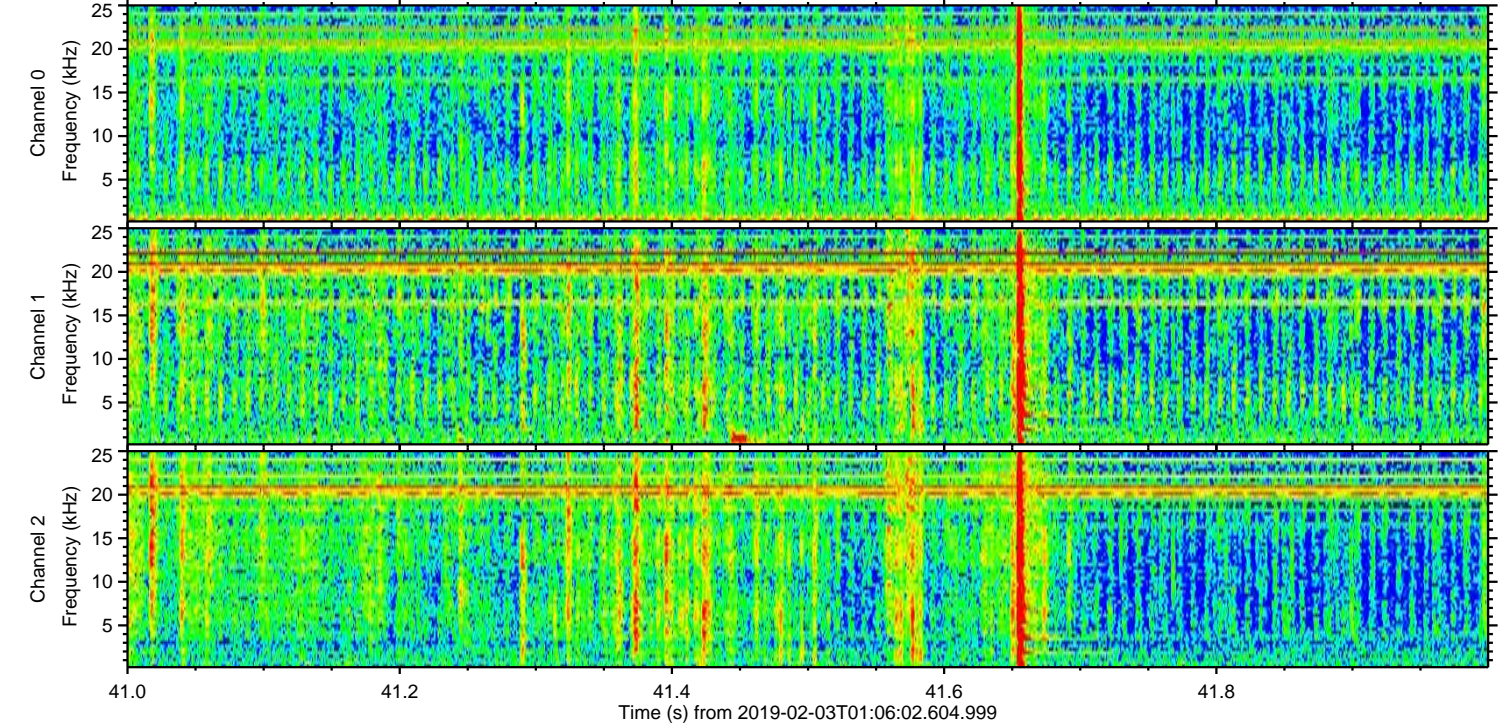
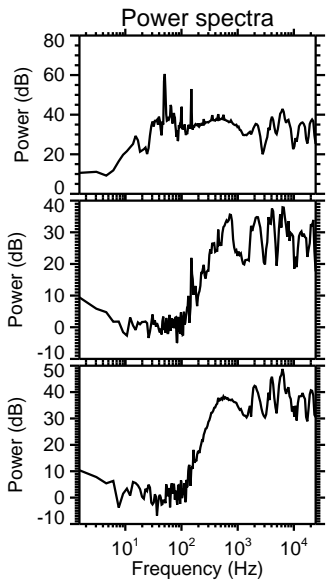
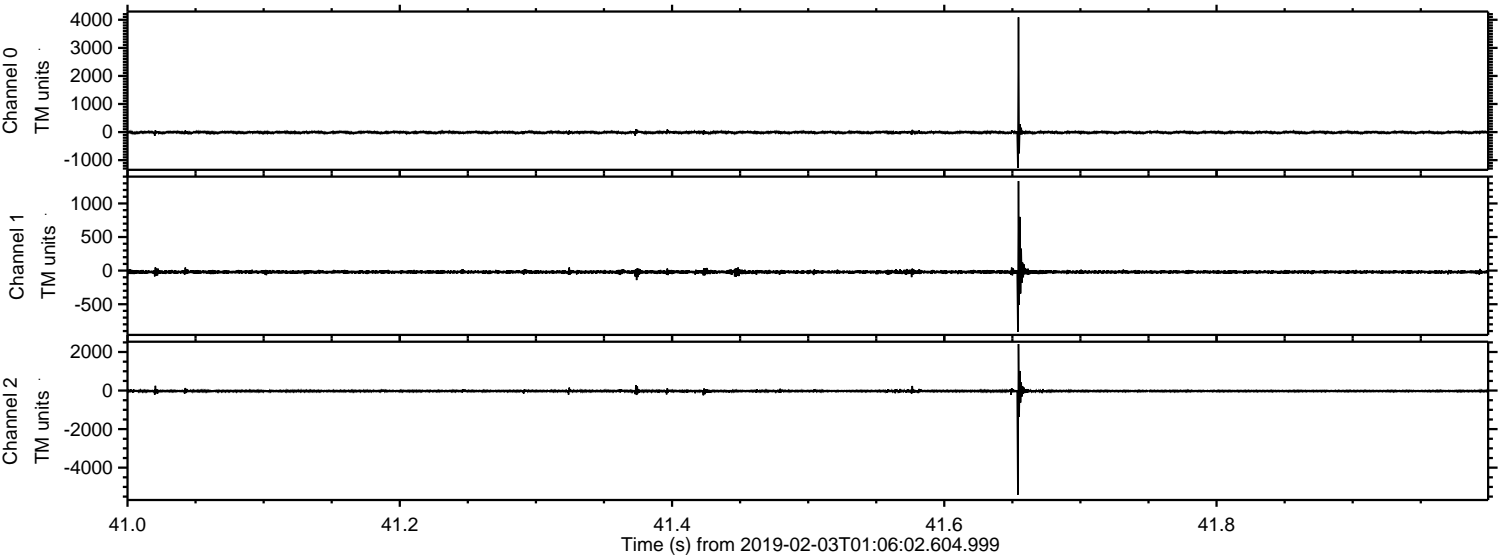


ELMAVAN 3D WAVEFORMS (Measured data sampled at 50 kHz) 51000 packets of 144 samples from 2019-02-03T01:06:02.604.999. Part 103/147

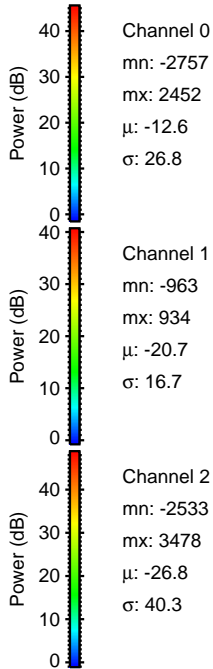
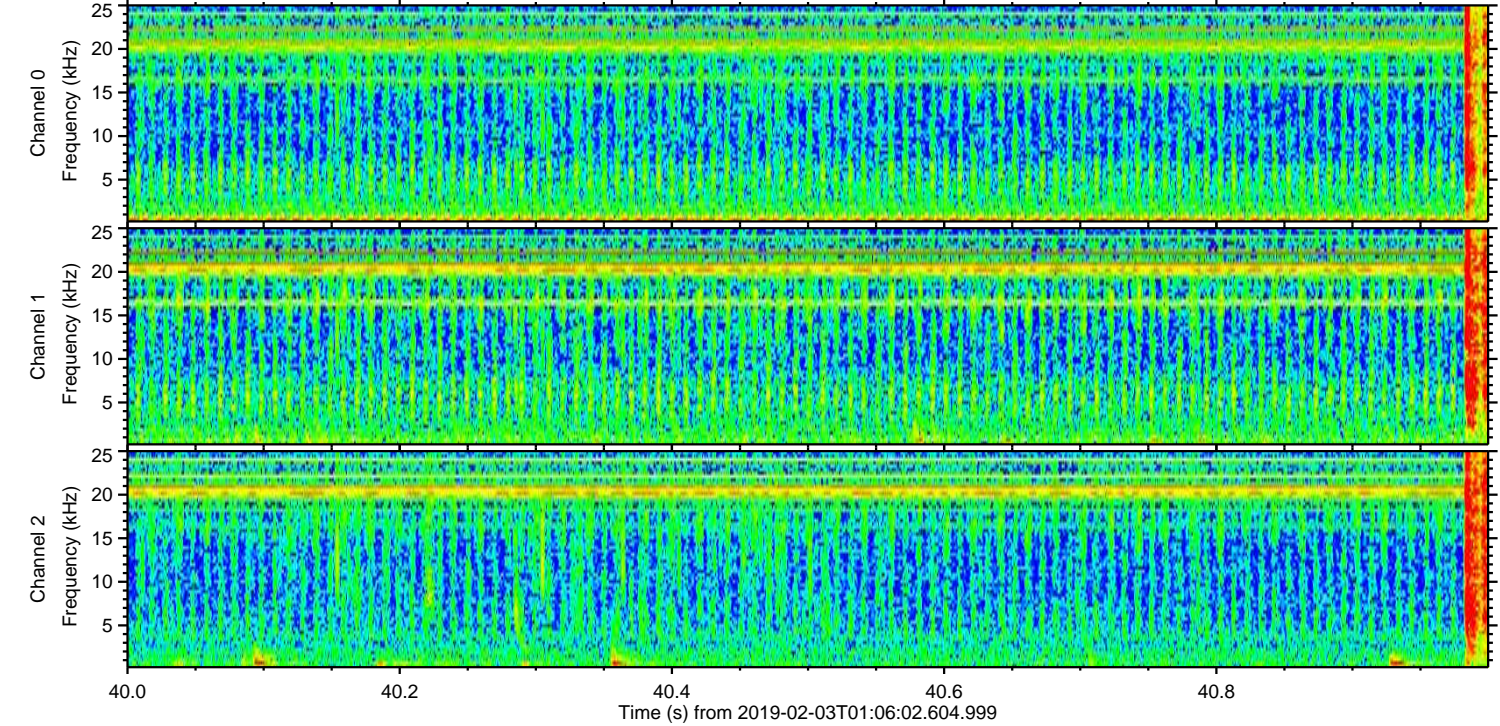
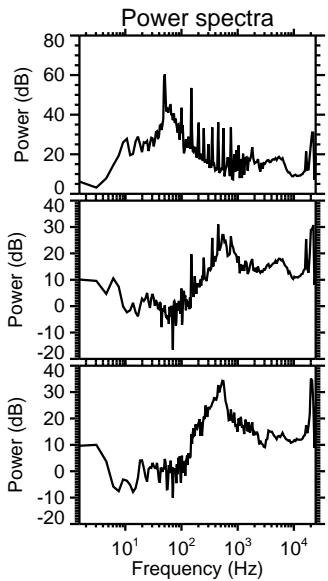
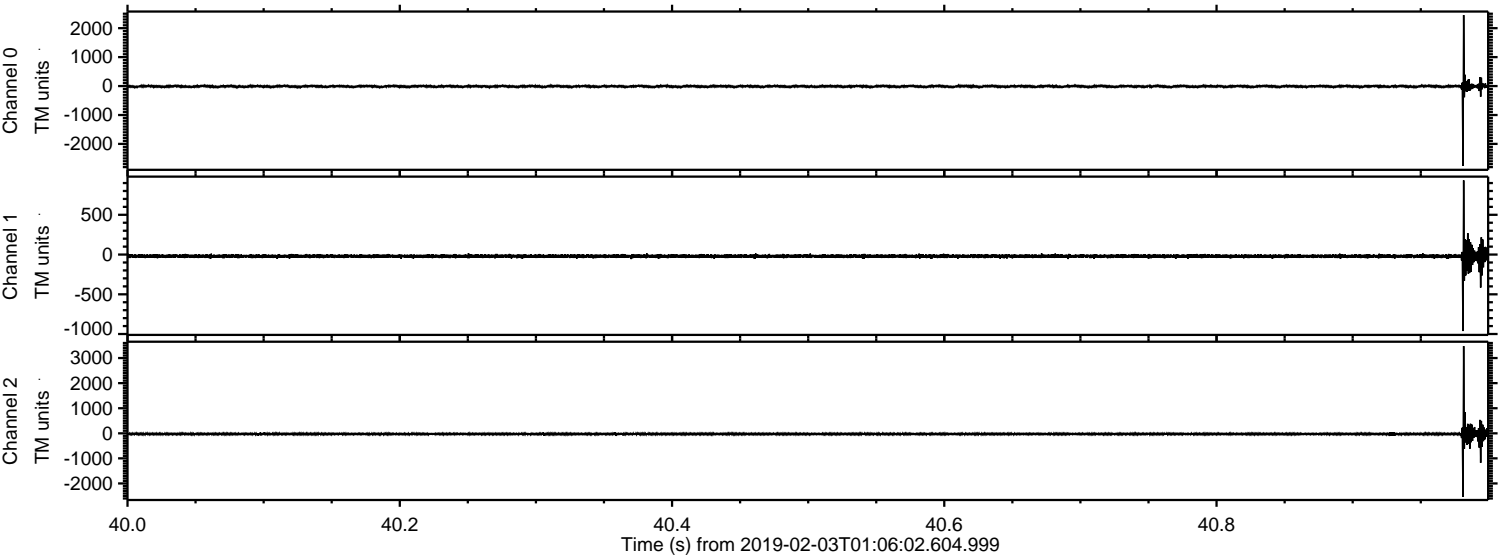
Processed Sun Feb 3 02:14:22 2019 by ELM ver.2012-10-06 from 001__elm20190203_010601__dat00.bin



Processed Sun Feb 3 02:14:23 2019 by ELM ver.2012-10-06 from 001__elm20190203_010601__dat00.bin

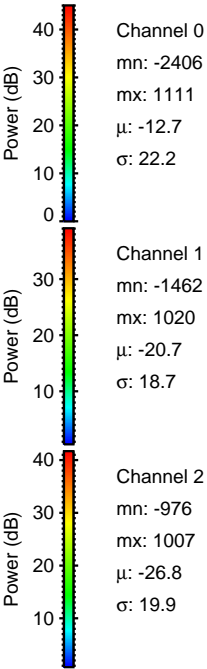
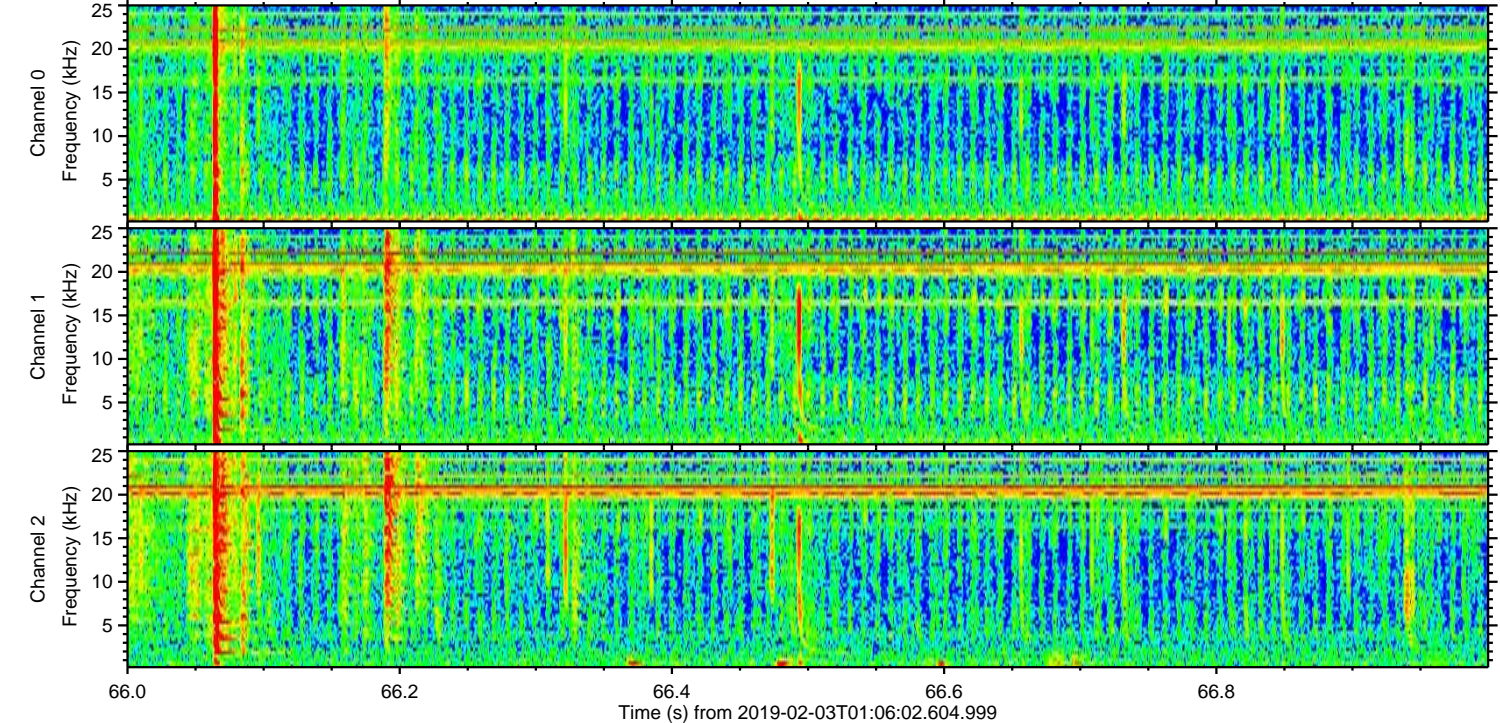
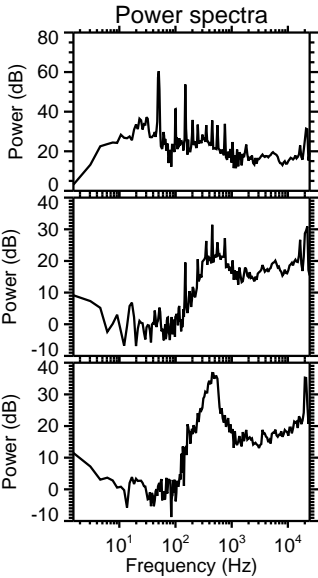
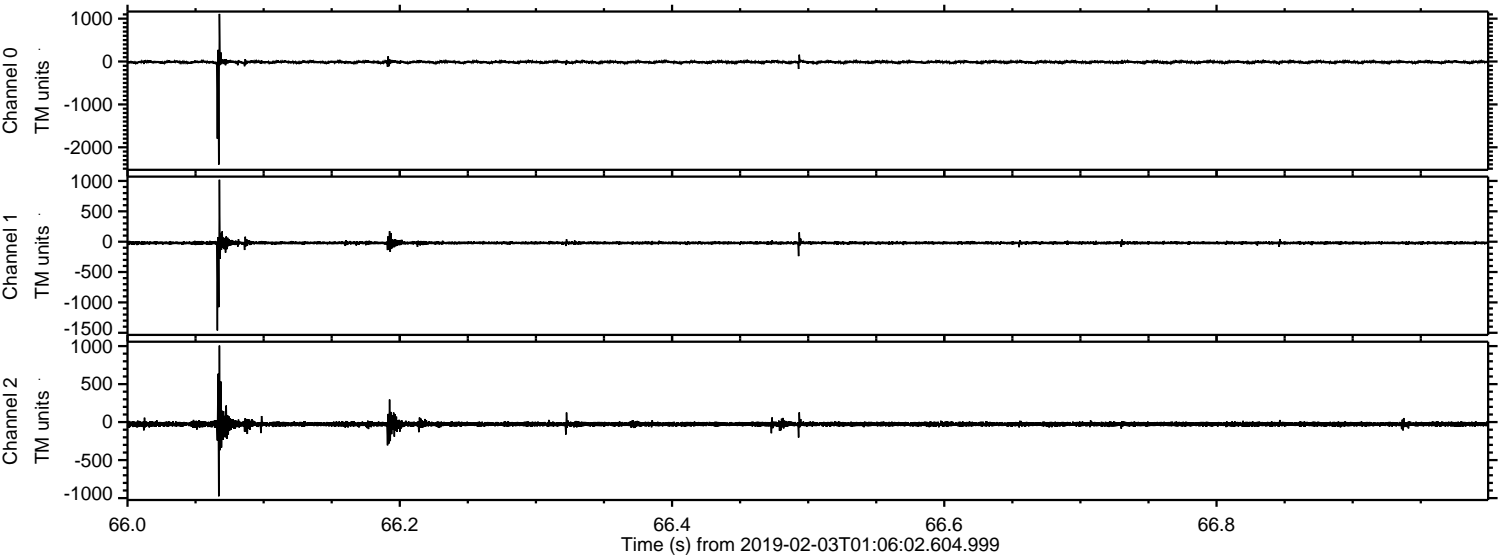


Processed Sun Feb 3 02:14:24 2019 by ELM ver.2012-10-06 from 001__elm20190203_010601__dat00.bin

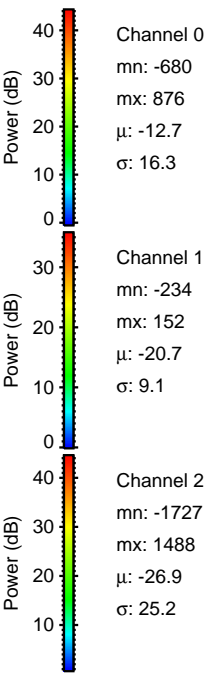
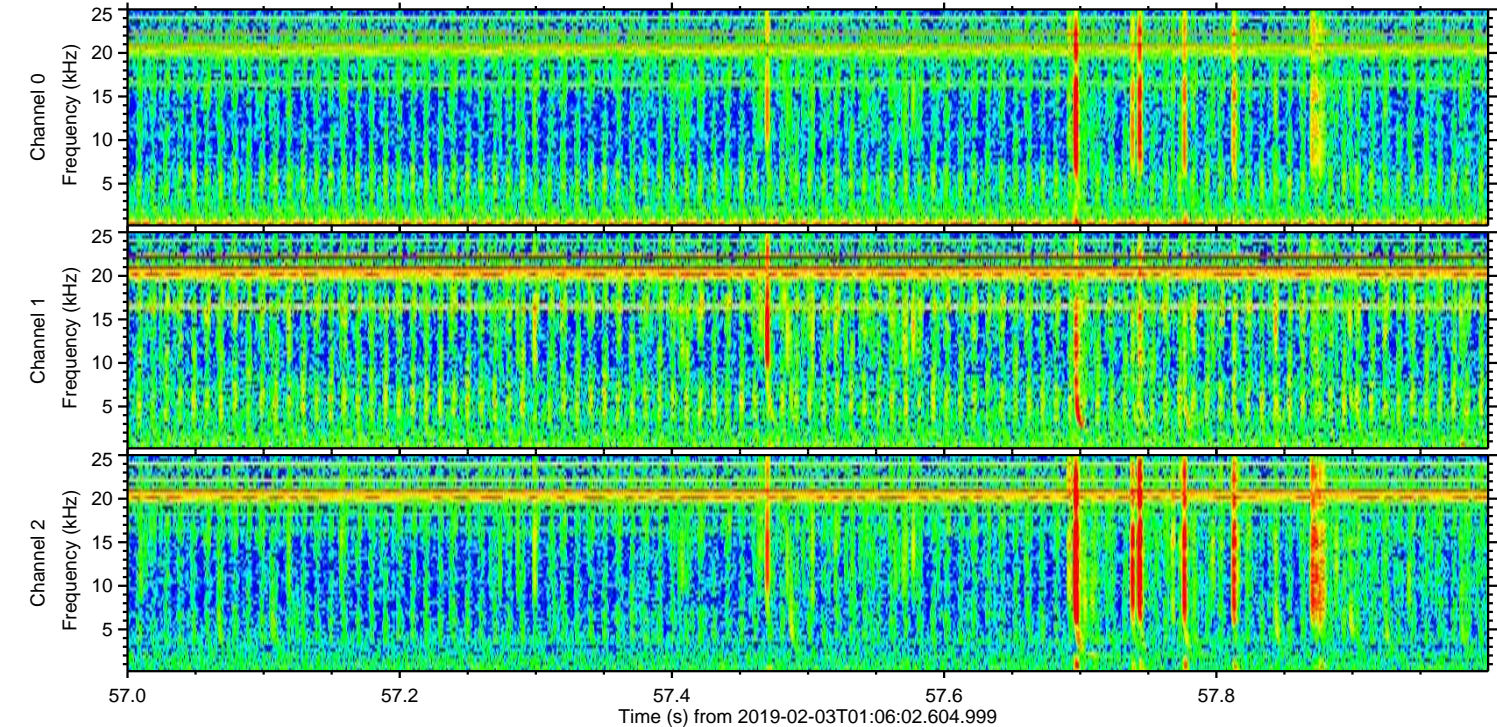
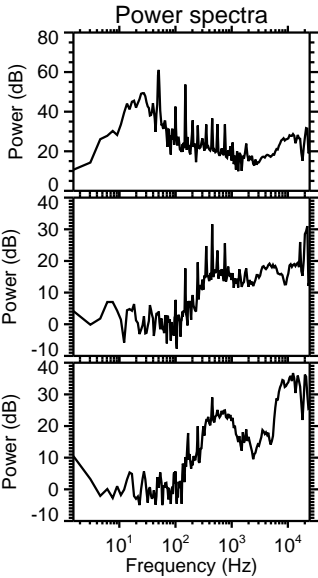
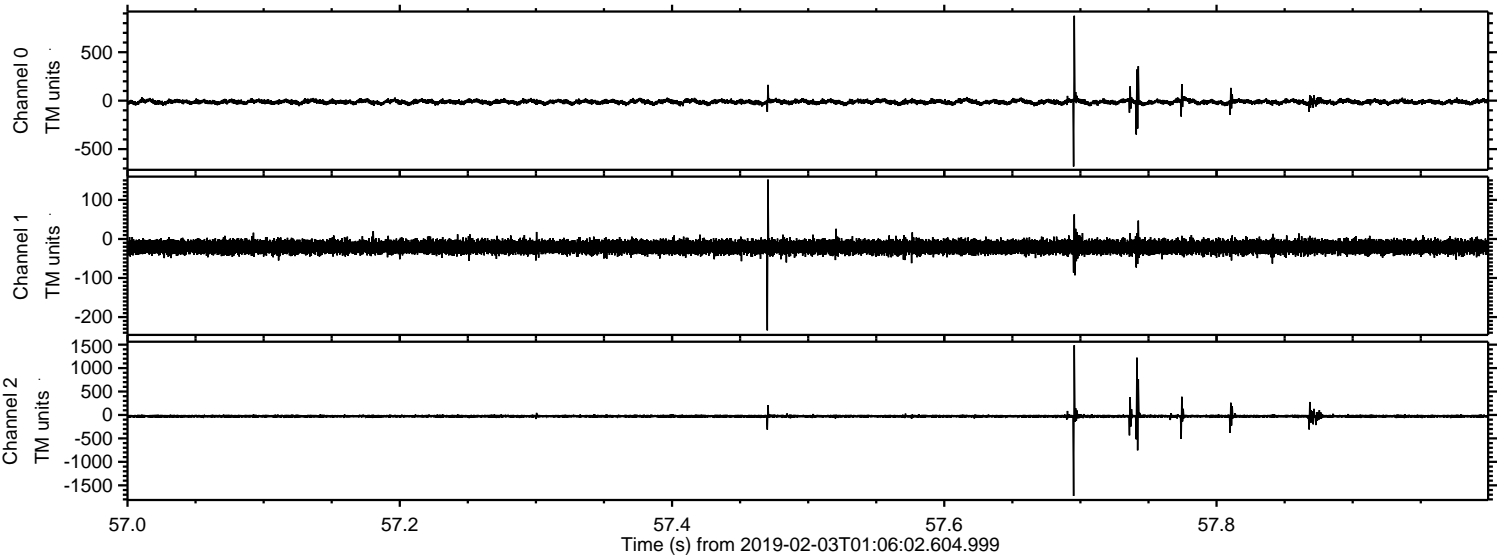


ELMAVAN 3D WAVEFORMS (Measured data sampled at 50 kHz) 51000 packets of 144 samples from 2019-02-03T01:06:02.604.999. Part 67/147

Processed Sun Feb 3 02:14:24 2019 by ELM ver.2012-10-06 from 001__elm20190203_010601__dat00.bin

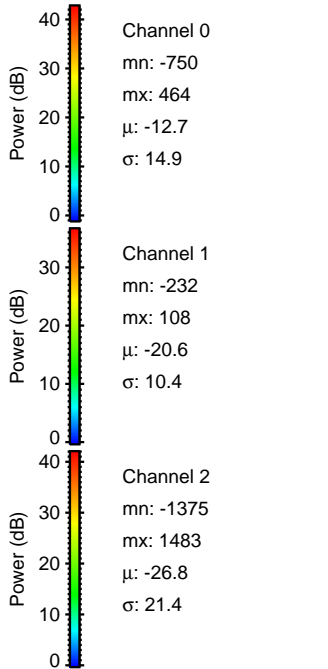
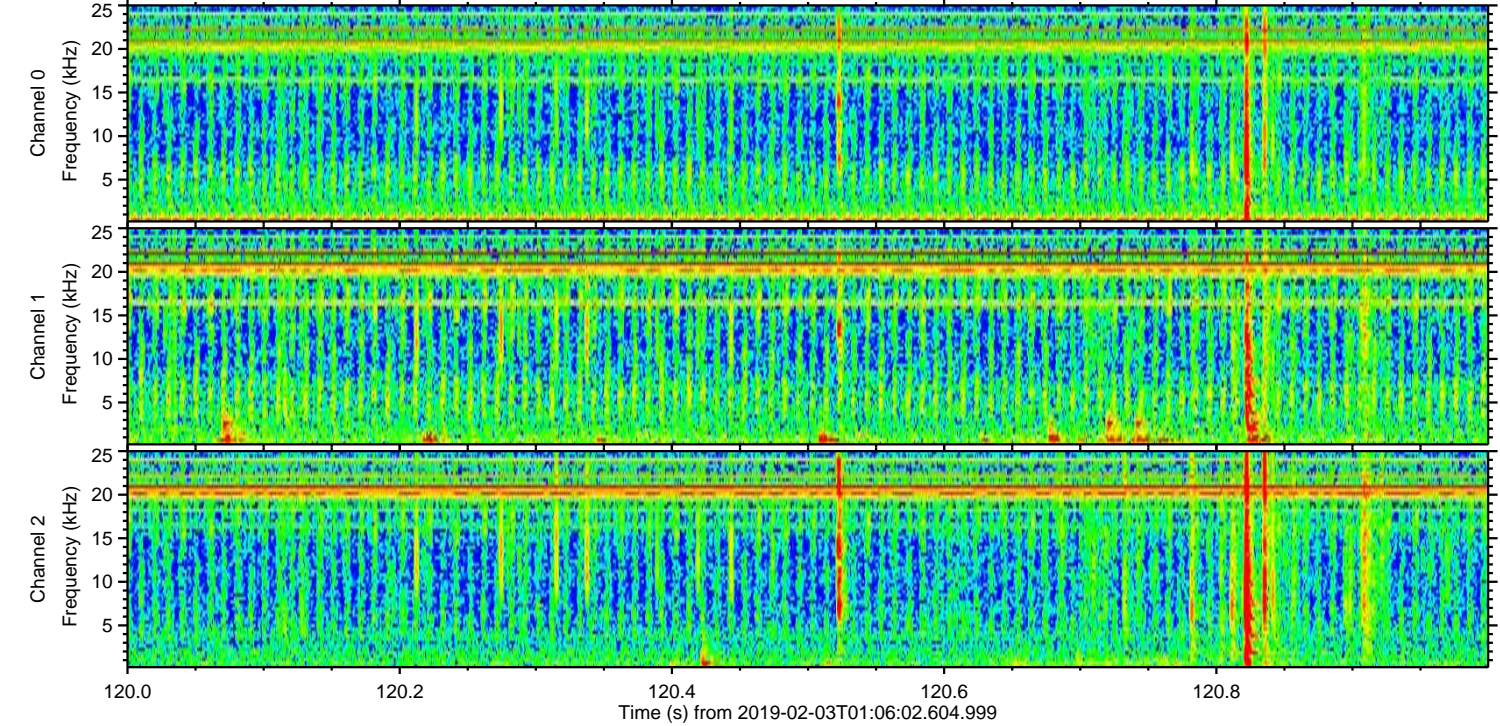
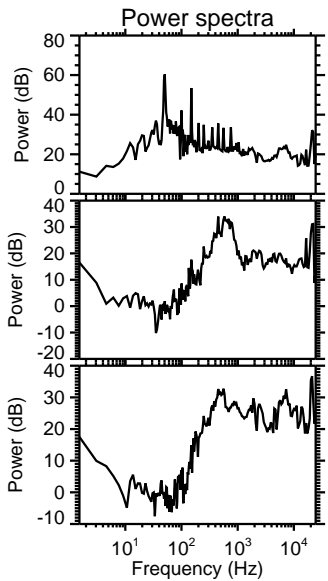
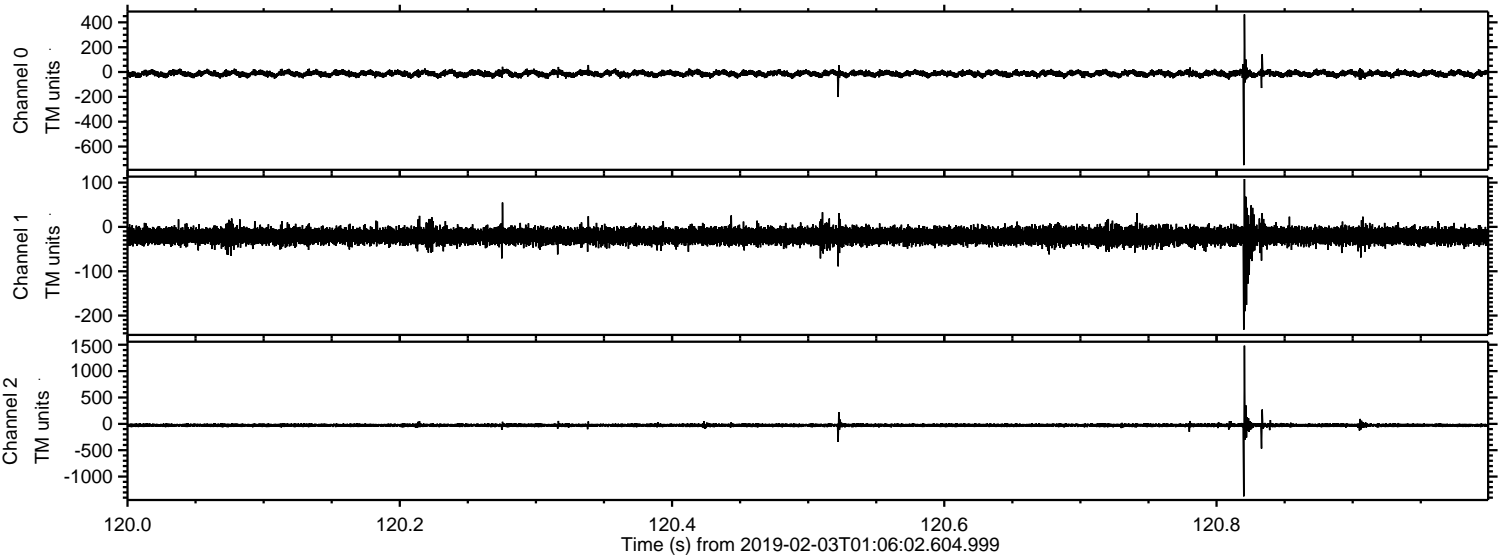


Processed Sun Feb 3 02:14:25 2019 by ELM ver.2012-10-06 from 001__elm20190203_010601__dat00.bin

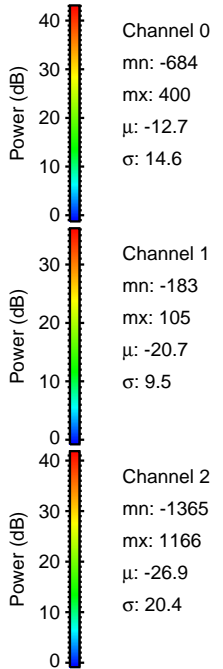
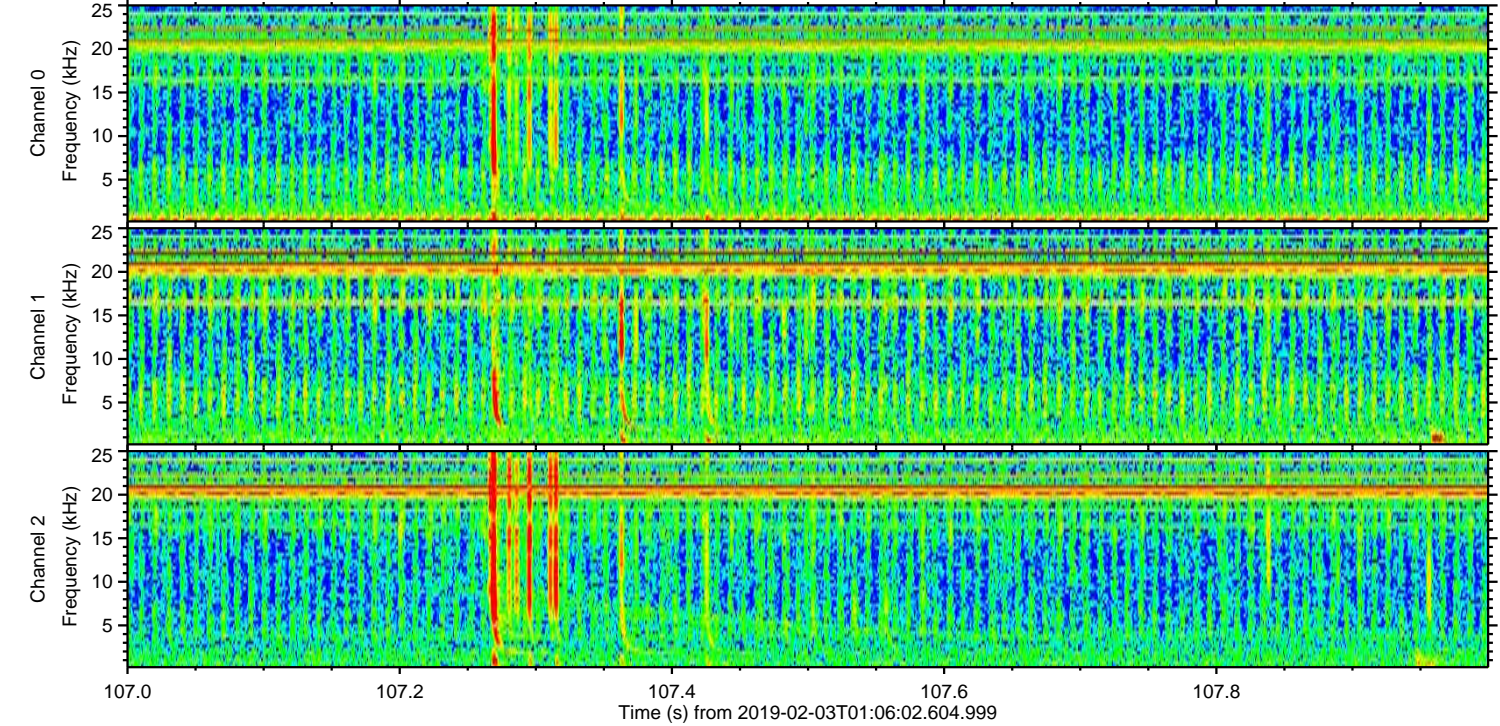
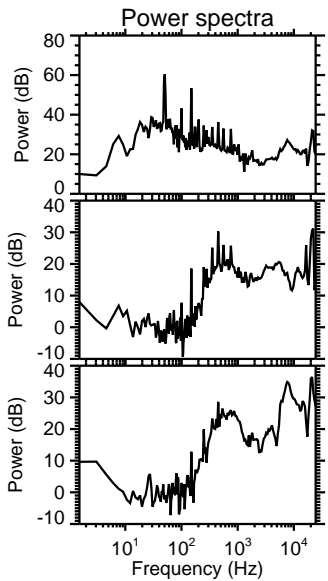
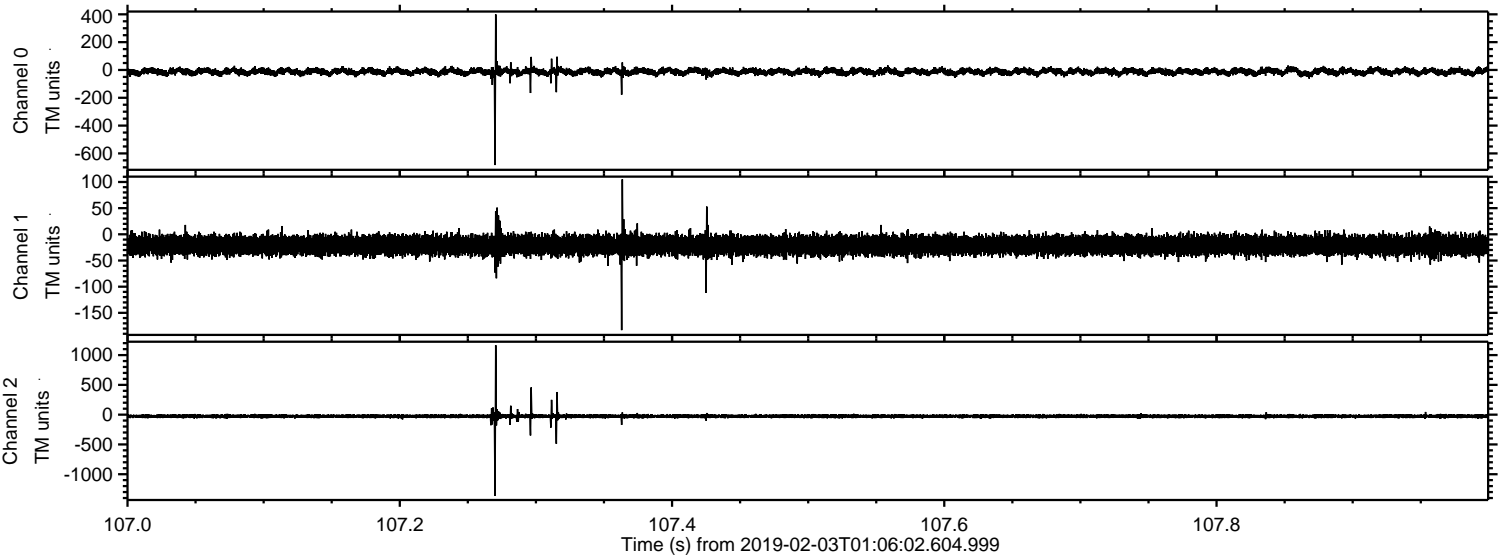


ELMAVAN 3D WAVEFORMS (Measured data sampled at 50 kHz) 51000 packets of 144 samples from 2019-02-03T01:06:02.604.999. Part 121/147

Processed Sun Feb 3 02:14:26 2019 by ELM ver.2012-10-06 from 001__elm20190203_010601__dat00.bin



Processed Sun Feb 3 02:14:27 2019 by ELM ver.2012-10-06 from 001__elm20190203_010601__dat00.bin



Channel 0
mn: -684
mx: 400
 μ : -12.7
 σ : 14.6

Channel 1
mn: -183
mx: 105
 μ : -20.7
 σ : 9.5

Channel 2
mn: -1365
mx: 1166
 μ : -26.9
 σ : 20.4

Processed Sun Feb 3 02:14:28 2019 by ELM ver.2012-10-06 from 001__elm20190203_010601__dat00.bin

