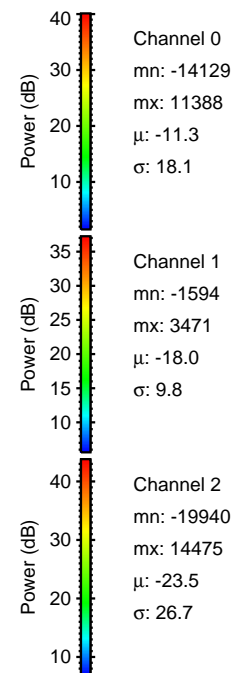
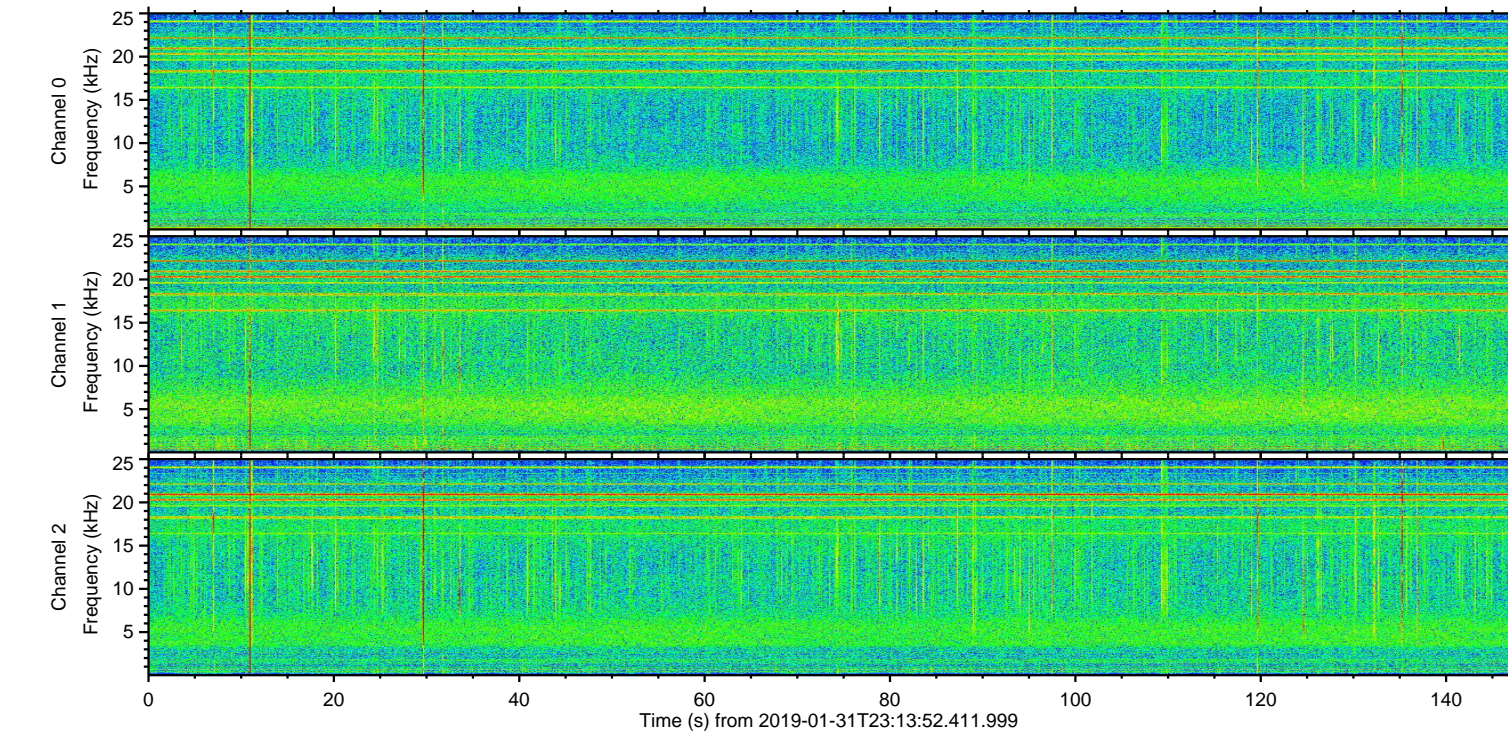
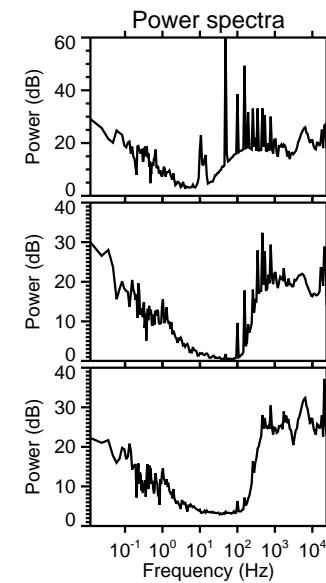
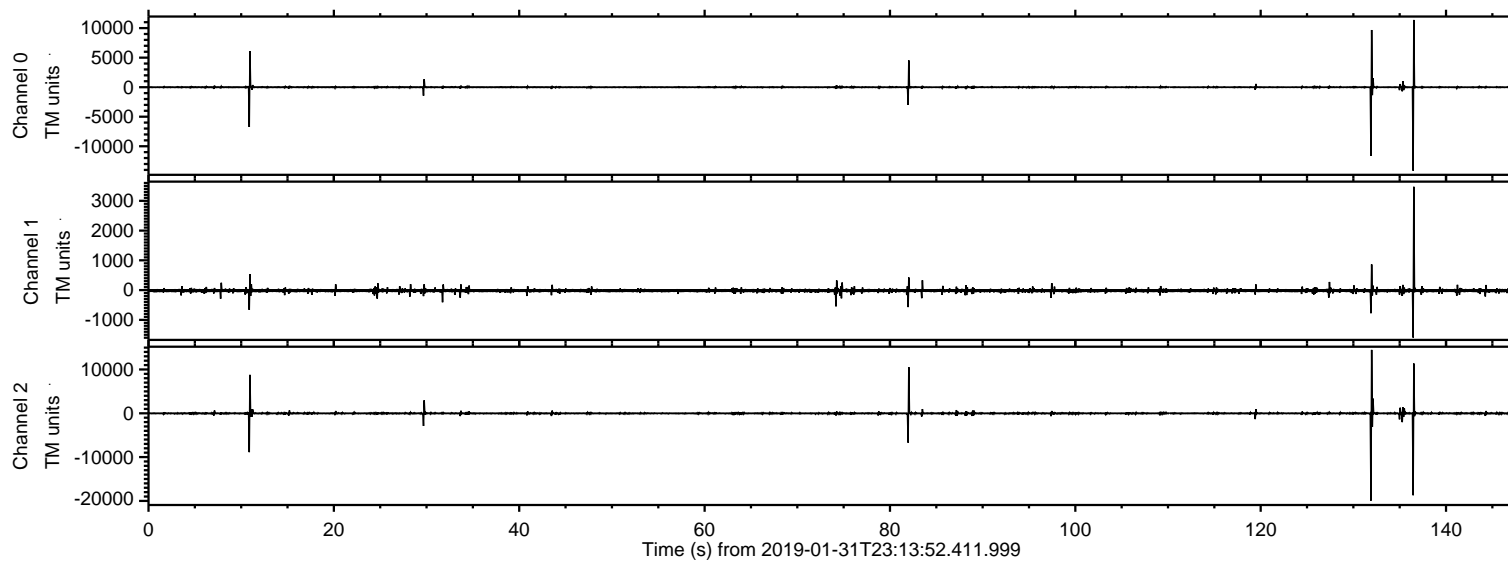


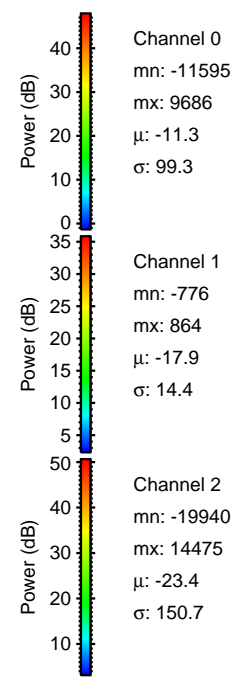
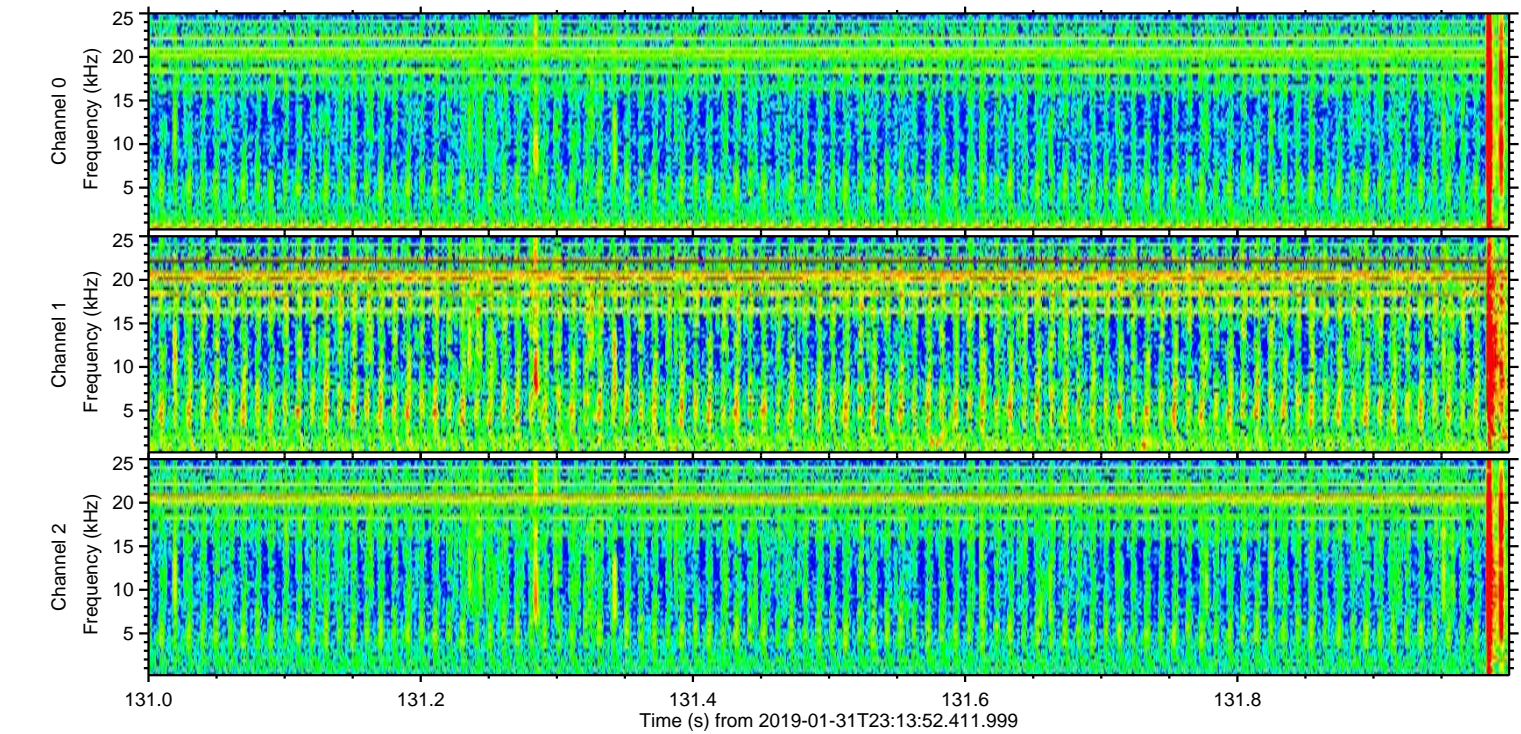
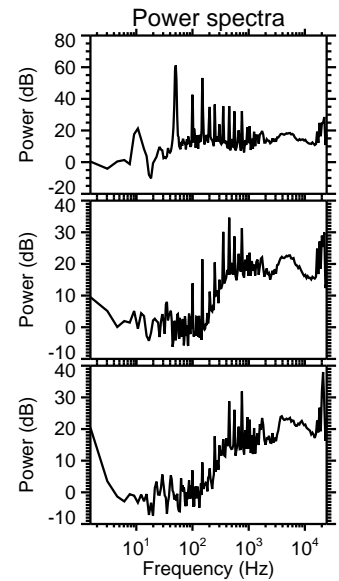
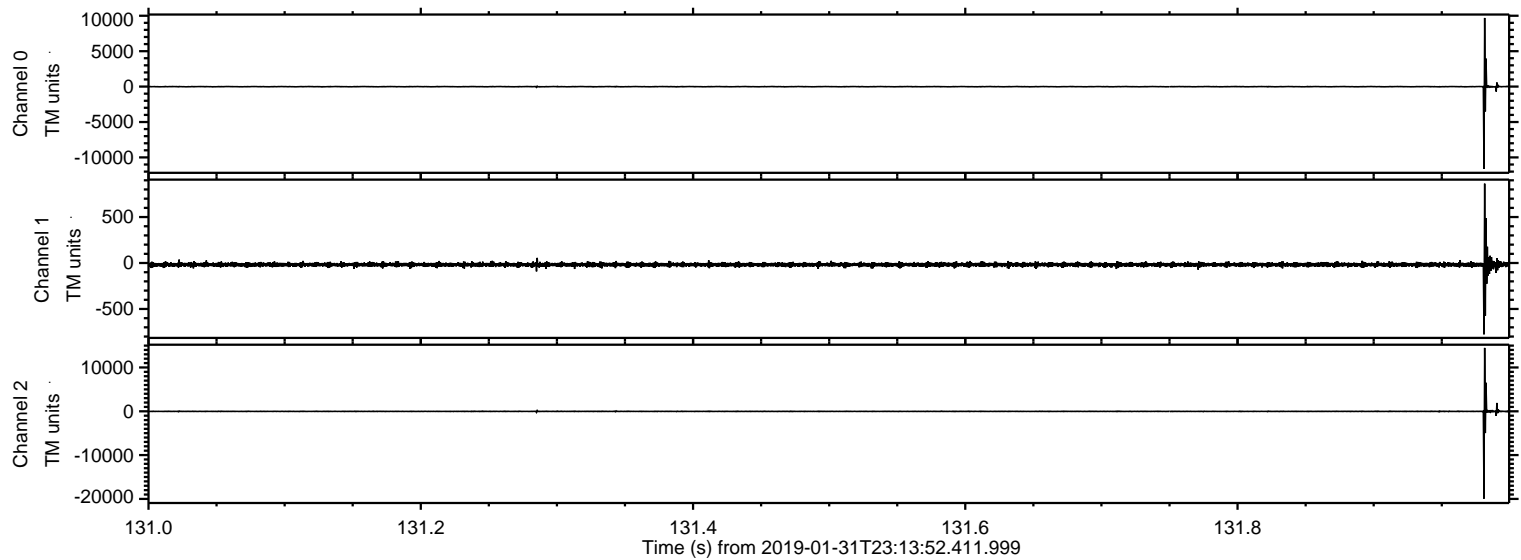
ELMAVAN 3D WAVEFORMS (Measured data sampled at 50 kHz) 51000 packets of 144 samples from 2019-01-31T23:13:52.411.999.

Processed Fri Feb 1 00:21:25 2019 by ELM ver.2012-10-06 from 001__elm20190131_231351__dat00.bin



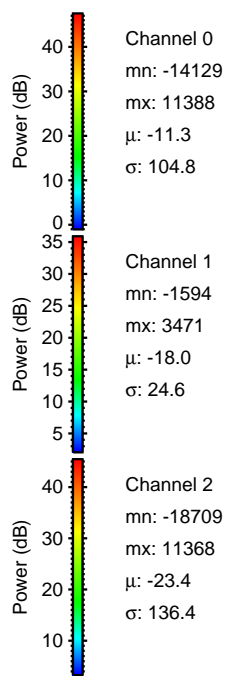
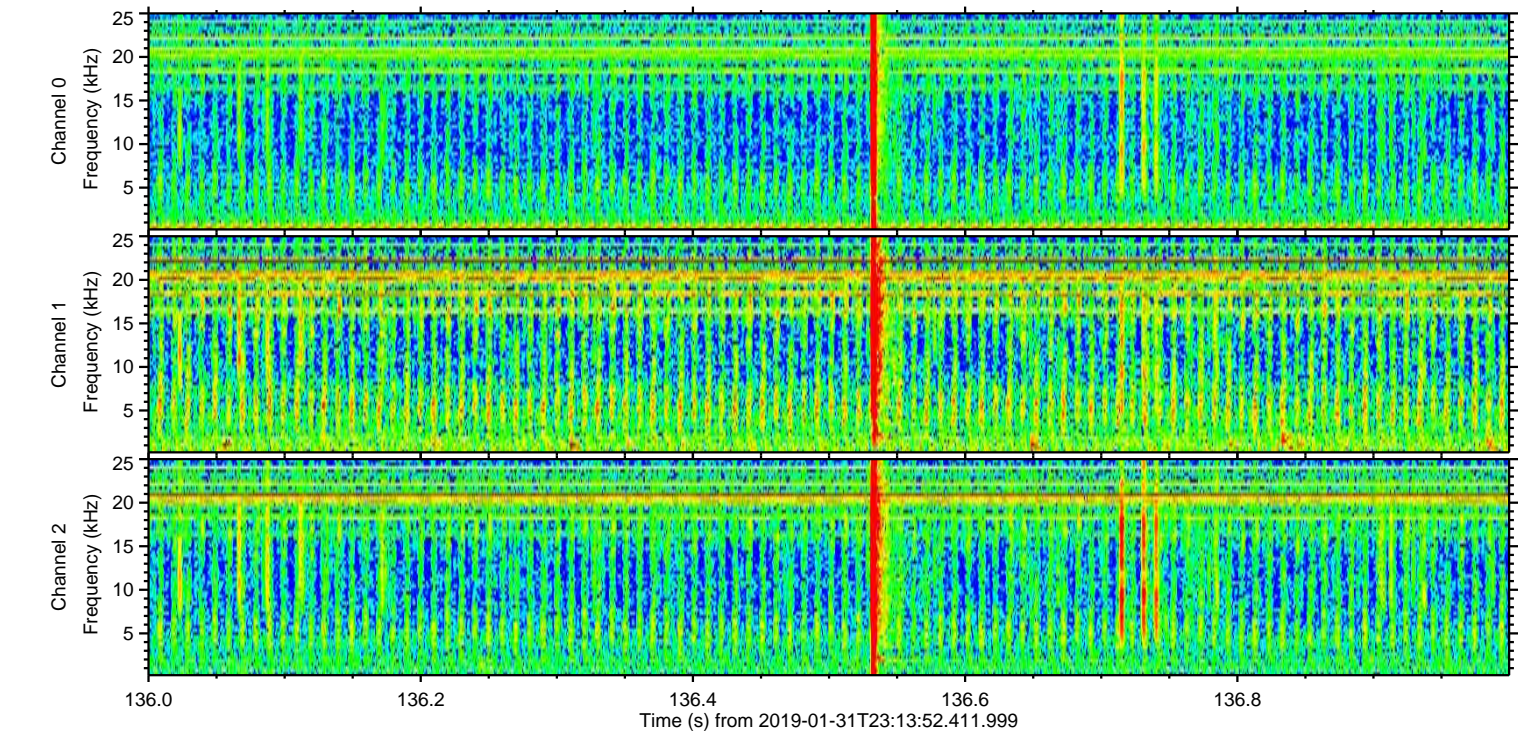
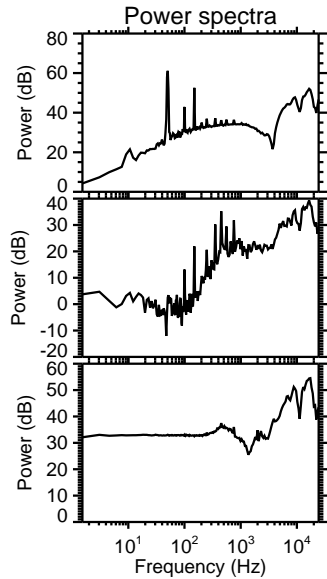
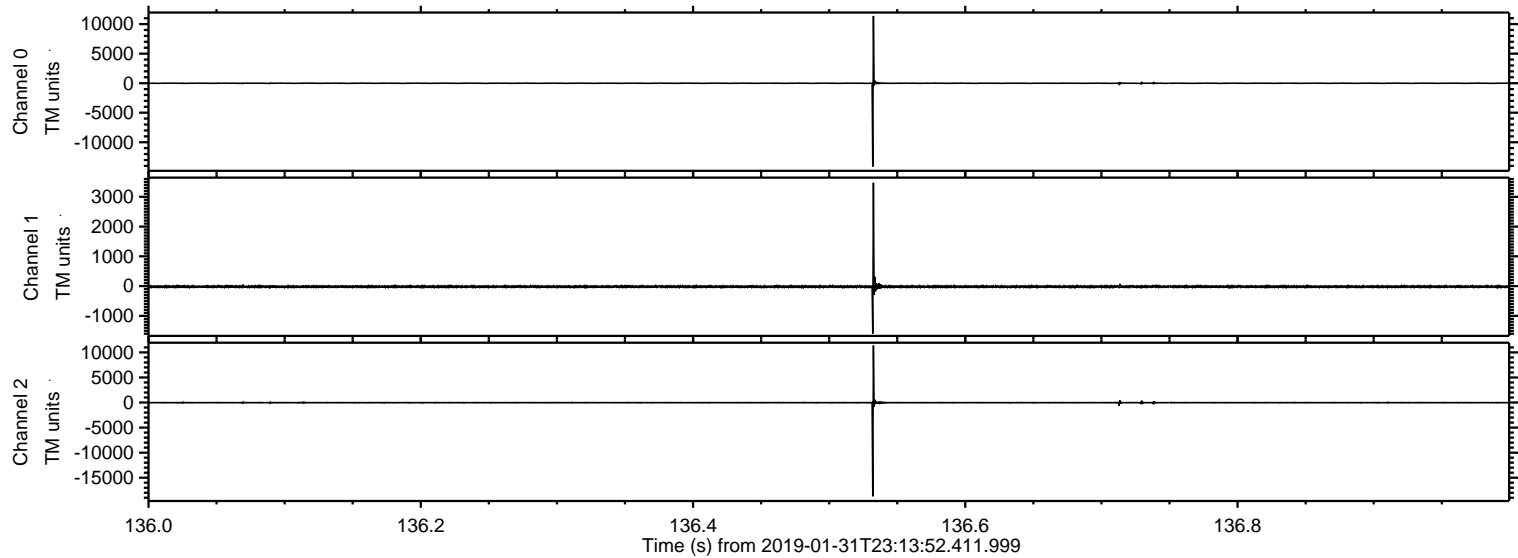
ELMAVAN 3D WAVEFORMS (Measured data sampled at 50 kHz) 51000 packets of 144 samples from 2019-01-31T23:13:52.411.999. Part 132/147

Processed Fri Feb 1 00:21:31 2019 by ELM ver.2012-10-06 from 001__elm20190131_231351__dat00.bin

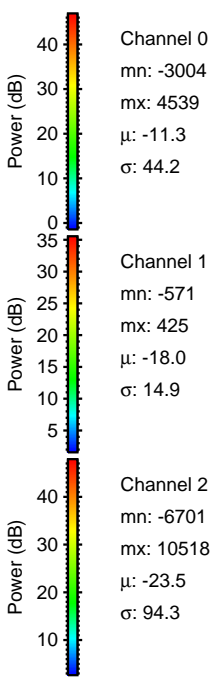
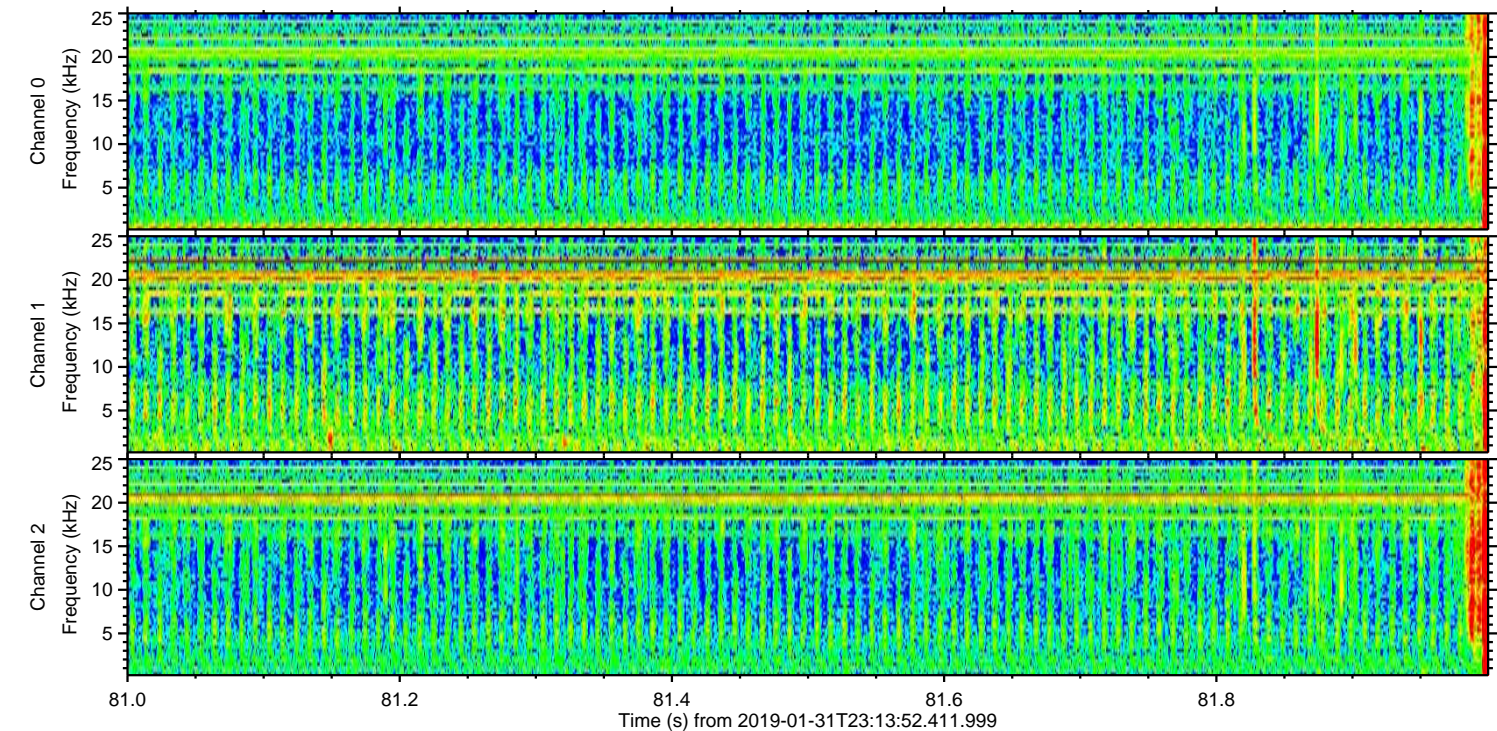
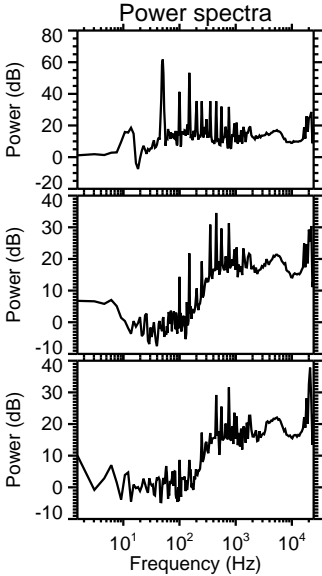
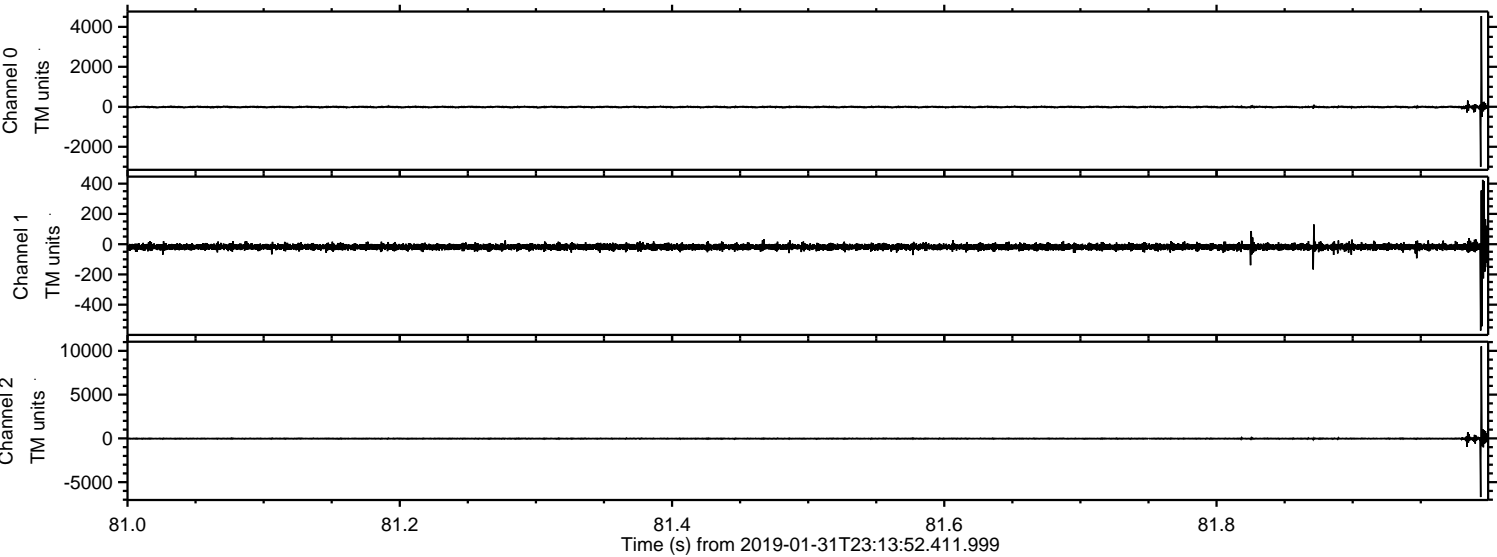


ELMAVAN 3D WAVEFORMS (Measured data sampled at 50 kHz) 51000 packets of 144 samples from 2019-01-31T23:13:52.411.999. Part 137/147

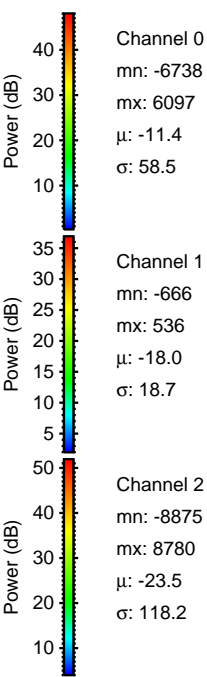
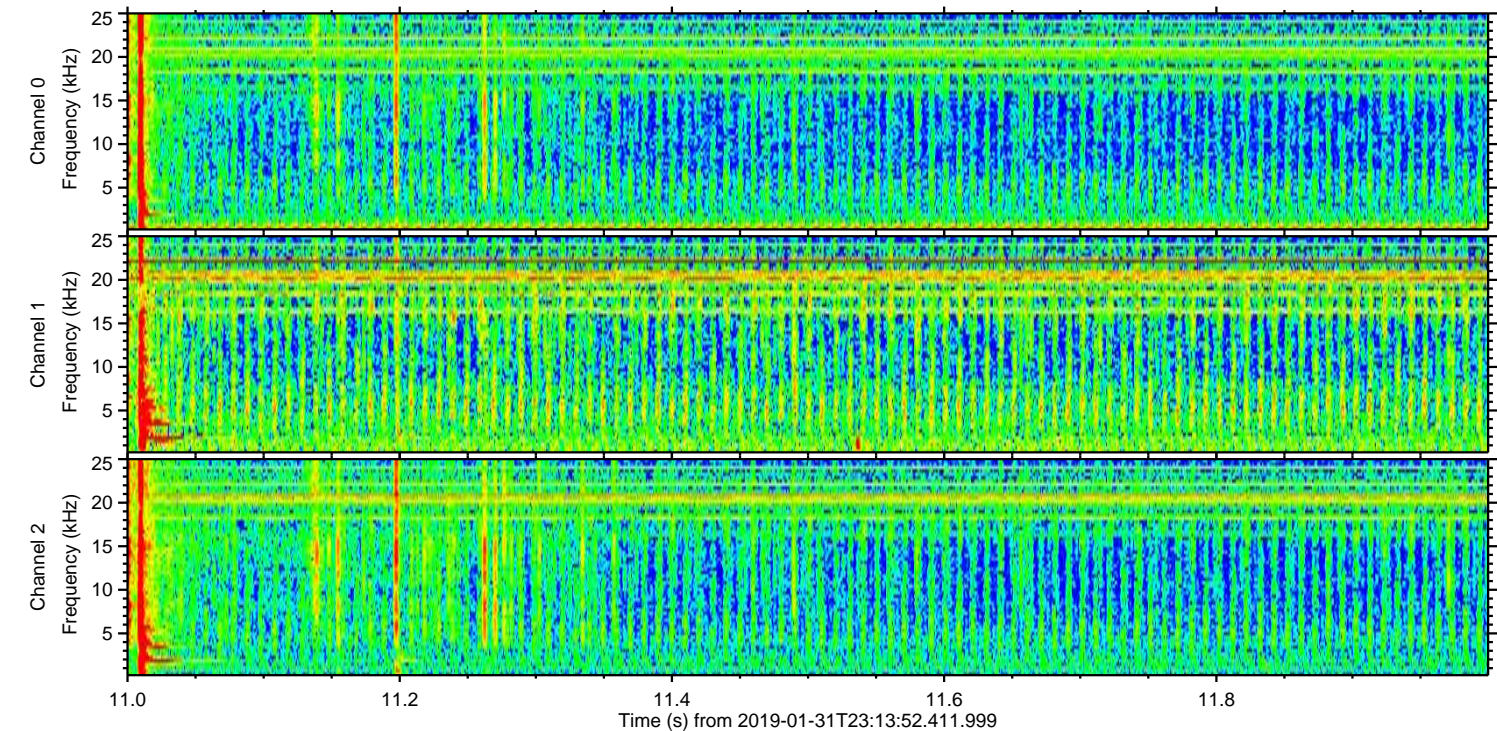
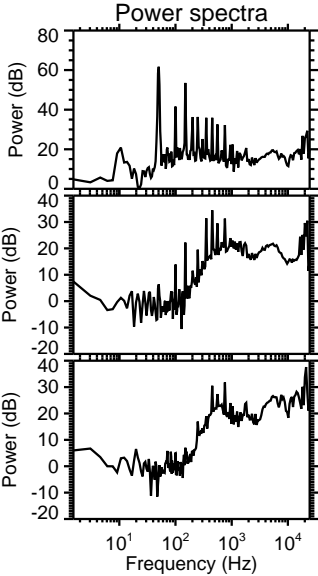
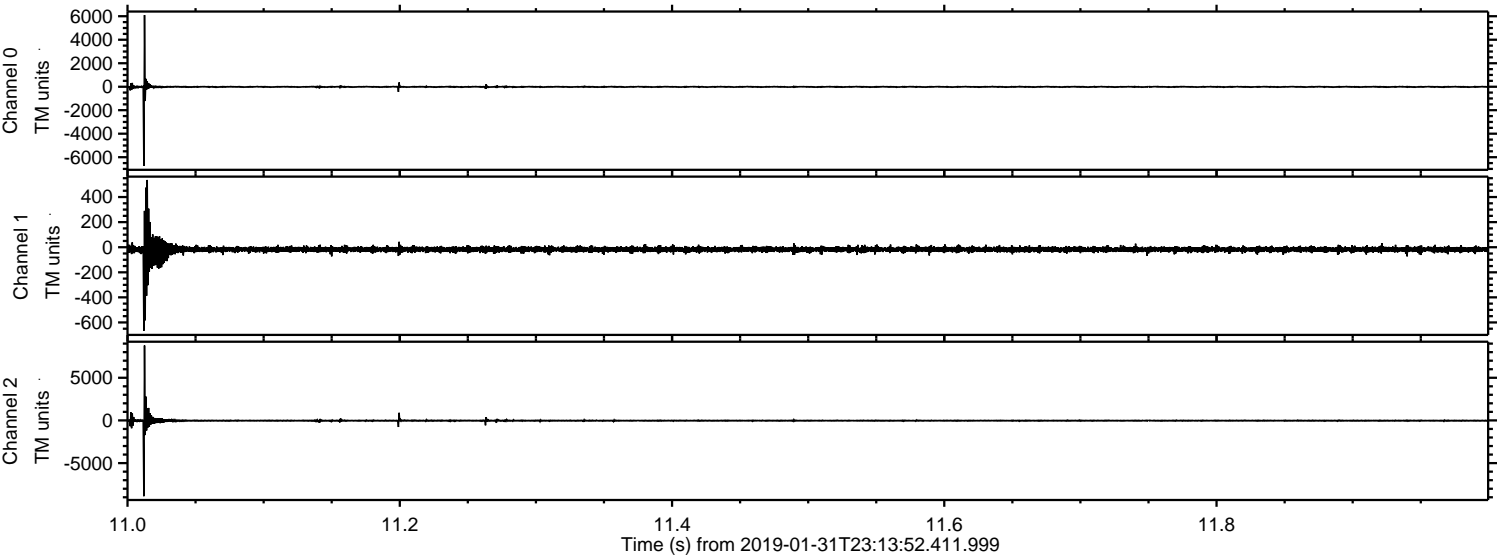
Processed Fri Feb 1 00:21:32 2019 by ELM ver.2012-10-06 from 001__elm20190131_231351__dat00.bin



Processed Fri Feb 1 00:21:32 2019 by ELM ver.2012-10-06 from 001__elm20190131_231351__dat00.bin

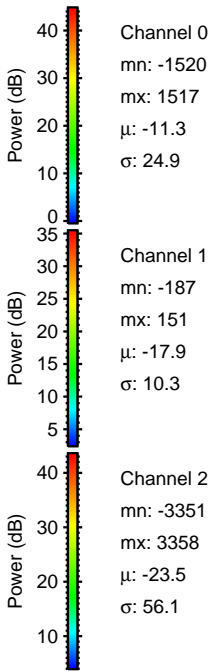
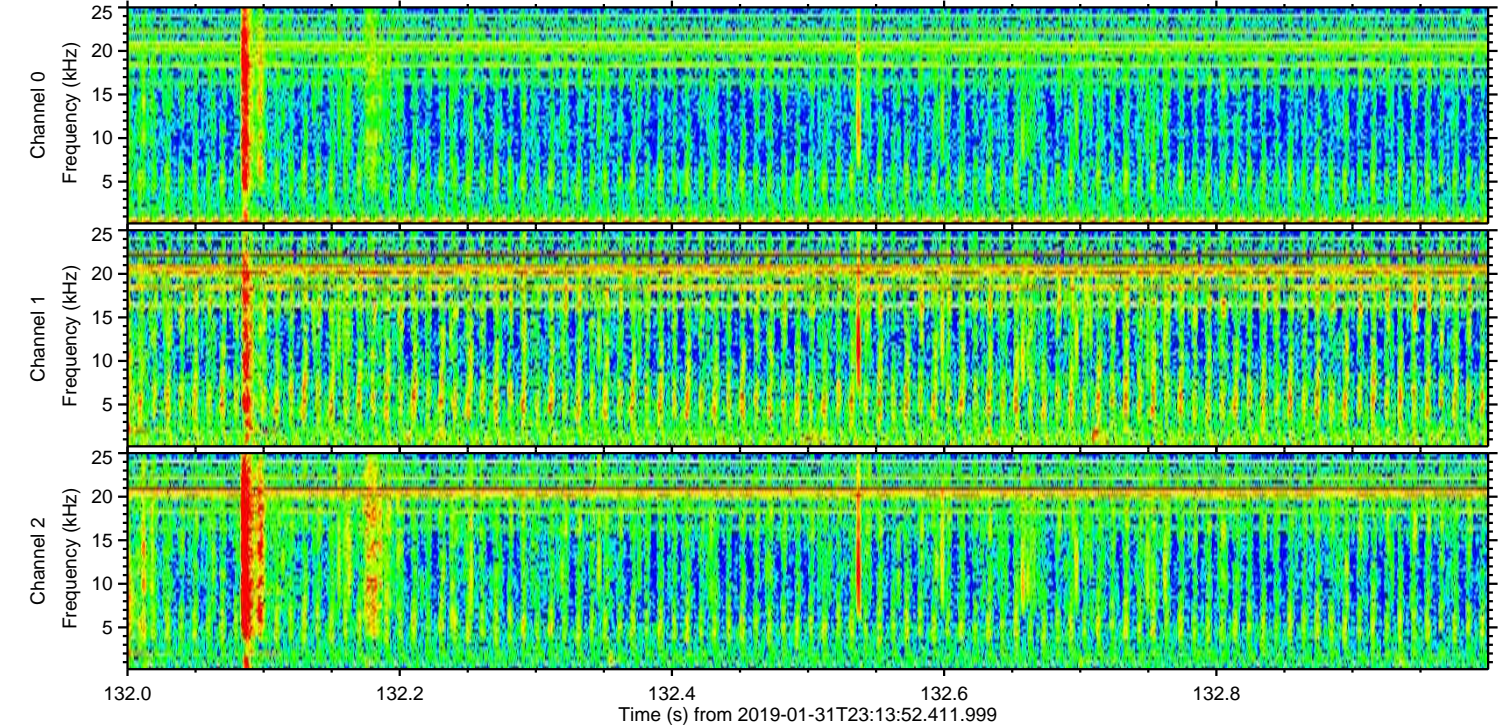
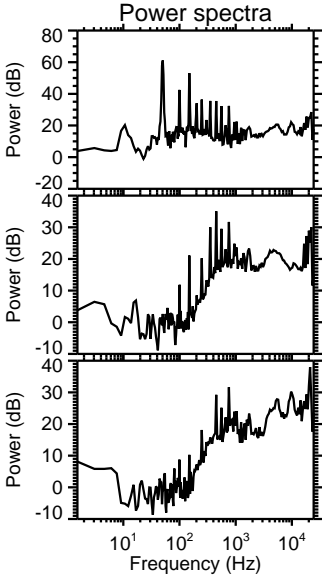
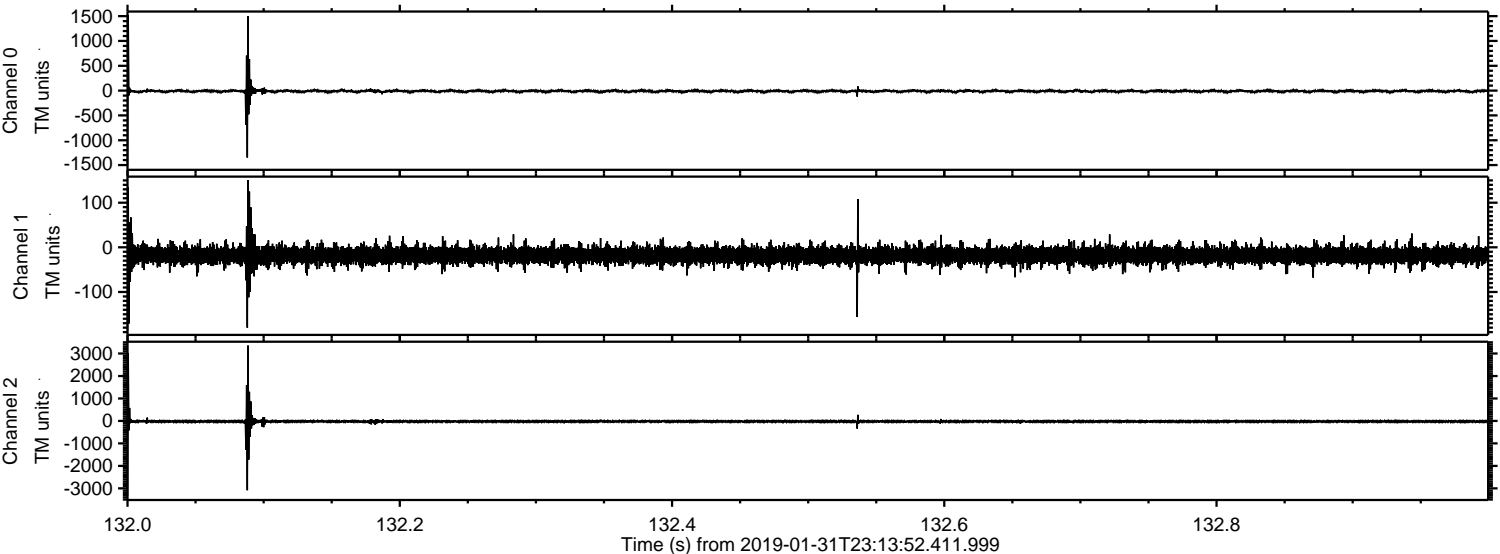


Processed Fri Feb 1 00:21:33 2019 by ELM ver.2012-10-06 from 001__elm20190131_231351__dat00.bin

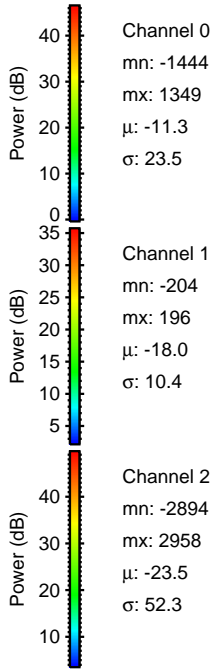
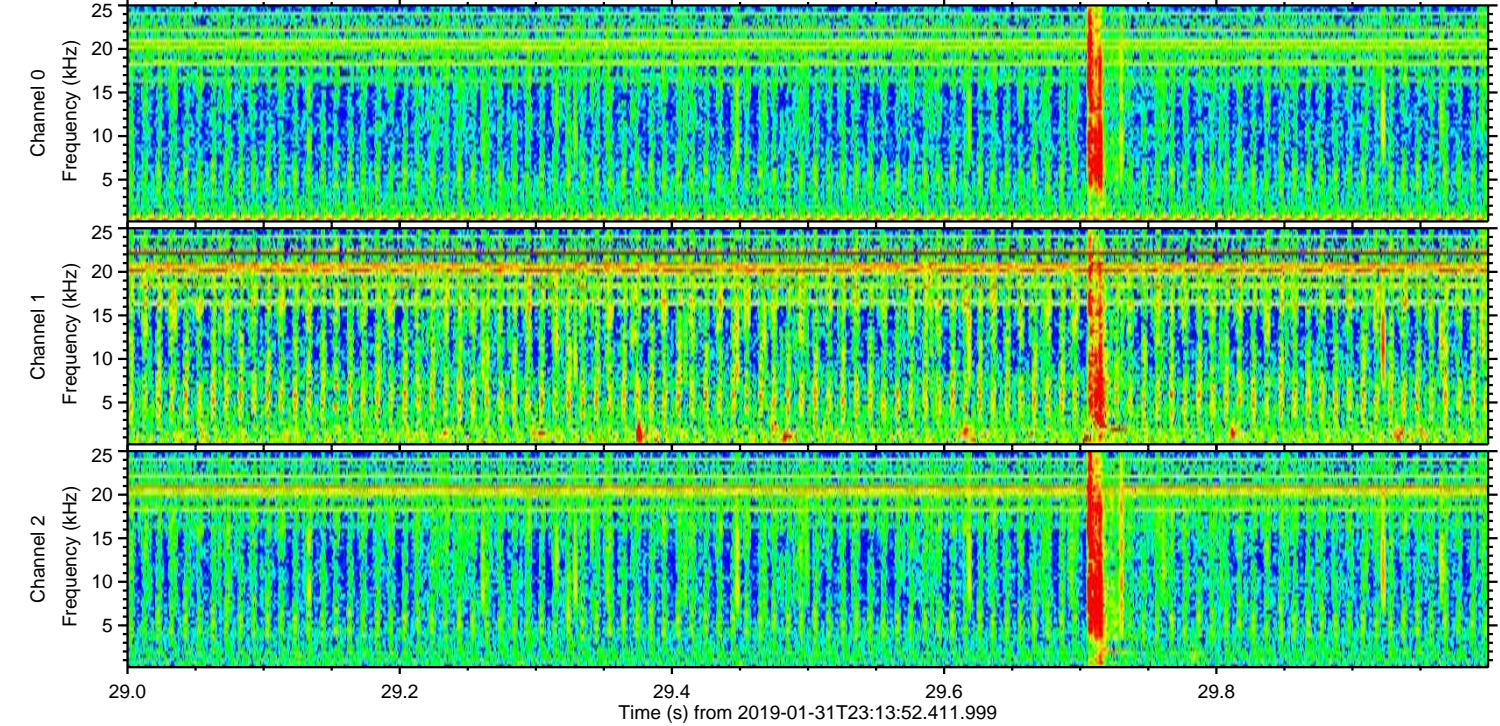
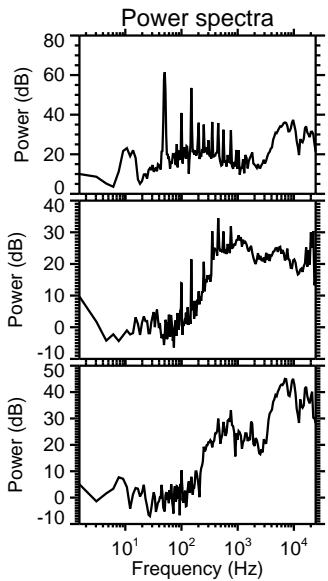
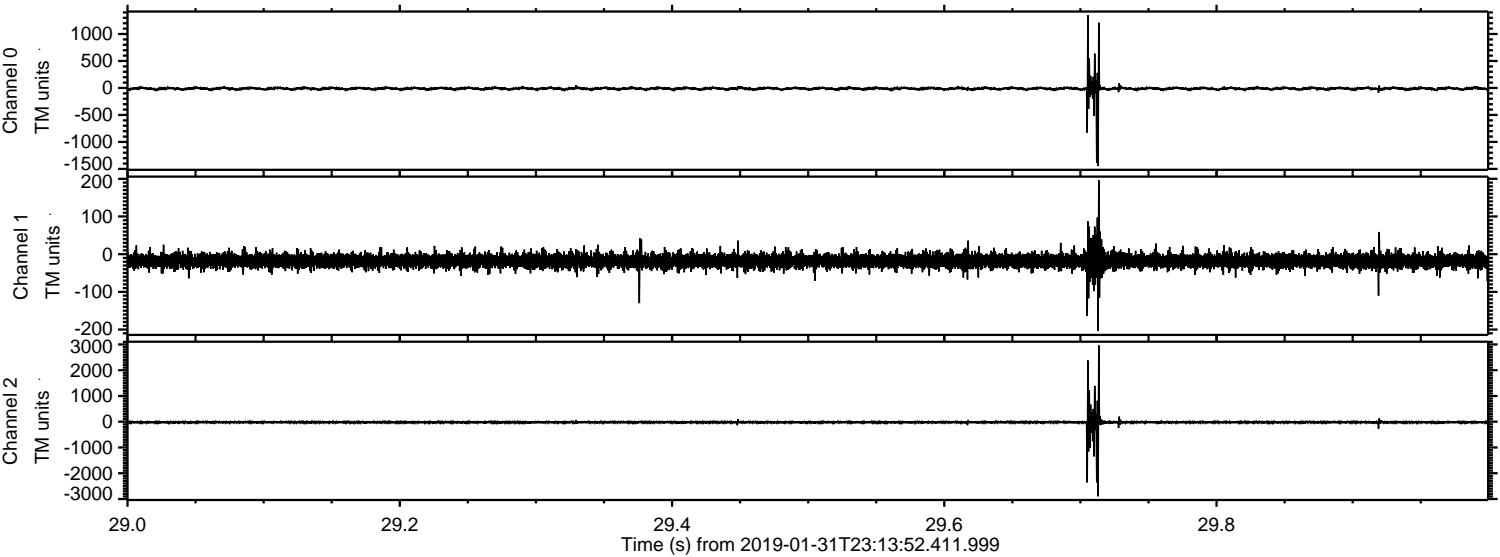


ELMAVAN 3D WAVEFORMS (Measured data sampled at 50 kHz) 51000 packets of 144 samples from 2019-01-31T23:13:52.411.999. Part 133/147

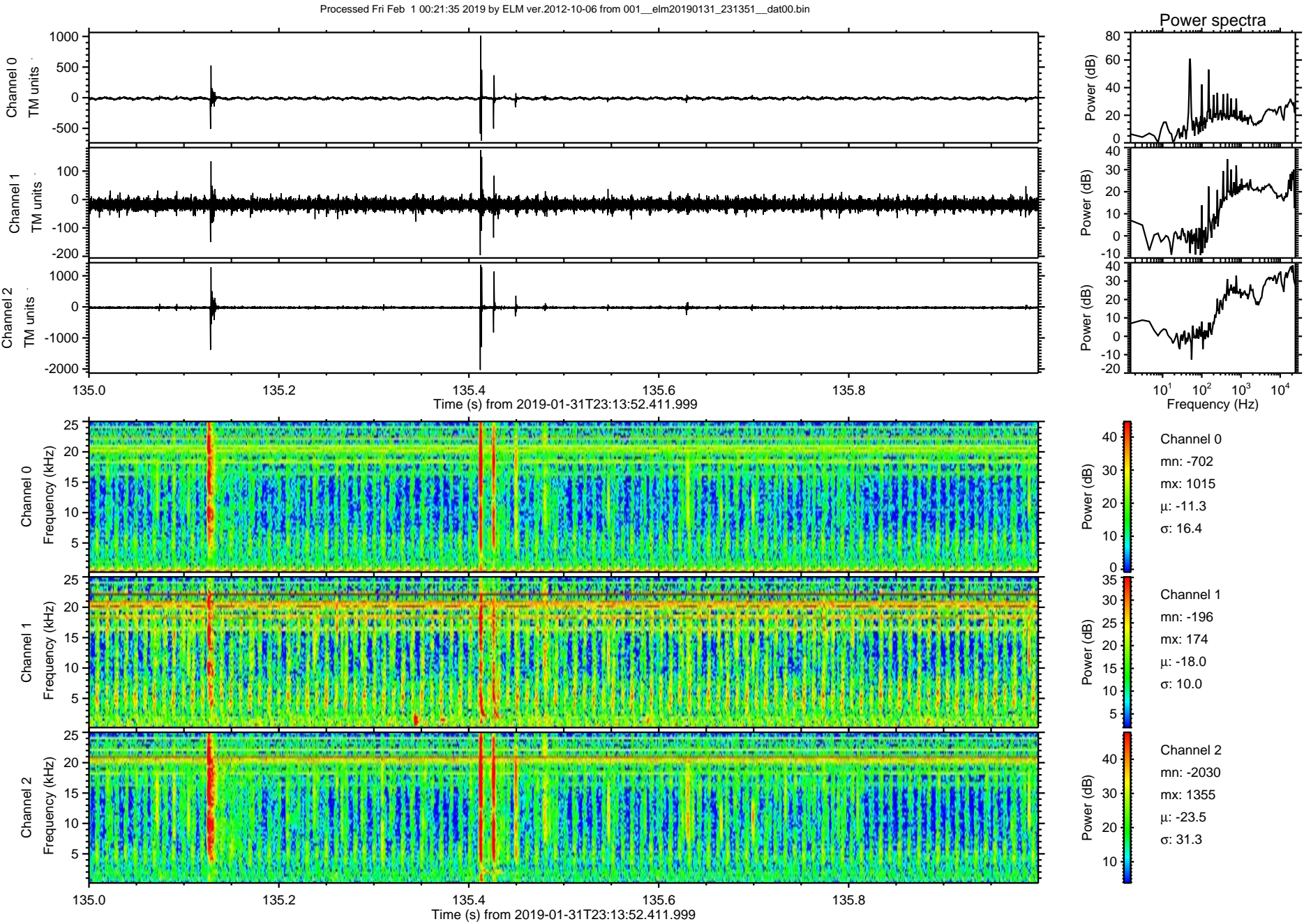
Processed Fri Feb 1 00:21:33 2019 by ELM ver.2012-10-06 from 001__elm20190131_231351__dat00.bin



Processed Fri Feb 1 00:21:34 2019 by ELM ver.2012-10-06 from 001__elm20190131_231351__dat00.bin

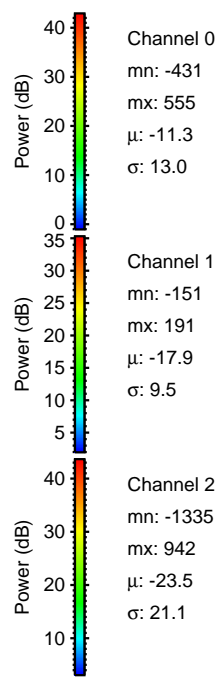
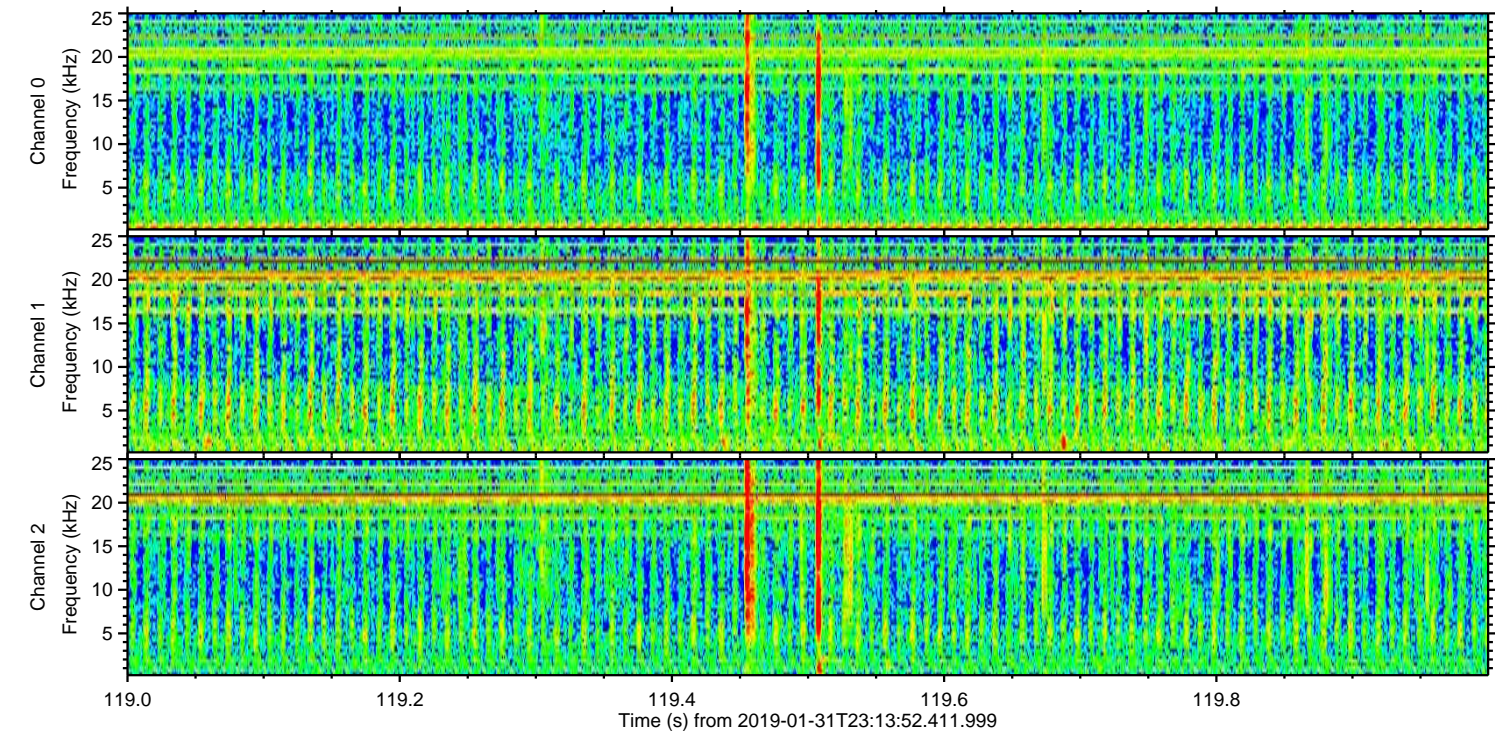
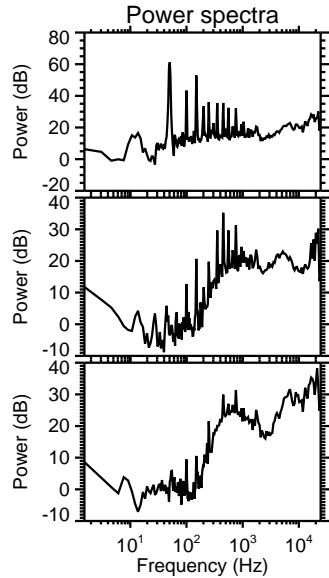
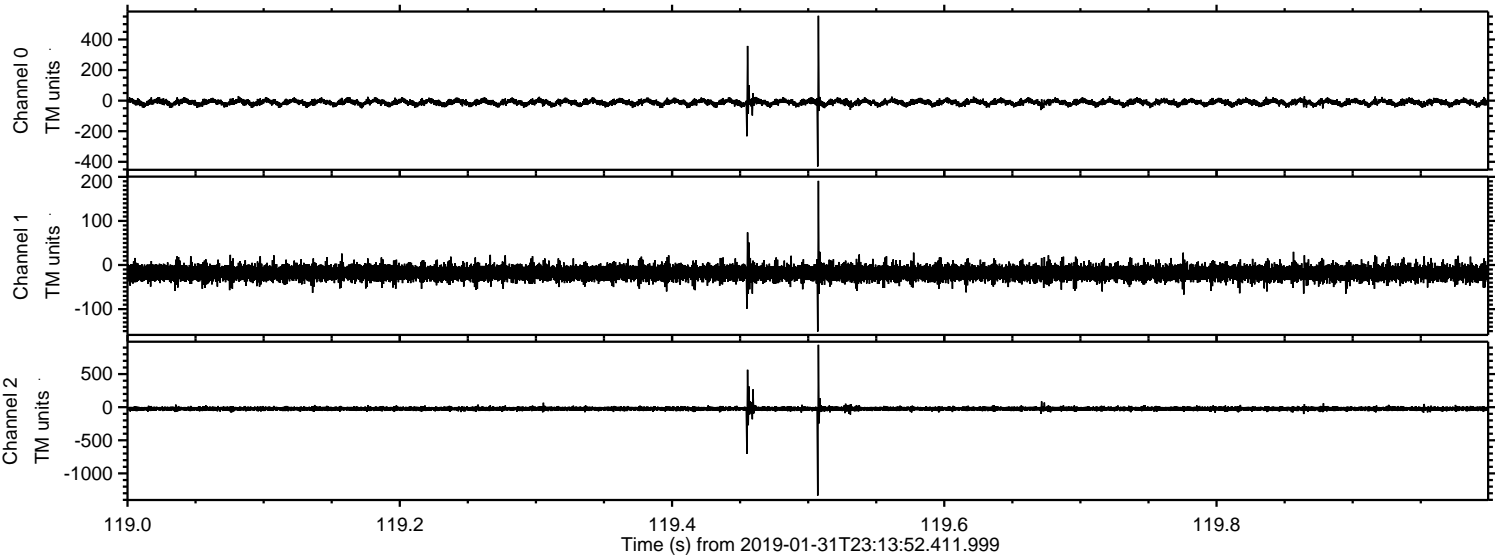


ELMAVAN 3D WAVEFORMS (Measured data sampled at 50 kHz) 51000 packets of 144 samples from 2019-01-31T23:13:52.411.999. Part 136/147



ELMAVAN 3D WAVEFORMS (Measured data sampled at 50 kHz) 51000 packets of 144 samples from 2019-01-31T23:13:52.411.999. Part 120/147

Processed Fri Feb 1 00:21:35 2019 by ELM ver.2012-10-06 from 001__elm20190131_231351__dat00.bin



Channel 0
mn: -431
mx: 555
 μ : -11.3
 σ : 13.0

Channel 1
mn: -151
mx: 191
 μ : -17.9
 σ : 9.5

Channel 2
mn: -1335
mx: 942
 μ : -23.5
 σ : 21.1

Processed Fri Feb 1 00:21:36 2019 by ELM ver.2012-10-06 from 001__elm20190131_231351__dat00.bin

