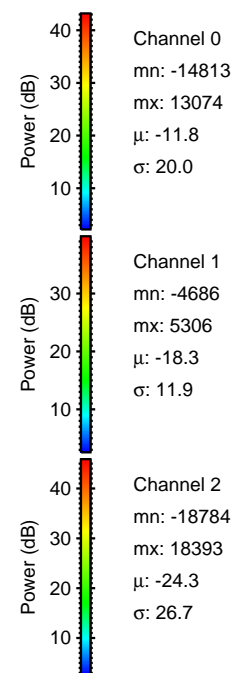
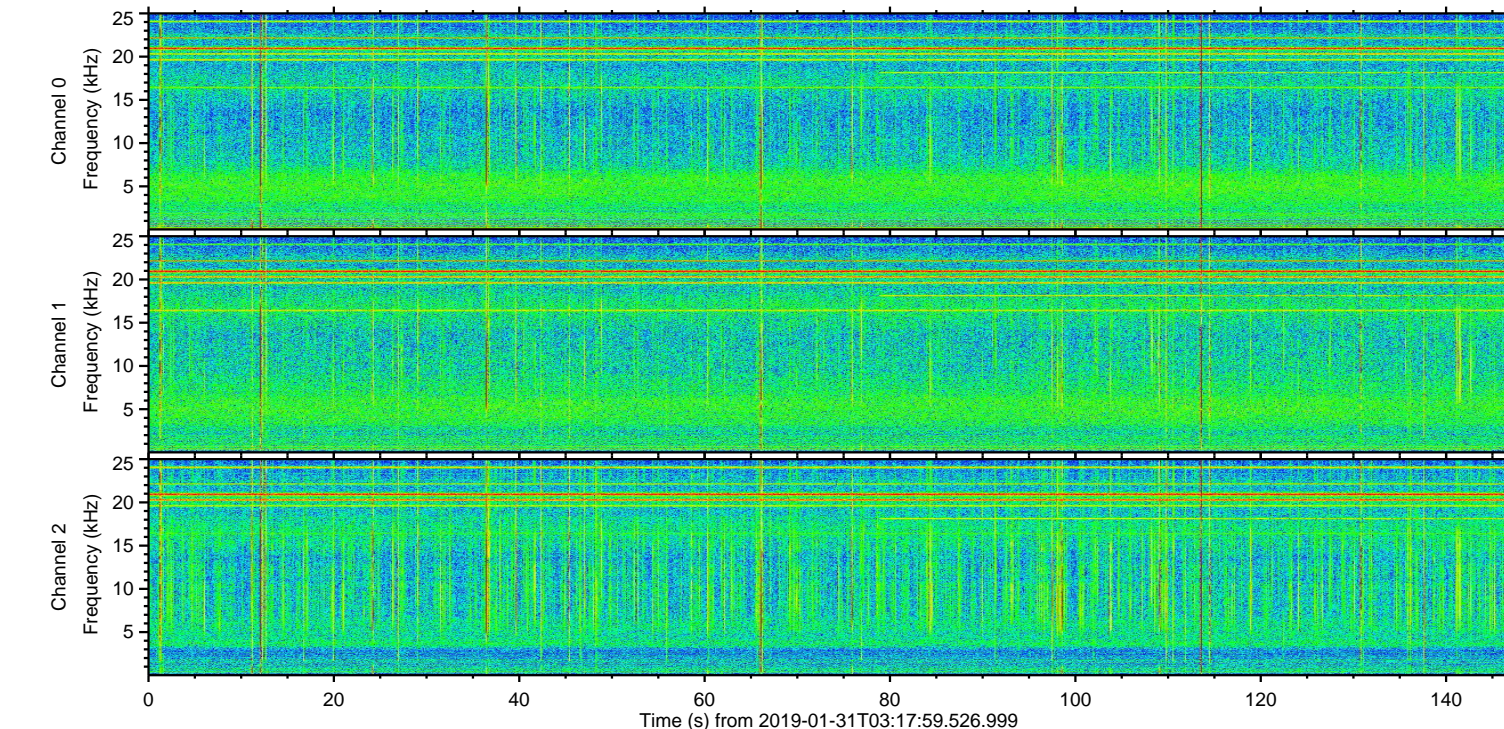
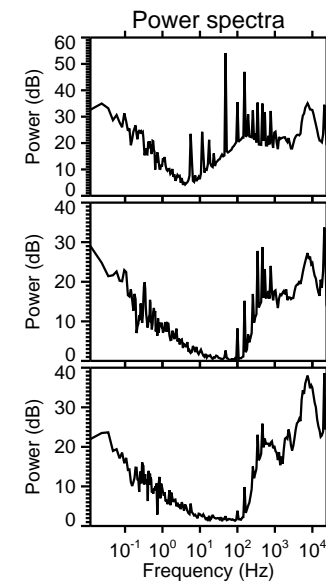
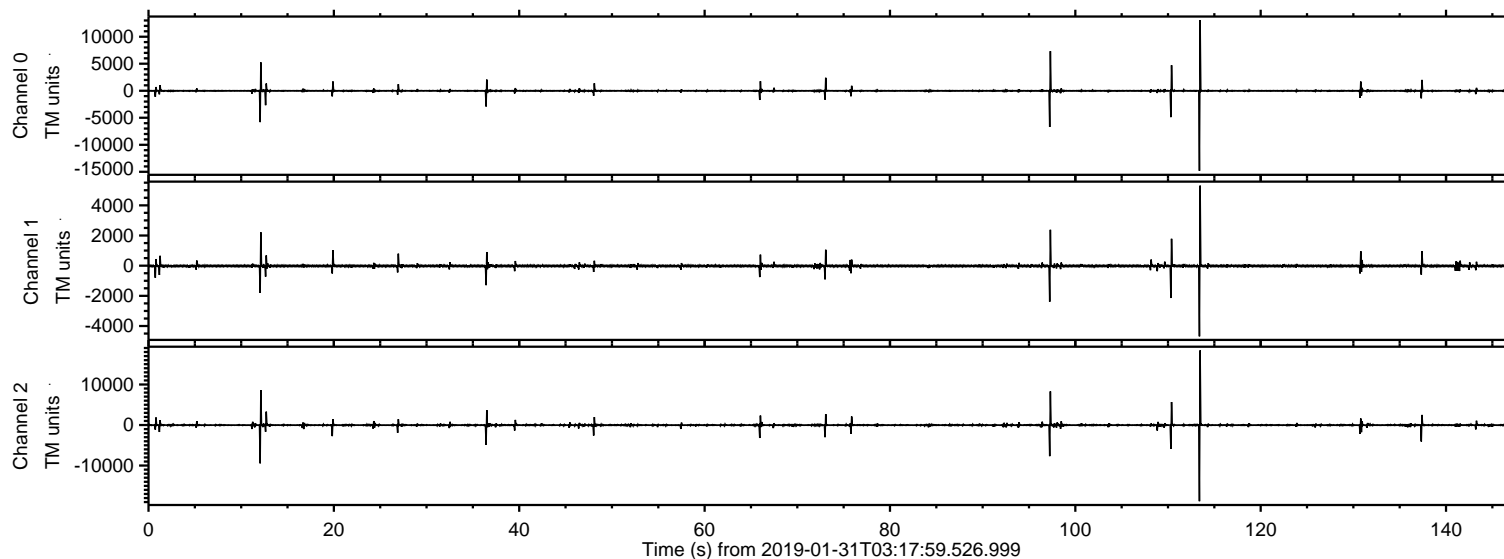


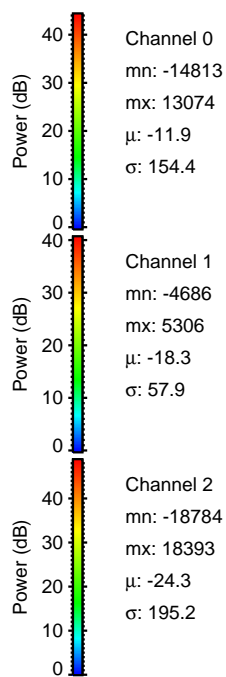
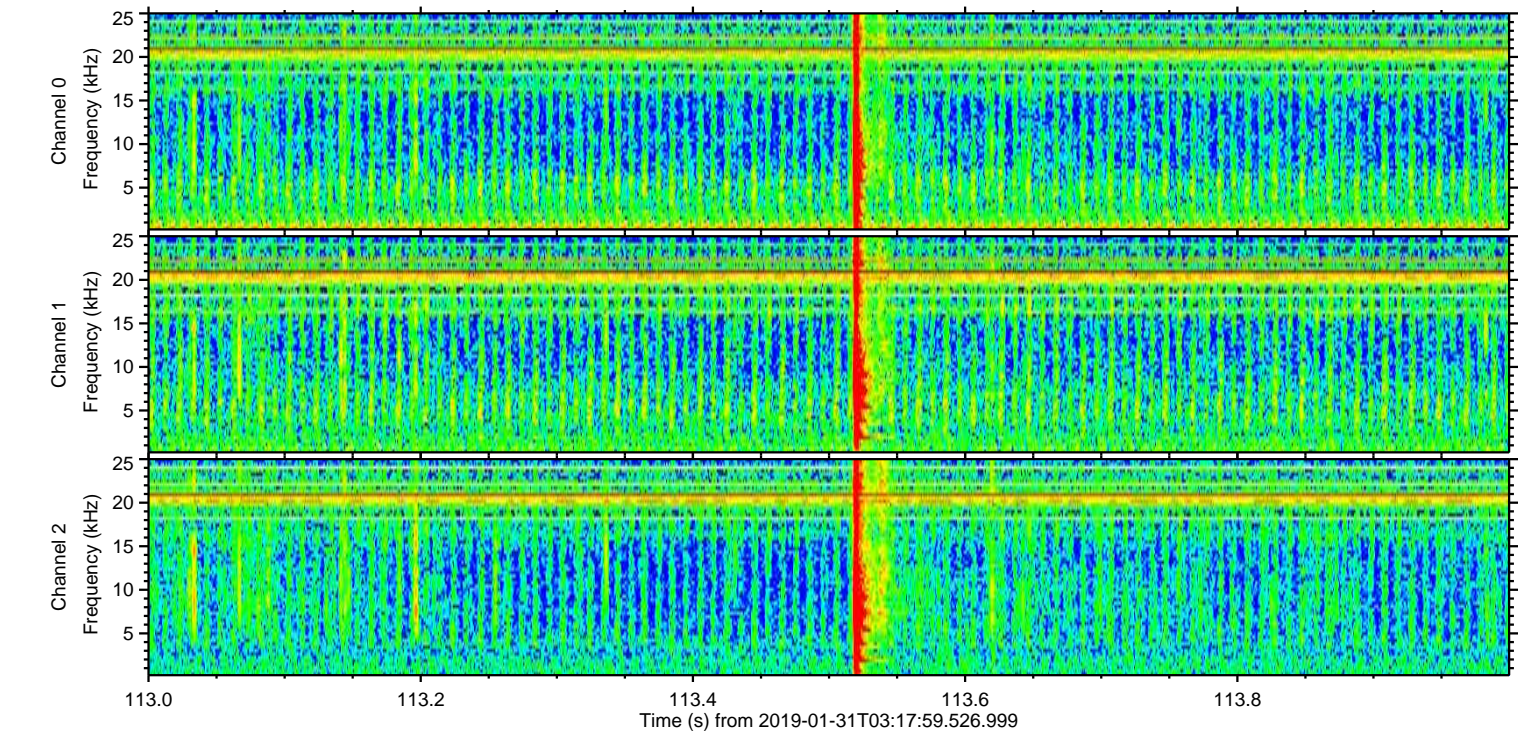
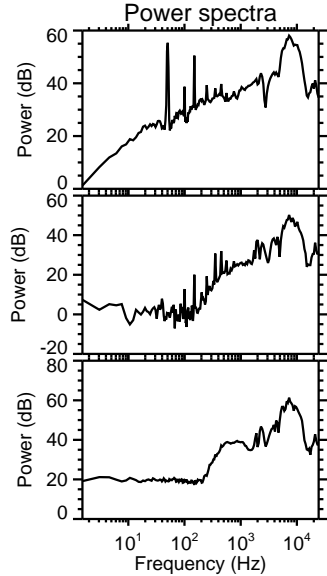
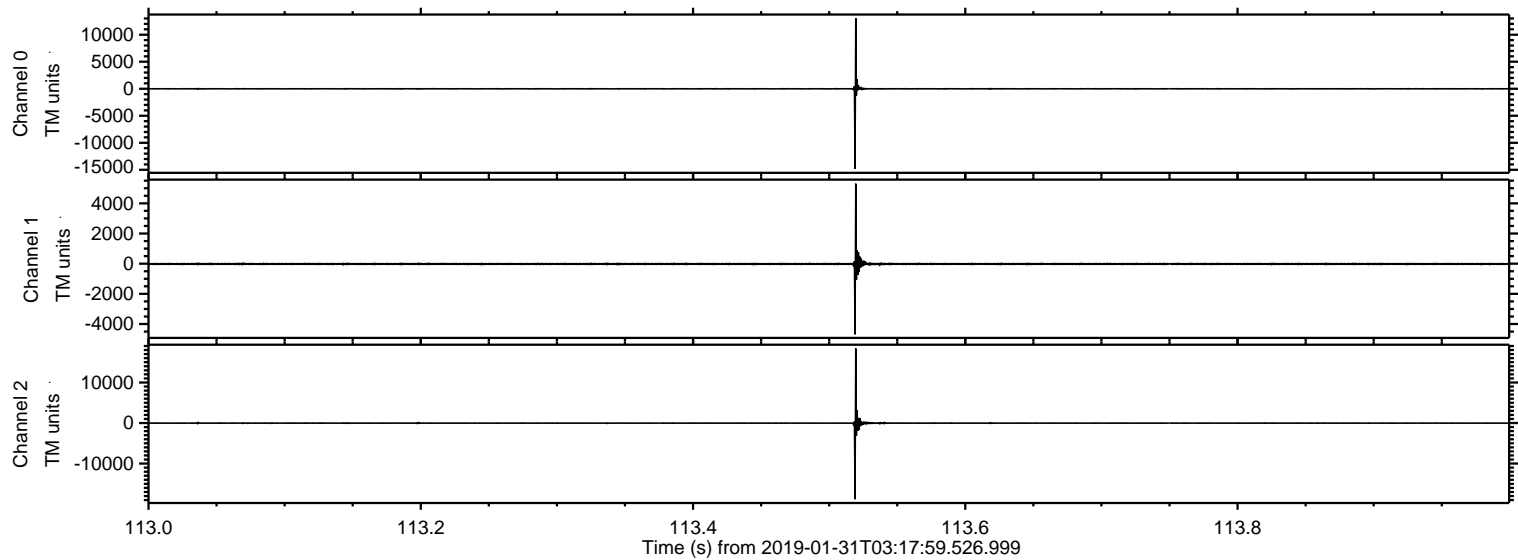
ELMAVAN 3D WAVEFORMS (Measured data sampled at 50 kHz) 51000 packets of 144 samples from 2019-01-31T03:17:59.526.999.

Processed Thu Jan 31 04:26:00 2019 by ELM ver.2012-10-06 from 001__elm20190131_031758__dat00.bin

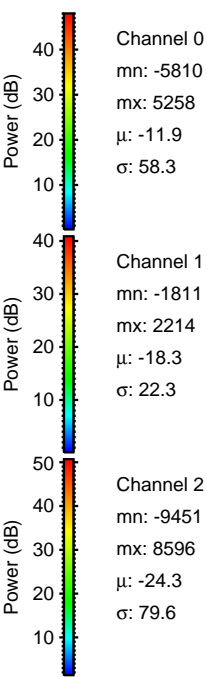
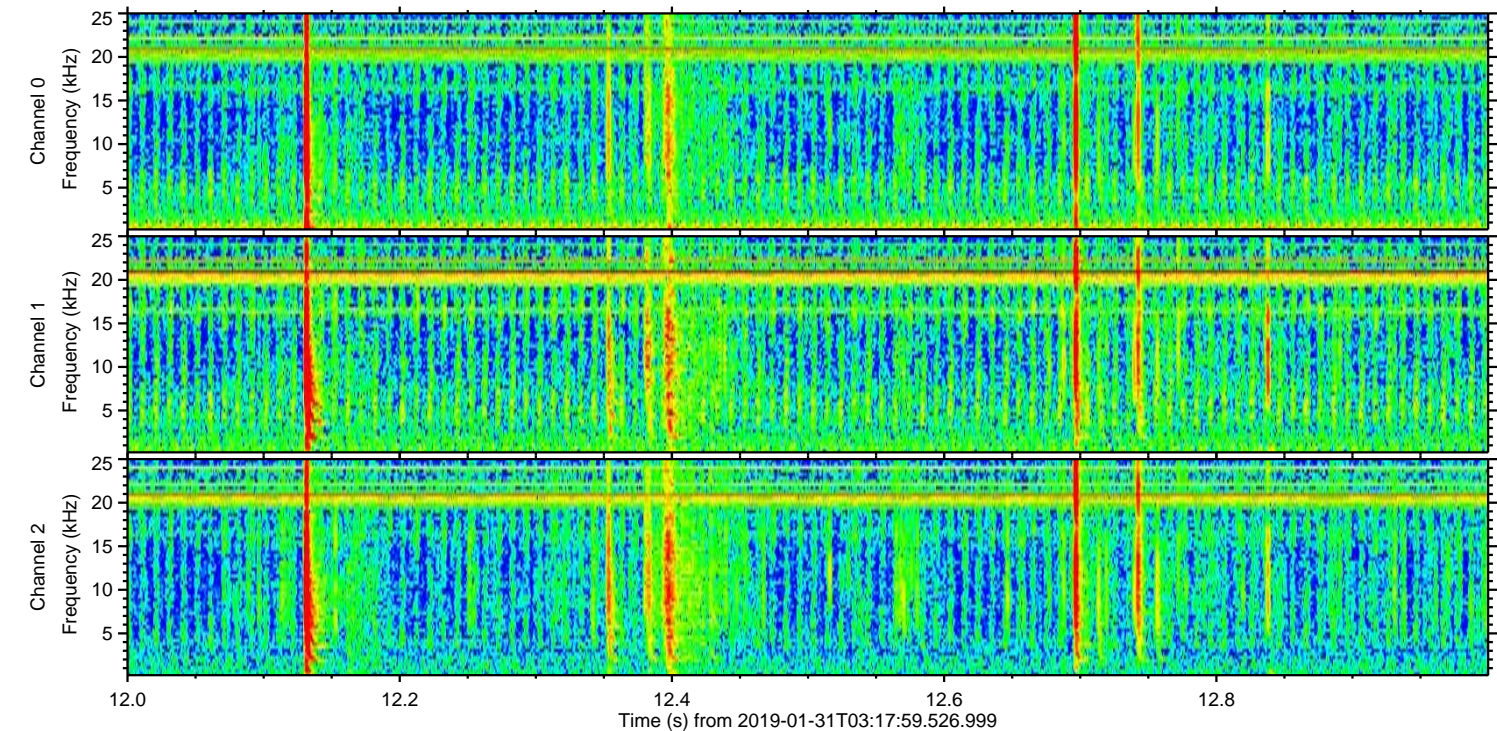
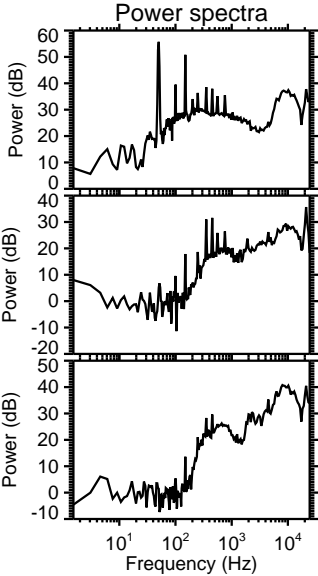
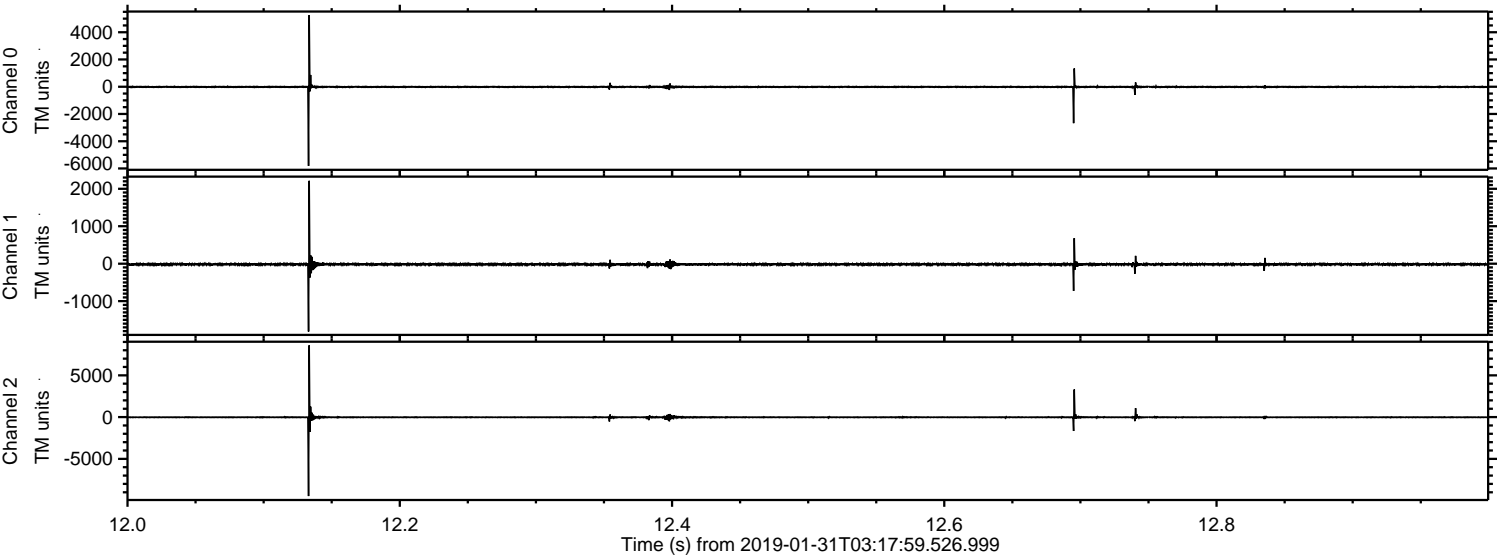


ELMAVAN 3D WAVEFORMS (Measured data sampled at 50 kHz) 51000 packets of 144 samples from 2019-01-31T03:17:59.526.999. Part 114/147

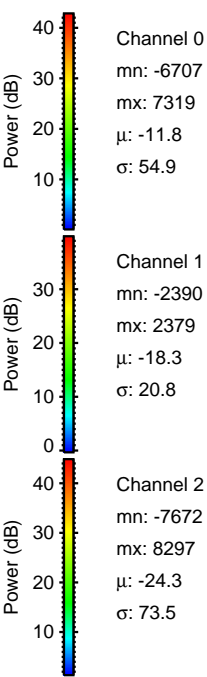
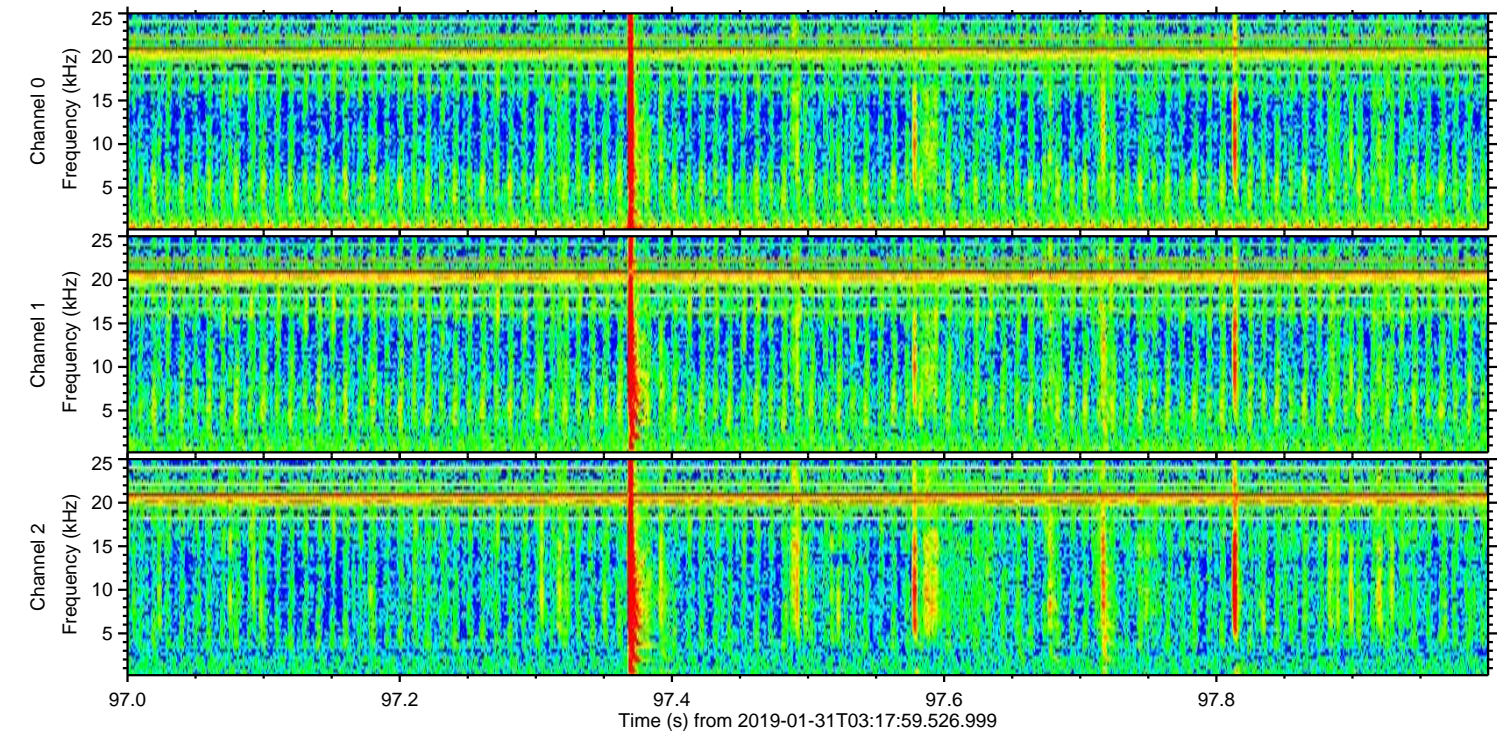
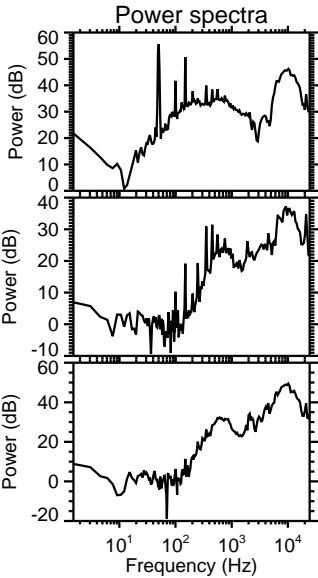
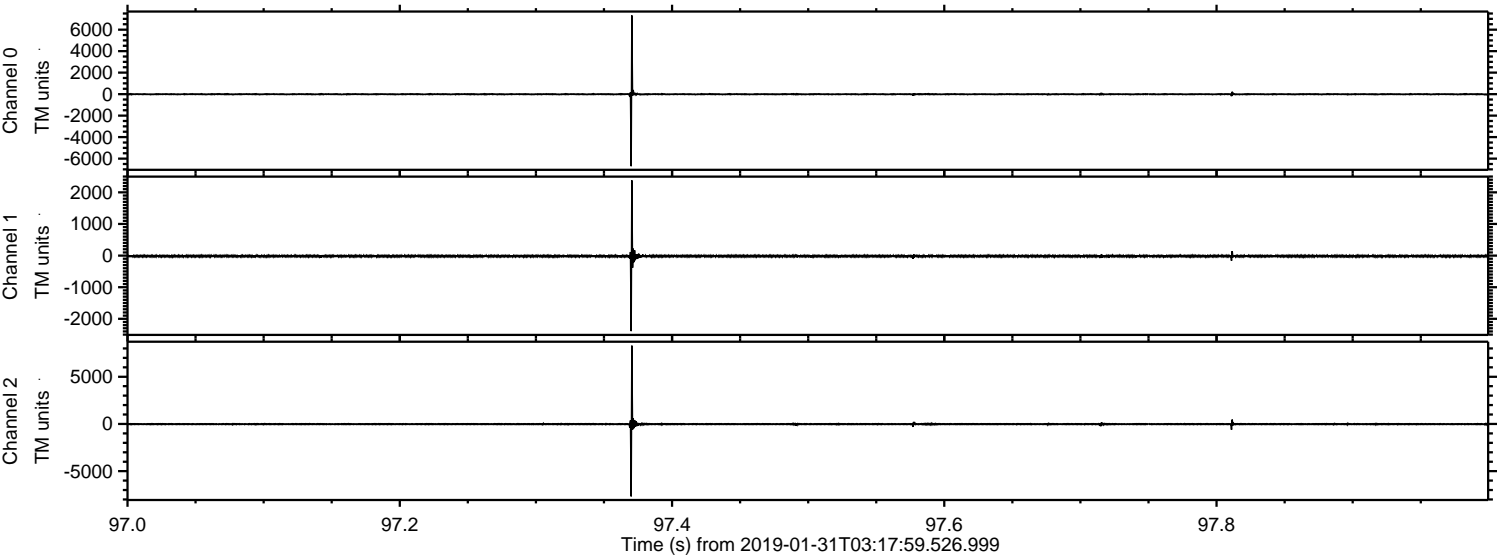
Processed Thu Jan 31 04:26:06 2019 by ELM ver.2012-10-06 from 001__elm20190131_031758__dat00.bin



Processed Thu Jan 31 04:26:07 2019 by ELM ver.2012-10-06 from 001__elm20190131_031758__dat00.bin

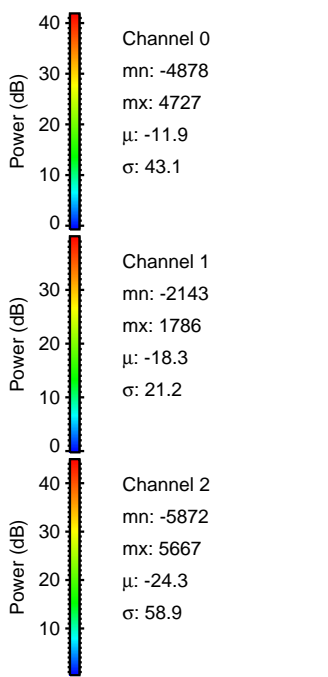
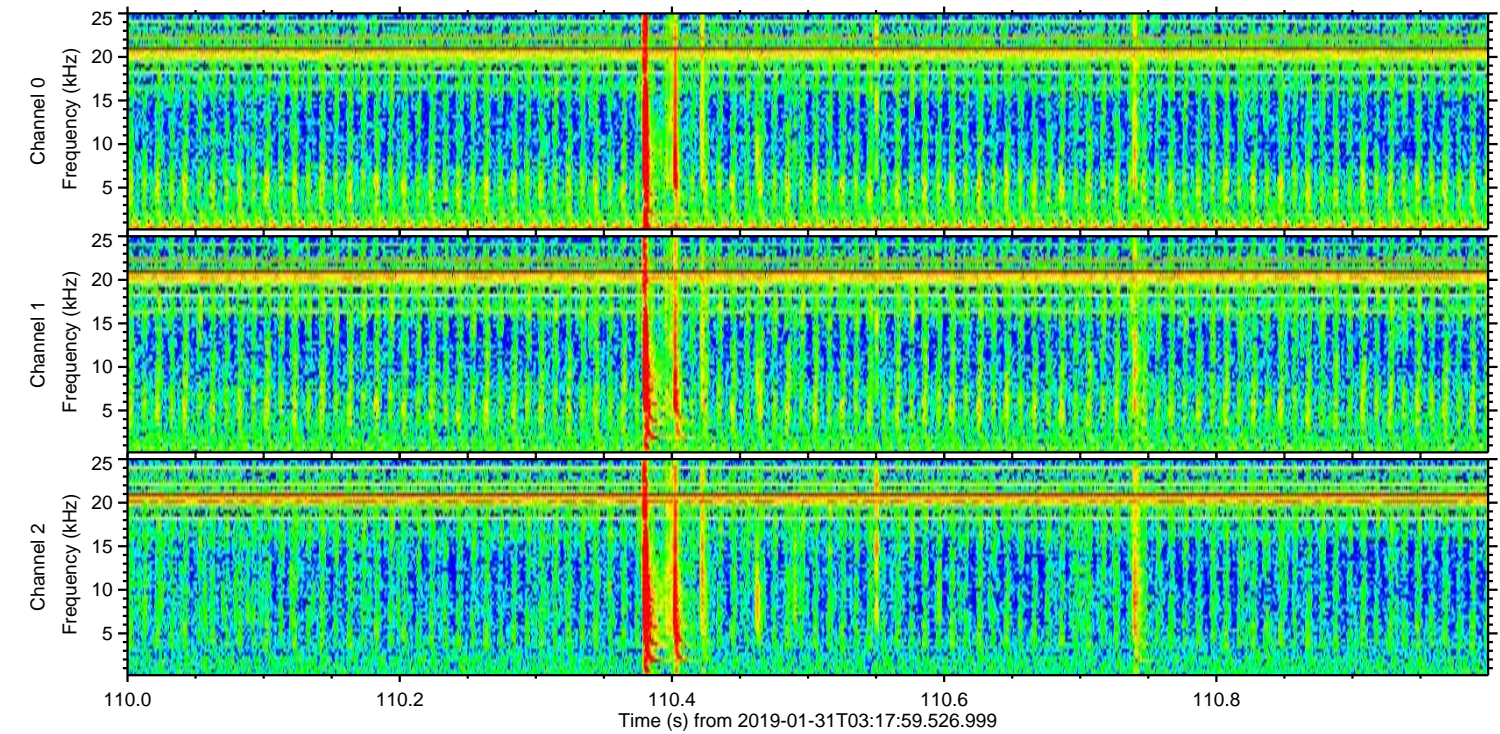
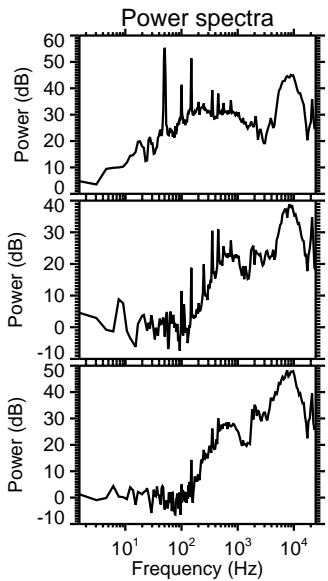
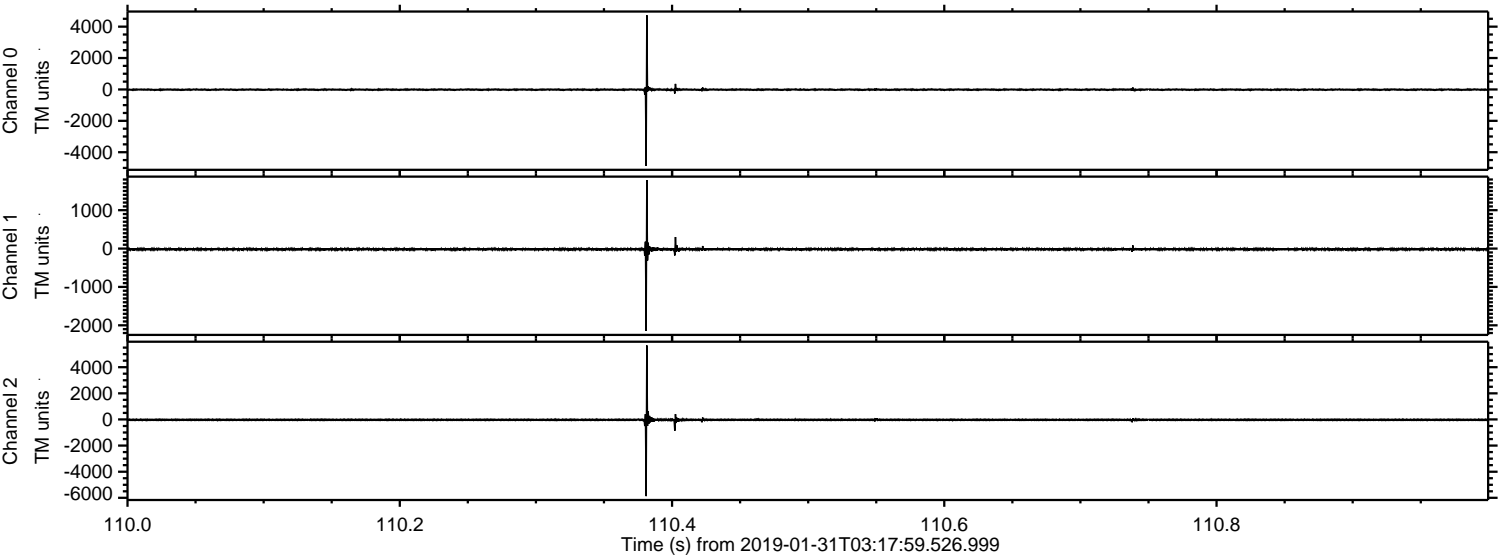


Processed Thu Jan 31 04:26:08 2019 by ELM ver.2012-10-06 from 001__elm20190131_031758__dat00.bin

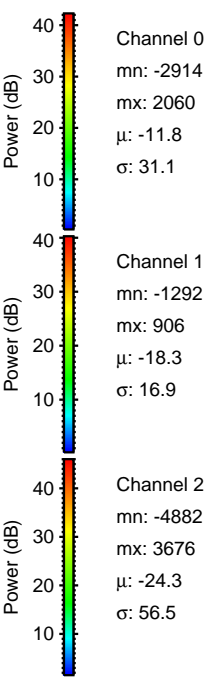
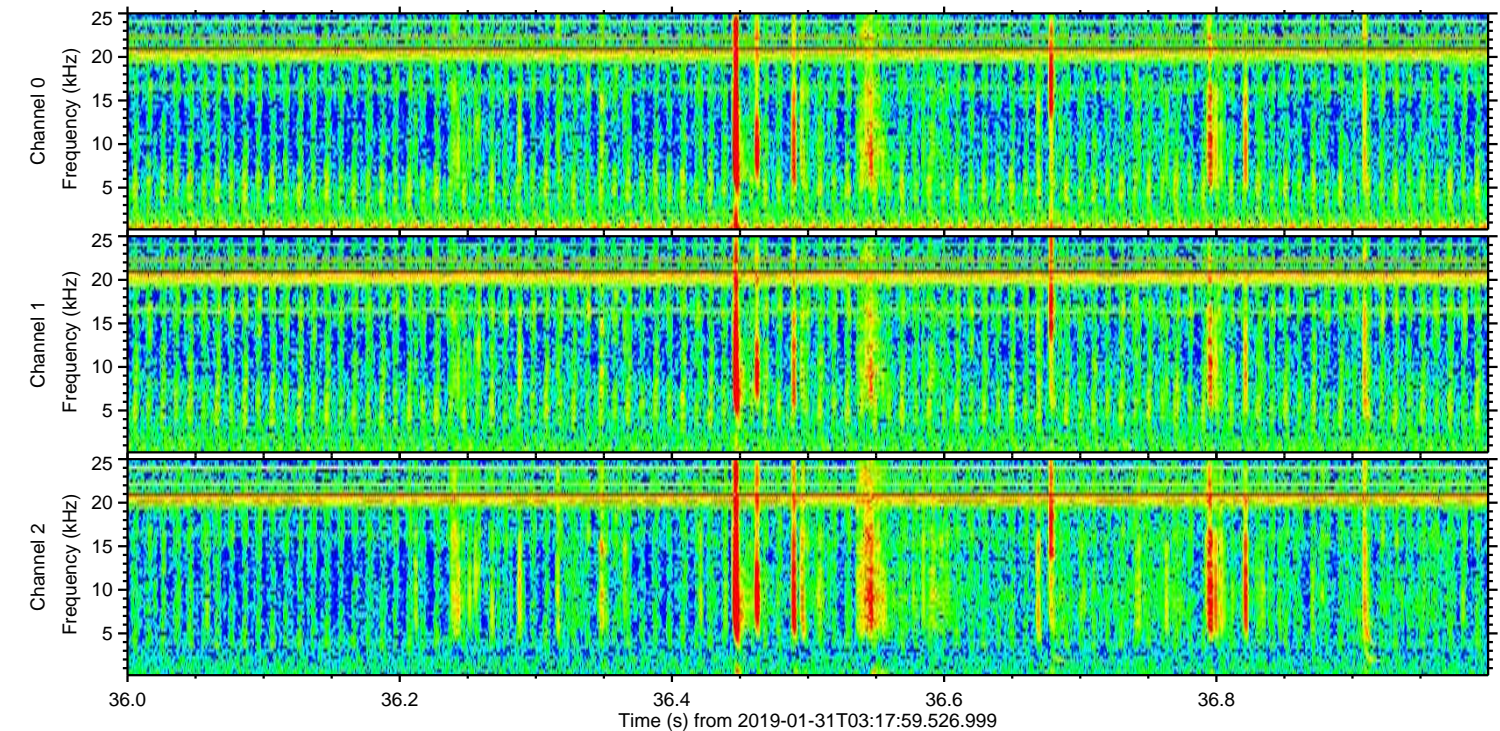
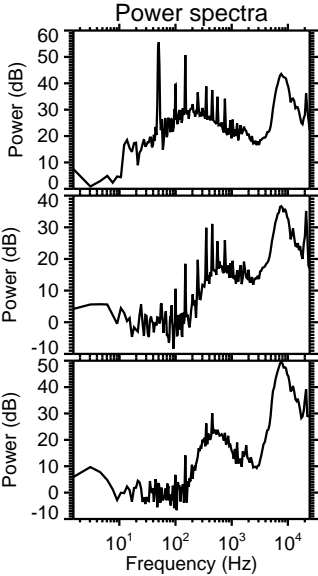
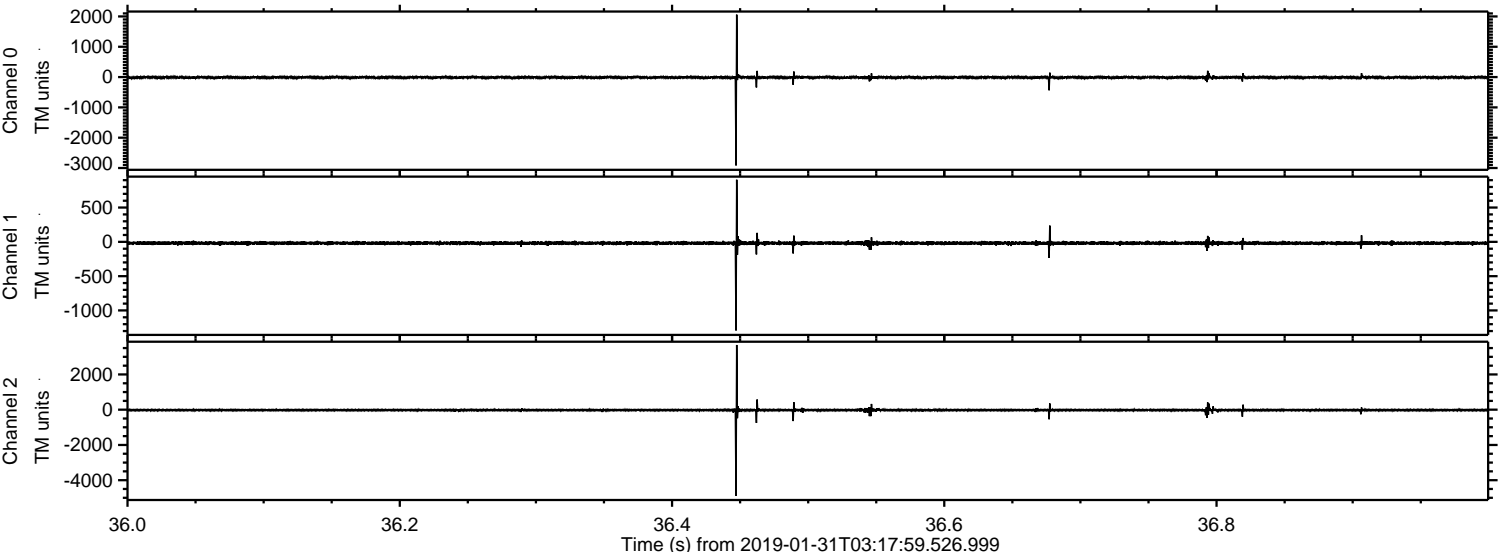


ELMAVAN 3D WAVEFORMS (Measured data sampled at 50 kHz) 51000 packets of 144 samples from 2019-01-31T03:17:59.526.999. Part 111/147

Processed Thu Jan 31 04:26:08 2019 by ELM ver.2012-10-06 from 001__elm20190131_031758__dat00.bin

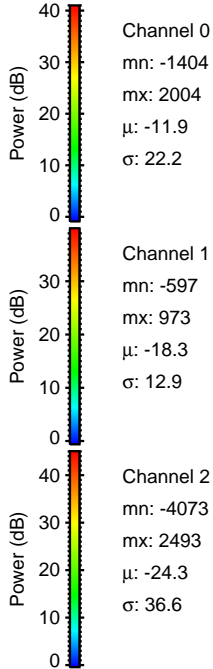
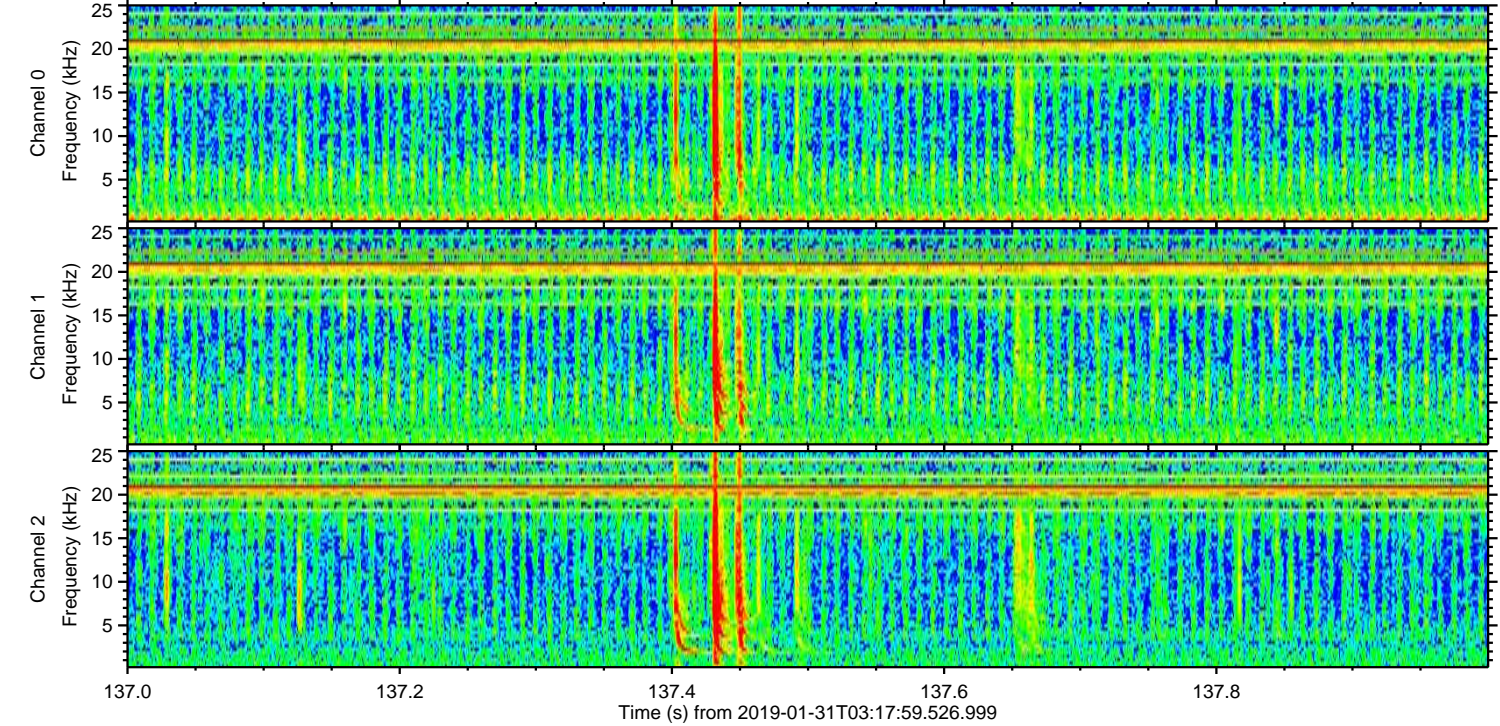
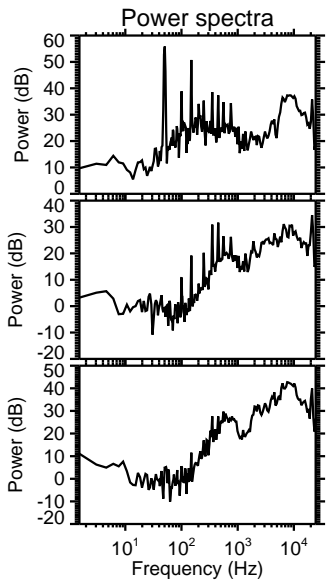
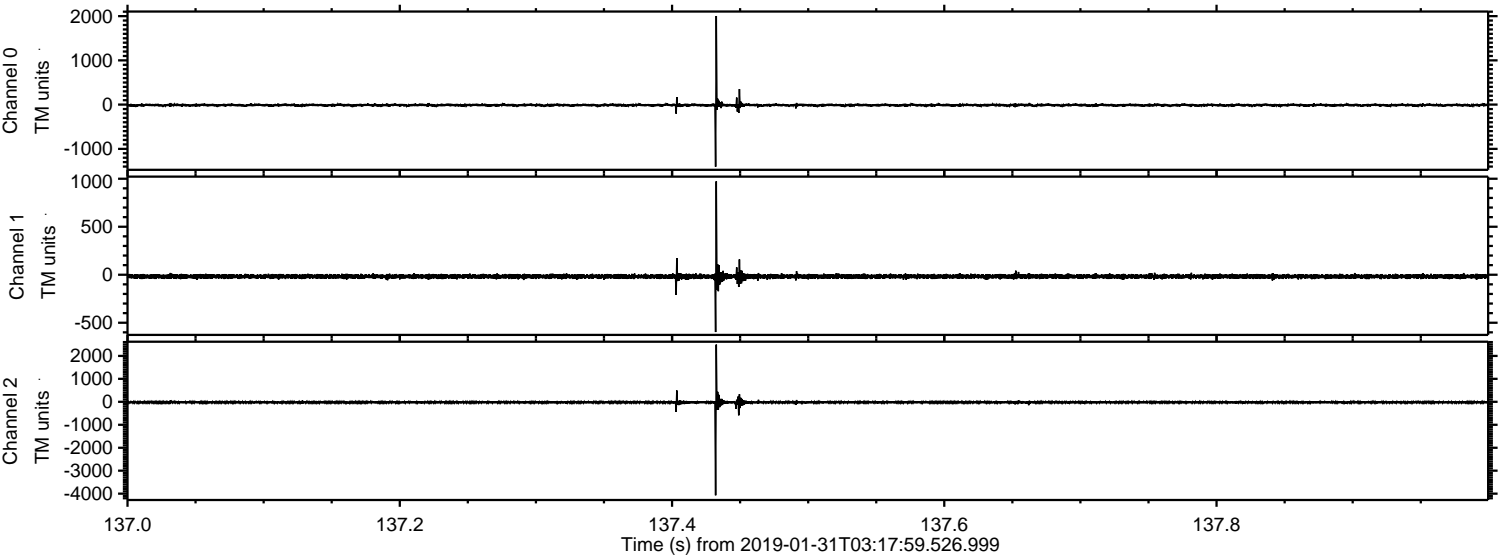


Processed Thu Jan 31 04:26:09 2019 by ELM ver.2012-10-06 from 001__elm20190131_031758__dat00.bin

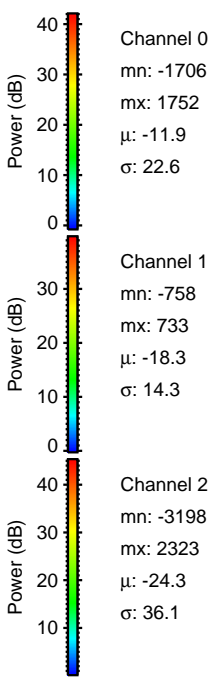
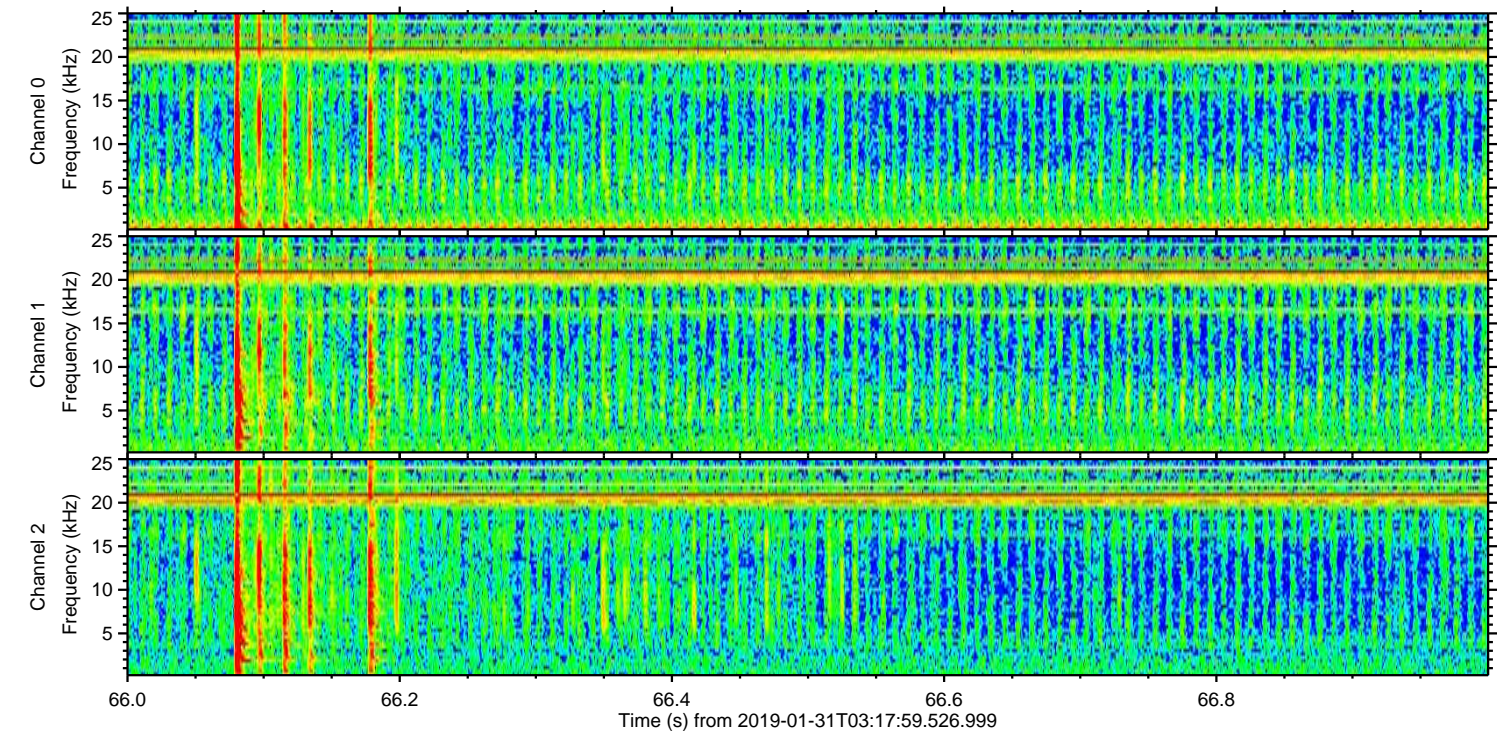
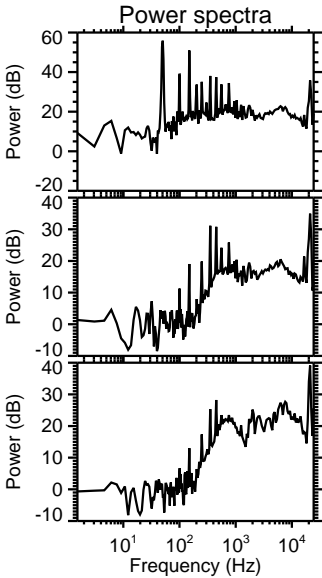
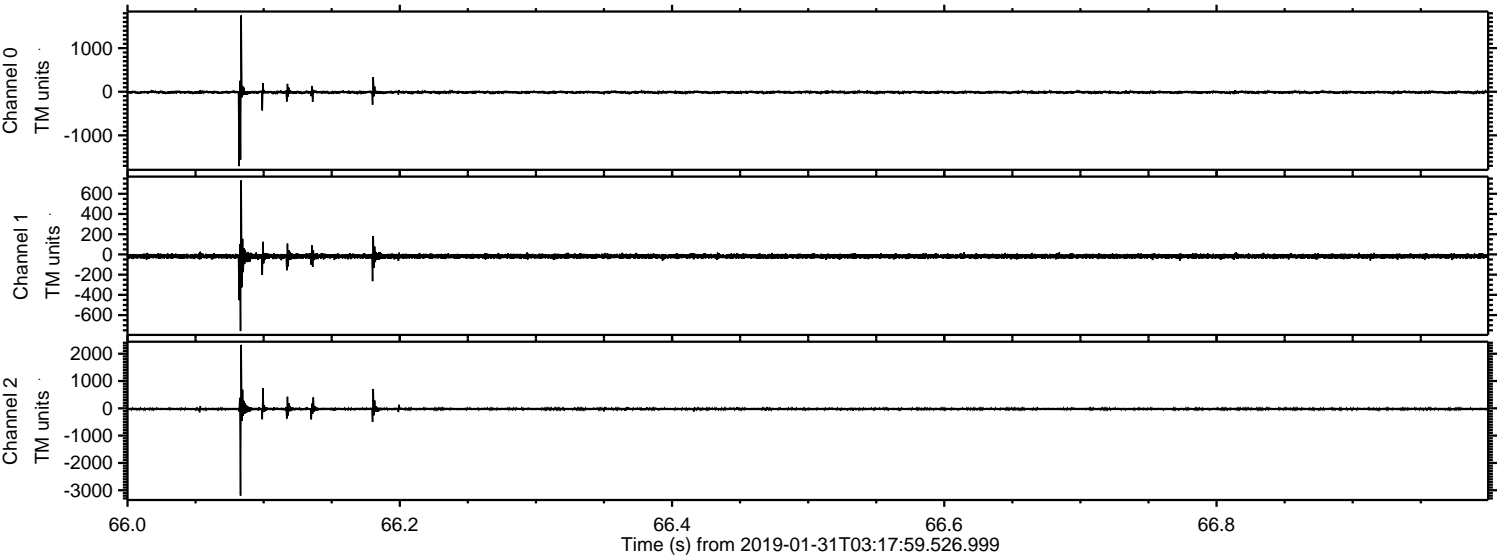


ELMAVAN 3D WAVEFORMS (Measured data sampled at 50 kHz) 51000 packets of 144 samples from 2019-01-31T03:17:59.526.999. Part 138/147

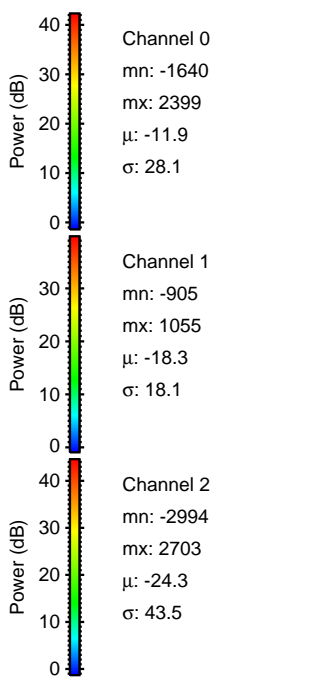
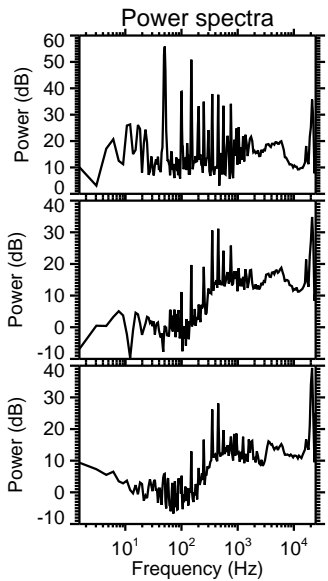
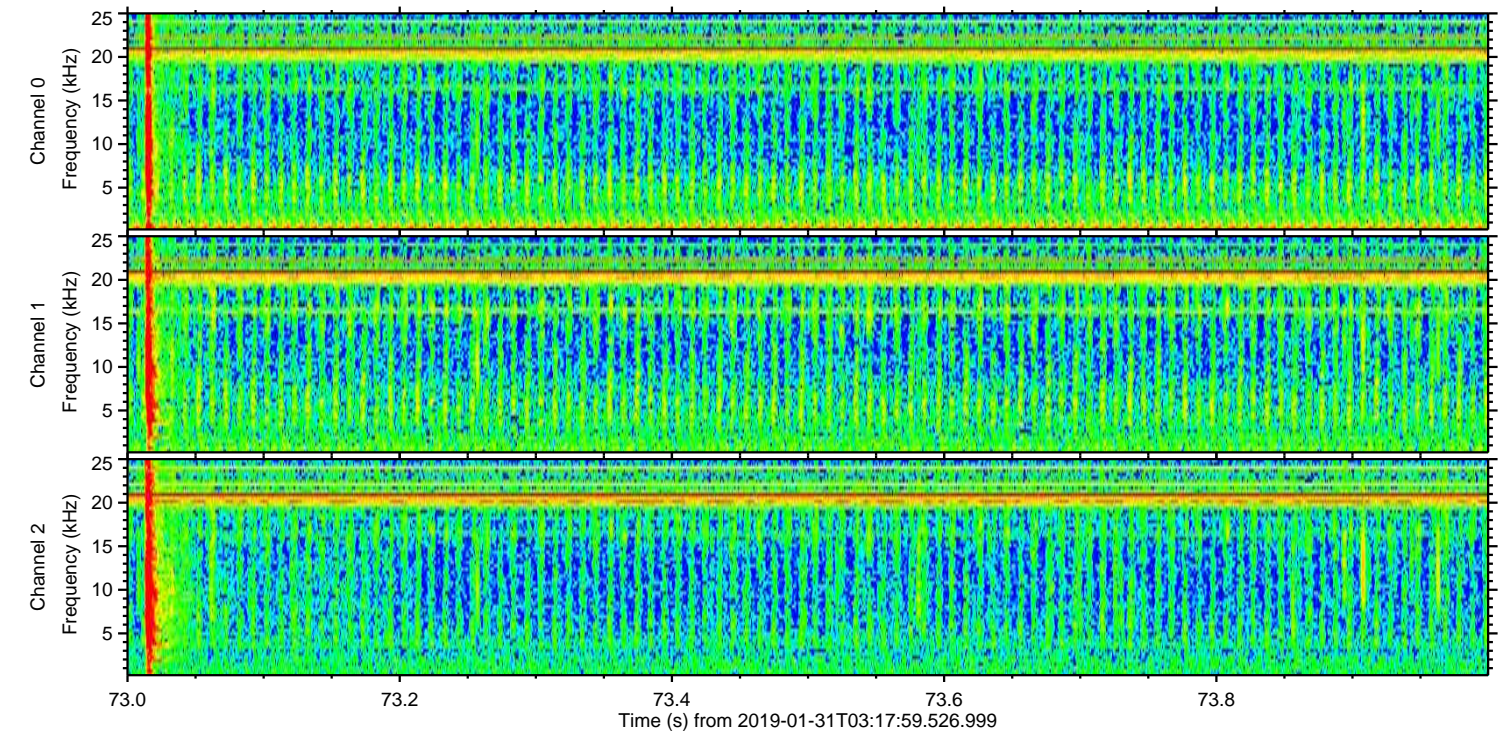
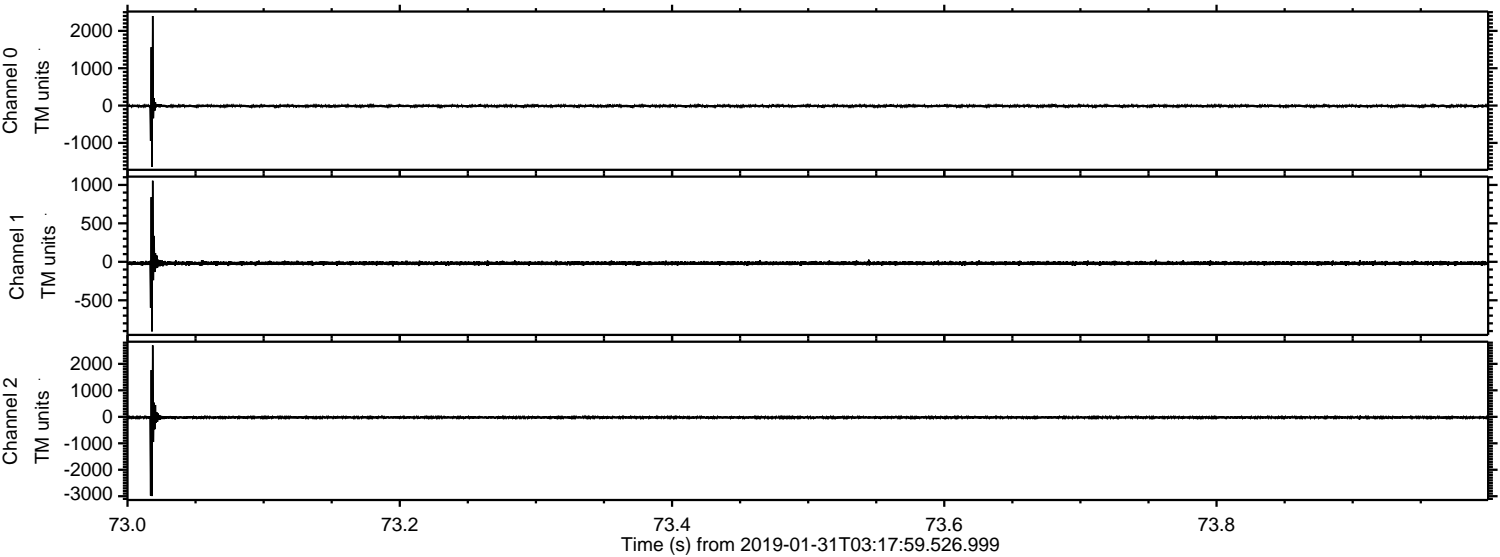
Processed Thu Jan 31 04:26:09 2019 by ELM ver.2012-10-06 from 001__elm20190131_031758__dat00.bin



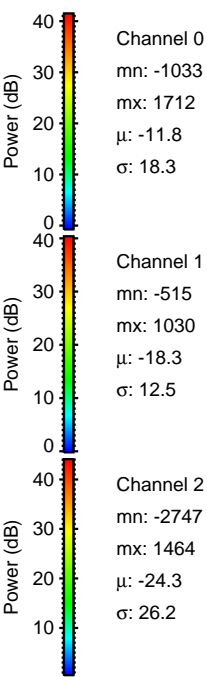
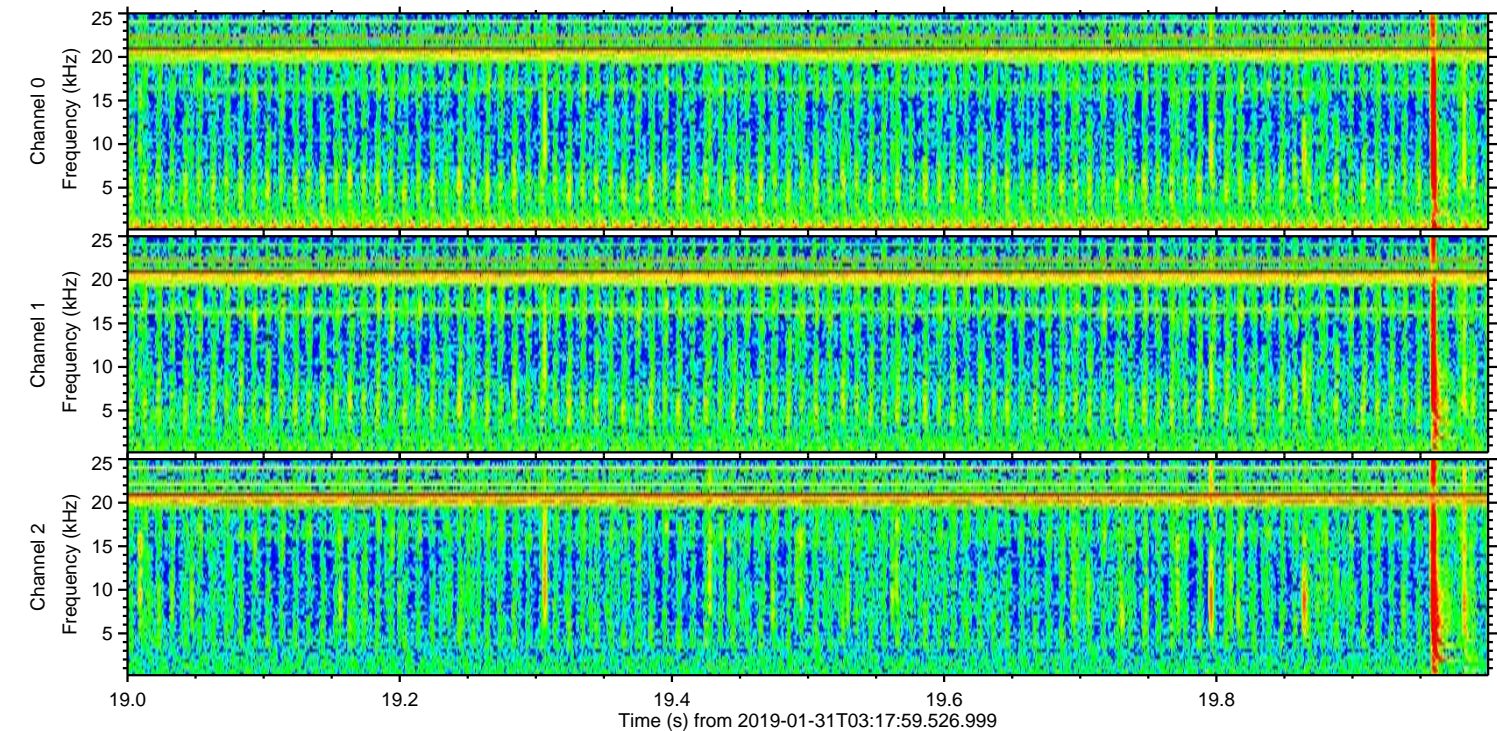
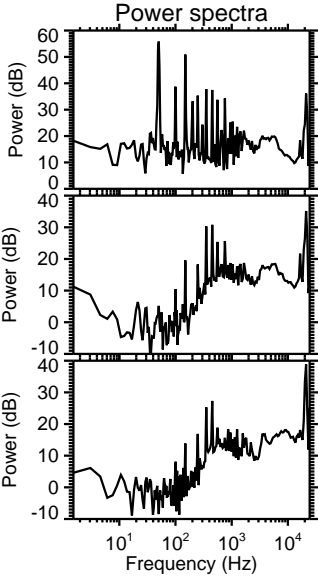
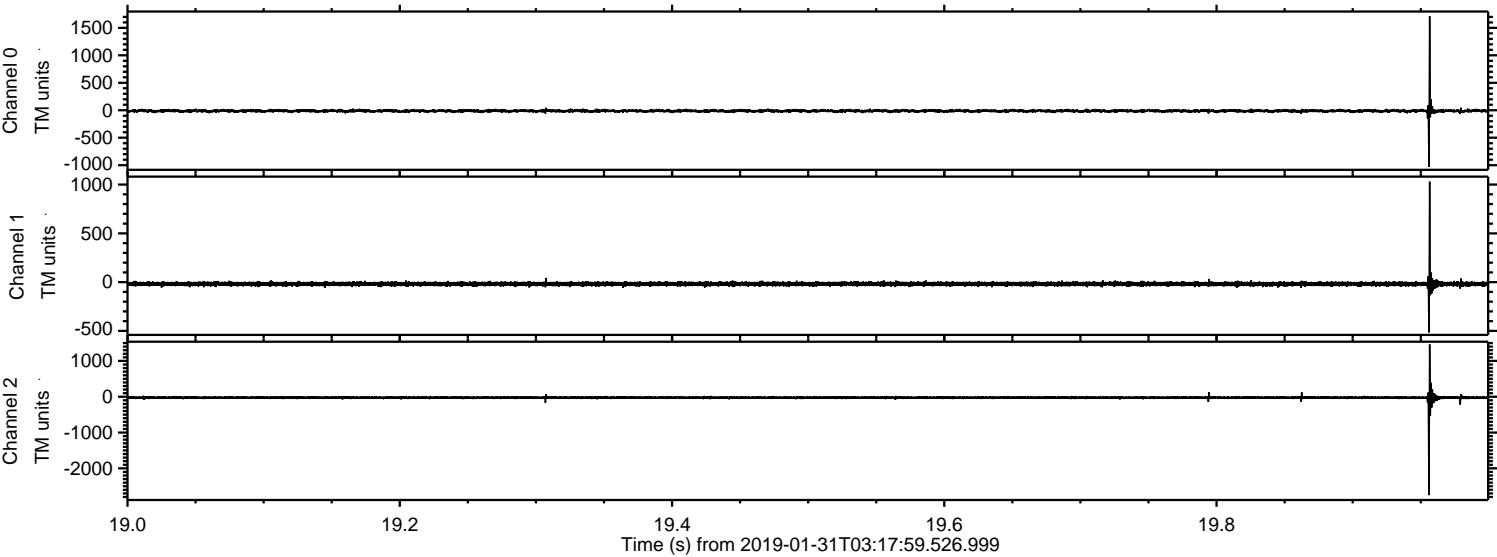
Processed Thu Jan 31 04:26:10 2019 by ELM ver.2012-10-06 from 001__elm20190131_031758__dat00.bin



Processed Thu Jan 31 04:26:11 2019 by ELM ver.2012-10-06 from 001__elm20190131_031758__dat00.bin



Processed Thu Jan 31 04:26:12 2019 by ELM ver.2012-10-06 from 001__elm20190131_031758__dat00.bin



Channel 0
mn: -1033
mx: 1712
 μ : -11.8
 σ : 18.3

Channel 1
mn: -515
mx: 1030
 μ : -18.3
 σ : 12.5

Channel 2
mn: -2747
mx: 1464
 μ : -24.3
 σ : 26.2

Processed Thu Jan 31 04:26:12 2019 by ELM ver.2012-10-06 from 001__elm20190131_031758__dat00.bin

