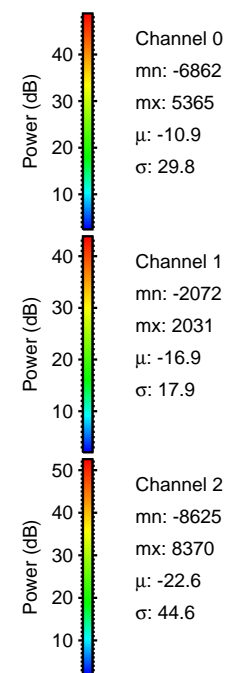
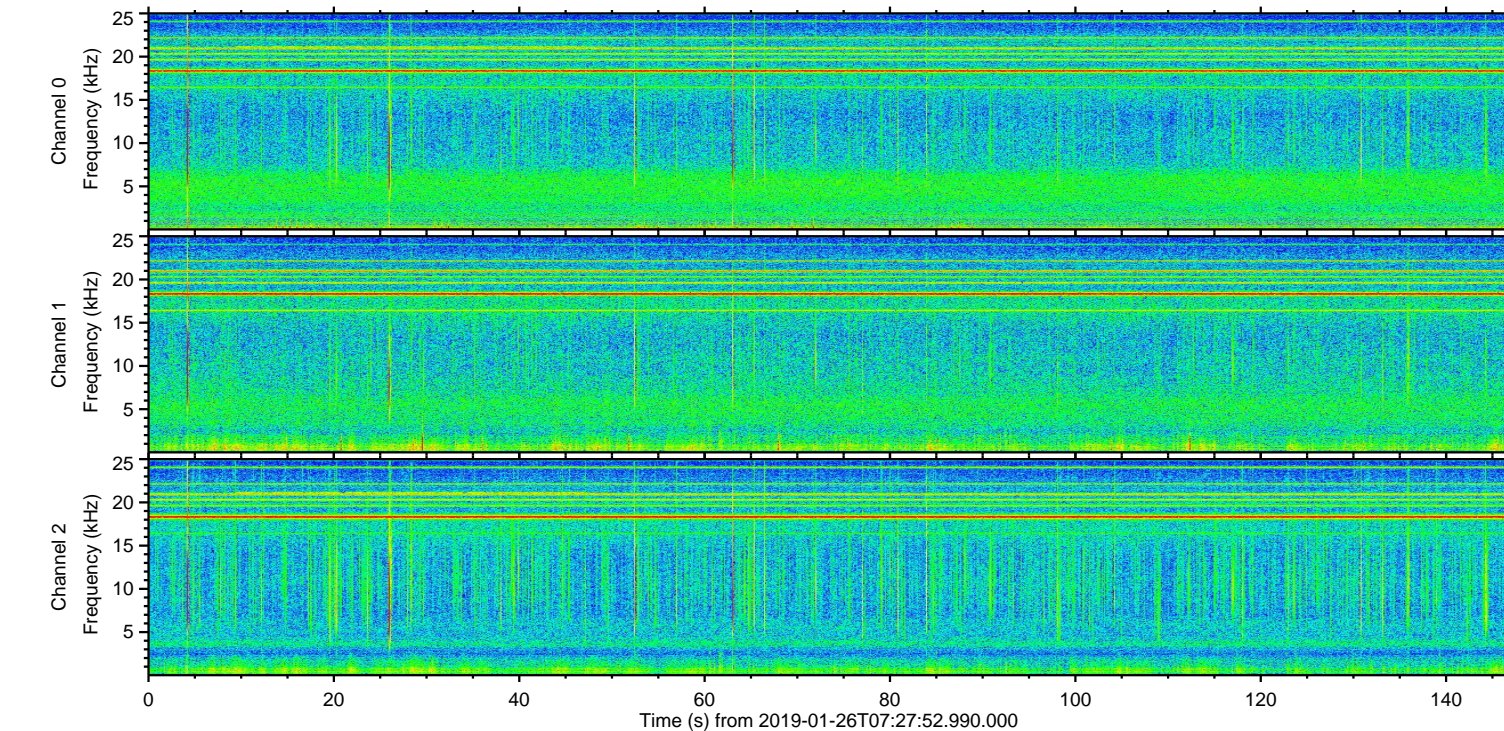
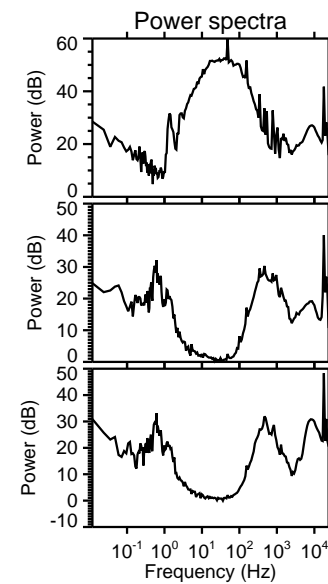
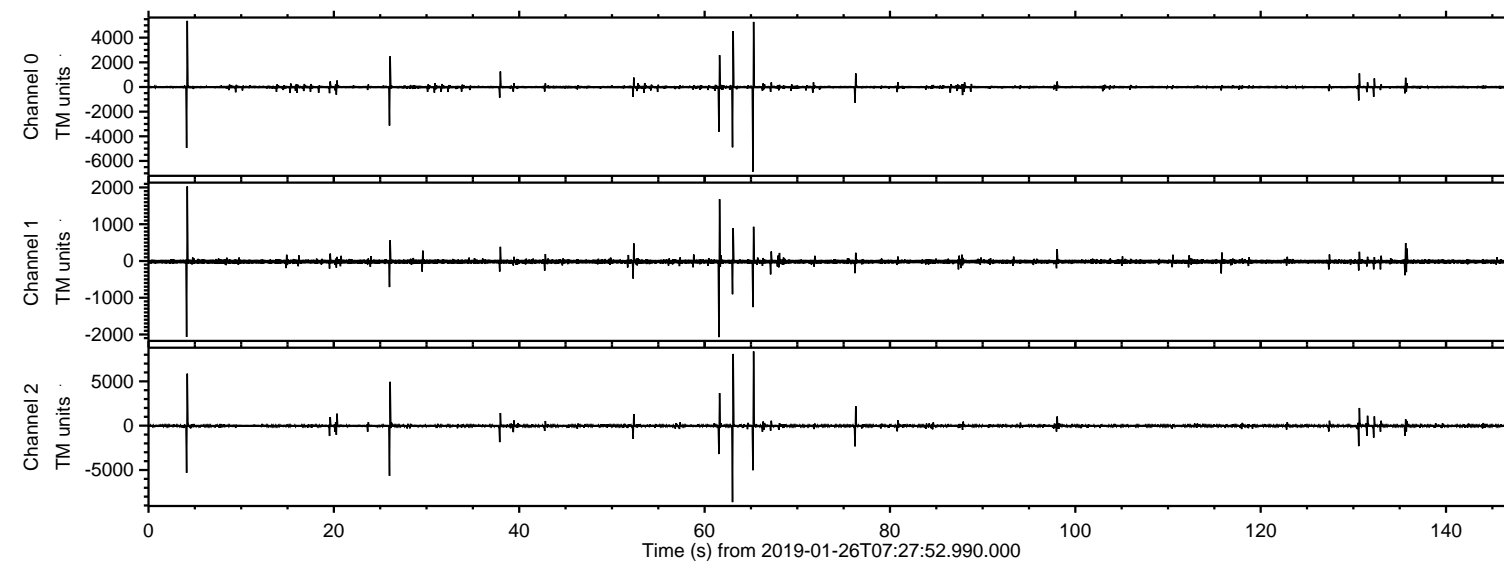
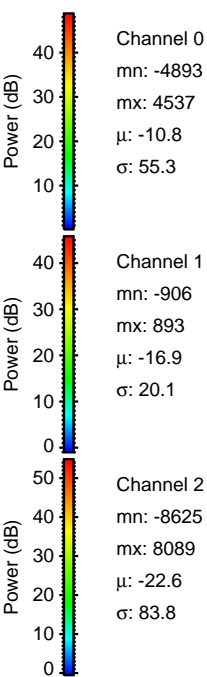
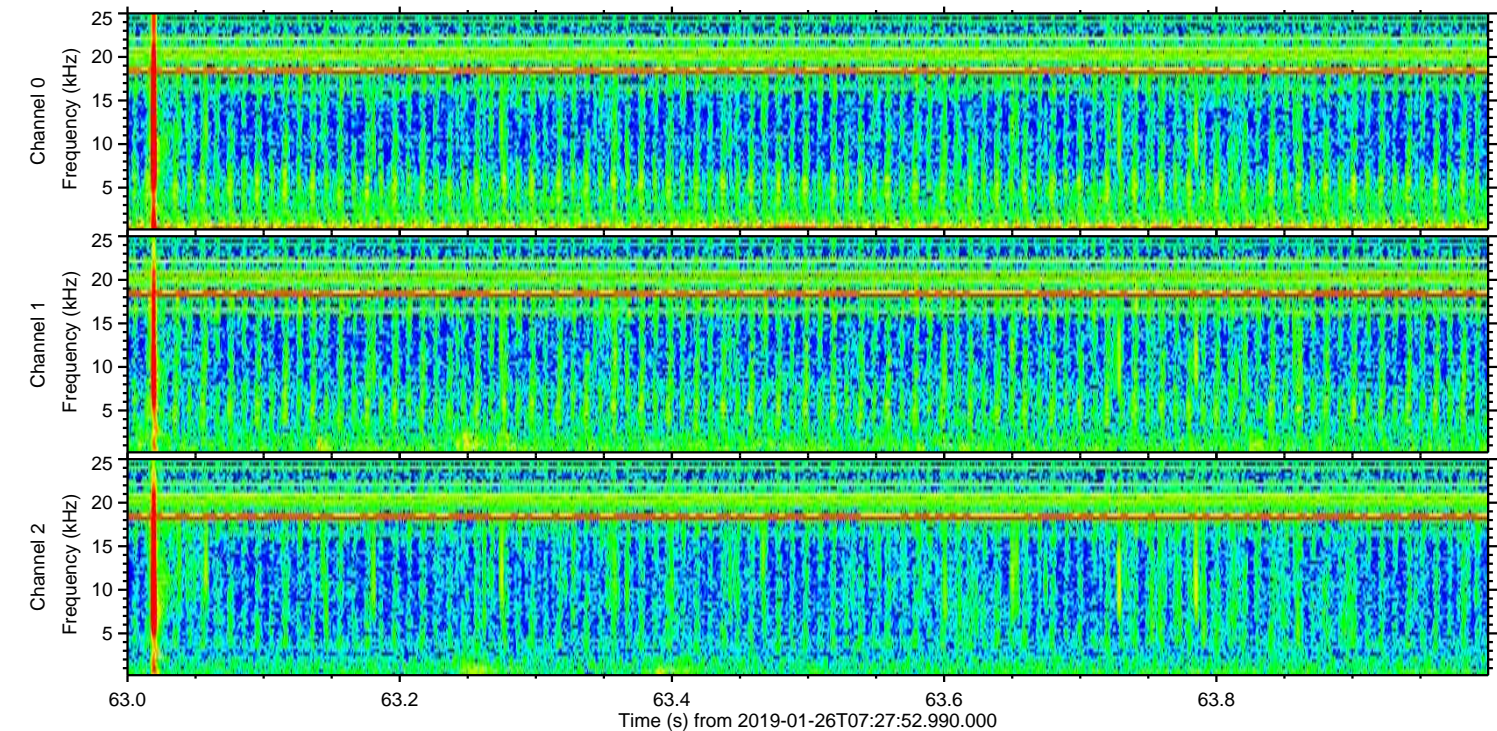
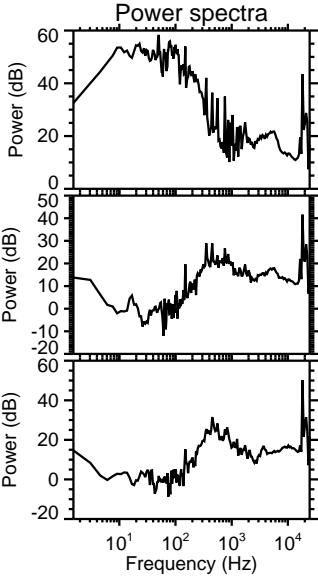
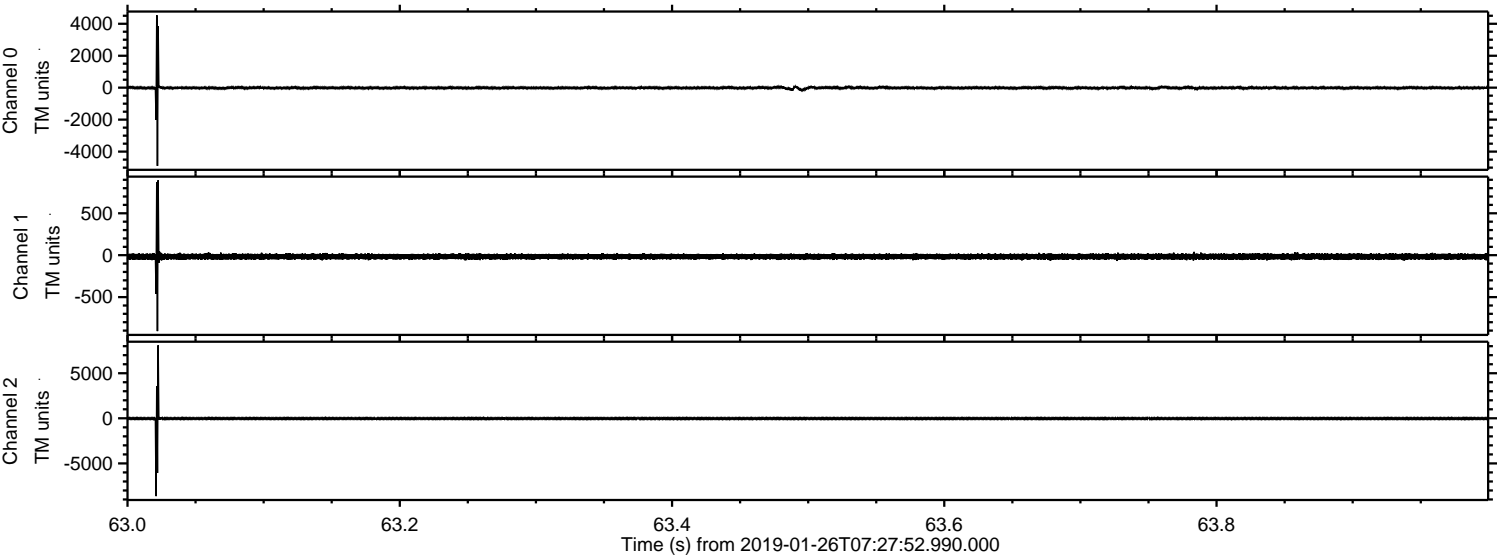


ELMAVAN 3D WAVEFORMS (Measured data sampled at 50 kHz) 51000 packets of 144 samples from 2019-01-26T07:27:52.990.000.

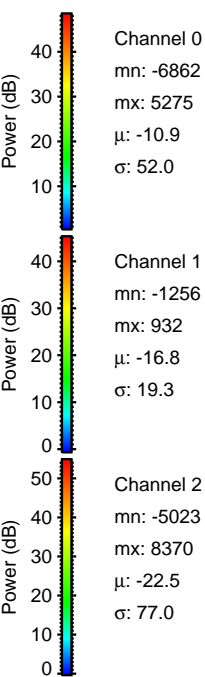
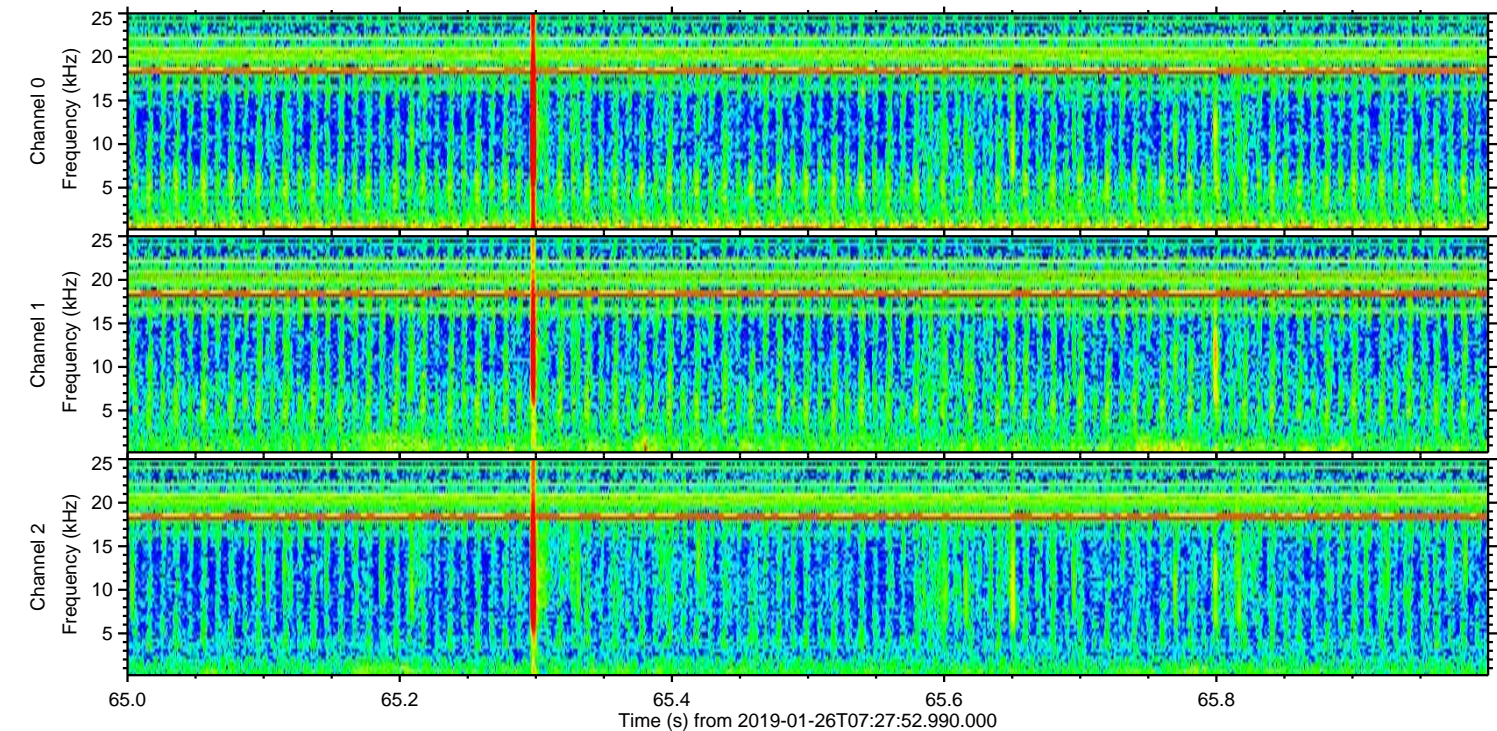
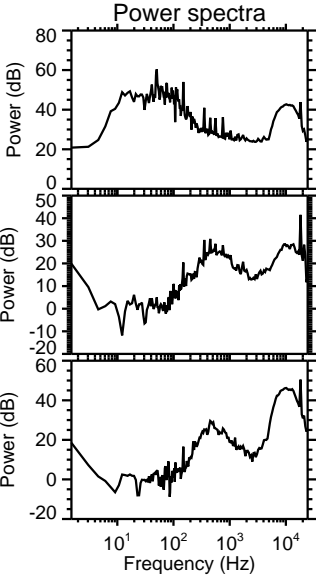
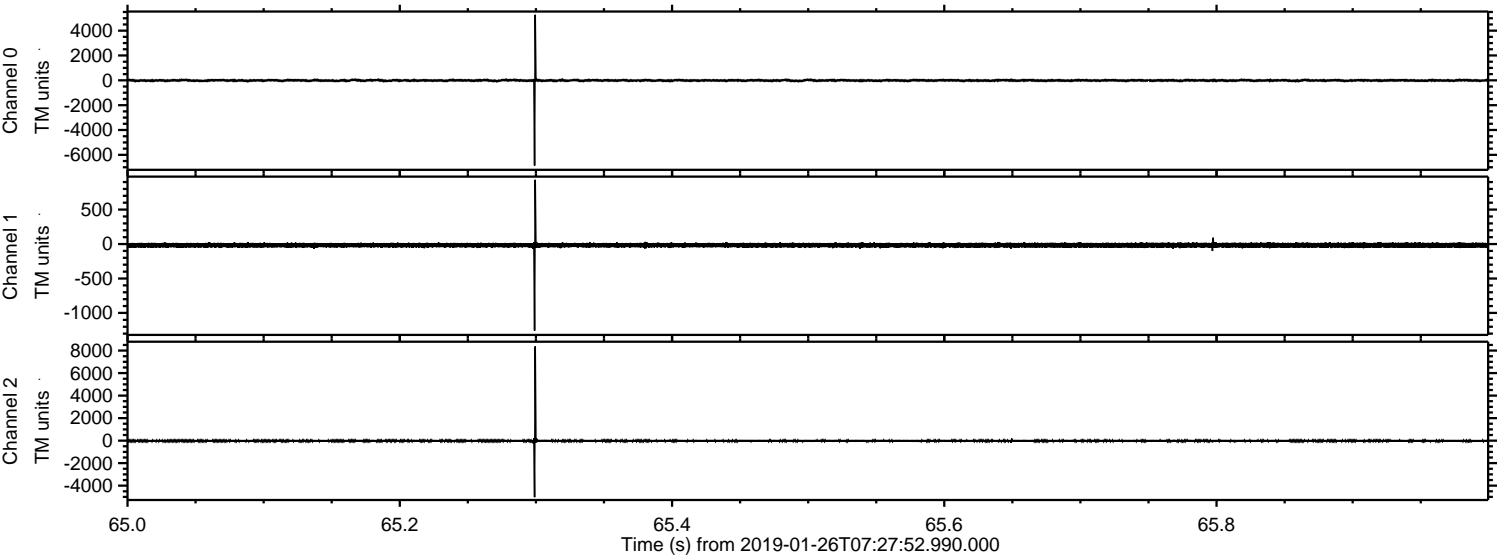
Processed Sat Jan 26 08:35:12 2019 by ELM ver.2012-10-06 from 001__elm20190126_072751__dat00.bin



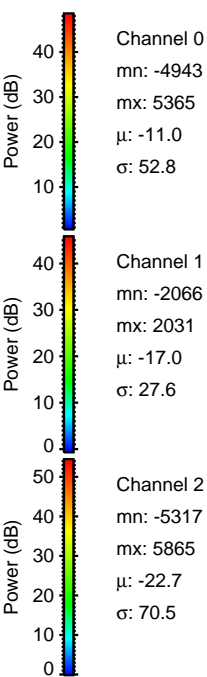
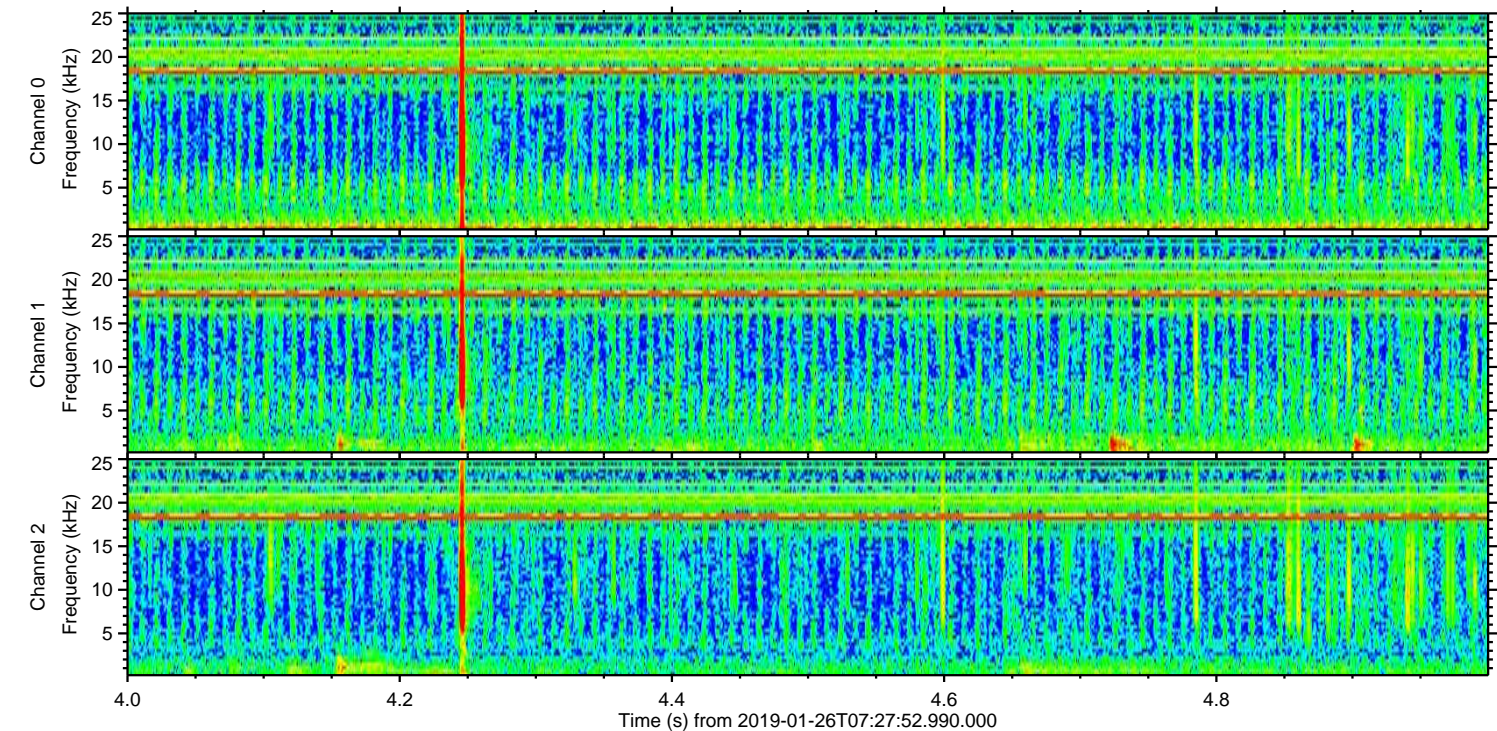
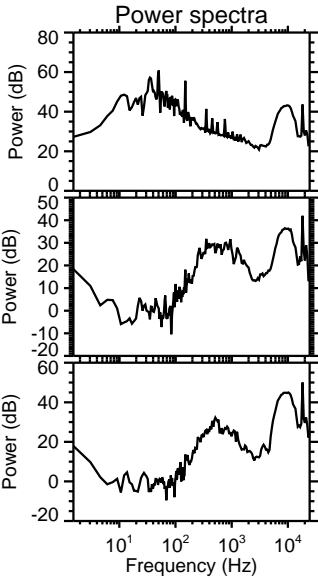
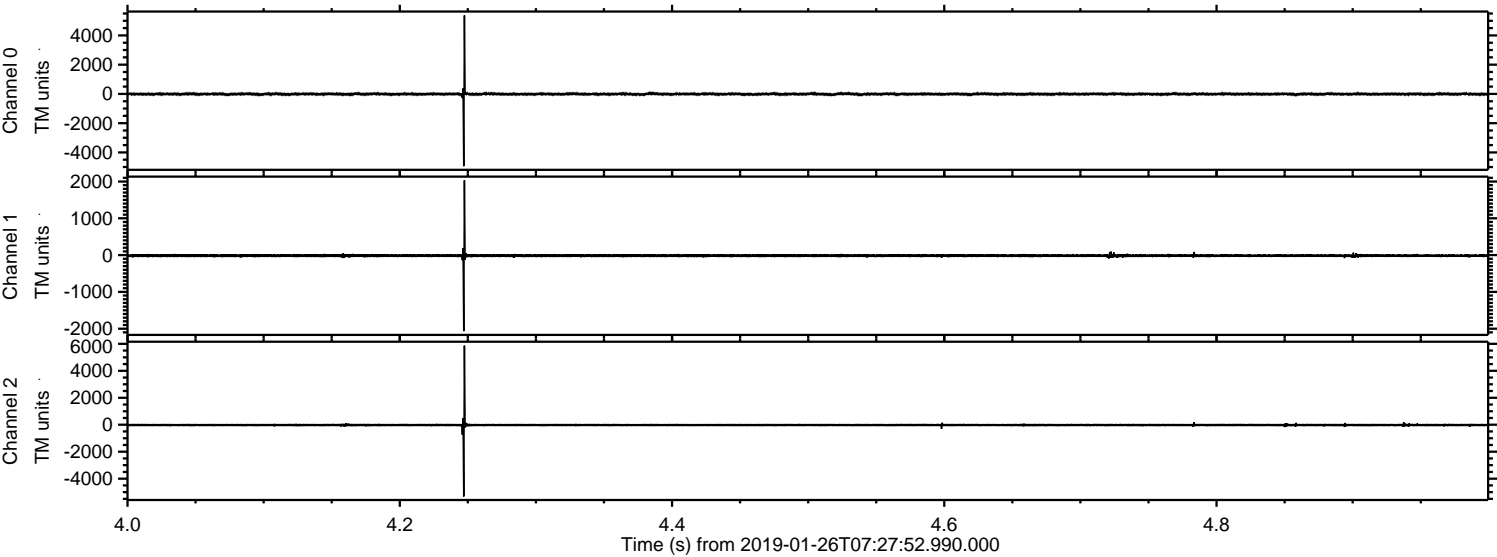
Processed Sat Jan 26 08:35:18 2019 by ELM ver.2012-10-06 from 001__elm20190126_072751__dat00.bin



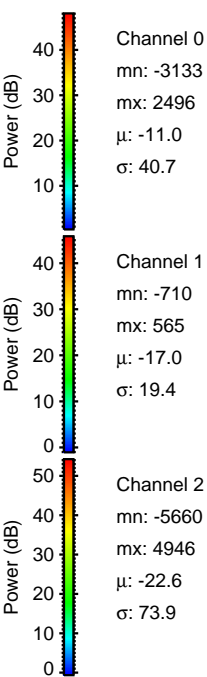
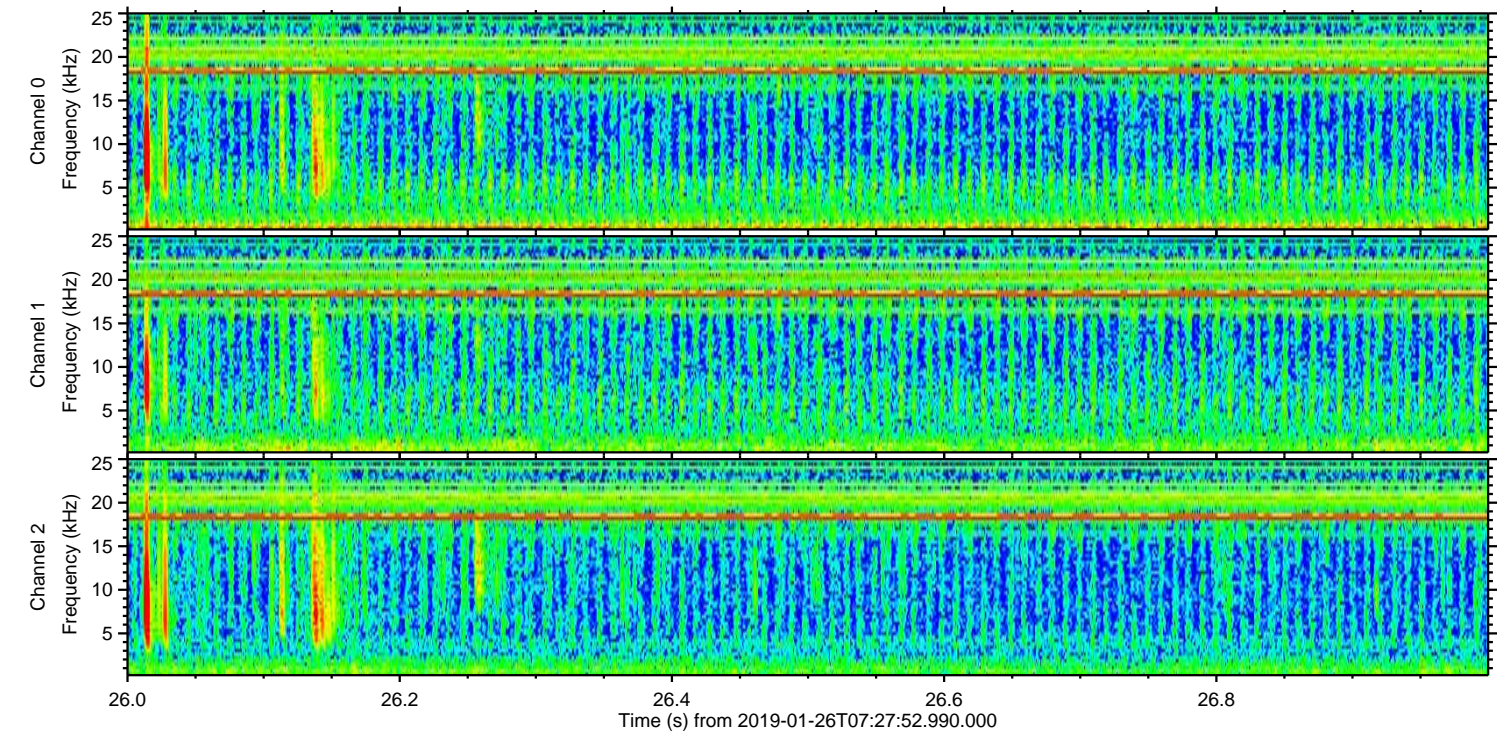
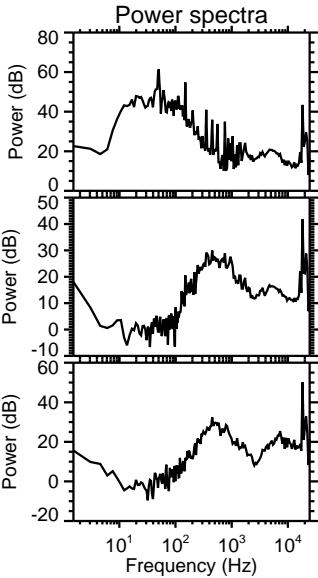
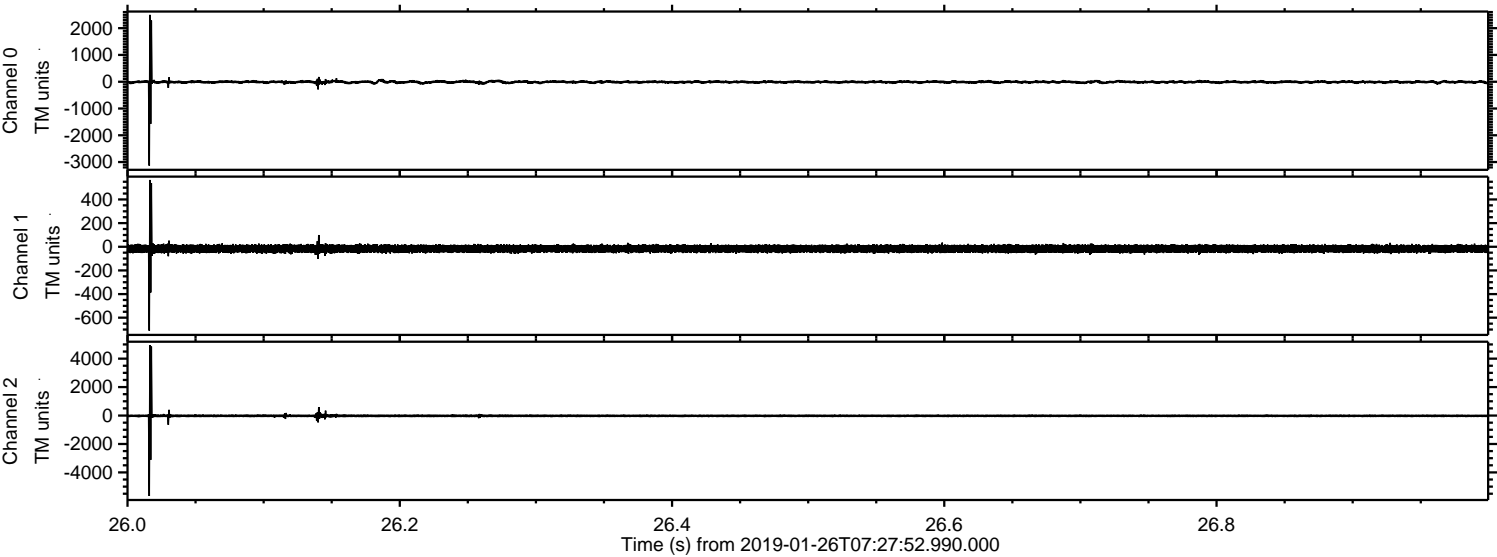
Processed Sat Jan 26 08:35:19 2019 by ELM ver.2012-10-06 from 001__elm20190126_072751__dat00.bin



Processed Sat Jan 26 08:35:20 2019 by ELM ver.2012-10-06 from 001__elm20190126_072751__dat00.bin



Processed Sat Jan 26 08:35:20 2019 by ELM ver.2012-10-06 from 001__elm20190126_072751__dat00.bin

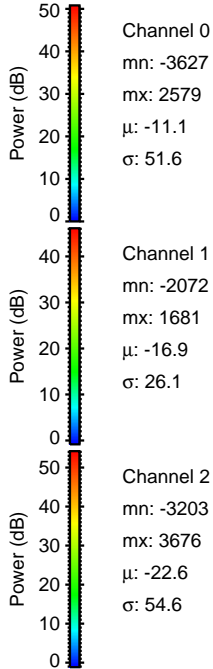
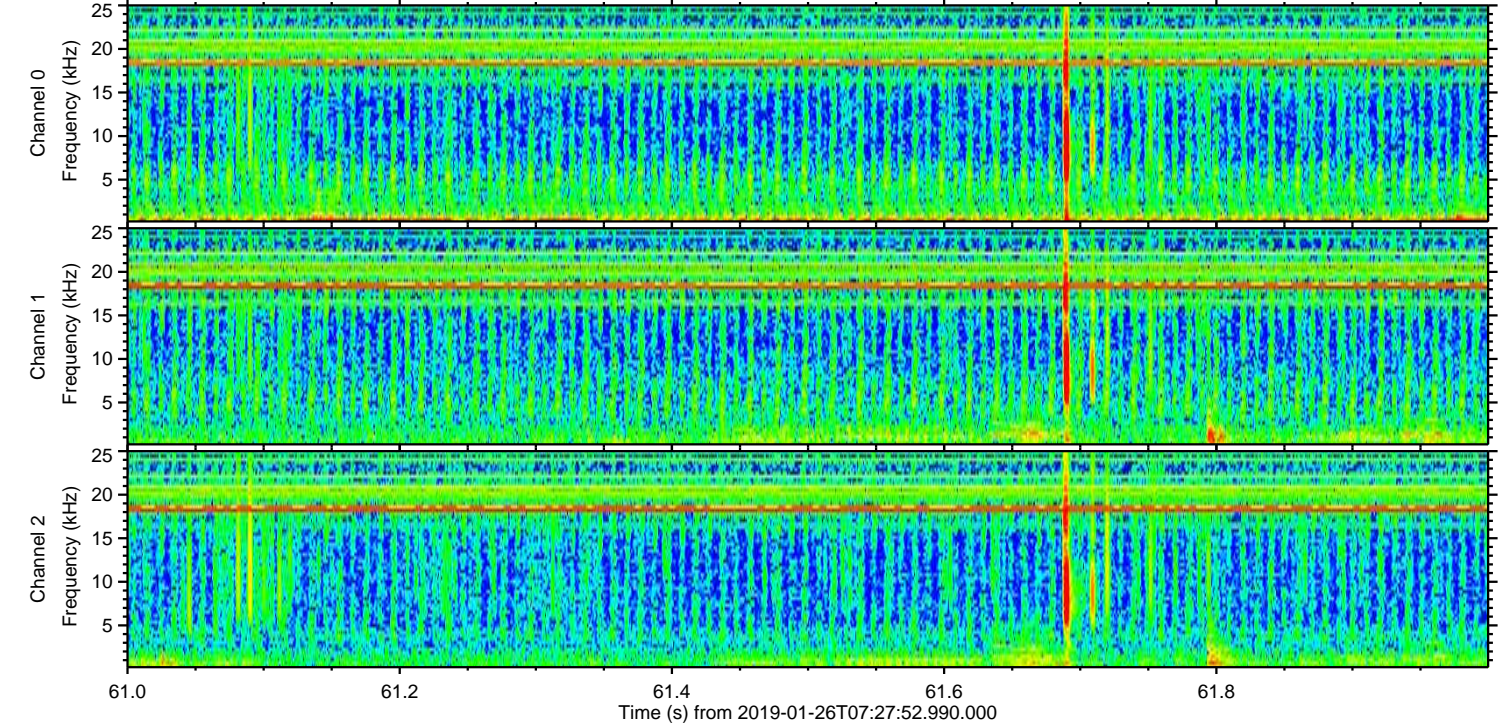
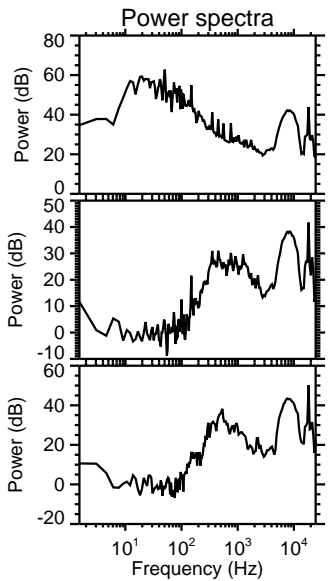
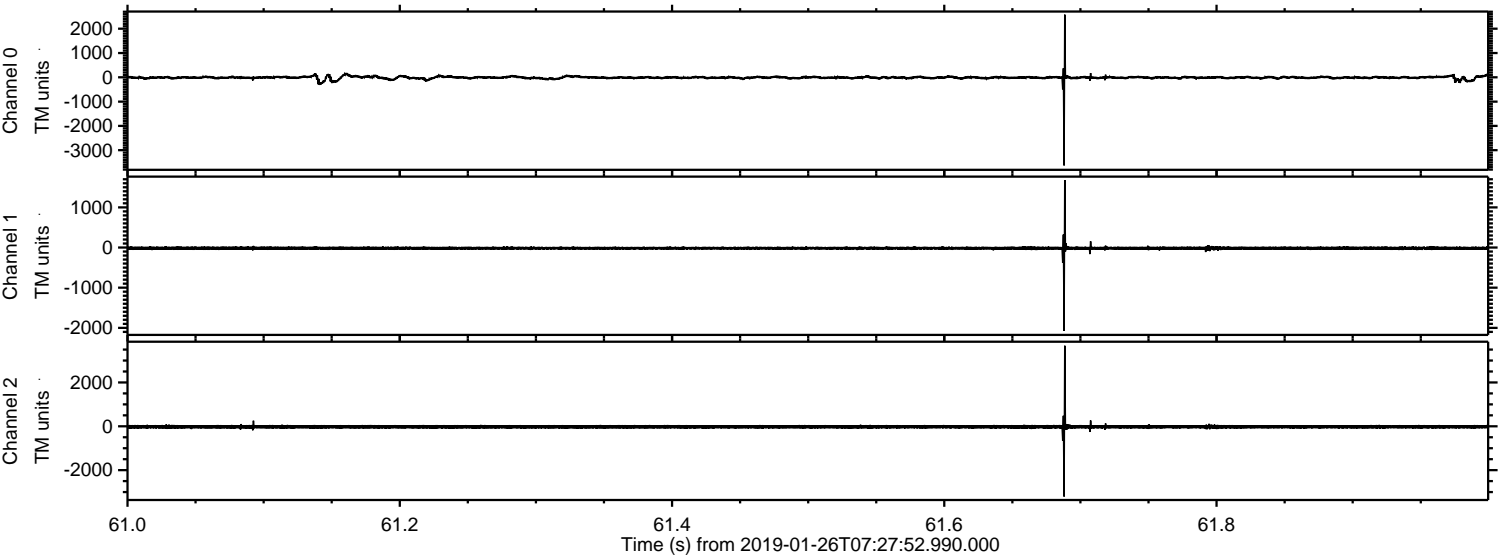


Channel 0
mn: -3133
mx: 2496
 μ : -11.0
 σ : 40.7

Channel 1
mn: -710
mx: 565
 μ : -17.0
 σ : 19.4

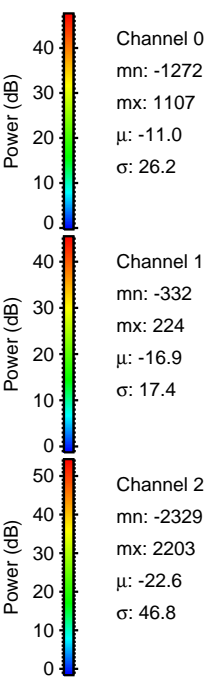
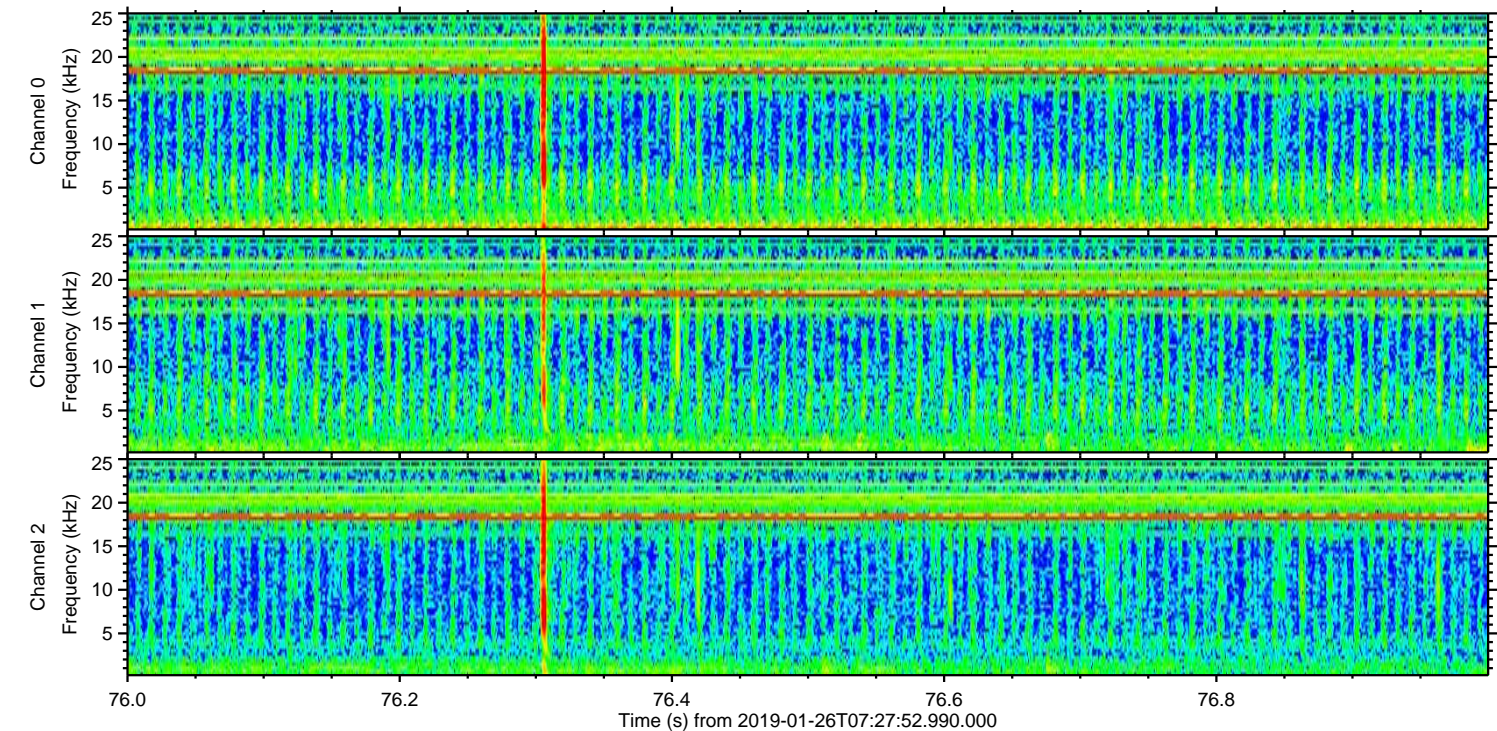
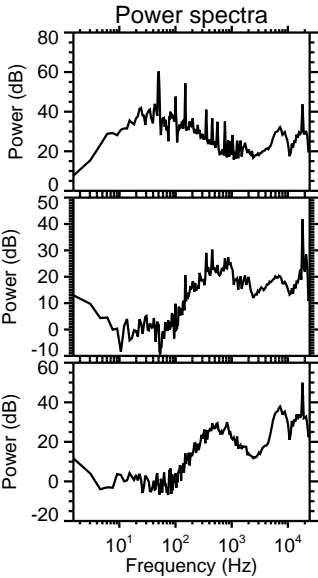
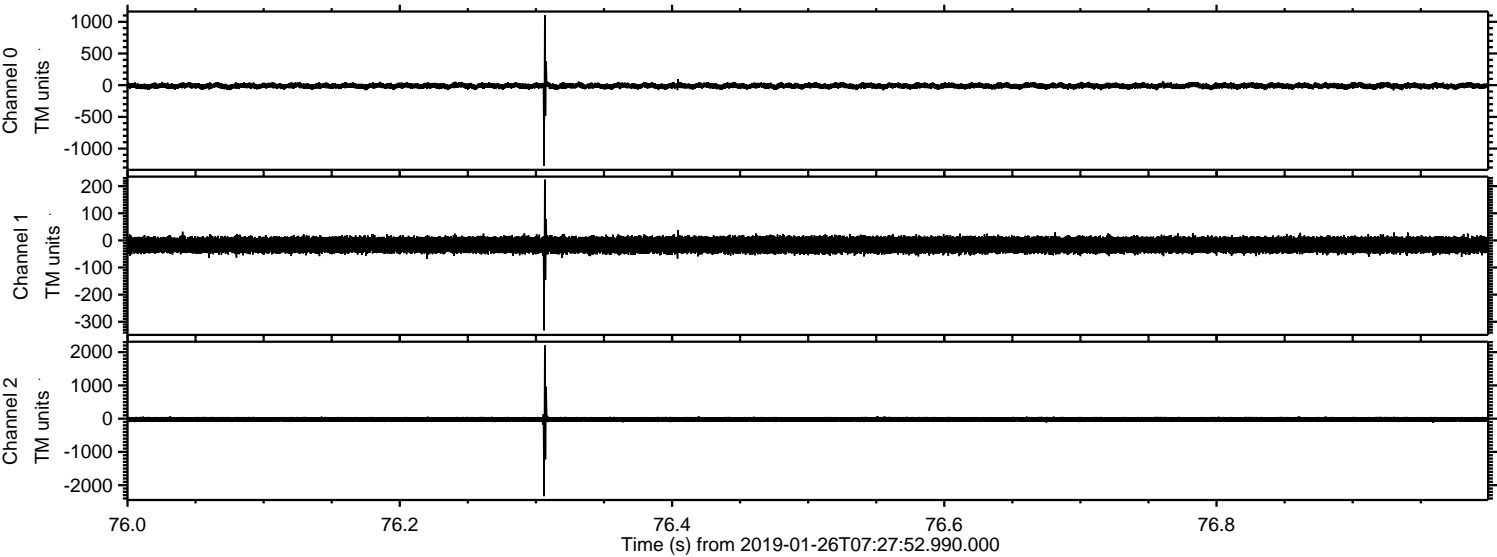
Channel 2
mn: -5660
mx: 4946
 μ : -22.6
 σ : 73.9

Processed Sat Jan 26 08:35:21 2019 by ELM ver.2012-10-06 from 001__elm20190126_072751__dat00.bin



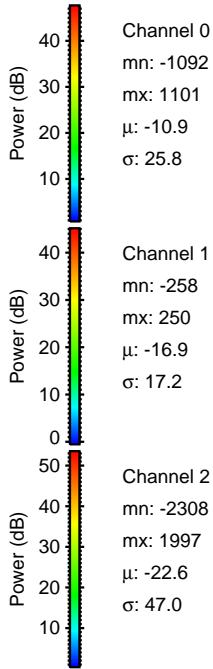
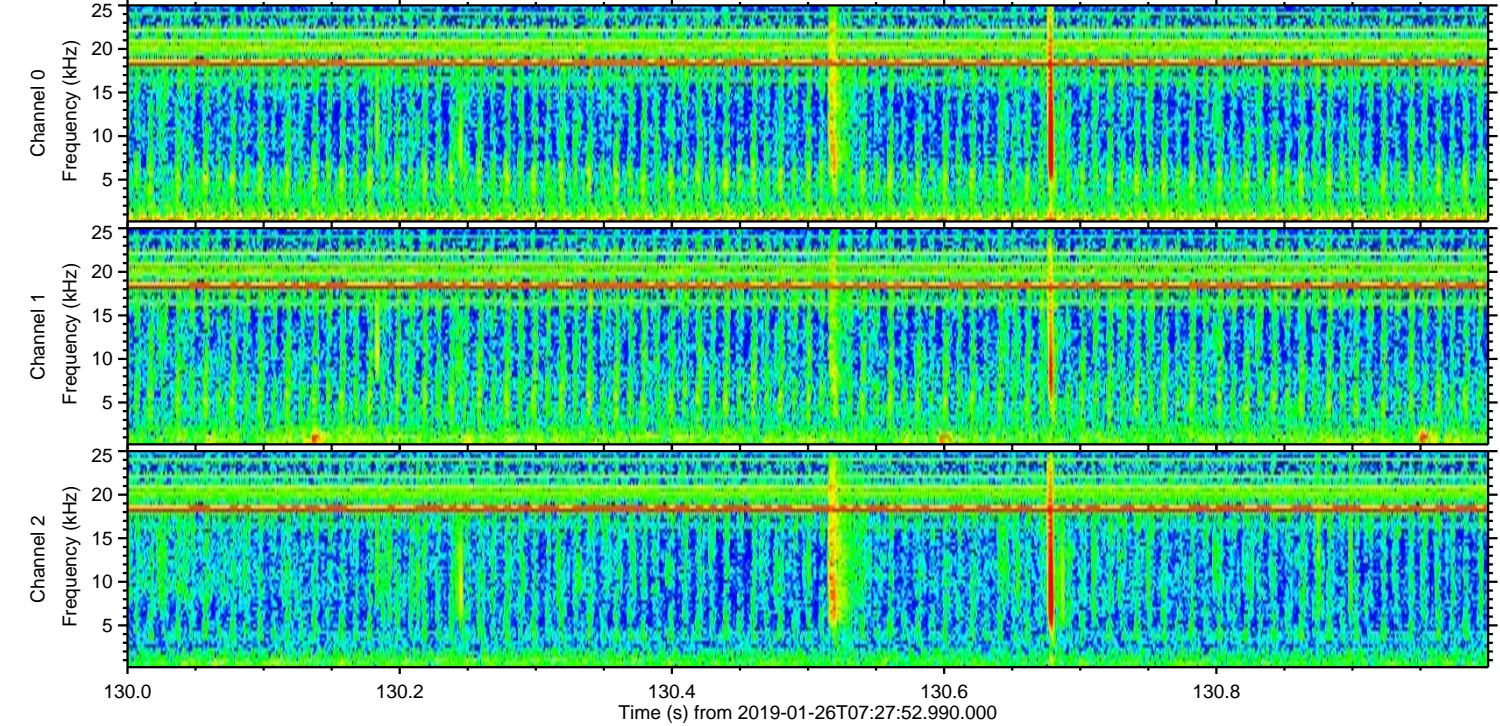
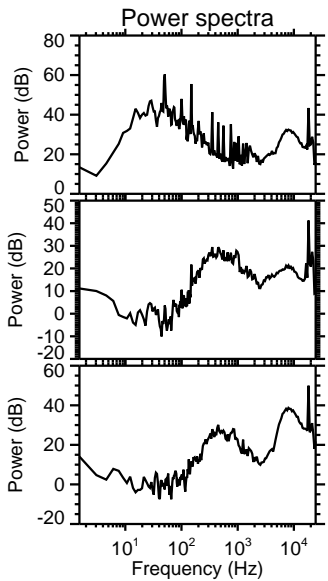
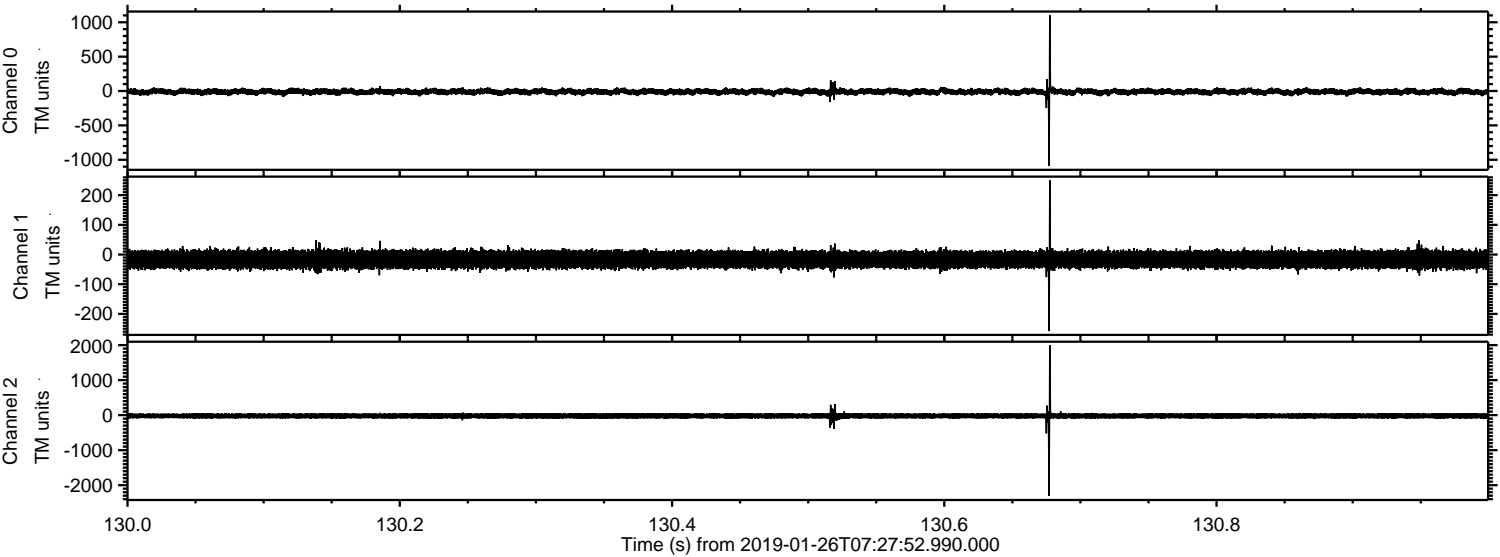
ELMAVAN 3D WAVEFORMS (Measured data sampled at 50 kHz) 51000 packets of 144 samples from 2019-01-26T07:27:52.990.000. Part 77/147

Processed Sat Jan 26 08:35:21 2019 by ELM ver.2012-10-06 from 001__elm20190126_072751__dat00.bin

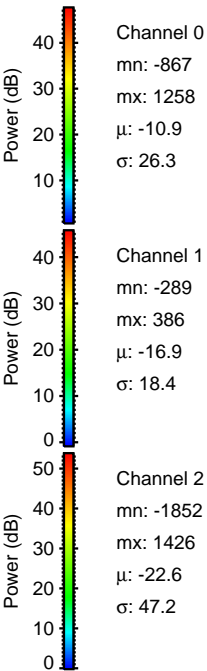
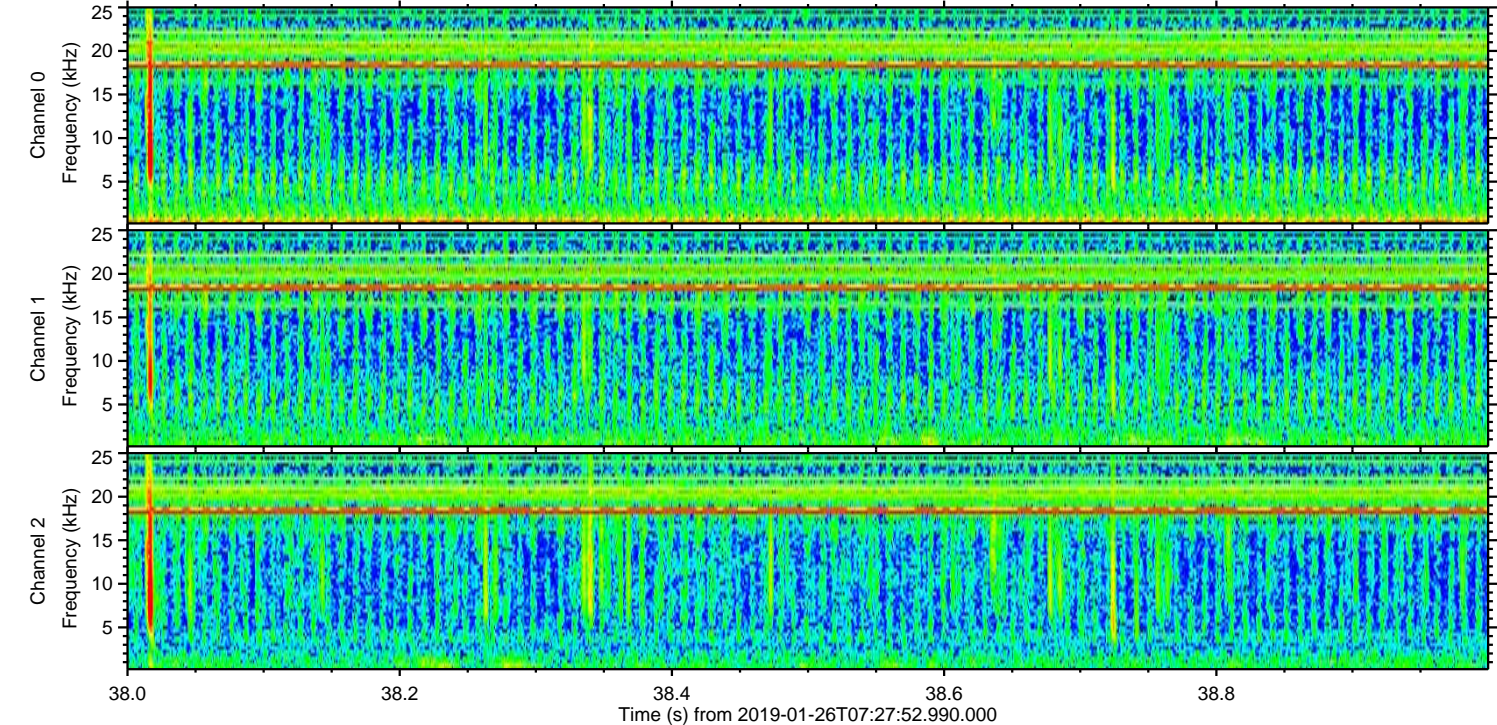
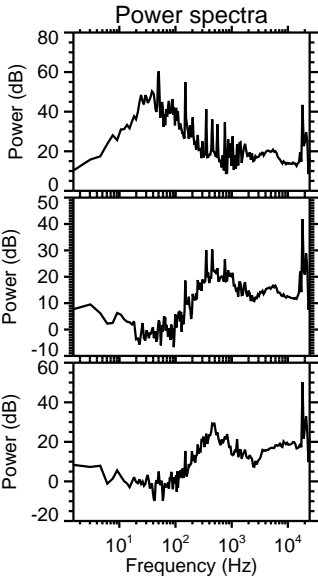
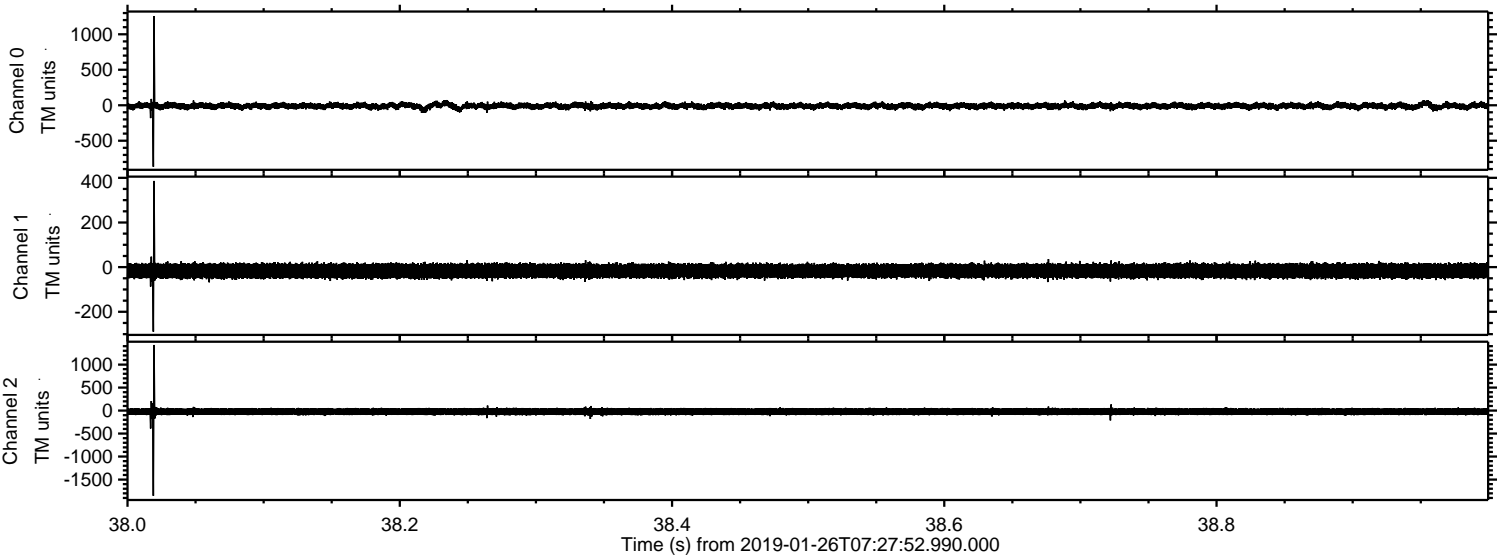


ELMAVAN 3D WAVEFORMS (Measured data sampled at 50 kHz) 51000 packets of 144 samples from 2019-01-26T07:27:52.990.000. Part 131/147

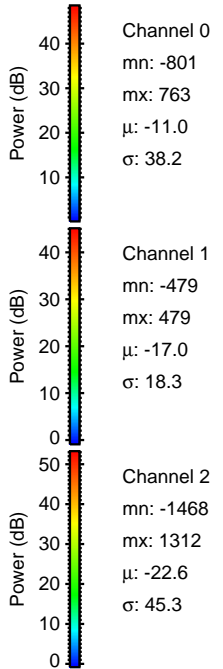
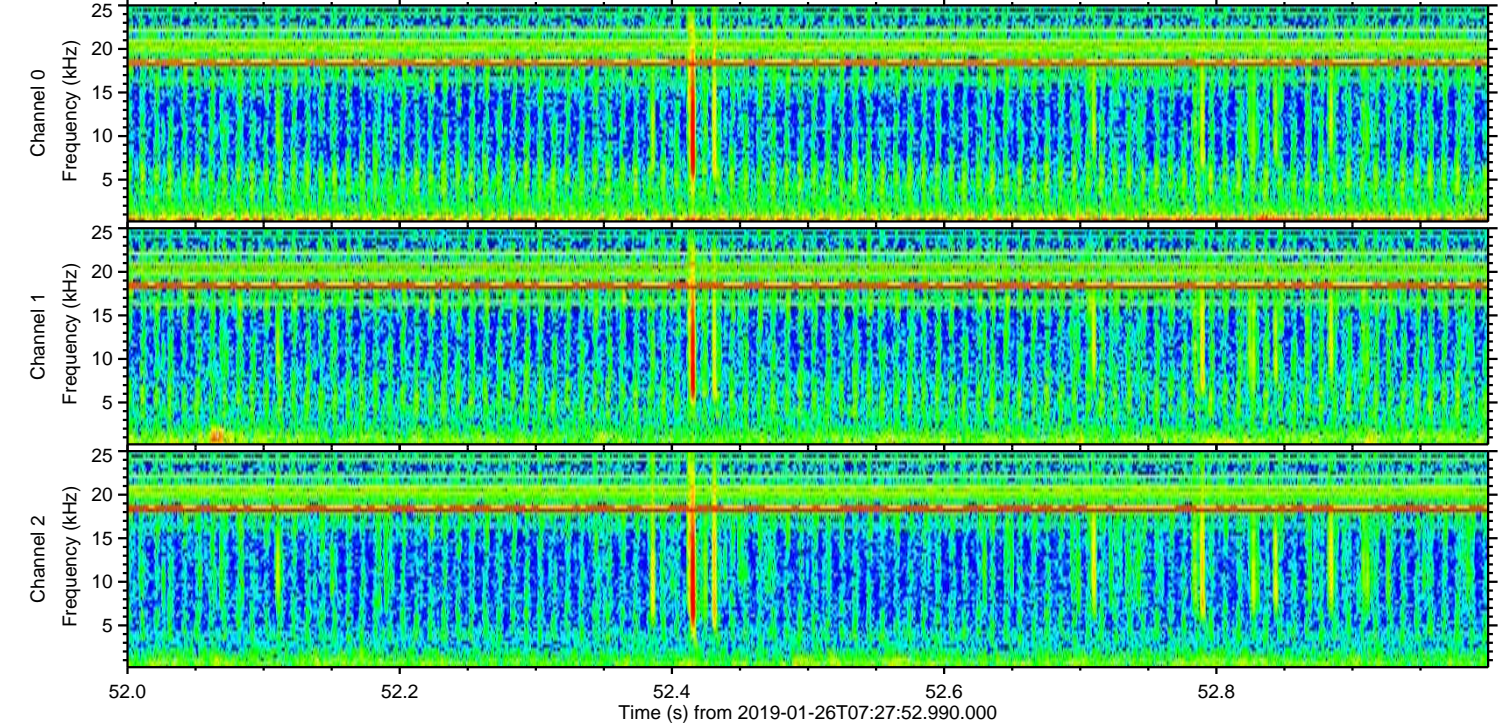
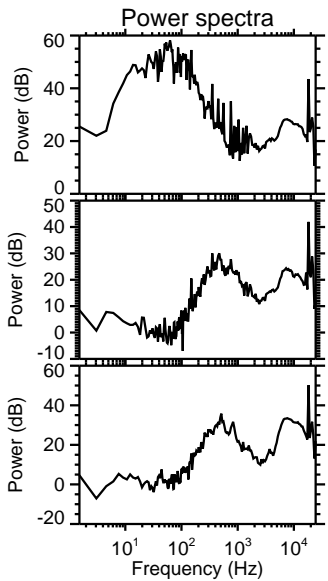
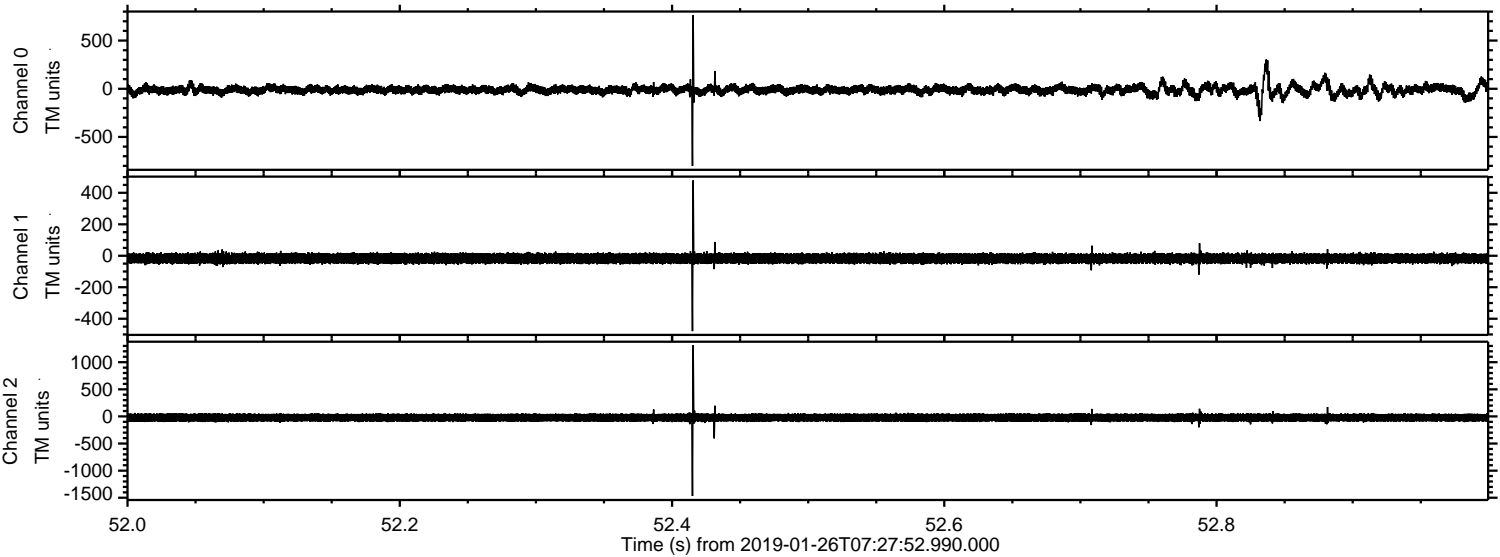
Processed Sat Jan 26 08:35:22 2019 by ELM ver.2012-10-06 from 001__elm20190126_072751__dat00.bin



Processed Sat Jan 26 08:35:23 2019 by ELM ver.2012-10-06 from 001__elm20190126_072751__dat00.bin



Processed Sat Jan 26 08:35:23 2019 by ELM ver.2012-10-06 from 001__elm20190126_072751__dat00.bin



Processed Sat Jan 26 08:35:24 2019 by ELM ver.2012-10-06 from 001__elm20190126_072751__dat00.bin

