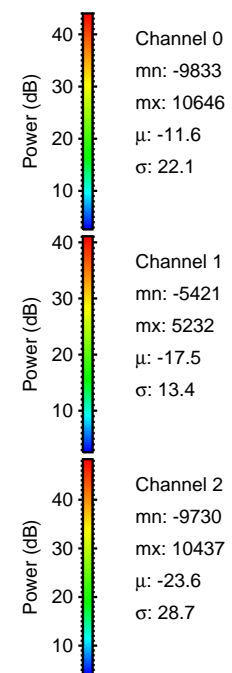
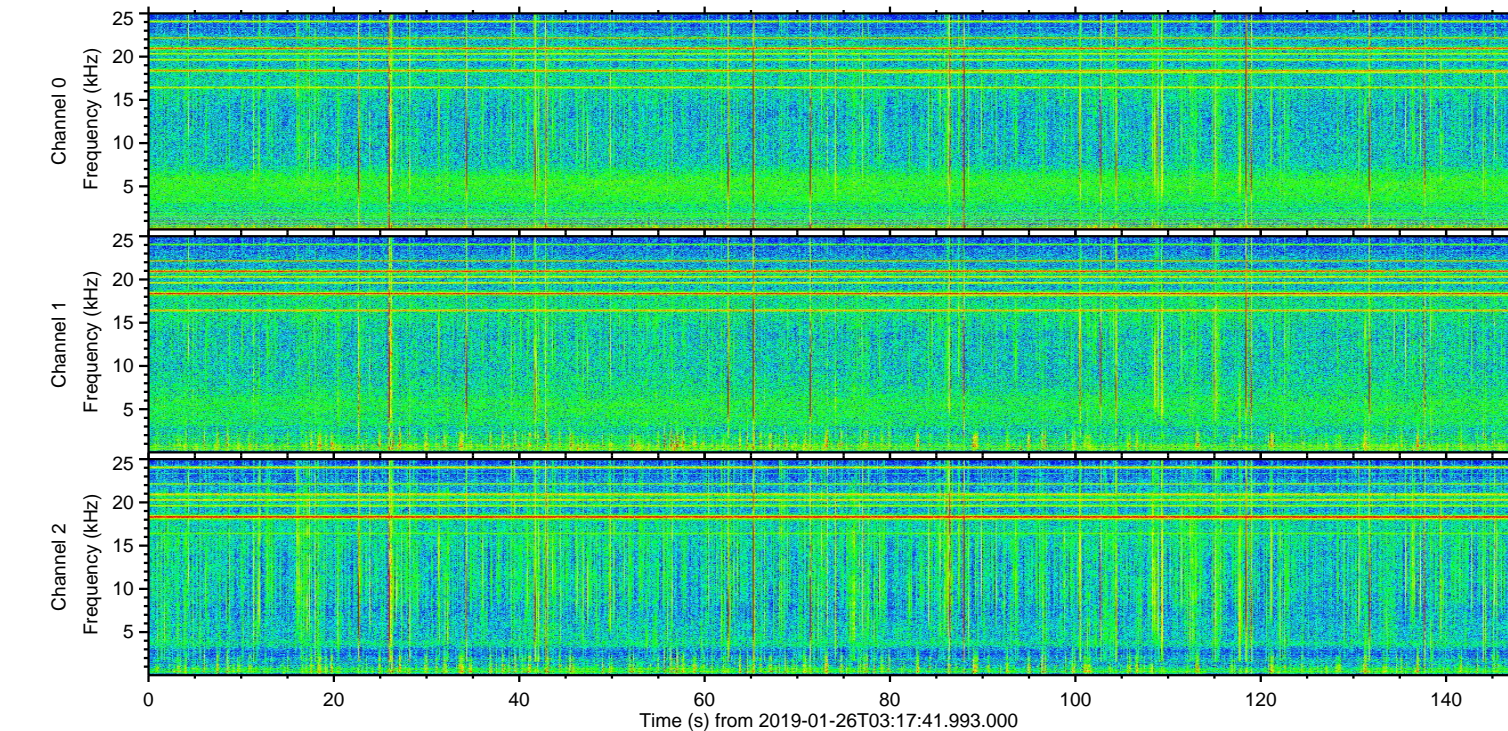
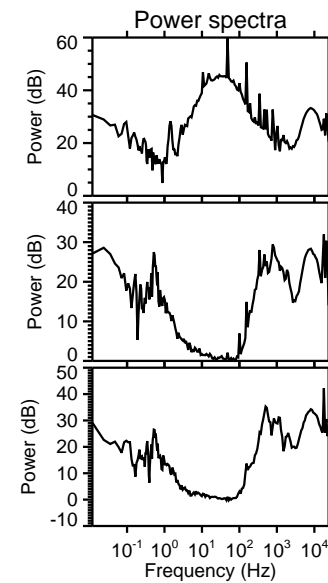
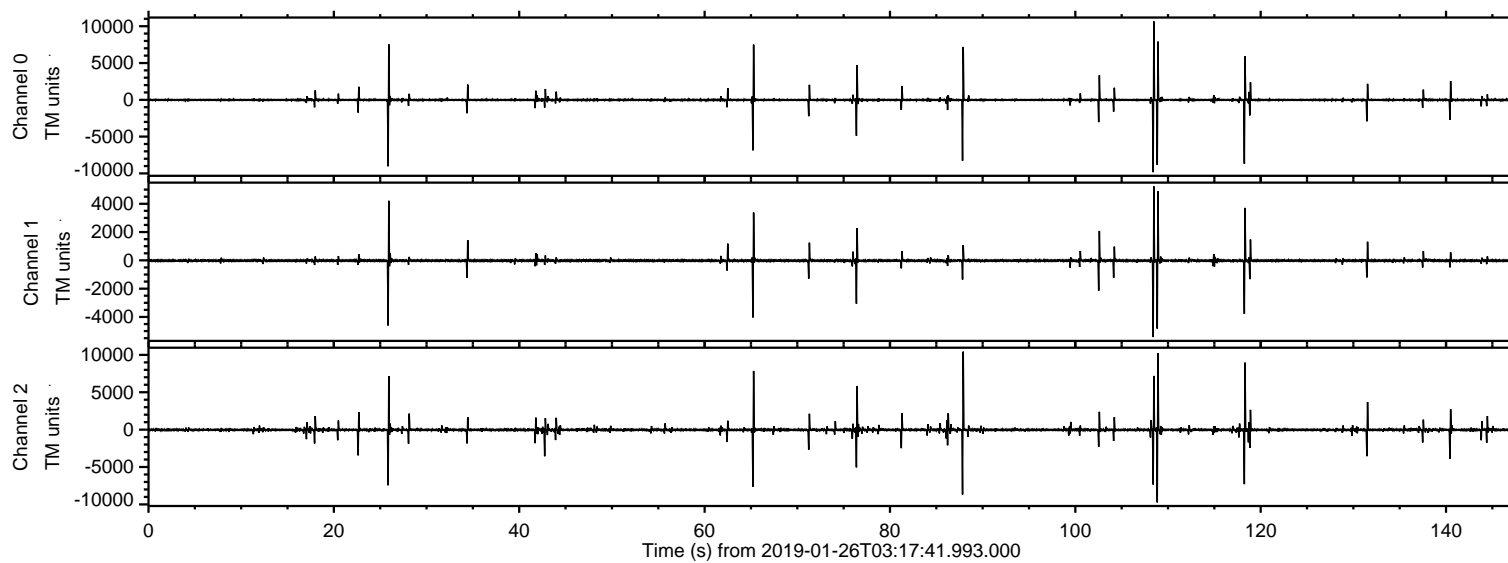


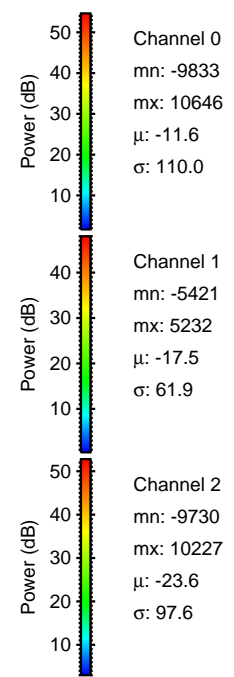
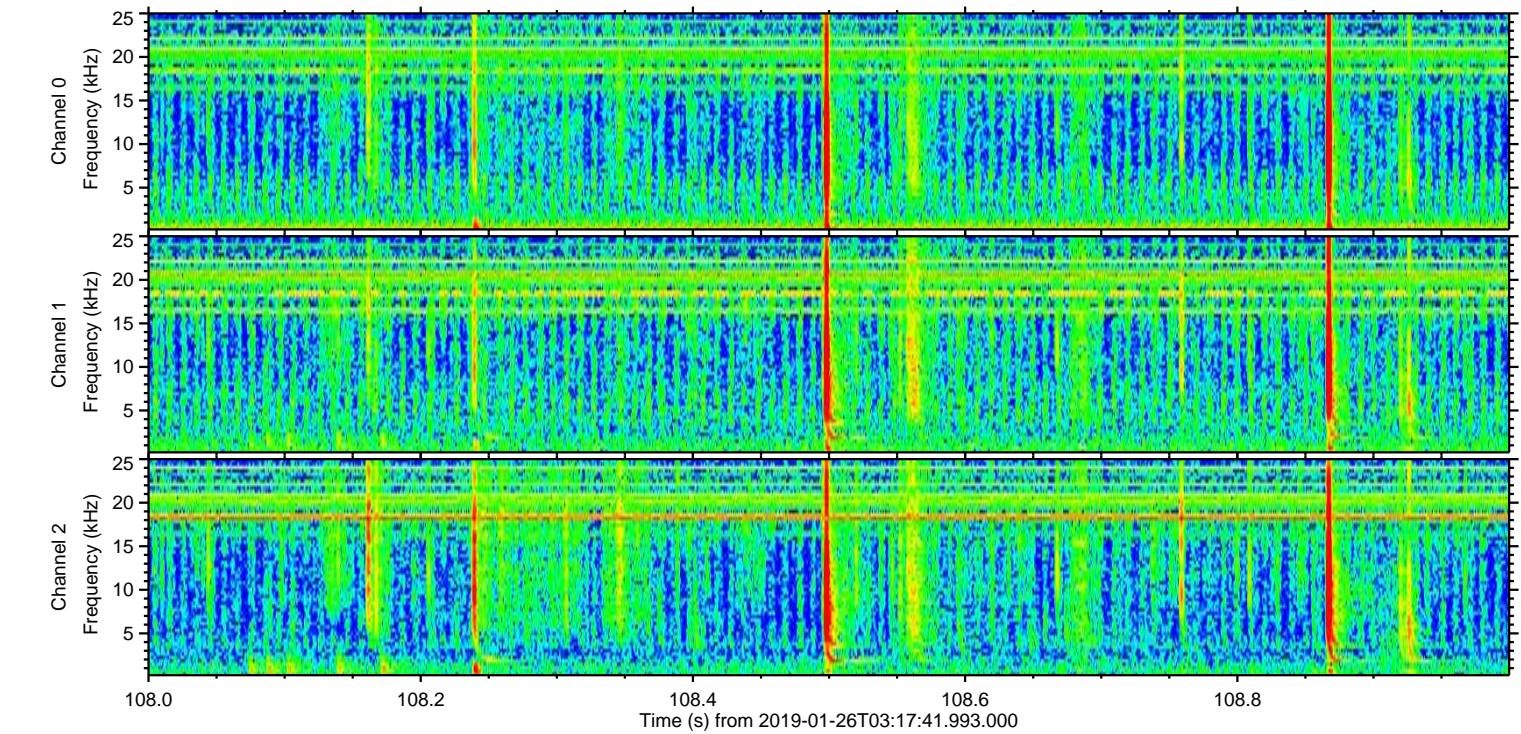
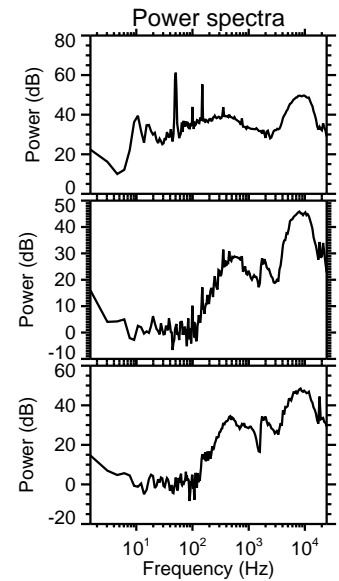
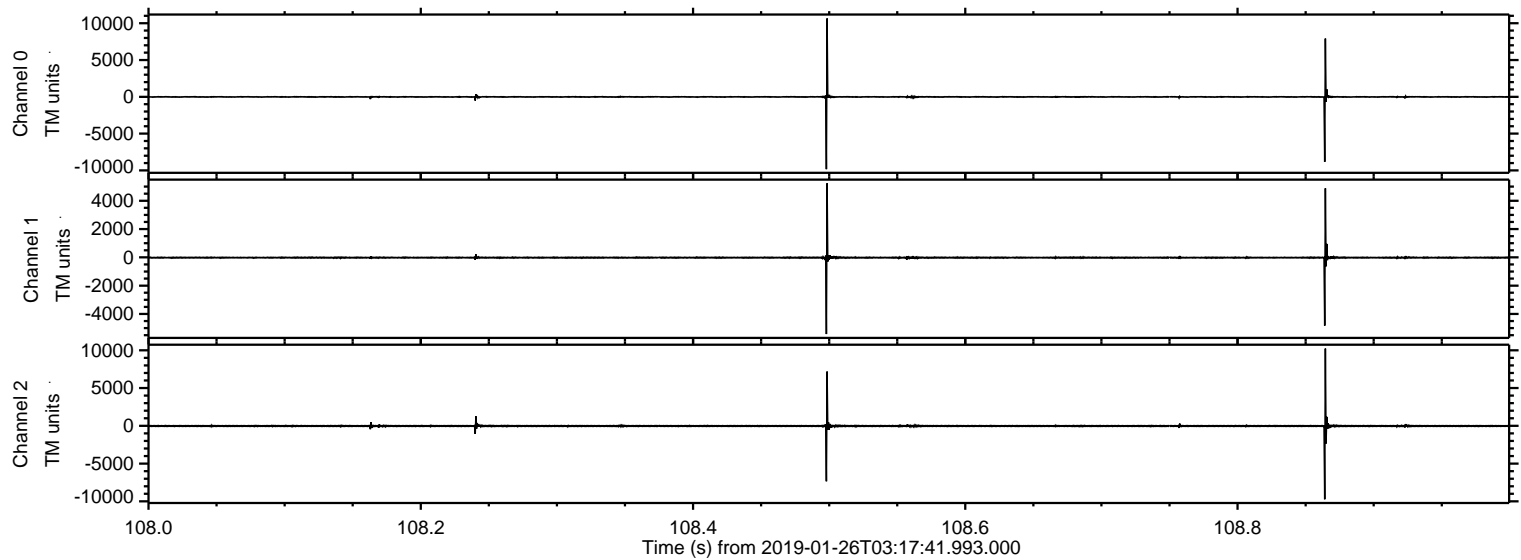
ELMAVAN 3D WAVEFORMS (Measured data sampled at 50 kHz) 51000 packets of 144 samples from 2019-01-26T03:17:41.993.000.

Processed Sat Jan 26 04:25:10 2019 by ELM ver.2012-10-06 from 001__elm20190126_031740__dat00.bin

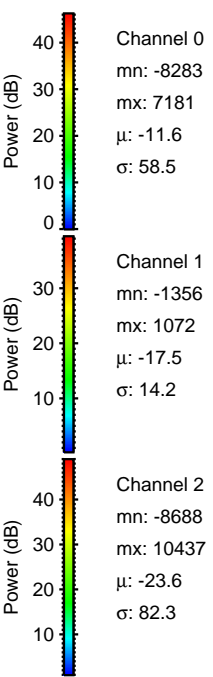
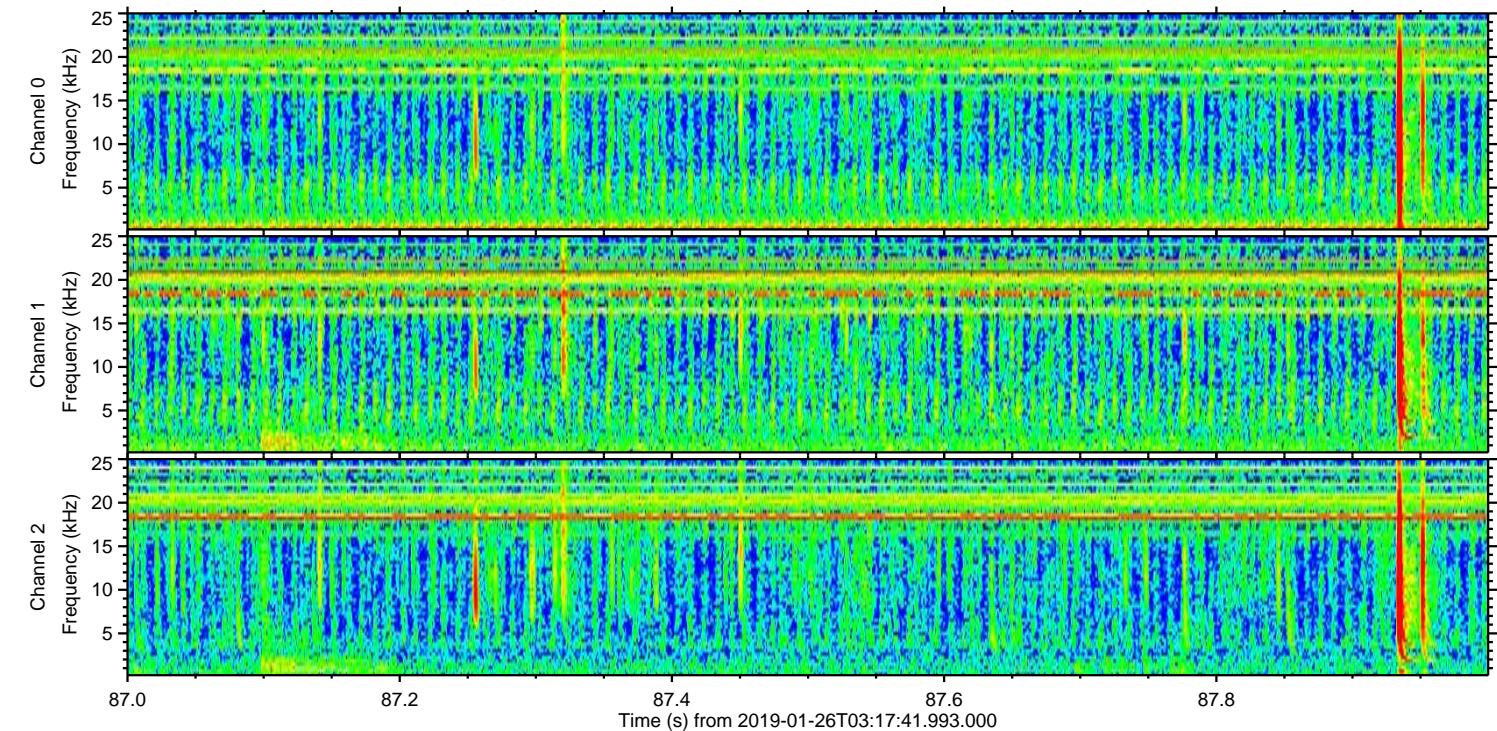
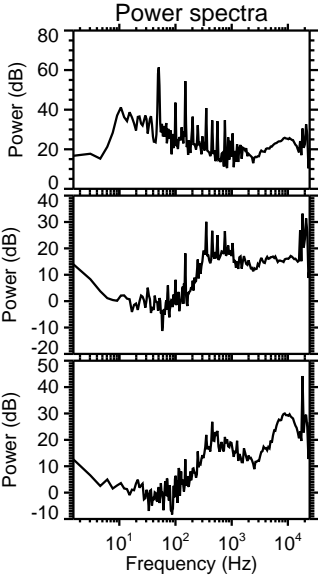
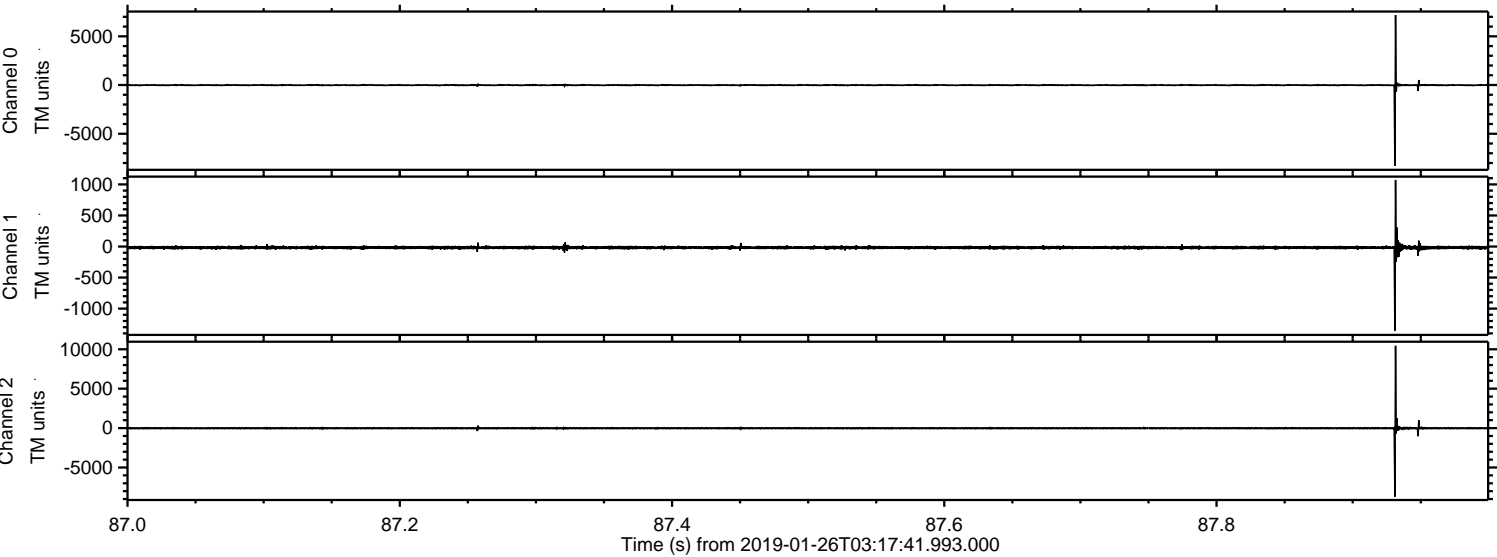


ELMAVAN 3D WAVEFORMS (Measured data sampled at 50 kHz) 51000 packets of 144 samples from 2019-01-26T03:17:41.993.000. Part 109/147

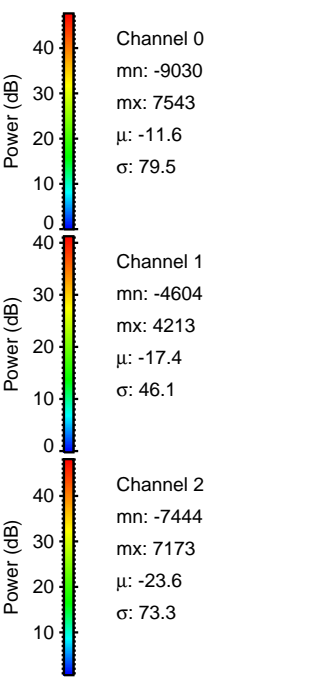
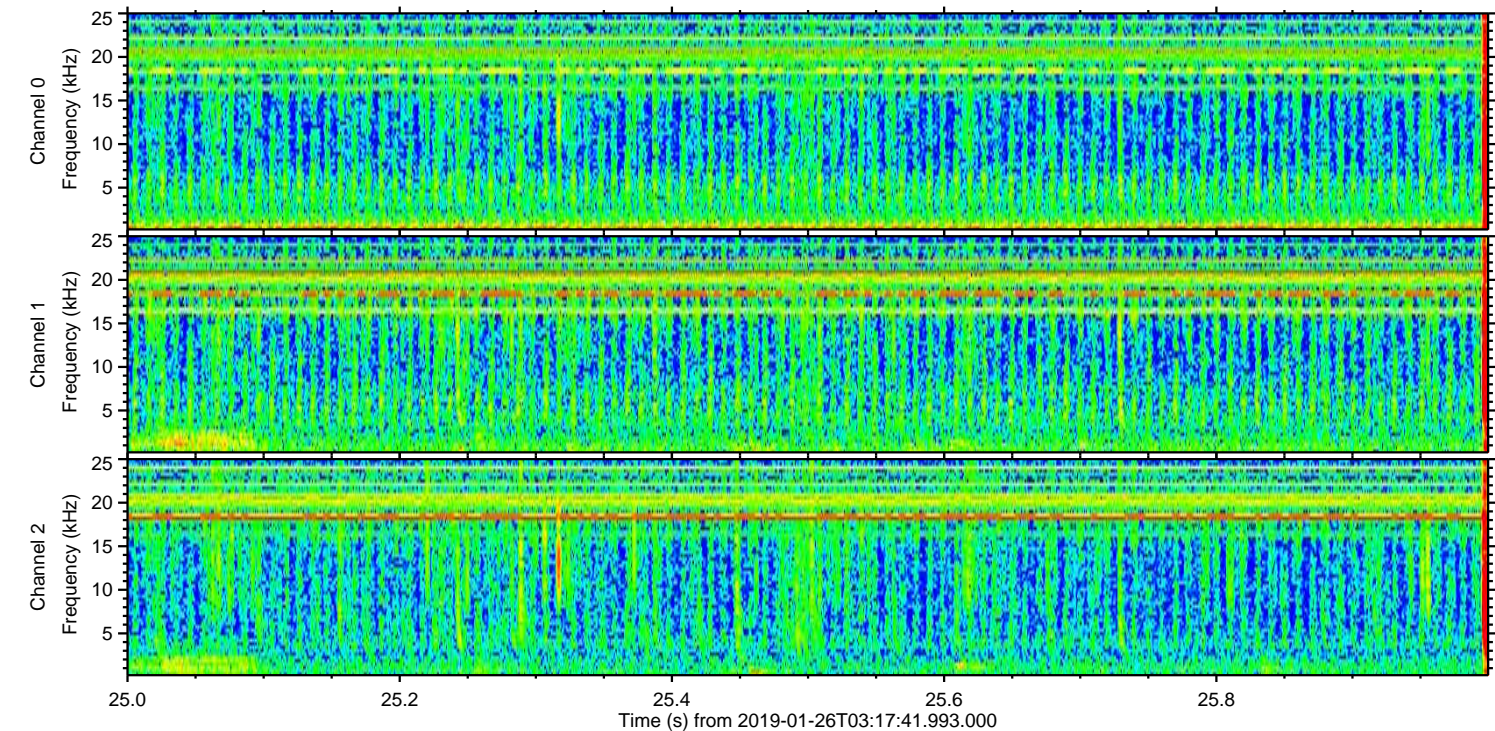
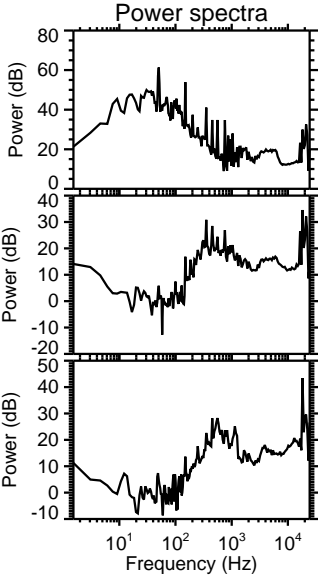
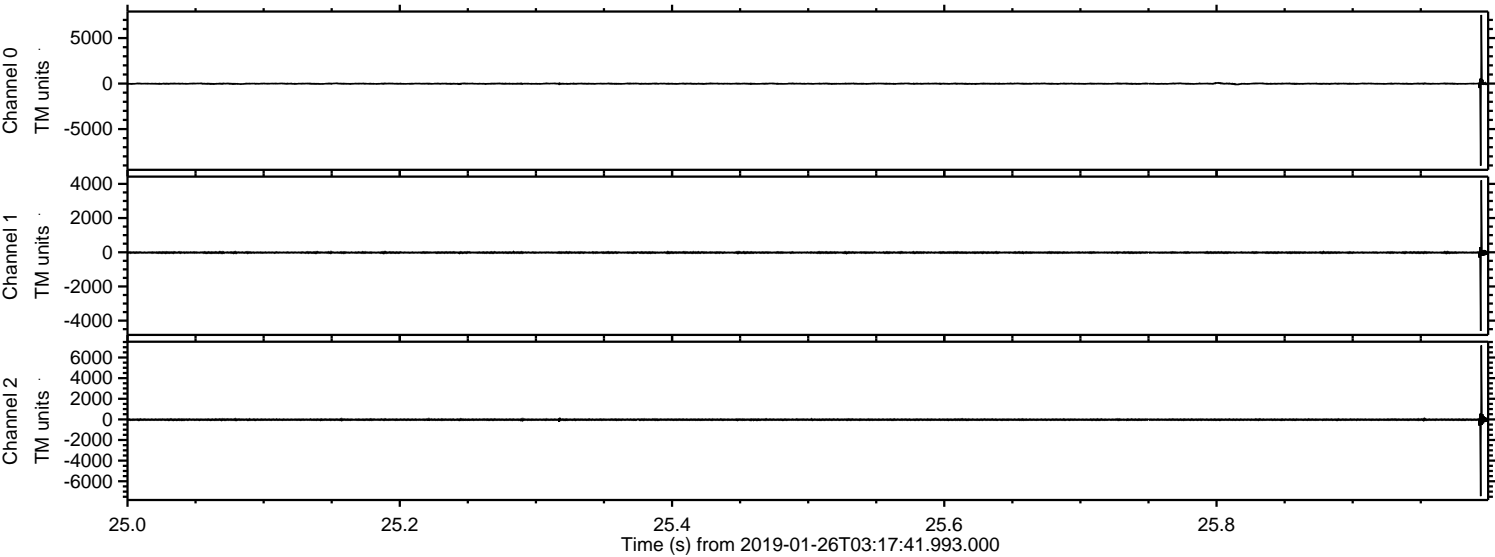
Processed Sat Jan 26 04:25:19 2019 by ELM ver.2012-10-06 from 001__elm20190126_031740__dat00.bin



Processed Sat Jan 26 04:25:20 2019 by ELM ver.2012-10-06 from 001__elm20190126_031740__dat00.bin

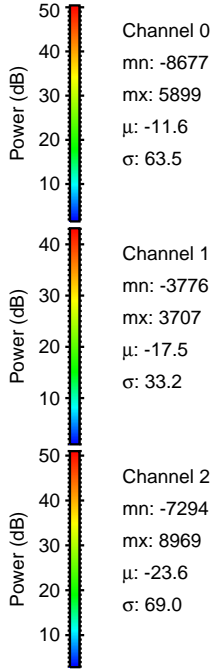
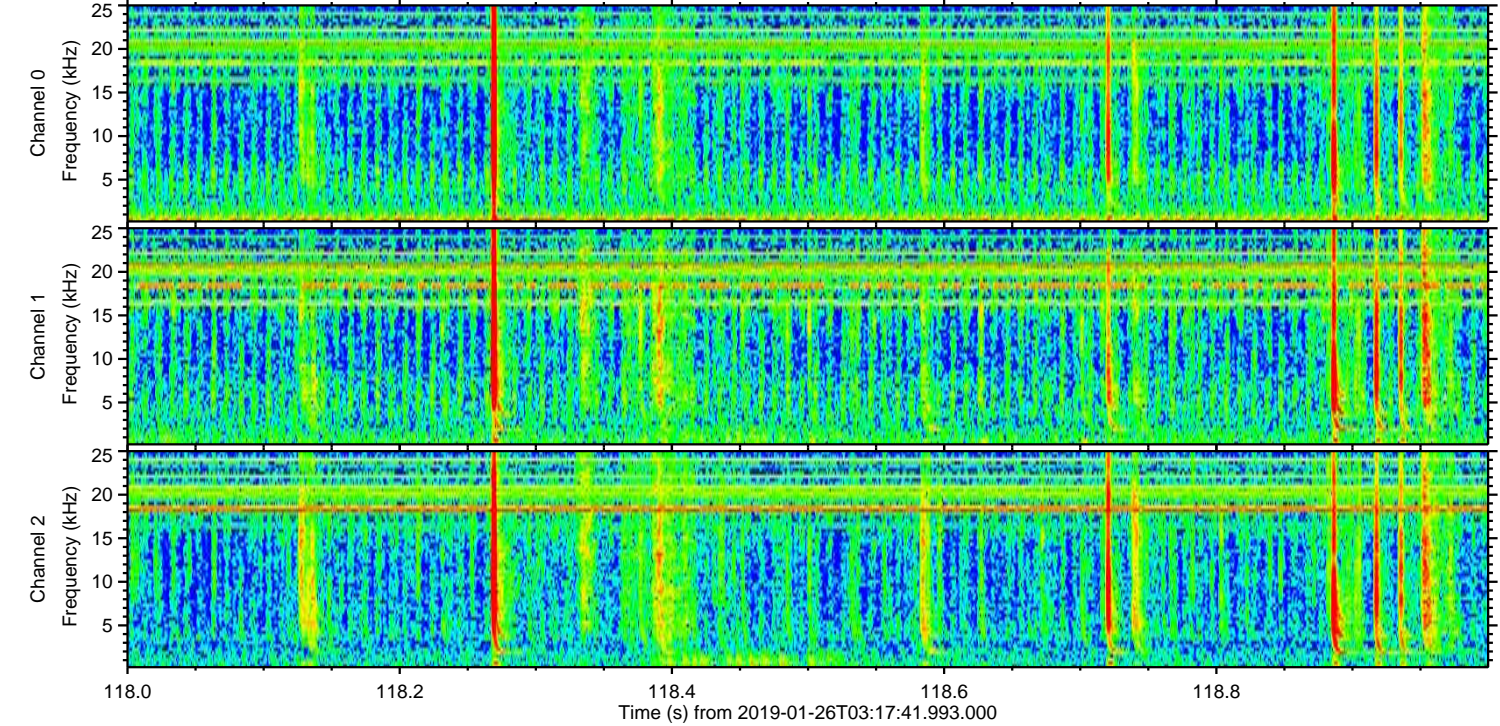
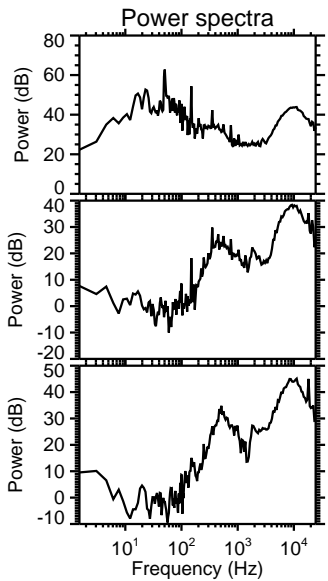
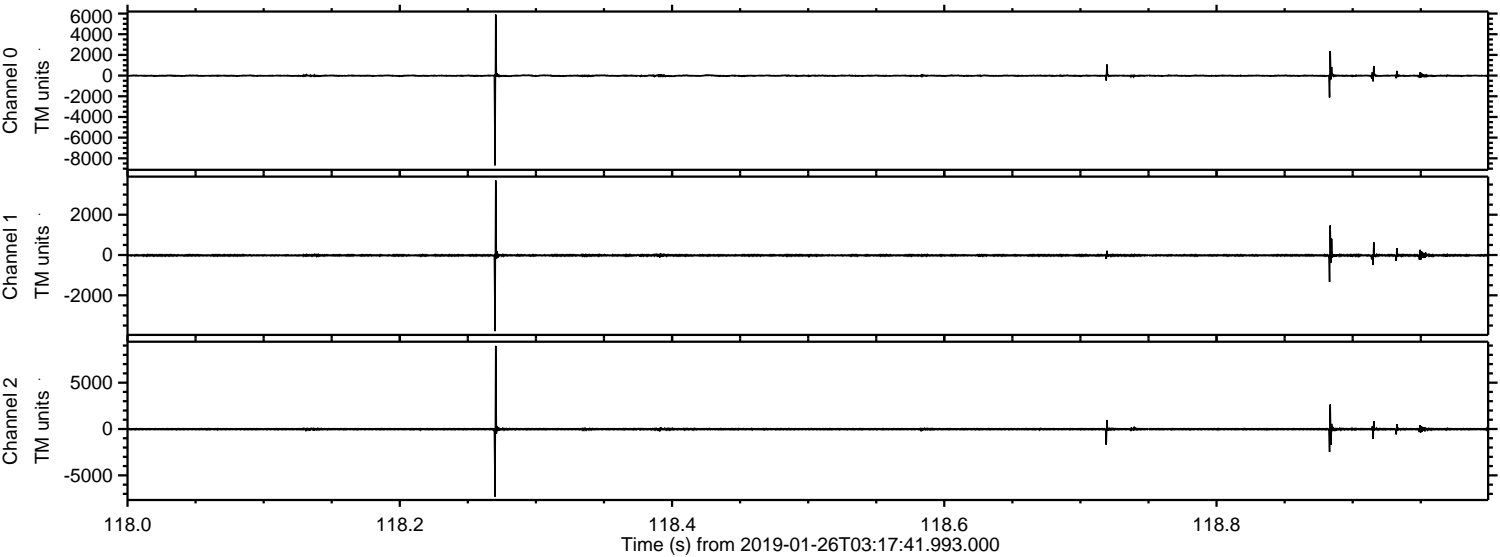


Processed Sat Jan 26 04:25:20 2019 by ELM ver.2012-10-06 from 001__elm20190126_031740__dat00.bin

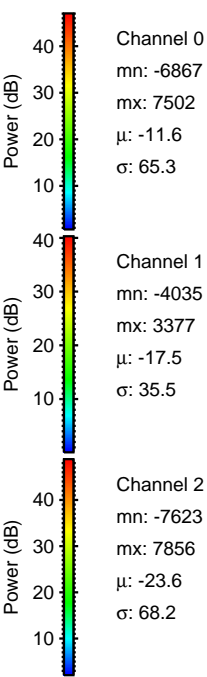
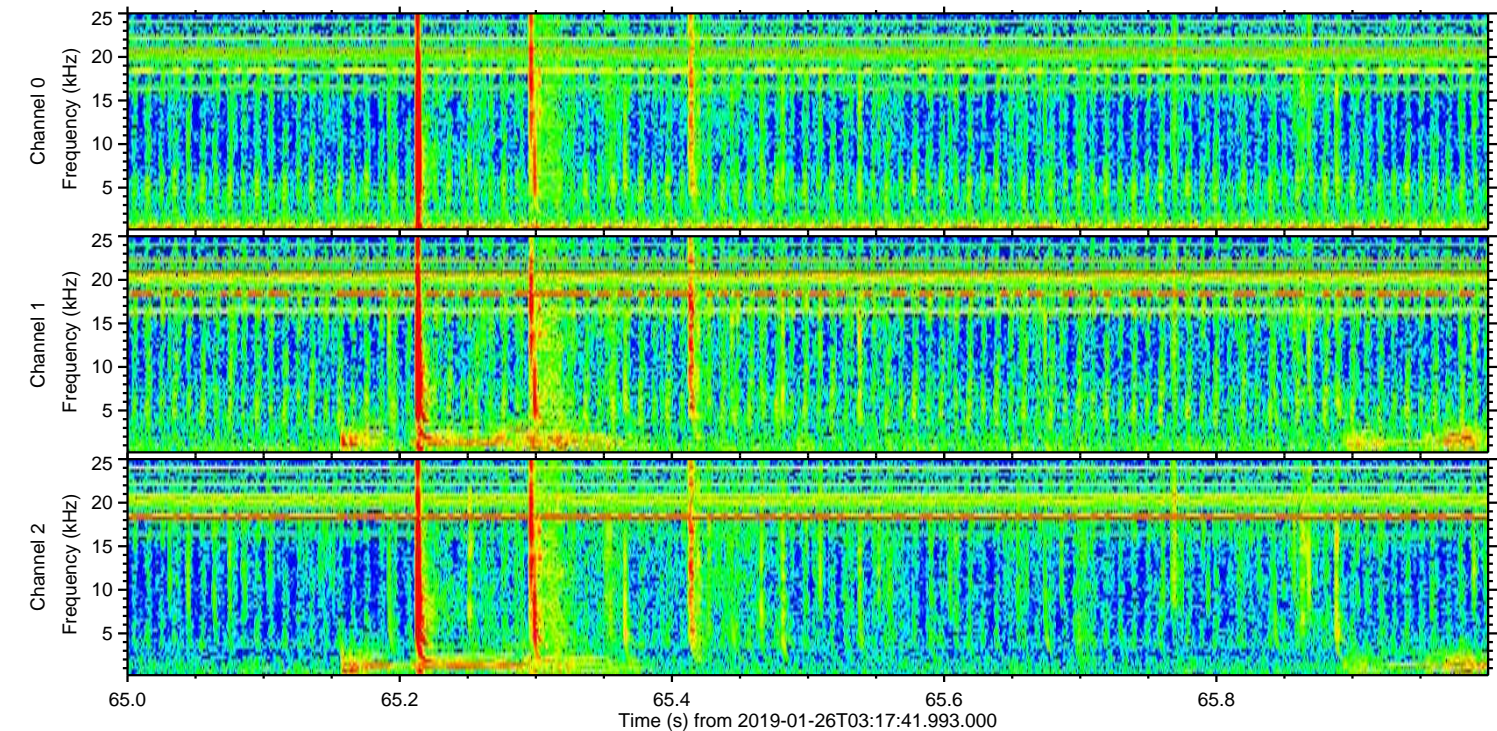
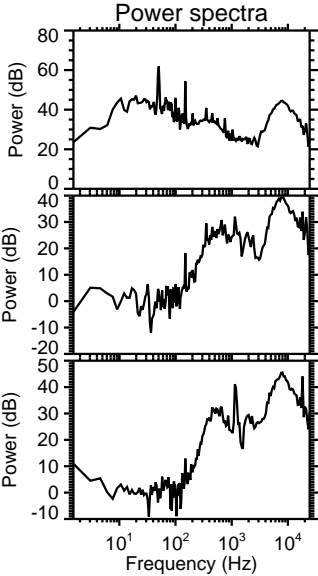
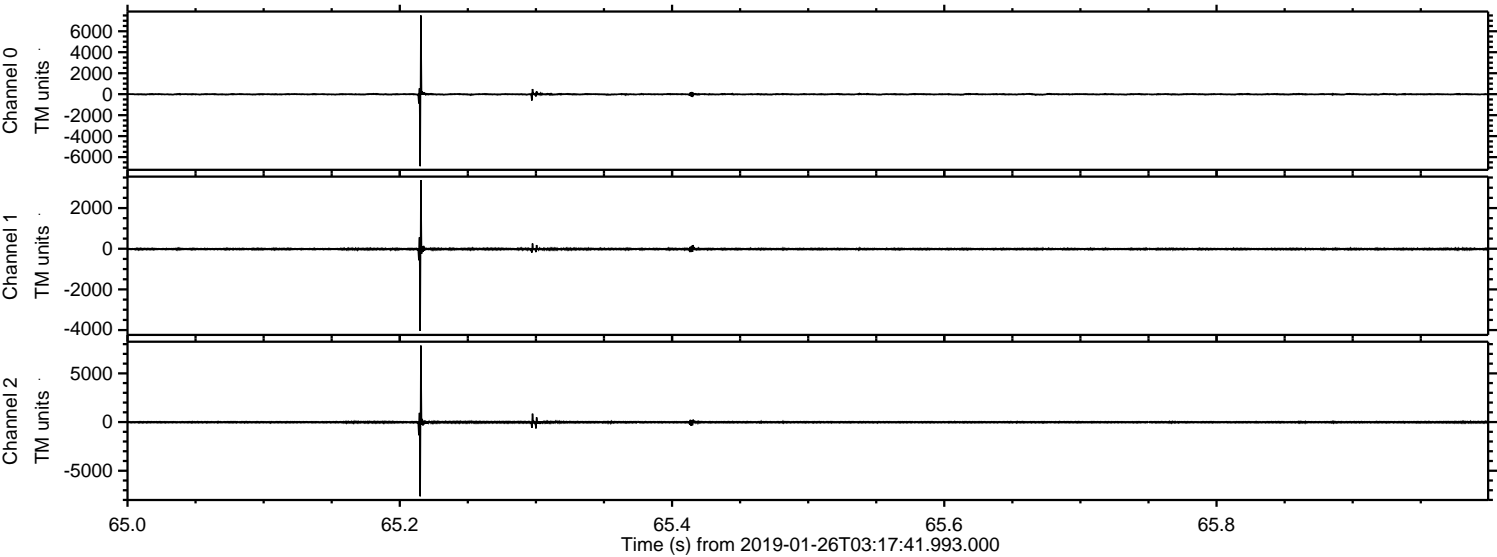


ELMAVAN 3D WAVEFORMS (Measured data sampled at 50 kHz) 51000 packets of 144 samples from 2019-01-26T03:17:41.993.000. Part 119/147

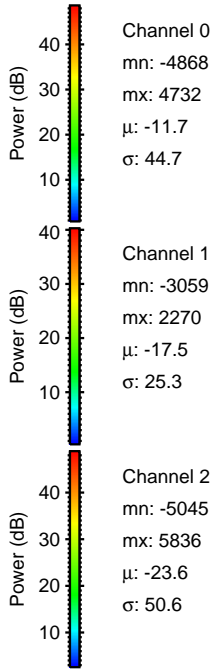
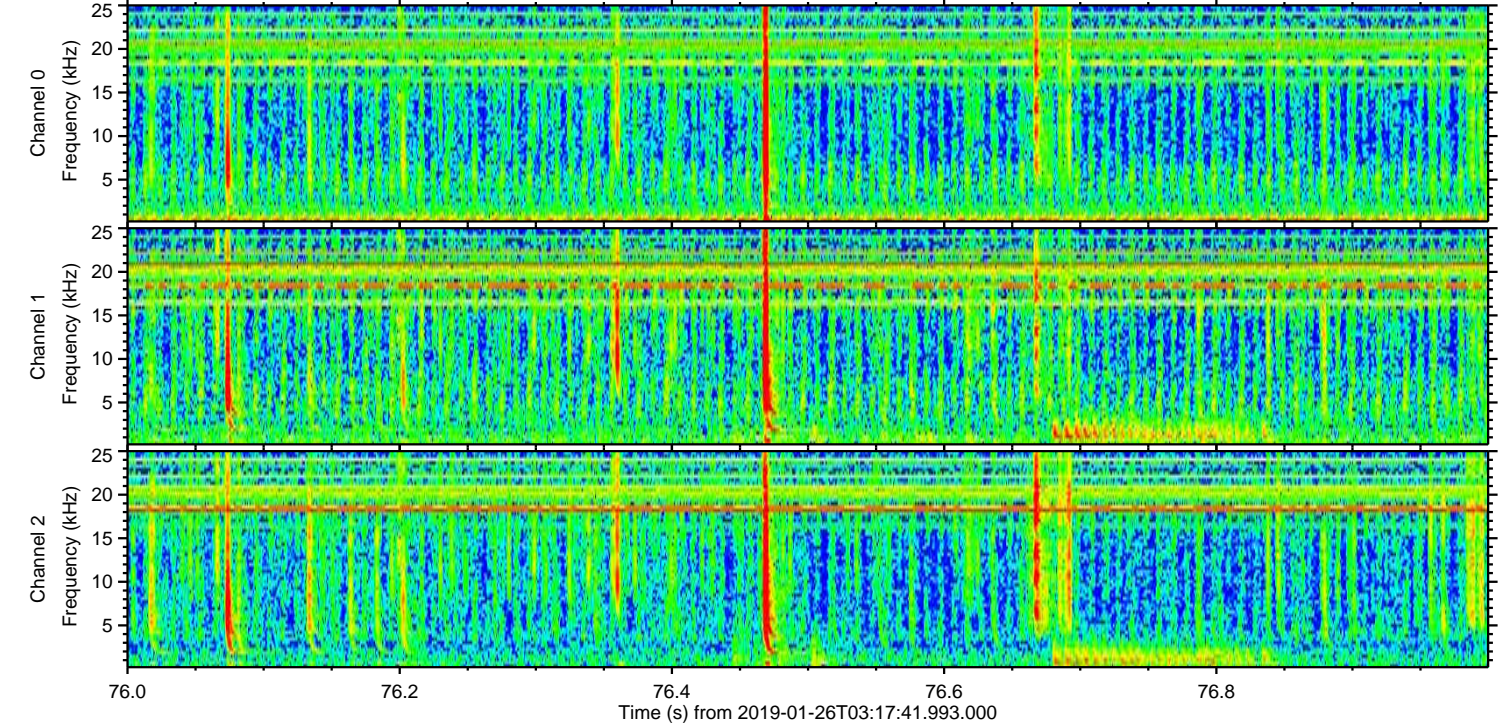
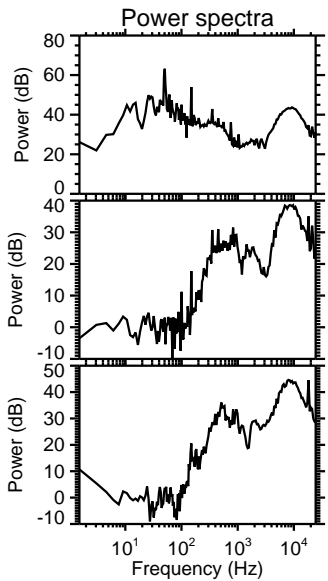
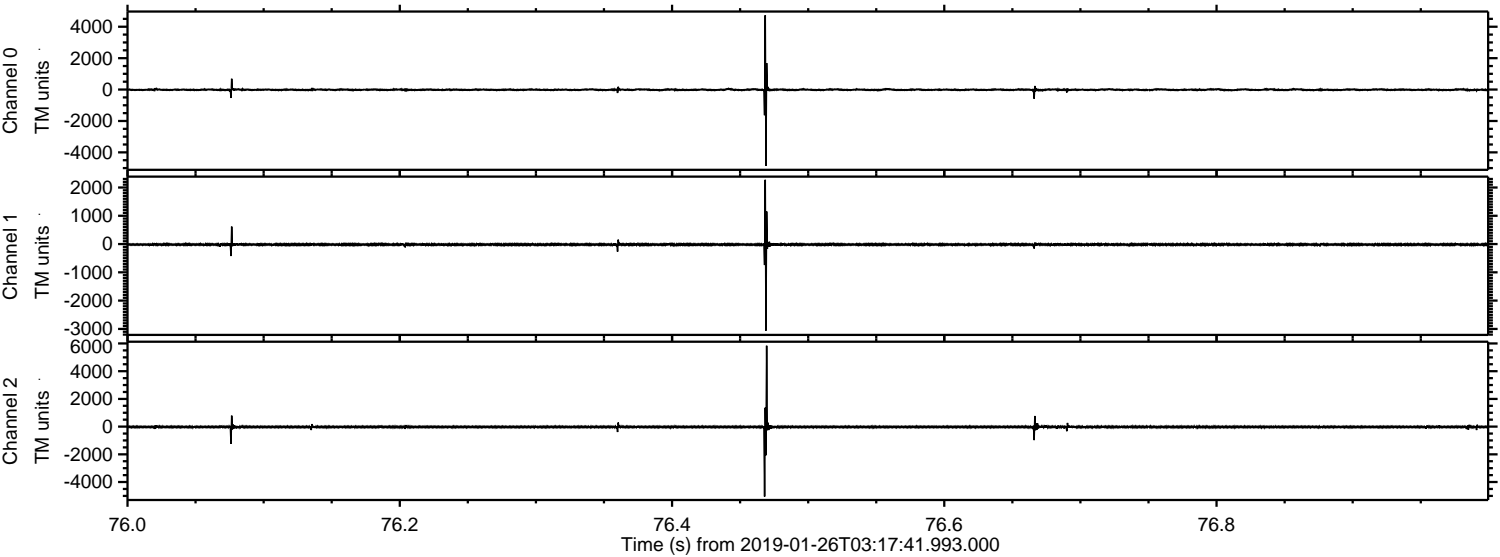
Processed Sat Jan 26 04:25:21 2019 by ELM ver.2012-10-06 from 001__elm20190126_031740__dat00.bin



Processed Sat Jan 26 04:25:22 2019 by ELM ver.2012-10-06 from 001__elm20190126_031740__dat00.bin

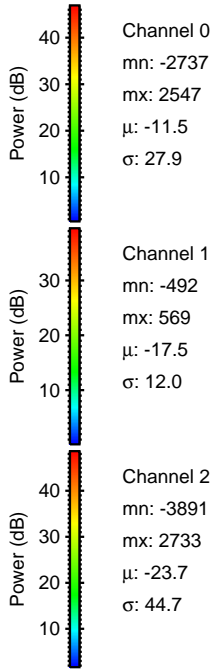
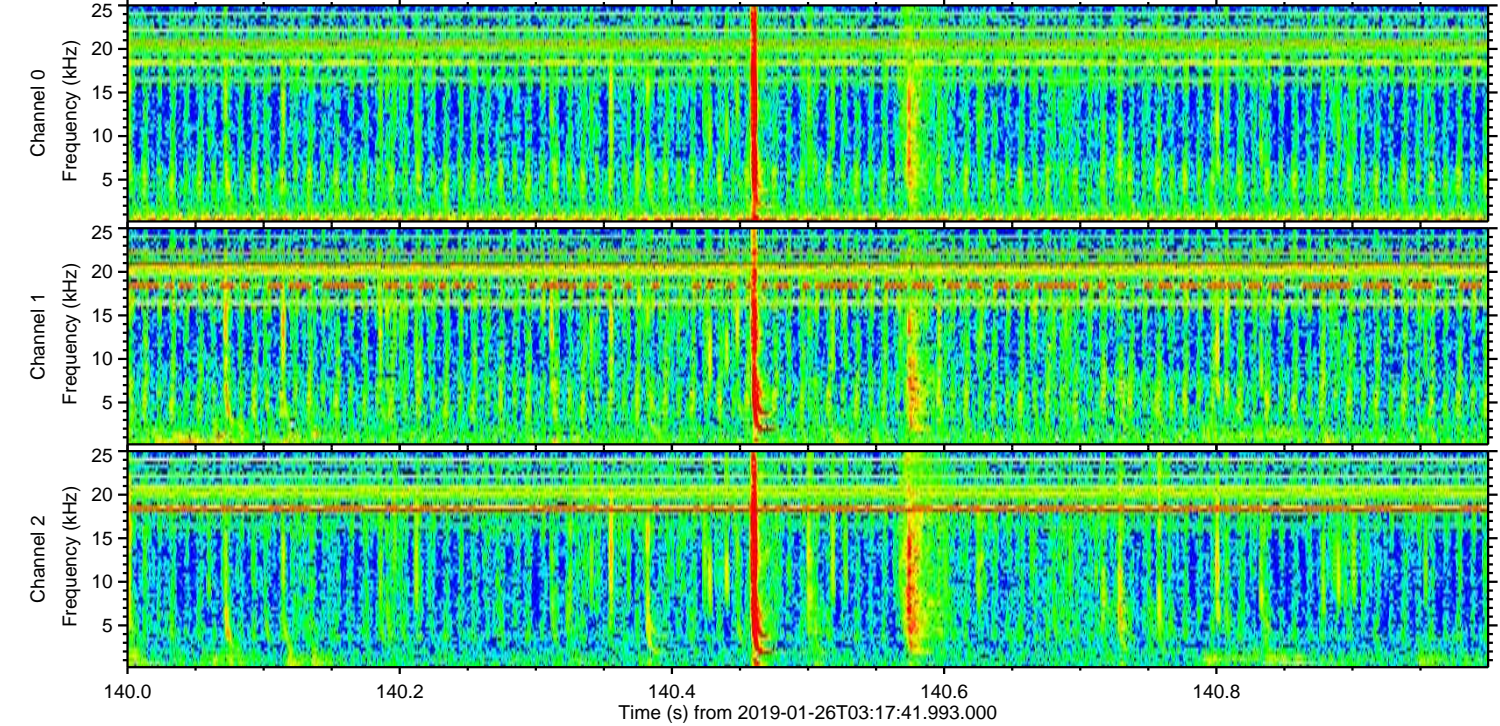
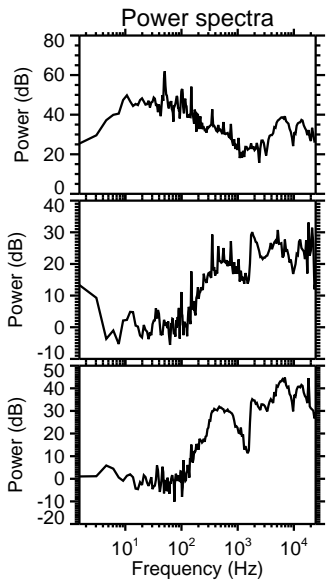
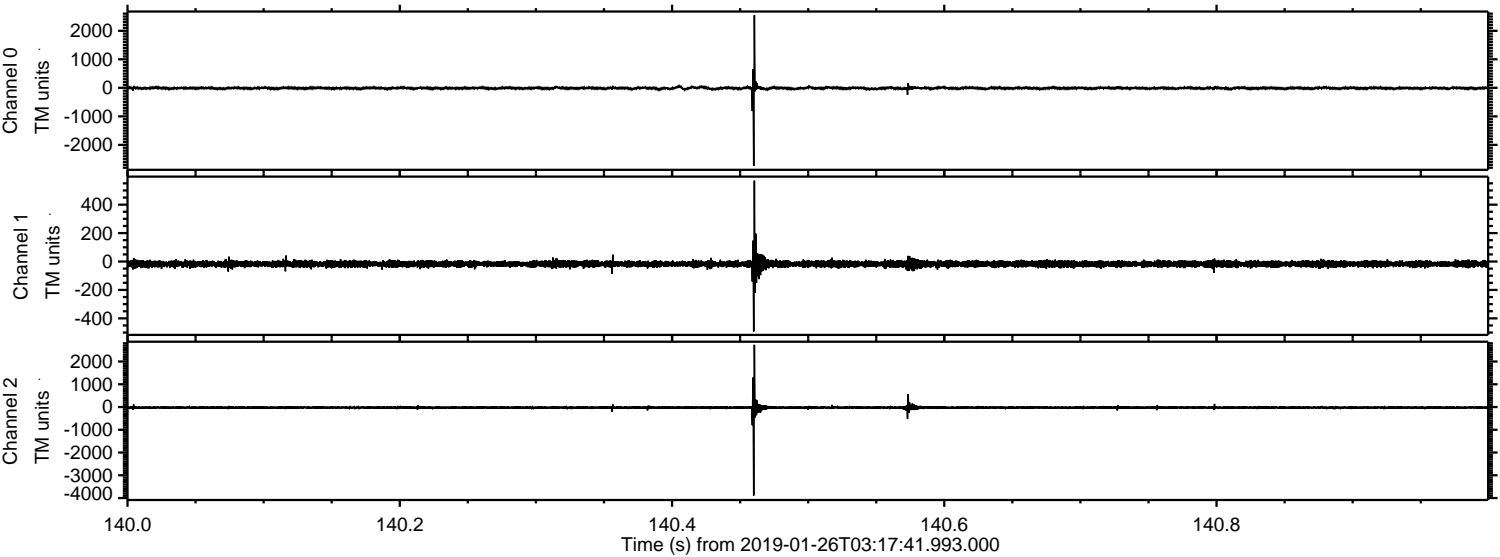


Processed Sat Jan 26 04:25:22 2019 by ELM ver.2012-10-06 from 001__elm20190126_031740__dat00.bin



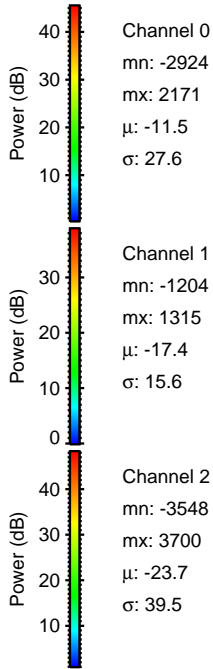
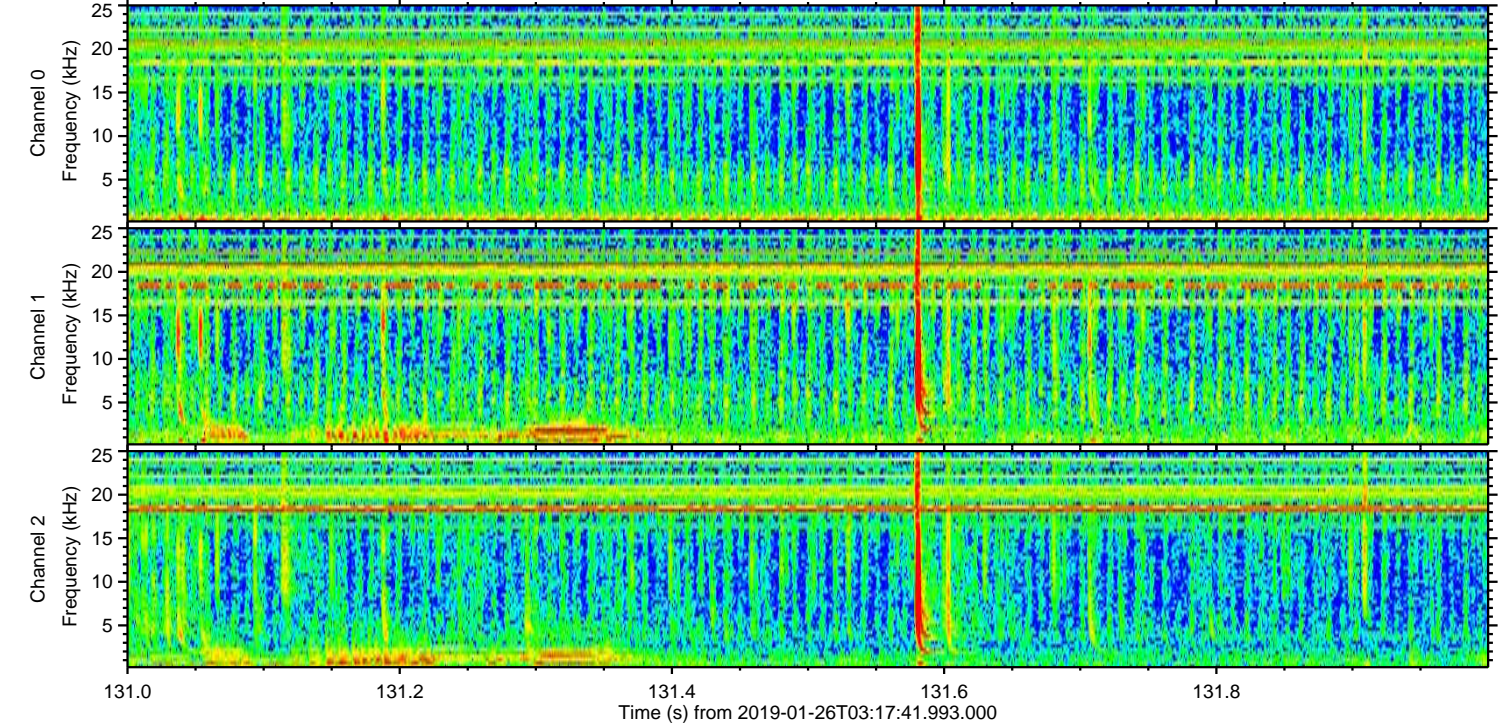
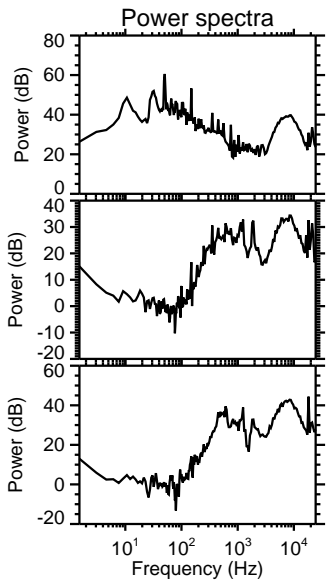
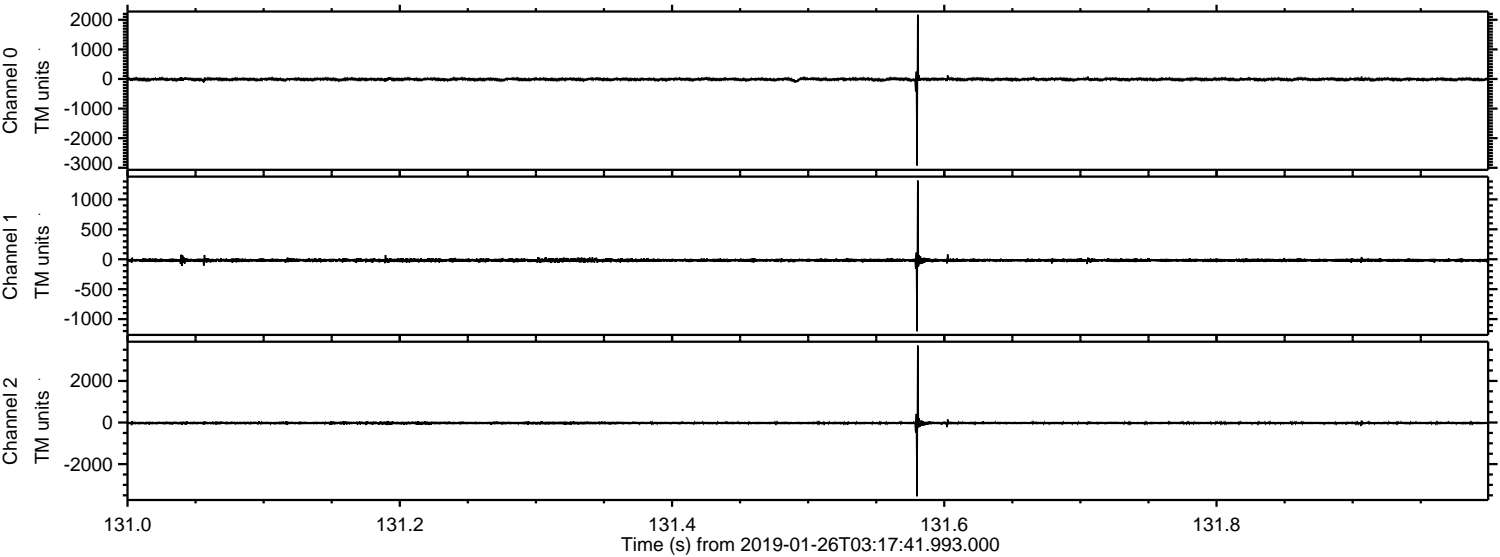
ELMAVAN 3D WAVEFORMS (Measured data sampled at 50 kHz) 51000 packets of 144 samples from 2019-01-26T03:17:41.993.000. Part 141/147

Processed Sat Jan 26 04:25:23 2019 by ELM ver.2012-10-06 from 001__elm20190126_031740__dat00.bin



ELMAVAN 3D WAVEFORMS (Measured data sampled at 50 kHz) 51000 packets of 144 samples from 2019-01-26T03:17:41.993.000. Part 132/147

Processed Sat Jan 26 04:25:24 2019 by ELM ver.2012-10-06 from 001__elm20190126_031740__dat00.bin

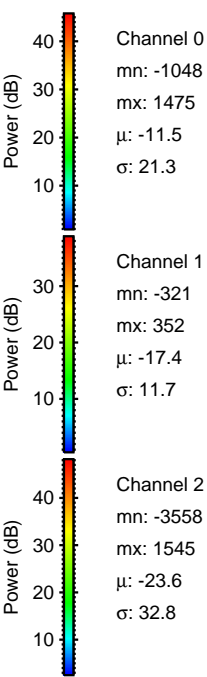
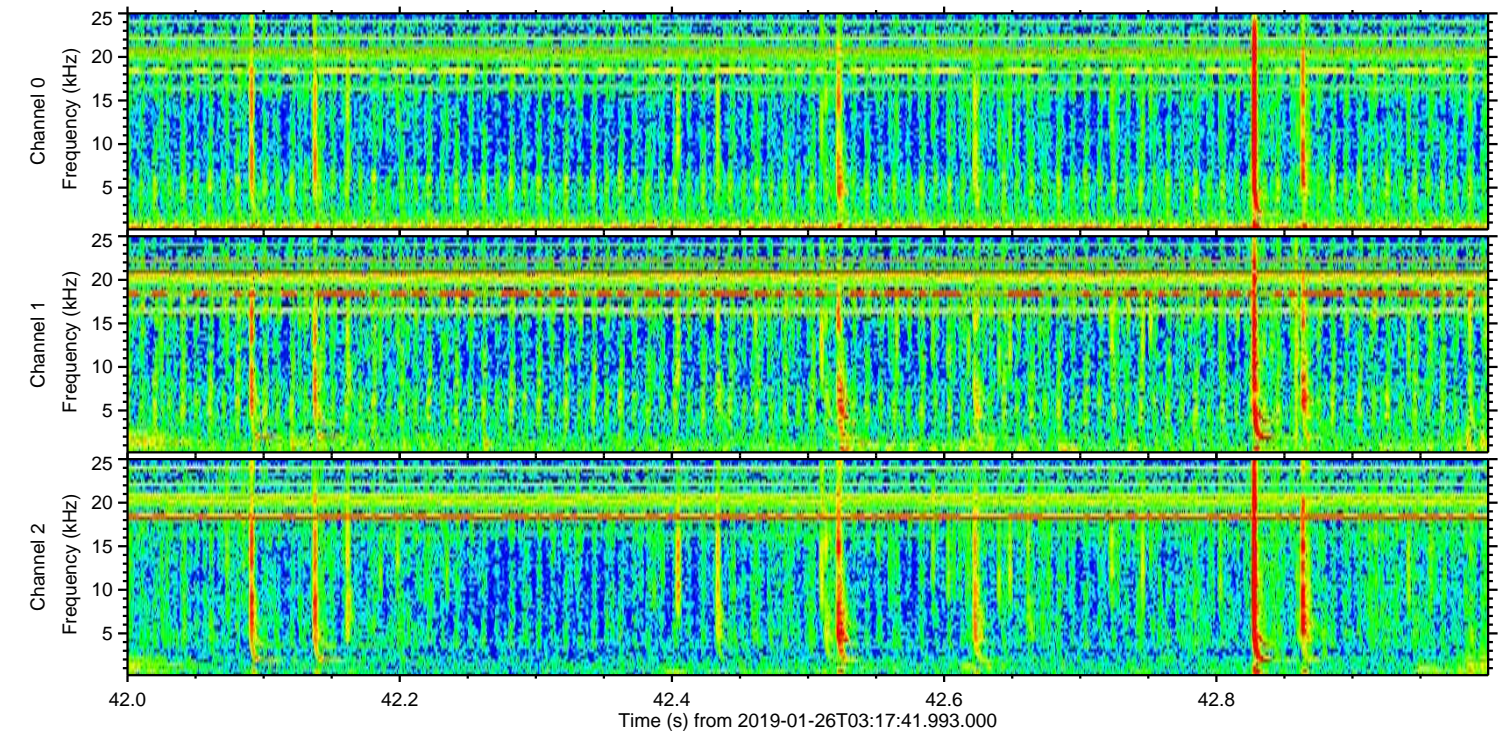
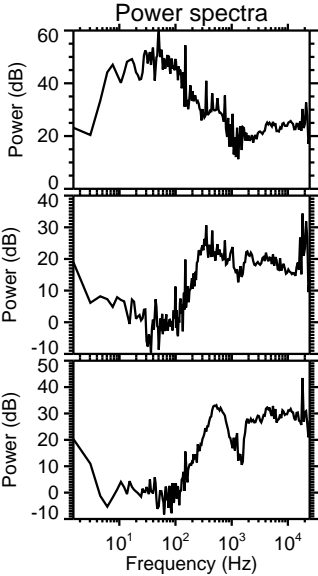
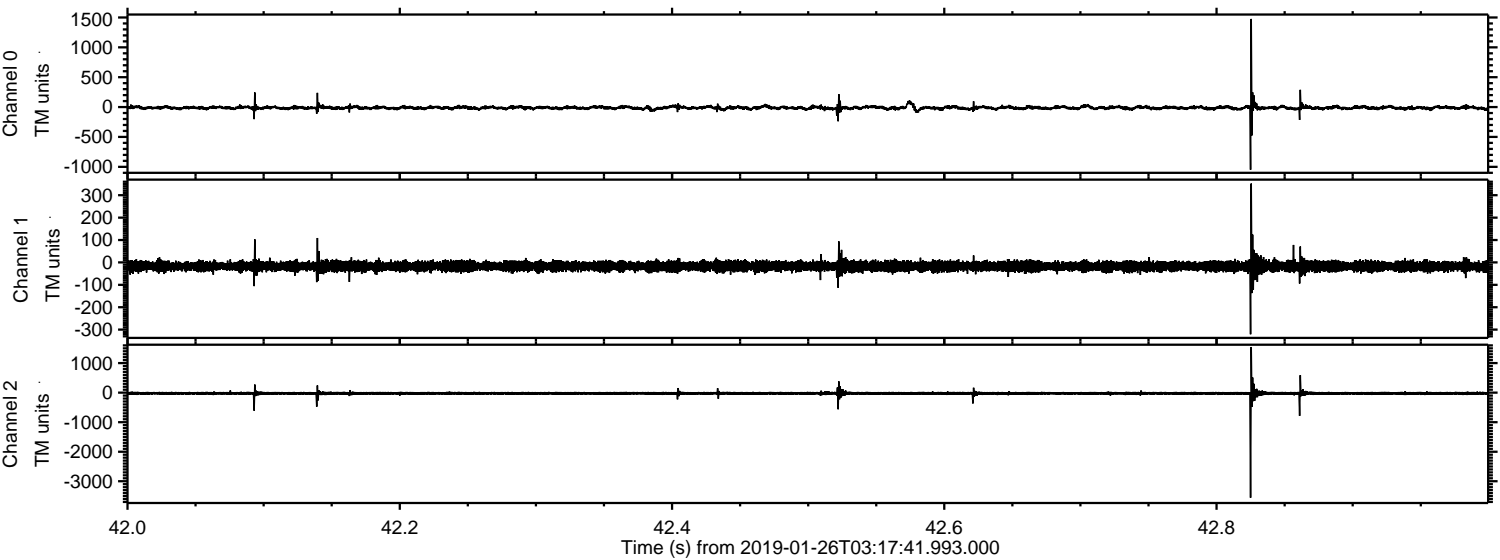


Channel 0
mn: -2924
mx: 2171
 μ : -11.5
 σ : 27.6

Channel 1
mn: -1204
mx: 1315
 μ : -17.4
 σ : 15.6

Channel 2
mn: -3548
mx: 3700
 μ : -23.7
 σ : 39.5

Processed Sat Jan 26 04:25:24 2019 by ELM ver.2012-10-06 from 001__elm20190126_031740__dat00.bin



Processed Sat Jan 26 04:25:25 2019 by ELM ver.2012-10-06 from 001__elm20190126_031740__dat00.bin

