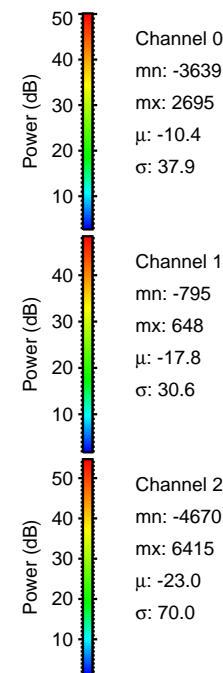
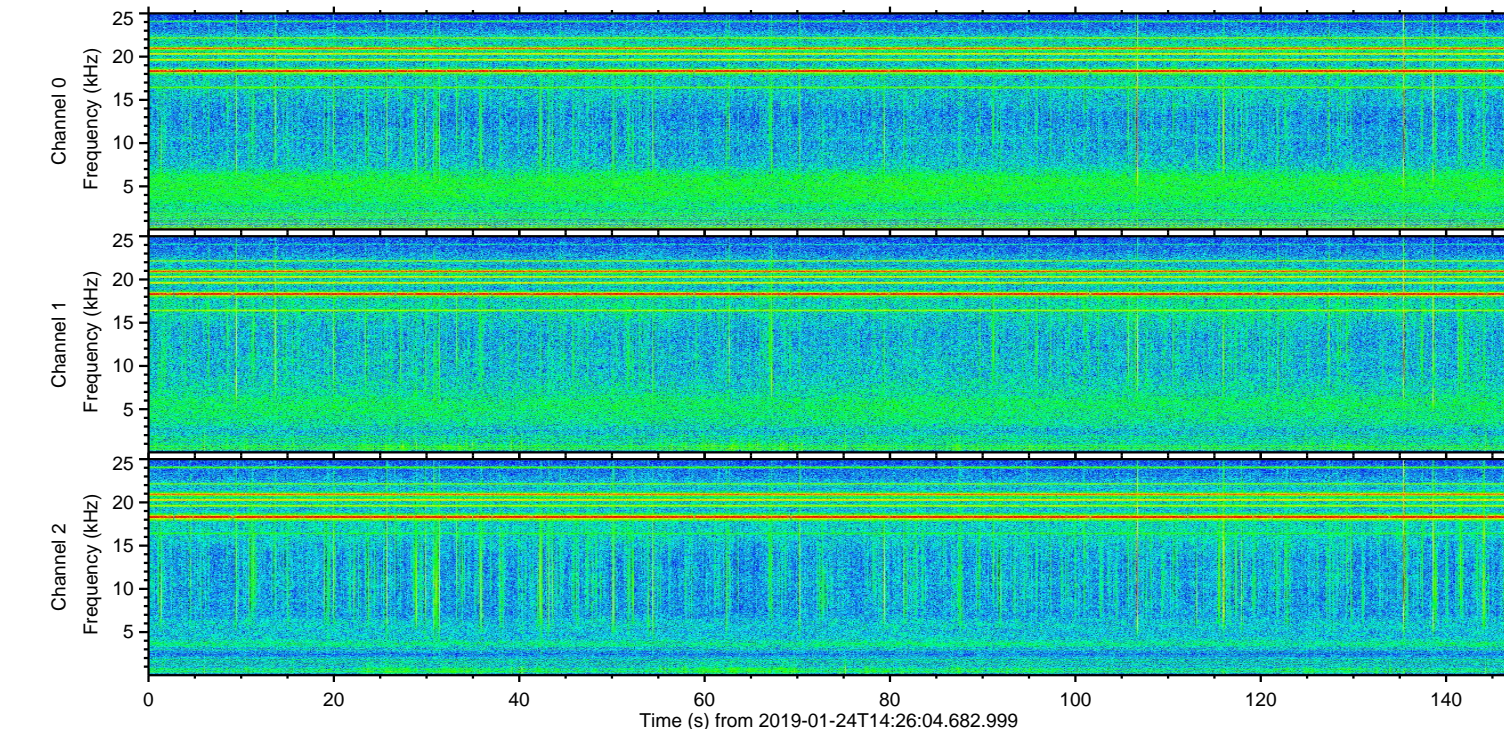
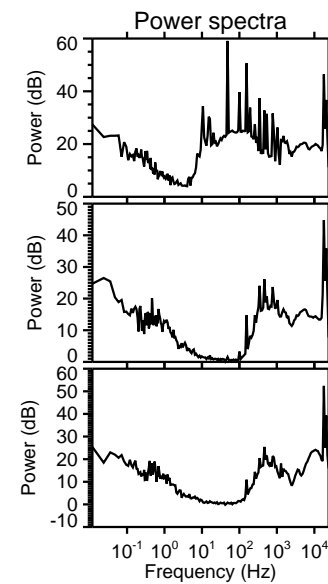
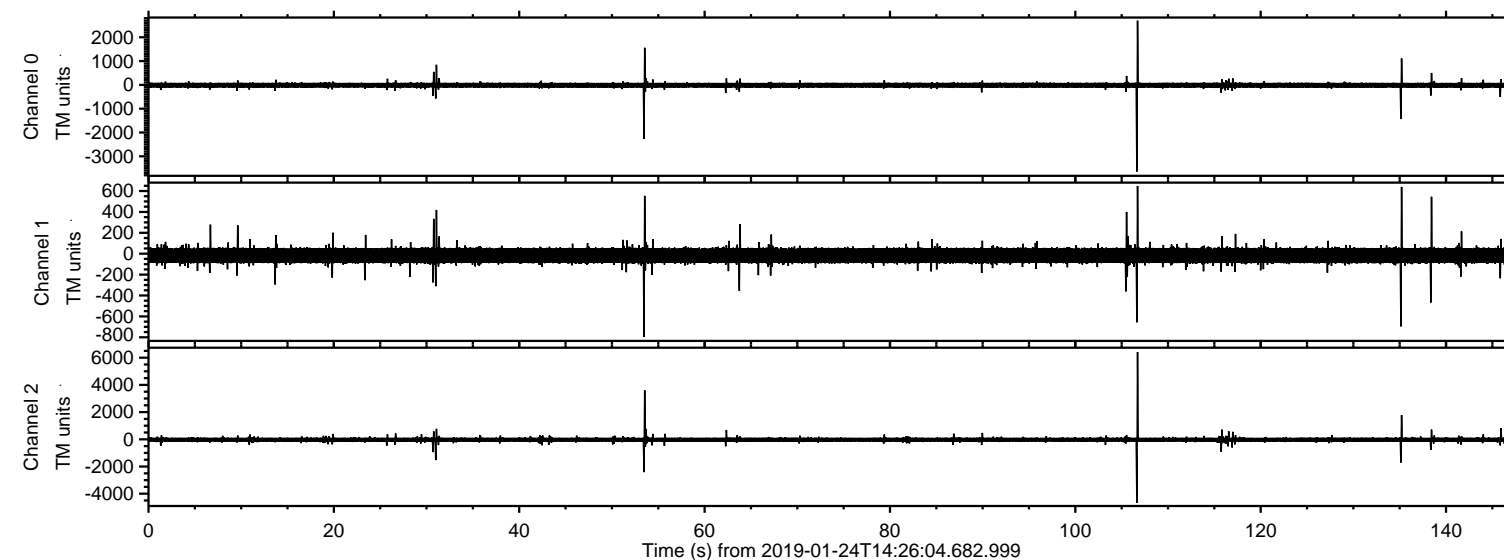


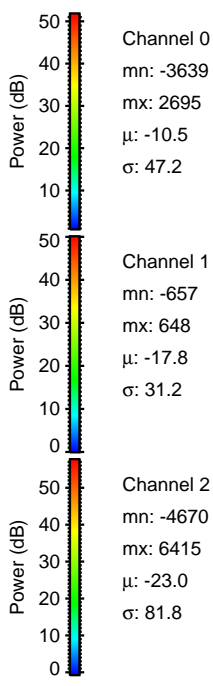
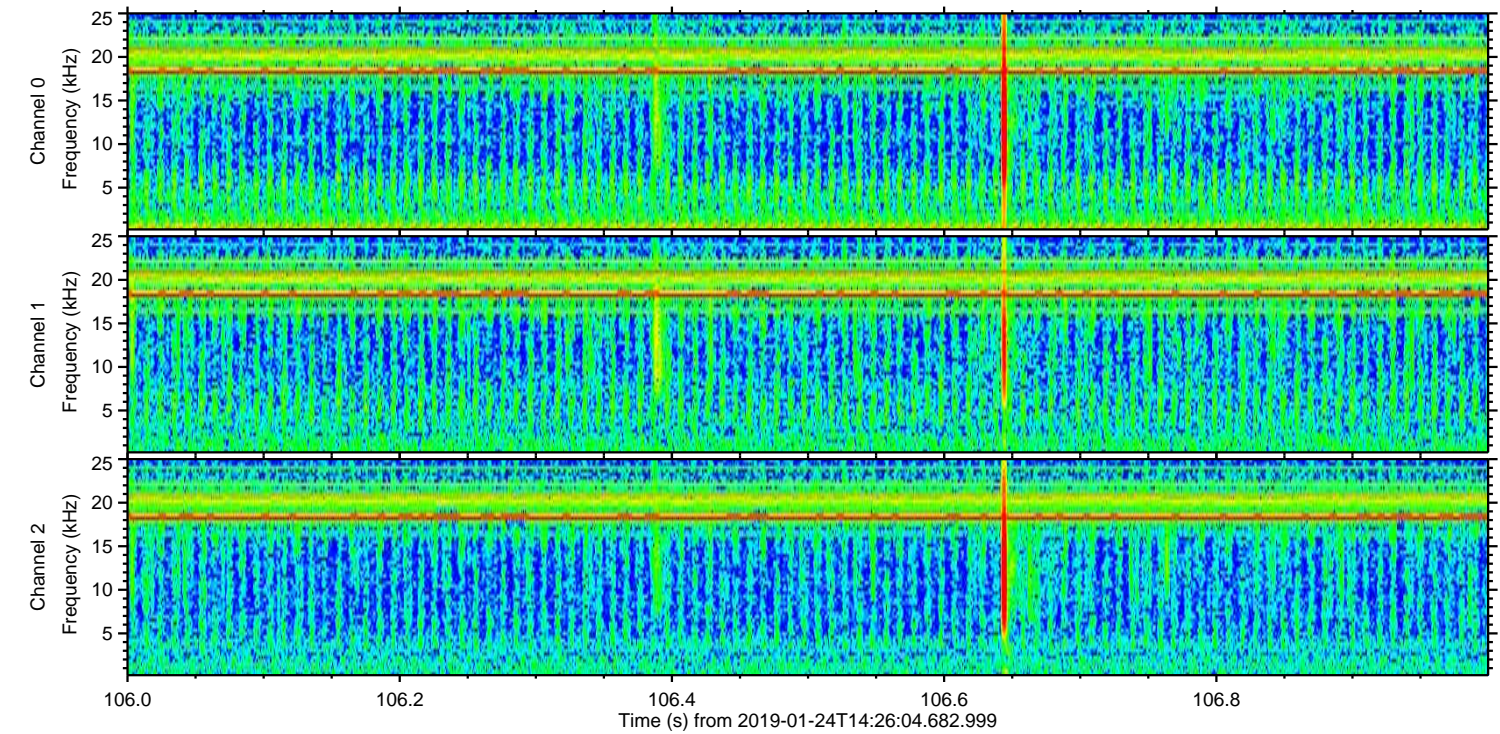
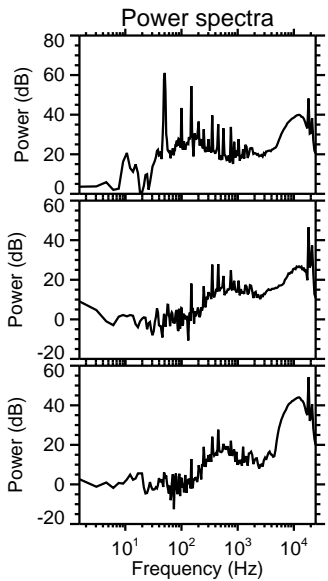
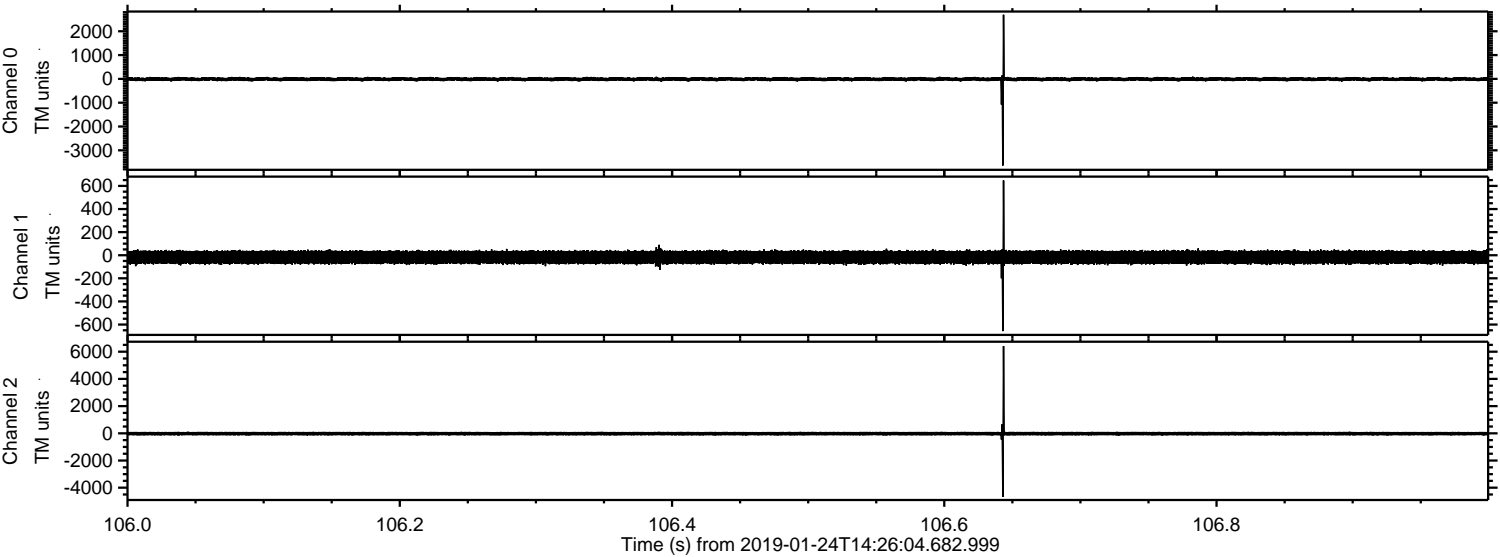
ELMAVAN 3D WAVEFORMS (Measured data sampled at 50 kHz) 51000 packets of 144 samples from 2019-01-24T14:26:04.682.999.

Processed Thu Jan 24 15:33:59 2019 by ELM ver.2012-10-06 from 001__elm20190124_142603__dat00.bin

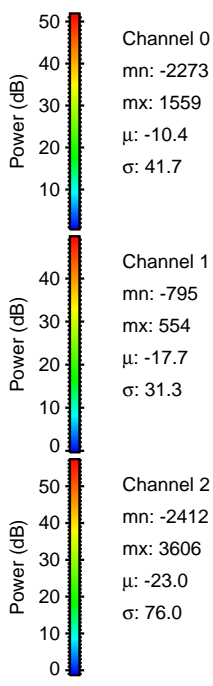
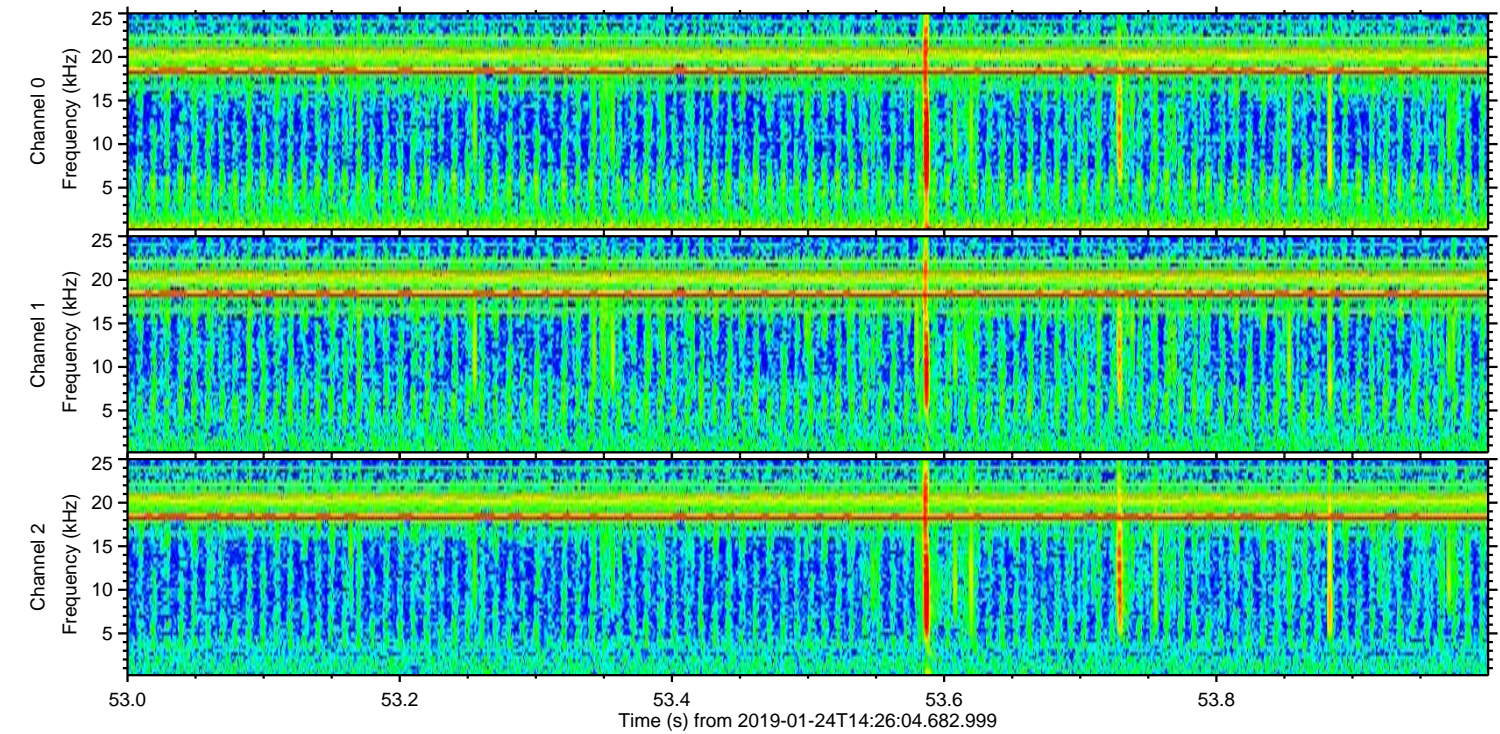
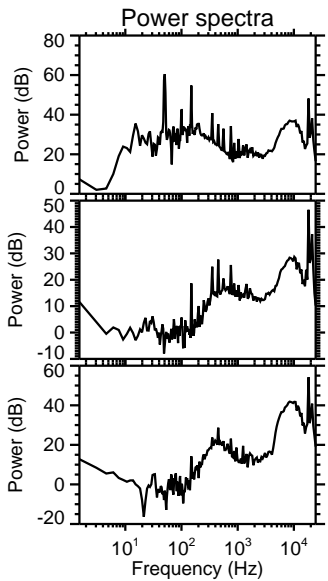
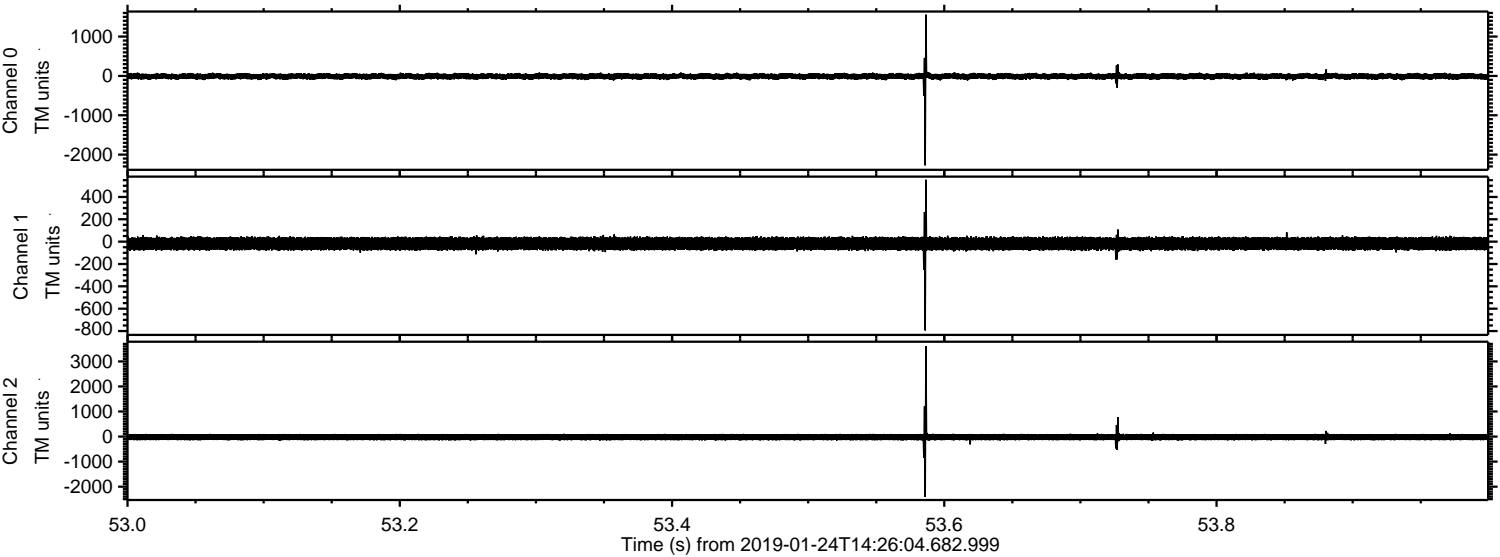


ELMAVAN 3D WAVEFORMS (Measured data sampled at 50 kHz) 51000 packets of 144 samples from 2019-01-24T14:26:04.682.999. Part 107/147

Processed Thu Jan 24 15:34:05 2019 by ELM ver.2012-10-06 from 001__elm20190124_142603__dat00.bin

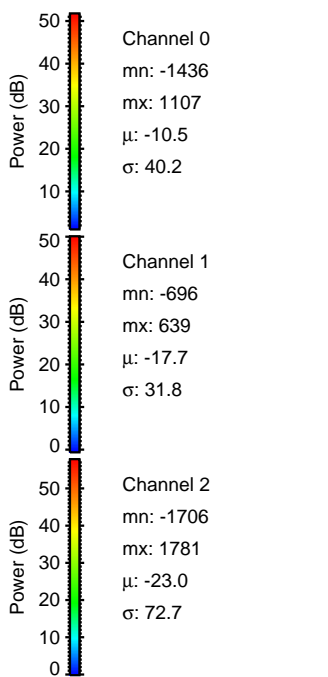
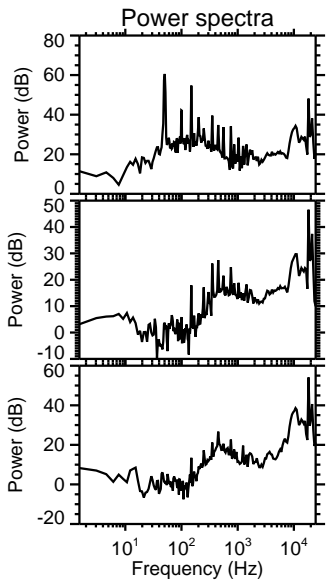
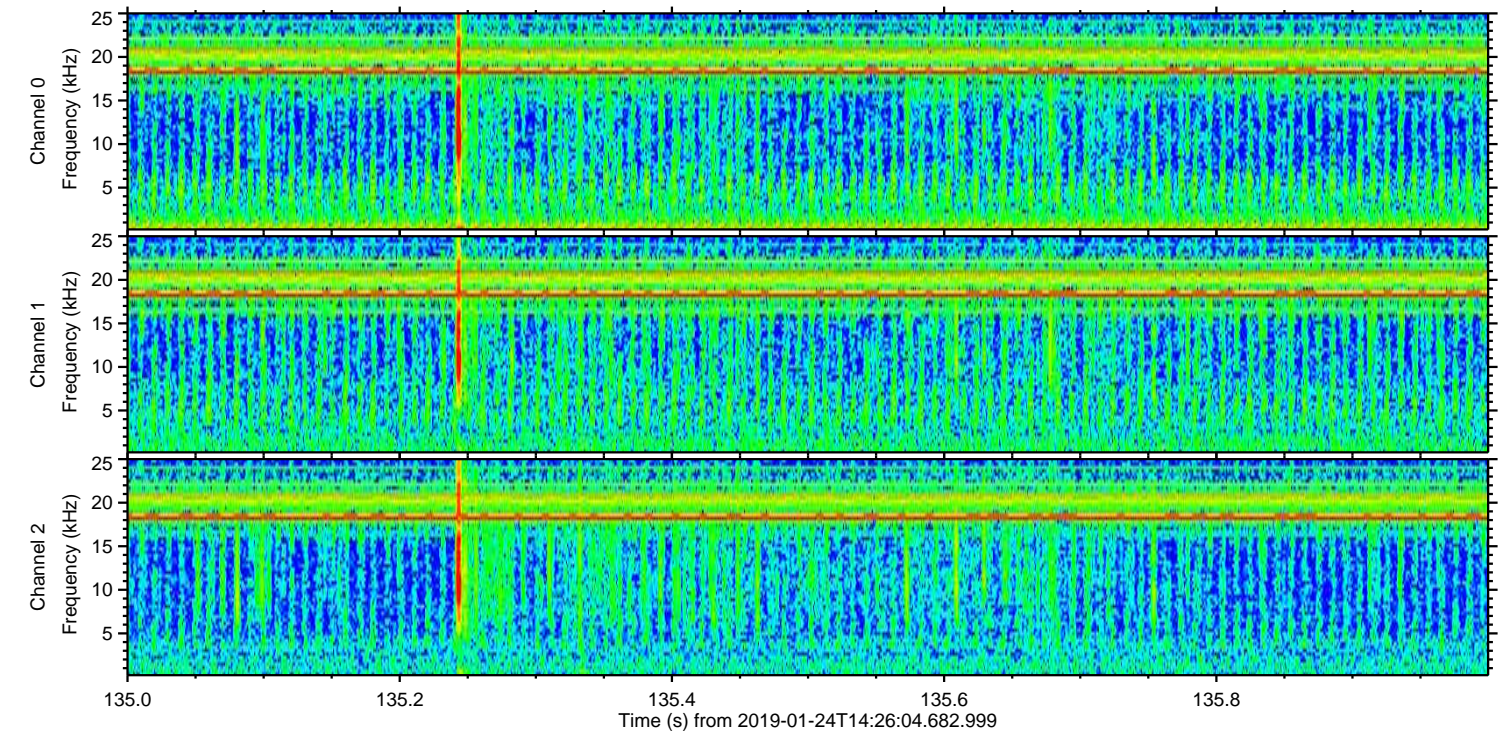
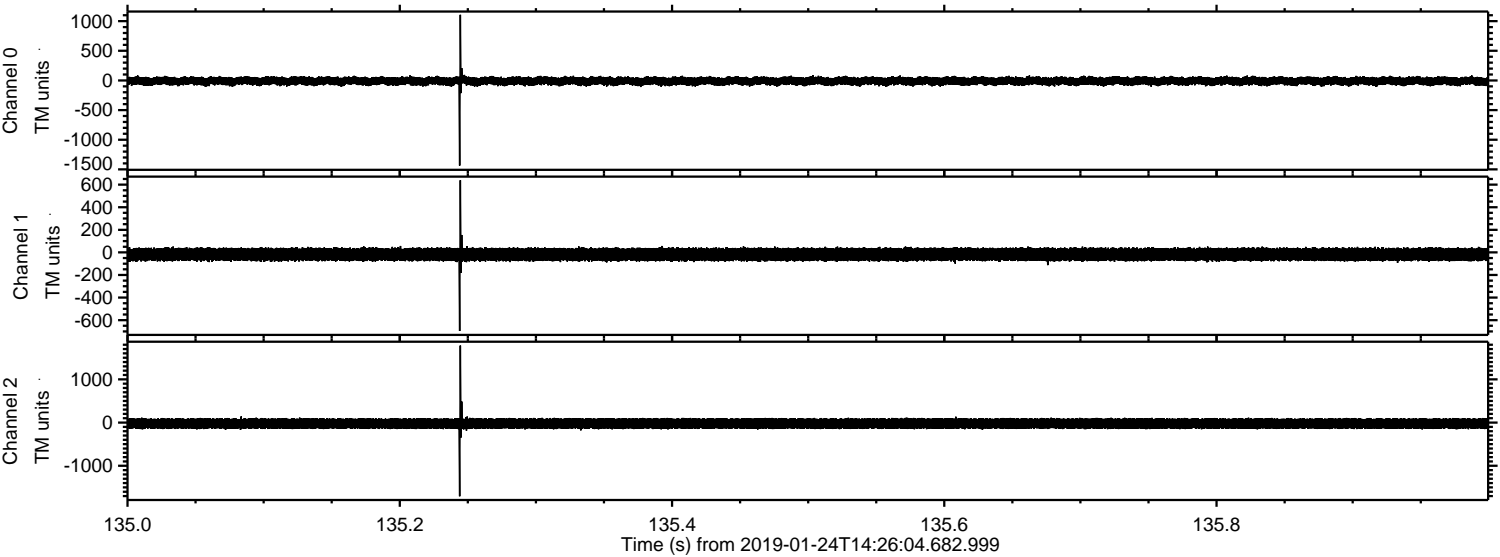


Processed Thu Jan 24 15:34:05 2019 by ELM ver.2012-10-06 from 001__elm20190124_142603__dat00.bin

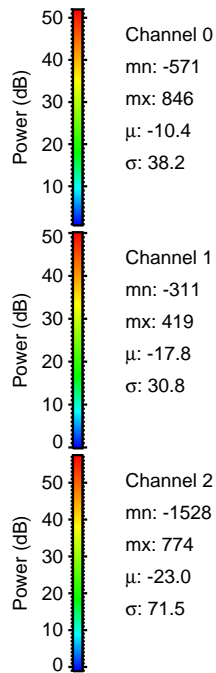
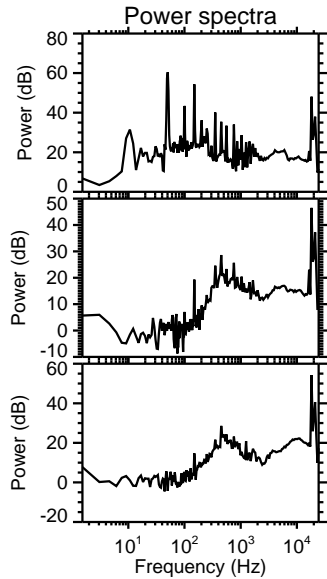
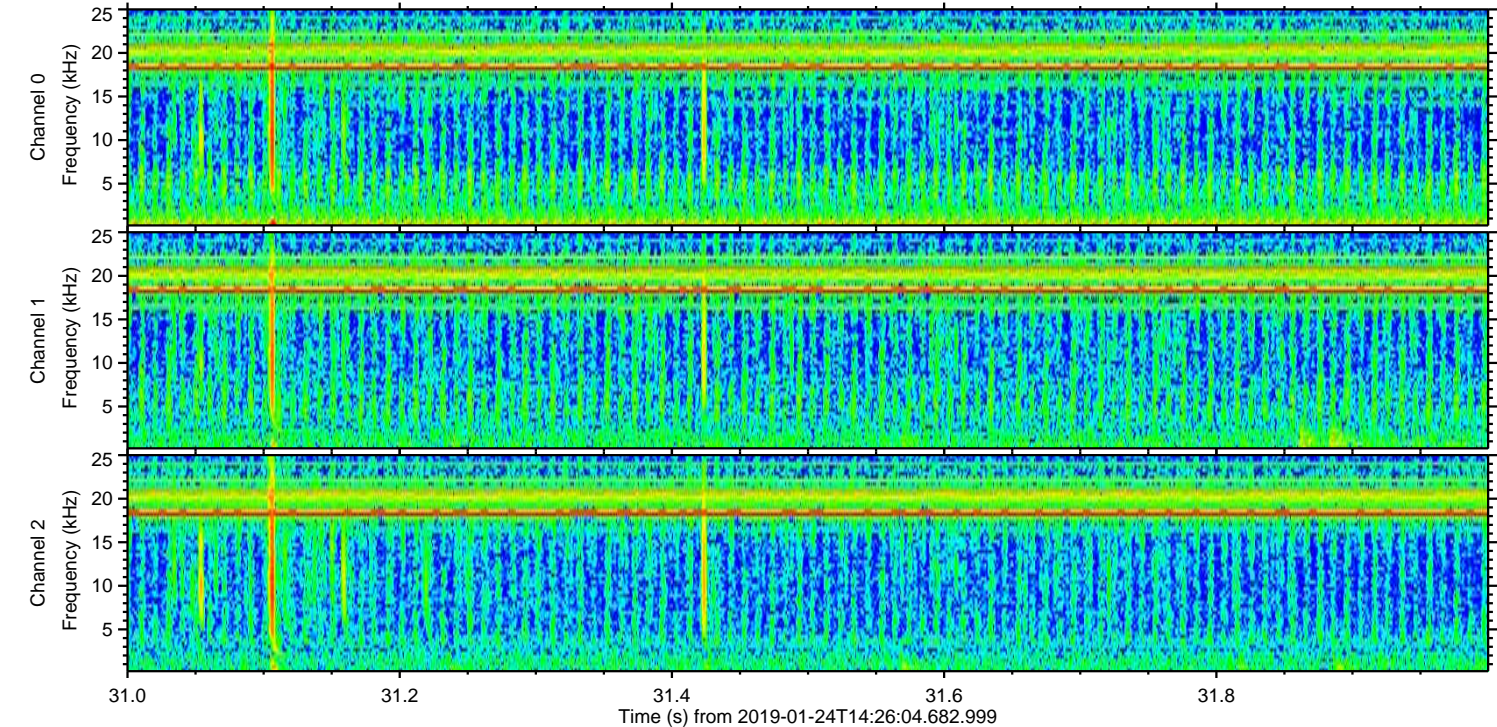
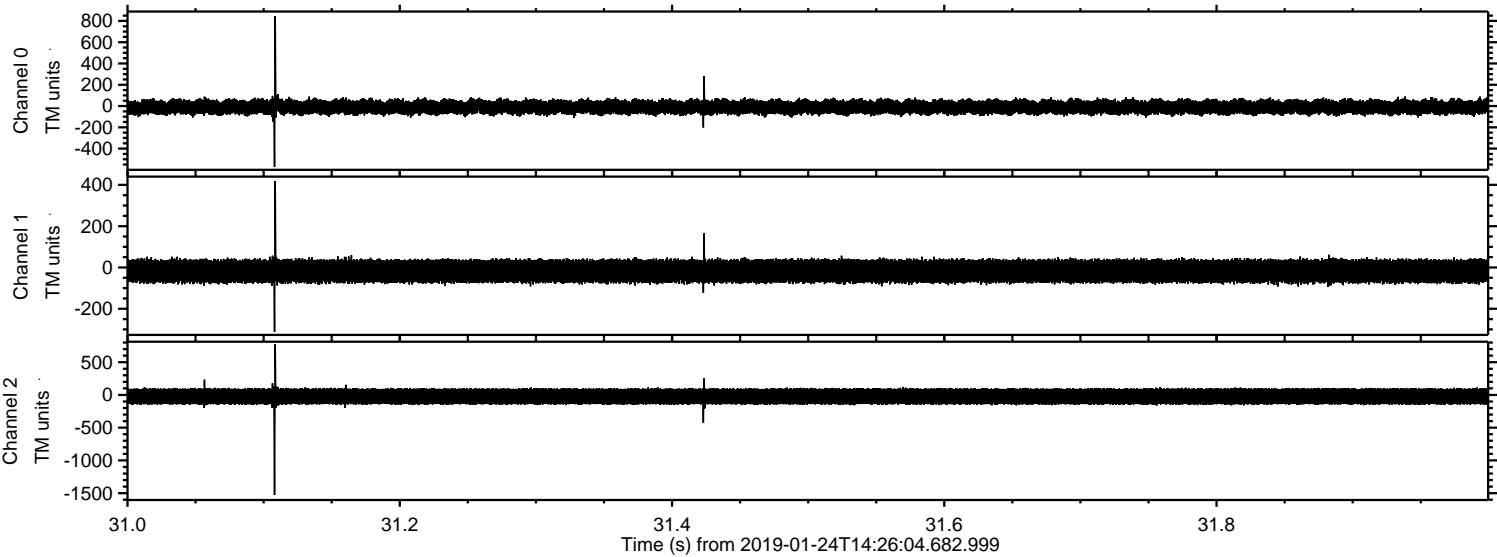


ELMAVAN 3D WAVEFORMS (Measured data sampled at 50 kHz) 51000 packets of 144 samples from 2019-01-24T14:26:04.682.999. Part 136/147

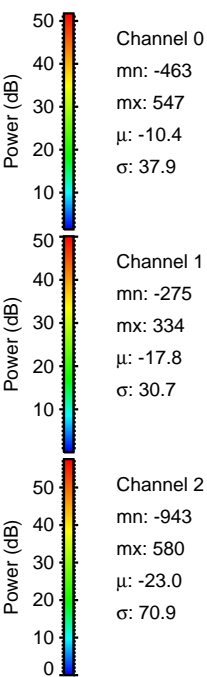
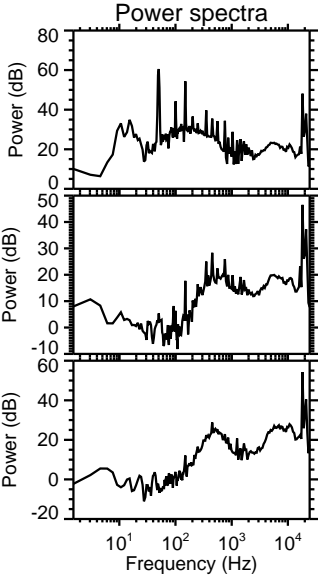
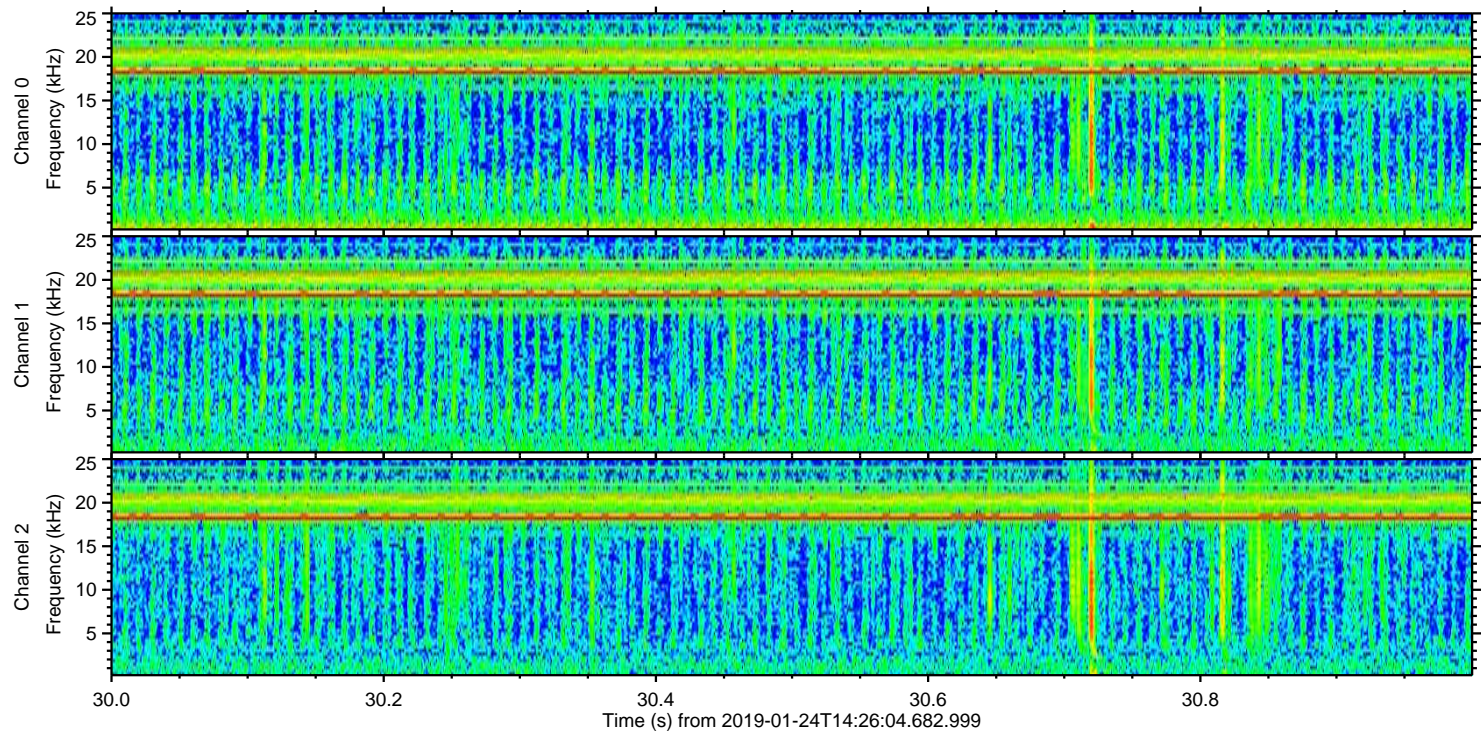
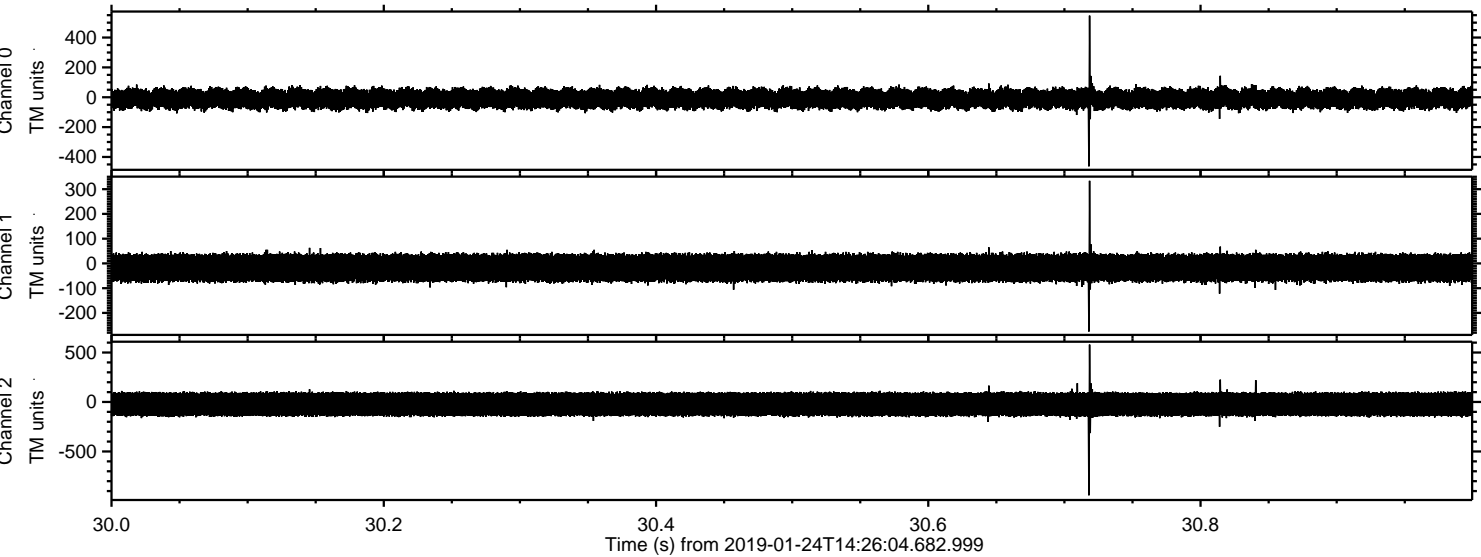
Processed Thu Jan 24 15:34:06 2019 by ELM ver.2012-10-06 from 001__elm20190124_142603__dat00.bin



Processed Thu Jan 24 15:34:07 2019 by ELM ver.2012-10-06 from 001__elm20190124_142603__dat00.bin



Processed Thu Jan 24 15:34:07 2019 by ELM ver.2012-10-06 from 001__elm20190124_142603__dat00.bin

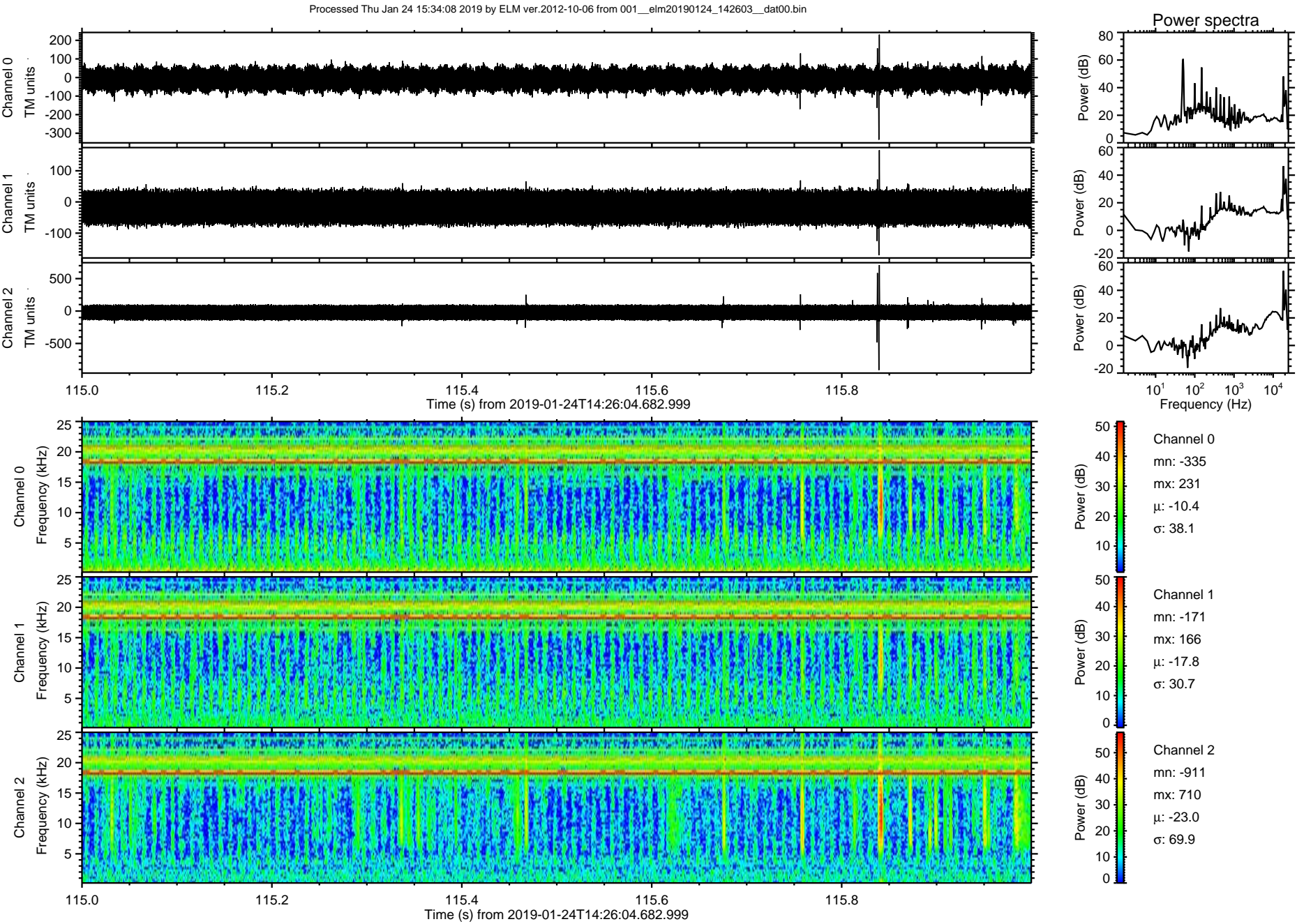


Channel 0
mn: -463
mx: 547
 μ : -10.4
 σ : 37.9

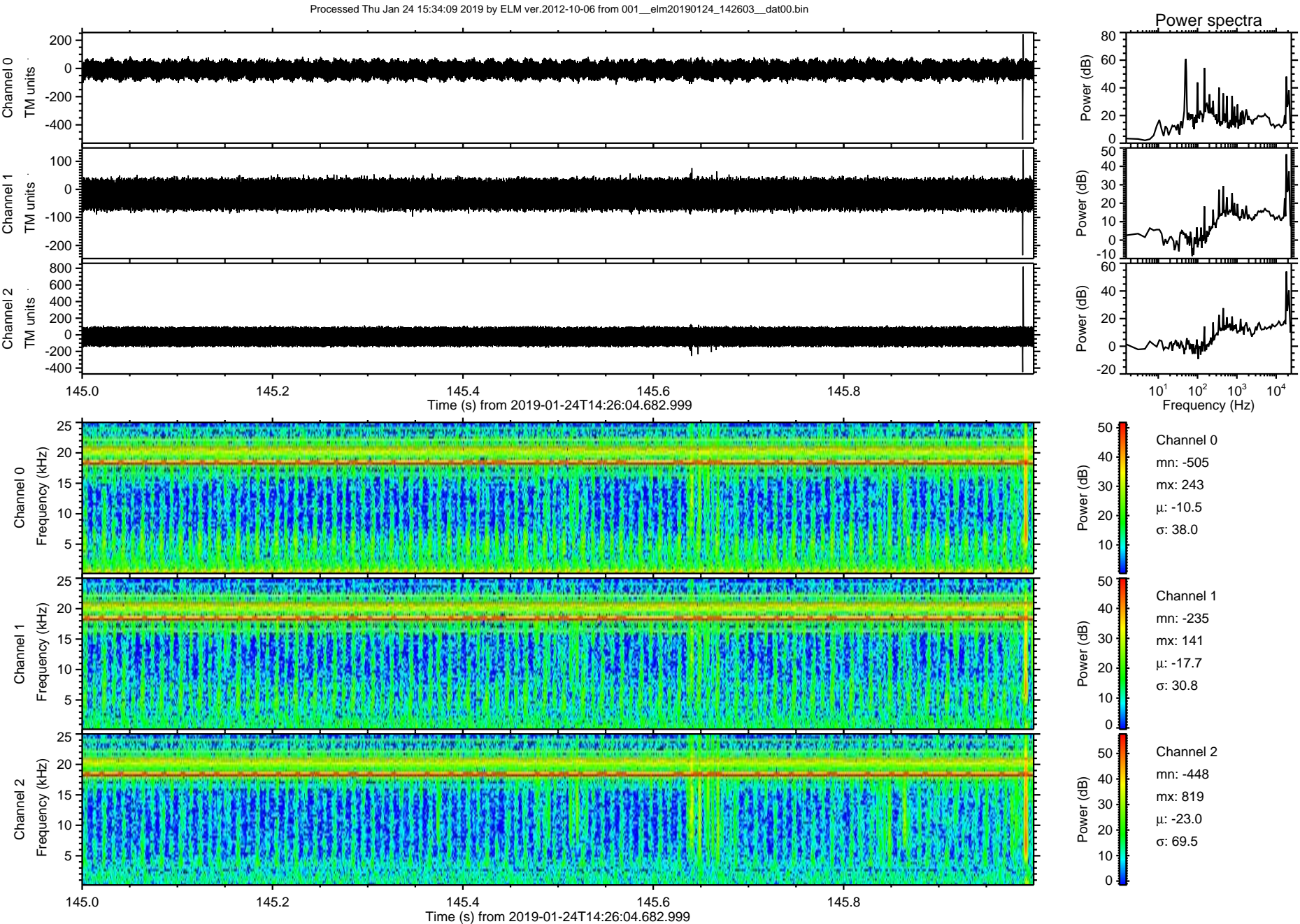
Channel 1
mn: -275
mx: 334
 μ : -17.8
 σ : 30.7

Channel 2
mn: -943
mx: 580
 μ : -23.0
 σ : 70.9

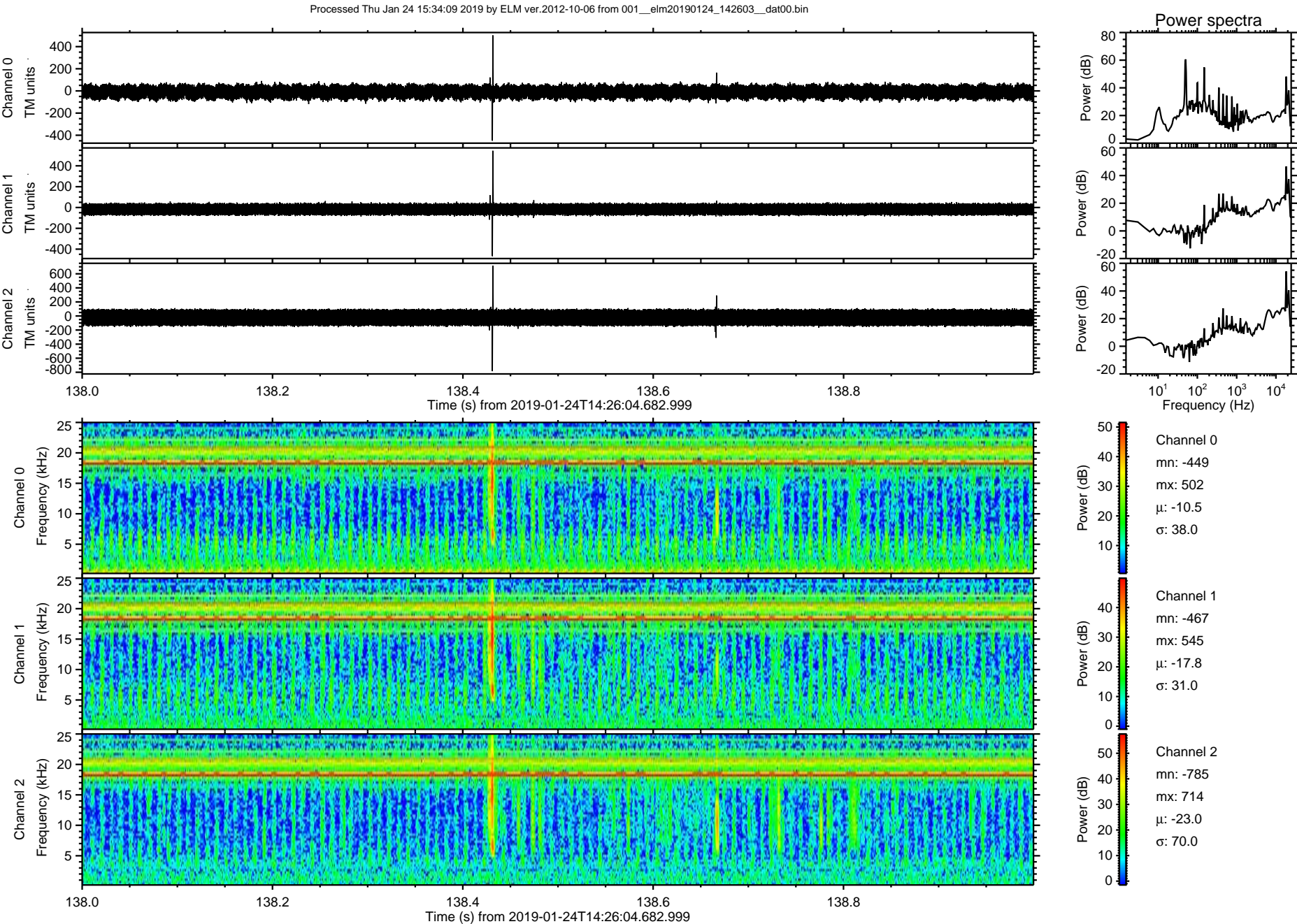
ELMAVAN 3D WAVEFORMS (Measured data sampled at 50 kHz) 51000 packets of 144 samples from 2019-01-24T14:26:04.682.999. Part 116/147



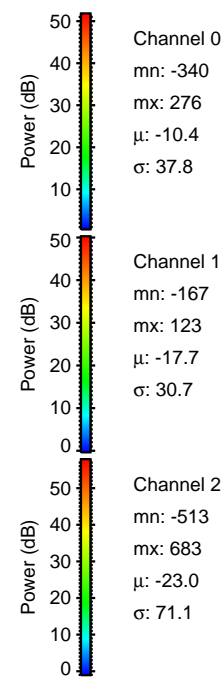
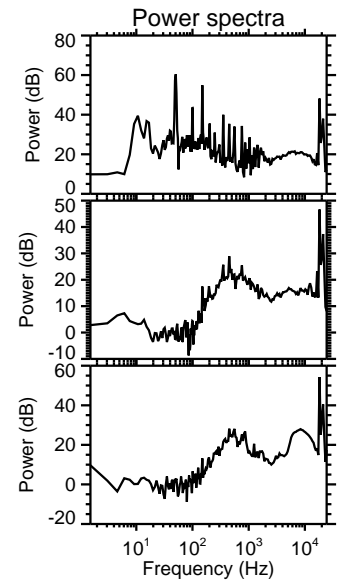
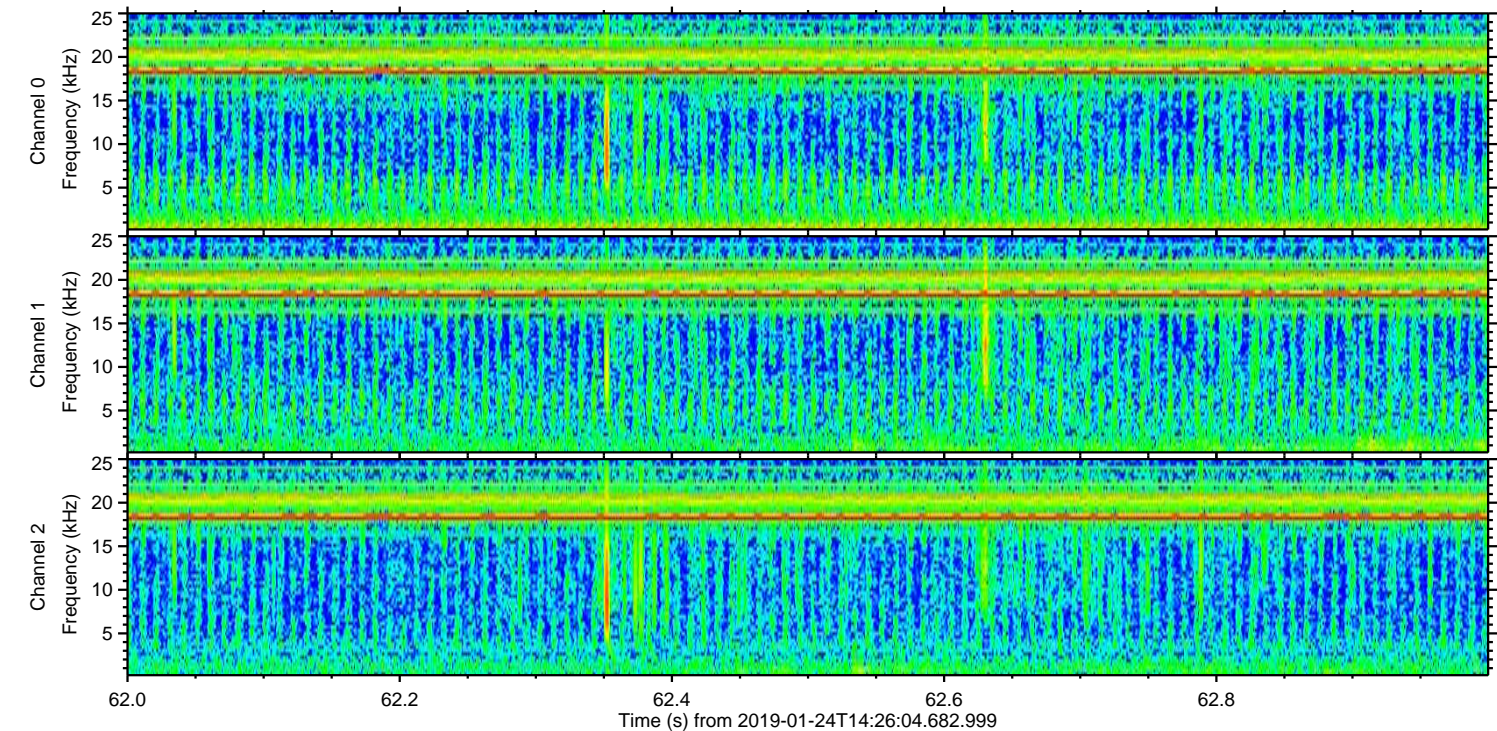
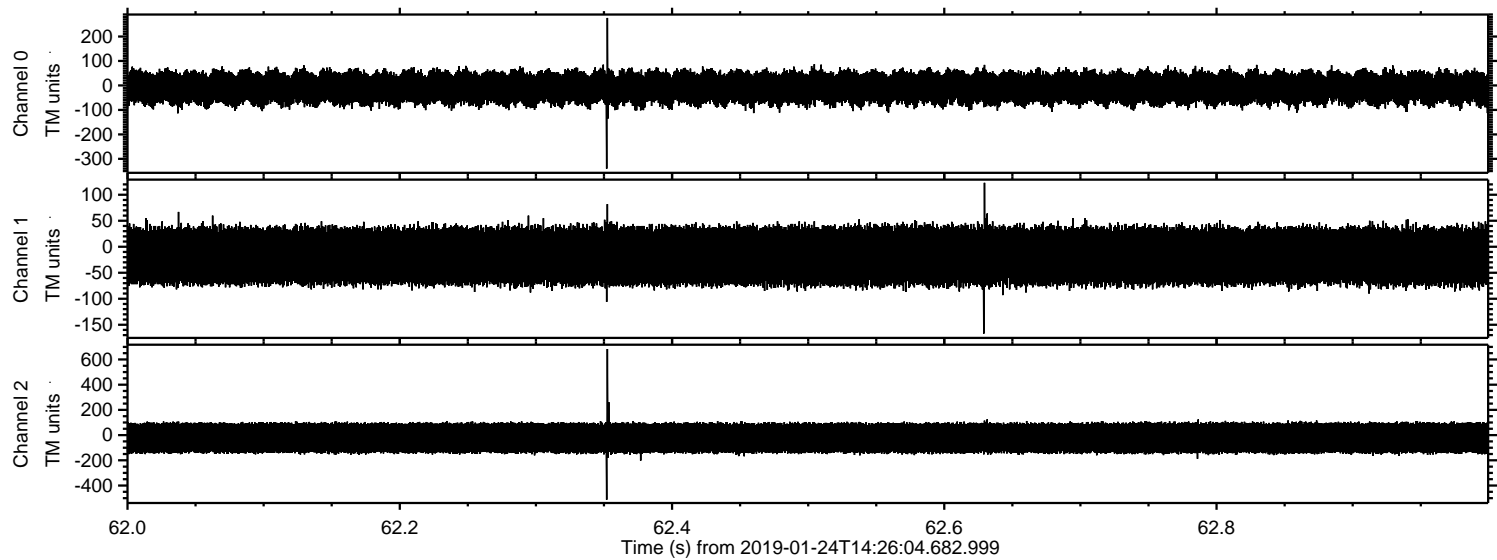
ELMAVAN 3D WAVEFORMS (Measured data sampled at 50 kHz) 51000 packets of 144 samples from 2019-01-24T14:26:04.682.999. Part 146/147



ELMAVAN 3D WAVEFORMS (Measured data sampled at 50 kHz) 51000 packets of 144 samples from 2019-01-24T14:26:04.682.999. Part 139/147



Processed Thu Jan 24 15:34:10 2019 by ELM ver.2012-10-06 from 001__elm20190124_142603__dat00.bin



Channel 0
mn: -340
mx: 276
 μ : -10.4
 σ : 37.8

Channel 1
mn: -167
mx: 123
 μ : -17.7
 σ : 30.7

Channel 2
mn: -513
mx: 683
 μ : -23.0
 σ : 71.1

