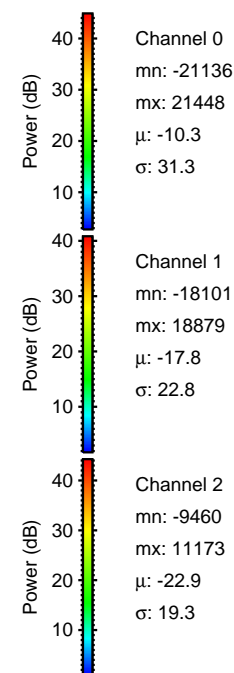
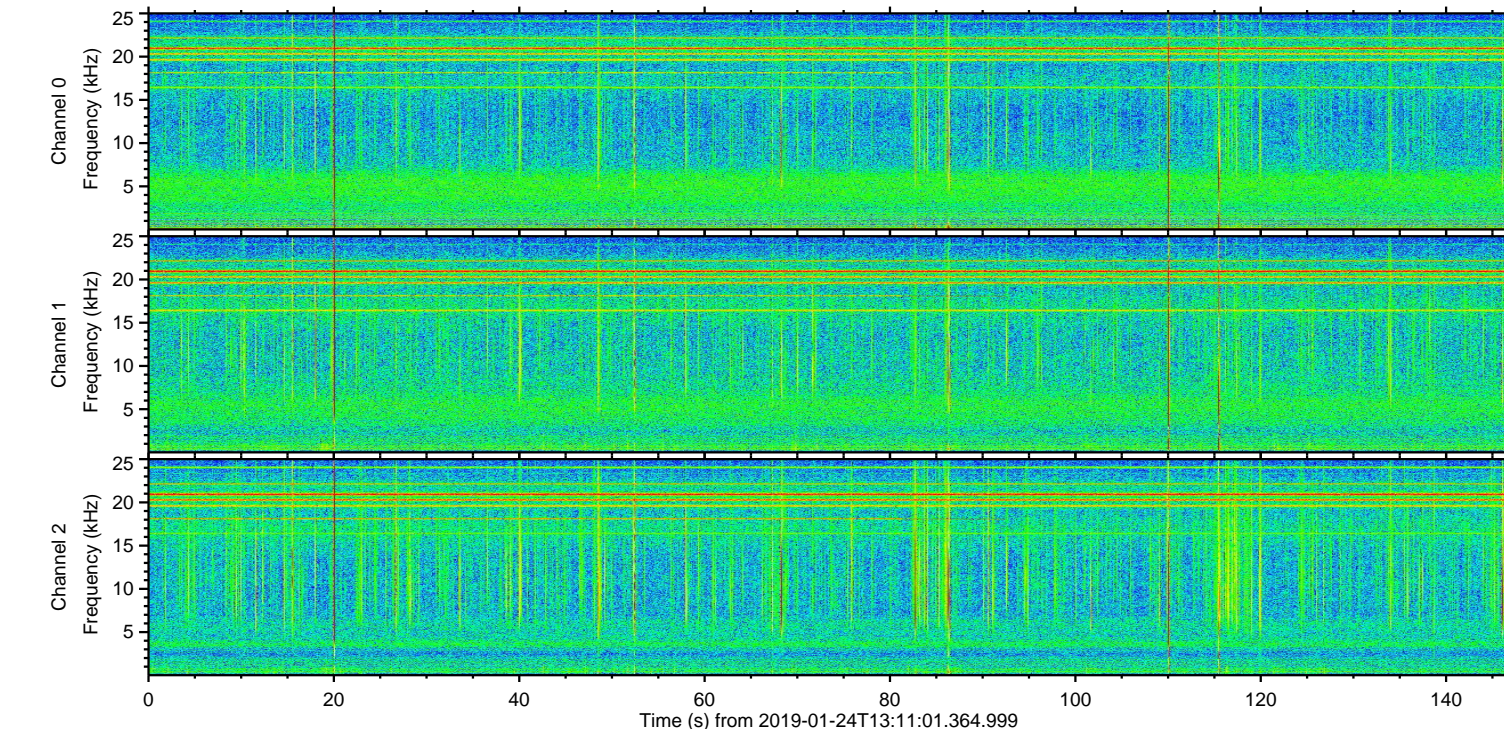
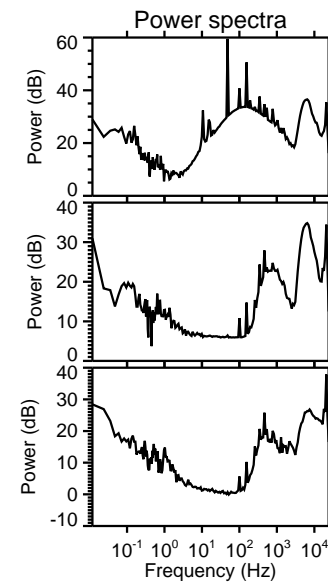
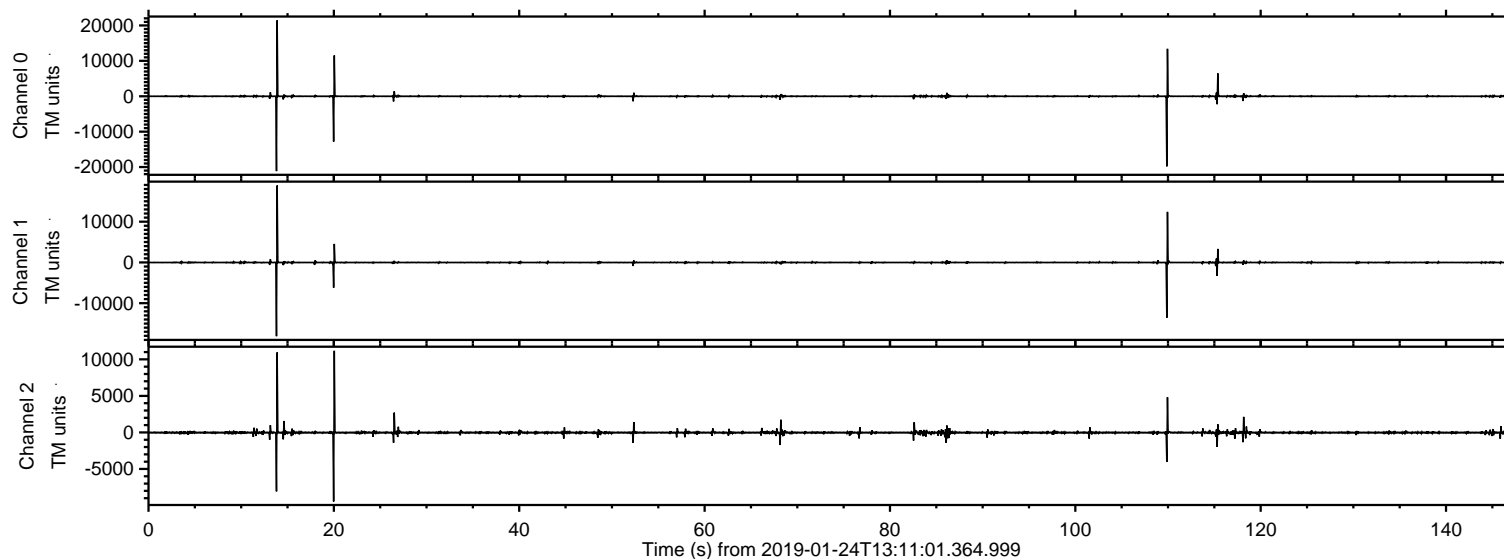


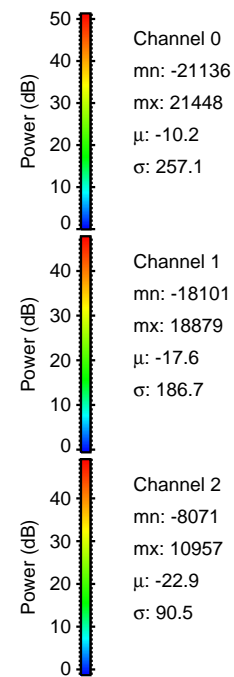
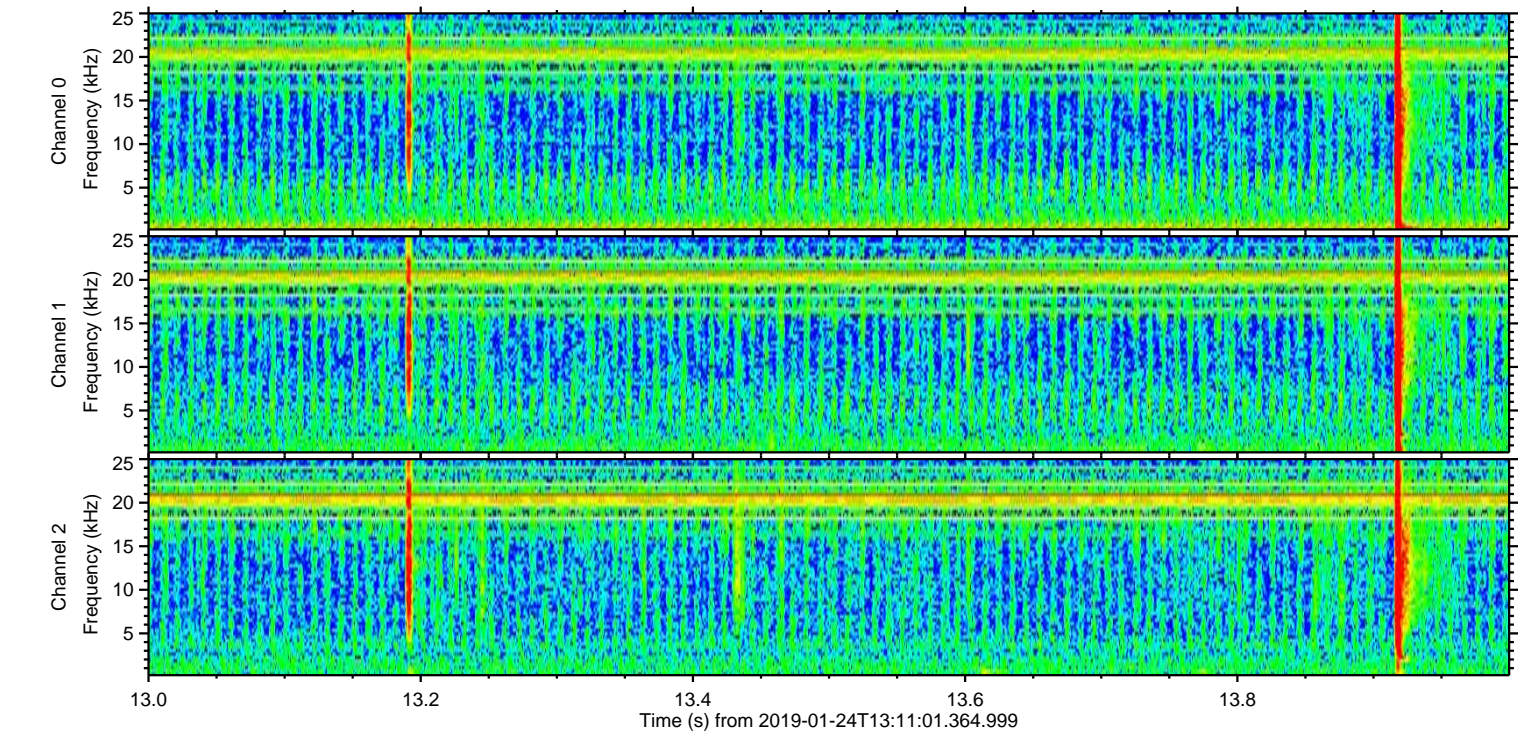
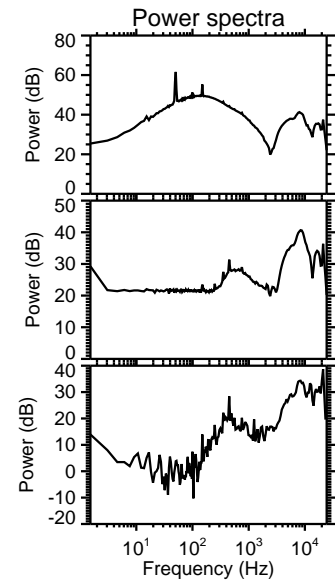
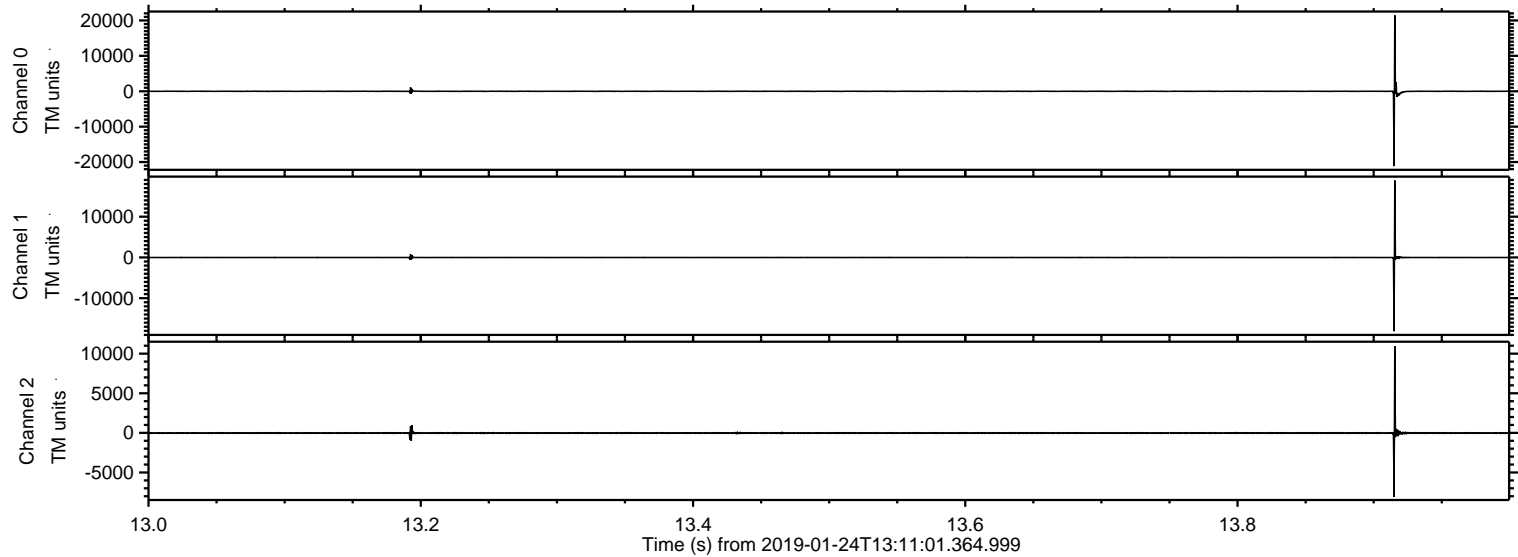
ELMAVAN 3D WAVEFORMS (Measured data sampled at 50 kHz) 51000 packets of 144 samples from 2019-01-24T13:11:01.364.999.

Processed Thu Jan 24 14:18:23 2019 by ELM ver.2012-10-06 from 001__elm20190124_131100__dat00.bin



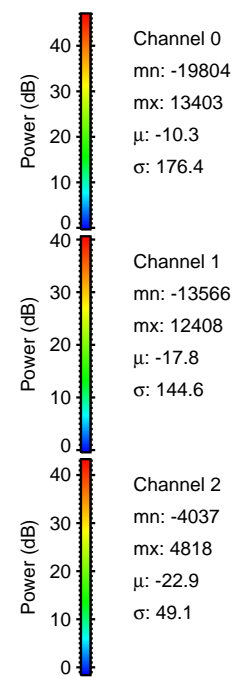
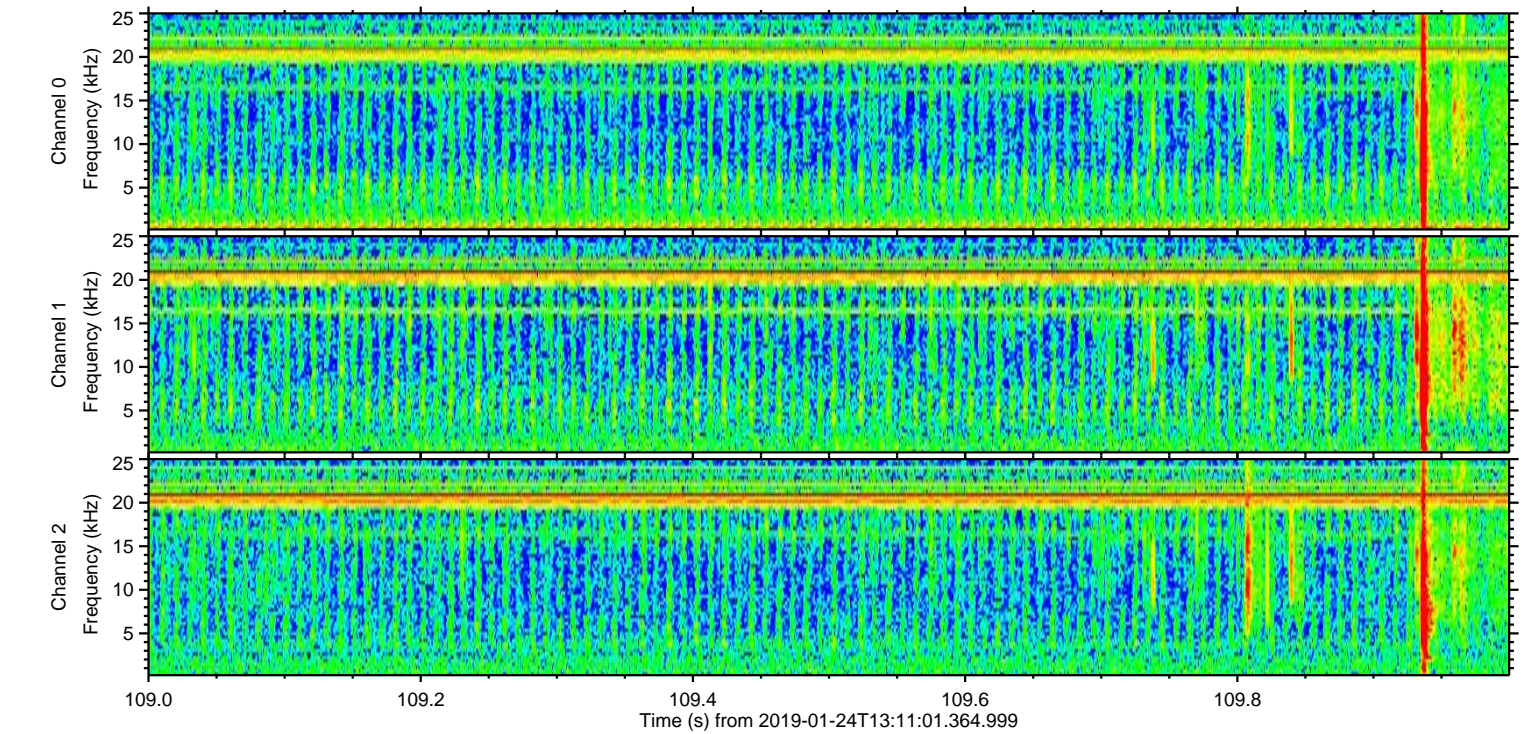
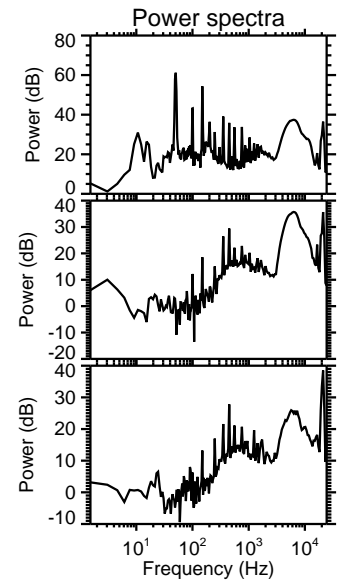
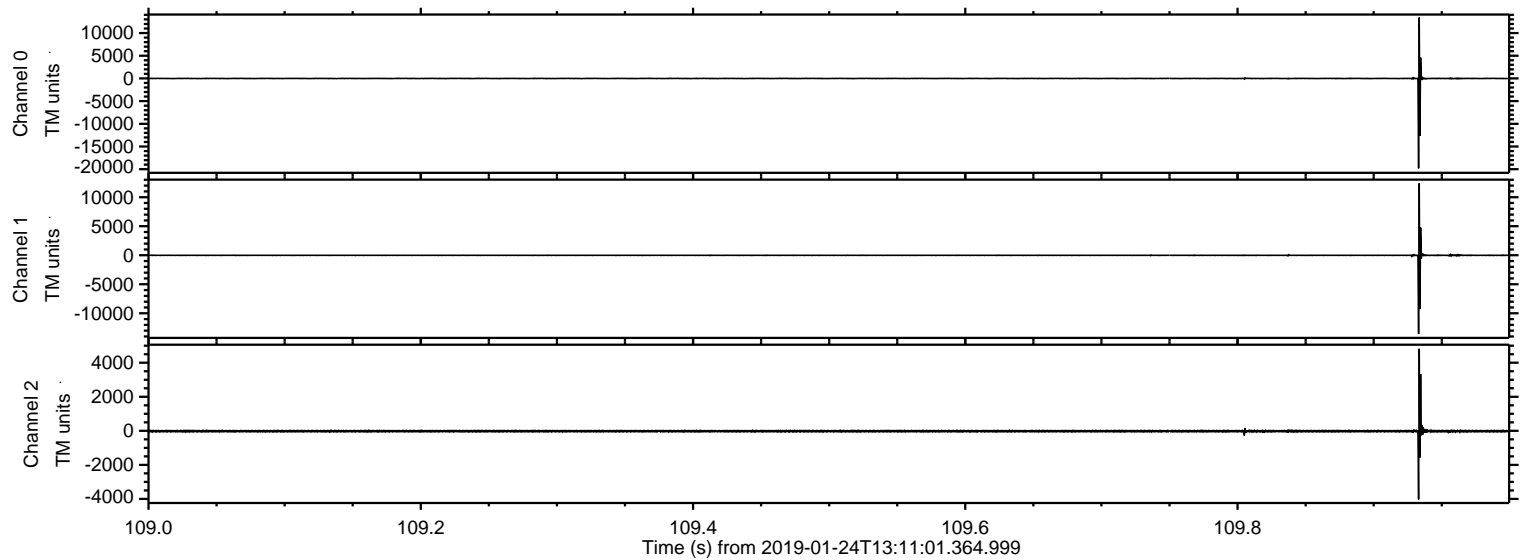
ELMAVAN 3D WAVEFORMS (Measured data sampled at 50 kHz) 51000 packets of 144 samples from 2019-01-24T13:11:01.364.999. Part 14/147

Processed Thu Jan 24 14:18:29 2019 by ELM ver.2012-10-06 from 001__elm20190124_131100__dat00.bin



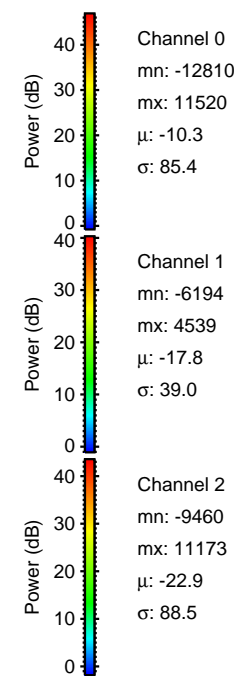
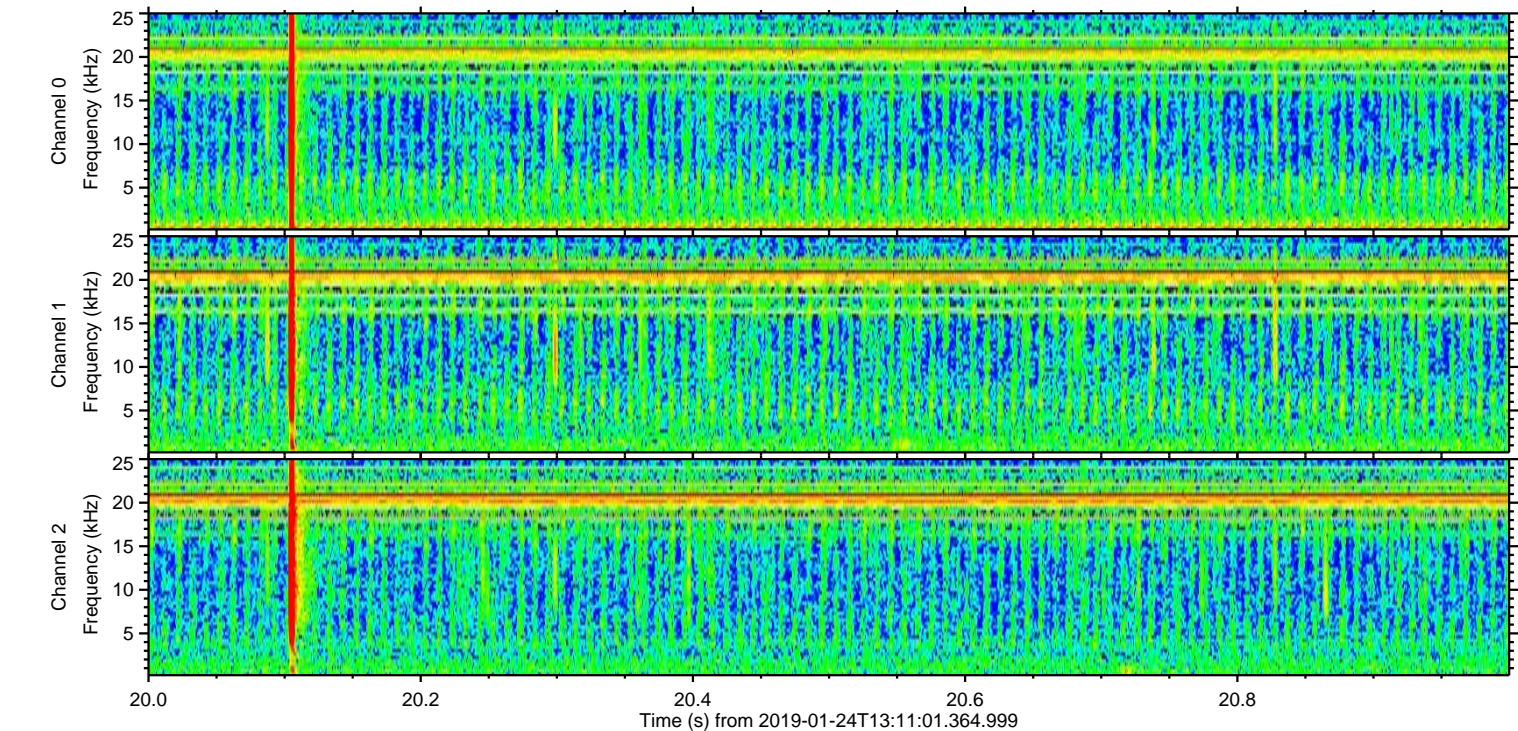
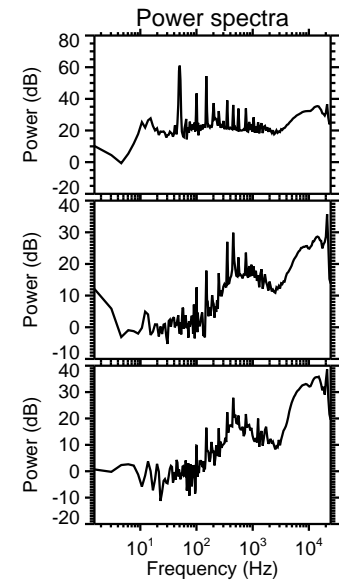
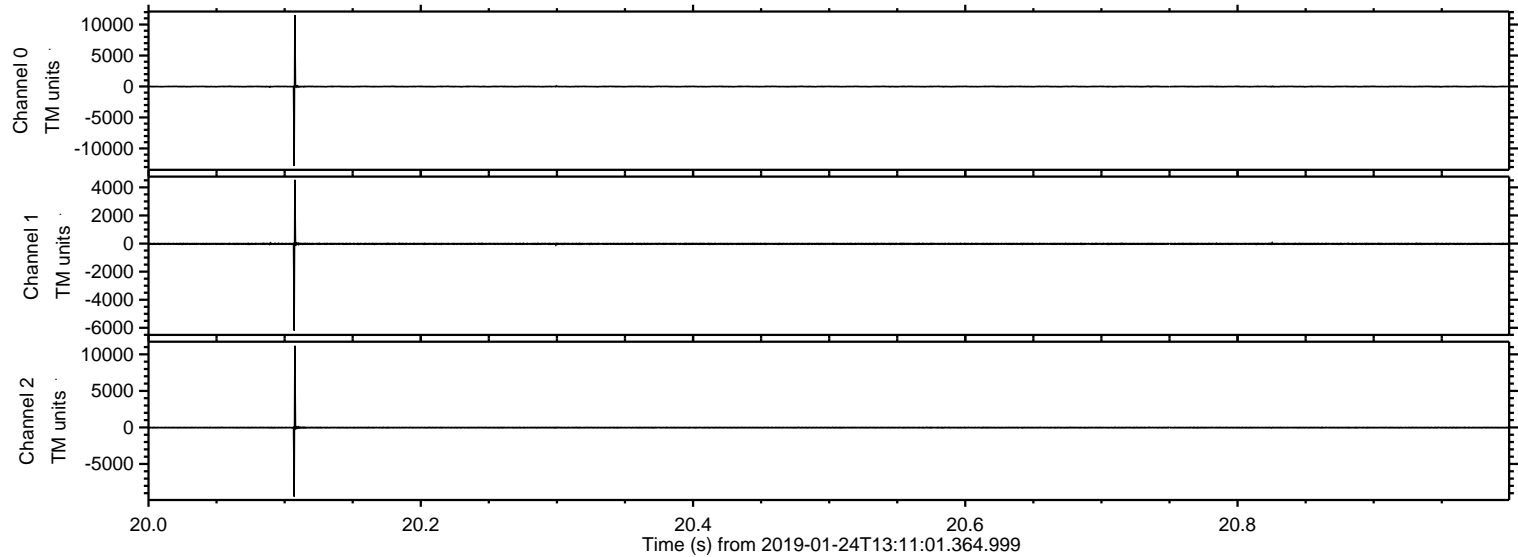
ELMAVAN 3D WAVEFORMS (Measured data sampled at 50 kHz) 51000 packets of 144 samples from 2019-01-24T13:11:01.364.999. Part 110/147

Processed Thu Jan 24 14:18:30 2019 by ELM ver.2012-10-06 from 001__elm20190124_131100__dat00.bin



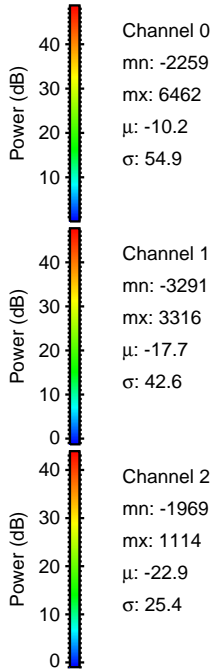
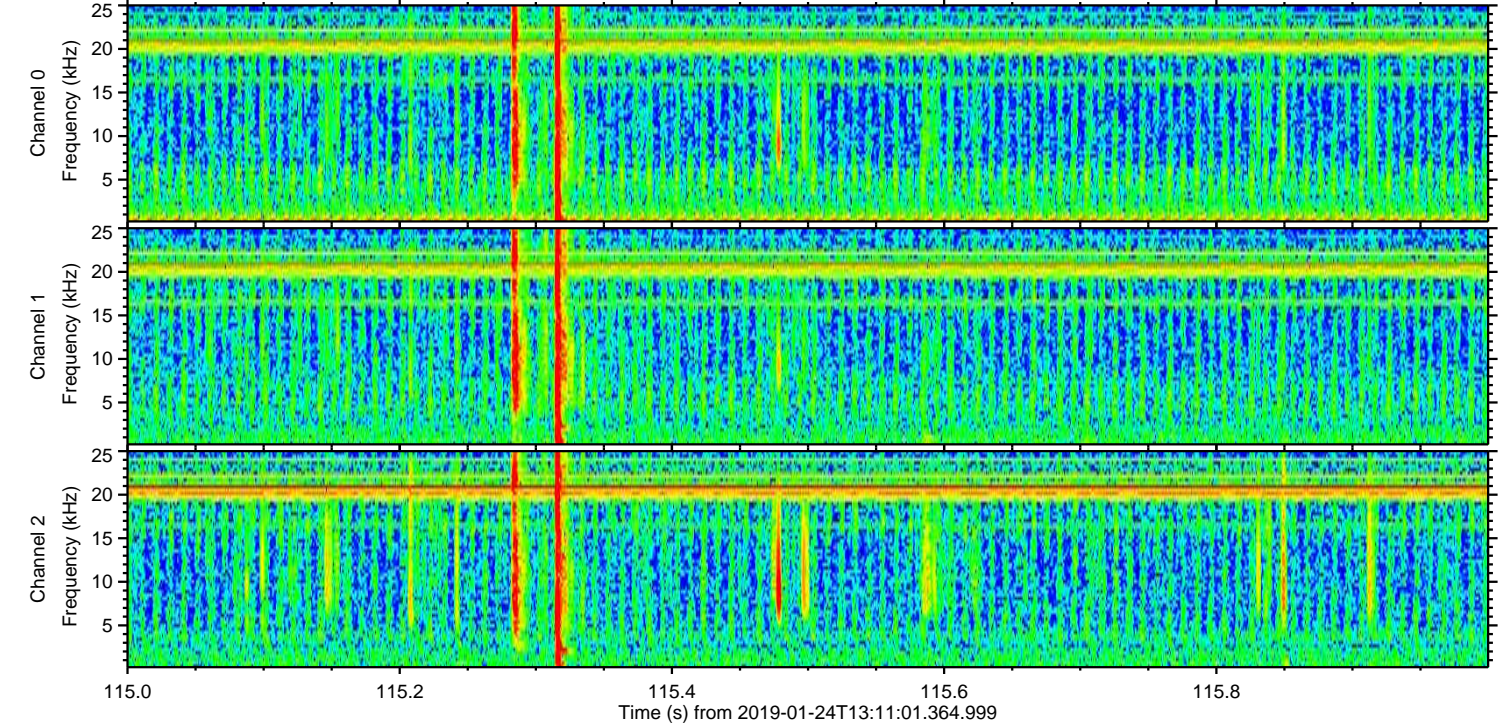
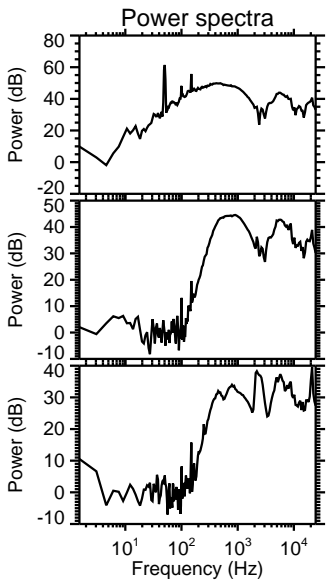
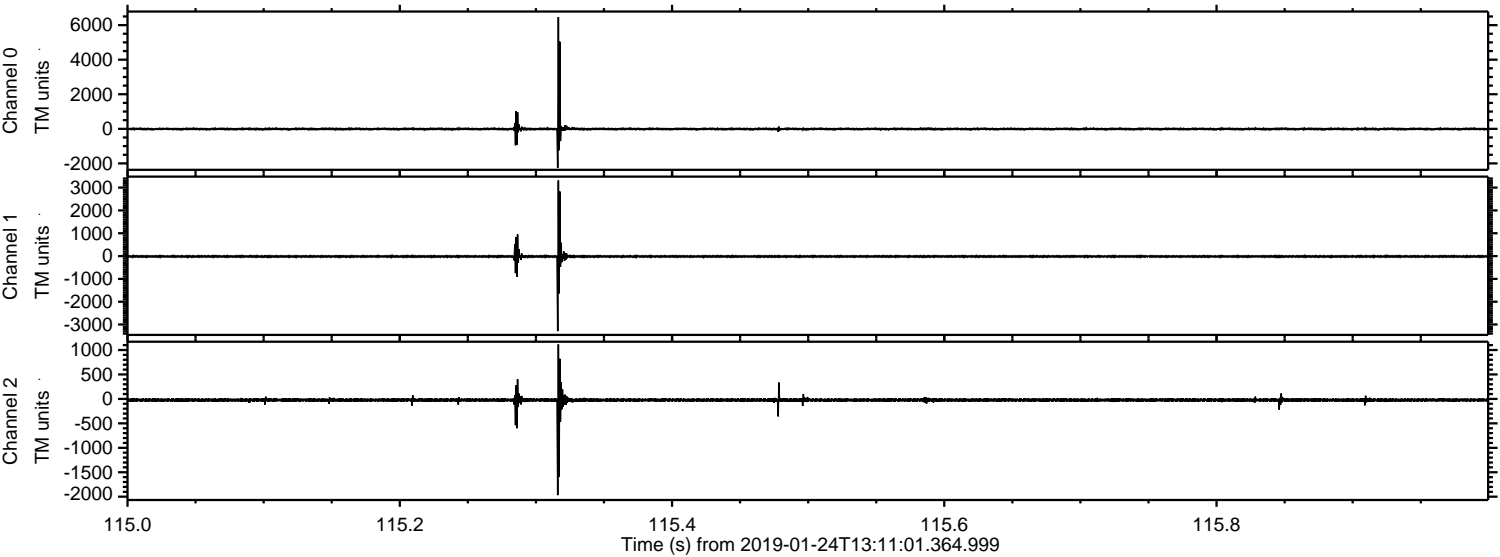
ELMAVAN 3D WAVEFORMS (Measured data sampled at 50 kHz) 51000 packets of 144 samples from 2019-01-24T13:11:01.364.999. Part 21/147

Processed Thu Jan 24 14:18:31 2019 by ELM ver.2012-10-06 from 001__elm20190124_131100__dat00.bin



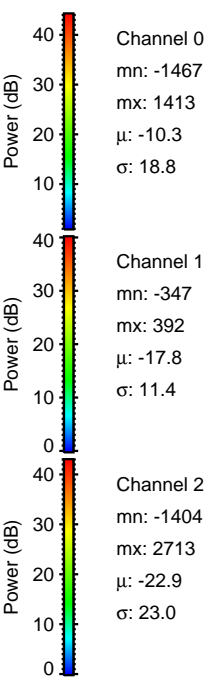
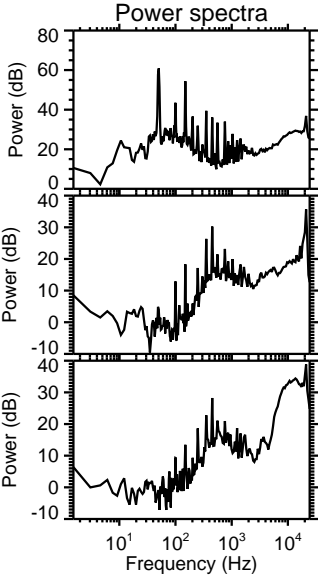
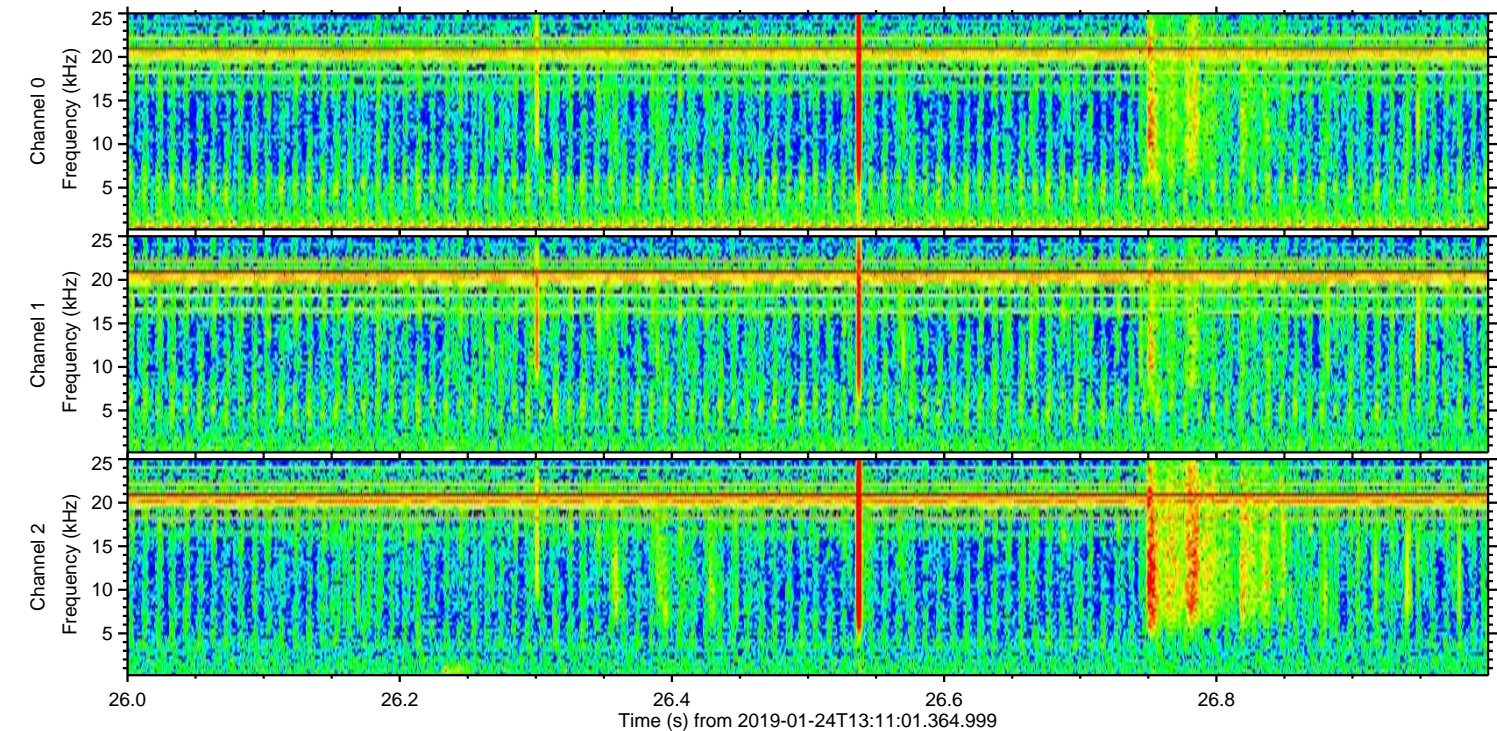
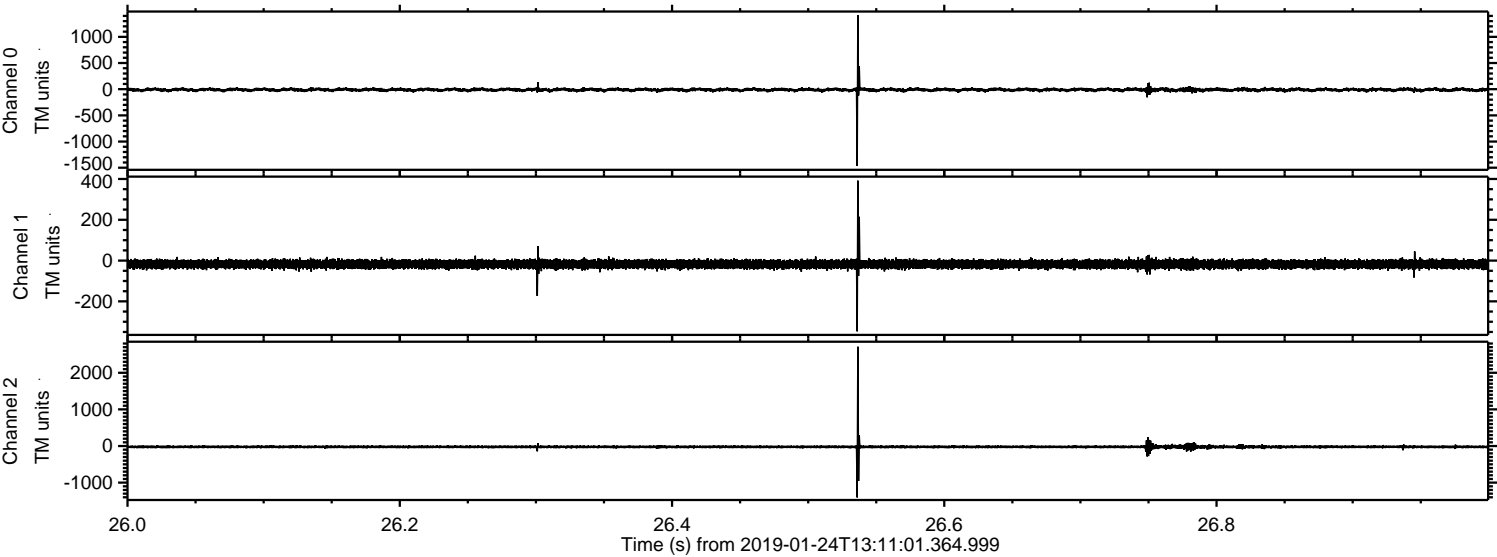
ELMAVAN 3D WAVEFORMS (Measured data sampled at 50 kHz) 51000 packets of 144 samples from 2019-01-24T13:11:01.364.999. Part 116/147

Processed Thu Jan 24 14:18:31 2019 by ELM ver.2012-10-06 from 001__elm20190124_131100__dat00.bin



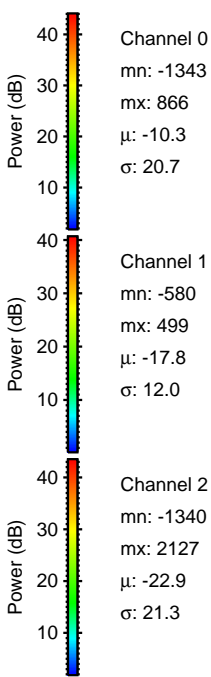
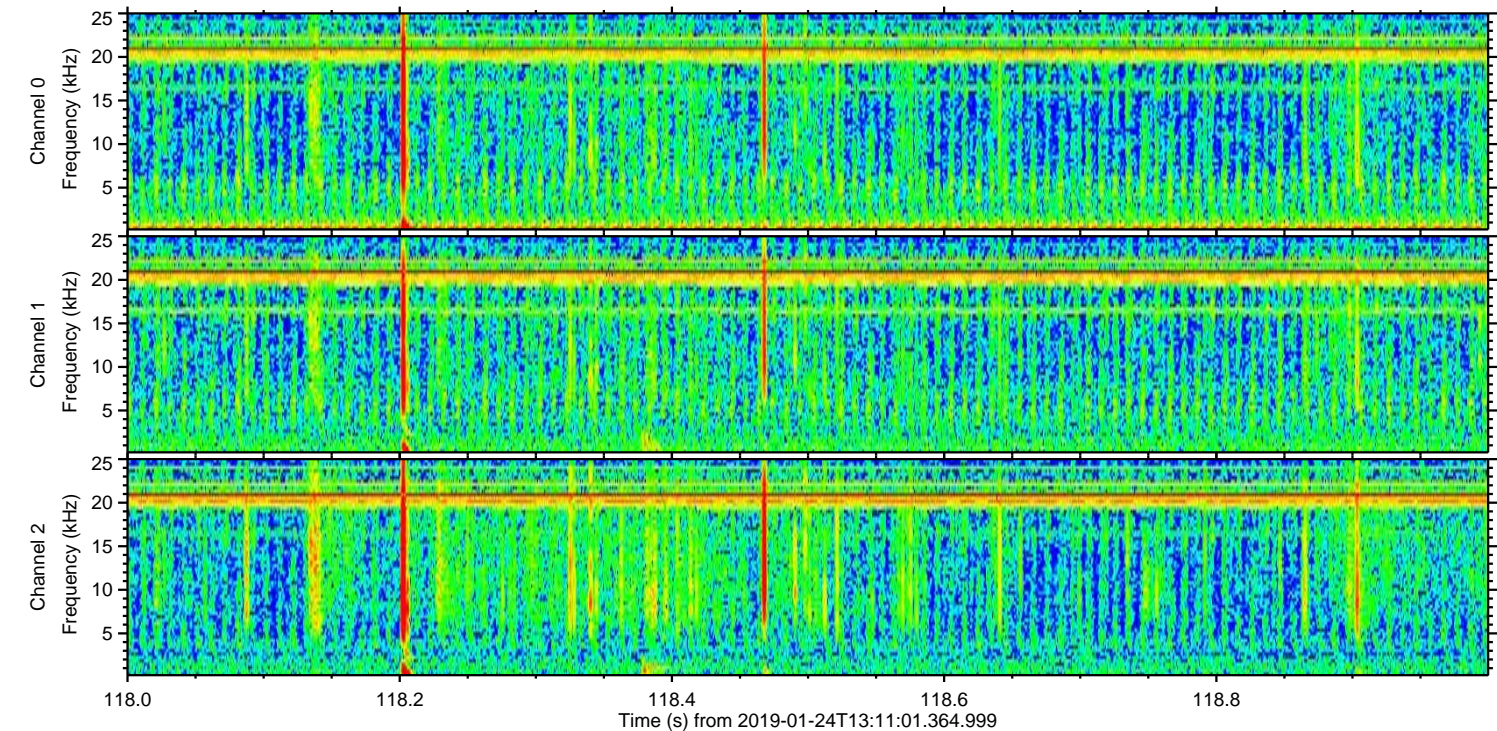
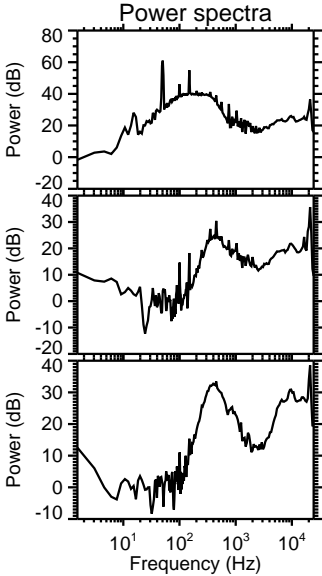
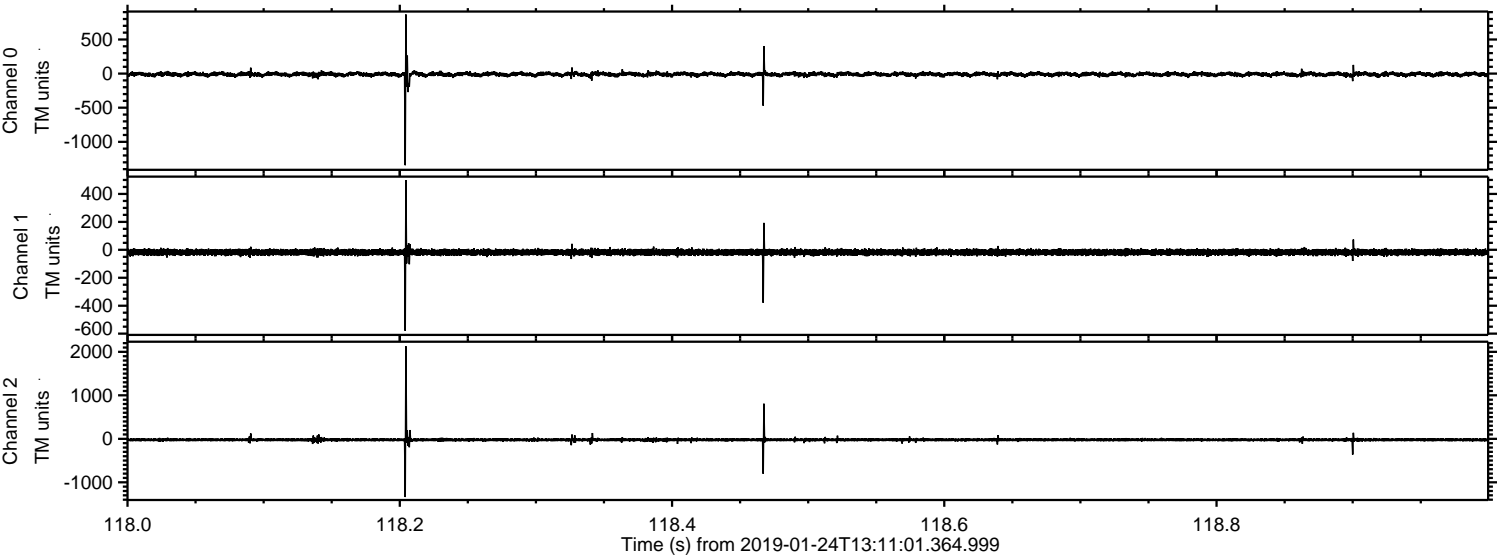
ELMAVAN 3D WAVEFORMS (Measured data sampled at 50 kHz) 51000 packets of 144 samples from 2019-01-24T13:11:01.364.999. Part 27/147

Processed Thu Jan 24 14:18:32 2019 by ELM ver.2012-10-06 from 001__elm20190124_131100__dat00.bin

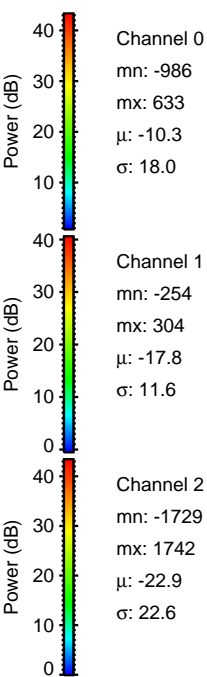
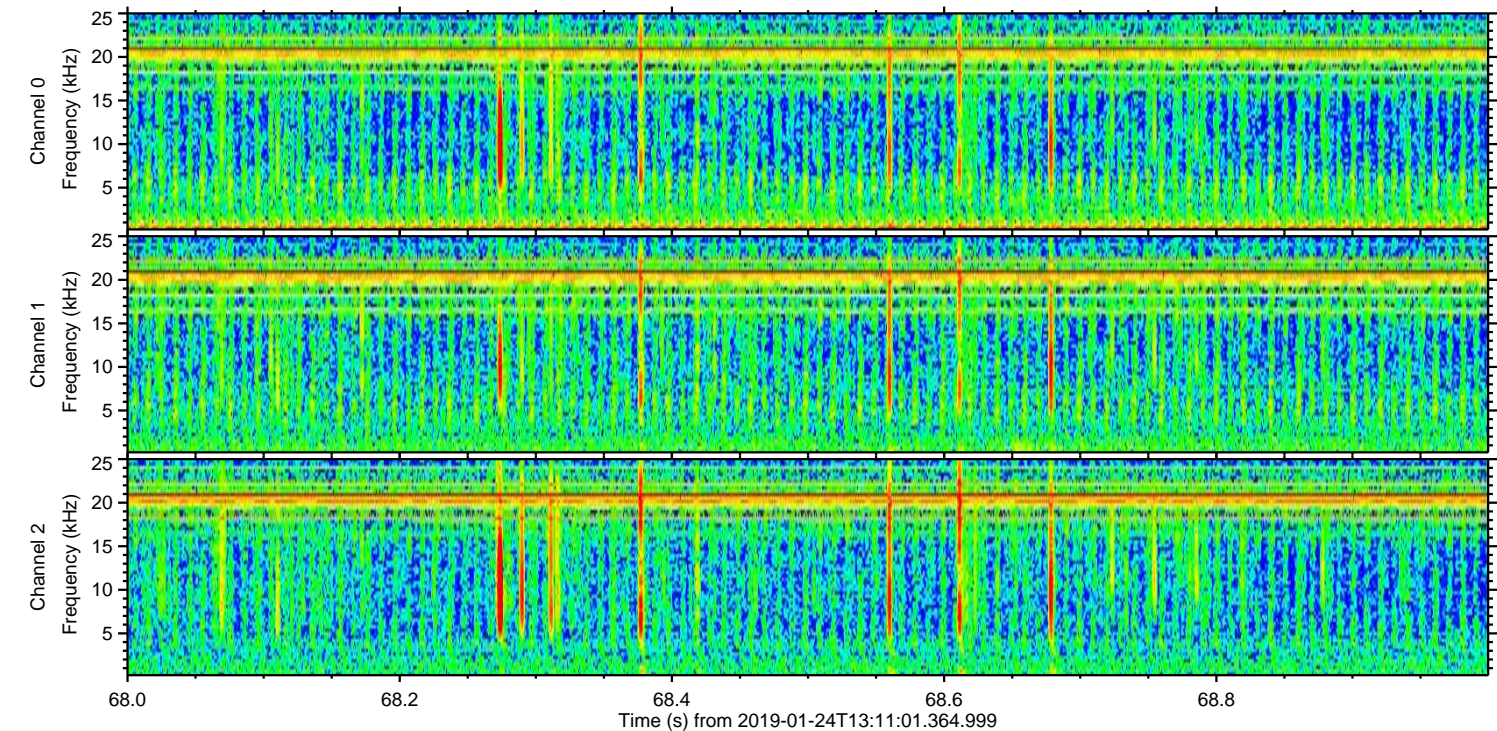
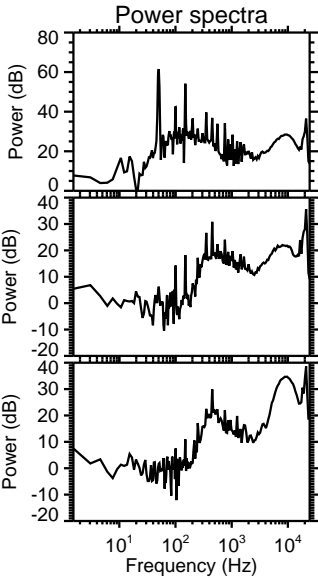
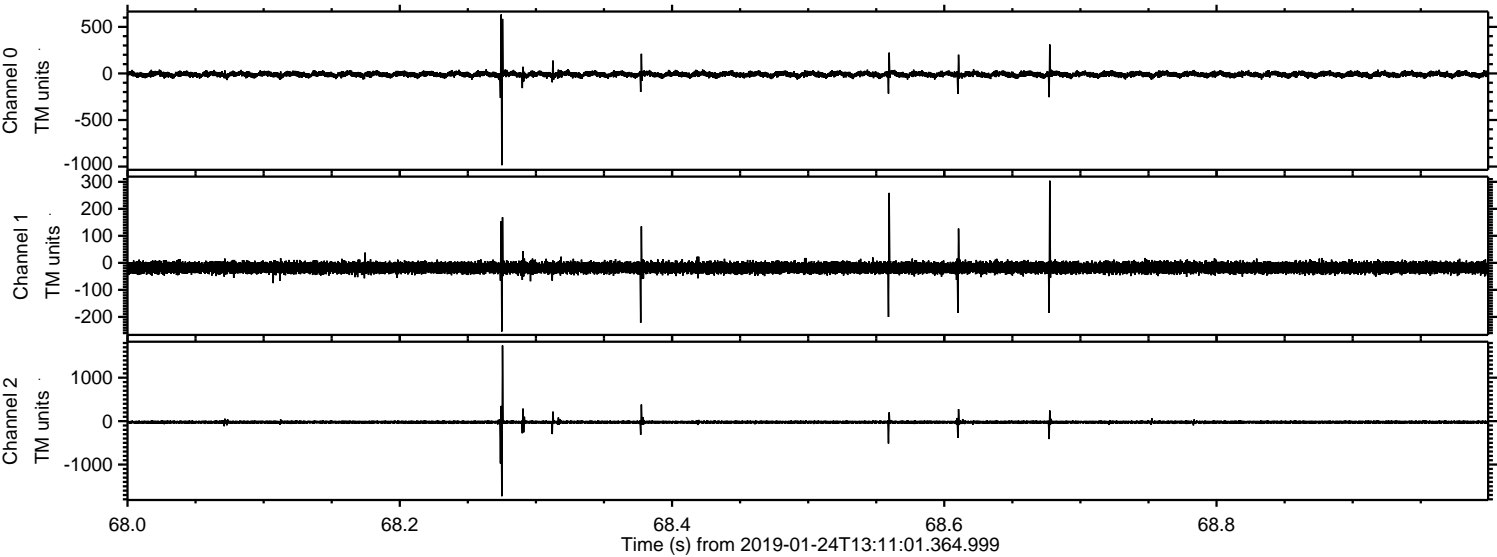


ELMAVAN 3D WAVEFORMS (Measured data sampled at 50 kHz) 51000 packets of 144 samples from 2019-01-24T13:11:01.364.999. Part 119/147

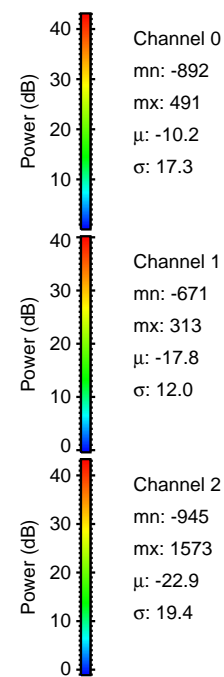
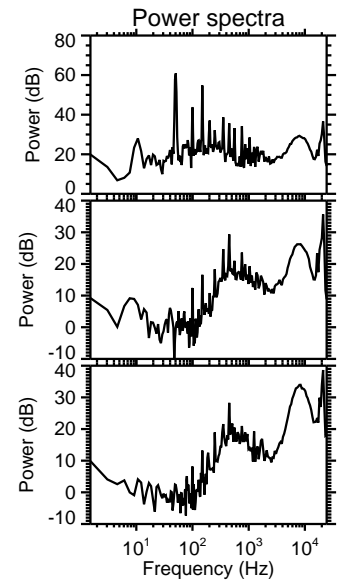
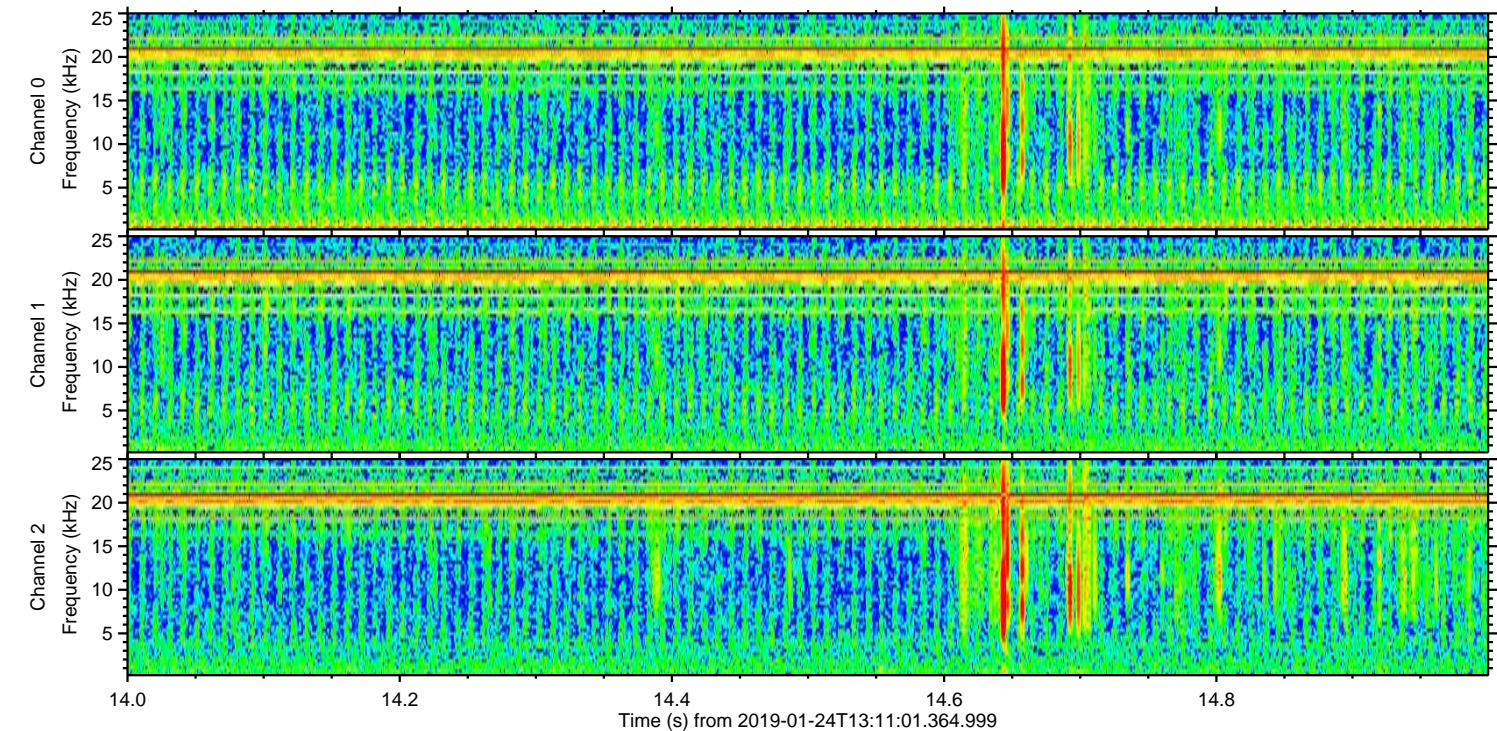
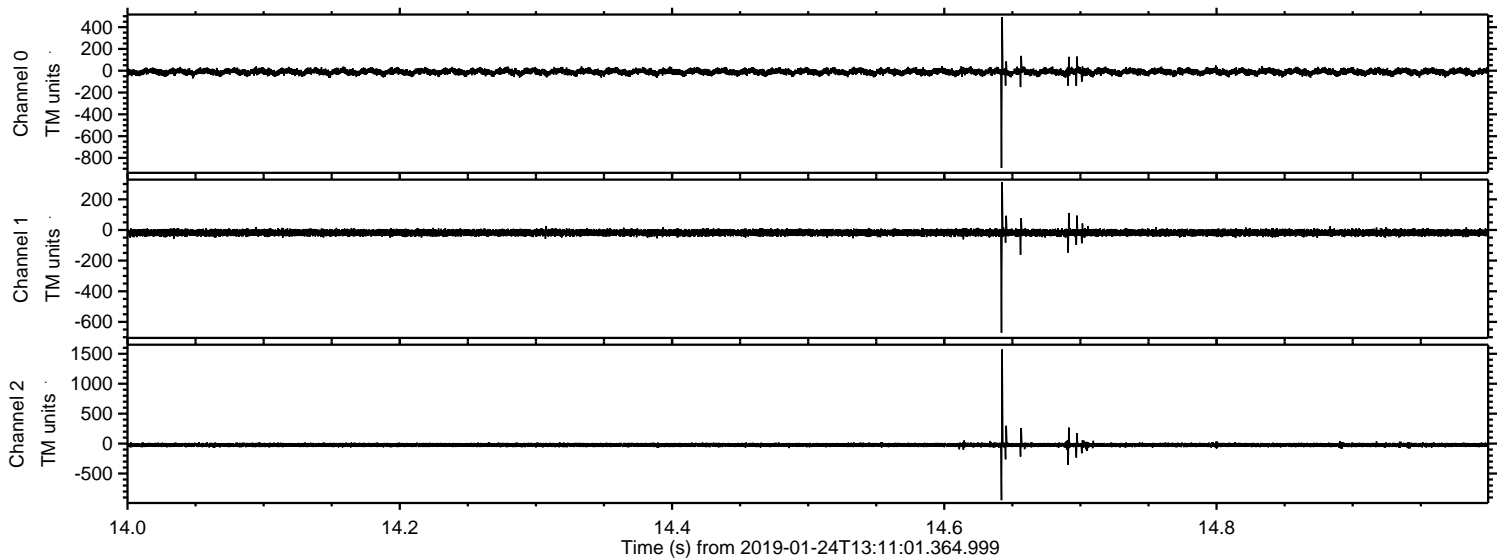
Processed Thu Jan 24 14:18:32 2019 by ELM ver.2012-10-06 from 001__elm20190124_131100__dat00.bin



Processed Thu Jan 24 14:18:33 2019 by ELM ver.2012-10-06 from 001__elm20190124_131100__dat00.bin



Processed Thu Jan 24 14:18:34 2019 by ELM ver.2012-10-06 from 001__elm20190124_131100__dat00.bin



Channel 0
mn: -892
mx: 491
 μ : -10.2
 σ : 17.3

Channel 1
mn: -671
mx: 313
 μ : -17.8
 σ : 12.0

Channel 2
mn: -945
mx: 1573
 μ : -22.9
 σ : 19.4

Processed Thu Jan 24 14:18:34 2019 by ELM ver.2012-10-06 from 001__elm20190124_131100__dat00.bin

