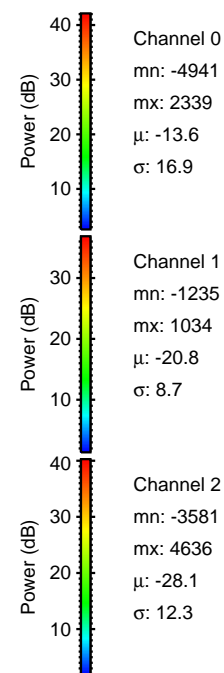
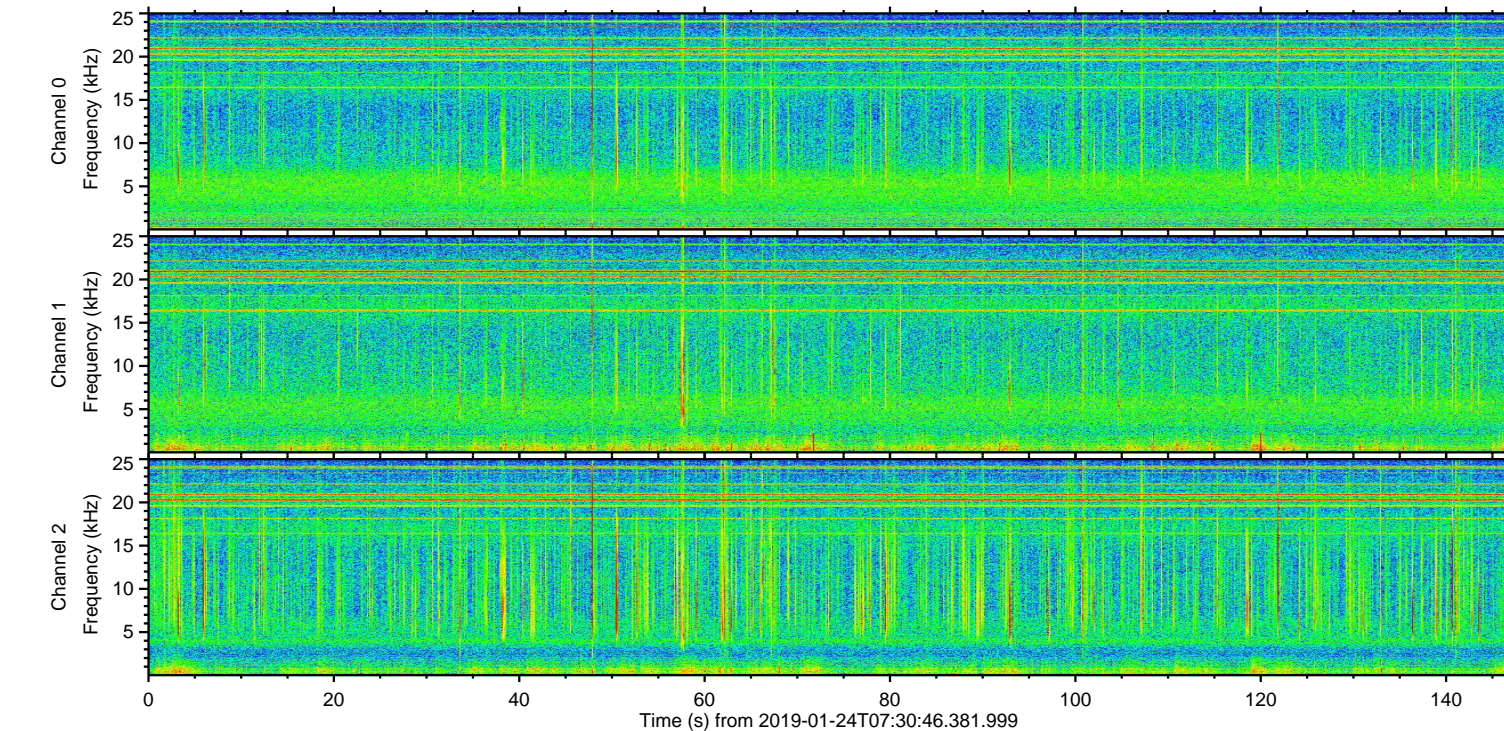
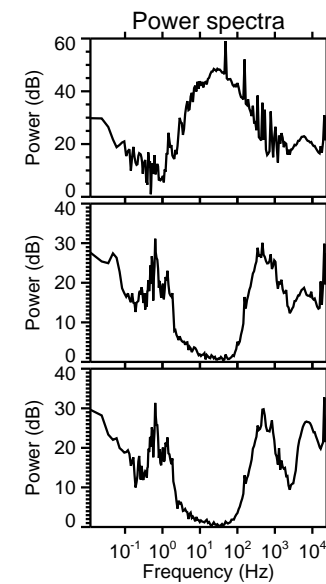
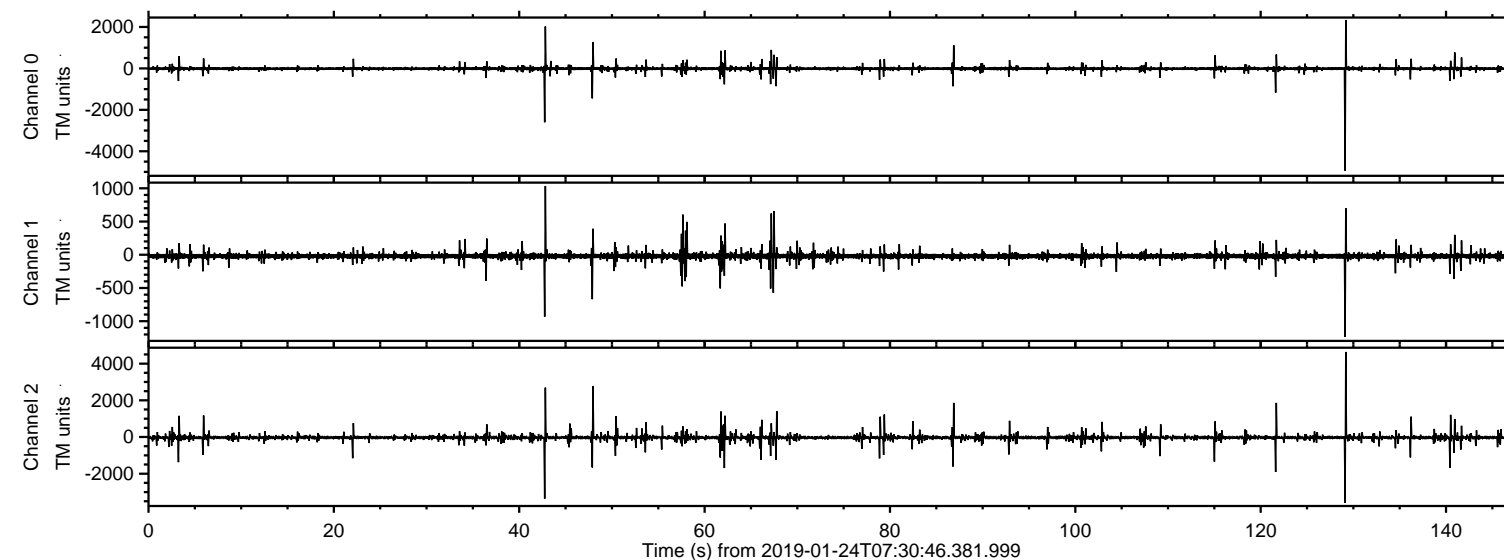


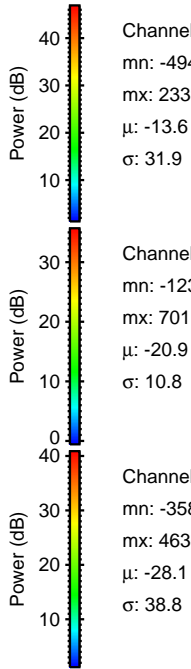
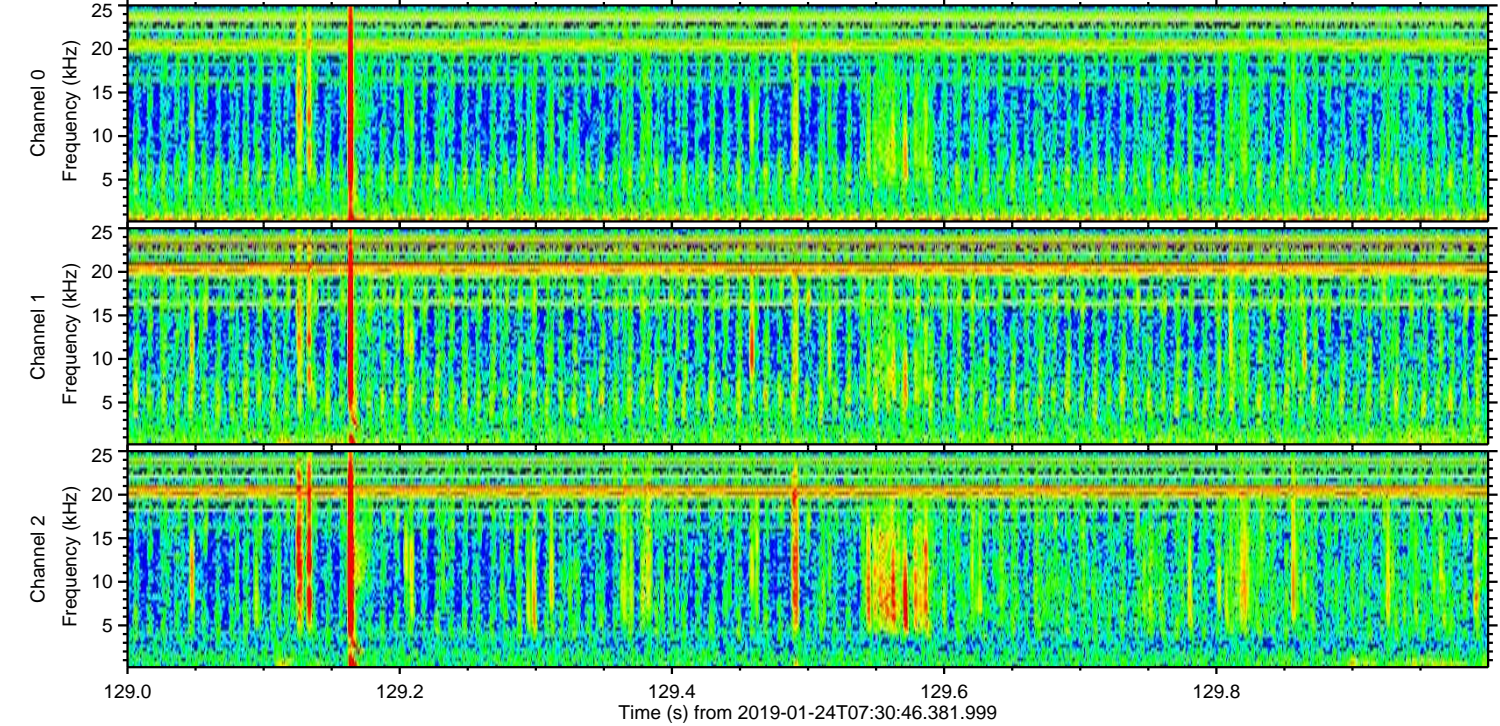
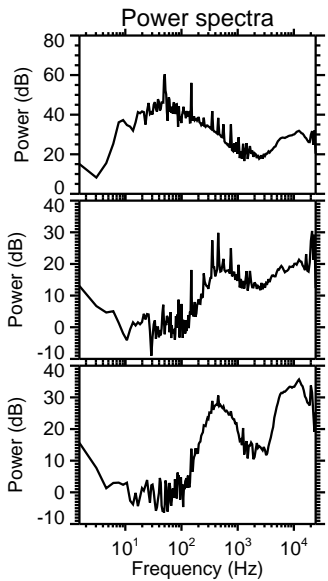
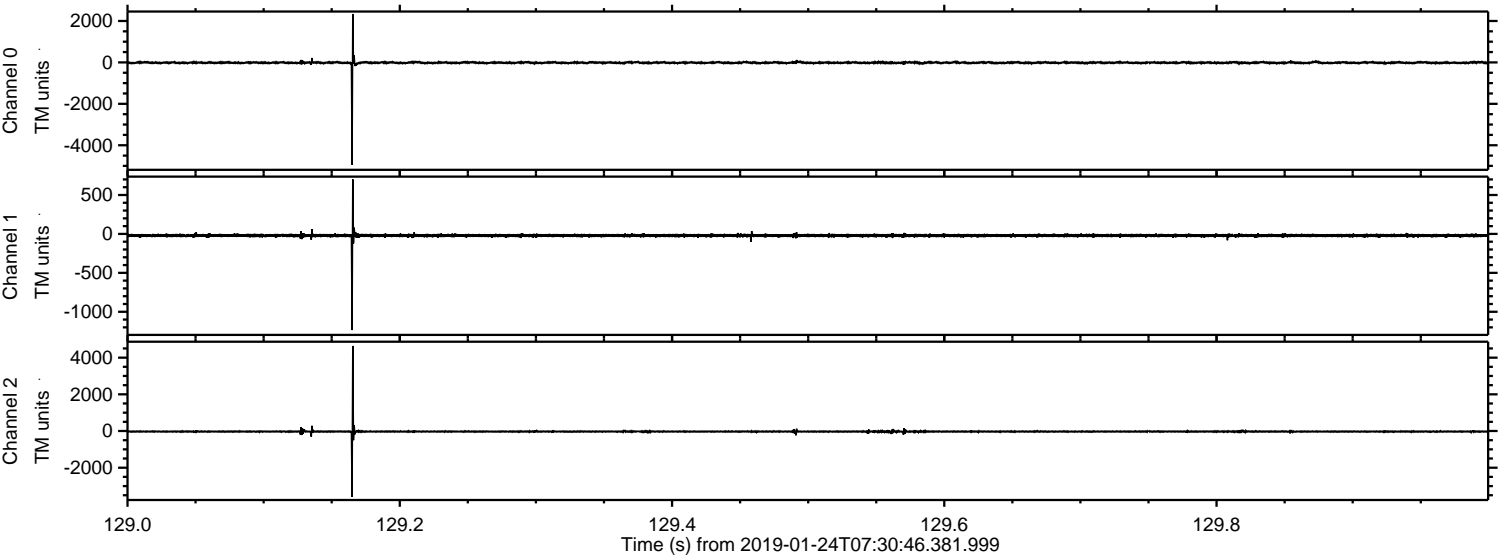
ELMAVAN 3D WAVEFORMS (Measured data sampled at 50 kHz) 51000 packets of 144 samples from 2019-01-24T07:30:46.381.999.

Processed Thu Jan 24 08:38:37 2019 by ELM ver.2012-10-06 from 001__elm20190124_073045__dat00.bin



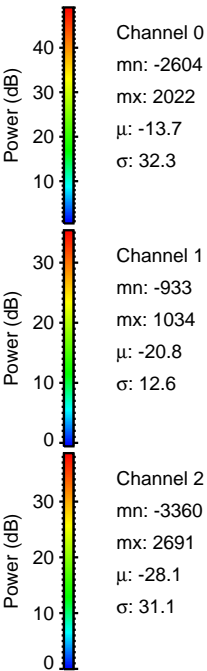
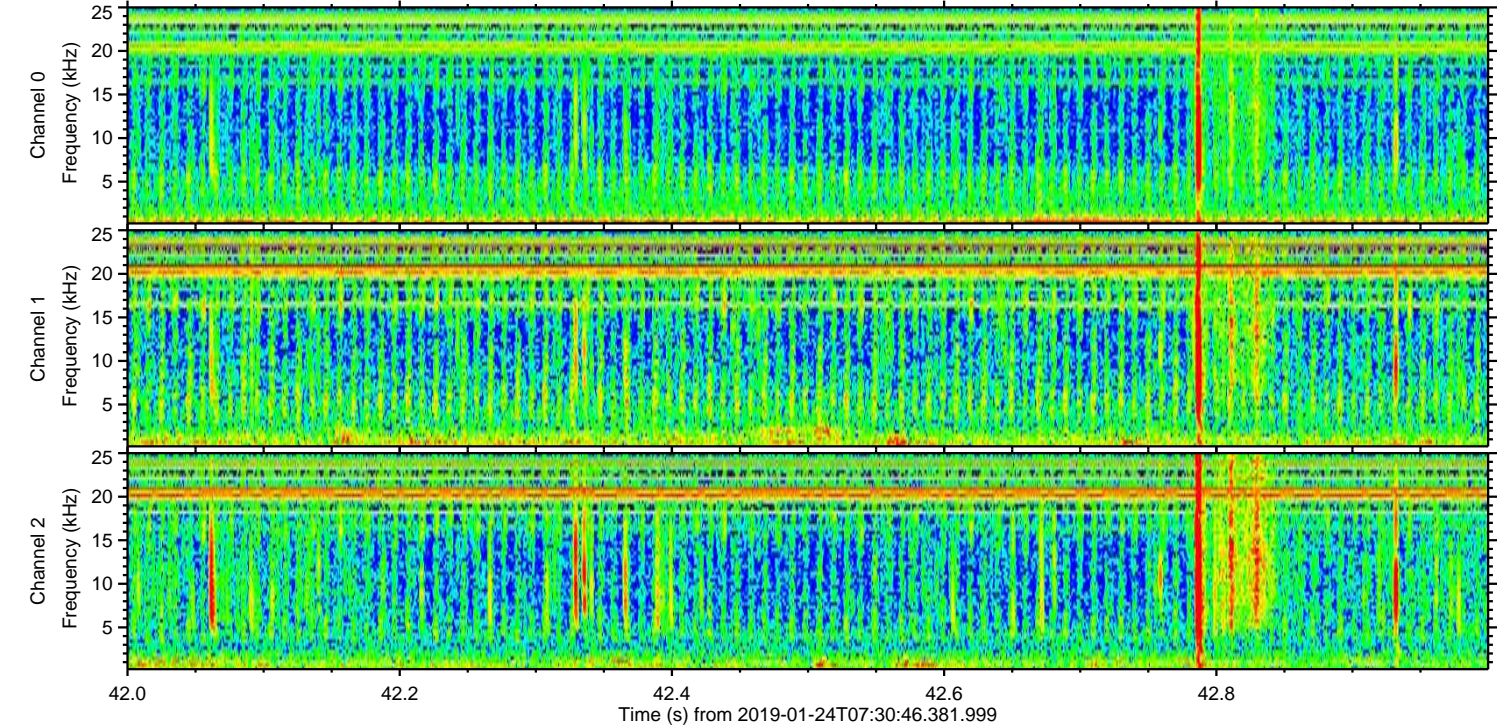
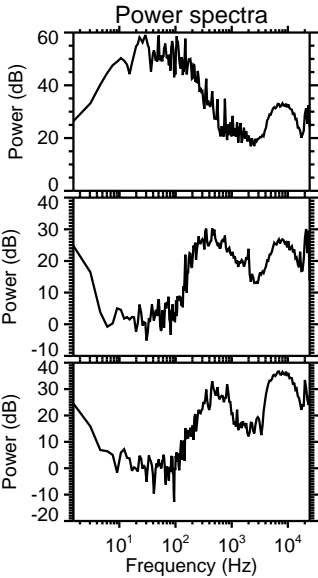
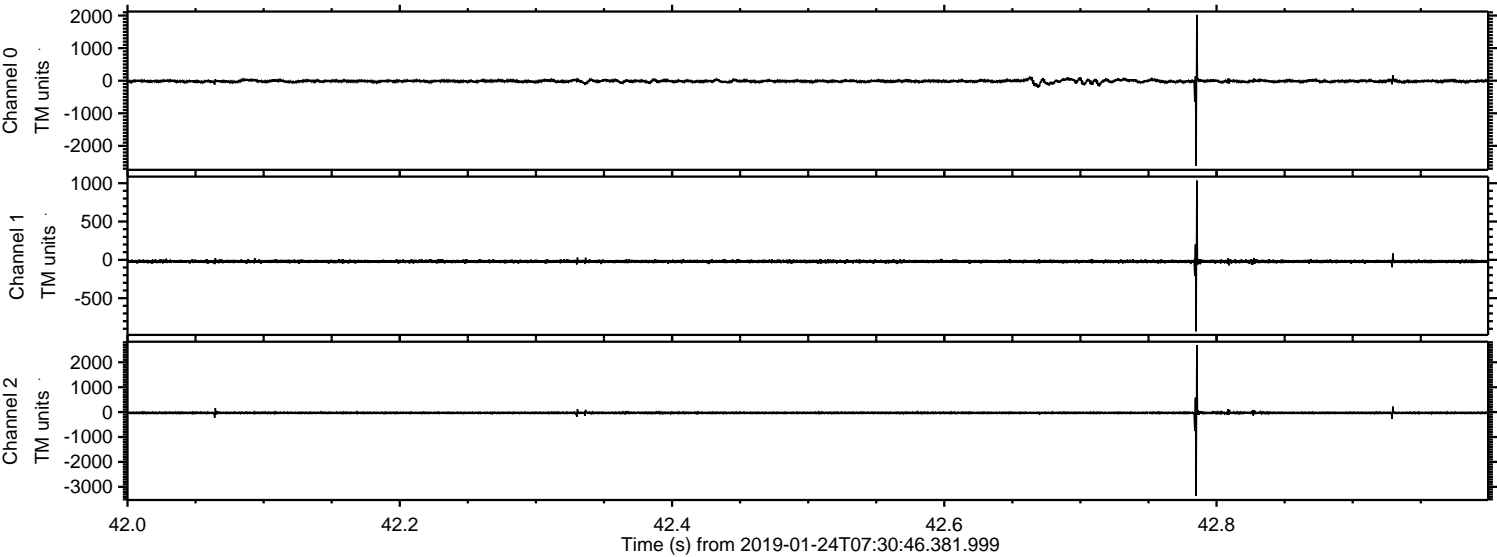
ELMAVAN 3D WAVEFORMS (Measured data sampled at 50 kHz) 51000 packets of 144 samples from 2019-01-24T07:30:46.381.999. Part 130/147

Processed Thu Jan 24 08:38:43 2019 by ELM ver.2012-10-06 from 001__elm20190124_073045__dat00.bin



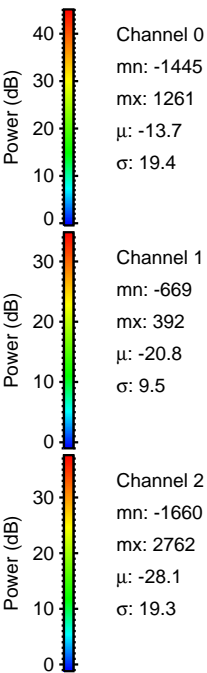
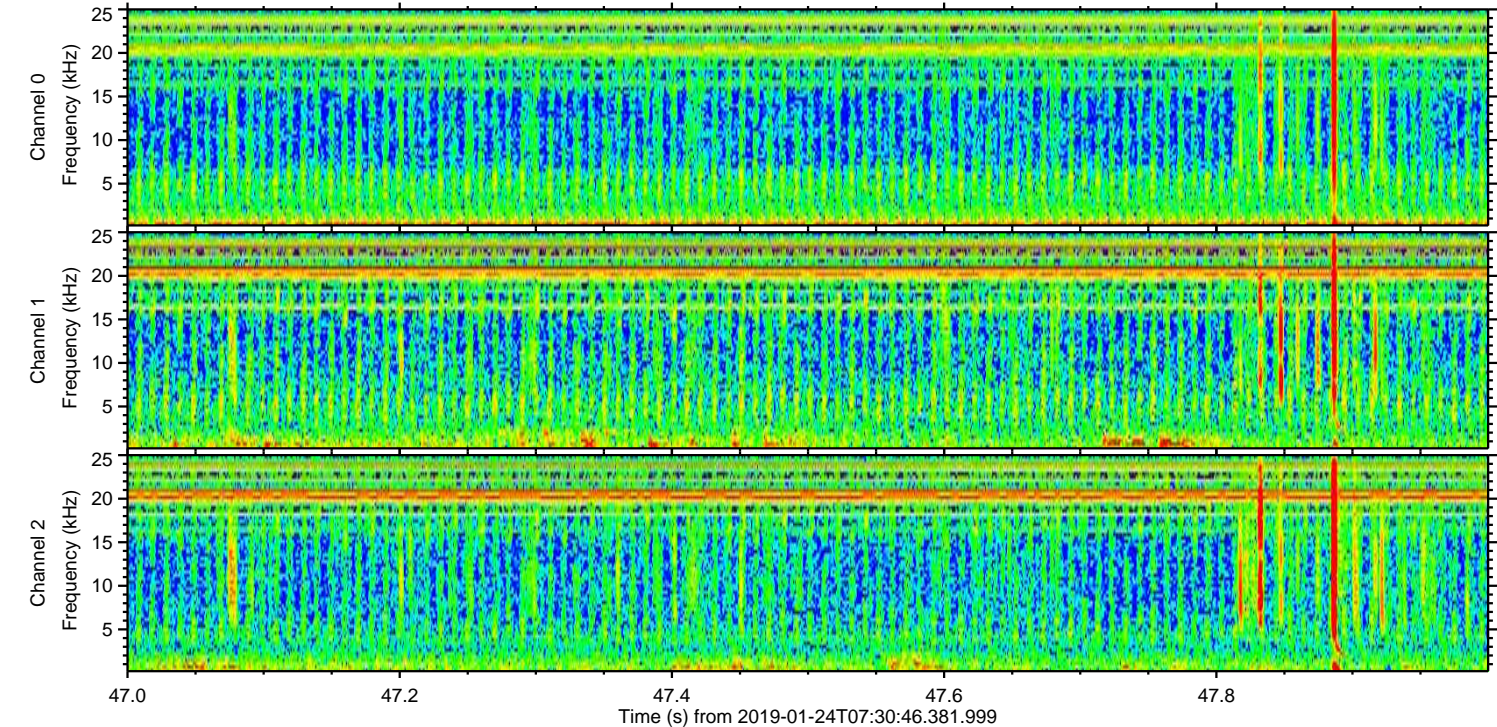
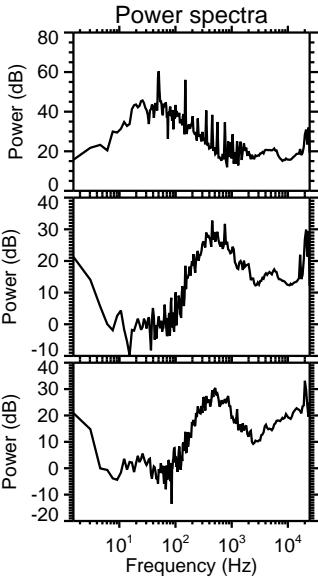
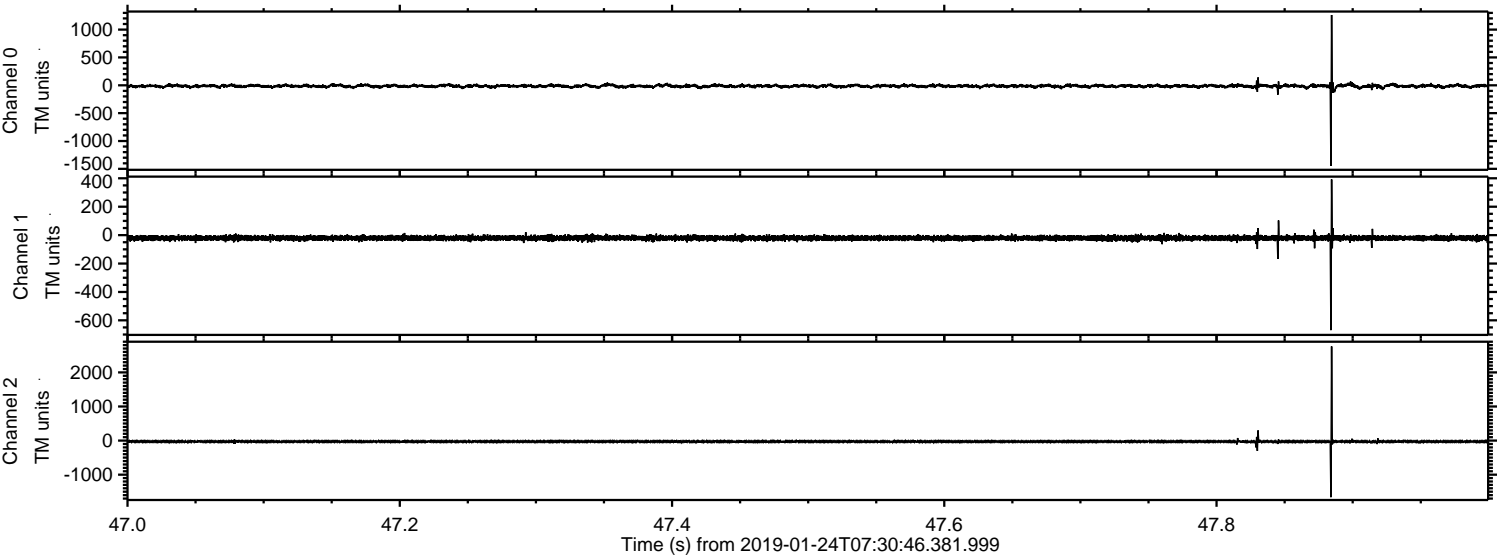
ELMAVAN 3D WAVEFORMS (Measured data sampled at 50 kHz) 51000 packets of 144 samples from 2019-01-24T07:30:46.381.999. Part 43/147

Processed Thu Jan 24 08:38:43 2019 by ELM ver.2012-10-06 from 001__elm20190124_073045__dat00.bin



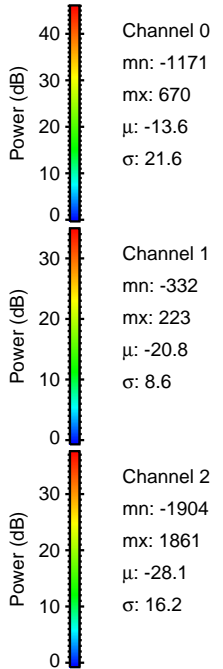
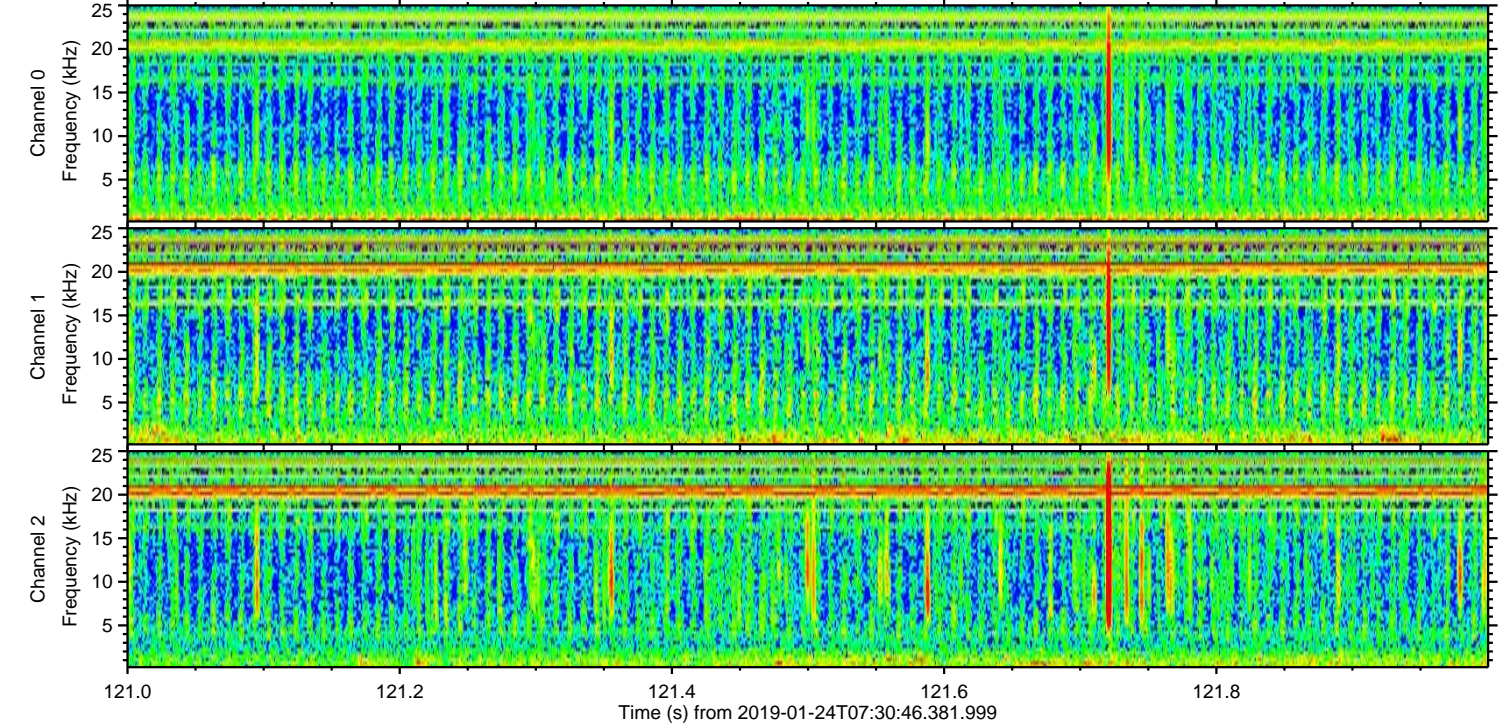
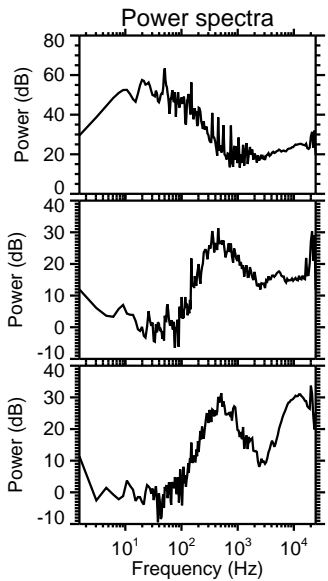
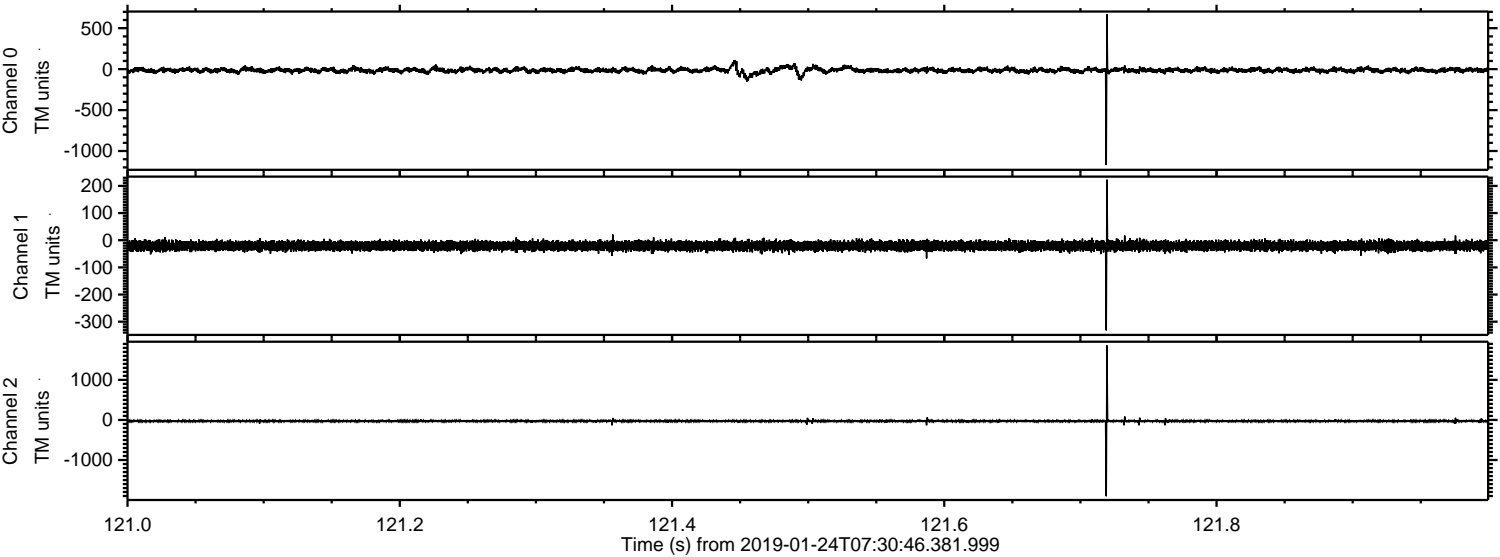
ELMAVAN 3D WAVEFORMS (Measured data sampled at 50 kHz) 51000 packets of 144 samples from 2019-01-24T07:30:46.381.999. Part 48/147

Processed Thu Jan 24 08:38:44 2019 by ELM ver.2012-10-06 from 001__elm20190124_073045__dat00.bin

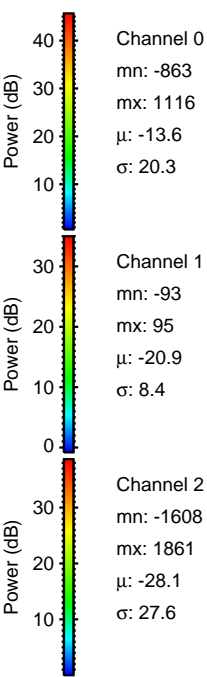
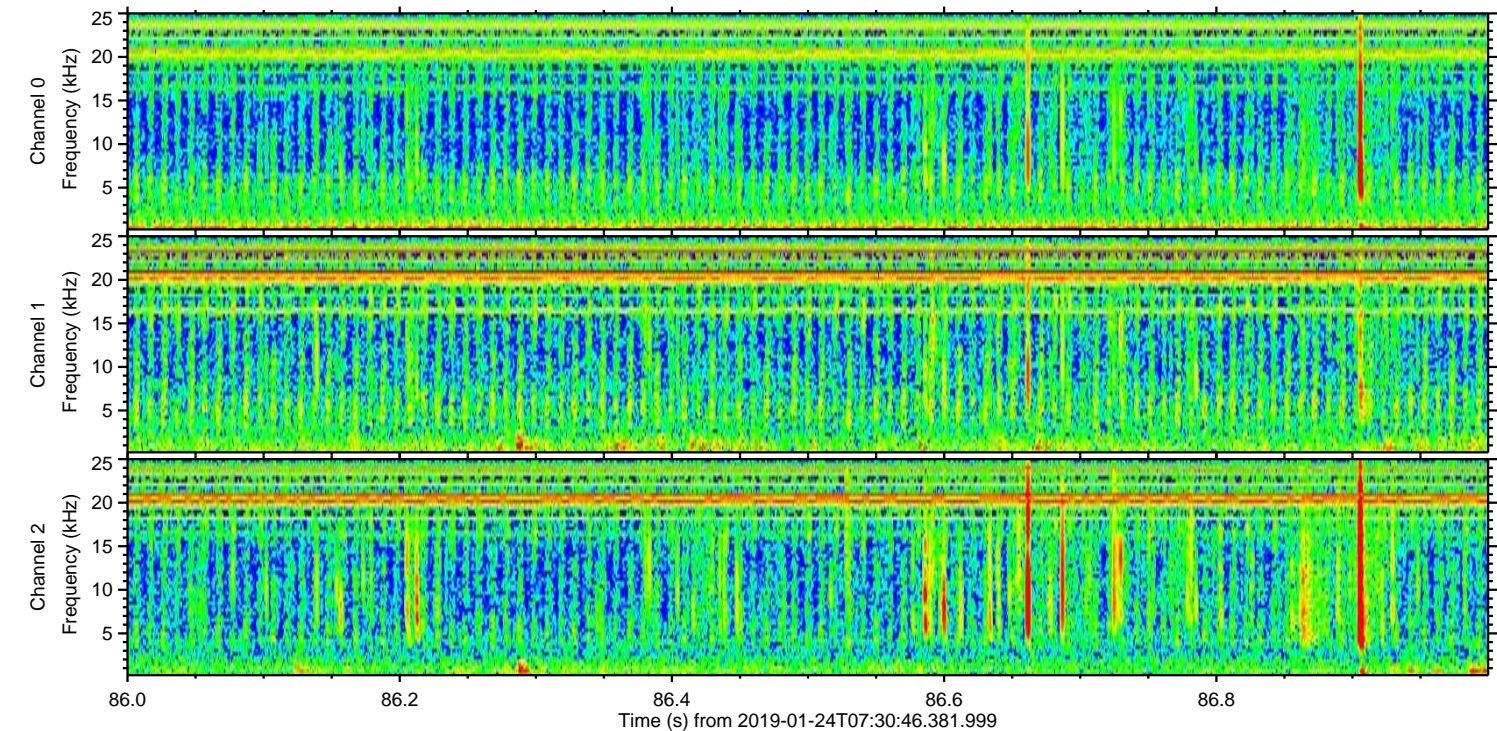
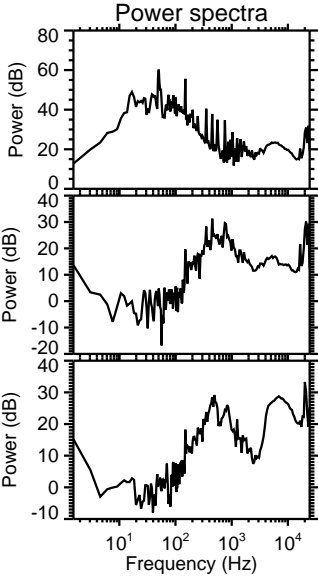
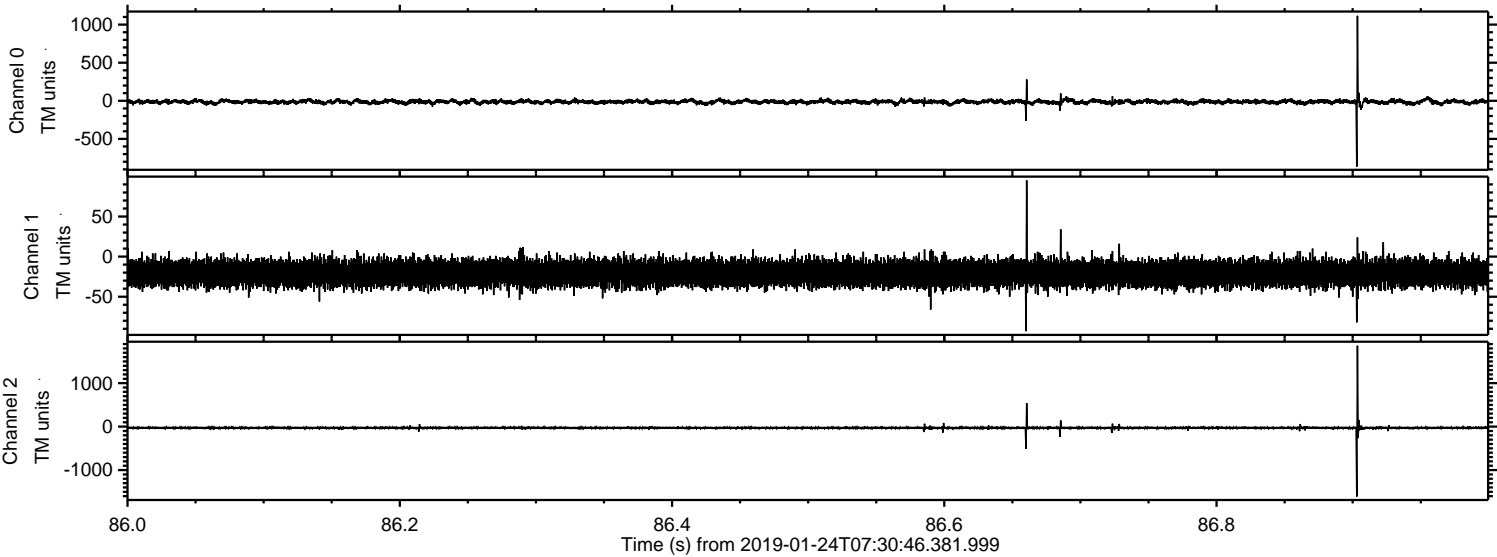


ELMAVAN 3D WAVEFORMS (Measured data sampled at 50 kHz) 51000 packets of 144 samples from 2019-01-24T07:30:46.381.999. Part 122/147

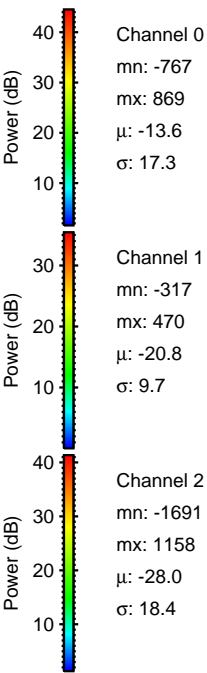
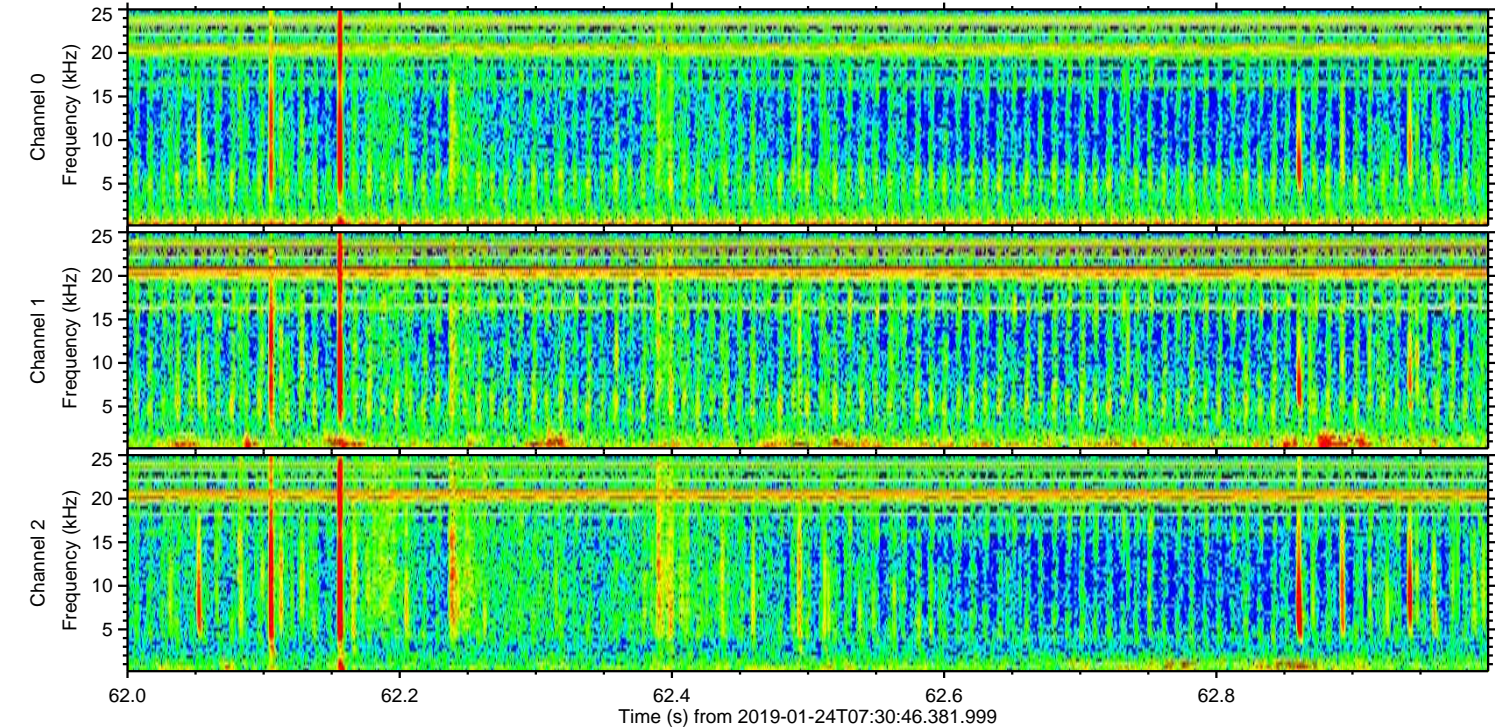
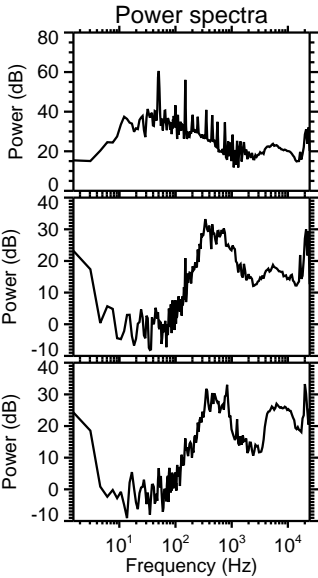
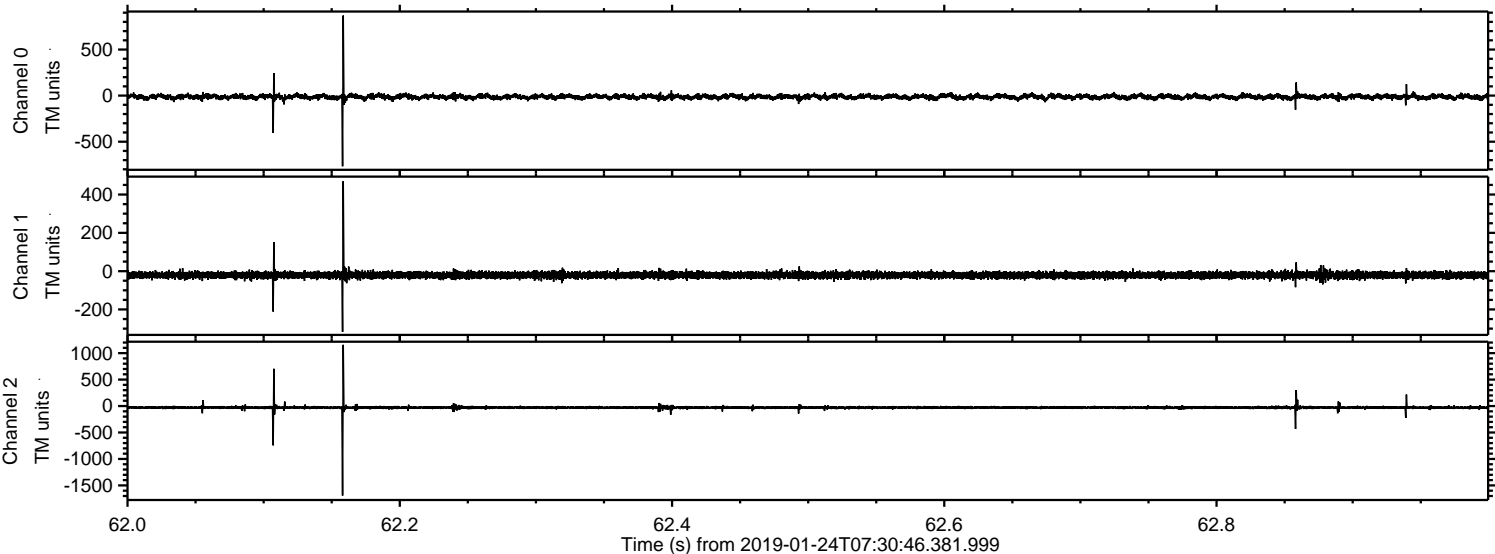
Processed Thu Jan 24 08:38:45 2019 by ELM ver.2012-10-06 from 001__elm20190124_073045__dat00.bin



Processed Thu Jan 24 08:38:46 2019 by ELM ver.2012-10-06 from 001__elm20190124_073045__dat00.bin

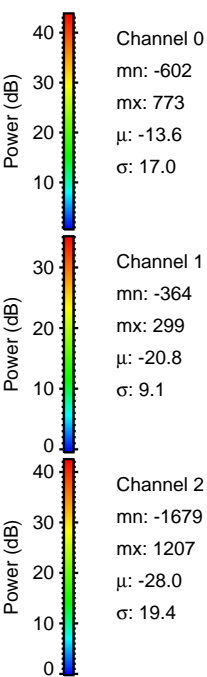
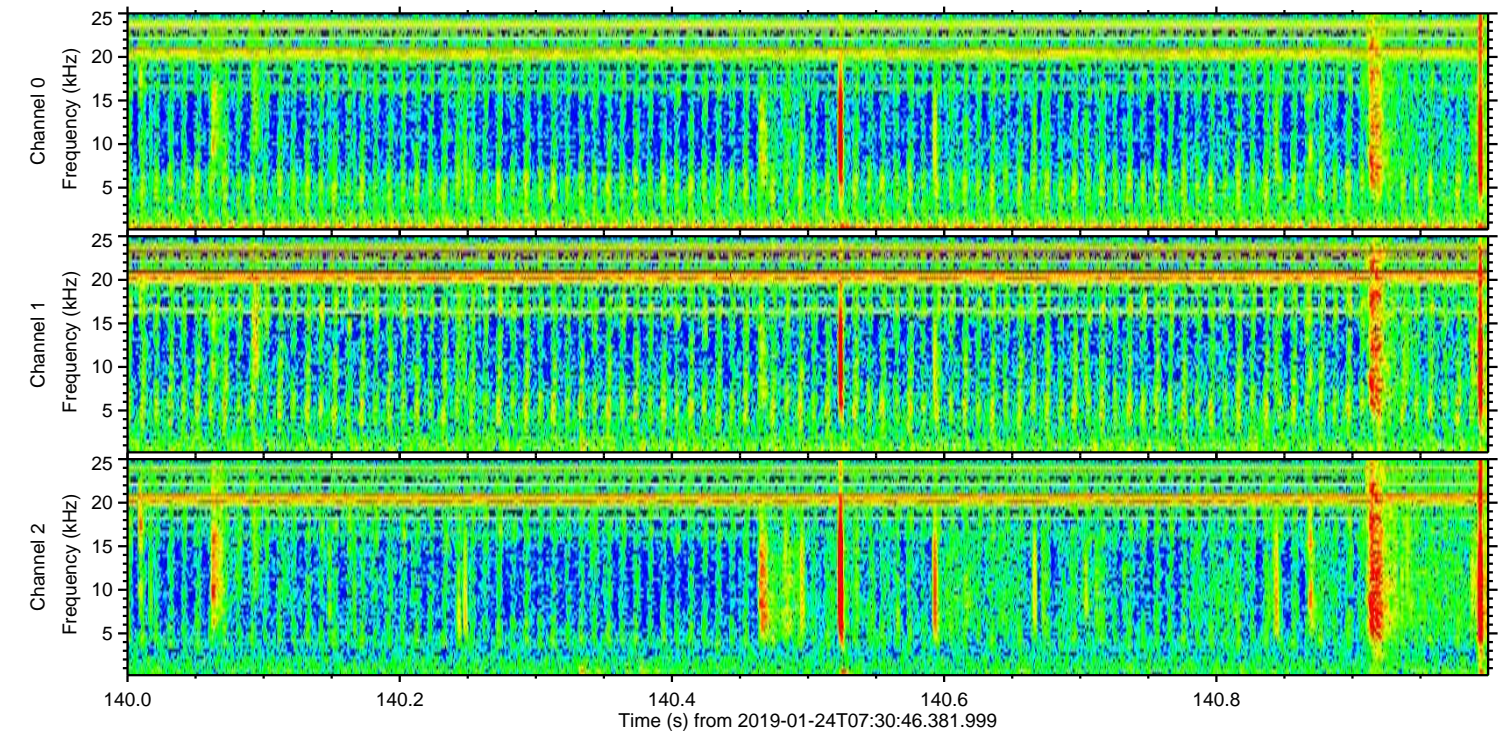
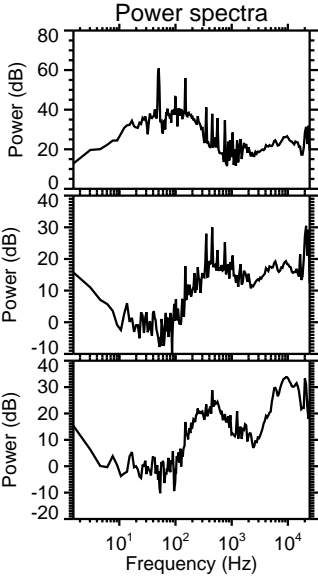
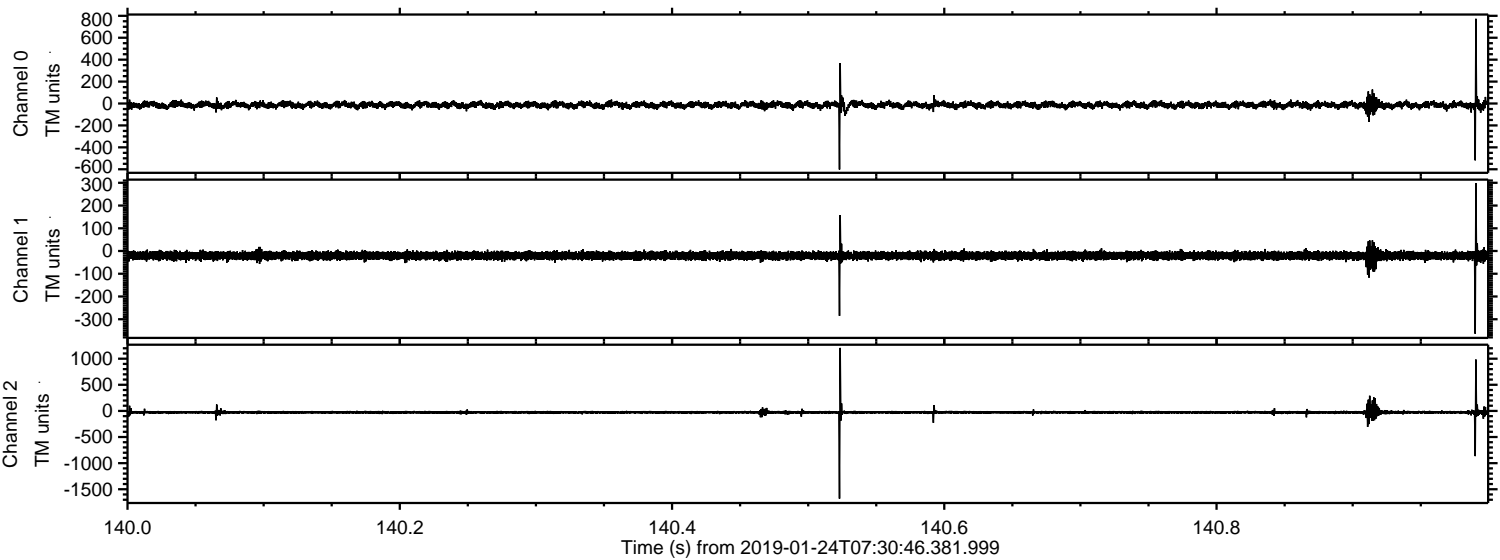


Processed Thu Jan 24 08:38:46 2019 by ELM ver.2012-10-06 from 001__elm20190124_073045__dat00.bin



ELMAVAN 3D WAVEFORMS (Measured data sampled at 50 kHz) 51000 packets of 144 samples from 2019-01-24T07:30:46.381.999. Part 141/147

Processed Thu Jan 24 08:38:47 2019 by ELM ver.2012-10-06 from 001__elm20190124_073045__dat00.bin

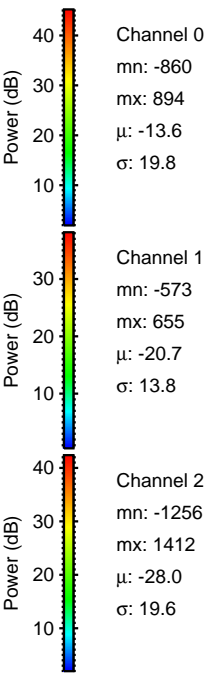
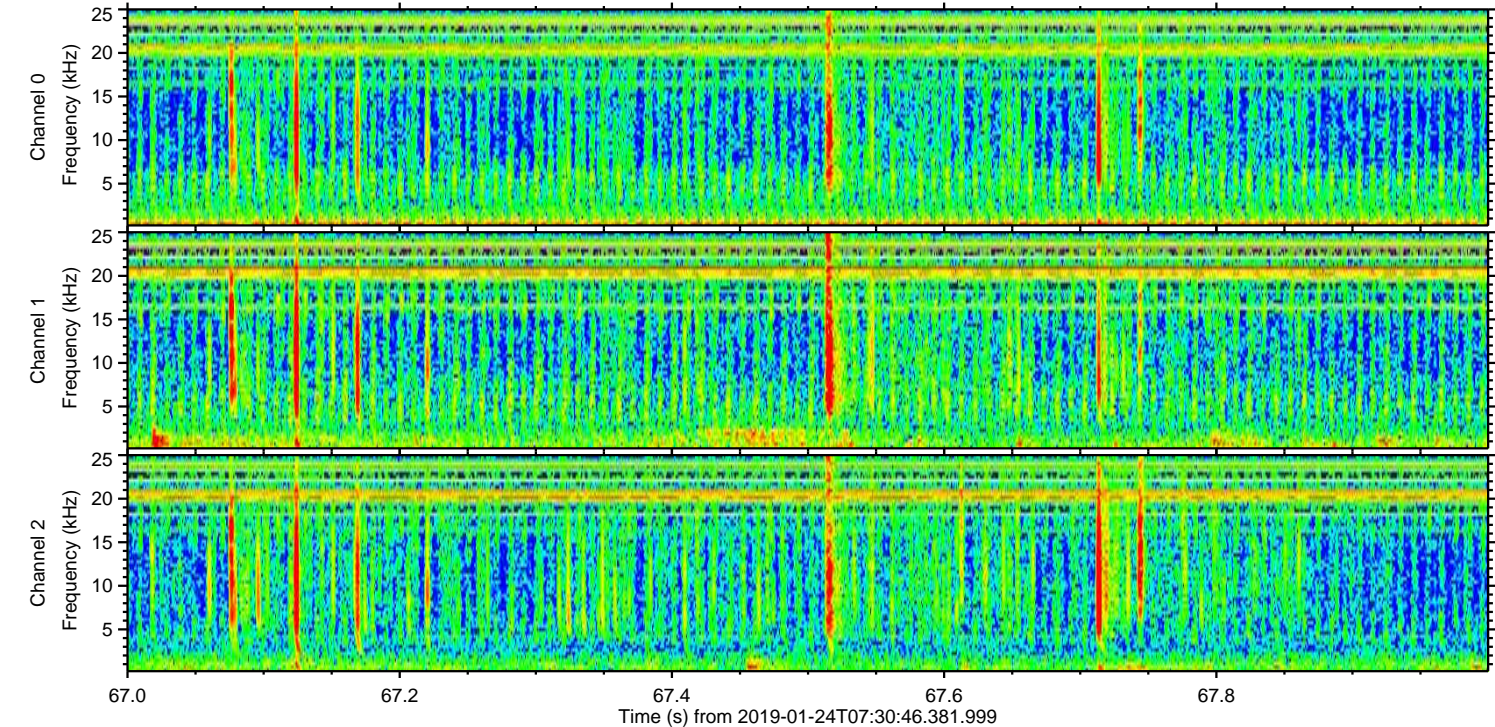
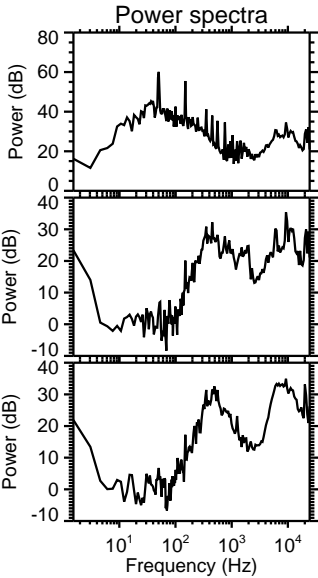
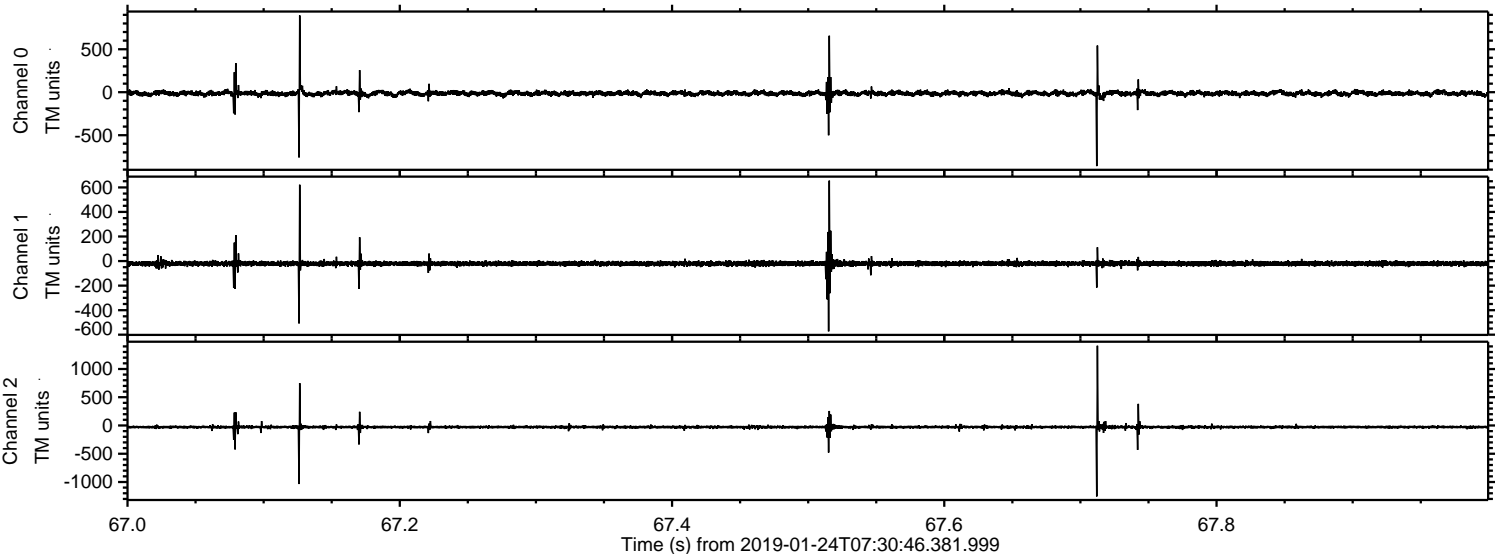


Channel 0
mn: -602
mx: 773
 μ : -13.6
 σ : 17.0

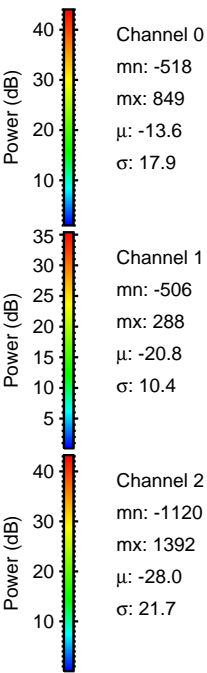
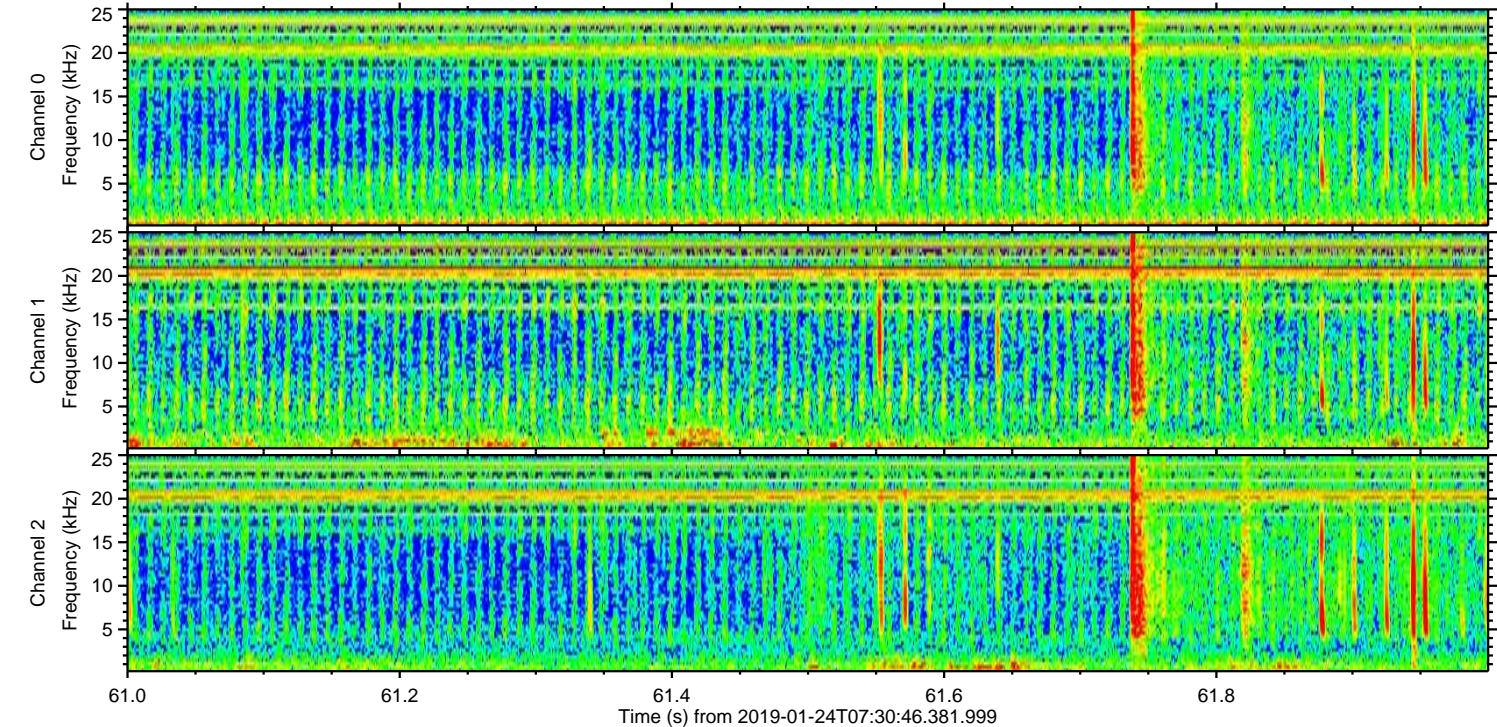
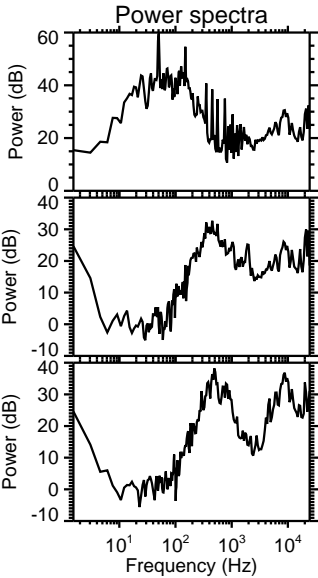
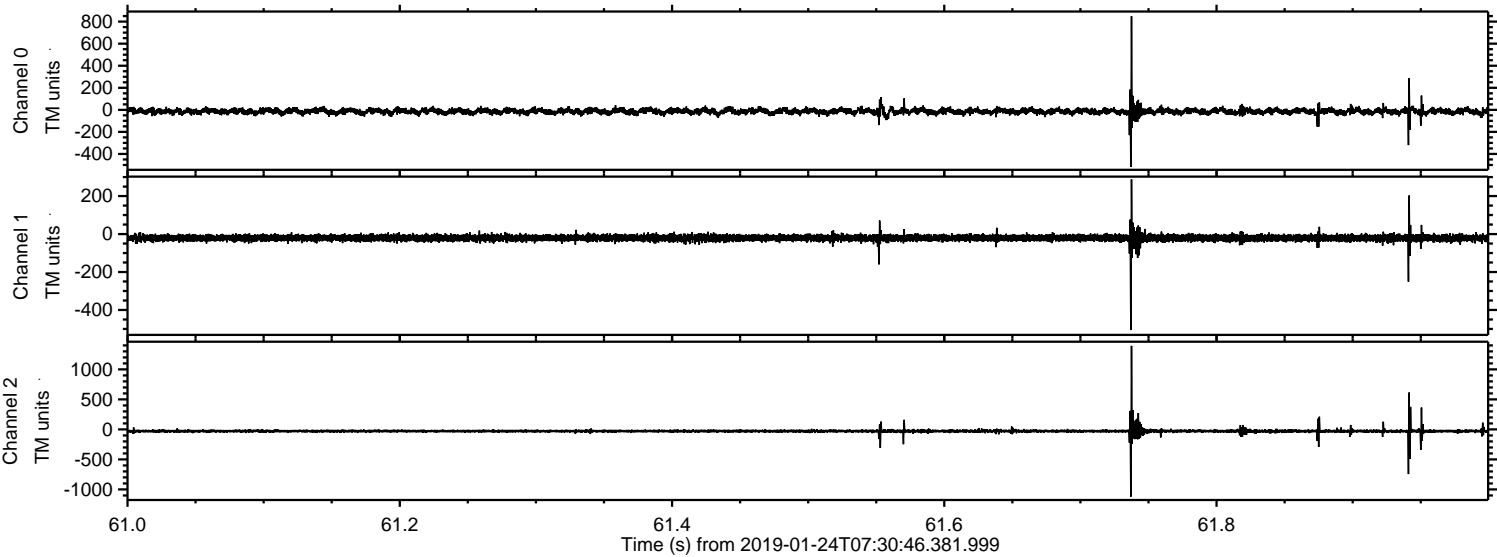
Channel 1
mn: -364
mx: 299
 μ : -20.8
 σ : 9.1

Channel 2
mn: -1679
mx: 1207
 μ : -28.0
 σ : 19.4

Processed Thu Jan 24 08:38:48 2019 by ELM ver.2012-10-06 from 001__elm20190124_073045__dat00.bin



Processed Thu Jan 24 08:38:48 2019 by ELM ver.2012-10-06 from 001__elm20190124_073045__dat00.bin



Channel 0
mn: -518
mx: 849
 μ : -13.6
 σ : 17.9

Channel 1
mn: -506
mx: 288
 μ : -20.8
 σ : 10.4

Channel 2
mn: -1120
mx: 1392
 μ : -28.0
 σ : 21.7

Processed Thu Jan 24 08:38:49 2019 by ELM ver.2012-10-06 from 001__elm20190124_073045__dat00.bin

