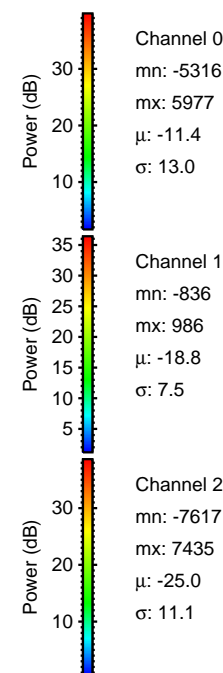
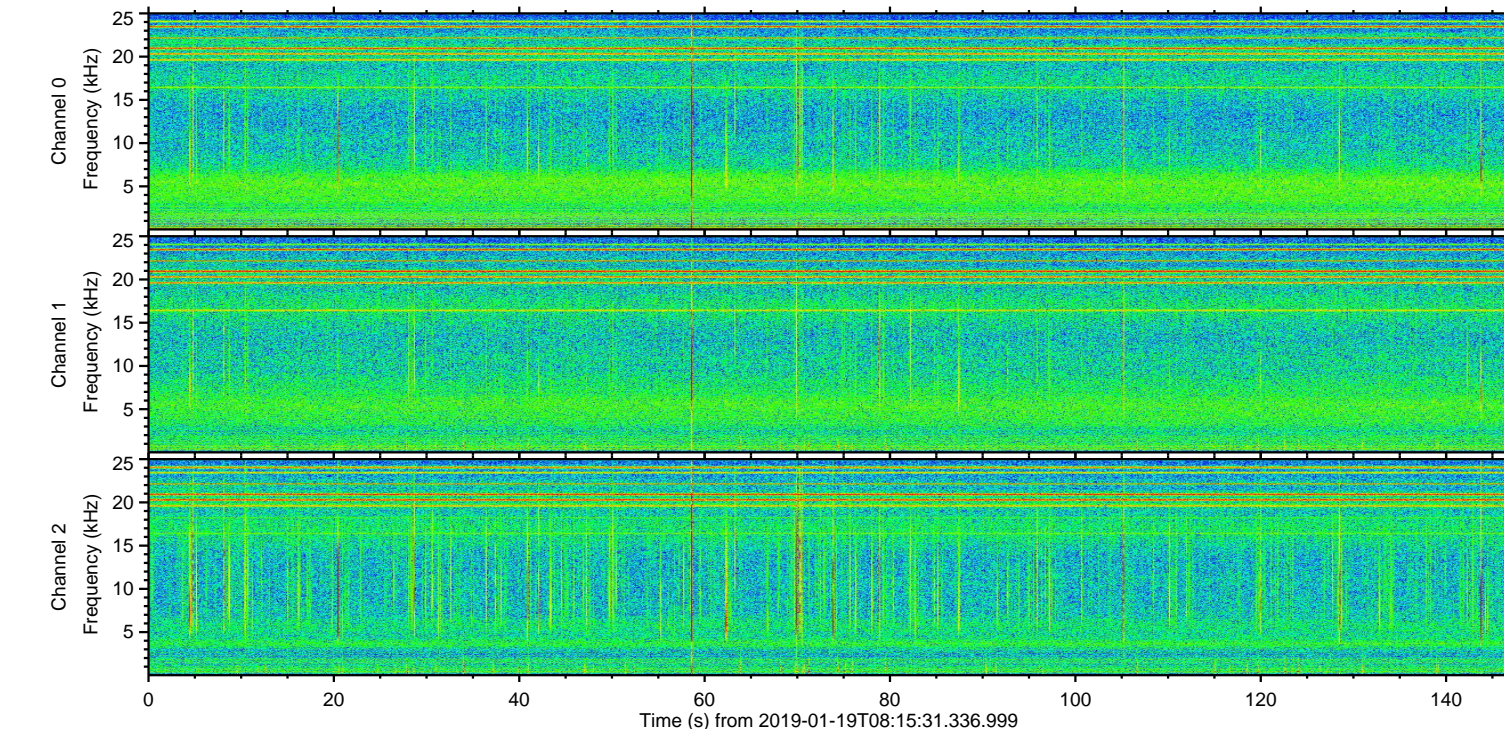
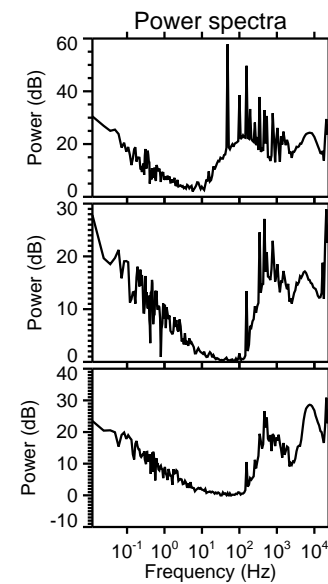
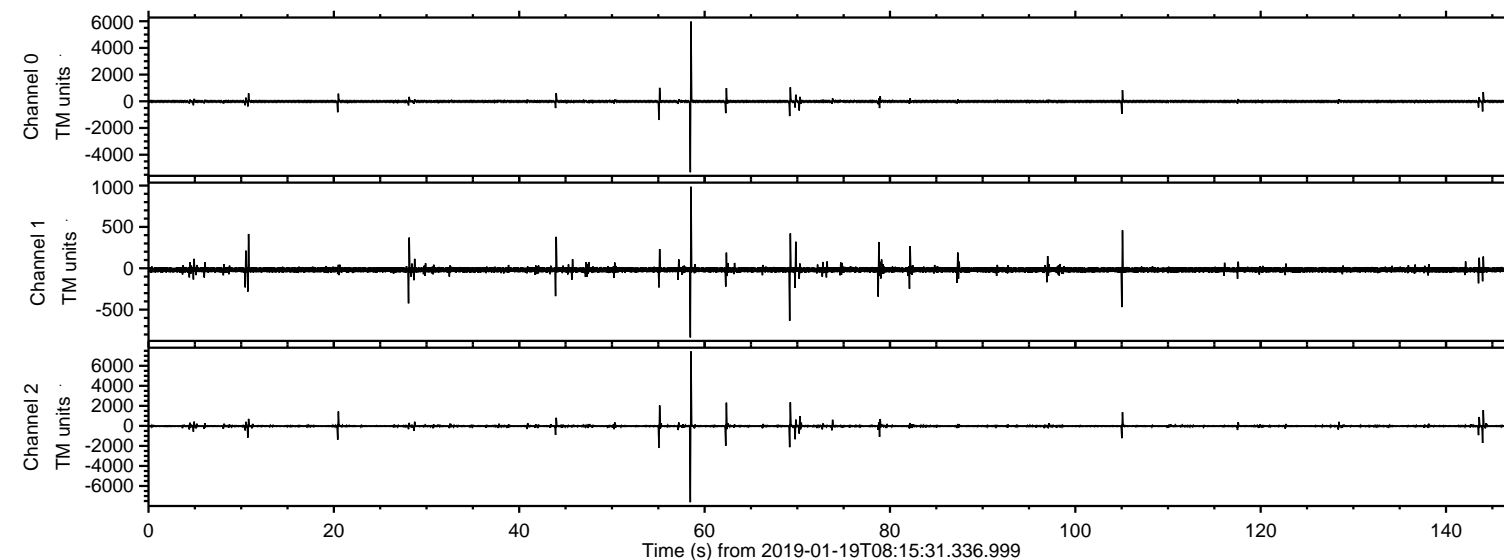
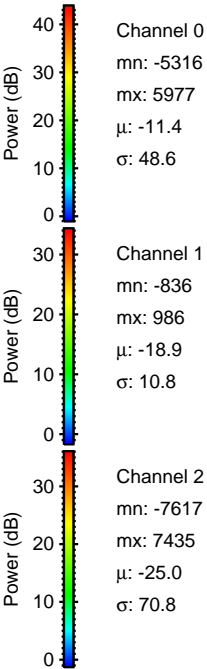
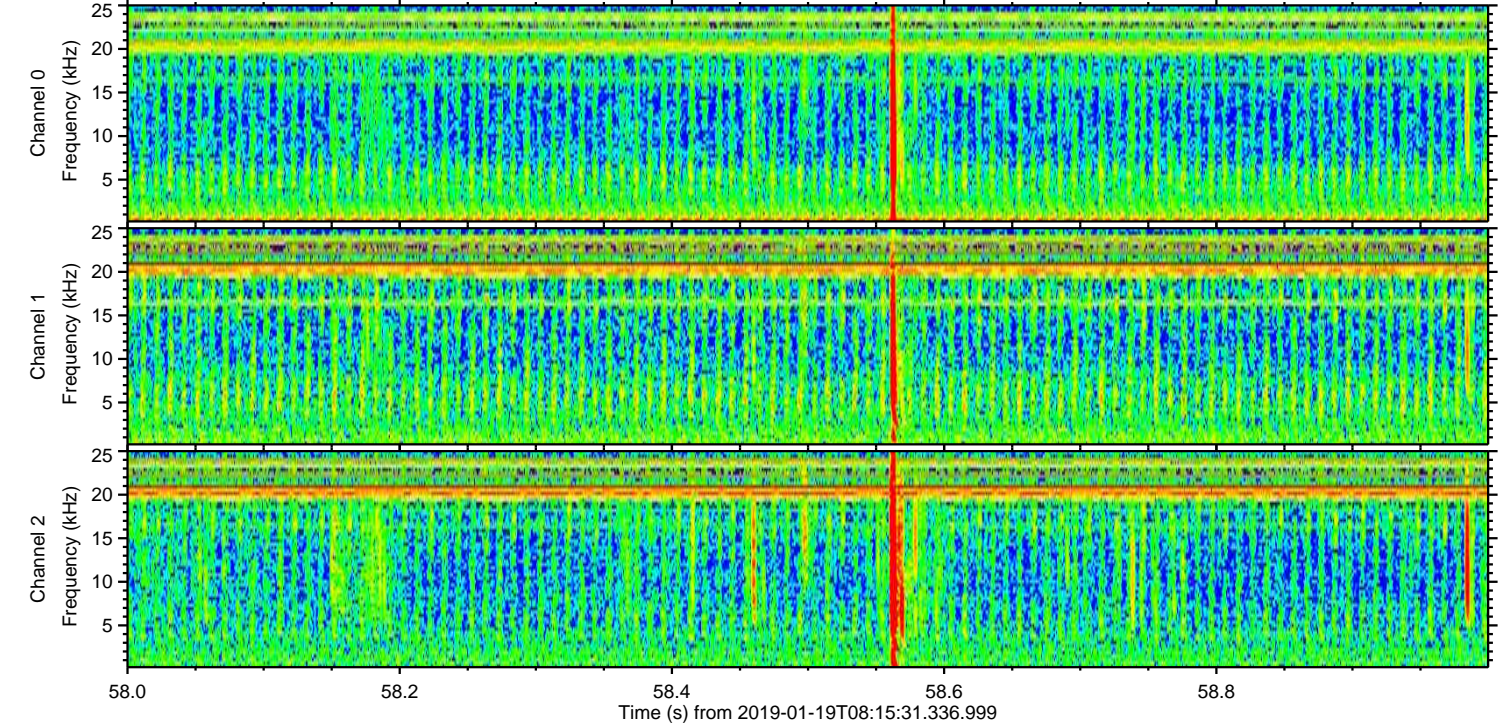
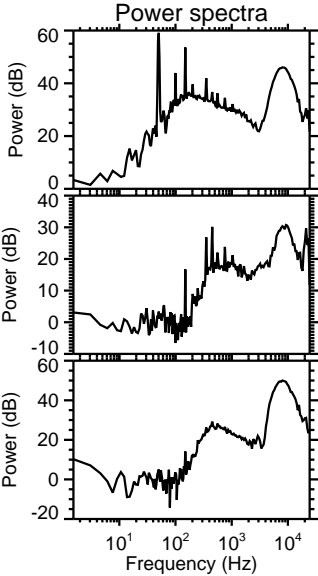
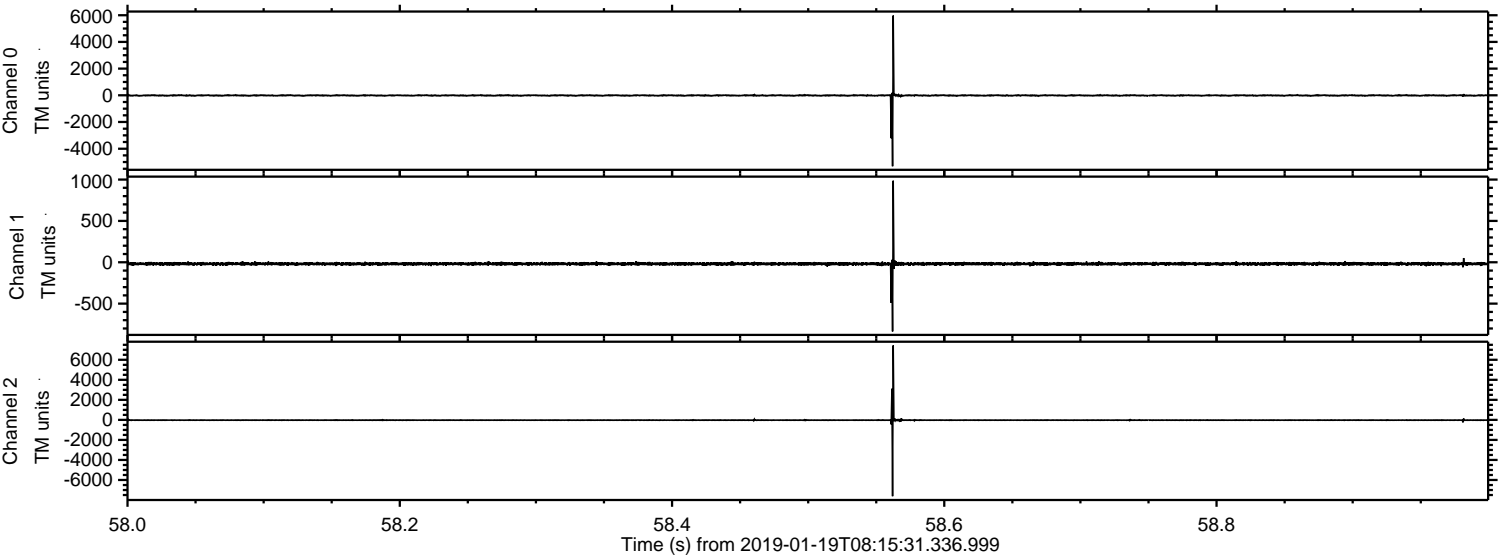


ELMAVAN 3D WAVEFORMS (Measured data sampled at 50 kHz) 51000 packets of 144 samples from 2019-01-19T08:15:31.336.999.

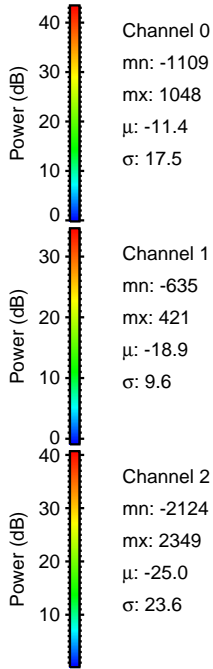
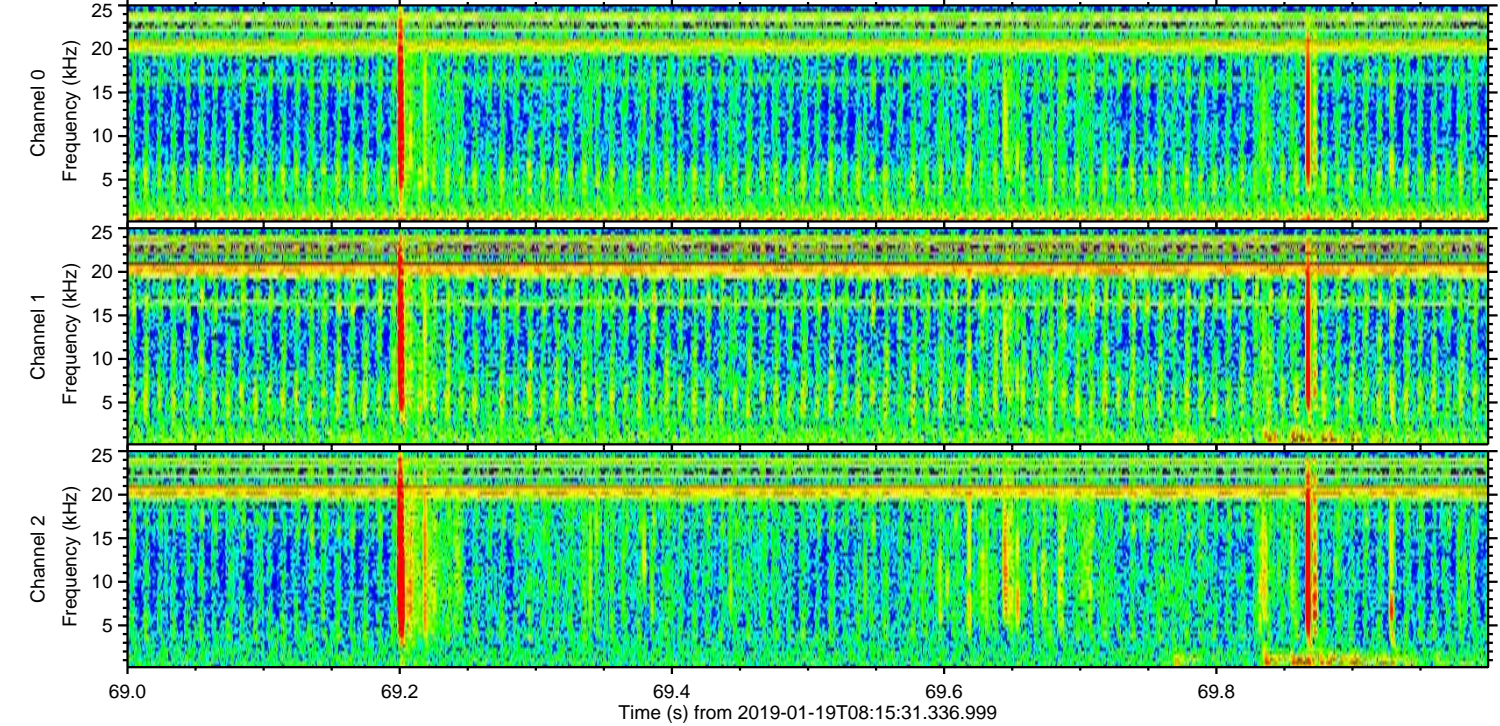
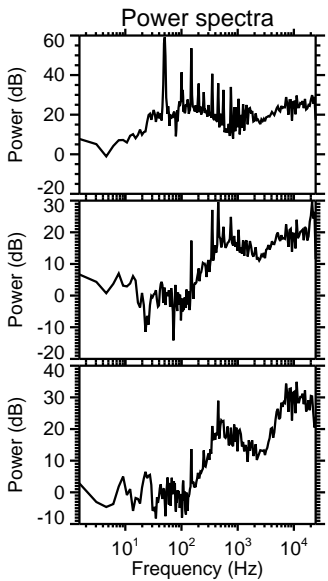
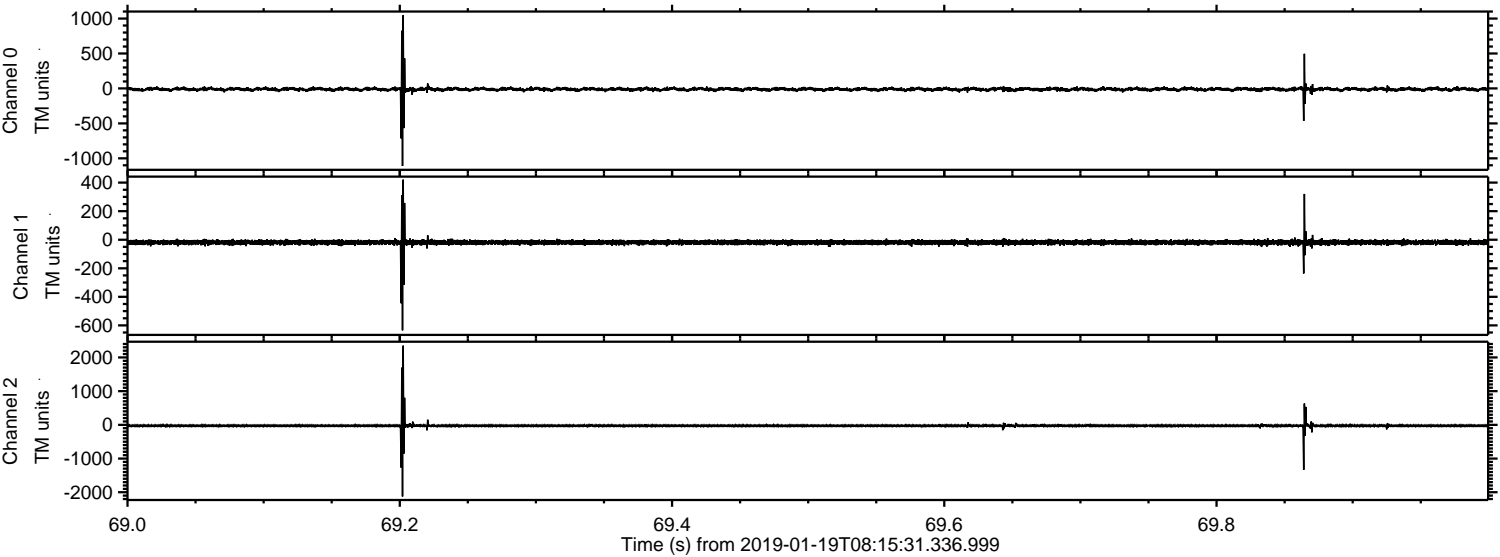
Processed Sat Jan 19 09:23:02 2019 by ELM ver.2012-10-06 from 001__elm20190119_081530__dat00.bin



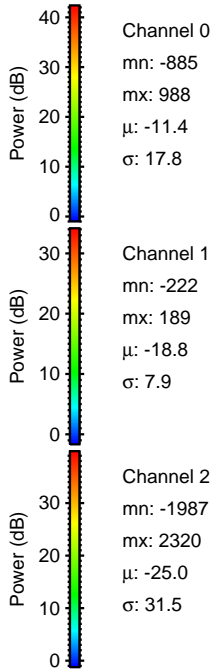
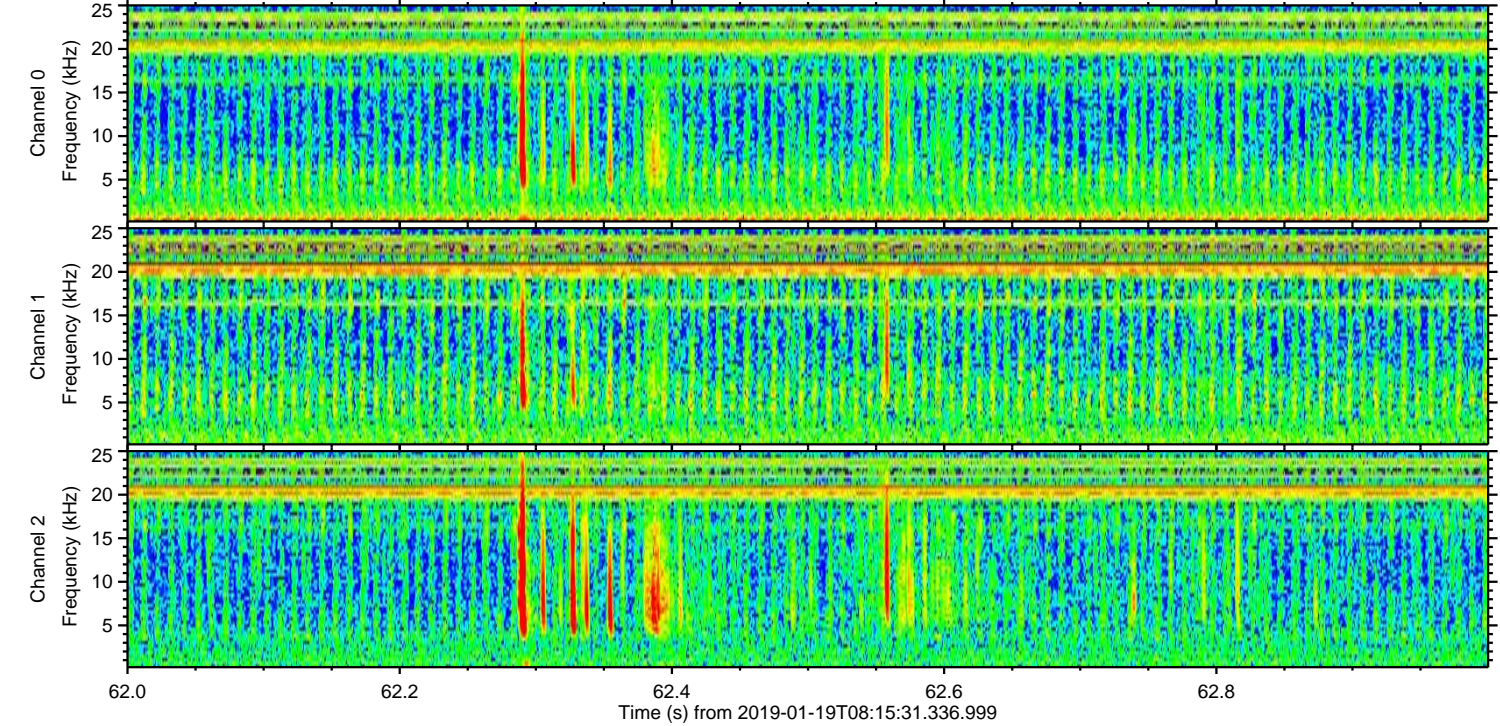
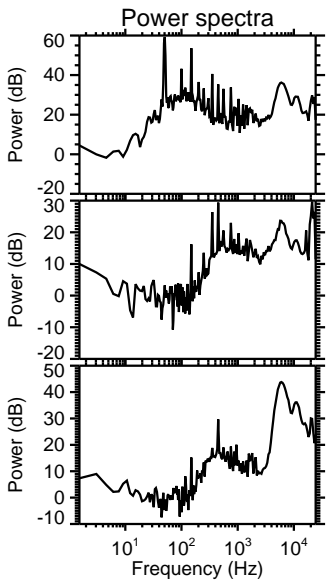
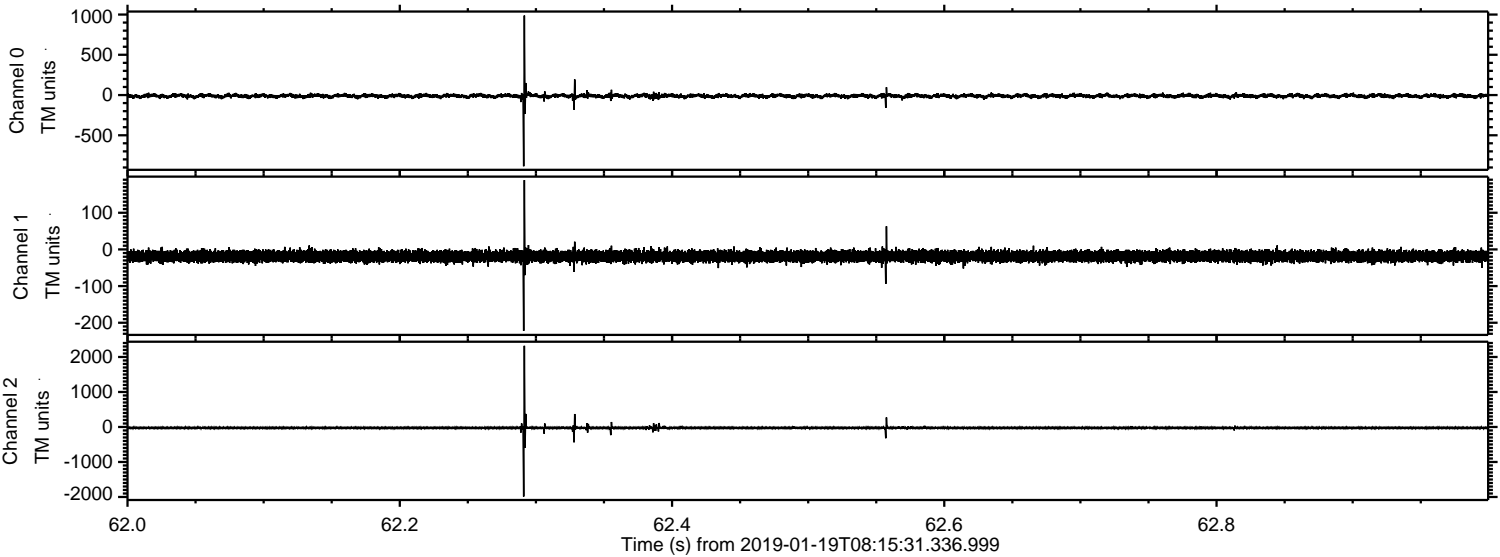
Processed Sat Jan 19 09:23:08 2019 by ELM ver.2012-10-06 from 001__elm20190119_081530__dat00.bin



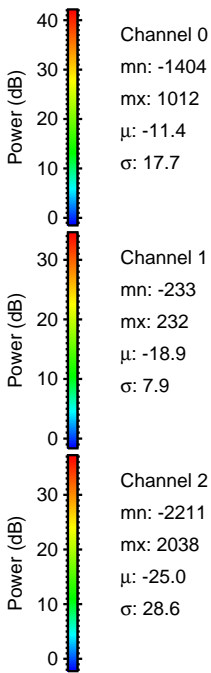
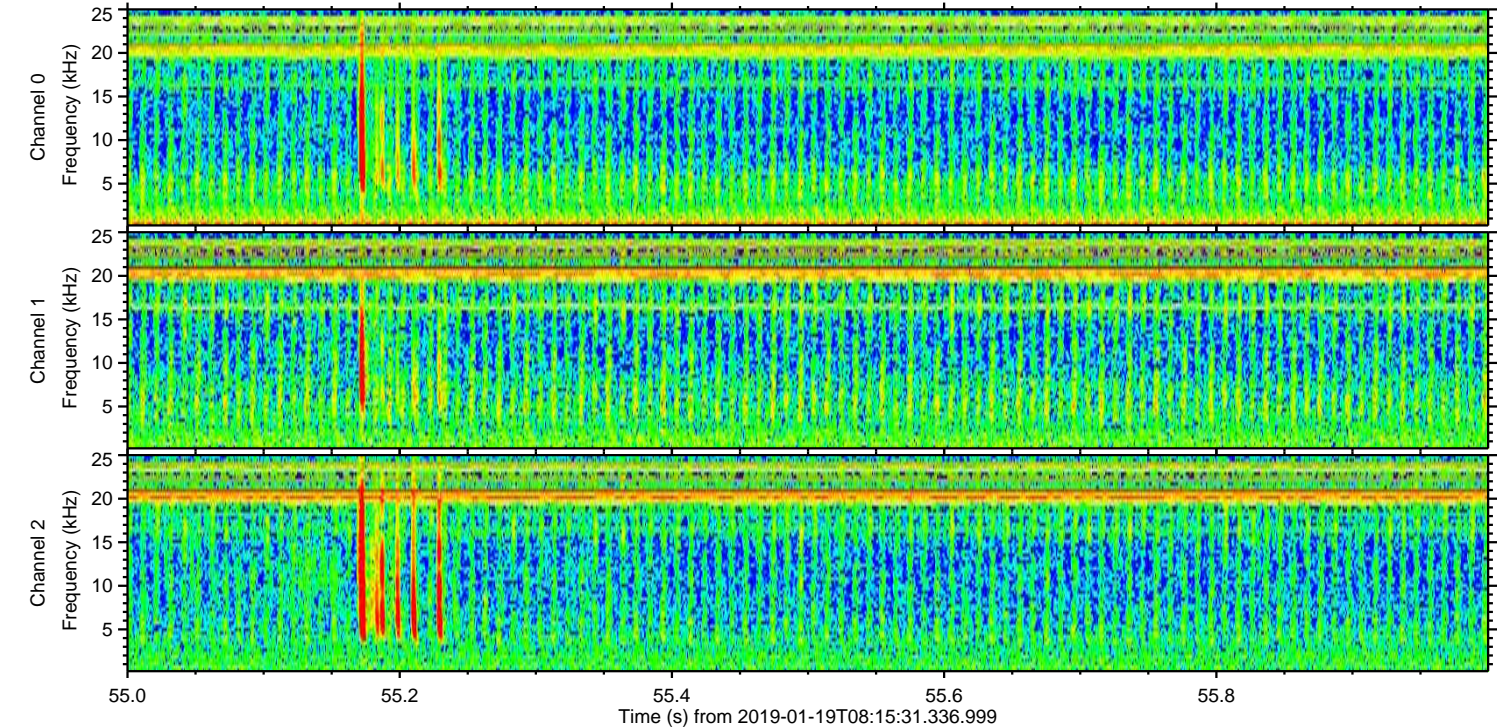
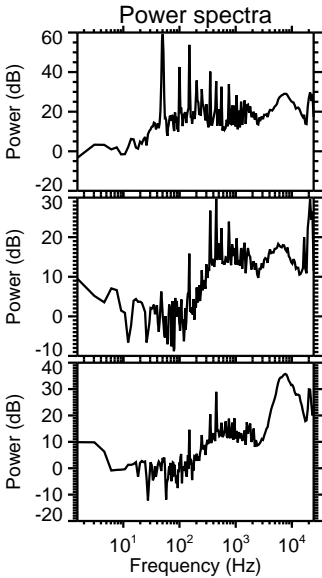
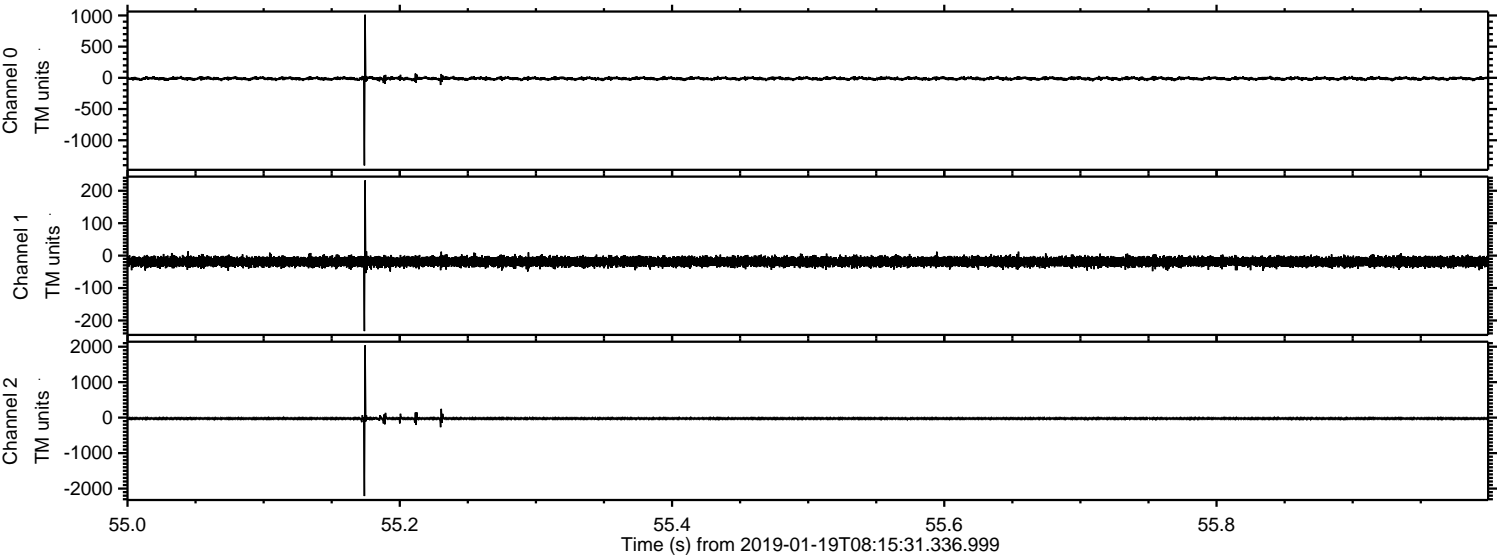
Processed Sat Jan 19 09:23:09 2019 by ELM ver.2012-10-06 from 001__elm20190119_081530__dat00.bin



Processed Sat Jan 19 09:23:09 2019 by ELM ver.2012-10-06 from 001__elm20190119_081530__dat00.bin



Processed Sat Jan 19 09:23:10 2019 by ELM ver.2012-10-06 from 001__elm20190119_081530__dat00.bin



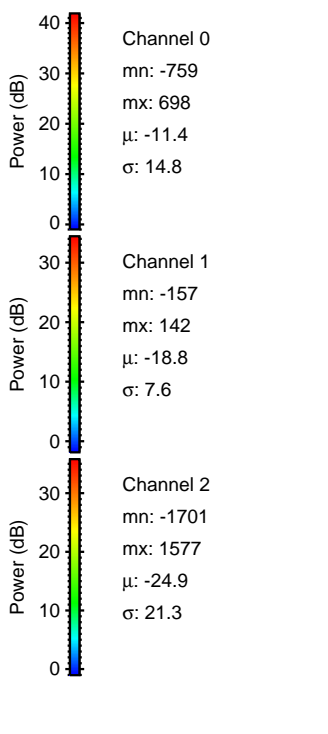
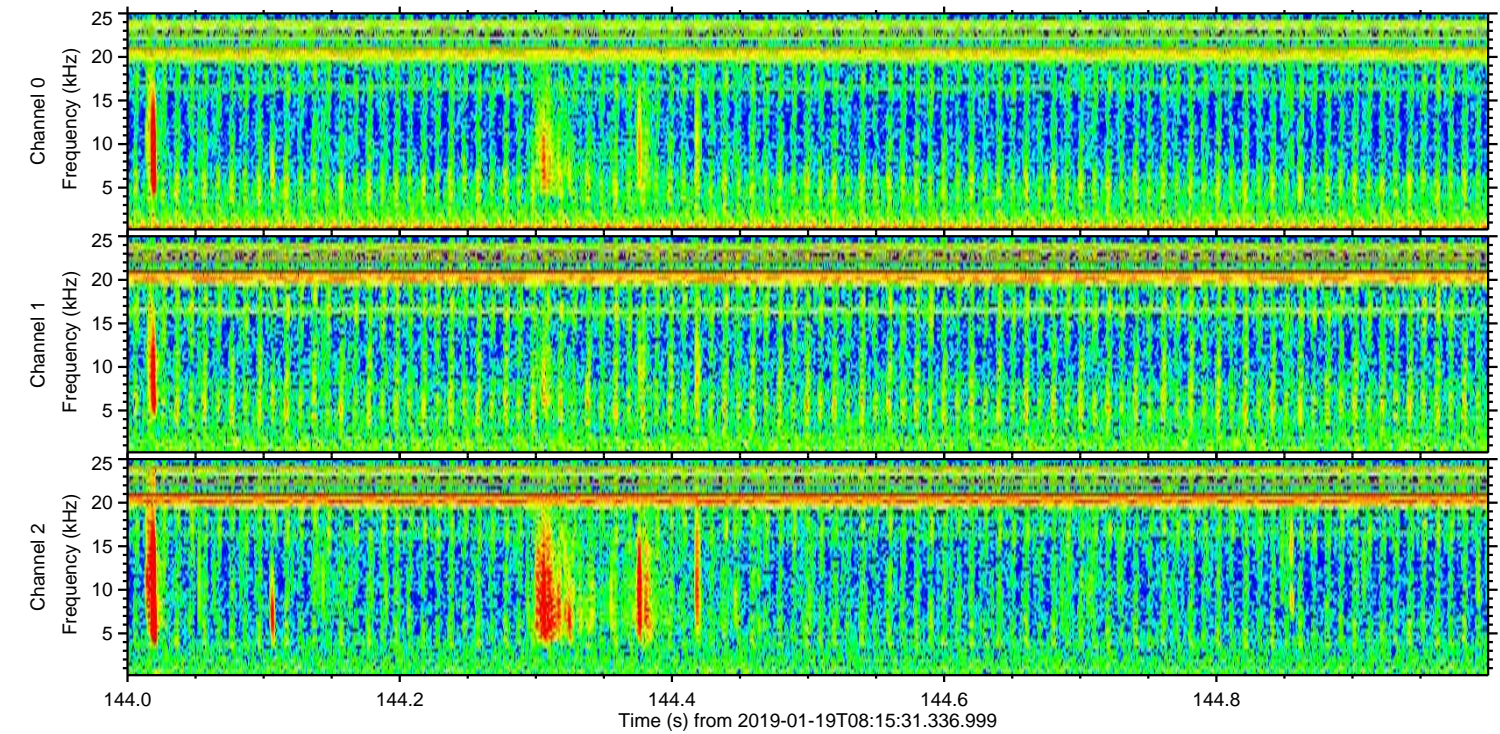
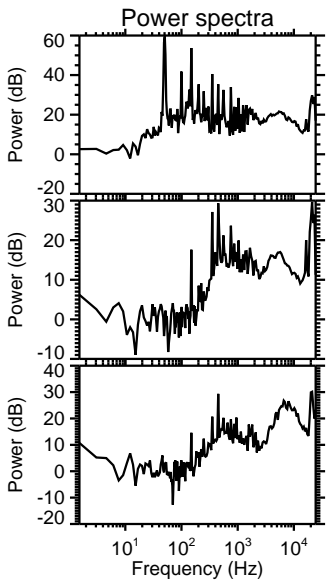
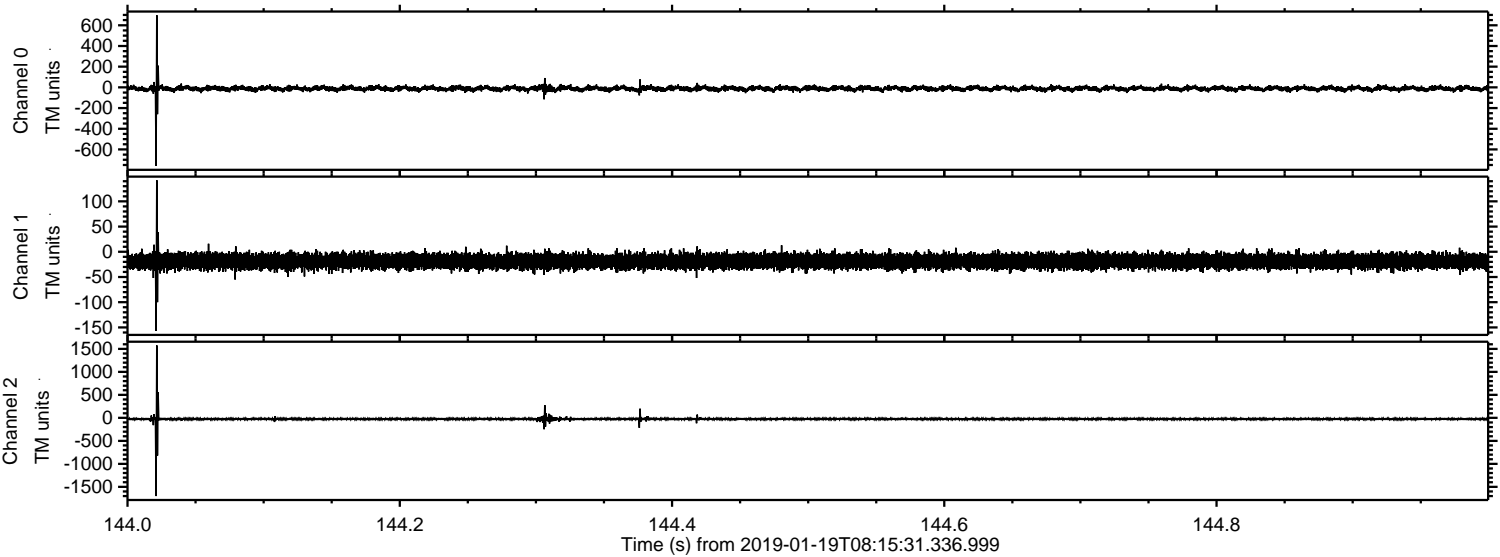
Channel 0
mn: -1404
mx: 1012
 μ : -11.4
 σ : 17.7

Channel 1
mn: -233
mx: 232
 μ : -18.9
 σ : 7.9

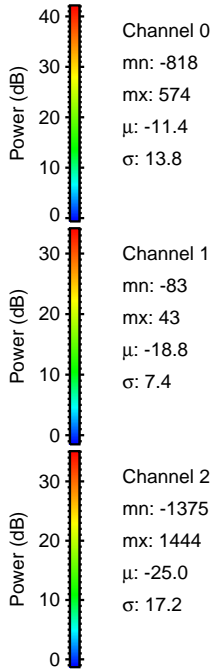
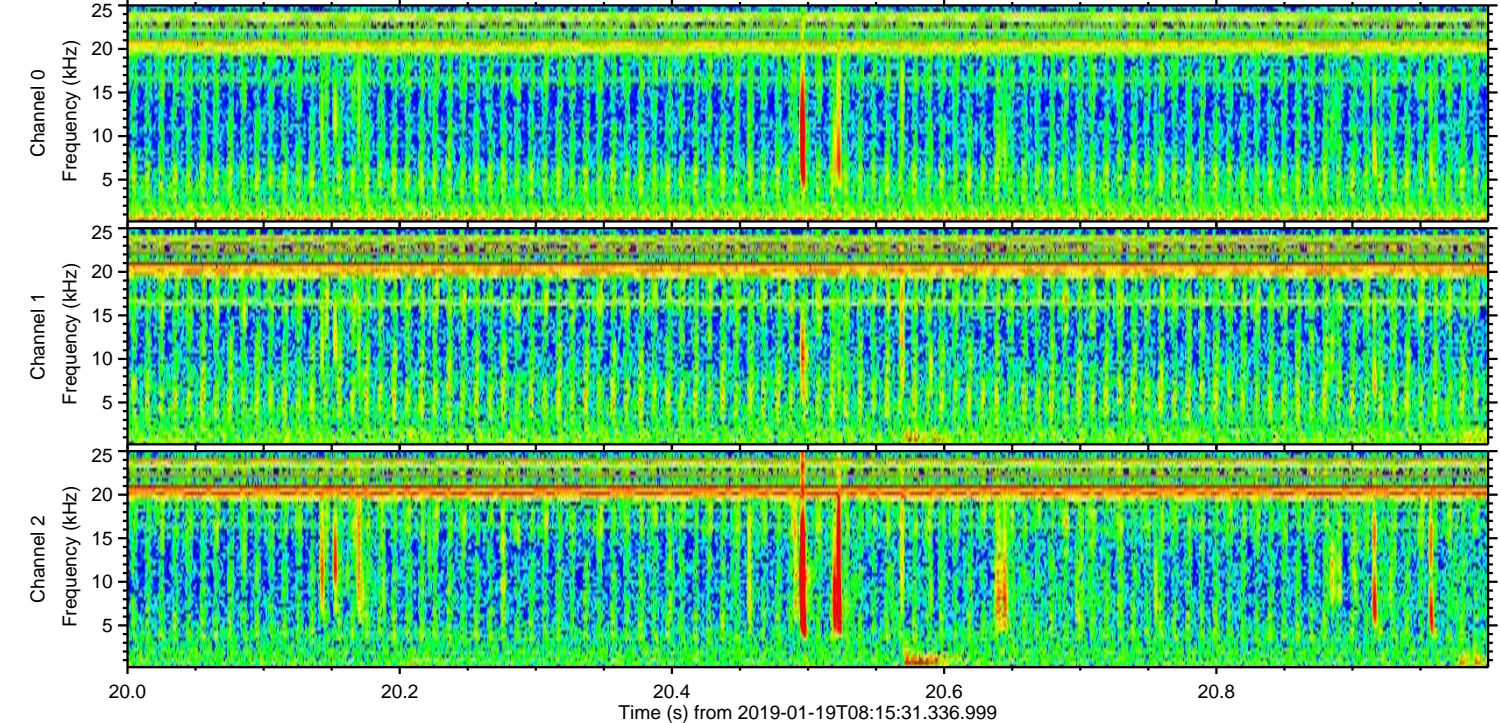
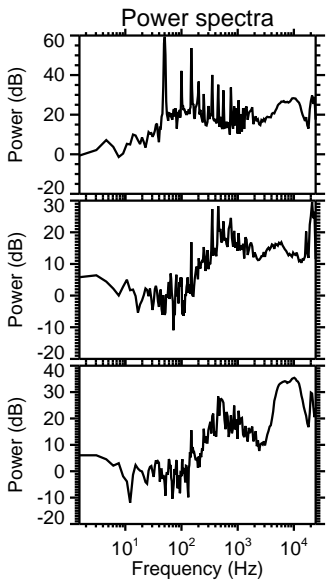
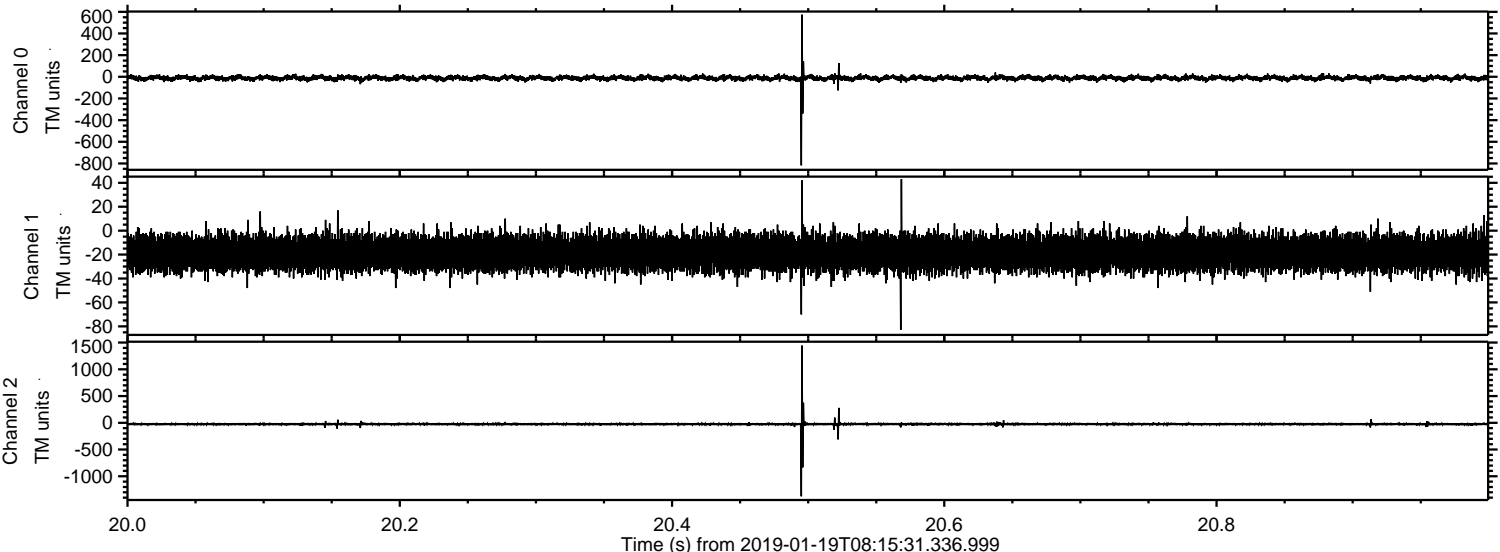
Channel 2
mn: -2211
mx: 2038
 μ : -25.0
 σ : 28.6

ELMAVAN 3D WAVEFORMS (Measured data sampled at 50 kHz) 51000 packets of 144 samples from 2019-01-19T08:15:31.336.999. Part 145/147

Processed Sat Jan 19 09:23:11 2019 by ELM ver.2012-10-06 from 001__elm20190119_081530__dat00.bin

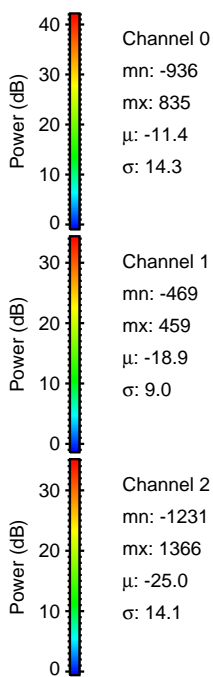
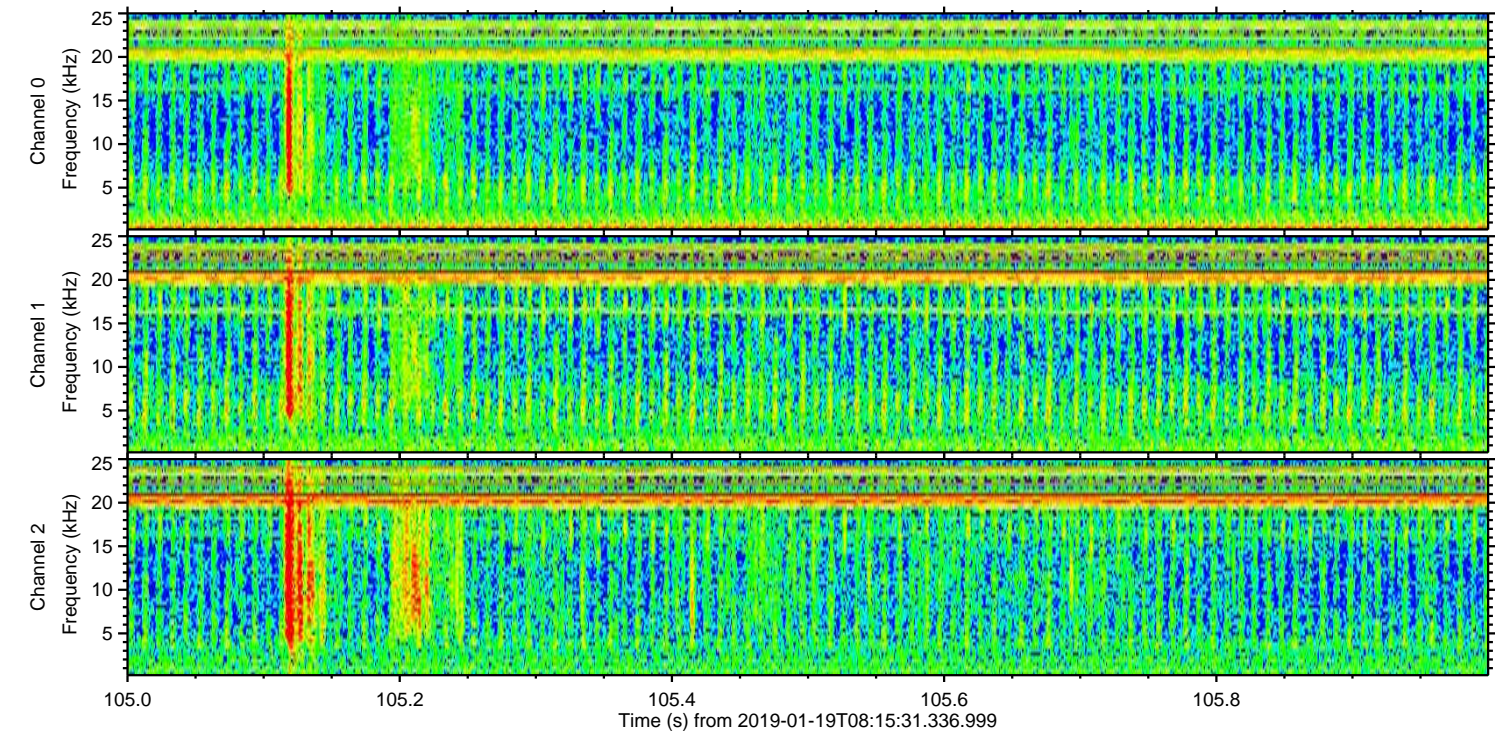
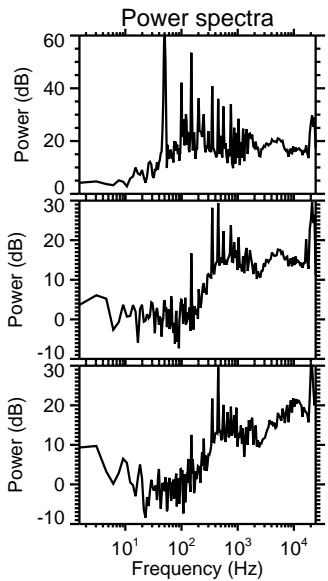
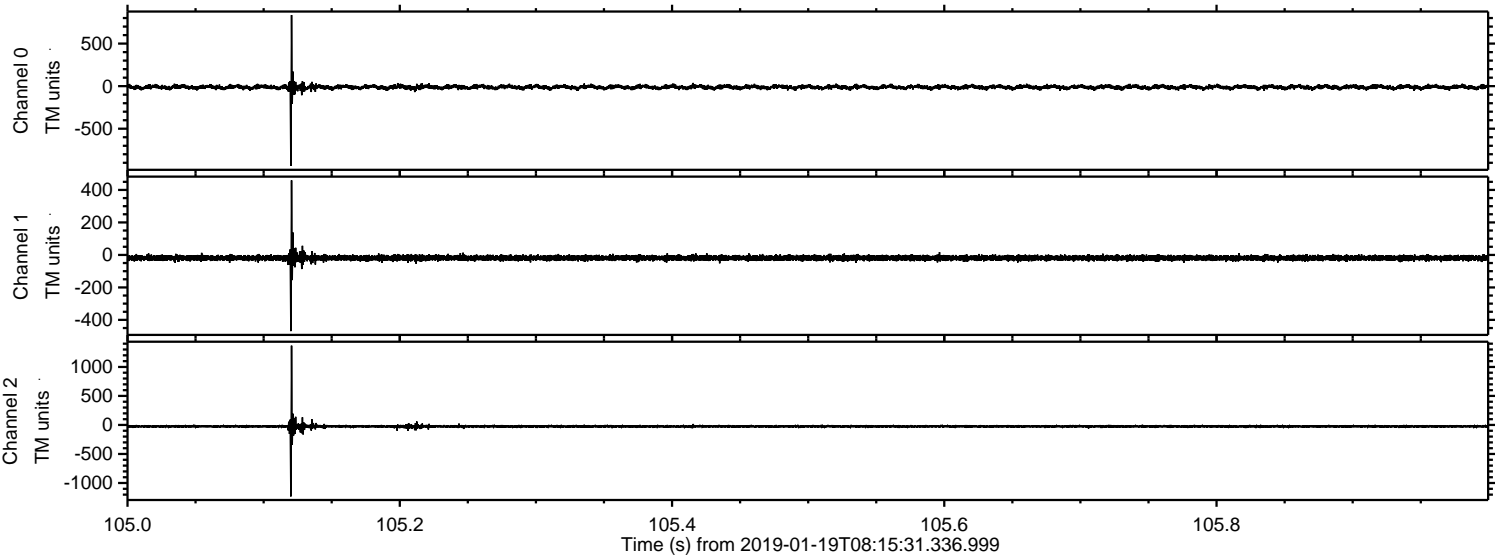


Processed Sat Jan 19 09:23:11 2019 by ELM ver.2012-10-06 from 001__elm20190119_081530__dat00.bin

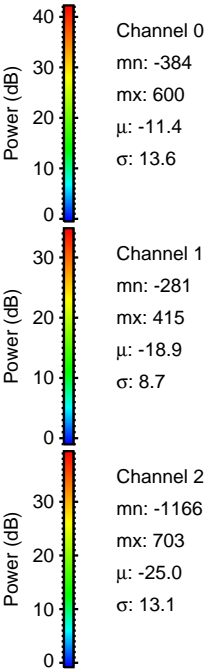
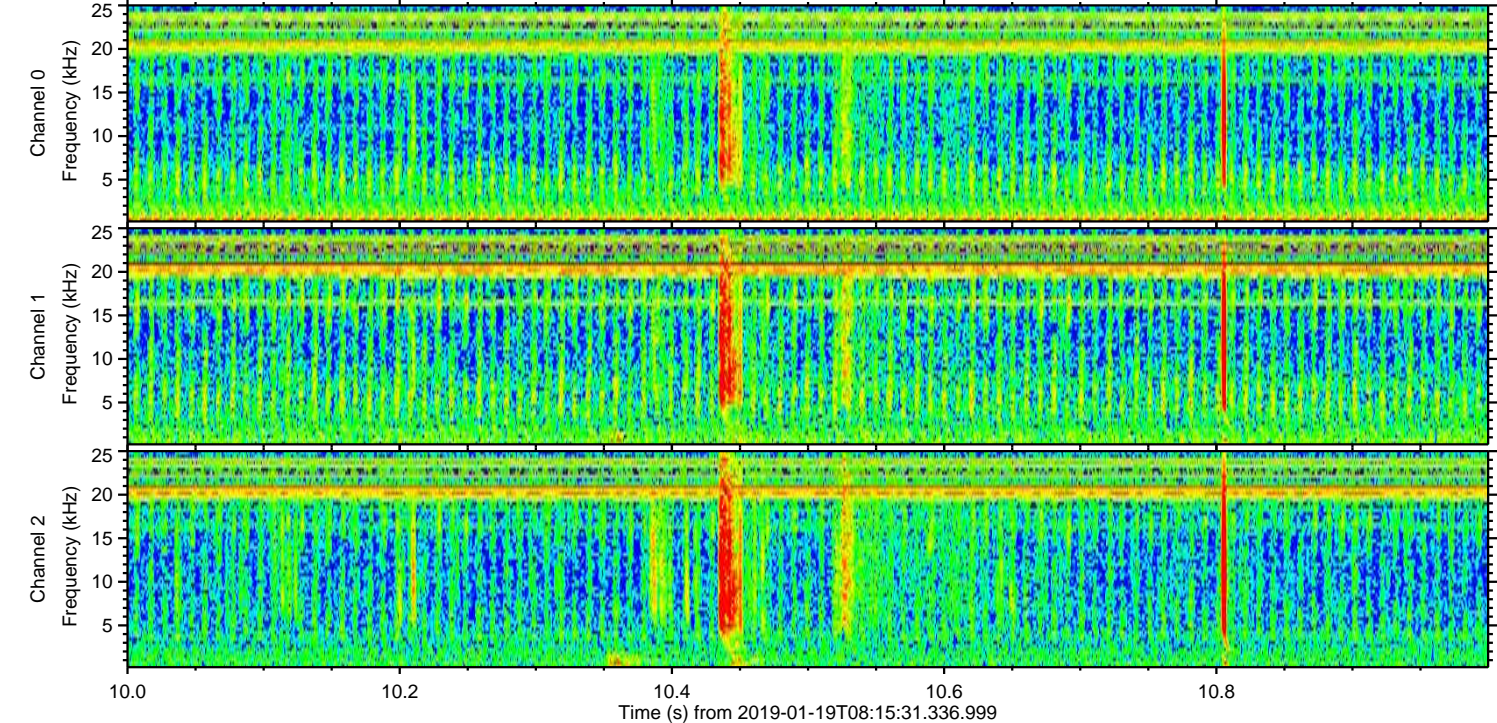
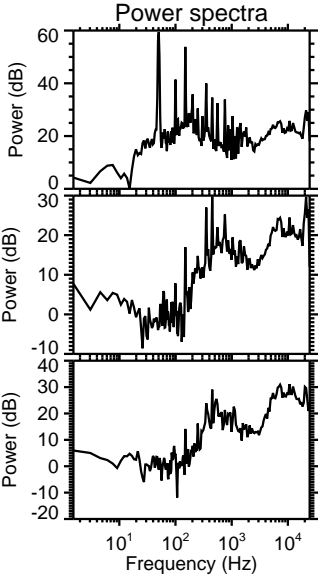
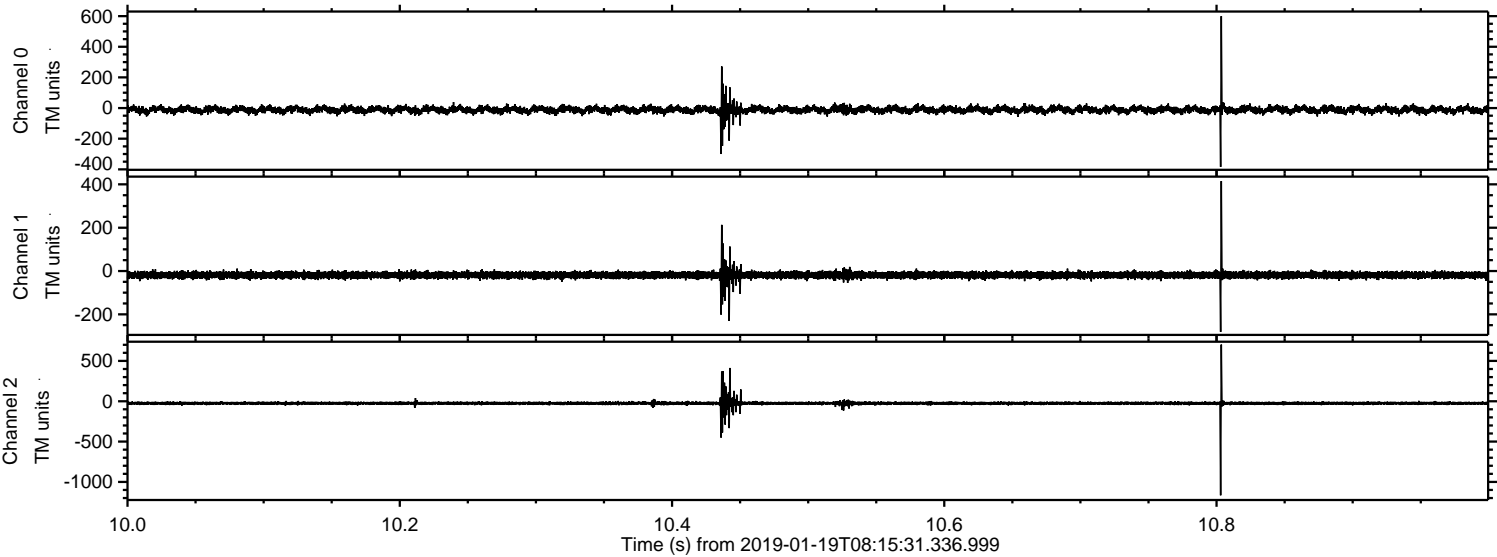


ELMAVAN 3D WAVEFORMS (Measured data sampled at 50 kHz) 51000 packets of 144 samples from 2019-01-19T08:15:31.336.999. Part 106/147

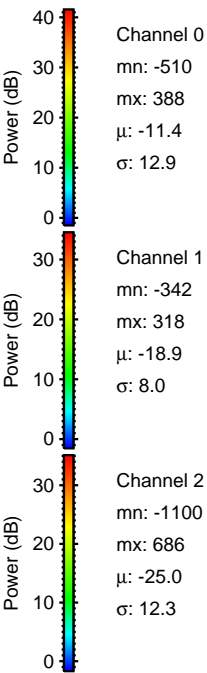
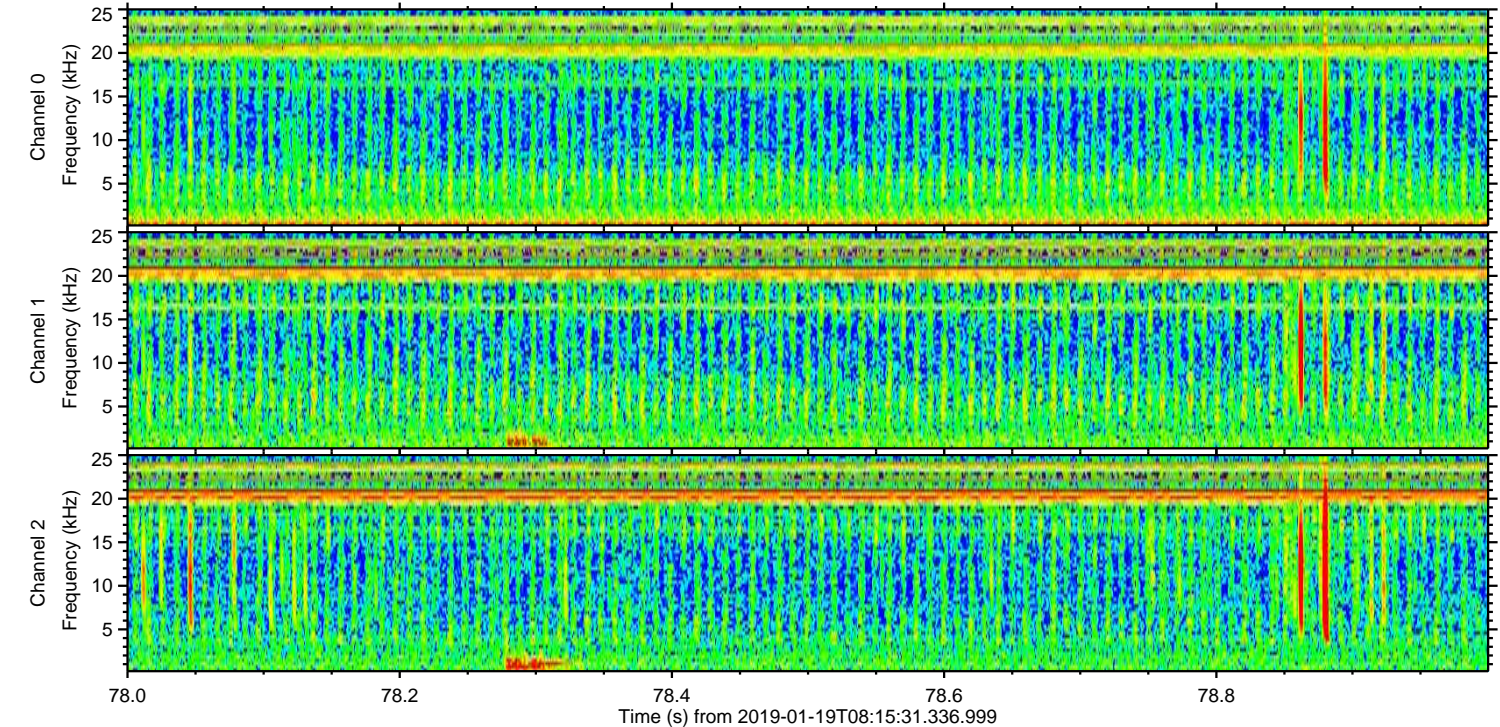
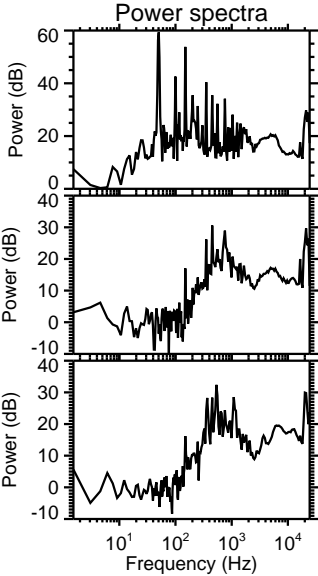
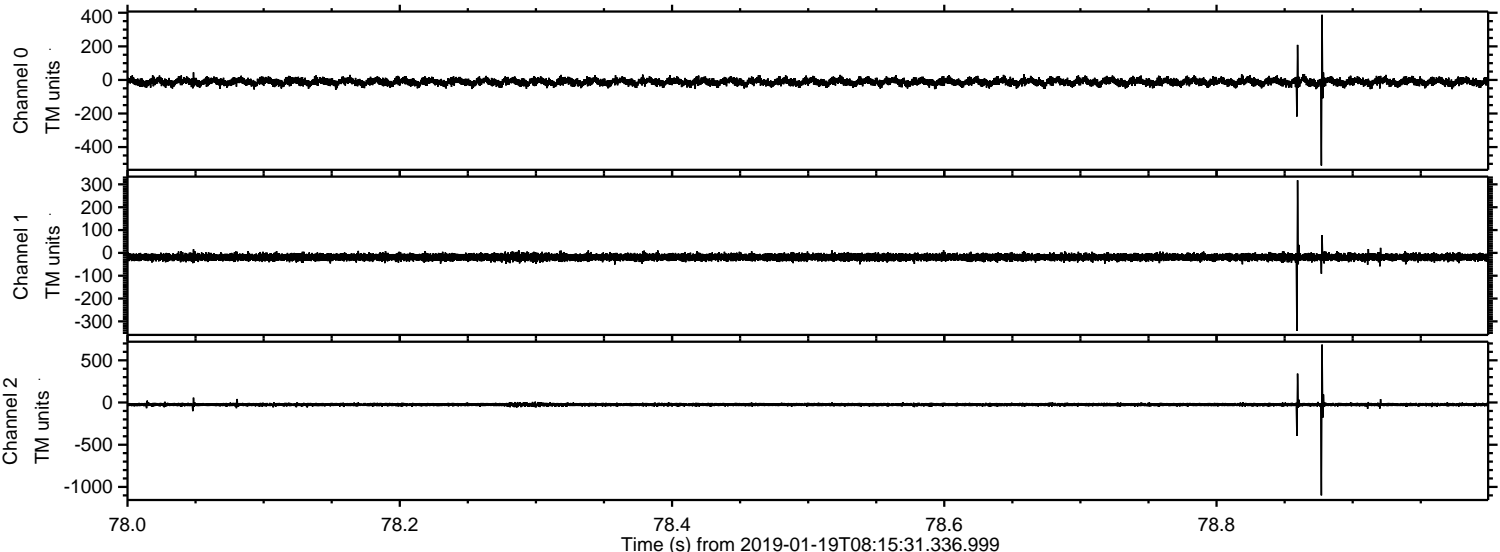
Processed Sat Jan 19 09:23:12 2019 by ELM ver.2012-10-06 from 001__elm20190119_081530__dat00.bin



Processed Sat Jan 19 09:23:13 2019 by ELM ver.2012-10-06 from 001__elm20190119_081530__dat00.bin



Processed Sat Jan 19 09:23:13 2019 by ELM ver.2012-10-06 from 001__elm20190119_081530__dat00.bin



Processed Sat Jan 19 09:23:14 2019 by ELM ver.2012-10-06 from 001__elm20190119_081530__dat00.bin

