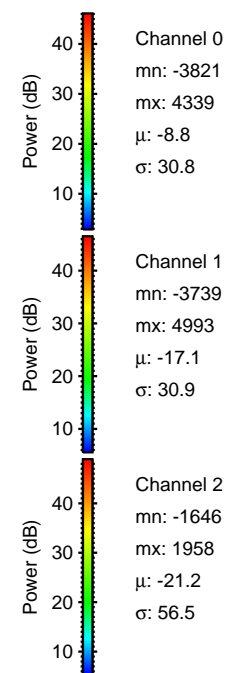
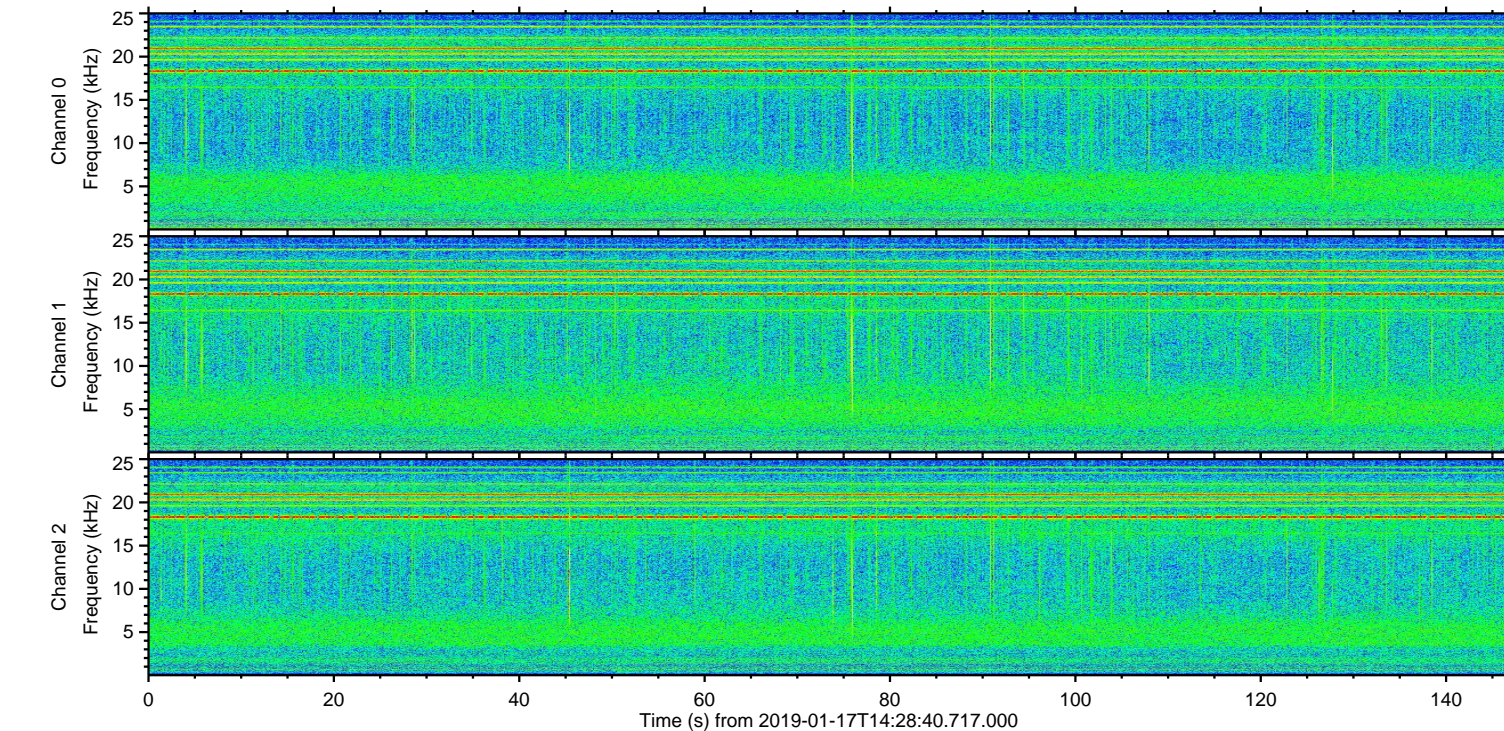
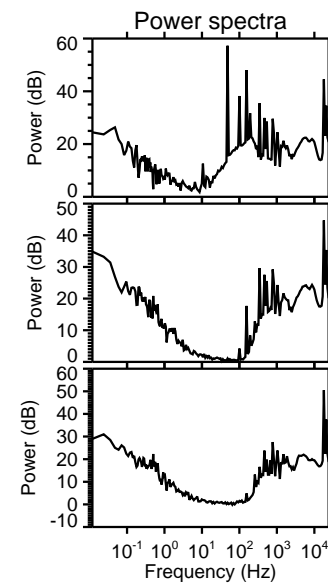
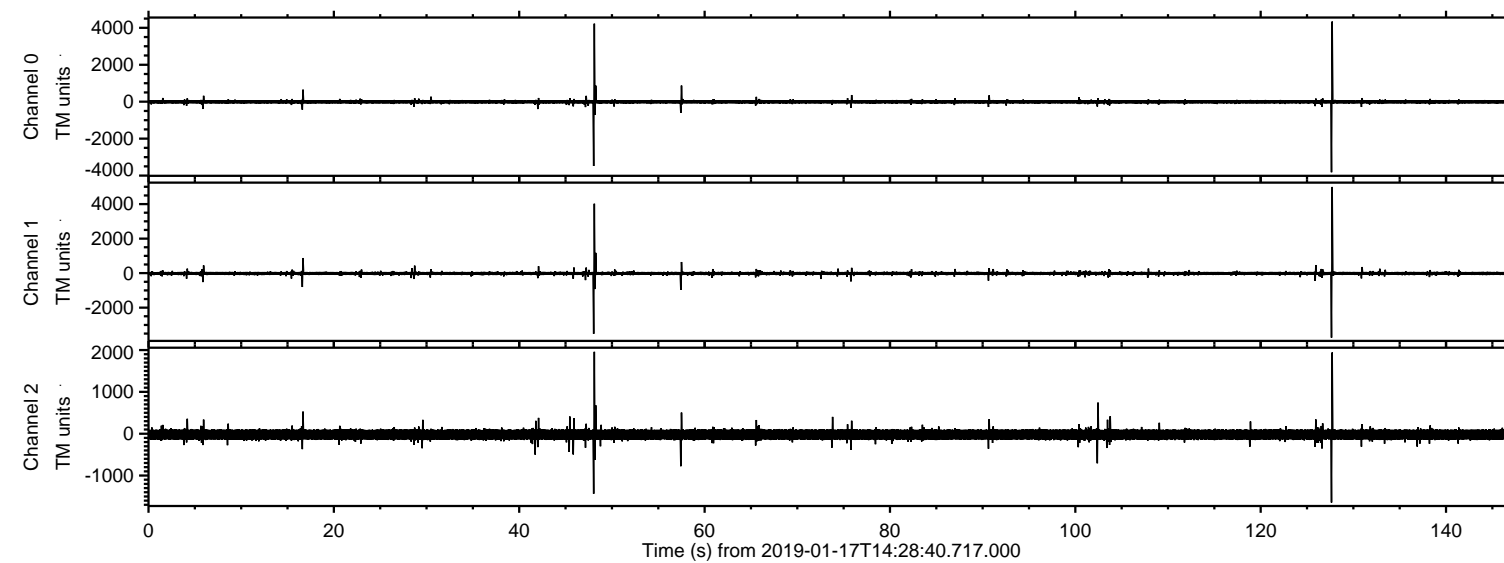


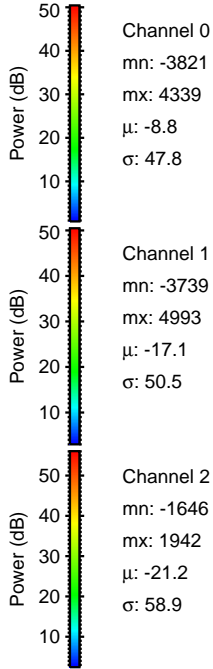
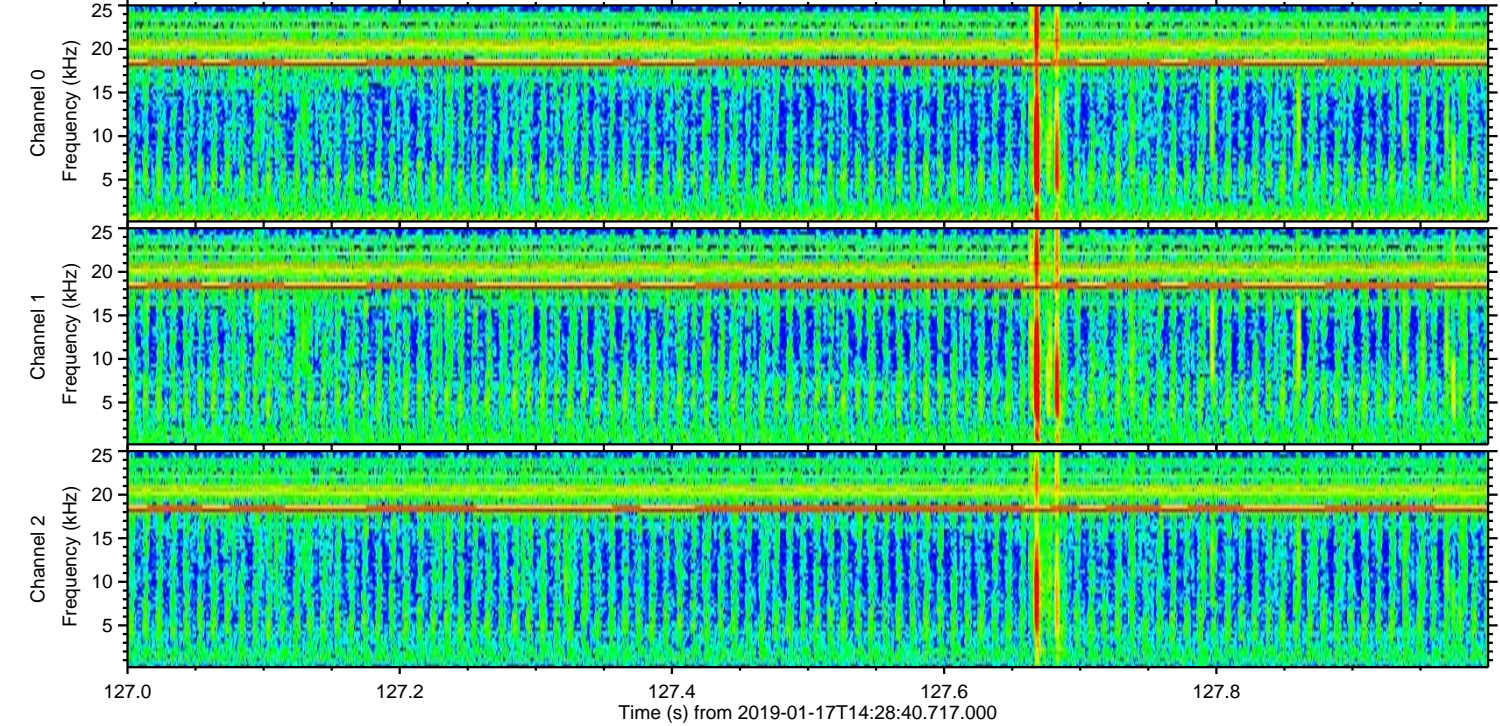
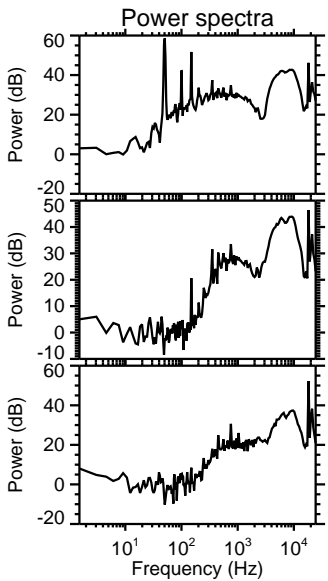
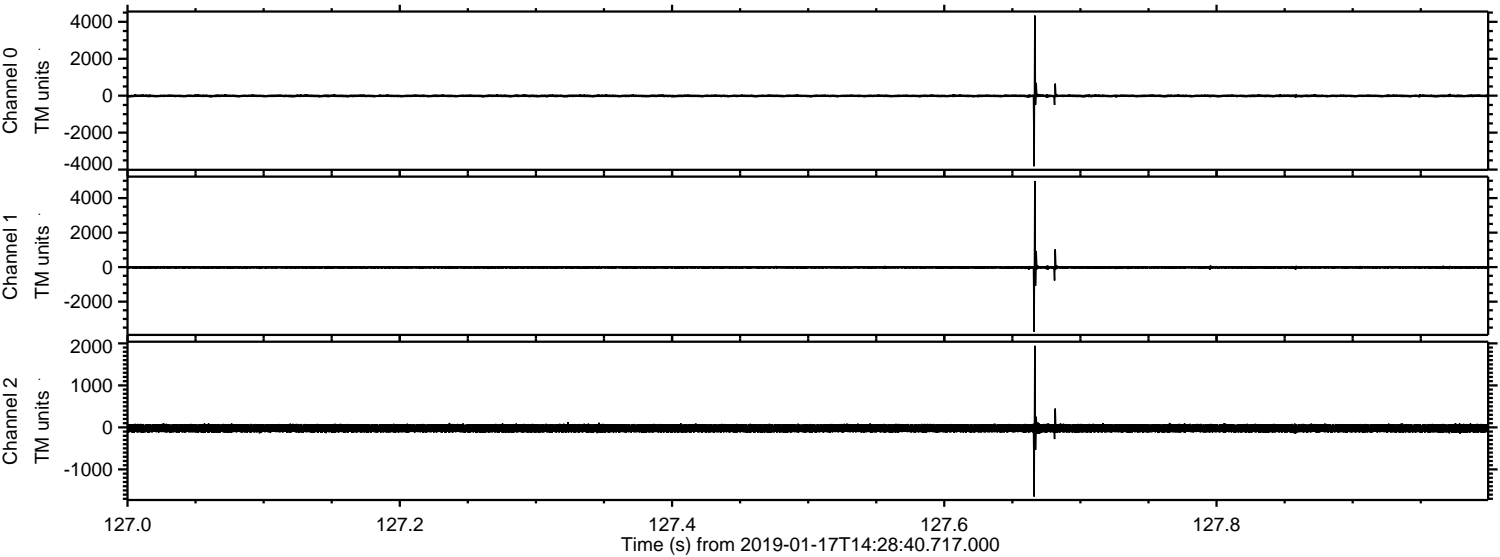
ELMAVAN 3D WAVEFORMS (Measured data sampled at 50 kHz) 51000 packets of 144 samples from 2019-01-17T14:28:40.717.000.

Processed Thu Jan 17 15:36:10 2019 by ELM ver.2012-10-06 from 001__elm20190117_142839__dat00.bin

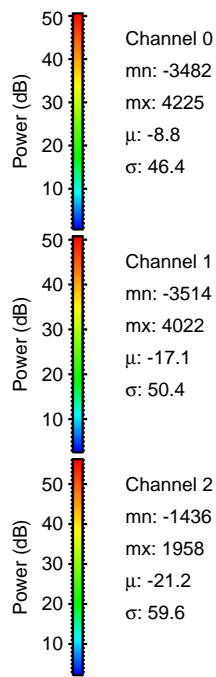
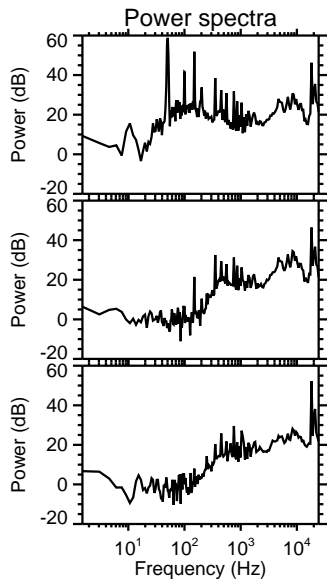
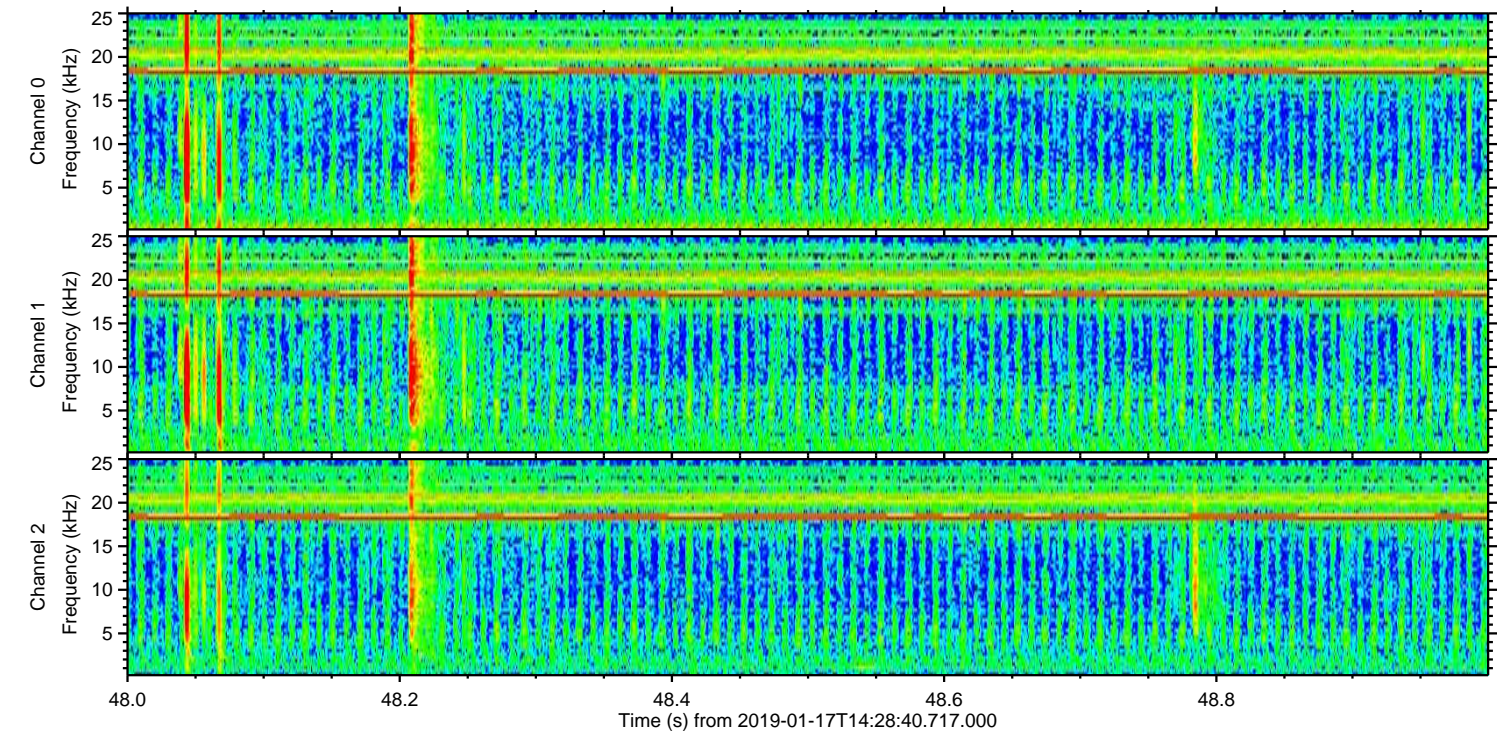
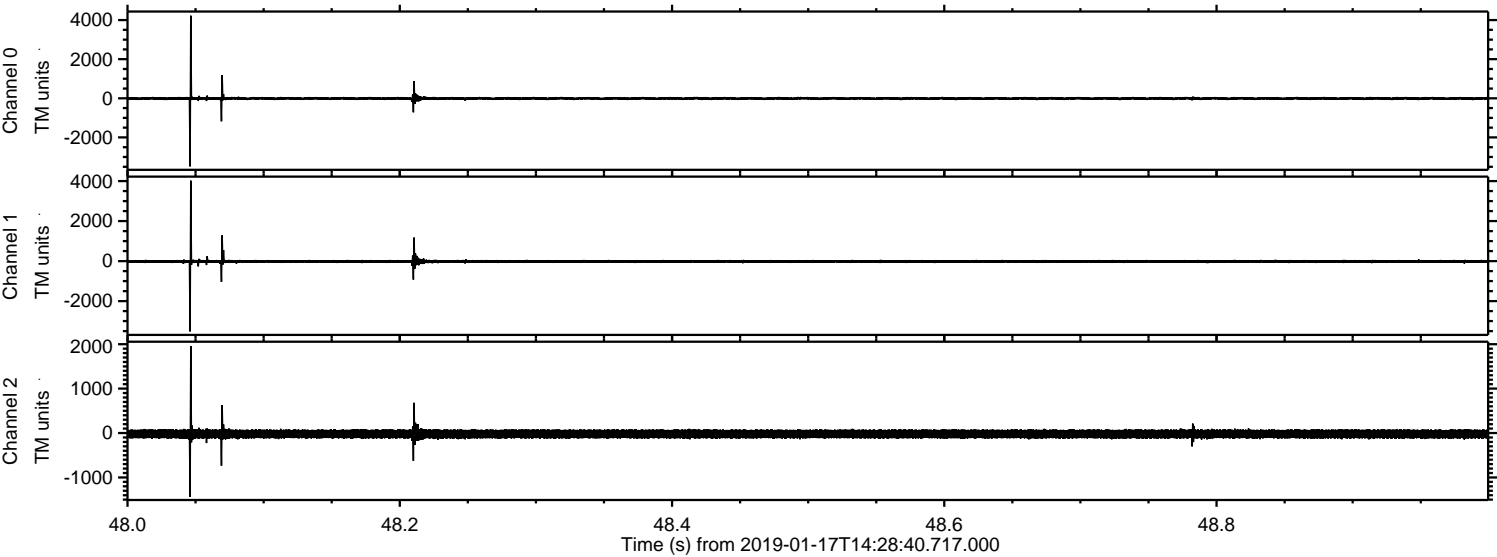


ELMAVAN 3D WAVEFORMS (Measured data sampled at 50 kHz) 51000 packets of 144 samples from 2019-01-17T14:28:40.717.000. Part 128/147

Processed Thu Jan 17 15:36:16 2019 by ELM ver.2012-10-06 from 001__elm20190117_142839__dat00.bin



Processed Thu Jan 17 15:36:17 2019 by ELM ver.2012-10-06 from 001__elm20190117_142839__dat00.bin

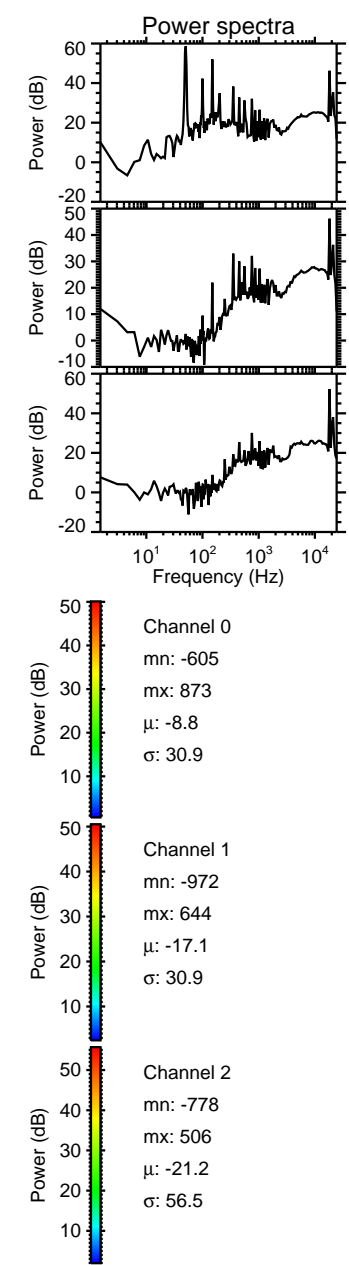
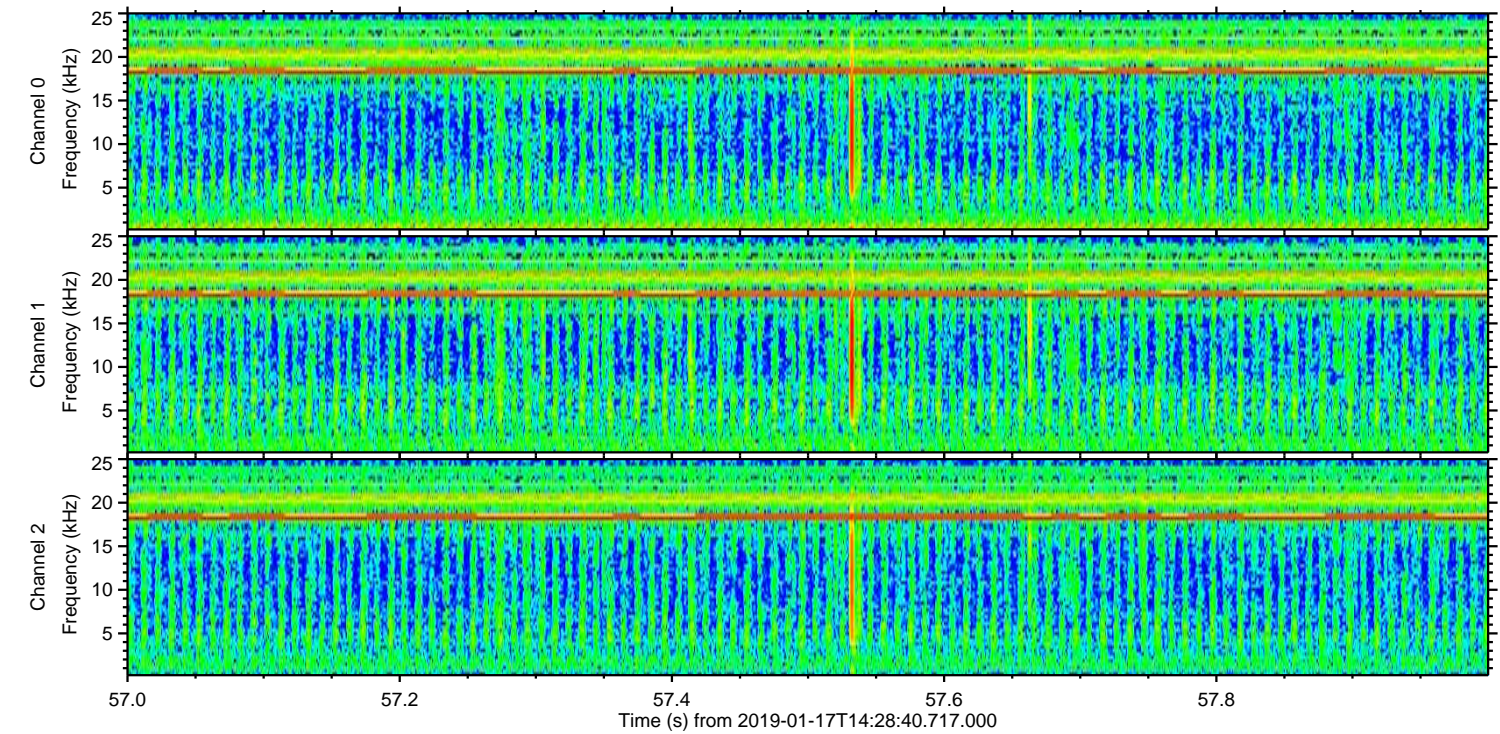
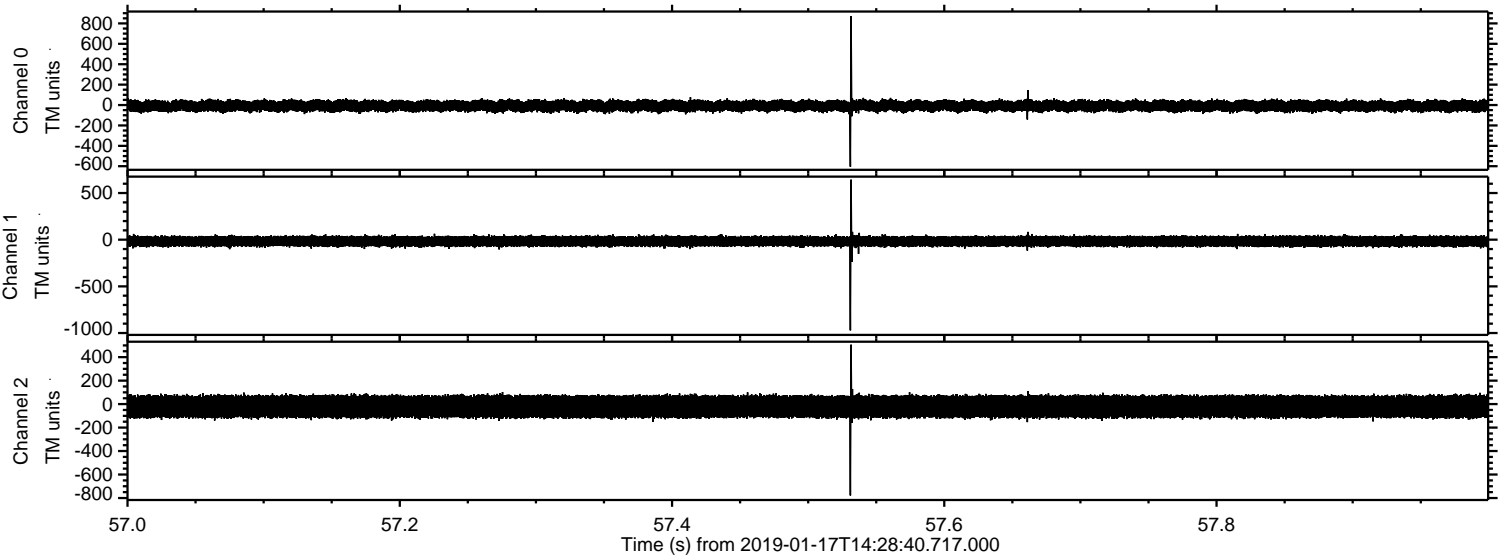


Channel 0
mn: -3482
mx: 4225
 μ : -8.8
 σ : 46.4

Channel 1
mn: -3514
mx: 4022
 μ : -17.1
 σ : 50.4

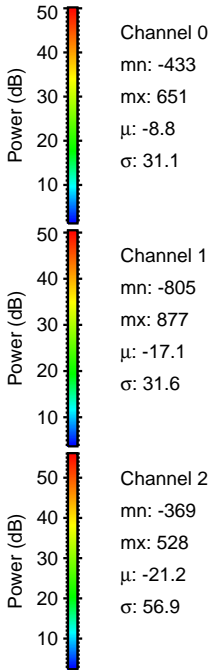
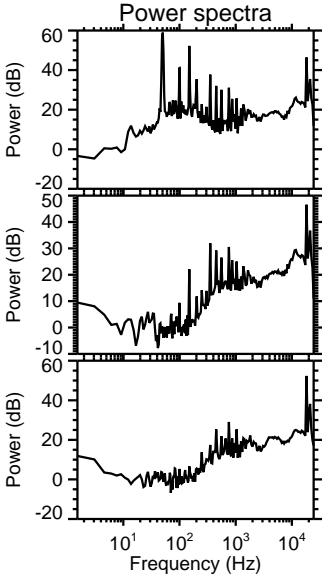
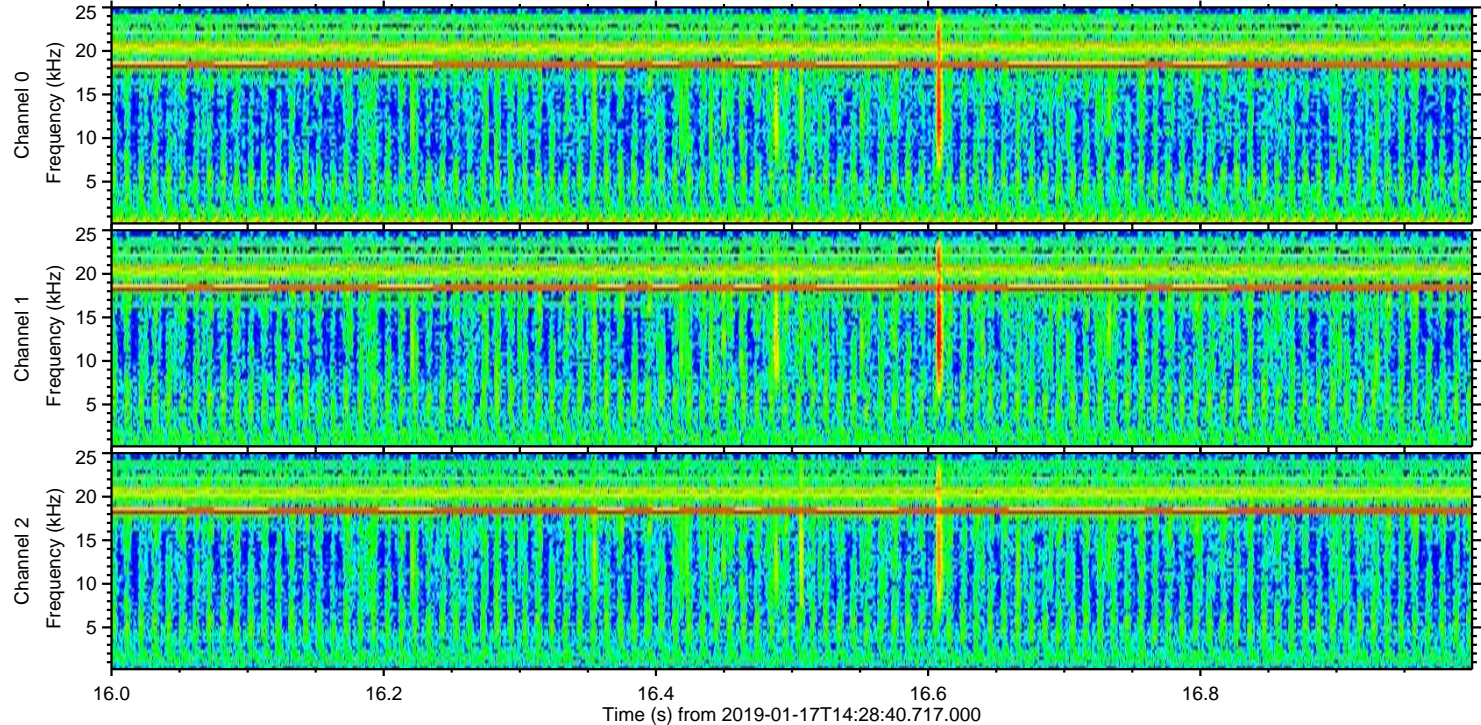
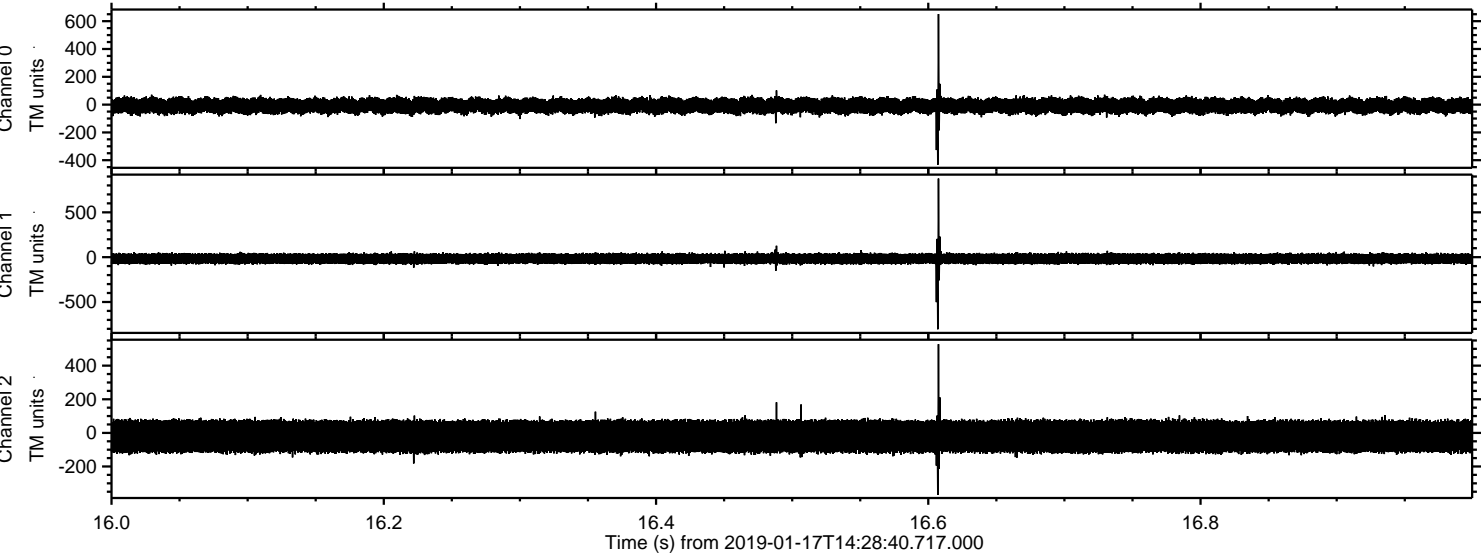
Channel 2
mn: -1436
mx: 1958
 μ : -21.2
 σ : 59.6

Processed Thu Jan 17 15:36:17 2019 by ELM ver.2012-10-06 from 001__elm20190117_142839__dat00.bin

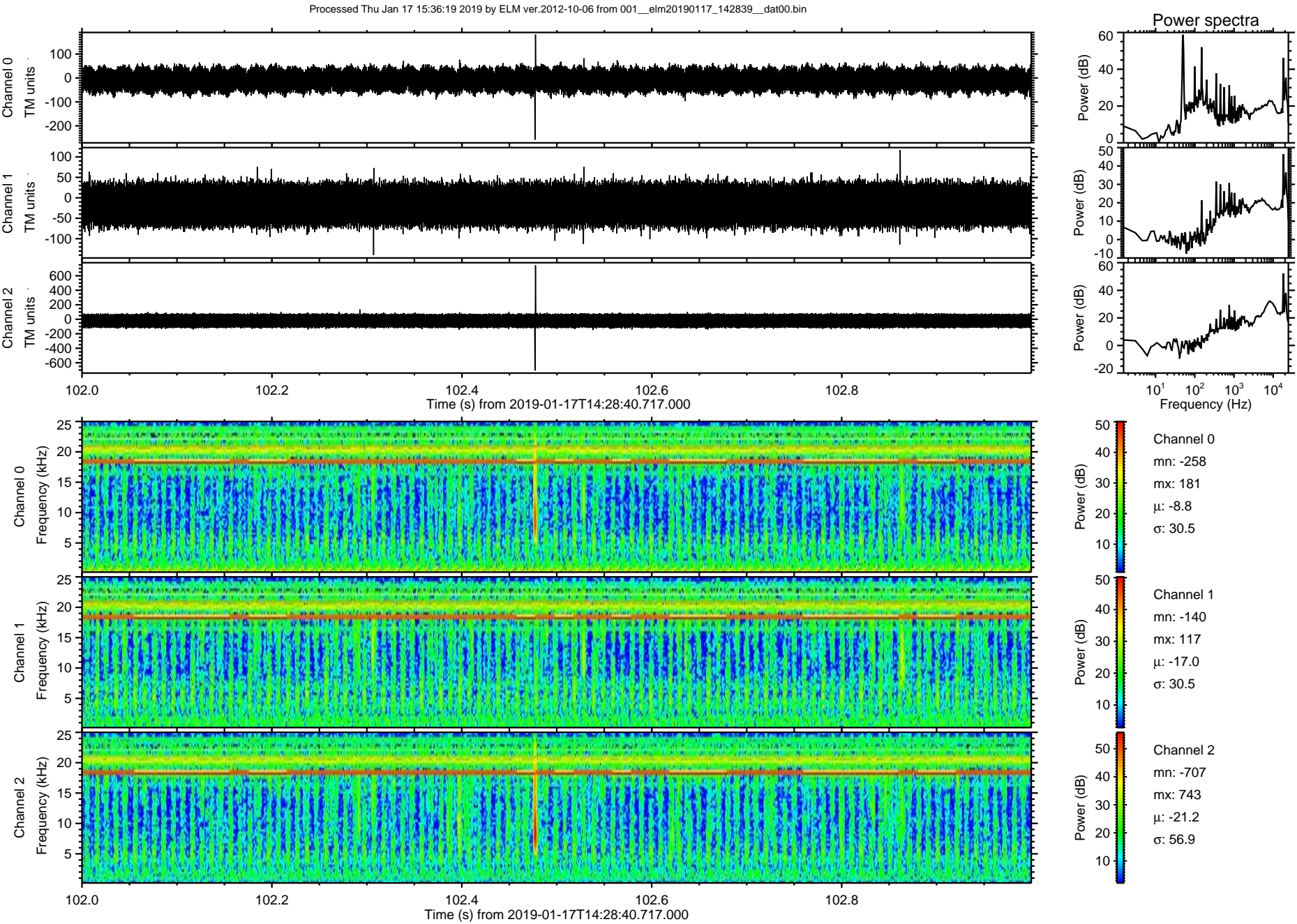


ELMAVAN 3D WAVEFORMS (Measured data sampled at 50 kHz) 51000 packets of 144 samples from 2019-01-17T14:28:40.717.000. Part 17/147

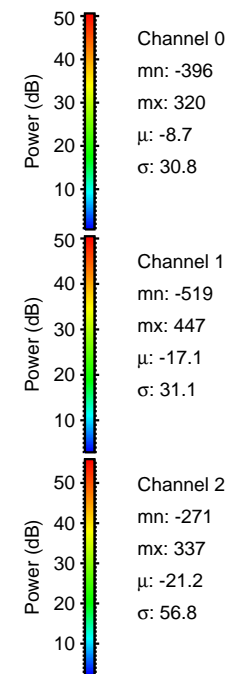
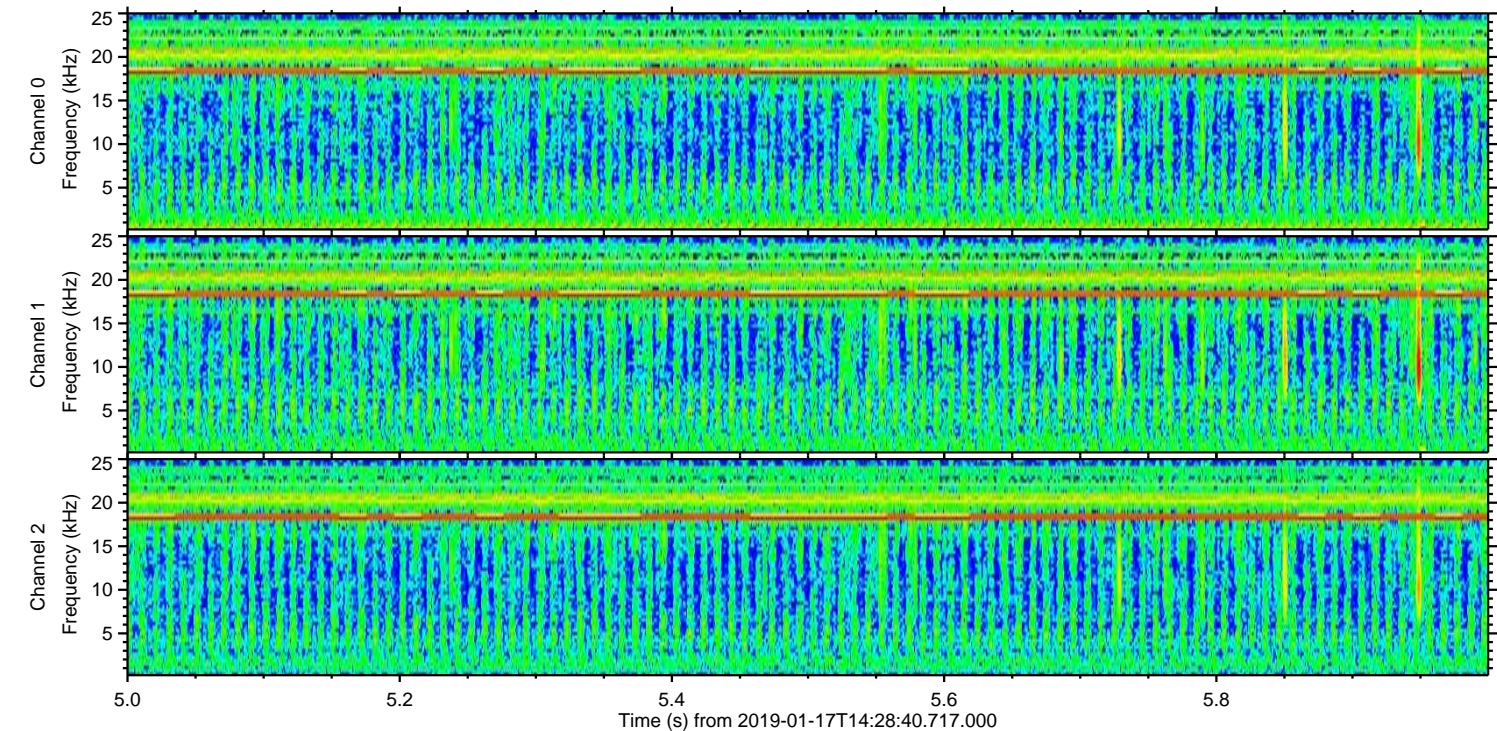
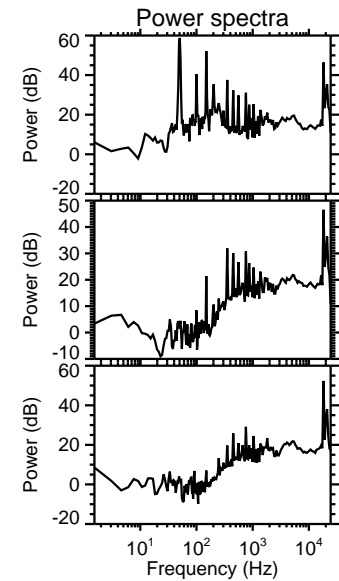
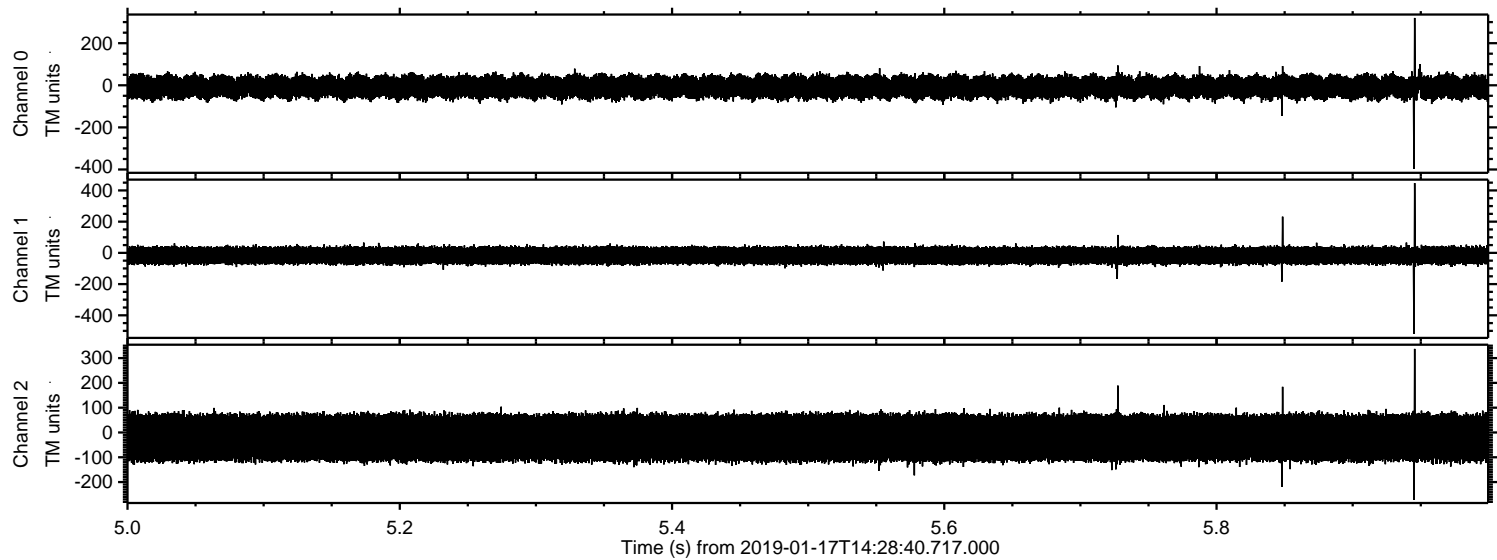
Processed Thu Jan 17 15:36:18 2019 by ELM ver.2012-10-06 from 001__elm20190117_142839__dat00.bin



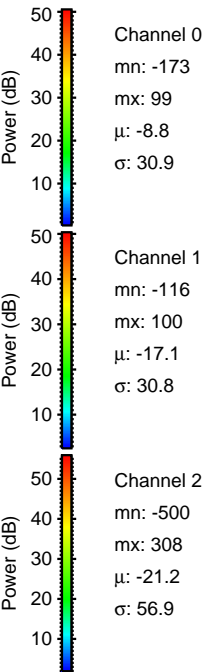
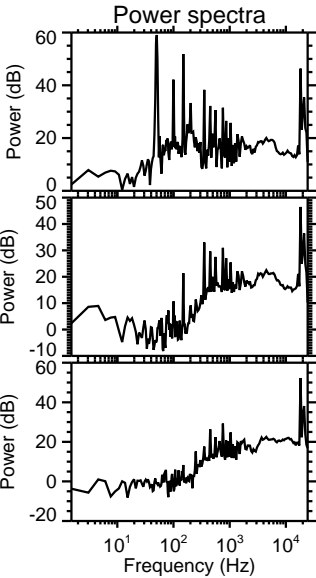
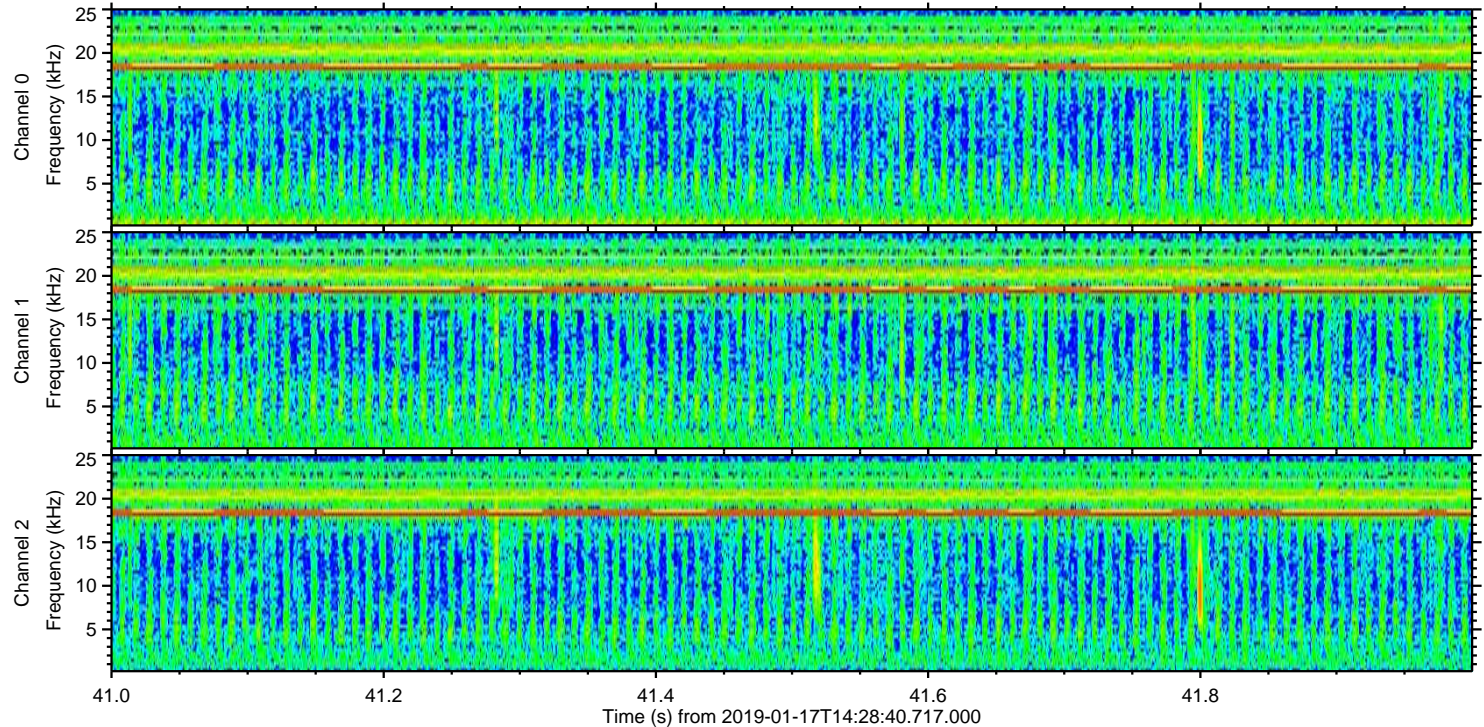
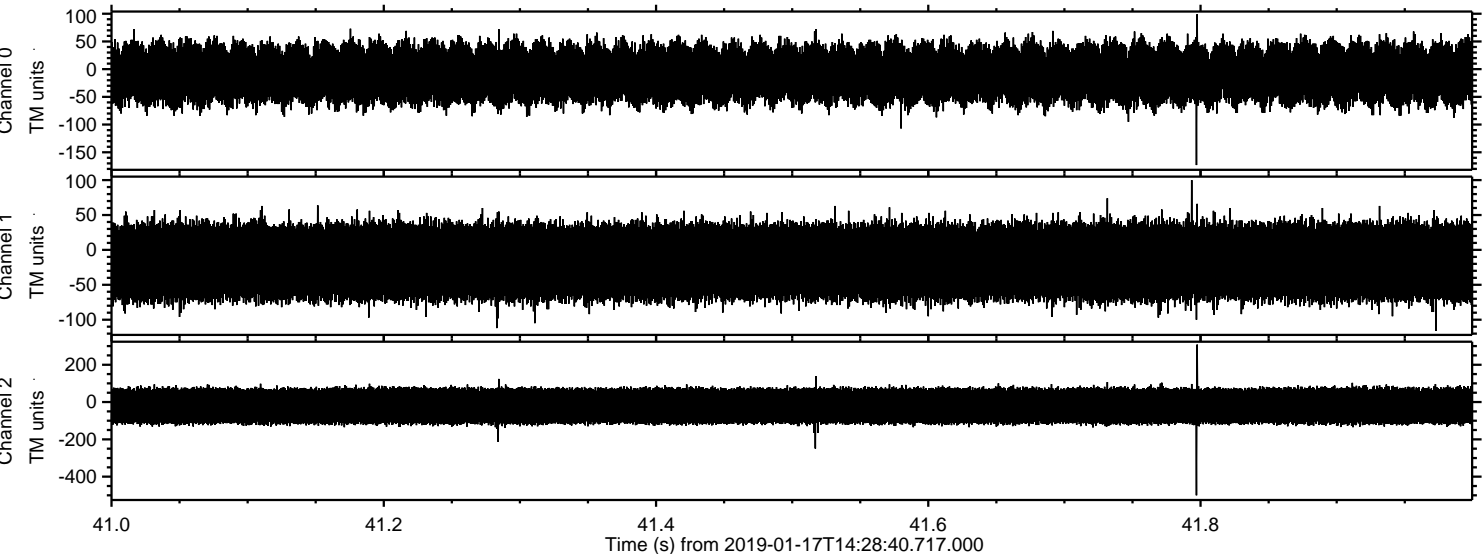
ELMAVAN 3D WAVEFORMS (Measured data sampled at 50 kHz) 51000 packets of 144 samples from 2019-01-17T14:28:40.717.000. Part 103/147



Processed Thu Jan 17 15:36:19 2019 by ELM ver.2012-10-06 from 001__elm20190117_142839__dat00.bin



Processed Thu Jan 17 15:36:20 2019 by ELM ver.2012-10-06 from 001__elm20190117_142839__dat00.bin

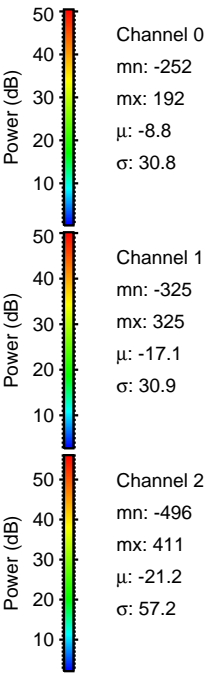
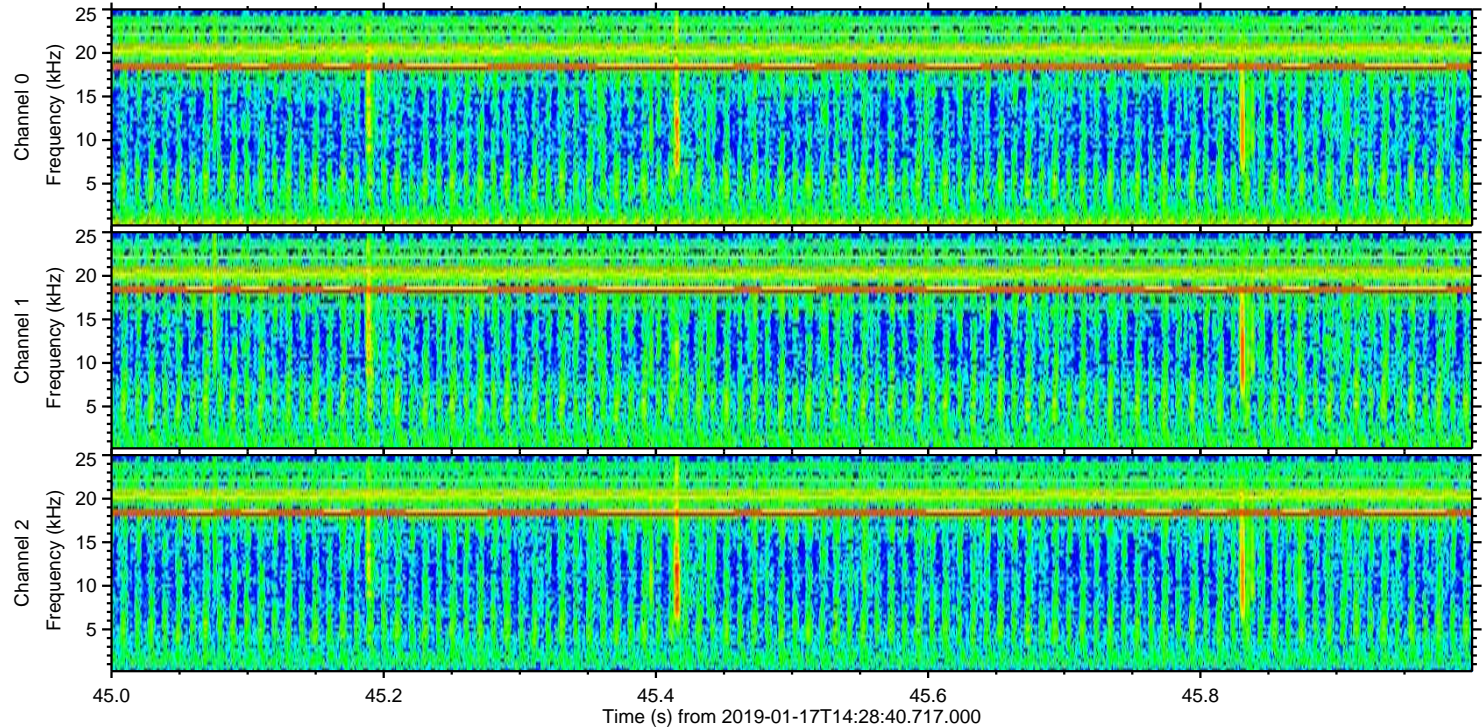
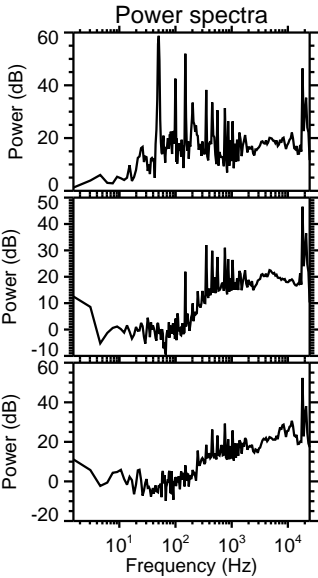
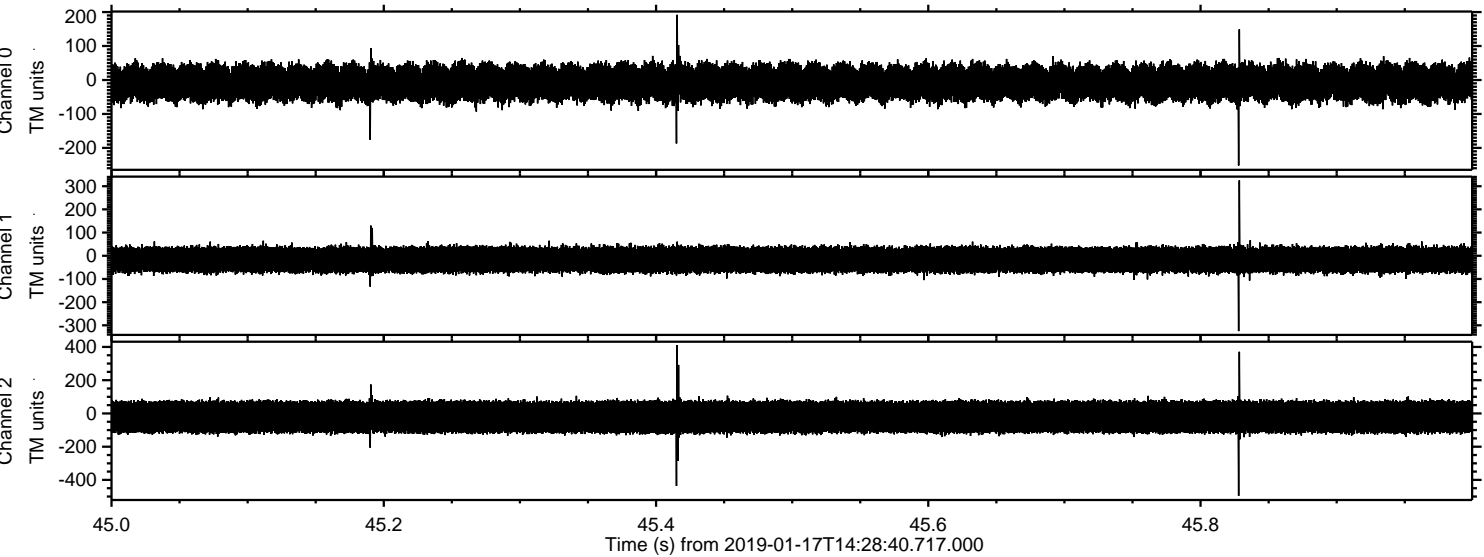


Channel 0
mn: -173
mx: 99
 μ : -8.8
 σ : 30.9

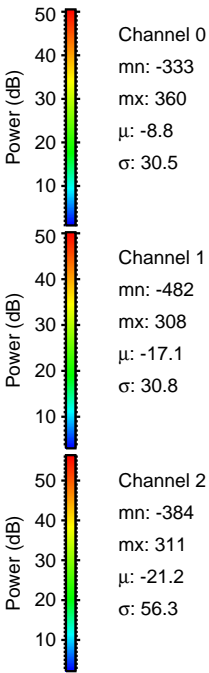
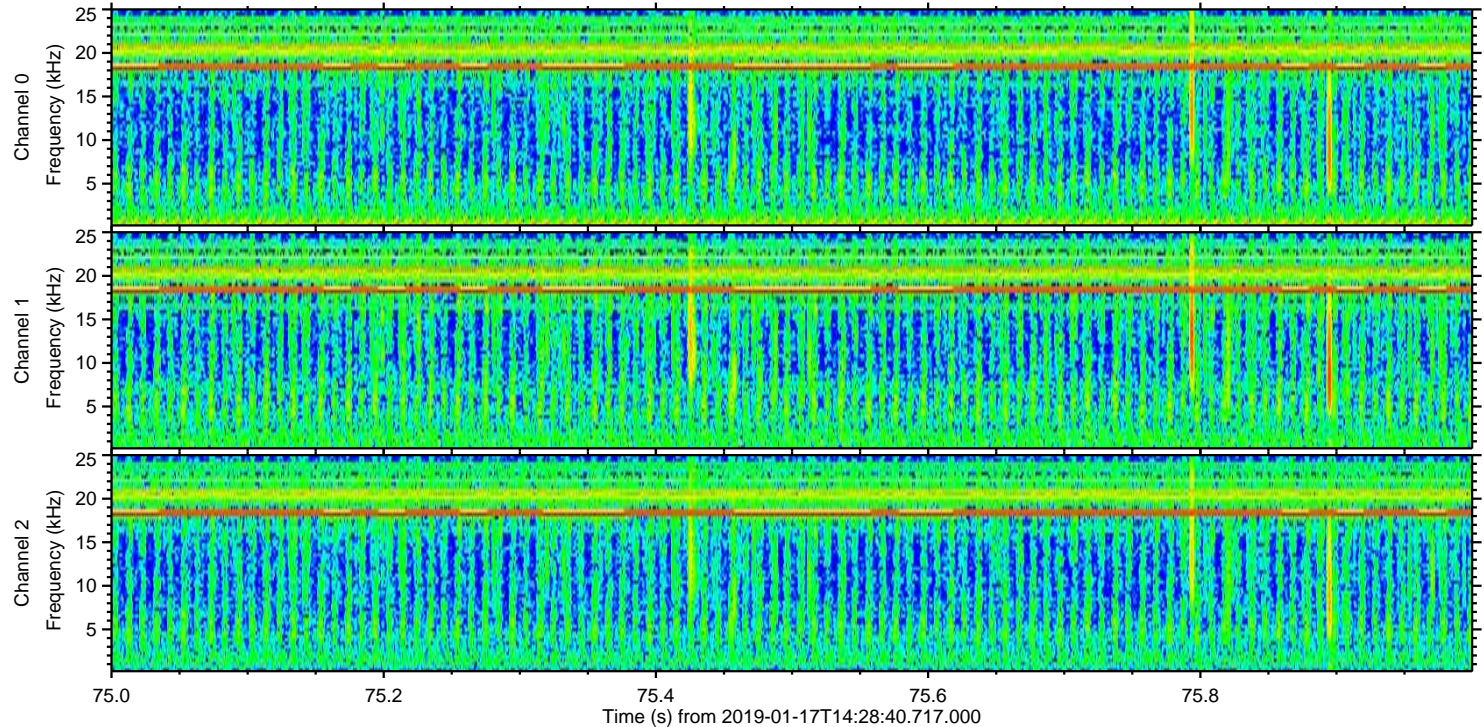
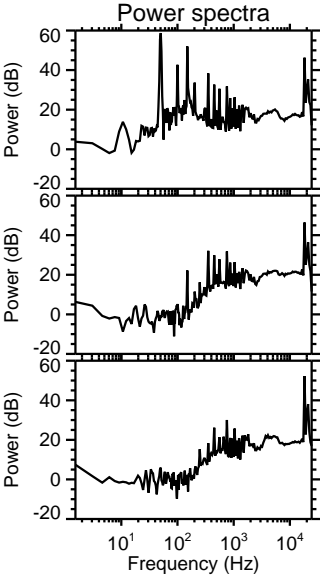
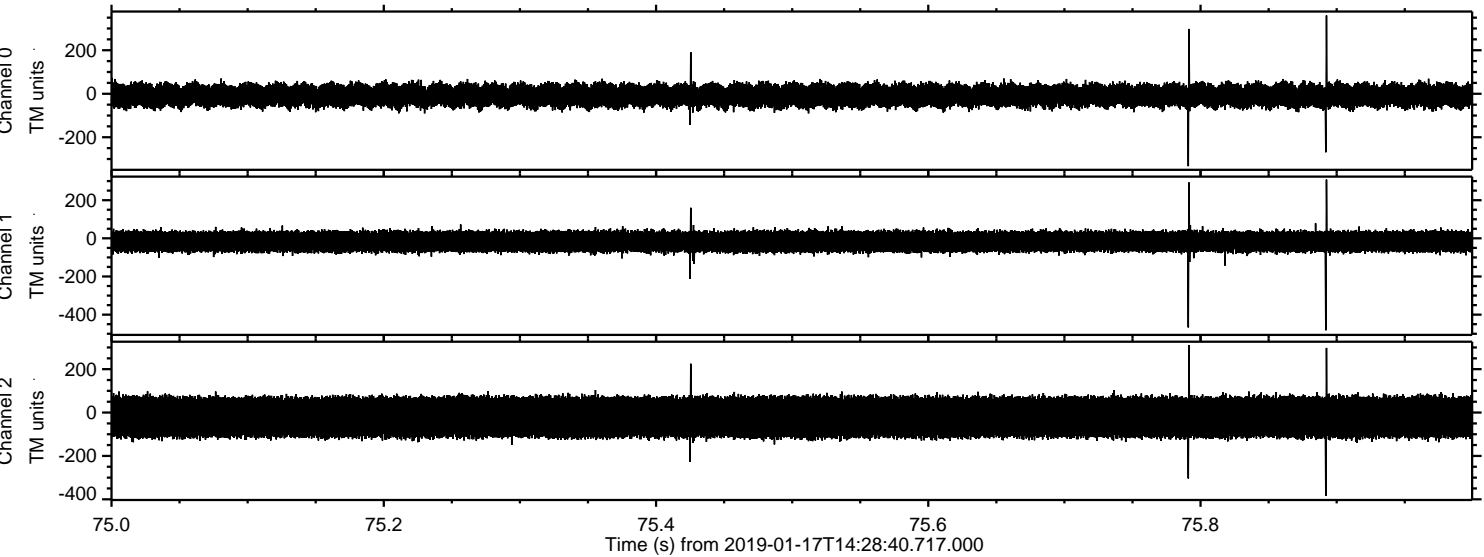
Channel 1
mn: -116
mx: 100
 μ : -17.1
 σ : 30.8

Channel 2
mn: -500
mx: 308
 μ : -21.2
 σ : 56.9

Processed Thu Jan 17 15:36:21 2019 by ELM ver.2012-10-06 from 001__elm20190117_142839__dat00.bin



Processed Thu Jan 17 15:36:21 2019 by ELM ver.2012-10-06 from 001__elm20190117_142839__dat00.bin



Processed Thu Jan 17 15:36:22 2019 by ELM ver.2012-10-06 from 001__elm20190117_142839__dat00.bin

