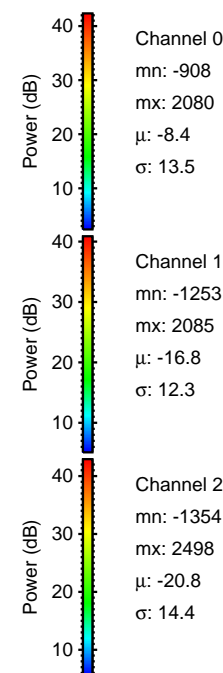
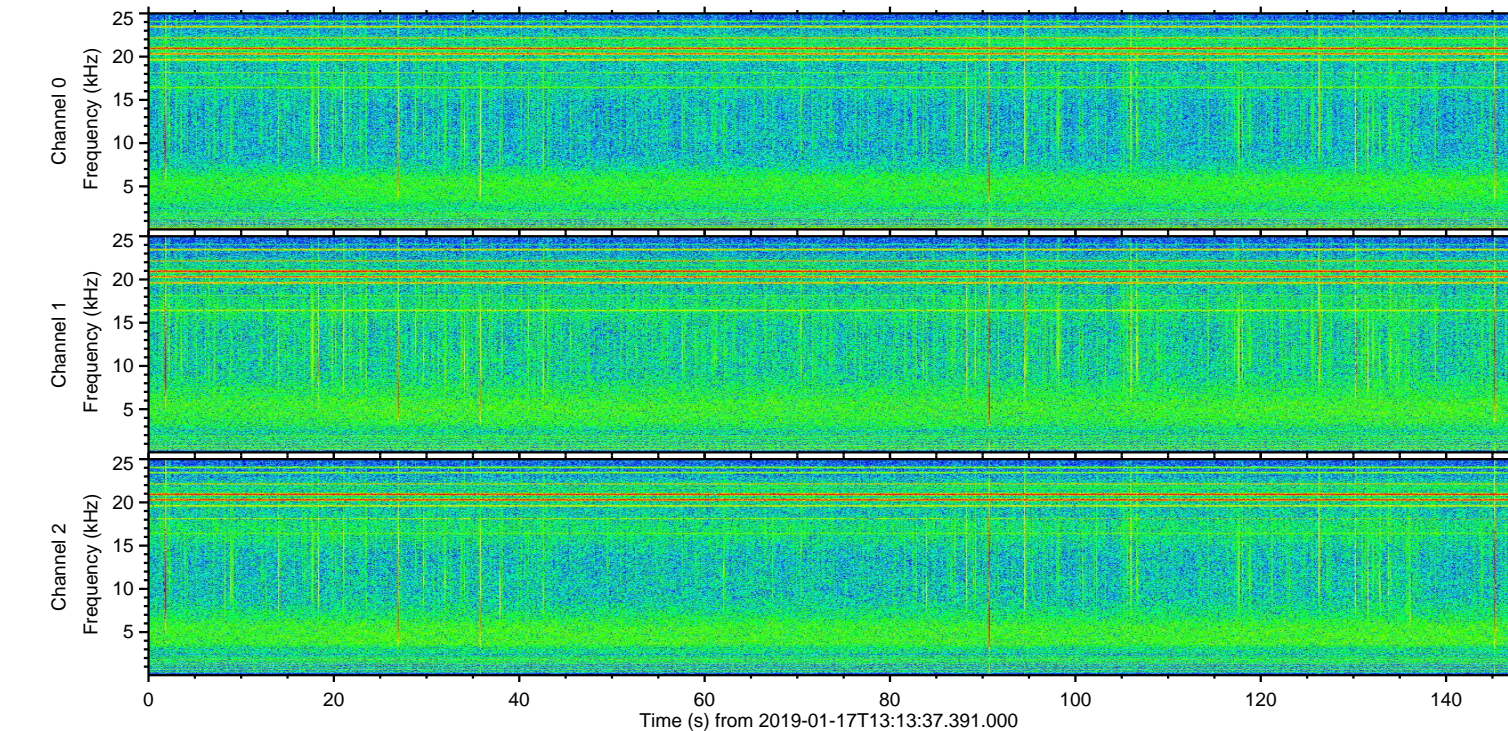
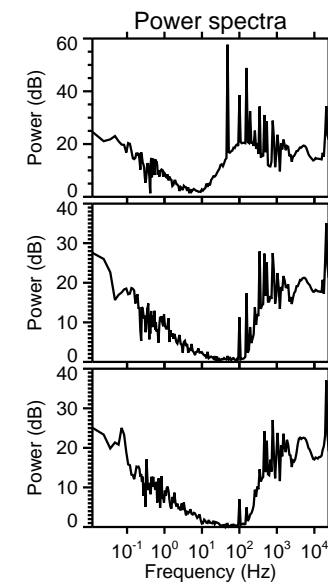
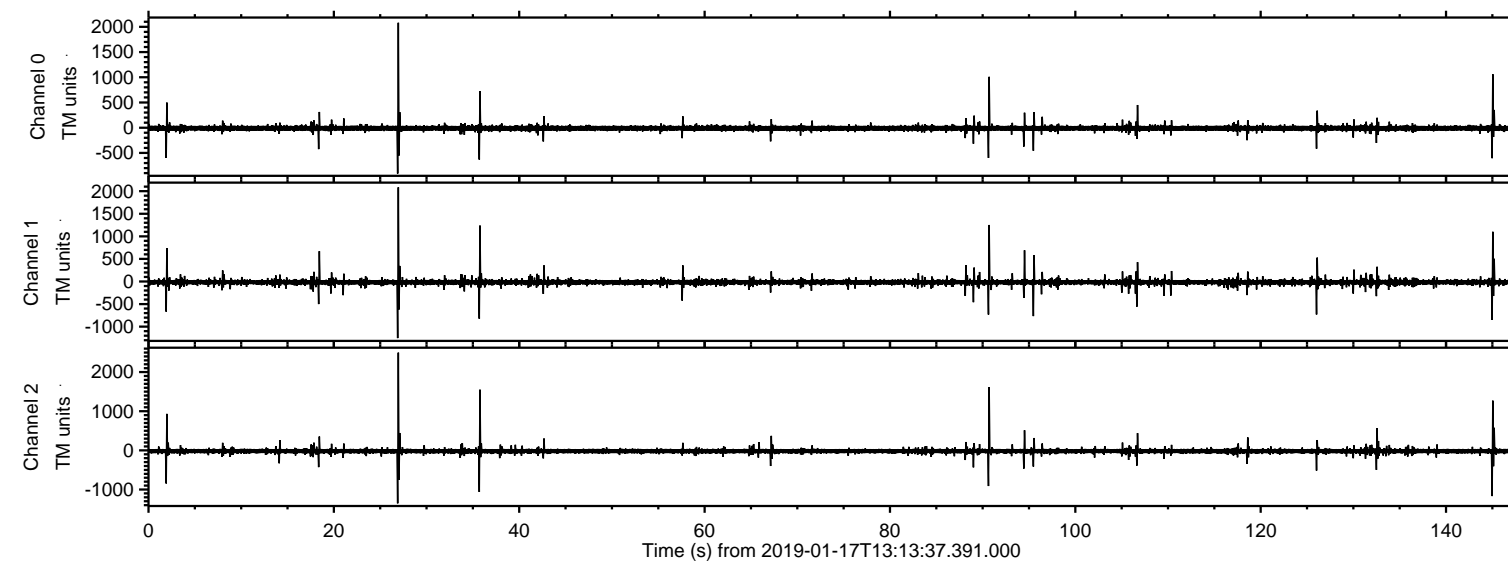
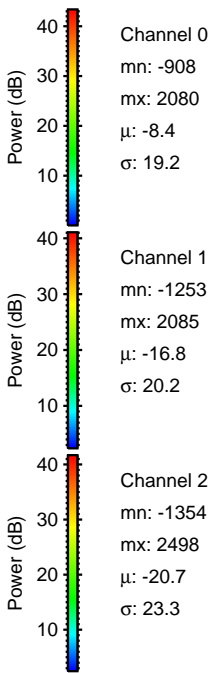
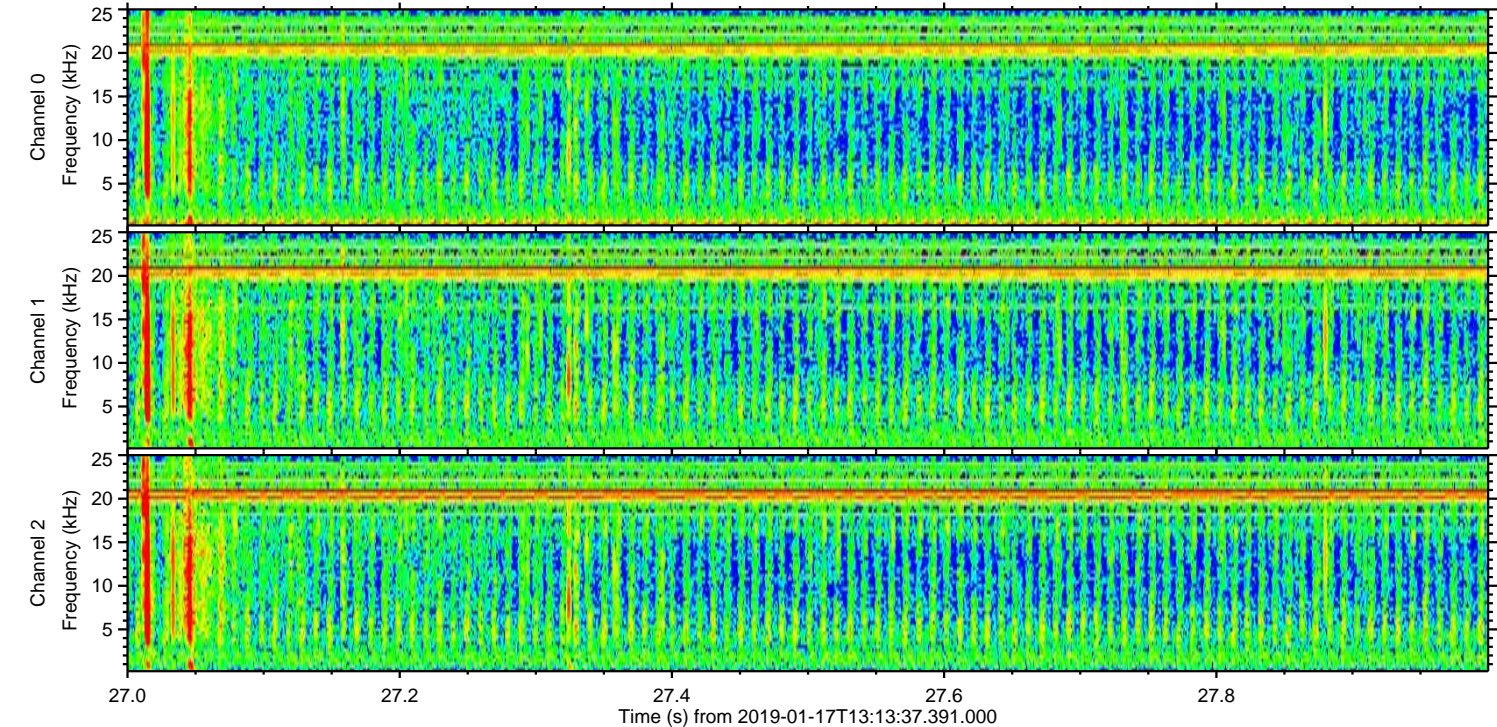
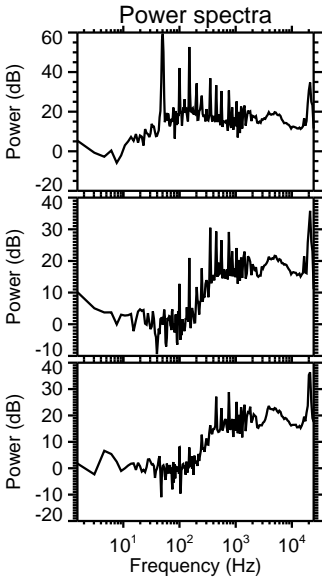
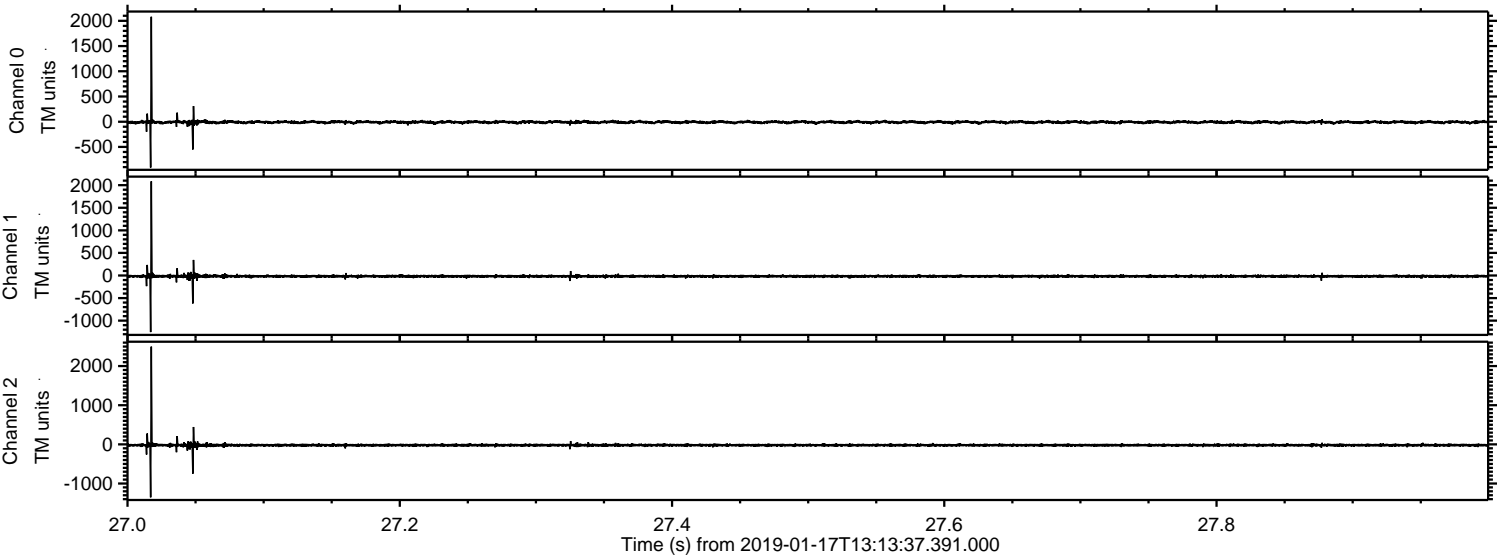


ELMAVAN 3D WAVEFORMS (Measured data sampled at 50 kHz) 51000 packets of 144 samples from 2019-01-17T13:13:37.391.000.

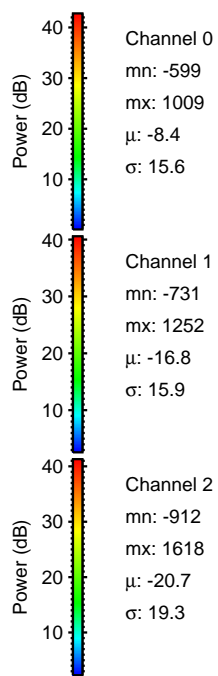
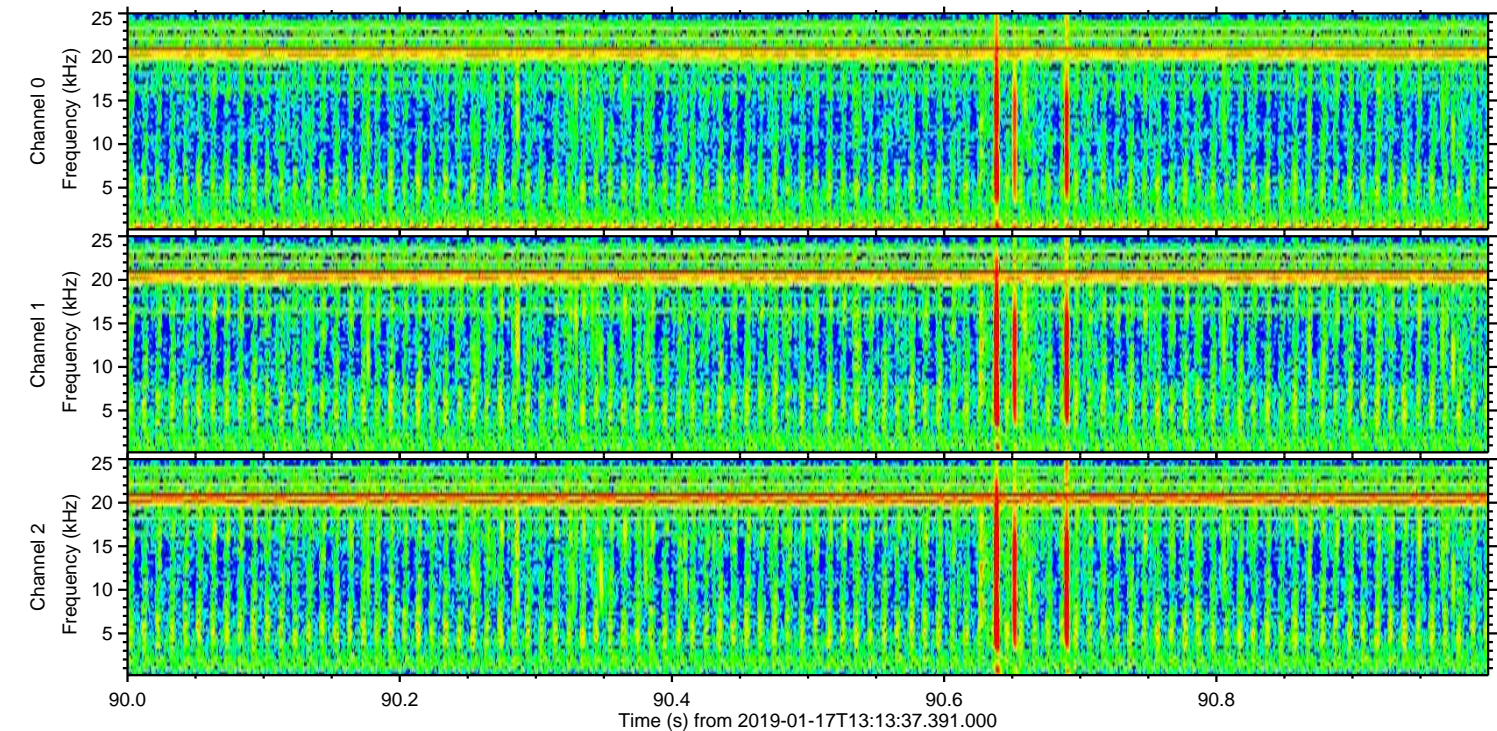
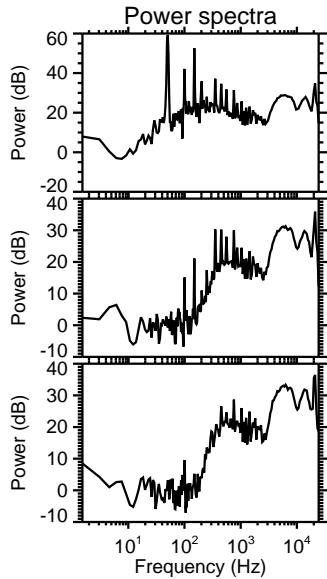
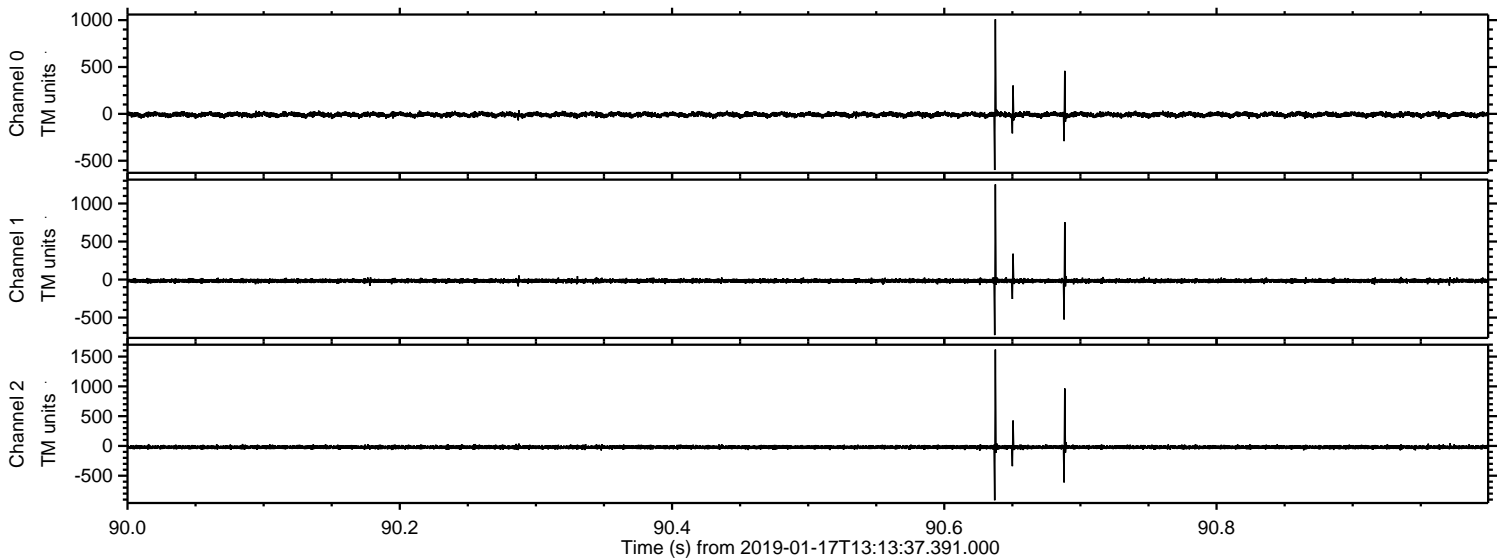
Processed Thu Jan 17 14:21:44 2019 by ELM ver.2012-10-06 from 001__elm20190117_131336__dat00.bin



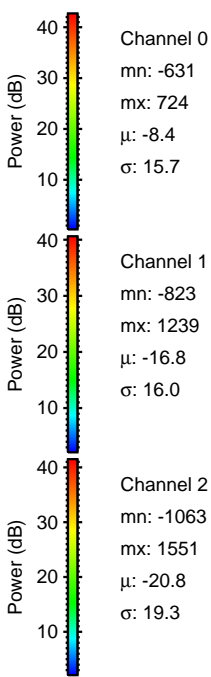
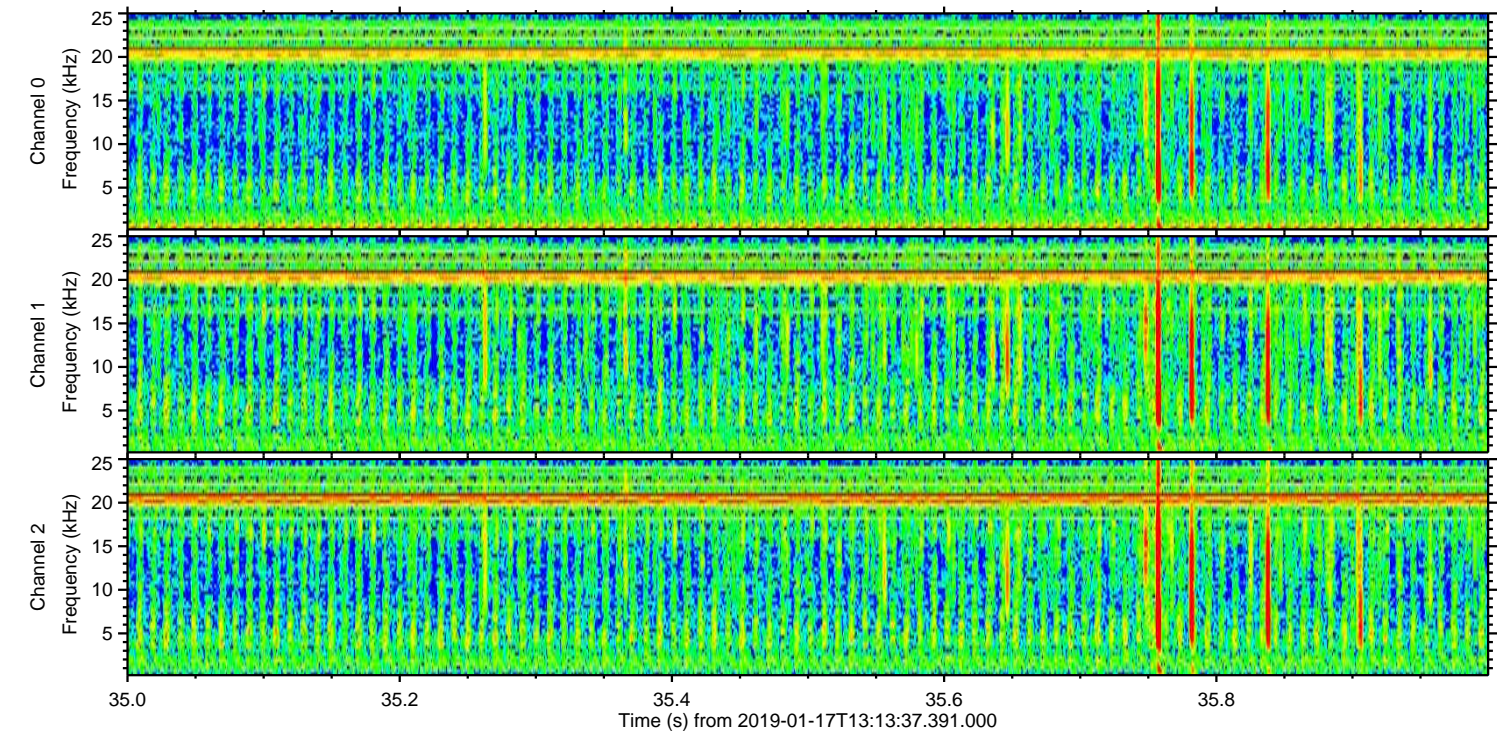
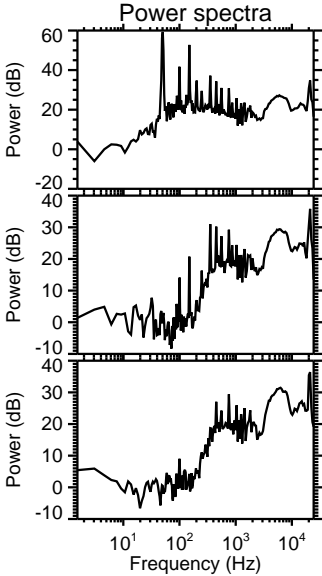
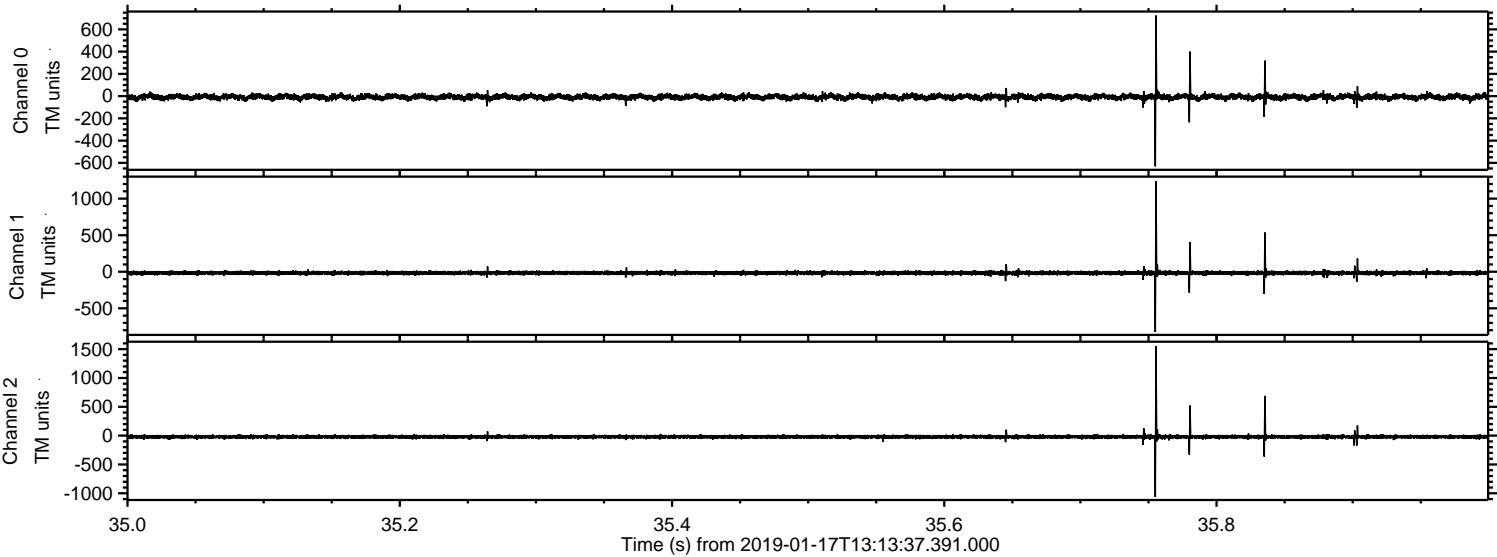
Processed Thu Jan 17 14:21:50 2019 by ELM ver.2012-10-06 from 001__elm20190117_131336__dat00.bin



Processed Thu Jan 17 14:21:51 2019 by ELM ver.2012-10-06 from 001__elm20190117_131336__dat00.bin



Processed Thu Jan 17 14:21:52 2019 by ELM ver.2012-10-06 from 001__elm20190117_131336__dat00.bin



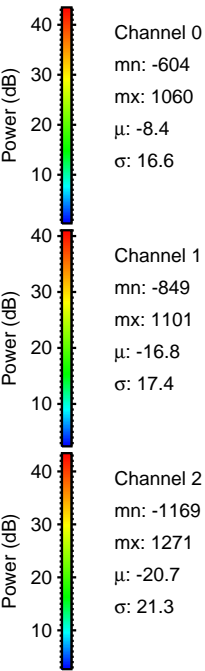
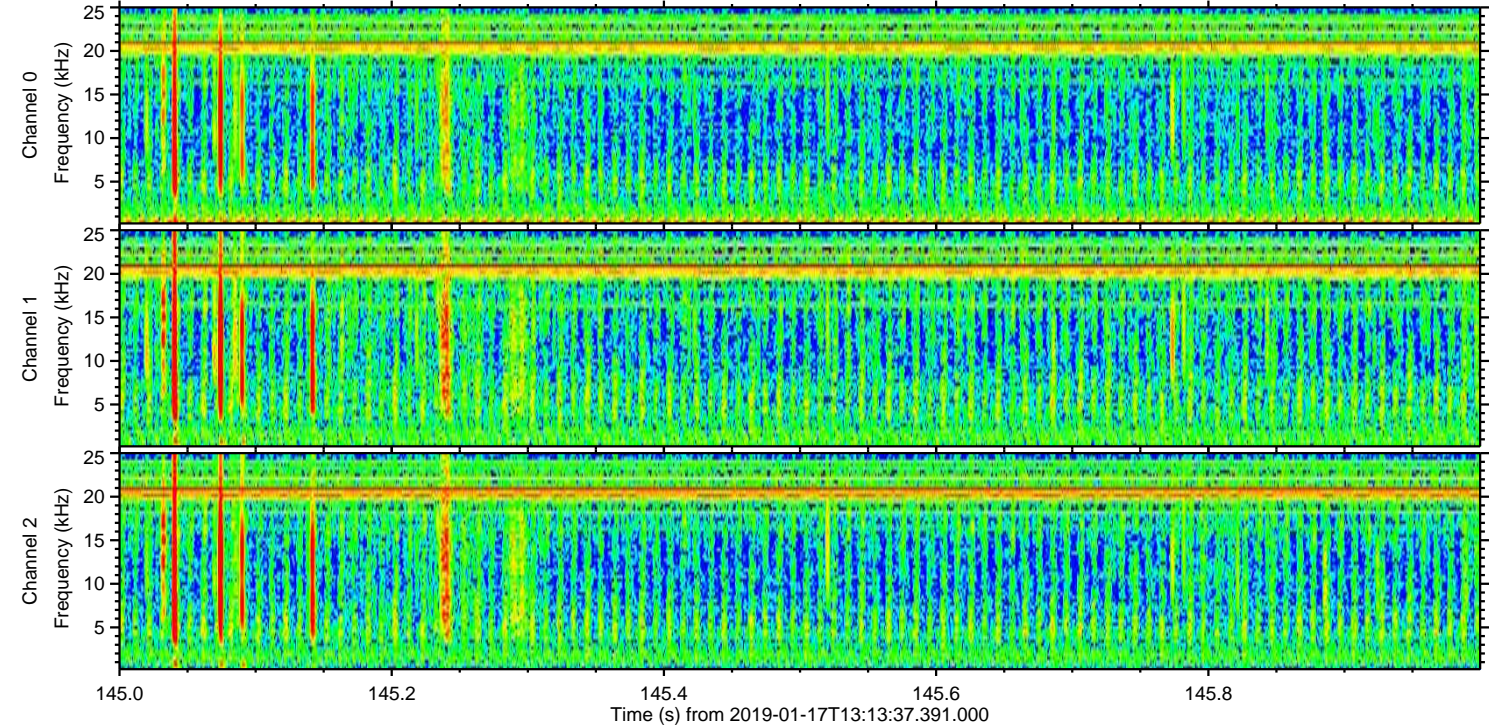
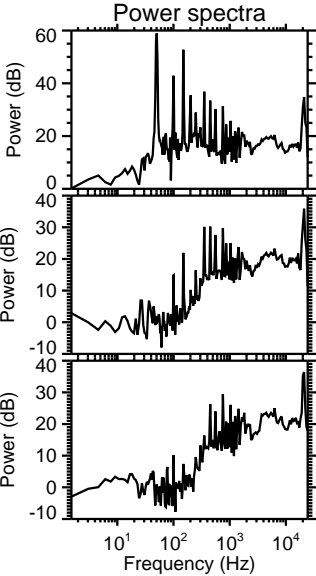
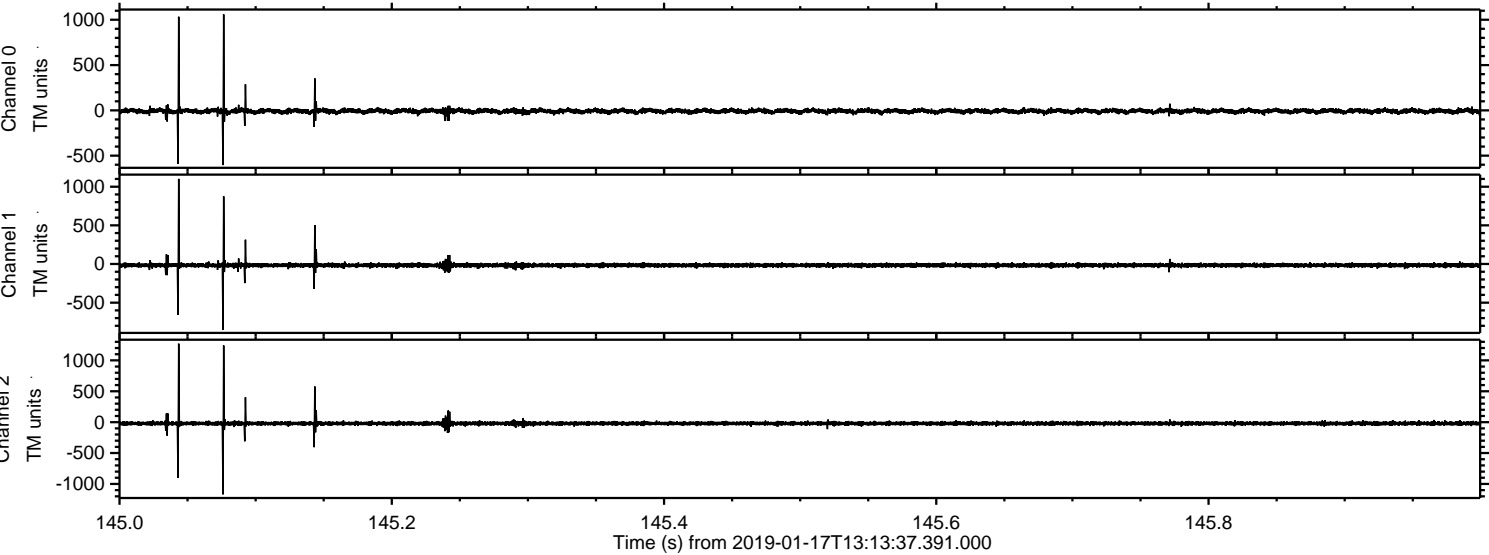
Channel 0
mn: -631
mx: 724
 μ : -8.4
 σ : 15.7

Channel 1
mn: -823
mx: 1239
 μ : -16.8
 σ : 16.0

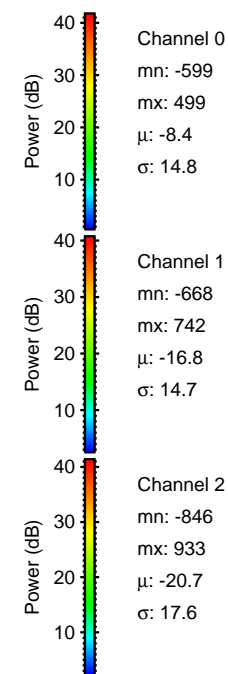
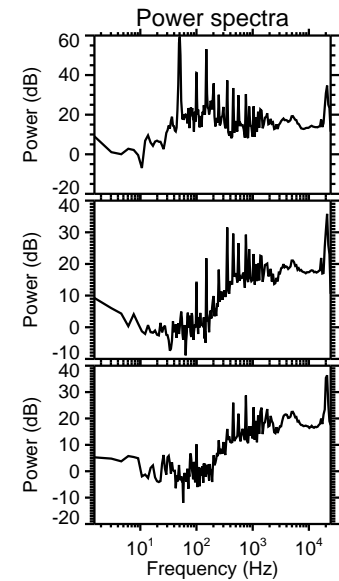
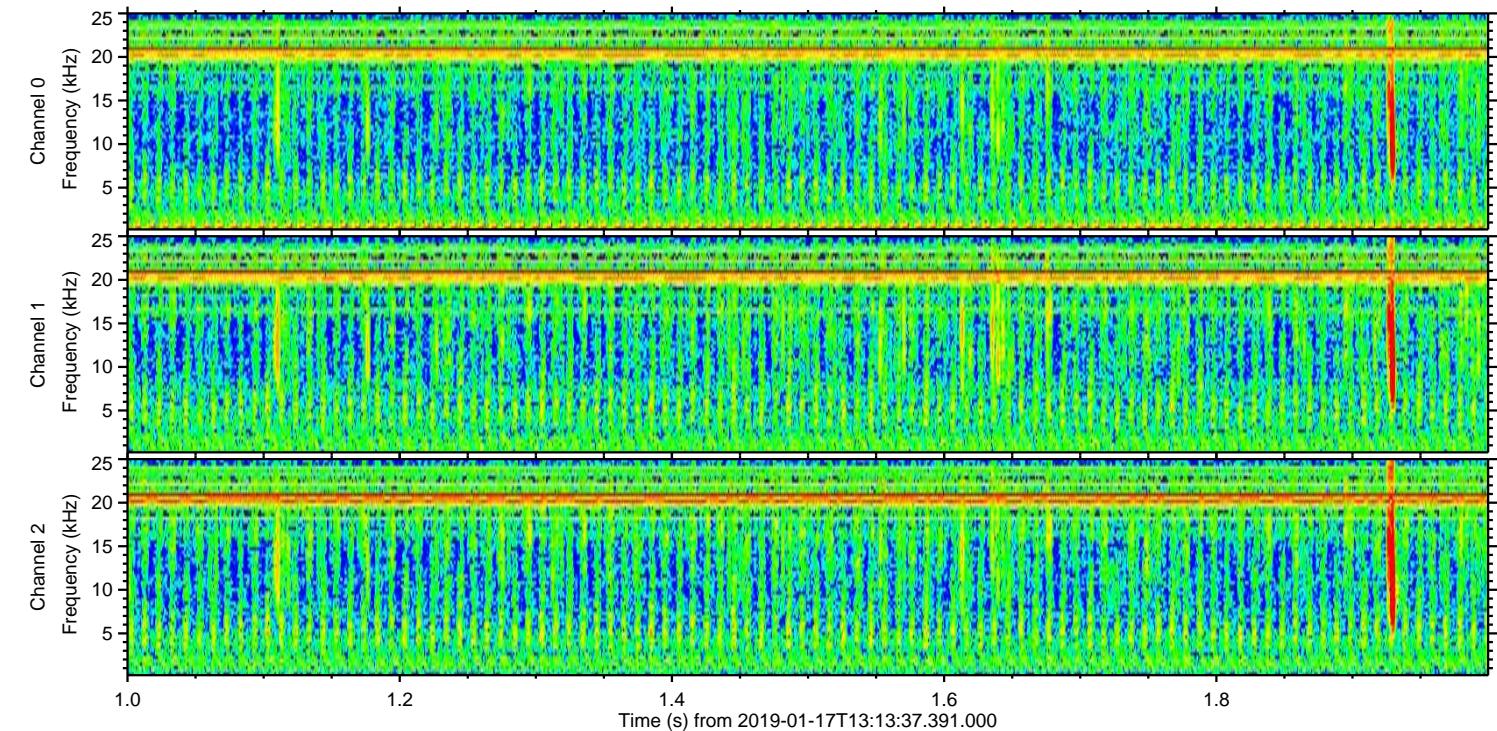
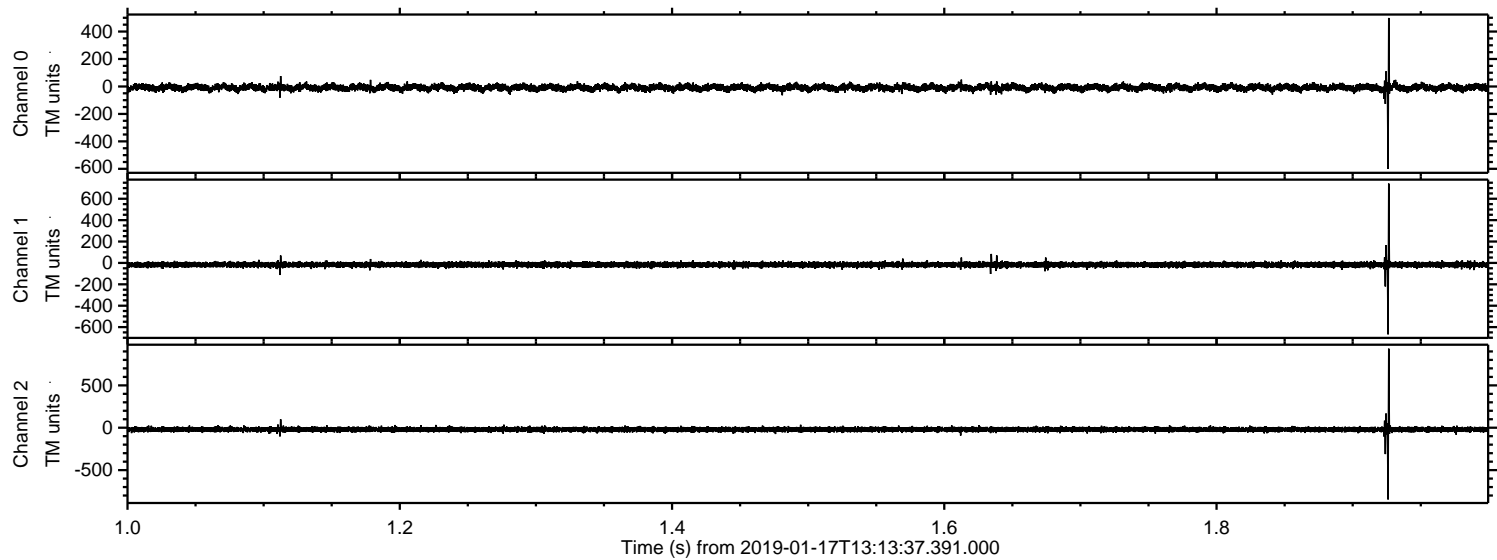
Channel 2
mn: -1063
mx: 1551
 μ : -20.8
 σ : 19.3

ELMAVAN 3D WAVEFORMS (Measured data sampled at 50 kHz) 51000 packets of 144 samples from 2019-01-17T13:13:37.391.000. Part 146/147

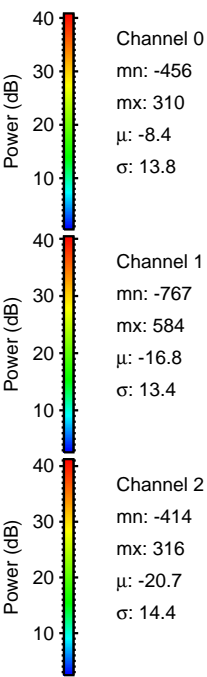
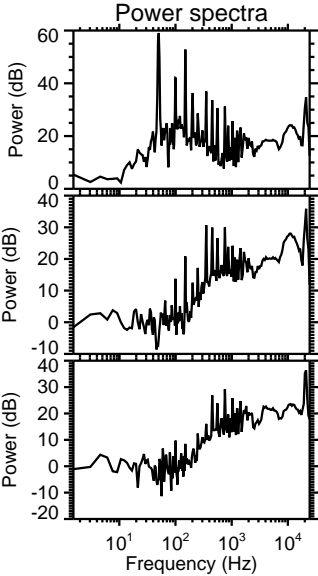
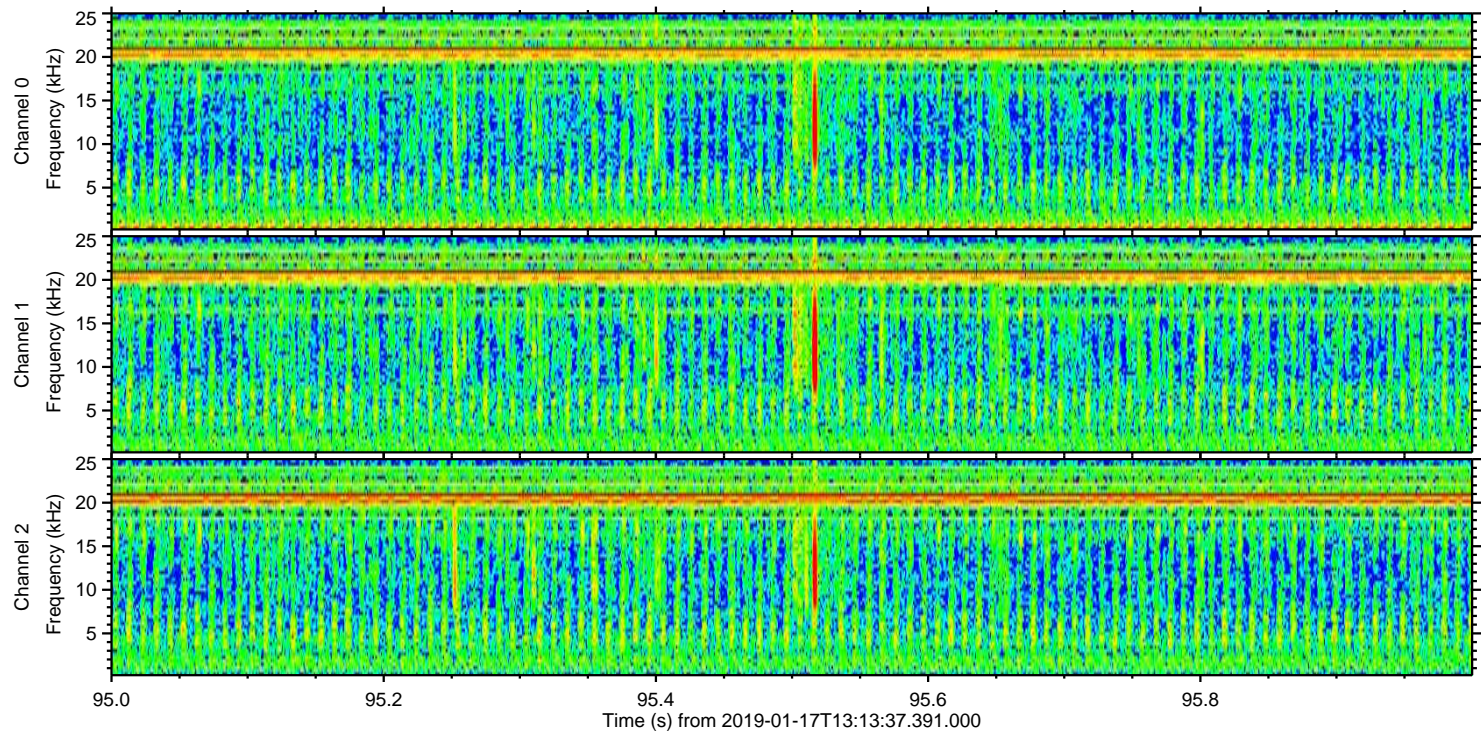
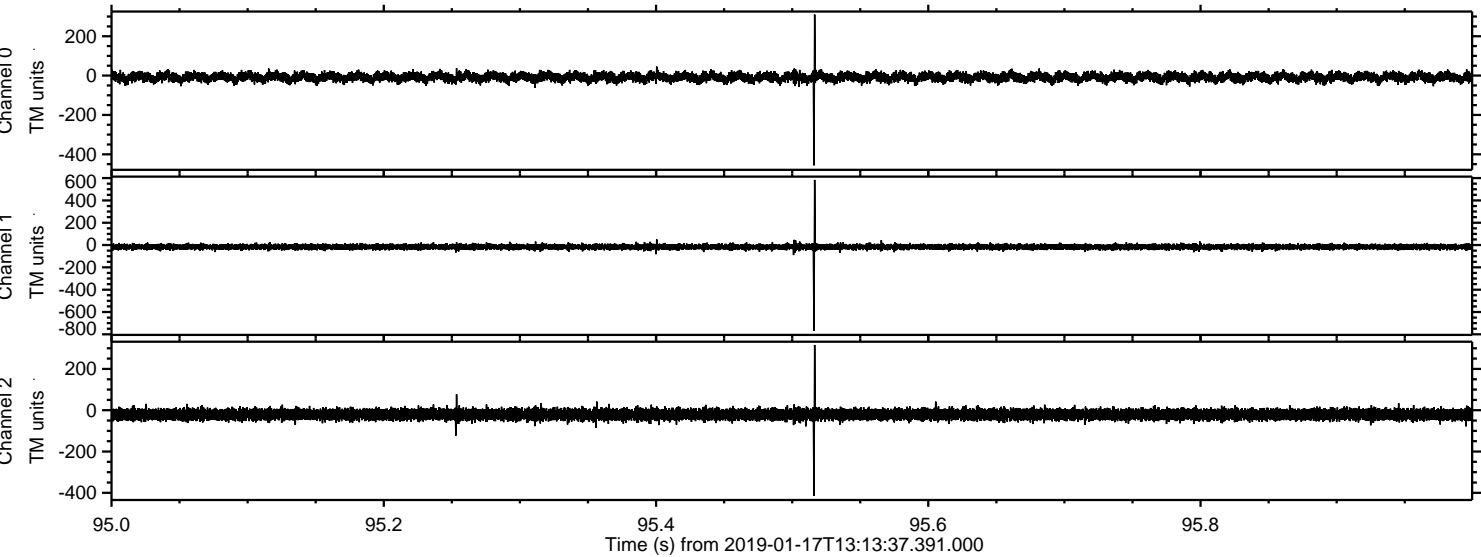
Processed Thu Jan 17 14:21:52 2019 by ELM ver.2012-10-06 from 001__elm20190117_131336__dat00.bin



Processed Thu Jan 17 14:21:53 2019 by ELM ver.2012-10-06 from 001__elm20190117_131336__dat00.bin

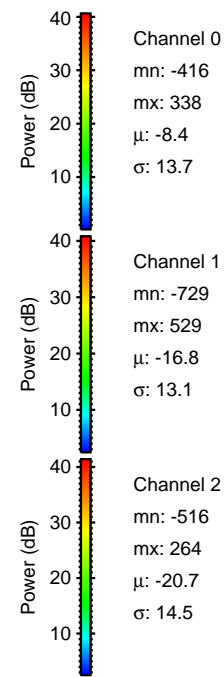
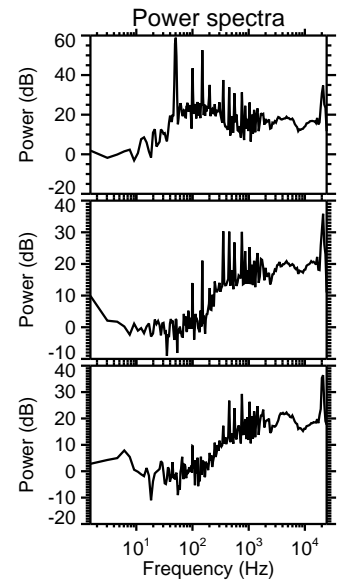
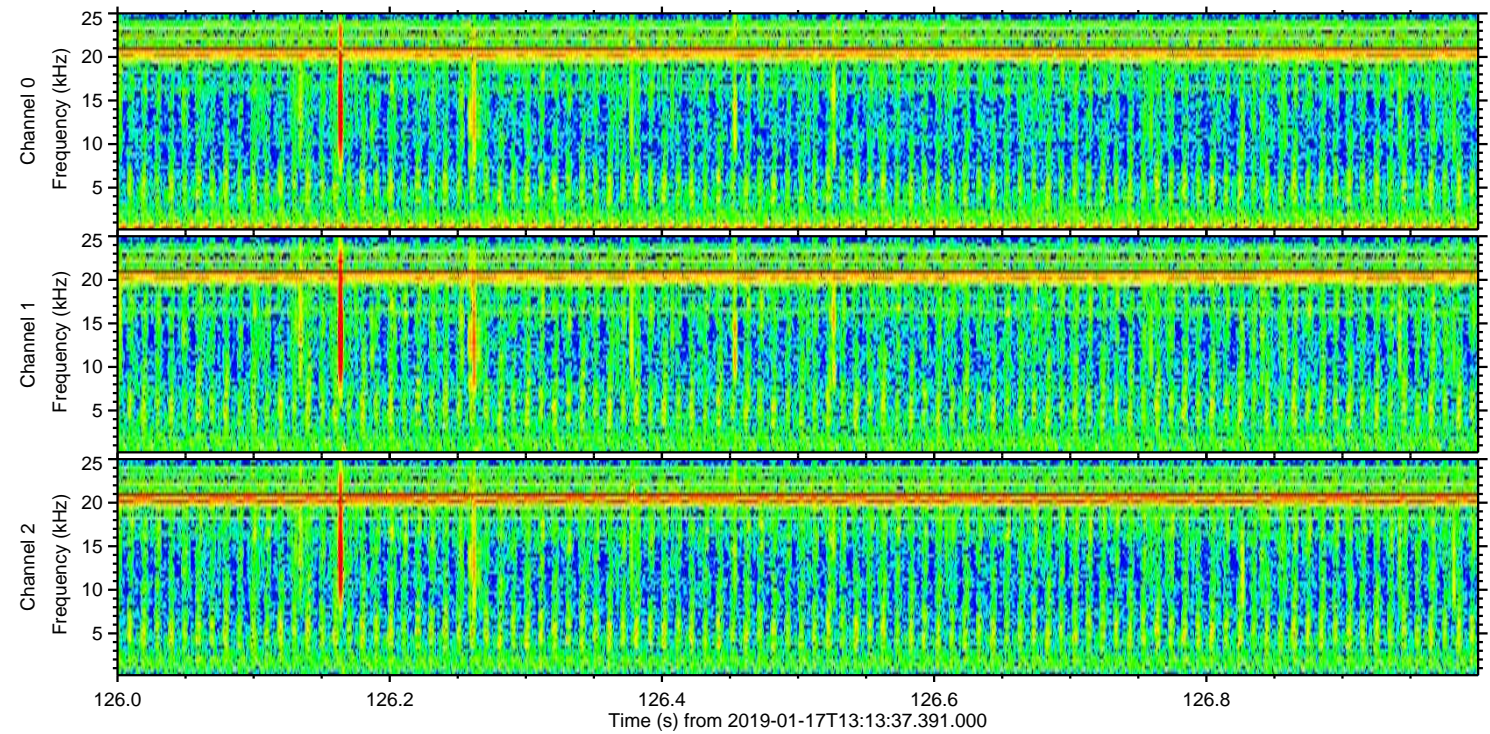
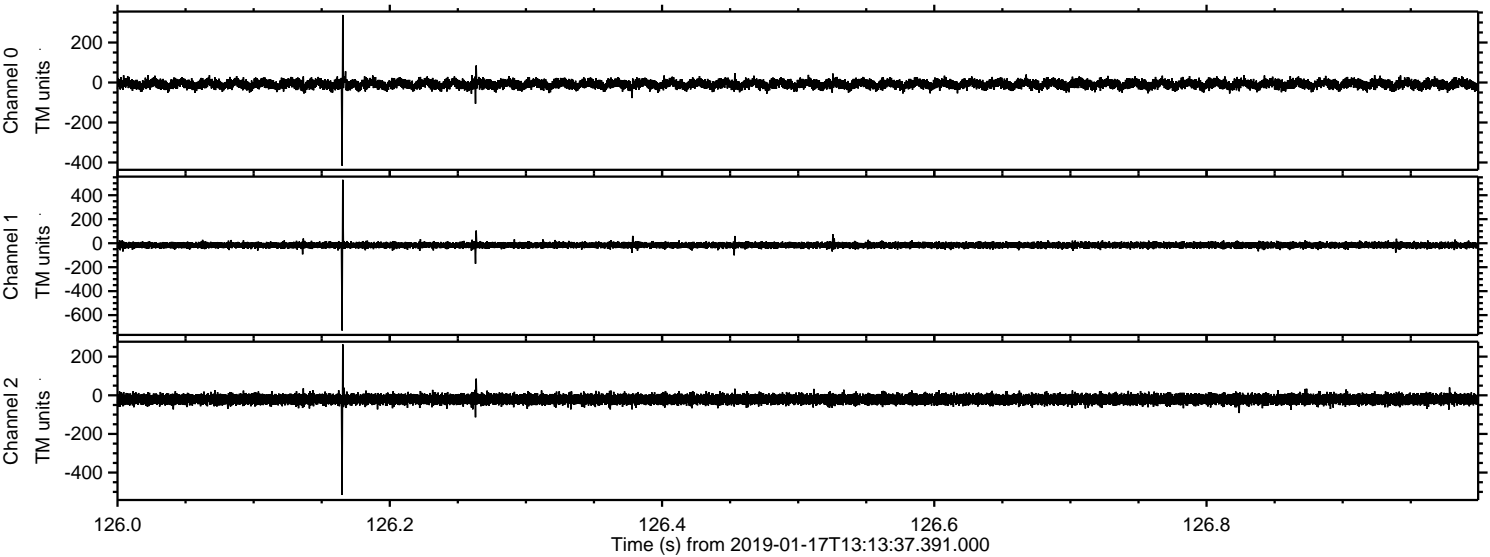


Processed Thu Jan 17 14:21:53 2019 by ELM ver.2012-10-06 from 001__elm20190117_131336__dat00.bin



ELMAVAN 3D WAVEFORMS (Measured data sampled at 50 kHz) 51000 packets of 144 samples from 2019-01-17T13:13:37.391.000. Part 127/147

Processed Thu Jan 17 14:21:54 2019 by ELM ver.2012-10-06 from 001__elm20190117_131336__dat00.bin

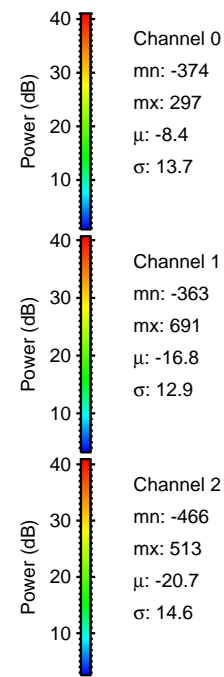
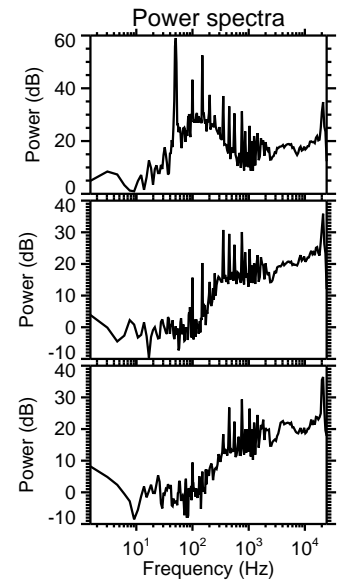
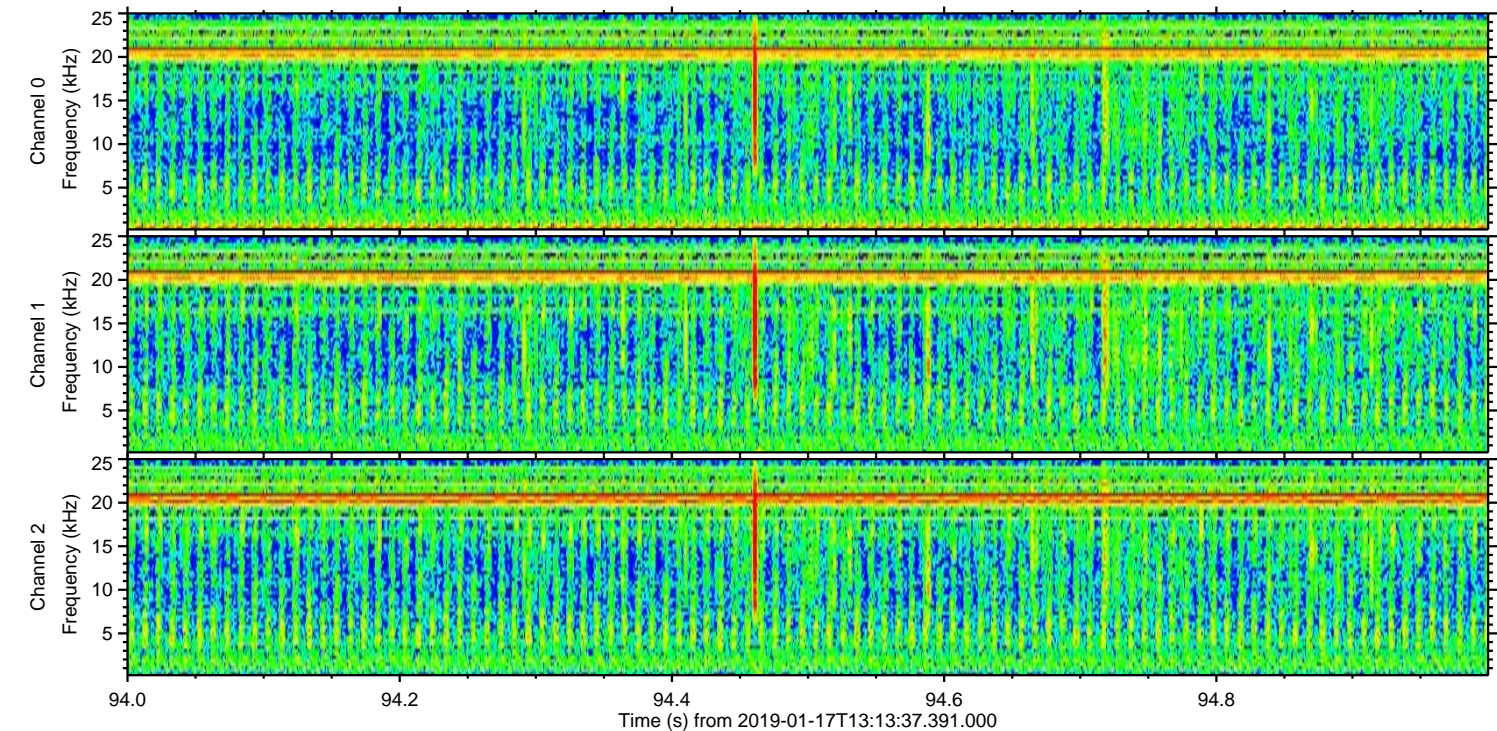
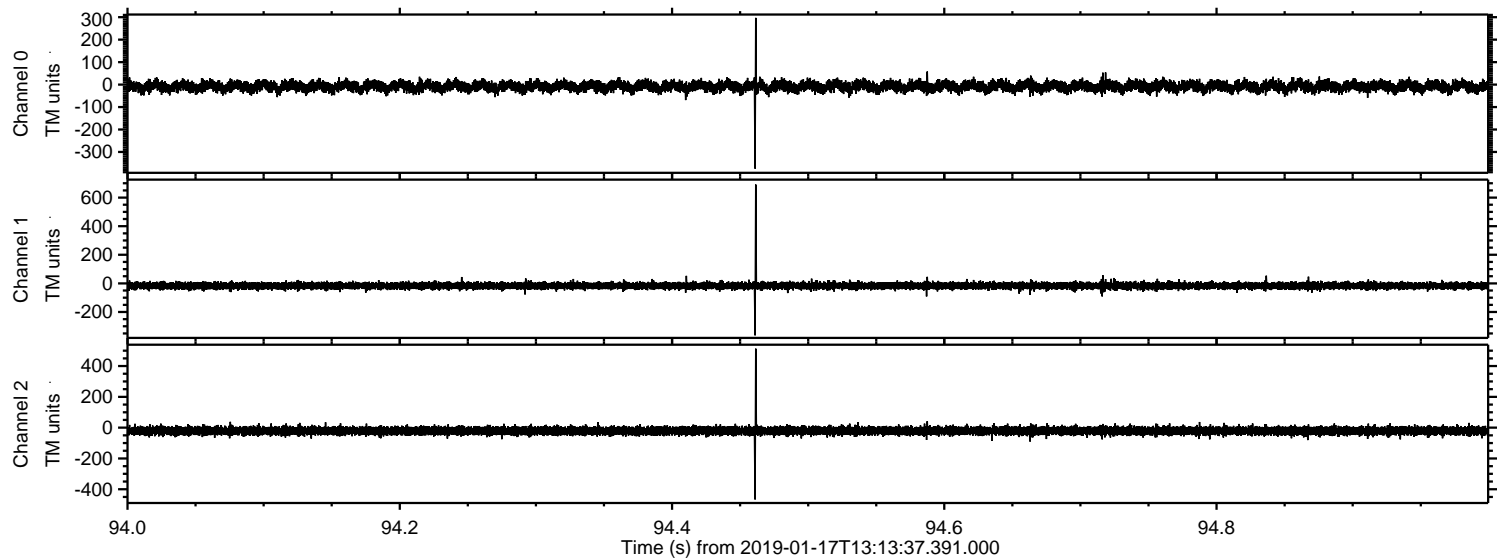


Channel 0
mn: -416
mx: 338
 μ : -8.4
 σ : 13.7

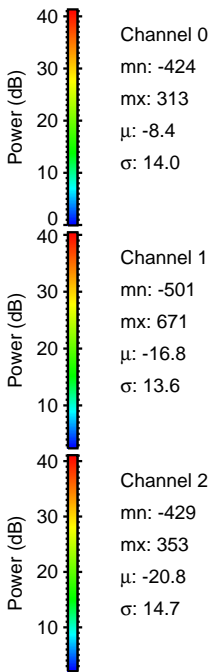
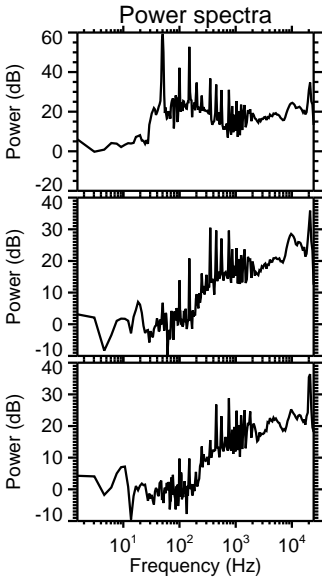
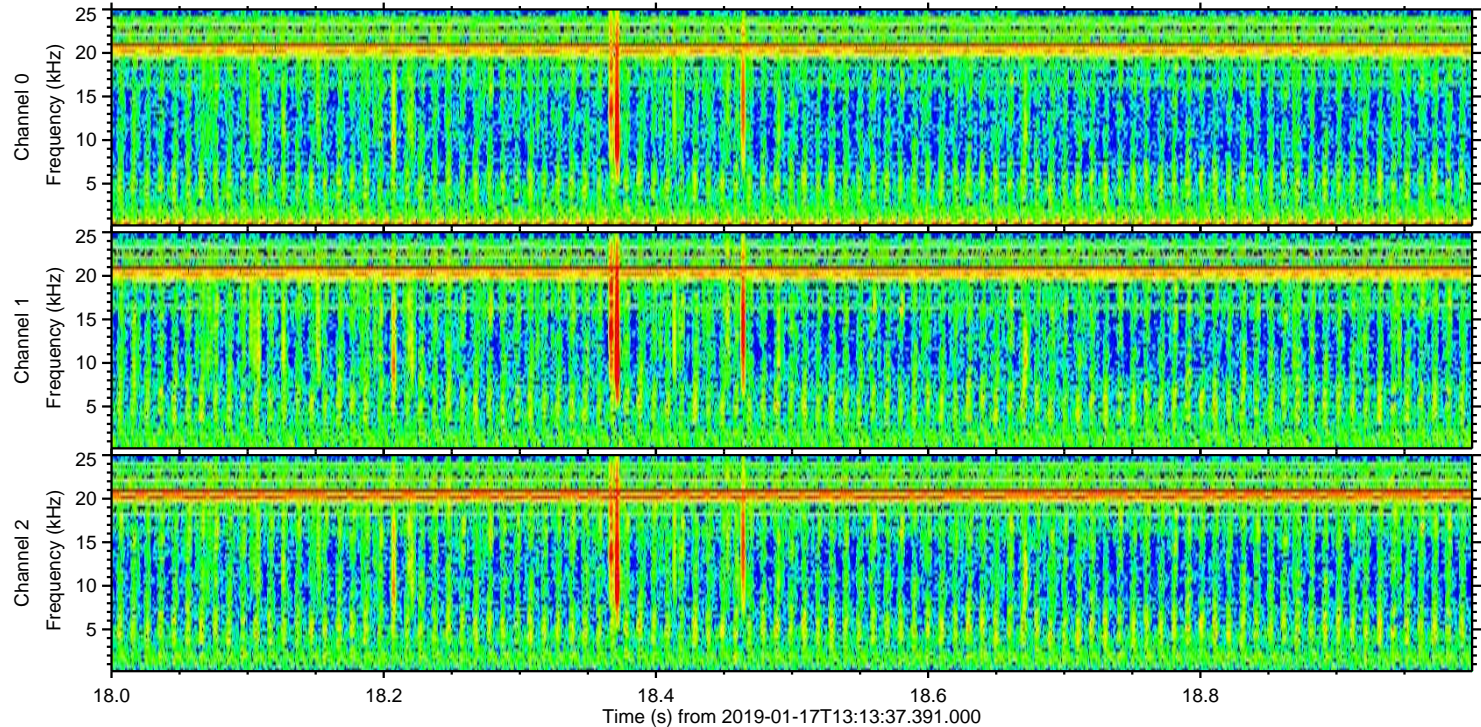
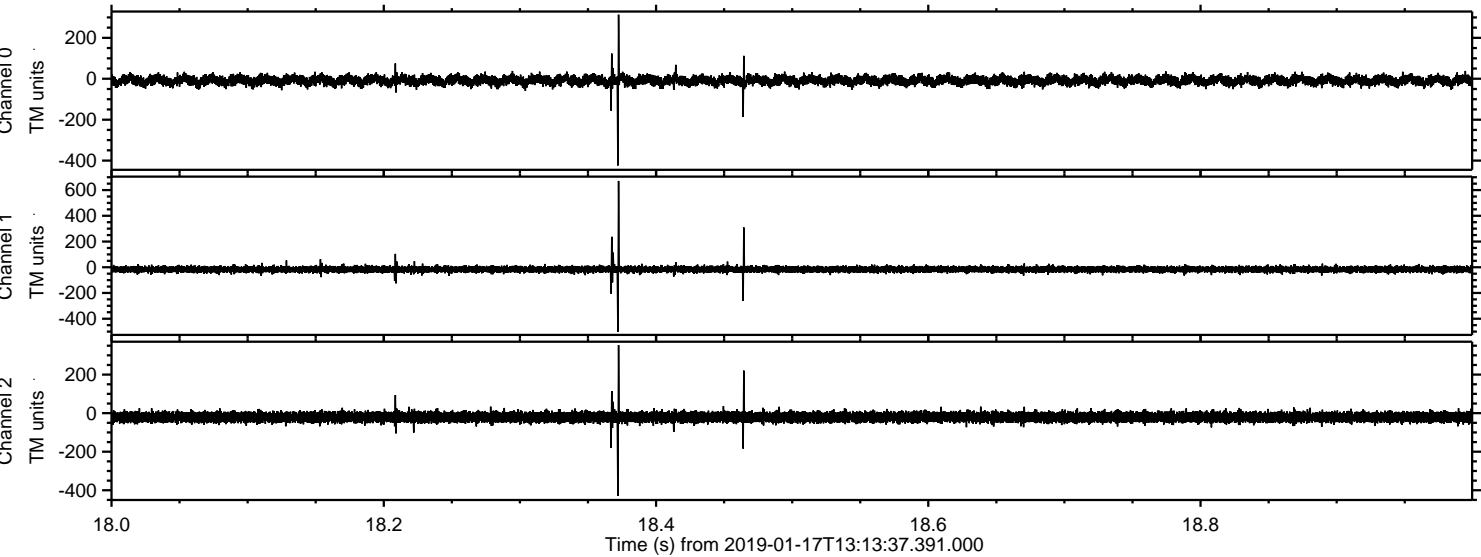
Channel 1
mn: -729
mx: 529
 μ : -16.8
 σ : 13.1

Channel 2
mn: -516
mx: 264
 μ : -20.7
 σ : 14.5

Processed Thu Jan 17 14:21:55 2019 by ELM ver.2012-10-06 from 001__elm20190117_131336__dat00.bin



Processed Thu Jan 17 14:21:55 2019 by ELM ver.2012-10-06 from 001__elm20190117_131336__dat00.bin



Channel 0
mn: -424
mx: 313
 μ : -8.4
 σ : 14.0

Channel 1
mn: -501
mx: 671
 μ : -16.8
 σ : 13.6

Channel 2
mn: -429
mx: 353
 μ : -20.8
 σ : 14.7

Processed Thu Jan 17 14:21:56 2019 by ELM ver.2012-10-06 from 001__elm20190117_131336__dat00.bin

