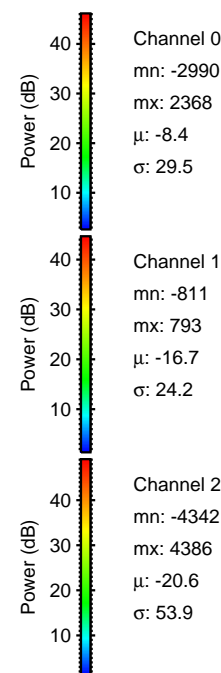
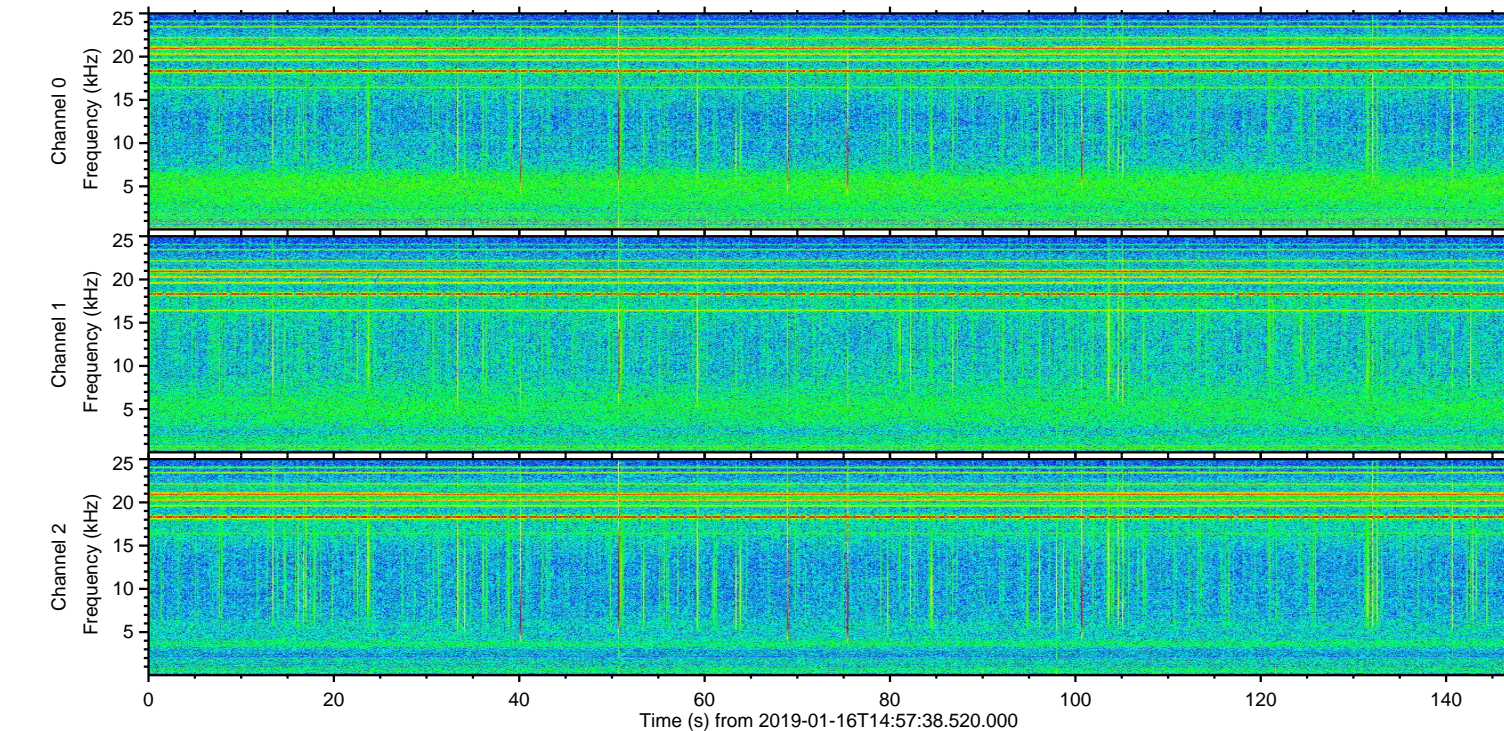
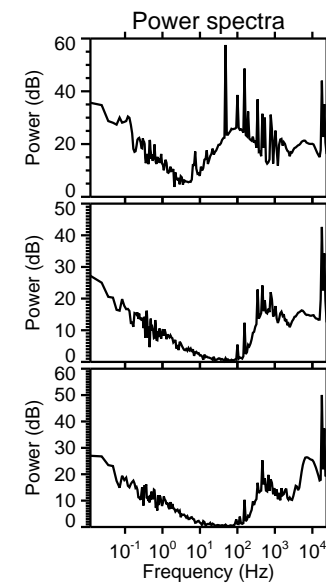
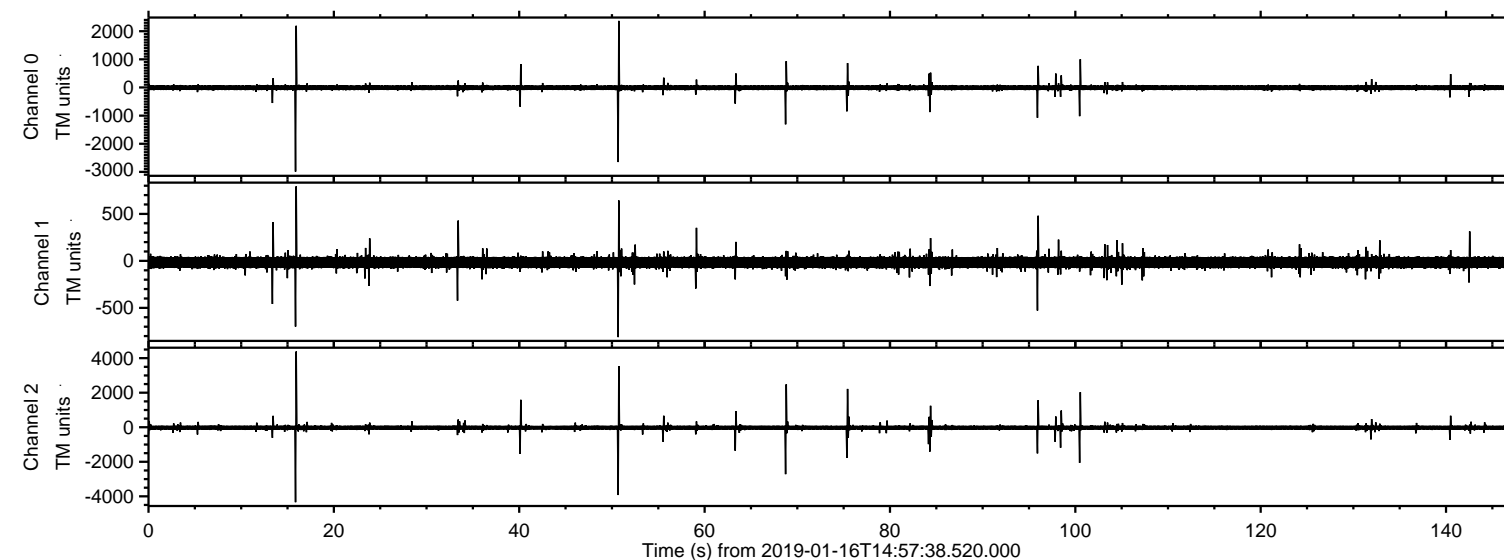
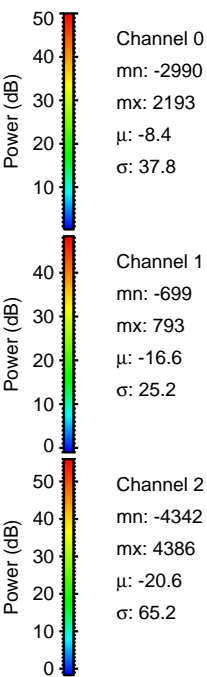
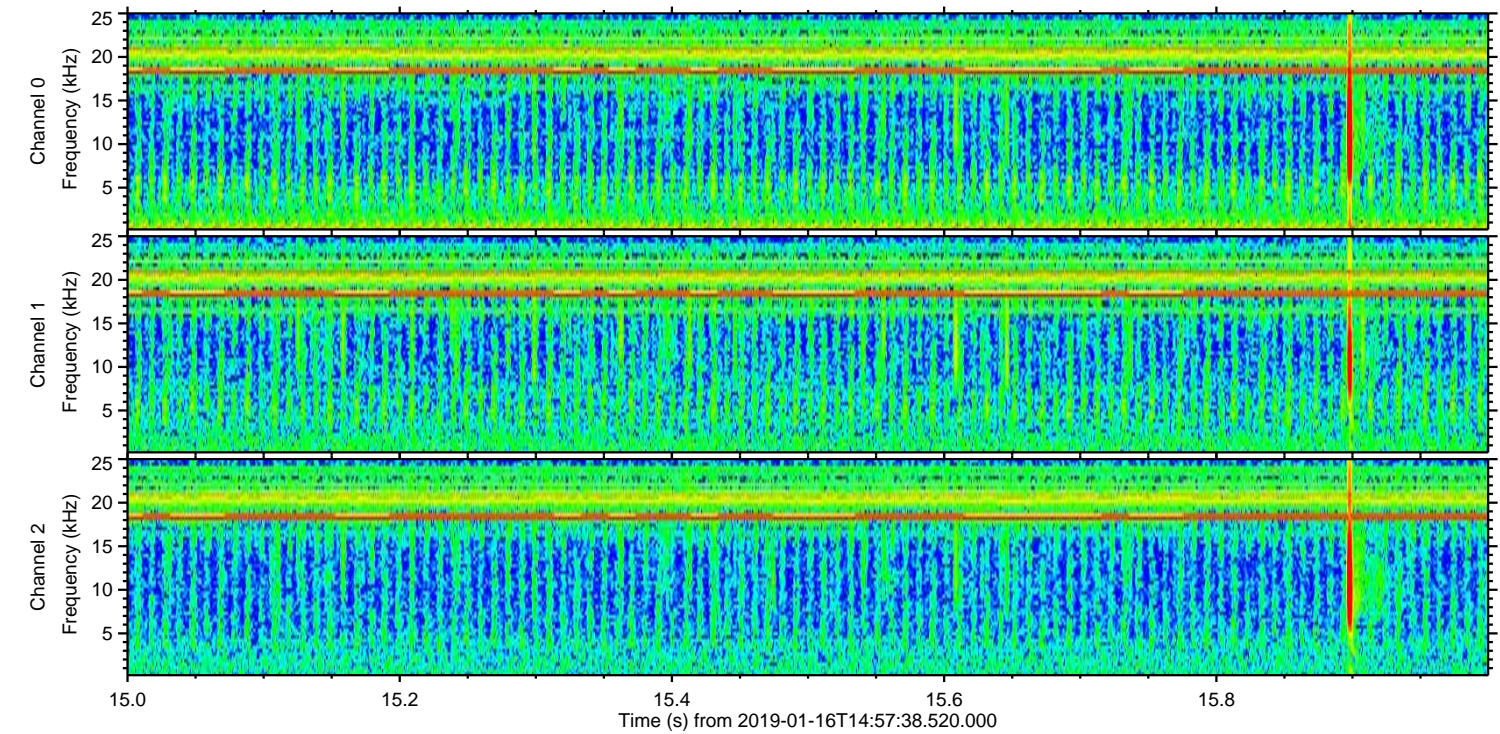
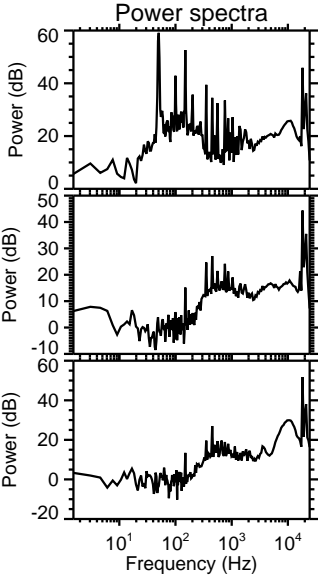
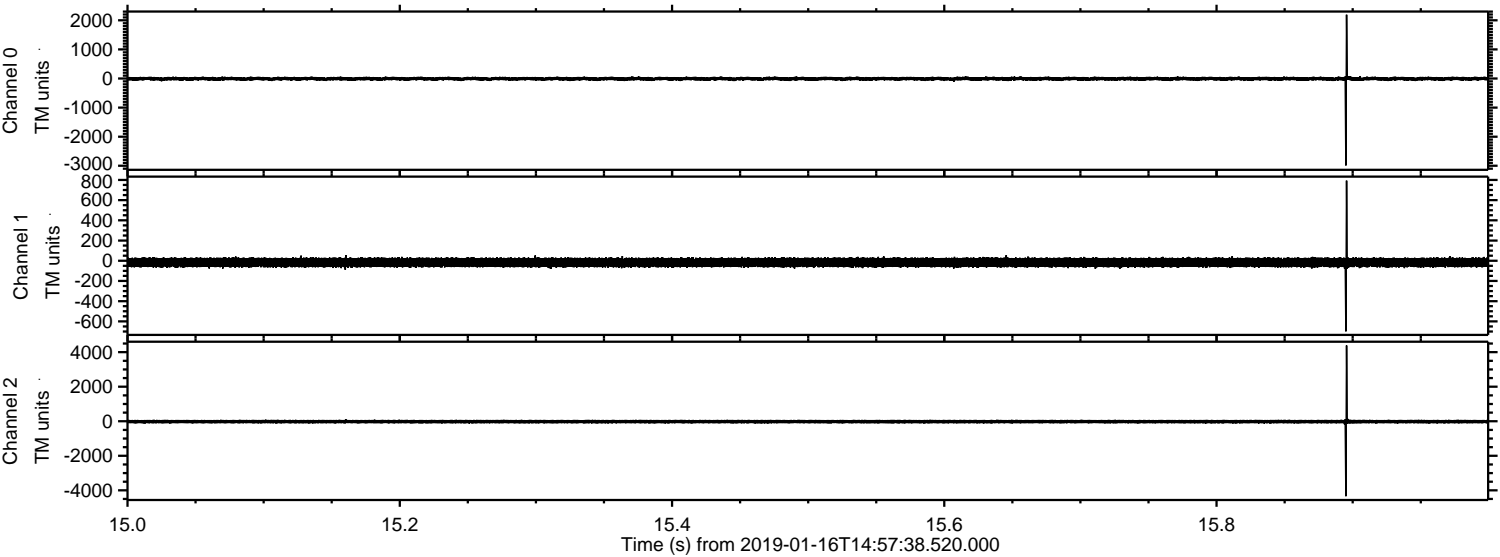


# ELMAVAN 3D WAVEFORMS (Measured data sampled at 50 kHz) 51000 packets of 144 samples from 2019-01-16T14:57:38.520.000.

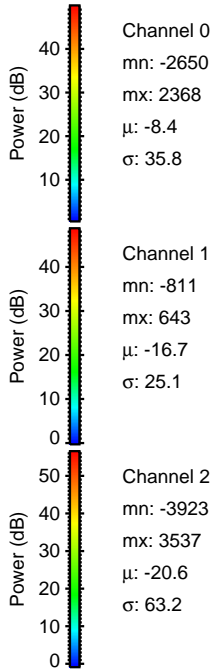
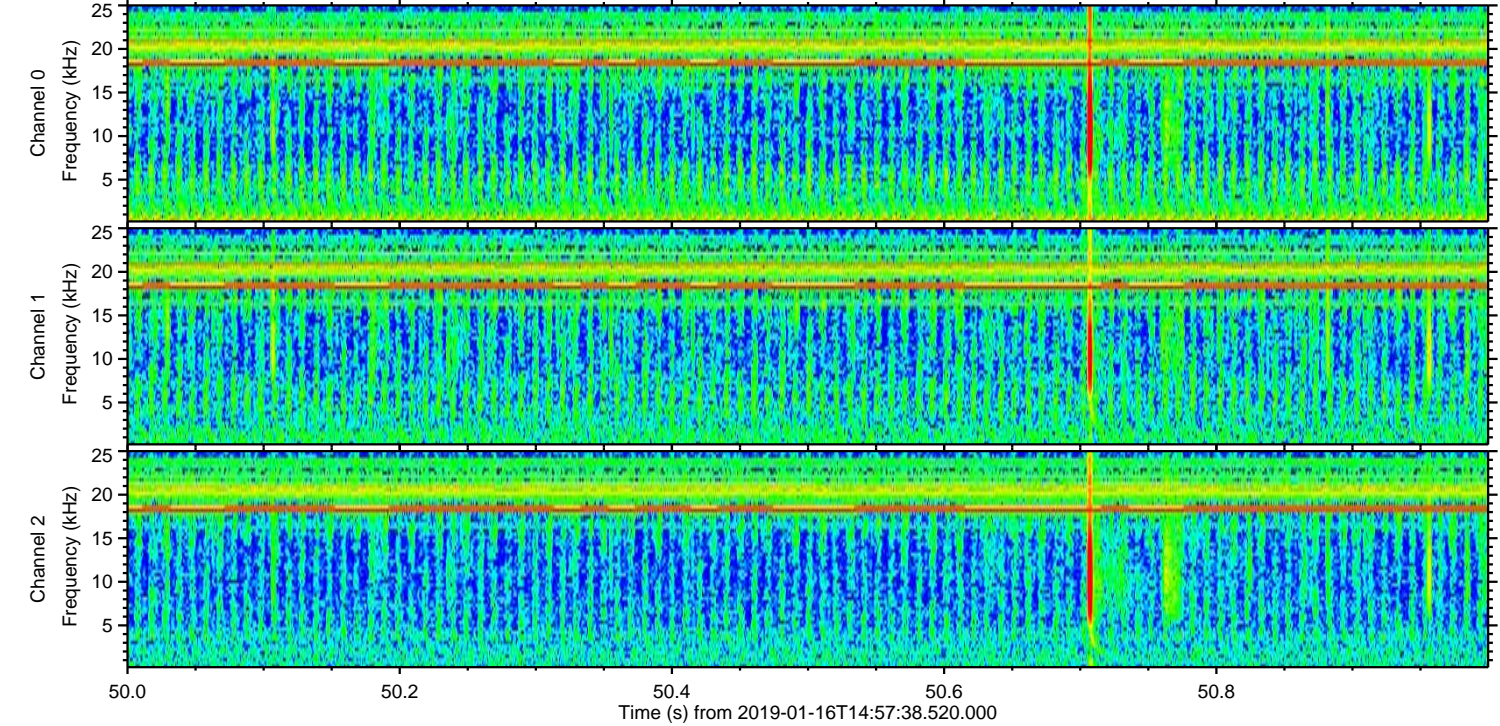
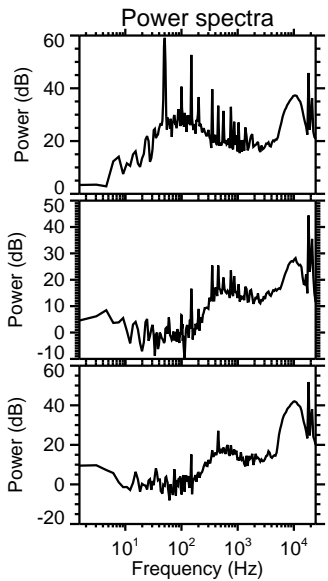
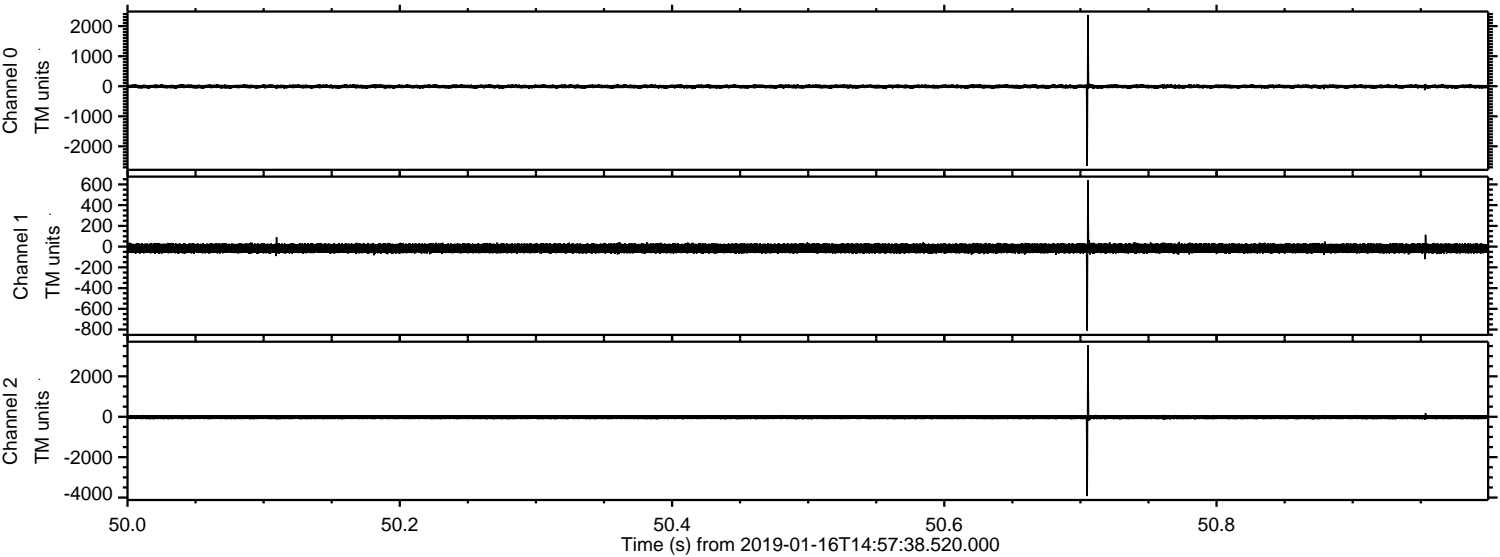
Processed Wed Jan 16 16:05:03 2019 by ELM ver.2012-10-06 from 001\_\_elm20190116\_145737\_\_dat00.bin



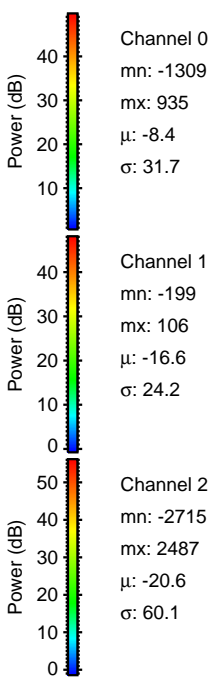
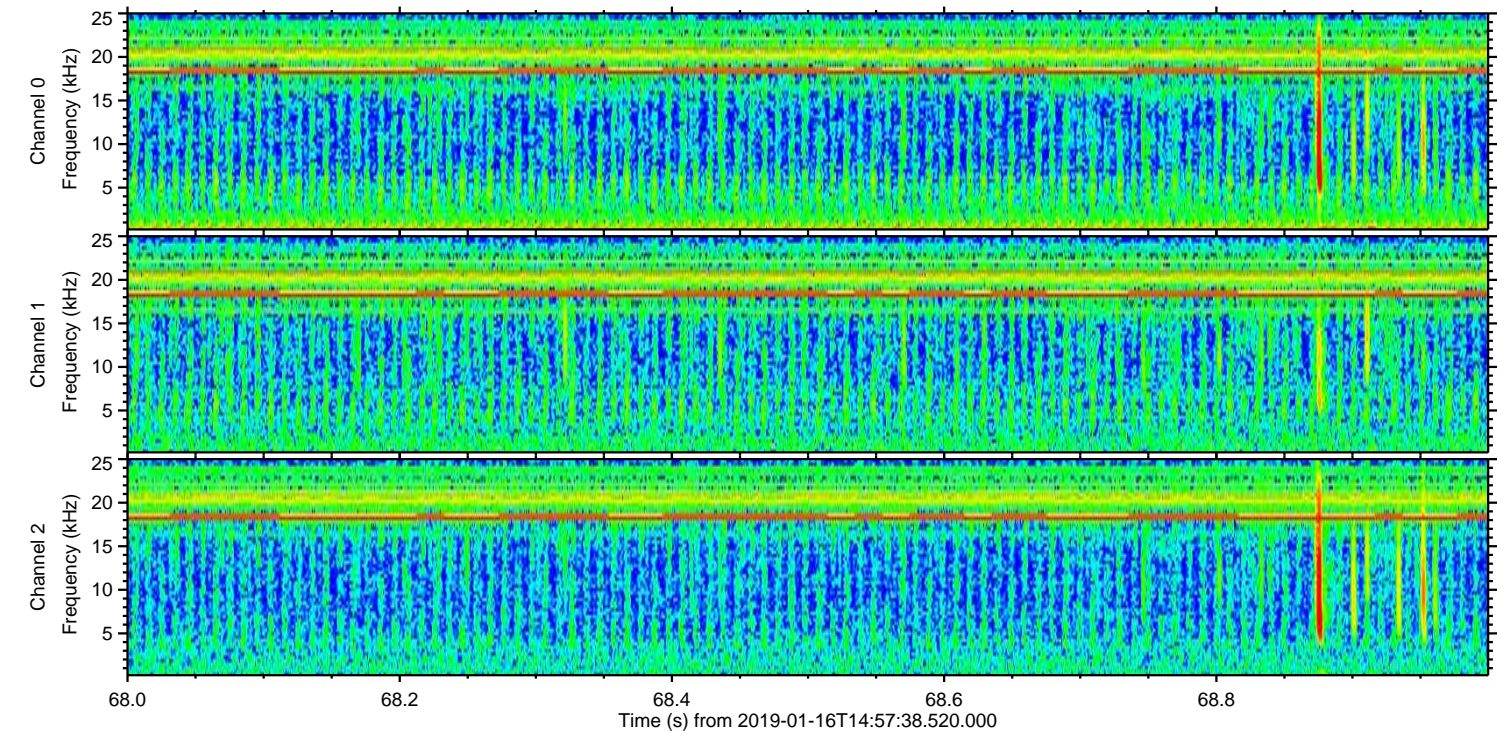
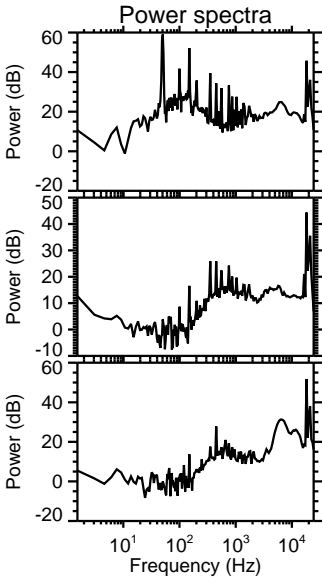
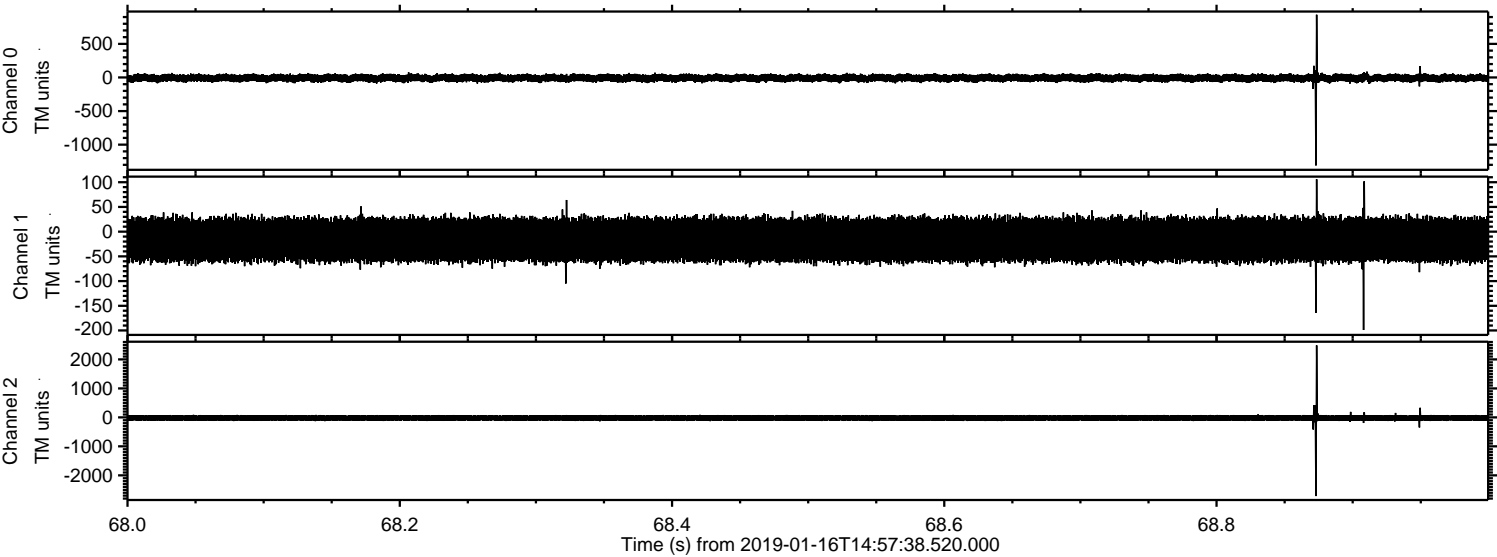
Processed Wed Jan 16 16:05:09 2019 by ELM ver.2012-10-06 from 001\_\_elm20190116\_145737\_\_dat00.bin



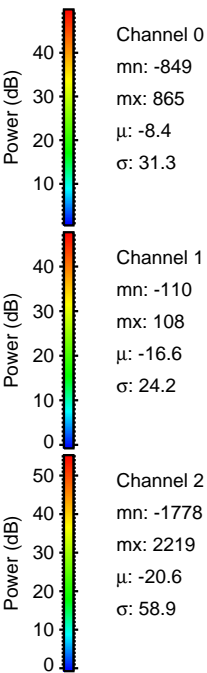
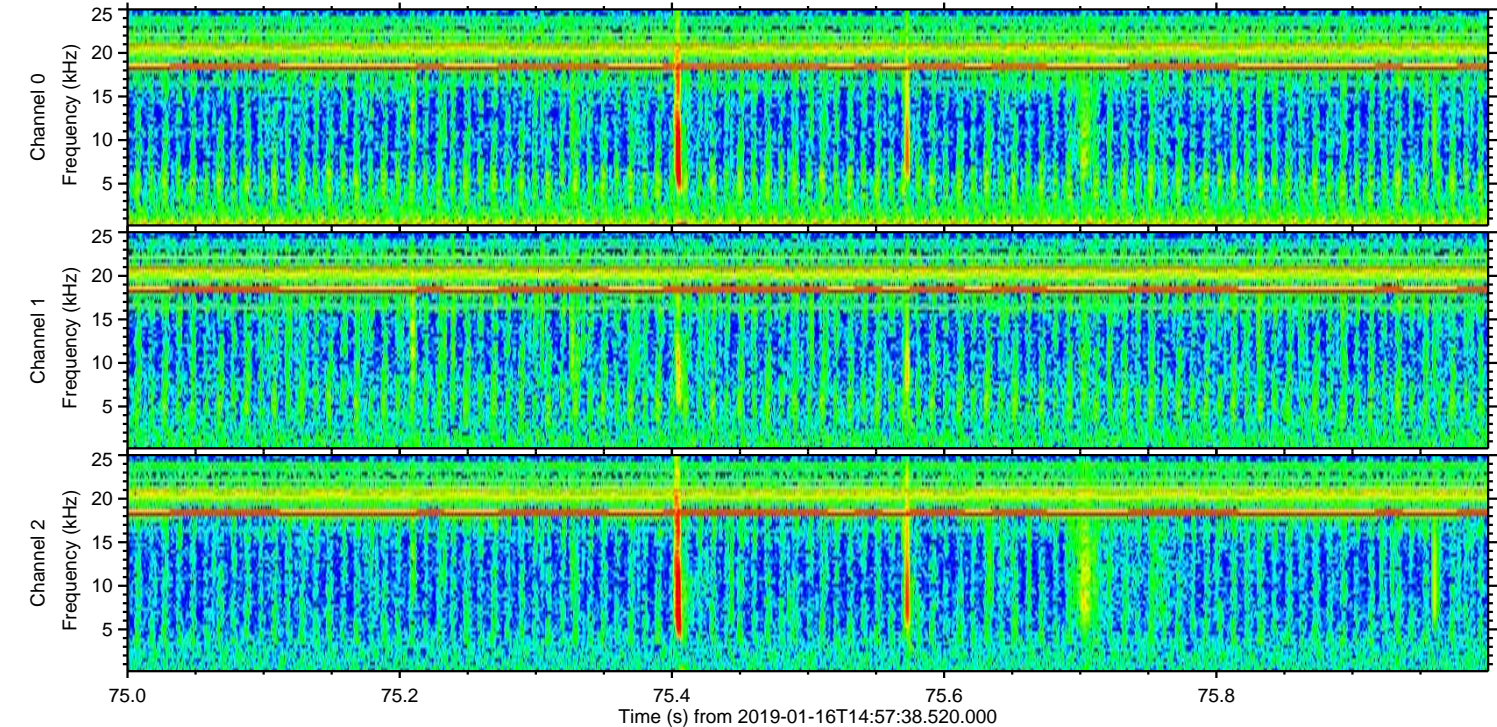
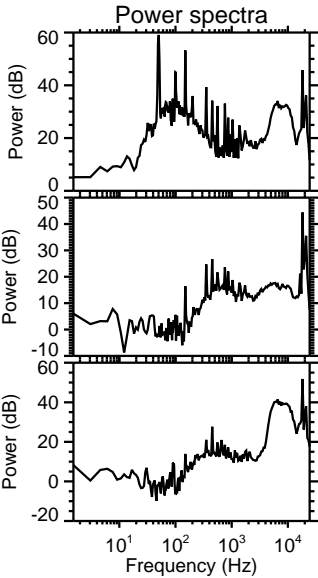
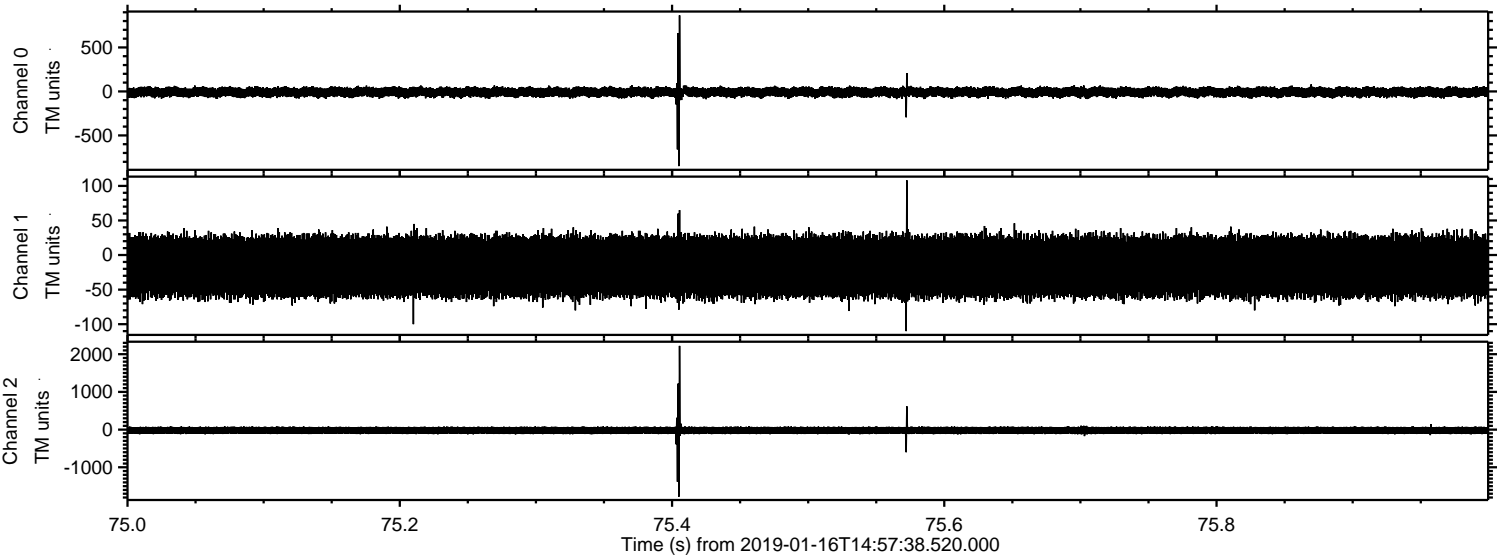
Processed Wed Jan 16 16:05:10 2019 by ELM ver.2012-10-06 from 001\_\_elm20190116\_145737\_\_dat00.bin



Processed Wed Jan 16 16:05:11 2019 by ELM ver.2012-10-06 from 001\_\_elm20190116\_145737\_\_dat00.bin

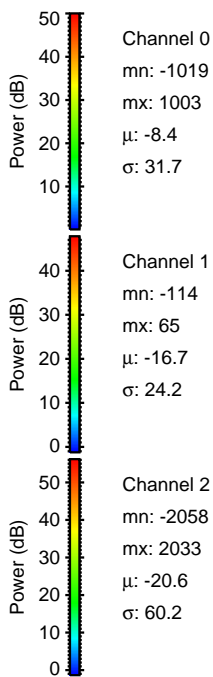
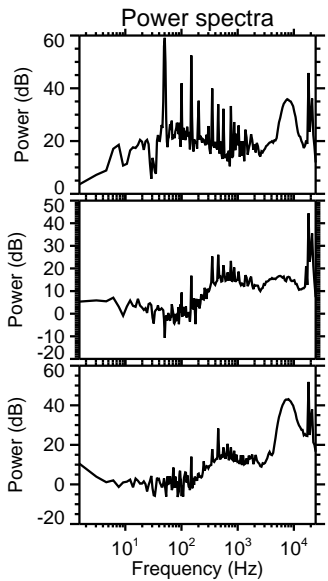
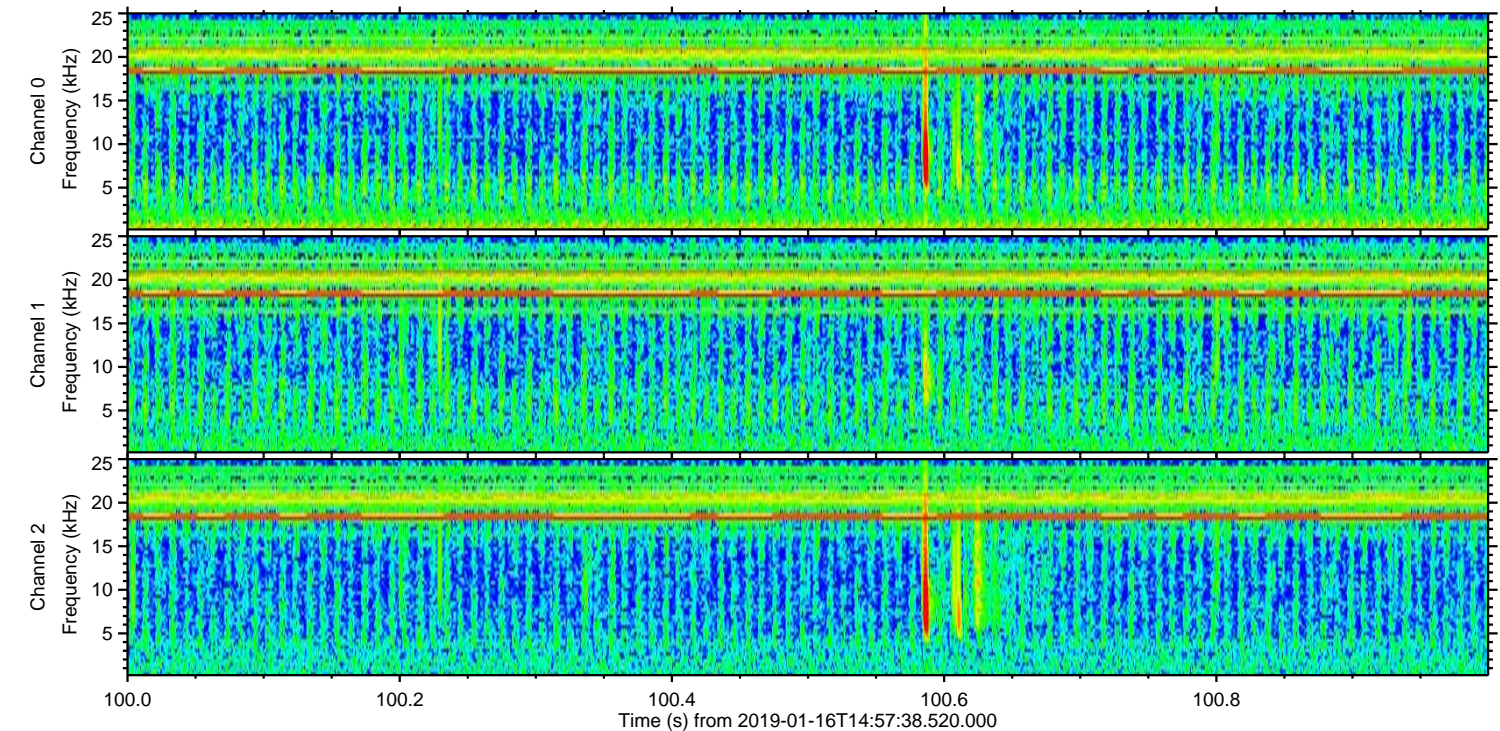
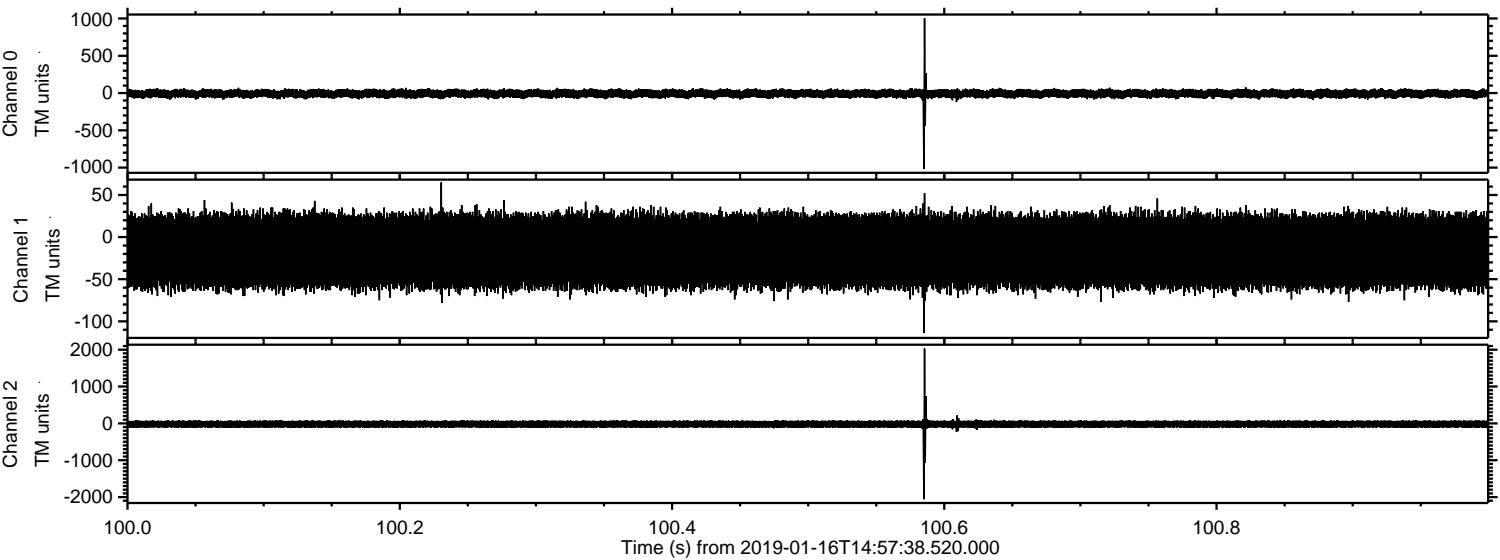


Processed Wed Jan 16 16:05:11 2019 by ELM ver.2012-10-06 from 001\_\_elm20190116\_145737\_\_dat00.bin

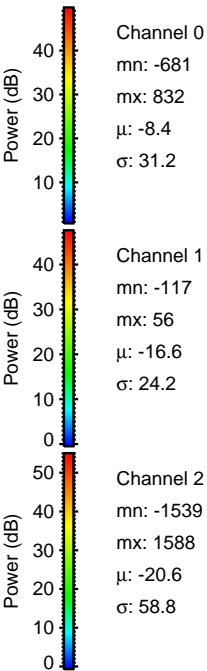
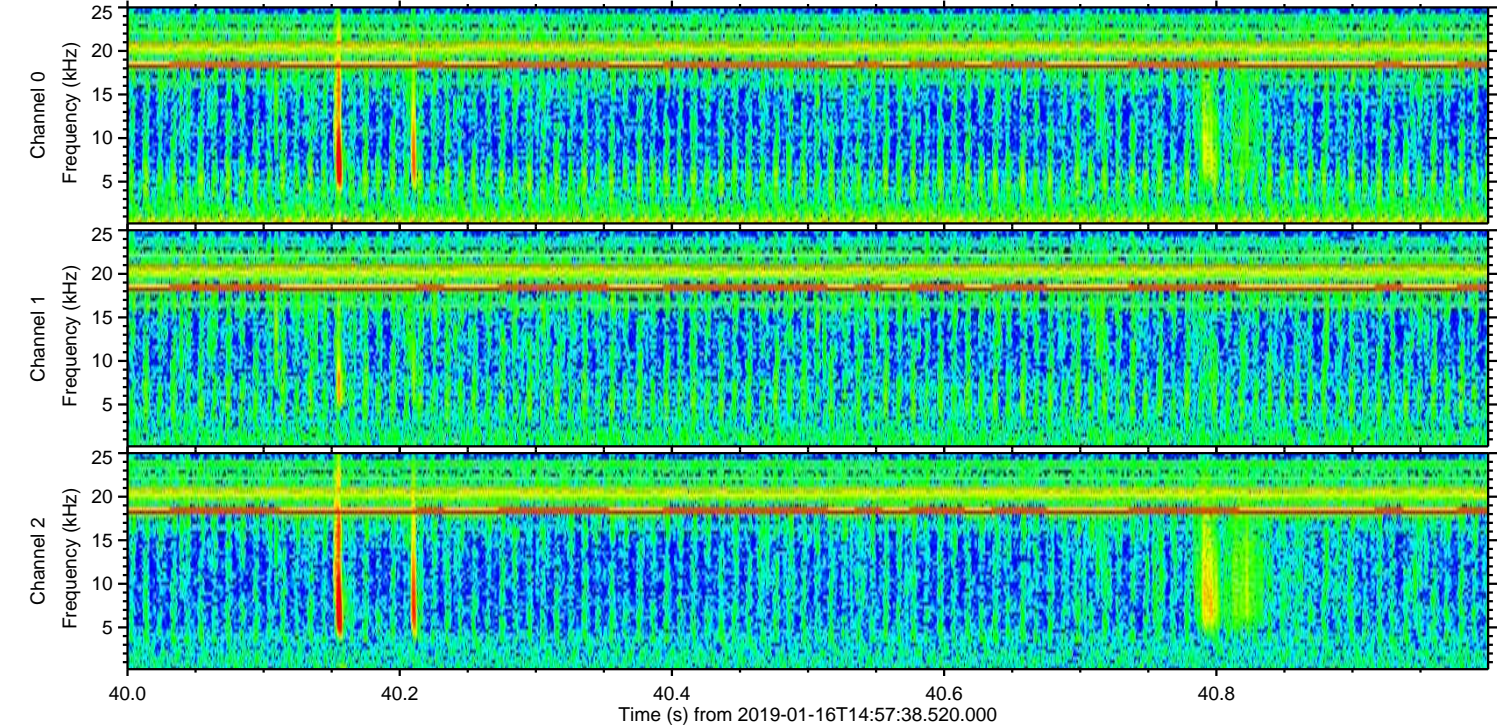
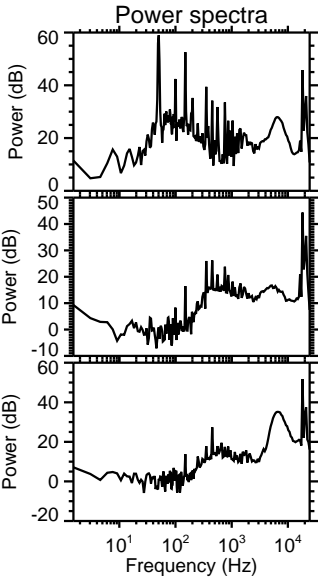
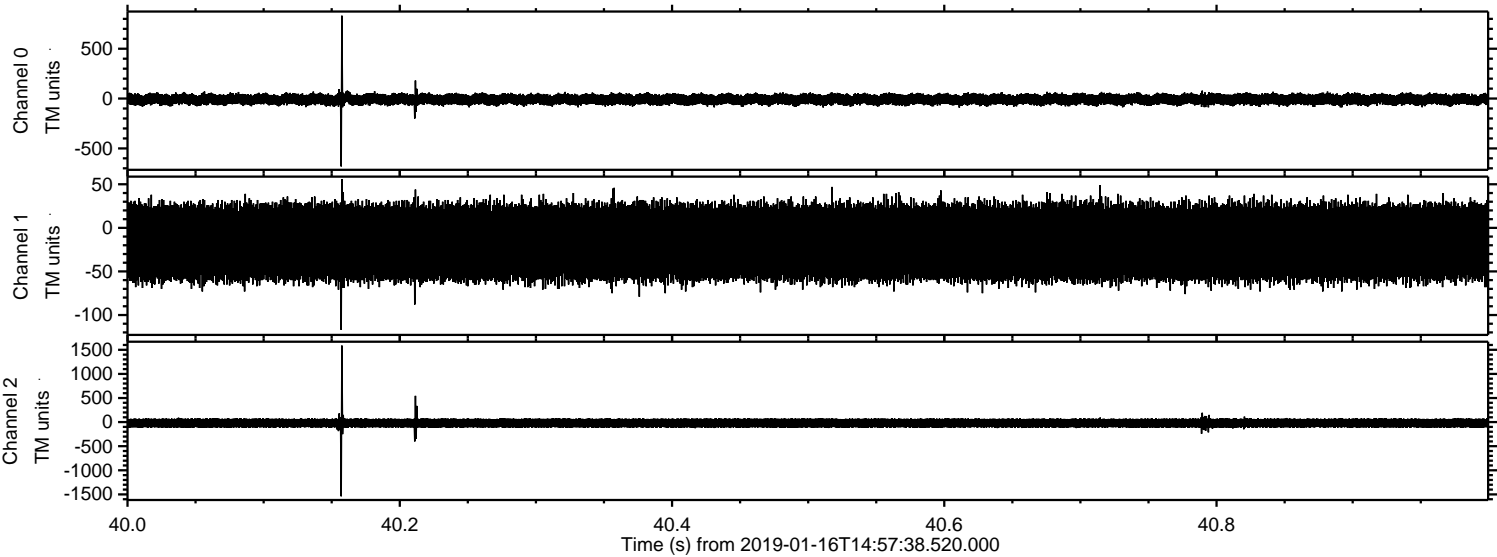


ELMAVAN 3D WAVEFORMS (Measured data sampled at 50 kHz) 51000 packets of 144 samples from 2019-01-16T14:57:38.520.000. Part 101/147

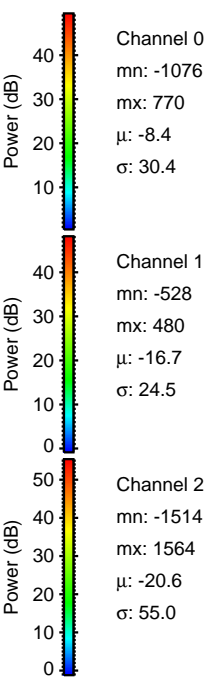
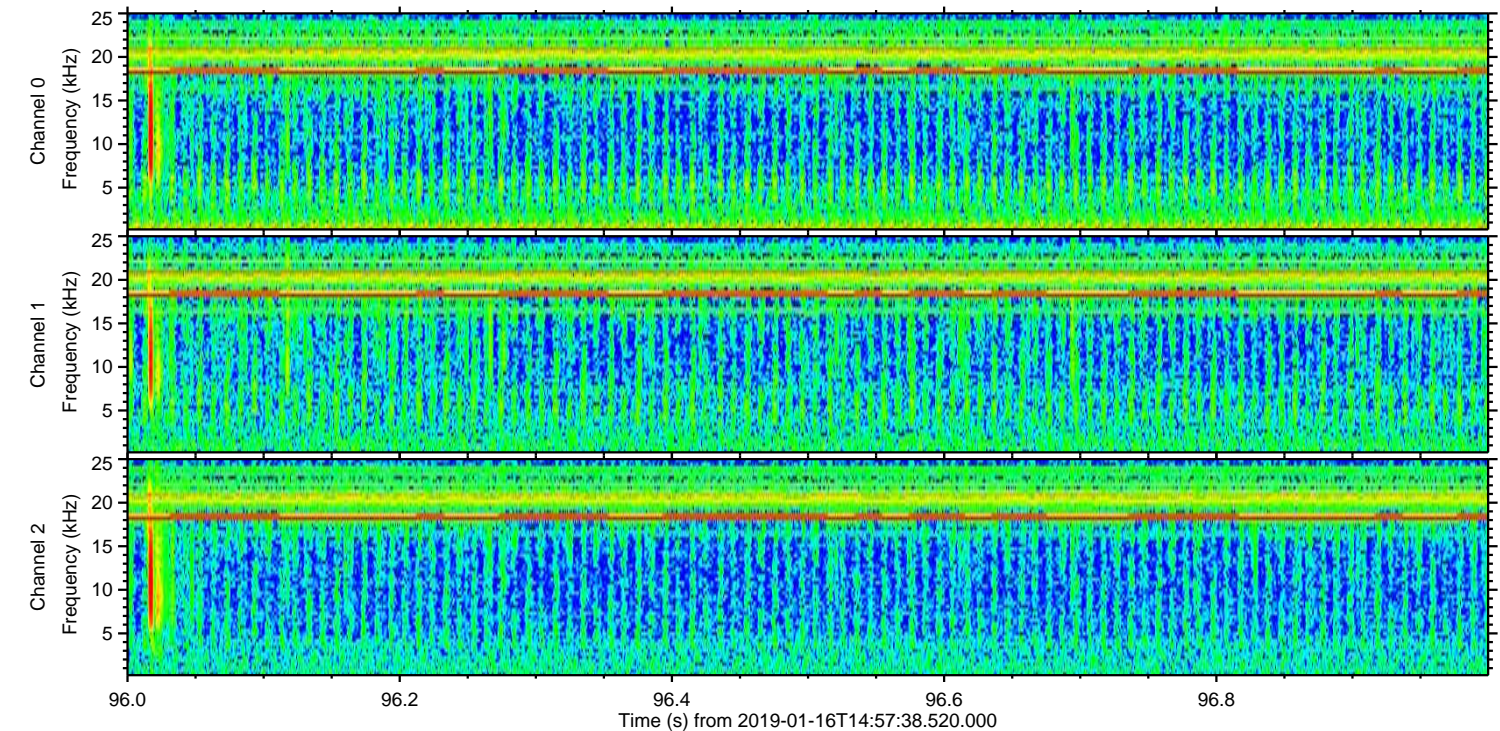
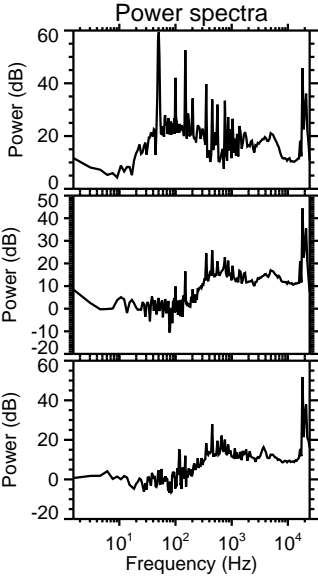
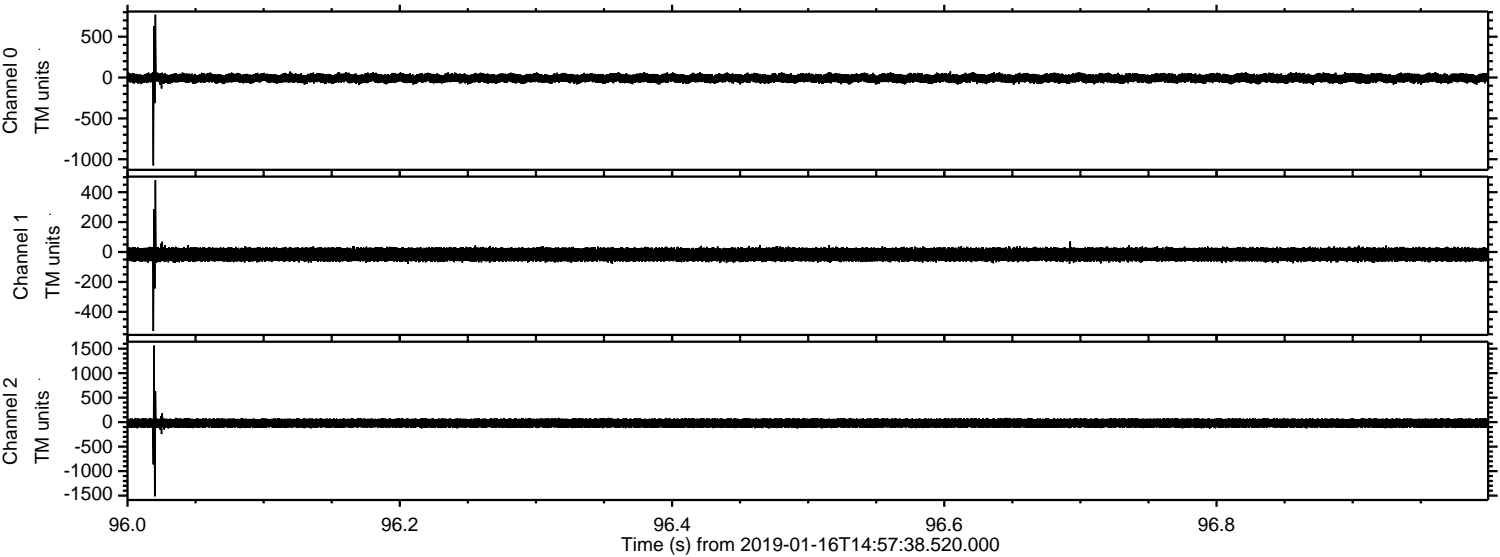
Processed Wed Jan 16 16:05:12 2019 by ELM ver.2012-10-06 from 001\_\_elm20190116\_145737\_\_dat00.bin



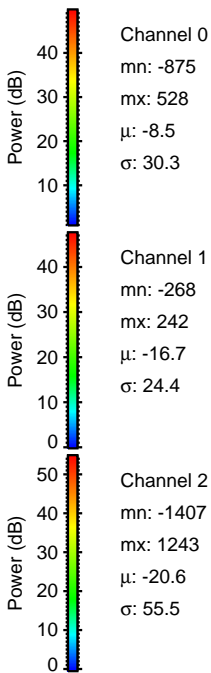
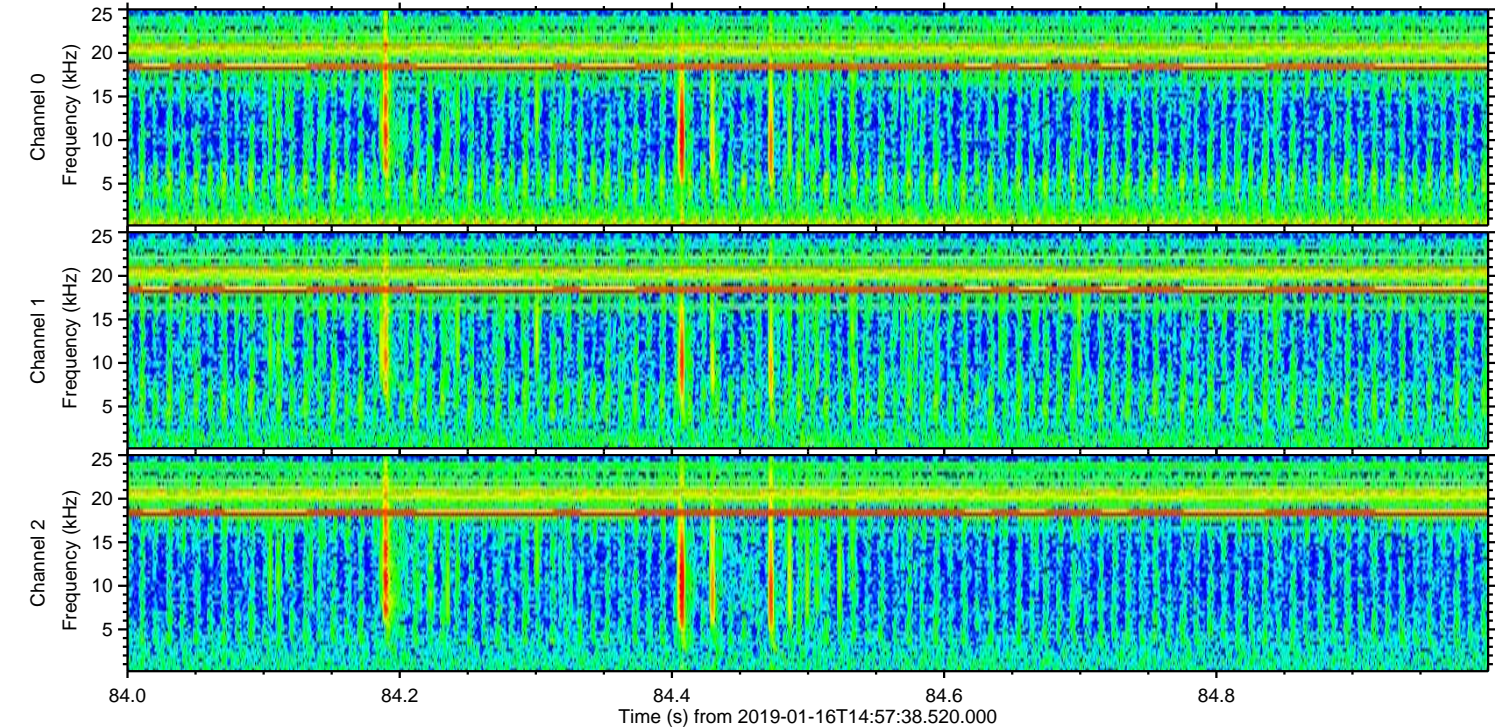
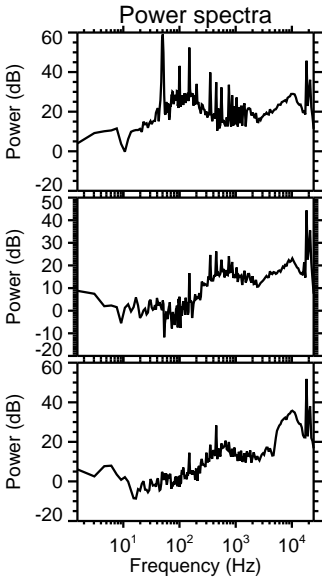
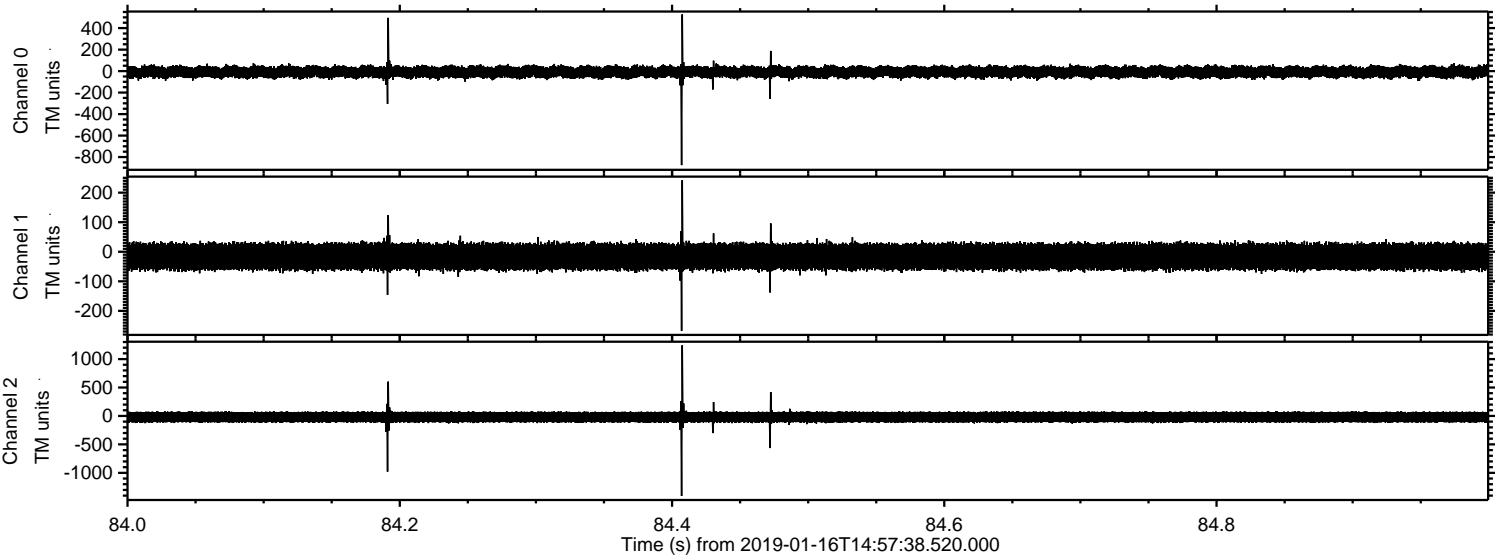
Processed Wed Jan 16 16:05:13 2019 by ELM ver.2012-10-06 from 001\_\_elm20190116\_145737\_\_dat00.bin



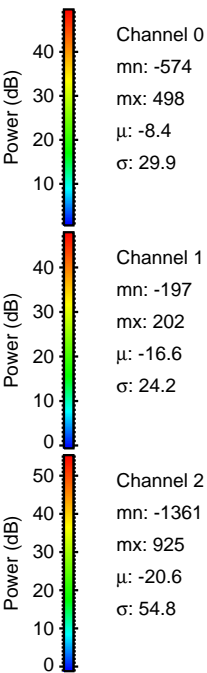
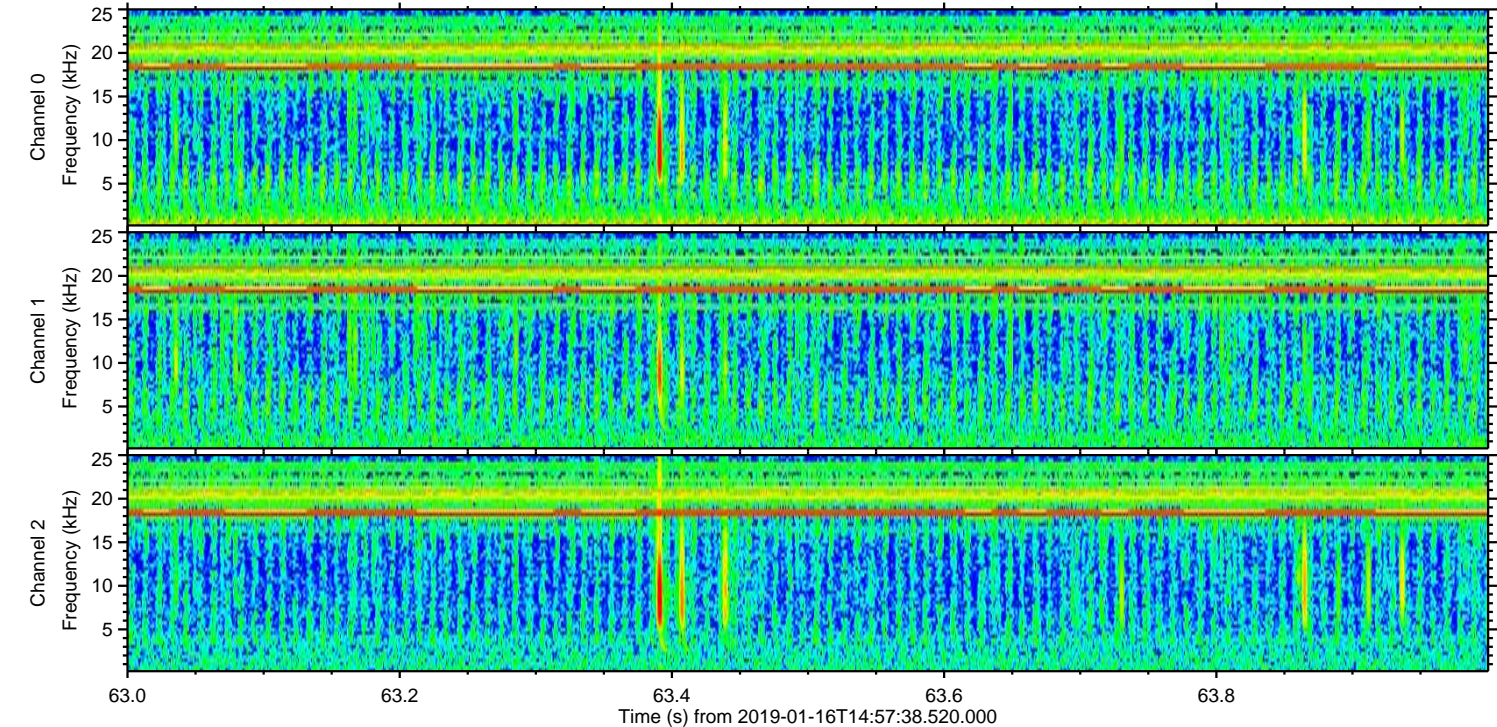
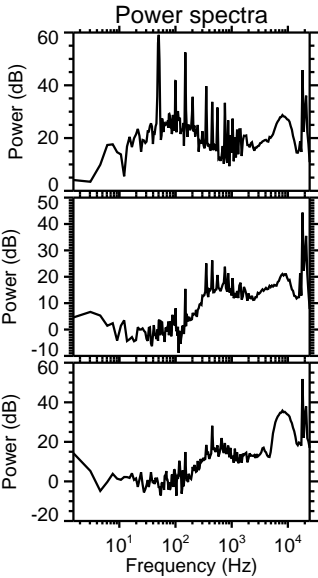
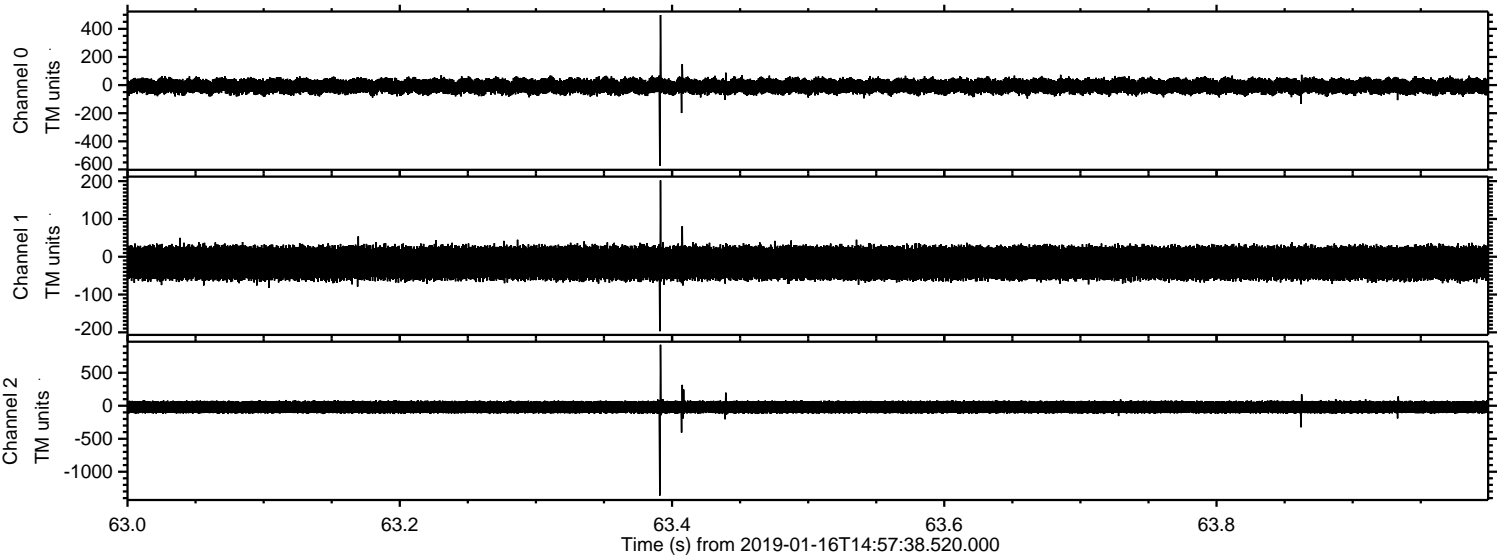
Processed Wed Jan 16 16:05:13 2019 by ELM ver.2012-10-06 from 001\_\_elm20190116\_145737\_\_dat00.bin



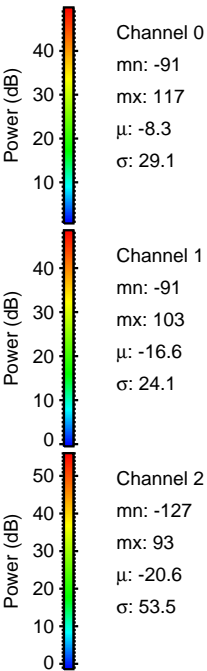
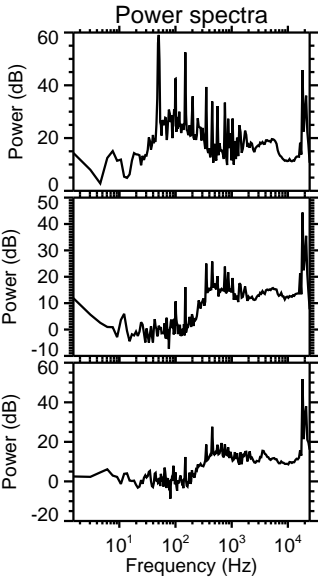
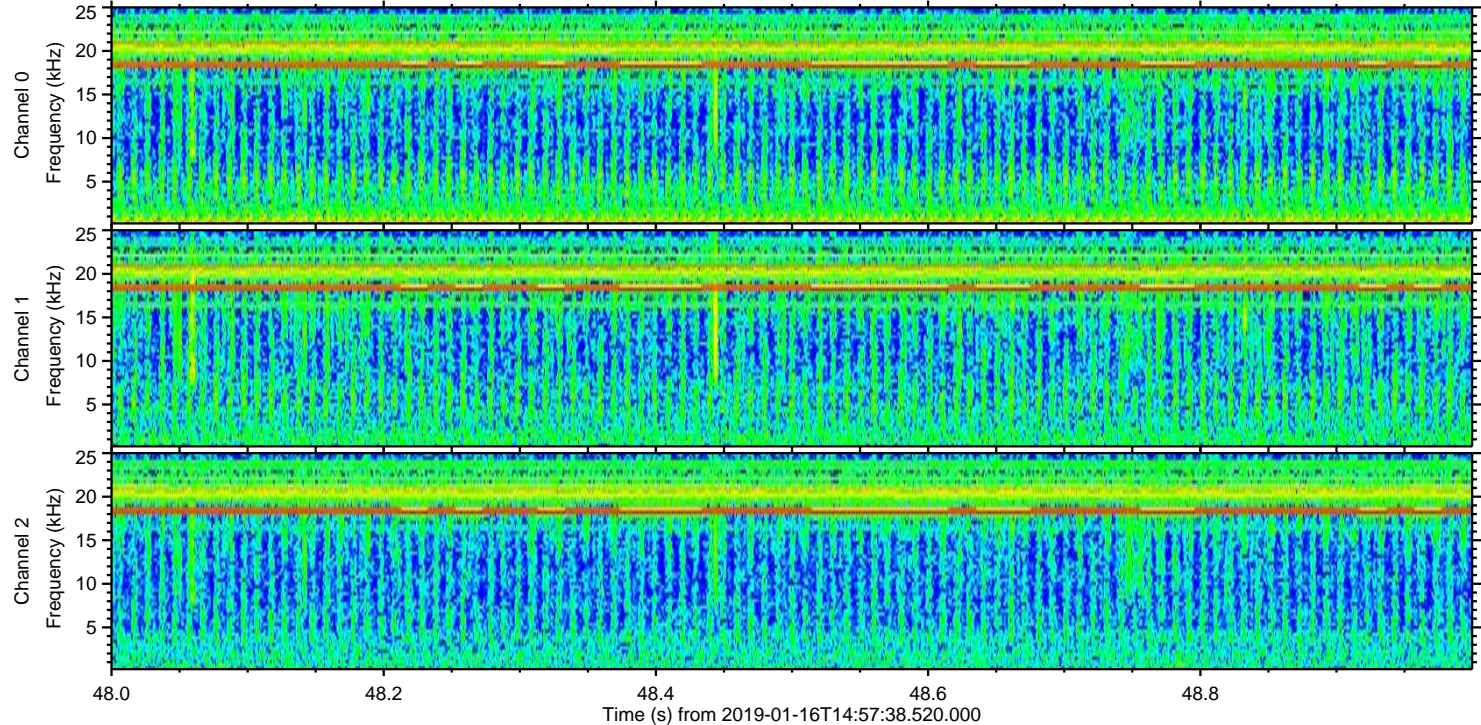
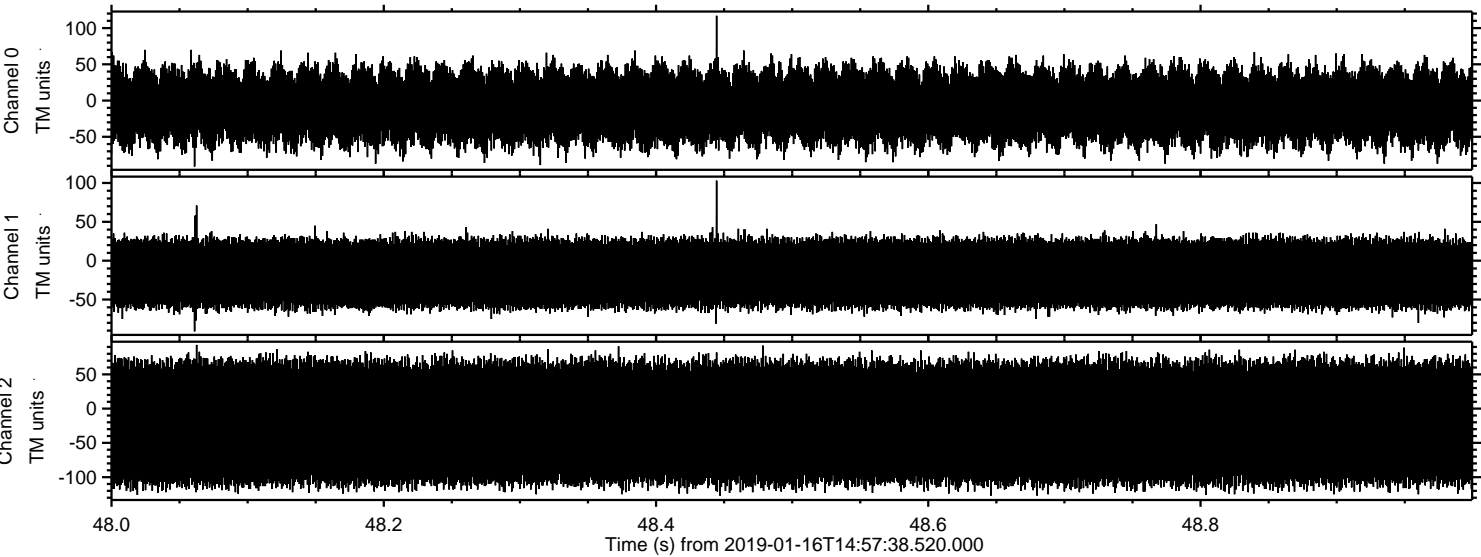
Processed Wed Jan 16 16:05:14 2019 by ELM ver.2012-10-06 from 001\_\_elm20190116\_145737\_\_dat00.bin



Processed Wed Jan 16 16:05:15 2019 by ELM ver.2012-10-06 from 001\_\_elm20190116\_145737\_\_dat00.bin



Processed Wed Jan 16 16:05:16 2019 by ELM ver.2012-10-06 from 001\_\_elm20190116\_145737\_\_dat00.bin



Channel 0

mn: -91  
mx: 117  
 $\mu$ : -8.3  
 $\sigma$ : 29.1

Channel 1

mn: -91  
mx: 103  
 $\mu$ : -16.6  
 $\sigma$ : 24.1

Channel 2

mn: -127  
mx: 93  
 $\mu$ : -20.6  
 $\sigma$ : 53.5