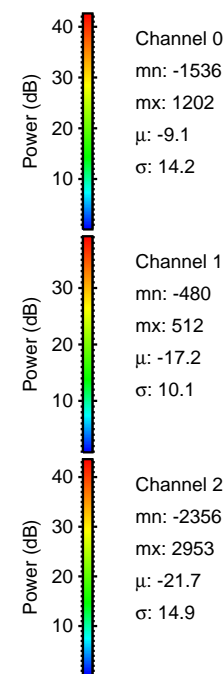
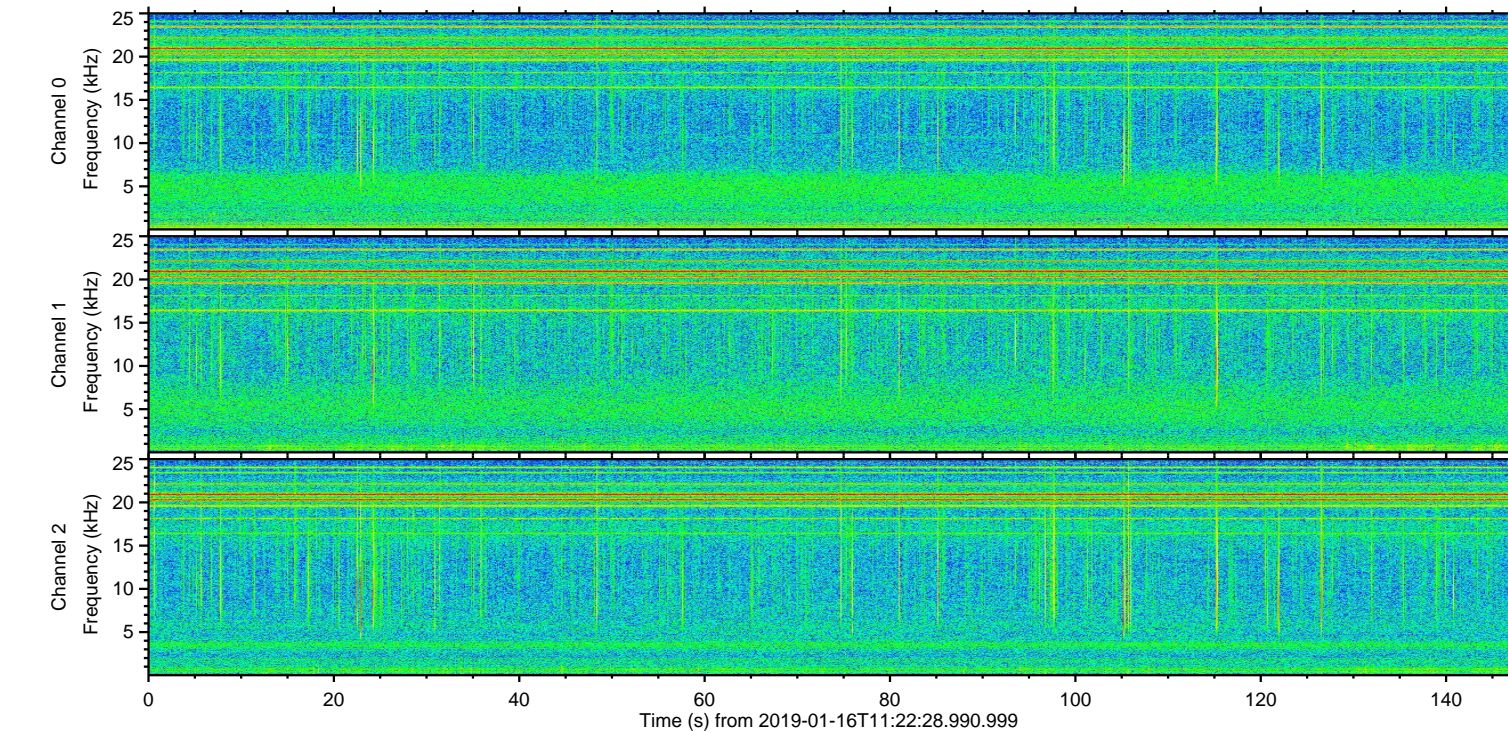
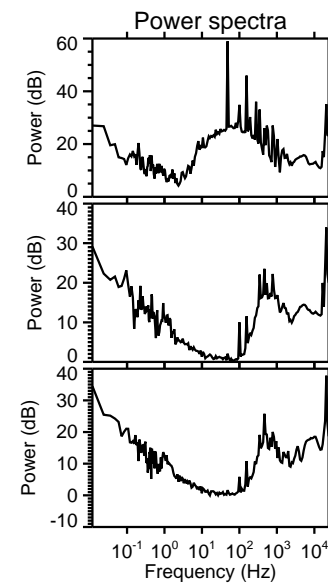
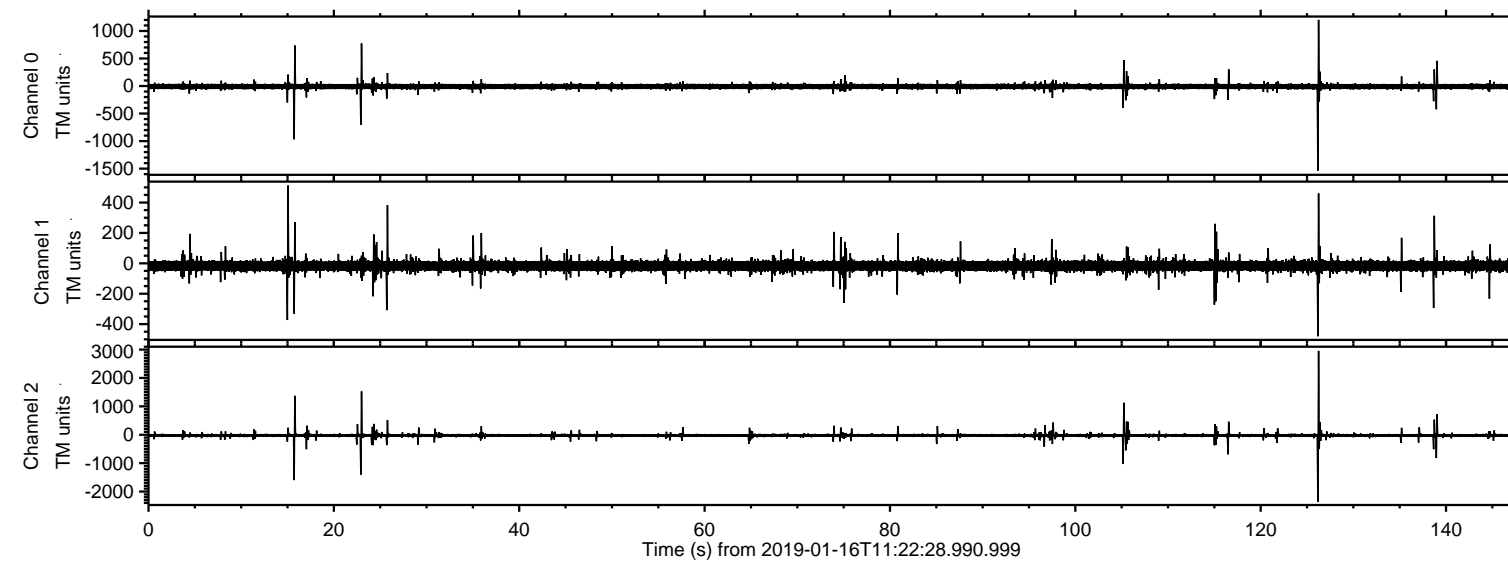


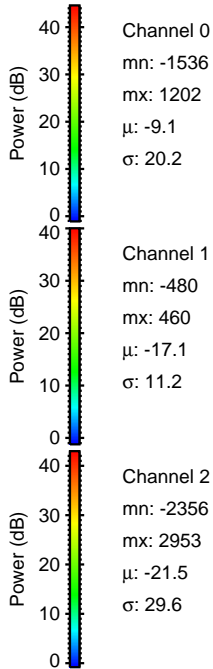
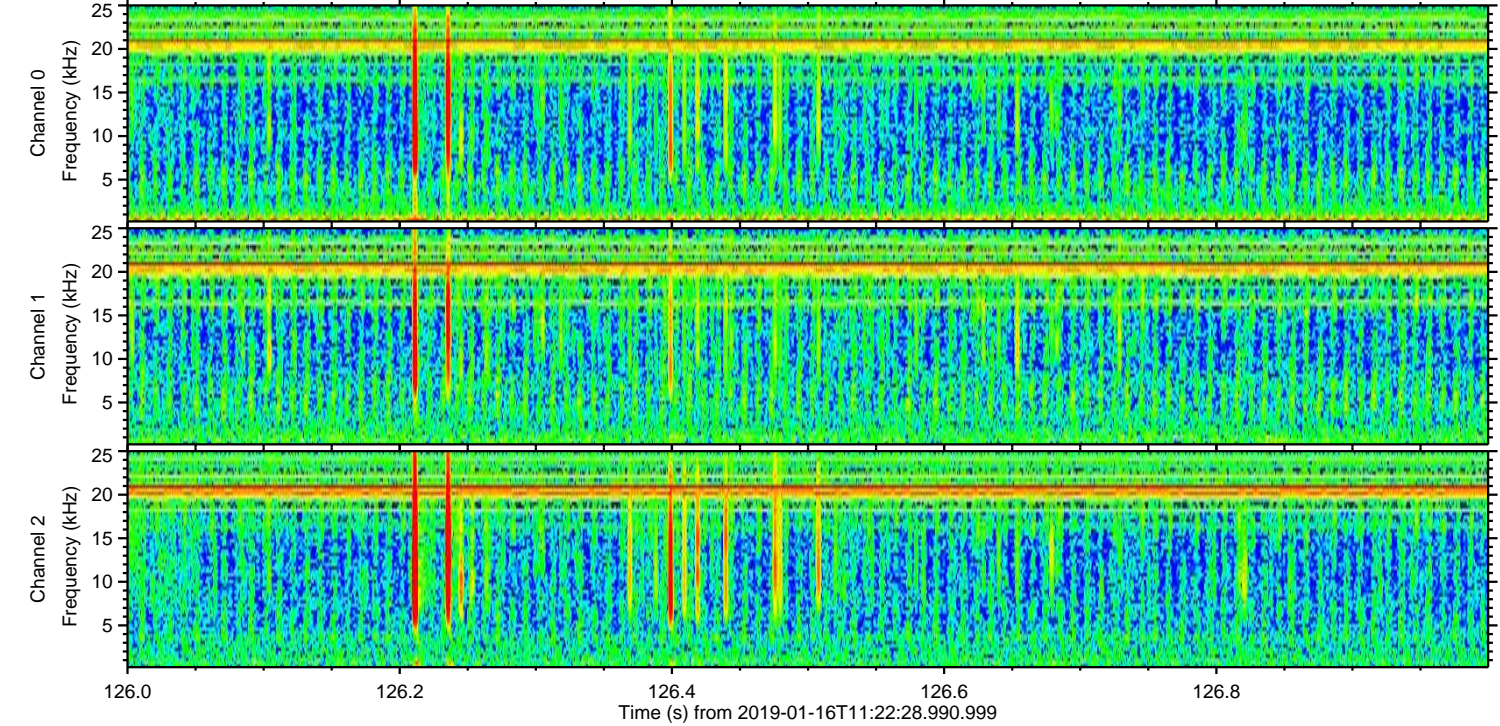
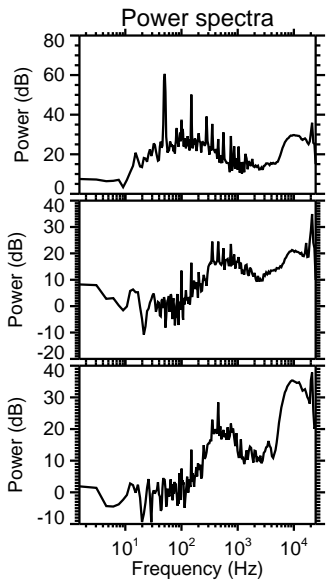
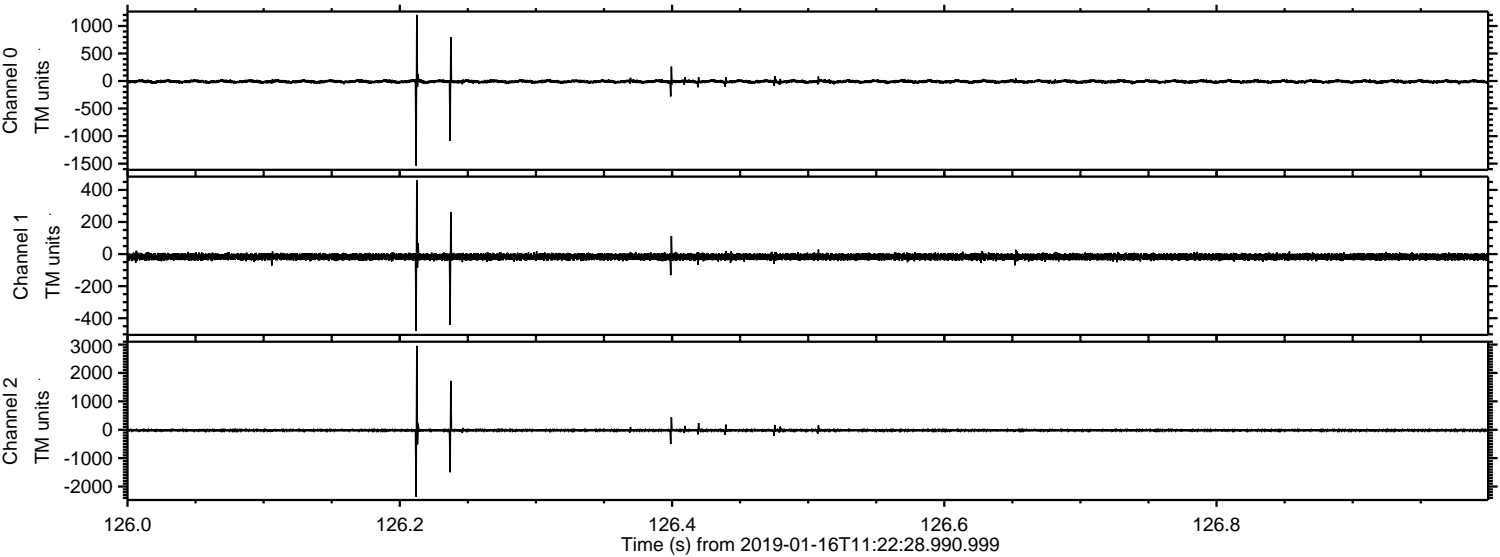
ELMAVAN 3D WAVEFORMS (Measured data sampled at 50 kHz) 51000 packets of 144 samples from 2019-01-16T11:22:28.990.999.

Processed Wed Jan 16 12:30:46 2019 by ELM ver.2012-10-06 from 001__elm20190116_112227__dat00.bin



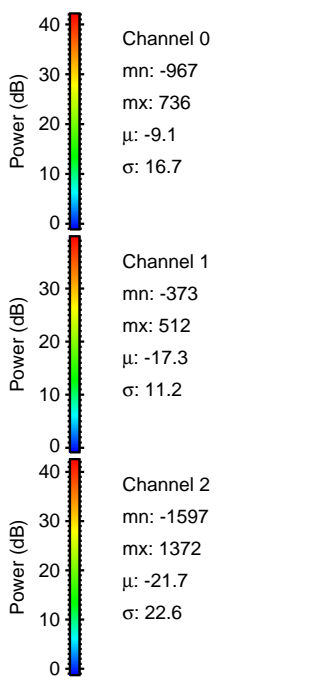
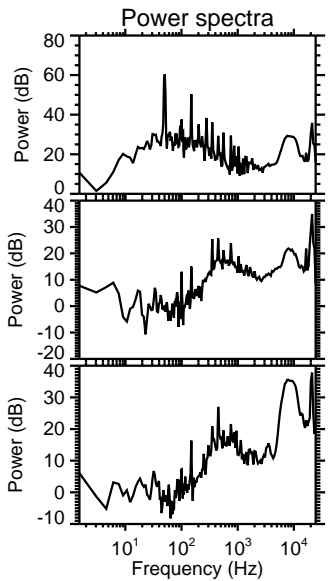
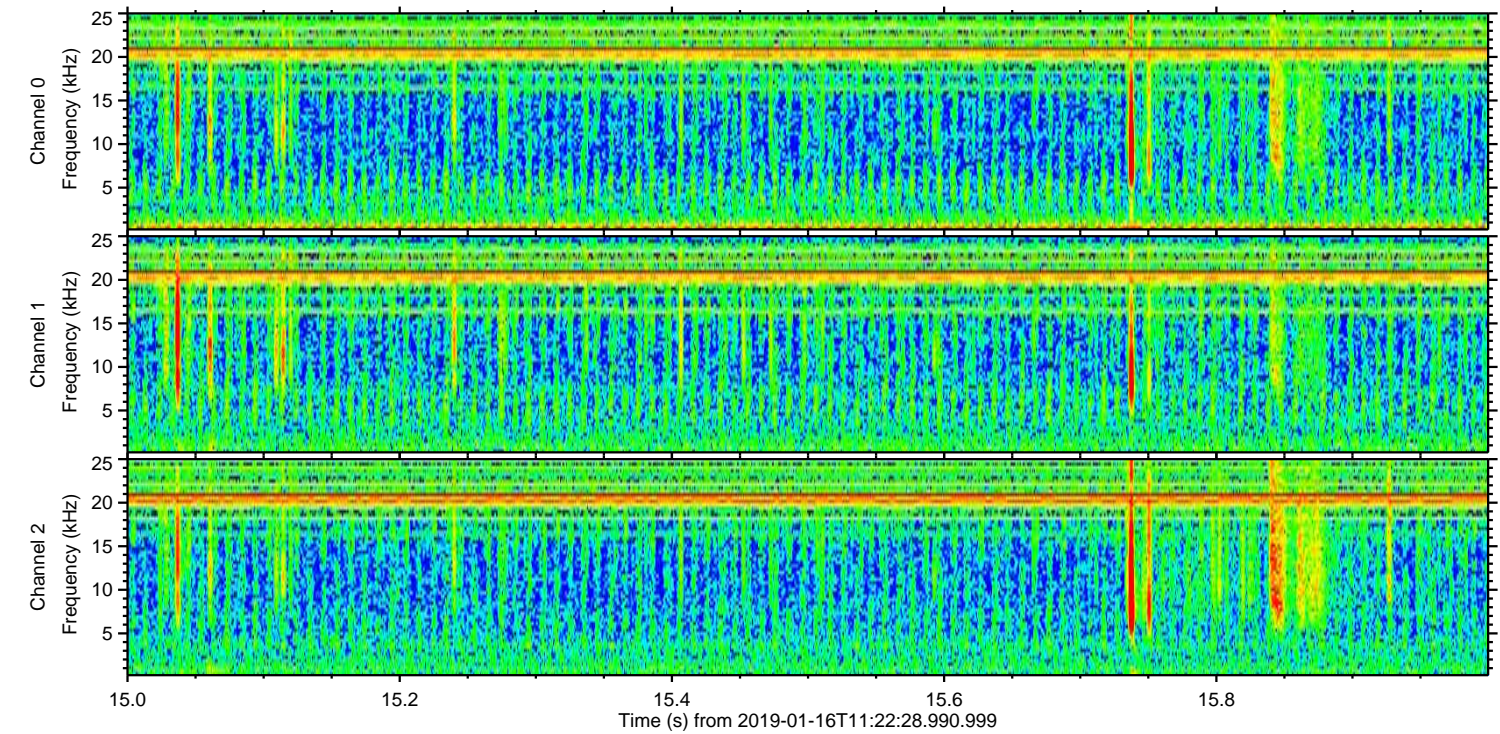
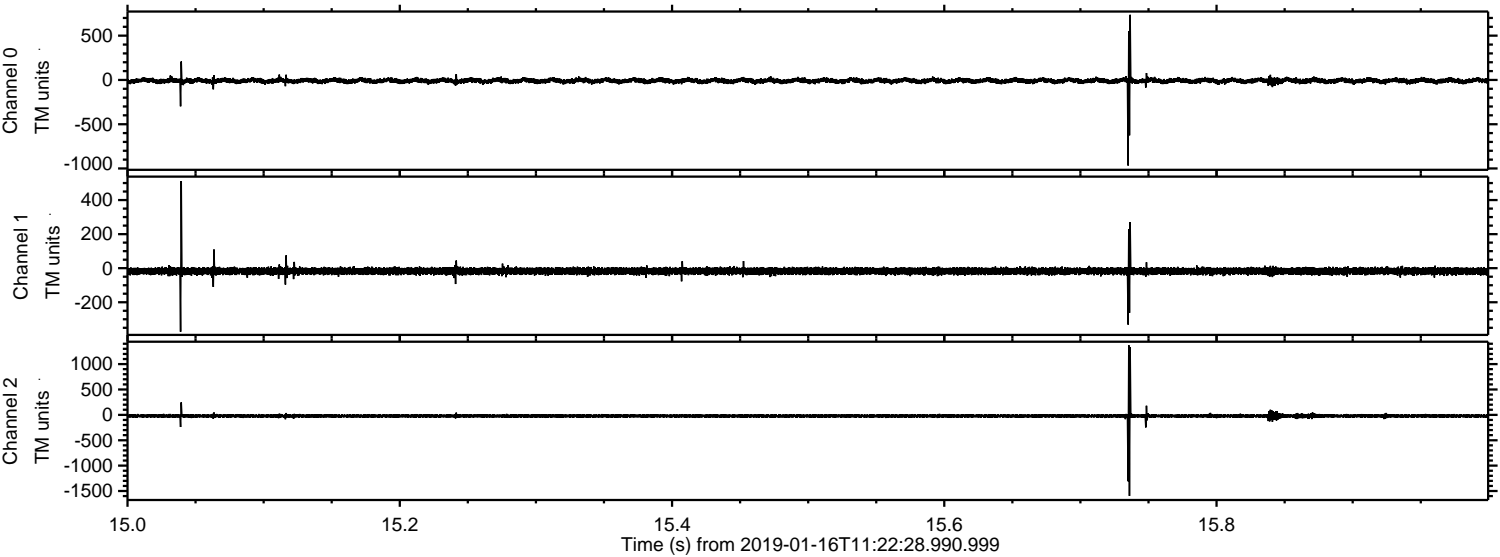
ELMAVAN 3D WAVEFORMS (Measured data sampled at 50 kHz) 51000 packets of 144 samples from 2019-01-16T11:22:28.990.999. Part 127/147

Processed Wed Jan 16 12:30:52 2019 by ELM ver.2012-10-06 from 001__elm20190116_112227__dat00.bin



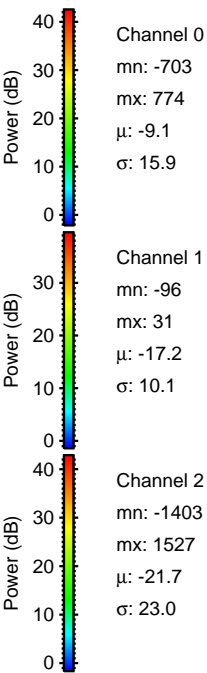
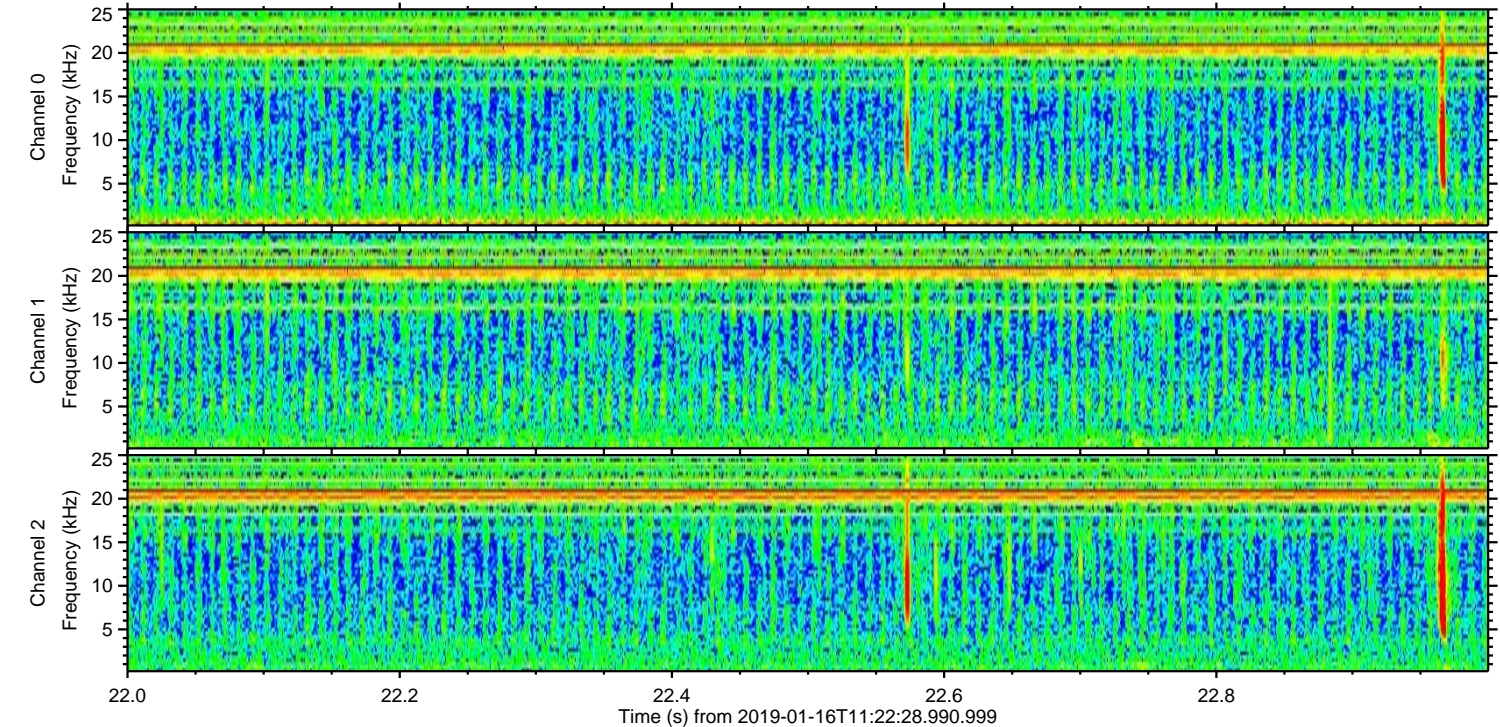
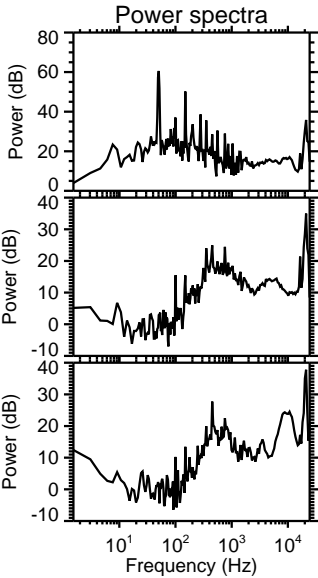
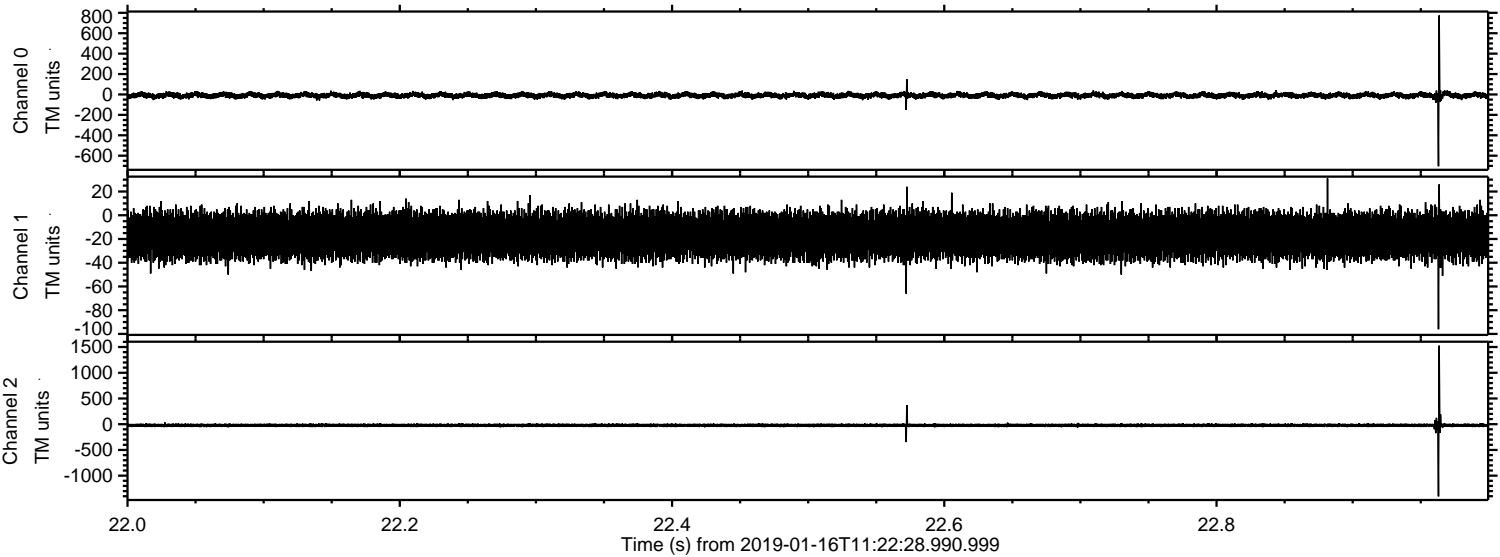
ELMAVAN 3D WAVEFORMS (Measured data sampled at 50 kHz) 51000 packets of 144 samples from 2019-01-16T11:22:28.990.999. Part 16/147

Processed Wed Jan 16 12:30:53 2019 by ELM ver.2012-10-06 from 001__elm20190116_112227__dat00.bin



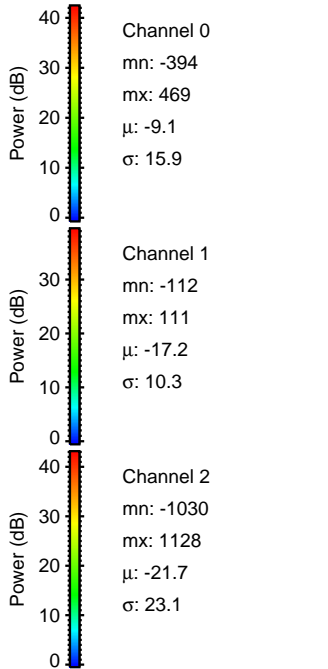
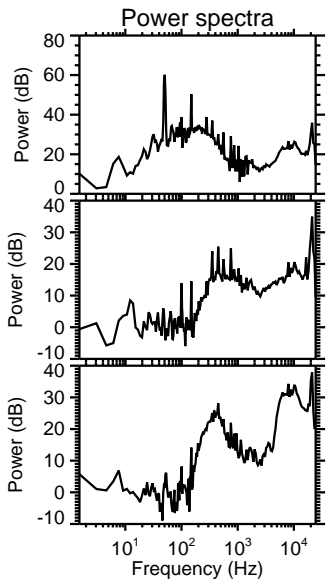
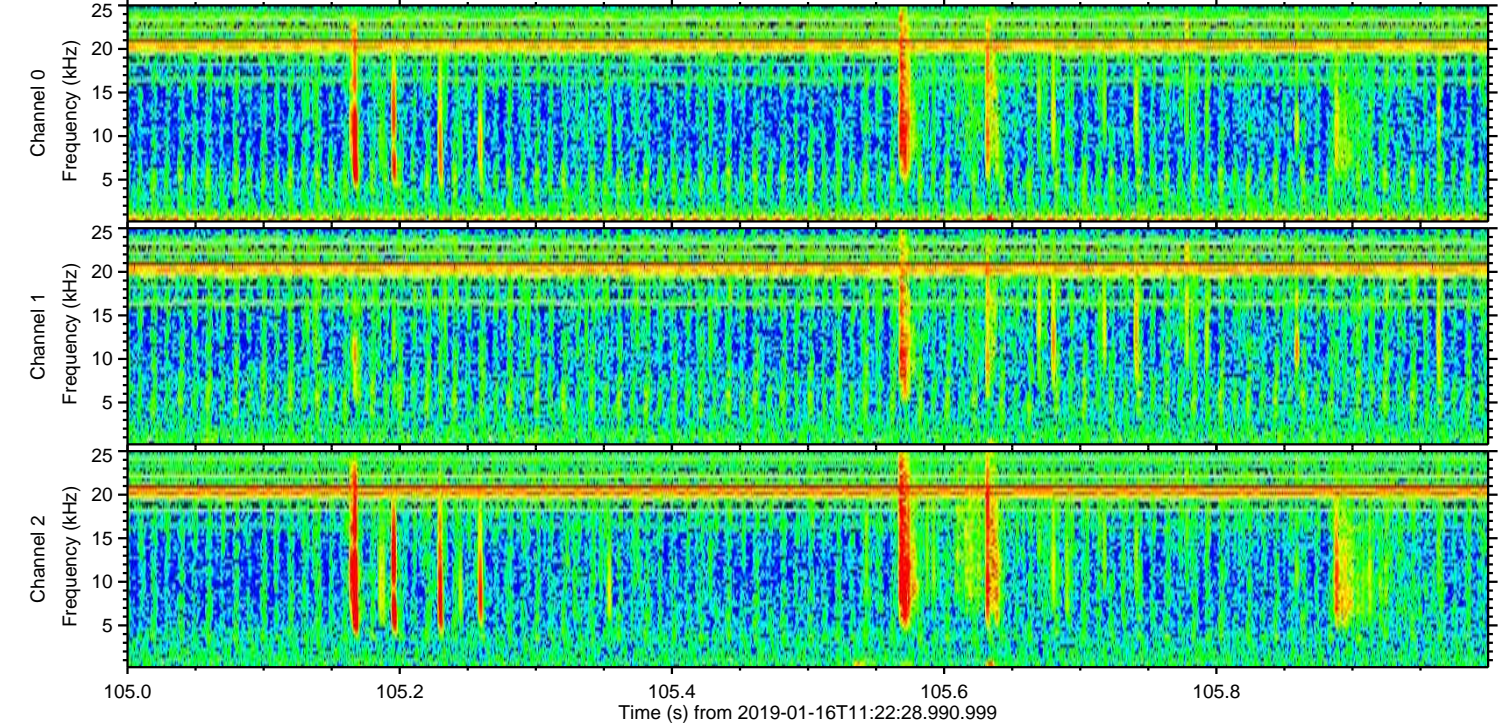
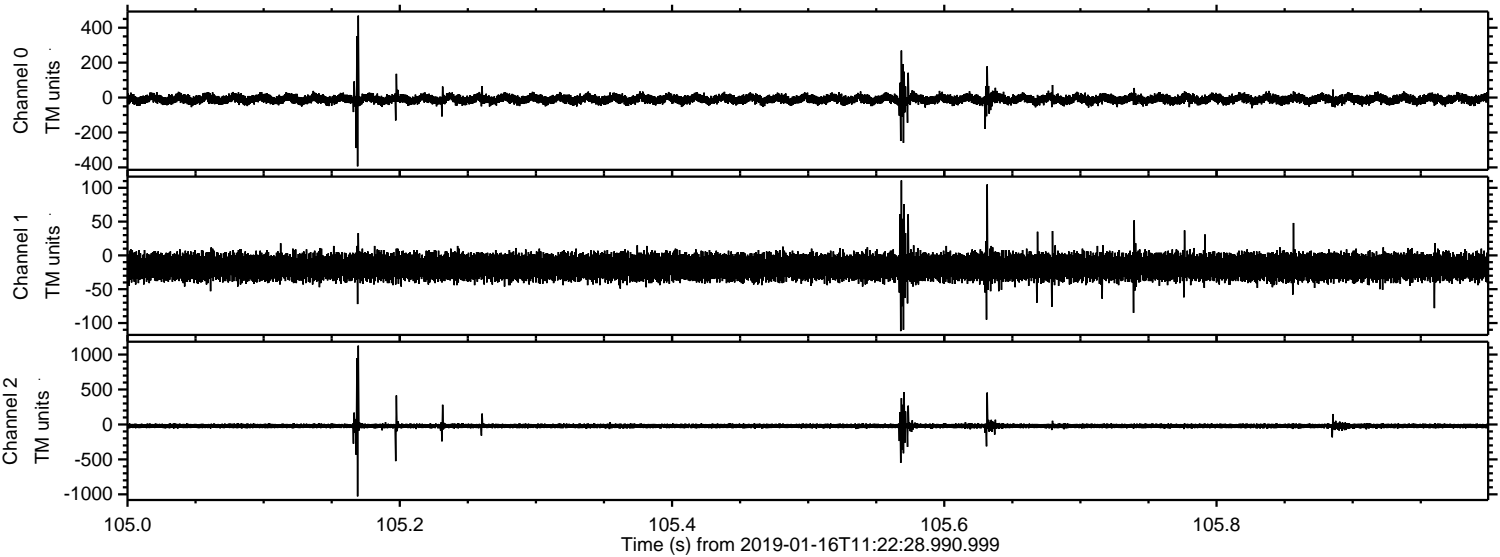
ELMAVAN 3D WAVEFORMS (Measured data sampled at 50 kHz) 51000 packets of 144 samples from 2019-01-16T11:22:28.990.999. Part 23/147

Processed Wed Jan 16 12:30:53 2019 by ELM ver.2012-10-06 from 001__elm20190116_112227__dat00.bin



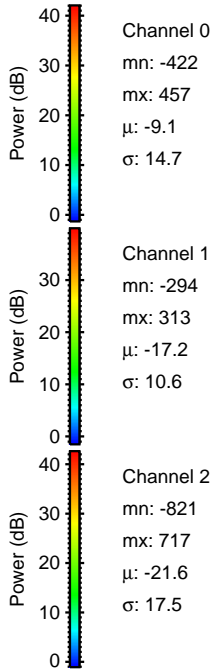
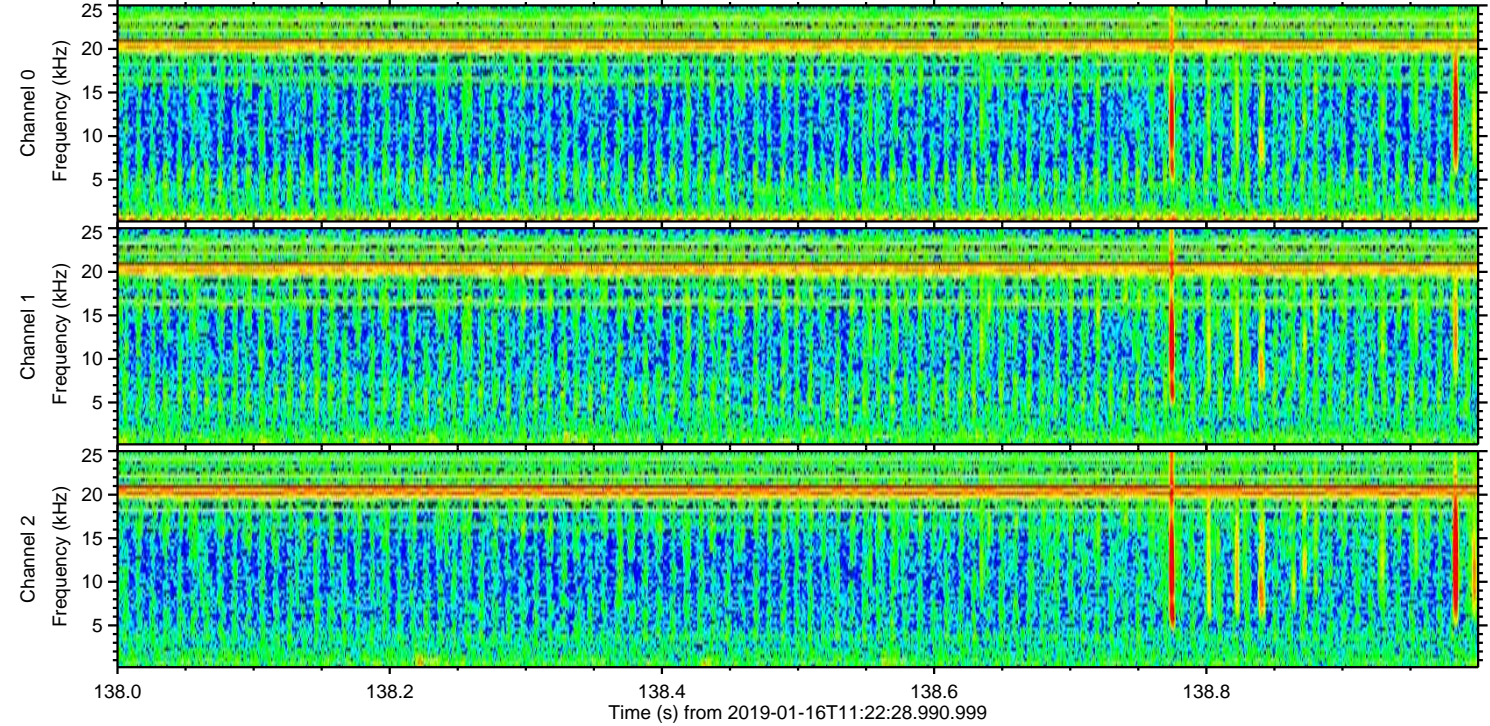
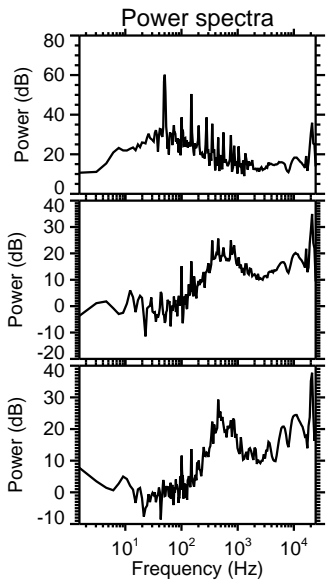
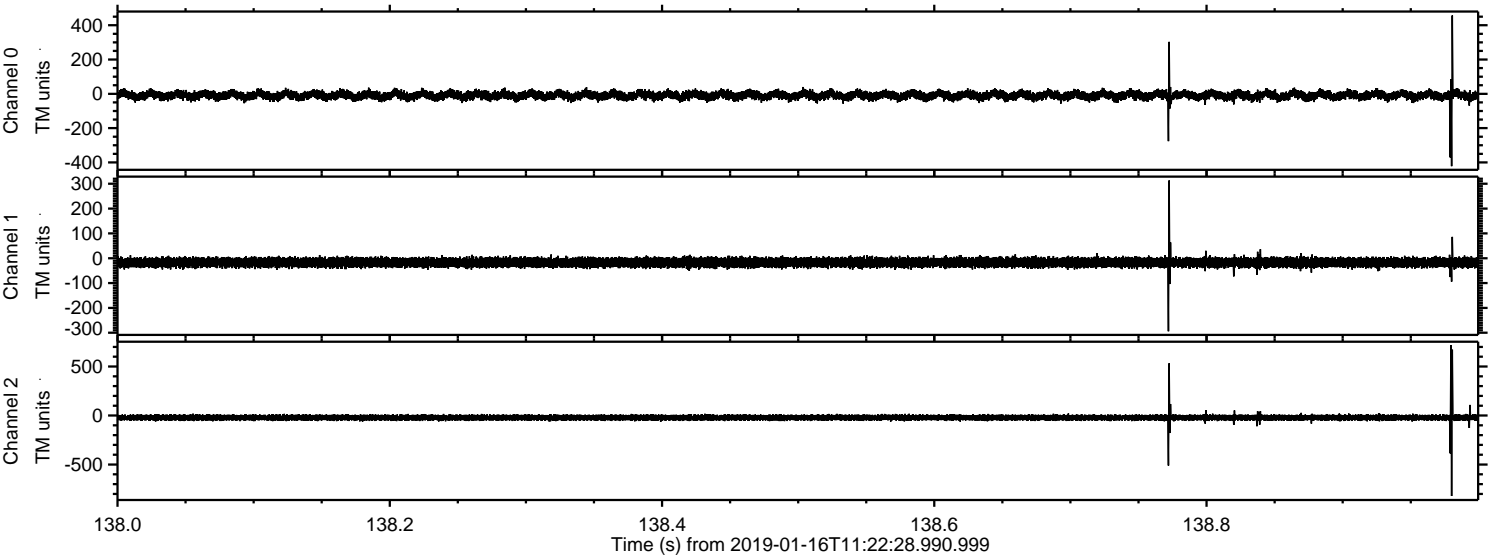
ELMAVAN 3D WAVEFORMS (Measured data sampled at 50 kHz) 51000 packets of 144 samples from 2019-01-16T11:22:28.990.999. Part 106/147

Processed Wed Jan 16 12:30:54 2019 by ELM ver.2012-10-06 from 001_elm20190116_112227__dat00.bin



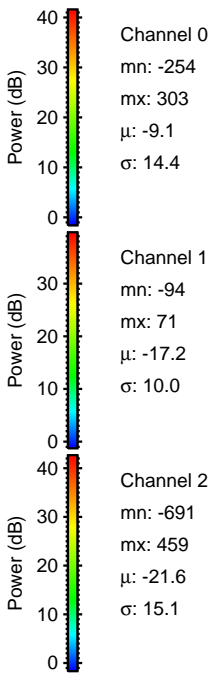
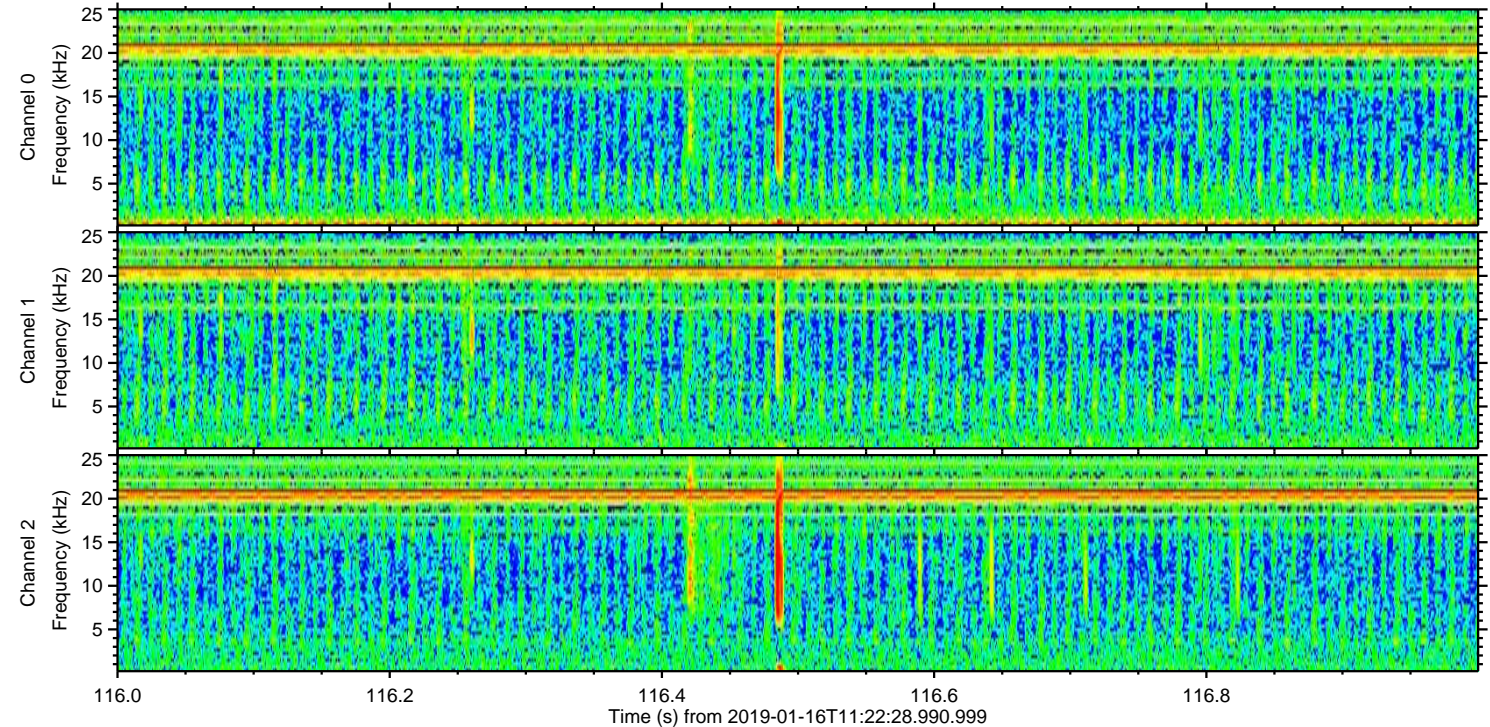
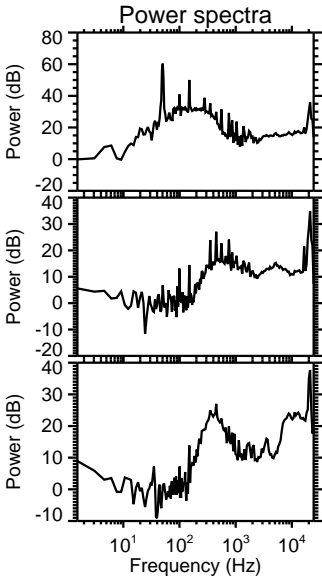
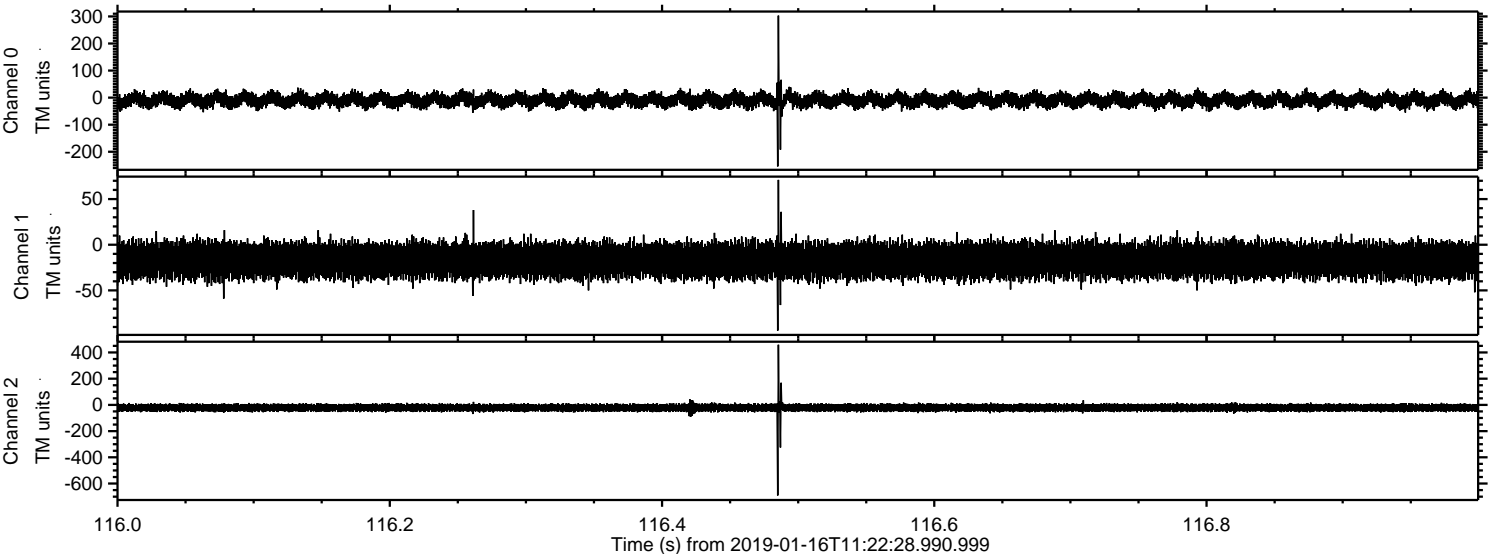
ELMAVAN 3D WAVEFORMS (Measured data sampled at 50 kHz) 51000 packets of 144 samples from 2019-01-16T11:22:28.990.999. Part 139/147

Processed Wed Jan 16 12:30:55 2019 by ELM ver.2012-10-06 from 001__elm20190116_112227__dat00.bin

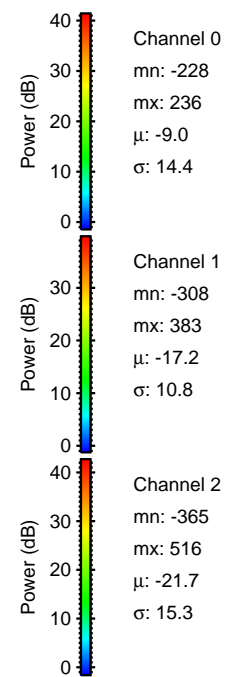
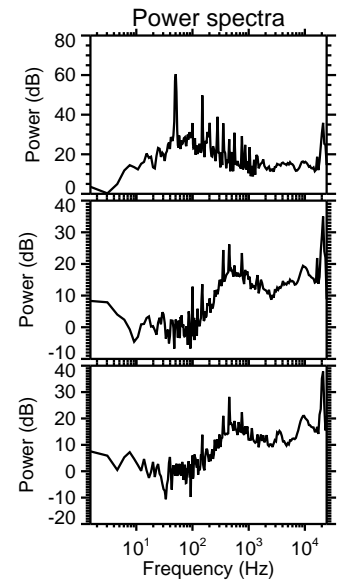
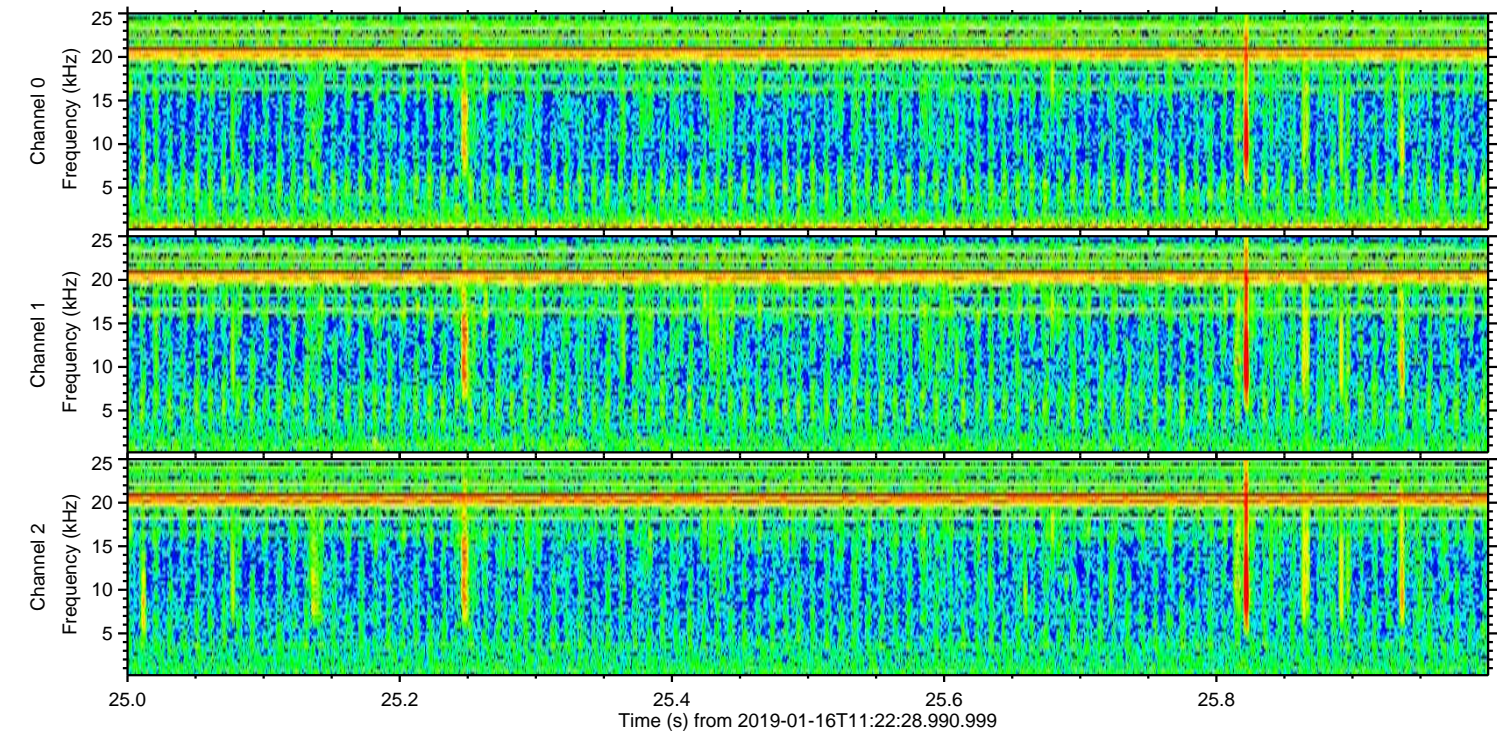
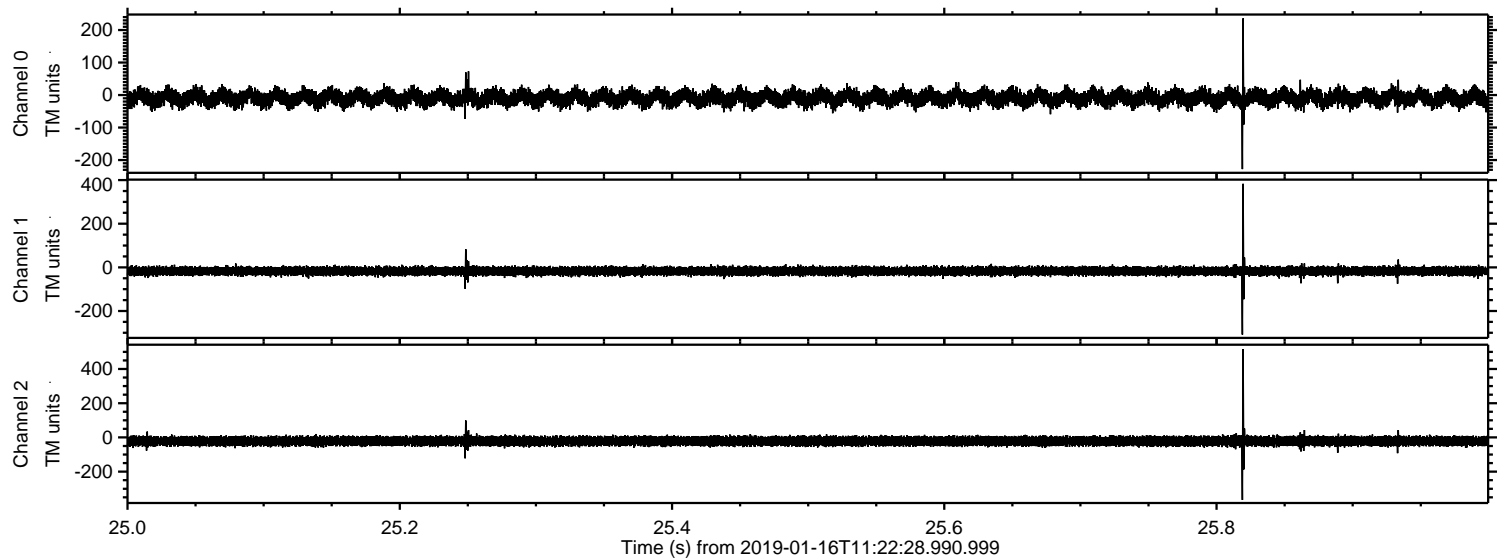


ELMAVAN 3D WAVEFORMS (Measured data sampled at 50 kHz) 51000 packets of 144 samples from 2019-01-16T11:22:28.990.999. Part 117/147

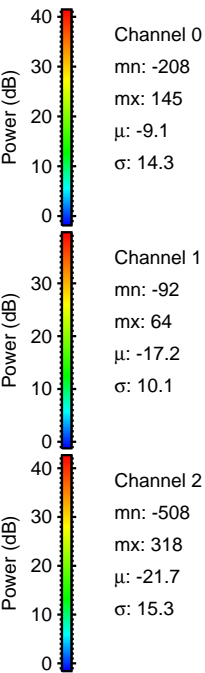
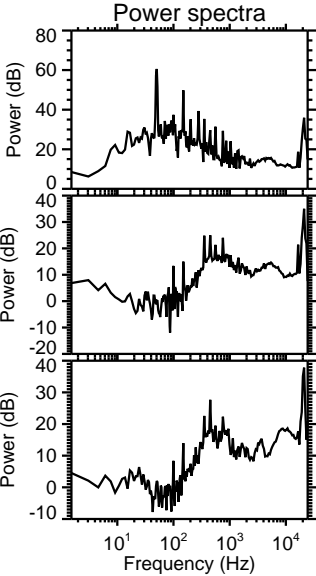
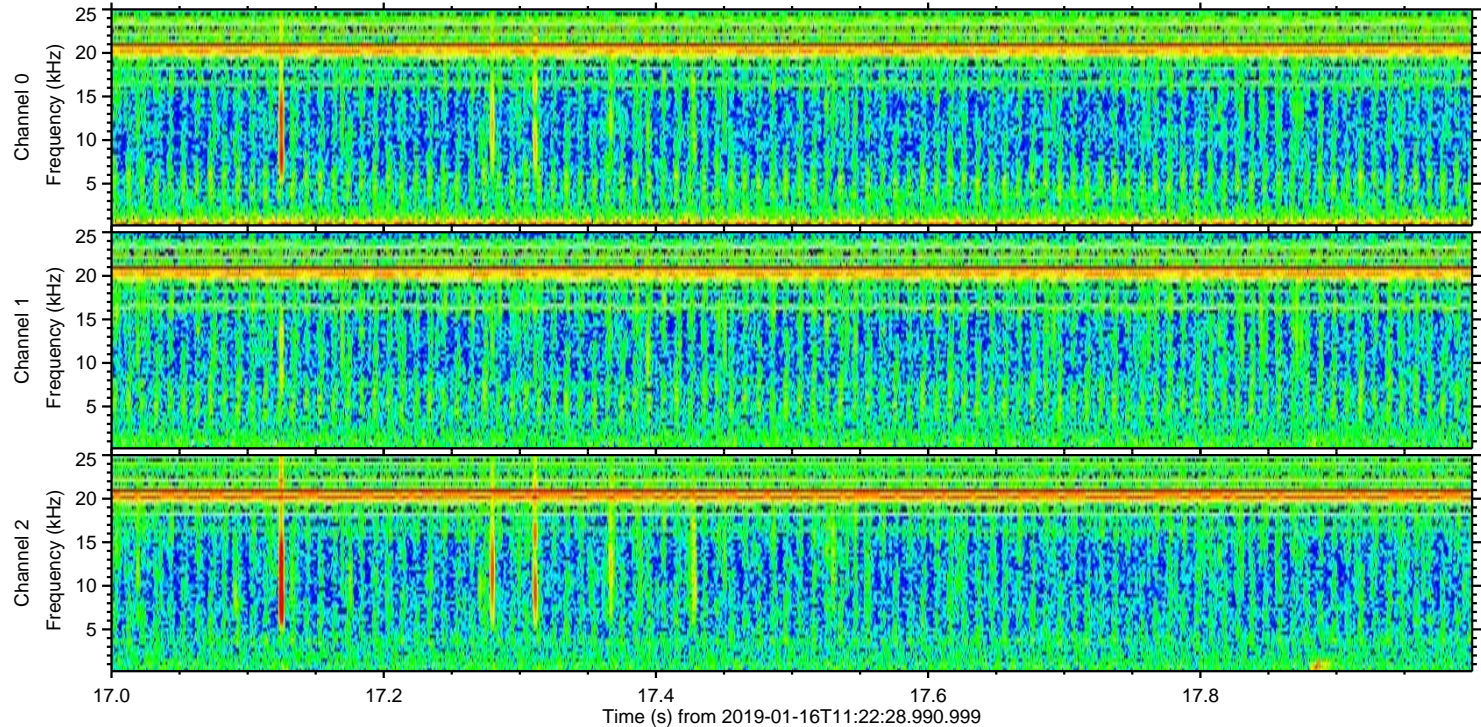
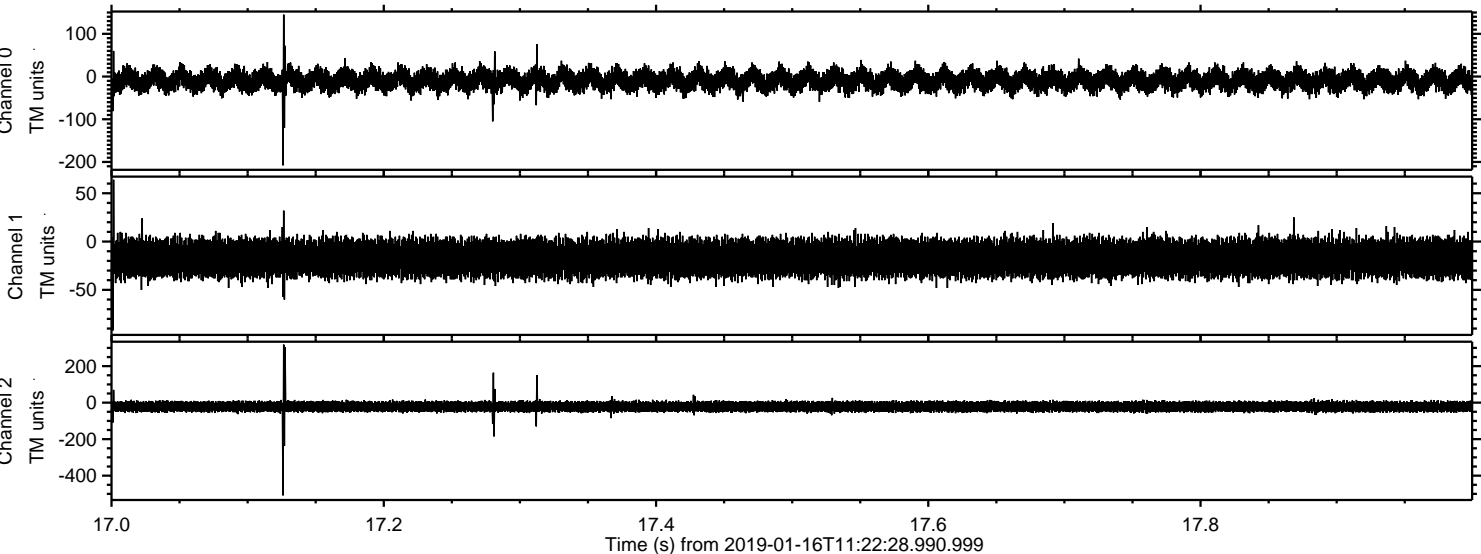
Processed Wed Jan 16 12:30:55 2019 by ELM ver.2012-10-06 from 001__elm20190116_112227__dat00.bin



Processed Wed Jan 16 12:30:56 2019 by ELM ver.2012-10-06 from 001_elm20190116_112227__dat00.bin



Processed Wed Jan 16 12:30:57 2019 by ELM ver.2012-10-06 from 001__elm20190116_112227__dat00.bin

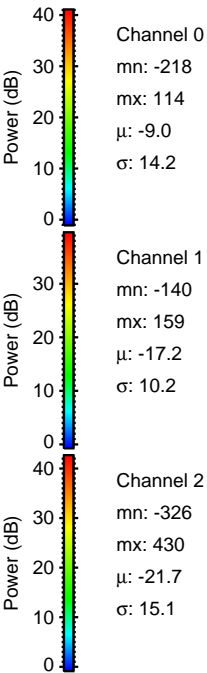
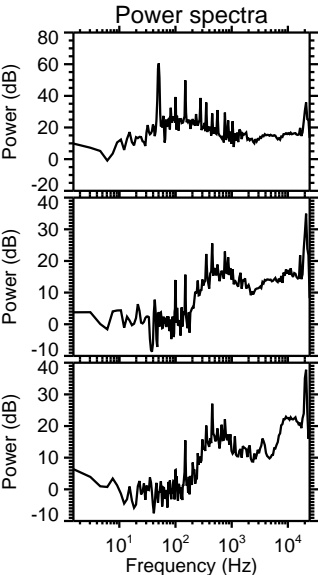
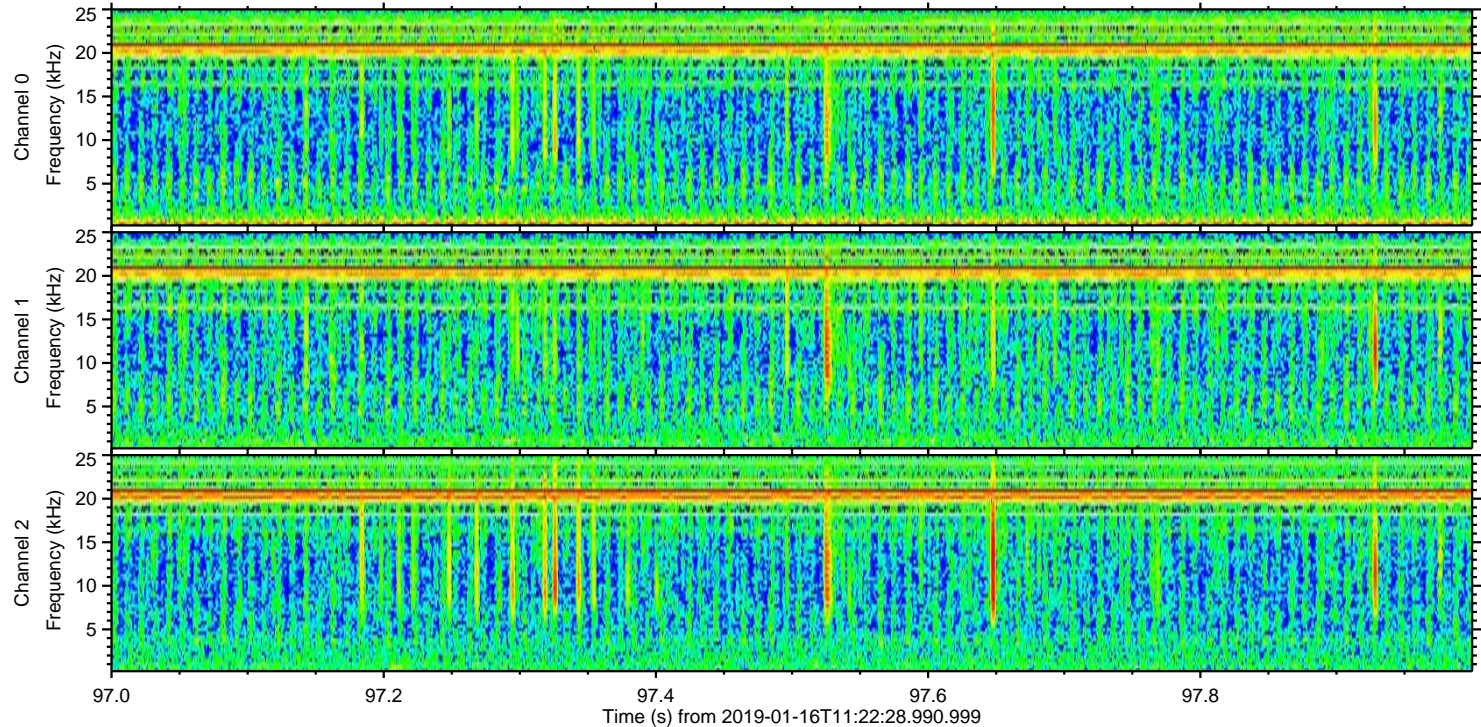
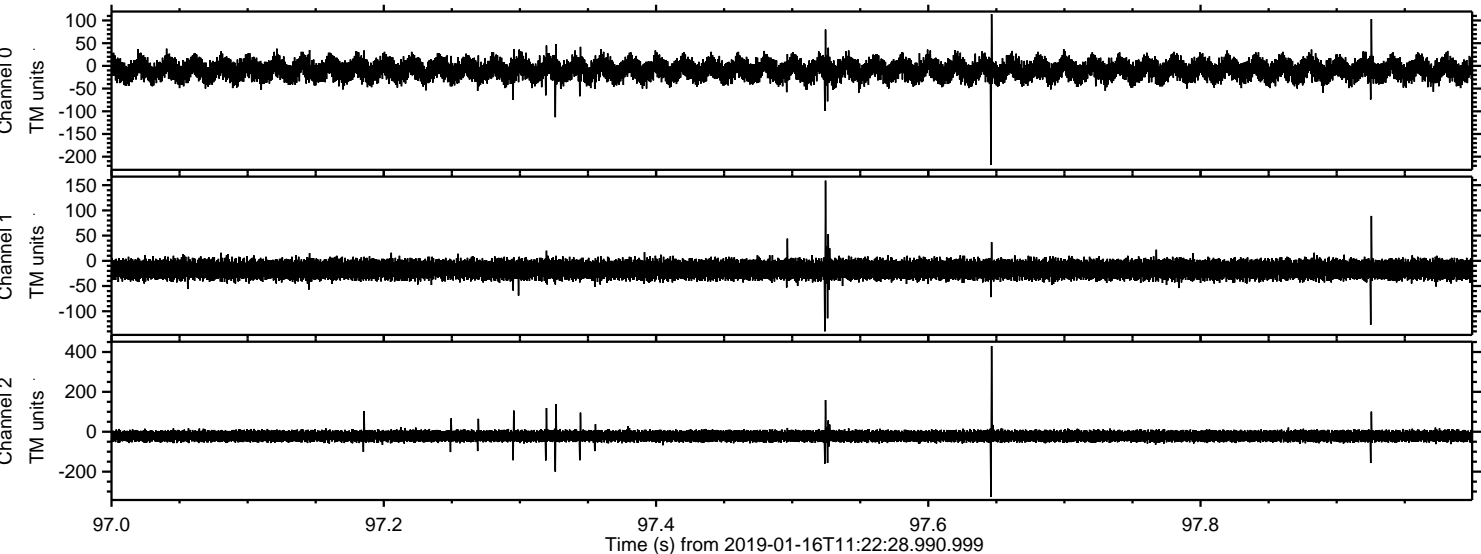


Channel 0
mn: -208
mx: 145
 μ : -9.1
 σ : 14.3

Channel 1
mn: -92
mx: 64
 μ : -17.2
 σ : 10.1

Channel 2
mn: -508
mx: 318
 μ : -21.7
 σ : 15.3

Processed Wed Jan 16 12:30:57 2019 by ELM ver.2012-10-06 from 001__elm20190116_112227__dat00.bin



Processed Wed Jan 16 12:30:58 2019 by ELM ver.2012-10-06 from 001__elm20190116_112227__dat00.bin

