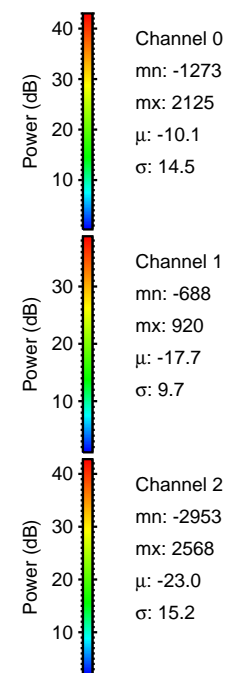
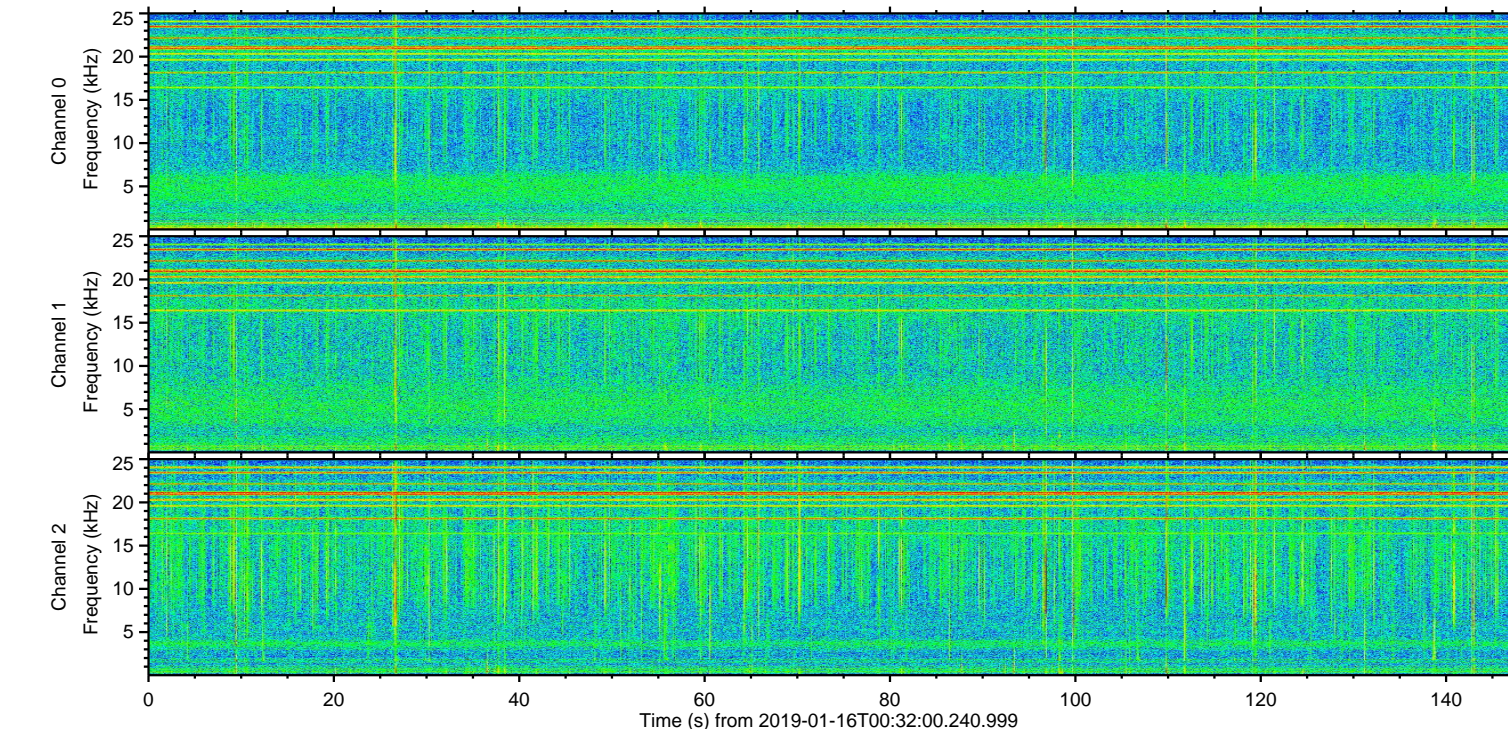
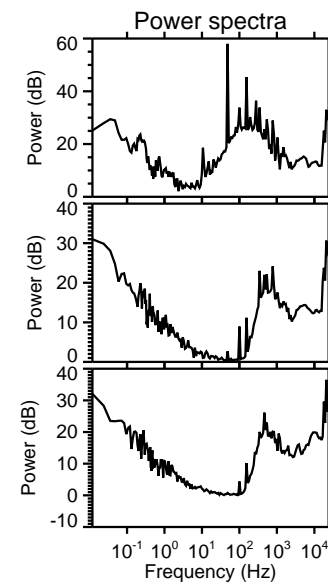
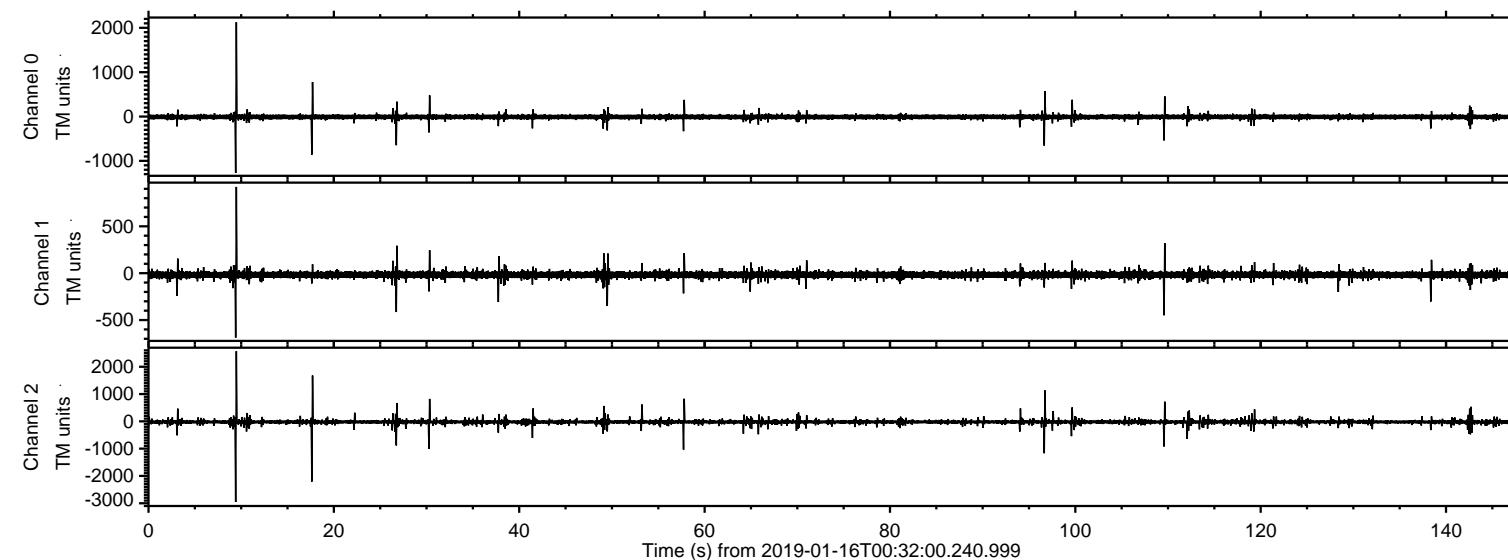
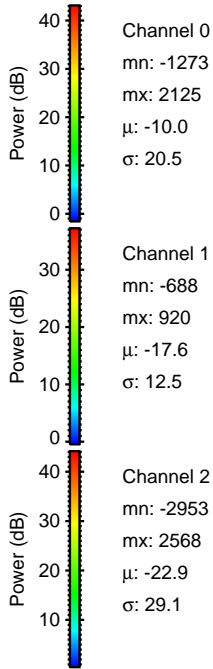
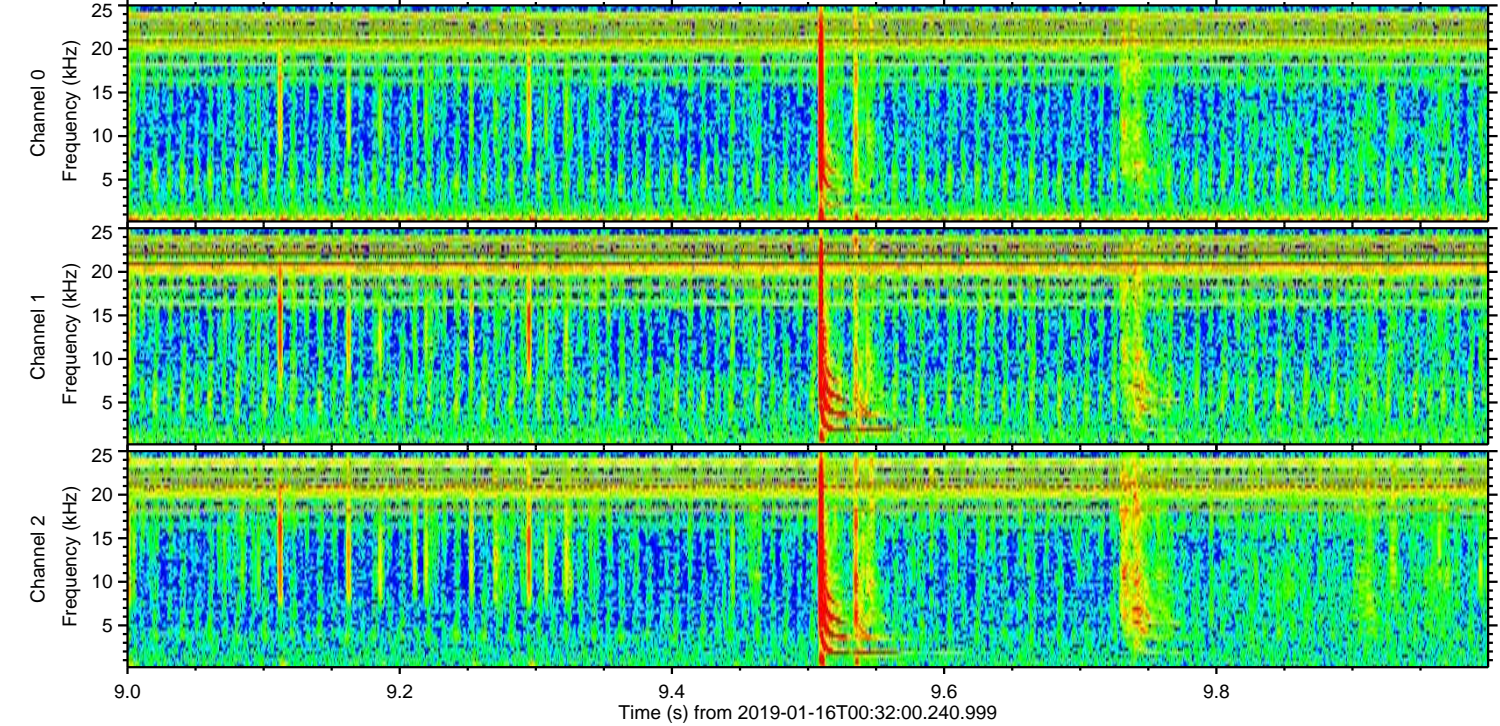
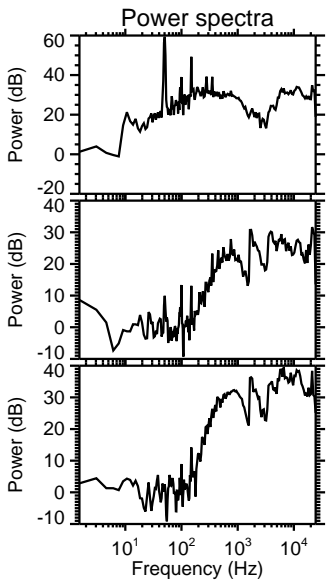
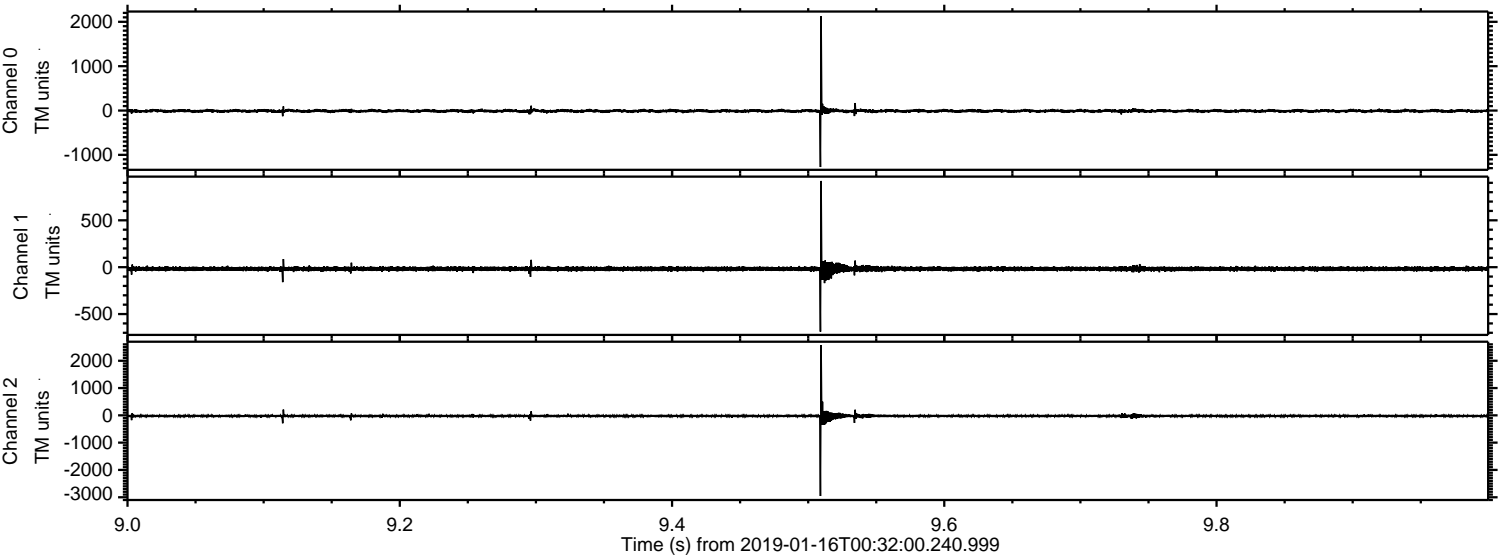


ELMAVAN 3D WAVEFORMS (Measured data sampled at 50 kHz) 51000 packets of 144 samples from 2019-01-16T00:32:00.240.999.

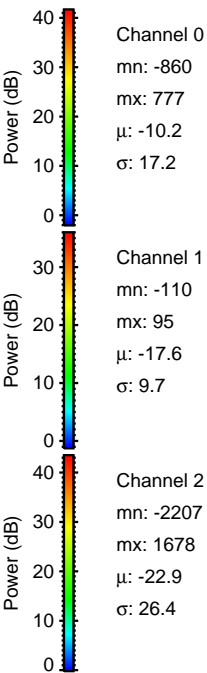
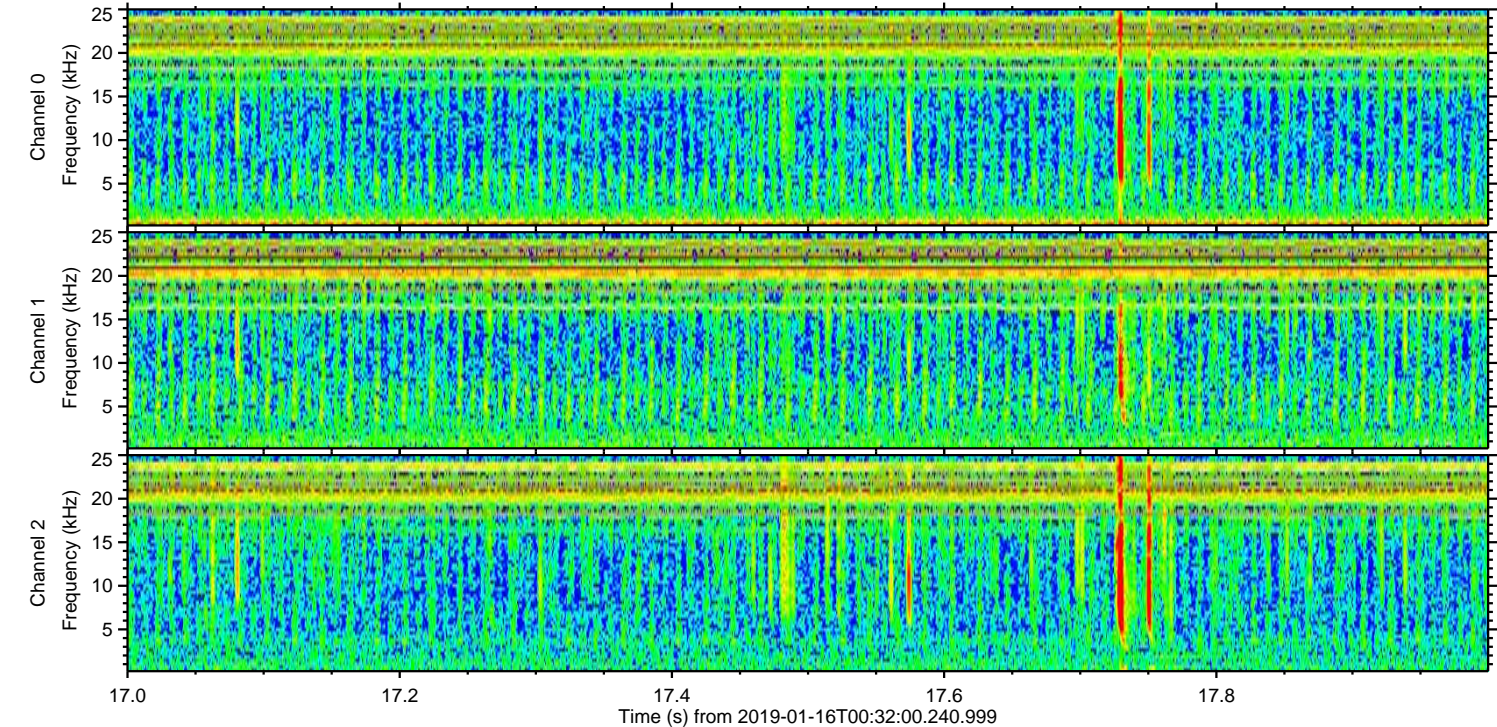
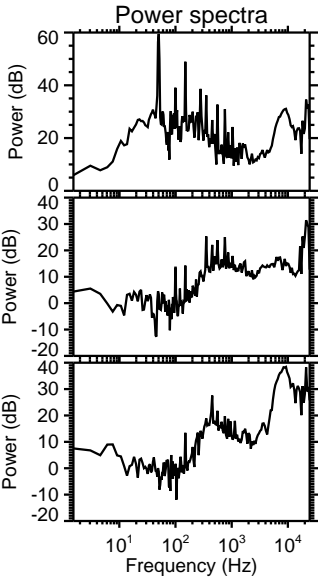
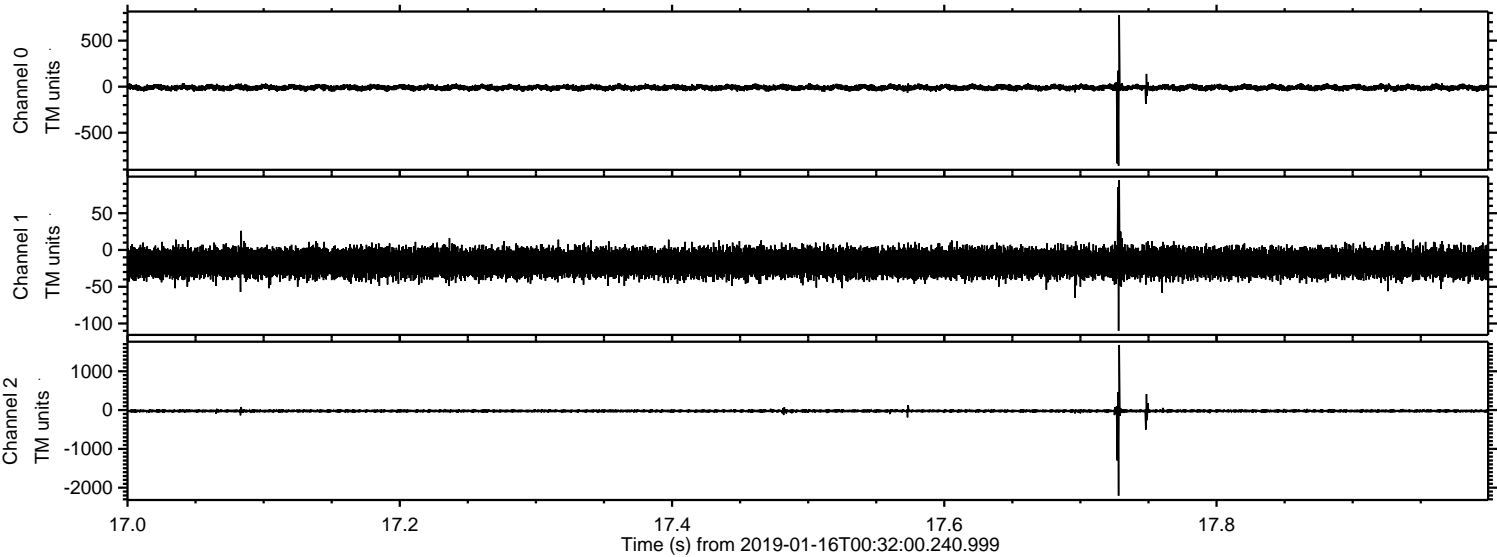
Processed Wed Jan 16 01:39:37 2019 by ELM ver.2012-10-06 from 001__elm20190116_003159__dat00.bin



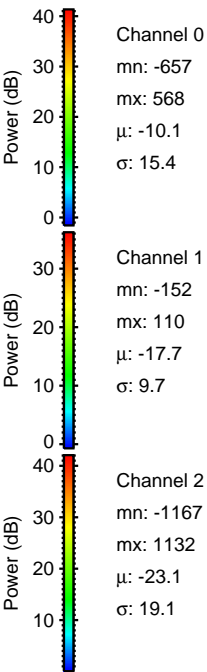
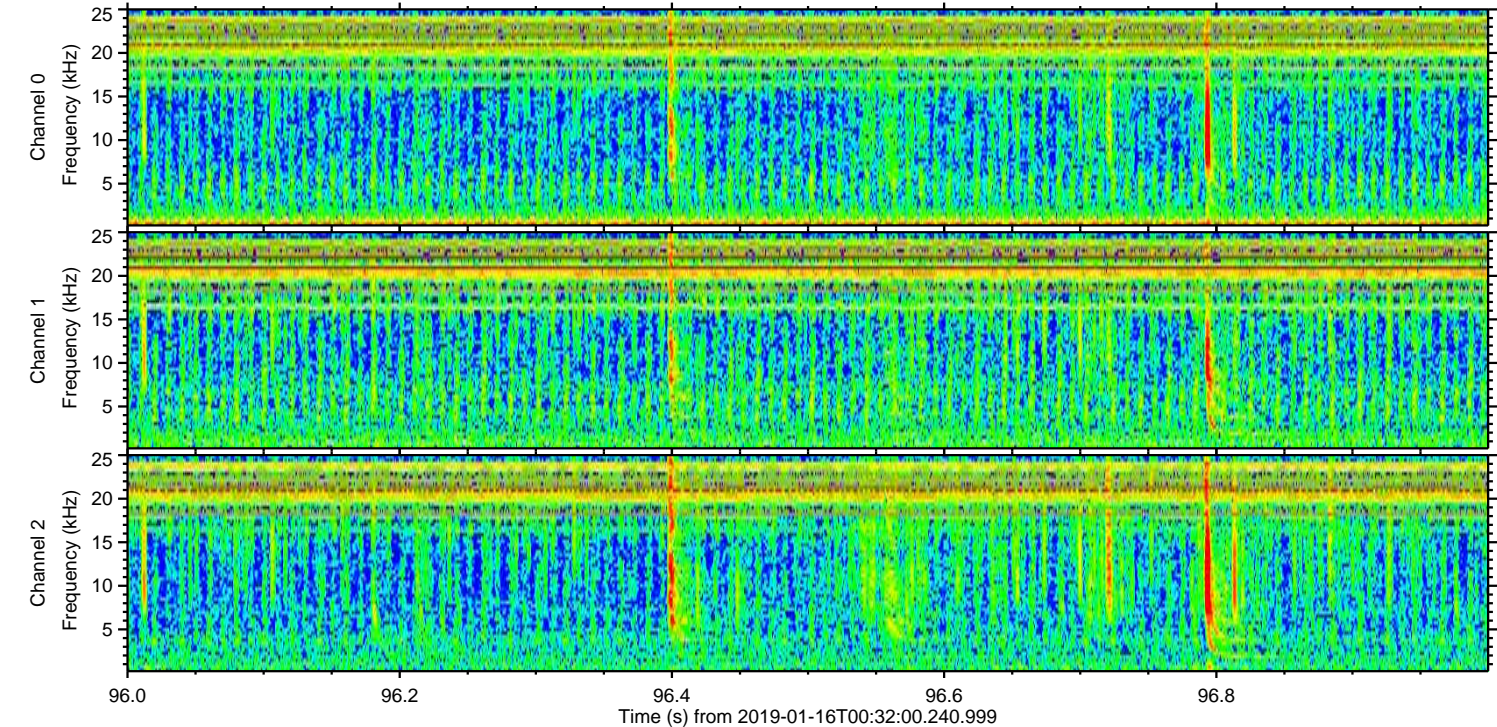
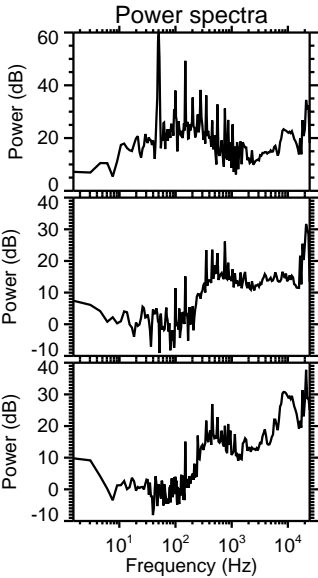
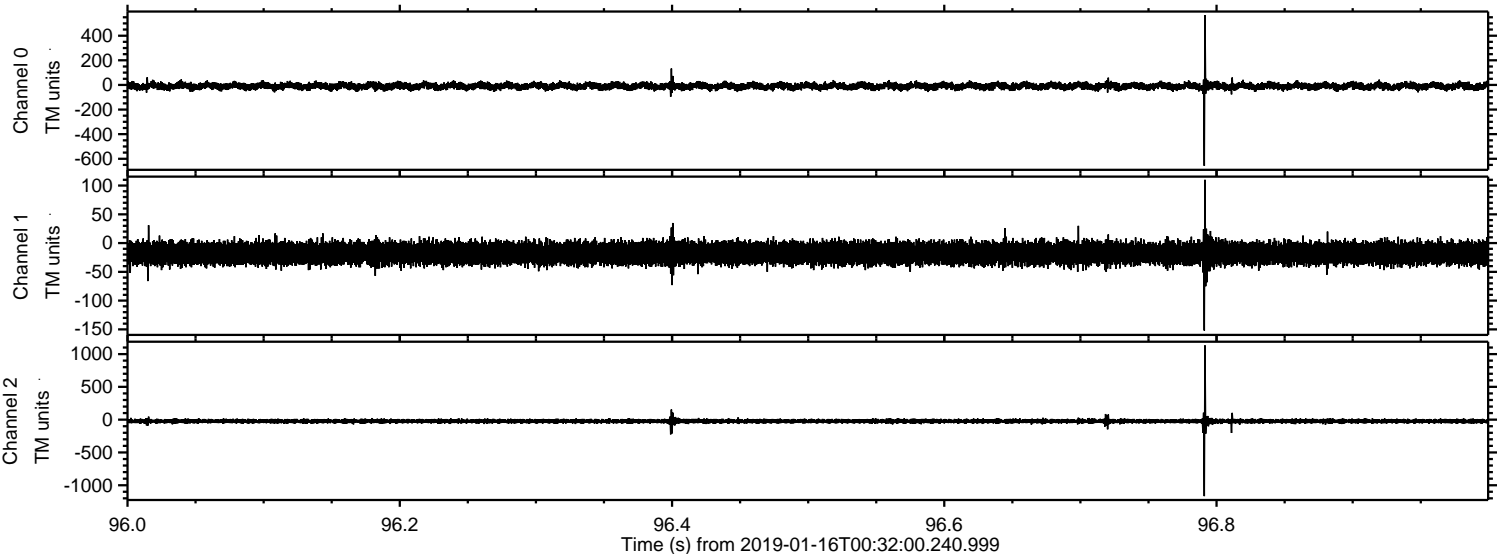
Processed Wed Jan 16 01:39:42 2019 by ELM ver.2012-10-06 from 001__elm20190116_003159__dat00.bin



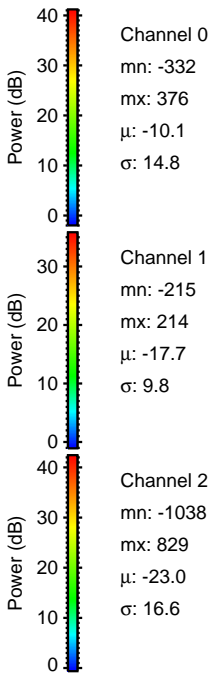
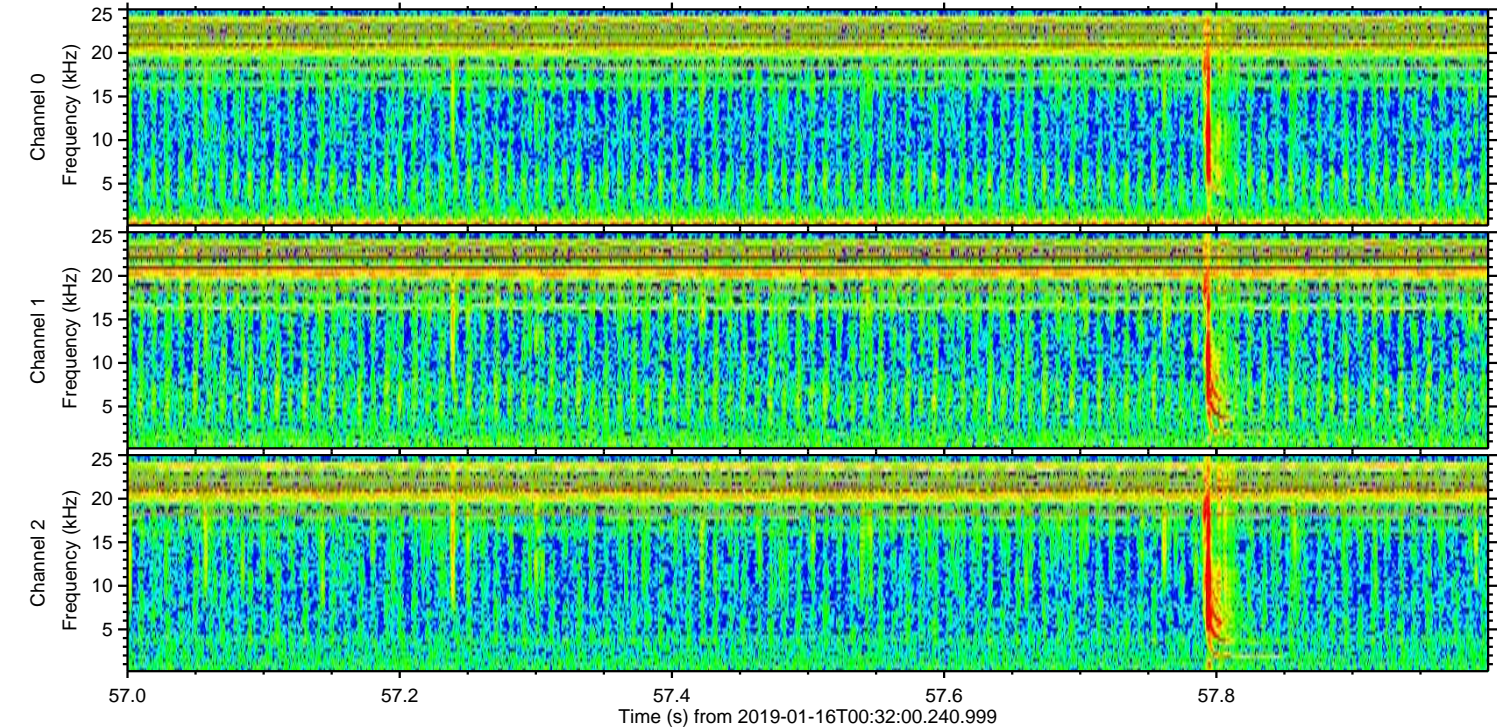
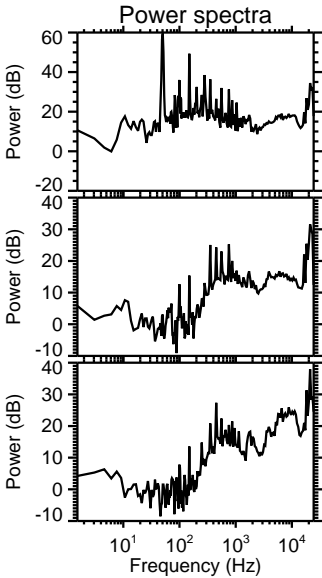
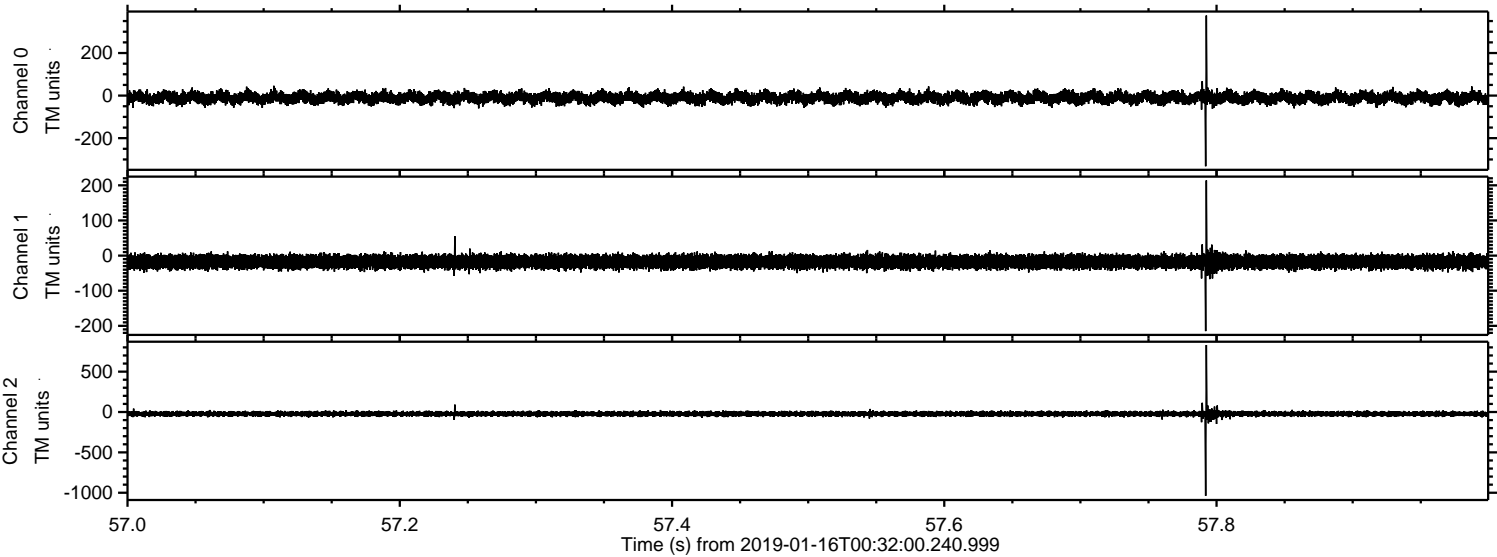
Processed Wed Jan 16 01:39:43 2019 by ELM ver.2012-10-06 from 001__elm20190116_003159__dat00.bin



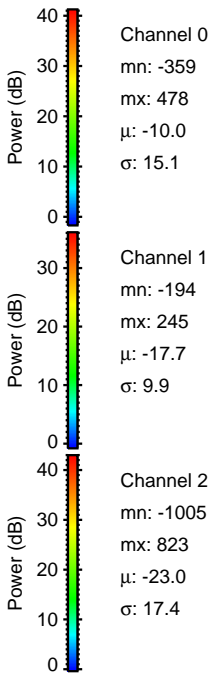
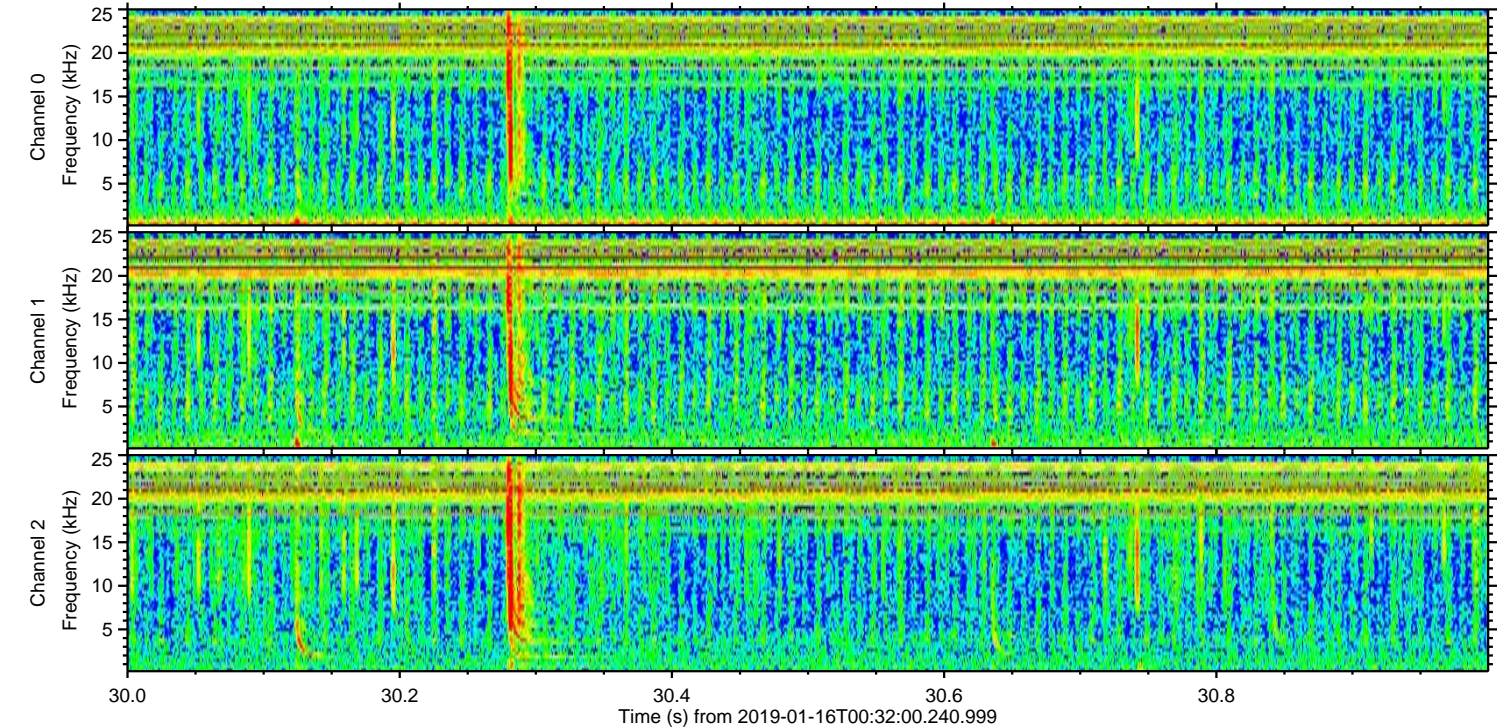
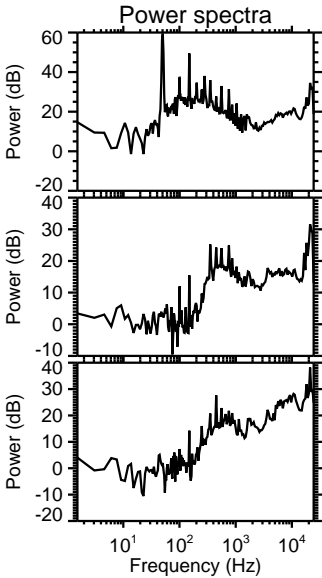
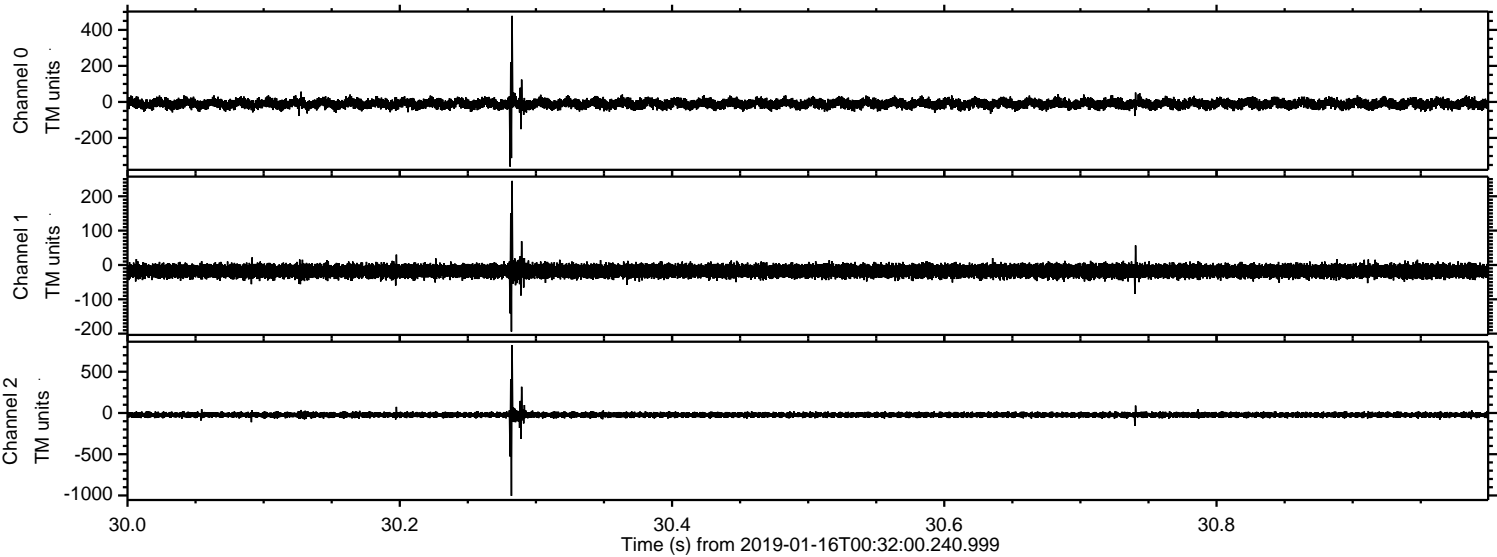
Processed Wed Jan 16 01:39:43 2019 by ELM ver.2012-10-06 from 001__elm20190116_003159__dat00.bin



Processed Wed Jan 16 01:39:44 2019 by ELM ver.2012-10-06 from 001__elm20190116_003159__dat00.bin

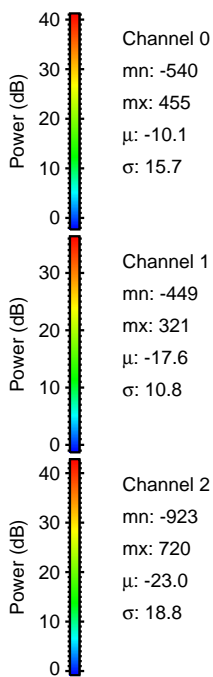
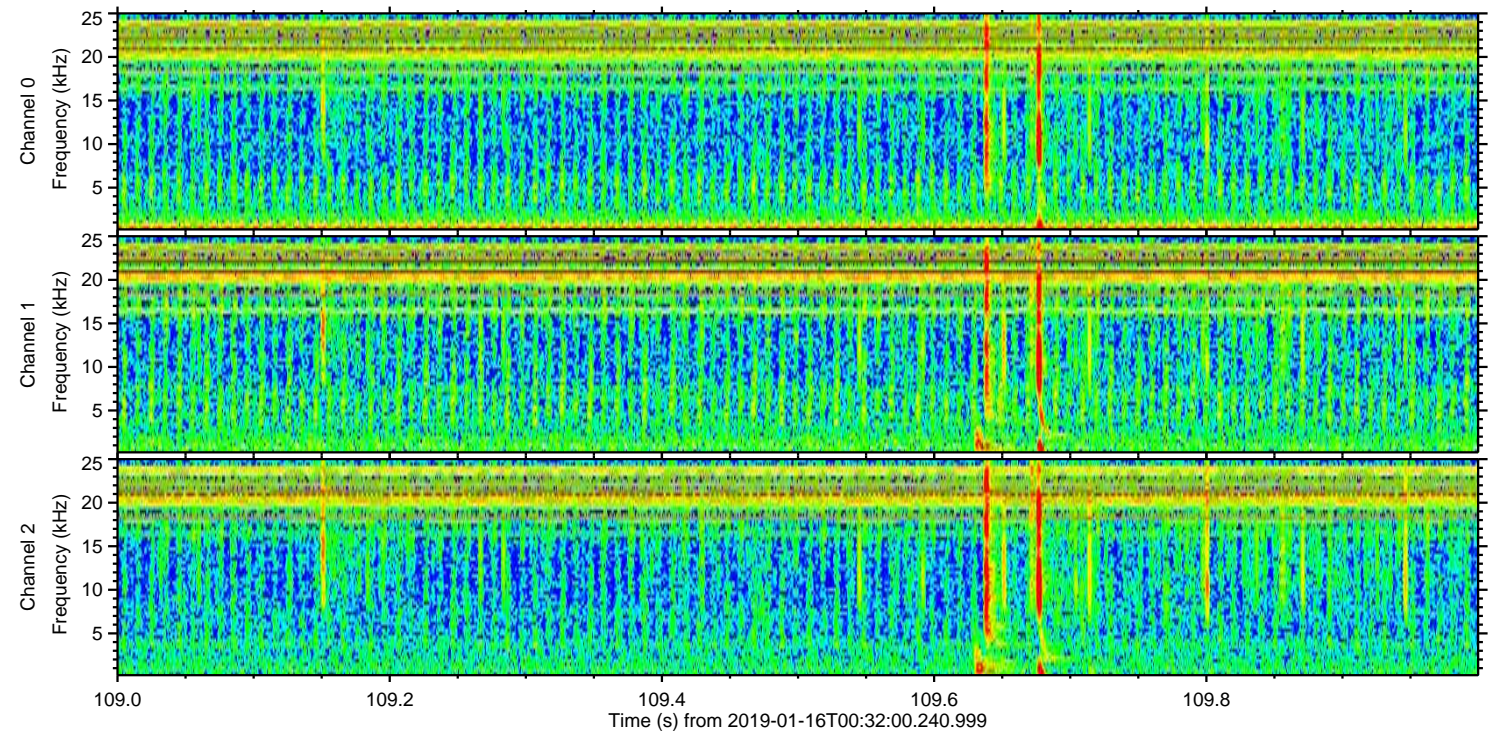
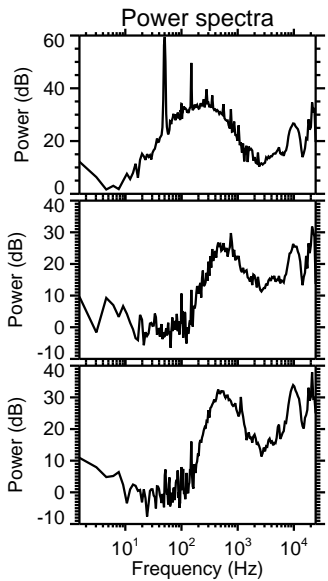
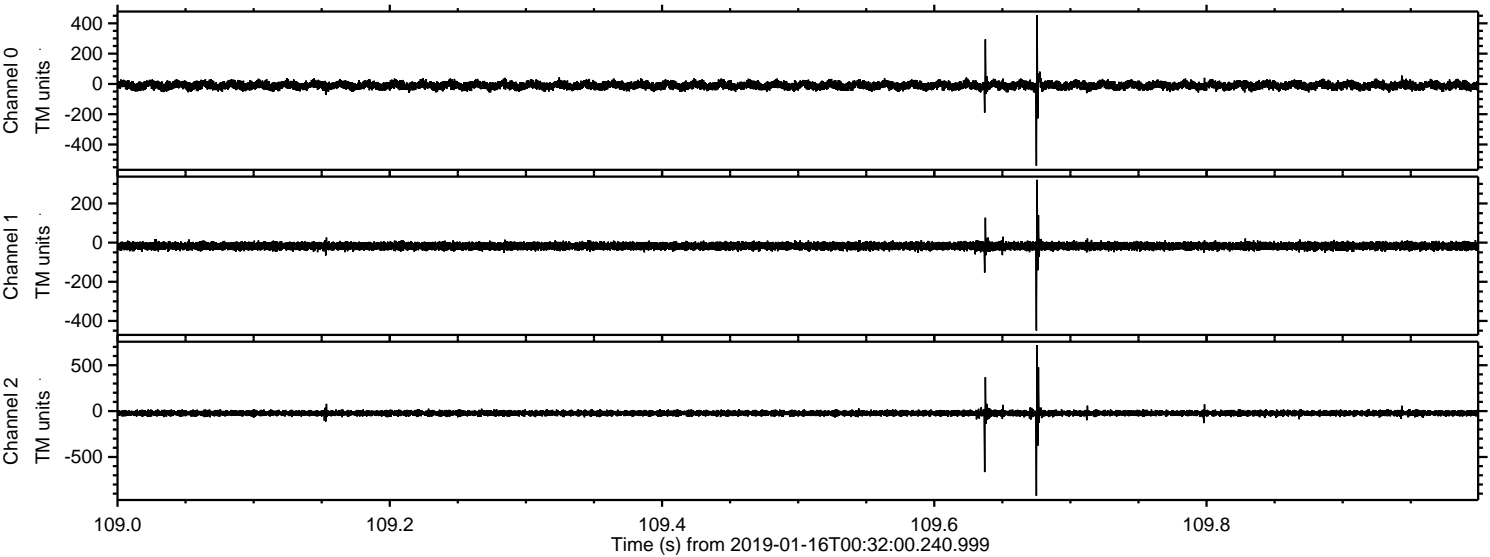


Processed Wed Jan 16 01:39:45 2019 by ELM ver.2012-10-06 from 001__elm20190116_003159__dat00.bin



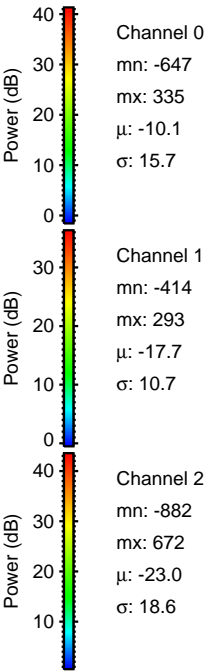
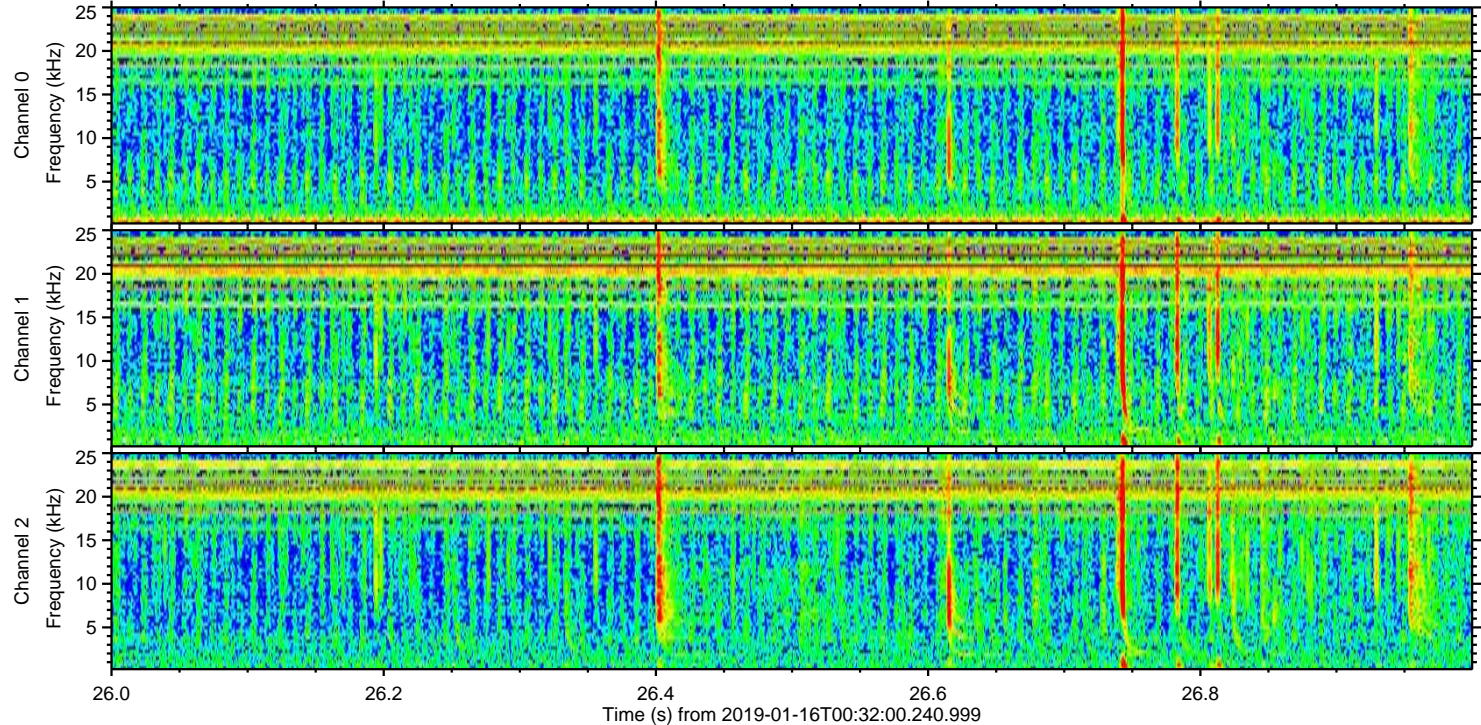
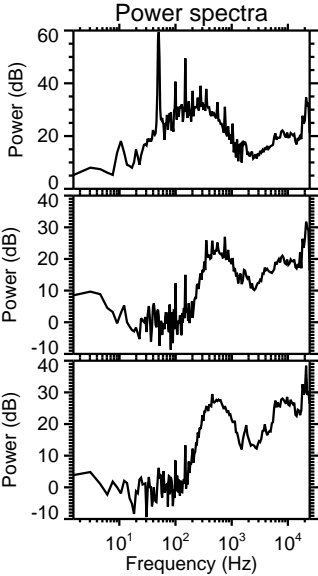
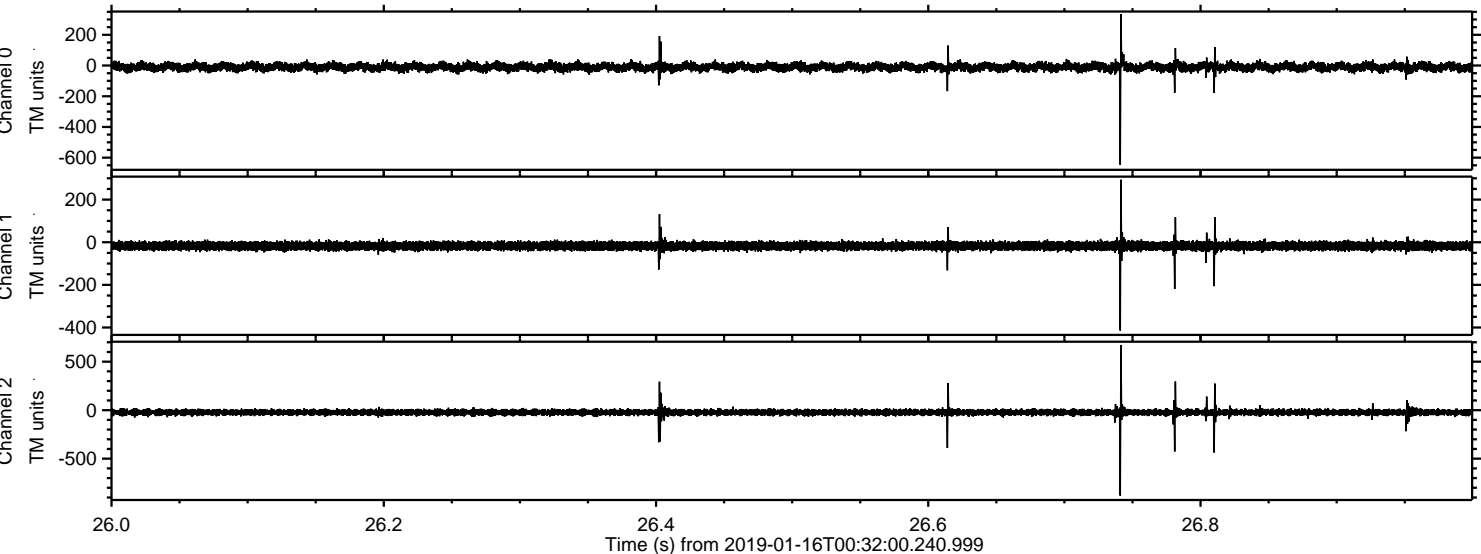
ELMAVAN 3D WAVEFORMS (Measured data sampled at 50 kHz) 51000 packets of 144 samples from 2019-01-16T00:32:00.240.999. Part 110/147

Processed Wed Jan 16 01:39:45 2019 by ELM ver.2012-10-06 from 001__elm20190116_003159__dat00.bin



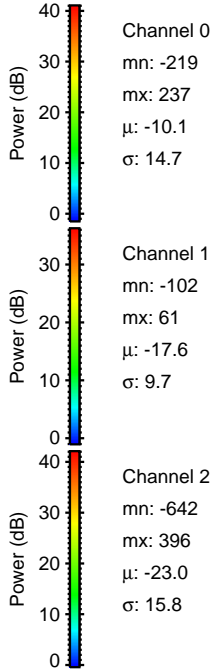
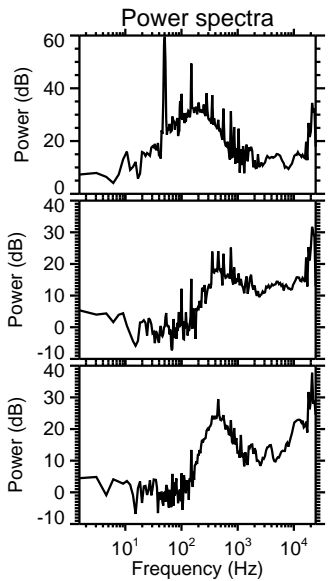
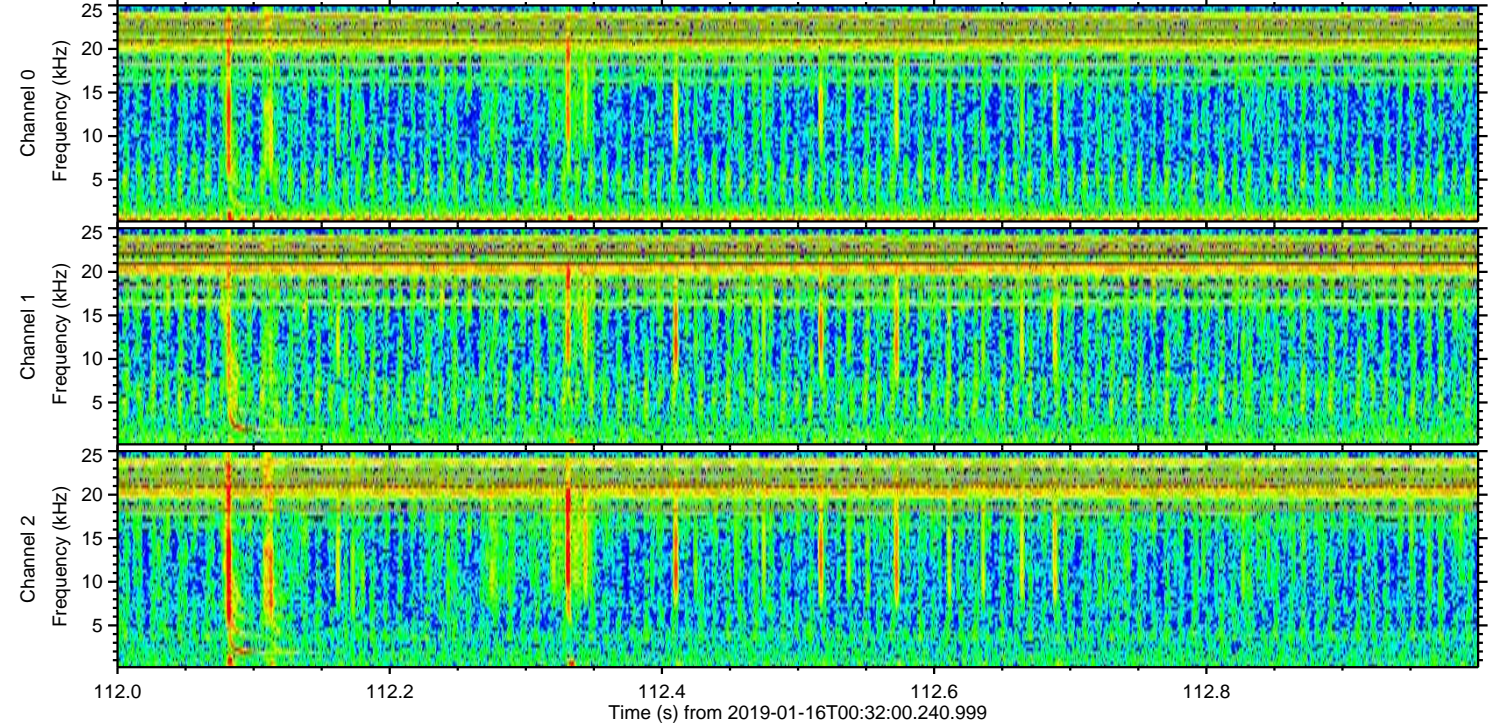
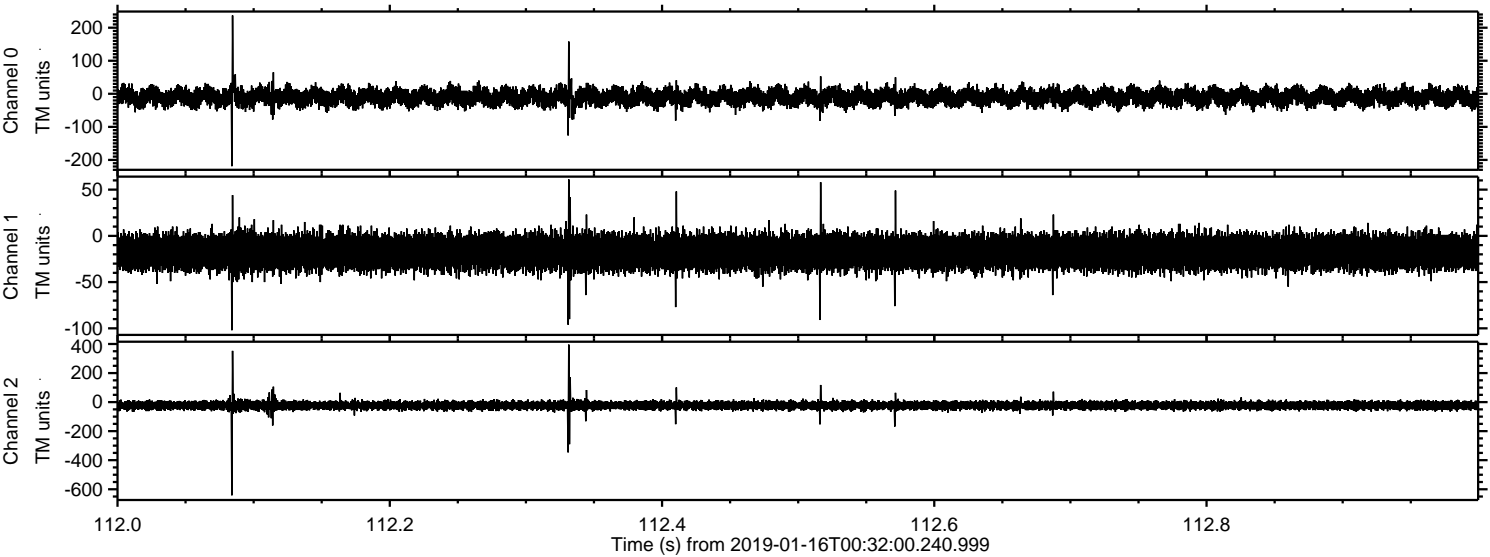
ELMAVAN 3D WAVEFORMS (Measured data sampled at 50 kHz) 51000 packets of 144 samples from 2019-01-16T00:32:00.240.999. Part 27/147

Processed Wed Jan 16 01:39:46 2019 by ELM ver.2012-10-06 from 001__elm20190116_003159__dat00.bin

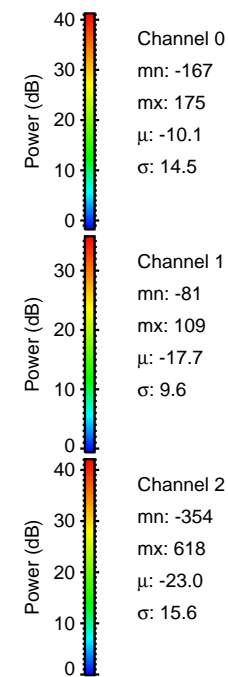
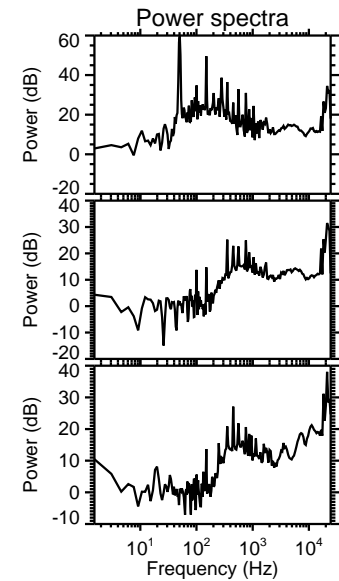
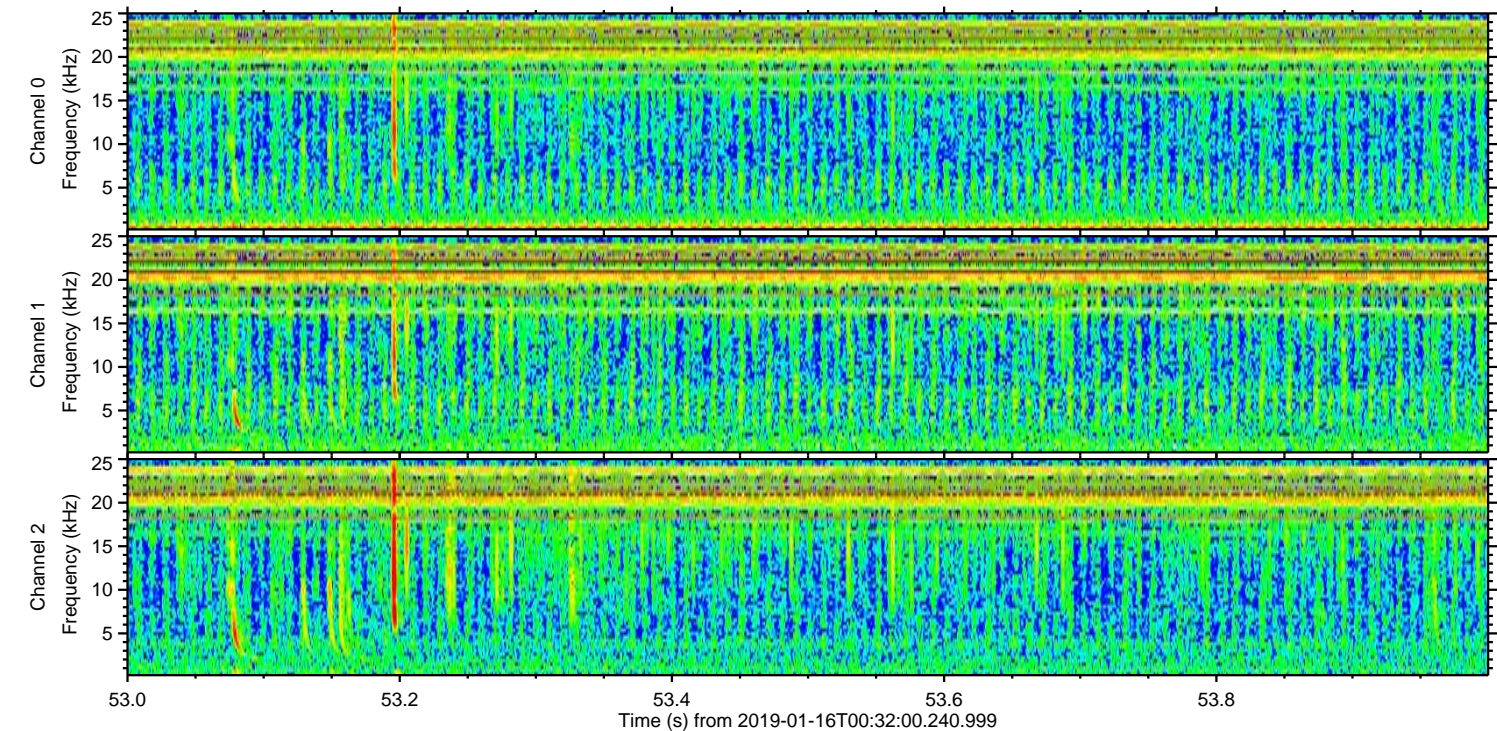
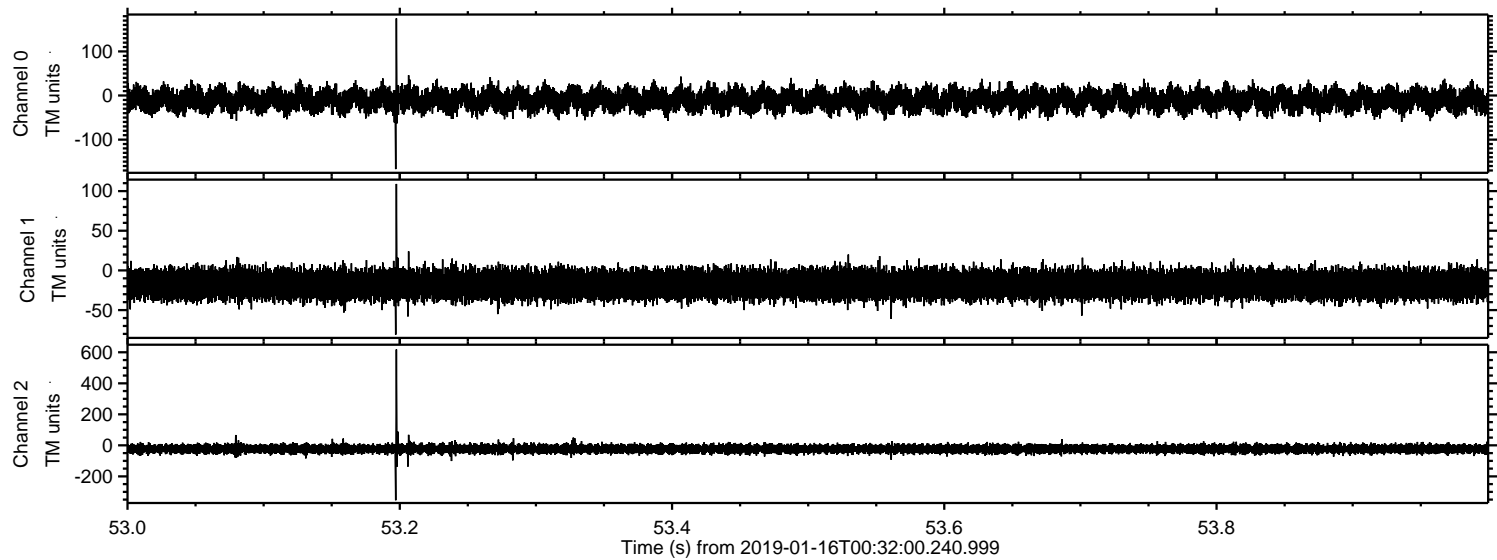


ELMAVAN 3D WAVEFORMS (Measured data sampled at 50 kHz) 51000 packets of 144 samples from 2019-01-16T00:32:00.240.999. Part 113/147

Processed Wed Jan 16 01:39:46 2019 by ELM ver.2012-10-06 from 001__elm20190116_003159__dat00.bin



Processed Wed Jan 16 01:39:47 2019 by ELM ver.2012-10-06 from 001__elm20190116_003159__dat00.bin



Channel 0
mn: -167
mx: 175
 μ : -10.1
 σ : 14.5

Channel 1
mn: -81
mx: 109
 μ : -17.7
 σ : 9.6

Channel 2
mn: -354
mx: 618
 μ : -23.0
 σ : 15.6

Processed Wed Jan 16 01:39:48 2019 by ELM ver.2012-10-06 from 001__elm20190116_003159__dat00.bin

