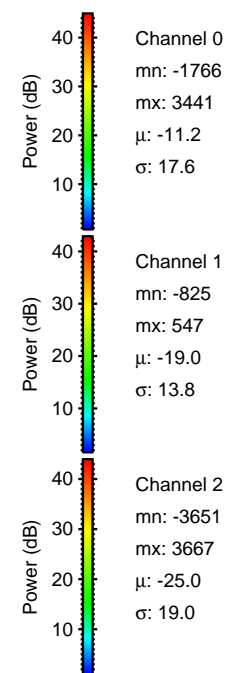
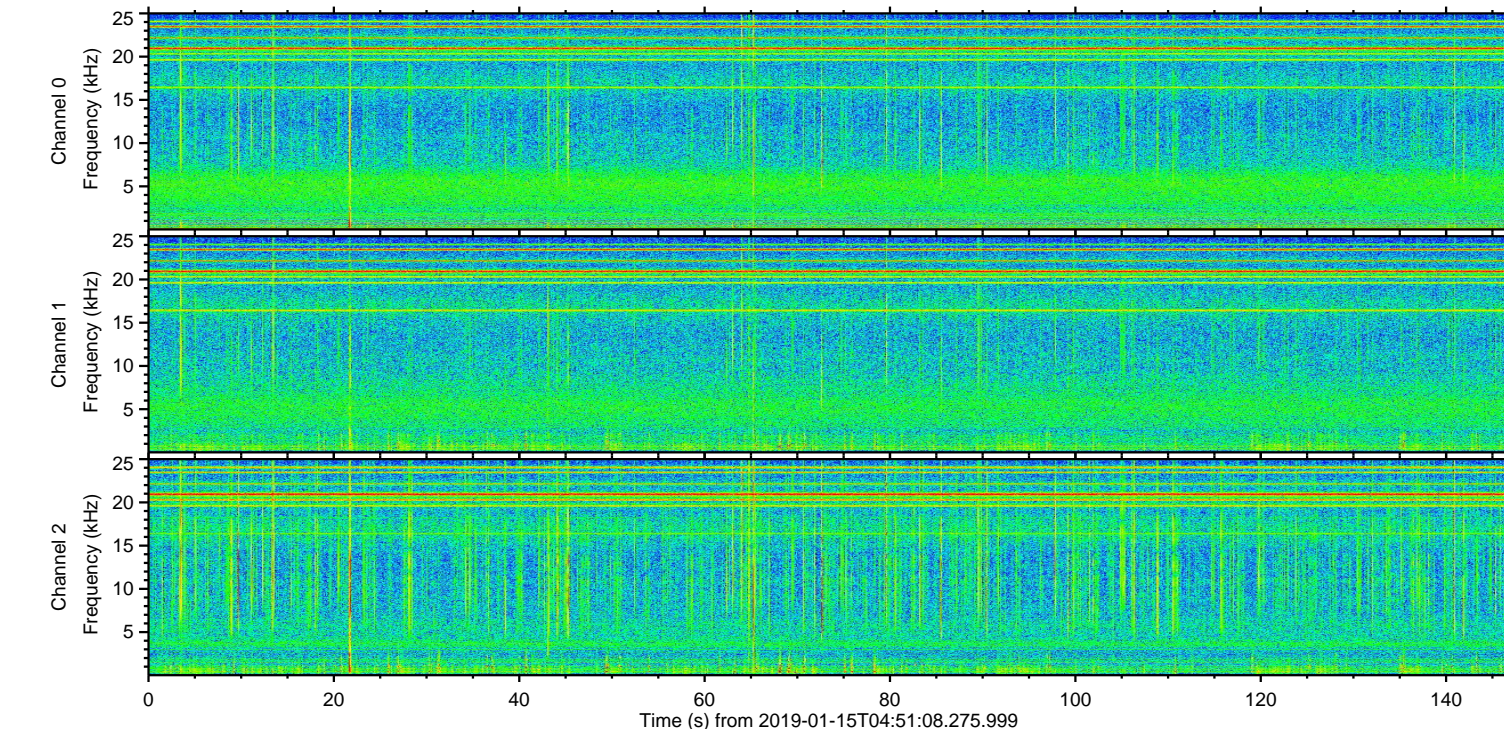
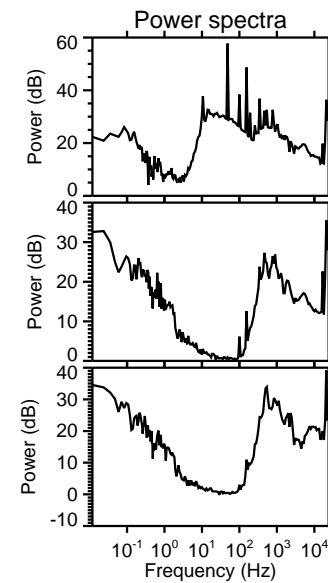
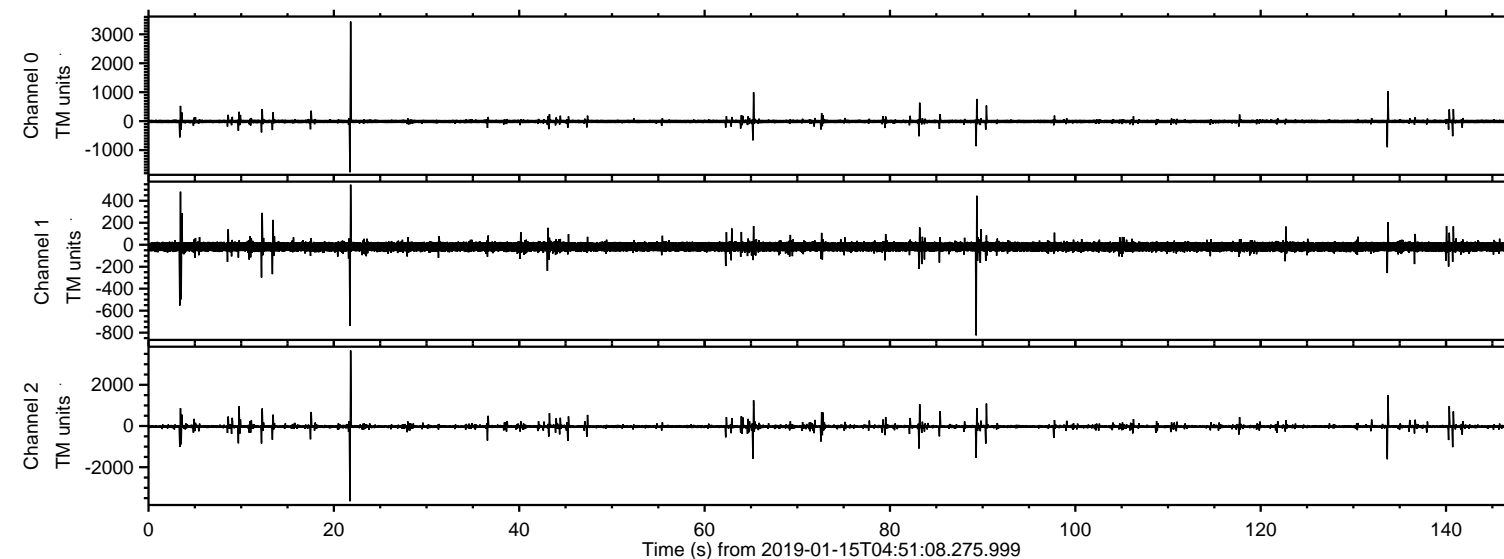
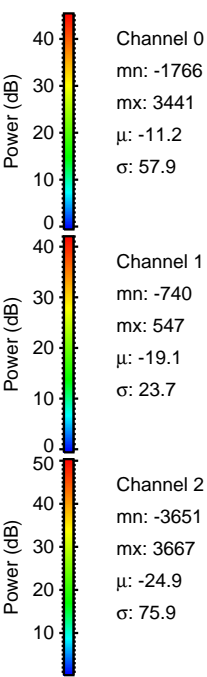
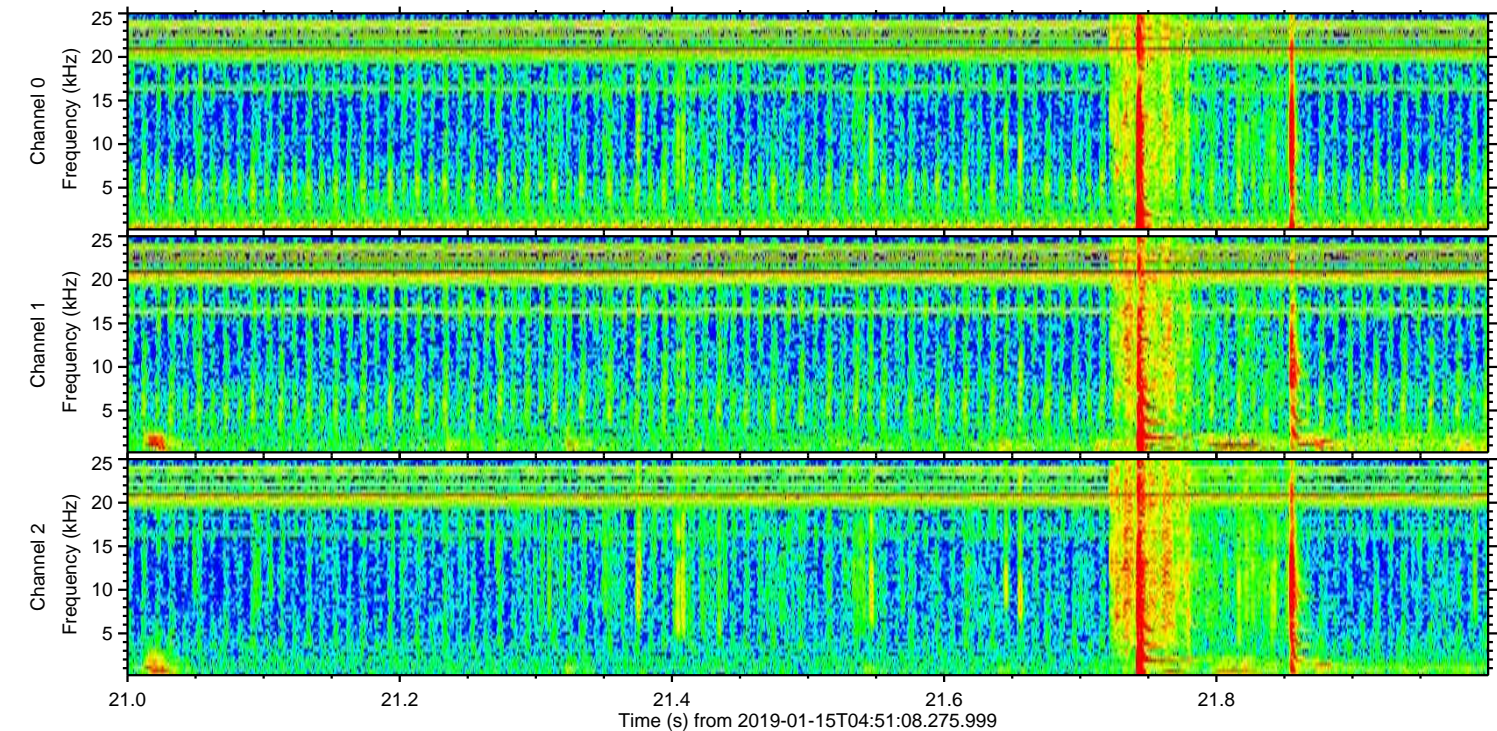
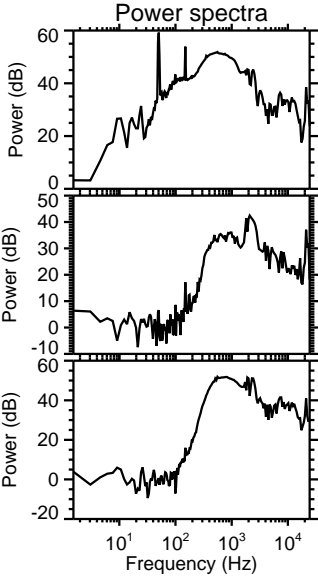
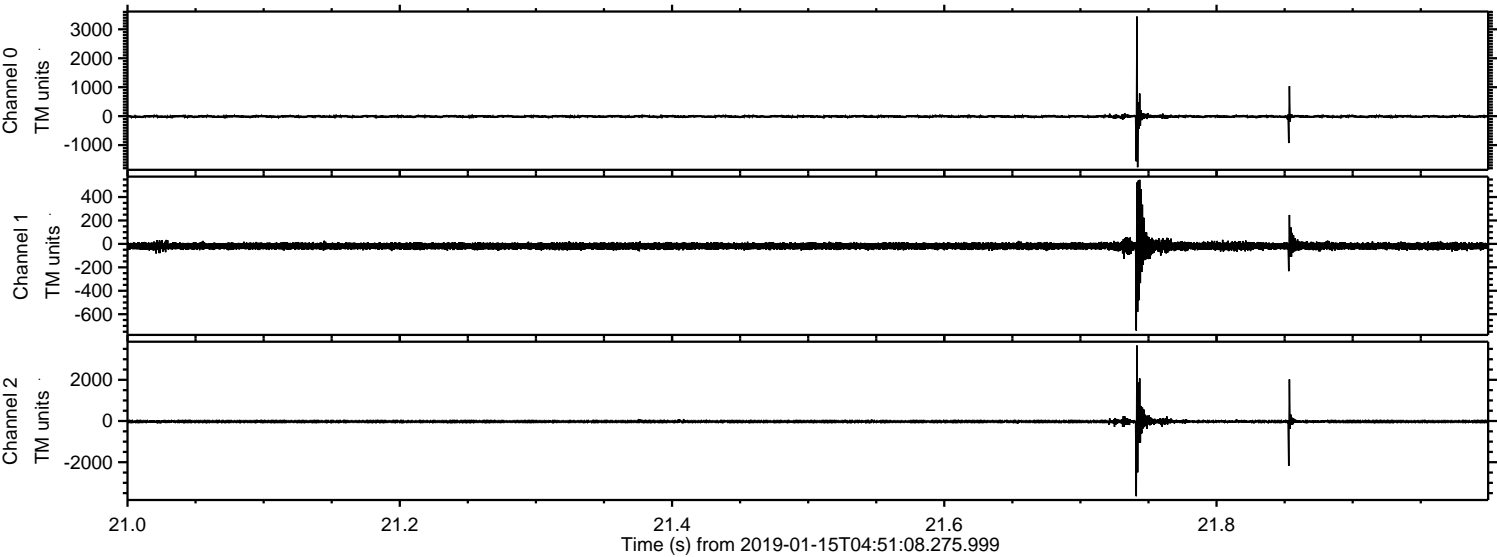


ELMAVAN 3D WAVEFORMS (Measured data sampled at 50 kHz) 51000 packets of 144 samples from 2019-01-15T04:51:08.275.999.

Processed Tue Jan 15 05:58:54 2019 by ELM ver.2012-10-06 from 001__elm20190115_045107__dat00.bin

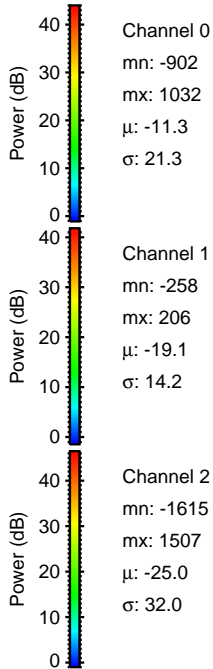
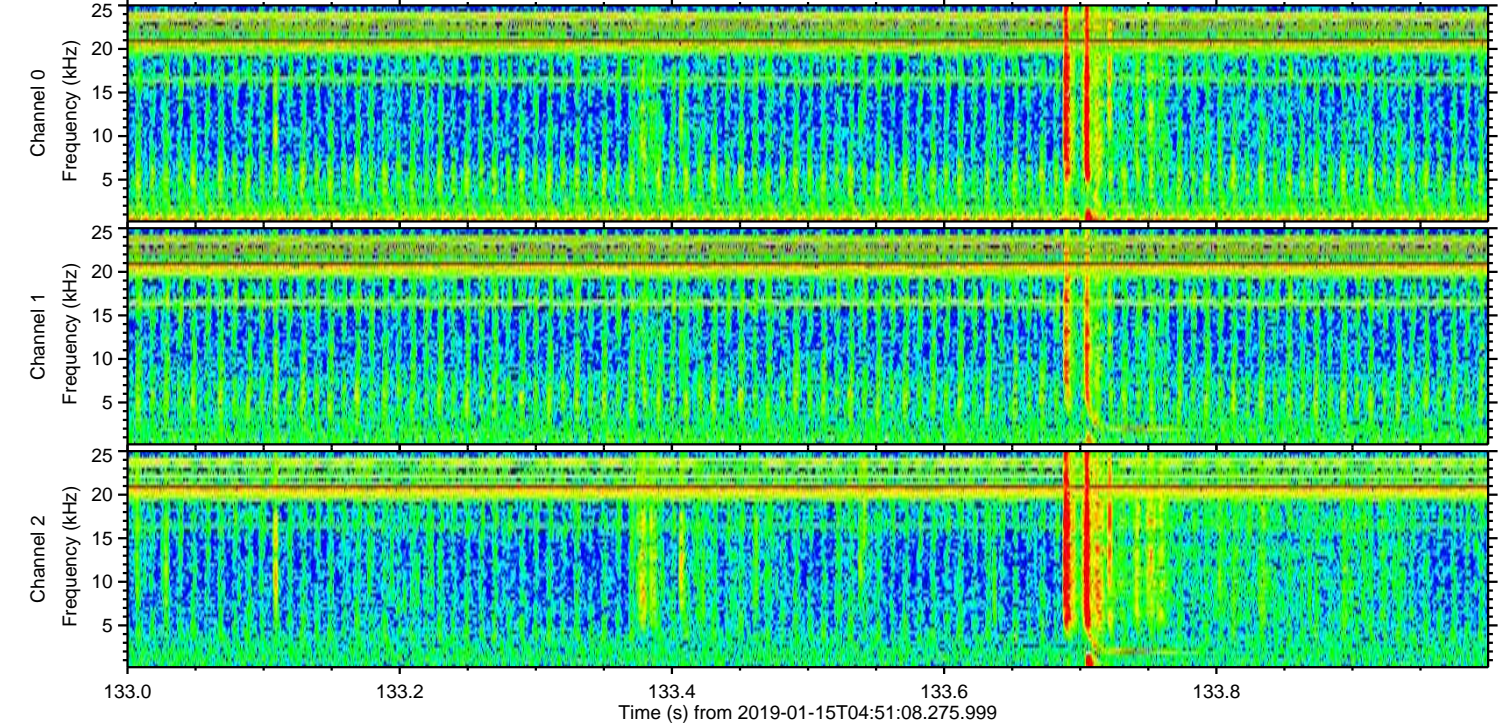
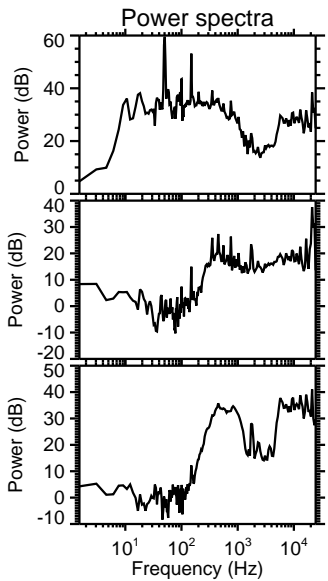
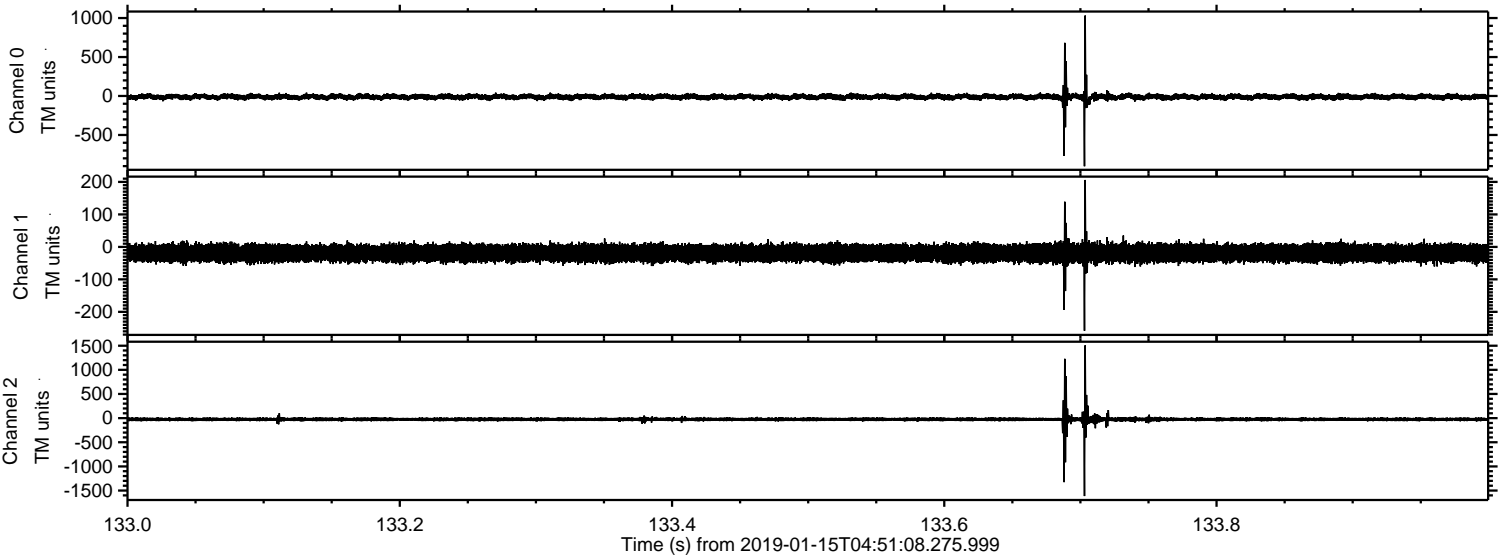


Processed Tue Jan 15 05:58:59 2019 by ELM ver.2012-10-06 from 001__elm20190115_045107__dat00.bin

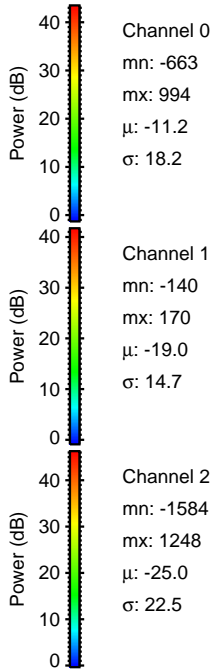
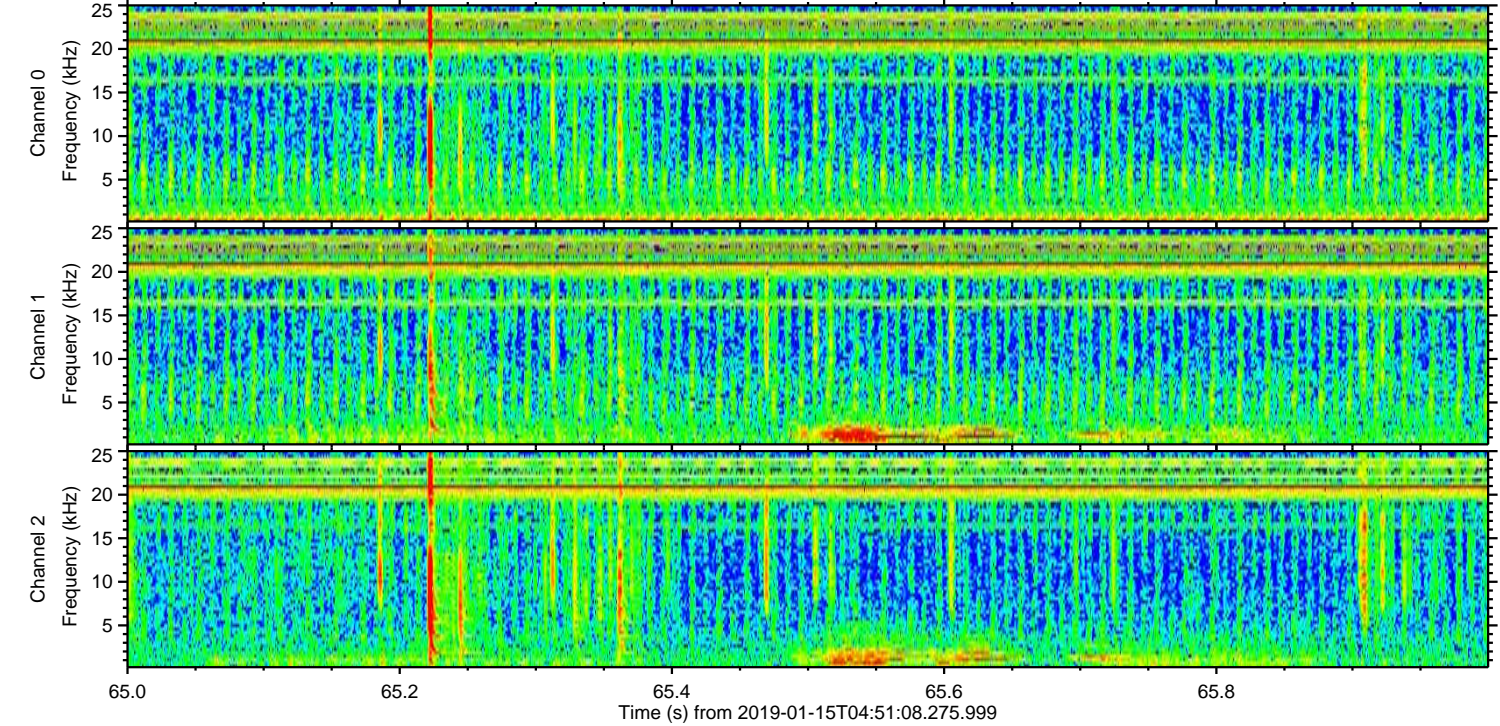
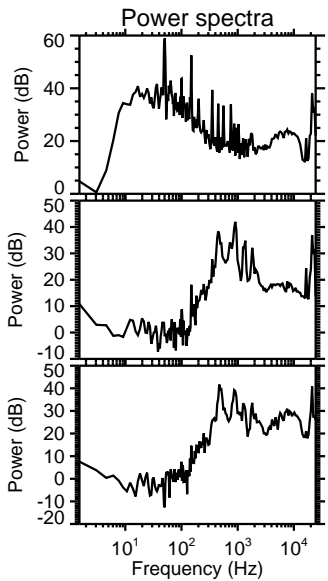
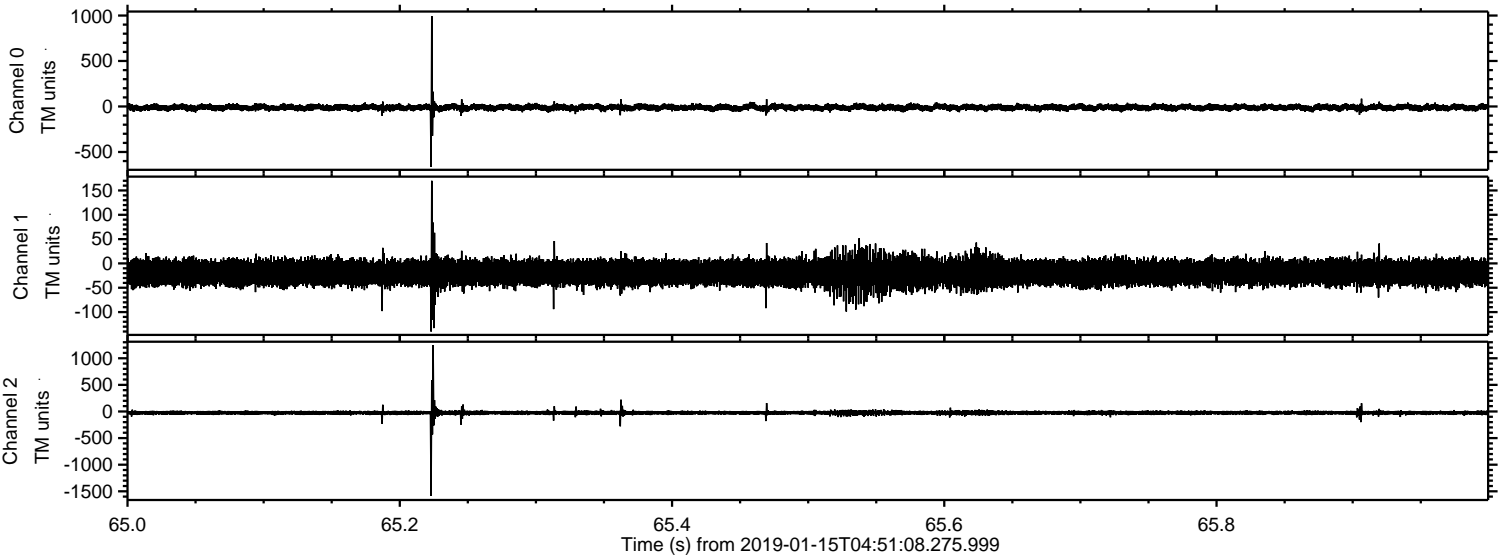


ELMAVAN 3D WAVEFORMS (Measured data sampled at 50 kHz) 51000 packets of 144 samples from 2019-01-15T04:51:08.275.999. Part 134/147

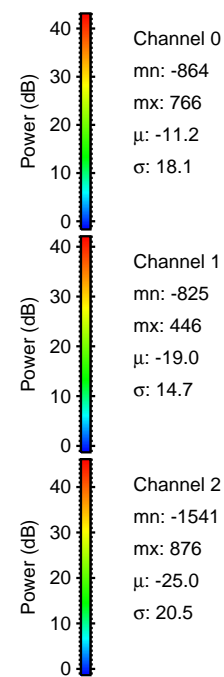
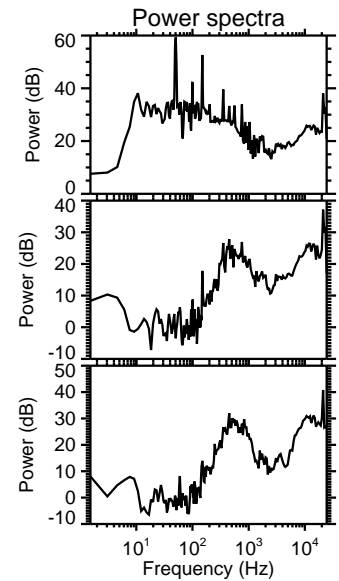
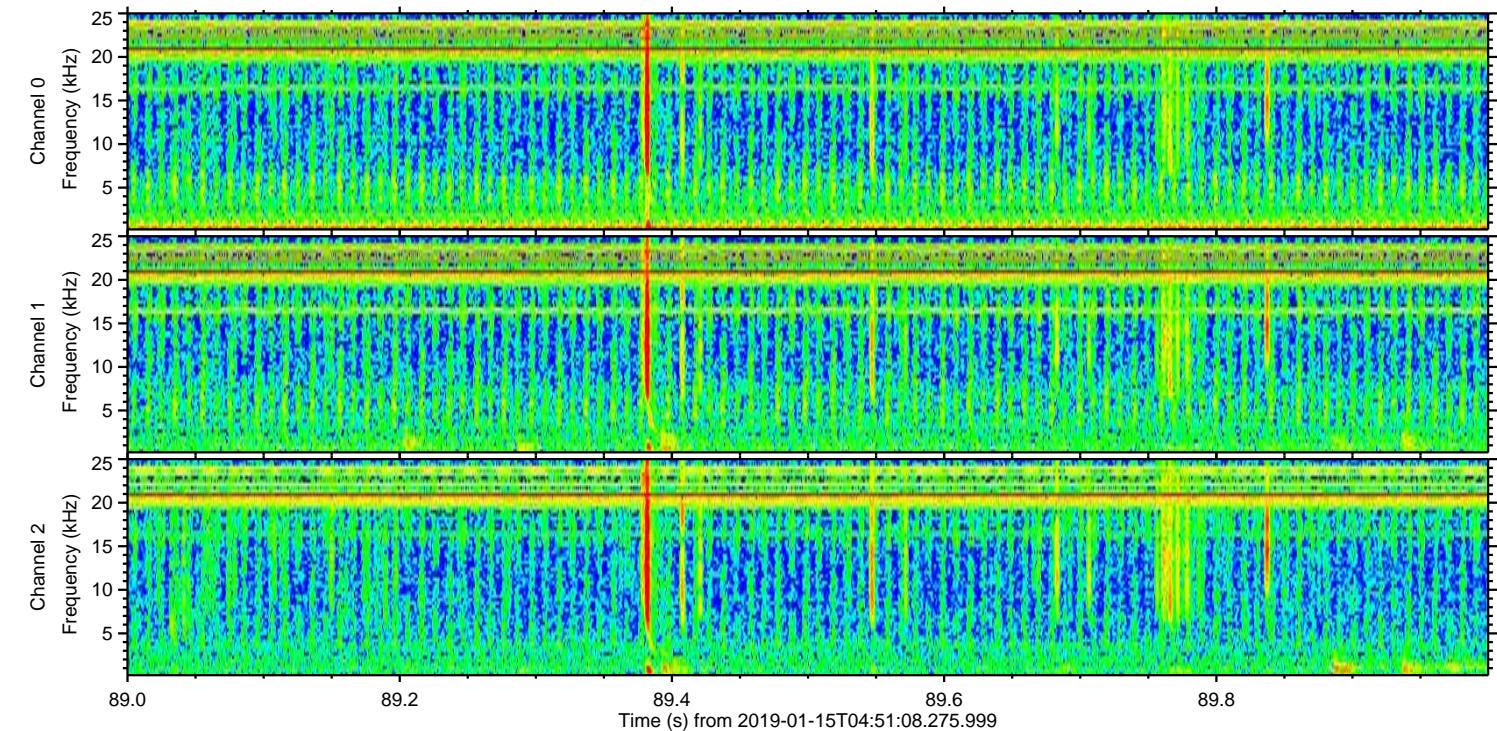
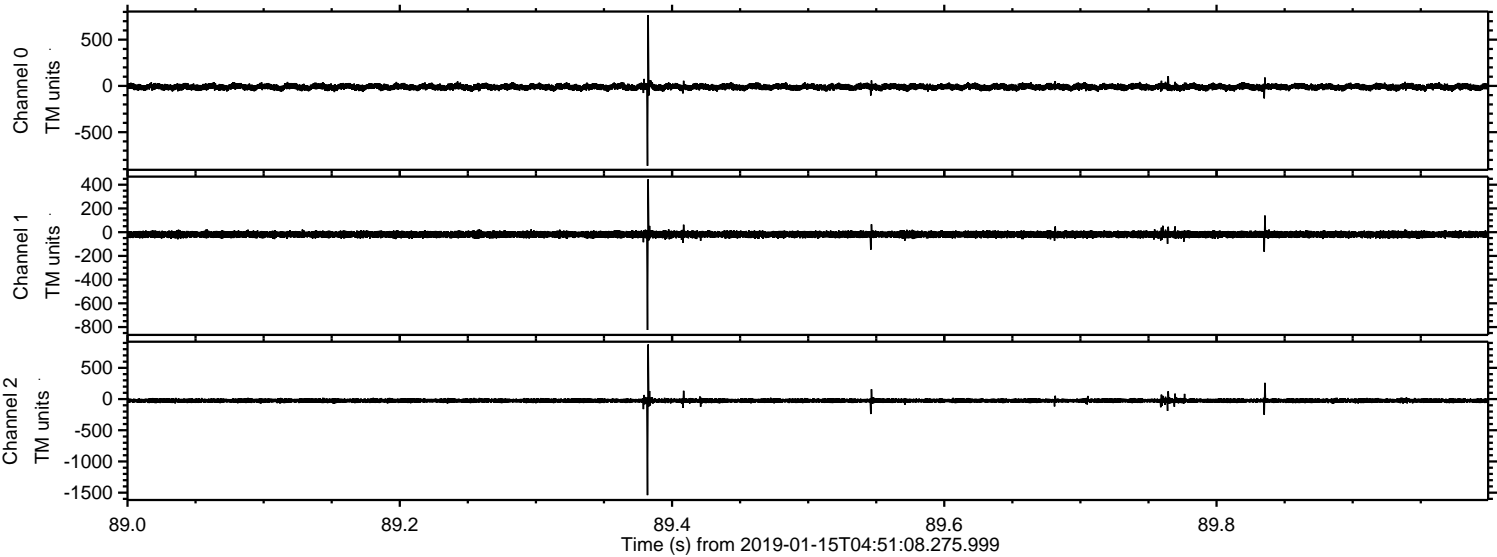
Processed Tue Jan 15 05:59:00 2019 by ELM ver.2012-10-06 from 001__elm20190115_045107__dat00.bin



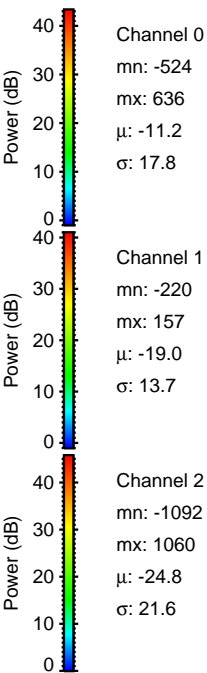
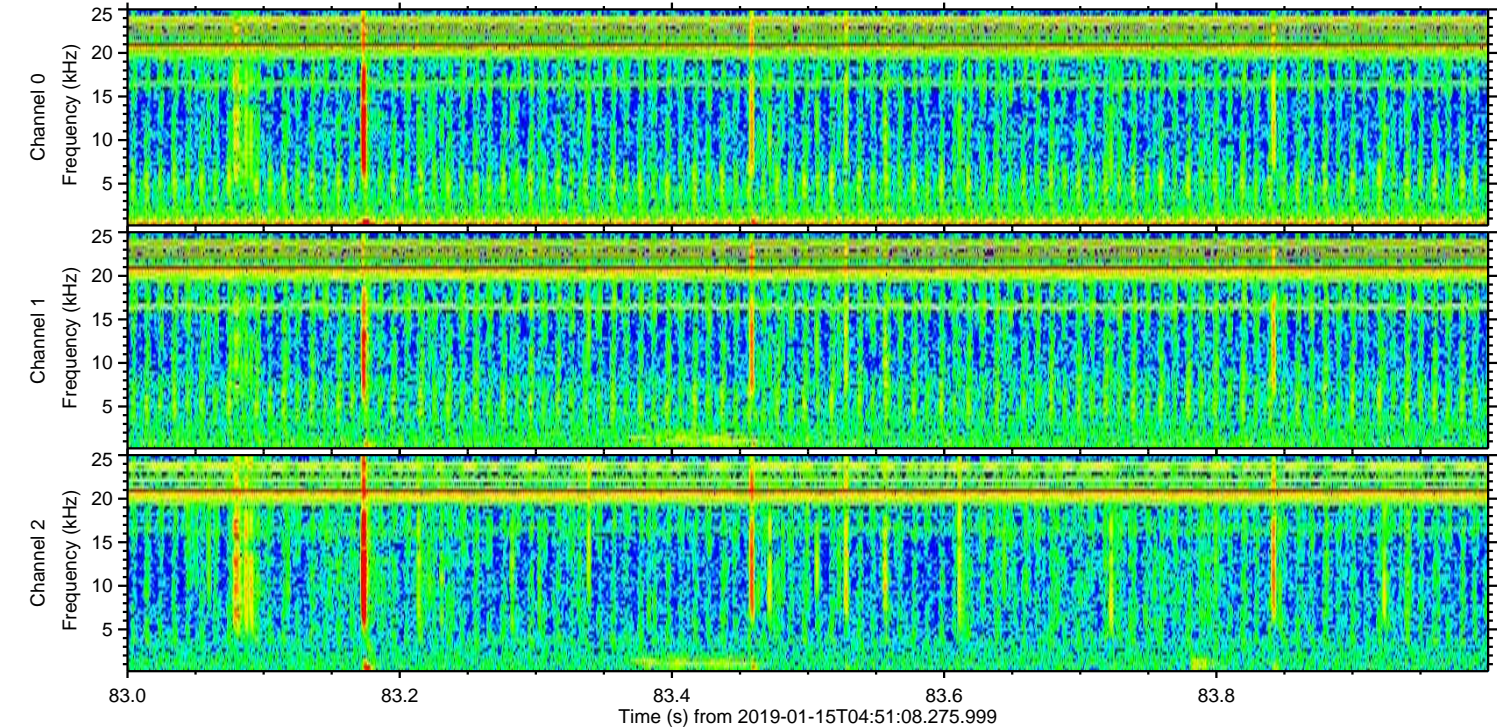
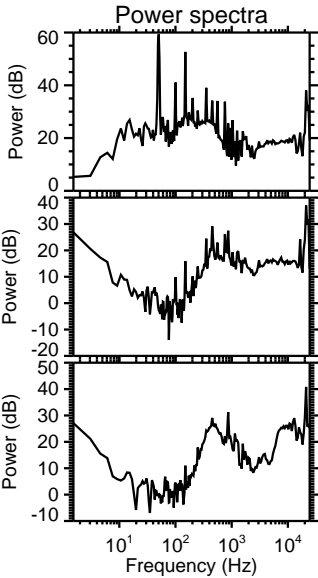
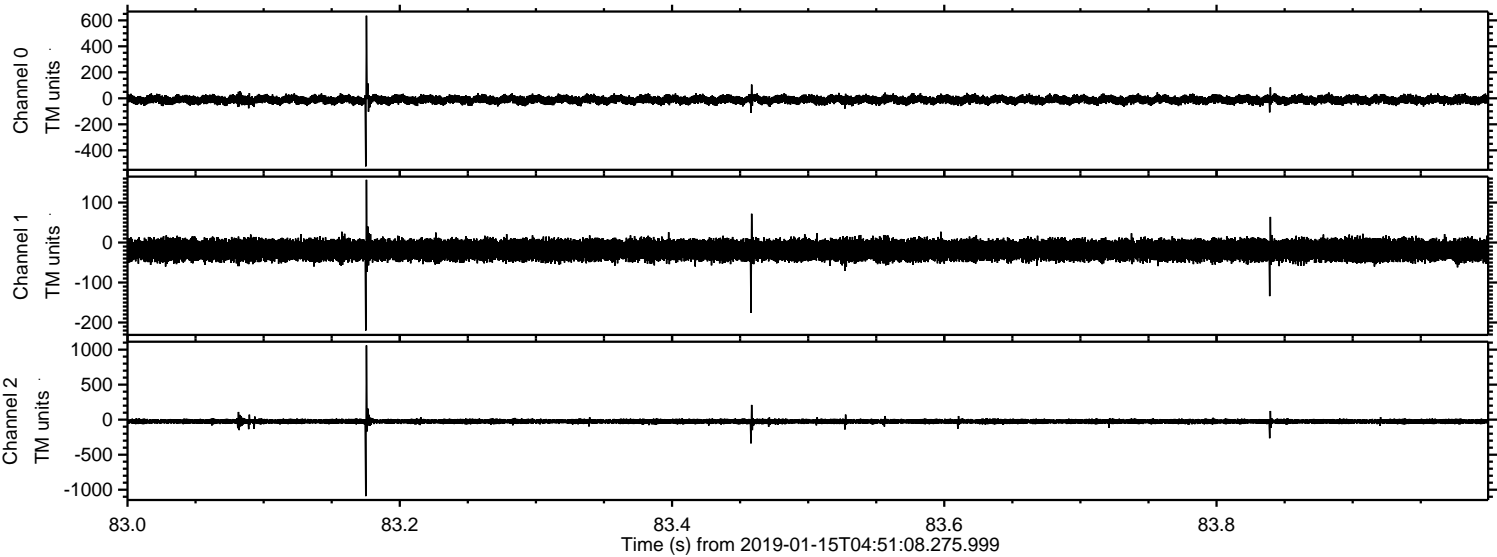
Processed Tue Jan 15 05:59:01 2019 by ELM ver.2012-10-06 from 001__elm20190115_045107__dat00.bin



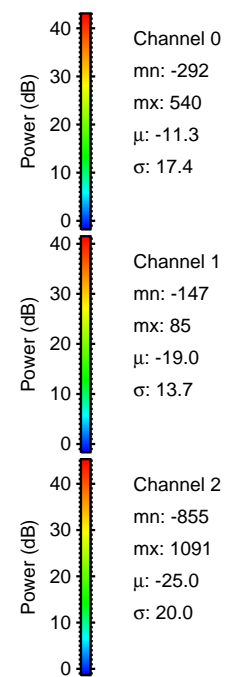
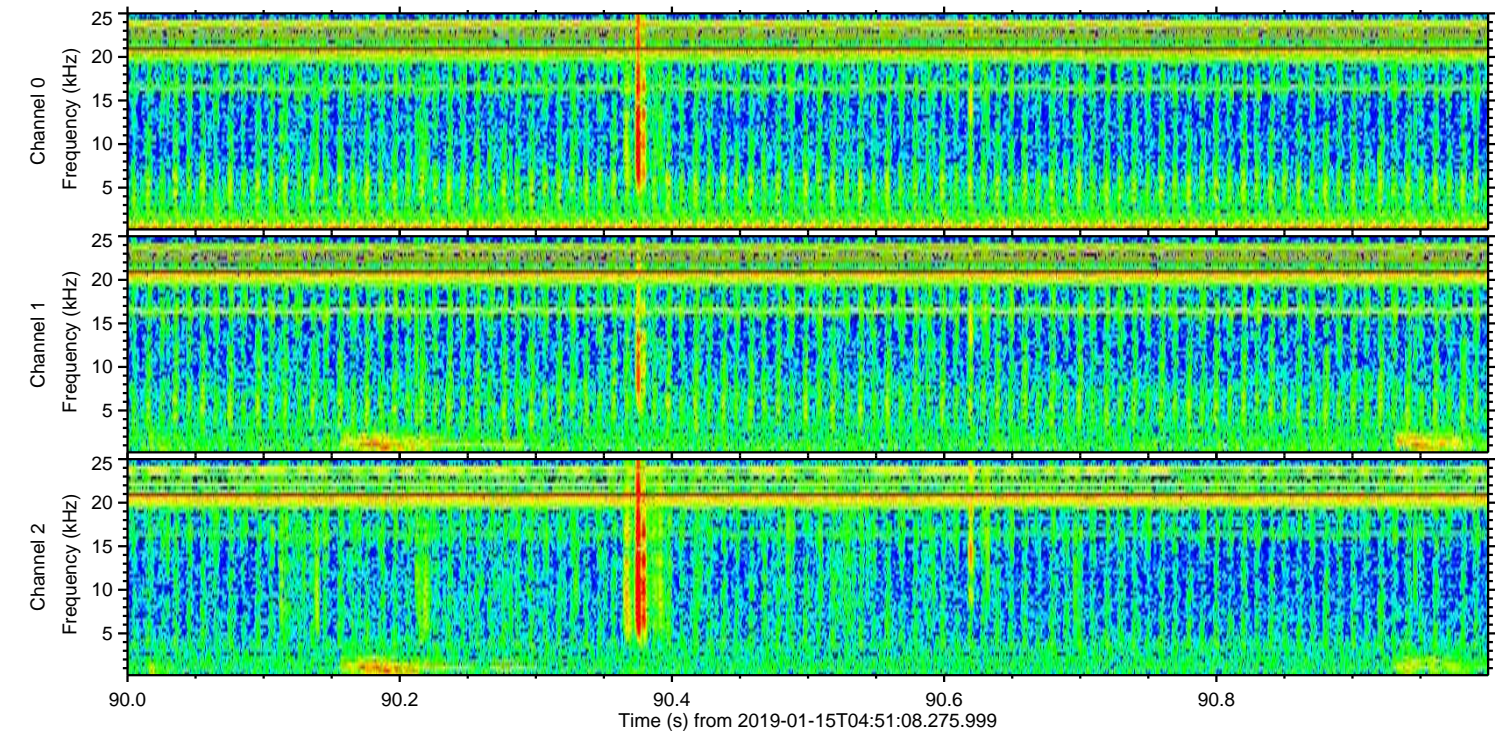
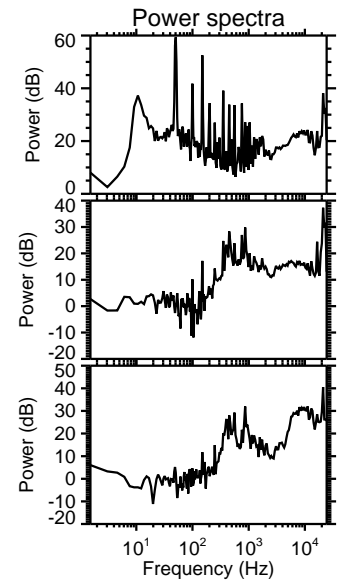
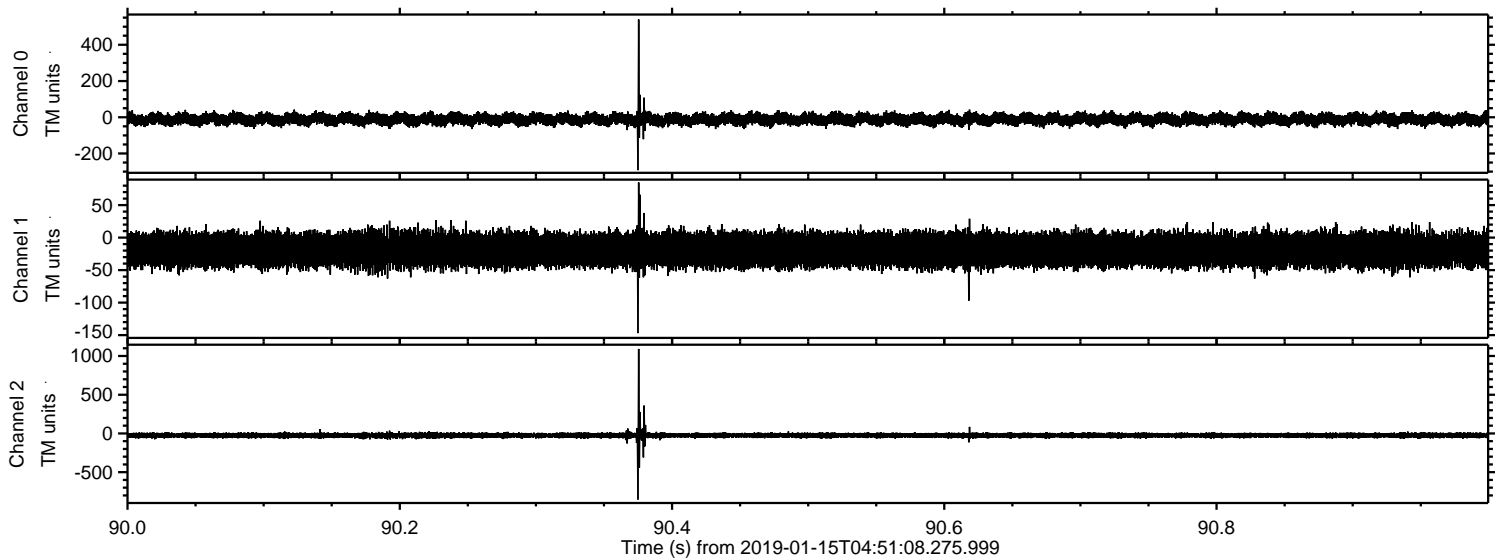
Processed Tue Jan 15 05:59:02 2019 by ELM ver.2012-10-06 from 001__elm20190115_045107__dat00.bin



Processed Tue Jan 15 05:59:02 2019 by ELM ver.2012-10-06 from 001__elm20190115_045107__dat00.bin

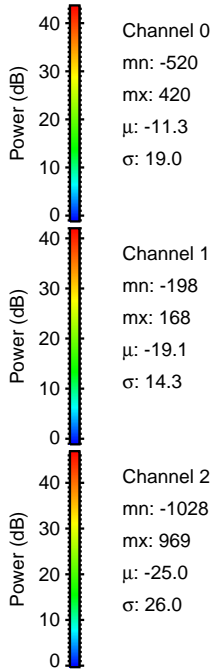
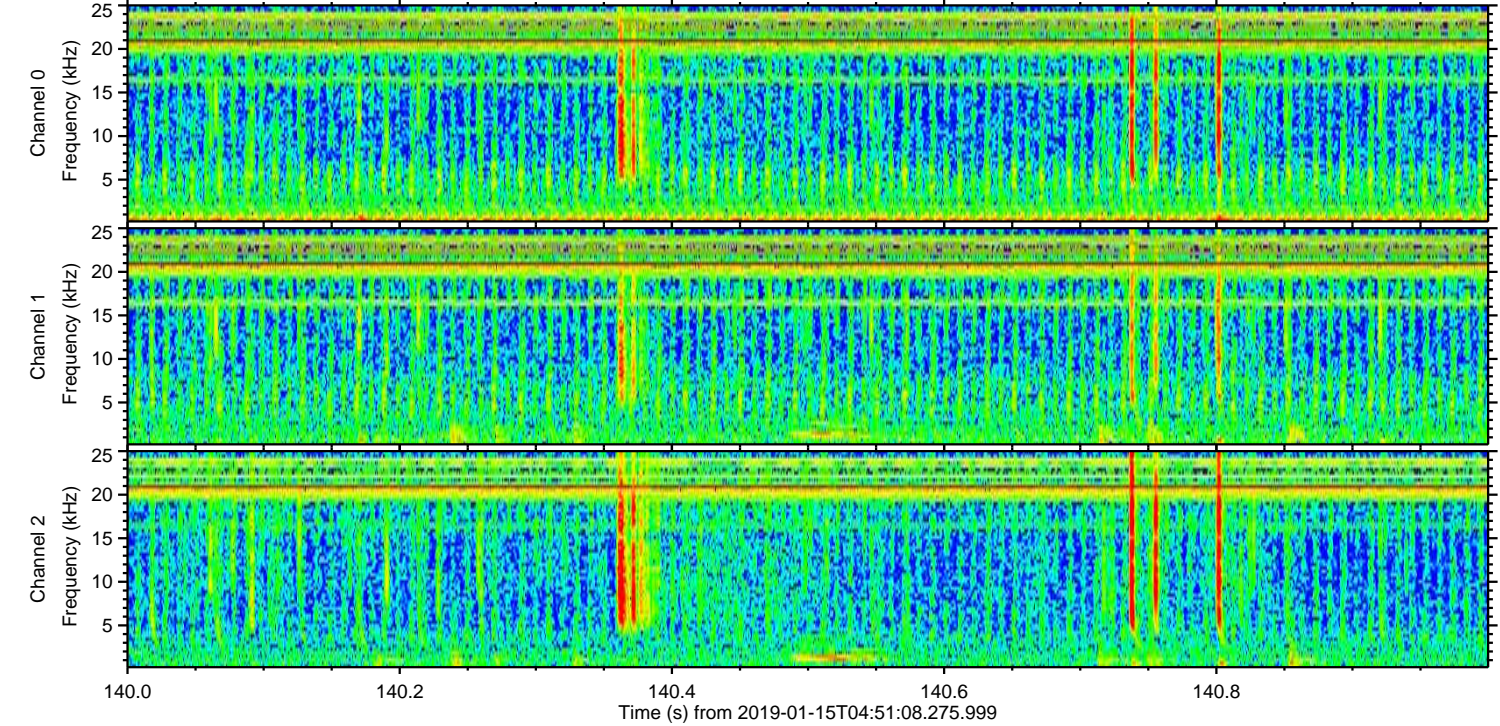
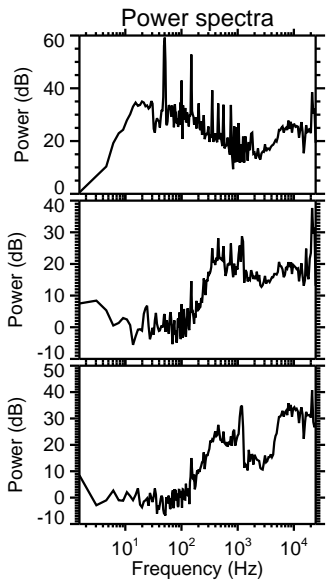
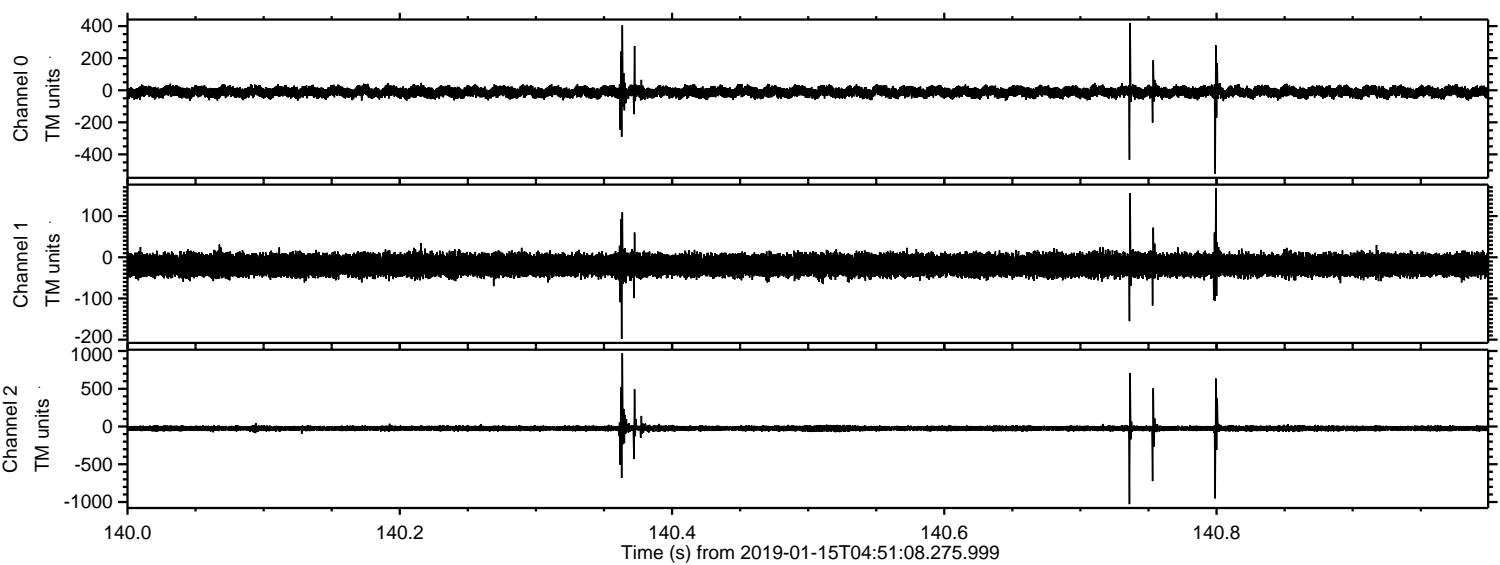


Processed Tue Jan 15 05:59:03 2019 by ELM ver.2012-10-06 from 001__elm20190115_045107__dat00.bin

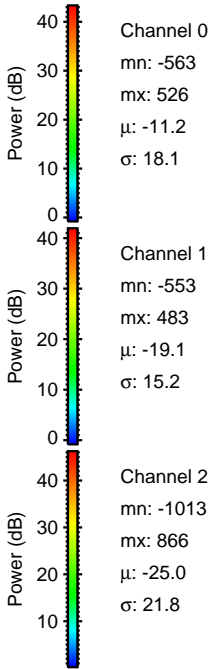
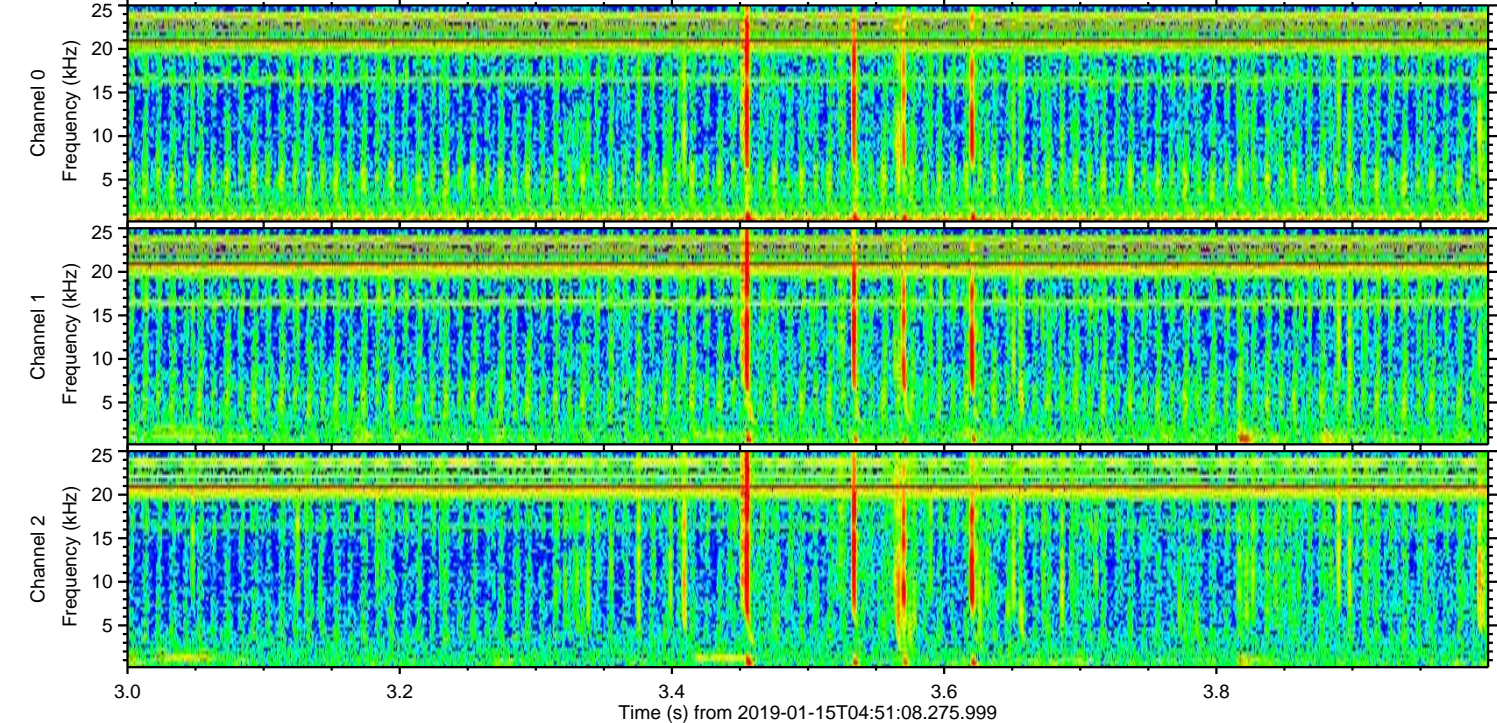
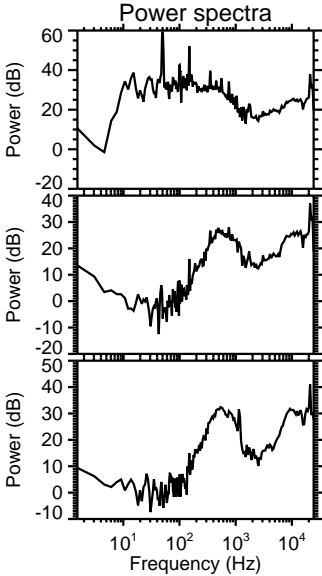
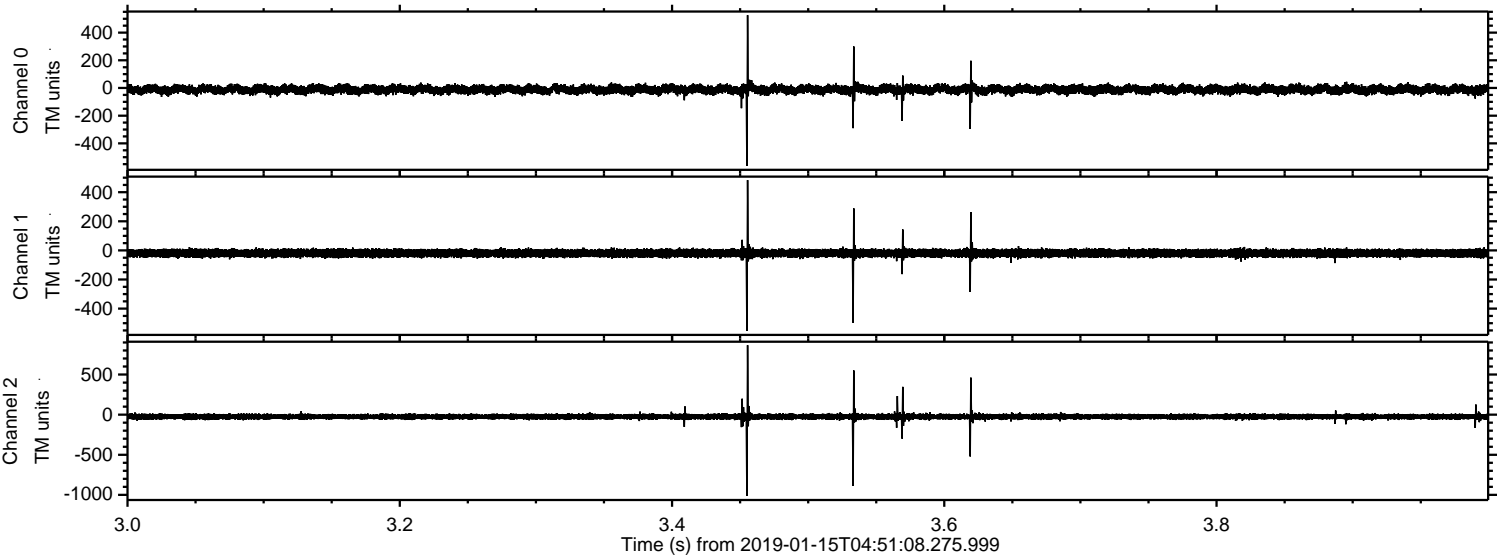


ELMAVAN 3D WAVEFORMS (Measured data sampled at 50 kHz) 51000 packets of 144 samples from 2019-01-15T04:51:08.275.999. Part 141/147

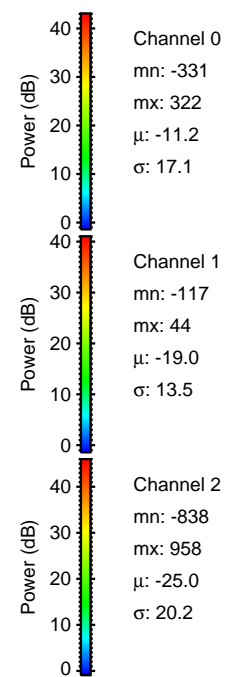
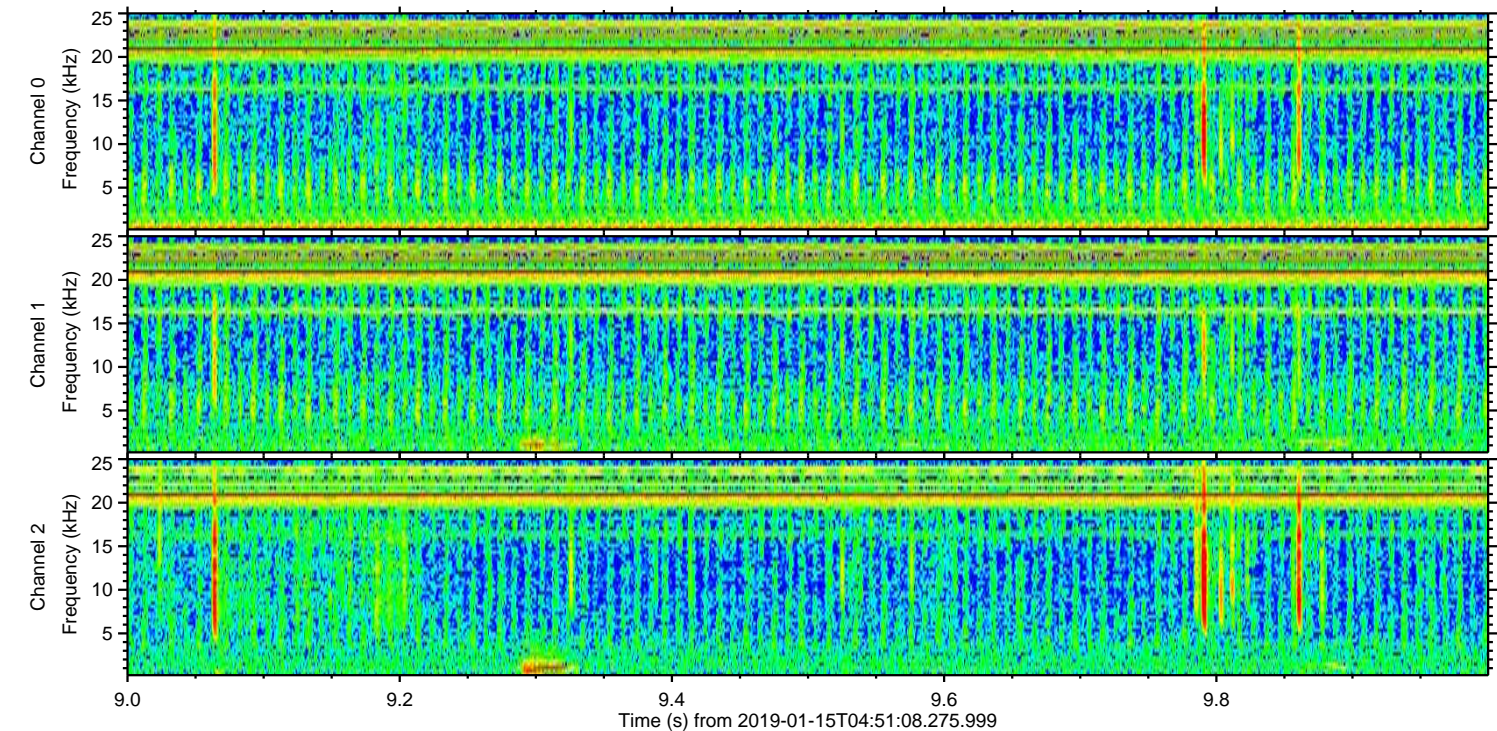
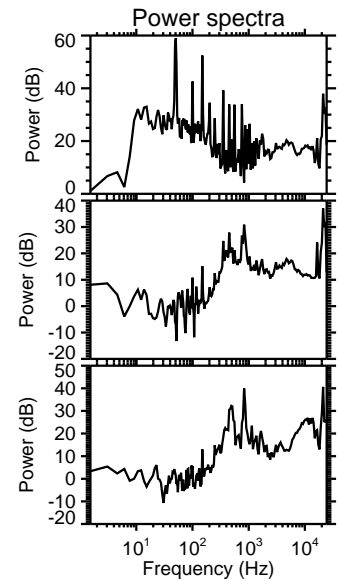
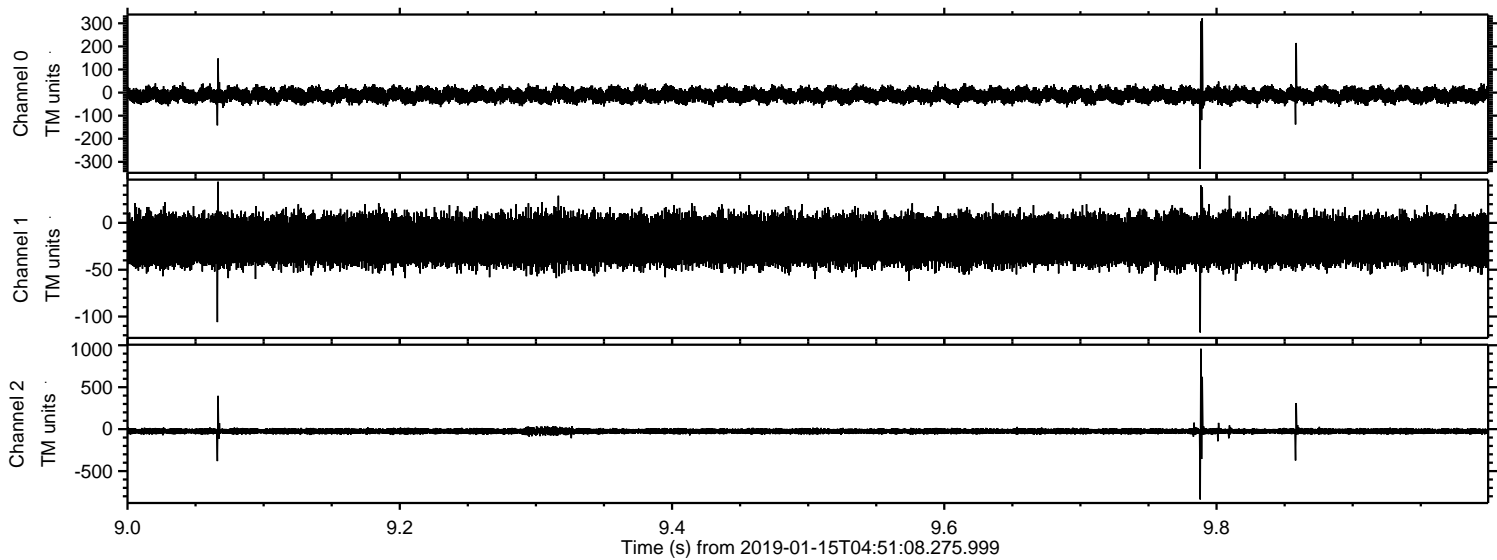
Processed Tue Jan 15 05:59:03 2019 by ELM ver.2012-10-06 from 001__elm20190115_045107__dat00.bin



Processed Tue Jan 15 05:59:04 2019 by ELM ver.2012-10-06 from 001__elm20190115_045107__dat00.bin



Processed Tue Jan 15 05:59:05 2019 by ELM ver.2012-10-06 from 001__elm20190115_045107__dat00.bin



Channel 0
mn: -331
mx: 322
 μ : -11.2
 σ : 17.1

Channel 1
mn: -117
mx: 44
 μ : -19.0
 σ : 13.5

Channel 2
mn: -838
mx: 958
 μ : -25.0
 σ : 20.2

Processed Tue Jan 15 05:59:06 2019 by ELM ver.2012-10-06 from 001__elm20190115_045107__dat00.bin

