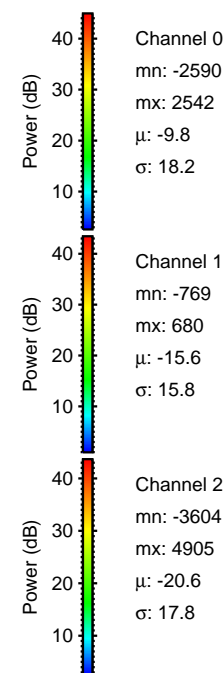
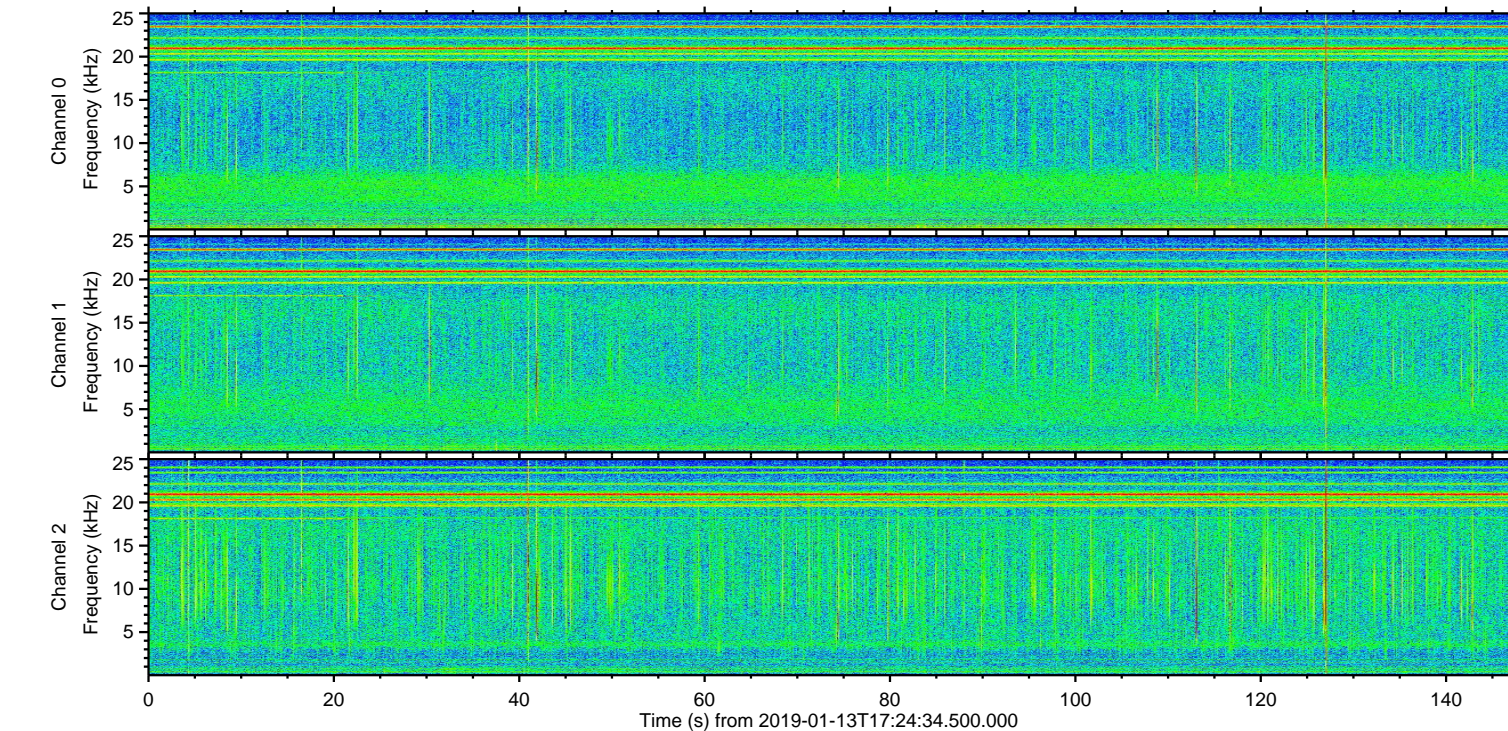
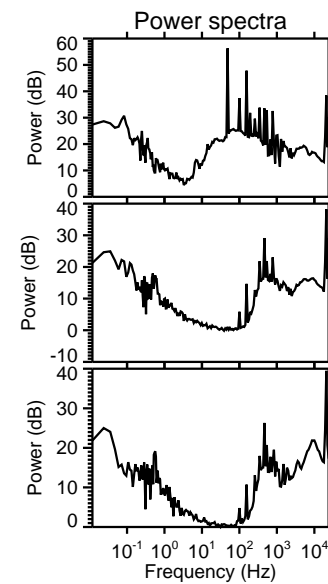
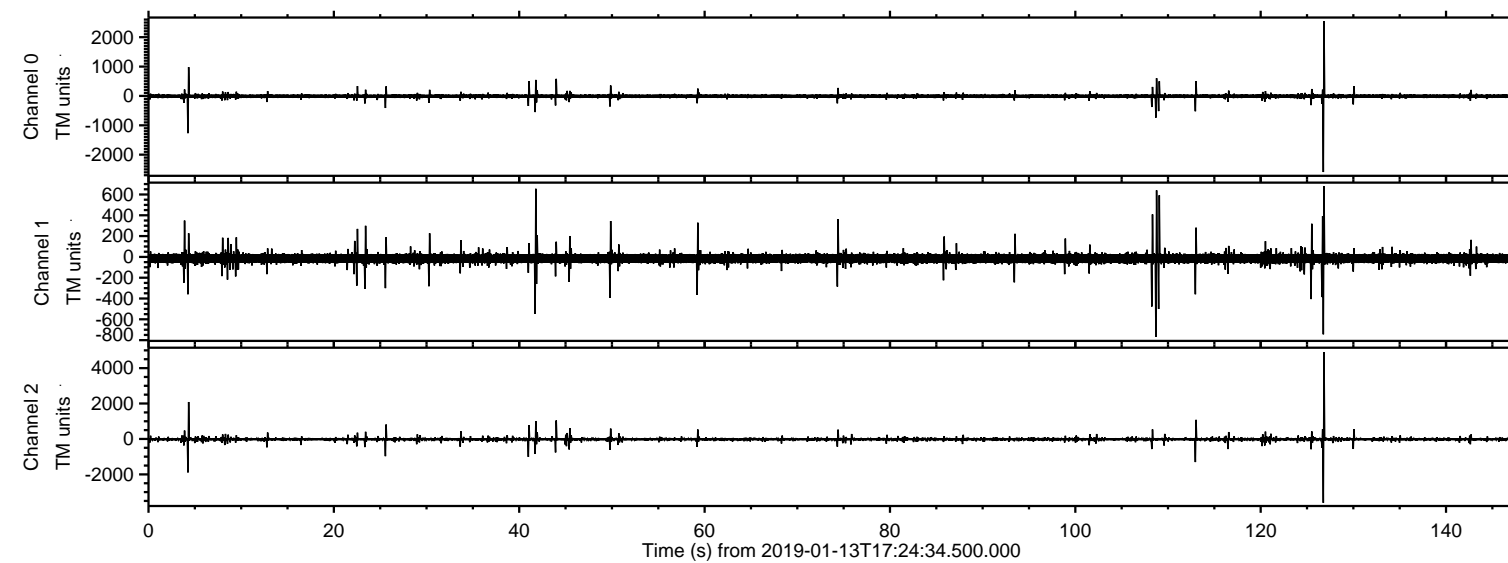


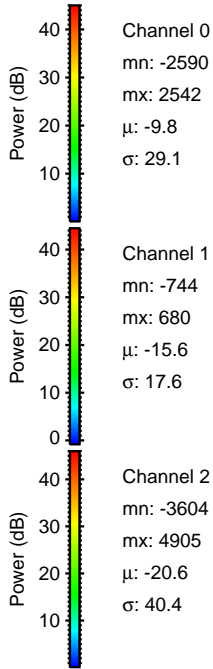
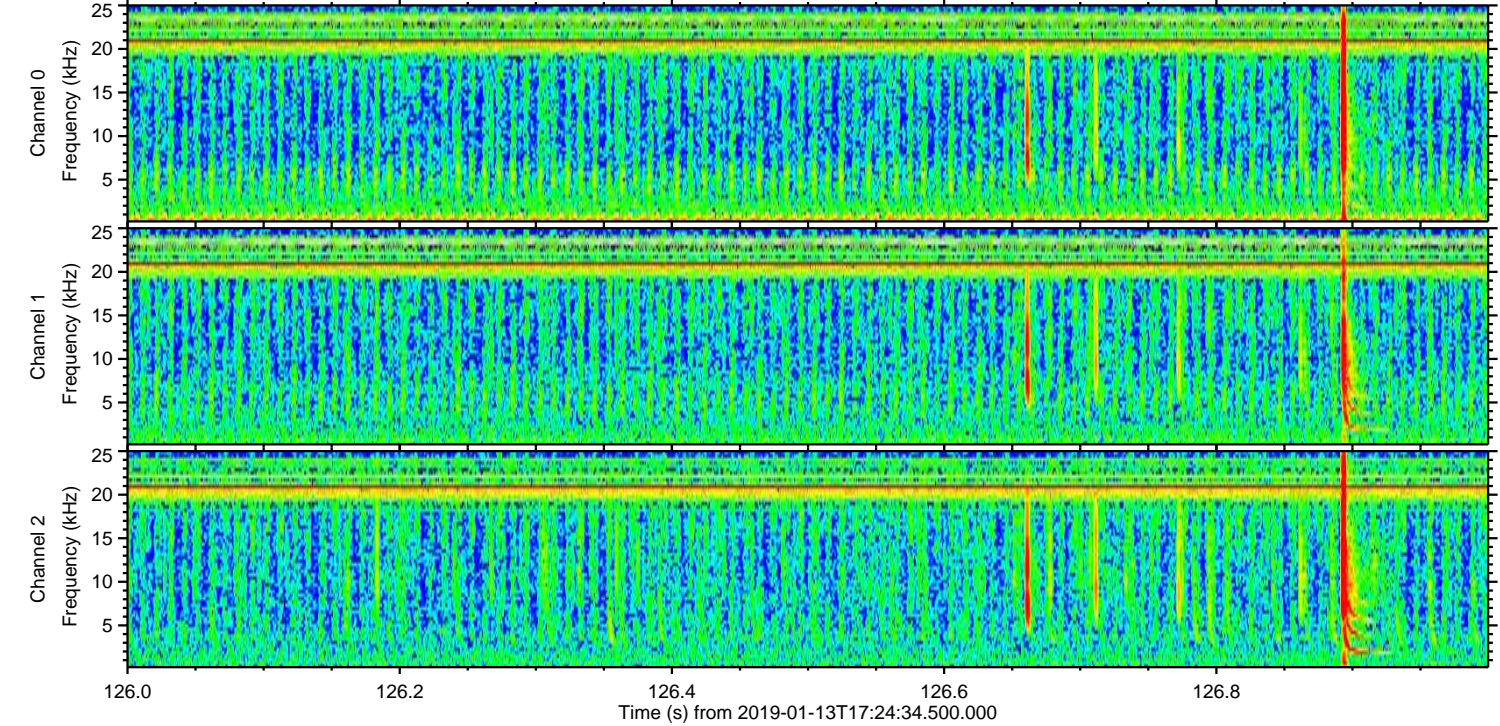
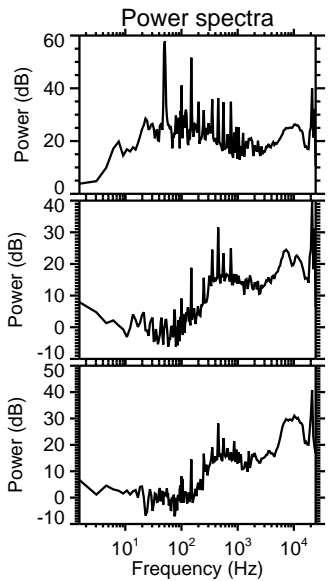
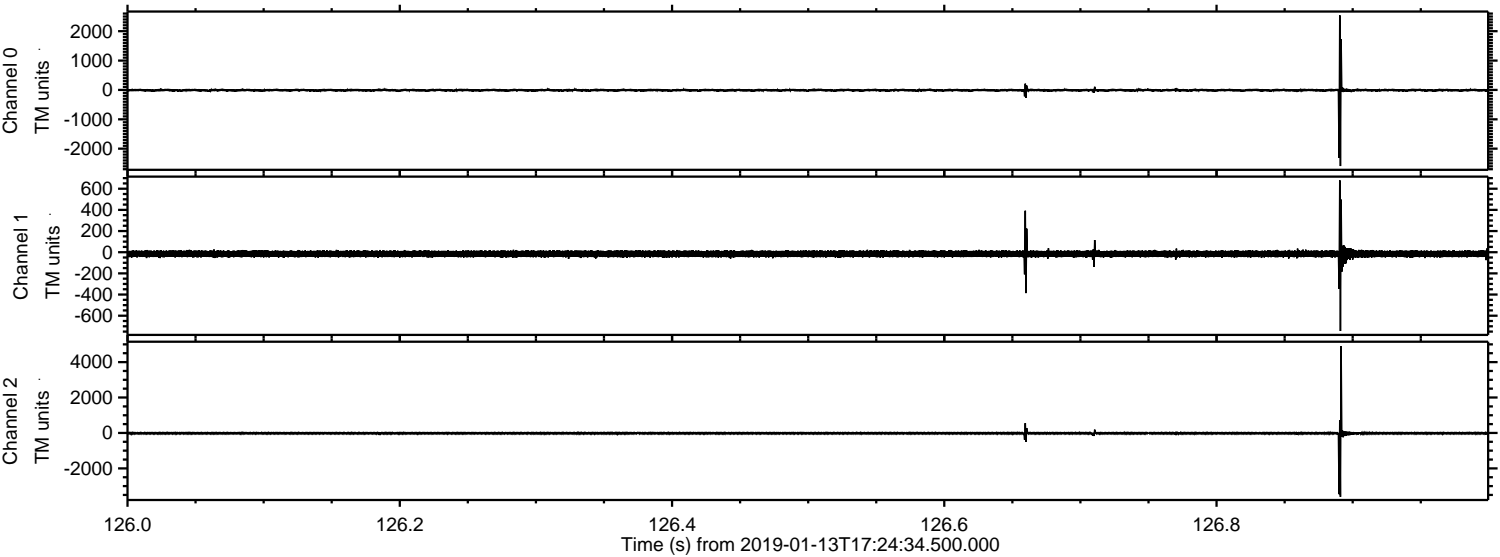
ELMAVAN 3D WAVEFORMS (Measured data sampled at 50 kHz) 51000 packets of 144 samples from 2019-01-13T17:24:34.500.000.

Processed Sun Jan 13 18:32:16 2019 by ELM ver.2012-10-06 from 001__elm20190113_172433__dat00.bin

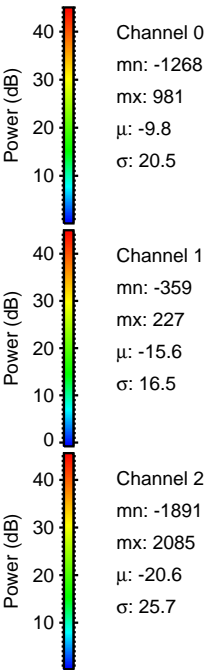
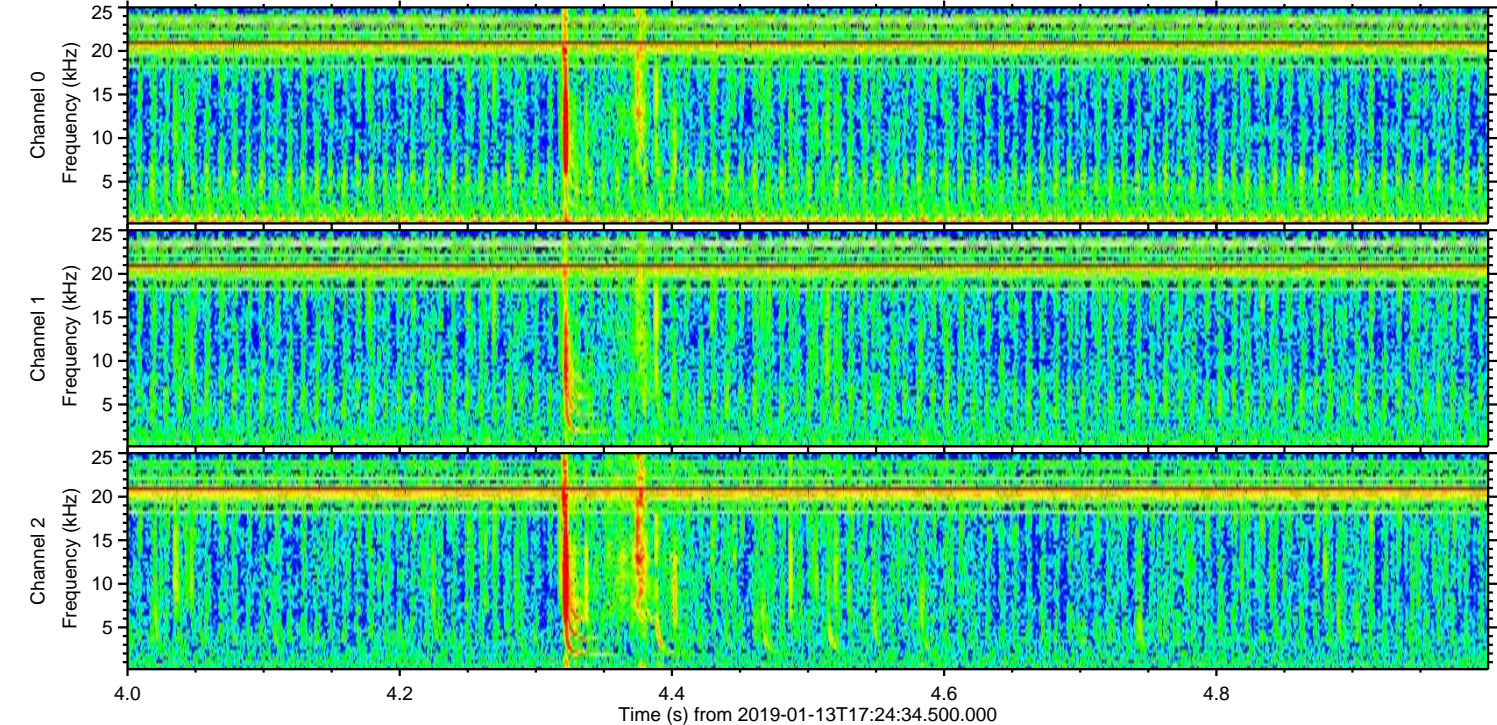
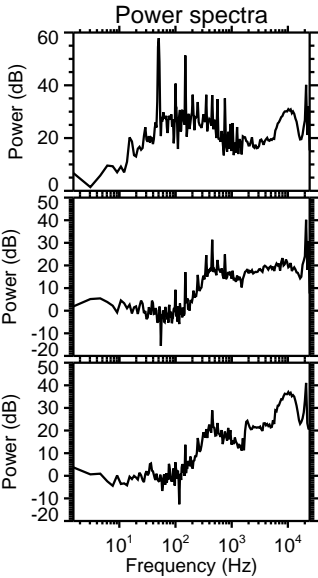
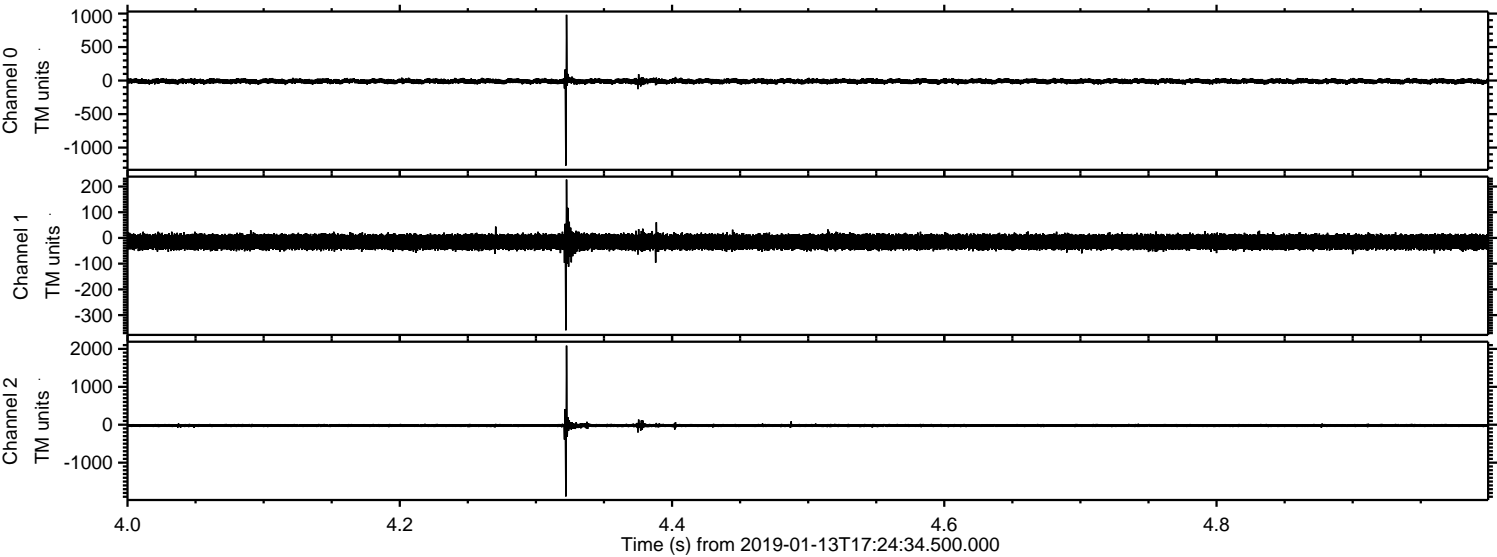


ELMAVAN 3D WAVEFORMS (Measured data sampled at 50 kHz) 51000 packets of 144 samples from 2019-01-13T17:24:34.500.000. Part 127/147

Processed Sun Jan 13 18:32:22 2019 by ELM ver.2012-10-06 from 001__elm20190113_172433__dat00.bin

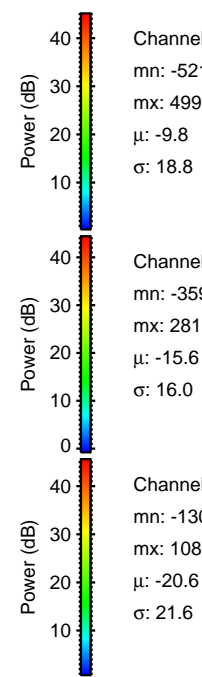
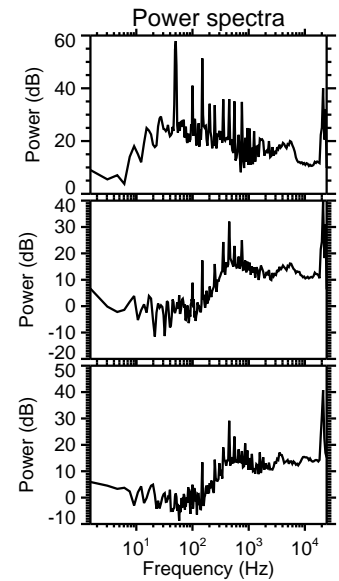
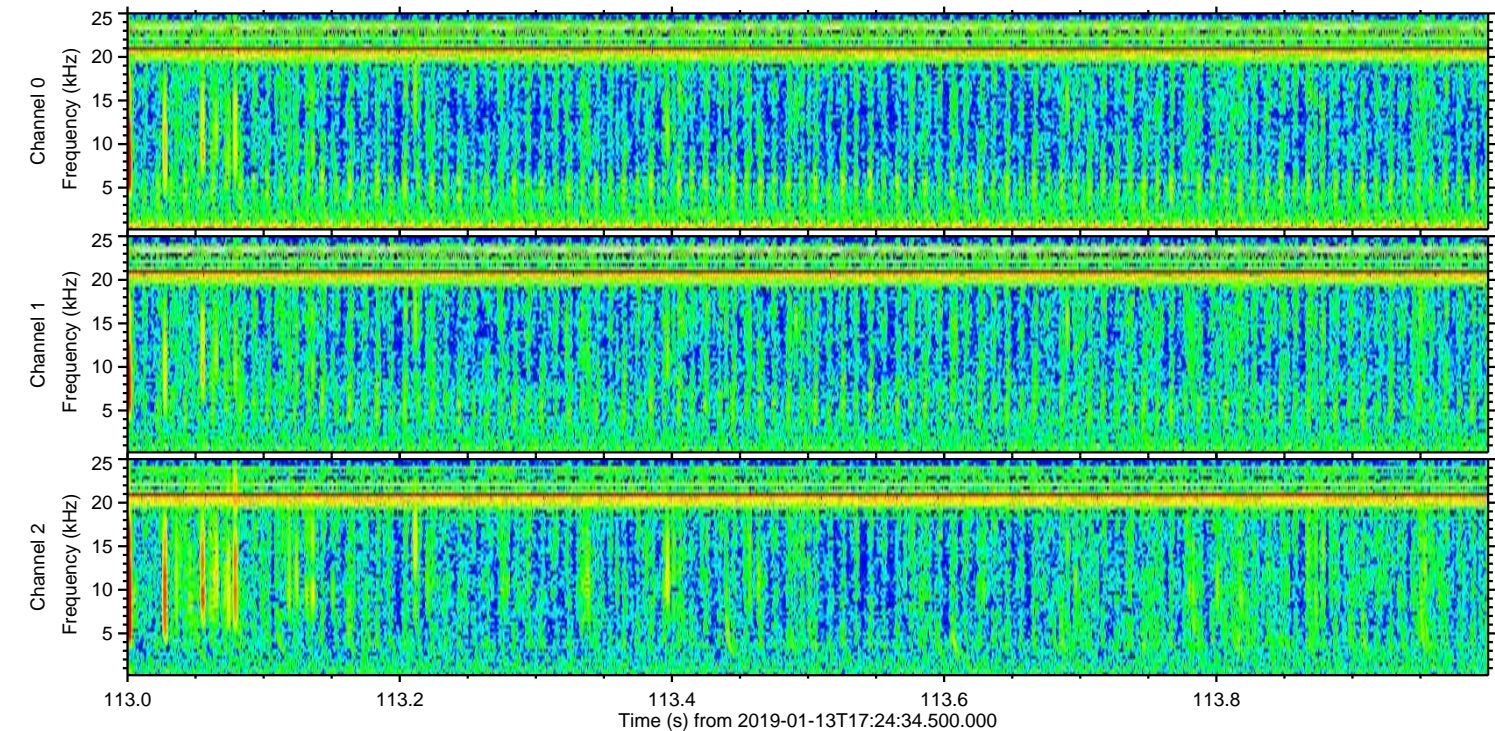
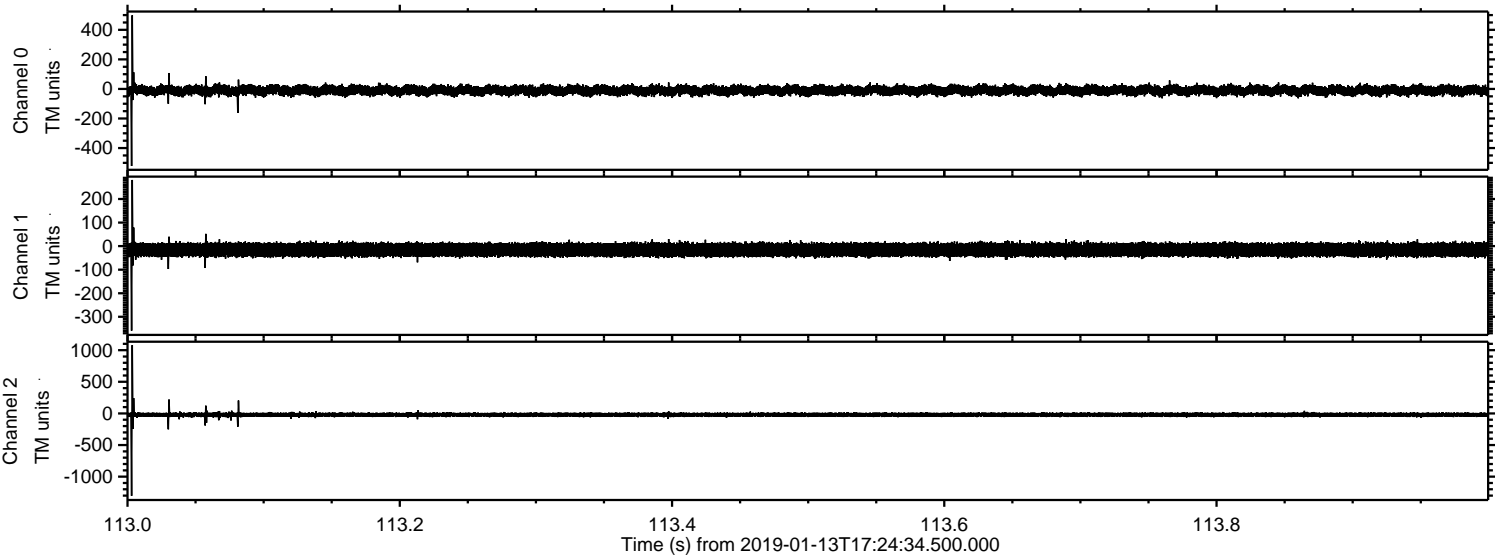


Processed Sun Jan 13 18:32:23 2019 by ELM ver.2012-10-06 from 001__elm20190113_172433__dat00.bin

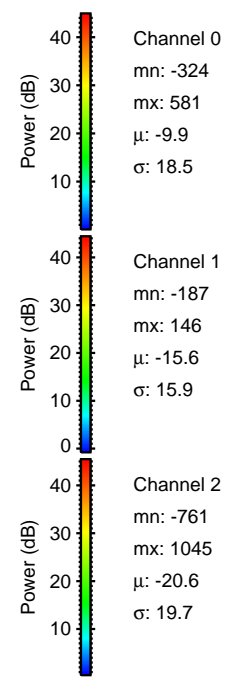
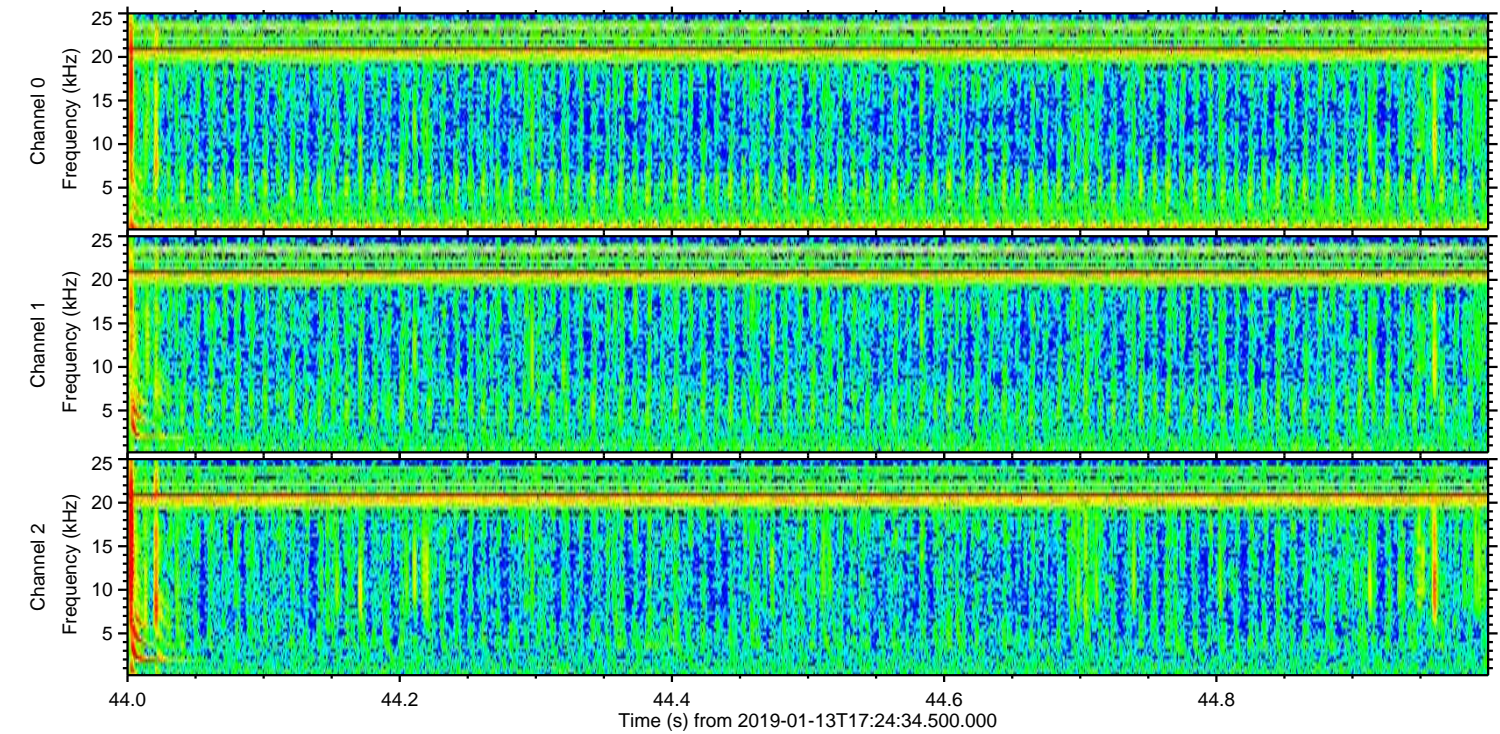
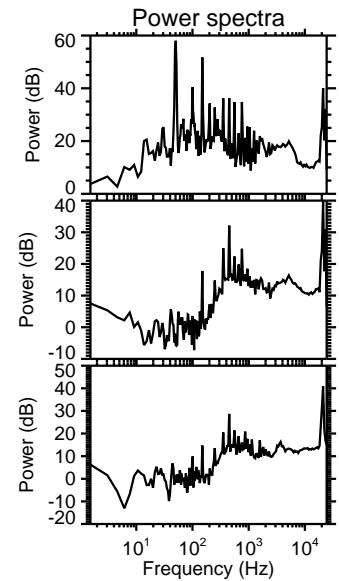
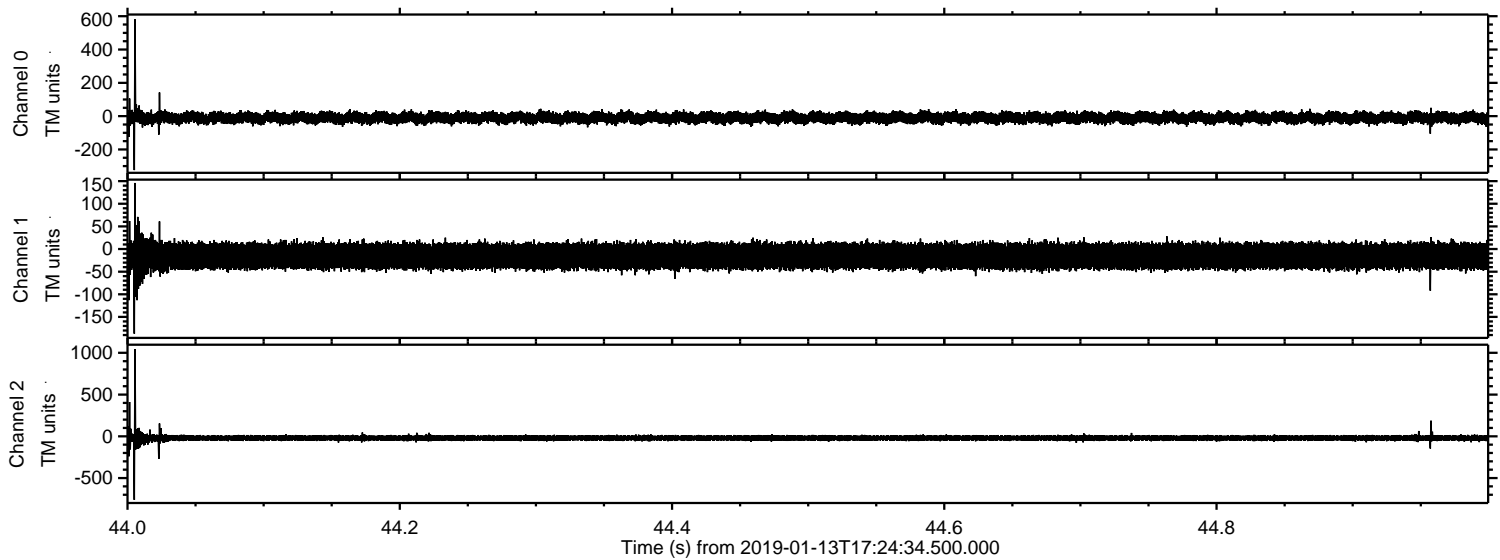


ELMAVAN 3D WAVEFORMS (Measured data sampled at 50 kHz) 51000 packets of 144 samples from 2019-01-13T17:24:34.500.000. Part 114/147

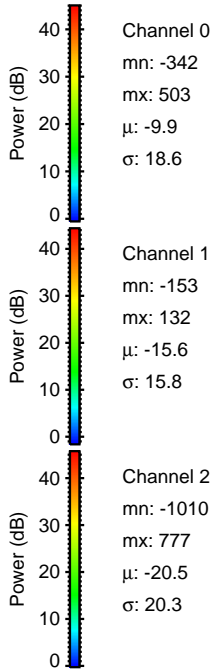
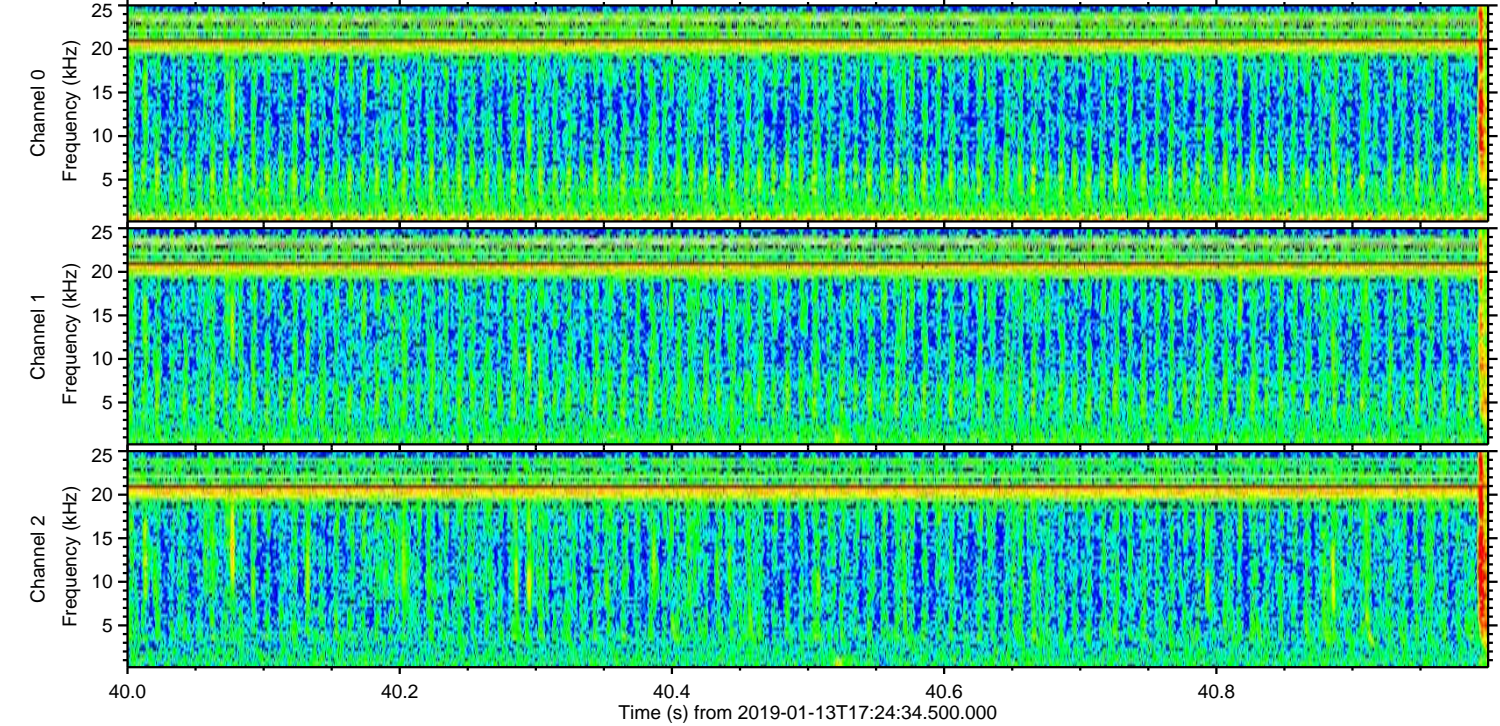
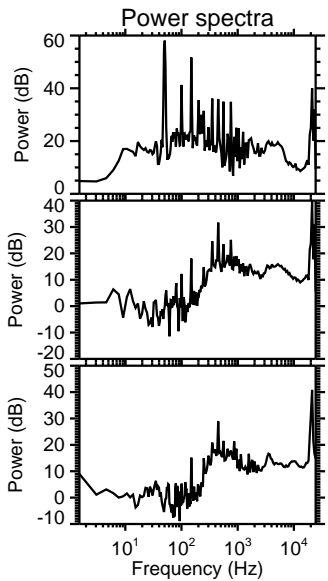
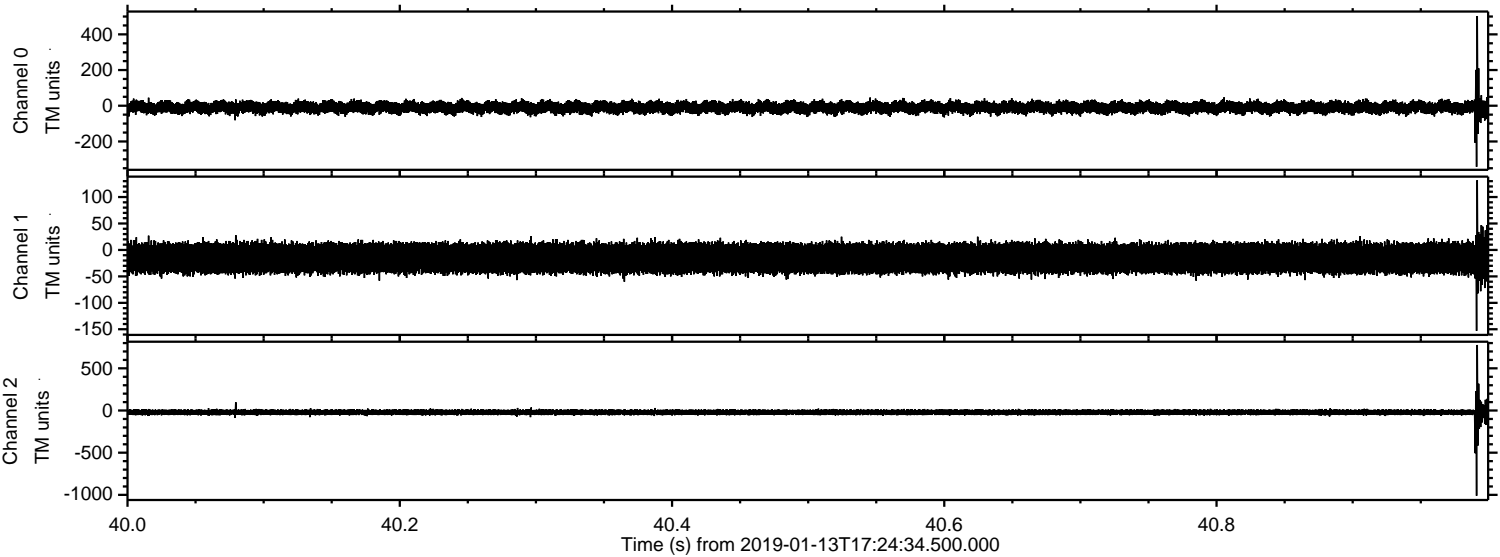
Processed Sun Jan 13 18:32:23 2019 by ELM ver.2012-10-06 from 001__elm20190113_172433__dat00.bin



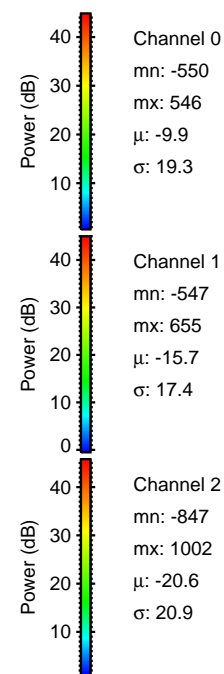
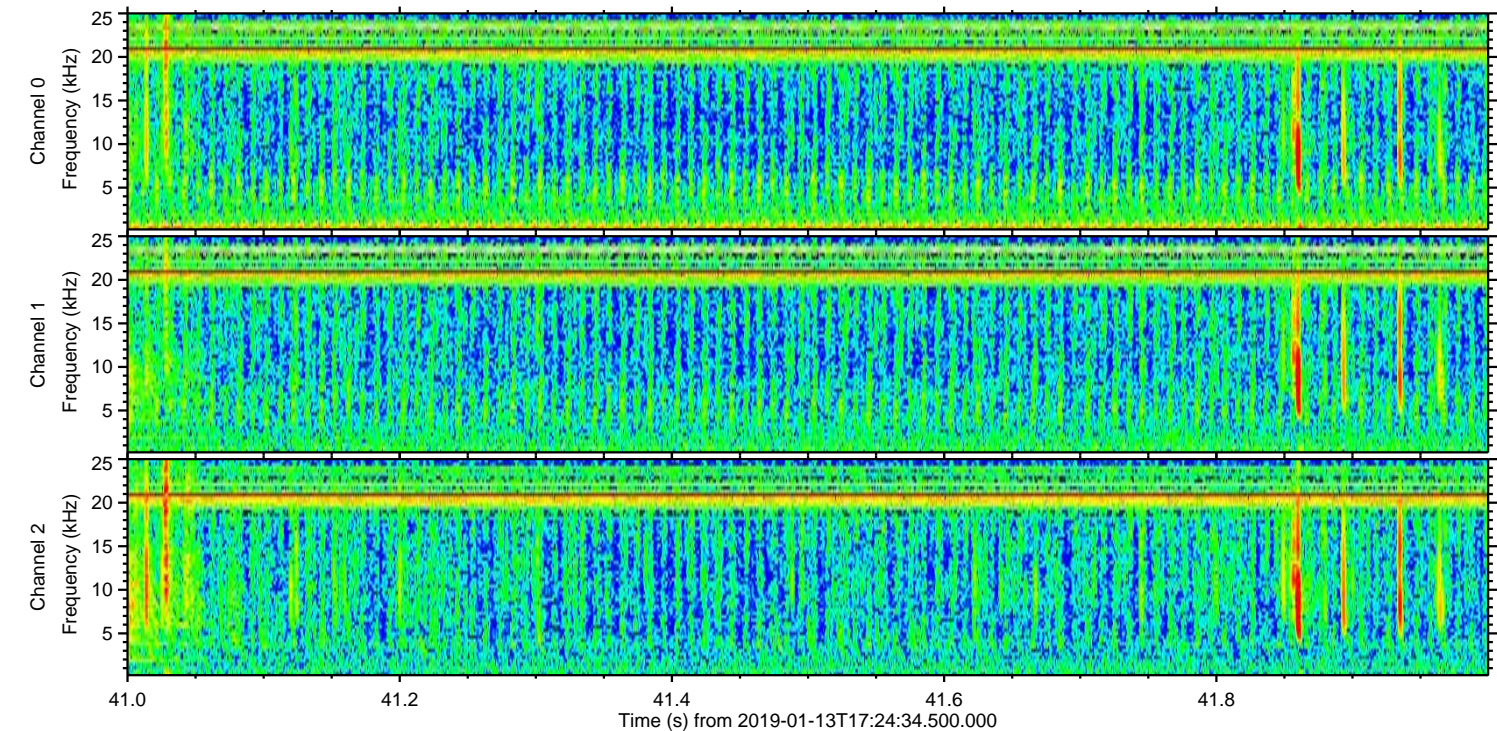
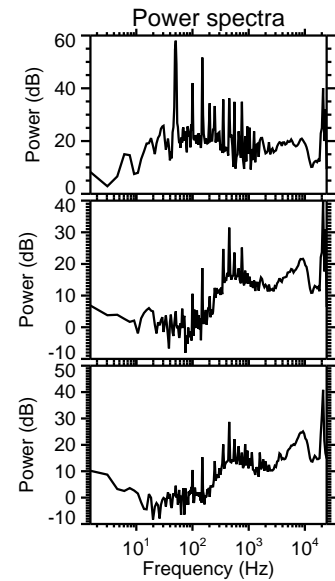
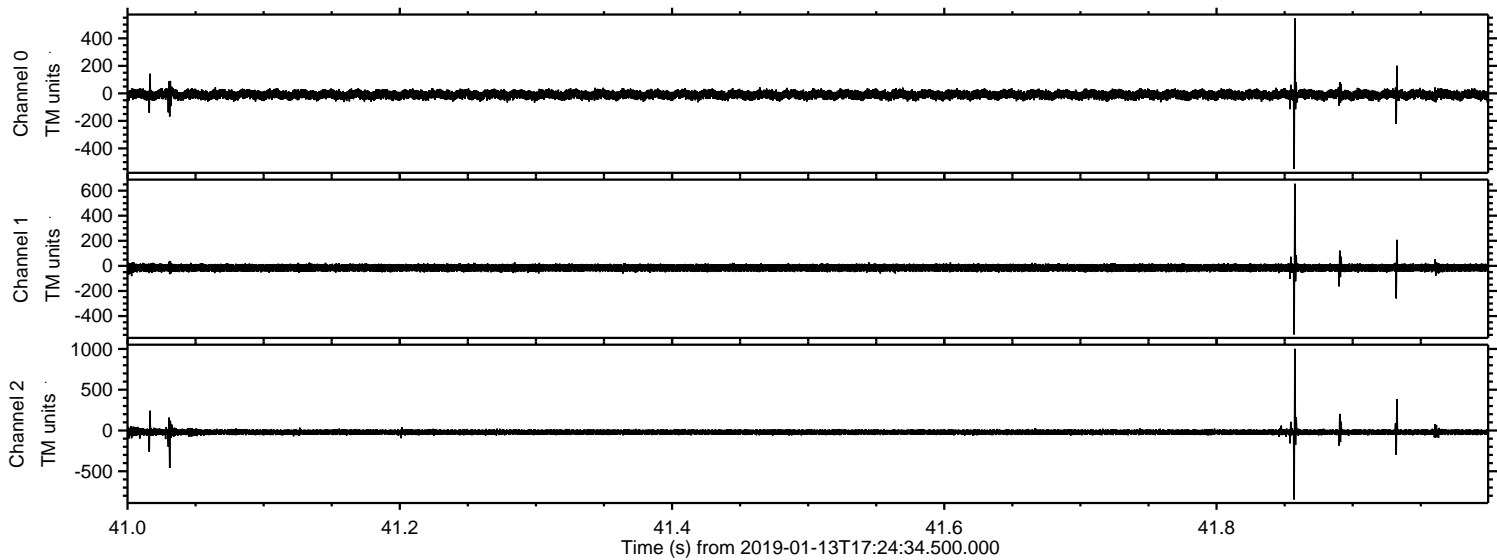
Processed Sun Jan 13 18:32:24 2019 by ELM ver.2012-10-06 from 001__elm20190113_172433__dat00.bin



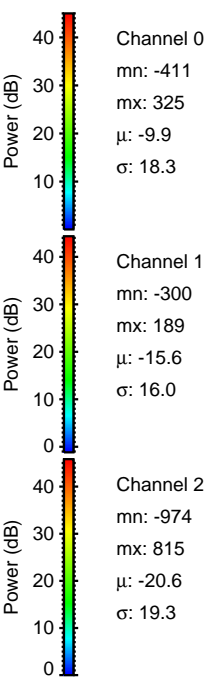
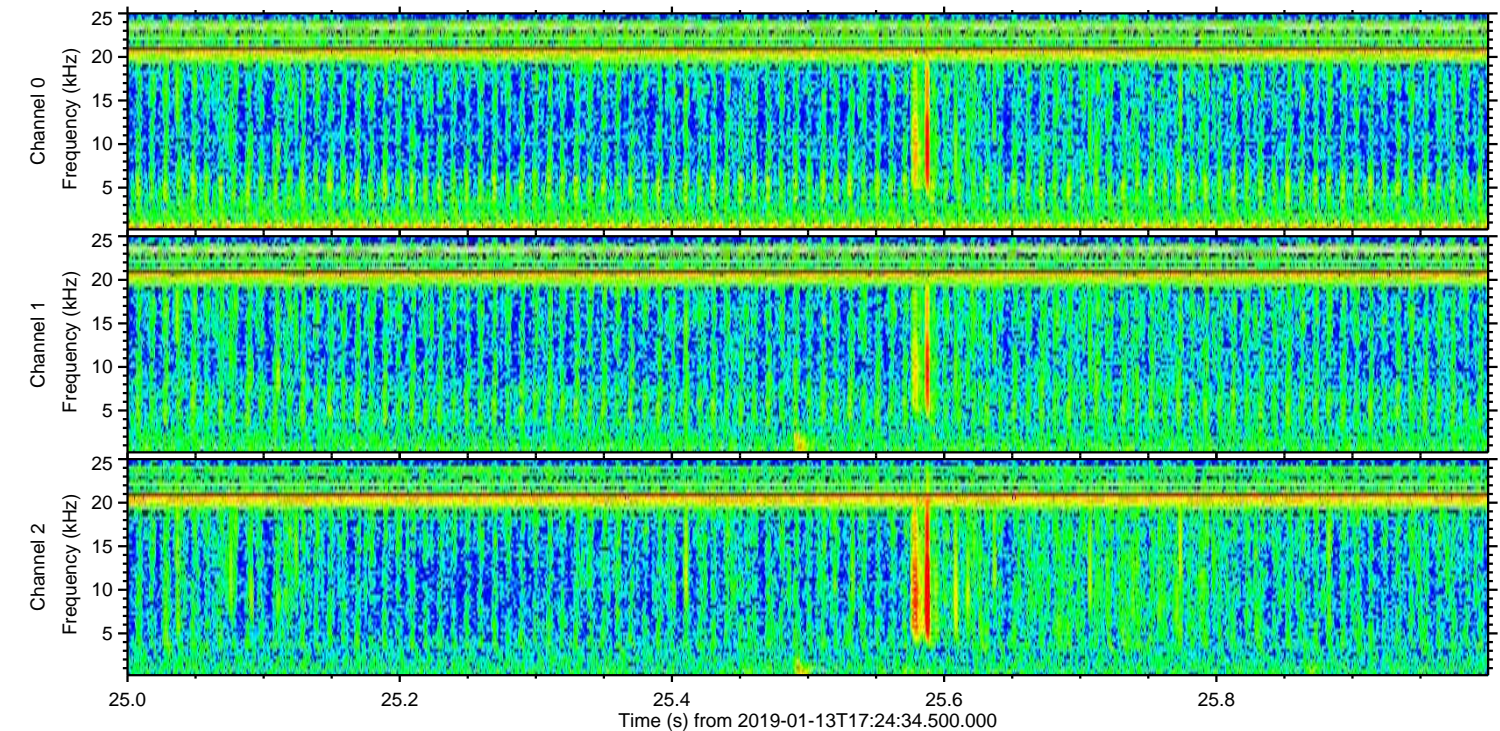
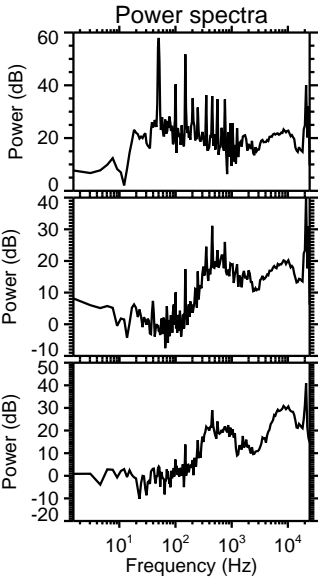
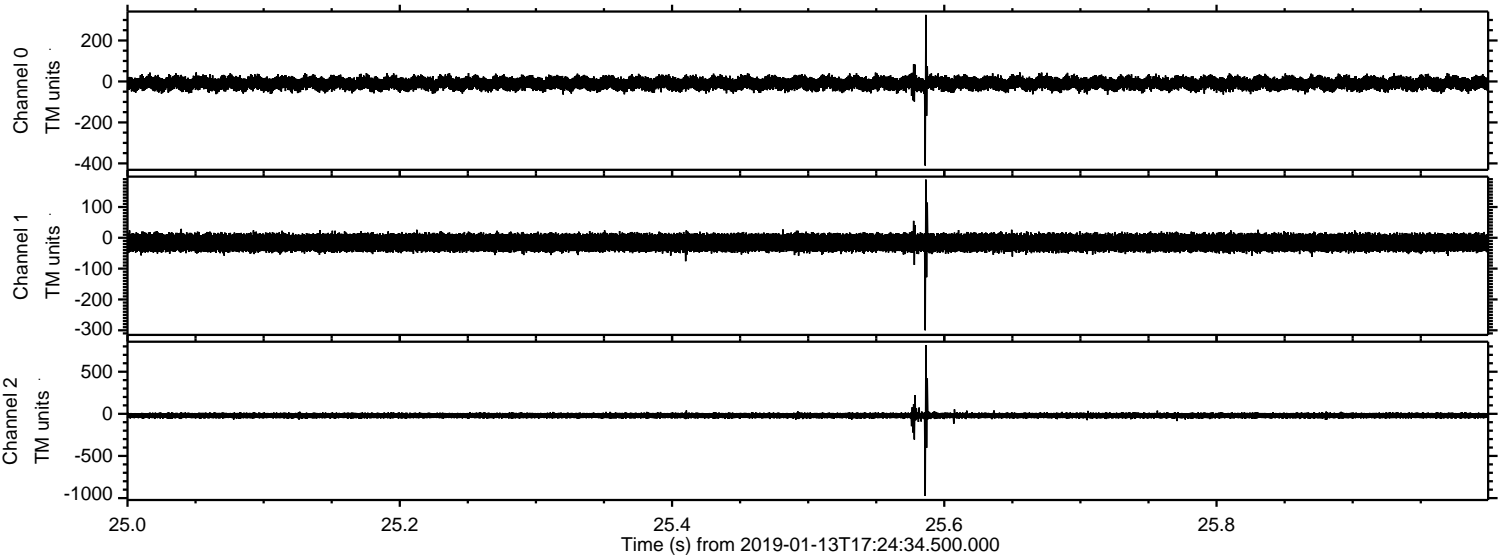
Processed Sun Jan 13 18:32:24 2019 by ELM ver.2012-10-06 from 001__elm20190113_172433__dat00.bin



Processed Sun Jan 13 18:32:25 2019 by ELM ver.2012-10-06 from 001__elm20190113_172433__dat00.bin

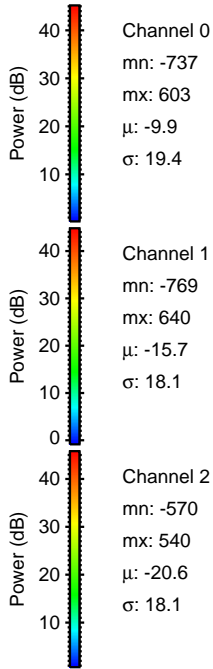
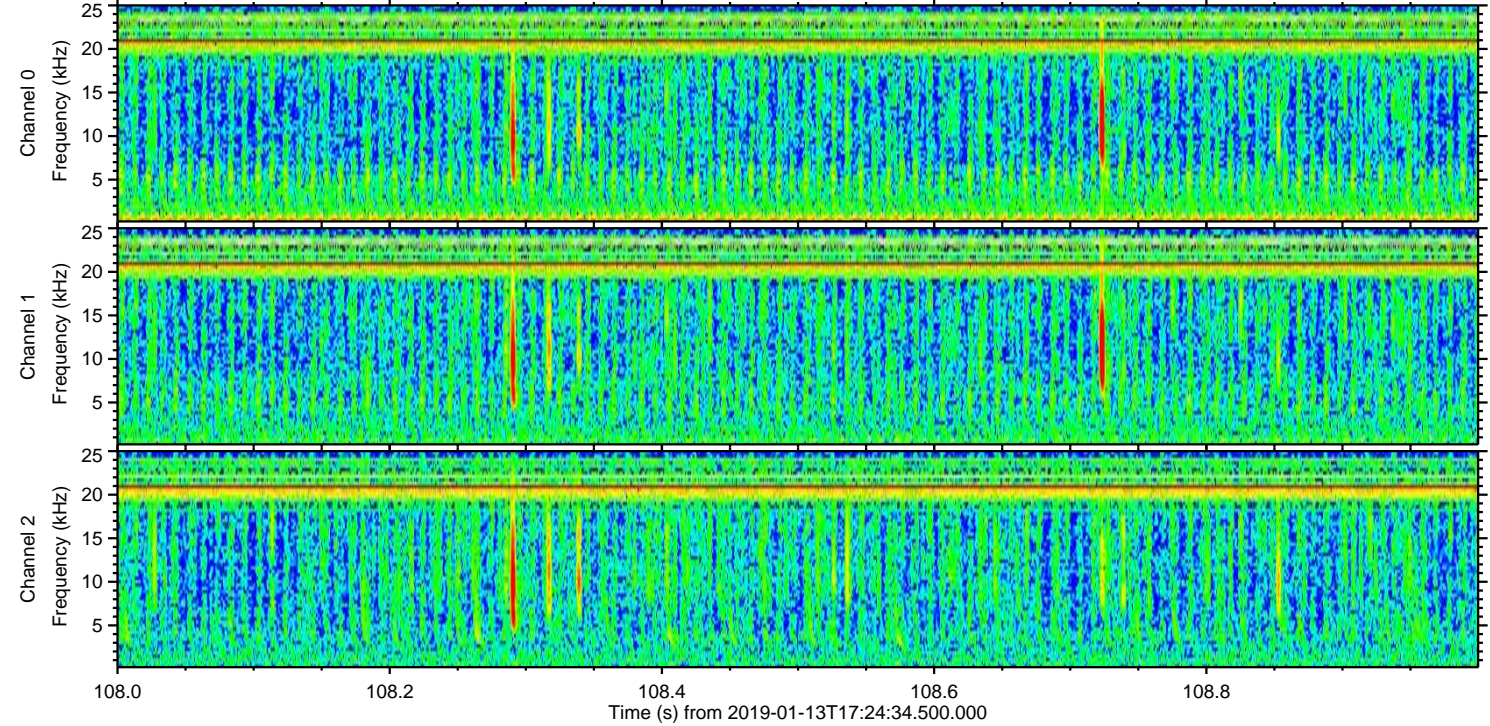
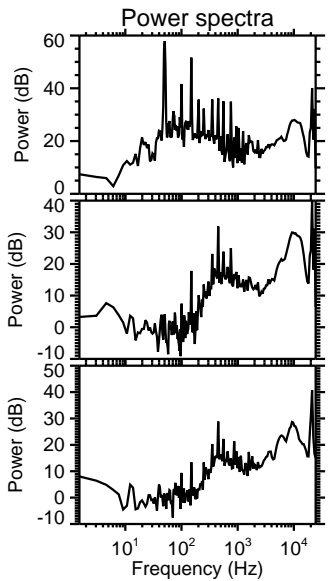
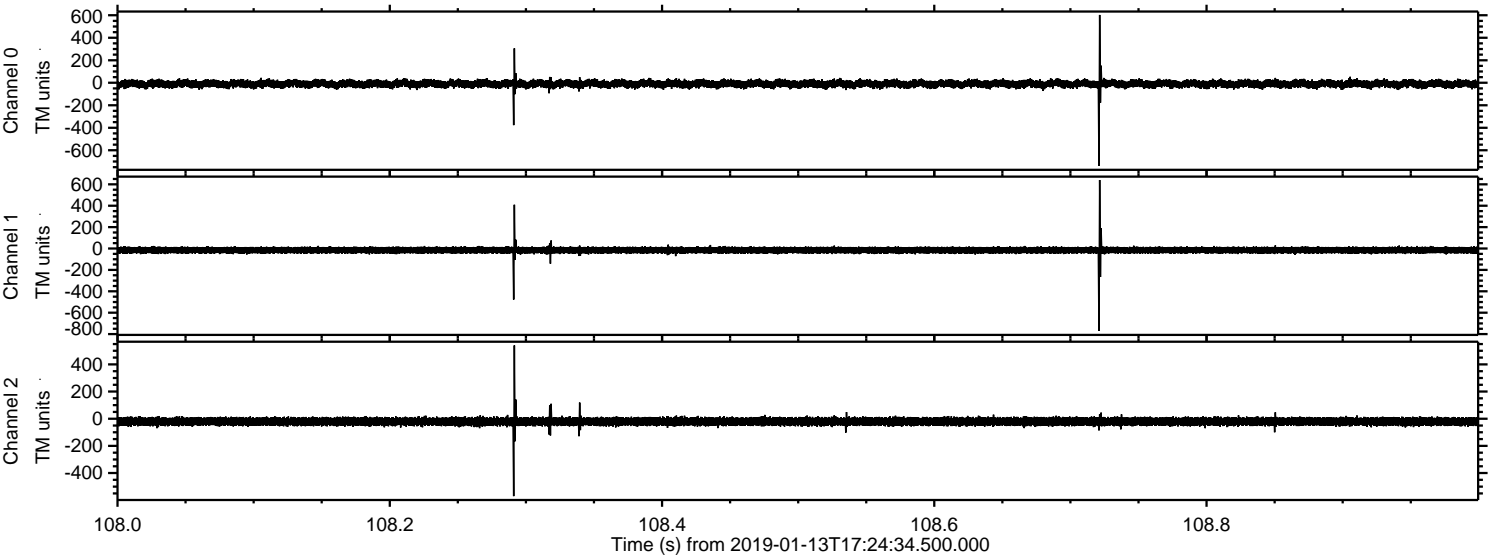


Processed Sun Jan 13 18:32:26 2019 by ELM ver.2012-10-06 from 001__elm20190113_172433__dat00.bin

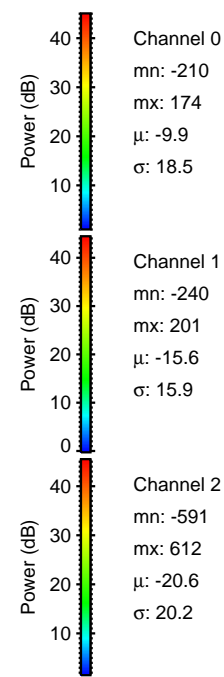
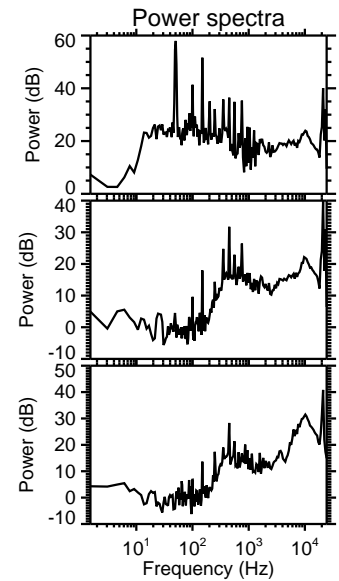
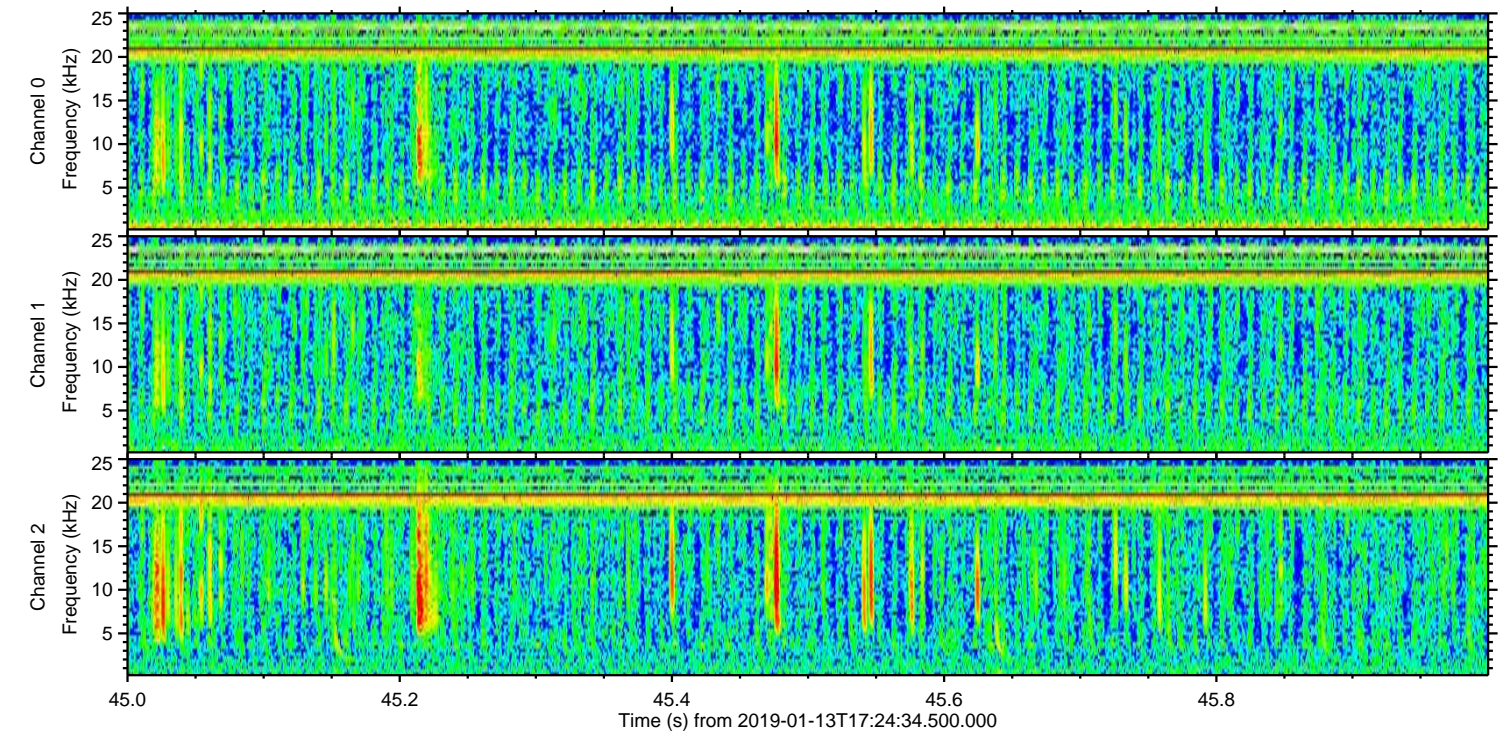
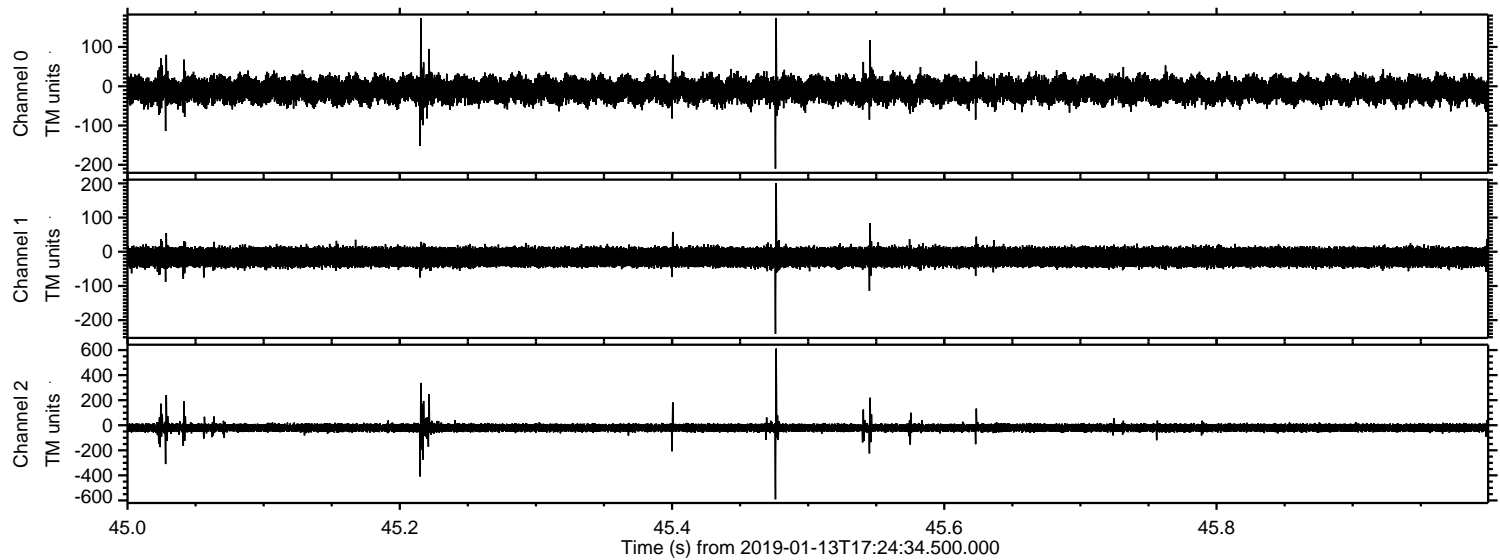


ELMAVAN 3D WAVEFORMS (Measured data sampled at 50 kHz) 51000 packets of 144 samples from 2019-01-13T17:24:34.500.000. Part 109/147

Processed Sun Jan 13 18:32:26 2019 by ELM ver.2012-10-06 from 001__elm20190113_172433__dat00.bin



Processed Sun Jan 13 18:32:27 2019 by ELM ver.2012-10-06 from 001__elm20190113_172433__dat00.bin



Channel 0
mn: -210
mx: 174
 μ : -9.9
 σ : 18.5

Channel 1
mn: -240
mx: 201
 μ : -15.6
 σ : 15.9

Channel 2
mn: -591
mx: 612
 μ : -20.6
 σ : 20.2

Processed Sun Jan 13 18:32:28 2019 by ELM ver.2012-10-06 from 001__elm20190113_172433__dat00.bin

