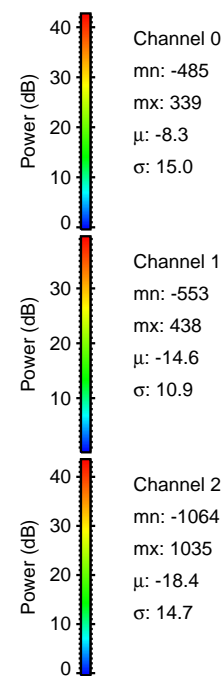
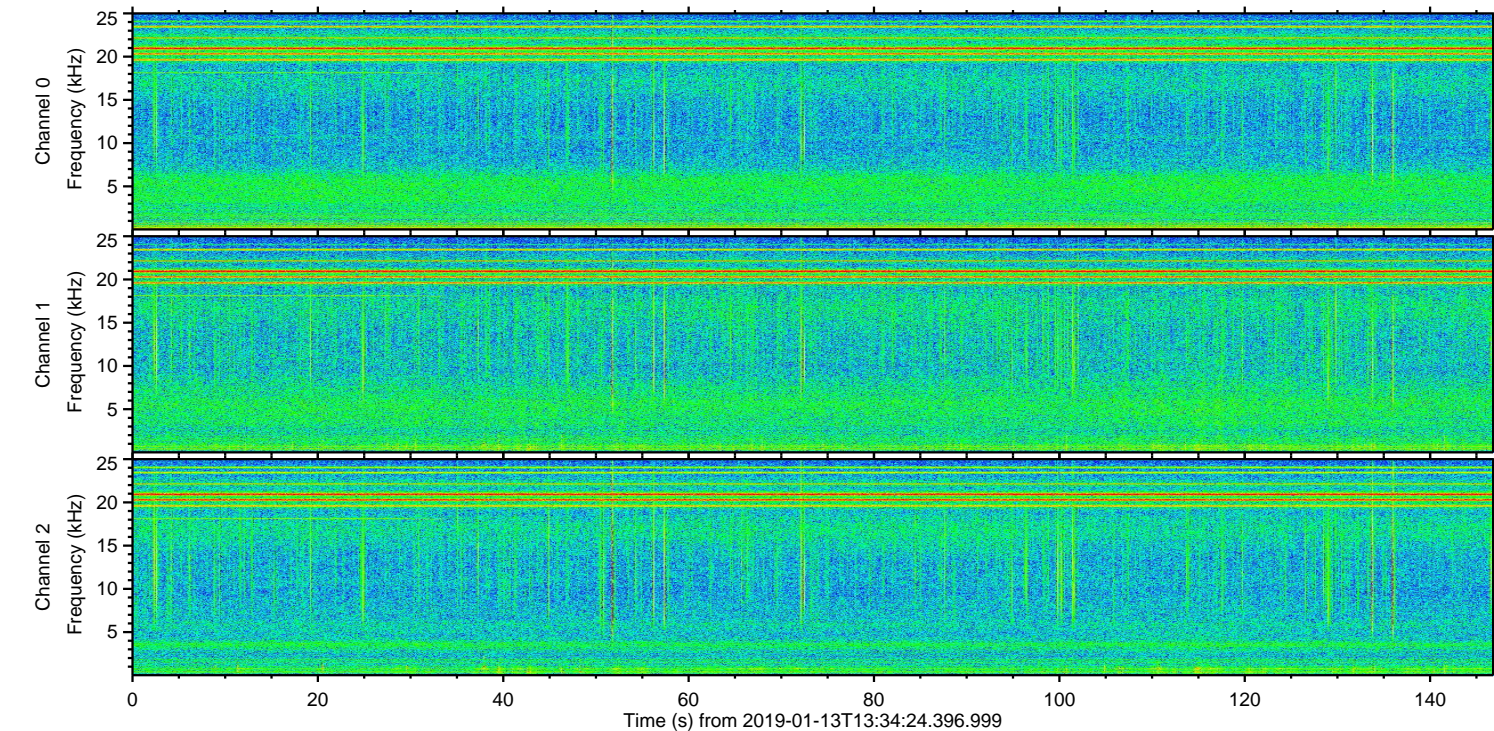
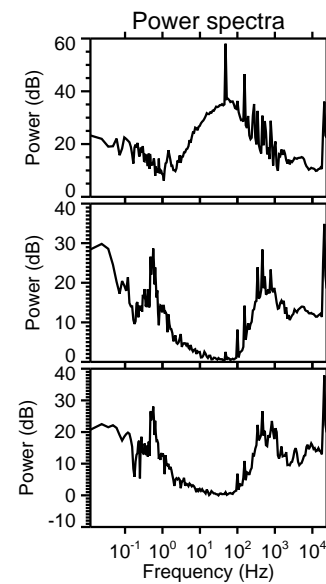
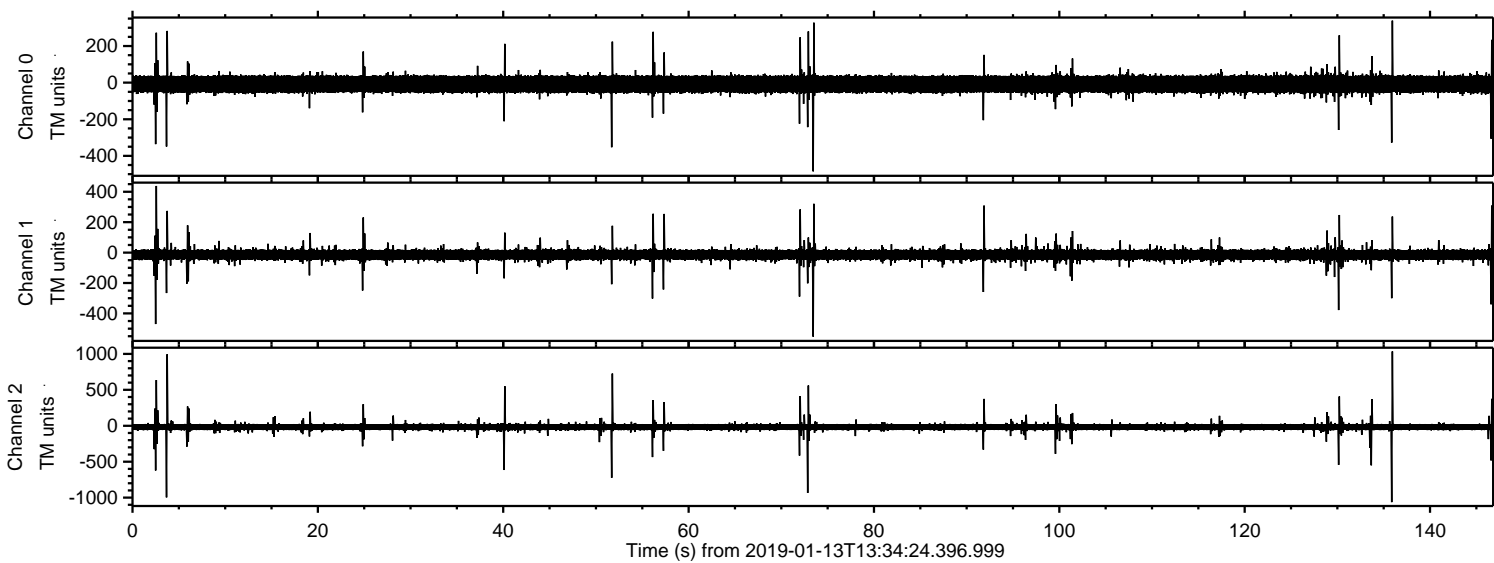


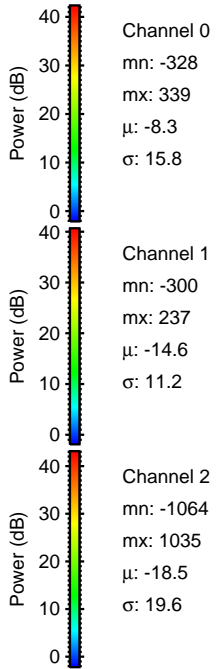
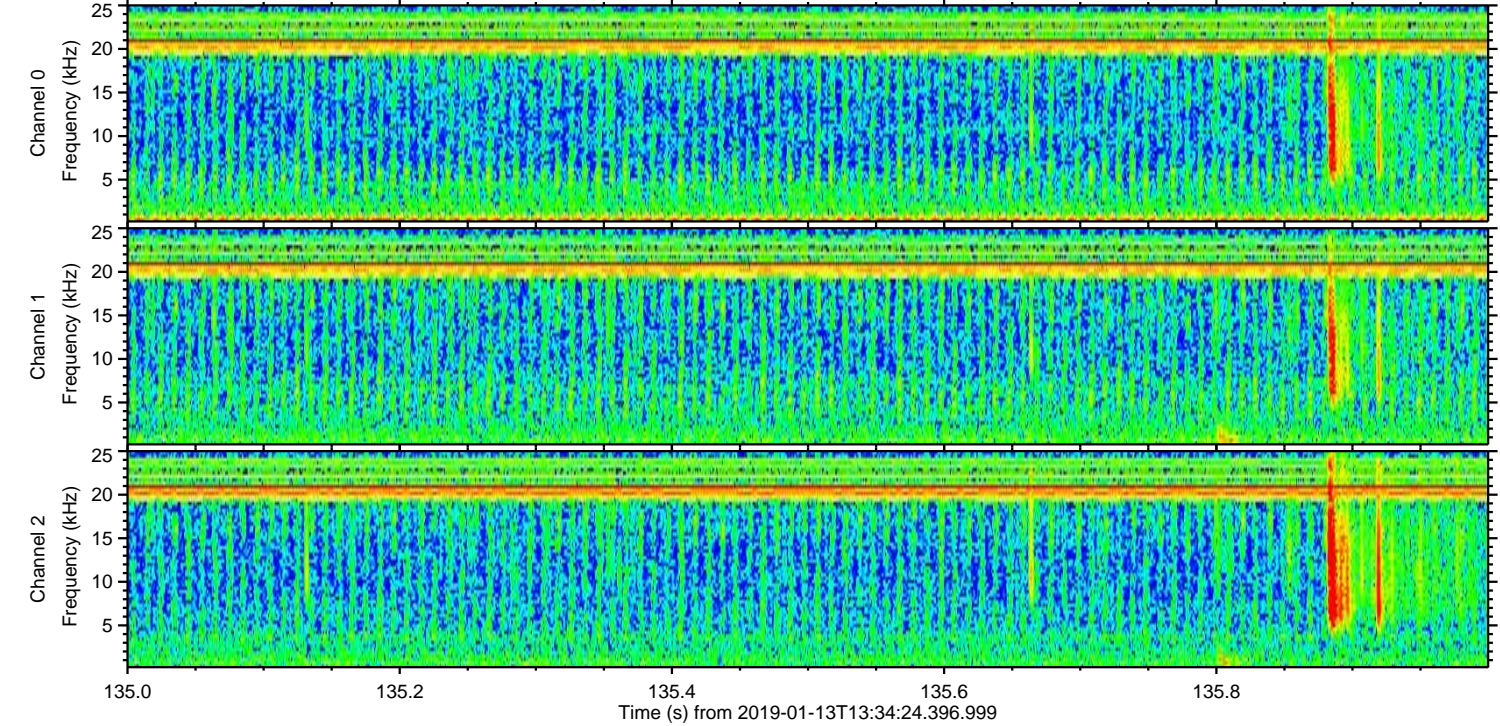
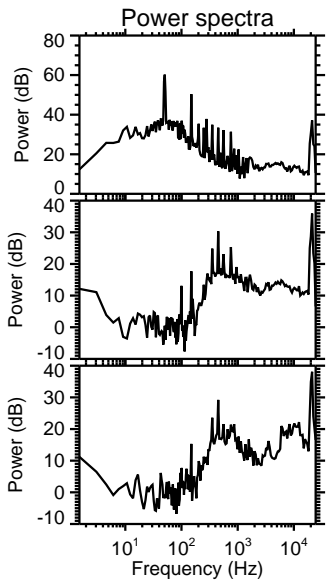
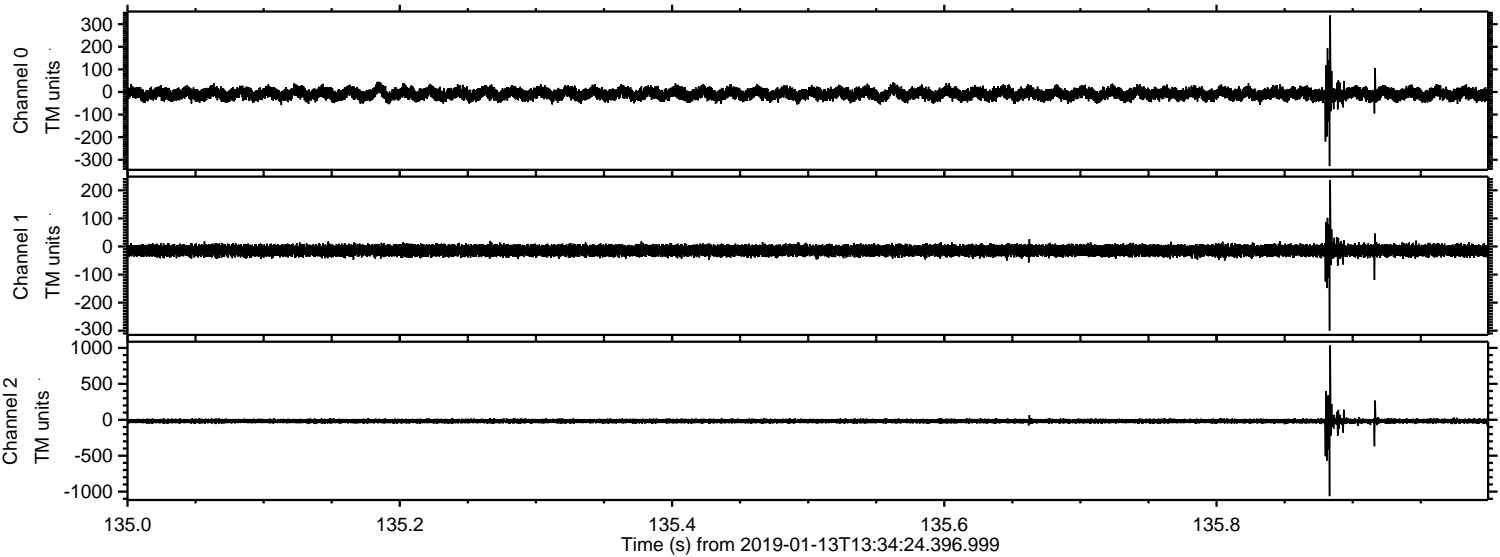
ELMAVAN 3D WAVEFORMS (Measured data sampled at 50 kHz) 51000 packets of 144 samples from 2019-01-13T13:34:24.396.999.

Processed Sun Jan 13 14:42:30 2019 by ELM ver.2012-10-06 from 001__elm20190113_133423__dat00.bin

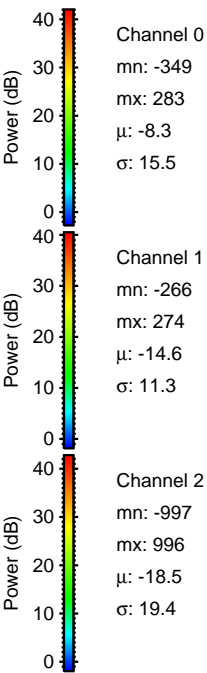
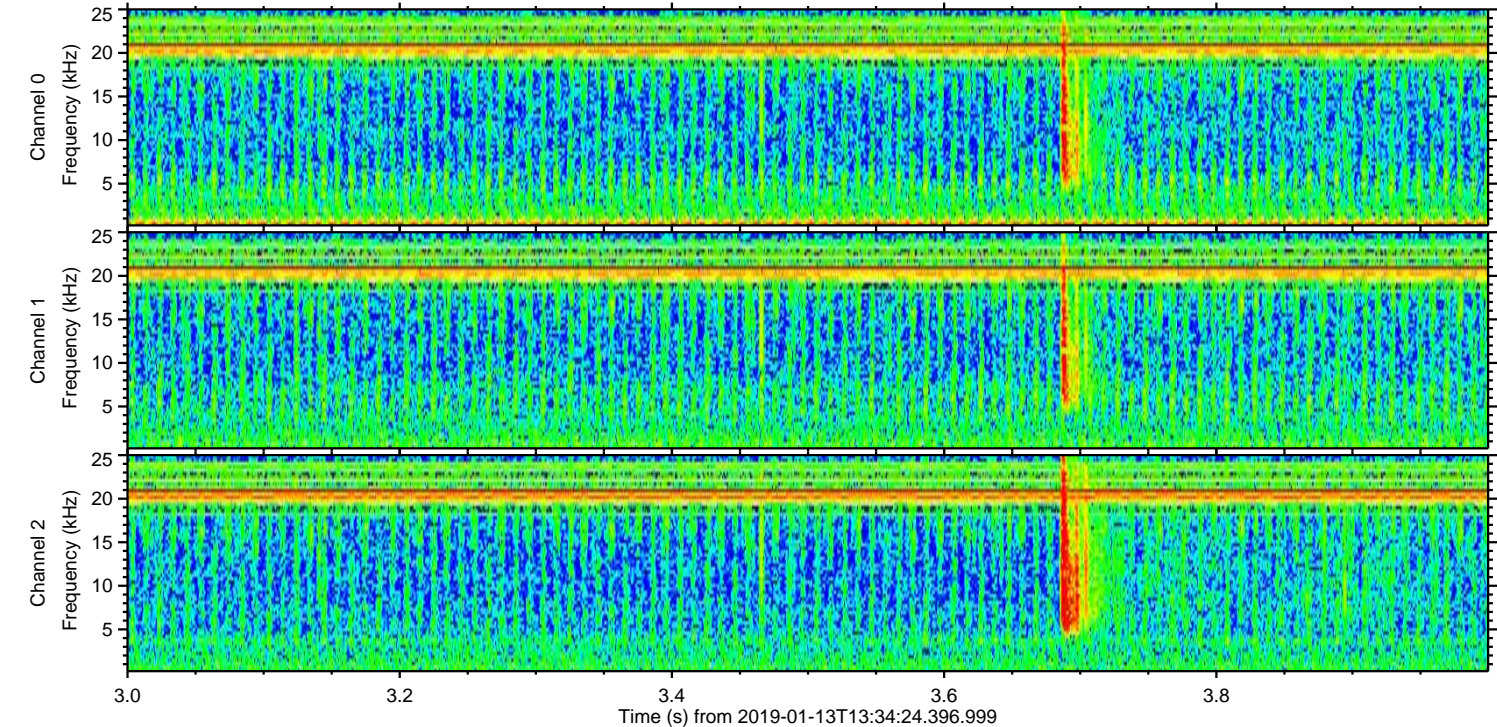
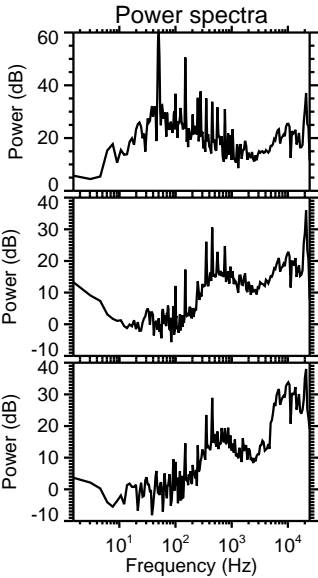
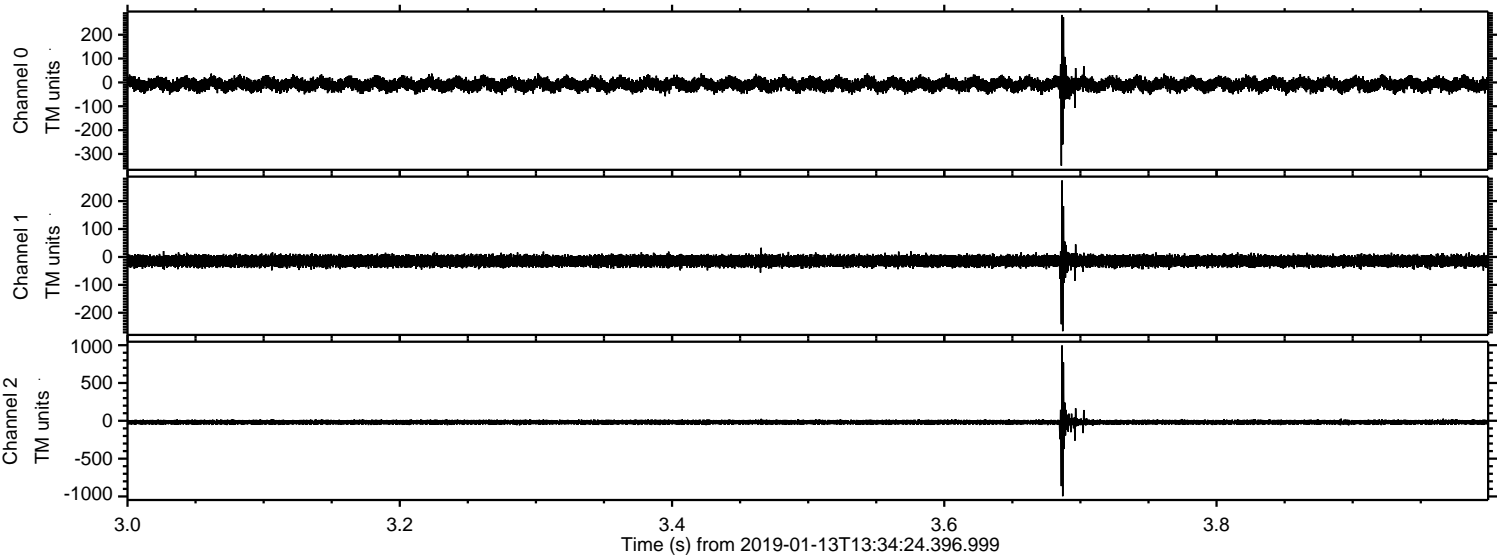


ELMAVAN 3D WAVEFORMS (Measured data sampled at 50 kHz) 51000 packets of 144 samples from 2019-01-13T13:34:24.396.999. Part 136/147

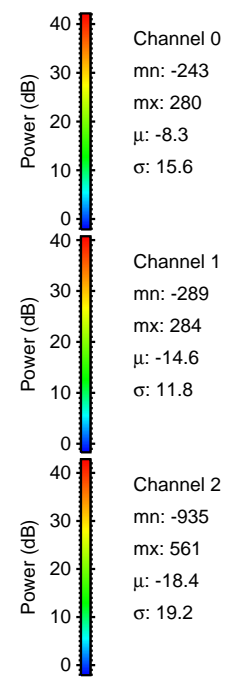
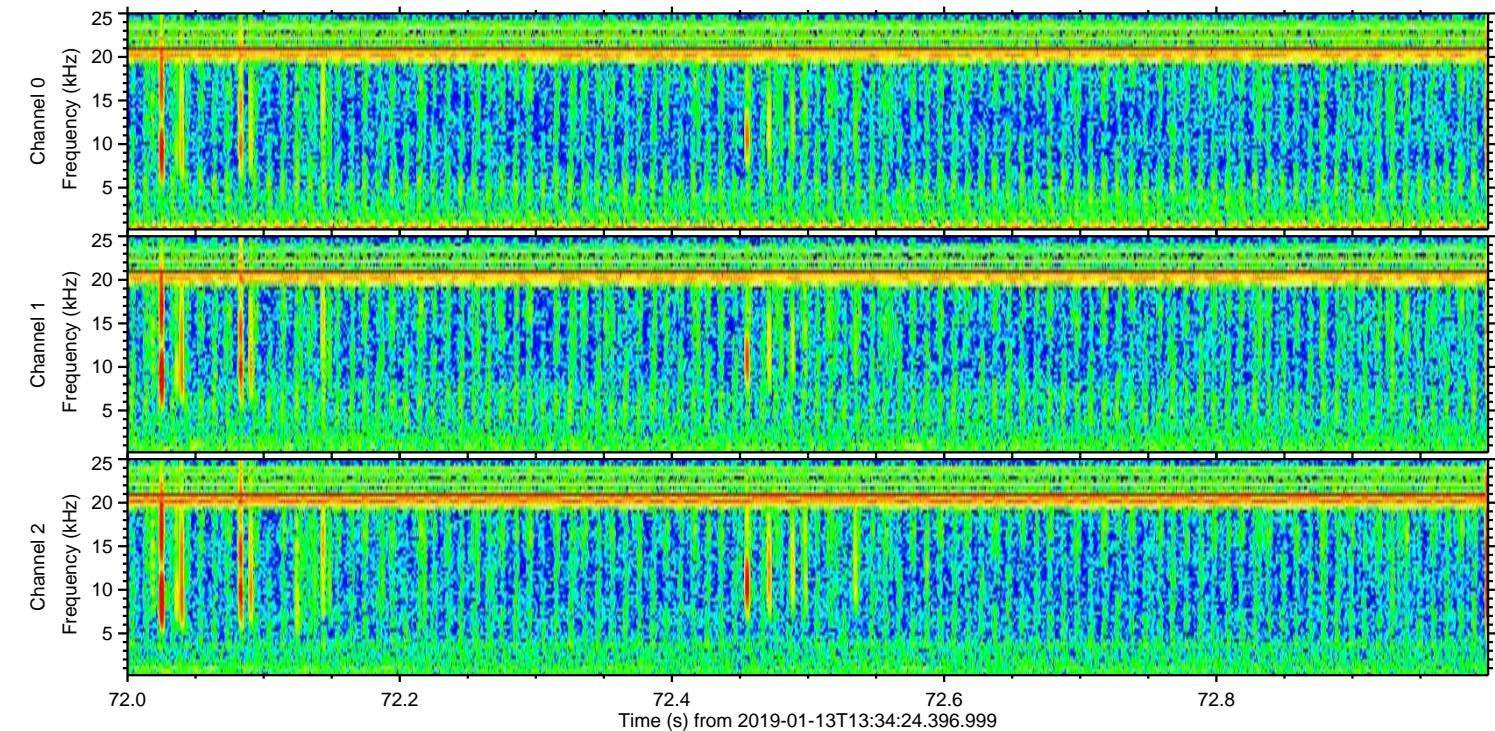
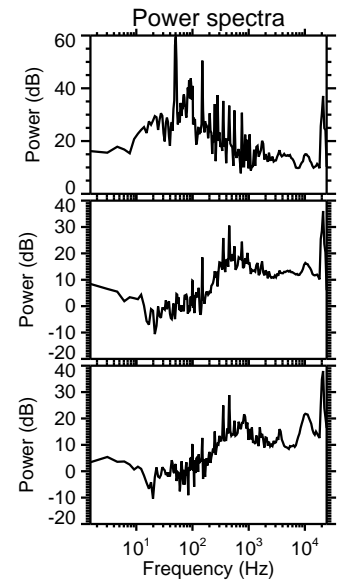
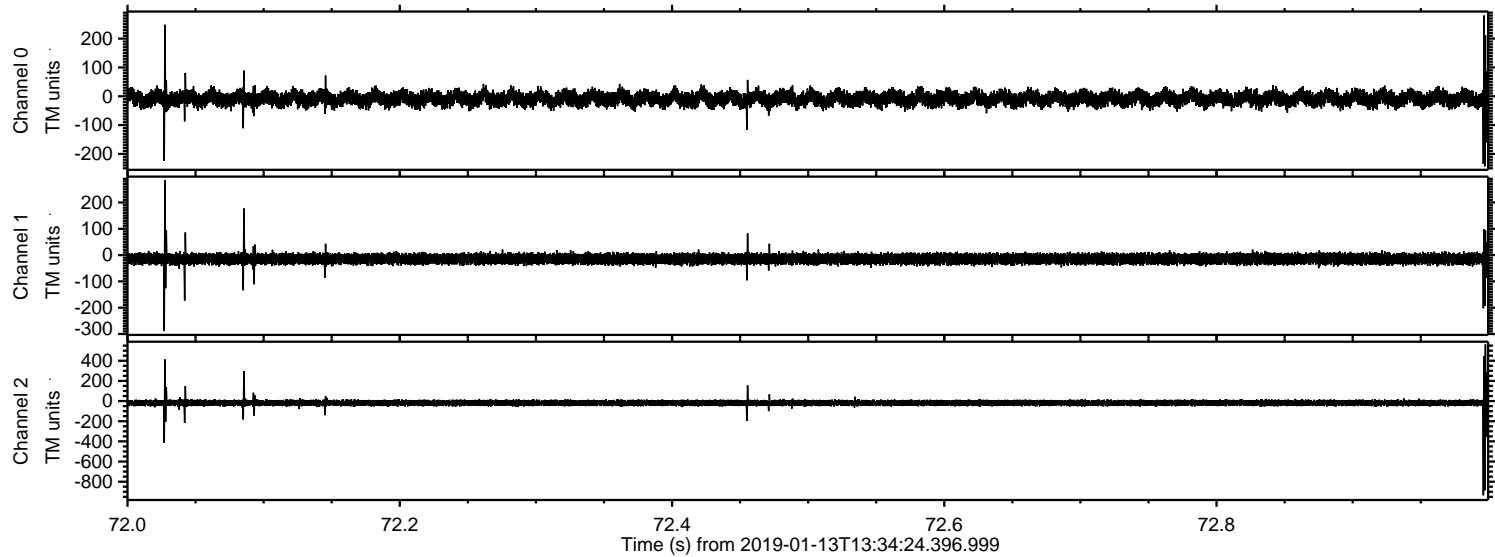
Processed Sun Jan 13 14:42:36 2019 by ELM ver.2012-10-06 from 001__elm20190113_133423__dat00.bin



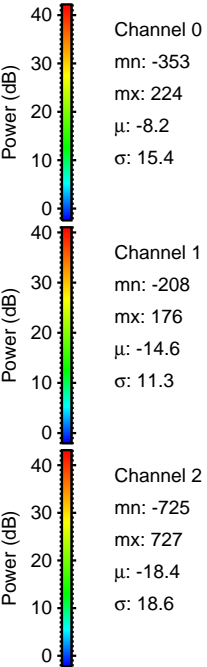
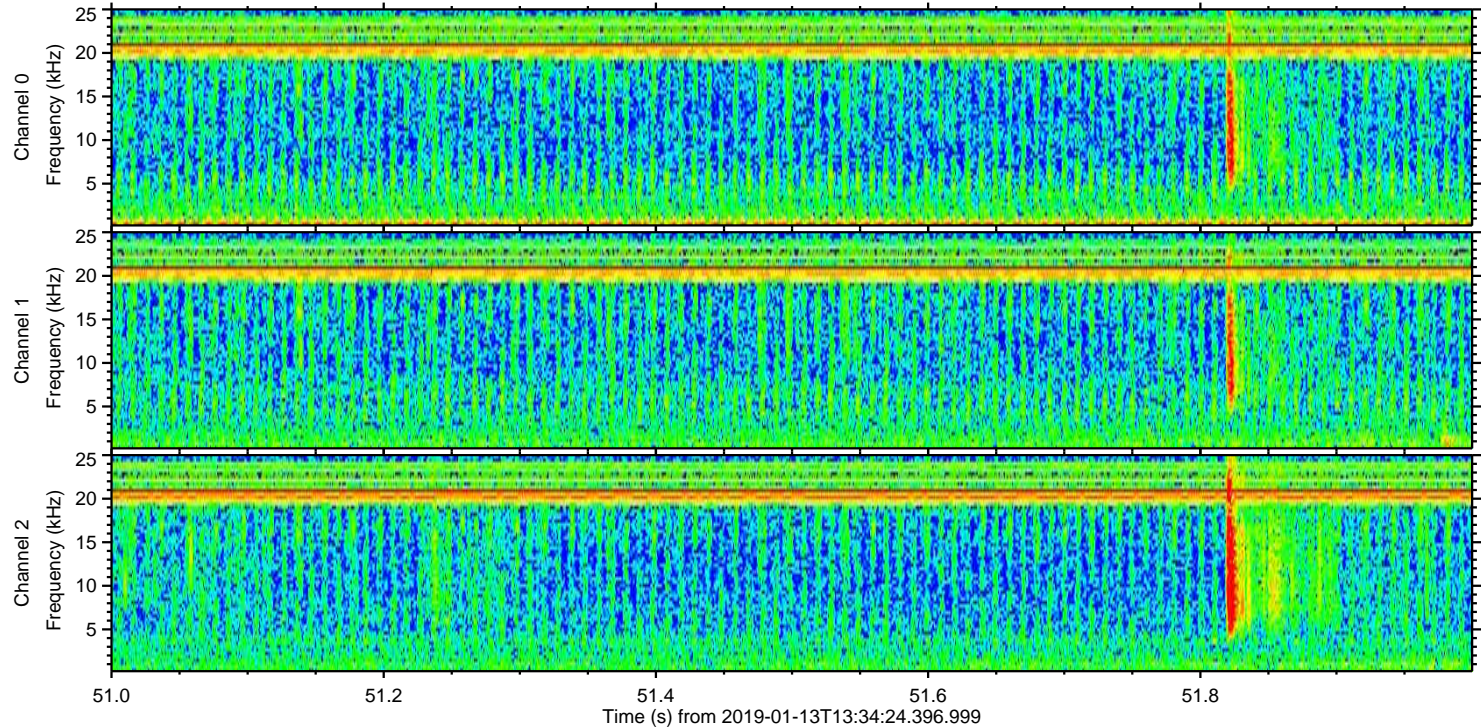
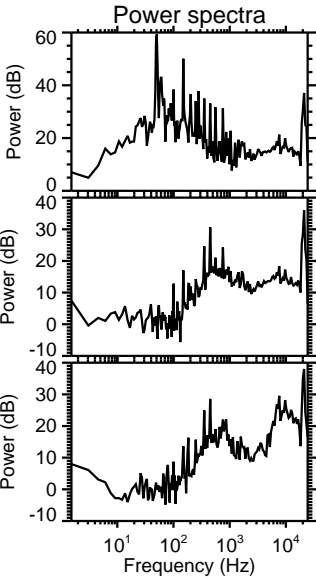
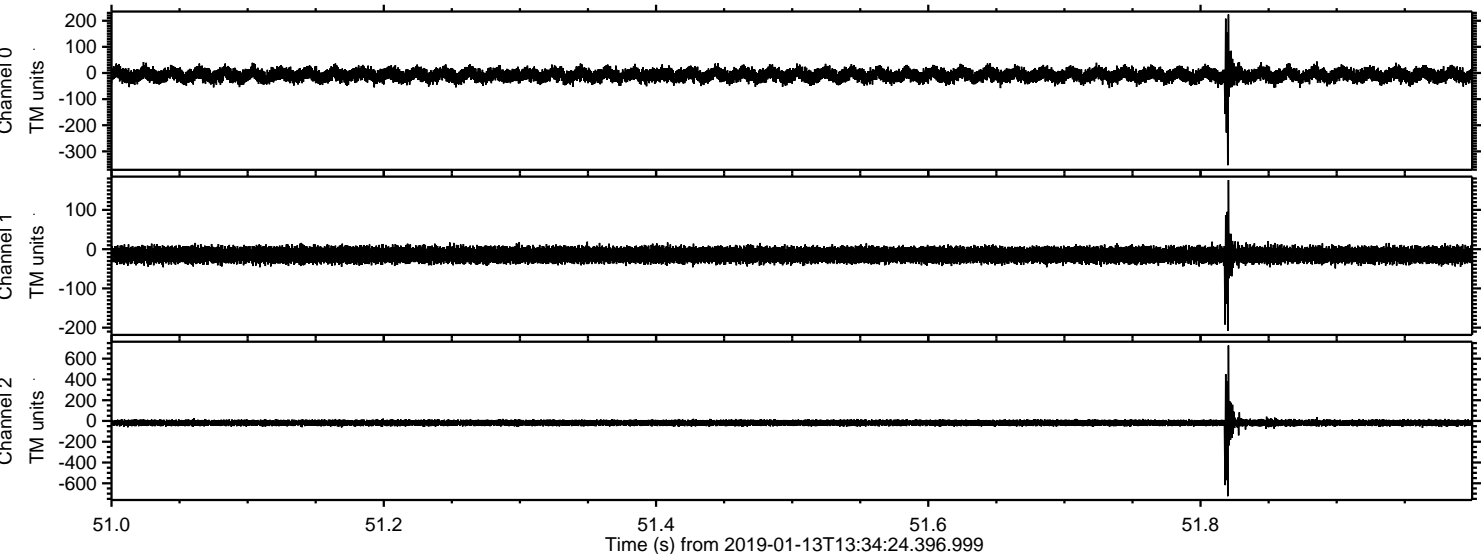
Processed Sun Jan 13 14:42:37 2019 by ELM ver.2012-10-06 from 001__elm20190113_133423__dat00.bin



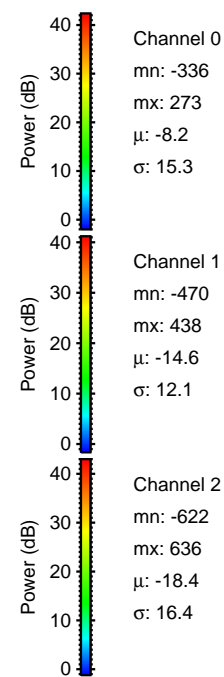
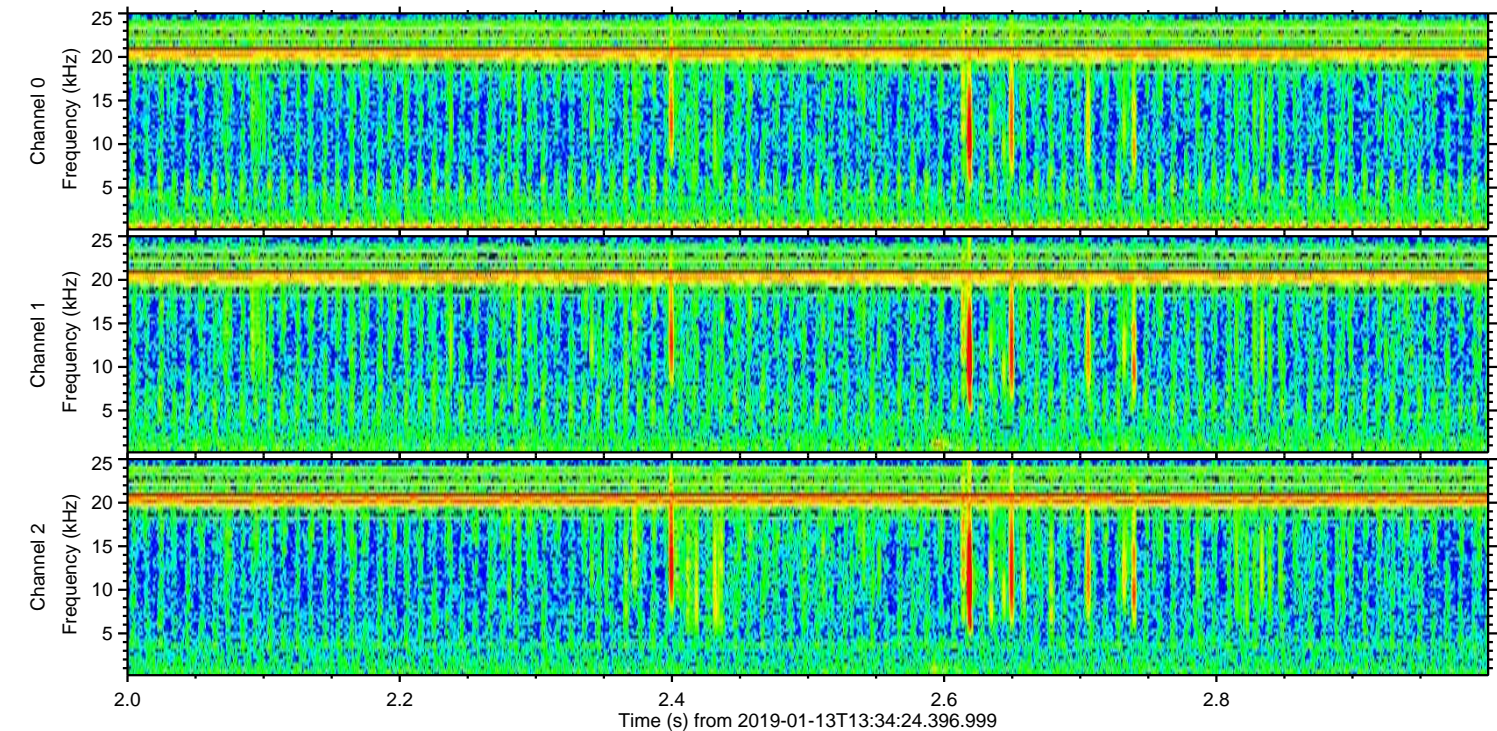
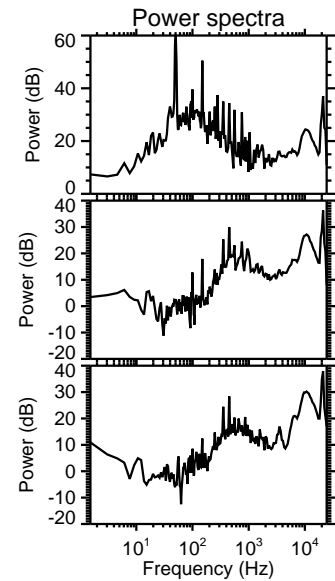
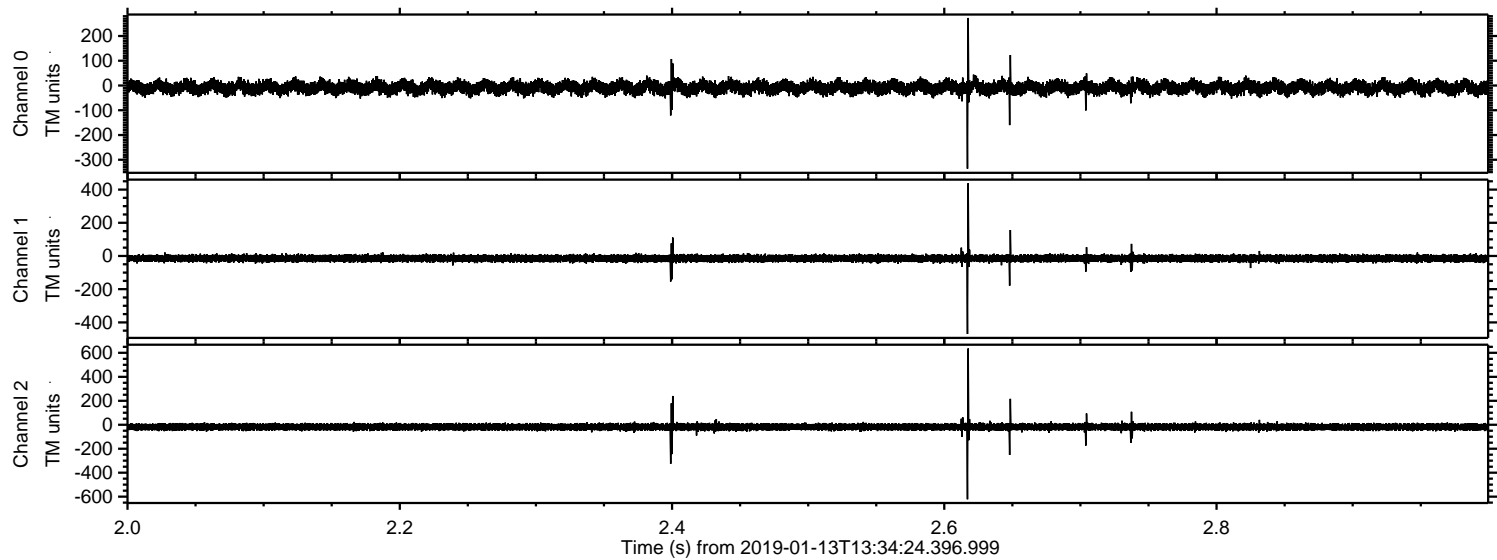
Processed Sun Jan 13 14:42:38 2019 by ELM ver.2012-10-06 from 001__elm20190113_133423__dat00.bin



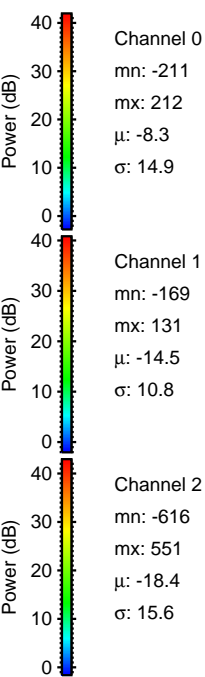
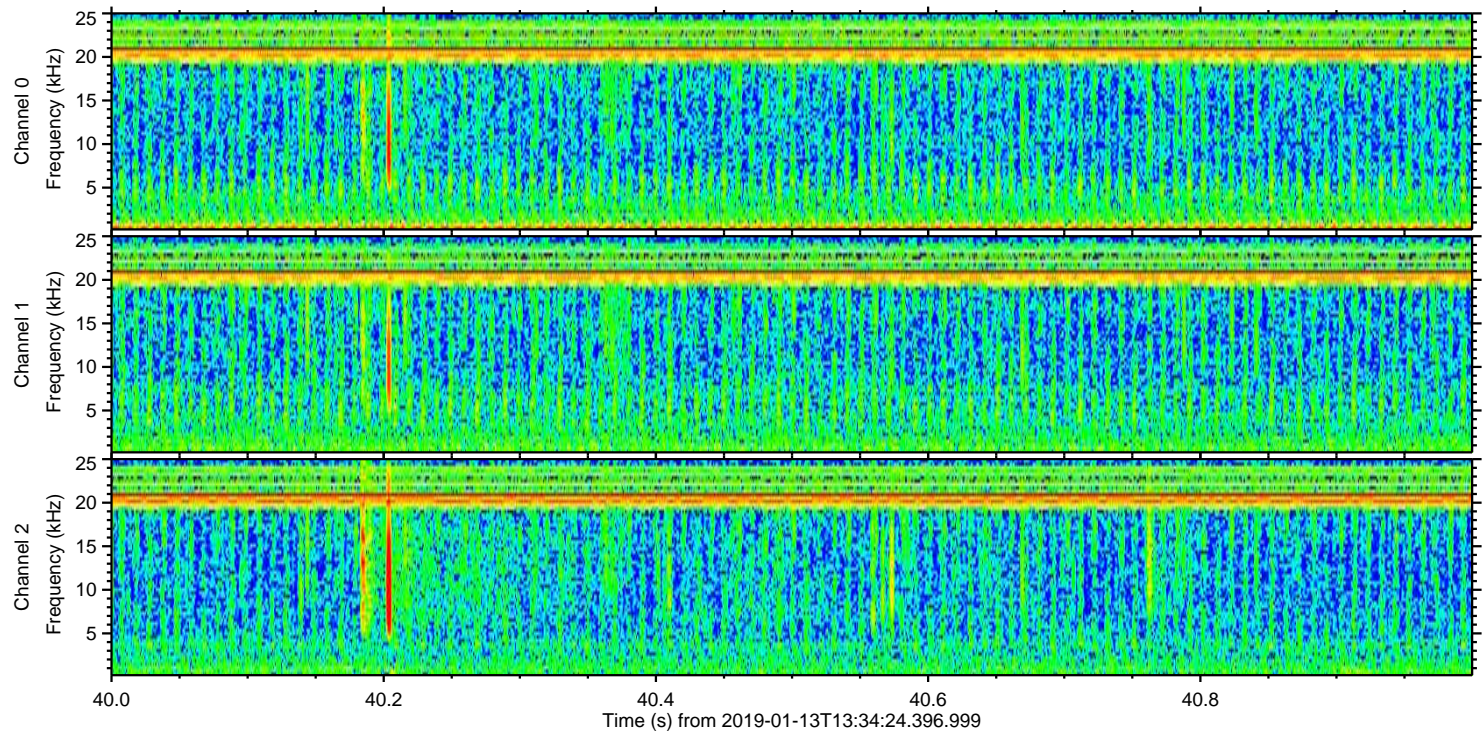
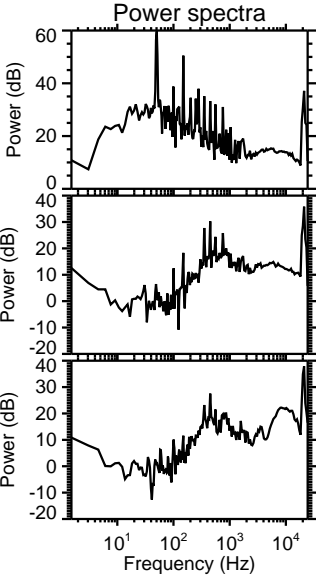
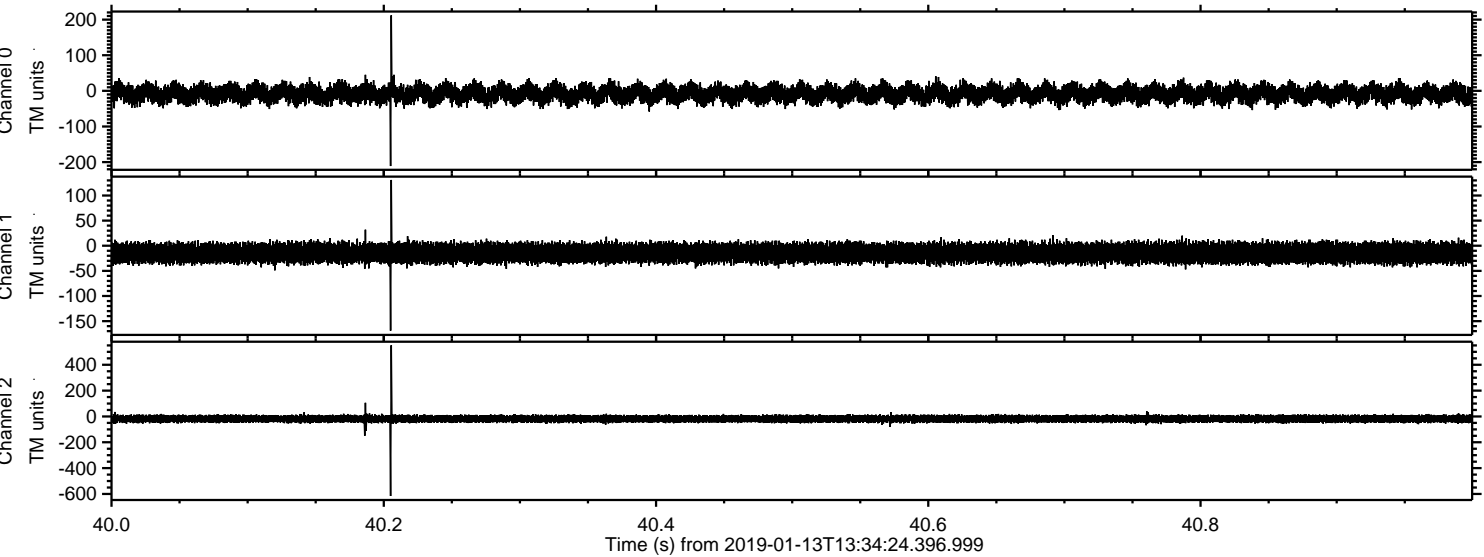
Processed Sun Jan 13 14:42:39 2019 by ELM ver.2012-10-06 from 001__elm20190113_133423__dat00.bin



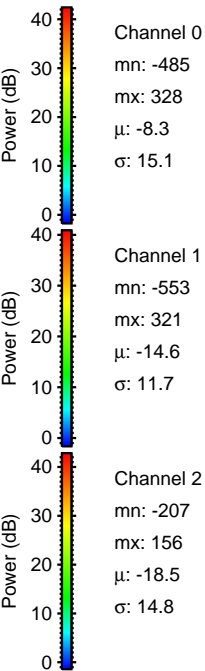
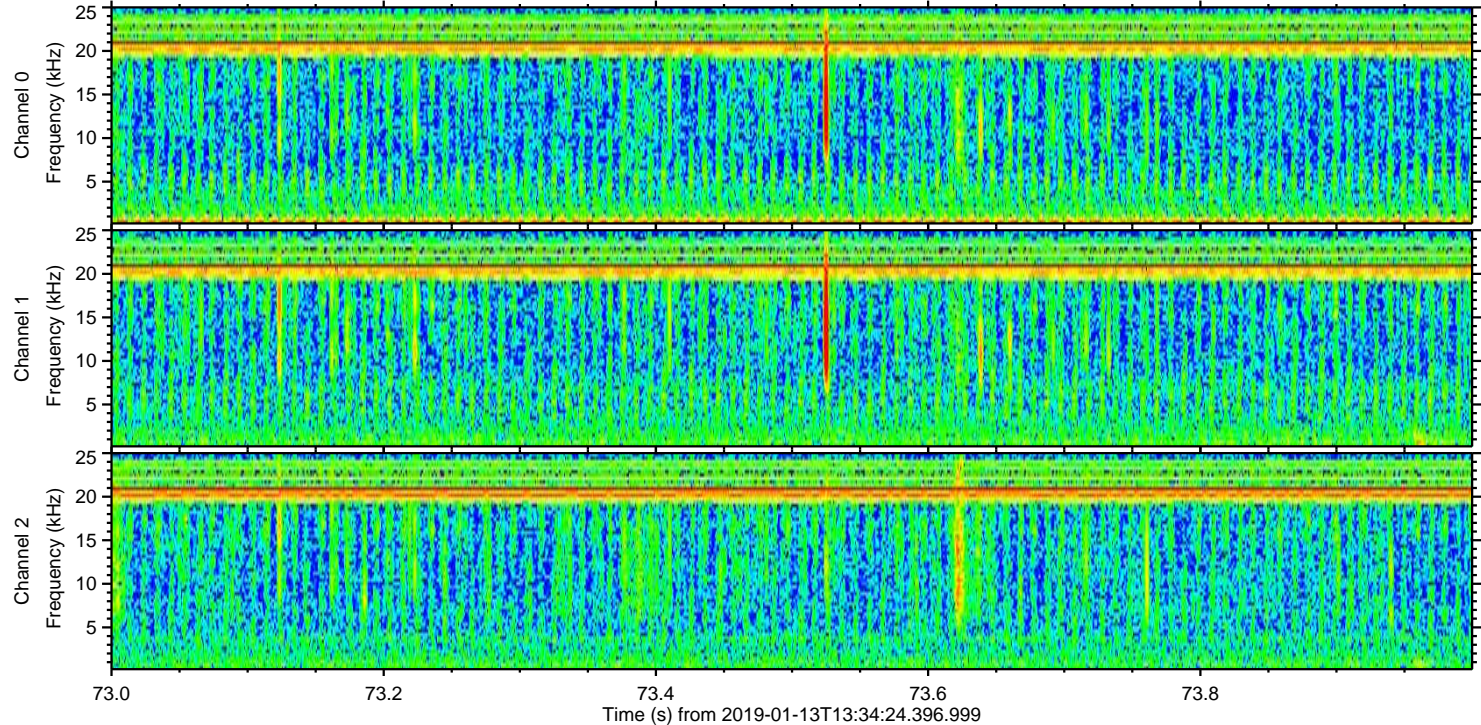
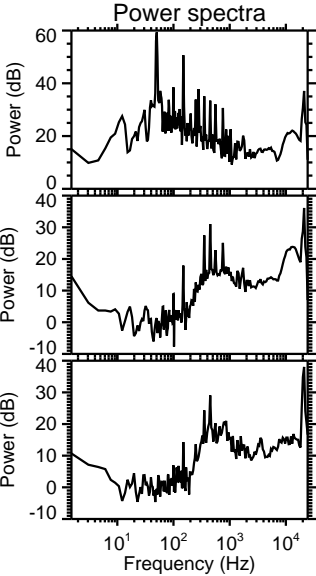
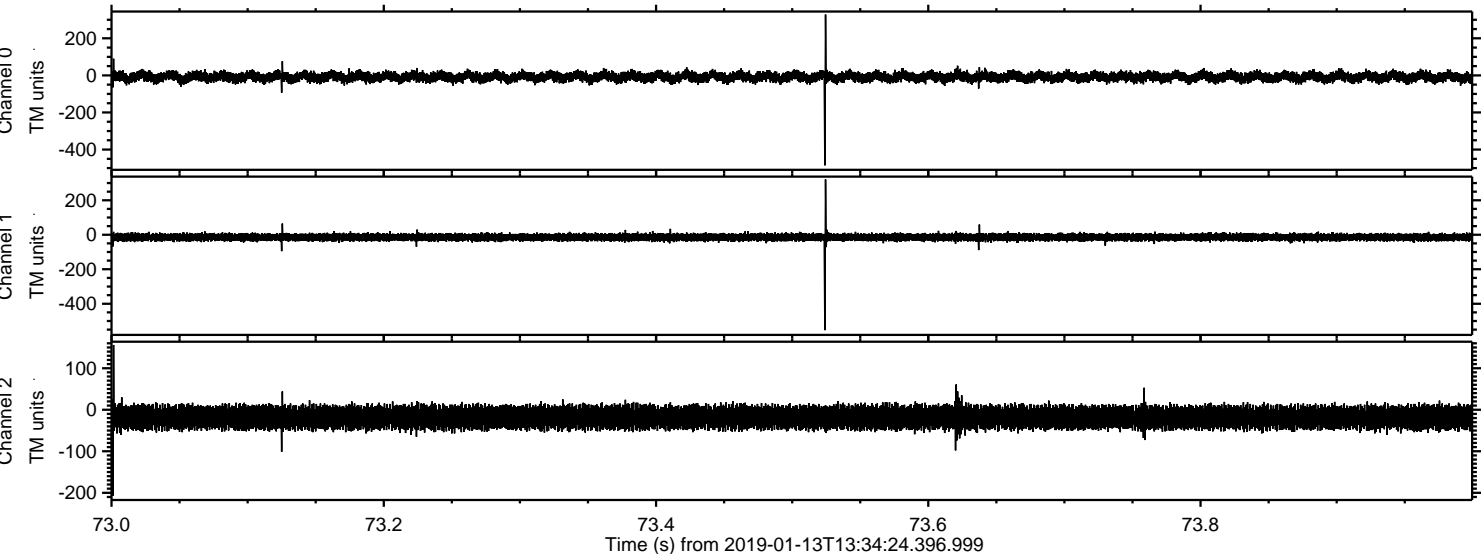
Processed Sun Jan 13 14:42:39 2019 by ELM ver.2012-10-06 from 001__elm20190113_133423__dat00.bin



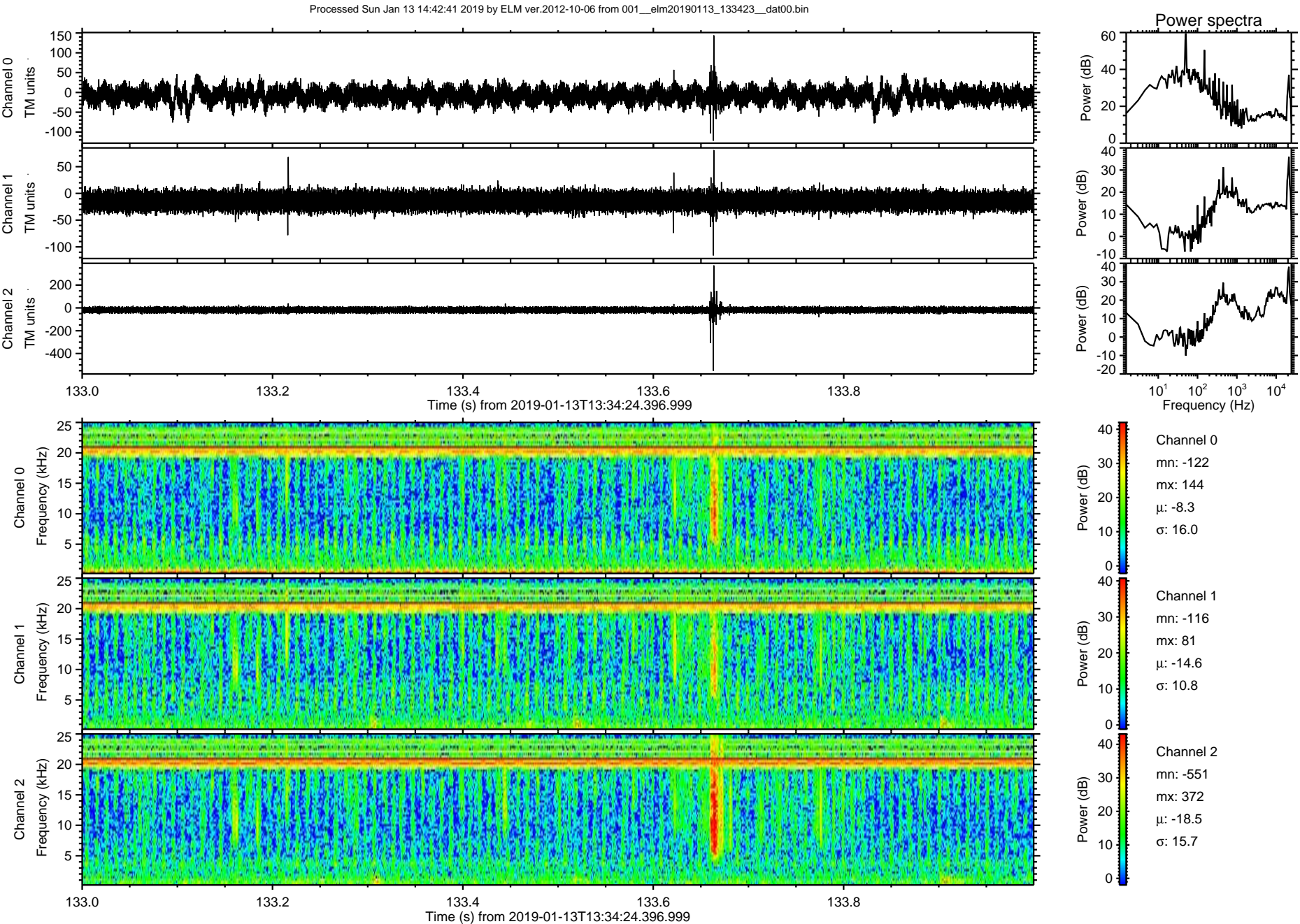
Processed Sun Jan 13 14:42:40 2019 by ELM ver.2012-10-06 from 001__elm20190113_133423__dat00.bin



Processed Sun Jan 13 14:42:41 2019 by ELM ver.2012-10-06 from 001__elm20190113_133423__dat00.bin

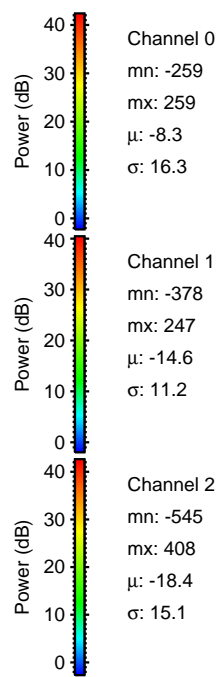
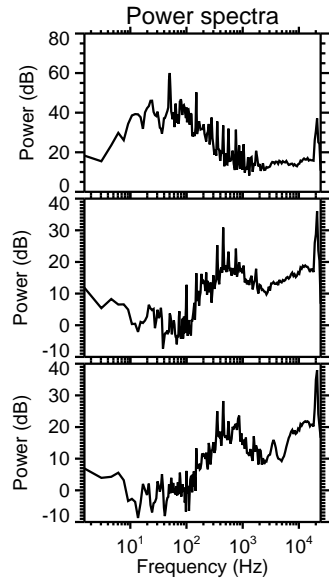
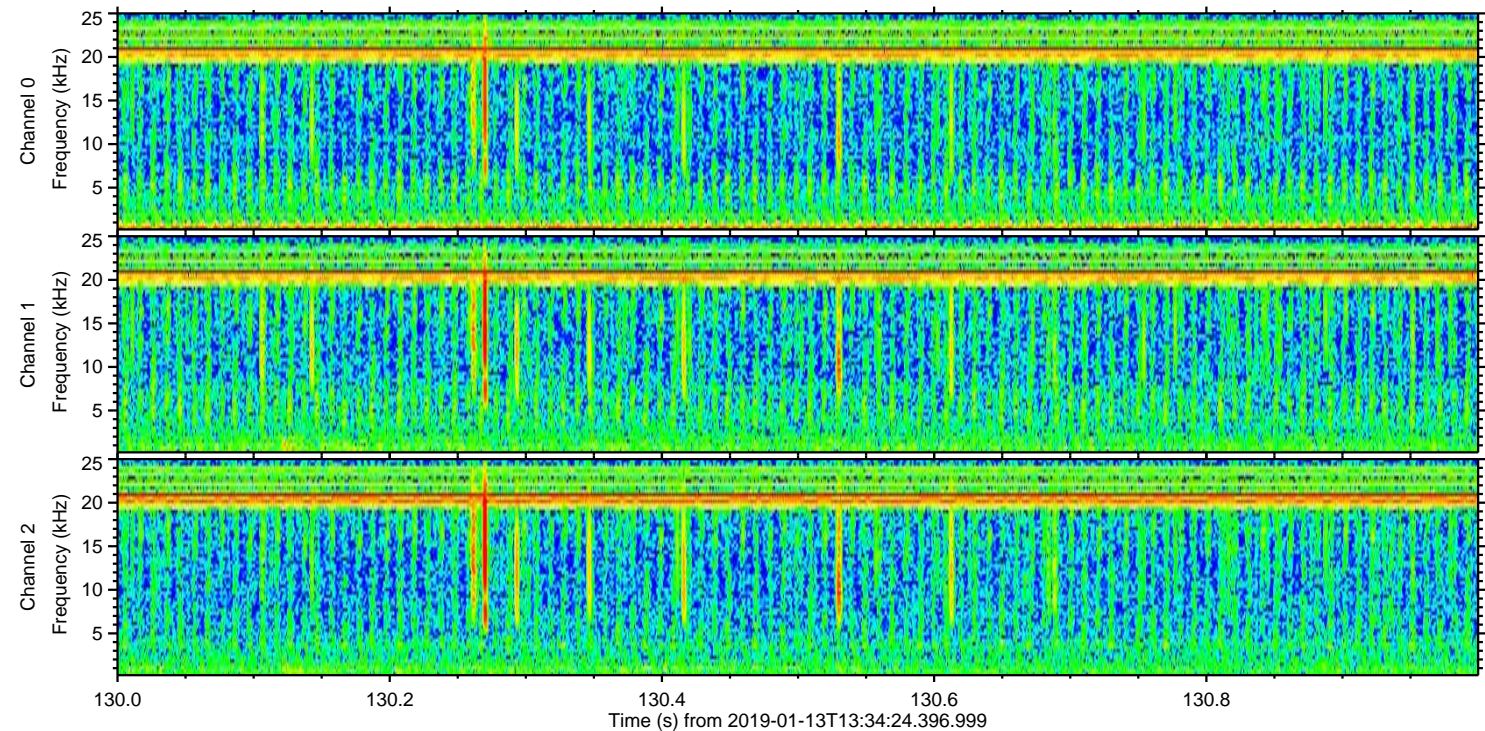
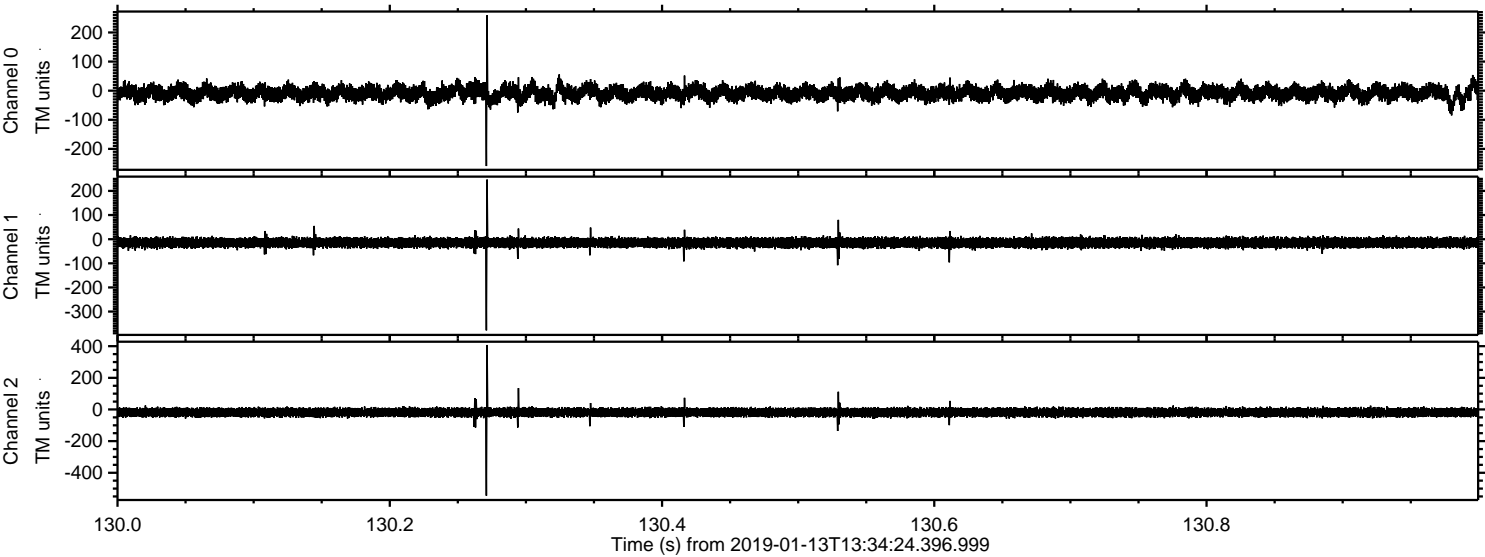


ELMAVAN 3D WAVEFORMS (Measured data sampled at 50 kHz) 51000 packets of 144 samples from 2019-01-13T13:34:24.396.999. Part 134/147



ELMAVAN 3D WAVEFORMS (Measured data sampled at 50 kHz) 51000 packets of 144 samples from 2019-01-13T13:34:24.396.999. Part 131/147

Processed Sun Jan 13 14:42:42 2019 by ELM ver.2012-10-06 from 001__elm20190113_133423__dat00.bin



Channel 0
mn: -259
mx: 259
 μ : -8.3
 σ : 16.3

Channel 1
mn: -378
mx: 247
 μ : -14.6
 σ : 11.2

Channel 2
mn: -545
mx: 408
 μ : -18.4
 σ : 15.1

Processed Sun Jan 13 14:42:43 2019 by ELM ver.2012-10-06 from 001__elm20190113_133423__dat00.bin

