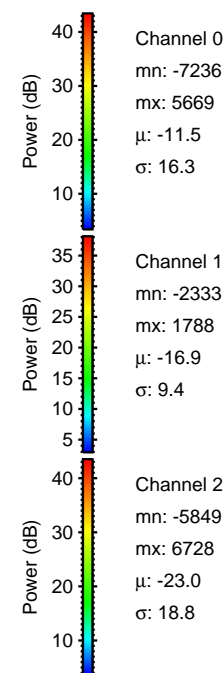
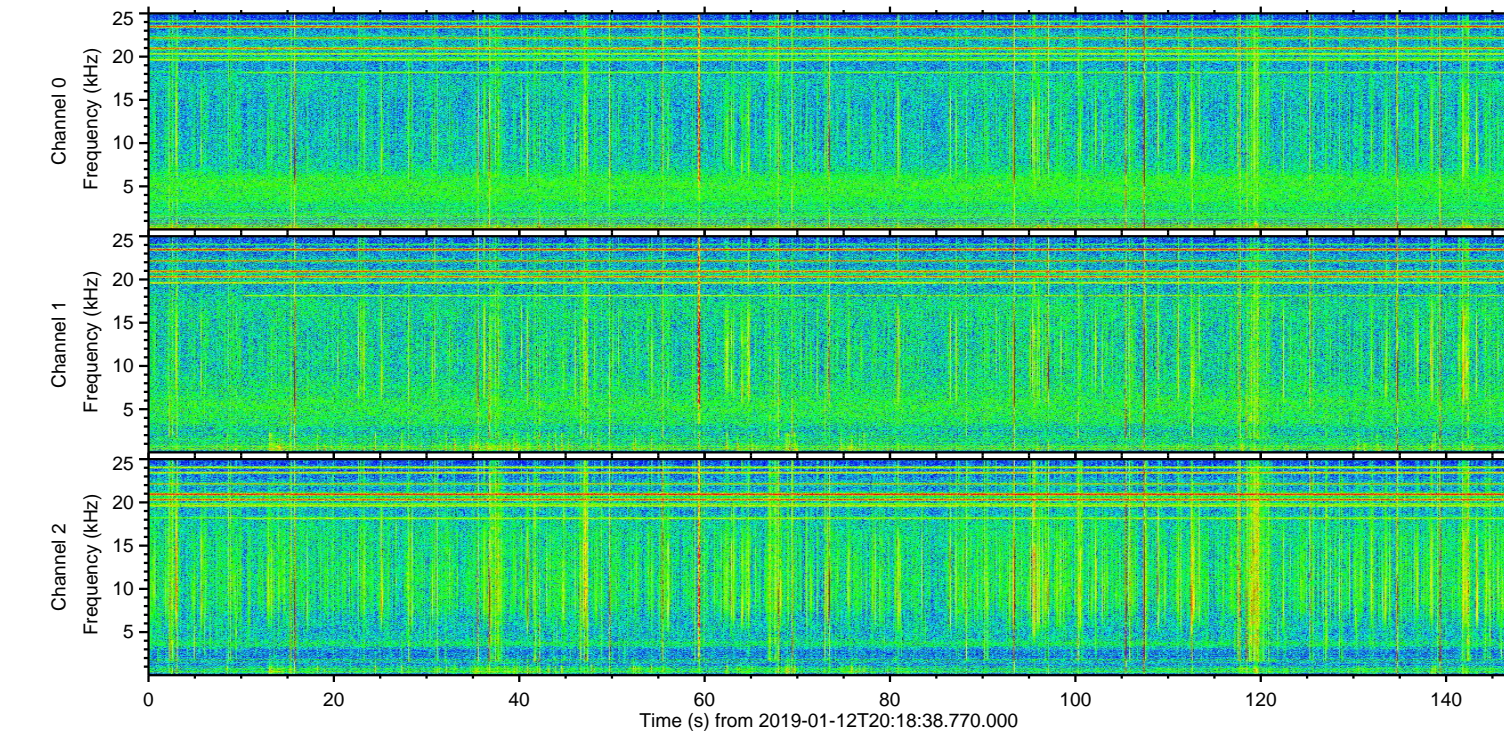
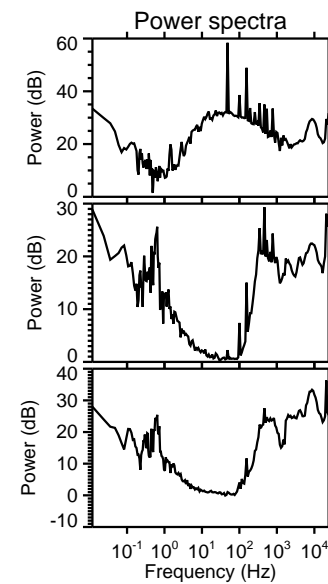
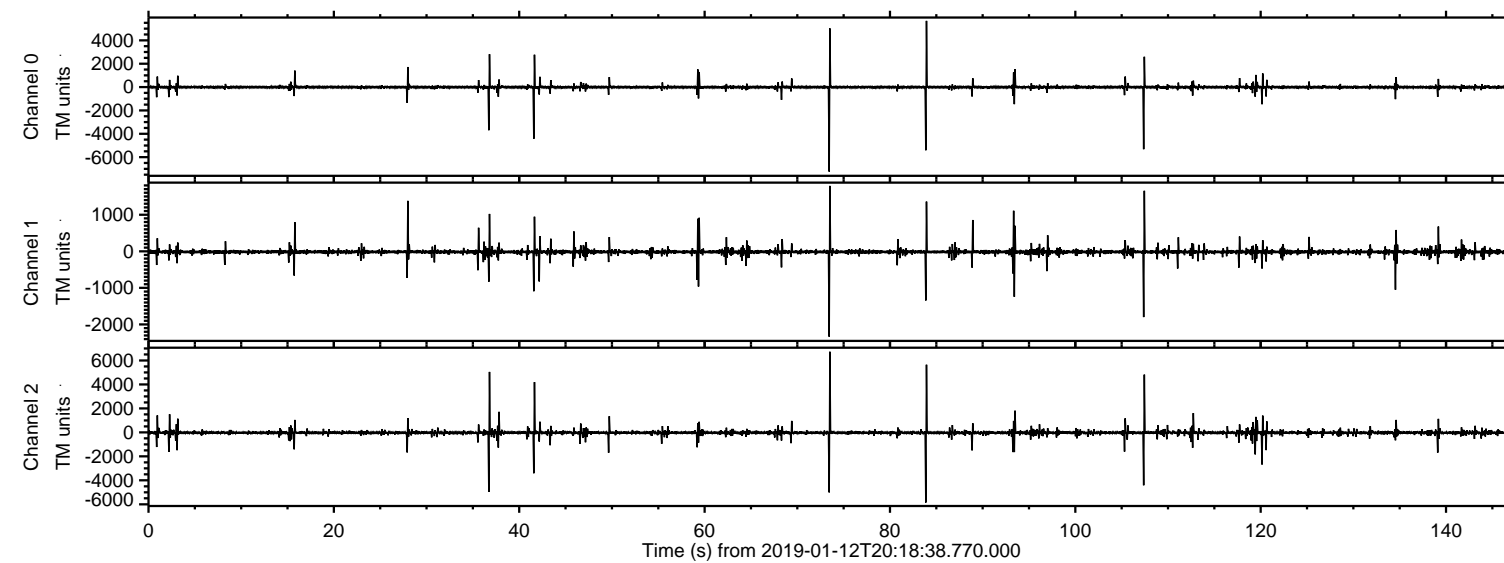
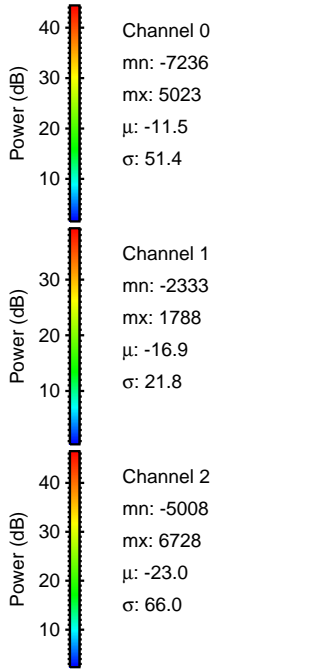
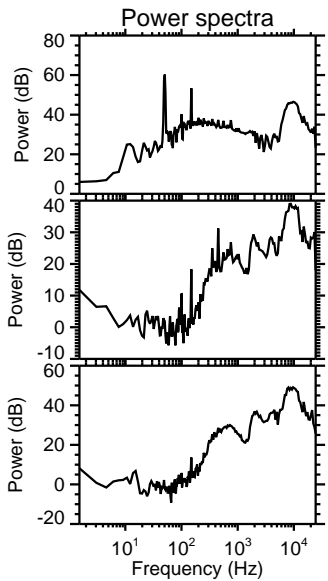
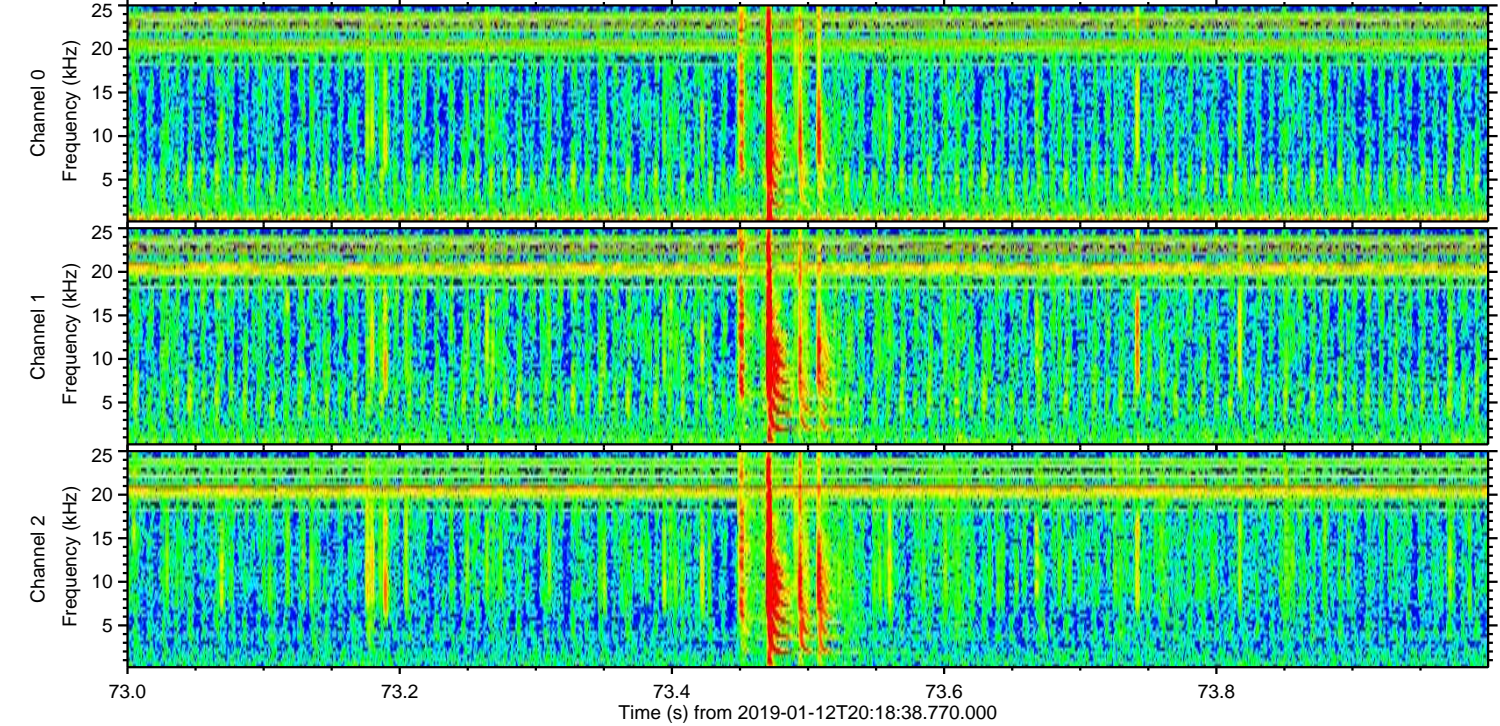
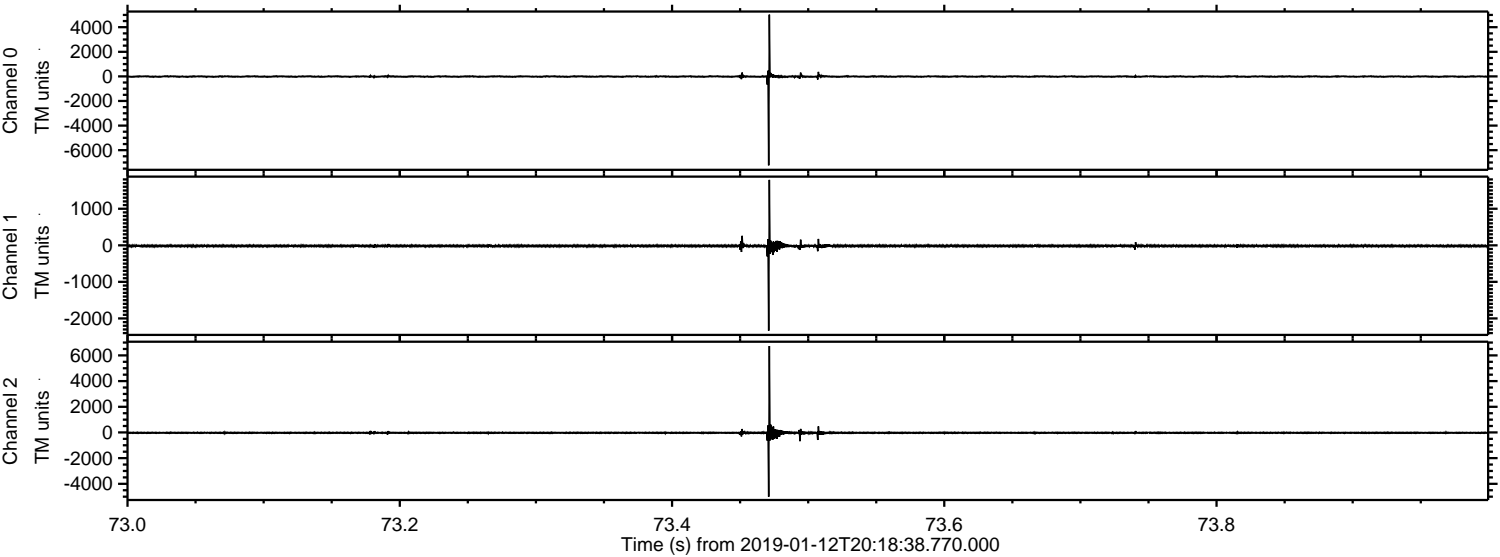


ELMAVAN 3D WAVEFORMS (Measured data sampled at 50 kHz) 51000 packets of 144 samples from 2019-01-12T20:18:38.770.000.

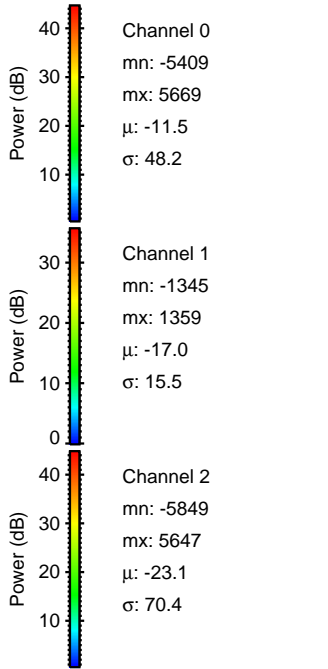
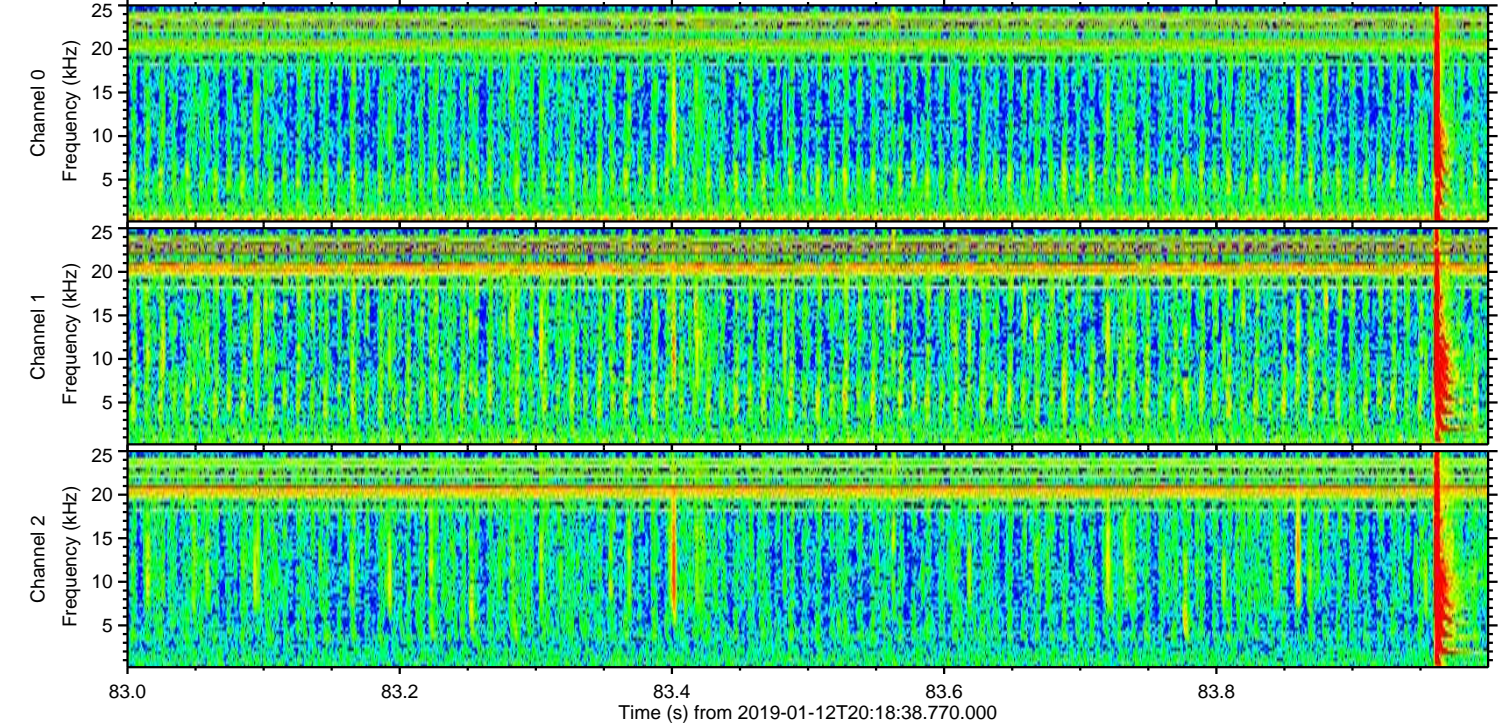
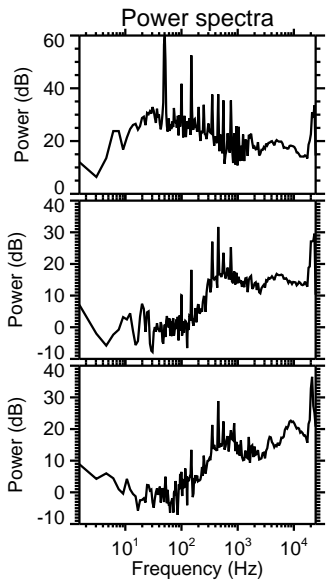
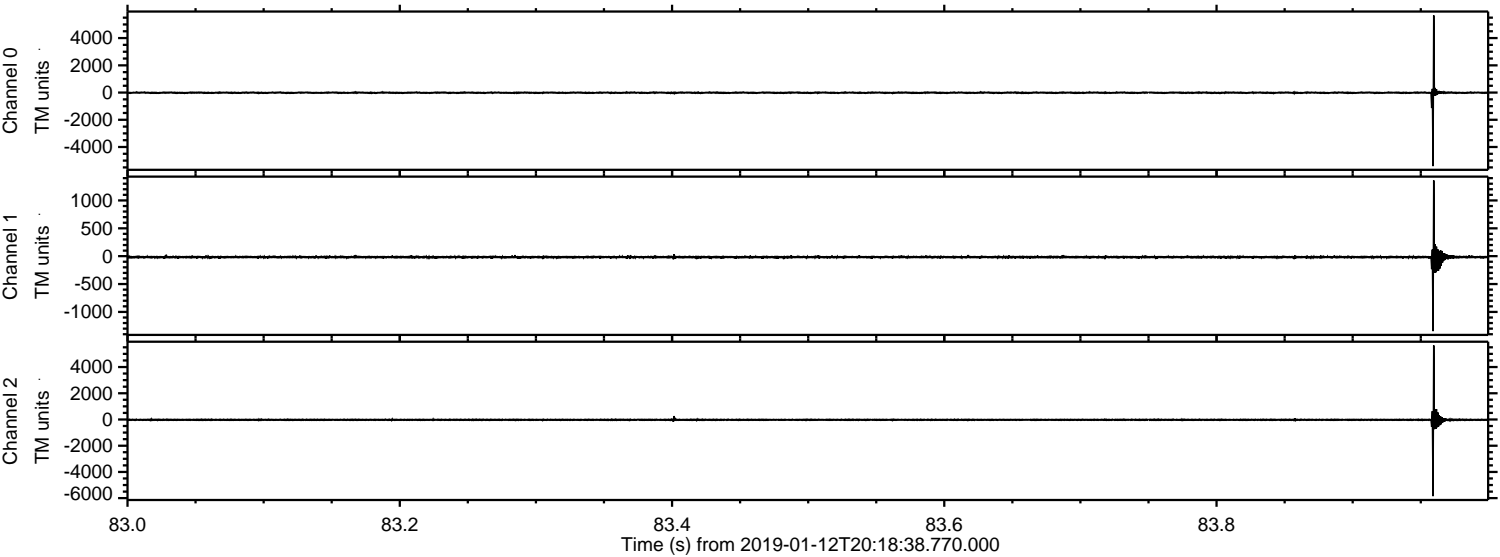
Processed Sat Jan 12 21:26:03 2019 by ELM ver.2012-10-06 from 001__elm20190112_201837__dat00.bin



Processed Sat Jan 12 21:26:10 2019 by ELM ver.2012-10-06 from 001__elm20190112_201837__dat00.bin

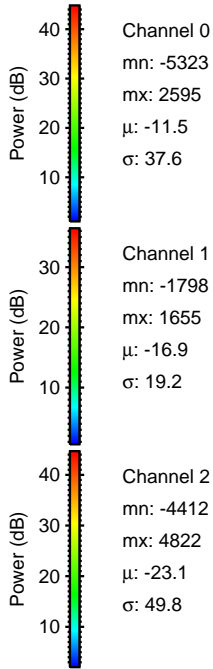
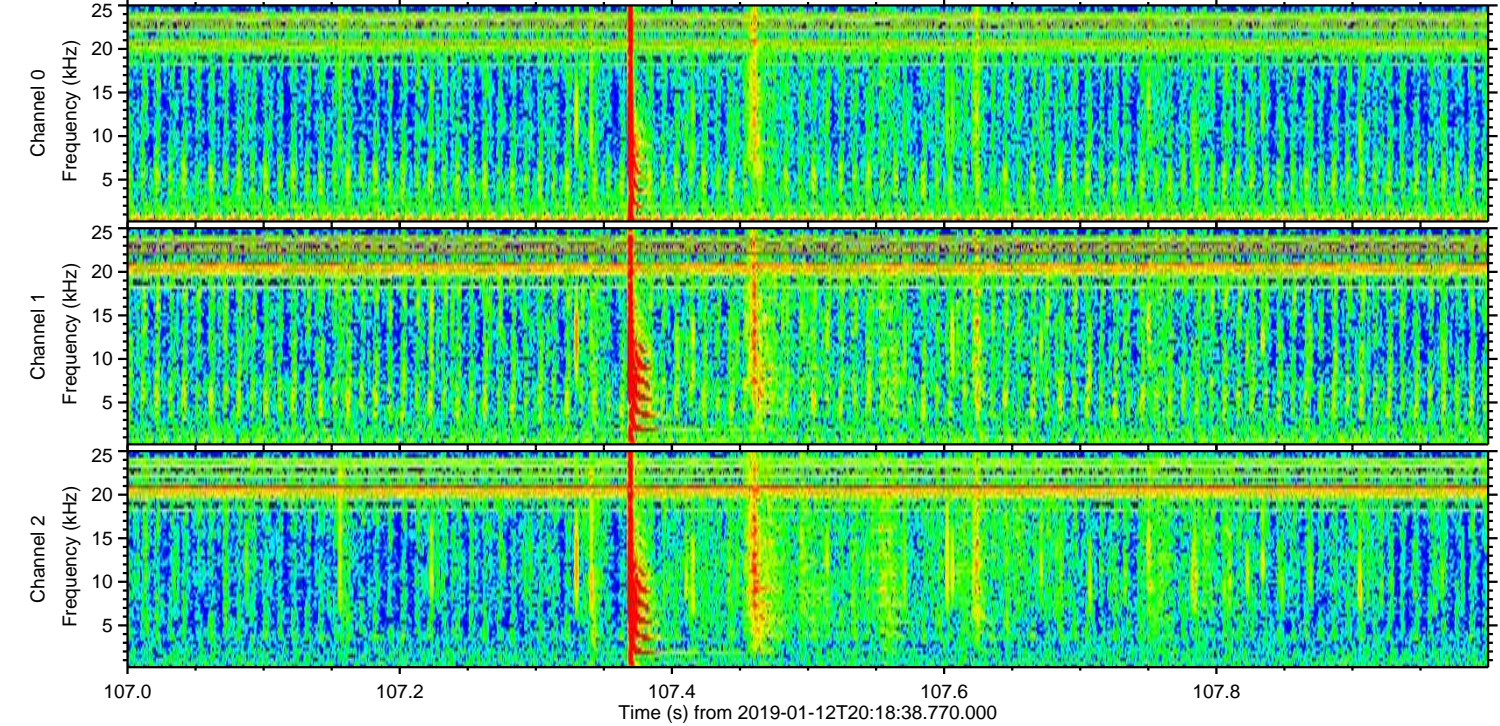
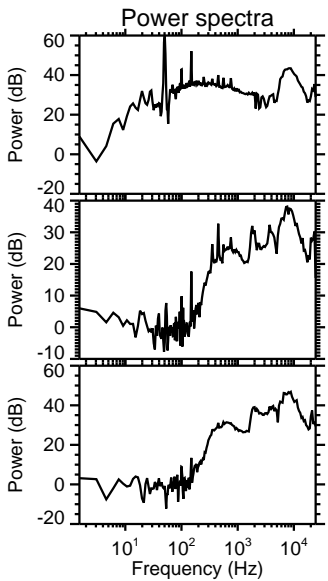
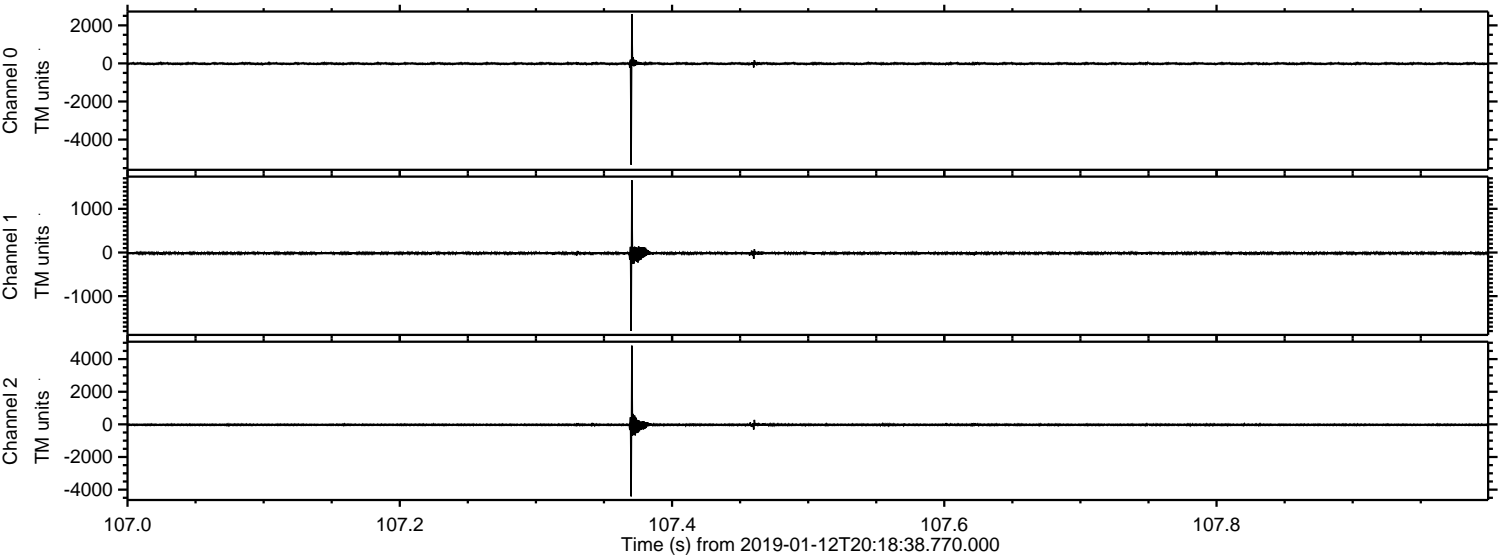


Processed Sat Jan 12 21:26:11 2019 by ELM ver.2012-10-06 from 001__elm20190112_201837__dat00.bin

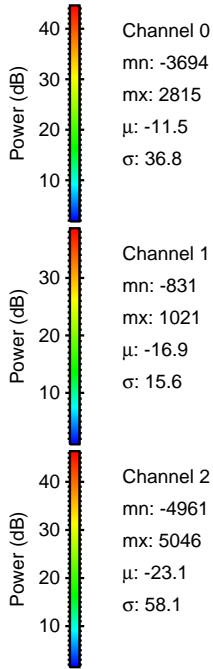
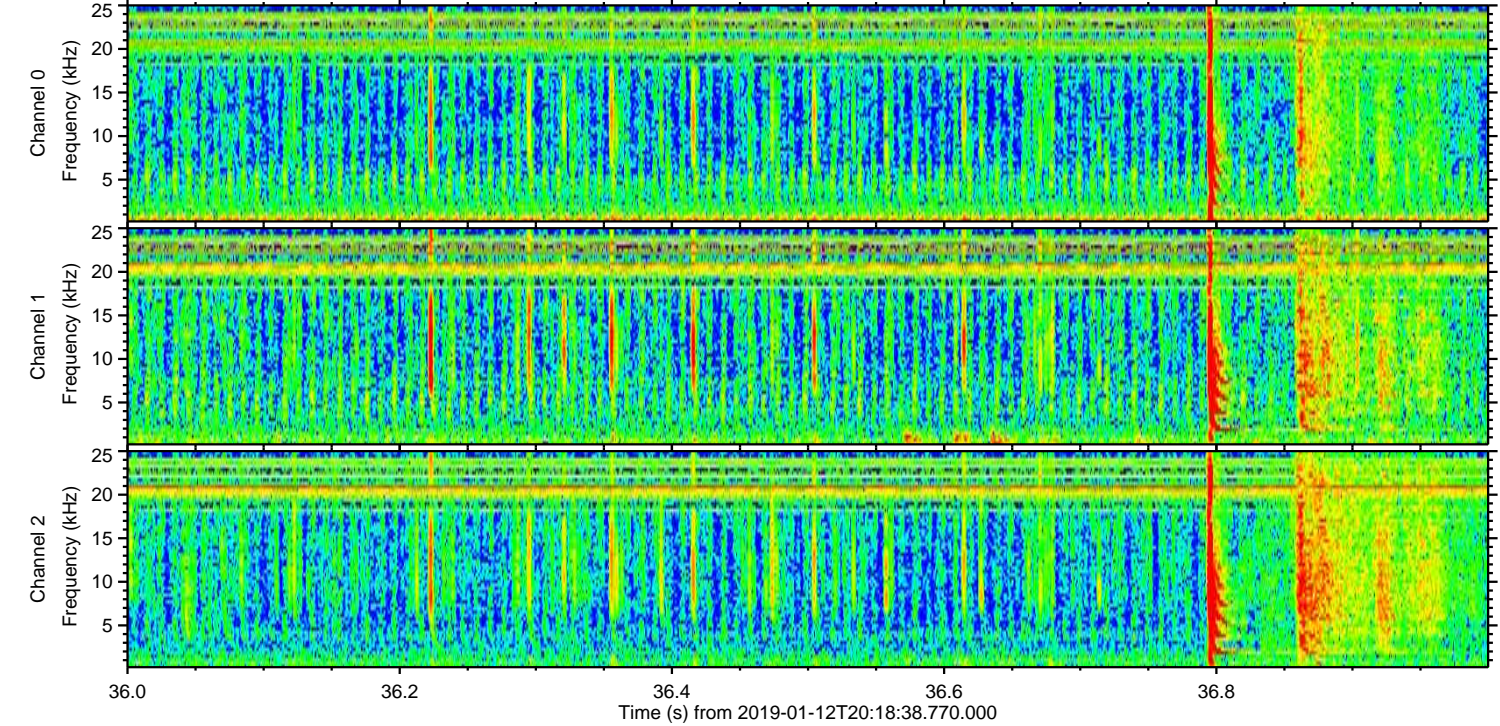
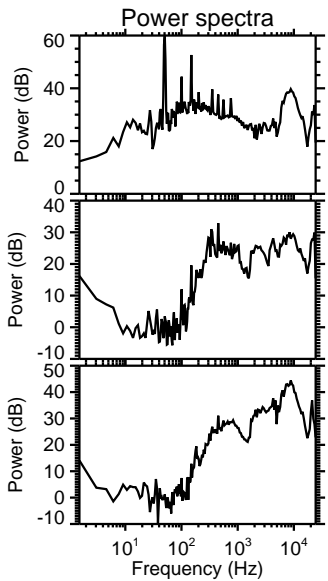
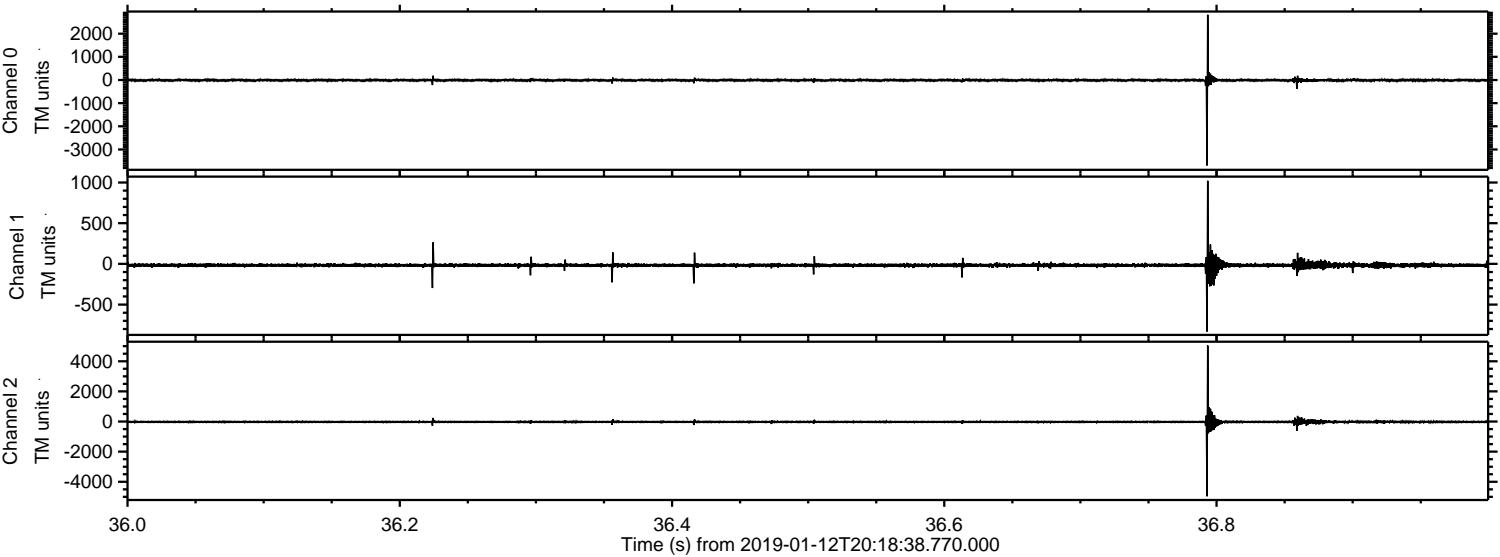


ELMAVAN 3D WAVEFORMS (Measured data sampled at 50 kHz) 51000 packets of 144 samples from 2019-01-12T20:18:38.770.000. Part 108/147

Processed Sat Jan 12 21:26:11 2019 by ELM ver.2012-10-06 from 001__elm20190112_201837__dat00.bin

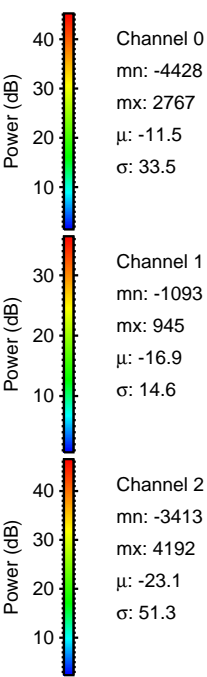
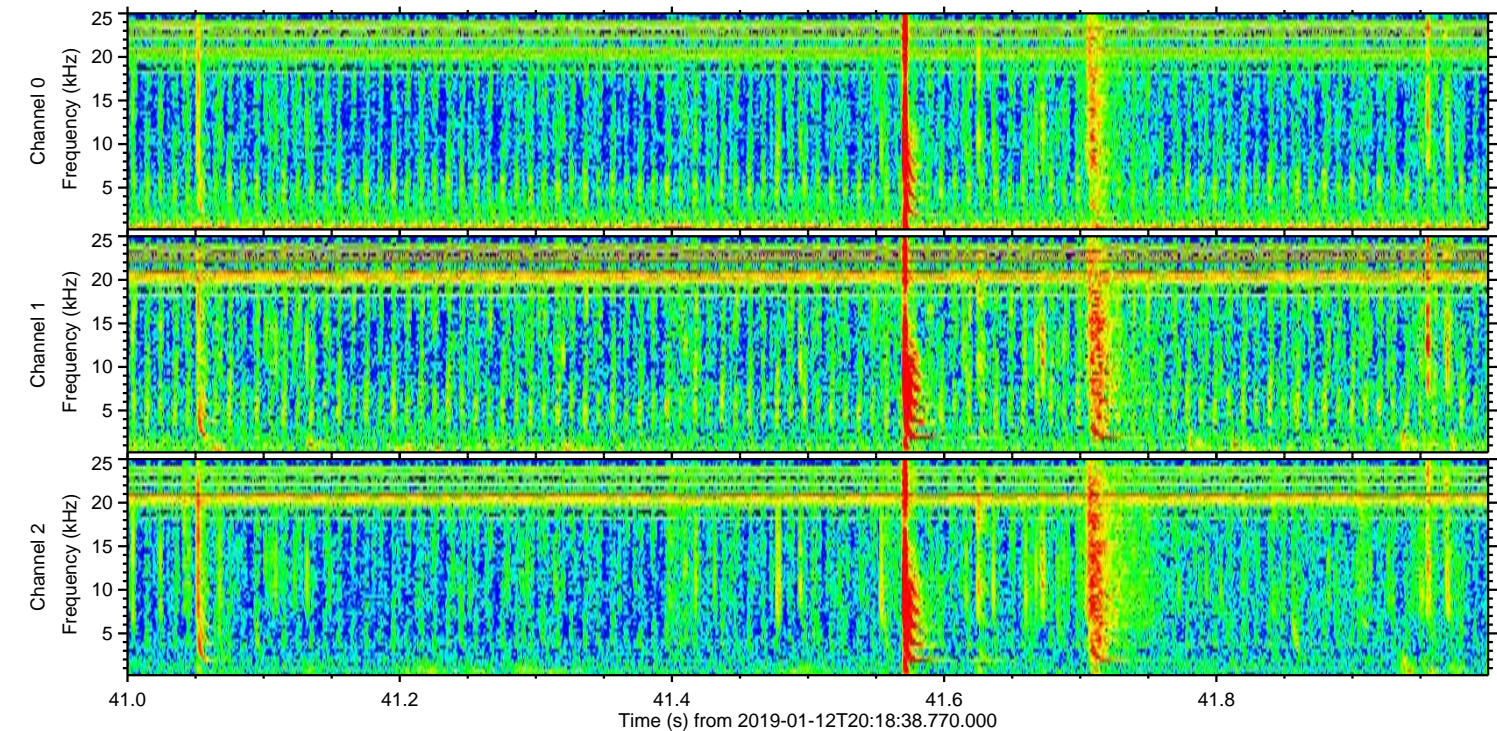
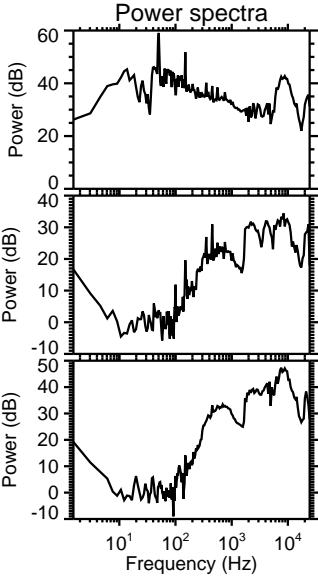
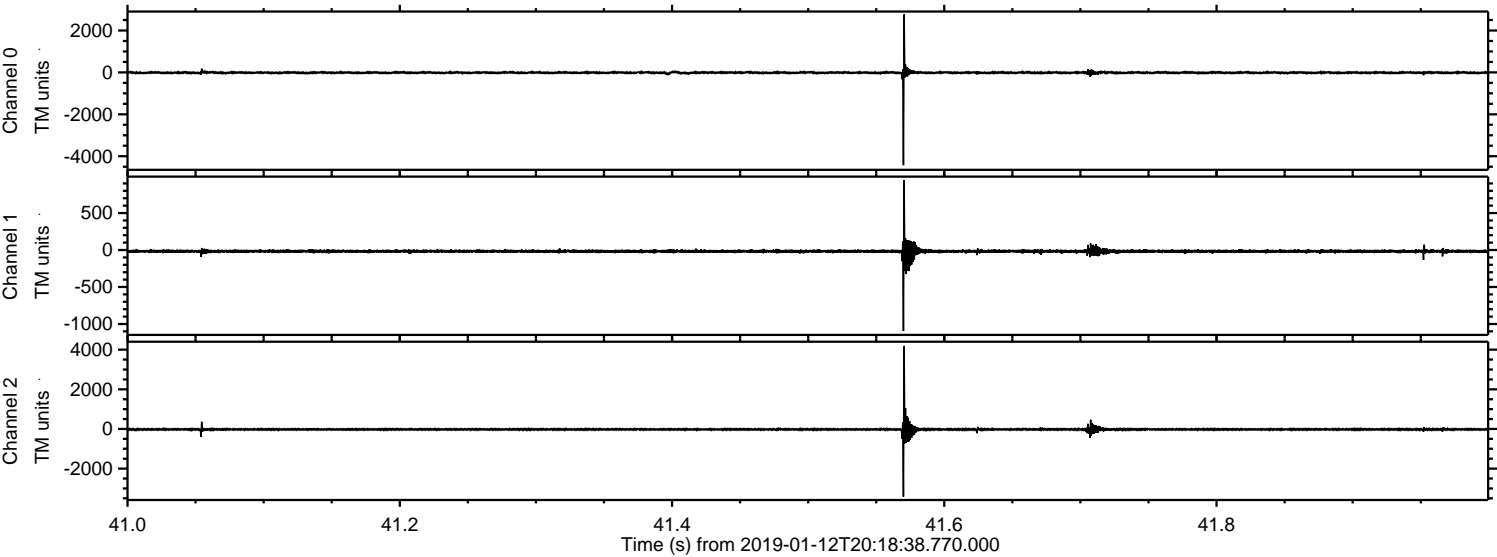


Processed Sat Jan 12 21:26:12 2019 by ELM ver.2012-10-06 from 001__elm20190112_201837__dat00.bin



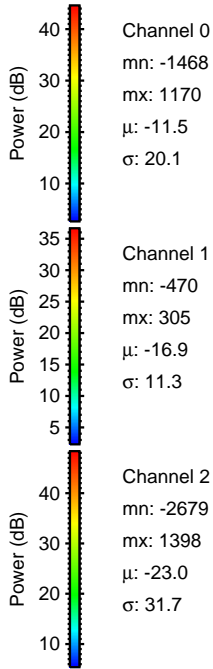
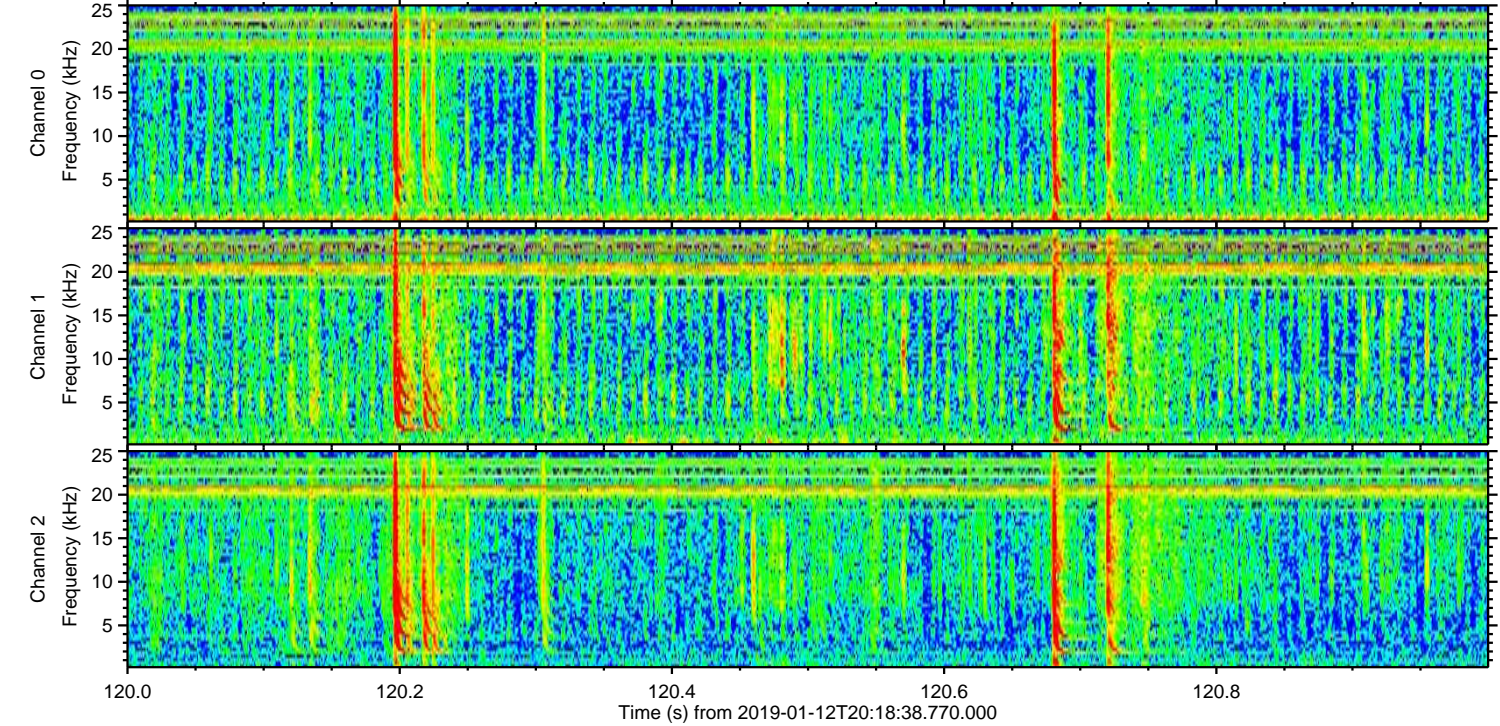
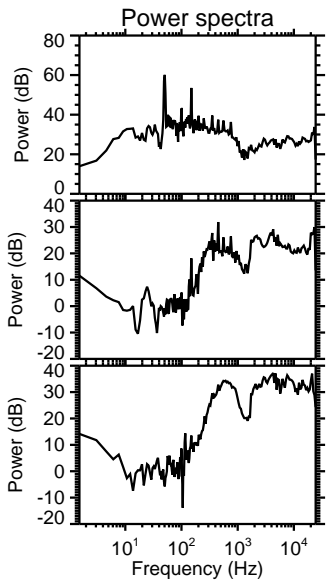
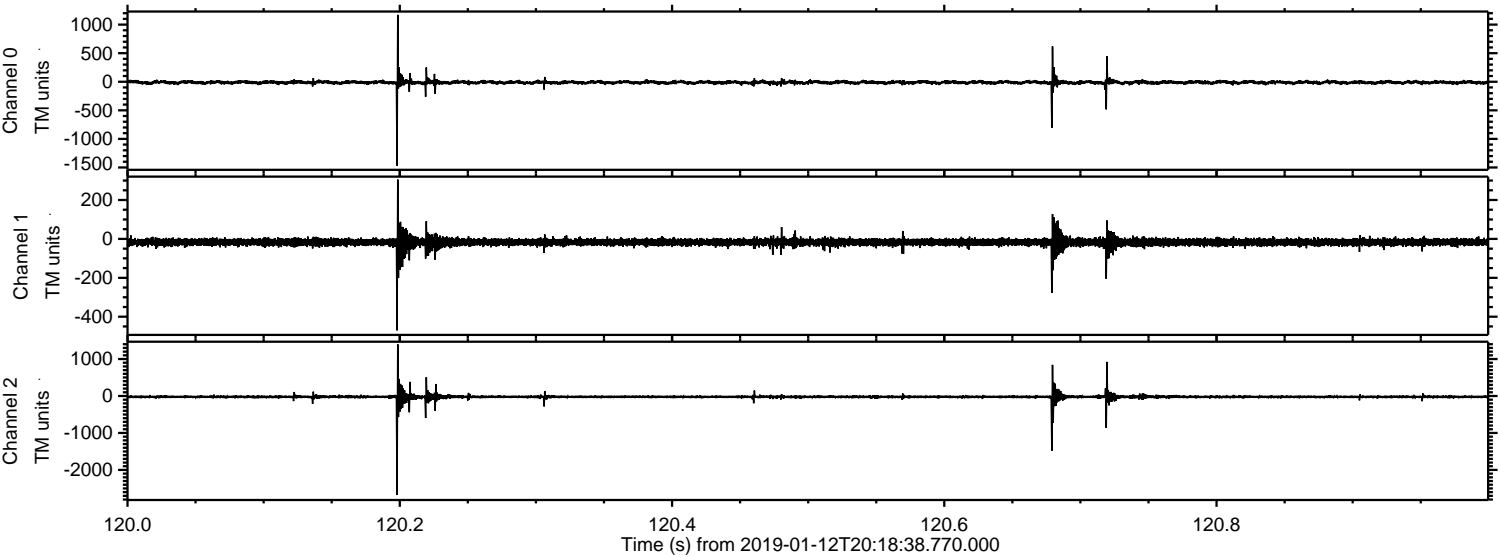
ELMAVAN 3D WAVEFORMS (Measured data sampled at 50 kHz) 51000 packets of 144 samples from 2019-01-12T20:18:38.770.000. Part 42/147

Processed Sat Jan 12 21:26:13 2019 by ELM ver.2012-10-06 from 001__elm20190112_201837__dat00.bin



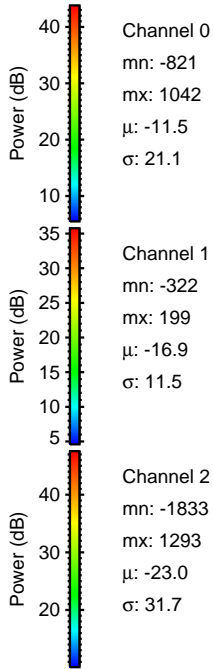
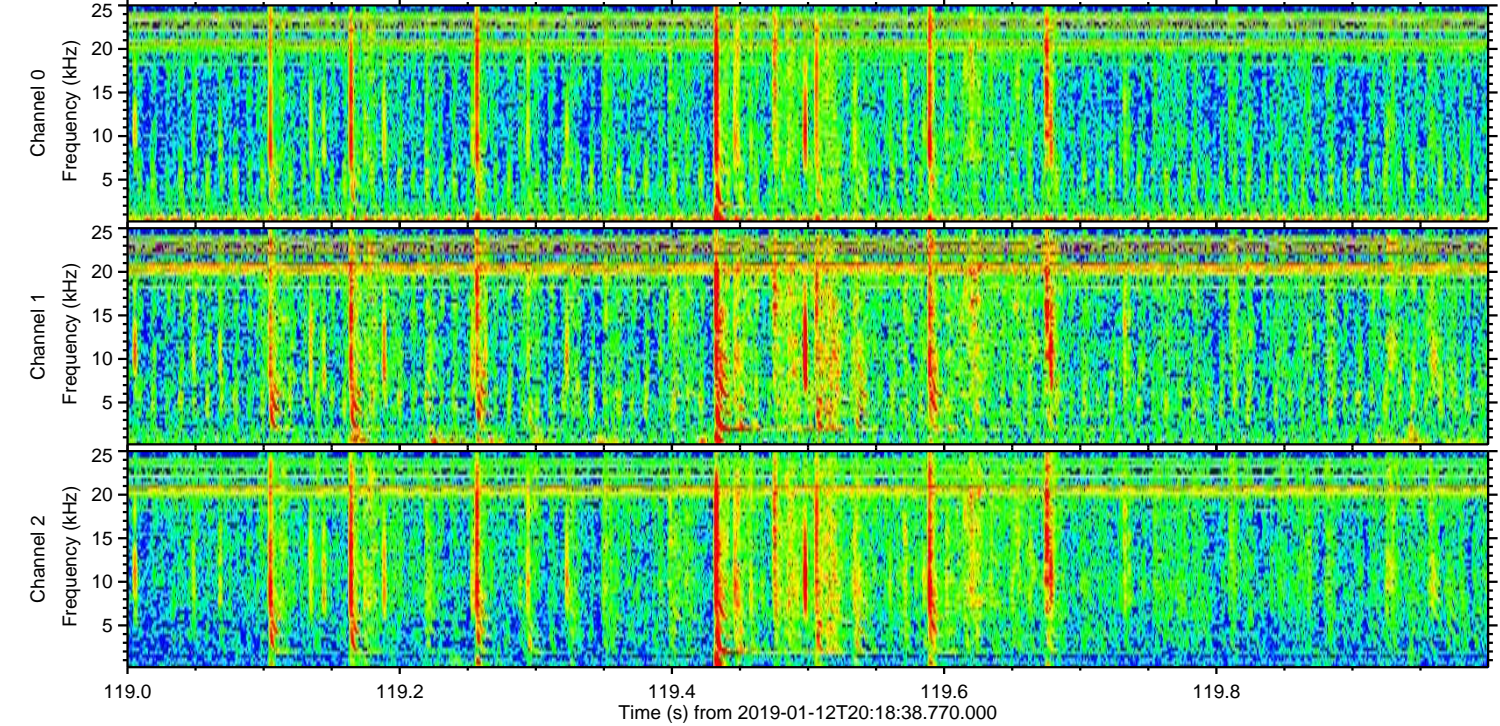
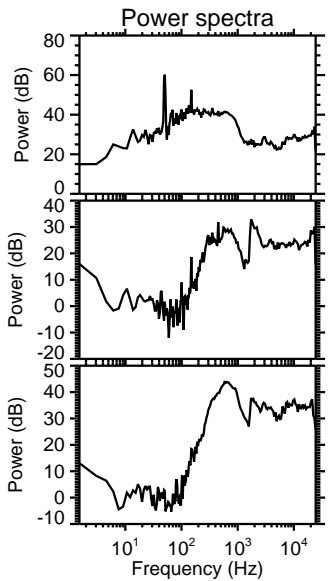
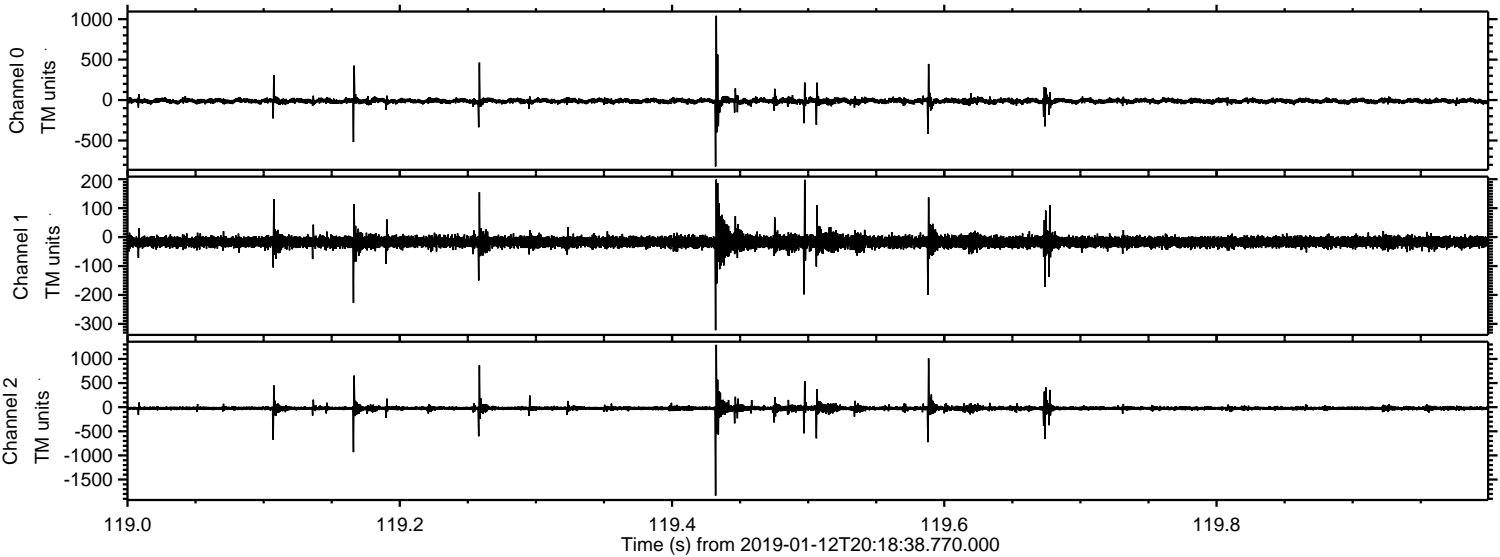
ELMAVAN 3D WAVEFORMS (Measured data sampled at 50 kHz) 51000 packets of 144 samples from 2019-01-12T20:18:38.770.000. Part 121/147

Processed Sat Jan 12 21:26:14 2019 by ELM ver.2012-10-06 from 001__elm20190112_201837__dat00.bin



ELMAVAN 3D WAVEFORMS (Measured data sampled at 50 kHz) 51000 packets of 144 samples from 2019-01-12T20:18:38.770.000. Part 120/147

Processed Sat Jan 12 21:26:14 2019 by ELM ver.2012-10-06 from 001__elm20190112_201837__dat00.bin

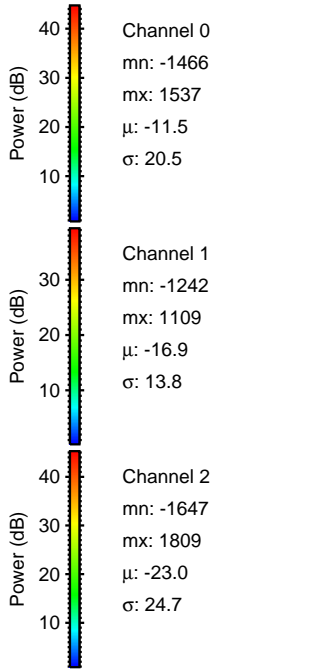
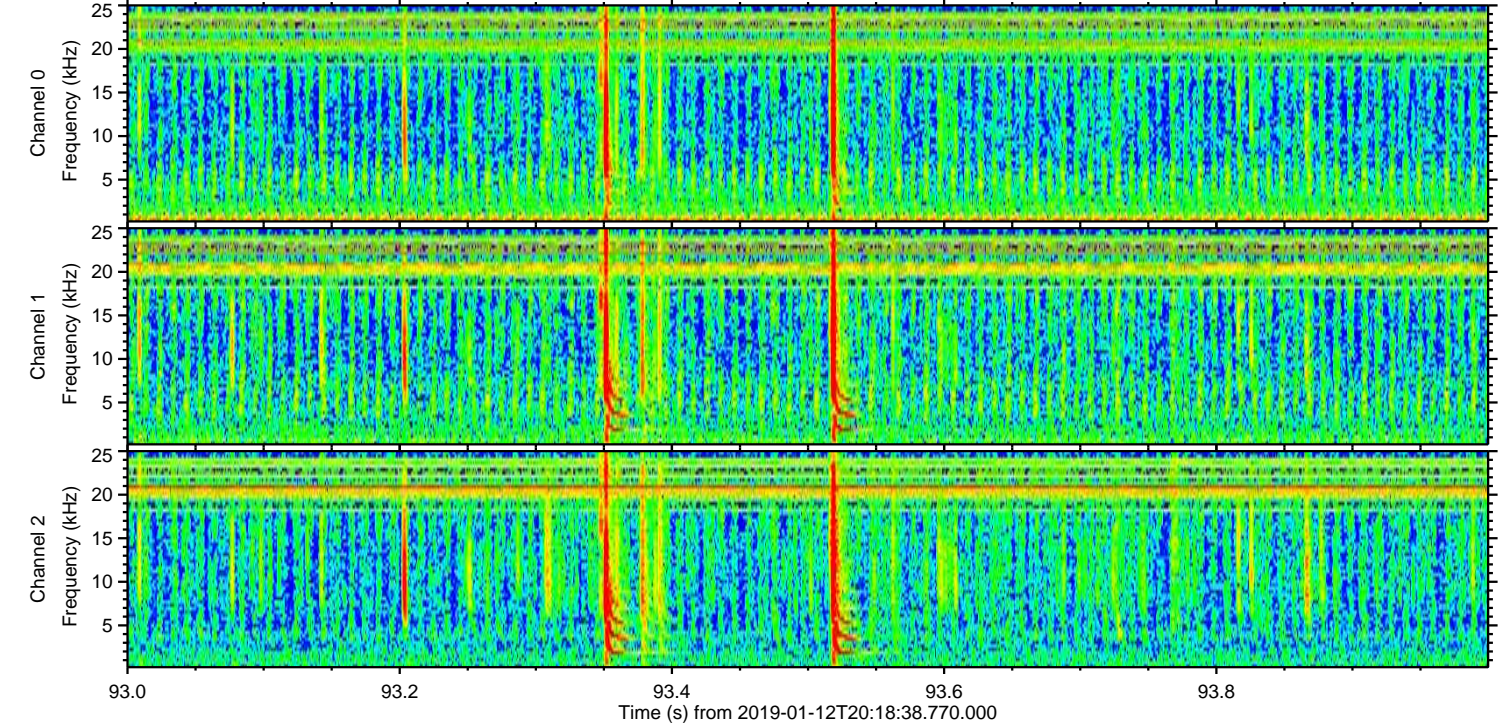
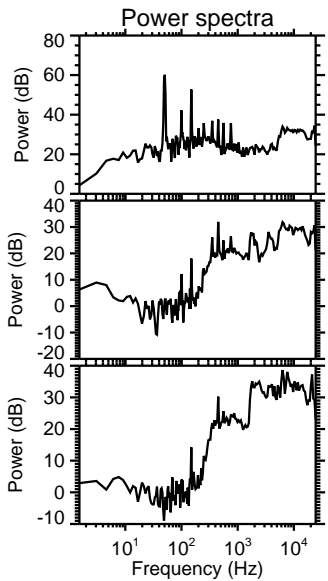
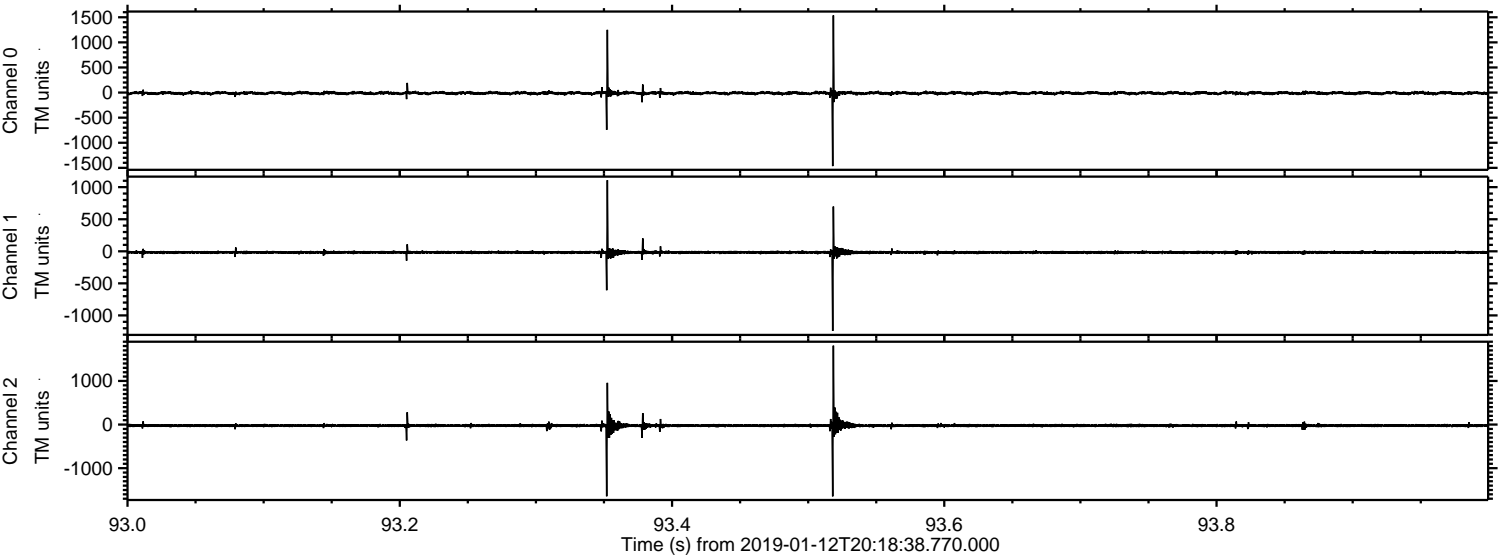


Channel 0
mn: -821
mx: 1042
 μ : -11.5
 σ : 21.1

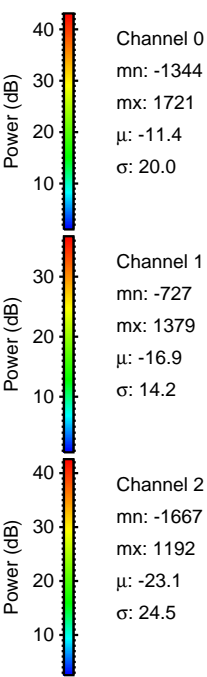
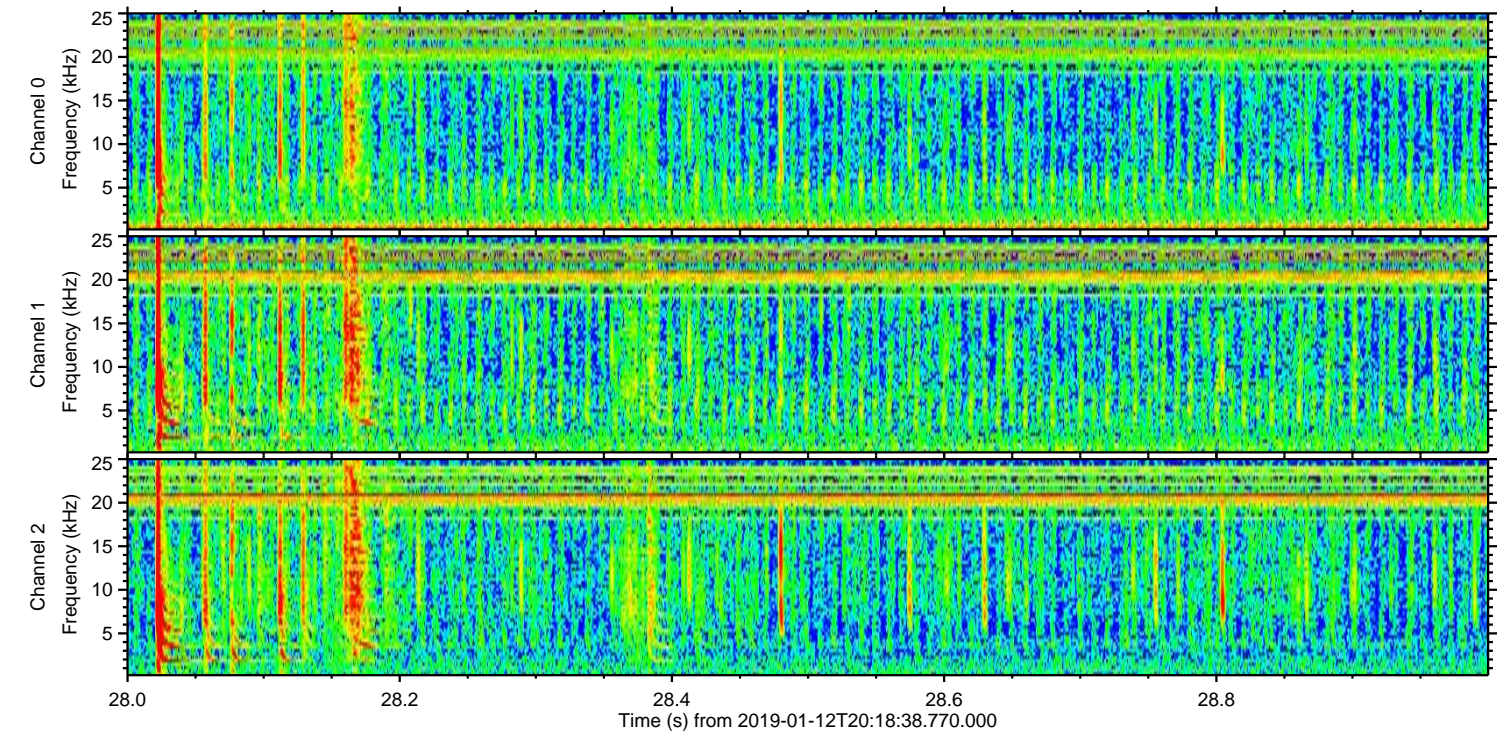
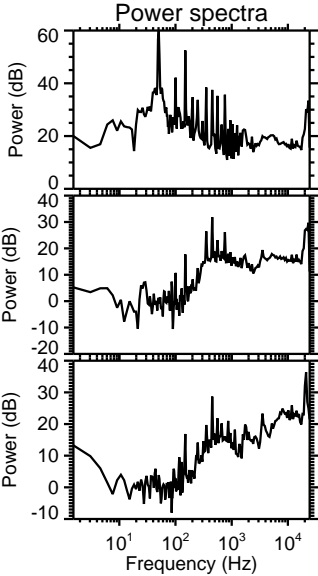
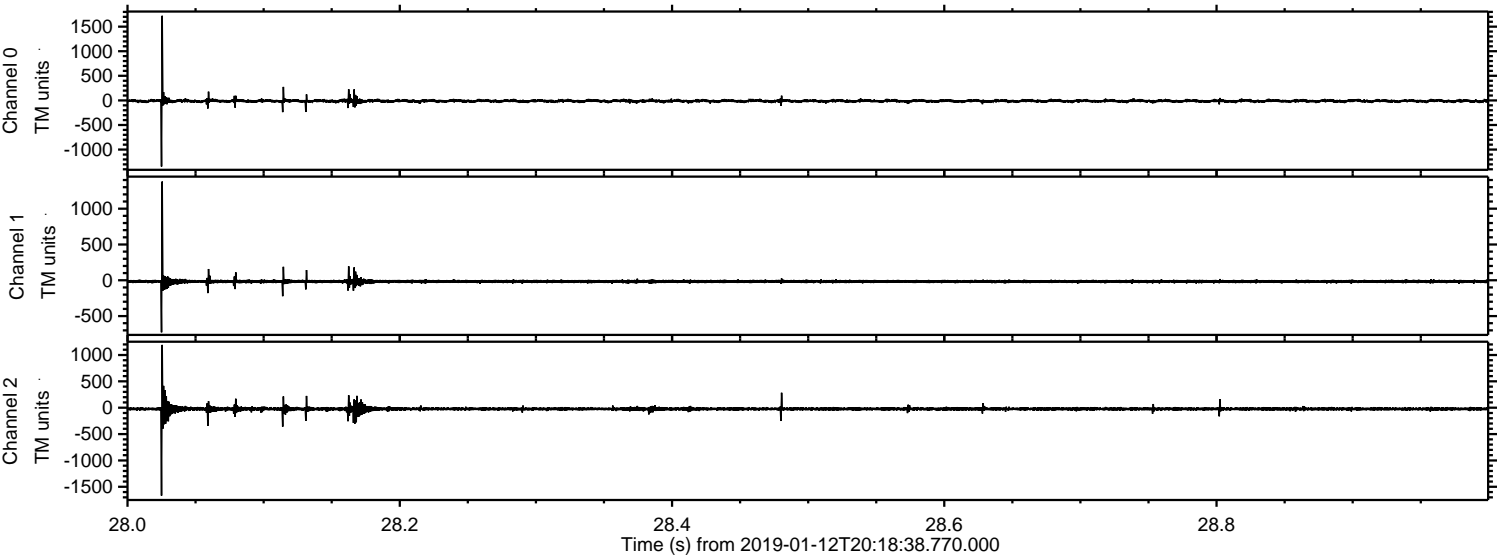
Channel 1
mn: -322
mx: 199
 μ : -16.9
 σ : 11.5

Channel 2
mn: -1833
mx: 1293
 μ : -23.0
 σ : 31.7

Processed Sat Jan 12 21:26:15 2019 by ELM ver.2012-10-06 from 001__elm20190112_201837__dat00.bin



Processed Sat Jan 12 21:26:15 2019 by ELM ver.2012-10-06 from 001__elm20190112_201837__dat00.bin



Processed Sat Jan 12 21:26:16 2019 by ELM ver.2012-10-06 from 001__elm20190112_201837__dat00.bin

