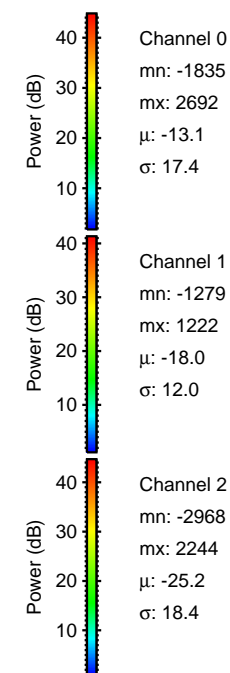
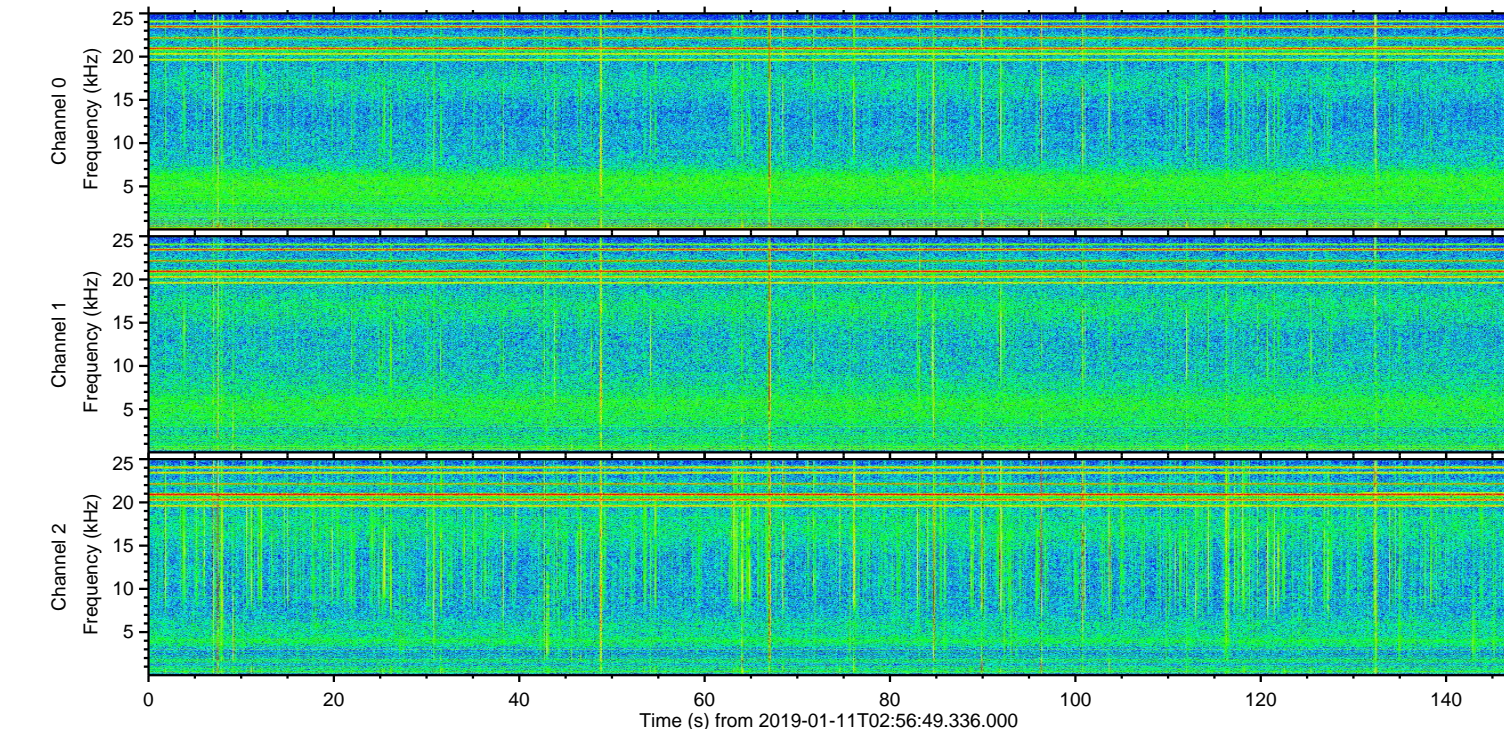
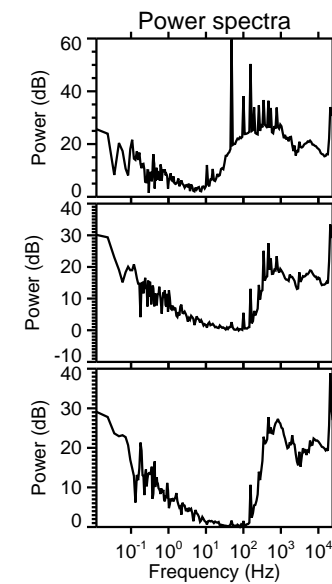
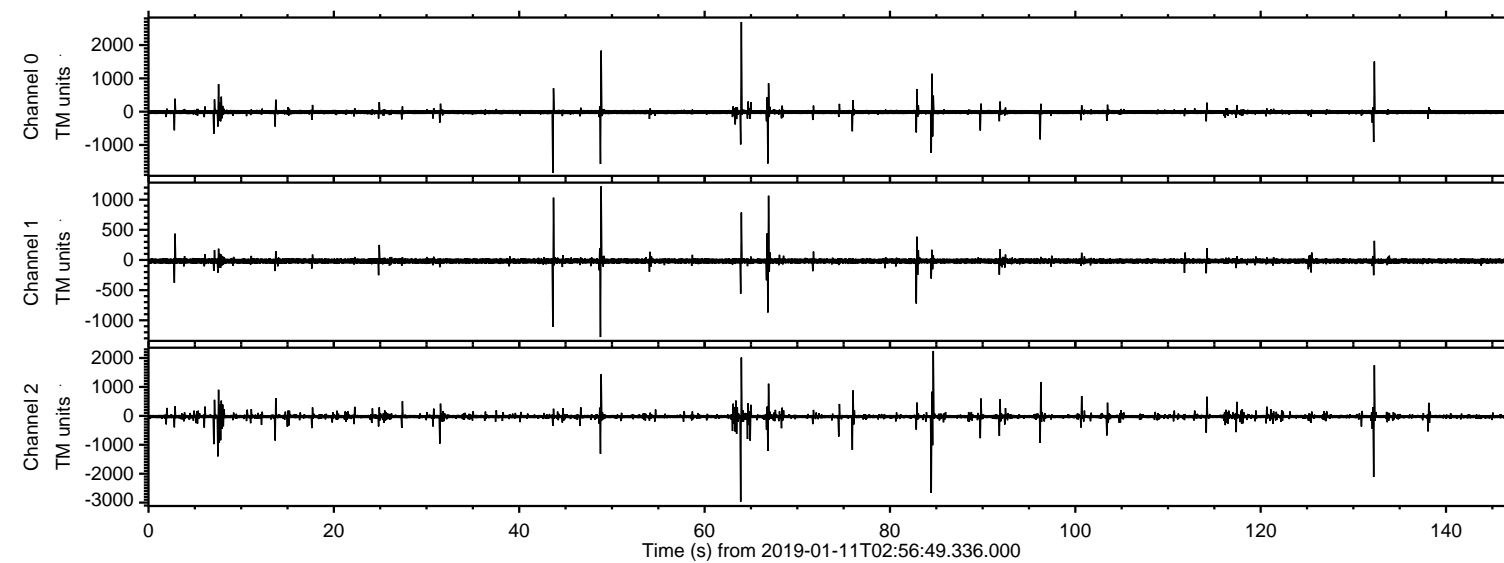


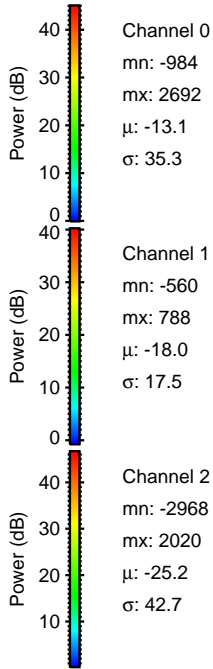
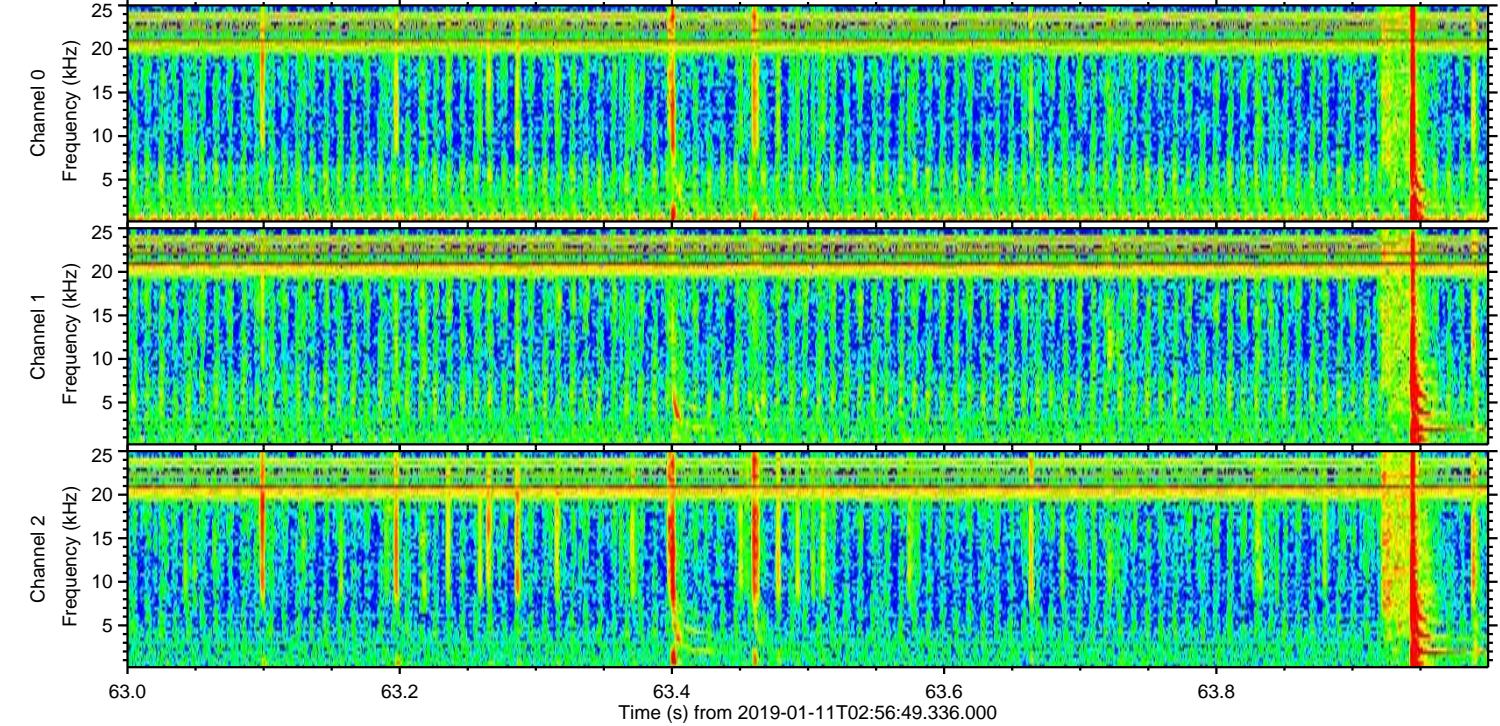
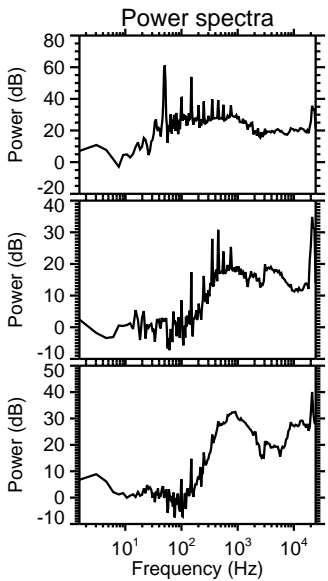
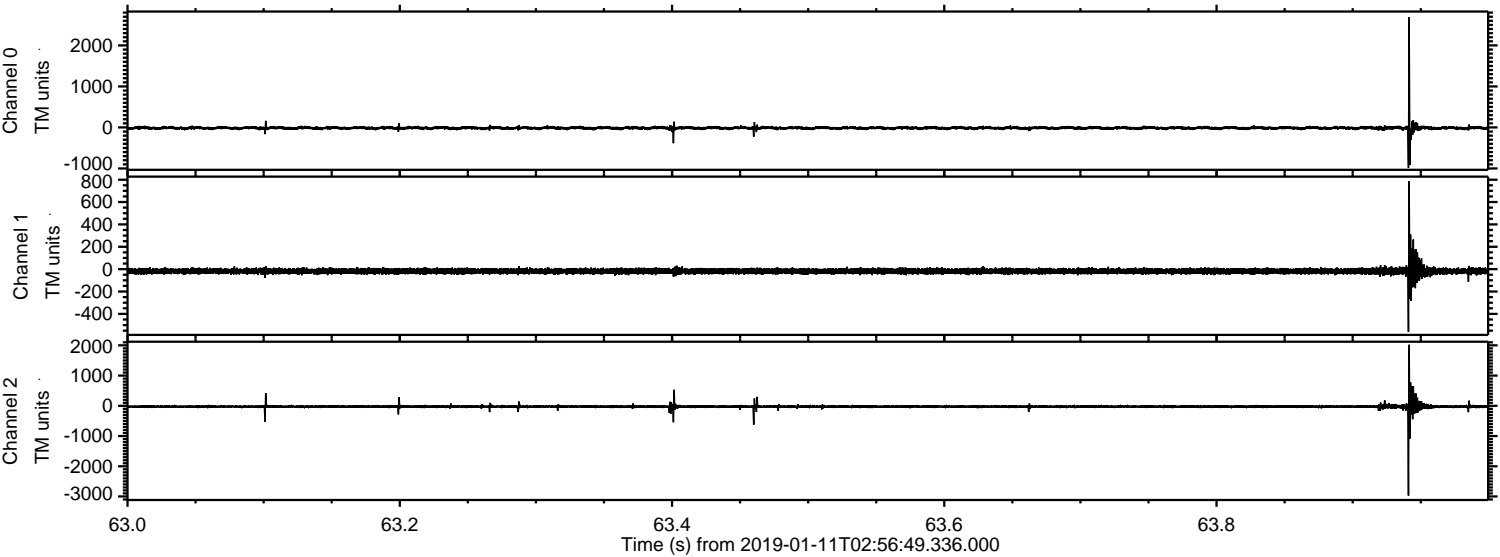
# ELMAVAN 3D WAVEFORMS (Measured data sampled at 50 kHz) 51000 packets of 144 samples from 2019-01-11T02:56:49.336.000.

Processed Fri Jan 11 04:04:37 2019 by ELM ver.2012-10-06 from 001\_\_elm20190111\_025648\_\_dat00.bin



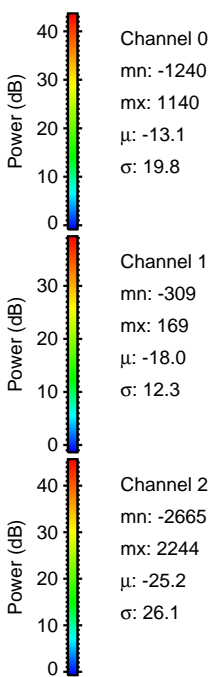
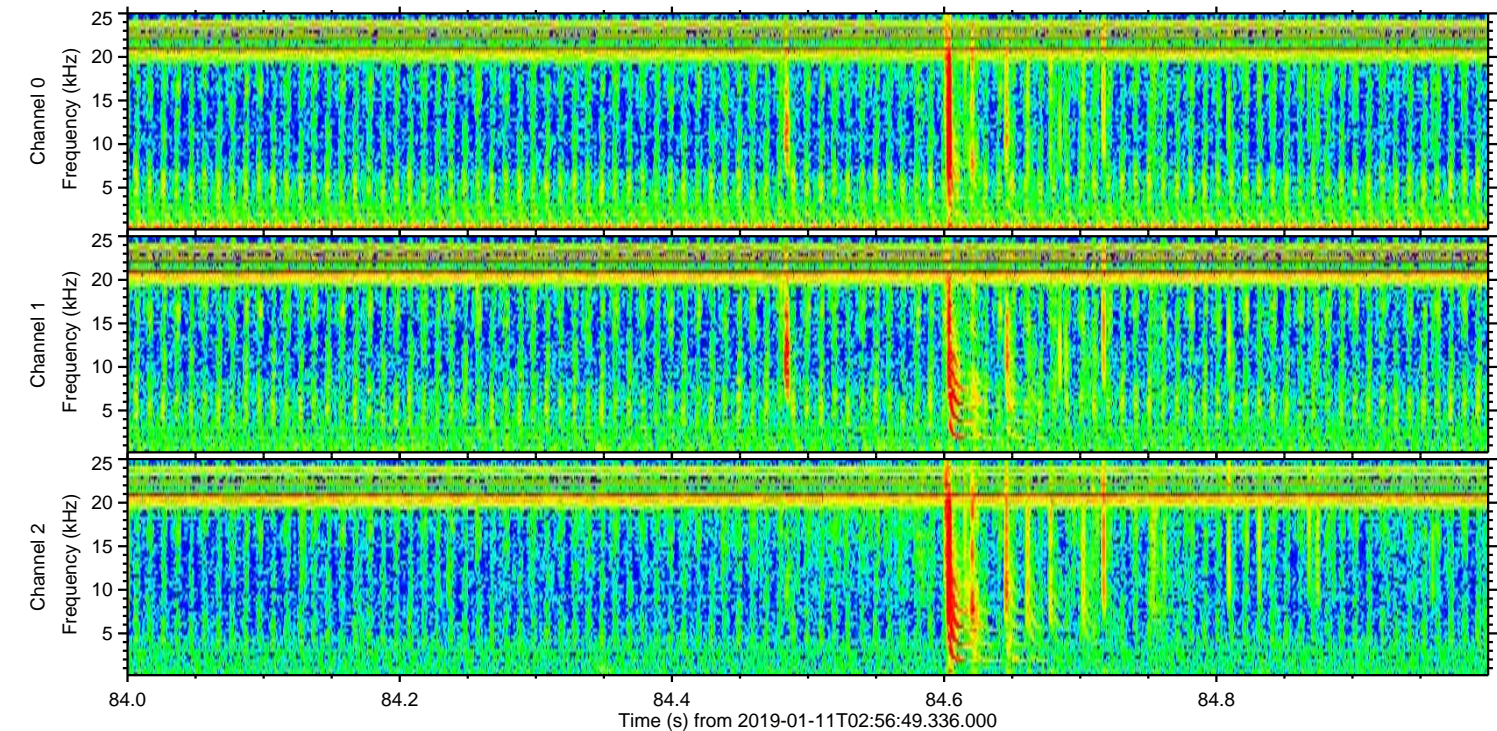
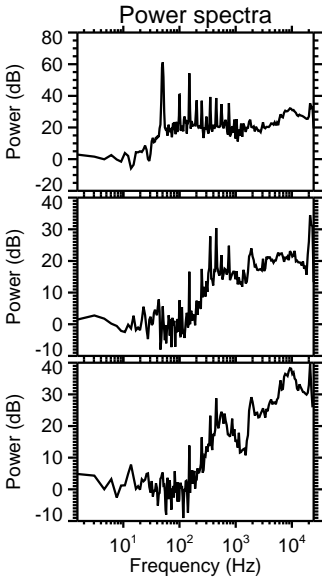
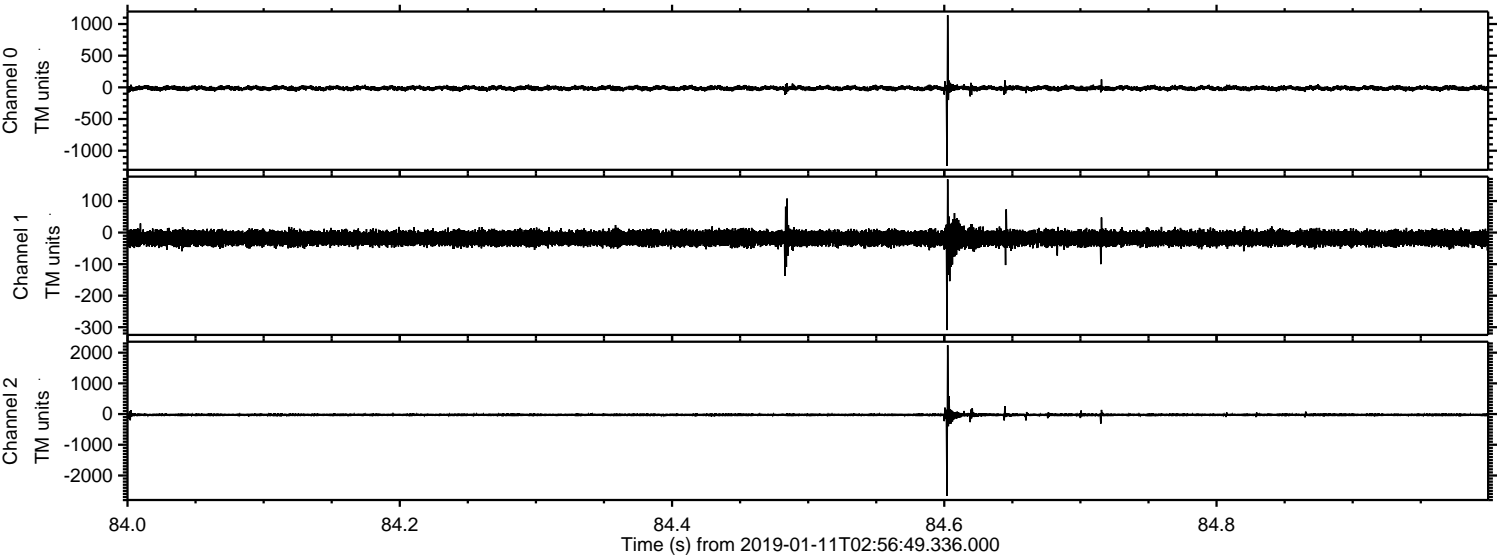


Processed Fri Jan 11 04:04:43 2019 by ELM ver.2012-10-06 from 001\_\_elm20190111\_025648\_\_dat00.bin





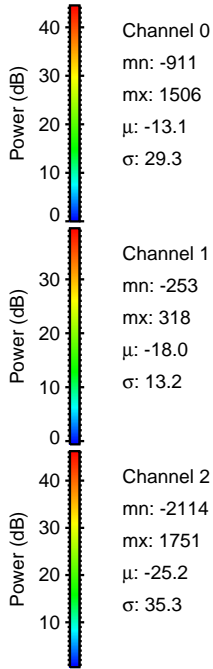
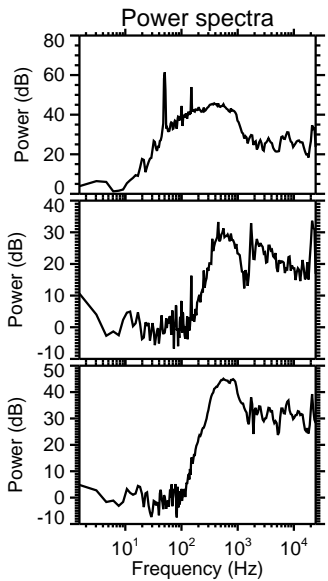
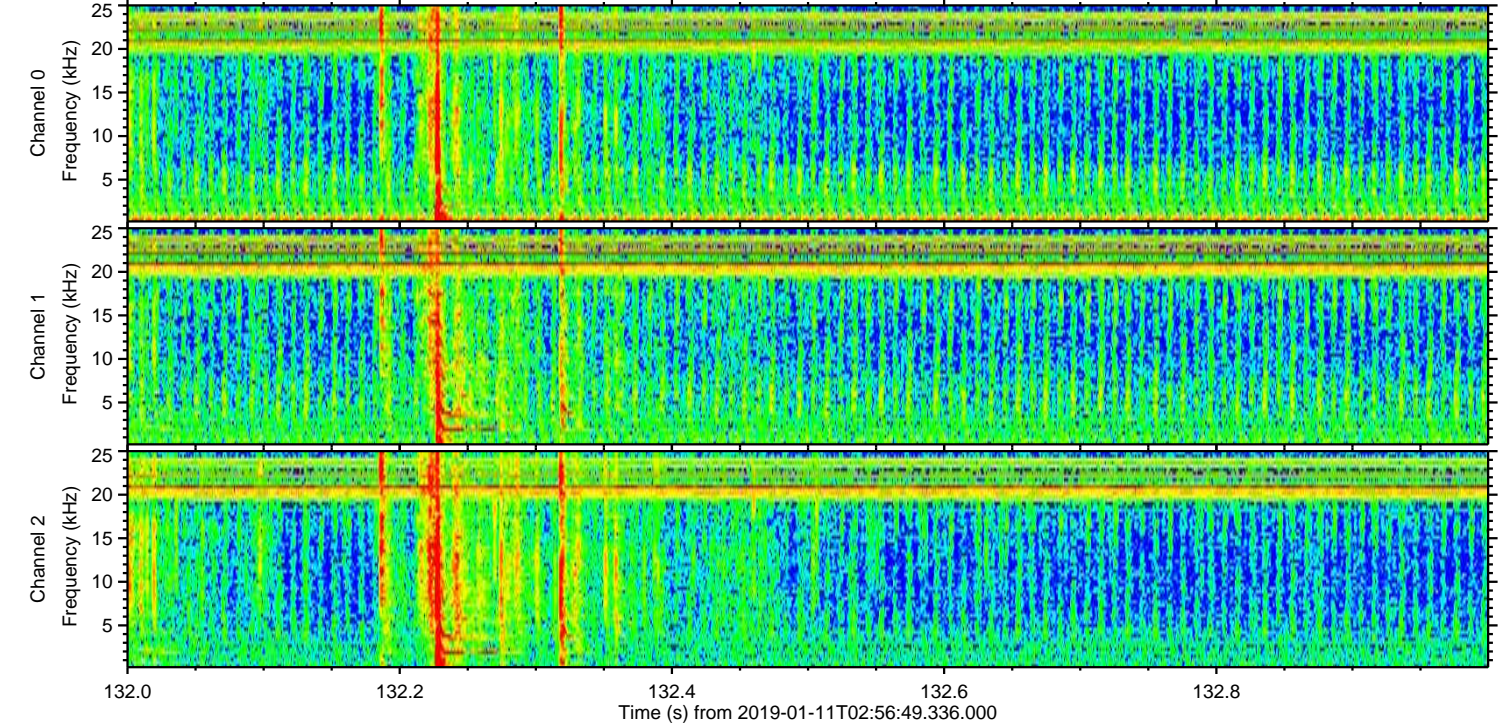
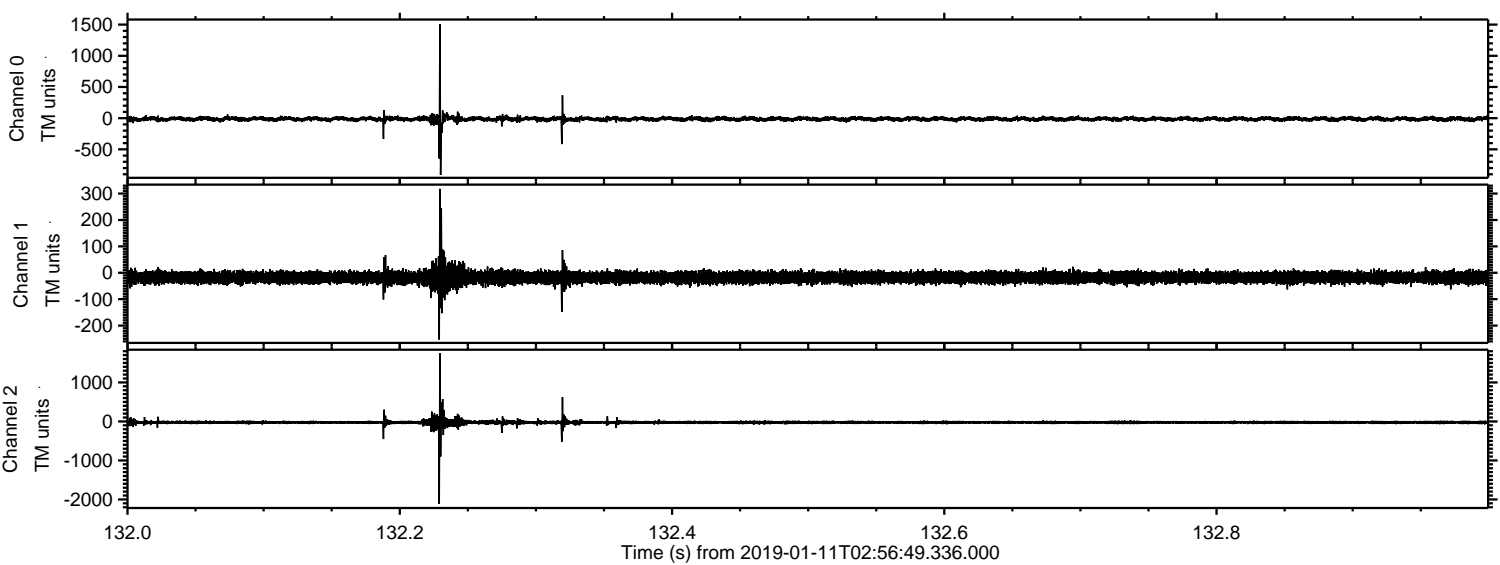
Processed Fri Jan 11 04:04:44 2019 by ELM ver.2012-10-06 from 001\_\_elm20190111\_025648\_\_dat00.bin





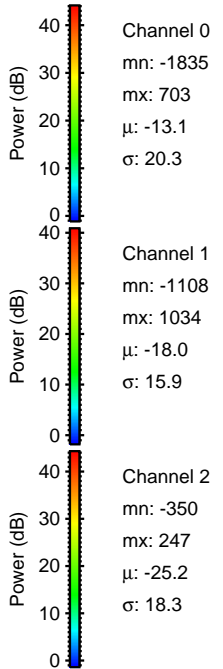
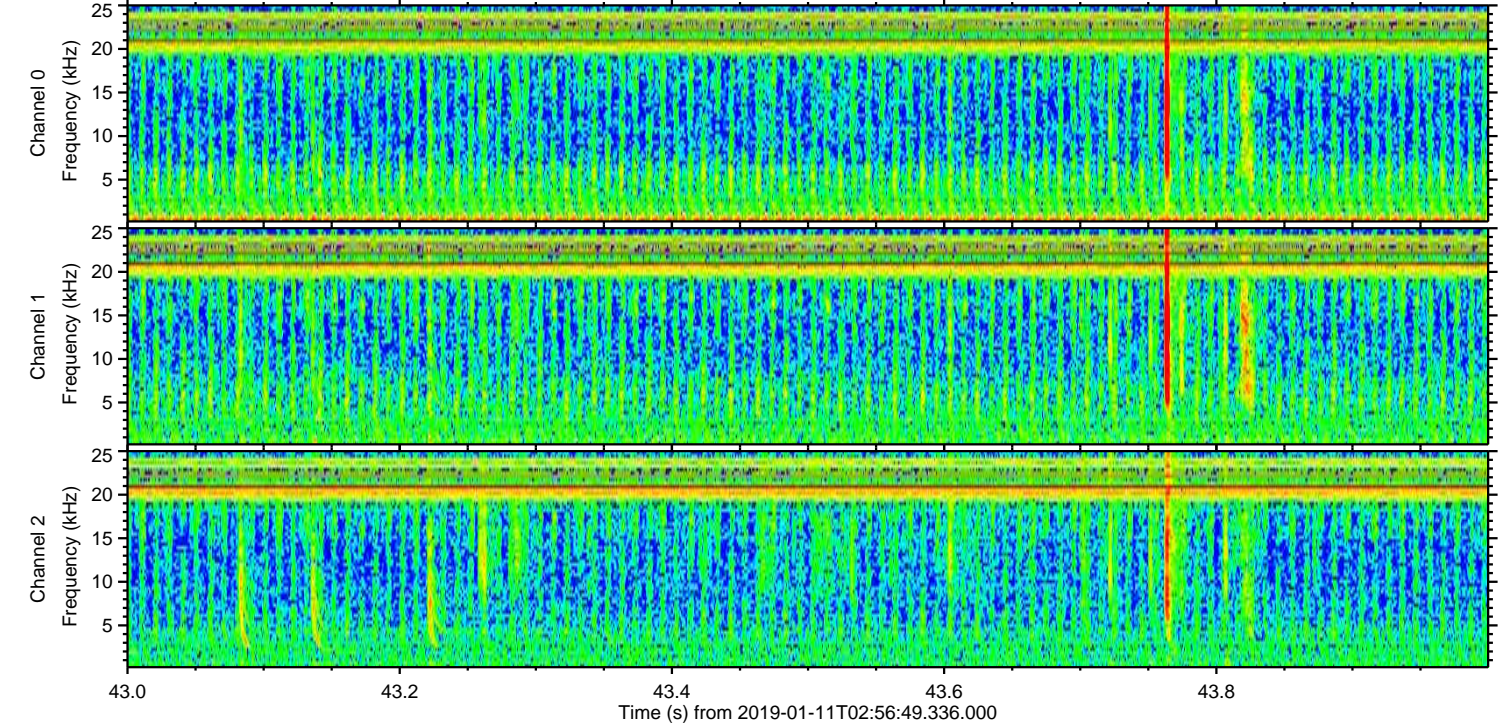
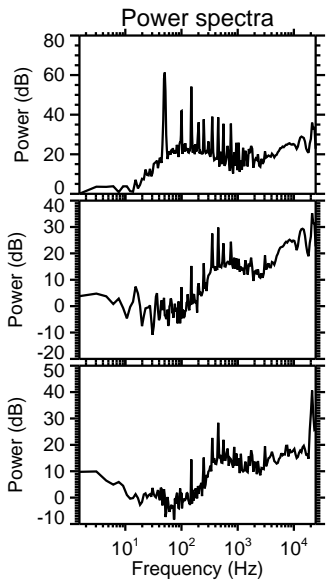
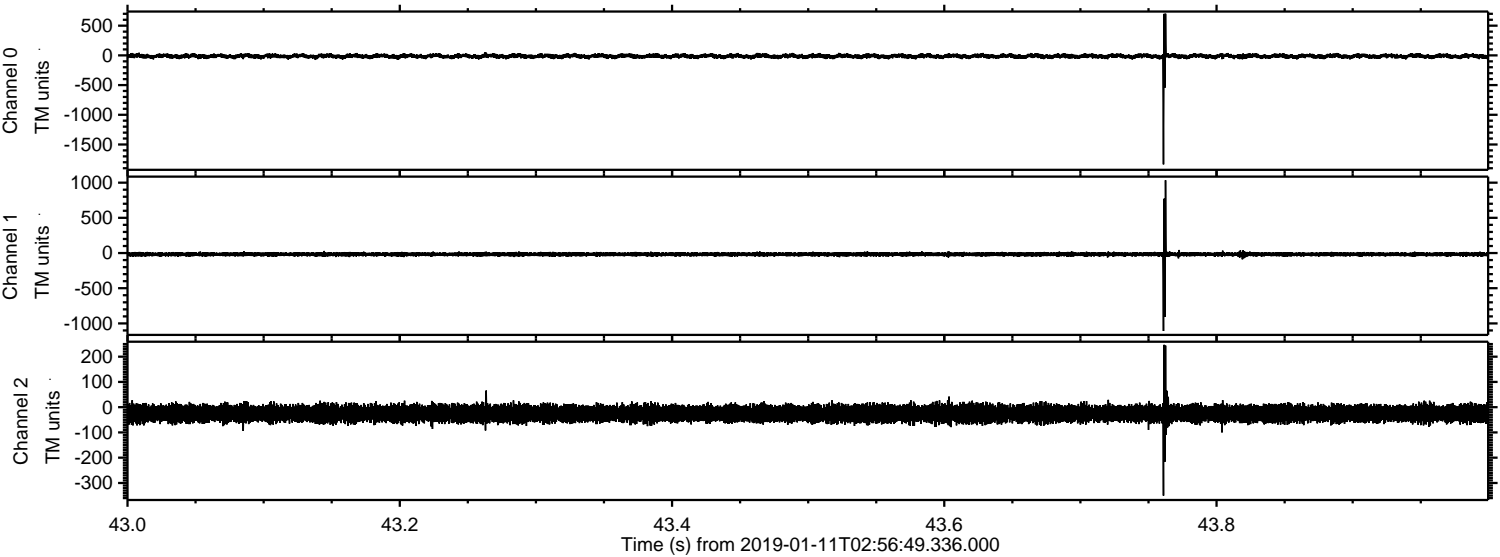
ELMAVAN 3D WAVEFORMS (Measured data sampled at 50 kHz) 51000 packets of 144 samples from 2019-01-11T02:56:49.336.000. Part 133/147

Processed Fri Jan 11 04:04:45 2019 by ELM ver.2012-10-06 from 001\_\_elm20190111\_025648\_\_dat00.bin



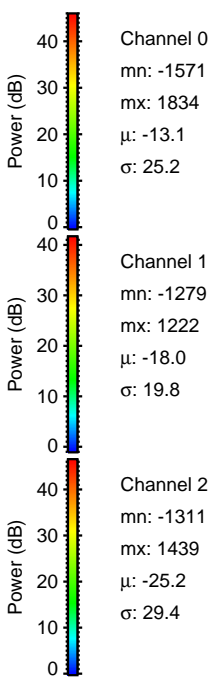
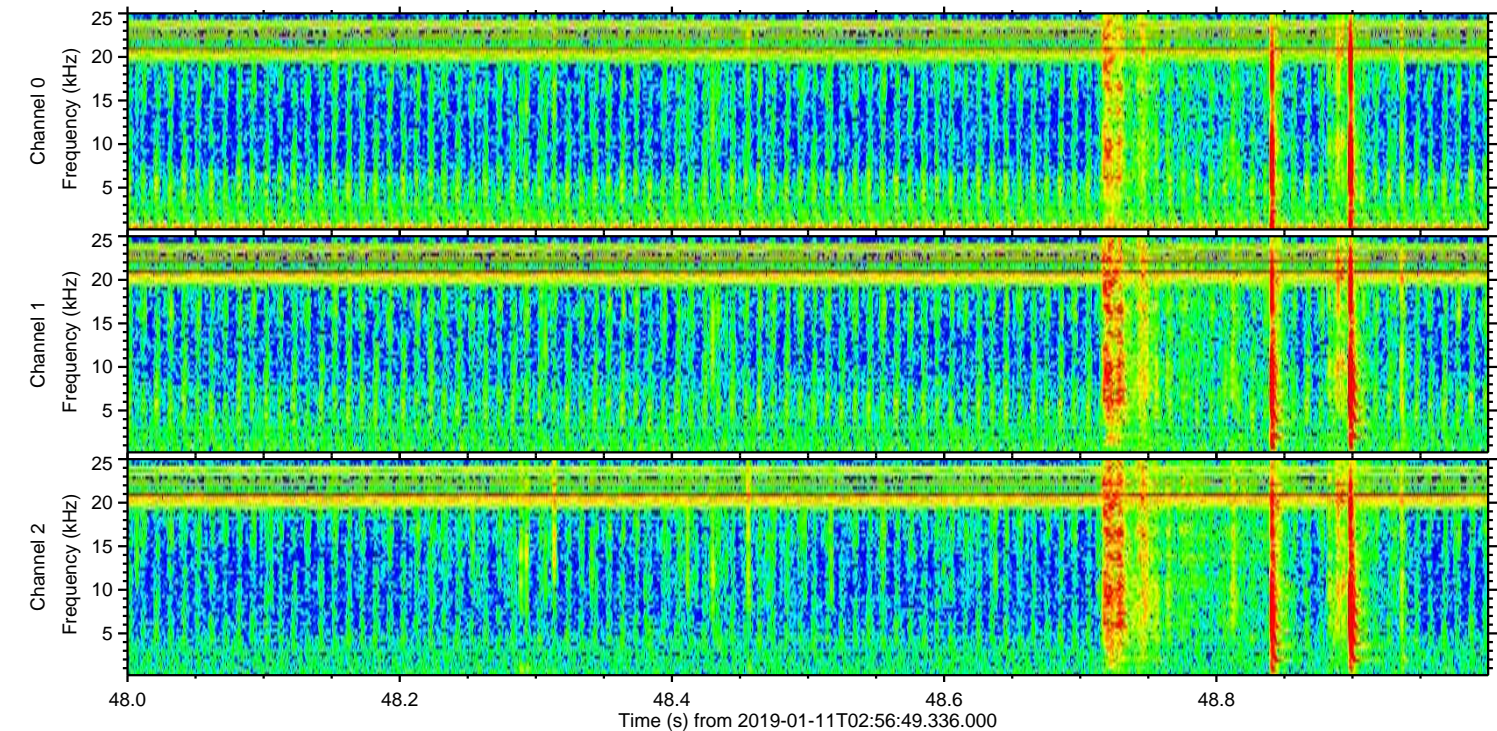
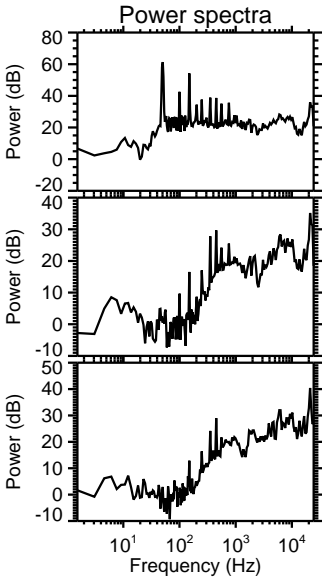
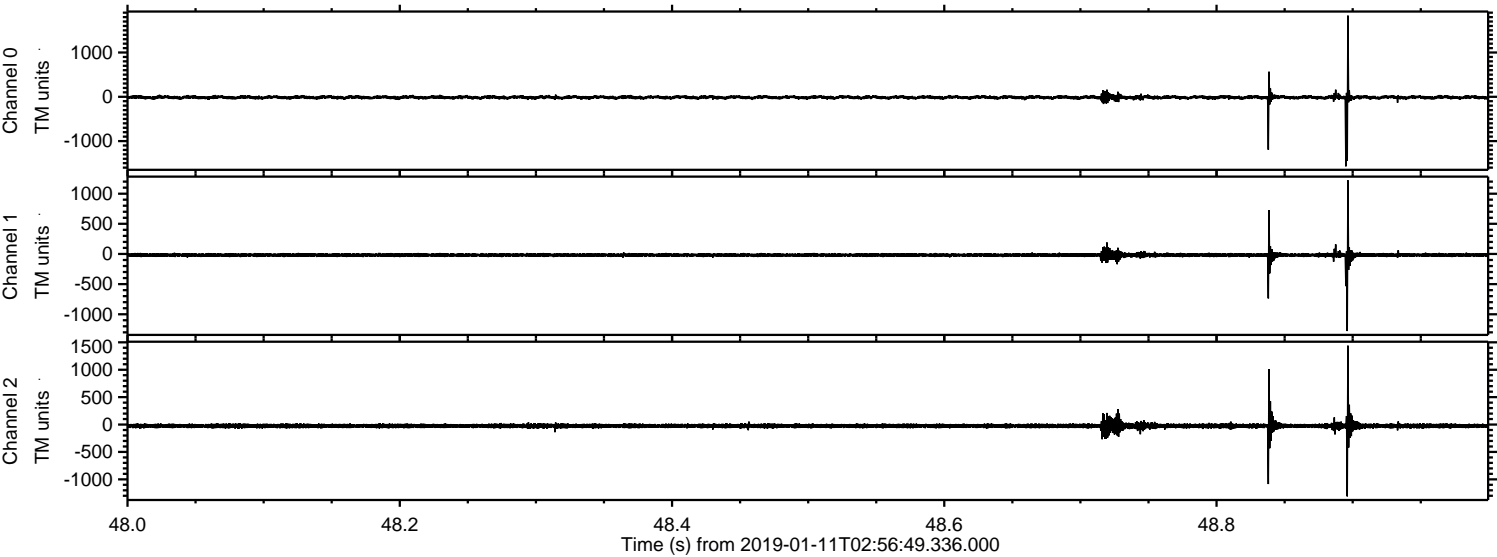


Processed Fri Jan 11 04:04:45 2019 by ELM ver.2012-10-06 from 001\_\_elm20190111\_025648\_\_dat00.bin





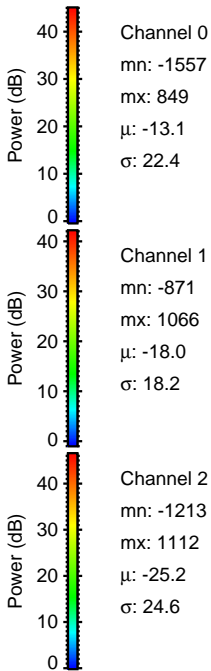
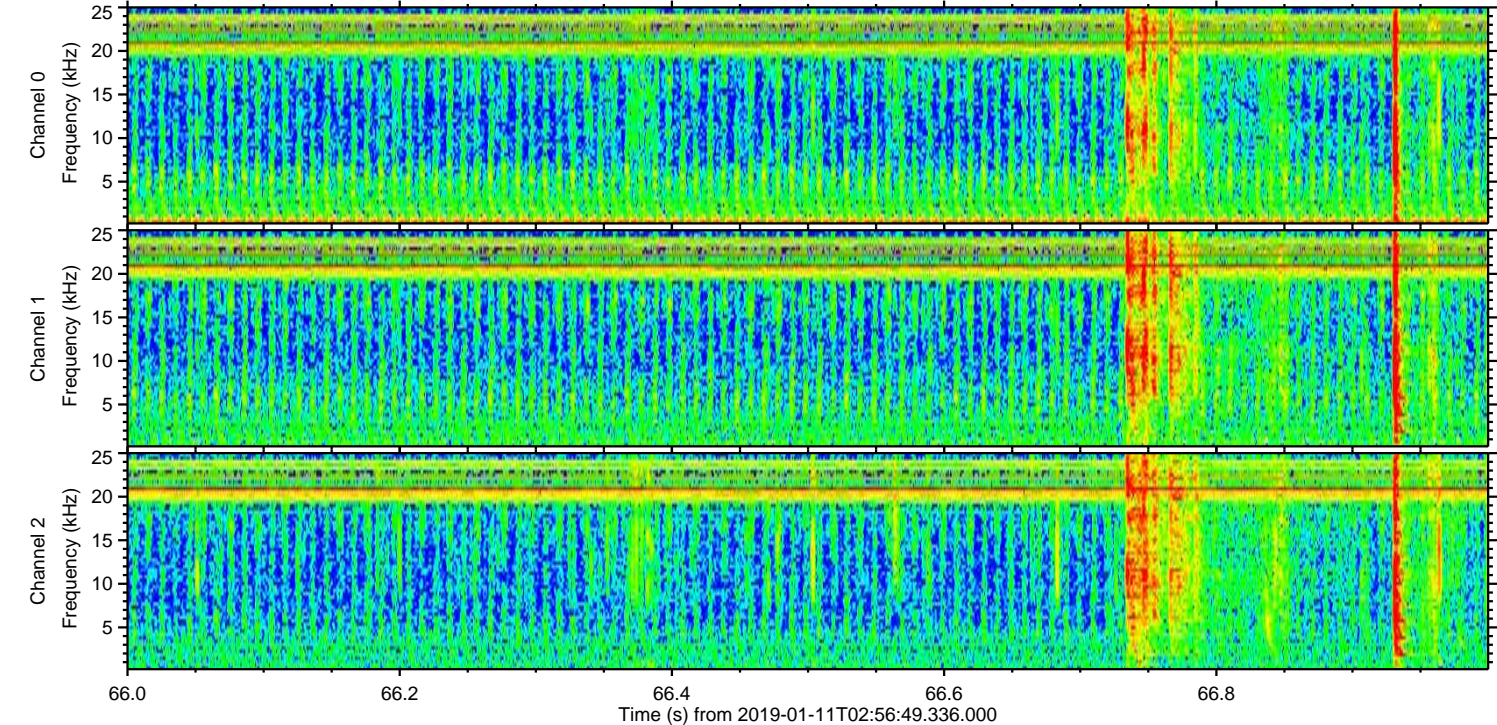
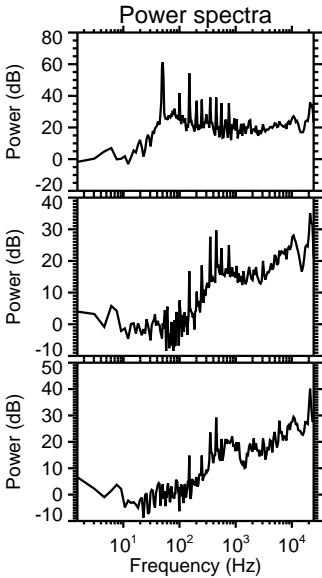
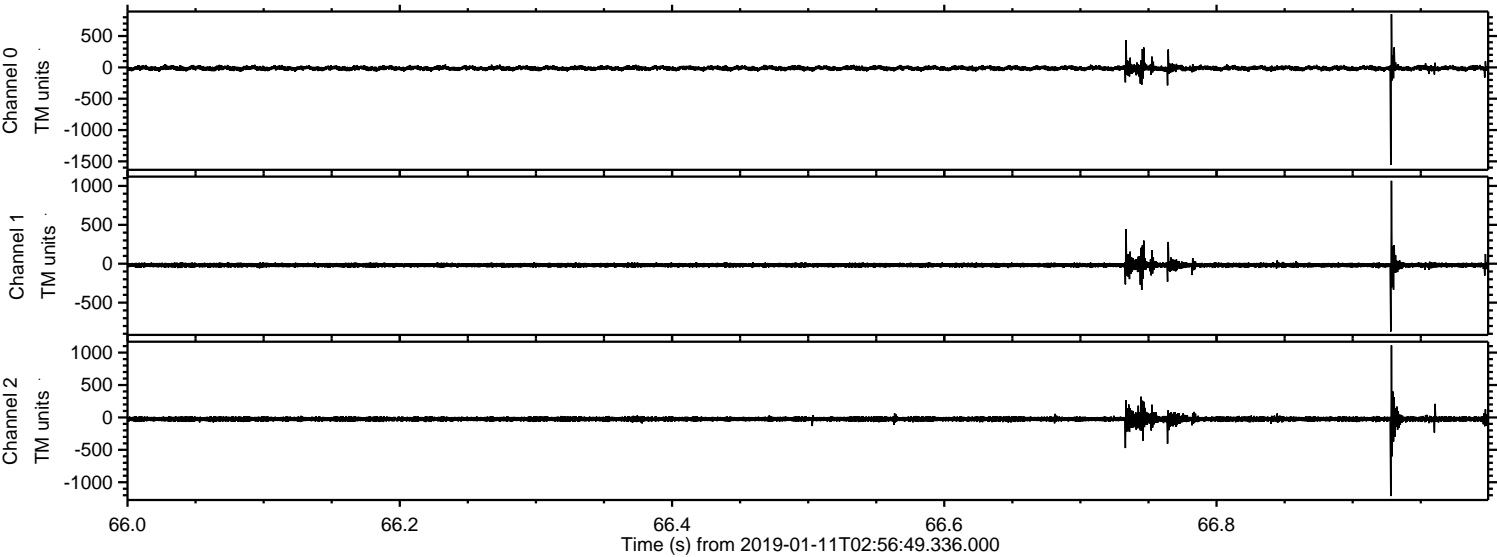
Processed Fri Jan 11 04:04:46 2019 by ELM ver.2012-10-06 from 001\_\_elm20190111\_025648\_\_dat00.bin





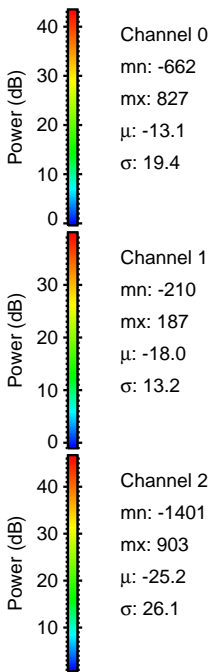
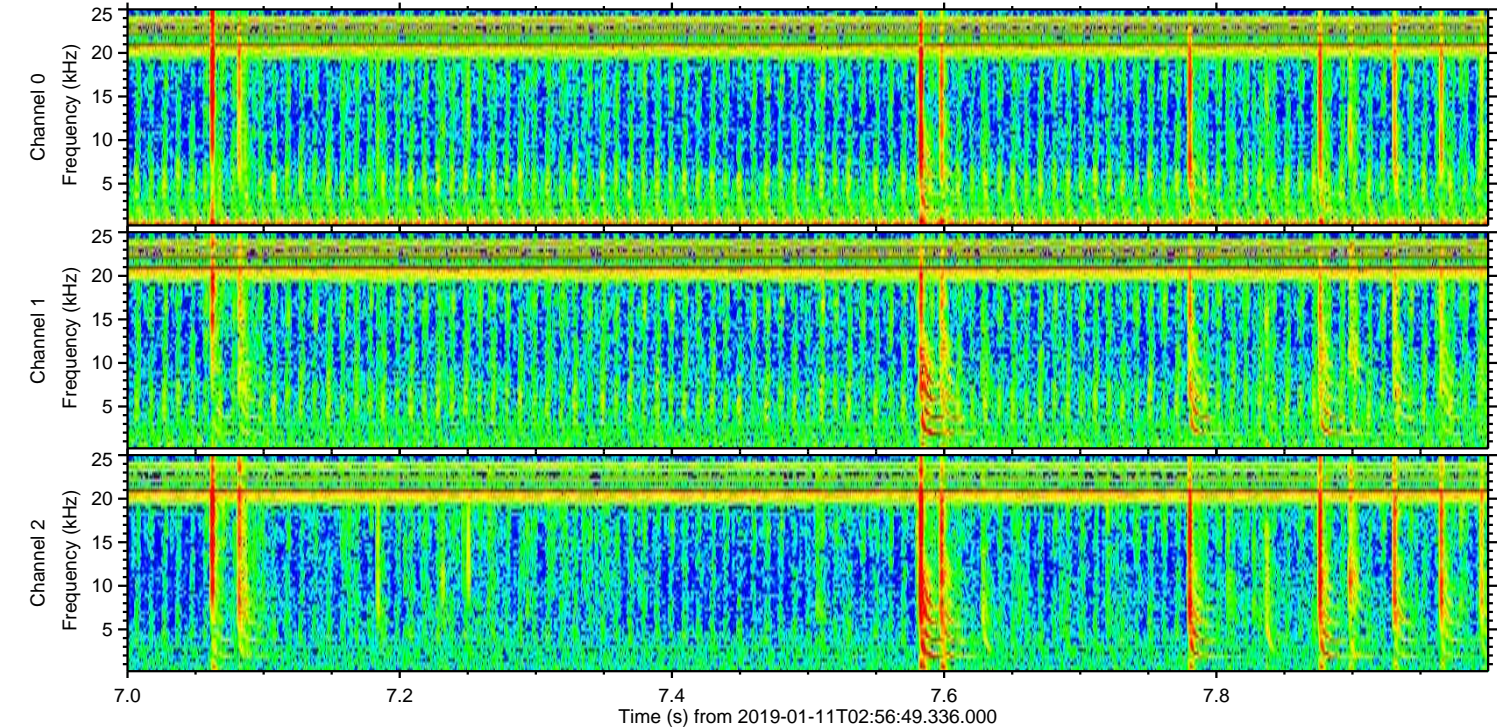
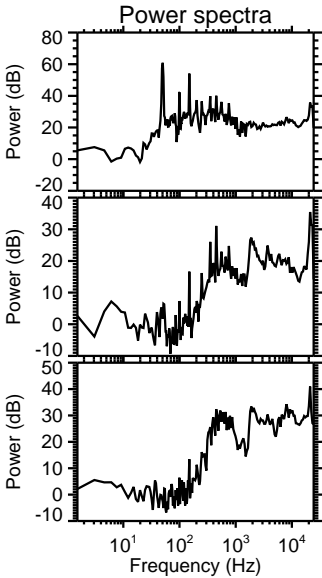
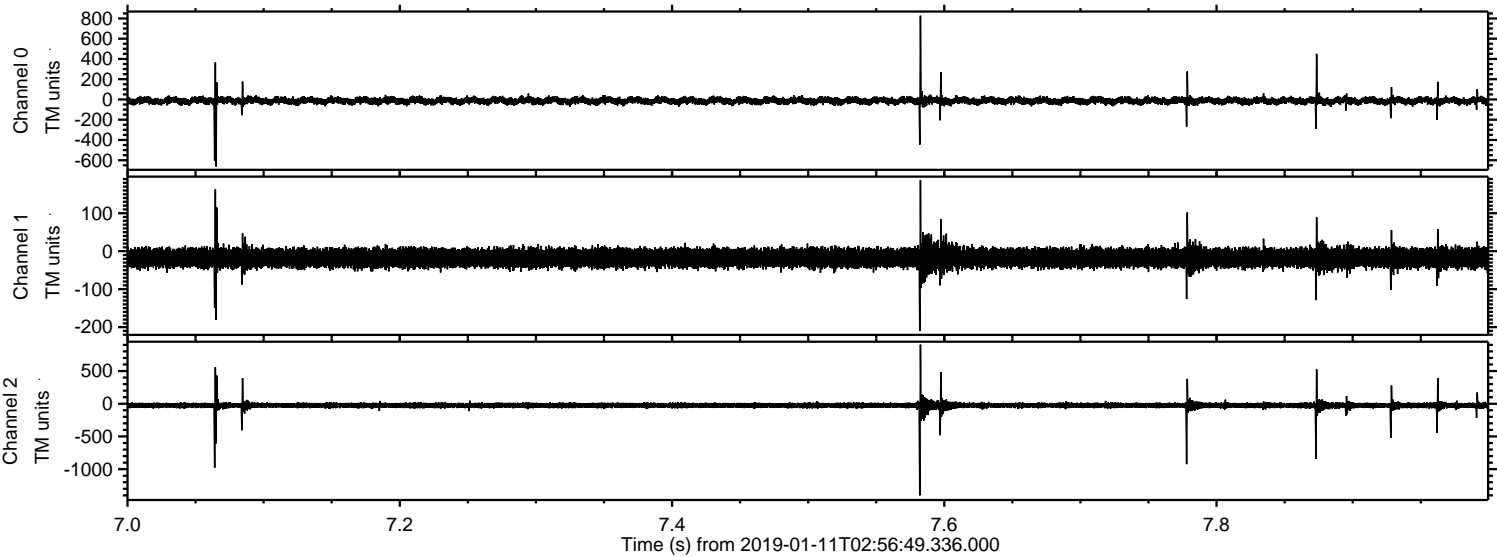
ELMAVAN 3D WAVEFORMS (Measured data sampled at 50 kHz) 51000 packets of 144 samples from 2019-01-11T02:56:49.336.000. Part 67/147

Processed Fri Jan 11 04:04:46 2019 by ELM ver.2012-10-06 from 001\_\_elm20190111\_025648\_\_dat00.bin



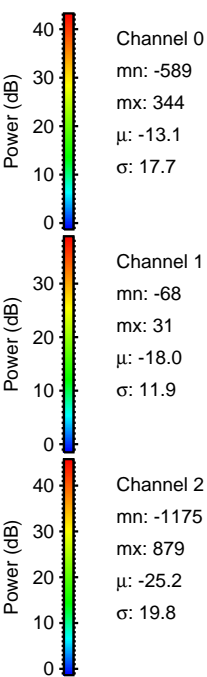
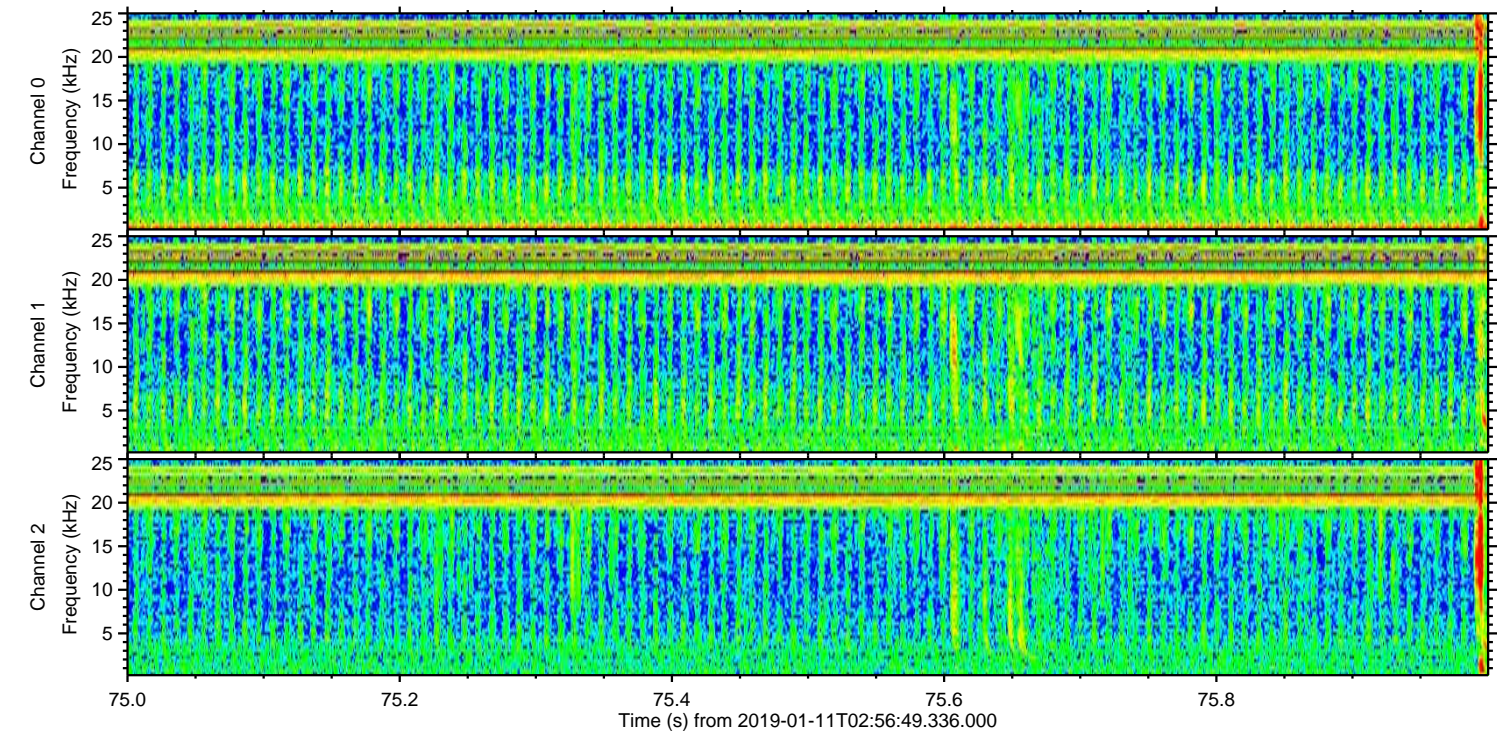
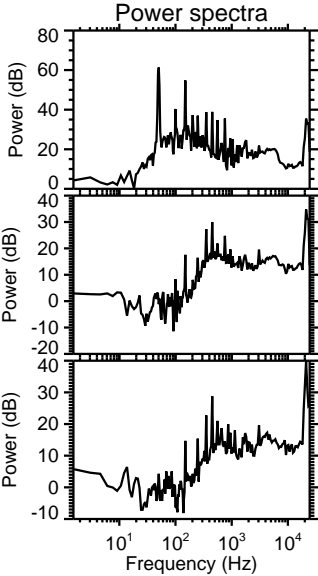
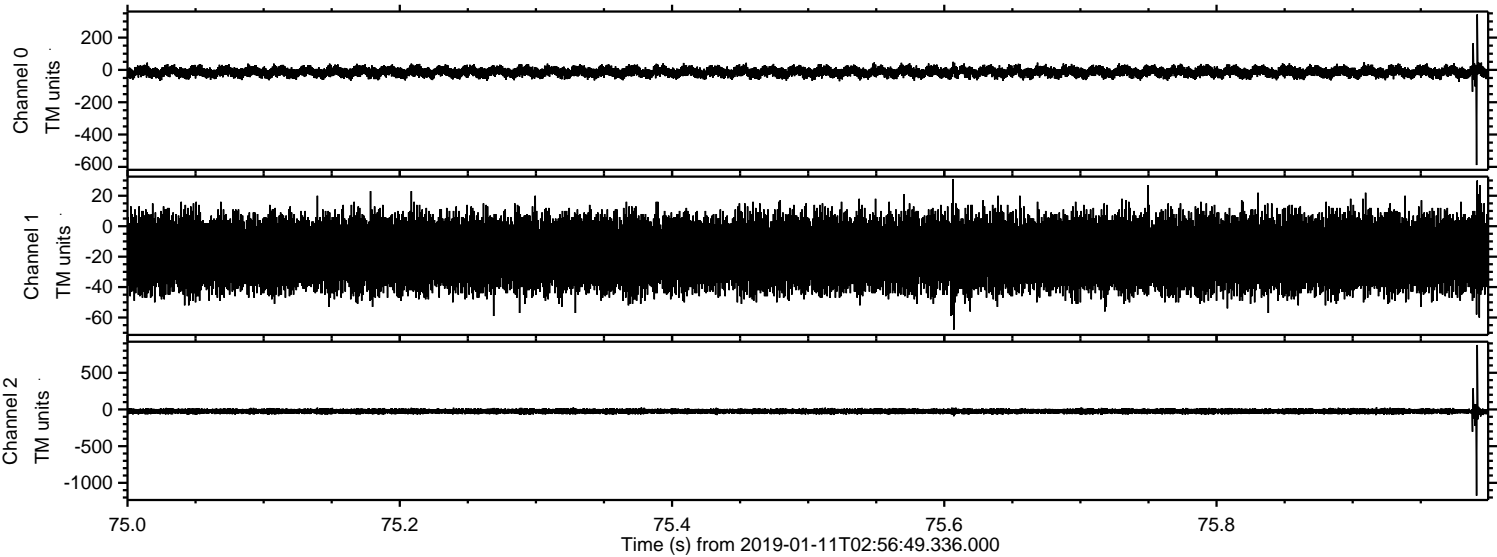


Processed Fri Jan 11 04:04:47 2019 by ELM ver.2012-10-06 from 001\_\_elm20190111\_025648\_\_dat00.bin





Processed Fri Jan 11 04:04:48 2019 by ELM ver.2012-10-06 from 001\_\_elm20190111\_025648\_\_dat00.bin



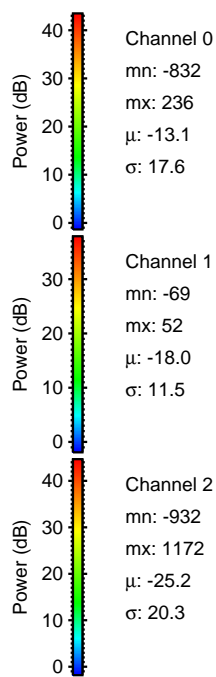
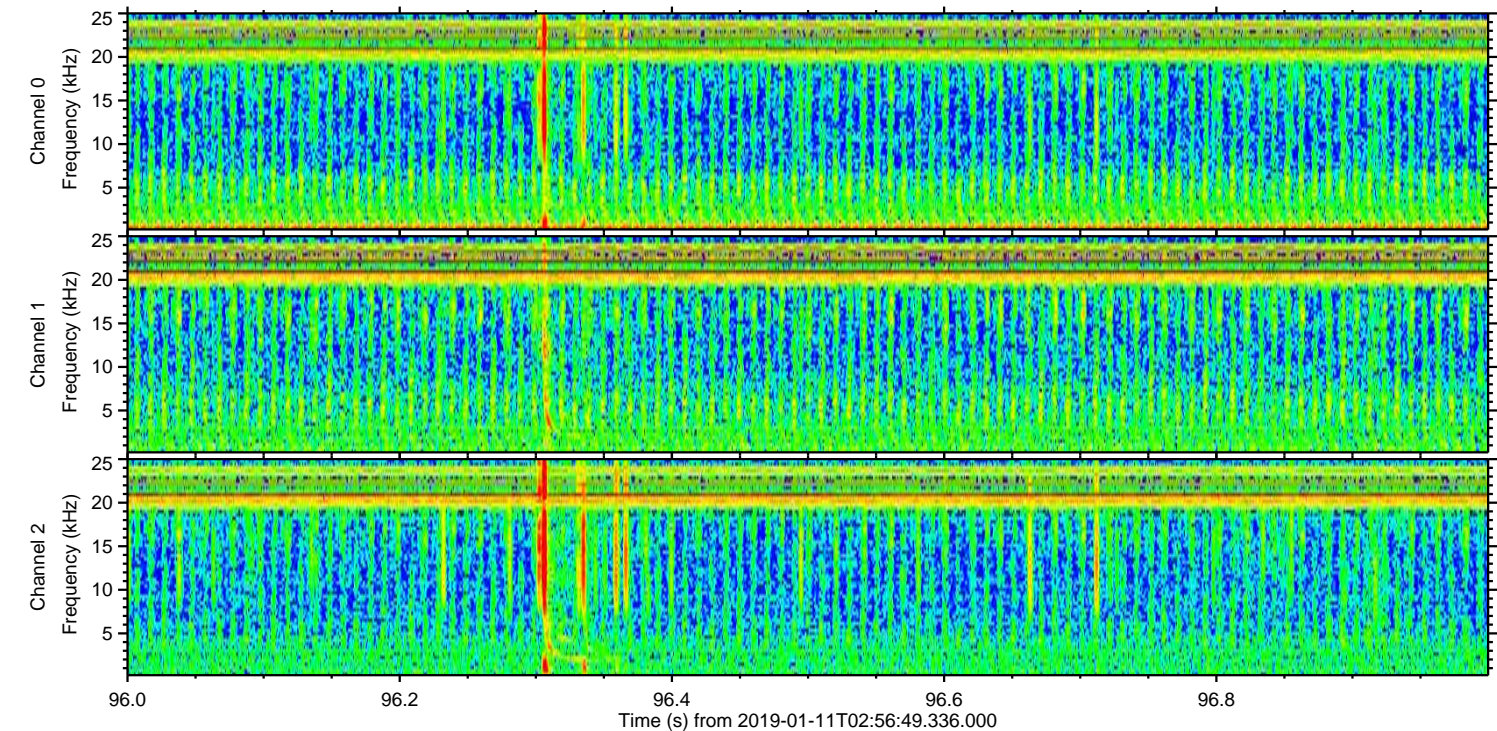
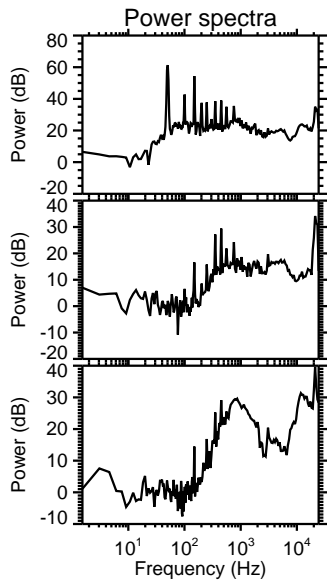
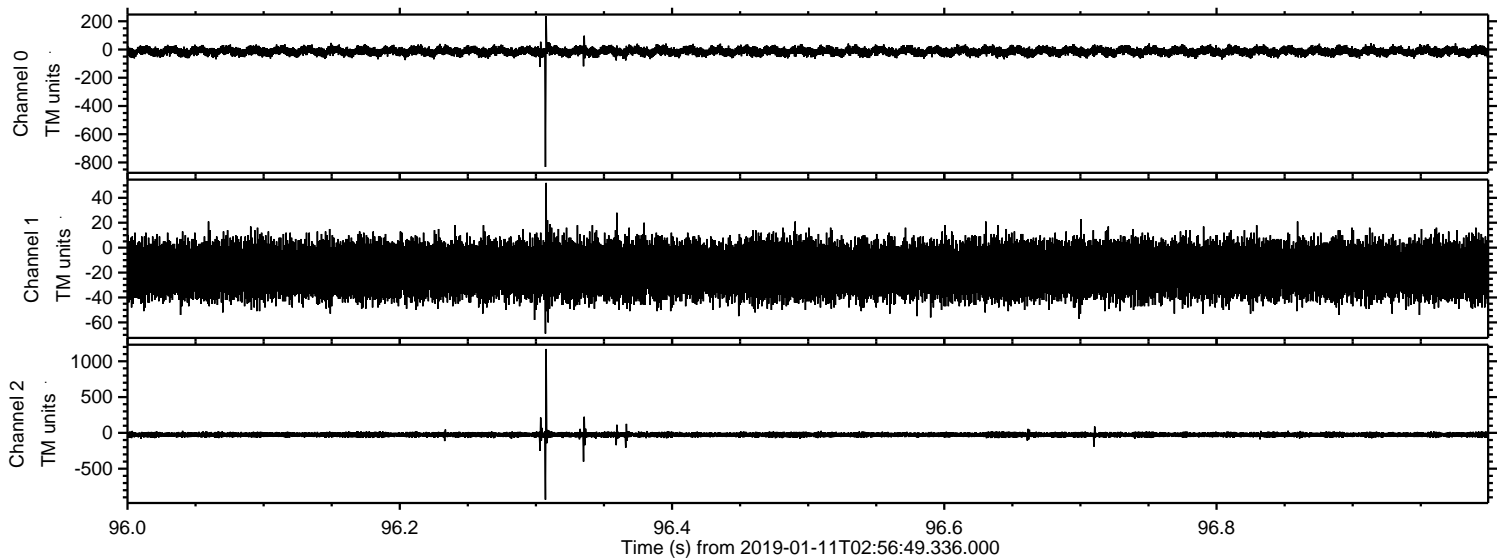
Channel 0  
mn: -589  
mx: 344  
 $\mu$ : -13.1  
 $\sigma$ : 17.7

Channel 1  
mn: -68  
mx: 31  
 $\mu$ : -18.0  
 $\sigma$ : 11.9

Channel 2  
mn: -1175  
mx: 879  
 $\mu$ : -25.2  
 $\sigma$ : 19.8



Processed Fri Jan 11 04:04:48 2019 by ELM ver.2012-10-06 from 001\_\_elm20190111\_025648\_\_dat00.bin





Processed Fri Jan 11 04:04:49 2019 by ELM ver.2012-10-06 from 001\_\_elm20190111\_025648\_\_dat00.bin

