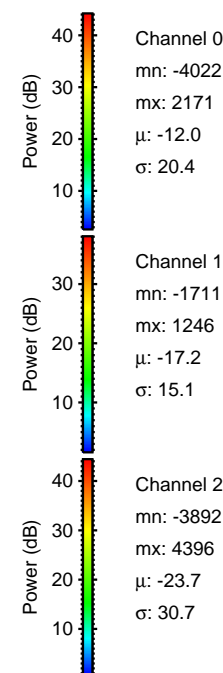
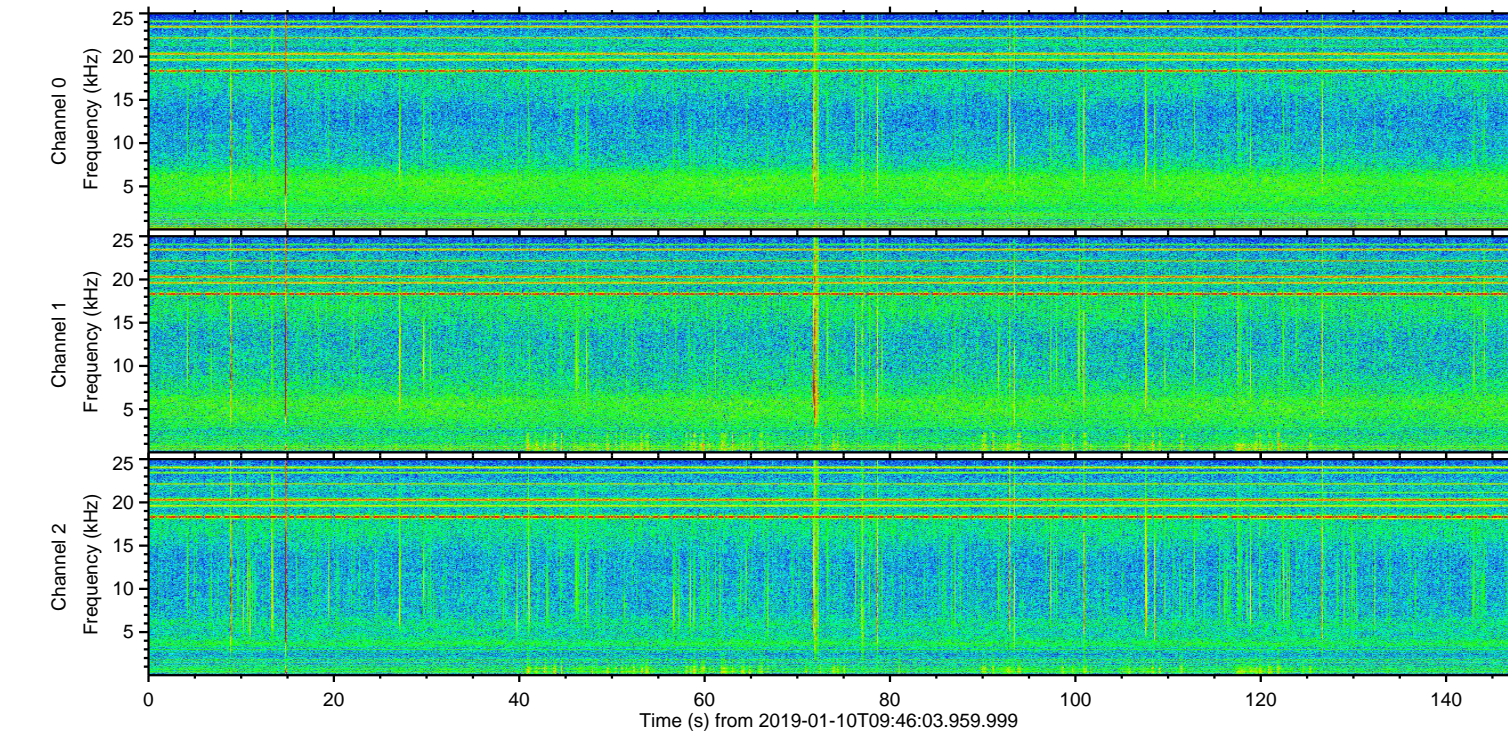
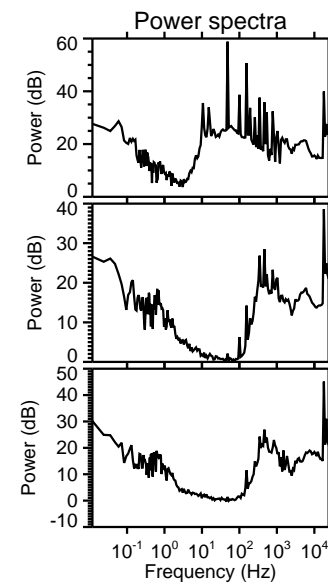
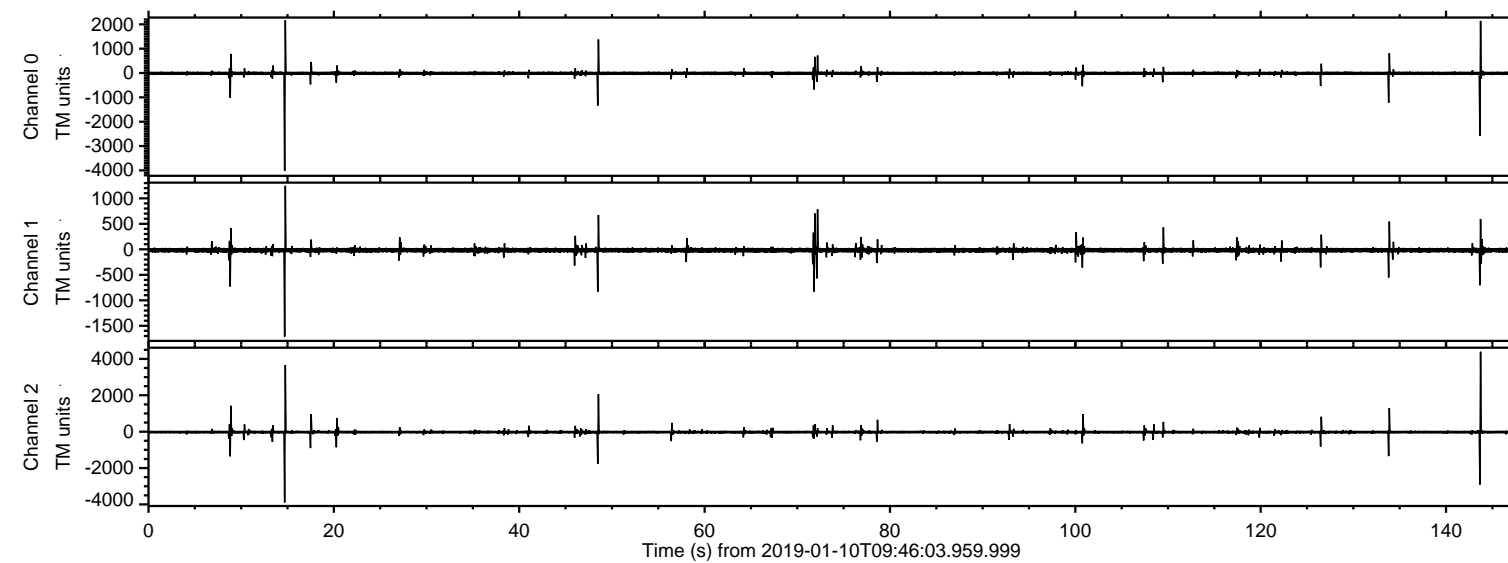


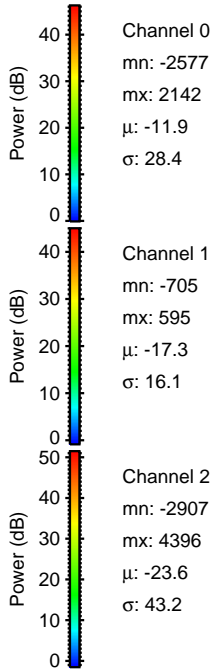
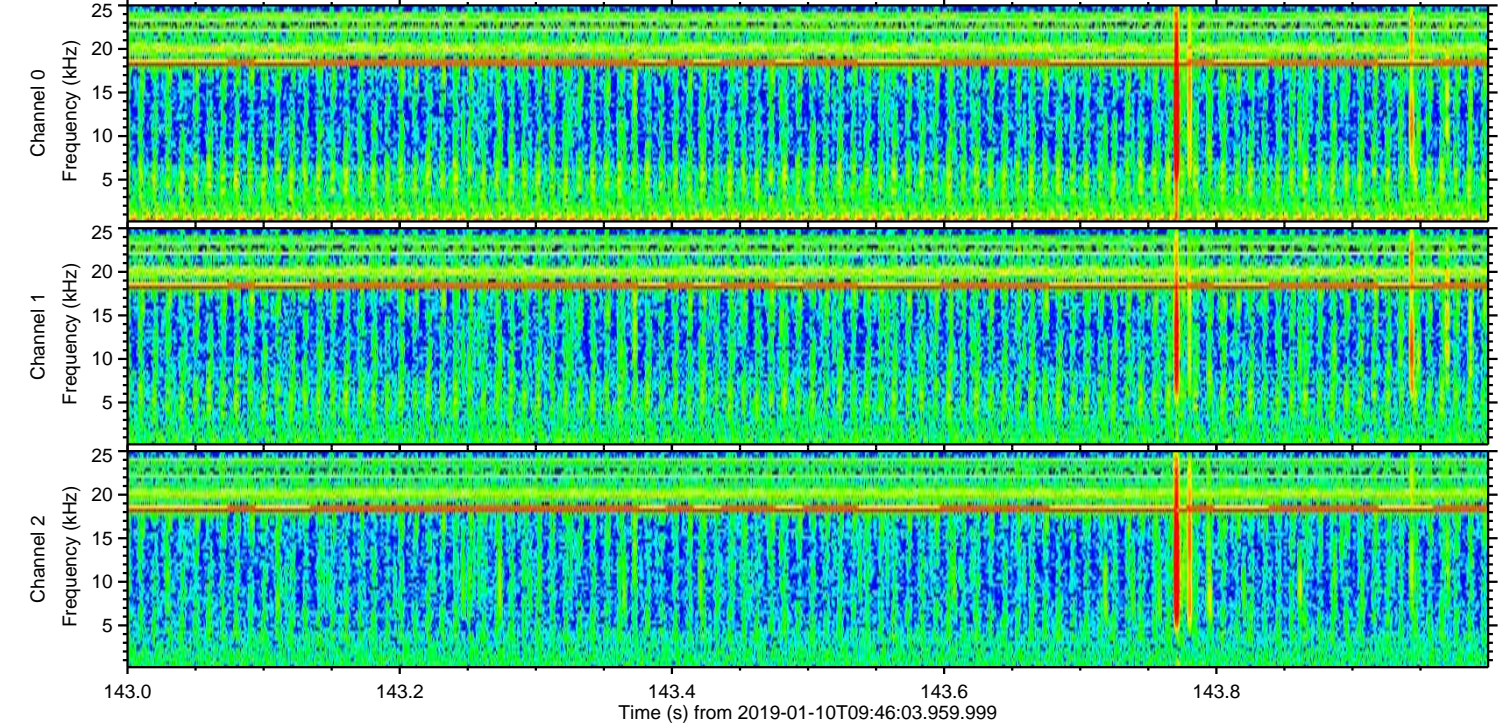
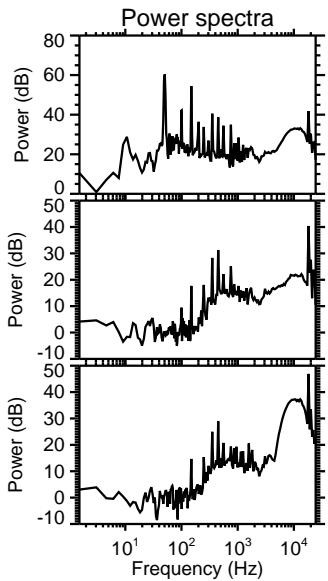
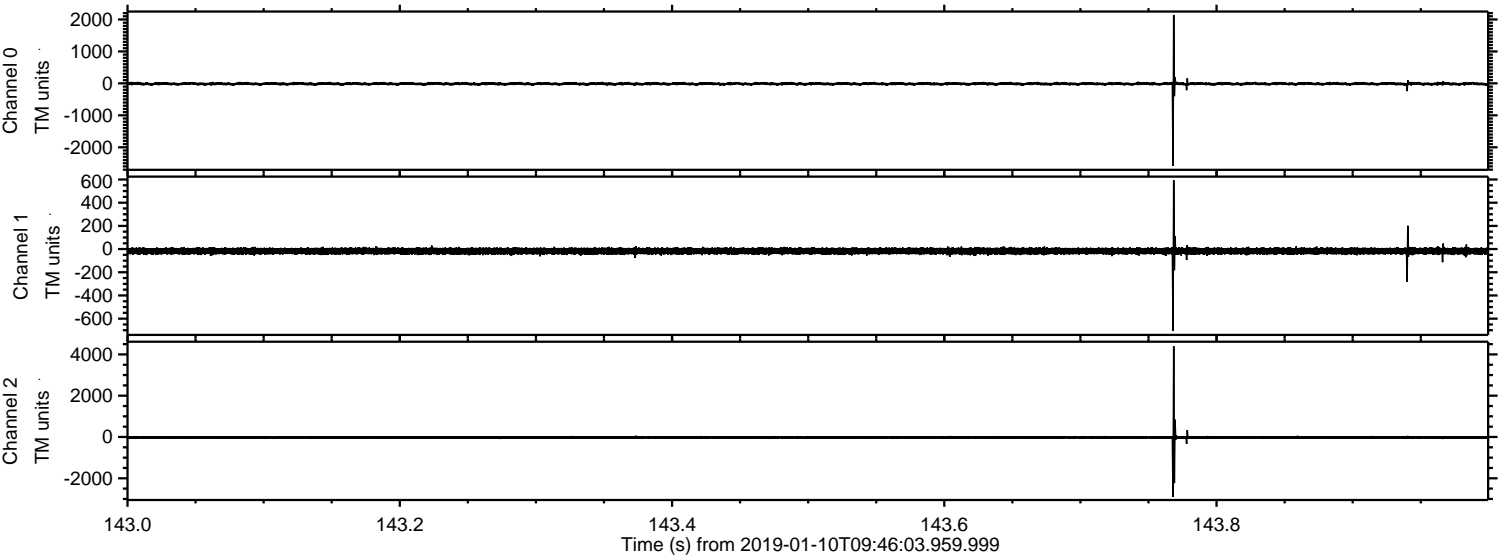
ELMAVAN 3D WAVEFORMS (Measured data sampled at 50 kHz) 51000 packets of 144 samples from 2019-01-10T09:46:03.959.999.

Processed Thu Jan 10 10:53:48 2019 by ELM ver.2012-10-06 from 001__elm20190110_094602__dat00.bin

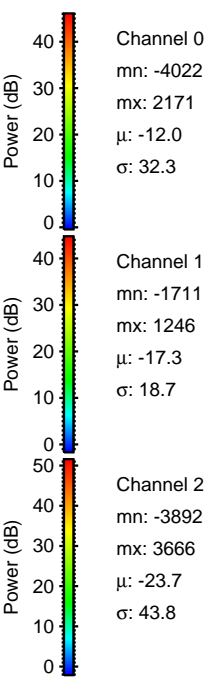
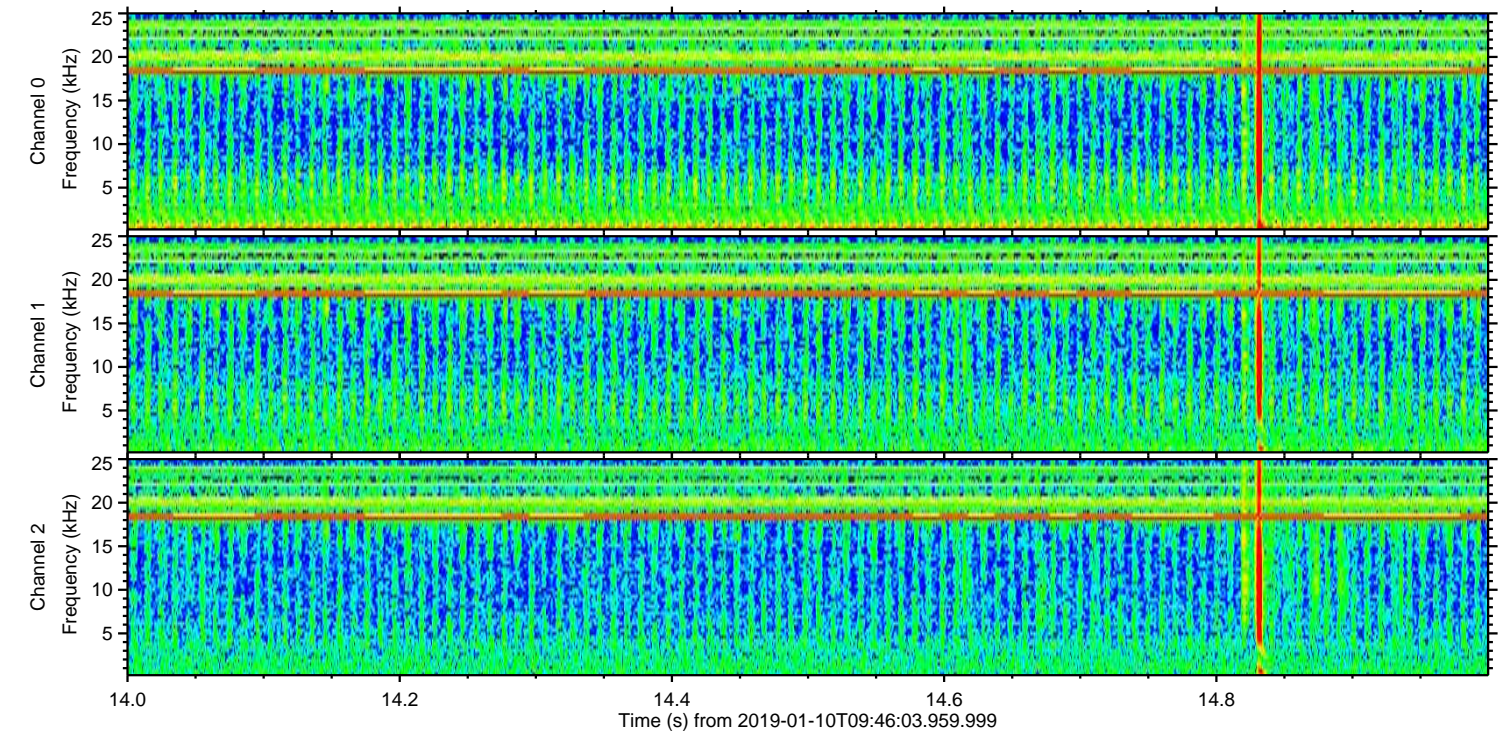
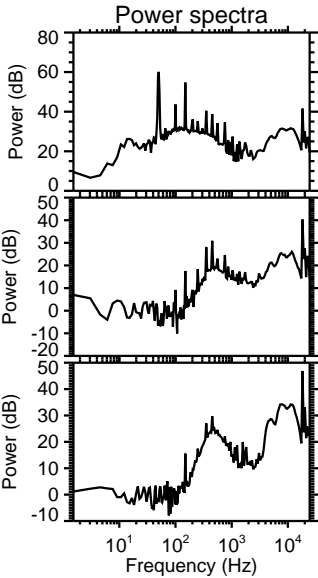
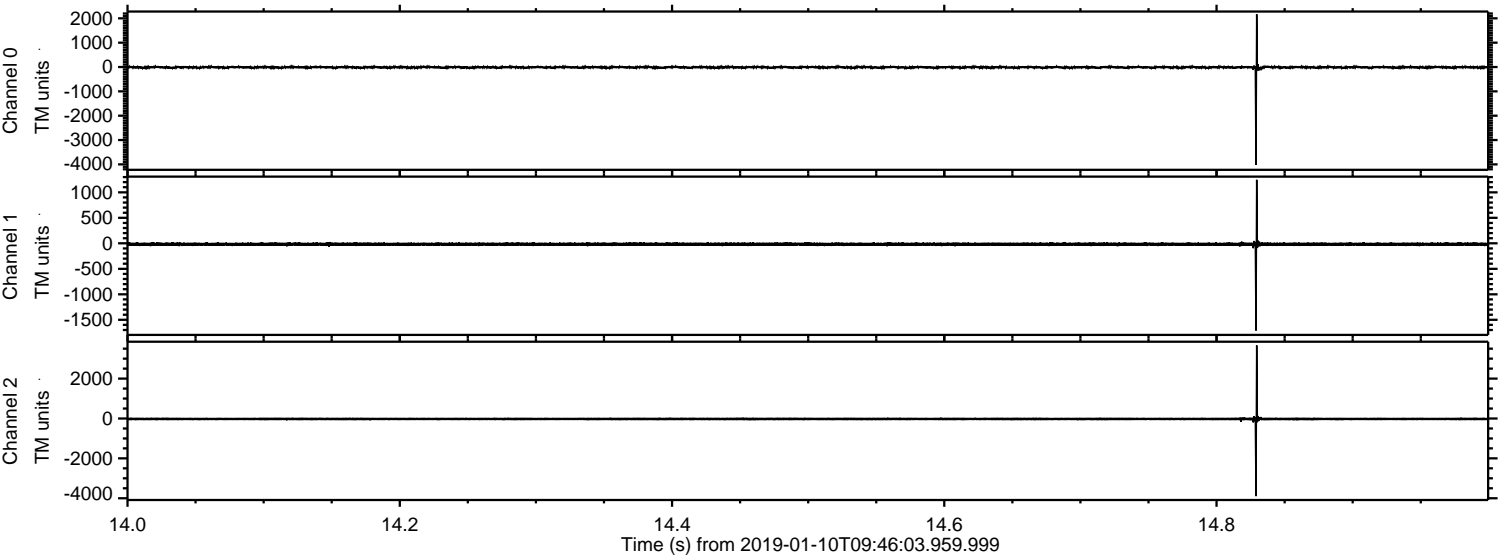


ELMAVAN 3D WAVEFORMS (Measured data sampled at 50 kHz) 51000 packets of 144 samples from 2019-01-10T09:46:03.959.999. Part 144/147

Processed Thu Jan 10 10:53:54 2019 by ELM ver.2012-10-06 from 001__elm20190110_094602__dat00.bin



Processed Thu Jan 10 10:53:55 2019 by ELM ver.2012-10-06 from 001__elm20190110_094602__dat00.bin

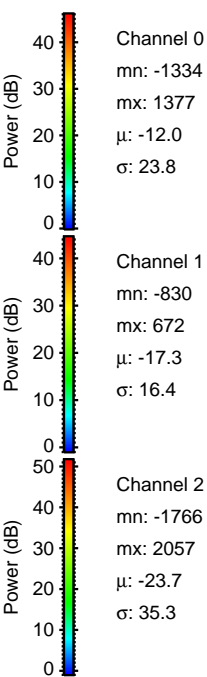
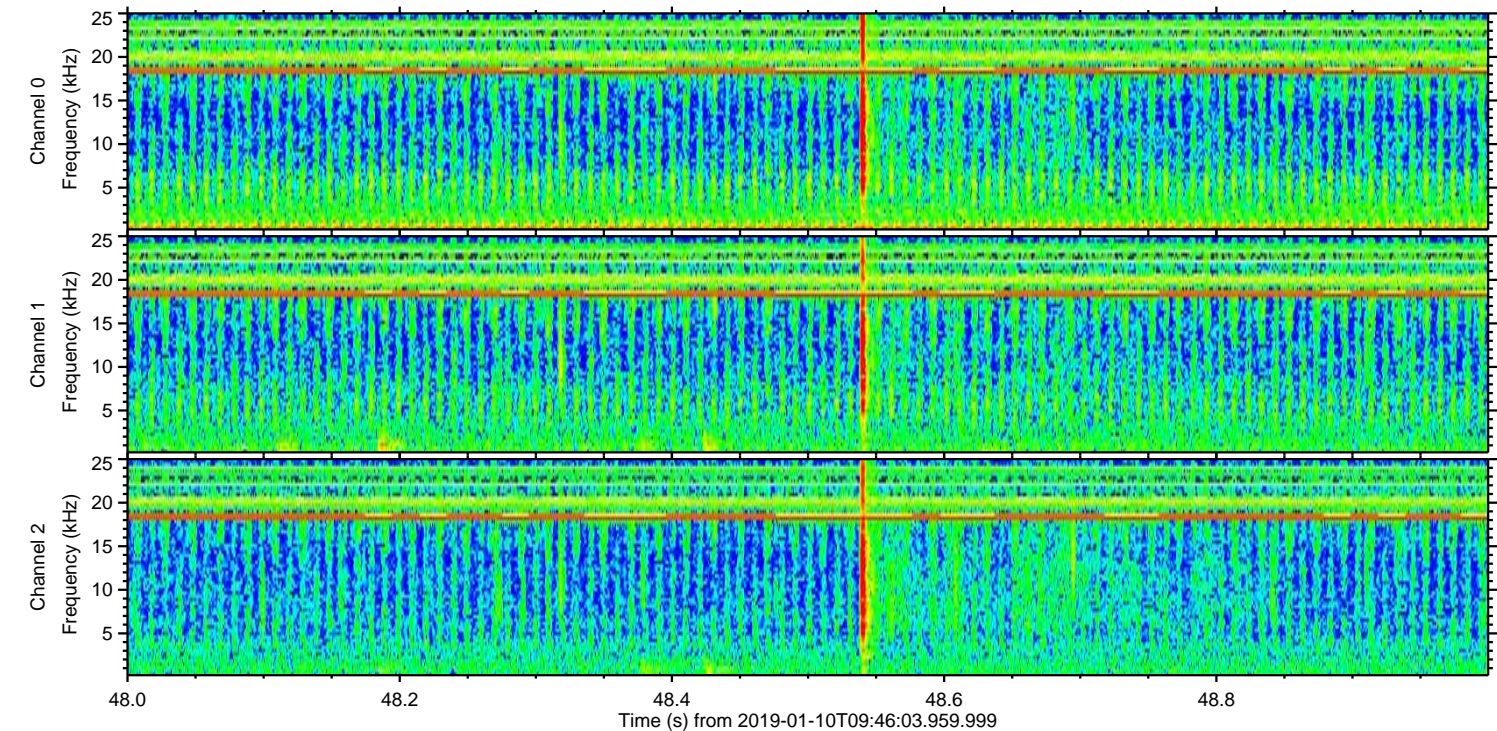
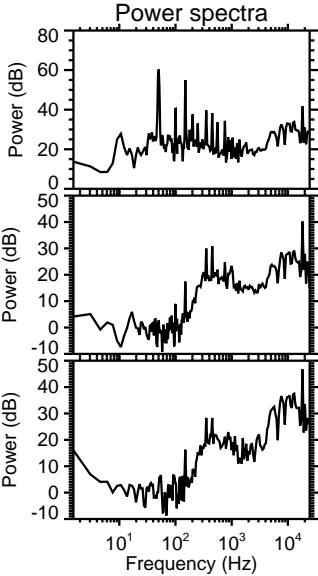
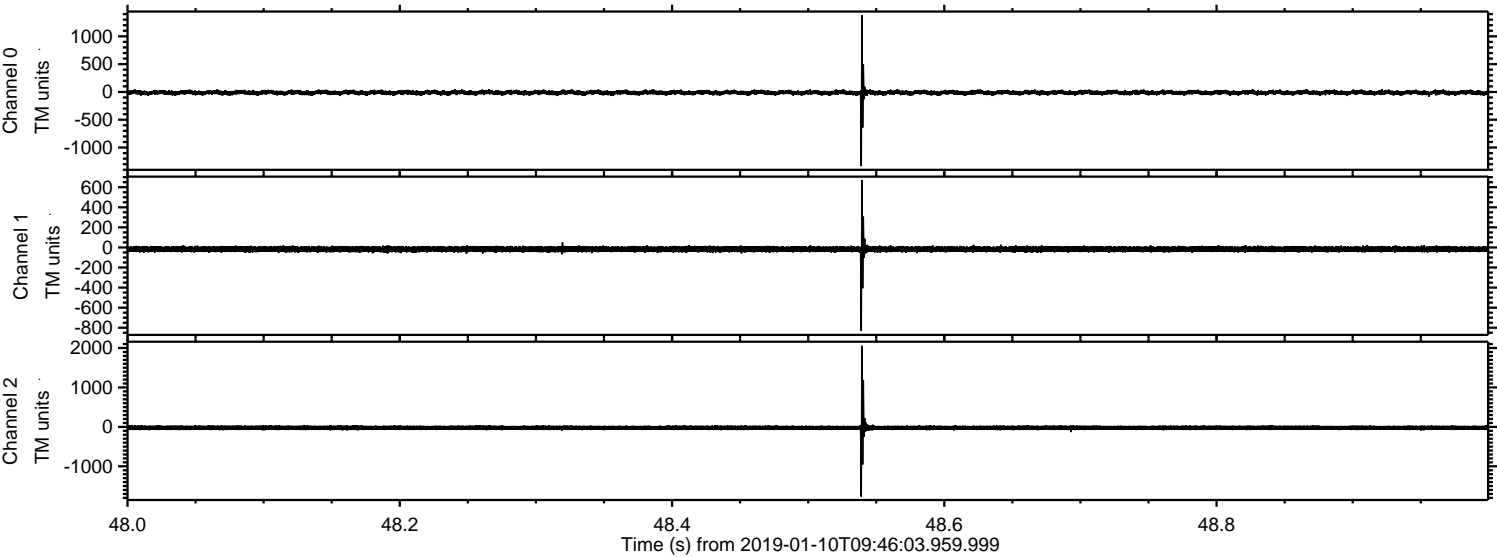


Channel 0
mn: -4022
mx: 2171
 μ : -12.0
 σ : 32.3

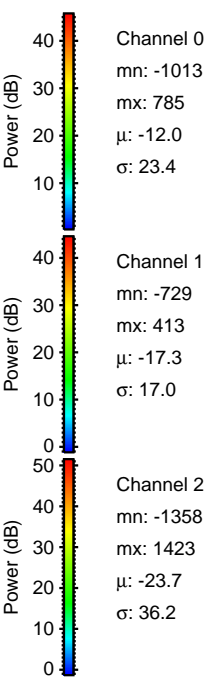
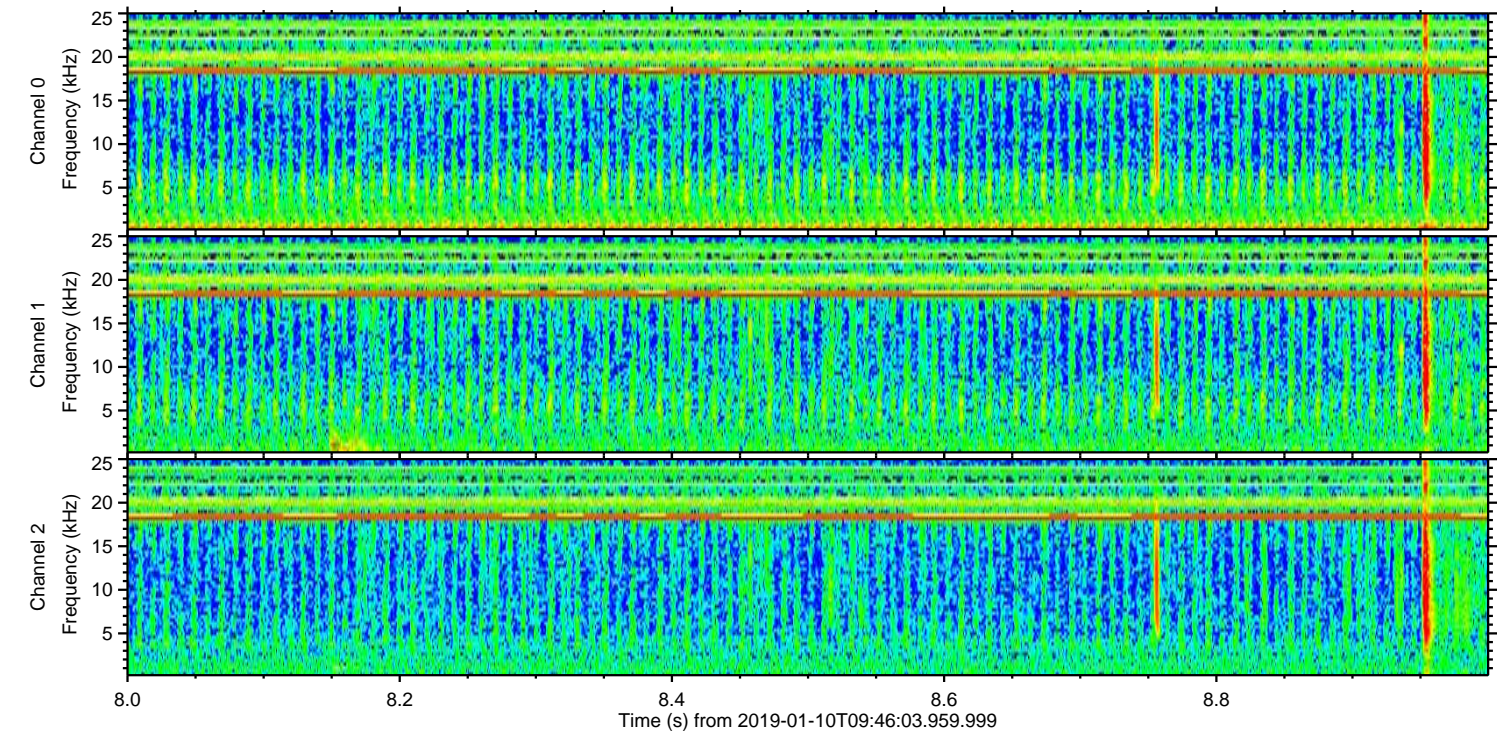
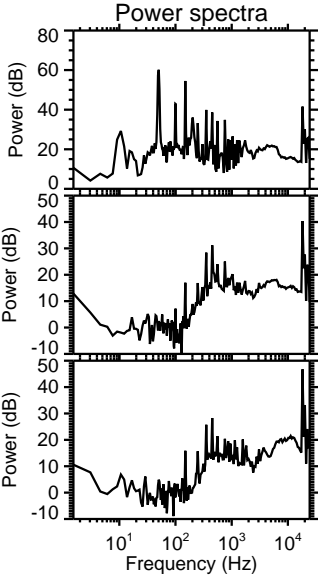
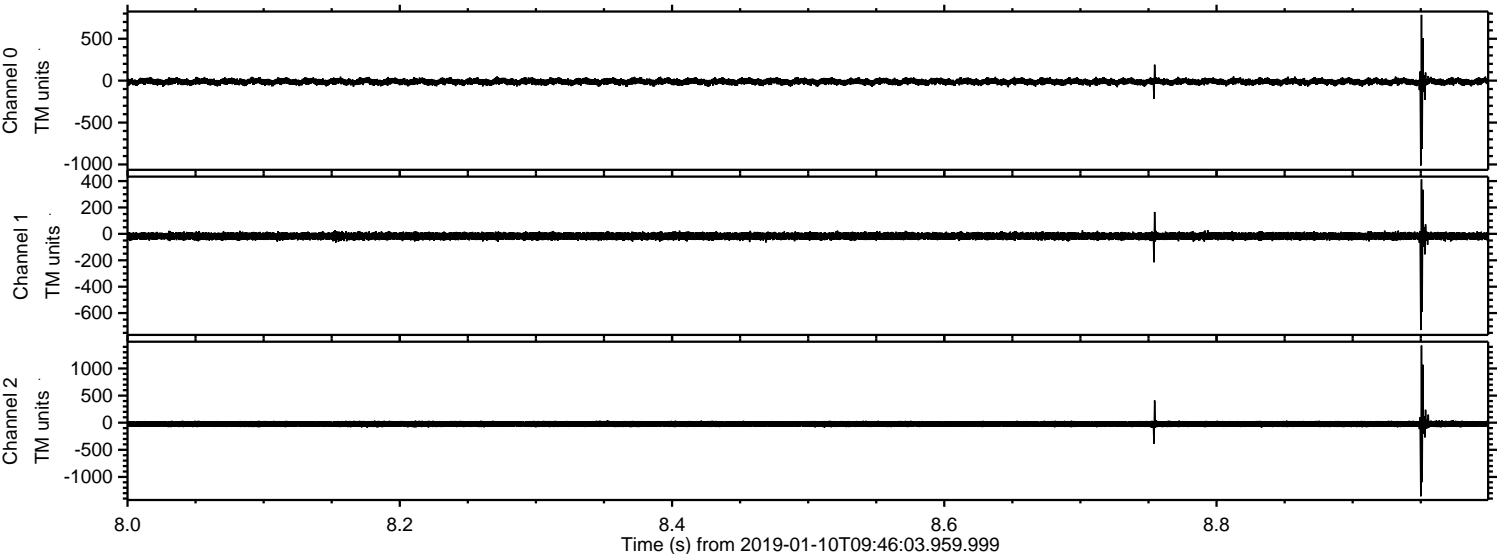
Channel 1
mn: -1711
mx: 1246
 μ : -17.3
 σ : 18.7

Channel 2
mn: -3892
mx: 3666
 μ : -23.7
 σ : 43.8

Processed Thu Jan 10 10:53:56 2019 by ELM ver.2012-10-06 from 001__elm20190110_094602__dat00.bin

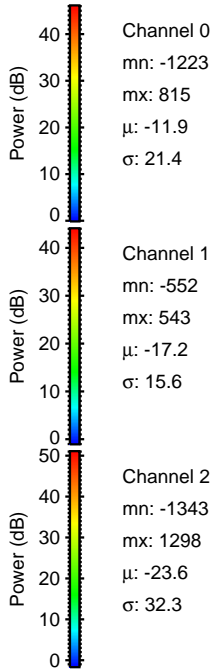
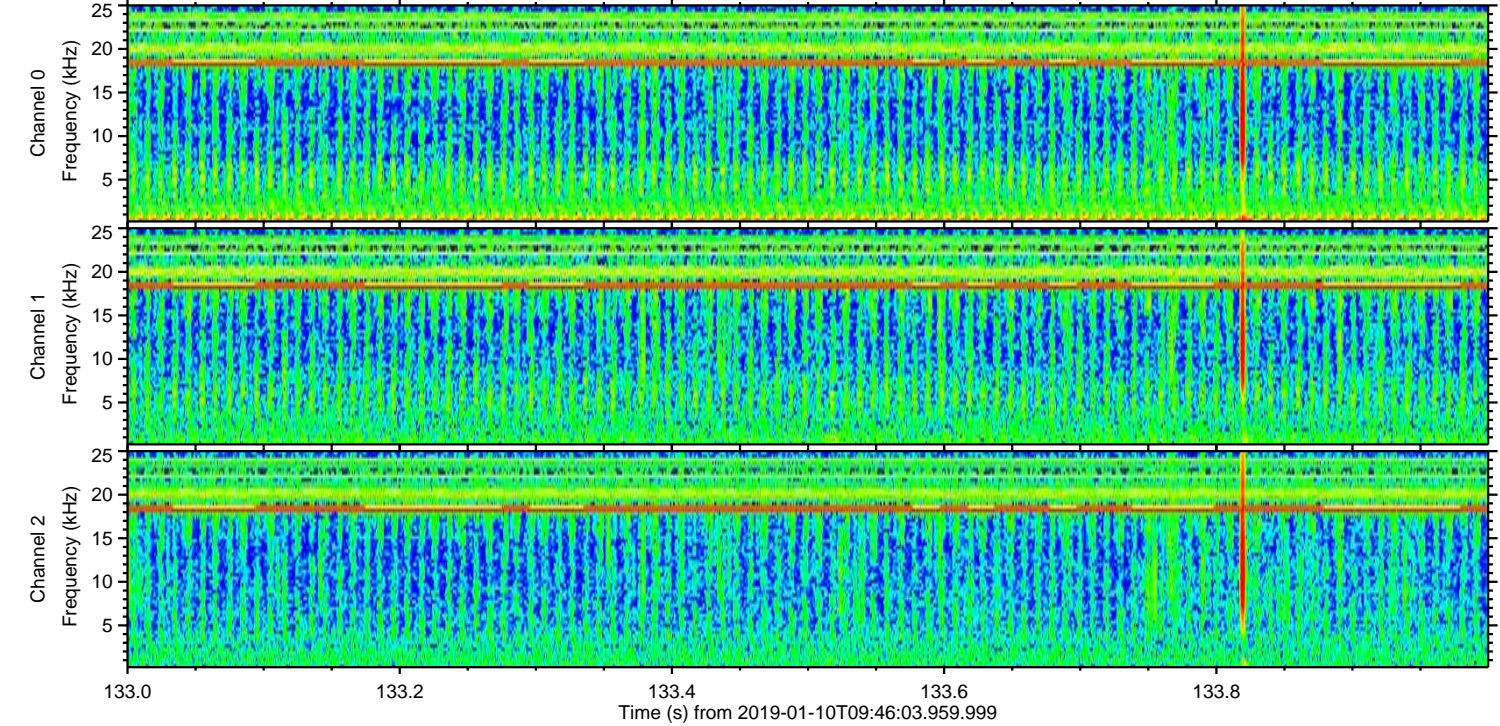
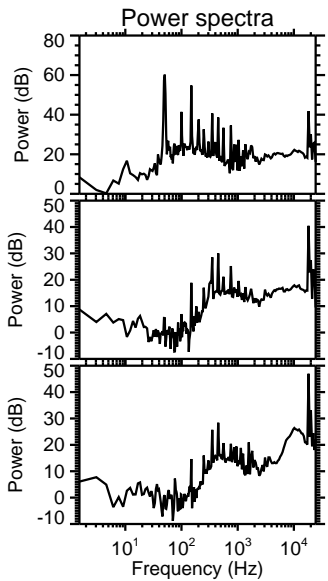
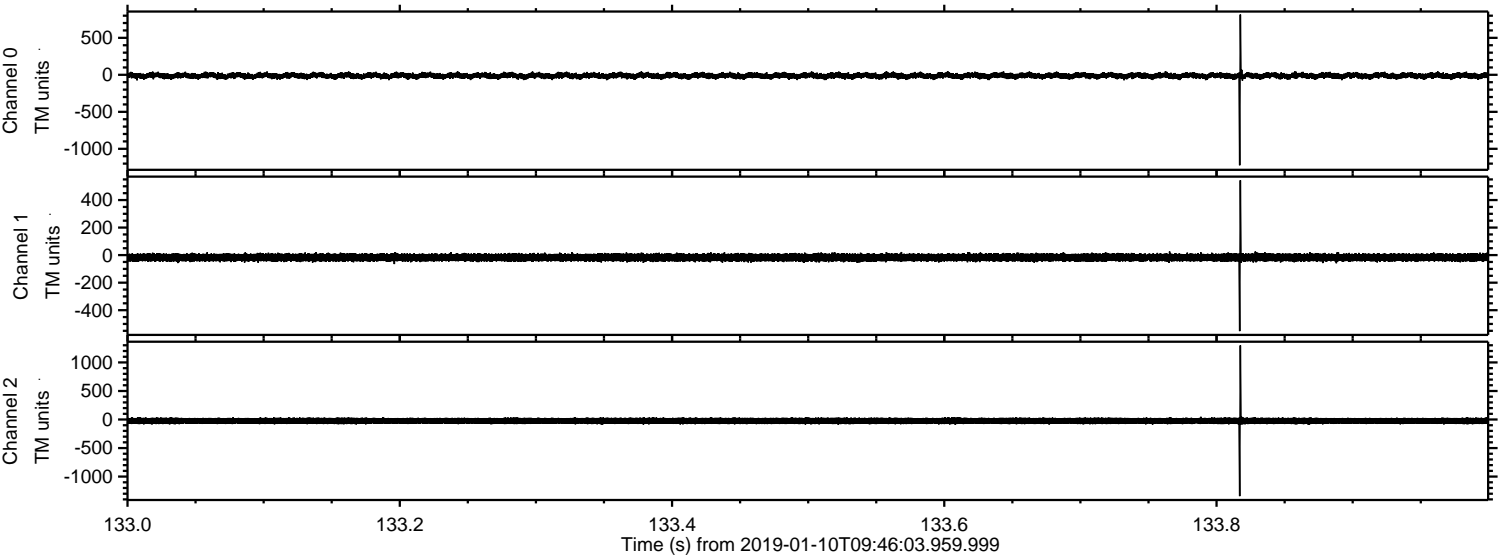


Processed Thu Jan 10 10:53:56 2019 by ELM ver.2012-10-06 from 001__elm20190110_094602__dat00.bin



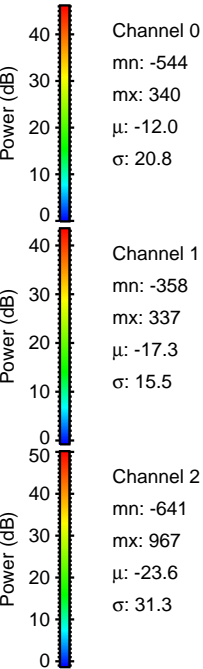
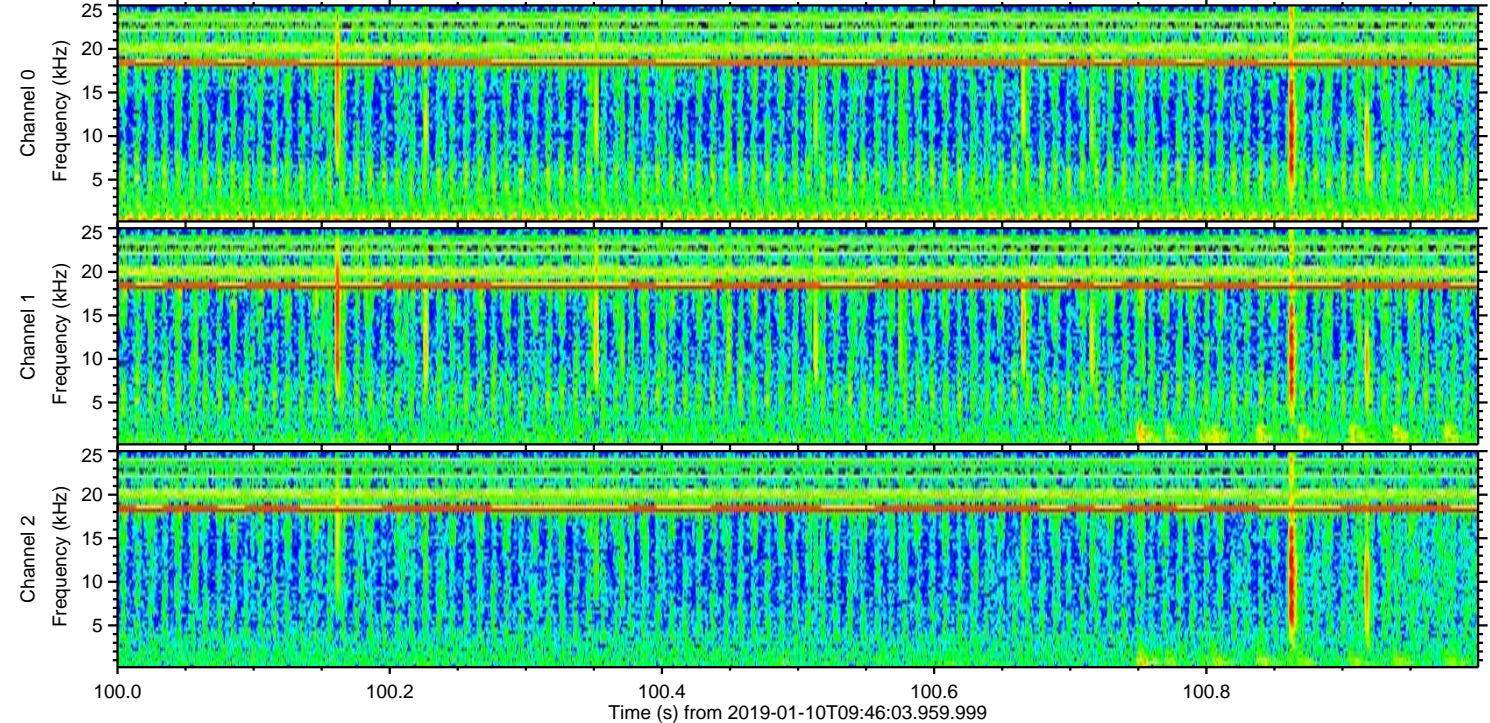
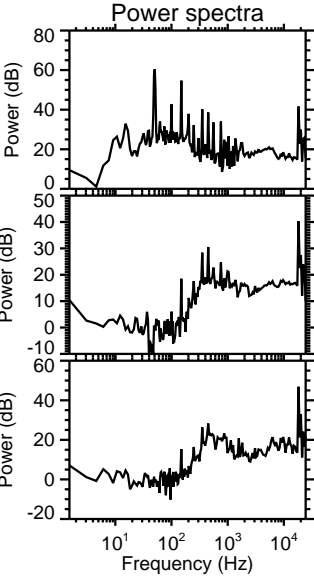
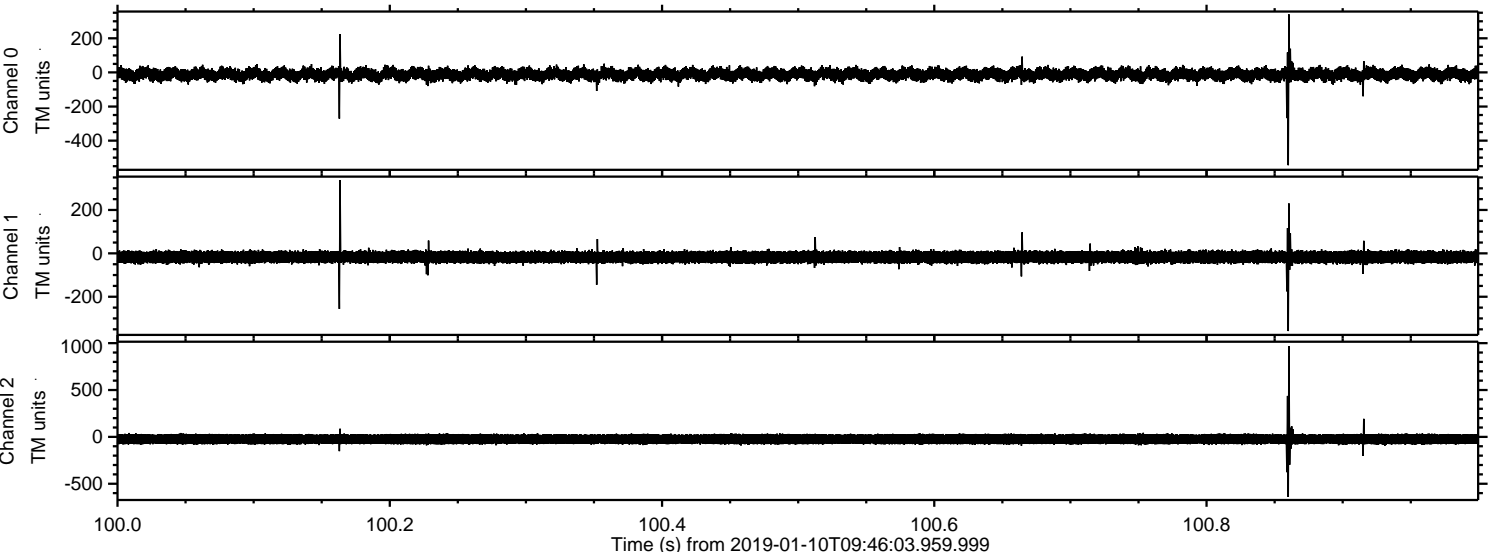
ELMAVAN 3D WAVEFORMS (Measured data sampled at 50 kHz) 51000 packets of 144 samples from 2019-01-10T09:46:03.959.999. Part 134/147

Processed Thu Jan 10 10:53:57 2019 by ELM ver.2012-10-06 from 001__elm20190110_094602__dat00.bin

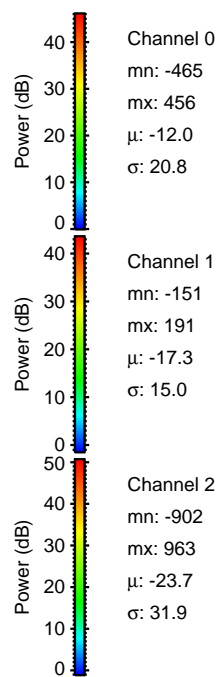
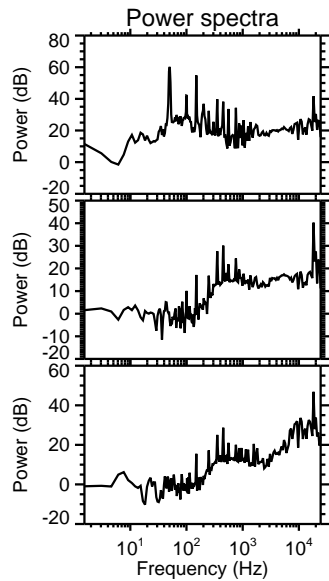
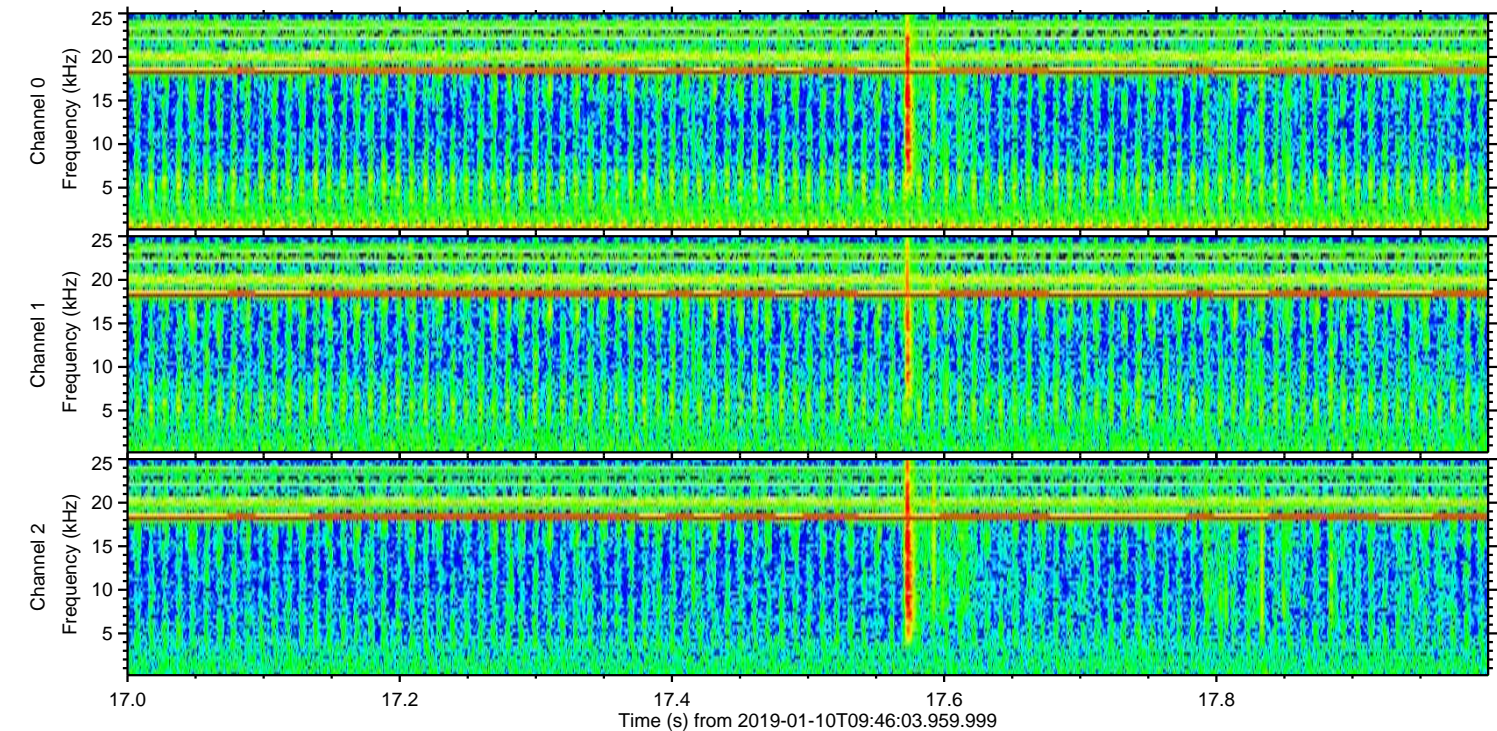
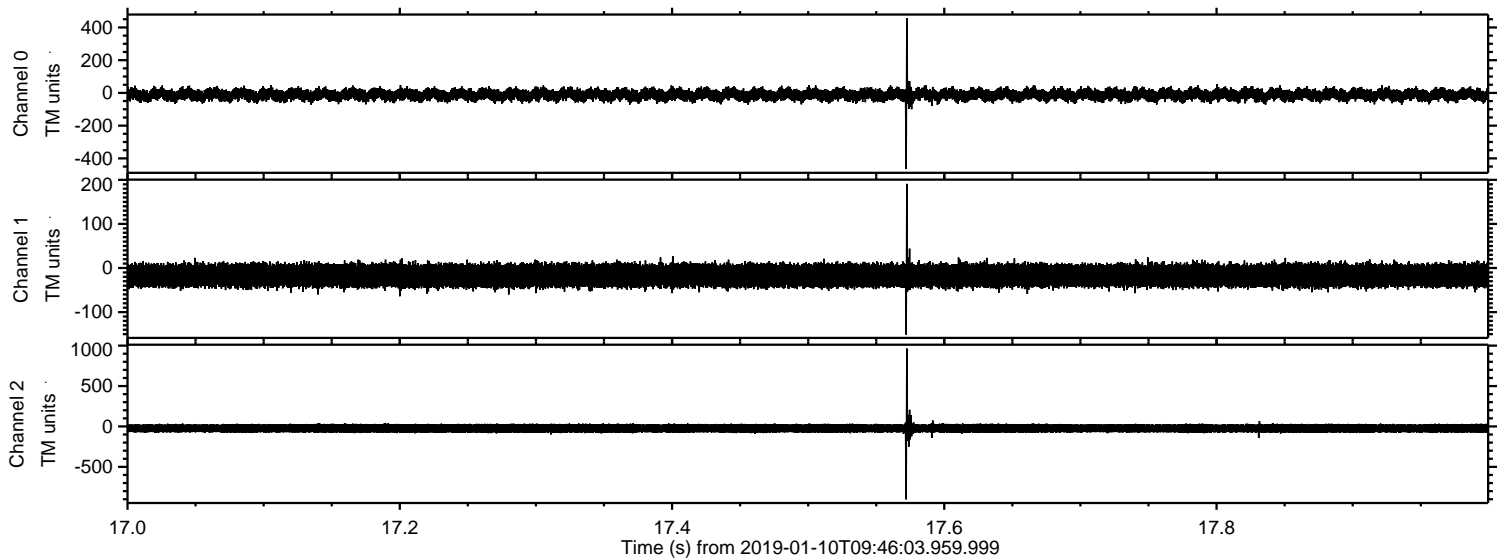


ELMAVAN 3D WAVEFORMS (Measured data sampled at 50 kHz) 51000 packets of 144 samples from 2019-01-10T09:46:03.959.999. Part 101/147

Processed Thu Jan 10 10:53:58 2019 by ELM ver.2012-10-06 from 001__elm20190110_094602__dat00.bin



Processed Thu Jan 10 10:53:59 2019 by ELM ver.2012-10-06 from 001__elm20190110_094602__dat00.bin

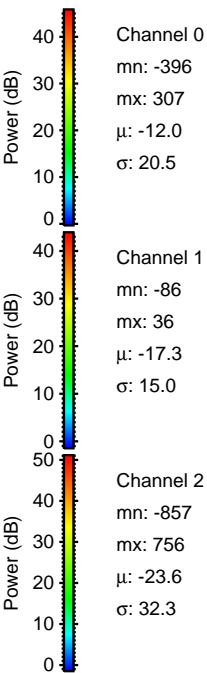
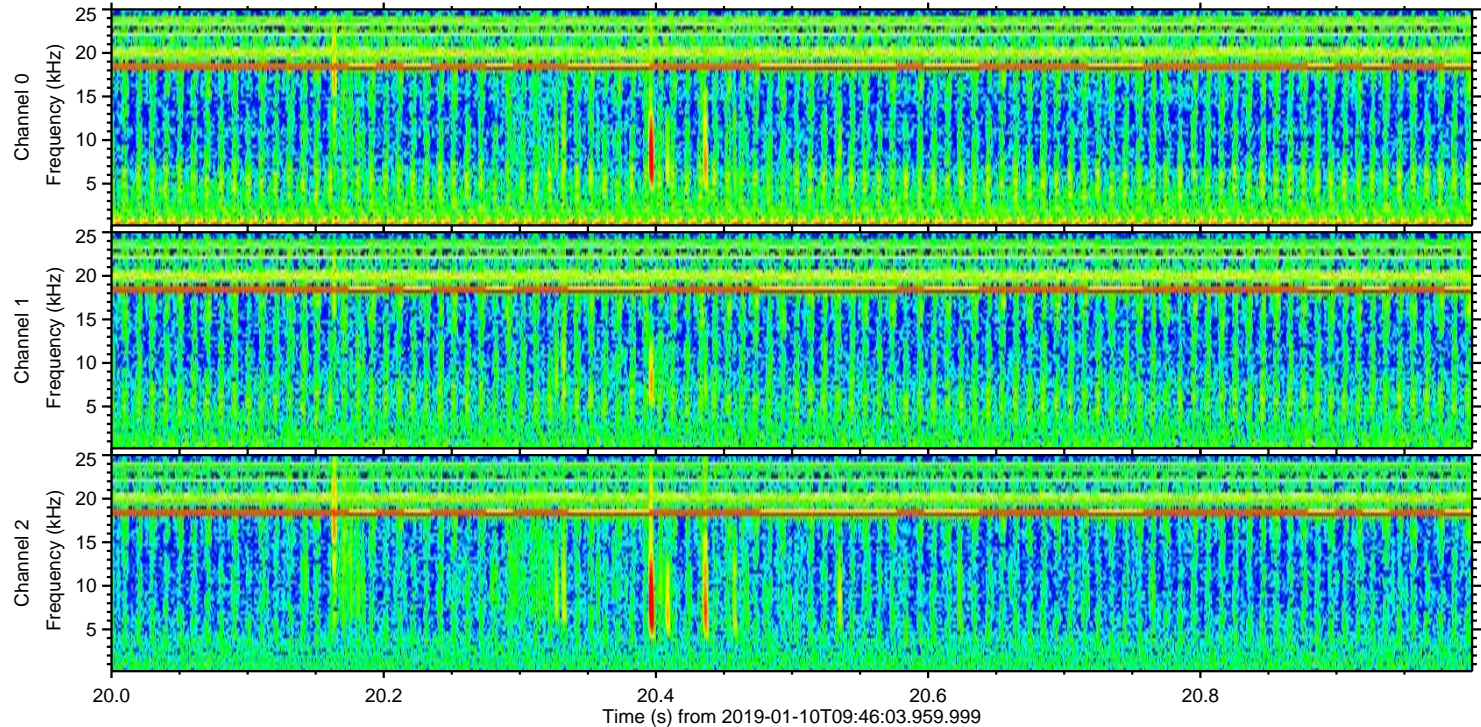
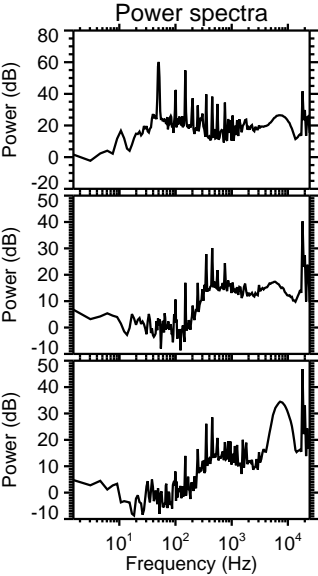
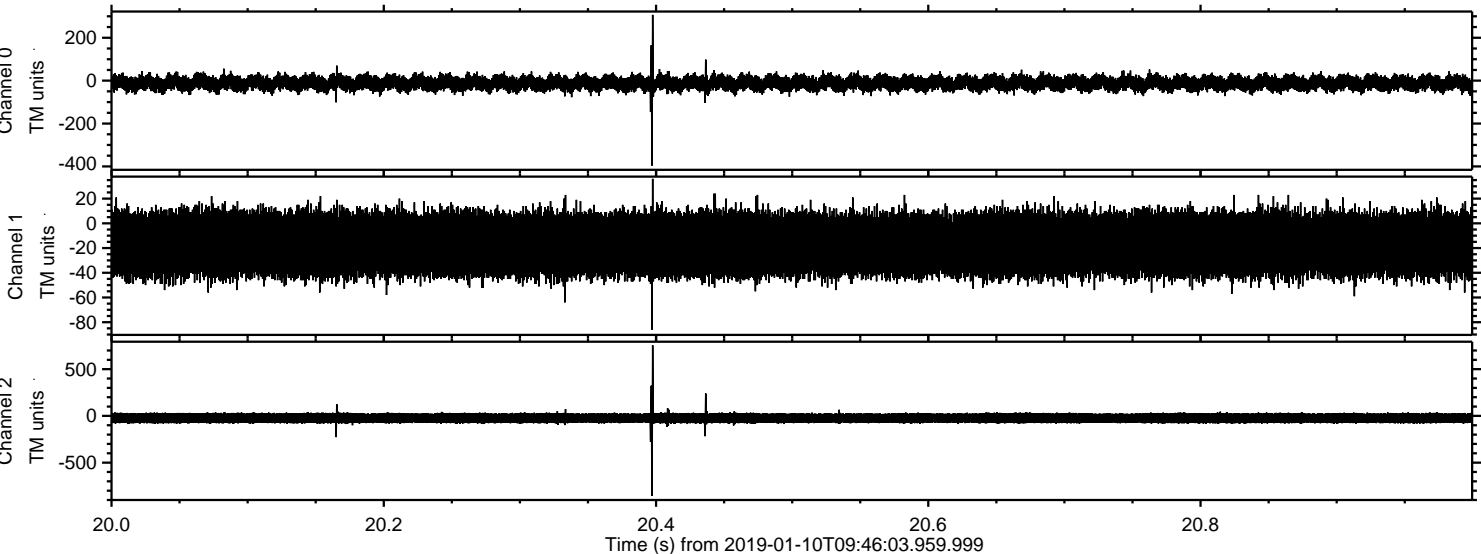


Channel 0
mn: -465
mx: 456
 μ : -12.0
 σ : 20.8

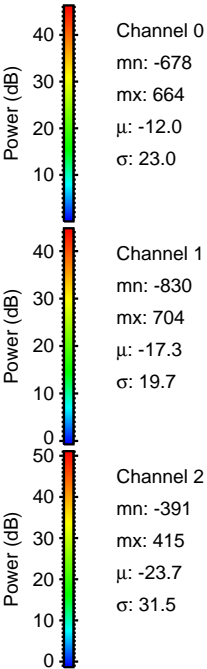
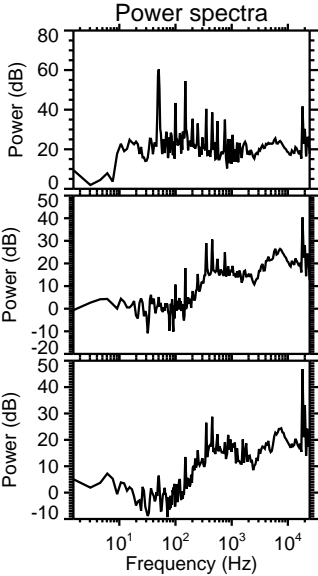
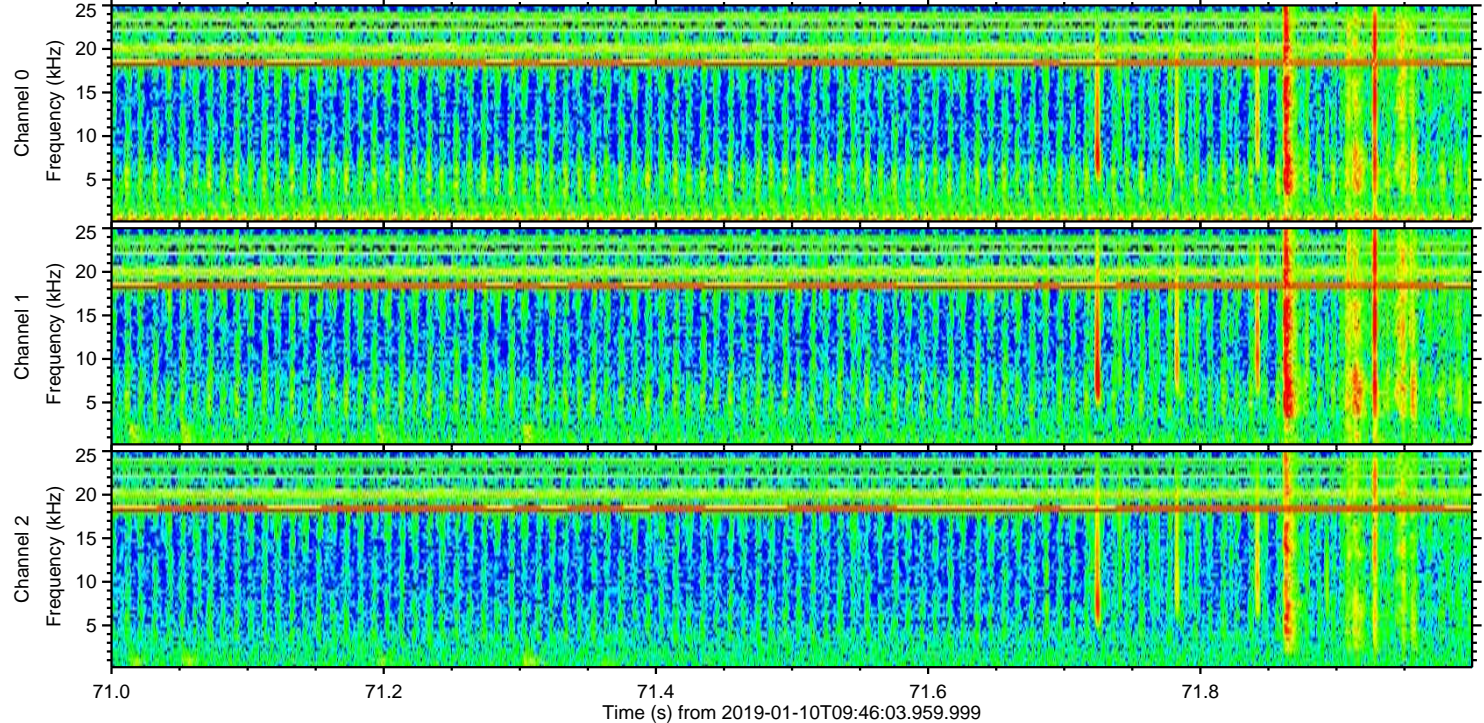
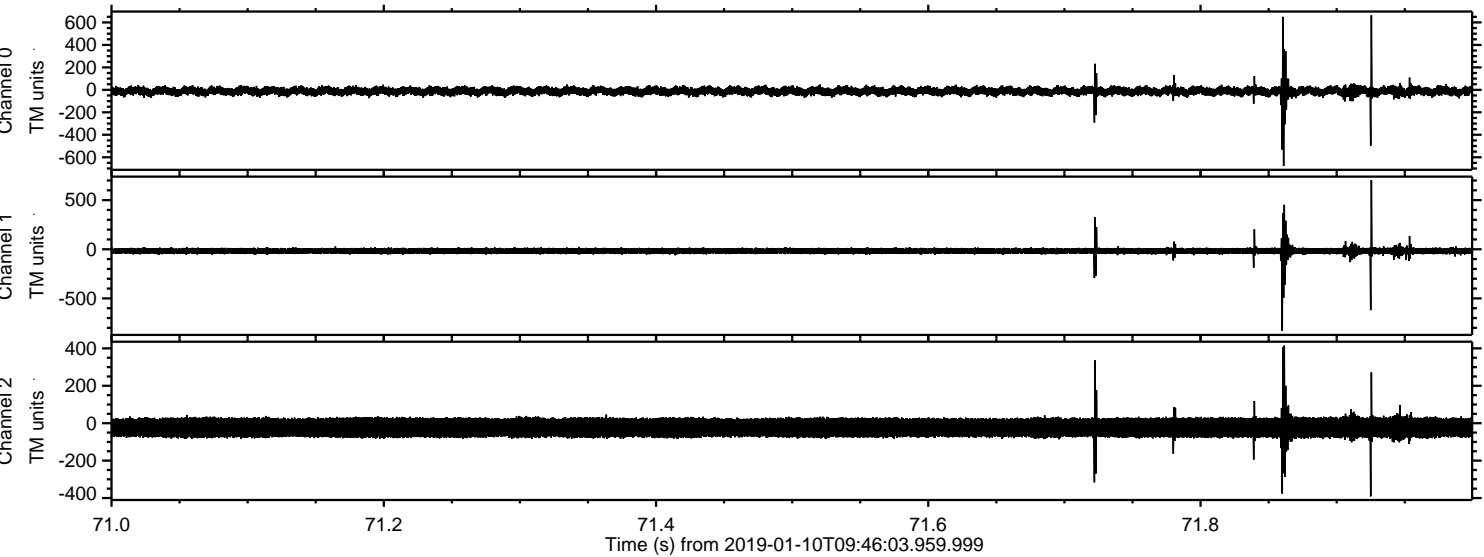
Channel 1
mn: -151
mx: 191
 μ : -17.3
 σ : 15.0

Channel 2
mn: -902
mx: 963
 μ : -23.7
 σ : 31.9

Processed Thu Jan 10 10:53:59 2019 by ELM ver.2012-10-06 from 001__elm20190110_094602__dat00.bin



Processed Thu Jan 10 10:54:00 2019 by ELM ver.2012-10-06 from 001__elm20190110_094602__dat00.bin



Processed Thu Jan 10 10:54:00 2019 by ELM ver.2012-10-06 from 001__elm20190110_094602__dat00.bin

