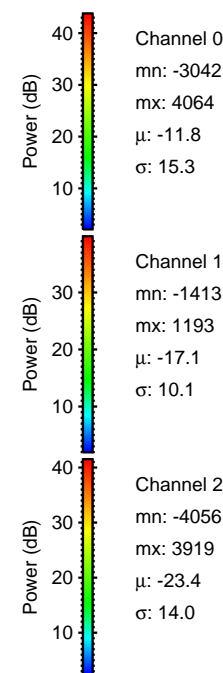
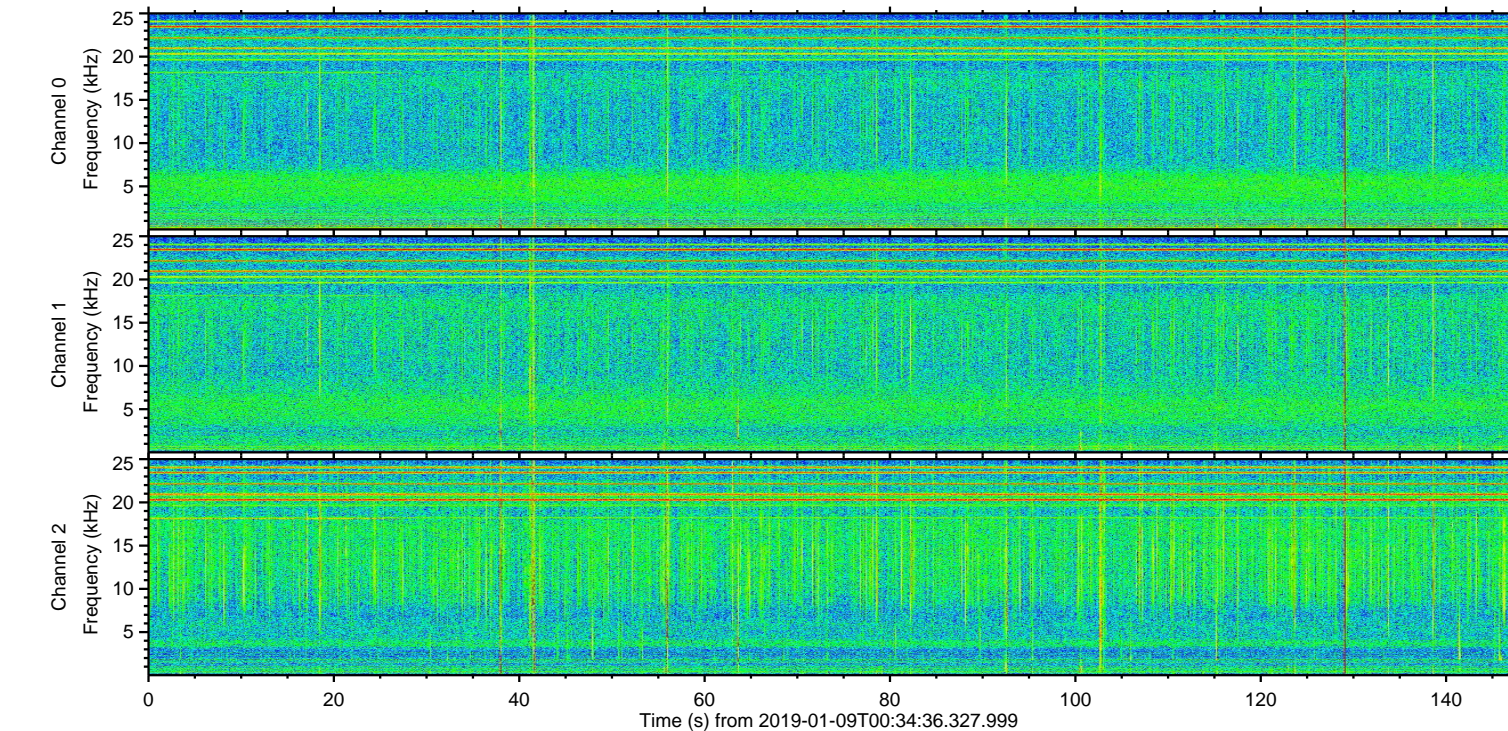
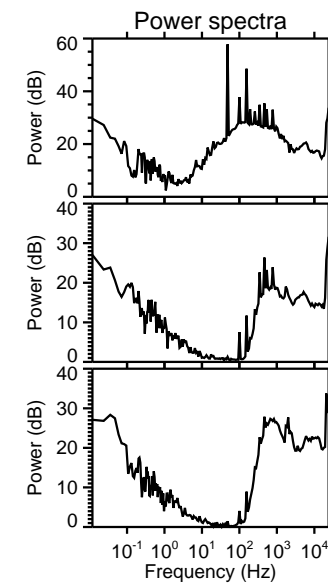
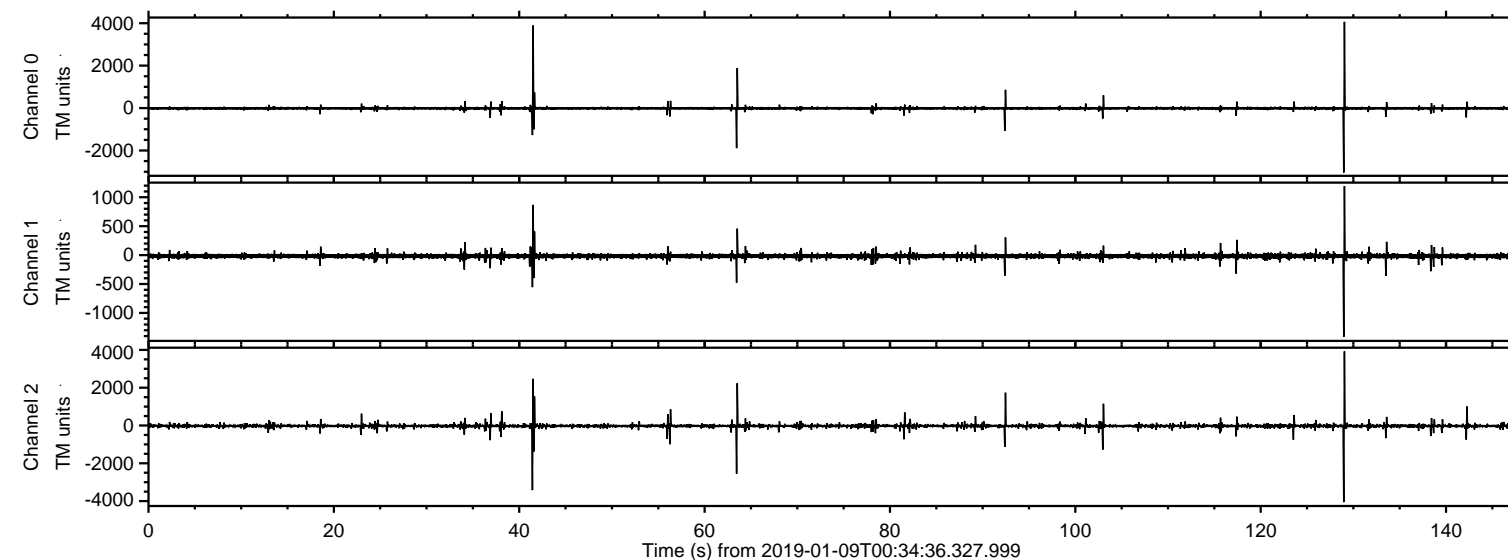


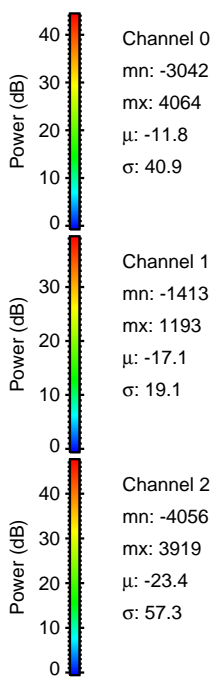
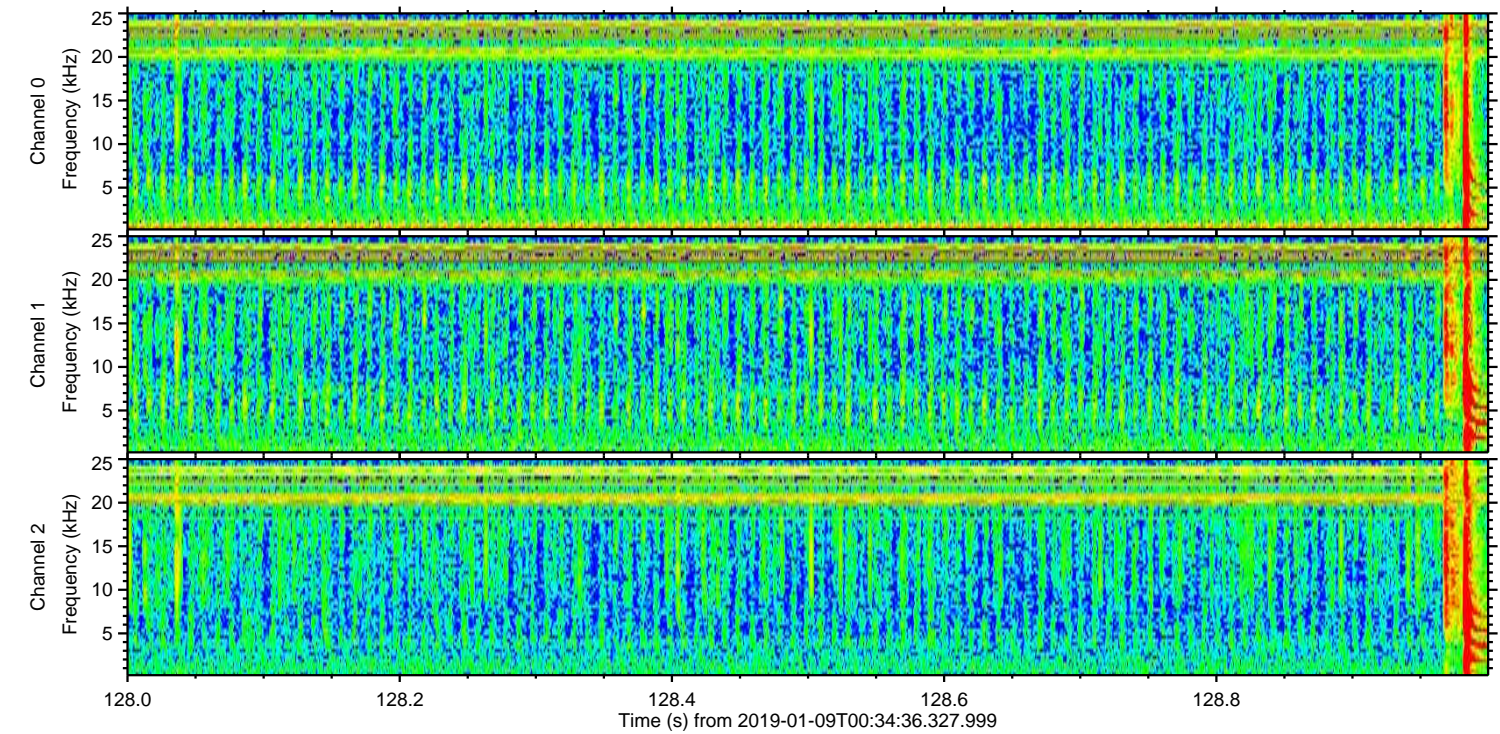
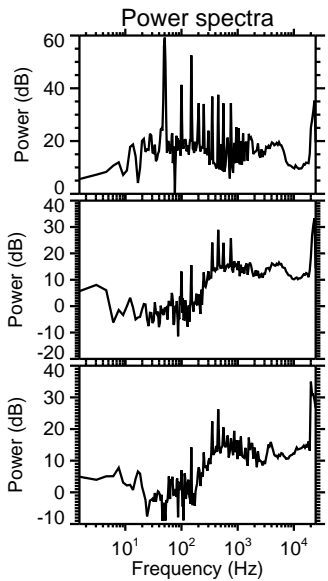
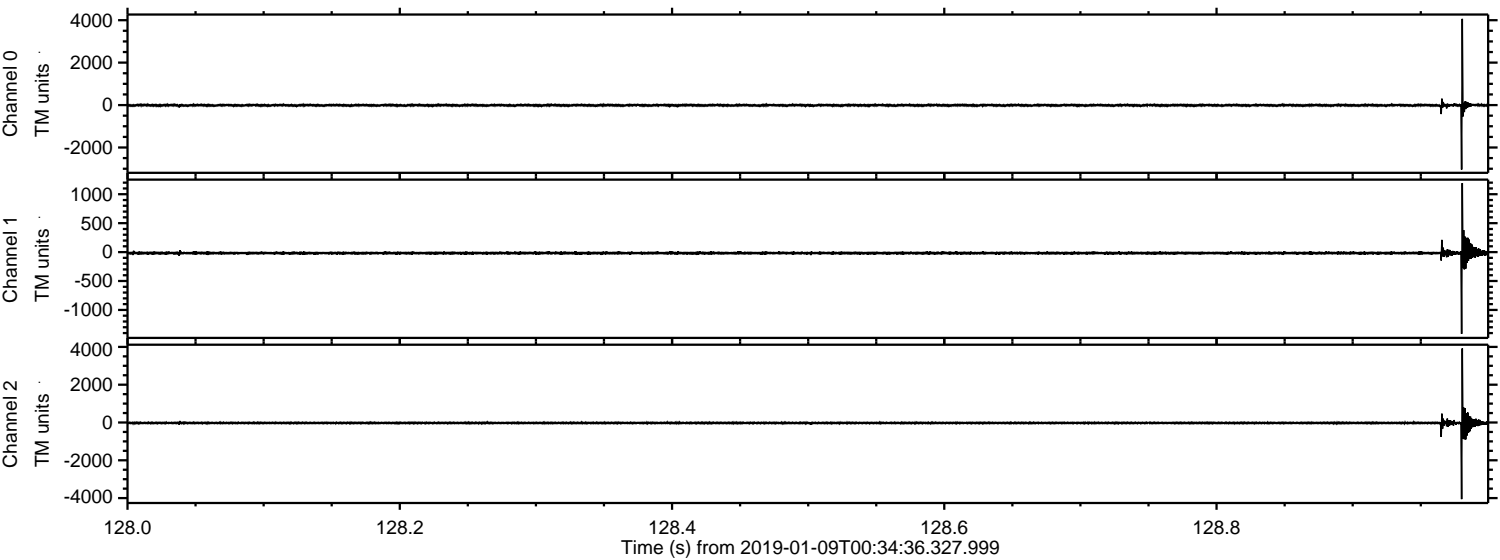
ELMAVAN 3D WAVEFORMS (Measured data sampled at 50 kHz) 51000 packets of 144 samples from 2019-01-09T00:34:36.327.999.

Processed Wed Jan 9 01:42:24 2019 by ELM ver.2012-10-06 from 001__elm20190109_003435__dat00.bin



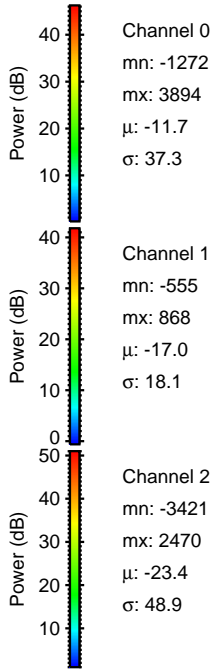
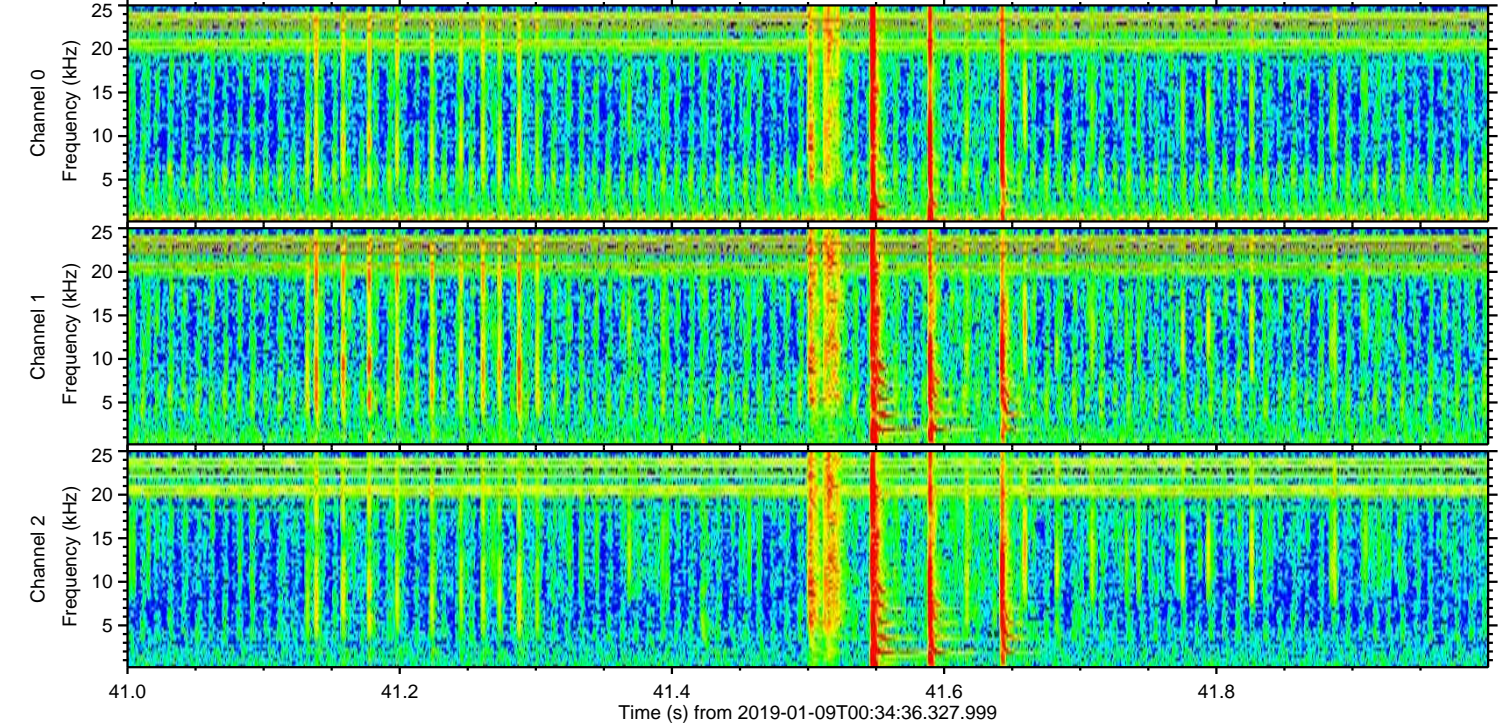
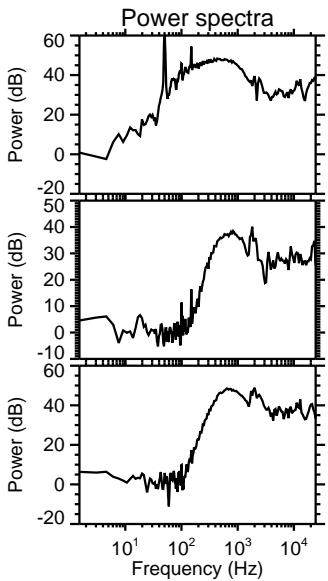
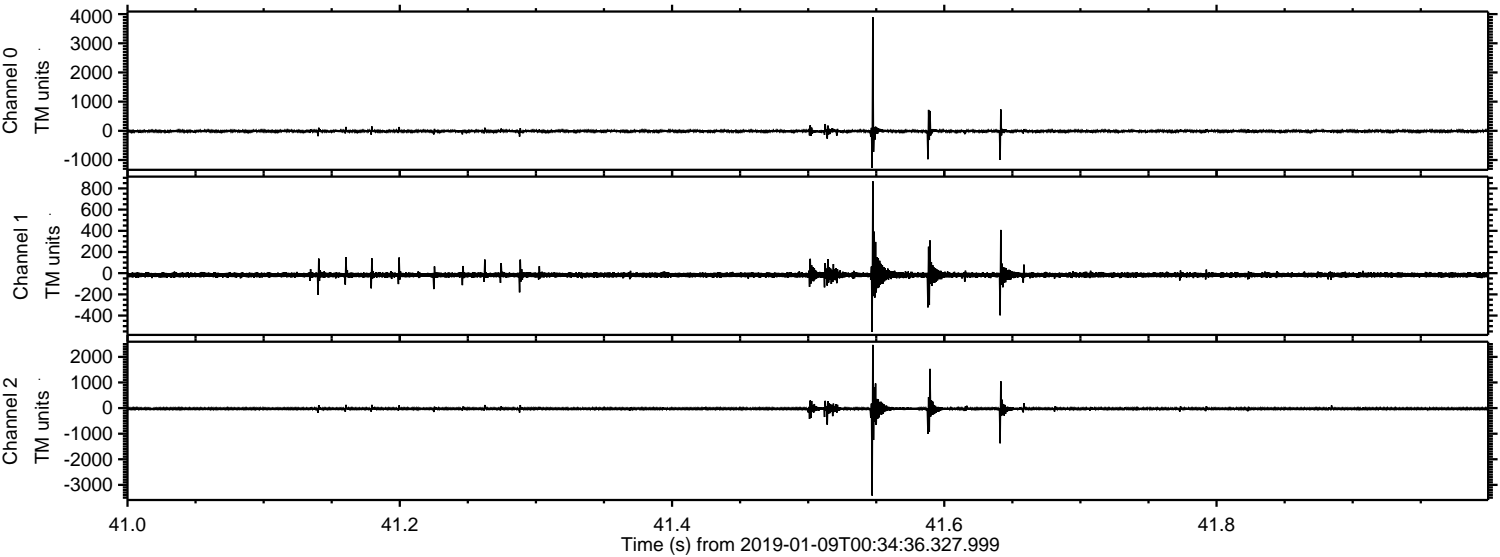
ELMAVAN 3D WAVEFORMS (Measured data sampled at 50 kHz) 51000 packets of 144 samples from 2019-01-09T00:34:36.327.999. Part 129/147

Processed Wed Jan 9 01:42:36 2019 by ELM ver.2012-10-06 from 001__elm20190109_003435__dat00.bin

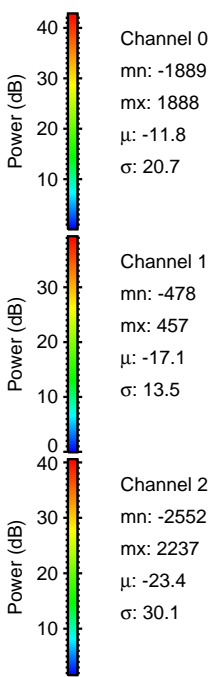
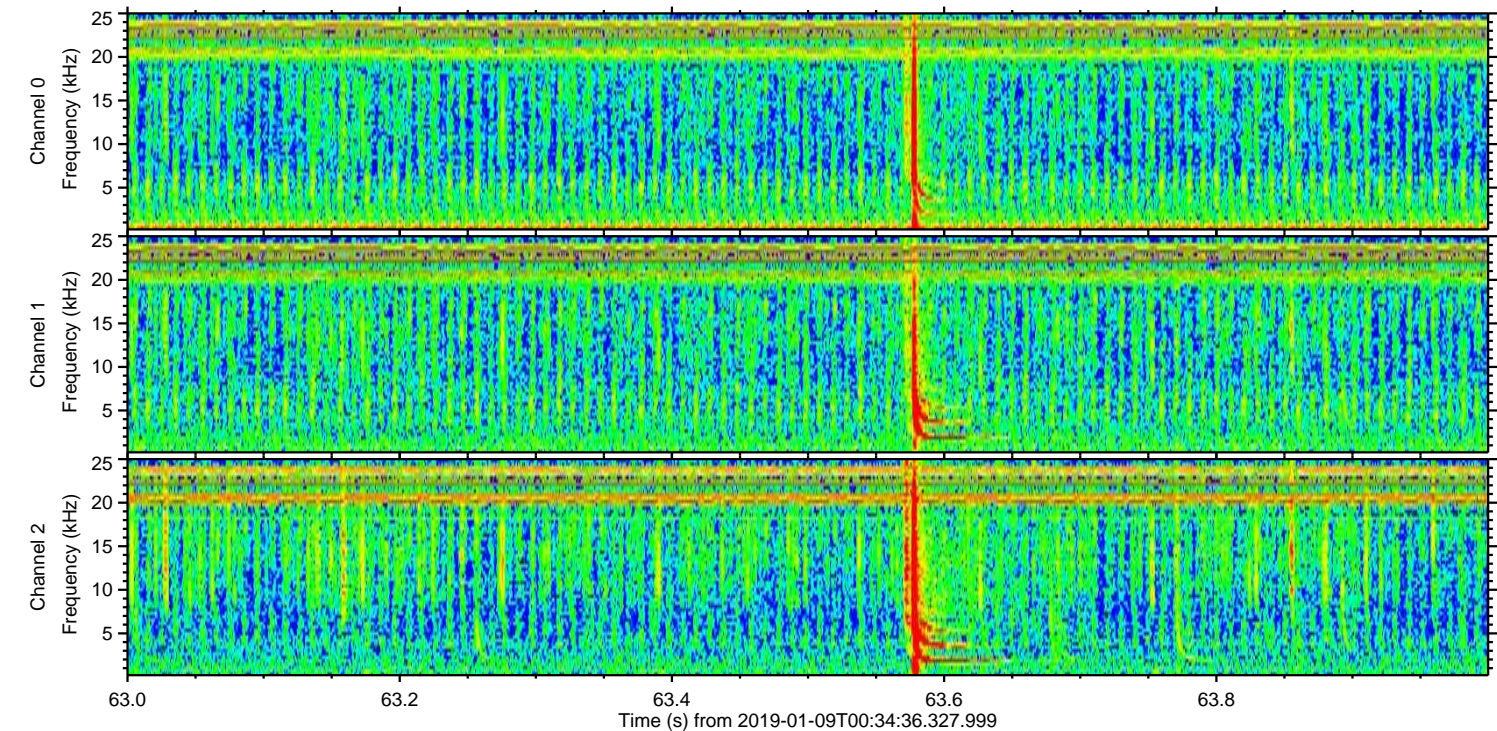
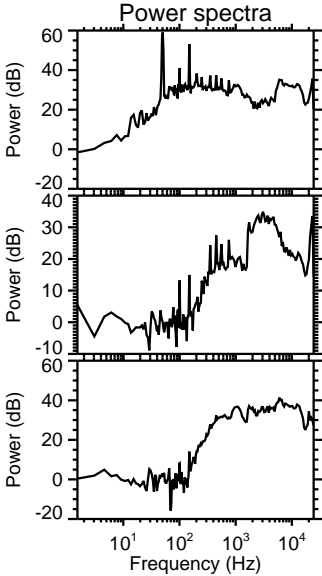
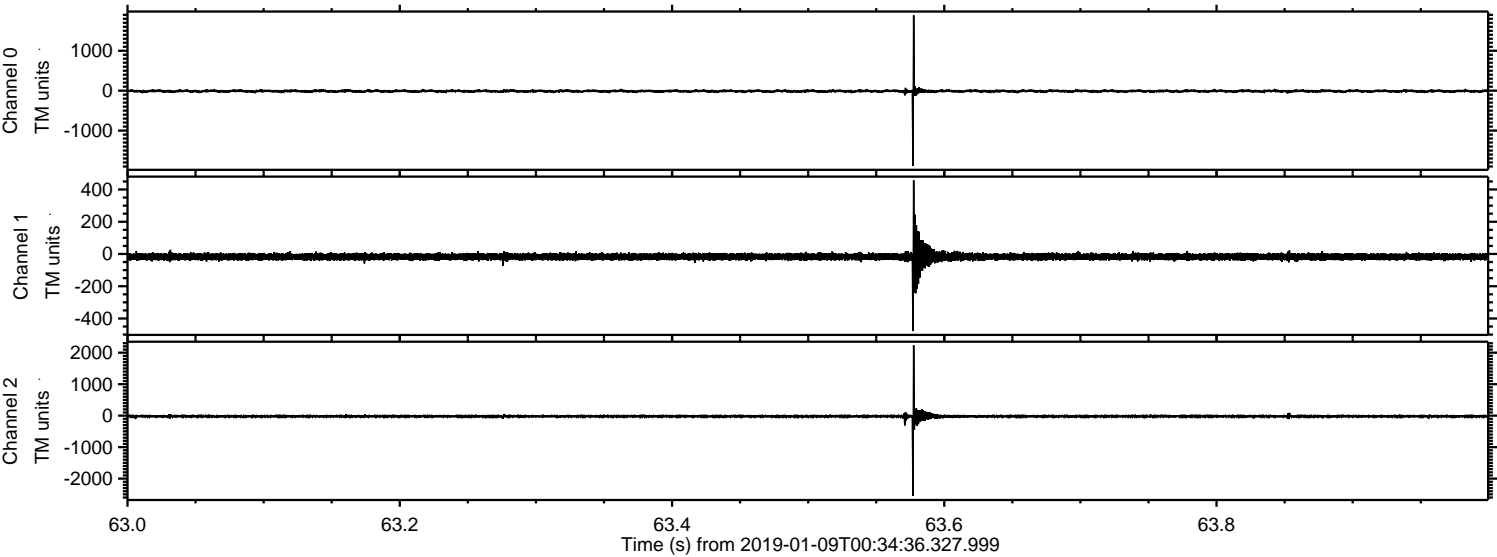


ELMAVAN 3D WAVEFORMS (Measured data sampled at 50 kHz) 51000 packets of 144 samples from 2019-01-09T00:34:36.327.999. Part 42/147

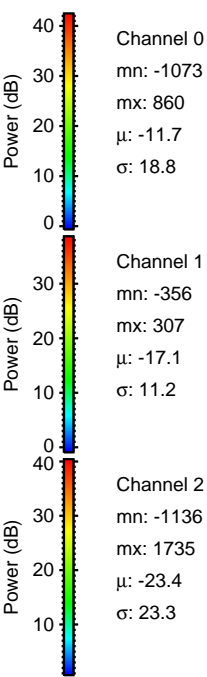
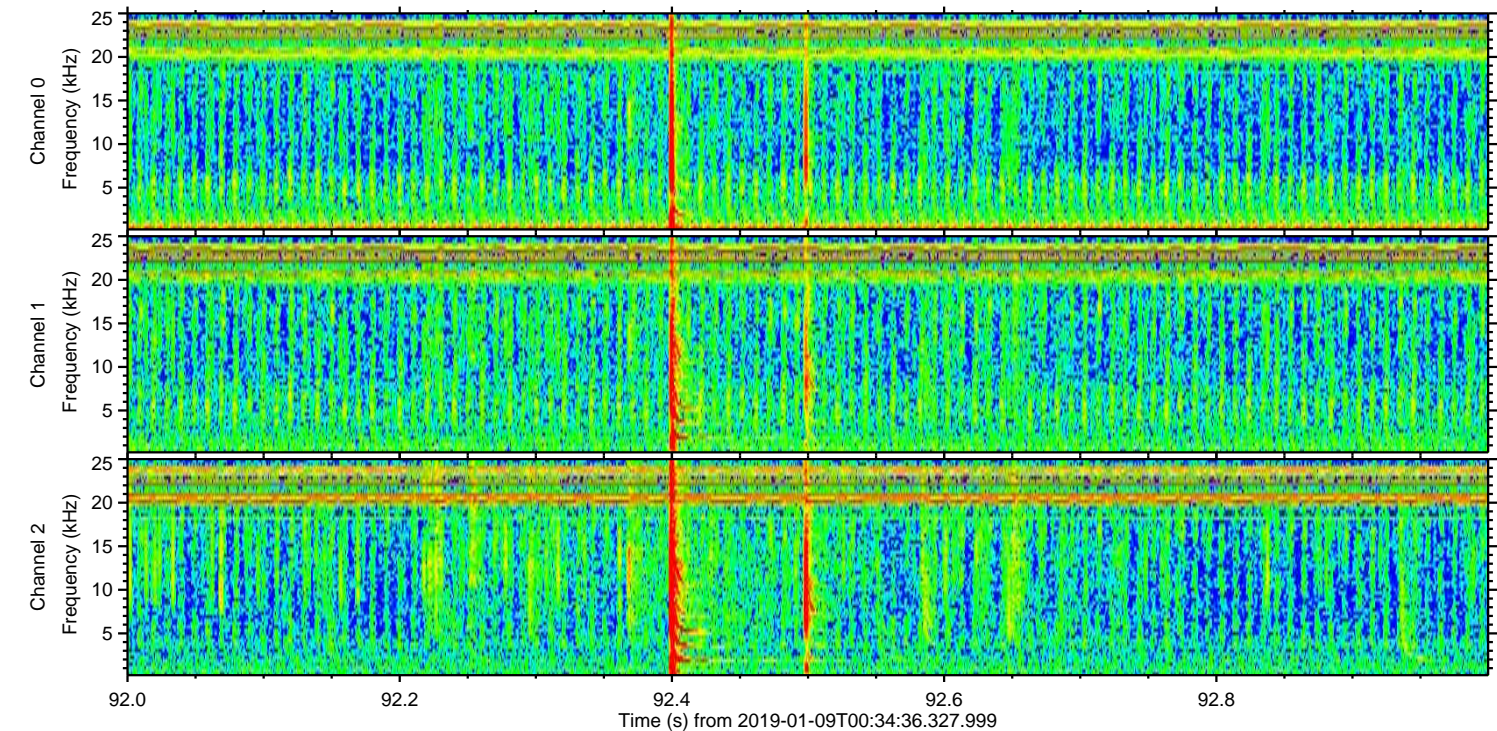
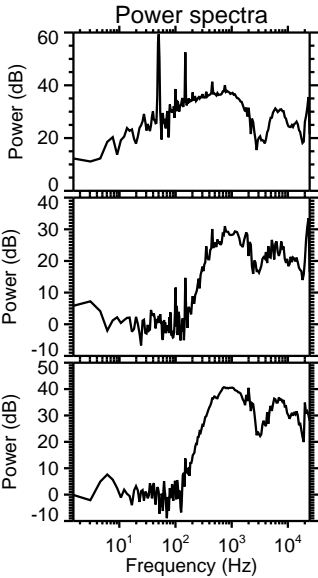
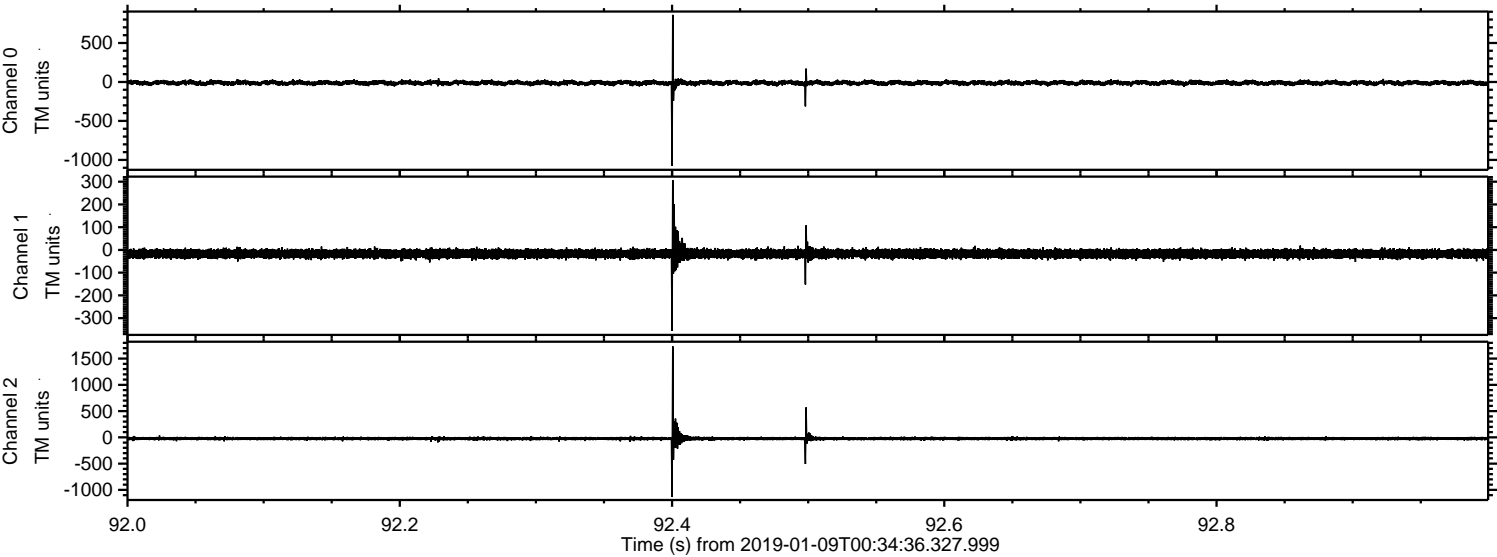
Processed Wed Jan 9 01:42:37 2019 by ELM ver.2012-10-06 from 001__elm20190109_003435__dat00.bin



Processed Wed Jan 9 01:42:38 2019 by ELM ver.2012-10-06 from 001__elm20190109_003435__dat00.bin

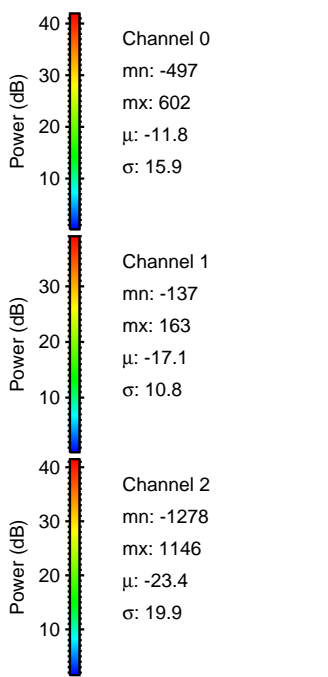
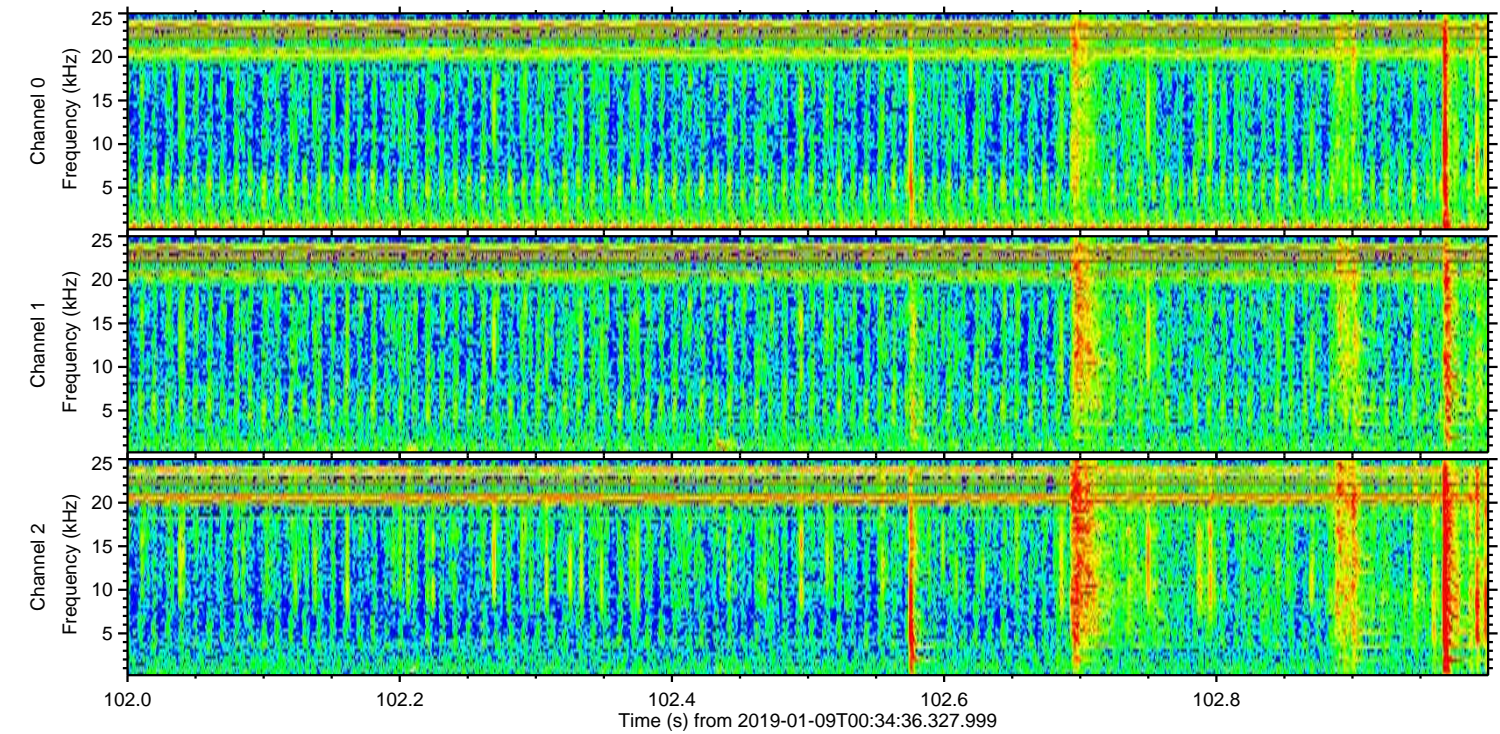
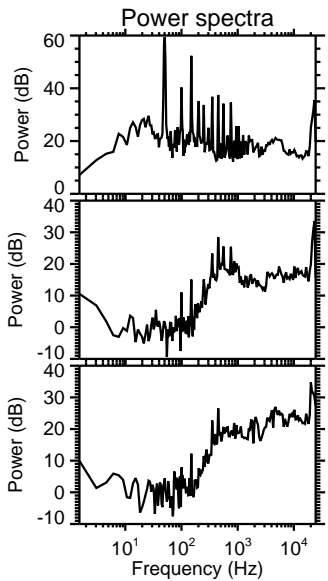
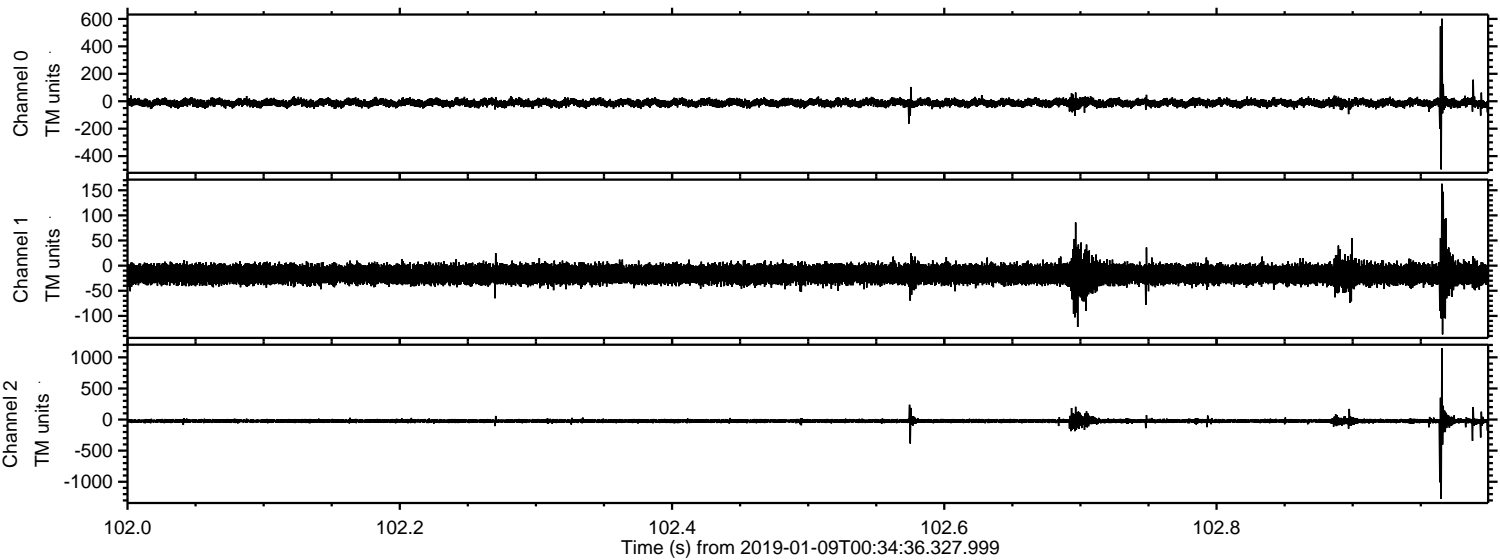


Processed Wed Jan 9 01:42:40 2019 by ELM ver.2012-10-06 from 001__elm20190109_003435__dat00.bin



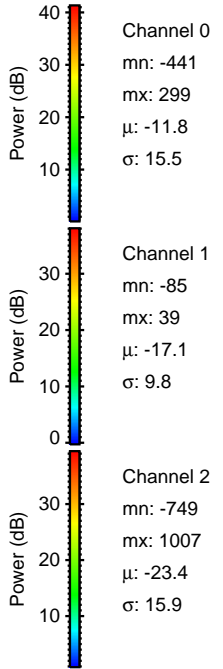
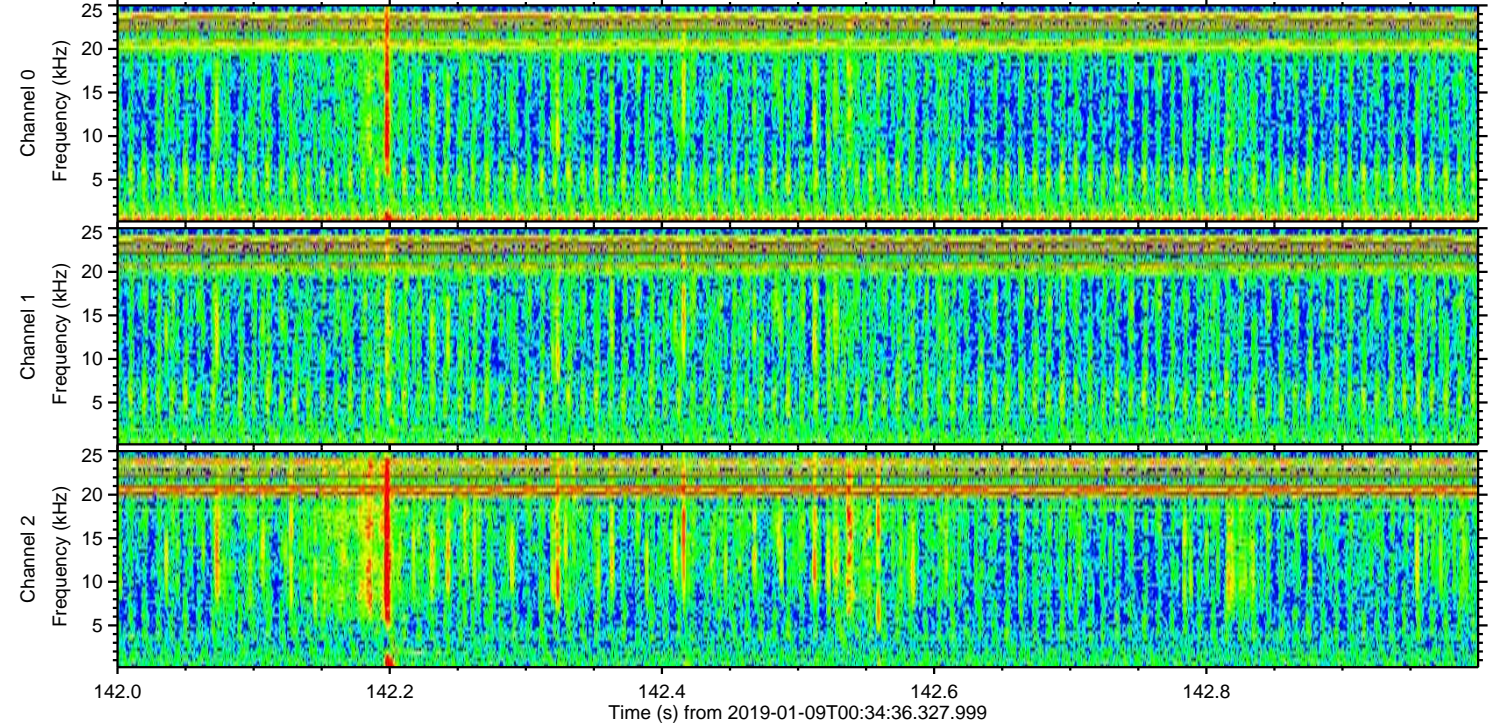
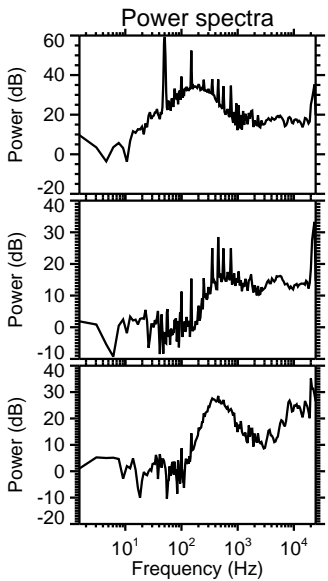
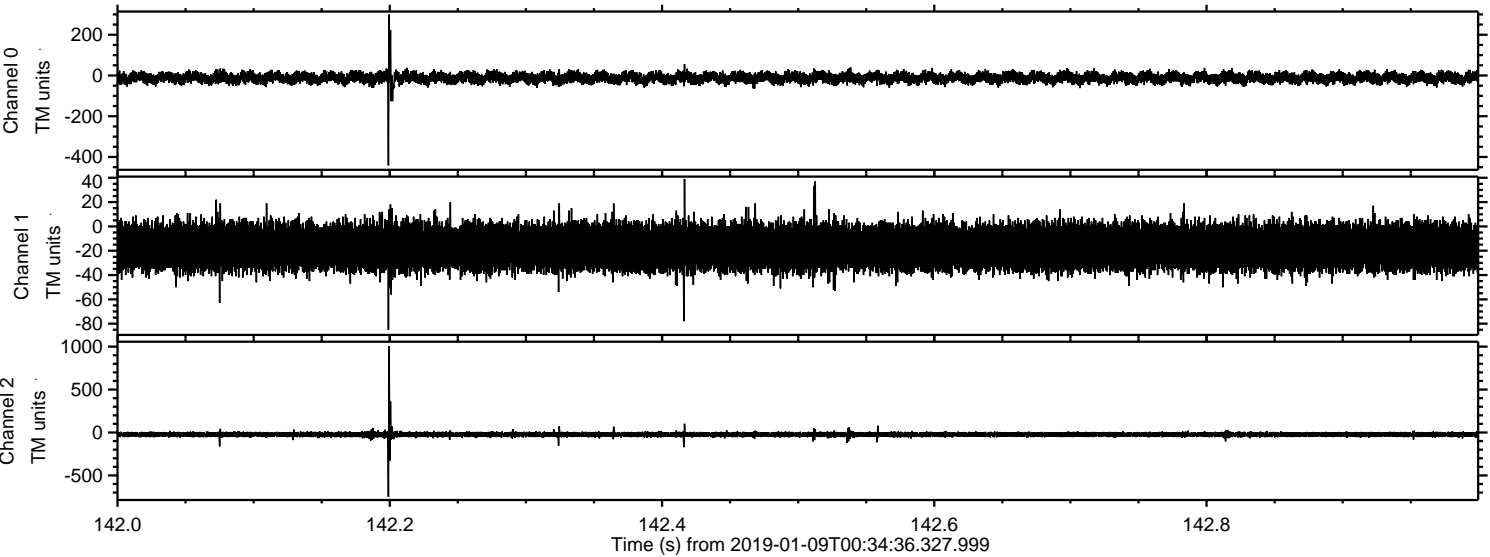
ELMAVAN 3D WAVEFORMS (Measured data sampled at 50 kHz) 51000 packets of 144 samples from 2019-01-09T00:34:36.327.999. Part 103/147

Processed Wed Jan 9 01:42:41 2019 by ELM ver.2012-10-06 from 001__elm20190109_003435__dat00.bin

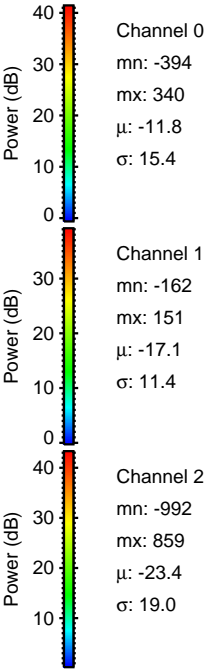
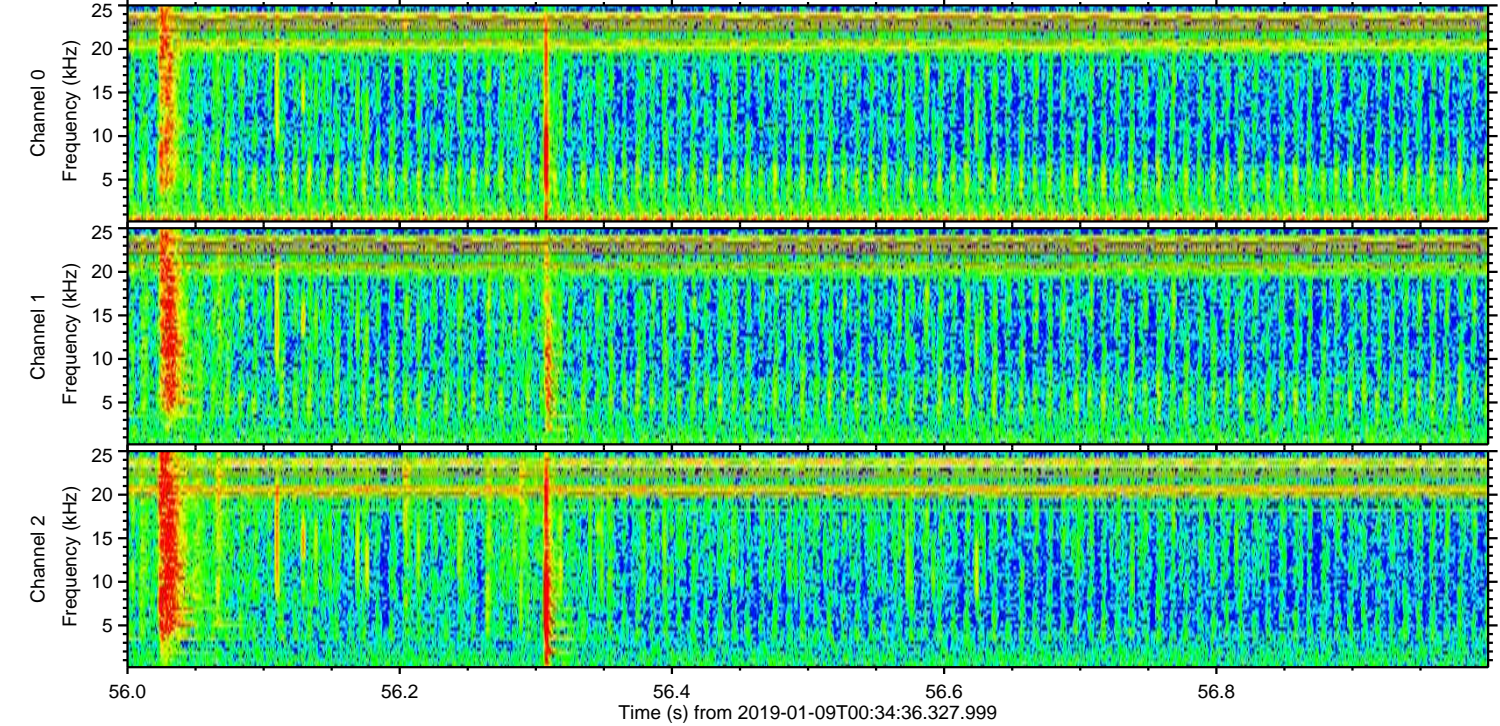
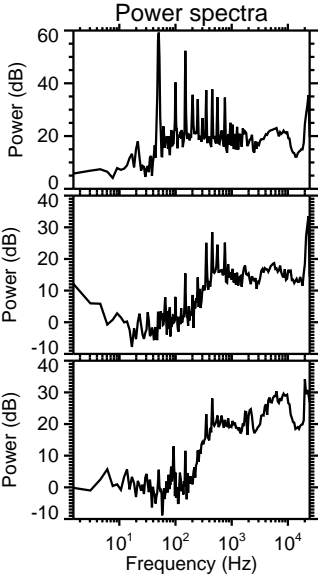
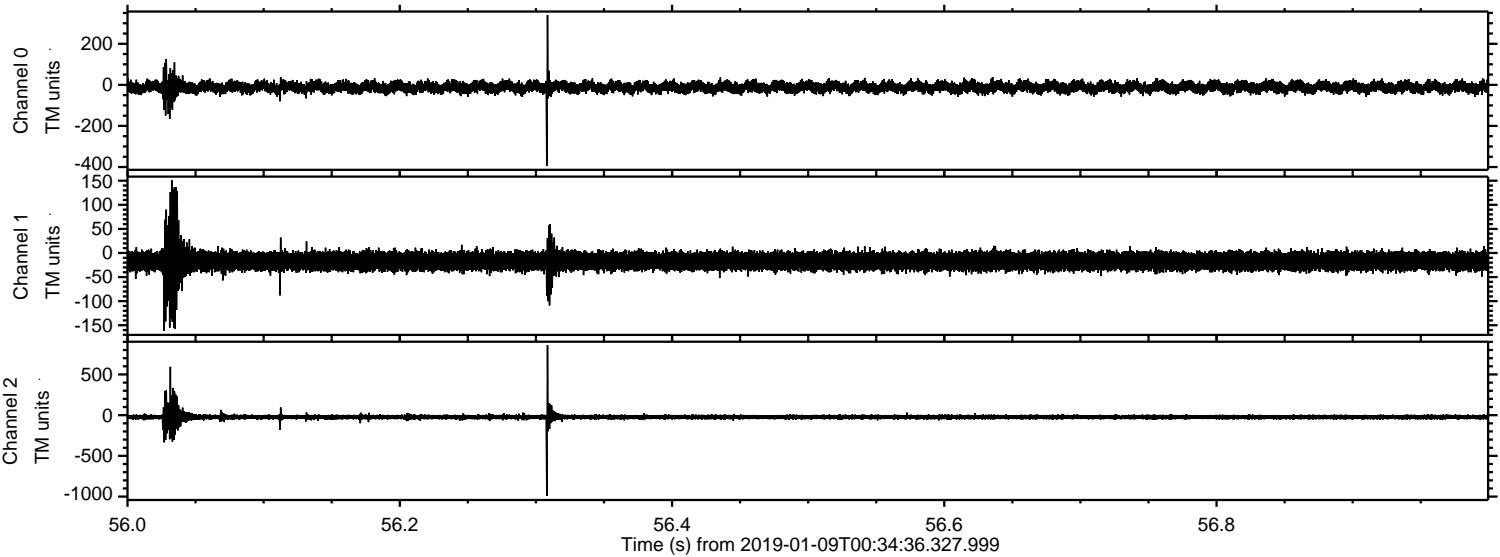


ELMAVAN 3D WAVEFORMS (Measured data sampled at 50 kHz) 51000 packets of 144 samples from 2019-01-09T00:34:36.327.999. Part 143/147

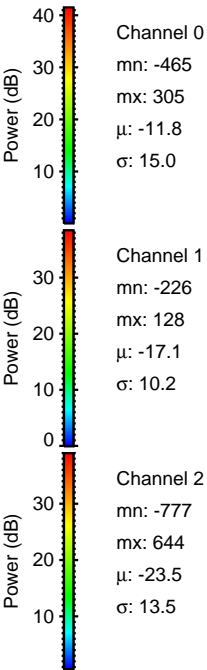
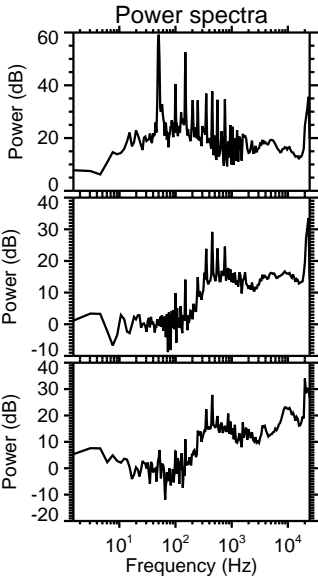
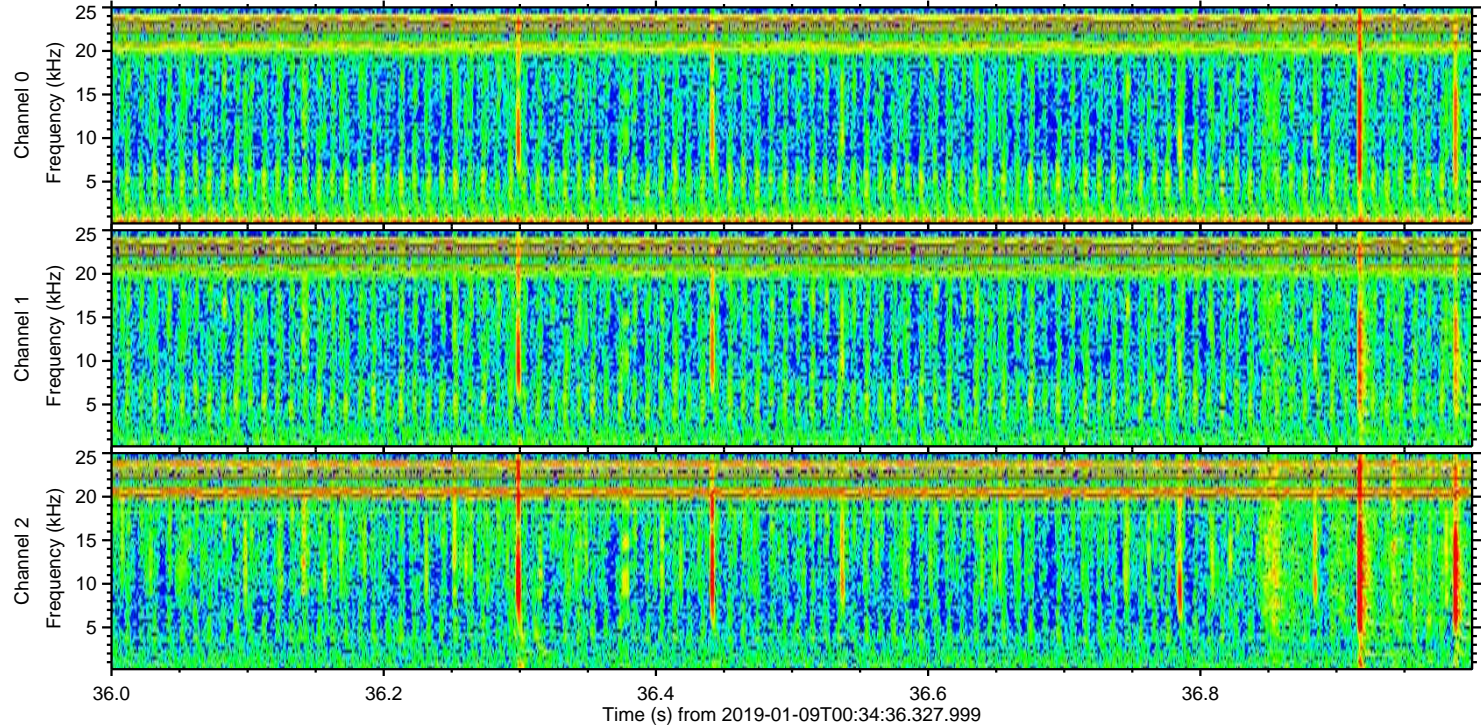
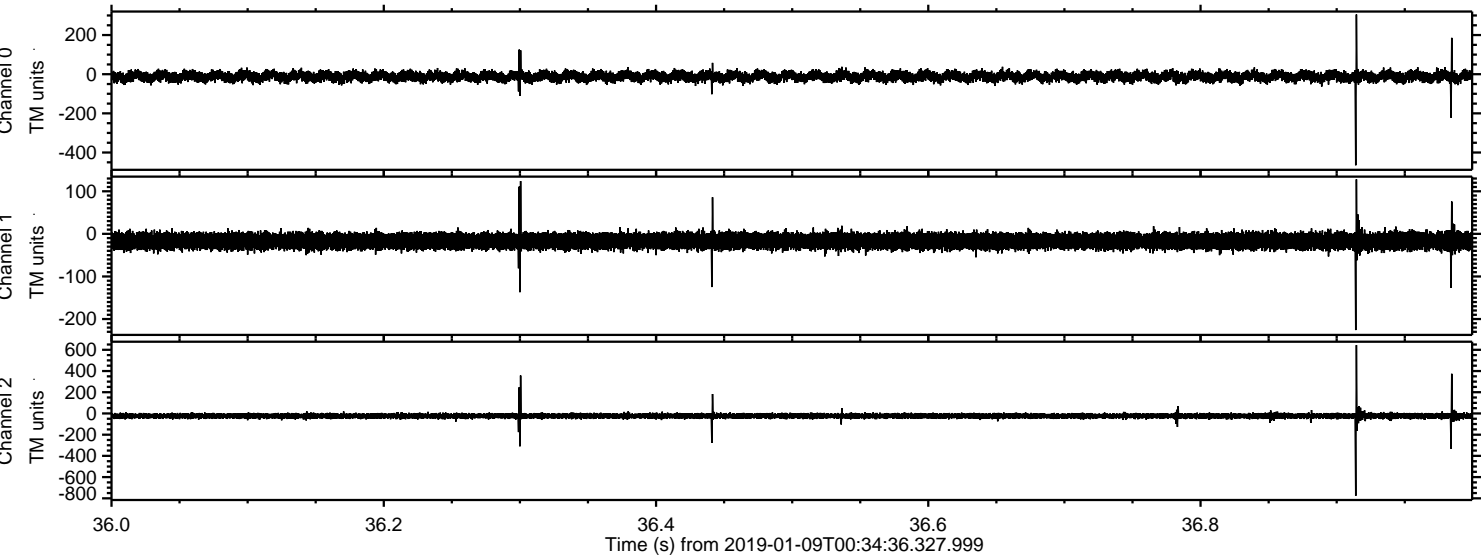
Processed Wed Jan 9 01:42:42 2019 by ELM ver.2012-10-06 from 001__elm20190109_003435__dat00.bin



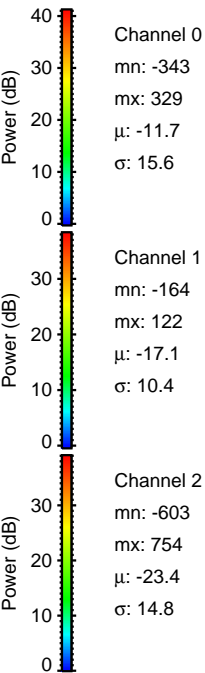
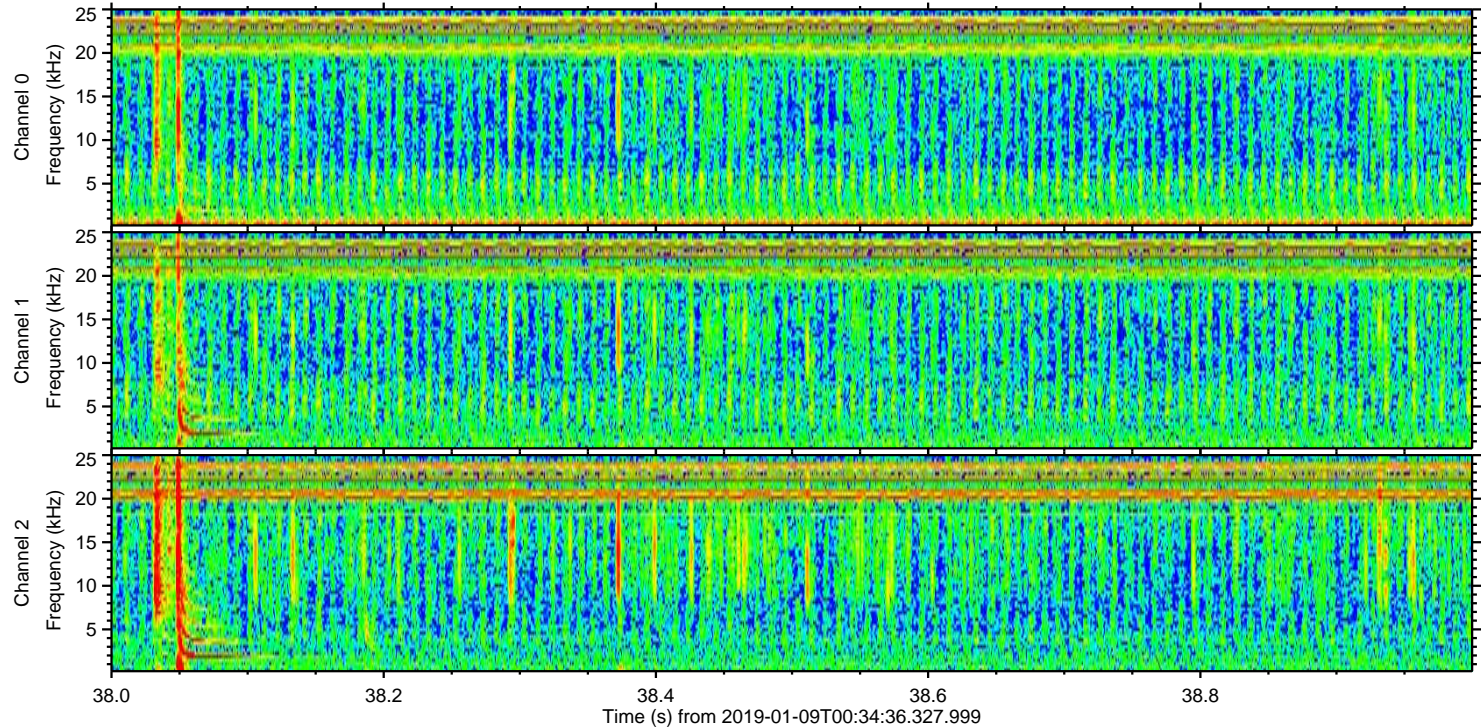
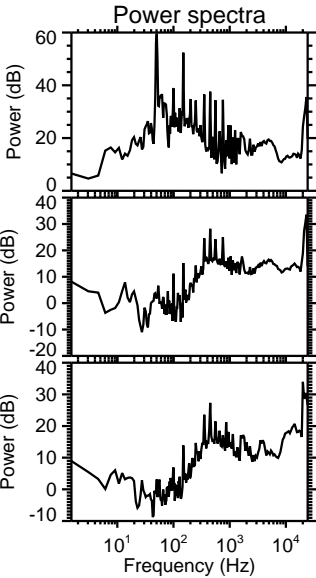
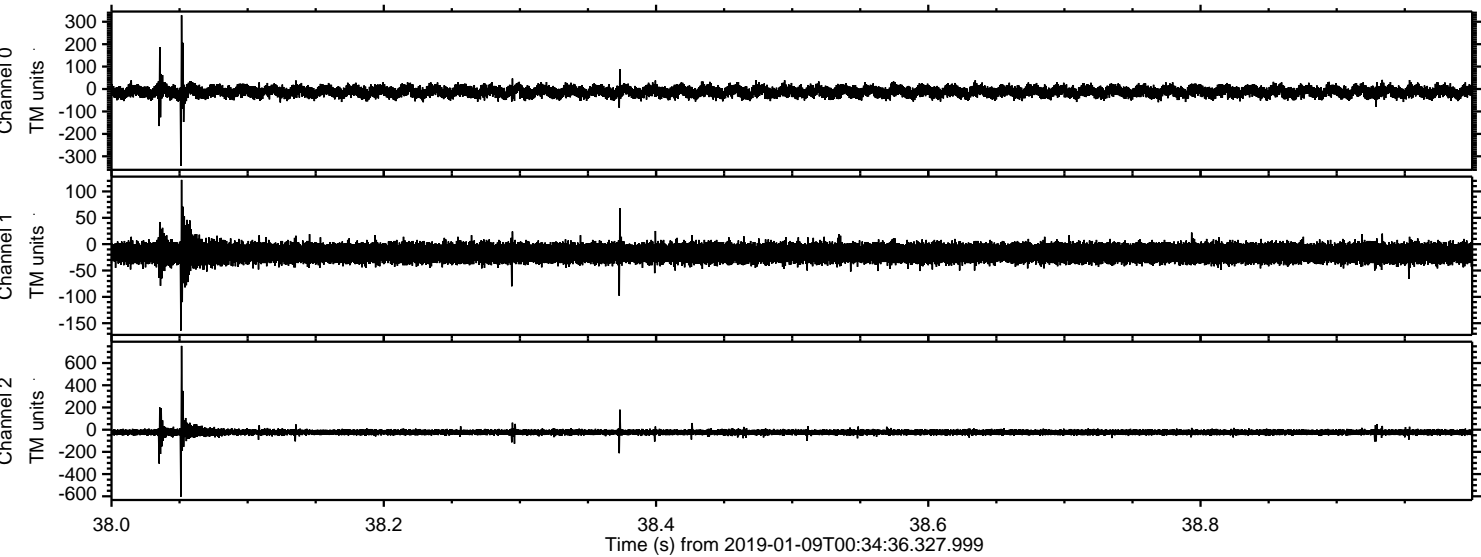
Processed Wed Jan 9 01:42:43 2019 by ELM ver.2012-10-06 from 001__elm20190109_003435__dat00.bin



Processed Wed Jan 9 01:42:44 2019 by ELM ver.2012-10-06 from 001__elm20190109_003435__dat00.bin



Processed Wed Jan 9 01:42:45 2019 by ELM ver.2012-10-06 from 001__elm20190109_003435__dat00.bin



Processed Wed Jan 9 01:42:46 2019 by ELM ver.2012-10-06 from 001__elm20190109_003435__dat00.bin

