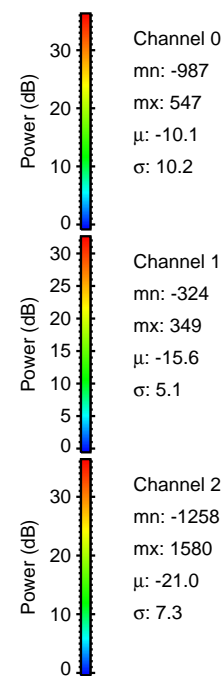
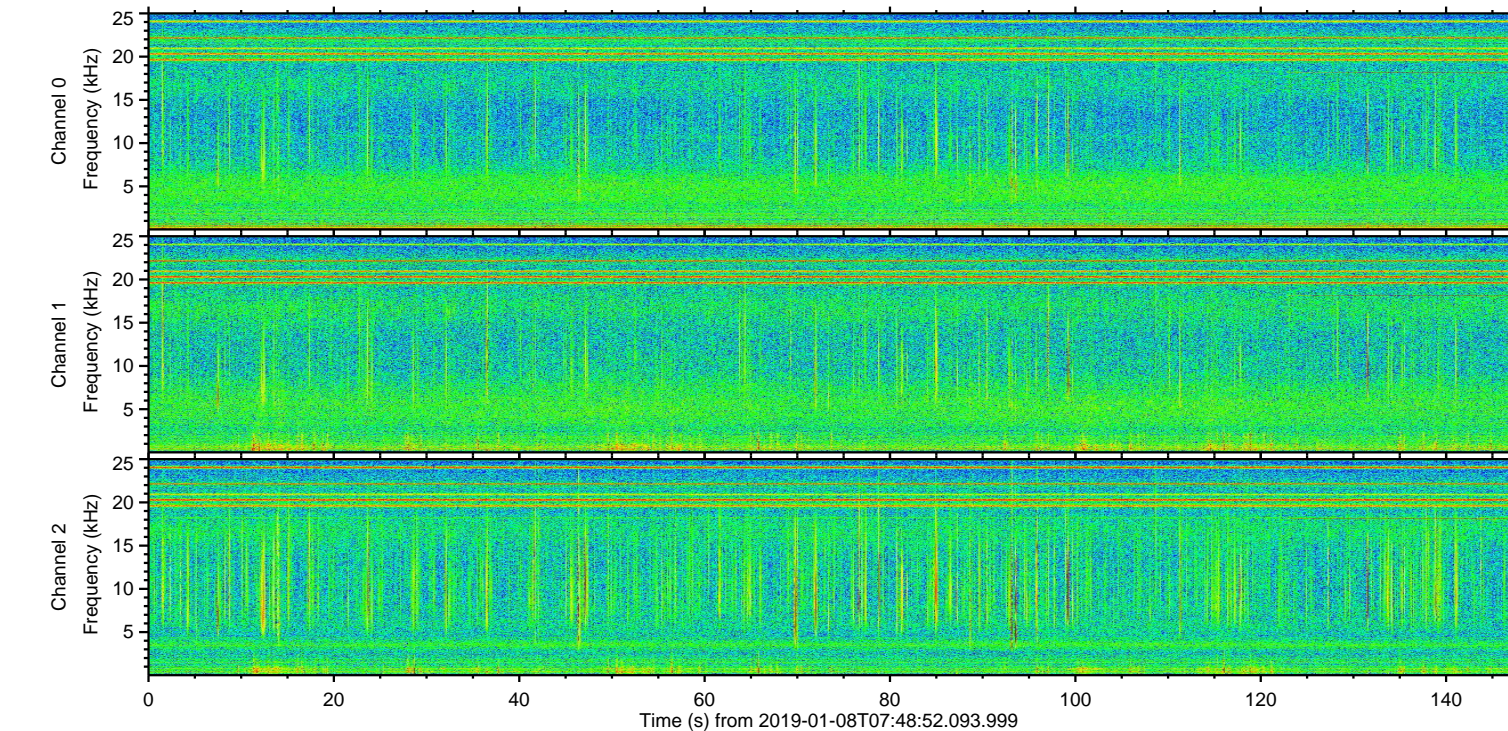
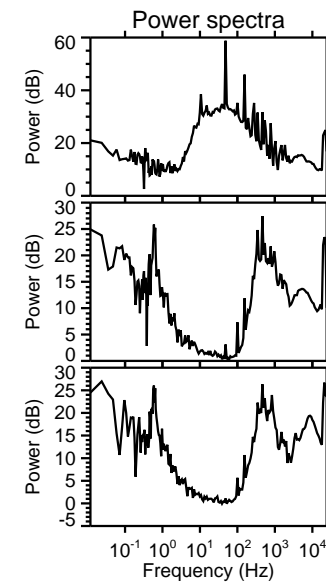
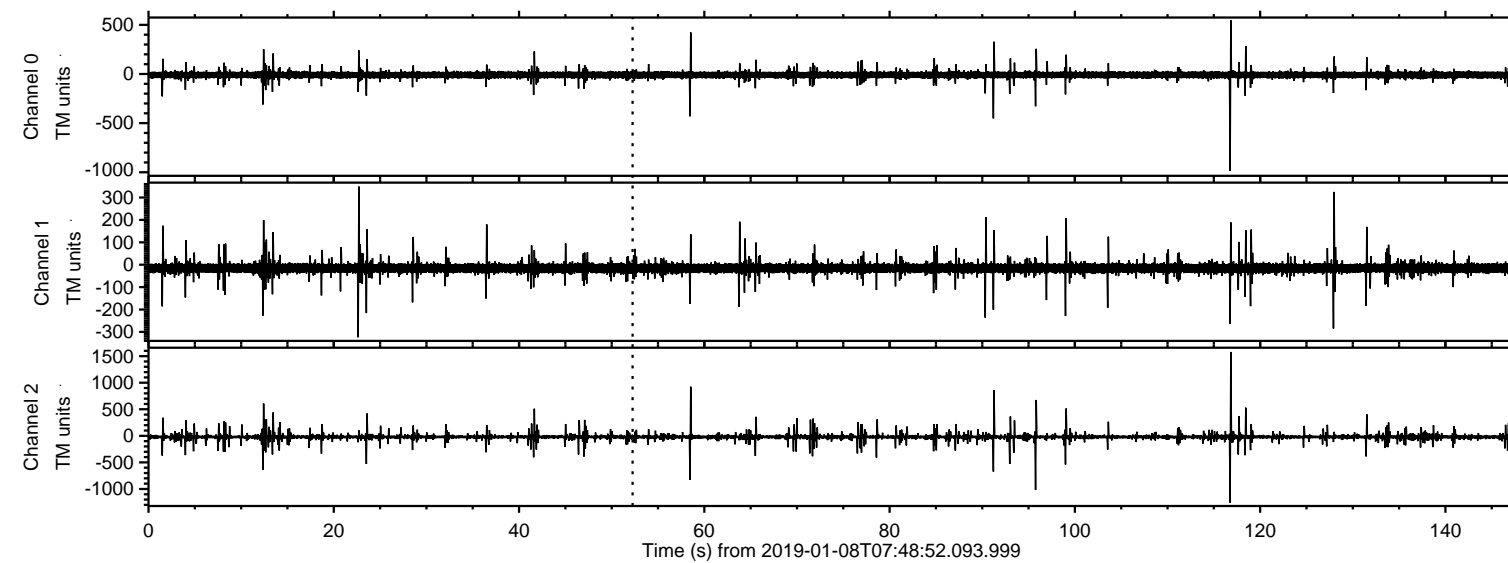


# ELMAVAN 3D WAVEFORMS (Measured data sampled at 50 kHz) 50999 packets of 144 samples from 2019-01-08T07:48:52.093.999.

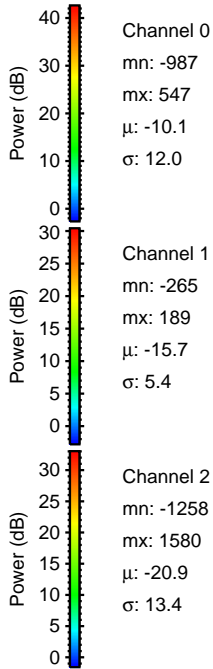
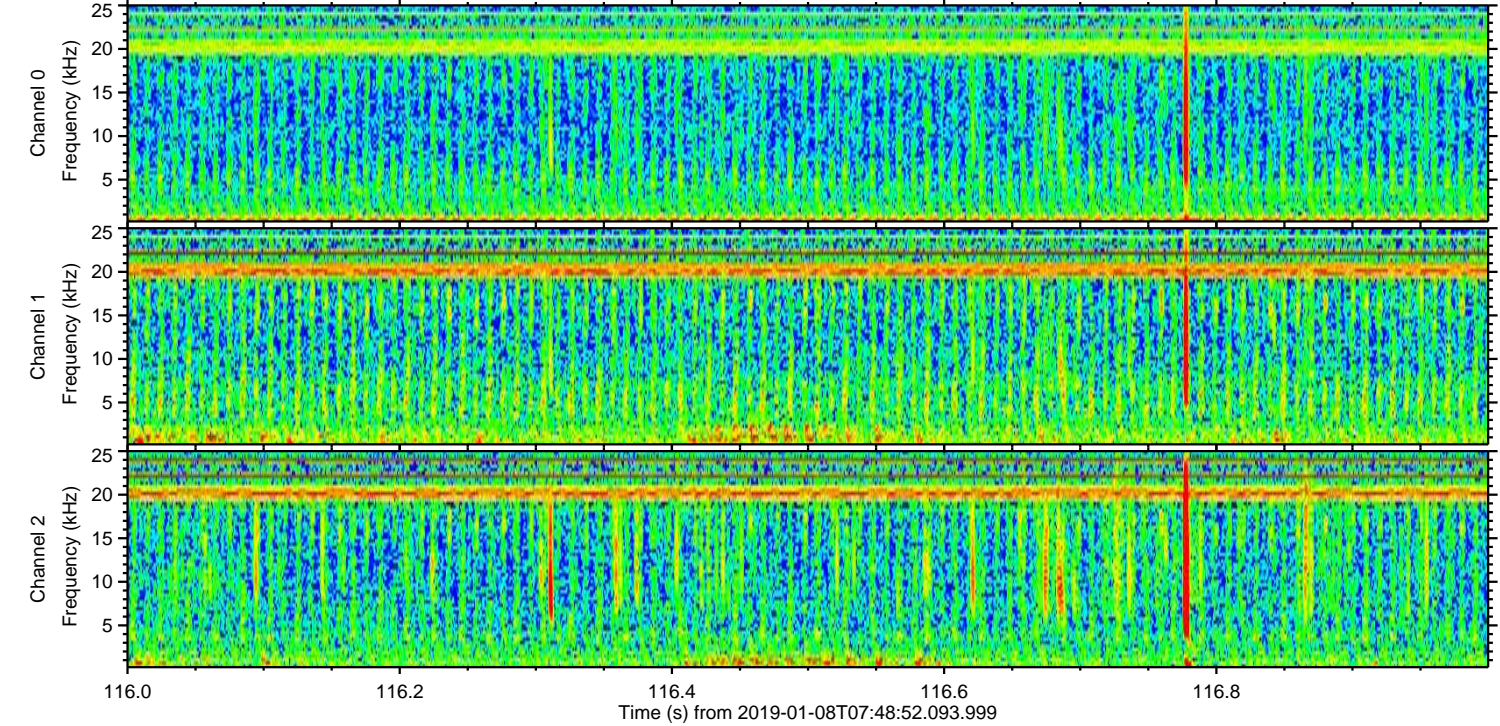
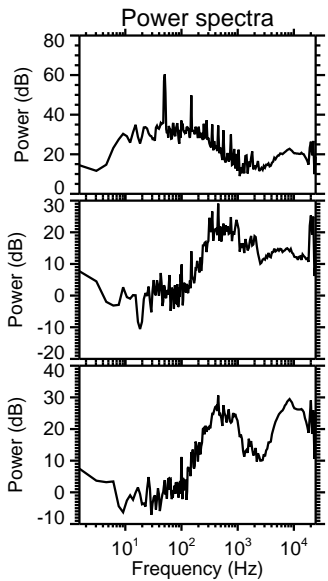
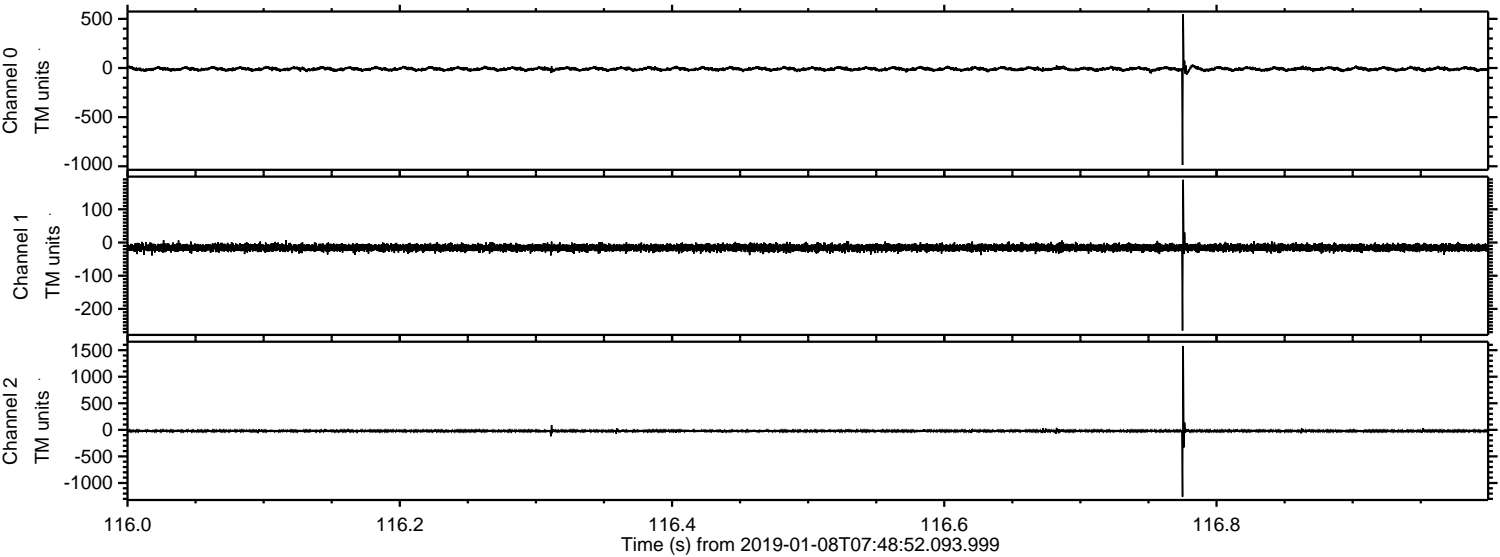
Processed Tue Jan 8 08:56:33 2019 by ELM ver.2012-10-06 from 001\_\_elm20190108\_074851\_\_dat00.bin





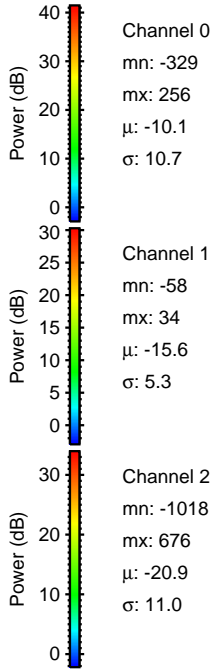
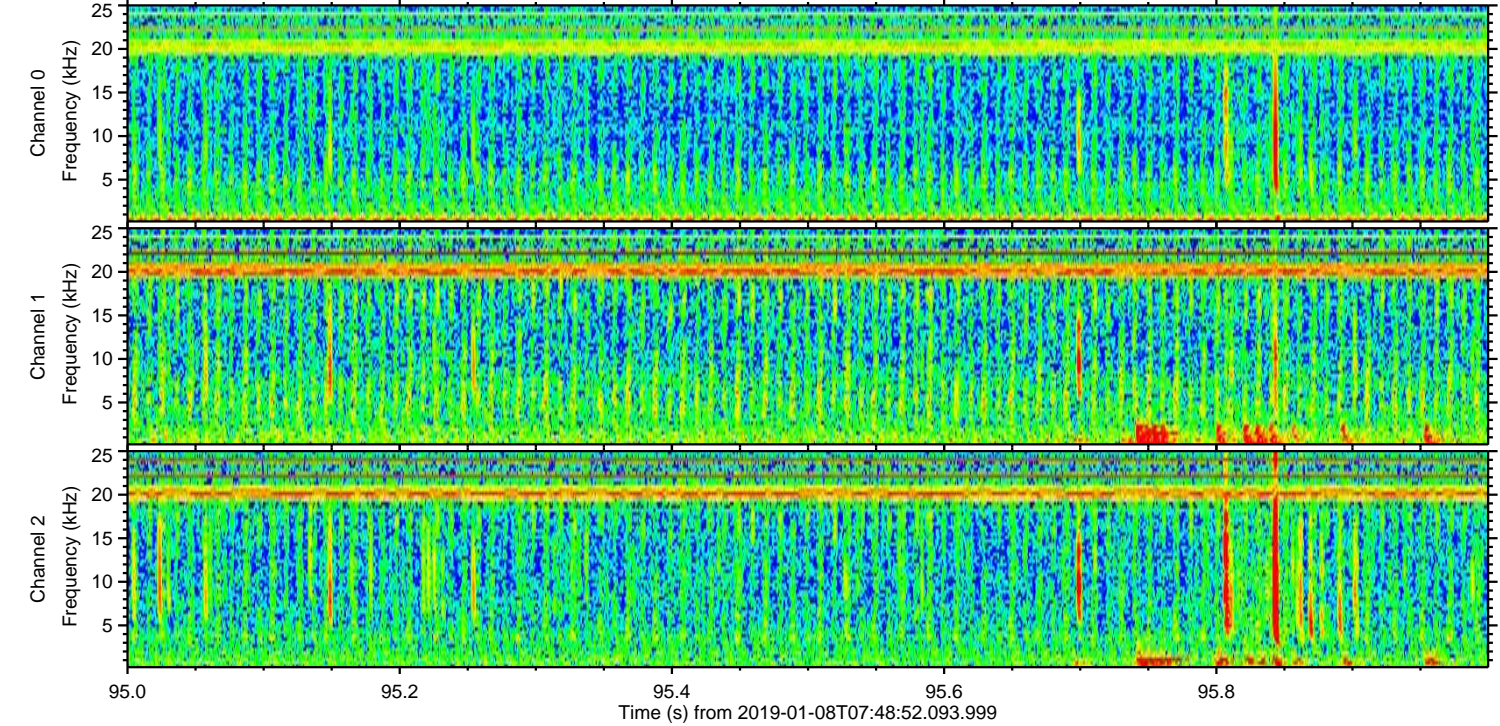
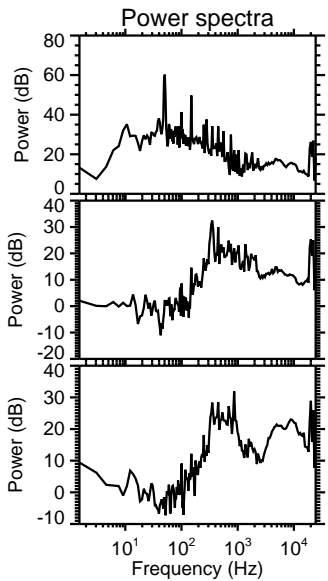
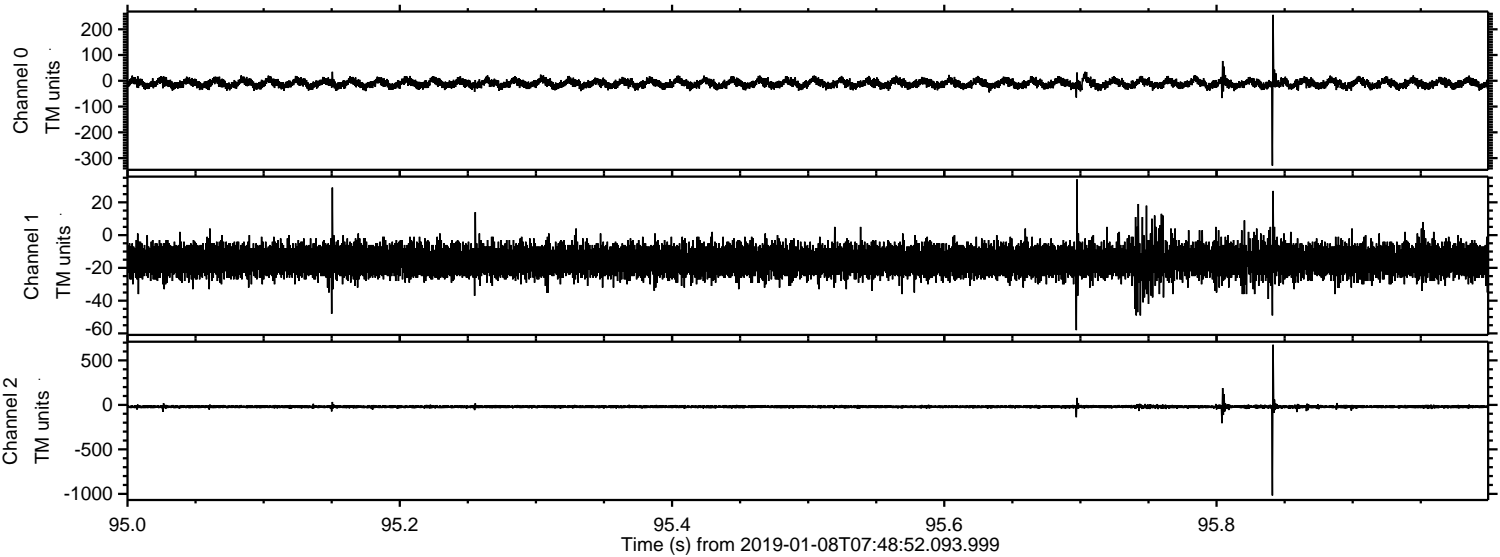
ELMAVAN 3D WAVEFORMS (Measured data sampled at 50 kHz) 50999 packets of 144 samples from 2019-01-08T07:48:52.093.999. Part 117/147

Processed Tue Jan 8 08:56:40 2019 by ELM ver.2012-10-06 from 001\_\_elm20190108\_074851\_\_dat00.bin



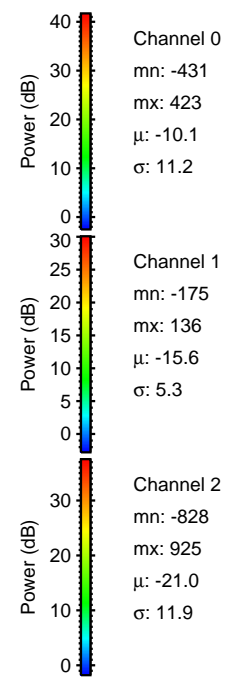
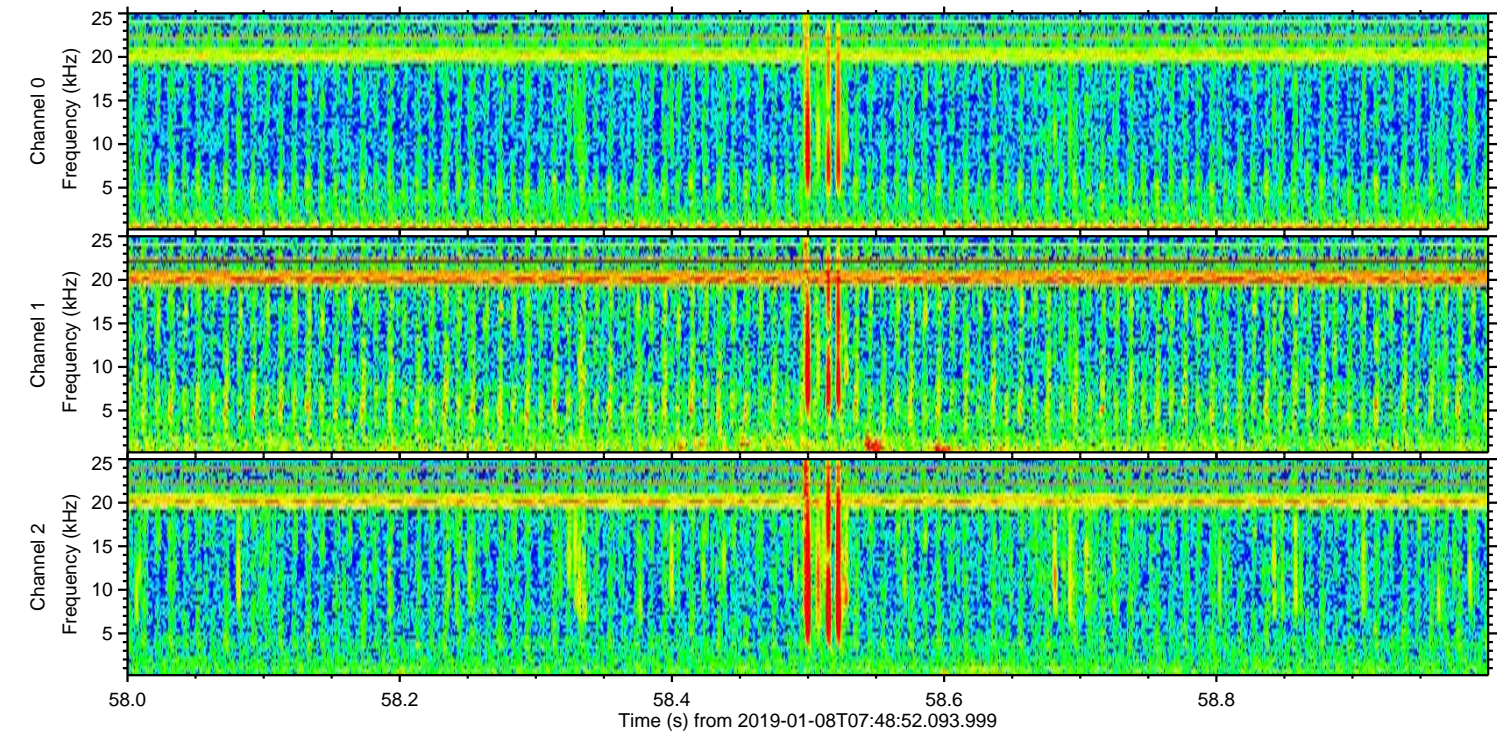
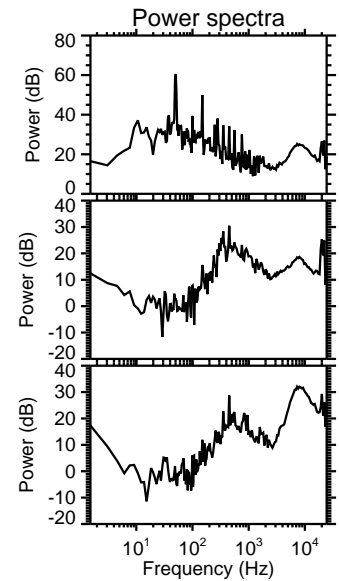
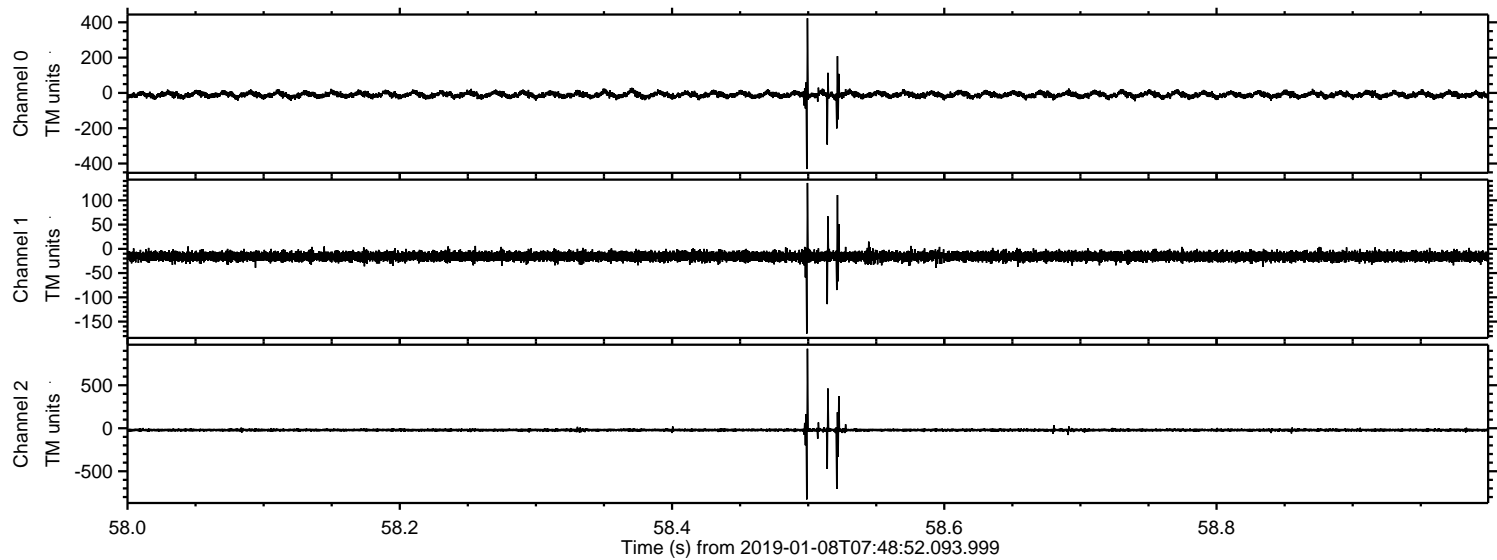


Processed Tue Jan 8 08:56:41 2019 by ELM ver.2012-10-06 from 001\_\_elm20190108\_074851\_\_dat00.bin



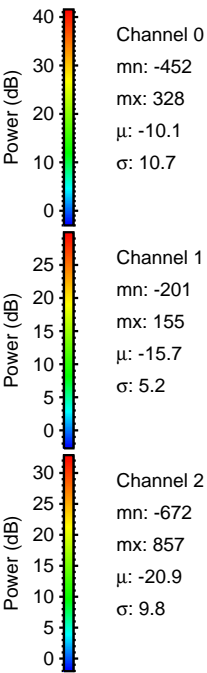
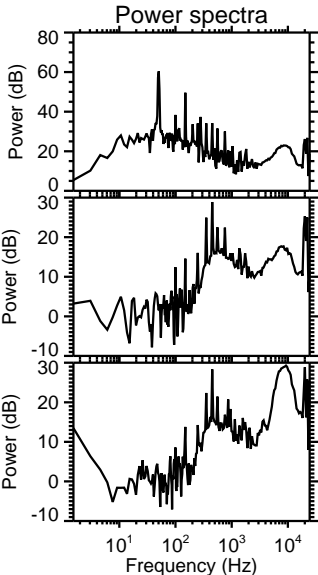
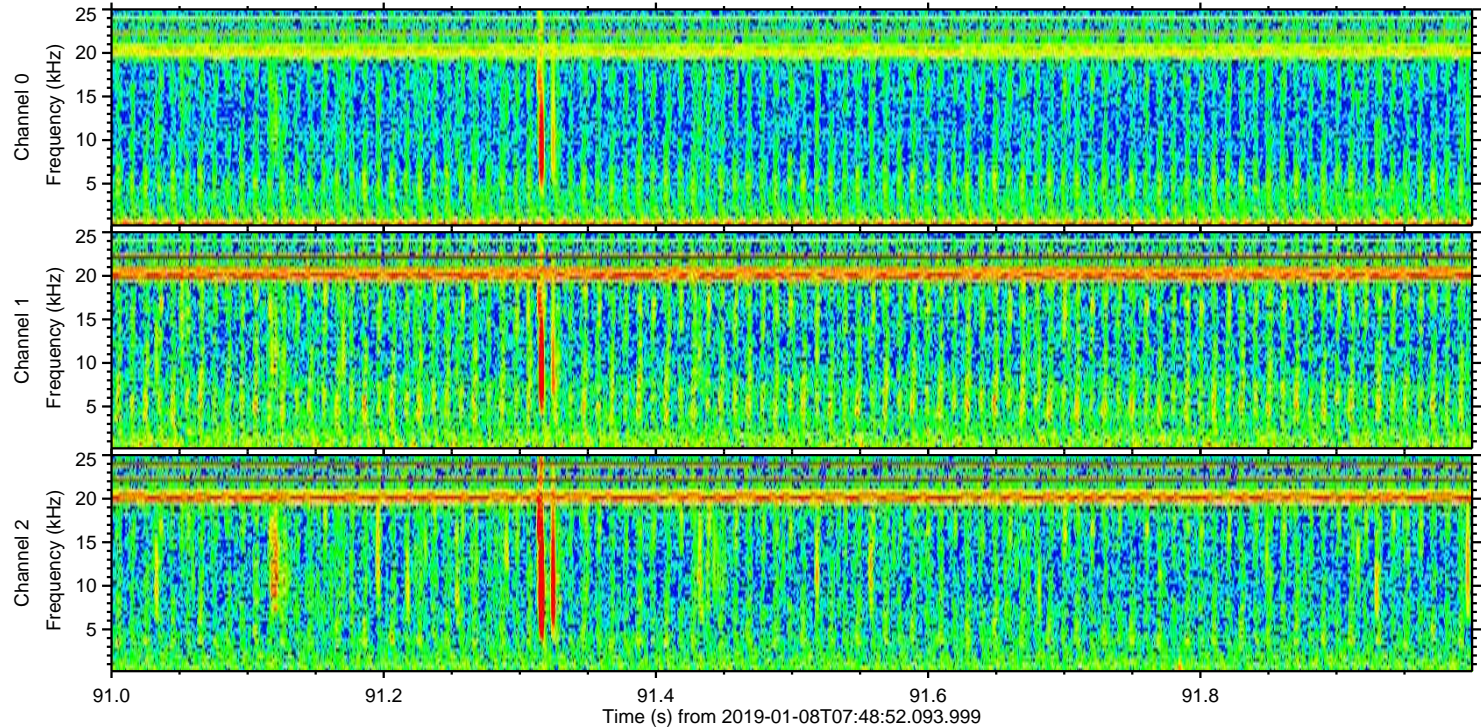
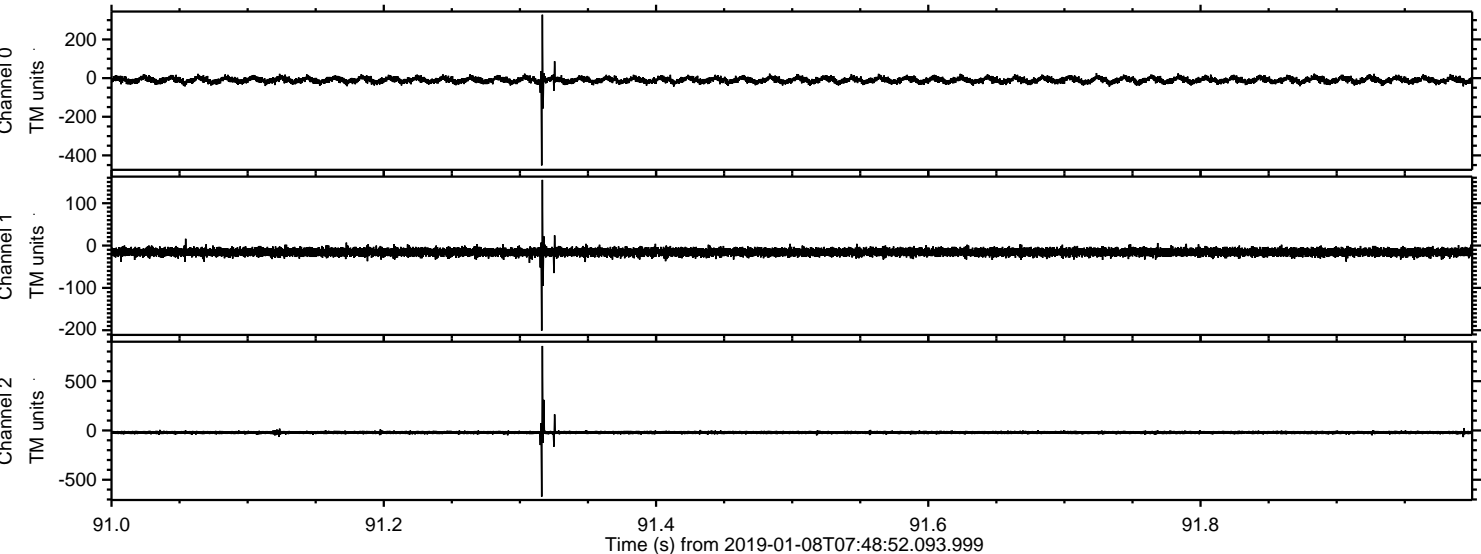


Processed Tue Jan 8 08:56:42 2019 by ELM ver.2012-10-06 from 001\_\_elm20190108\_074851\_\_dat00.bin



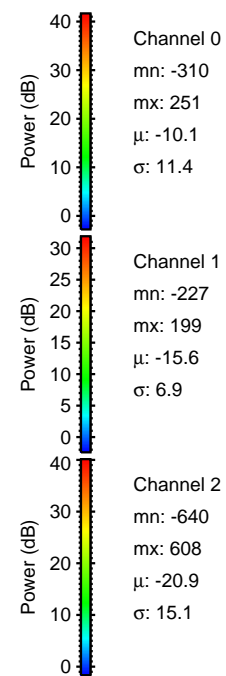
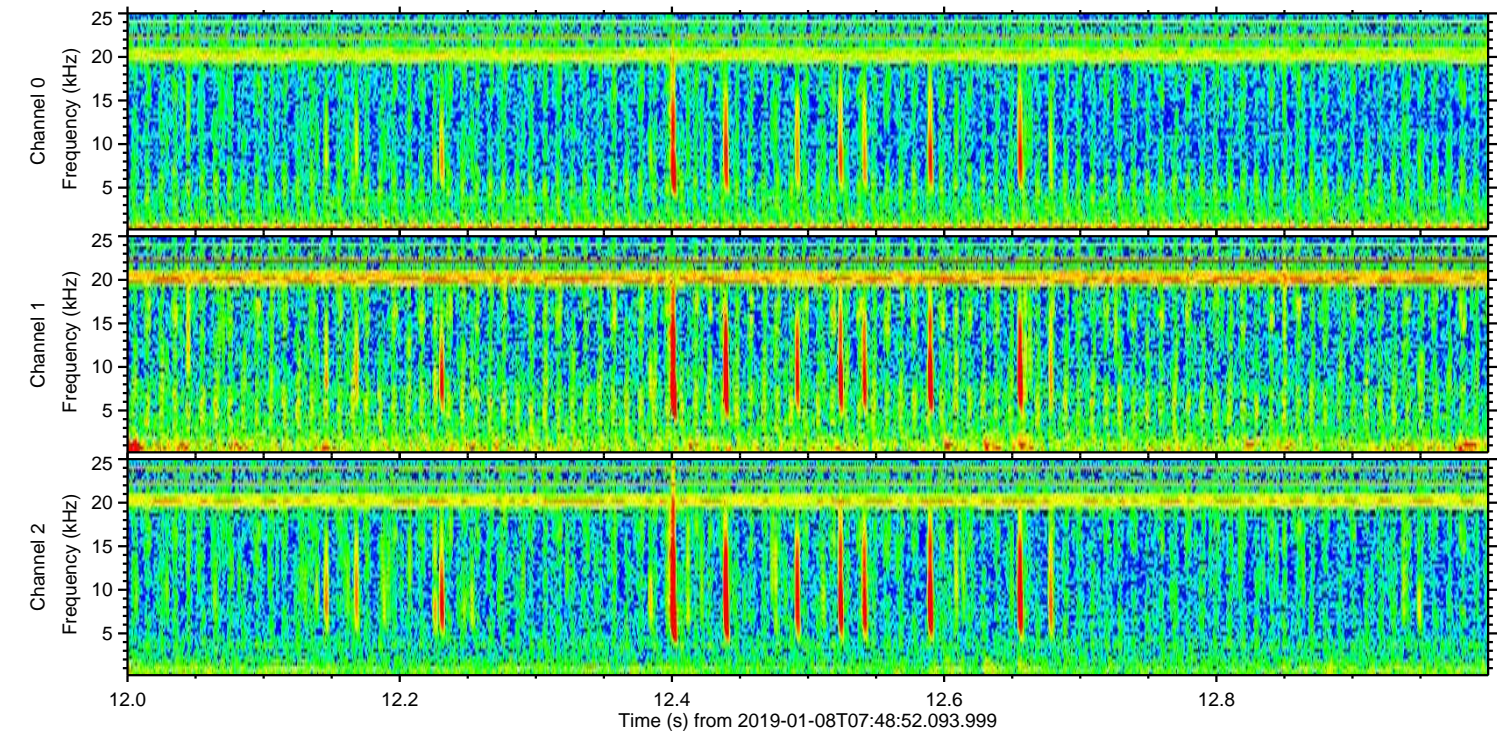
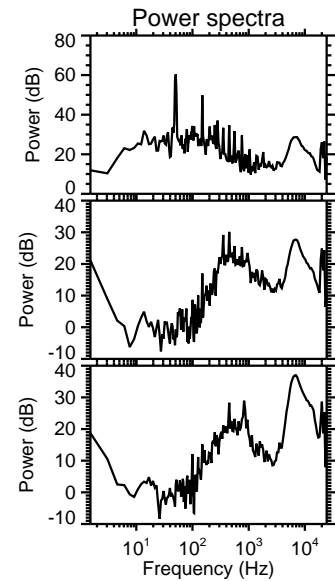
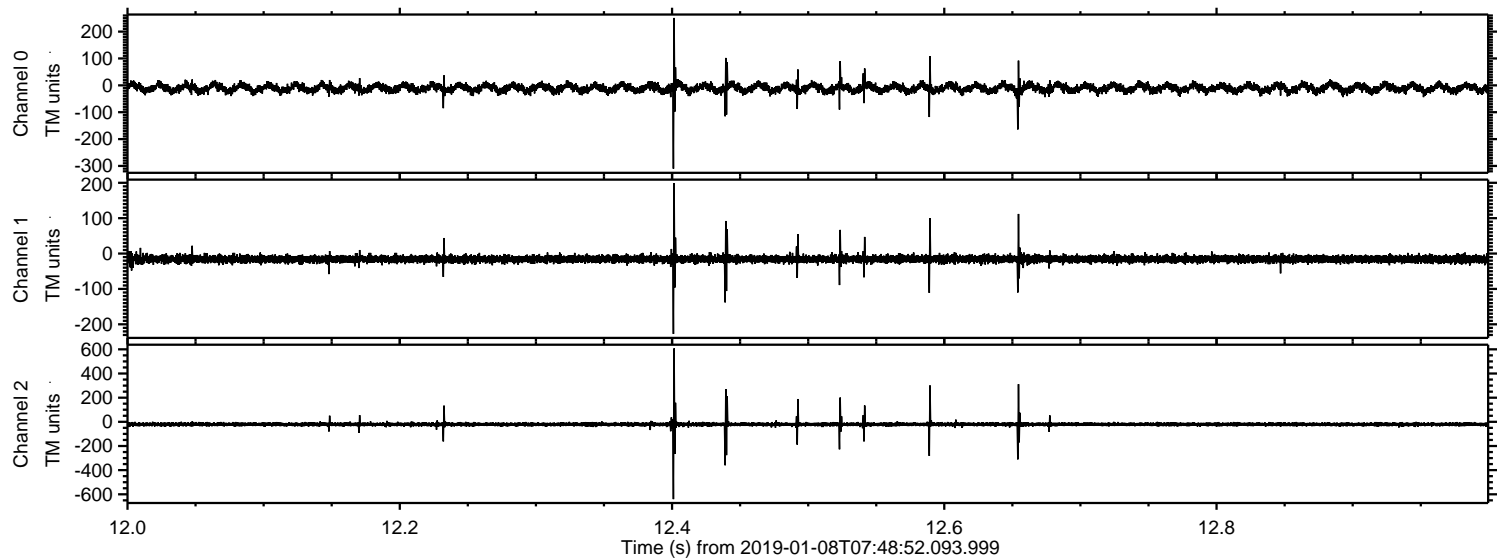


Processed Tue Jan 8 08:56:42 2019 by ELM ver.2012-10-06 from 001\_\_elm20190108\_074851\_\_dat00.bin



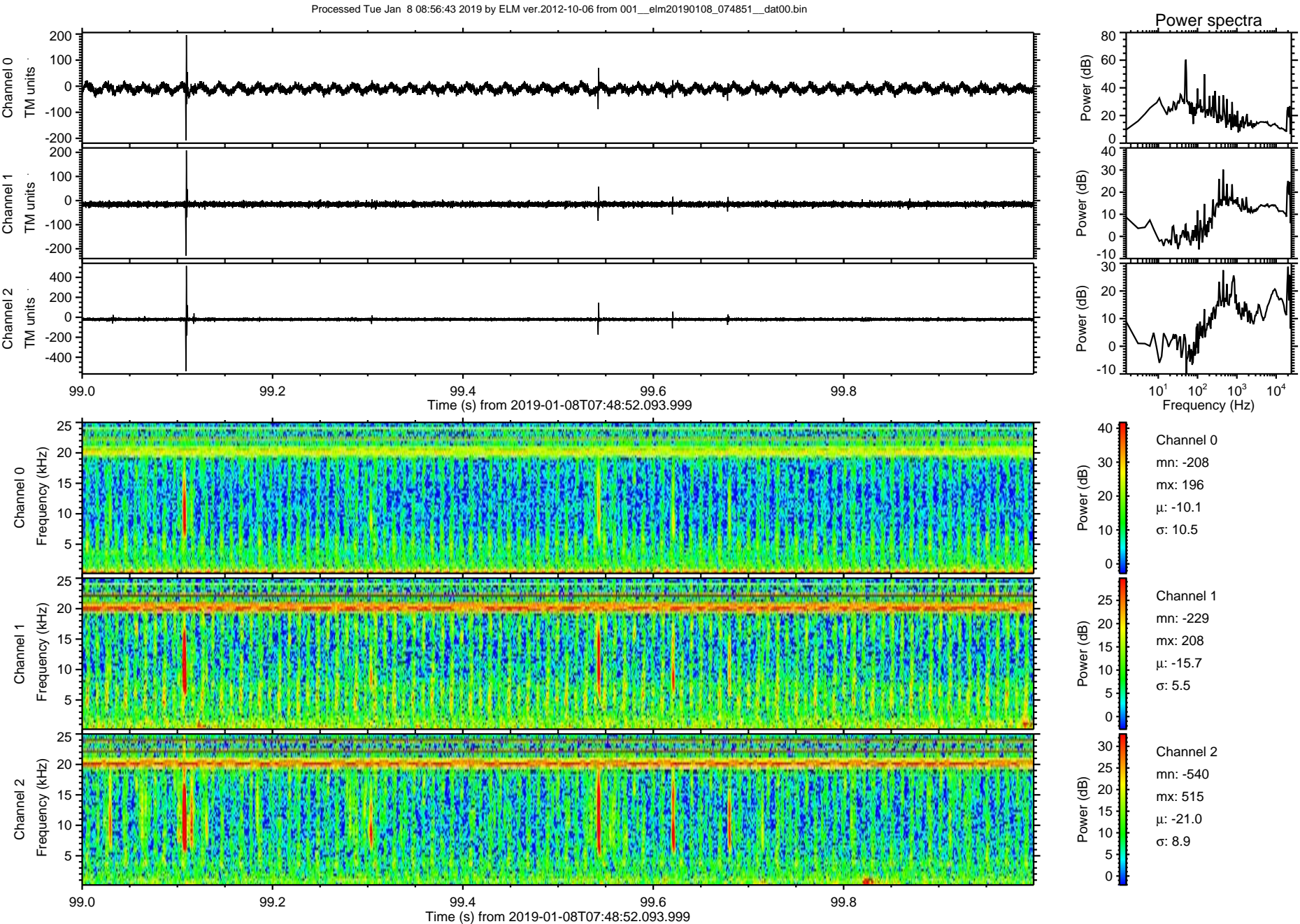


Processed Tue Jan 8 08:56:43 2019 by ELM ver.2012-10-06 from 001\_\_elm20190108\_074851\_\_dat00.bin



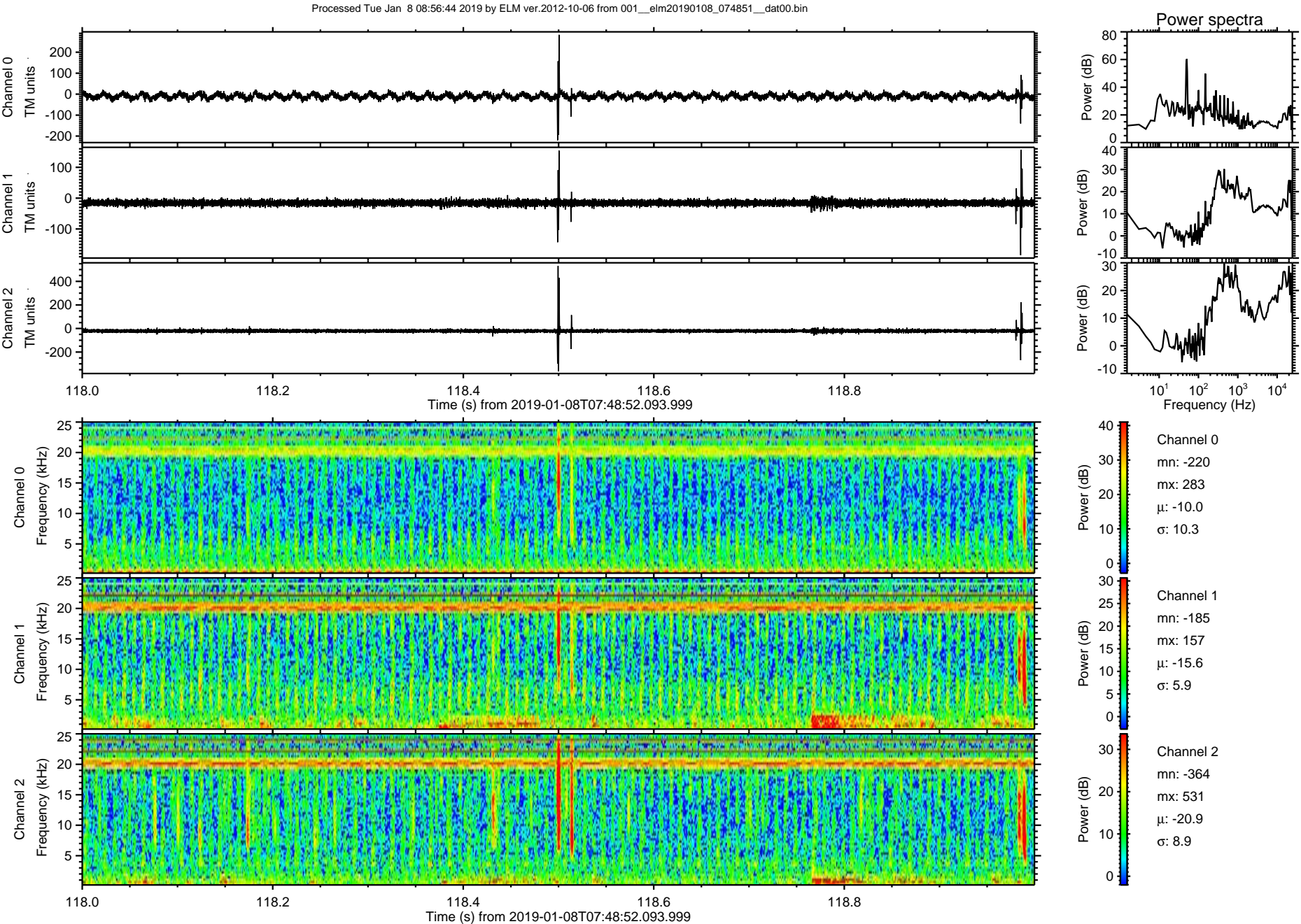


ELMAVAN 3D WAVEFORMS (Measured data sampled at 50 kHz) 50999 packets of 144 samples from 2019-01-08T07:48:52.093.999. Part 100/147



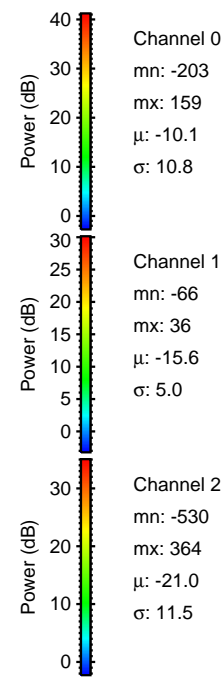
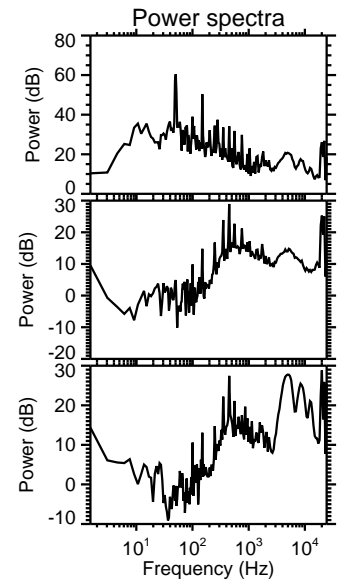
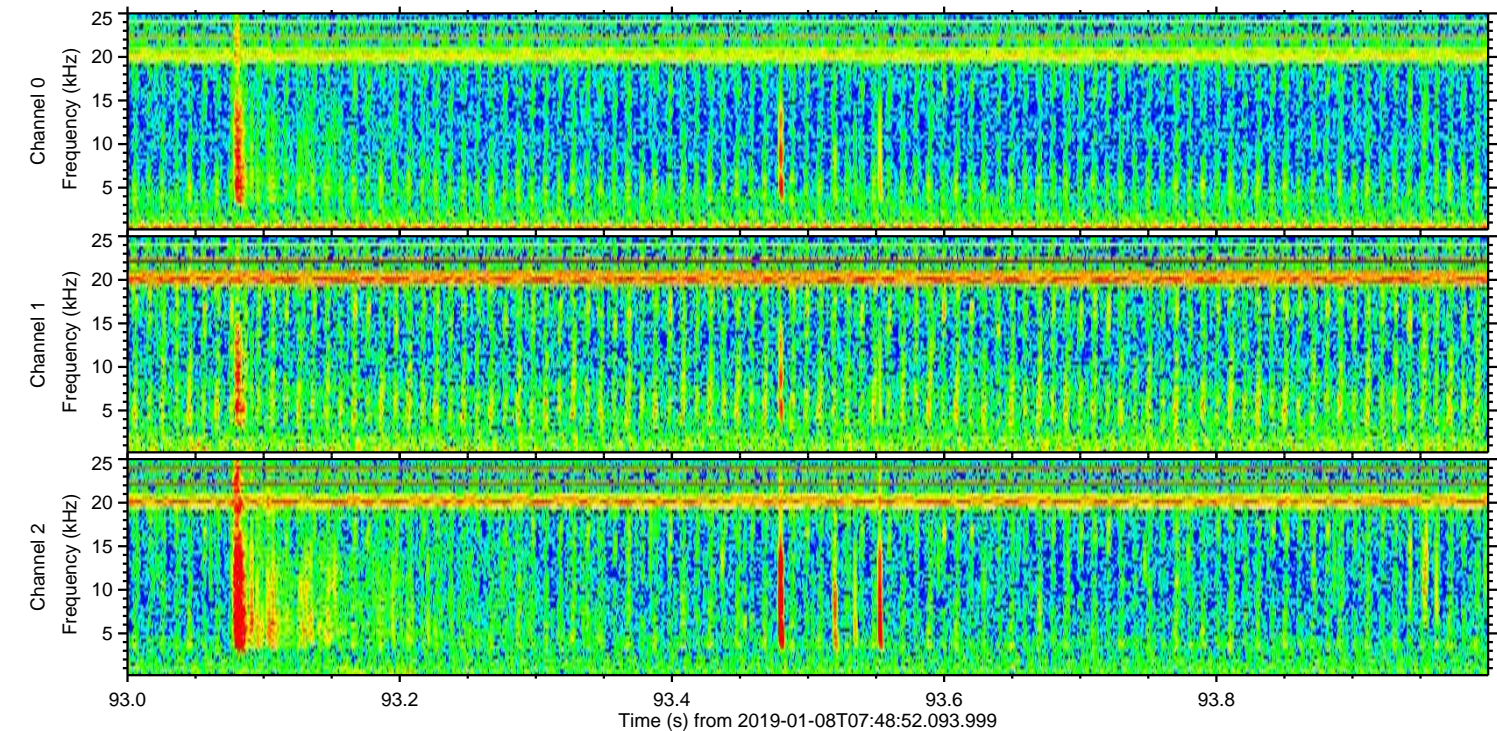
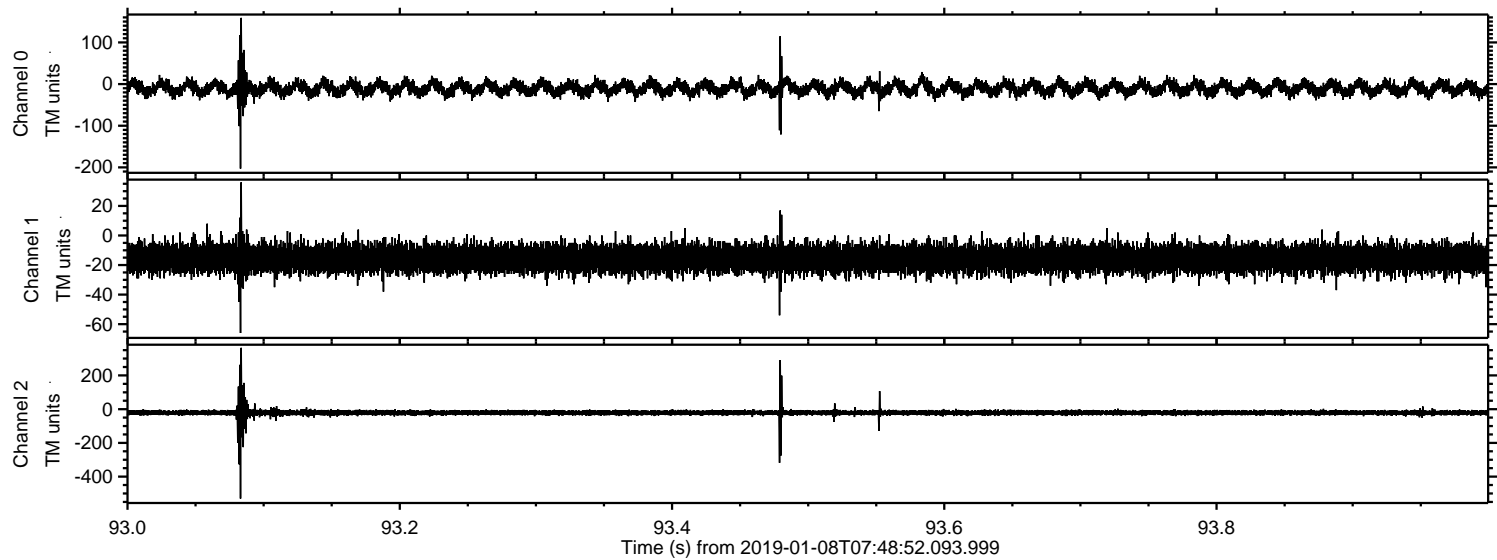


ELMAVAN 3D WAVEFORMS (Measured data sampled at 50 kHz) 50999 packets of 144 samples from 2019-01-08T07:48:52.093.999. Part 119/147



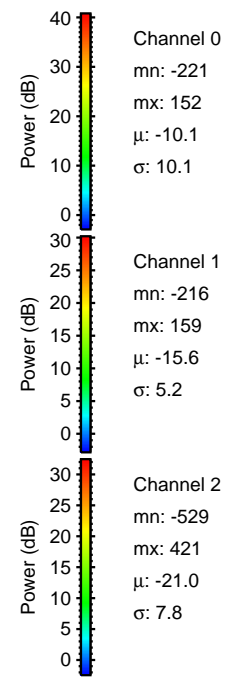
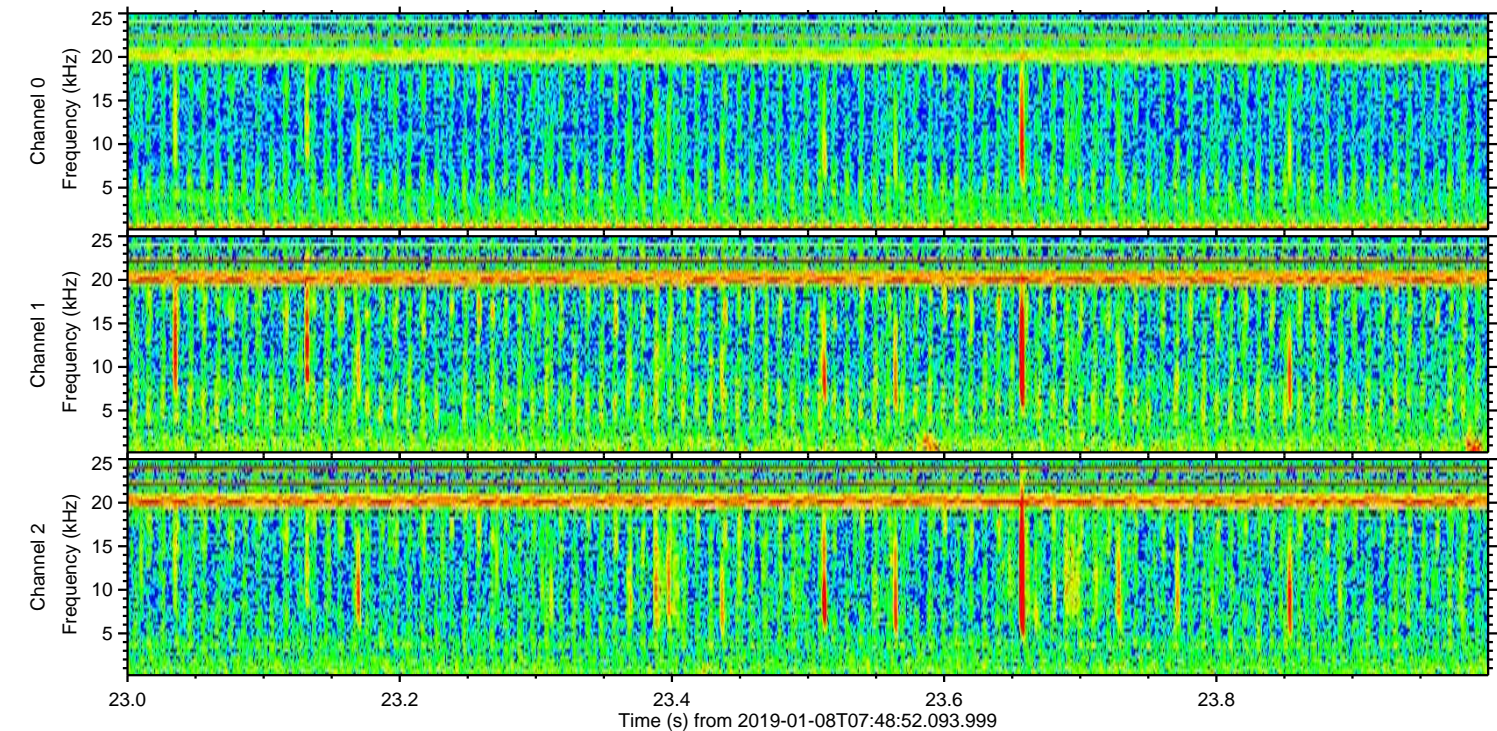
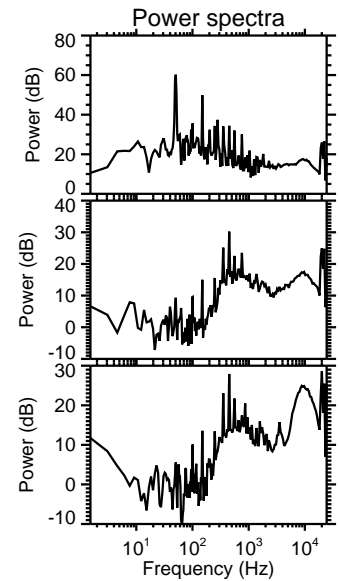
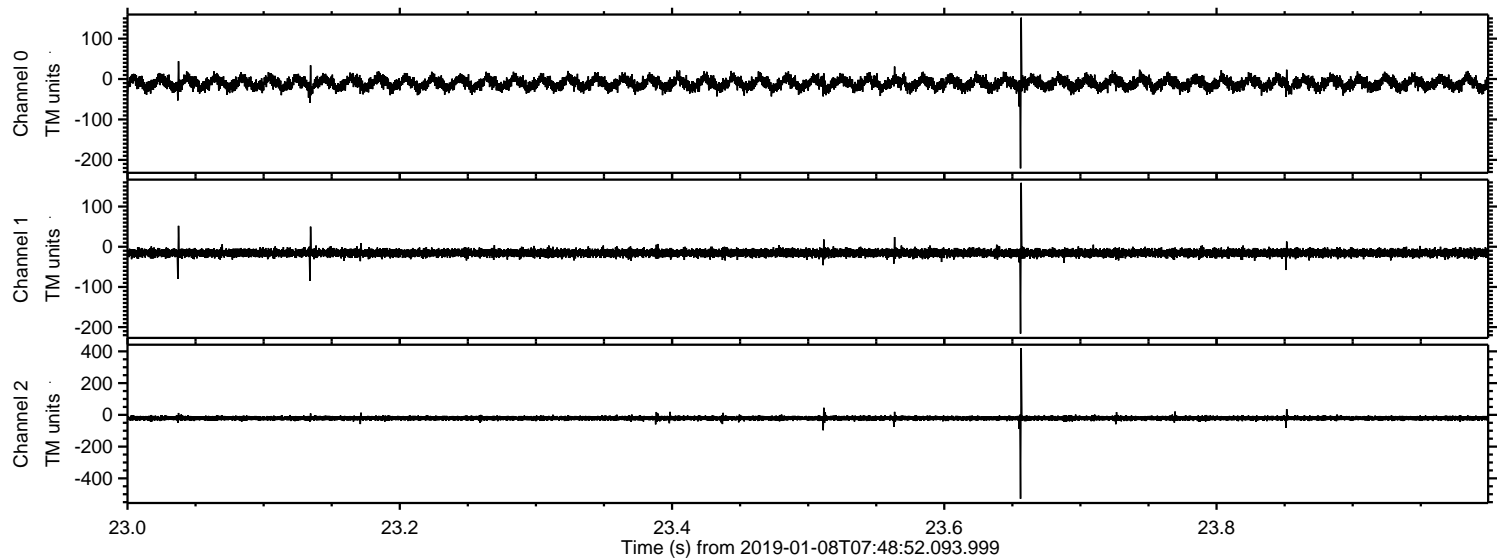


Processed Tue Jan 8 08:56:45 2019 by ELM ver.2012-10-06 from 001\_\_elm20190108\_074851\_\_dat00.bin





Processed Tue Jan 8 08:56:45 2019 by ELM ver.2012-10-06 from 001\_\_elm20190108\_074851\_\_dat00.bin





Processed Tue Jan 8 08:56:46 2019 by ELM ver.2012-10-06 from 001\_\_elm20190108\_074851\_\_dat00.bin

