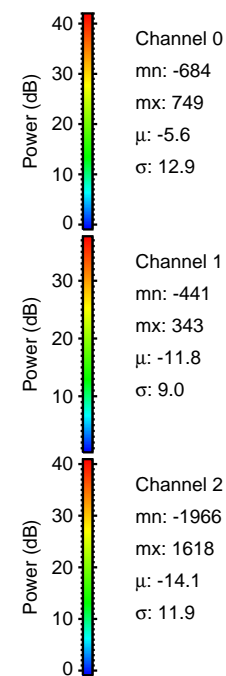
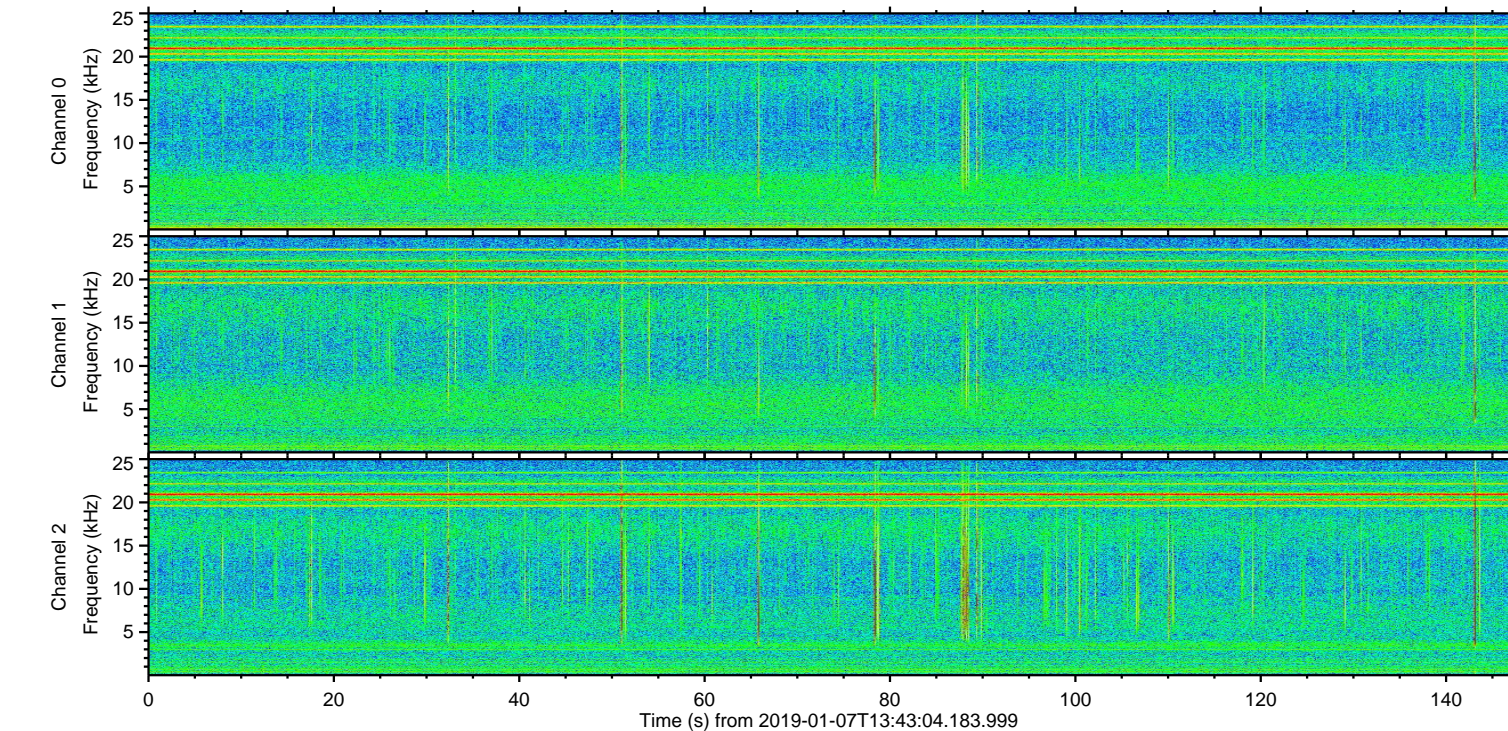
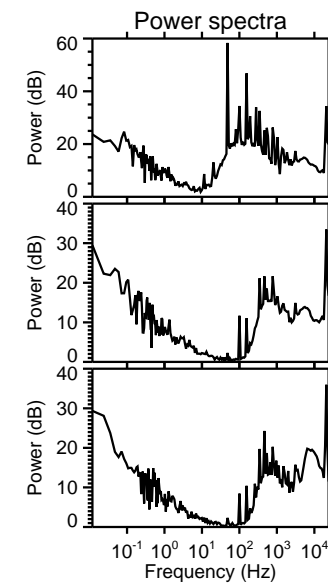
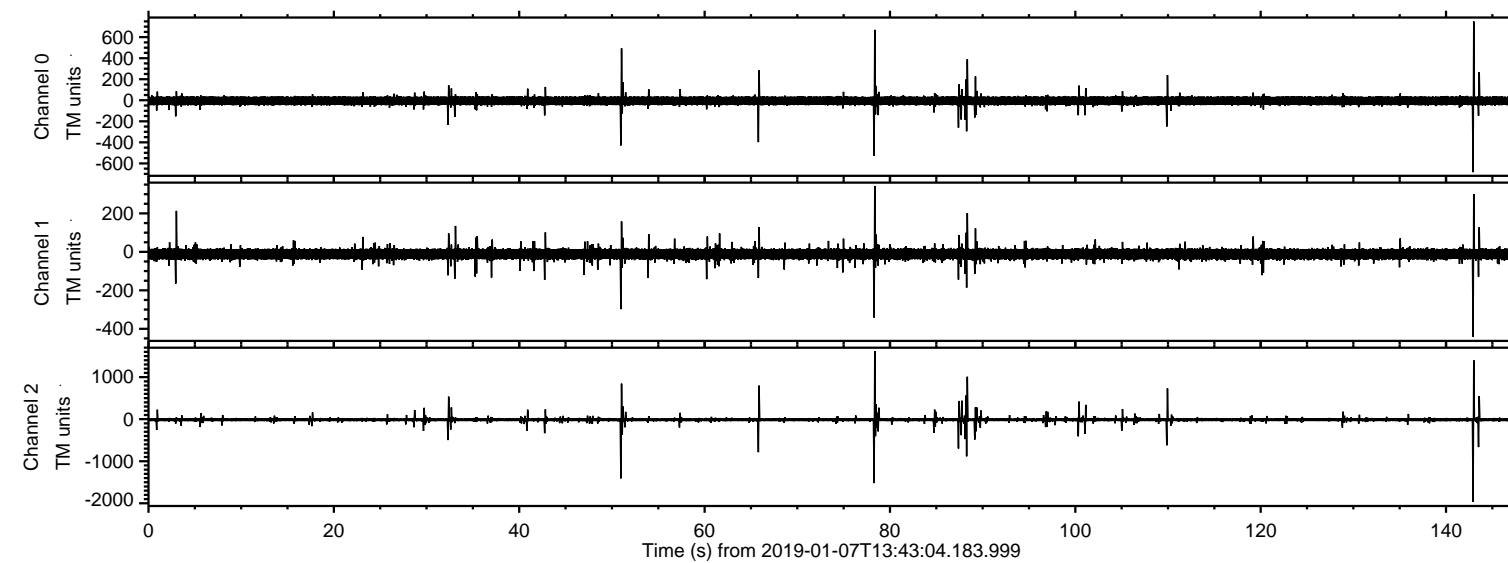


# ELMAVAN 3D WAVEFORMS (Measured data sampled at 50 kHz) 51000 packets of 144 samples from 2019-01-07T13:43:04.183.999.

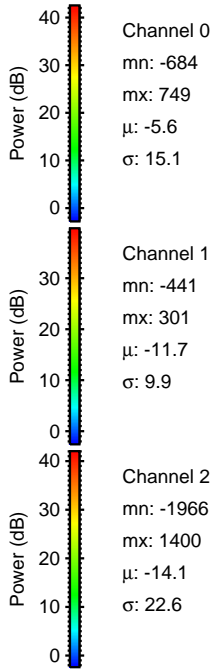
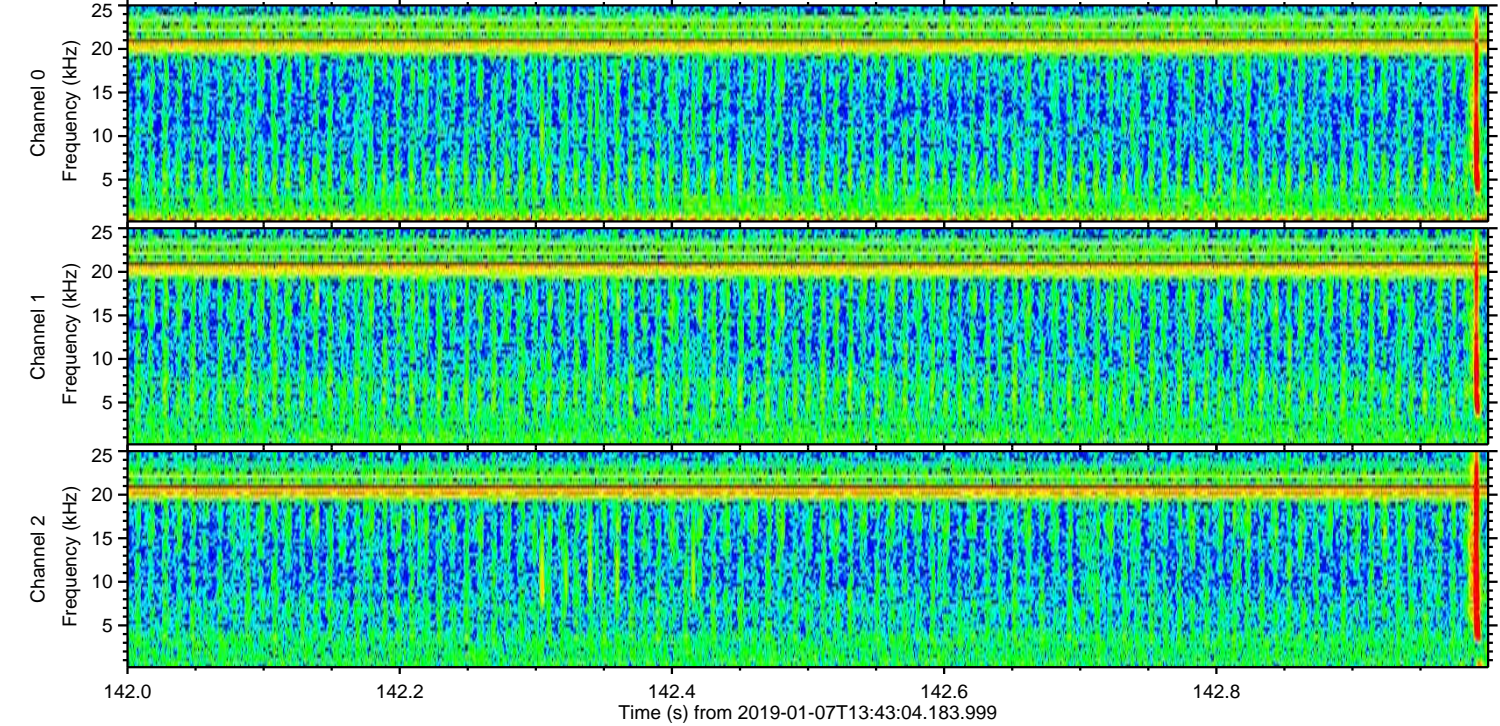
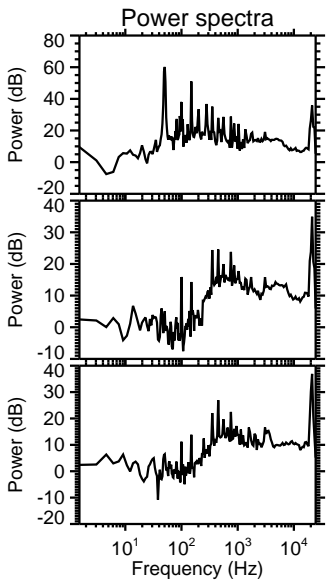
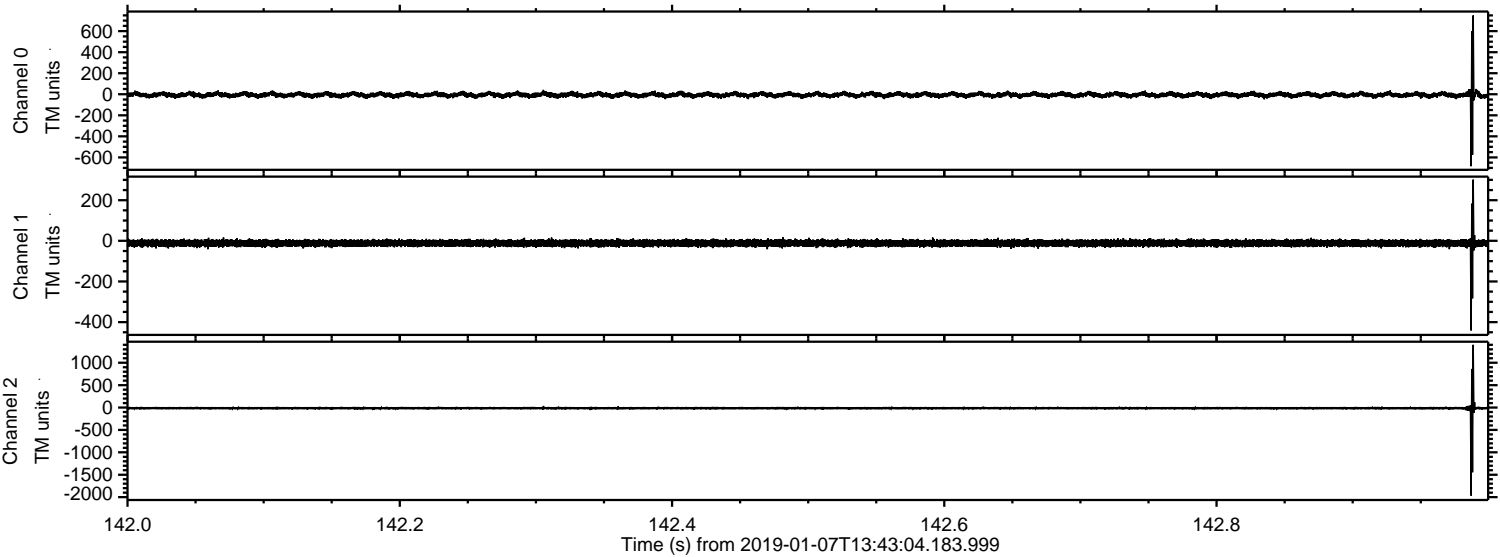
Processed Mon Jan 7 14:50:36 2019 by ELM ver.2012-10-06 from 001\_\_elm20190107\_134303\_\_dat00.bin





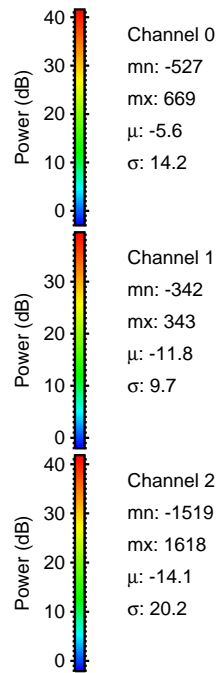
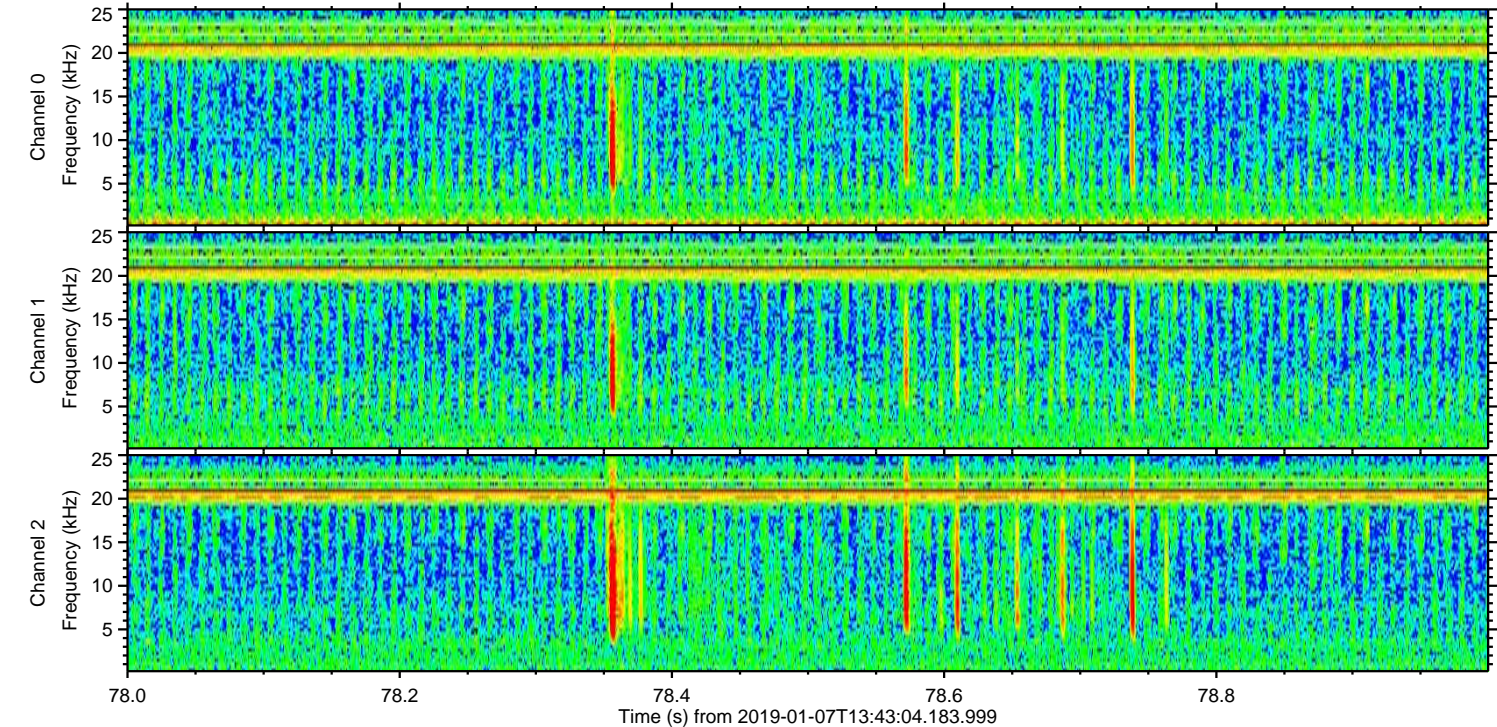
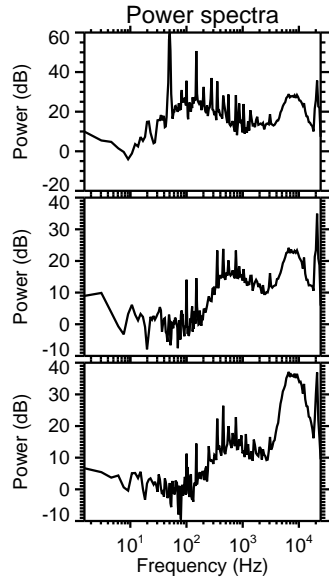
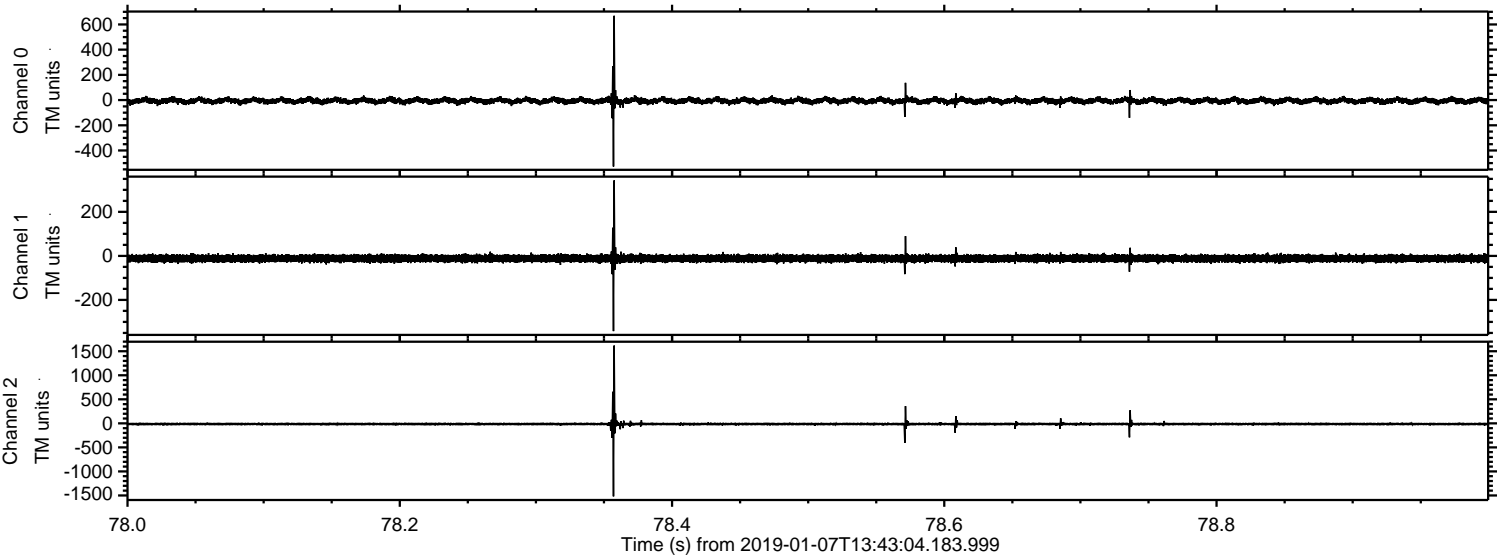
ELMAVAN 3D WAVEFORMS (Measured data sampled at 50 kHz) 51000 packets of 144 samples from 2019-01-07T13:43:04.183.999. Part 143/147

Processed Mon Jan 7 14:50:43 2019 by ELM ver.2012-10-06 from 001\_\_elm20190107\_134303\_\_dat00.bin



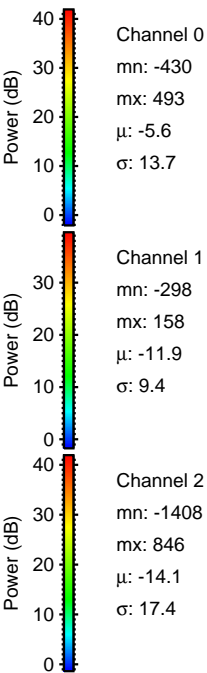
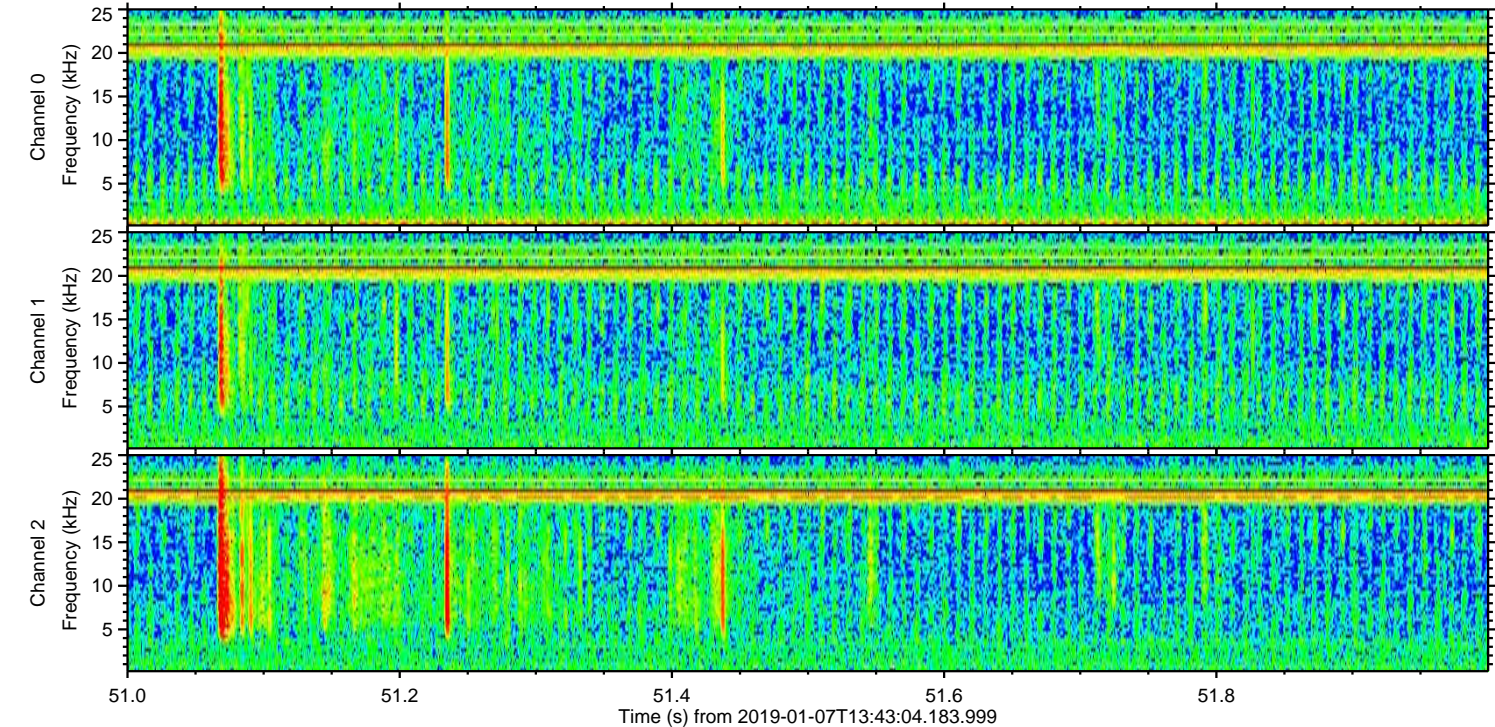
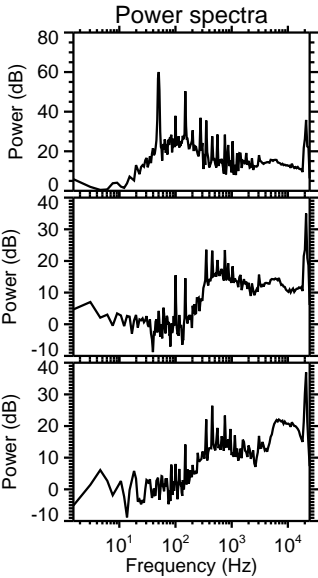
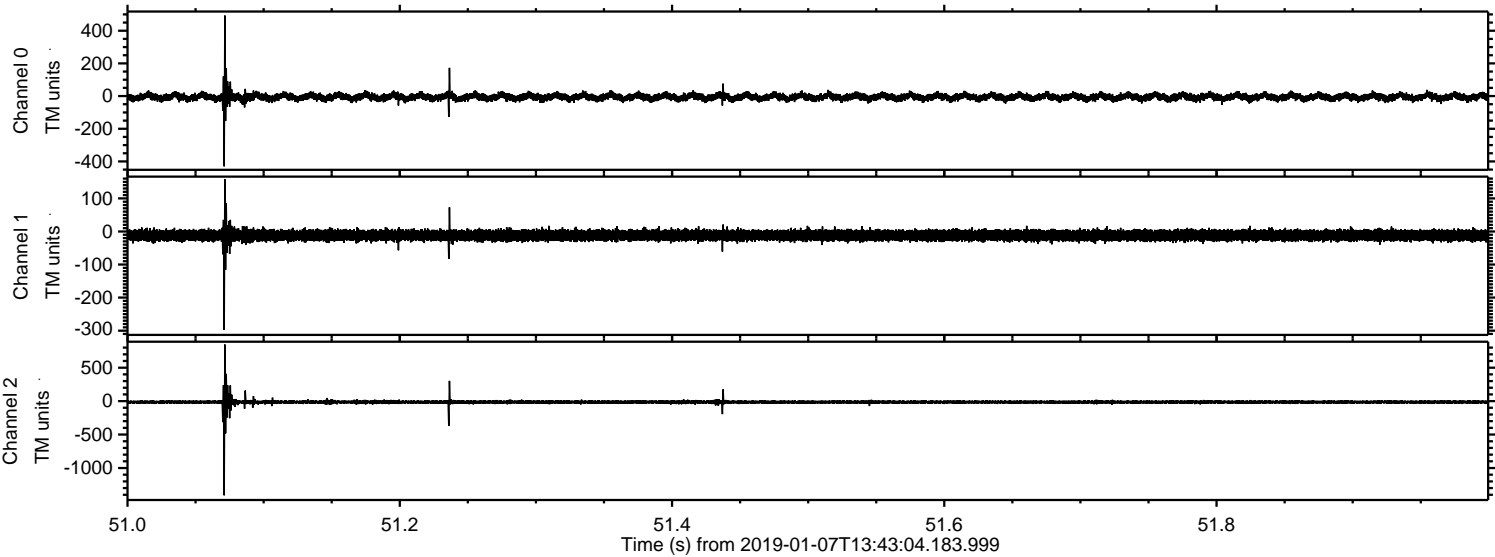


Processed Mon Jan 7 14:50:44 2019 by ELM ver.2012-10-06 from 001\_\_elm20190107\_134303\_\_dat00.bin



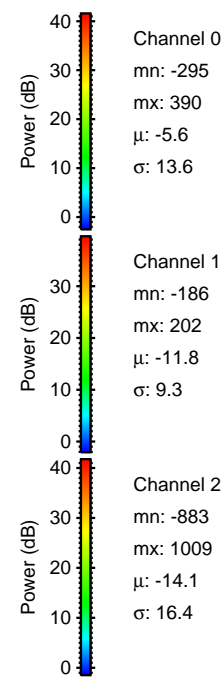
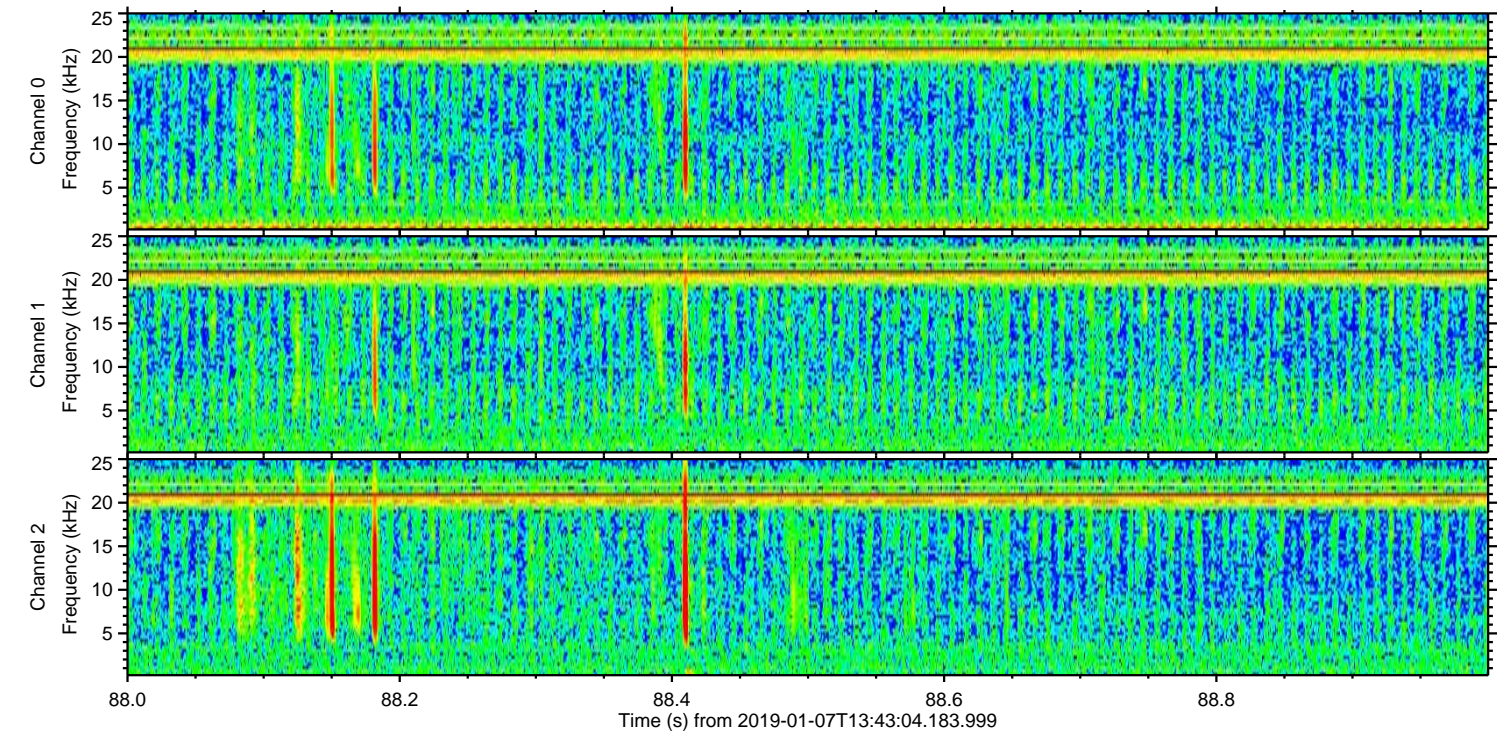
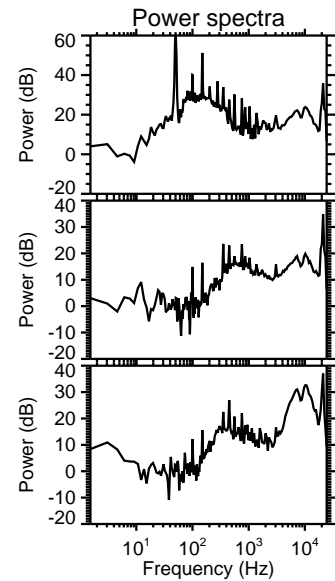
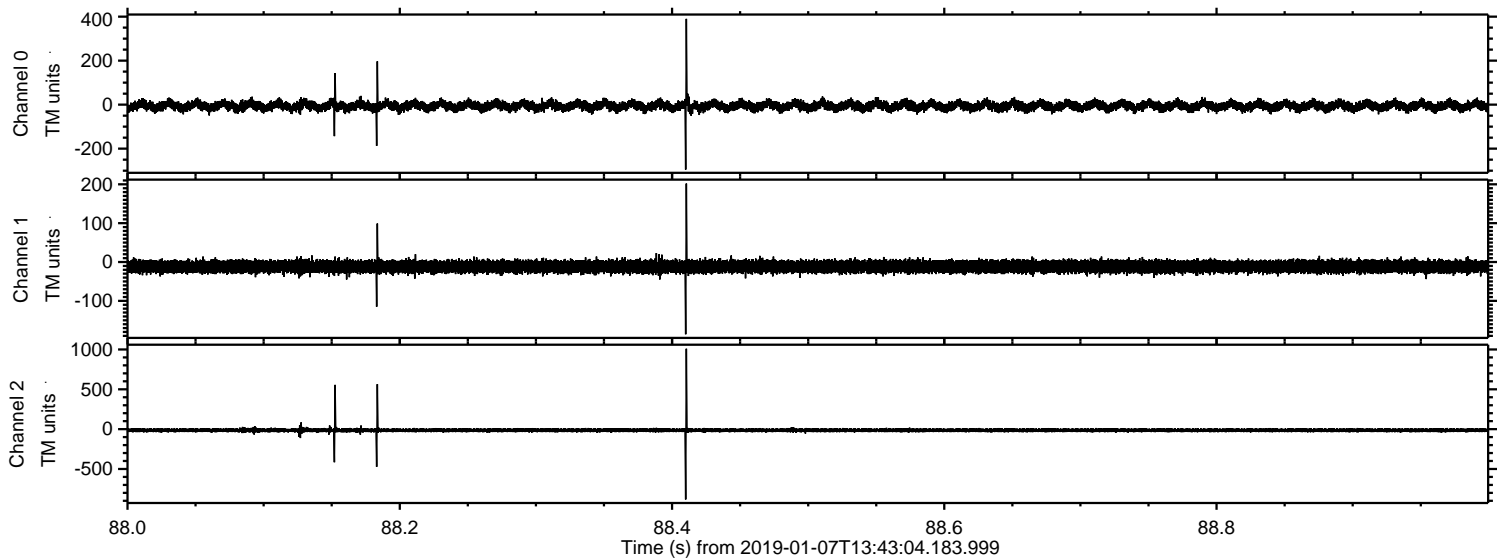


Processed Mon Jan 7 14:50:44 2019 by ELM ver.2012-10-06 from 001\_\_elm20190107\_134303\_\_dat00.bin



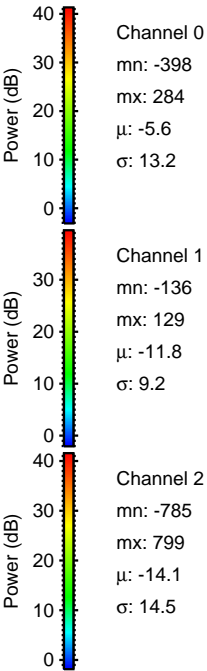
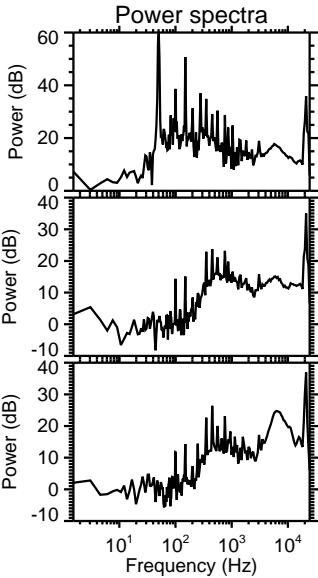
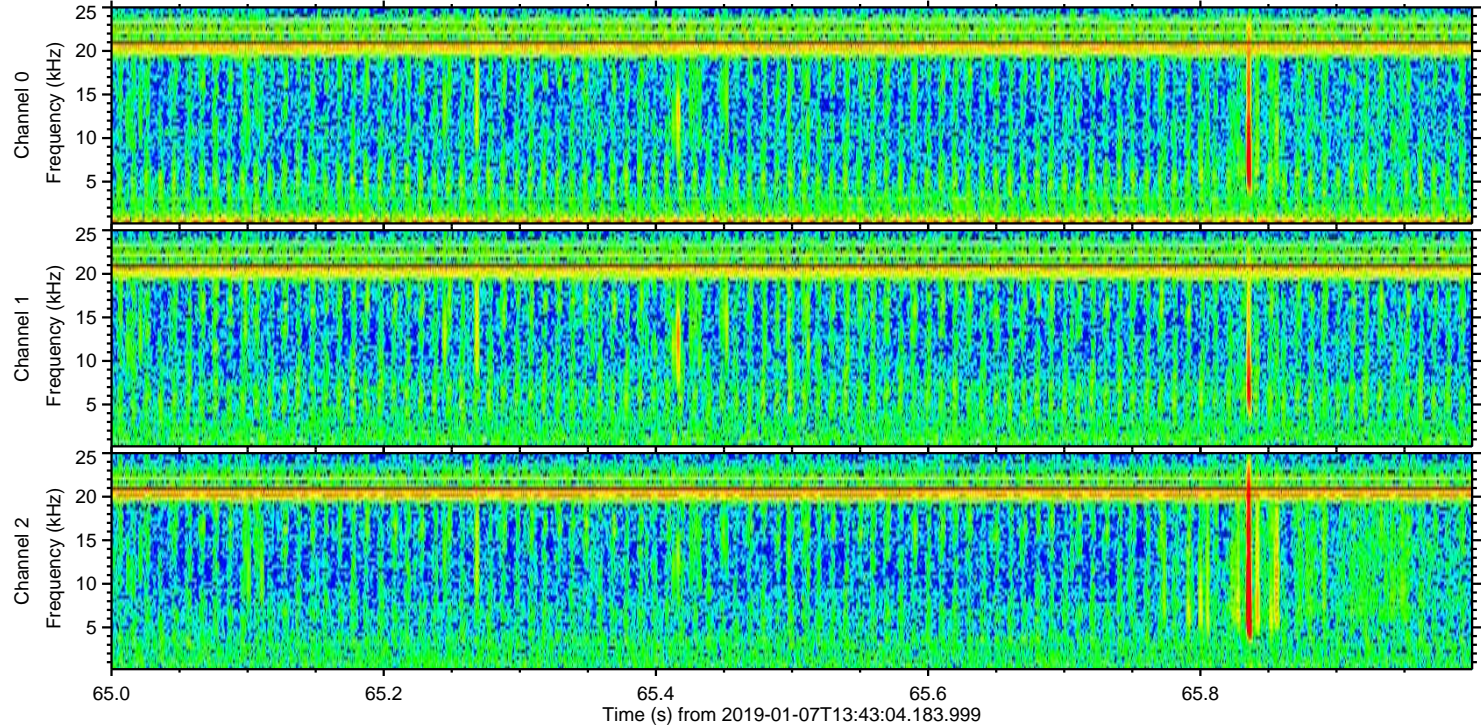
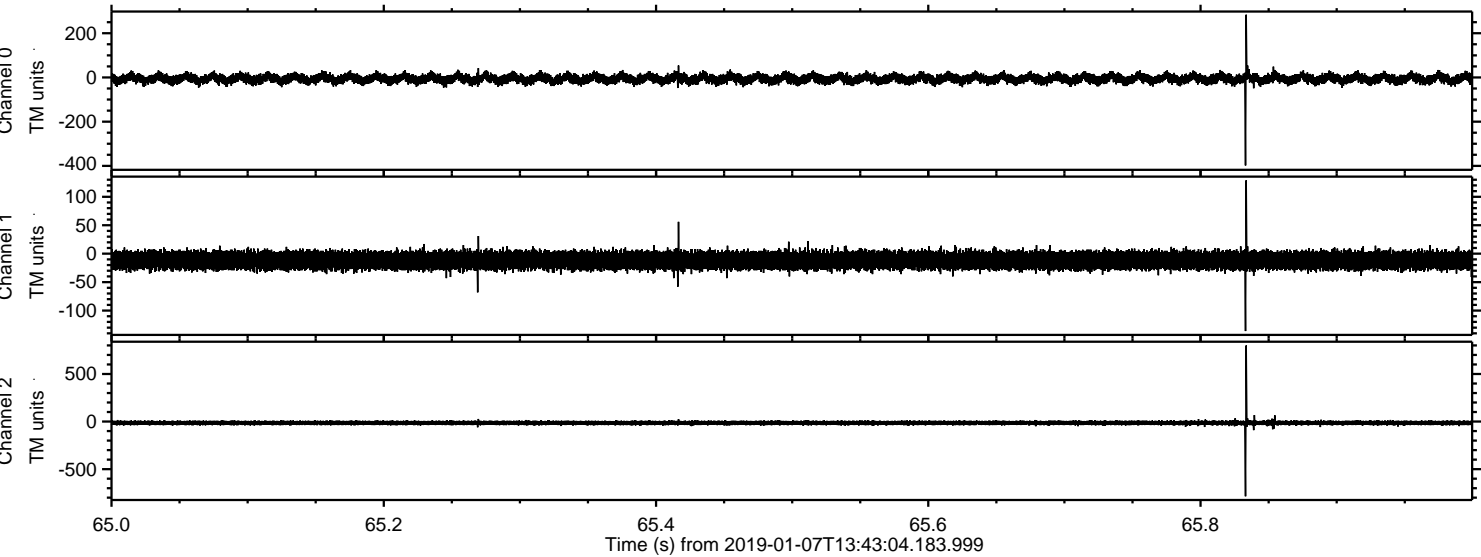


Processed Mon Jan 7 14:50:45 2019 by ELM ver.2012-10-06 from 001\_\_elm20190107\_134303\_\_dat00.bin



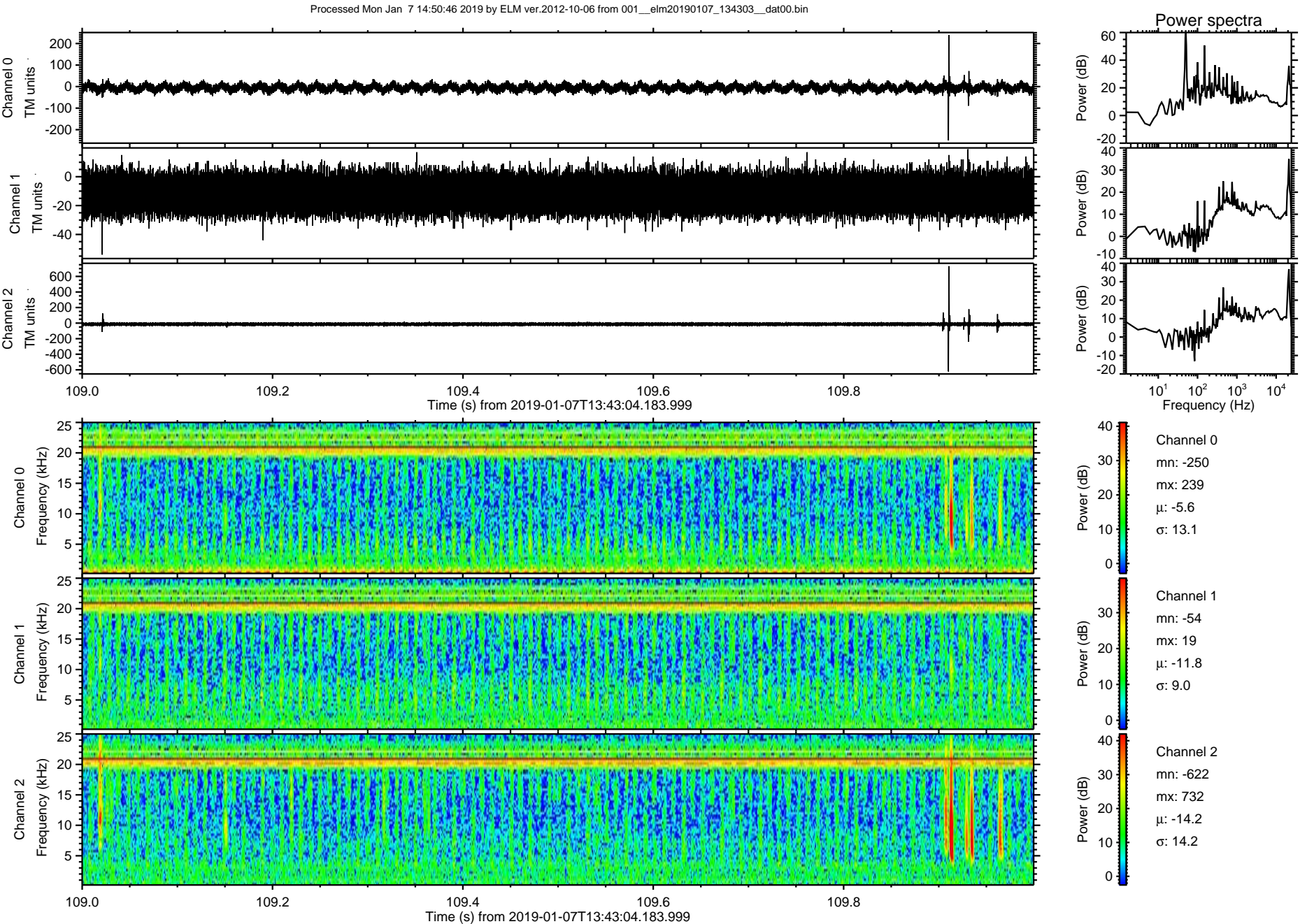


Processed Mon Jan 7 14:50:46 2019 by ELM ver.2012-10-06 from 001\_\_elm20190107\_134303\_\_dat00.bin



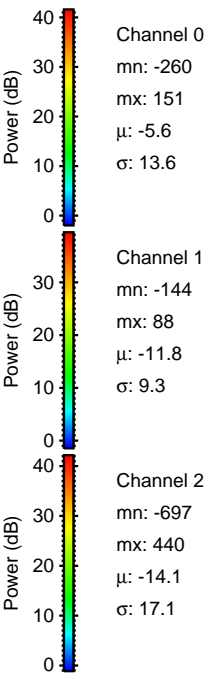
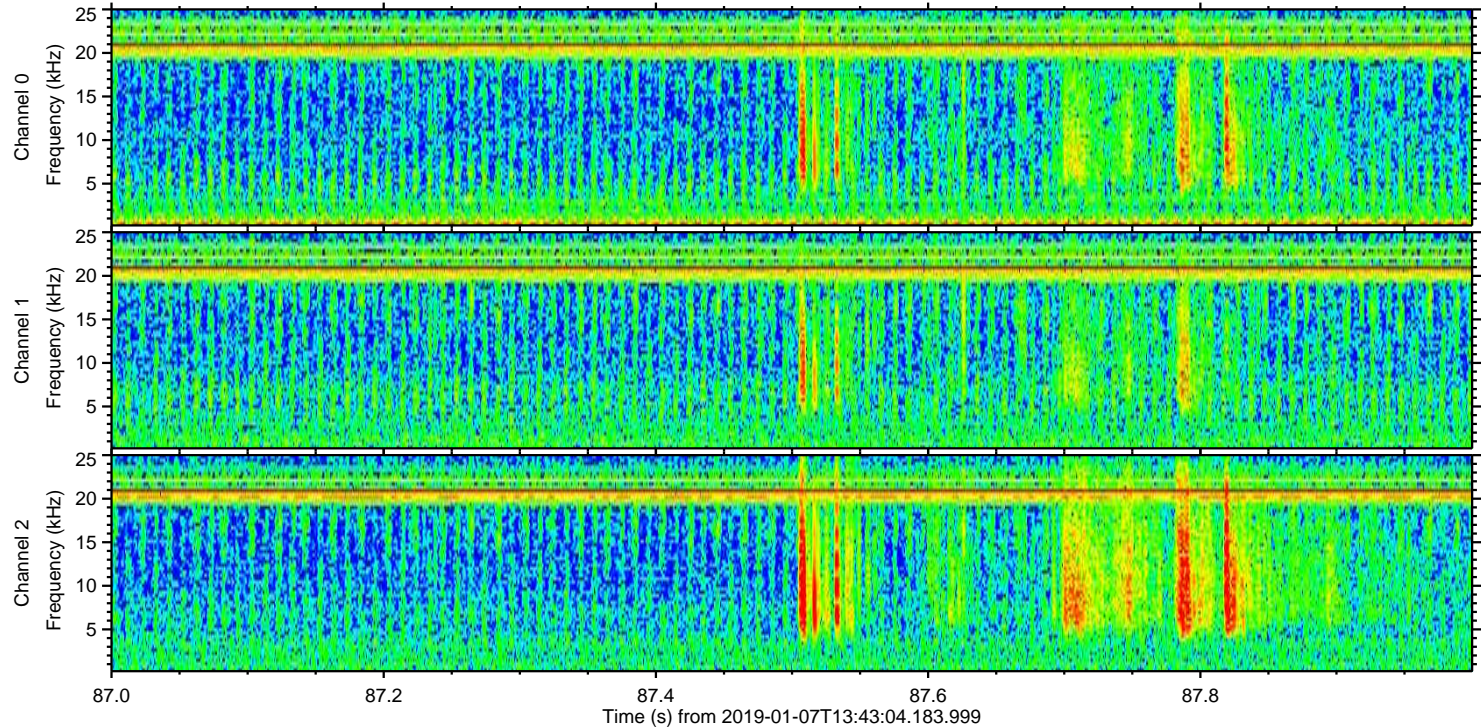
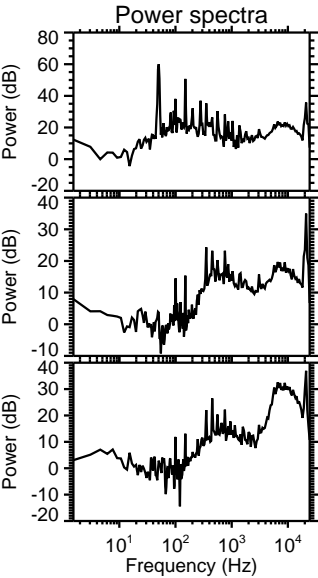
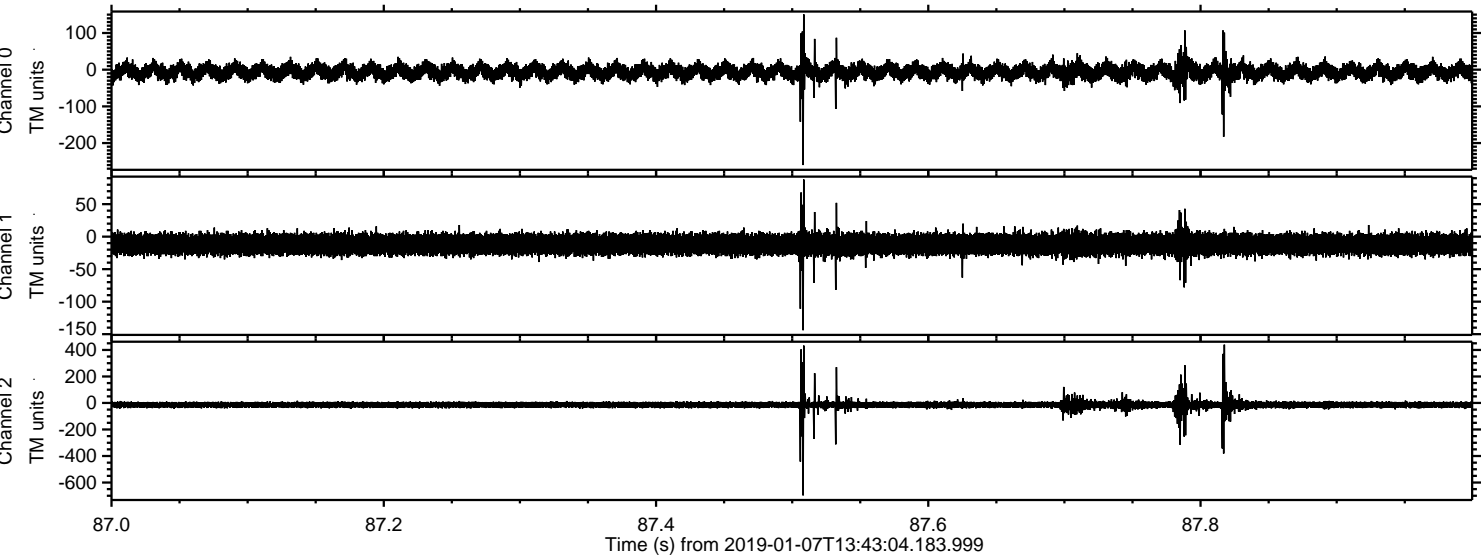


ELMAVAN 3D WAVEFORMS (Measured data sampled at 50 kHz) 51000 packets of 144 samples from 2019-01-07T13:43:04.183.999. Part 110/147





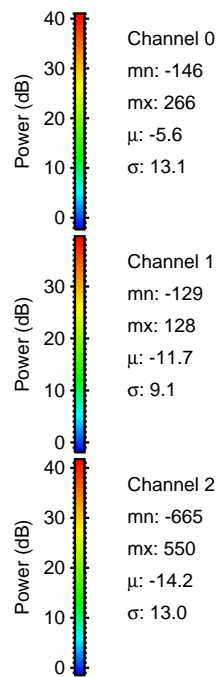
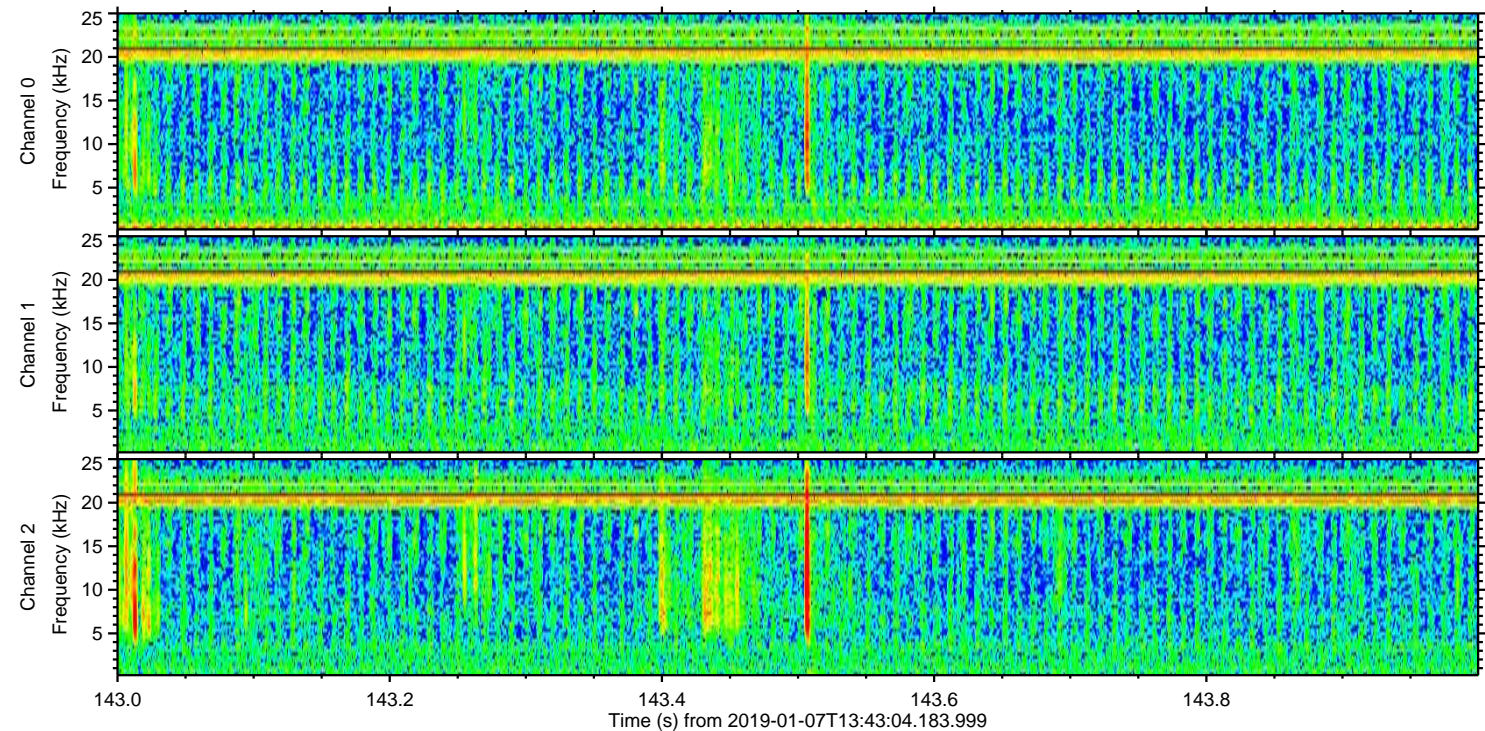
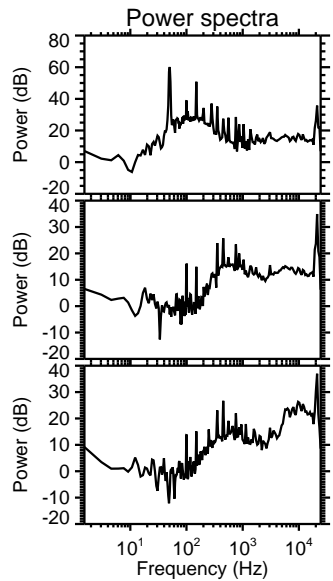
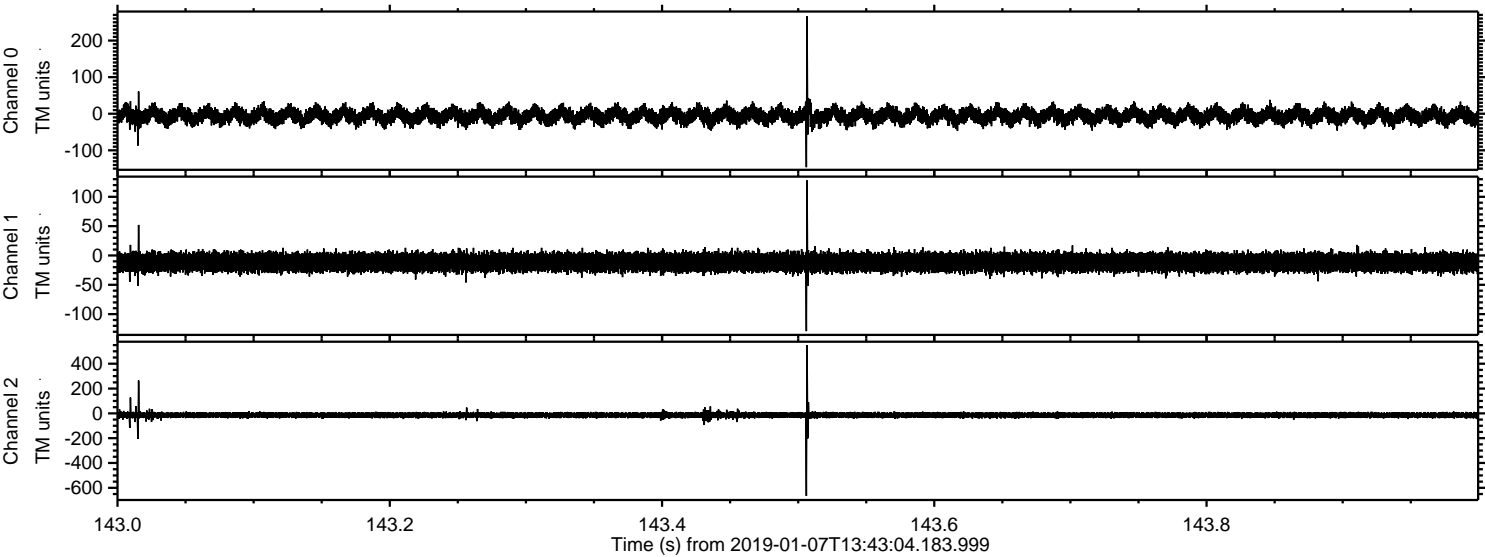
Processed Mon Jan 7 14:50:47 2019 by ELM ver.2012-10-06 from 001\_\_elm20190107\_134303\_\_dat00.bin





ELMAVAN 3D WAVEFORMS (Measured data sampled at 50 kHz) 51000 packets of 144 samples from 2019-01-07T13:43:04.183.999. Part 144/147

Processed Mon Jan 7 14:50:48 2019 by ELM ver.2012-10-06 from 001\_\_elm20190107\_134303\_\_dat00.bin





Processed Mon Jan 7 14:50:48 2019 by ELM ver.2012-10-06 from 001\_\_elm20190107\_134303\_\_dat00.bin

