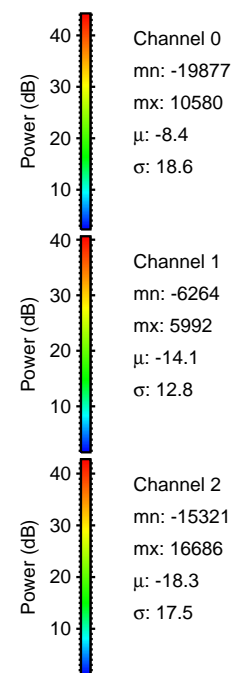
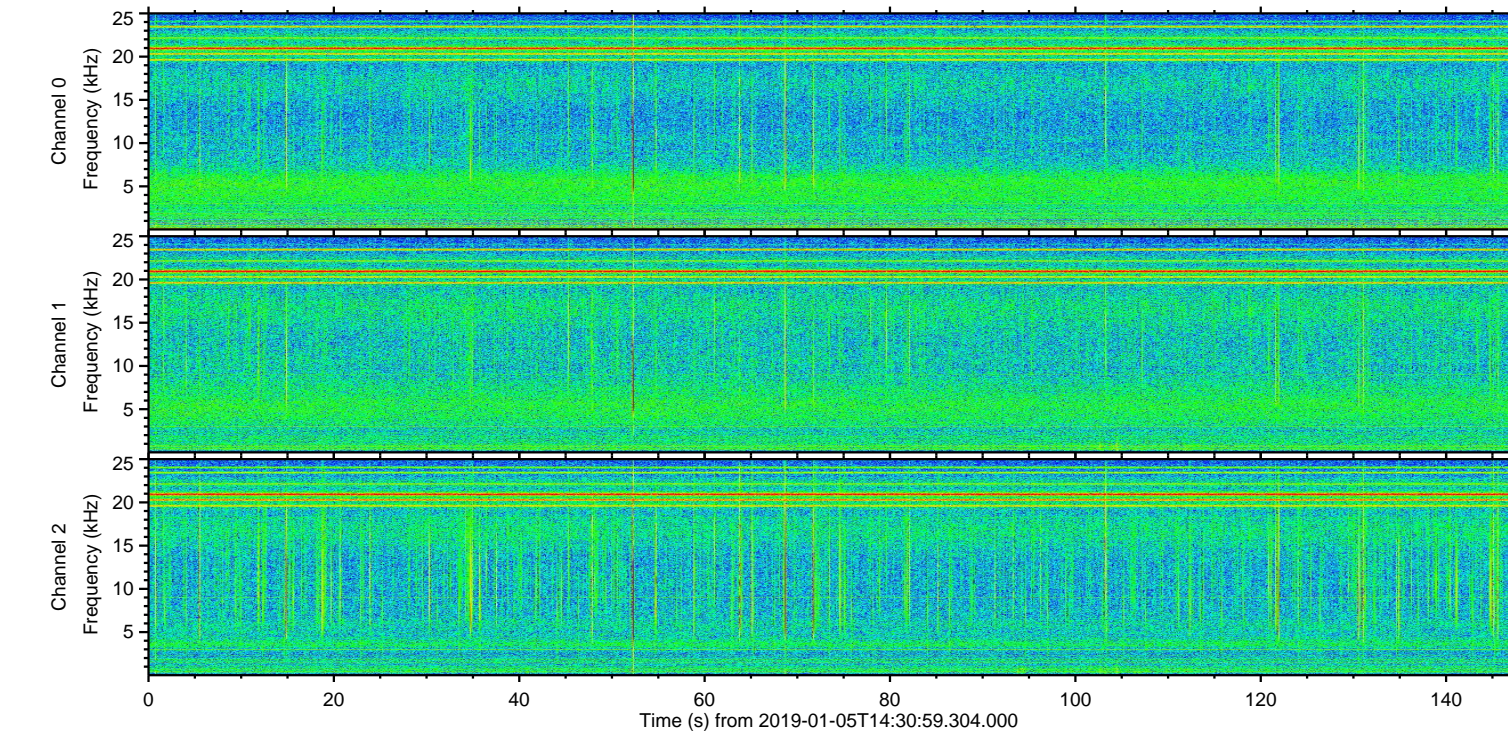
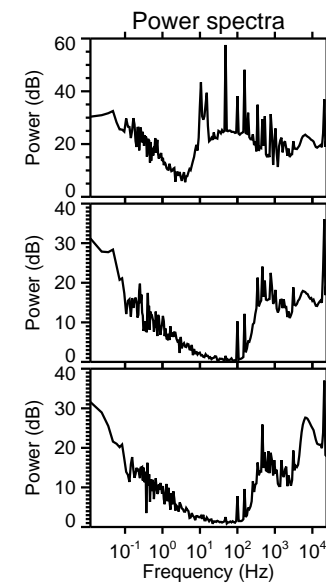
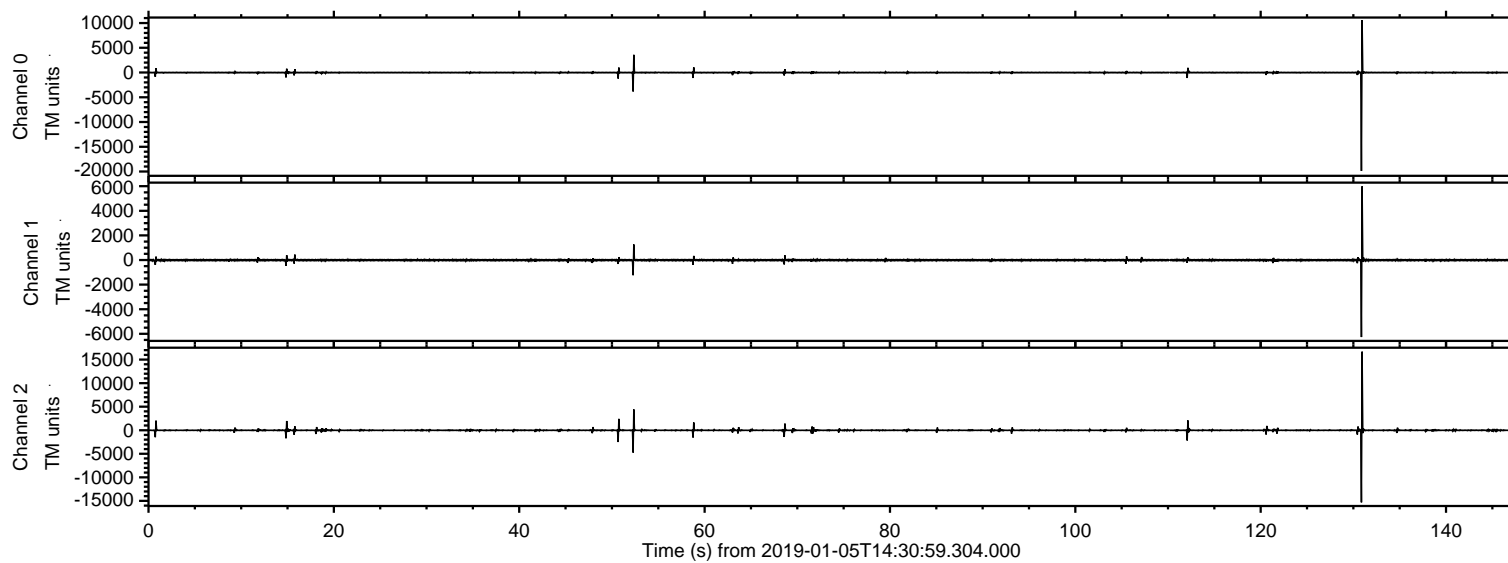


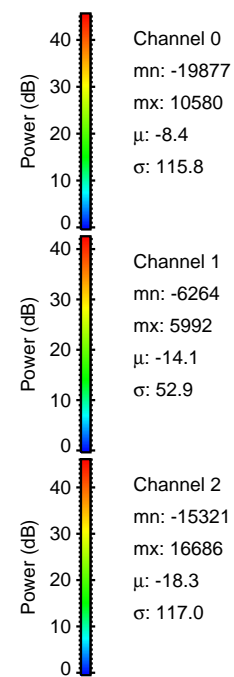
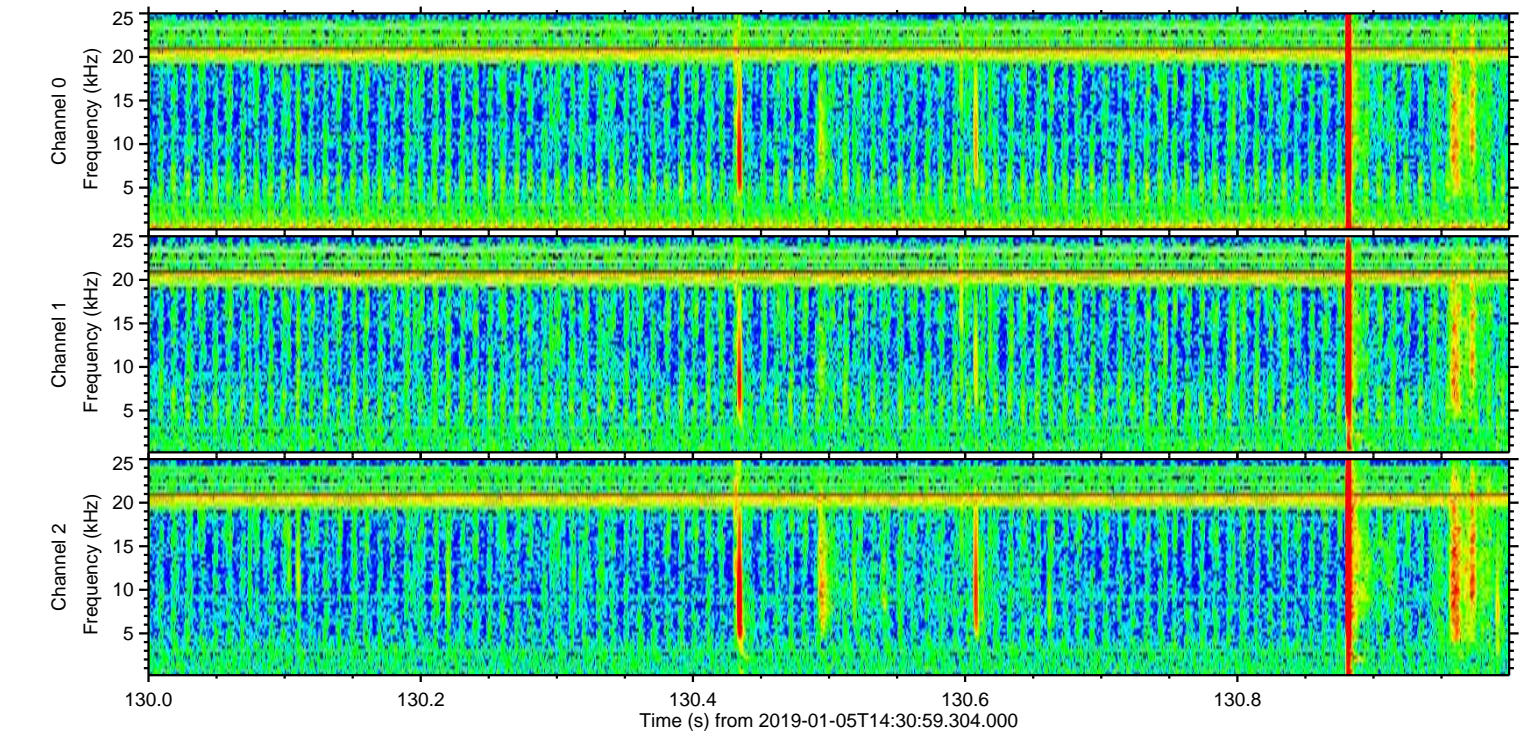
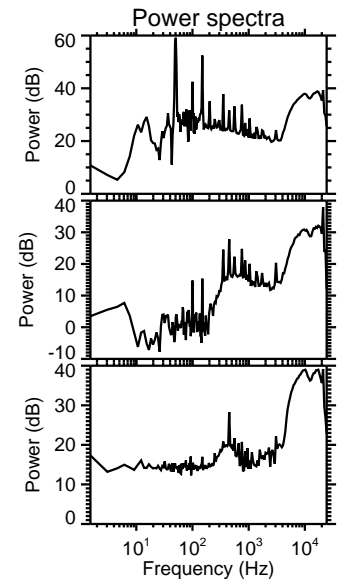
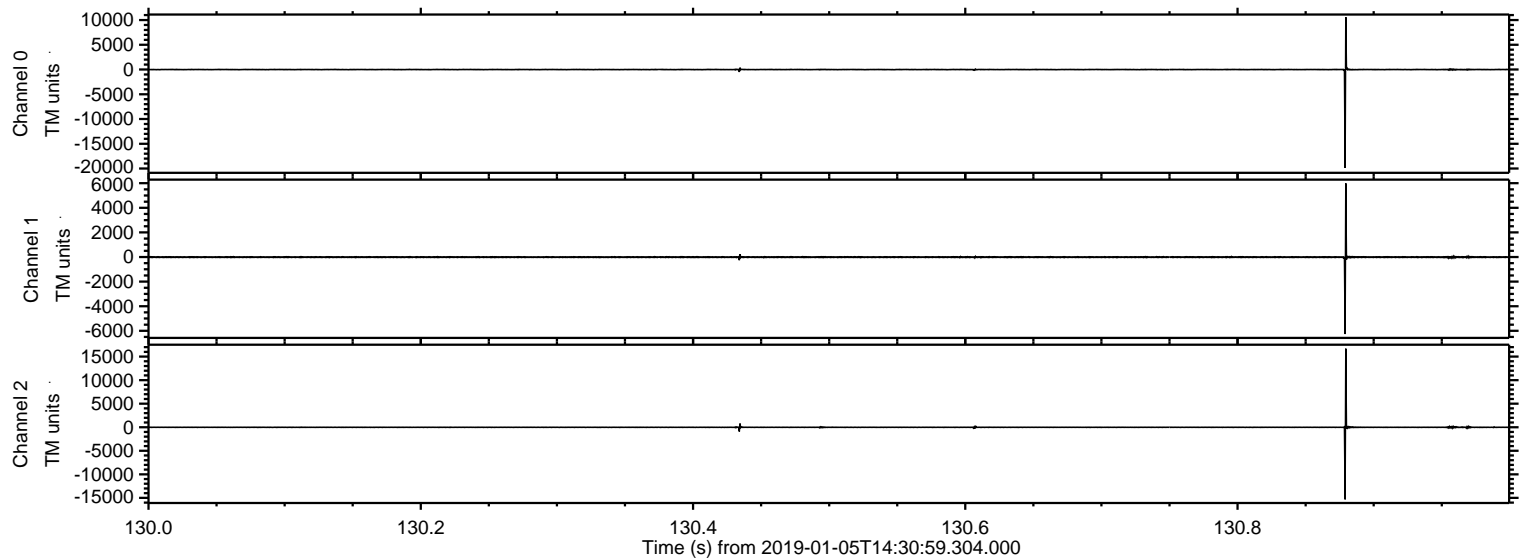
ELMAVAN 3D WAVEFORMS (Measured data sampled at 50 kHz) 51000 packets of 144 samples from 2019-01-05T14:30:59.304.000.

Processed Sat Jan 5 15:38:58 2019 by ELM ver.2012-10-06 from 001__elm20190105_143058__dat00.bin

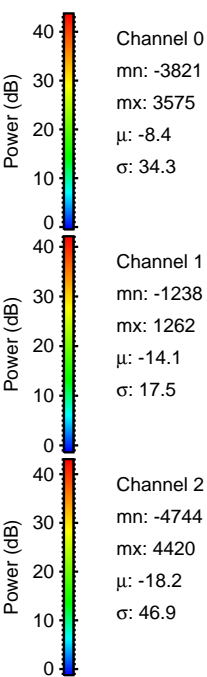
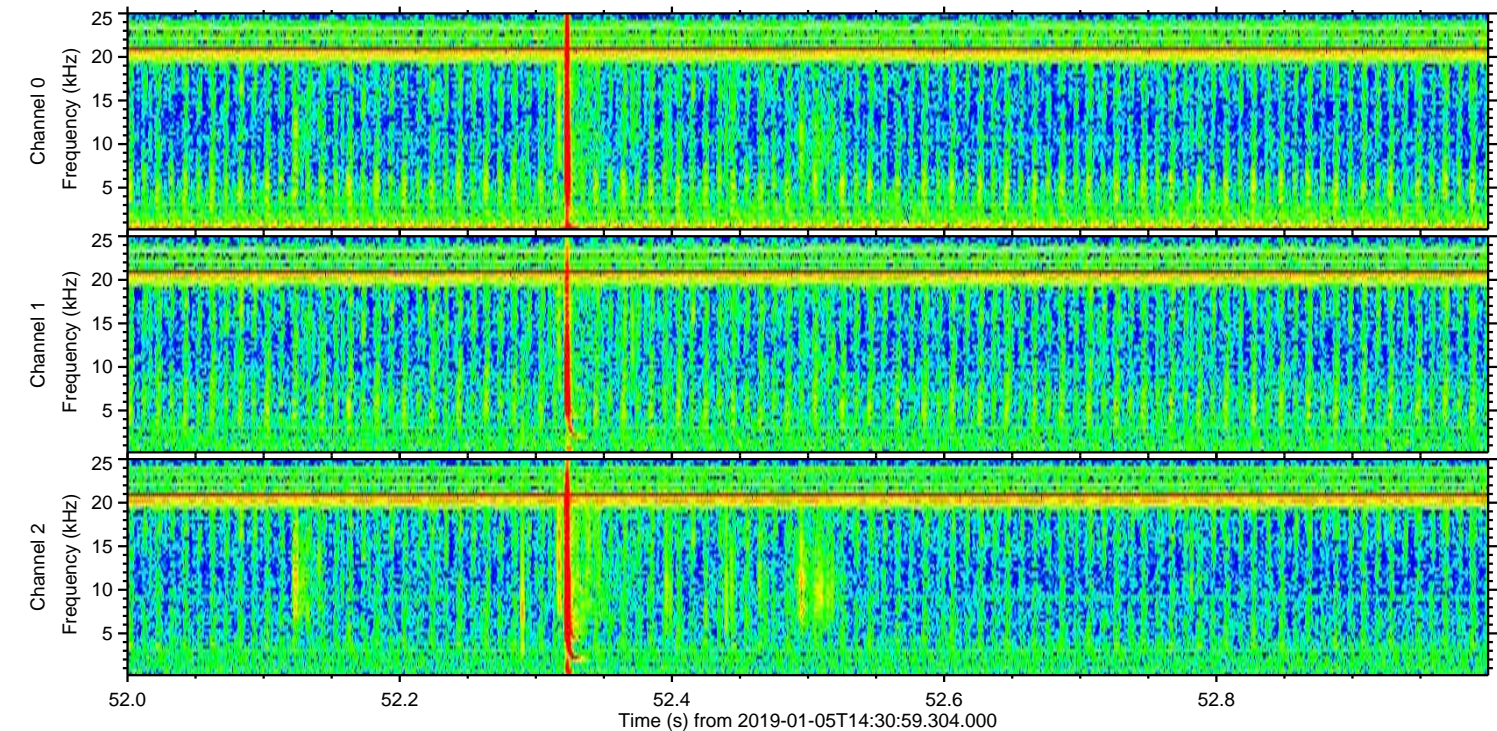
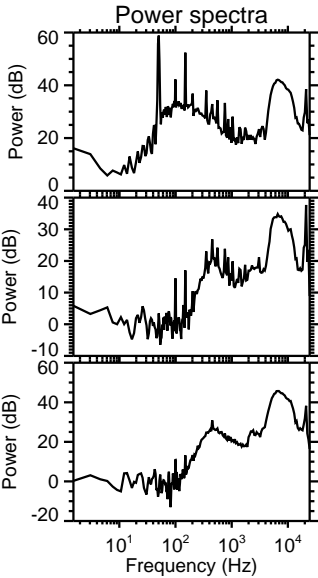
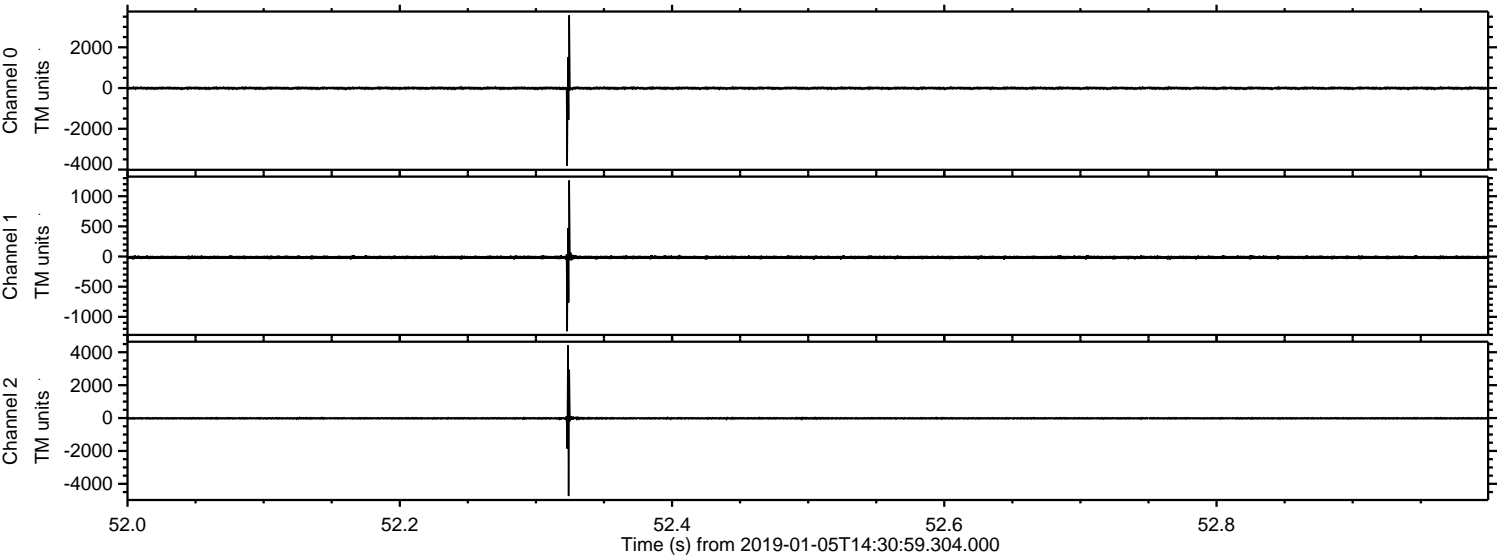


ELMAVAN 3D WAVEFORMS (Measured data sampled at 50 kHz) 51000 packets of 144 samples from 2019-01-05T14:30:59.304.000. Part 131/147

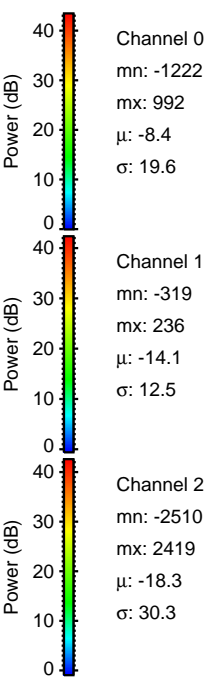
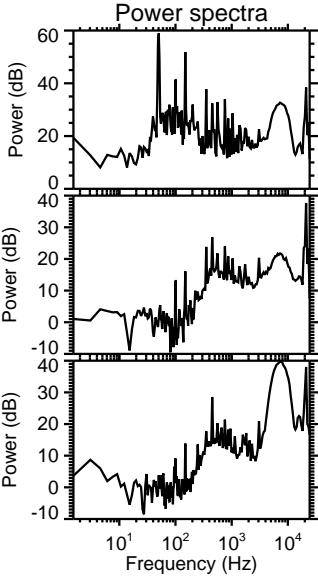
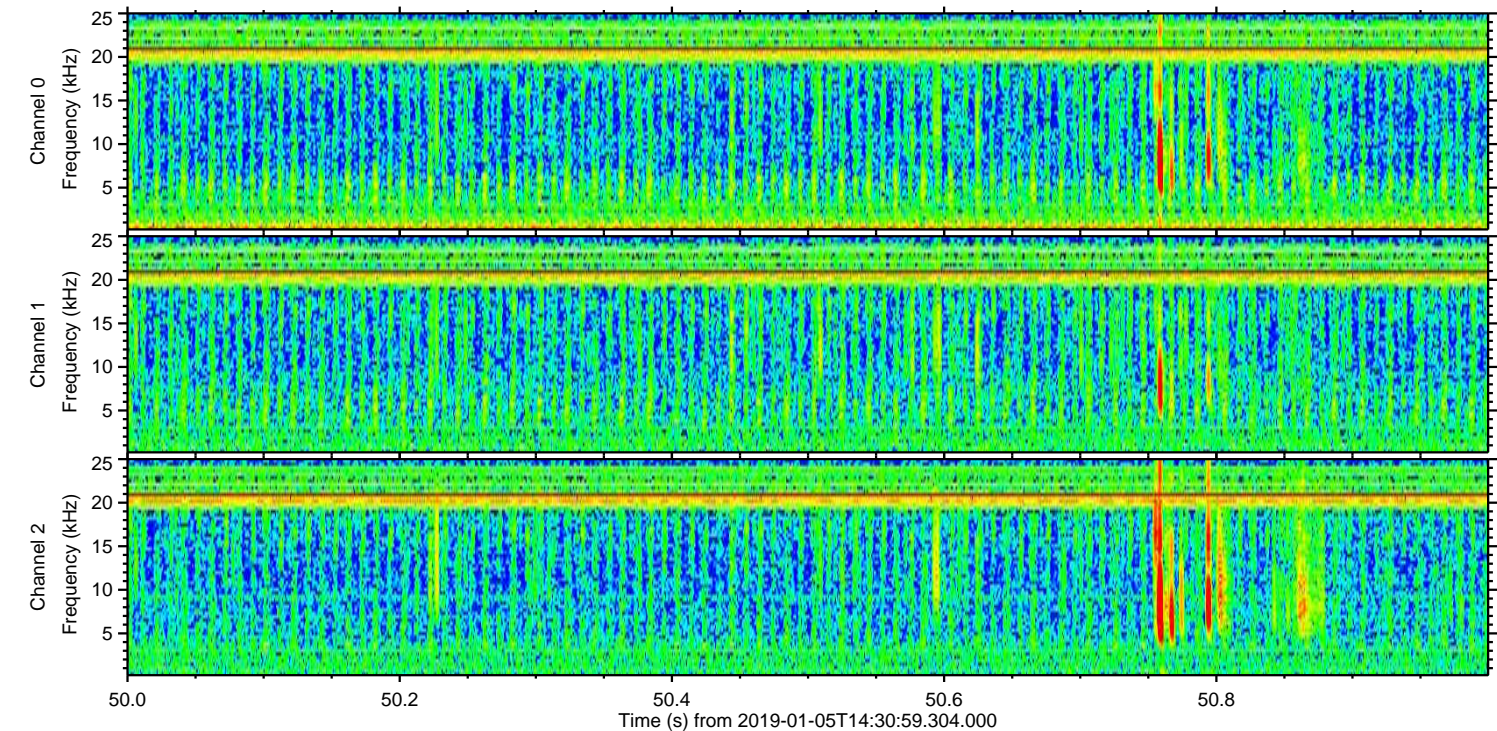
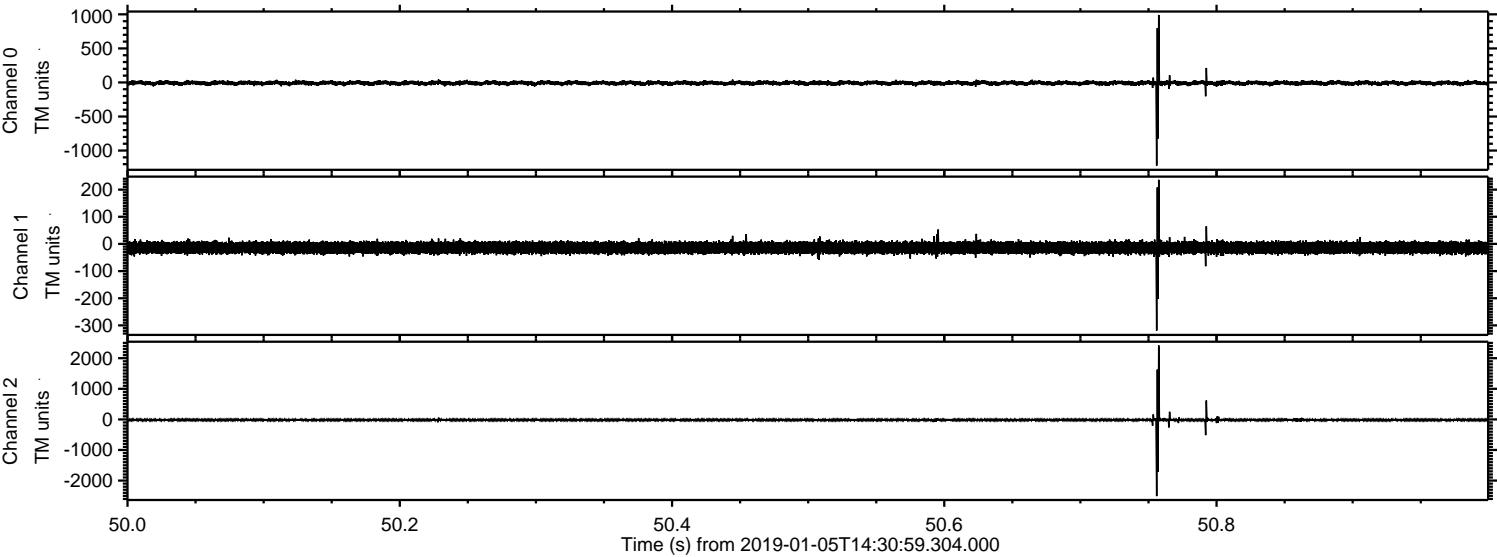
Processed Sat Jan 5 15:39:05 2019 by ELM ver.2012-10-06 from 001__elm20190105_143058__dat00.bin



Processed Sat Jan 5 15:39:05 2019 by ELM ver.2012-10-06 from 001__elm20190105_143058__dat00.bin

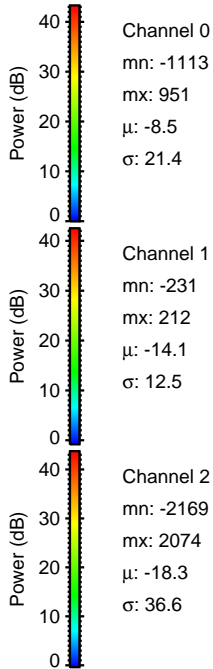
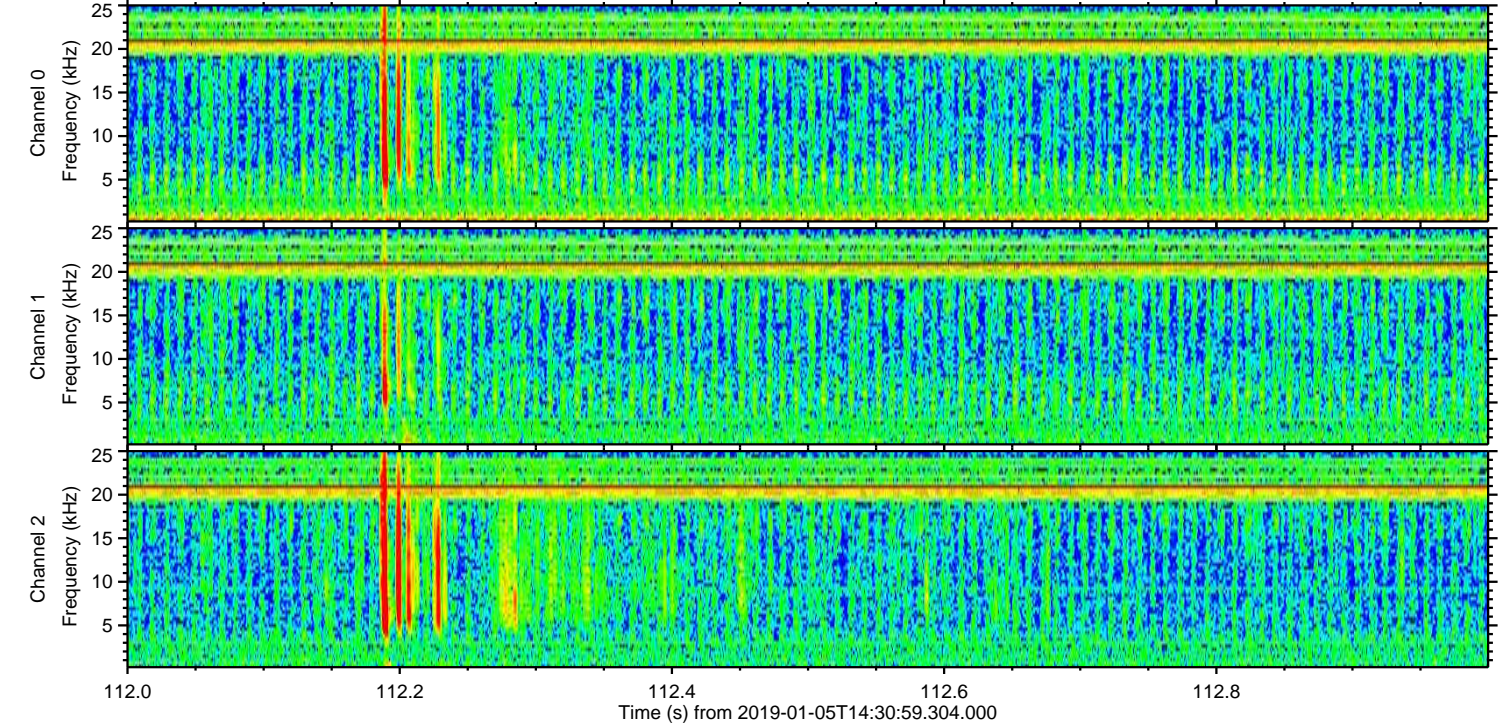
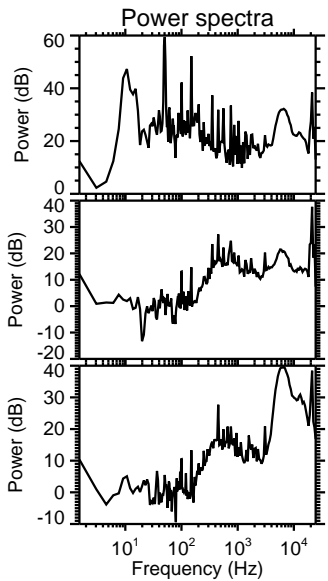
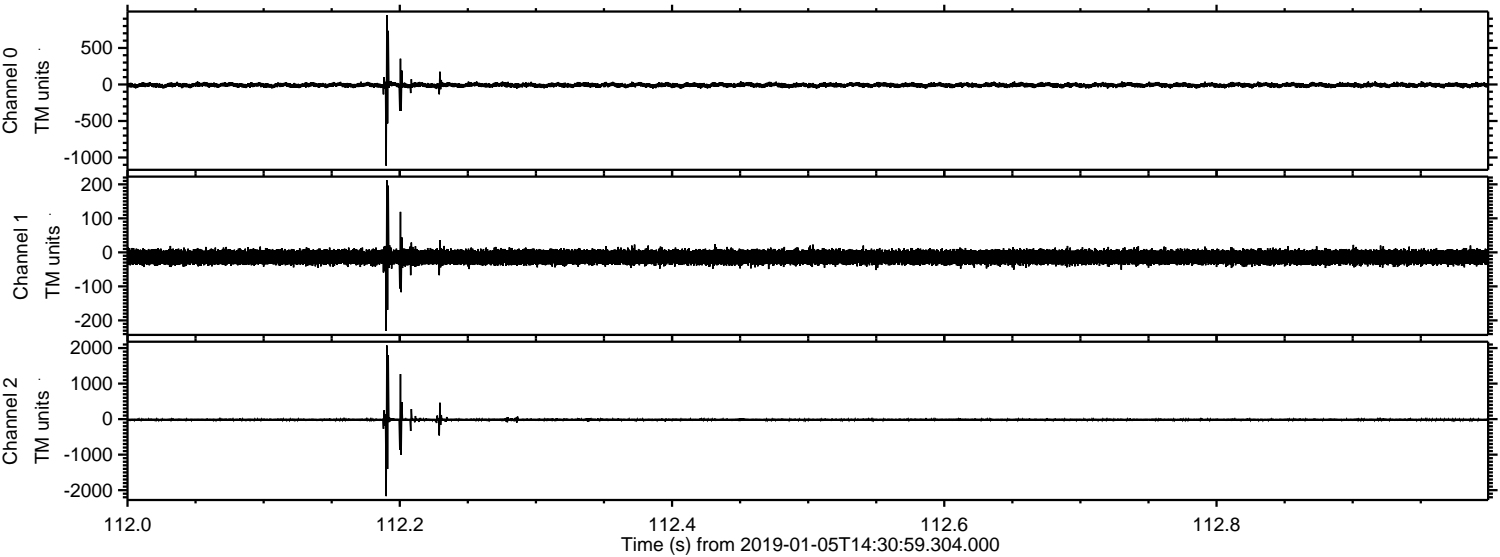


Processed Sat Jan 5 15:39:06 2019 by ELM ver.2012-10-06 from 001__elm20190105_143058__dat00.bin



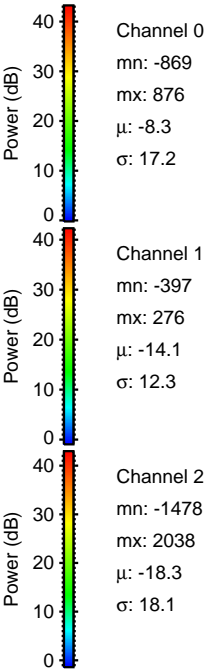
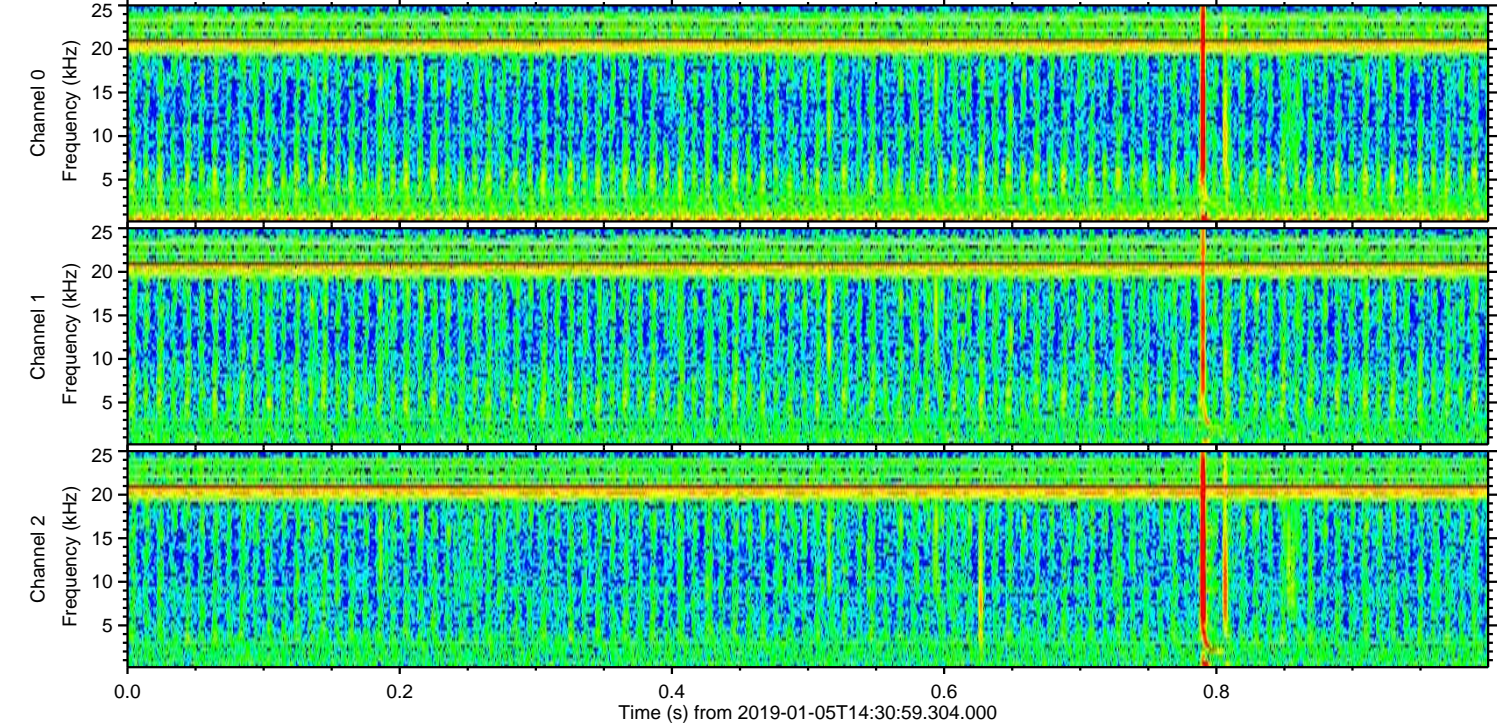
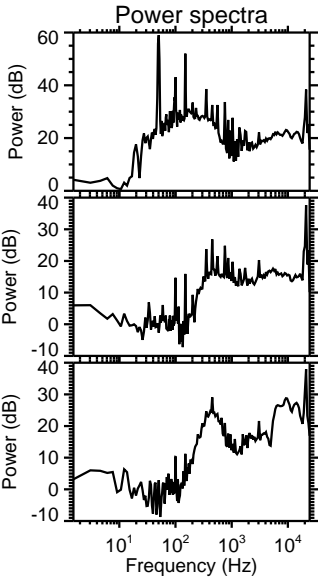
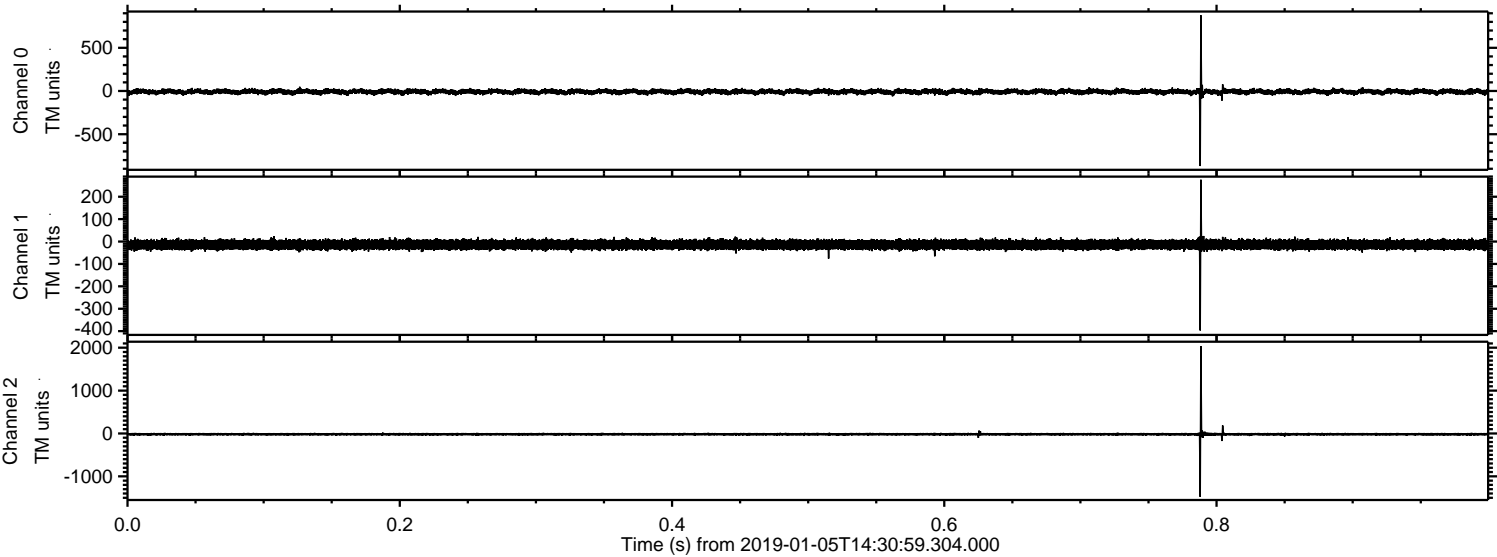
ELMAVAN 3D WAVEFORMS (Measured data sampled at 50 kHz) 51000 packets of 144 samples from 2019-01-05T14:30:59.304.000. Part 113/147

Processed Sat Jan 5 15:39:06 2019 by ELM ver.2012-10-06 from 001__elm20190105_143058__dat00.bin

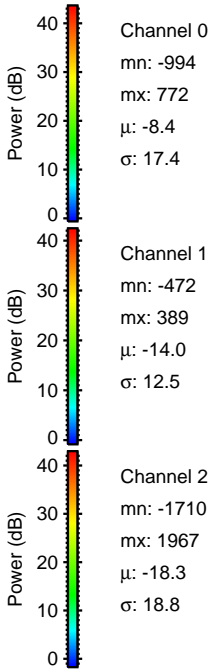
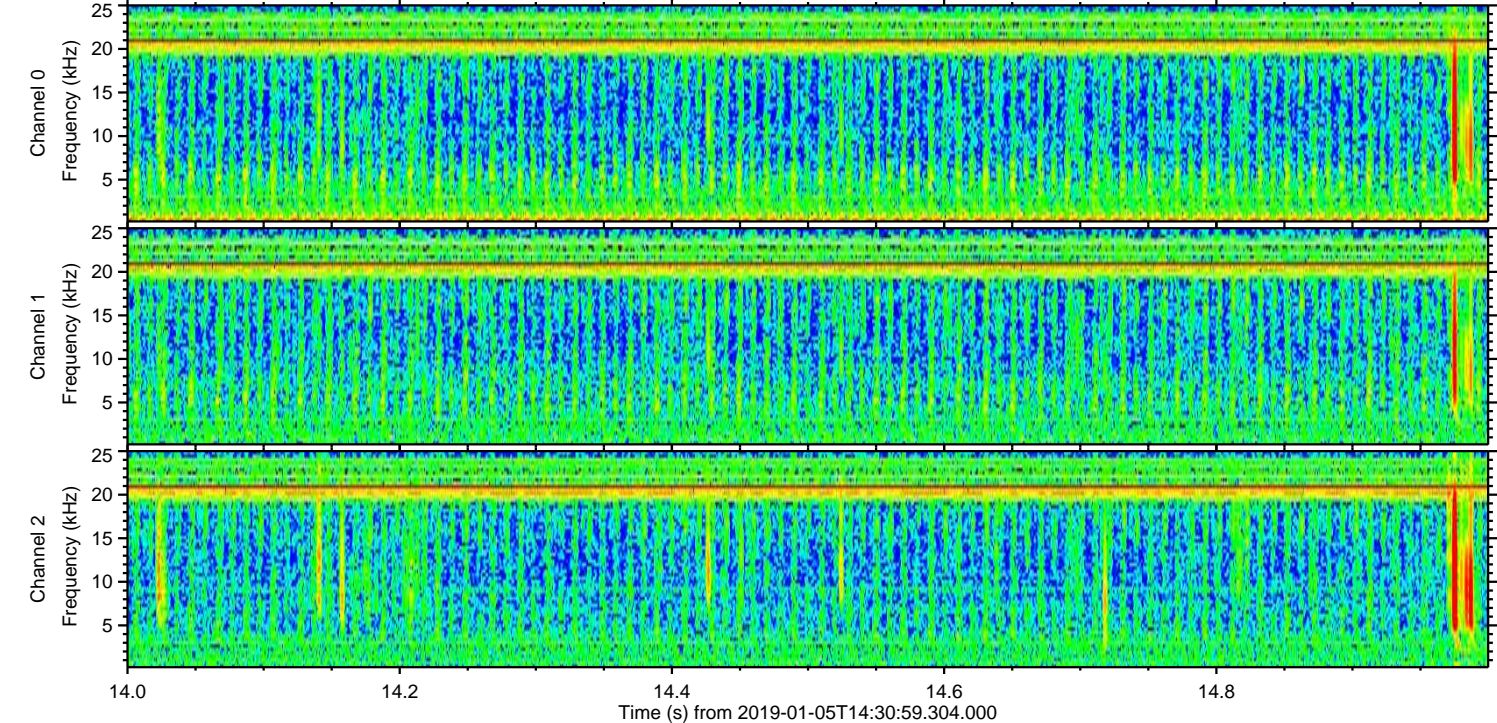
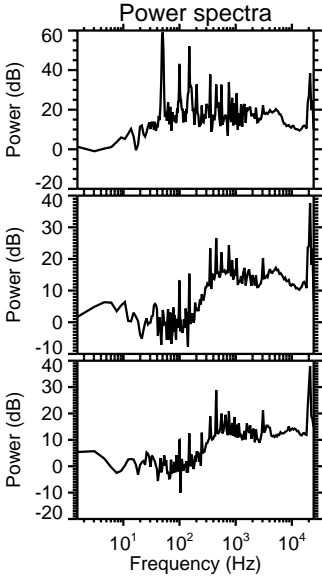
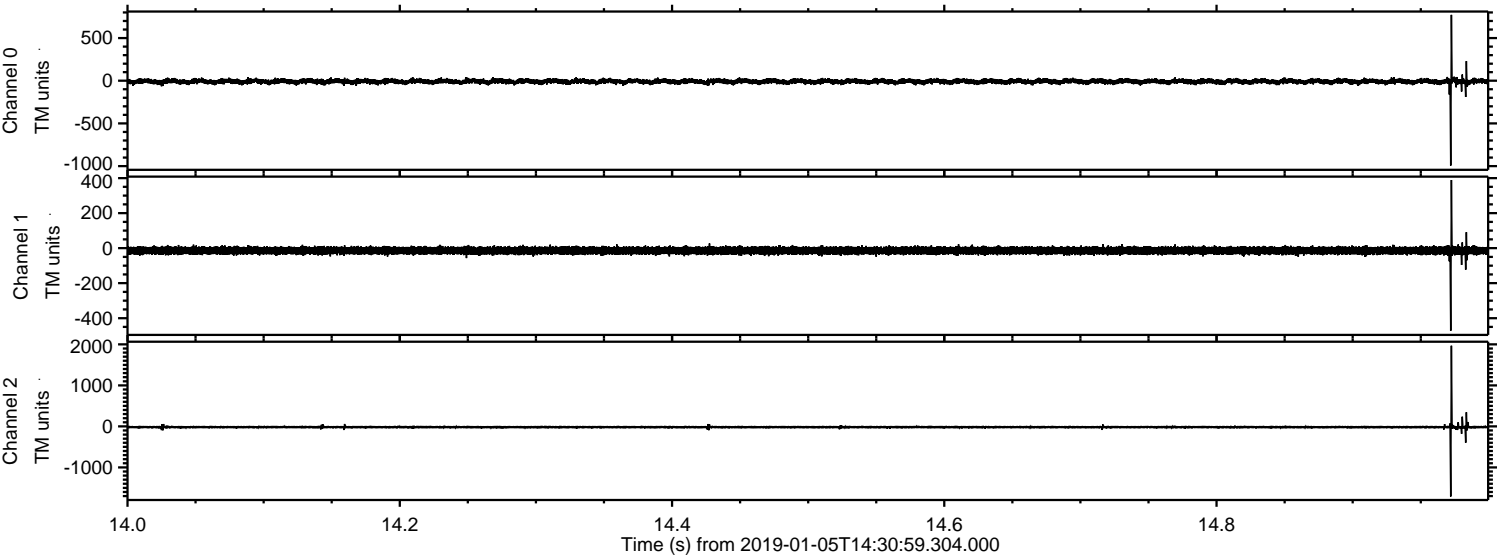


ELMAVAN 3D WAVEFORMS (Measured data sampled at 50 kHz) 51000 packets of 144 samples from 2019-01-05T14:30:59.304.000. Part 1/147

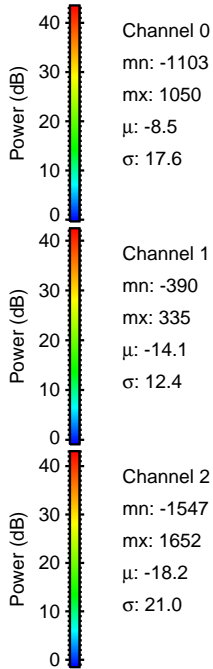
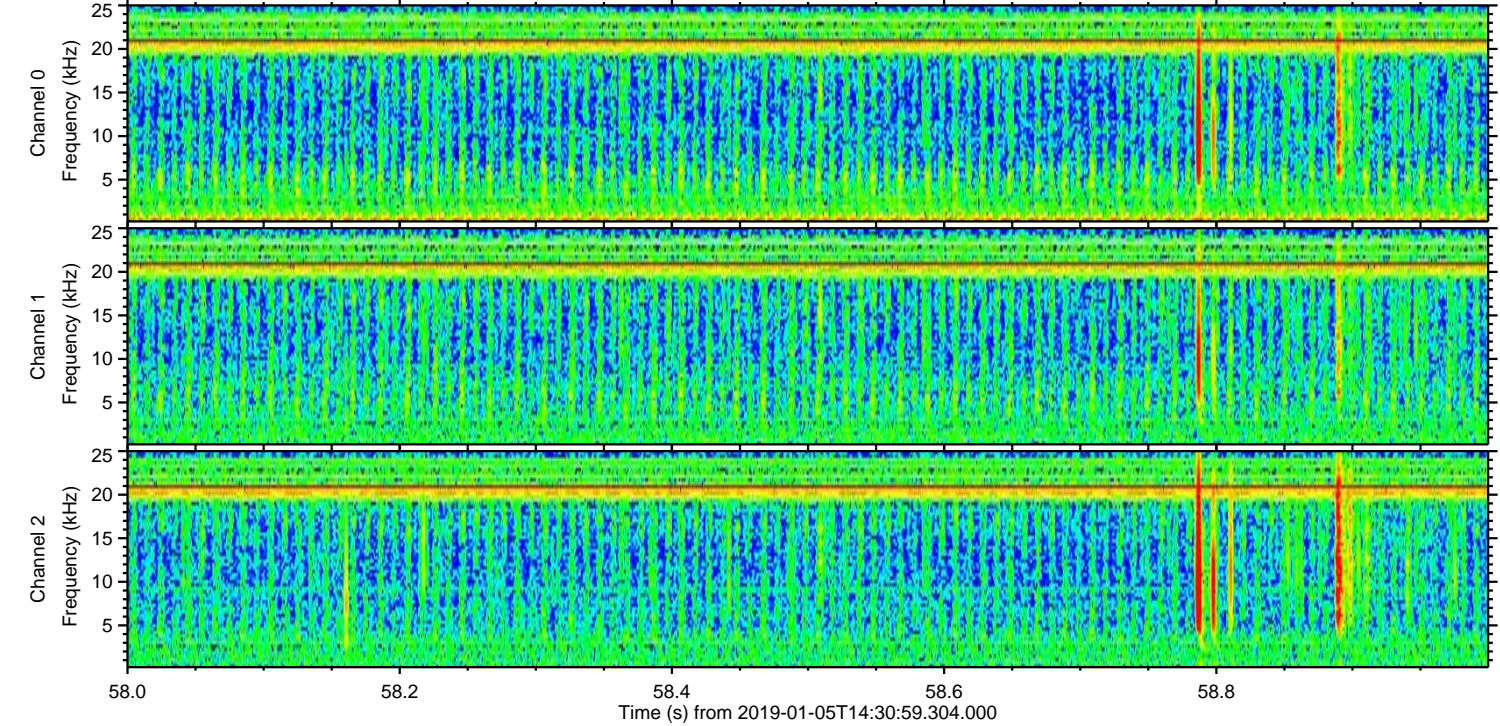
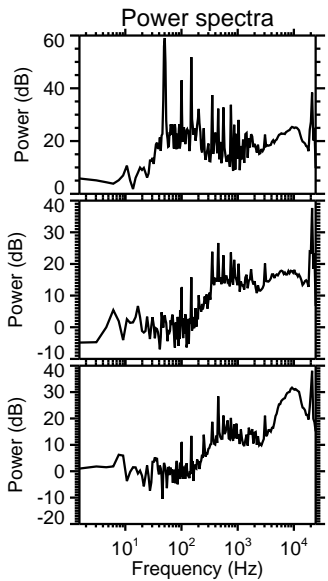
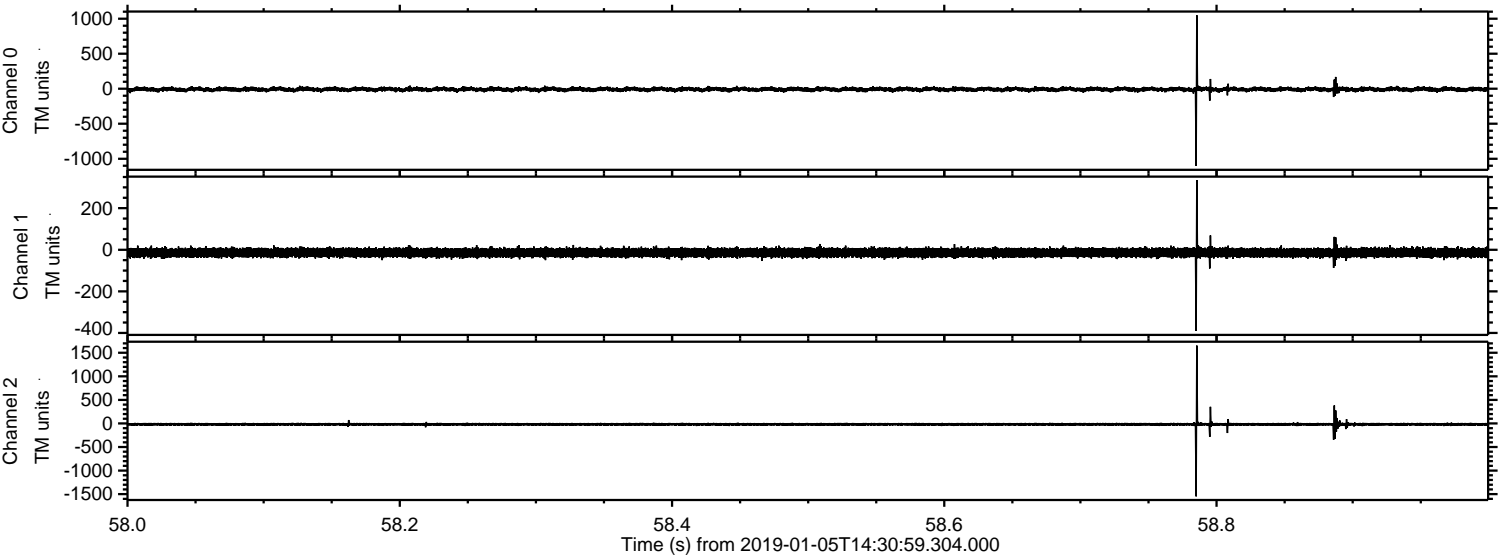
Processed Sat Jan 5 15:39:07 2019 by ELM ver.2012-10-06 from 001__elm20190105_143058__dat00.bin



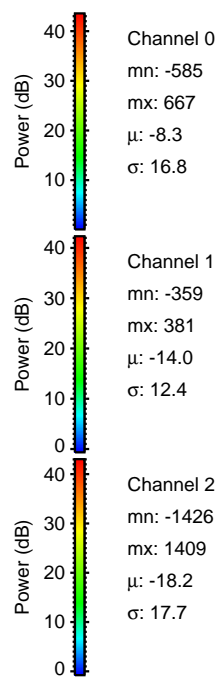
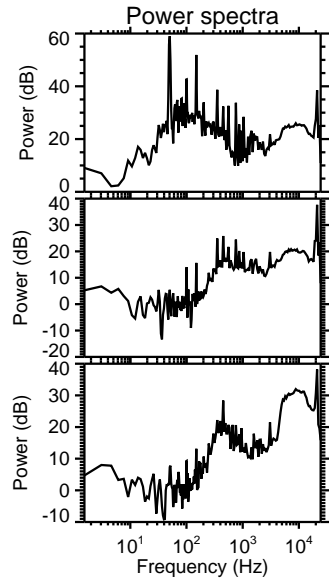
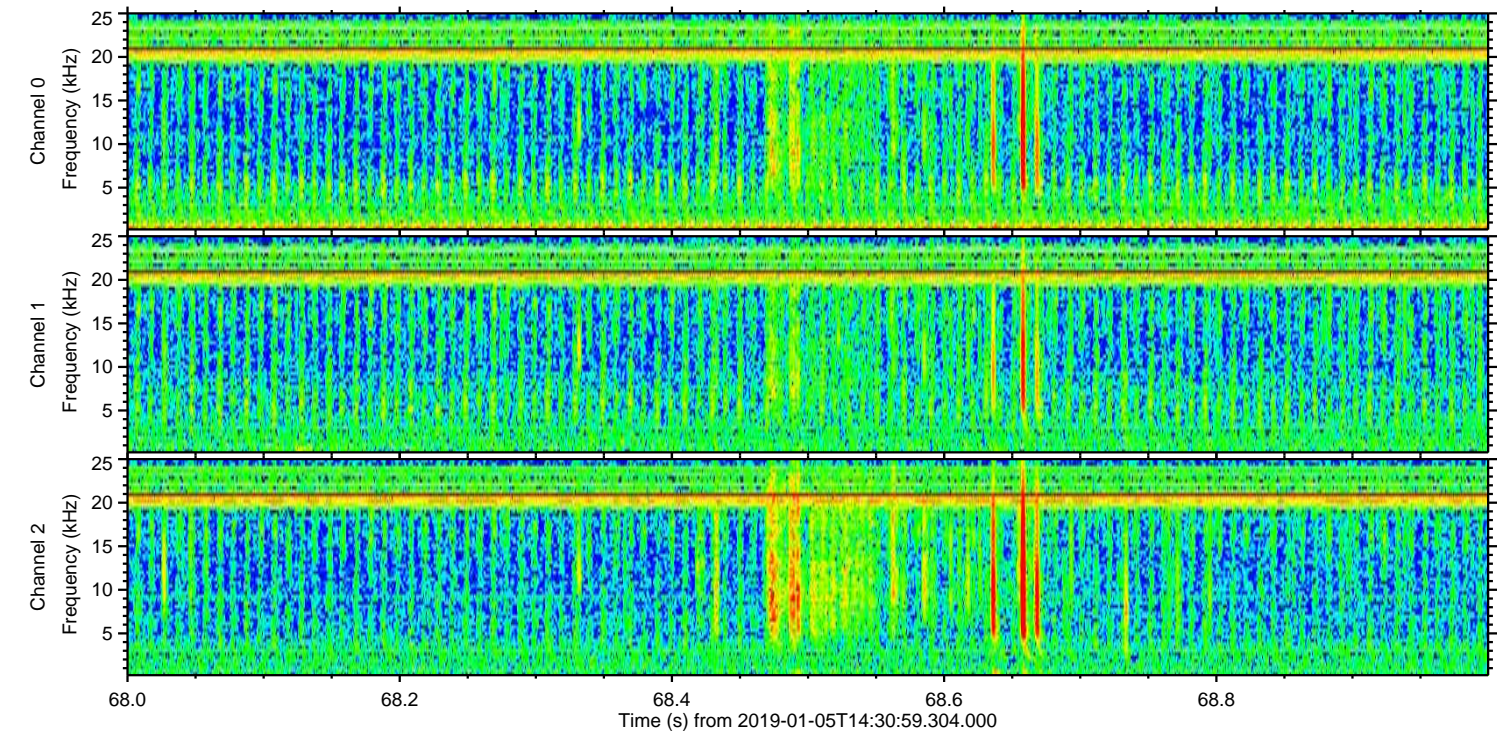
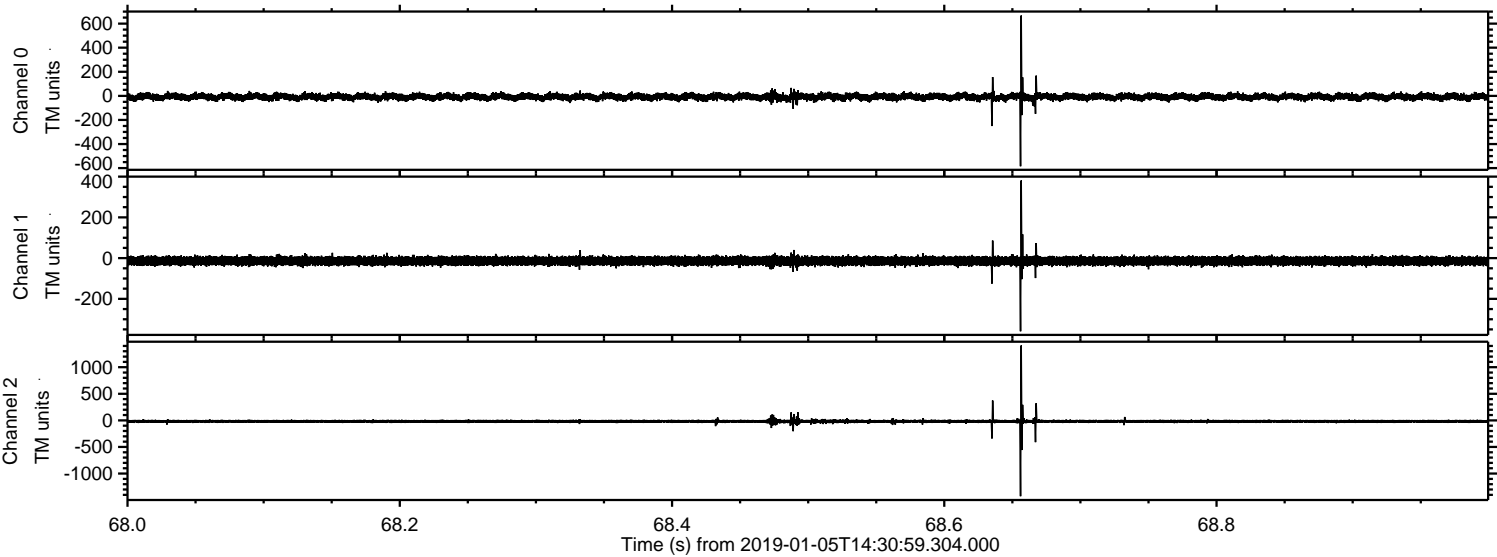
Processed Sat Jan 5 15:39:08 2019 by ELM ver.2012-10-06 from 001__elm20190105_143058__dat00.bin



Processed Sat Jan 5 15:39:08 2019 by ELM ver.2012-10-06 from 001__elm20190105_143058__dat00.bin



Processed Sat Jan 5 15:39:09 2019 by ELM ver.2012-10-06 from 001__elm20190105_143058__dat00.bin



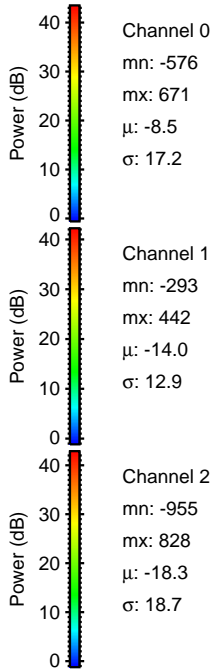
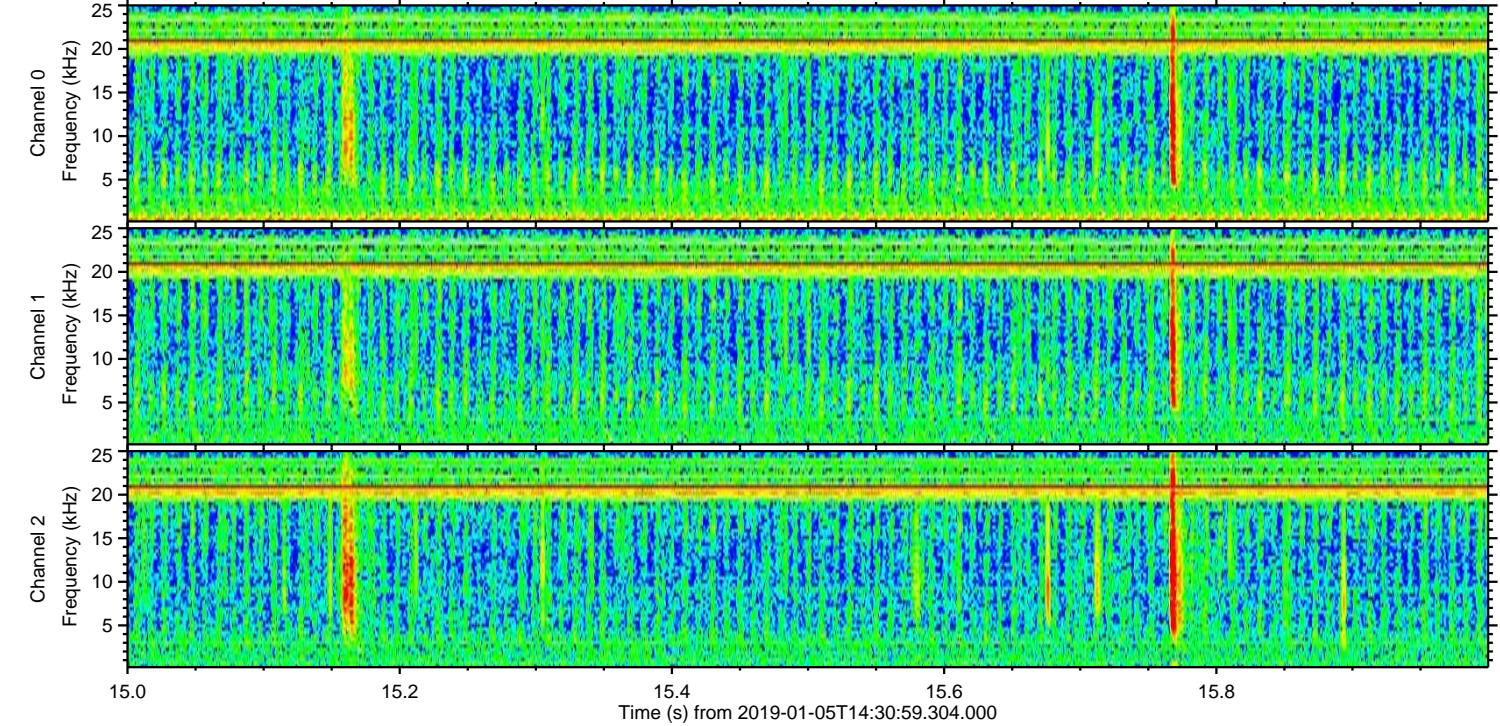
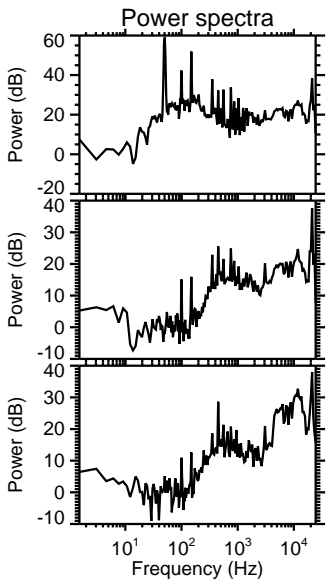
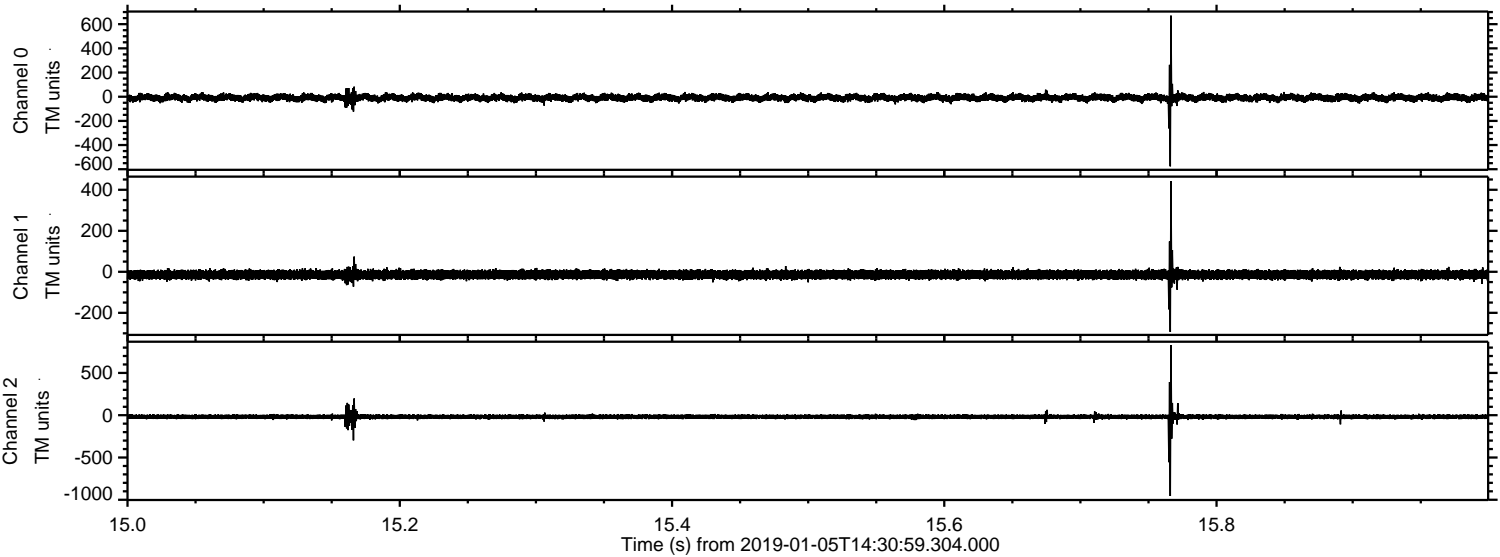
Power spectra

Channel 0
mn: -585
mx: 667
 μ : -8.3
 σ : 16.8

Channel 1
mn: -359
mx: 381
 μ : -14.0
 σ : 12.4

Channel 2
mn: -1426
mx: 1409
 μ : -18.2
 σ : 17.7

Processed Sat Jan 5 15:39:10 2019 by ELM ver.2012-10-06 from 001__elm20190105_143058__dat00.bin



Processed Sat Jan 5 15:39:10 2019 by ELM ver.2012-10-06 from 001__elm20190105_143058__dat00.bin

