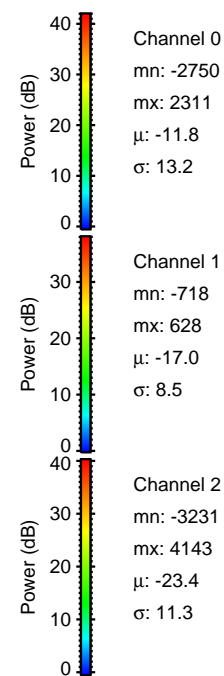
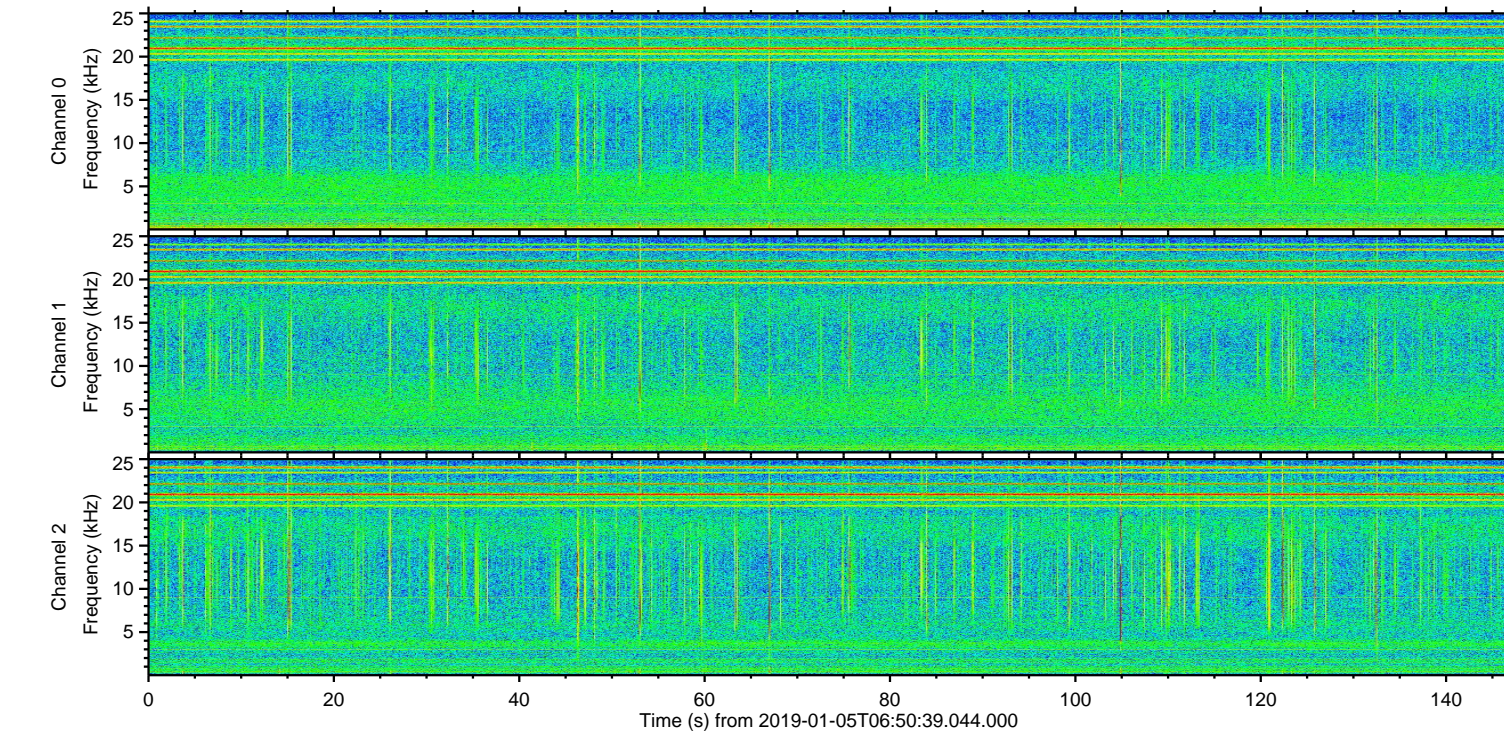
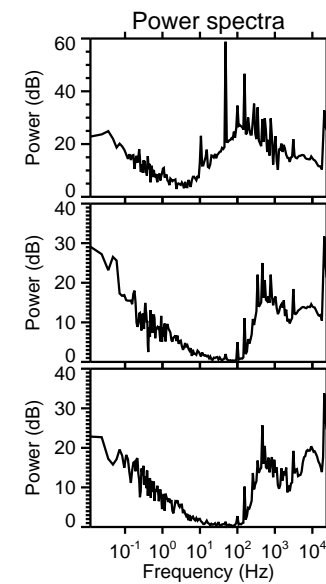
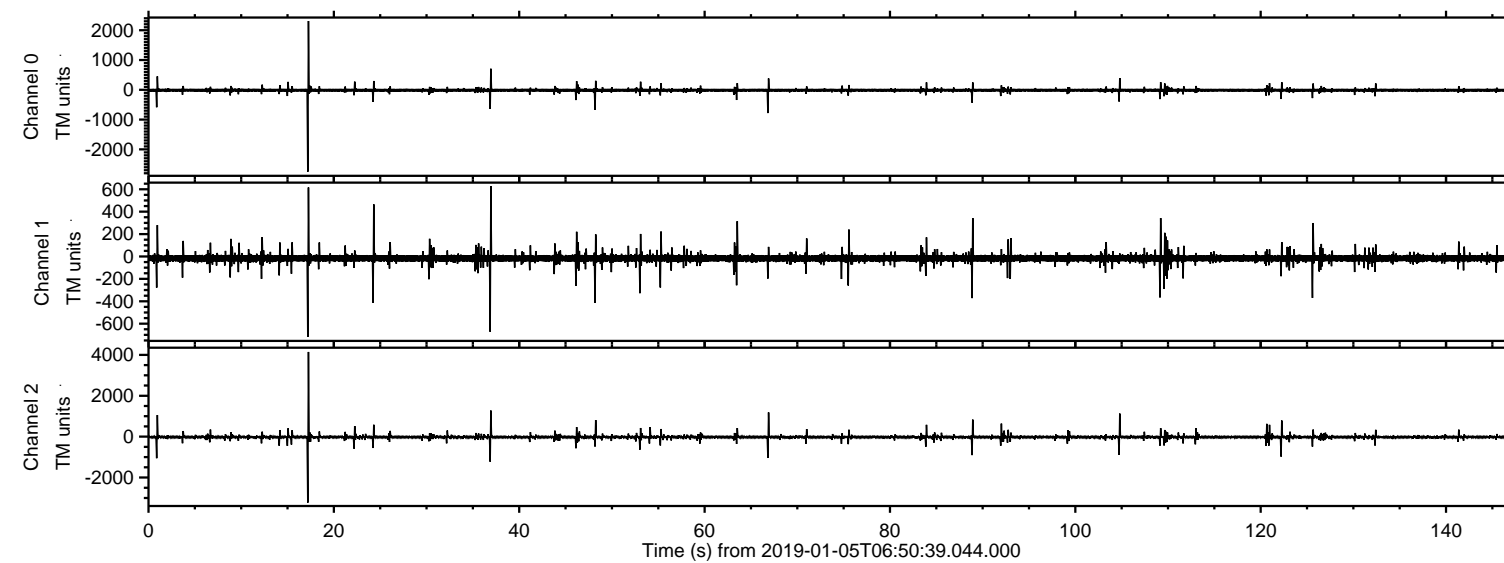
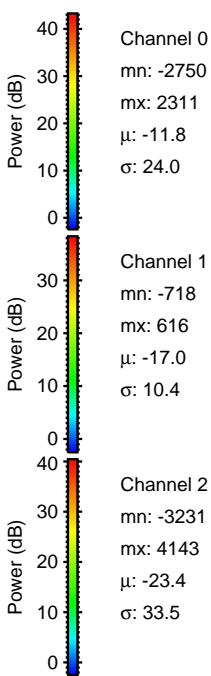
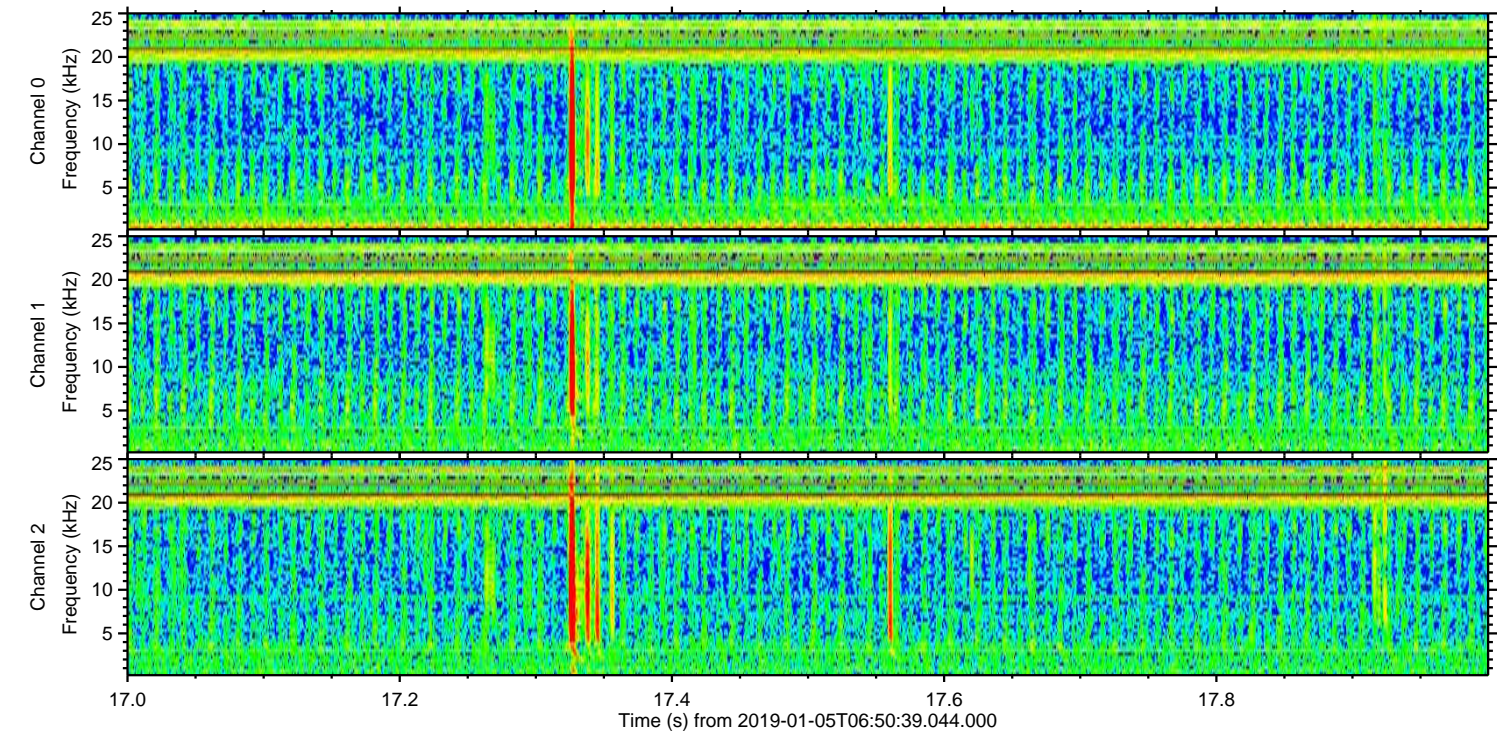
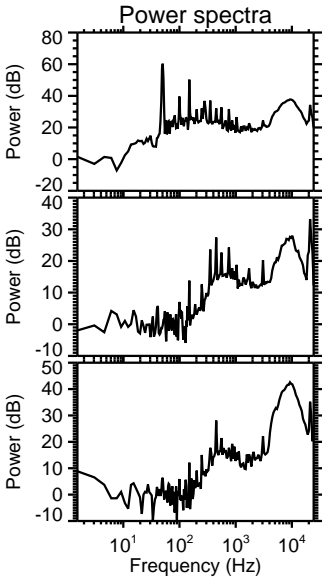
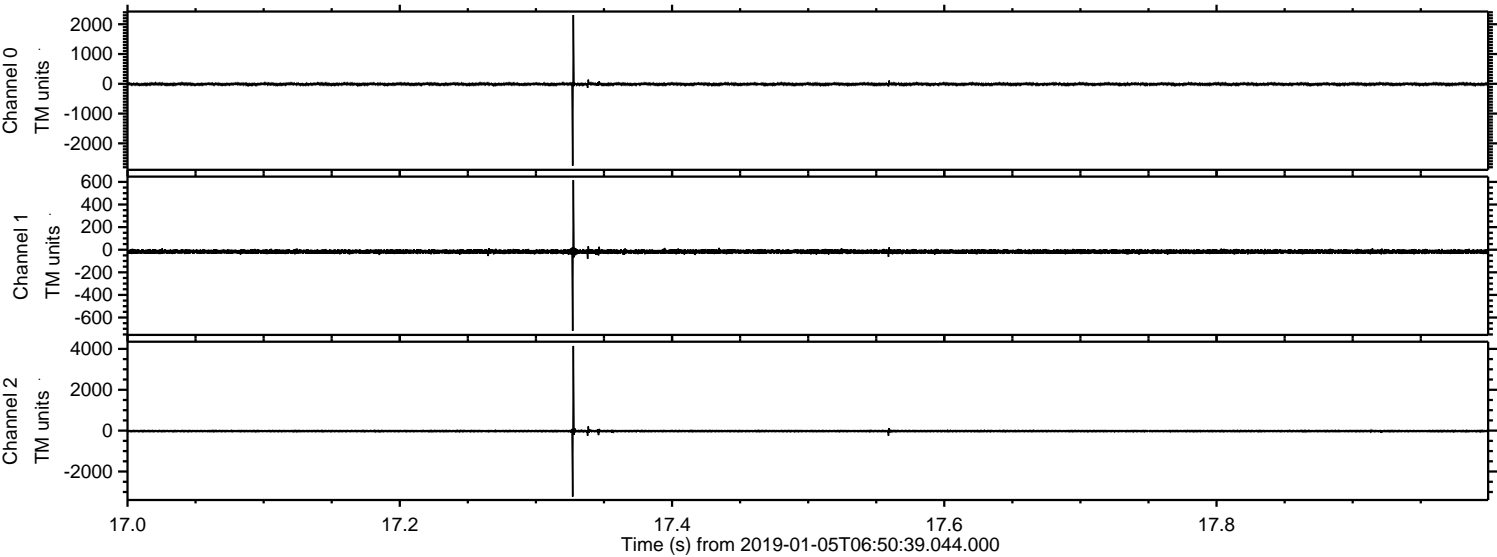


ELMAVAN 3D WAVEFORMS (Measured data sampled at 50 kHz) 51000 packets of 144 samples from 2019-01-05T06:50:39.044.000.

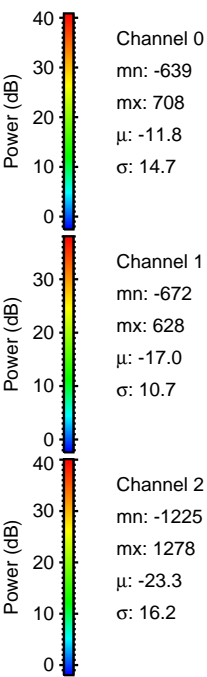
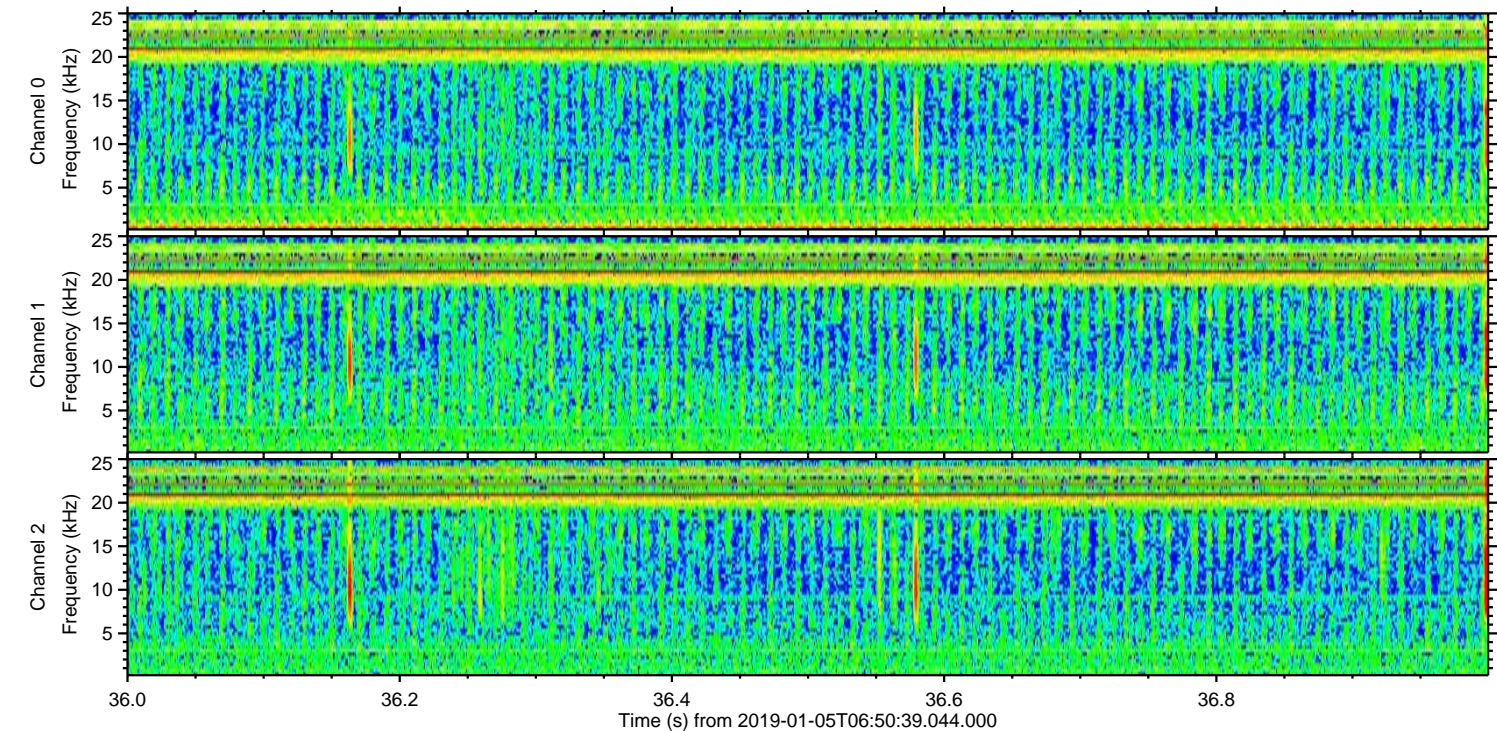
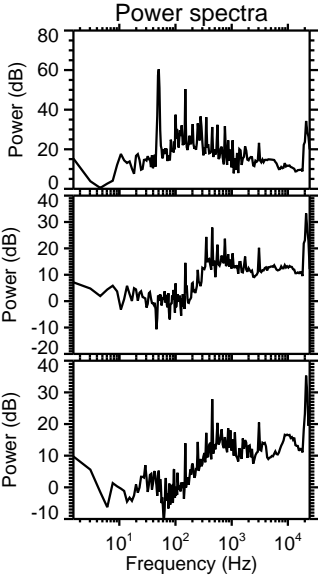
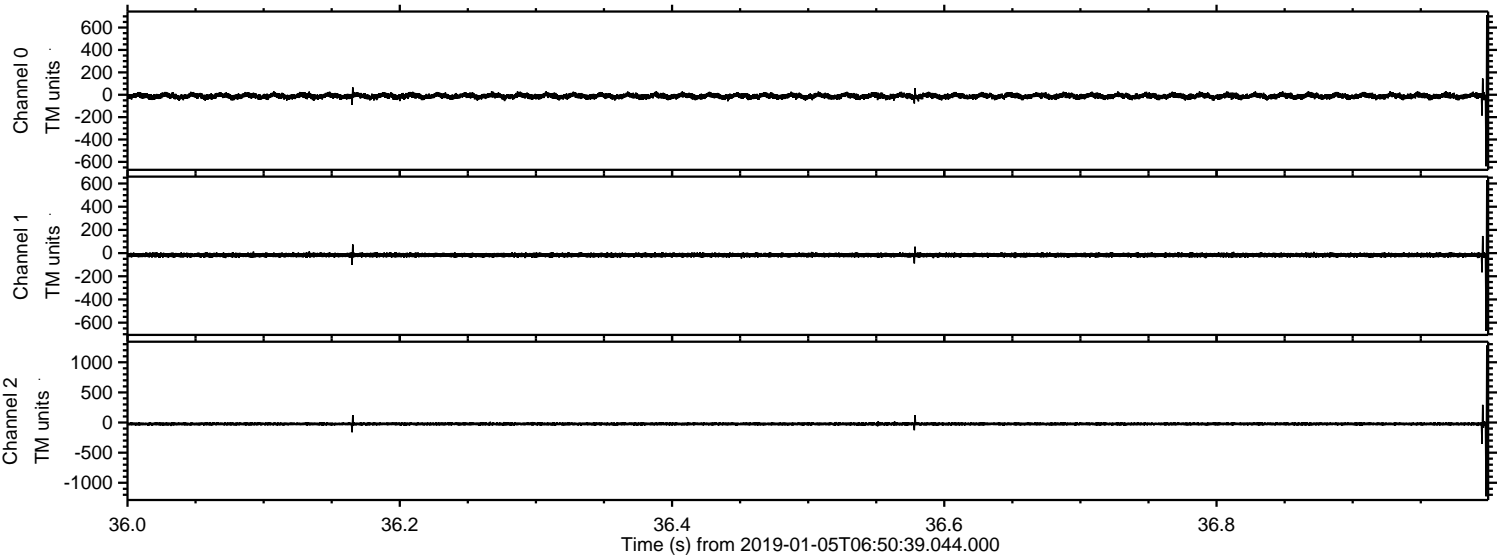
Processed Sat Jan 5 07:58:33 2019 by ELM ver.2012-10-06 from 001__elm20190105_065038__dat00.bin



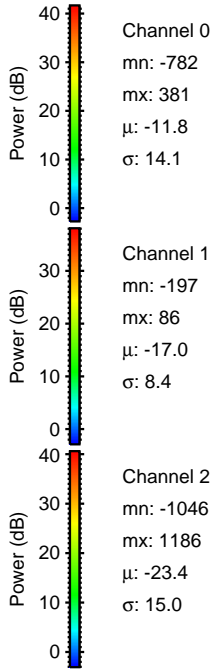
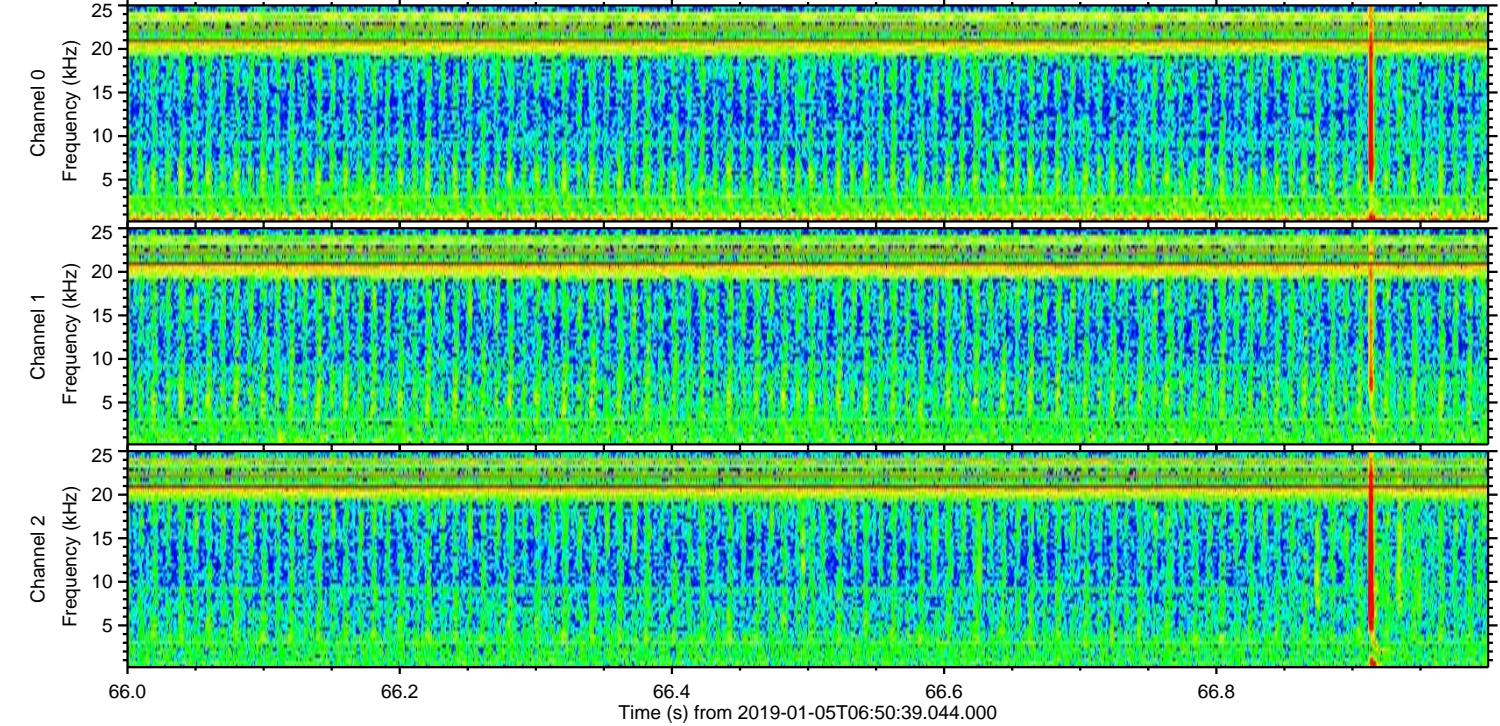
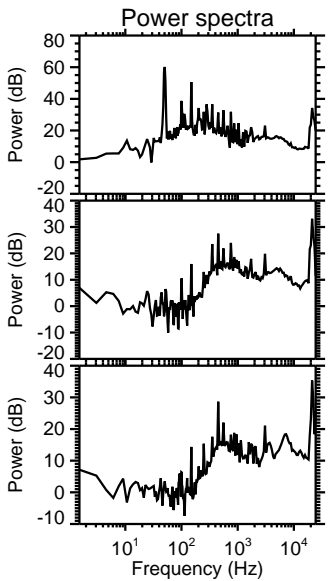
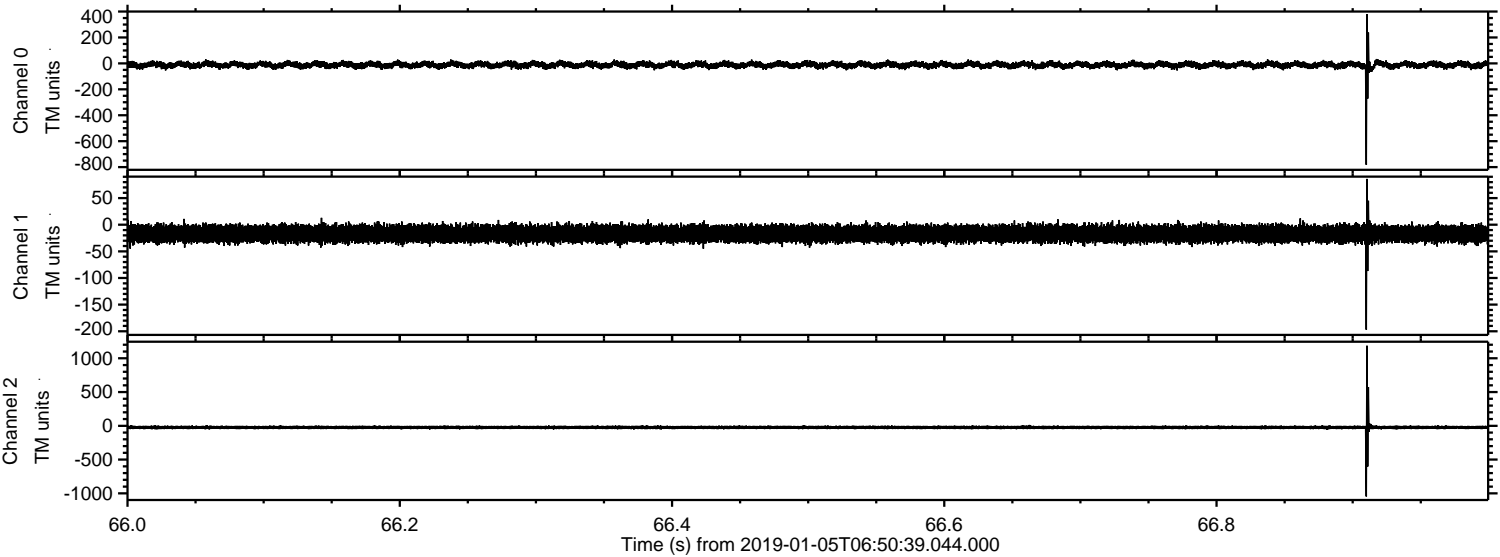
Processed Sat Jan 5 07:58:40 2019 by ELM ver.2012-10-06 from 001__elm20190105_065038__dat00.bin



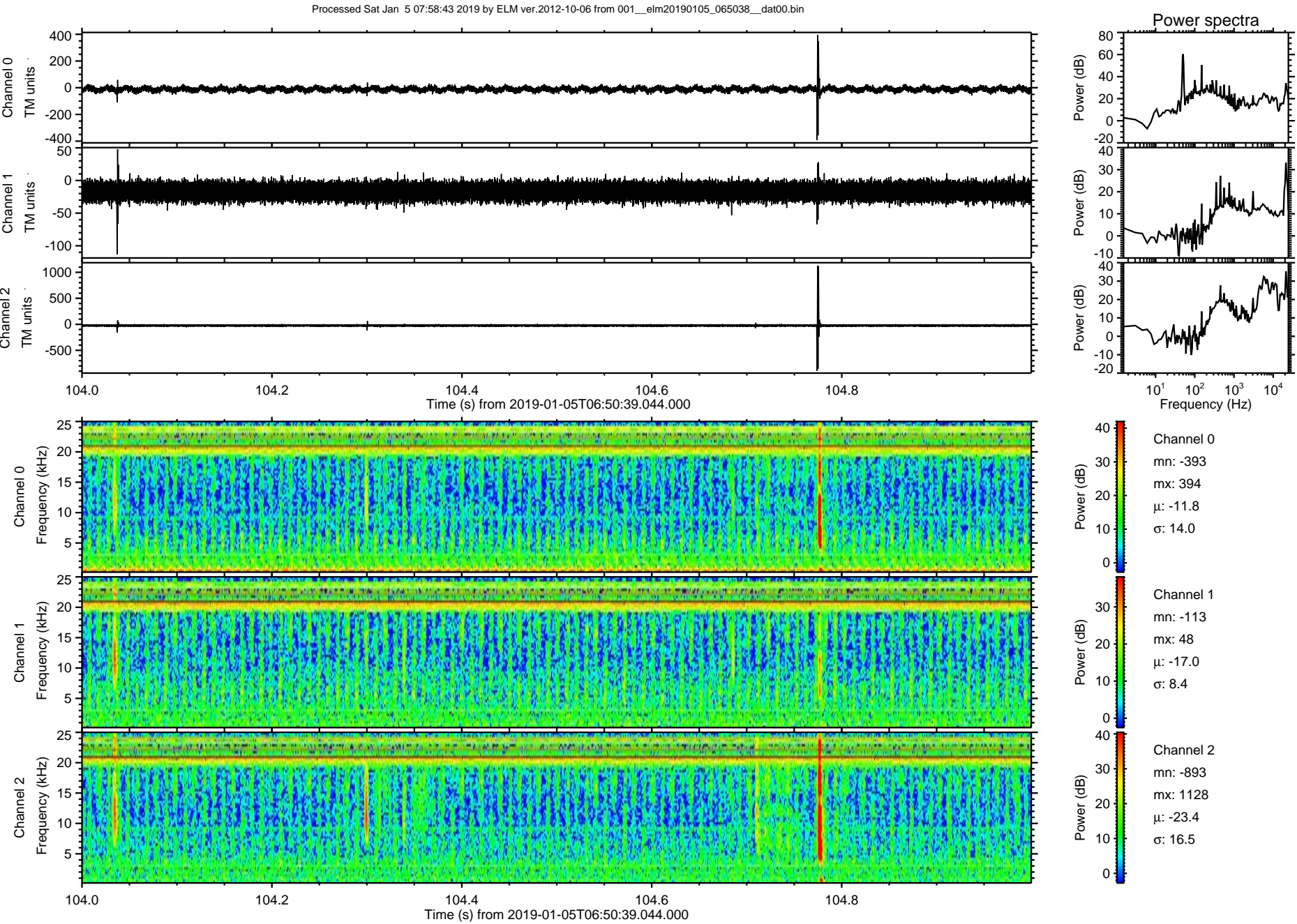
Processed Sat Jan 5 07:58:41 2019 by ELM ver.2012-10-06 from 001__elm20190105_065038__dat00.bin



Processed Sat Jan 5 07:58:42 2019 by ELM ver.2012-10-06 from 001__elm20190105_065038__dat00.bin

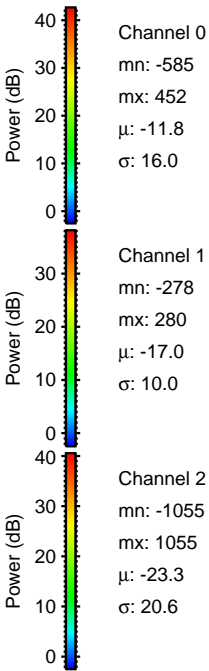
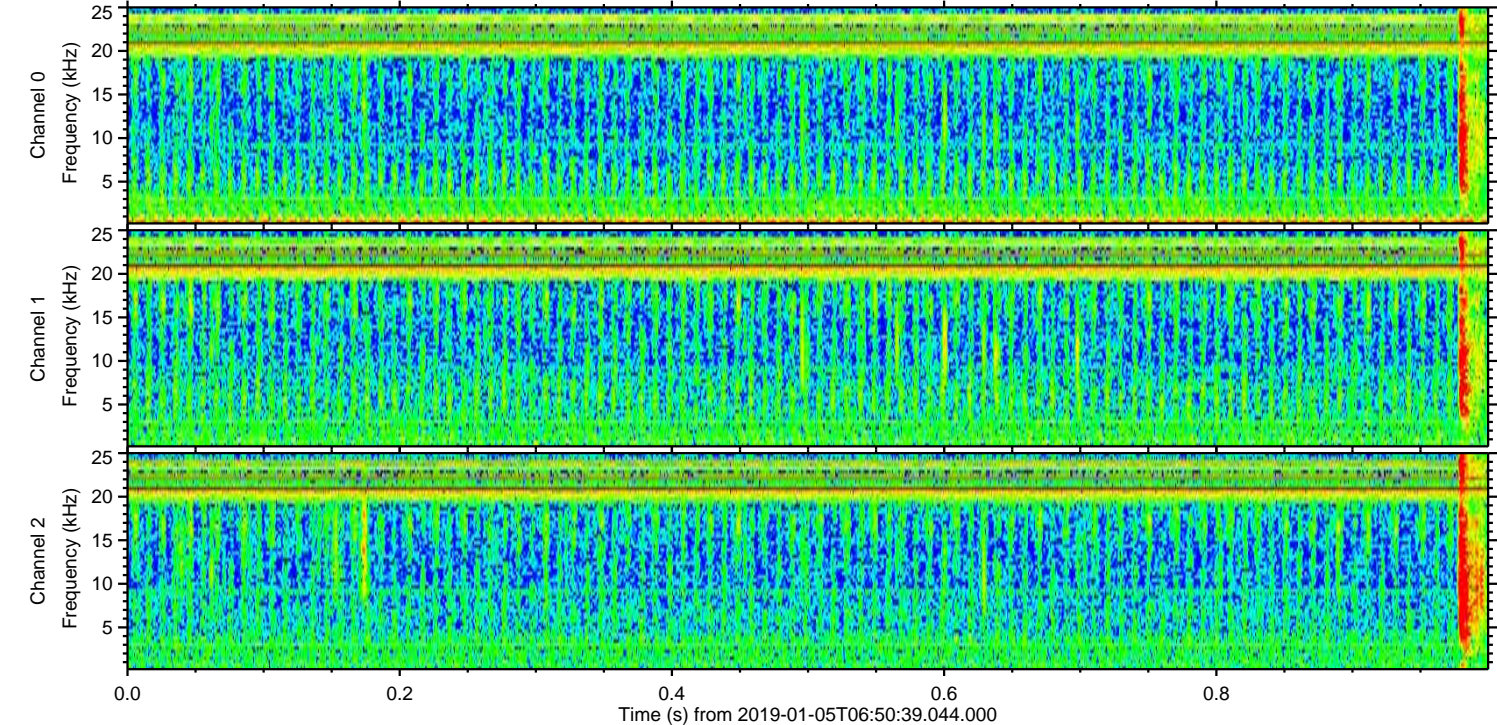
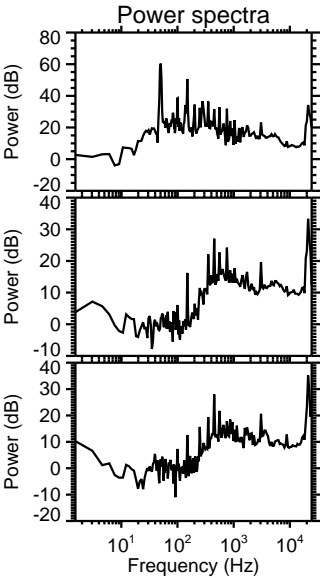
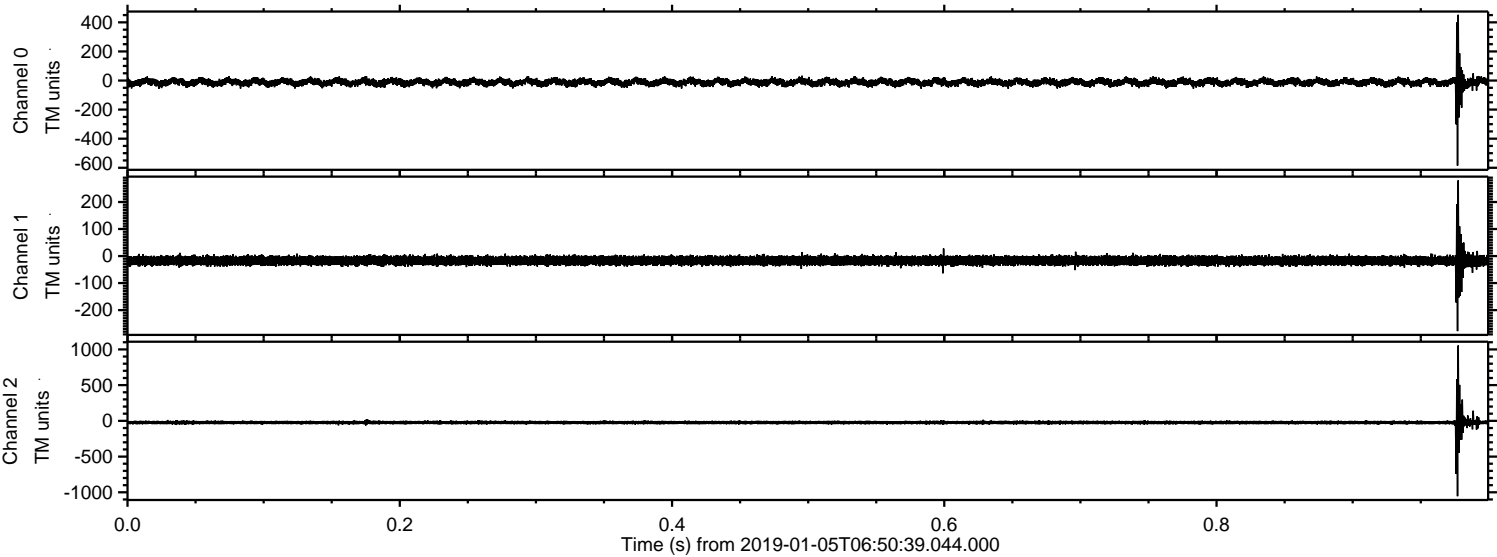


ELMAVAN 3D WAVEFORMS (Measured data sampled at 50 kHz) 51000 packets of 144 samples from 2019-01-05T06:50:39.044.000. Part 105/147



ELMAVAN 3D WAVEFORMS (Measured data sampled at 50 kHz) 51000 packets of 144 samples from 2019-01-05T06:50:39.044.000. Part 1/147

Processed Sat Jan 5 07:58:43 2019 by ELM ver.2012-10-06 from 001__elm20190105_065038__dat00.bin



Power spectra

Channel 0

mn: -585
mx: 452
 μ : -11.8
 σ : 16.0

Channel 1

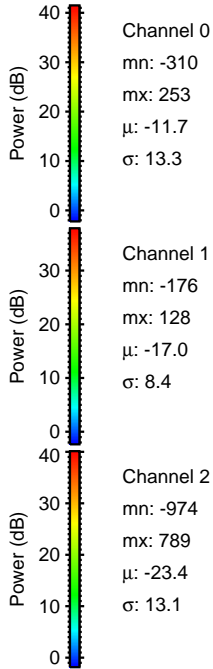
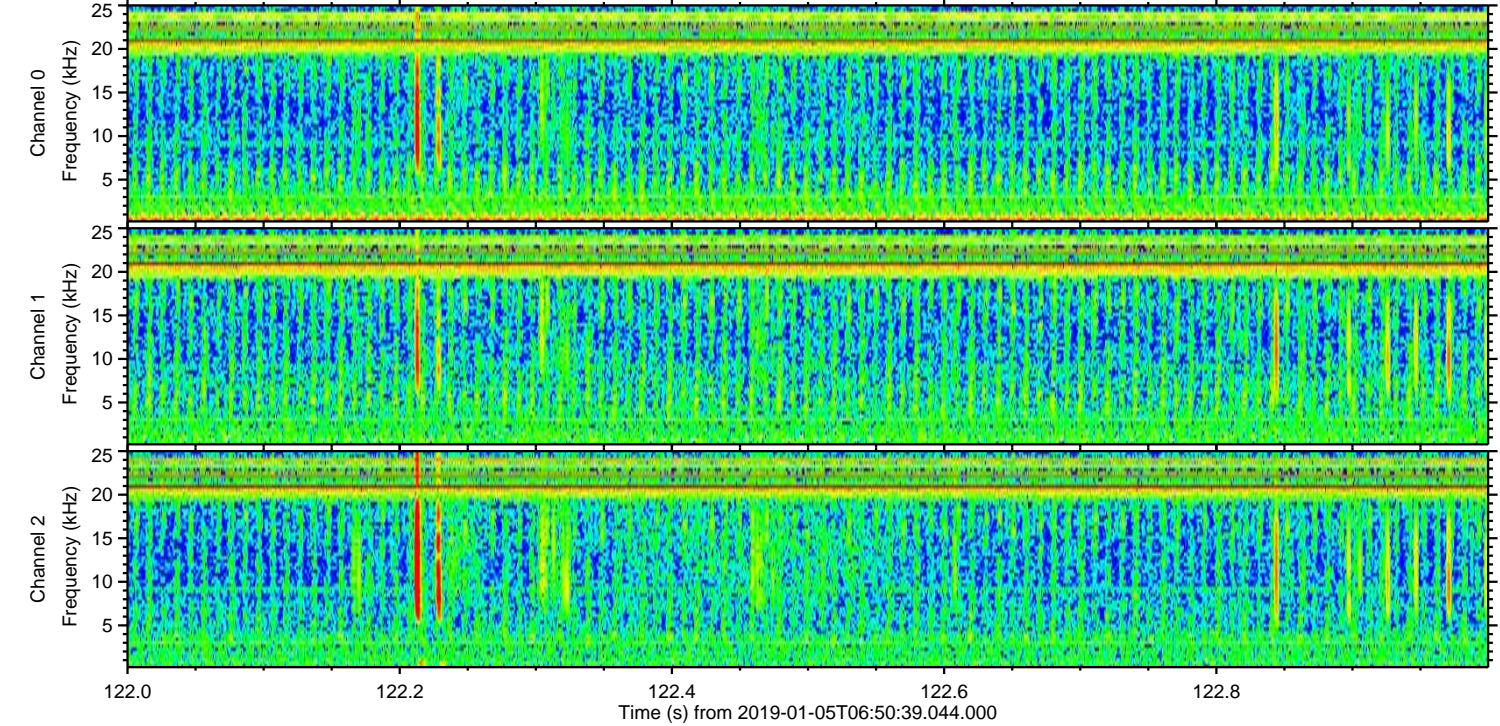
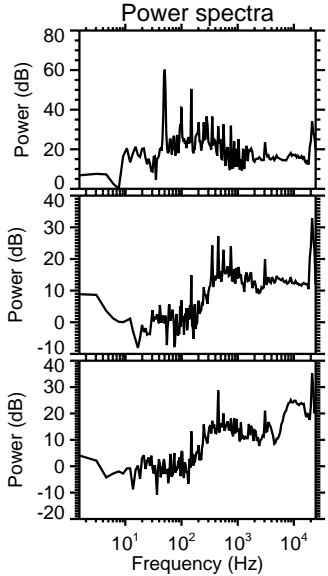
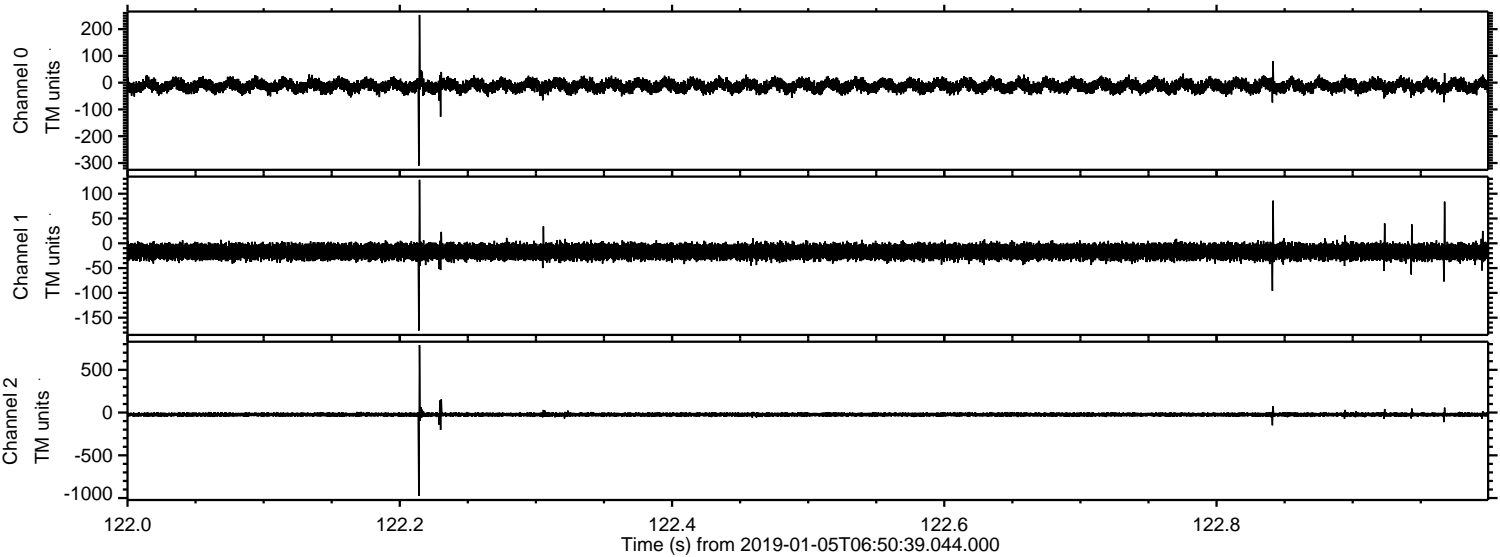
mn: -278
mx: 280
 μ : -17.0
 σ : 10.0

Channel 2

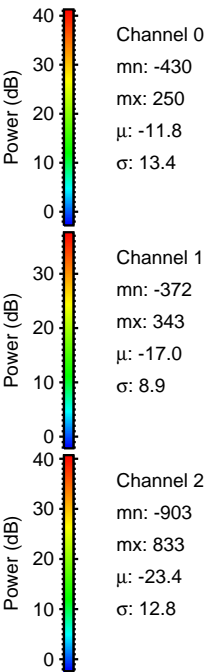
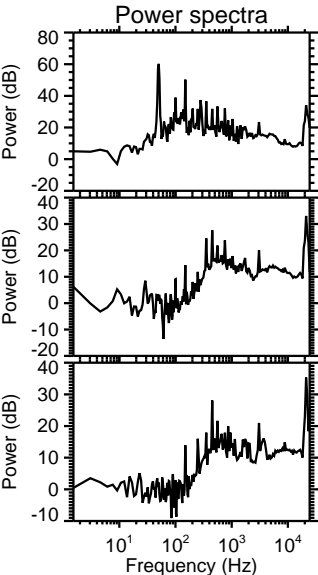
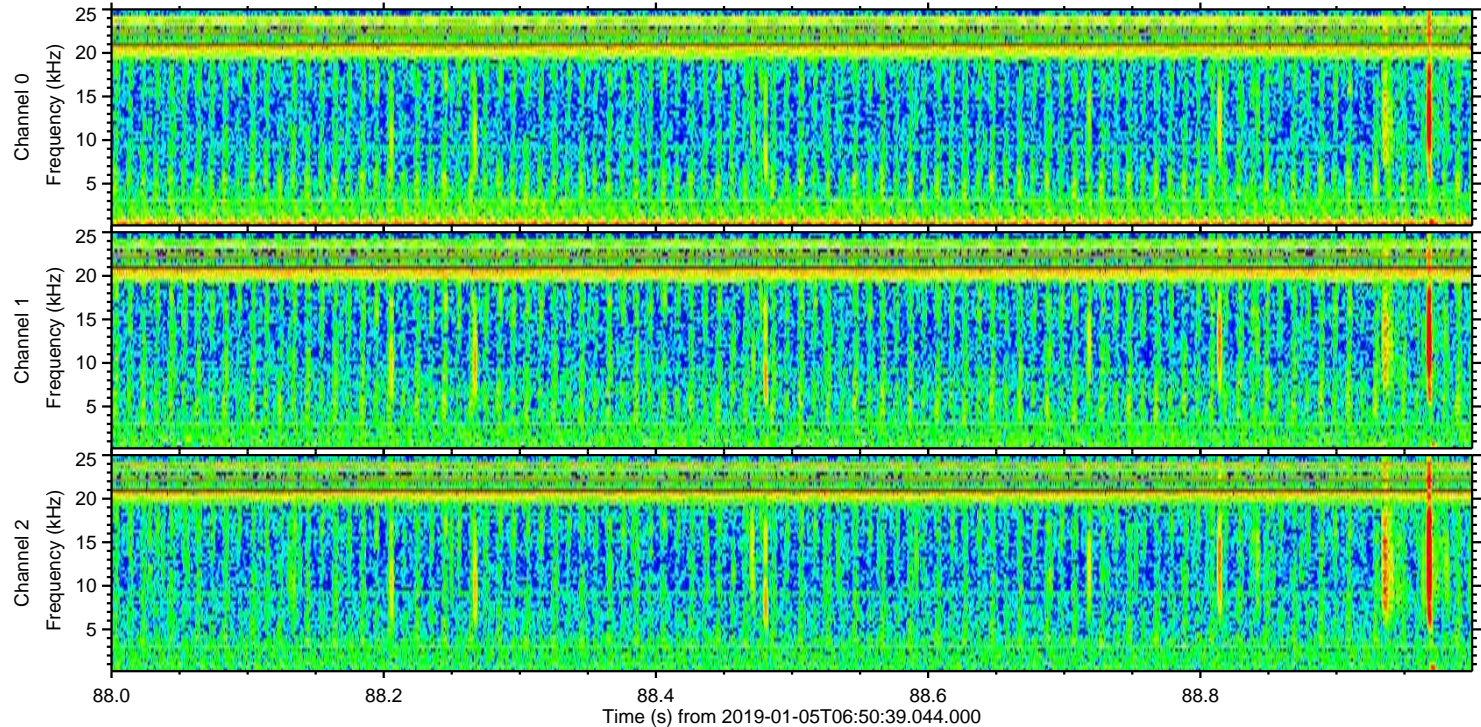
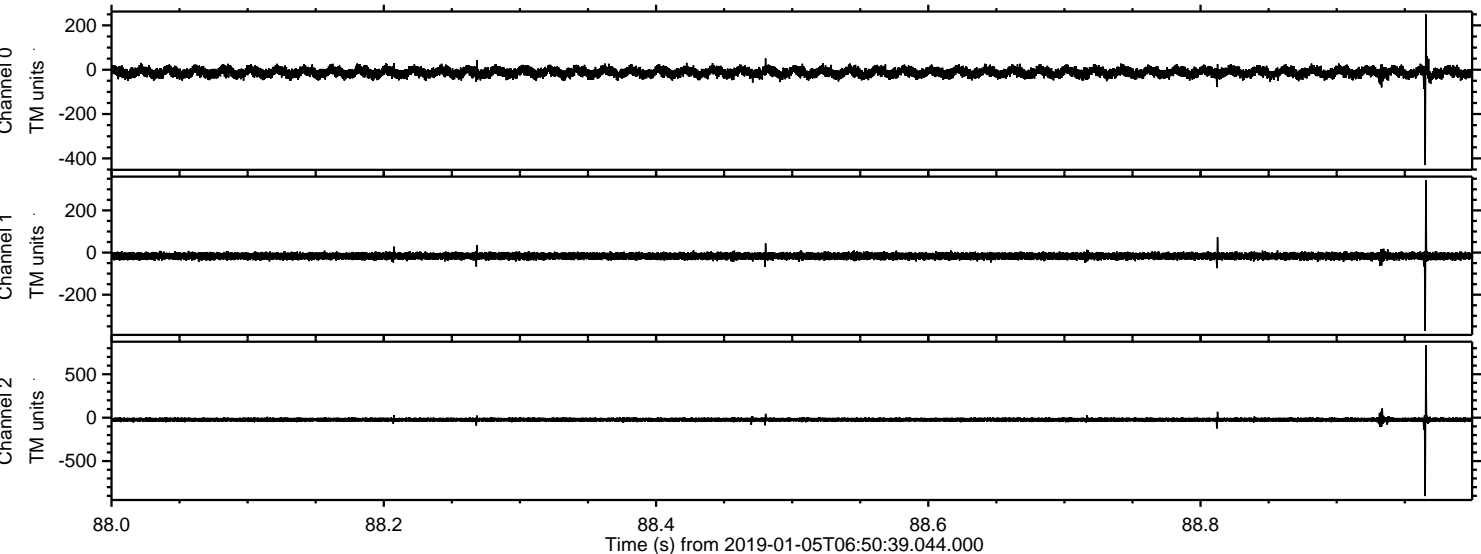
mn: -1055
mx: 1055
 μ : -23.3
 σ : 20.6

ELMAVAN 3D WAVEFORMS (Measured data sampled at 50 kHz) 51000 packets of 144 samples from 2019-01-05T06:50:39.044.000. Part 123/147

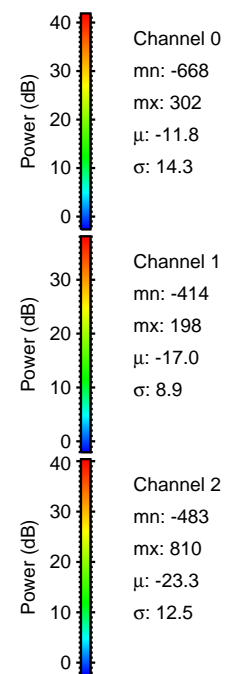
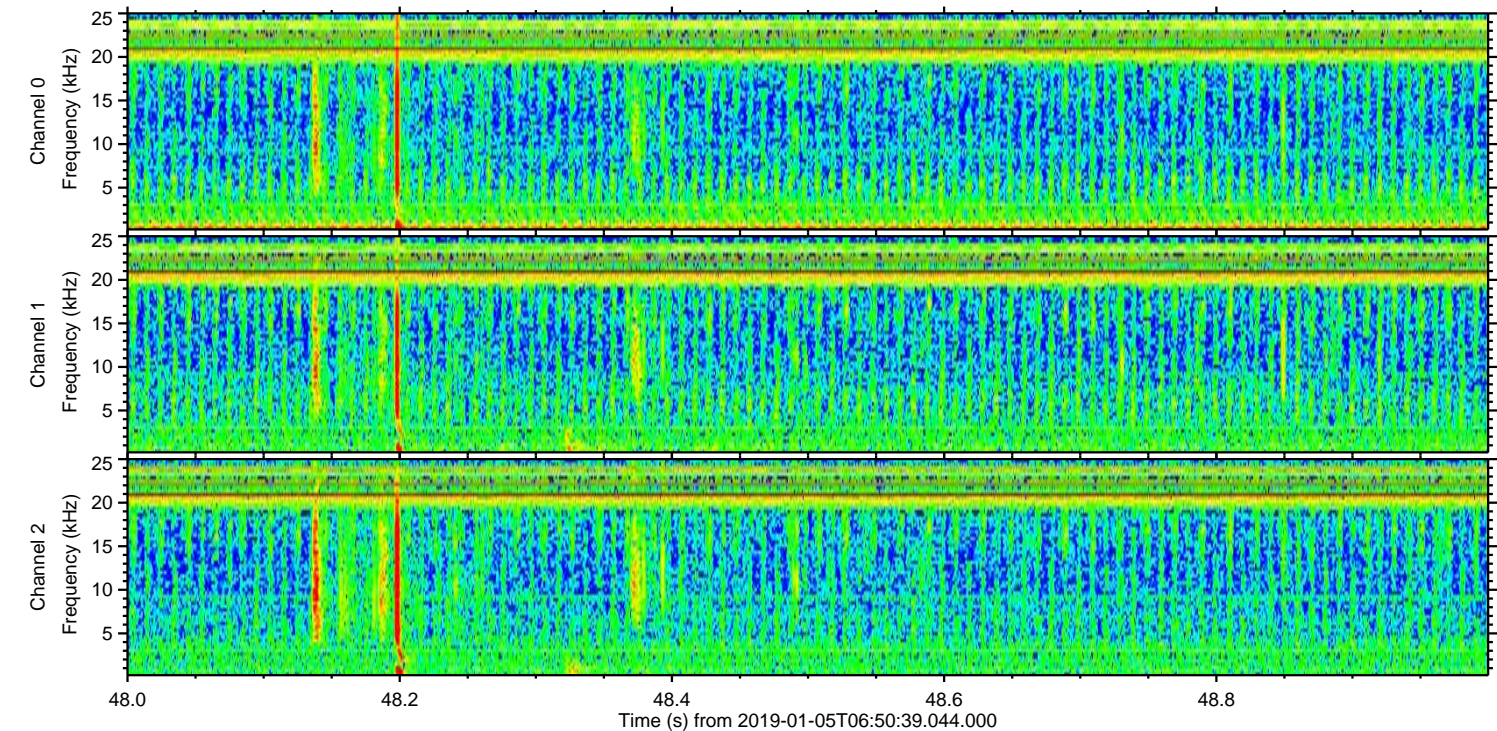
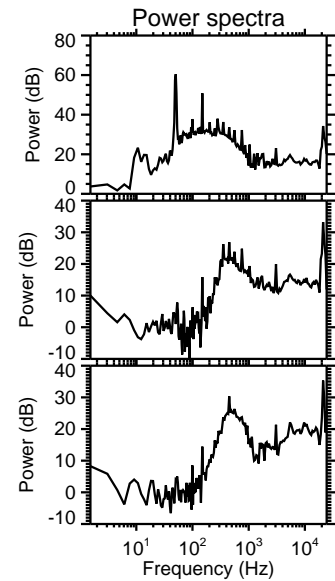
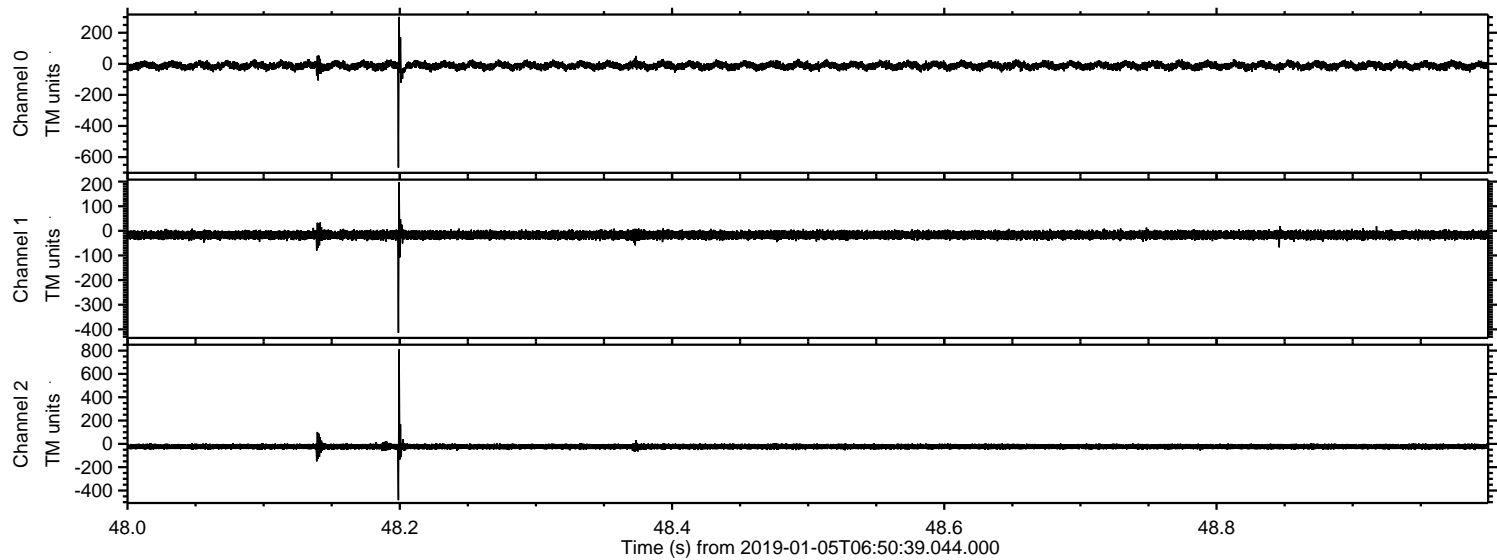
Processed Sat Jan 5 07:58:44 2019 by ELM ver.2012-10-06 from 001__elm20190105_065038__dat00.bin



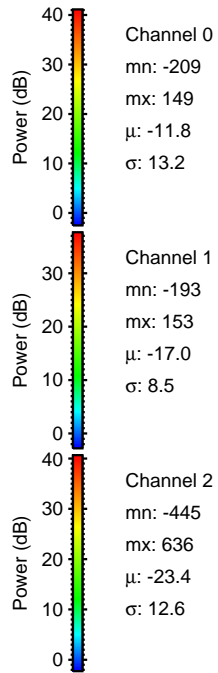
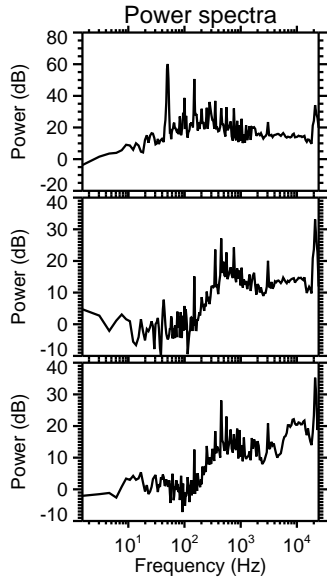
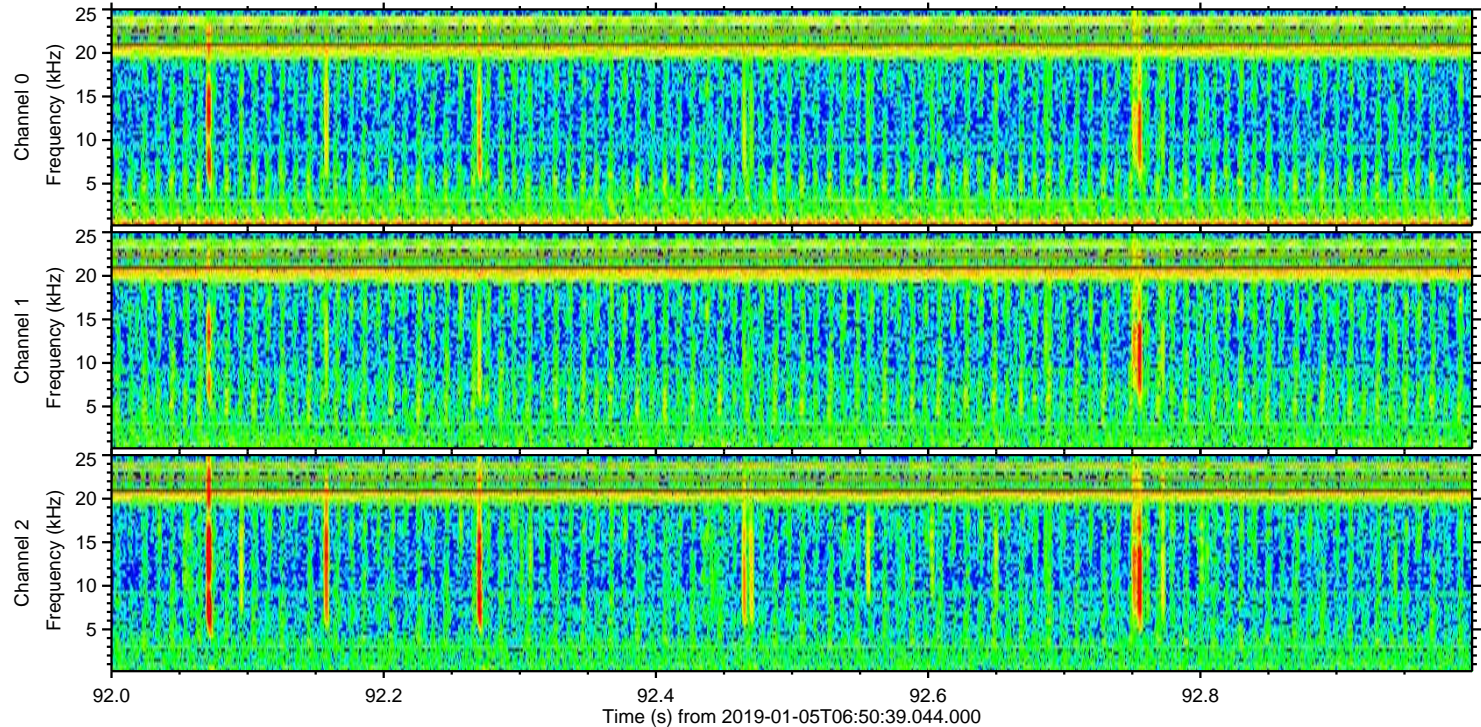
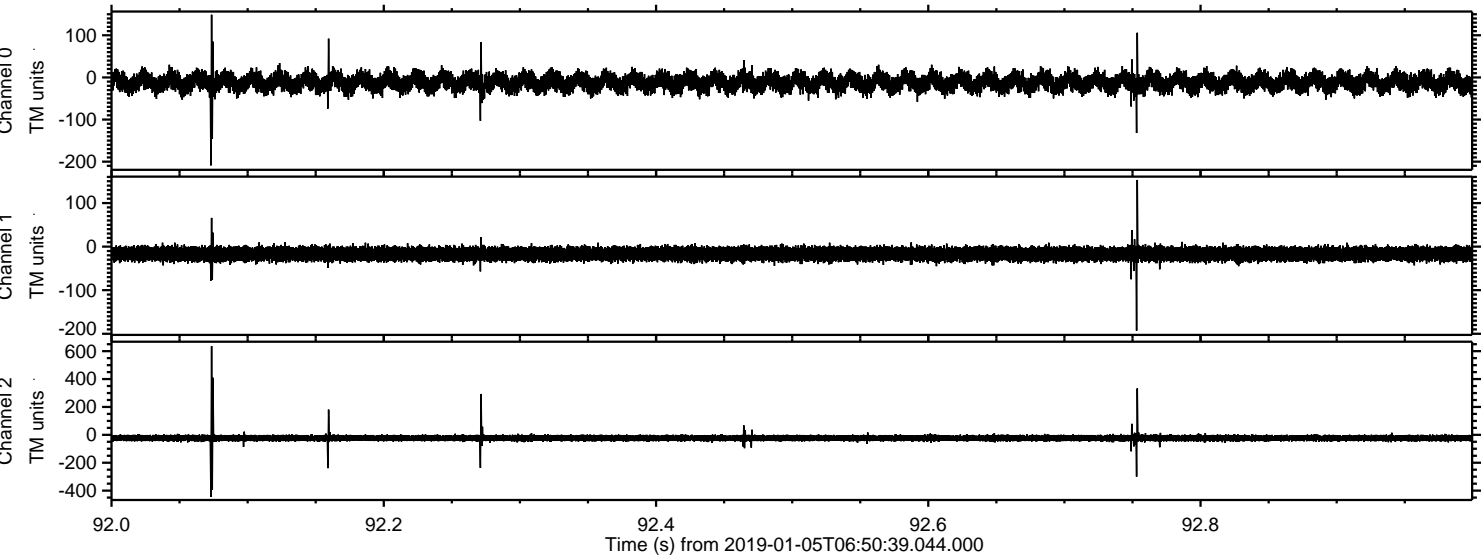
Processed Sat Jan 5 07:58:44 2019 by ELM ver.2012-10-06 from 001__elm20190105_065038__dat00.bin



Processed Sat Jan 5 07:58:45 2019 by ELM ver.2012-10-06 from 001__elm20190105_065038__dat00.bin



Processed Sat Jan 5 07:58:46 2019 by ELM ver.2012-10-06 from 001__elm20190105_065038__dat00.bin



Processed Sat Jan 5 07:58:46 2019 by ELM ver.2012-10-06 from 001__elm20190105_065038__dat00.bin

