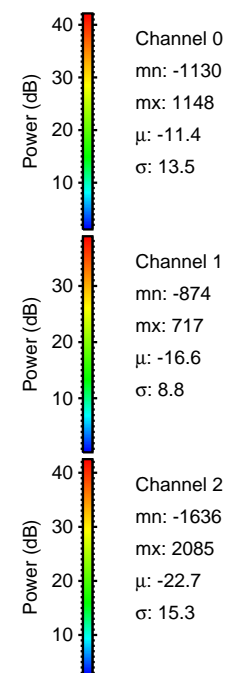
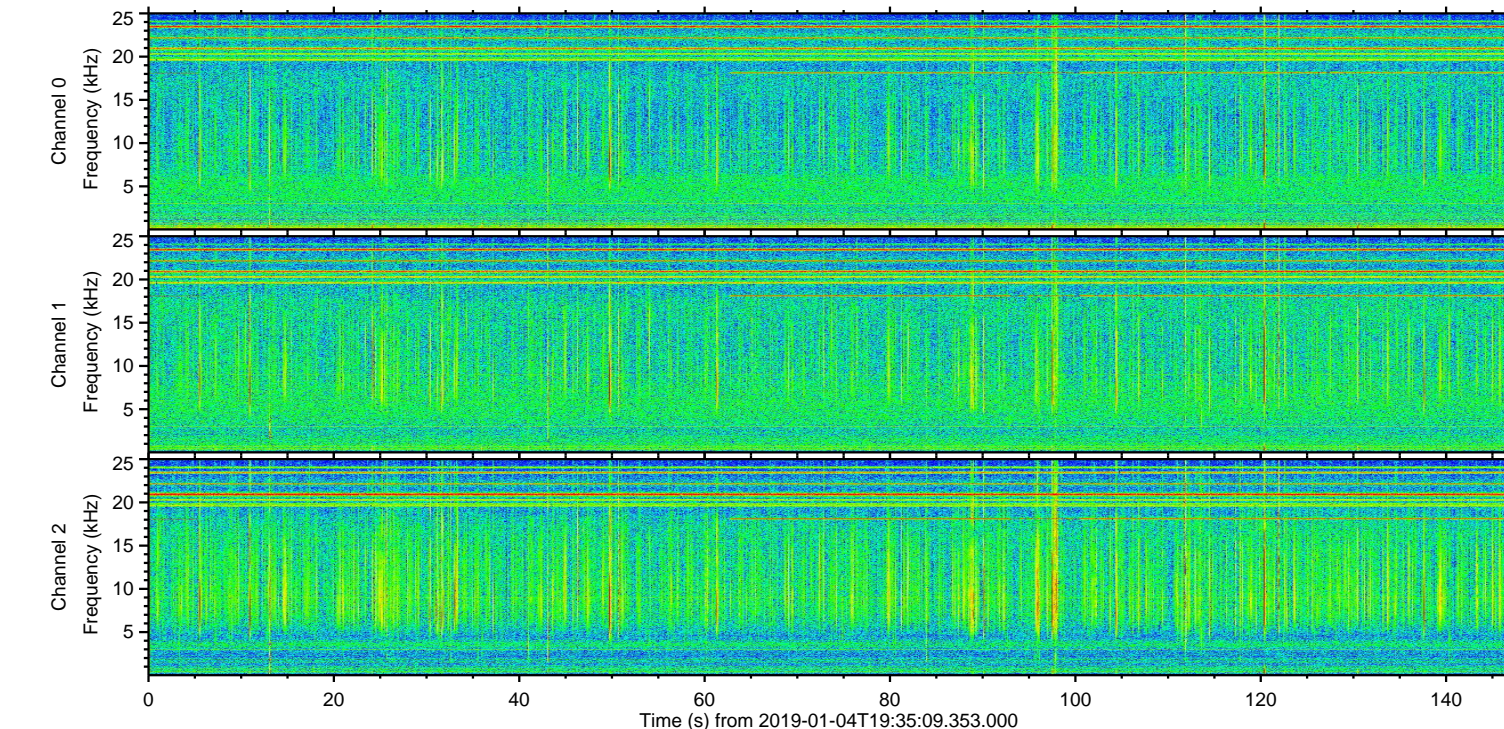
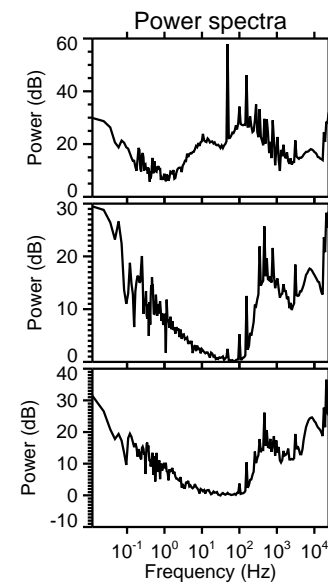
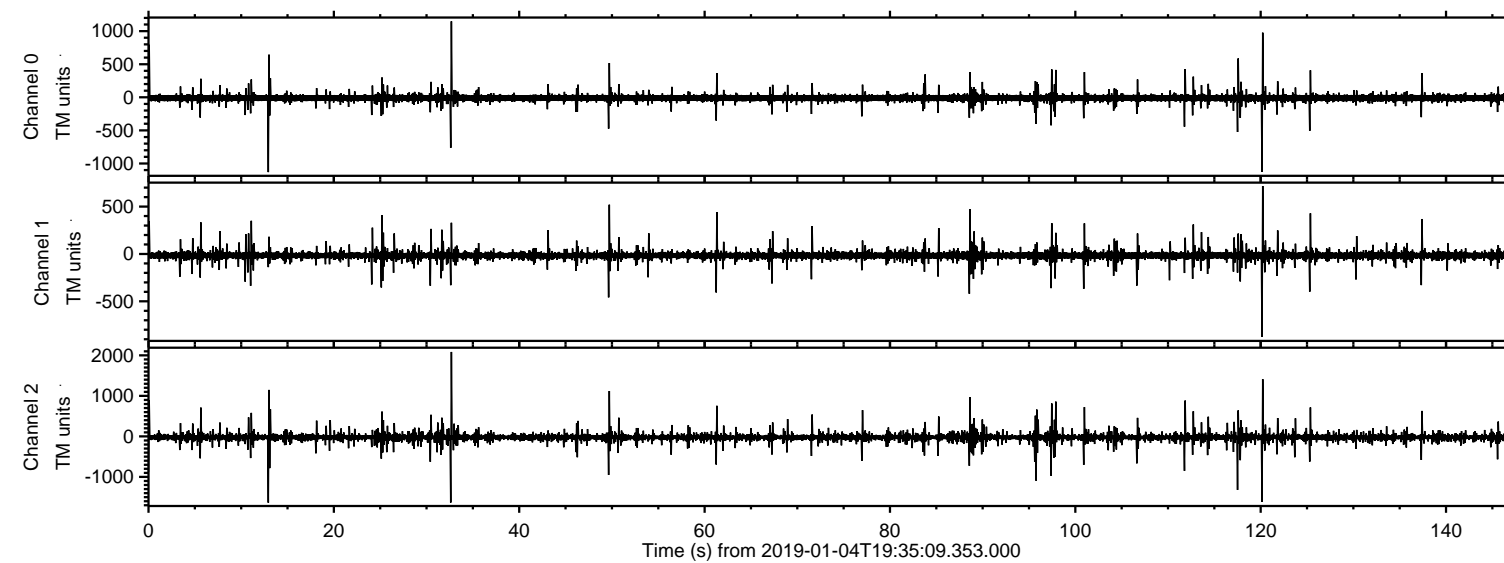


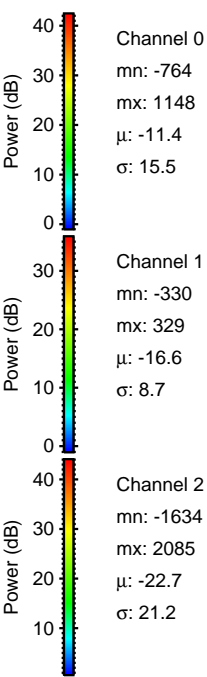
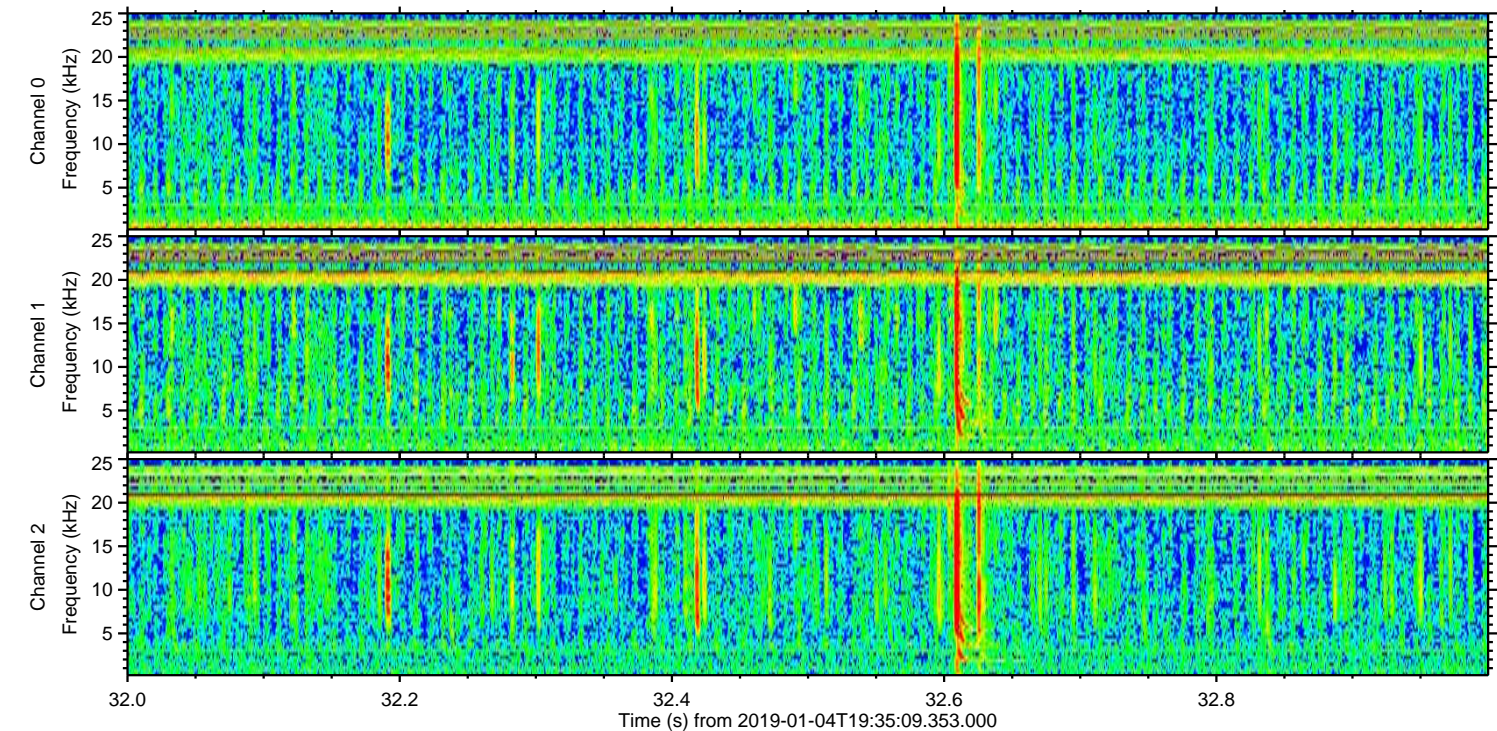
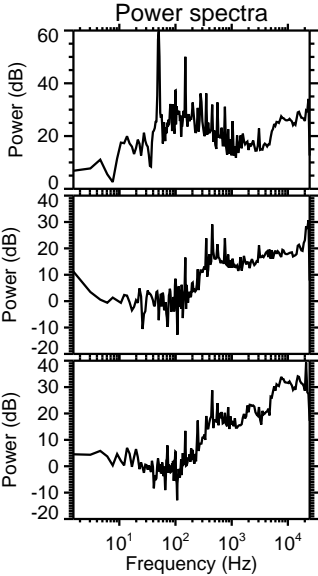
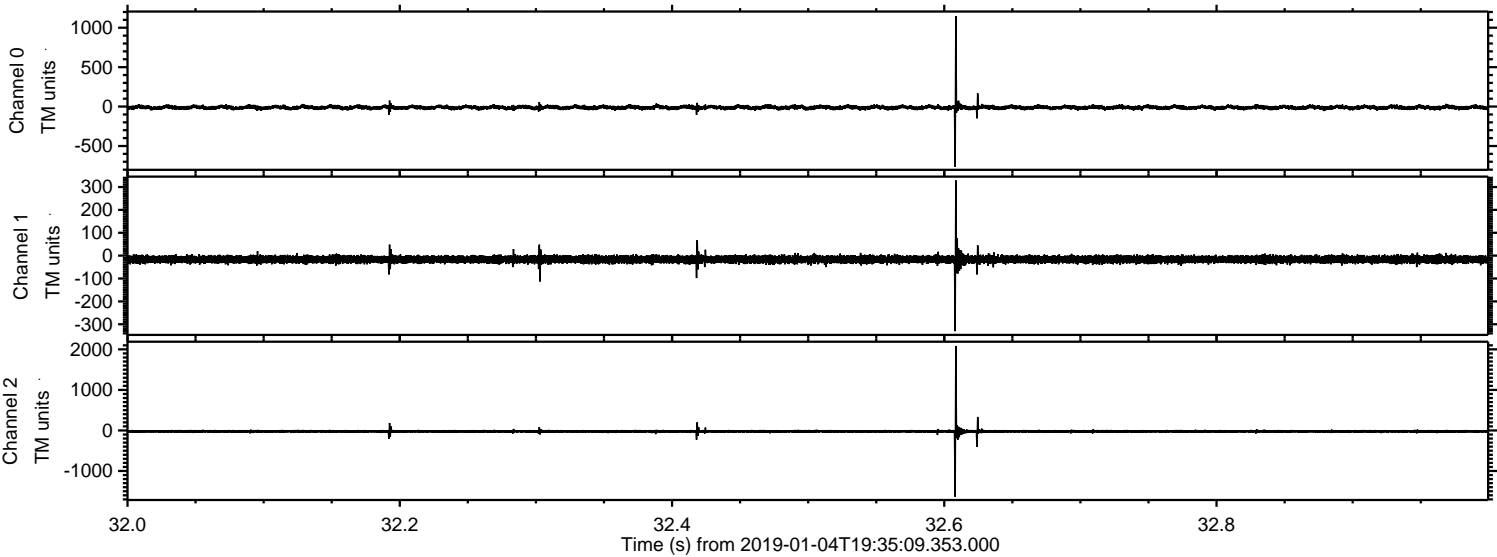
# ELMAVAN 3D WAVEFORMS (Measured data sampled at 50 kHz) 51000 packets of 144 samples from 2019-01-04T19:35:09.353.000.

Processed Fri Jan 4 20:42:57 2019 by ELM ver.2012-10-06 from 001\_\_elm20190104\_193508\_\_dat00.bin



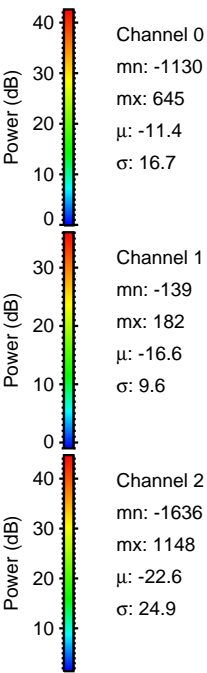
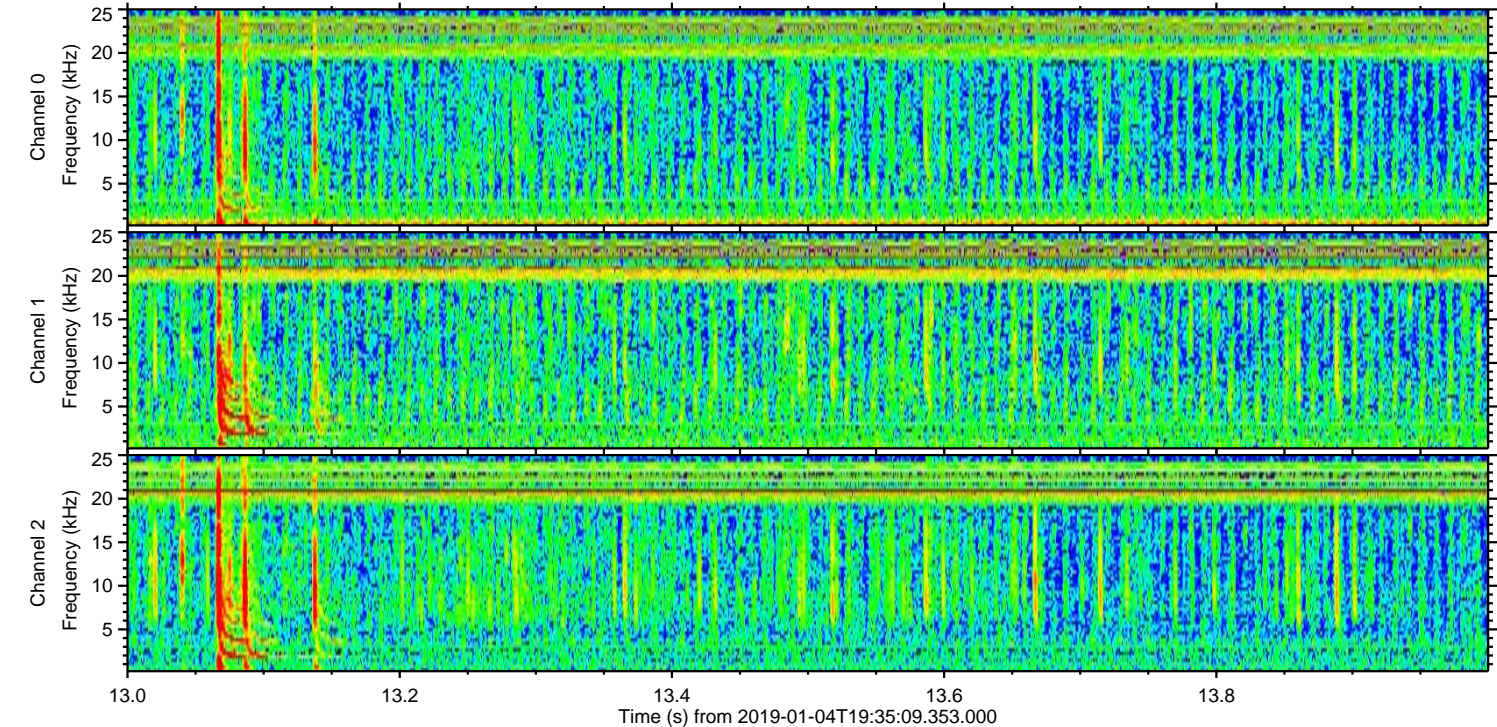
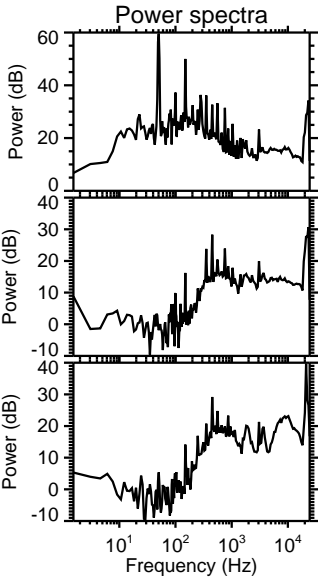
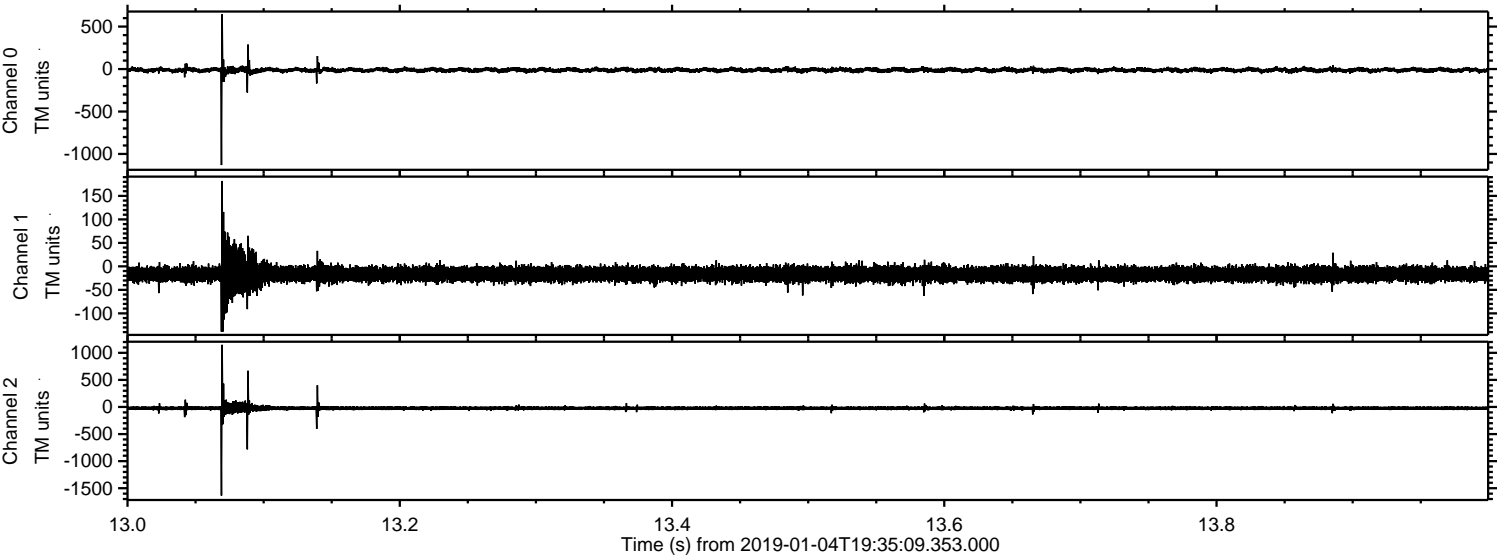


Processed Fri Jan 4 20:43:03 2019 by ELM ver.2012-10-06 from 001\_\_elm20190104\_193508\_\_dat00.bin





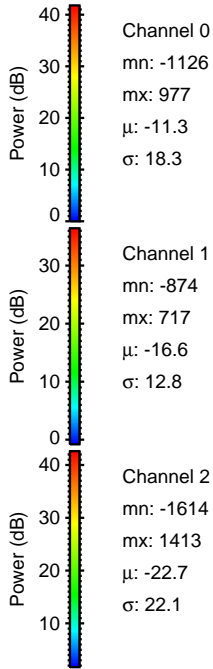
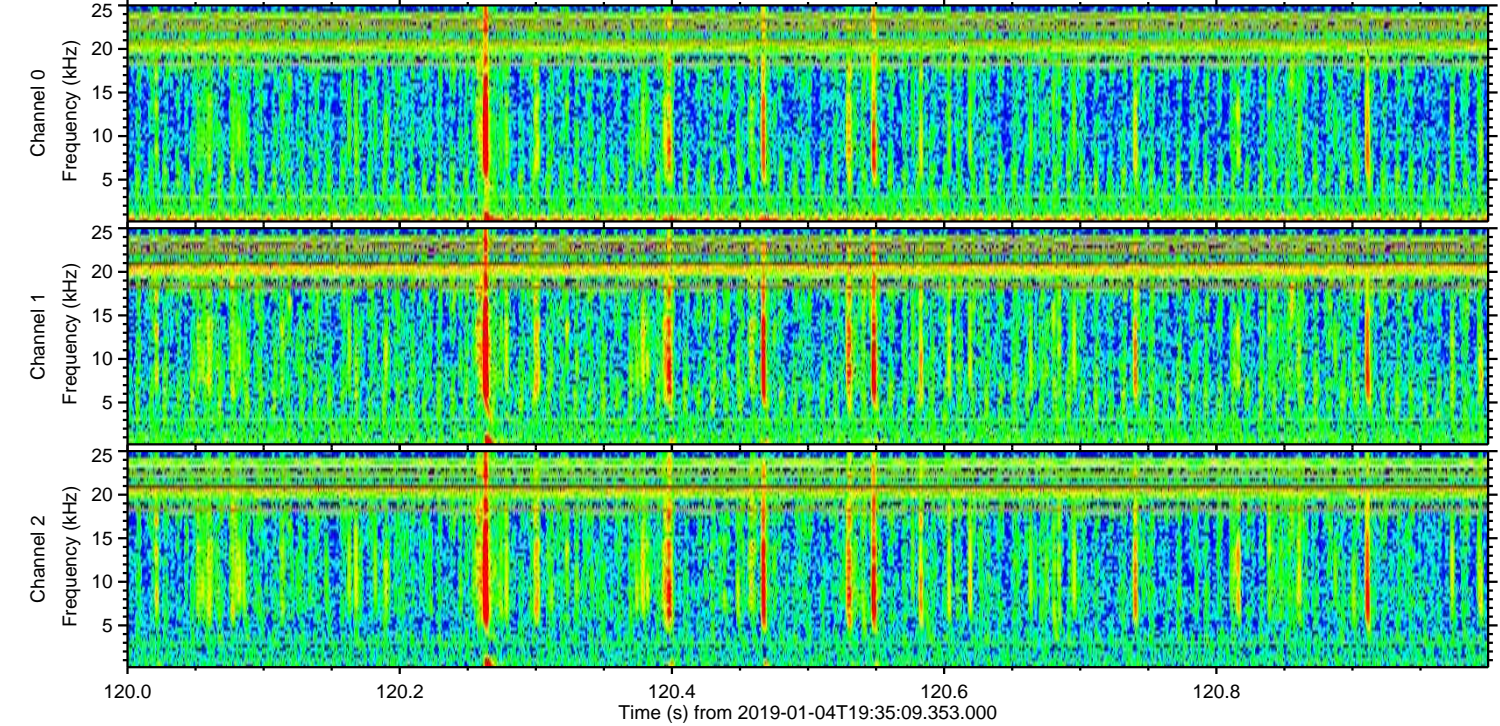
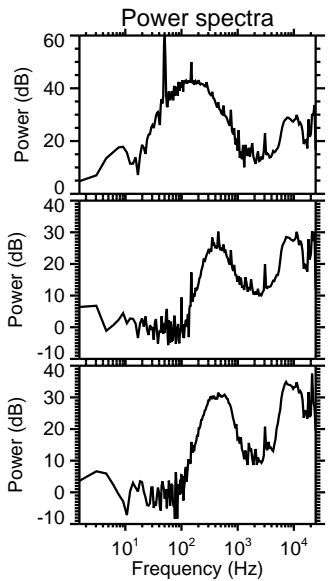
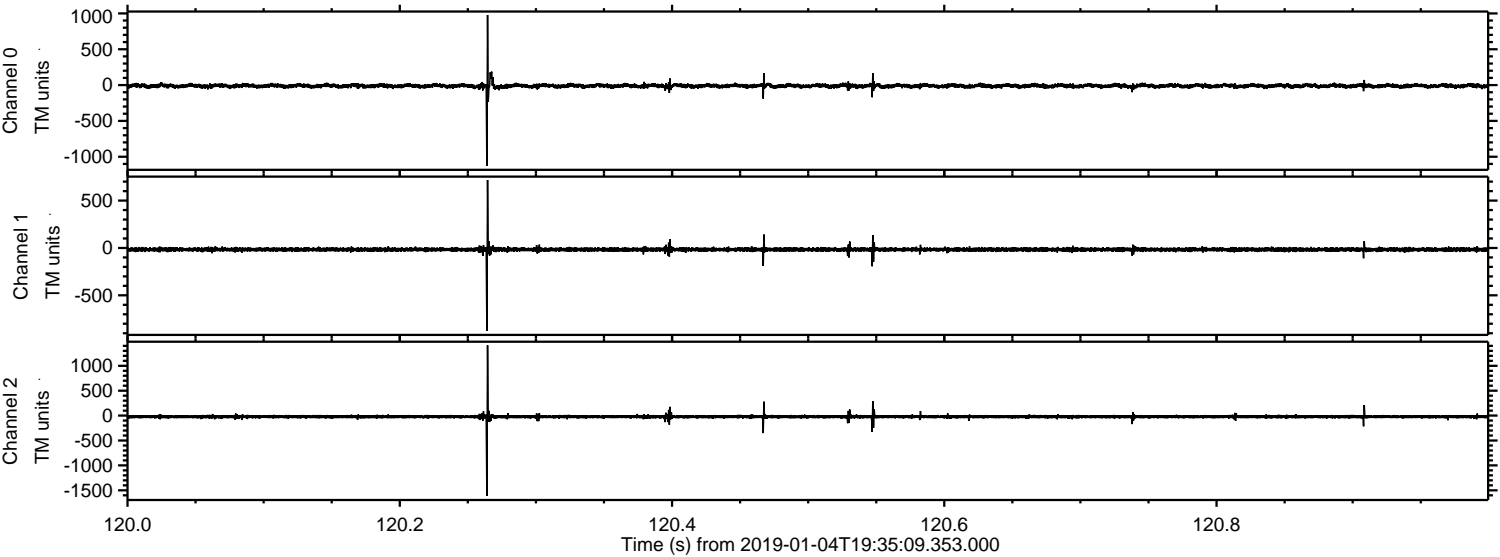
Processed Fri Jan 4 20:43:04 2019 by ELM ver.2012-10-06 from 001\_\_elm20190104\_193508\_\_dat00.bin





ELMAVAN 3D WAVEFORMS (Measured data sampled at 50 kHz) 51000 packets of 144 samples from 2019-01-04T19:35:09.353.000. Part 121/147

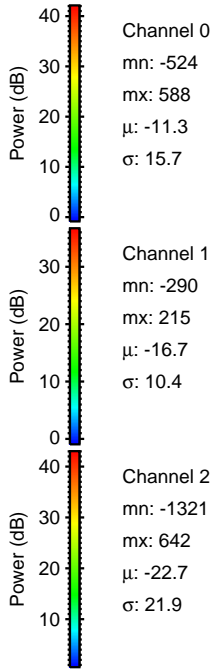
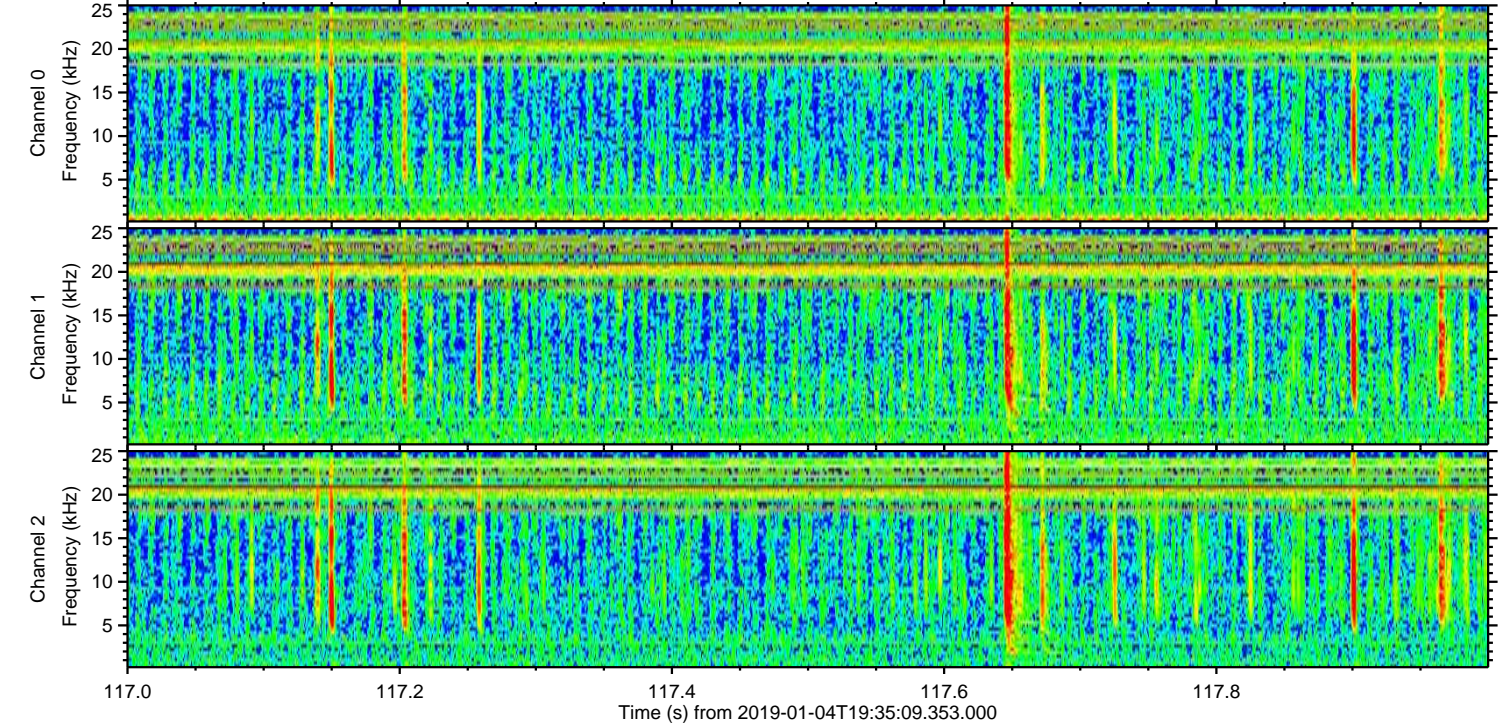
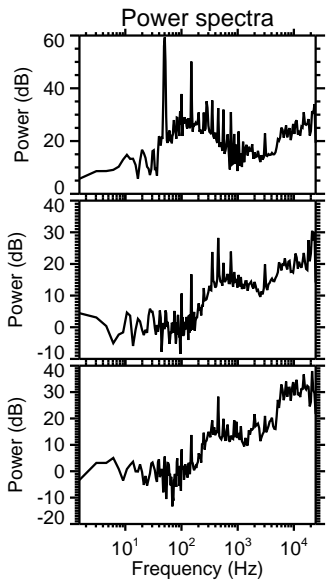
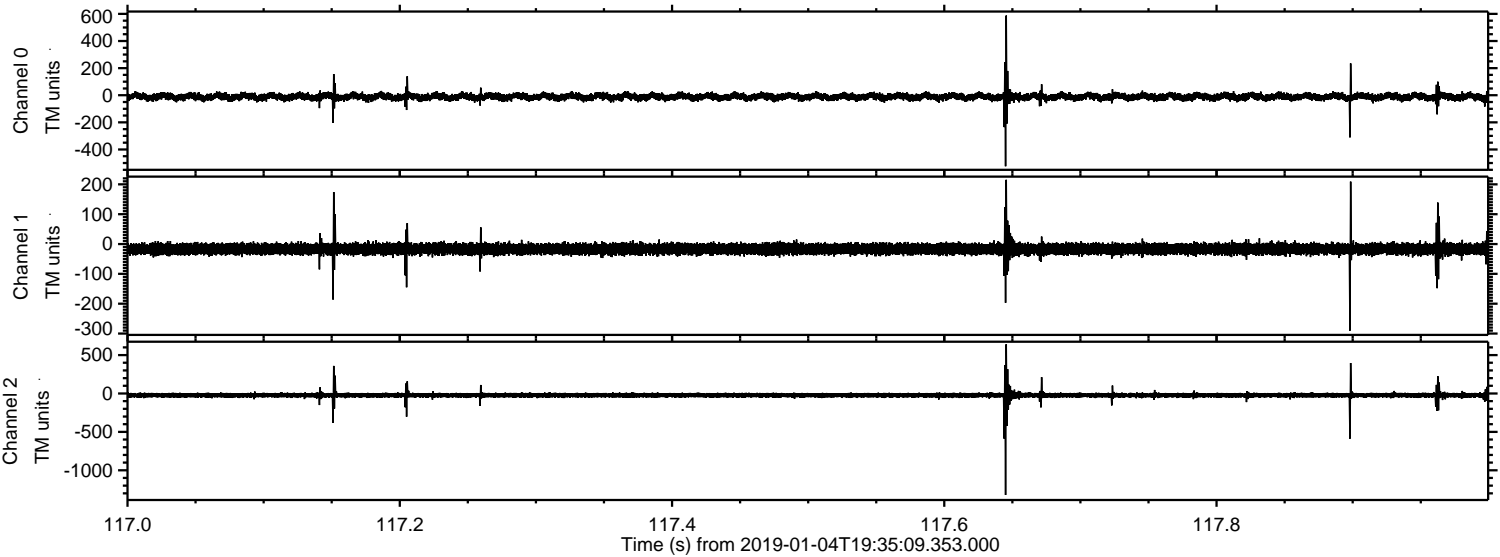
Processed Fri Jan 4 20:43:05 2019 by ELM ver.2012-10-06 from 001\_\_elm20190104\_193508\_\_dat00.bin





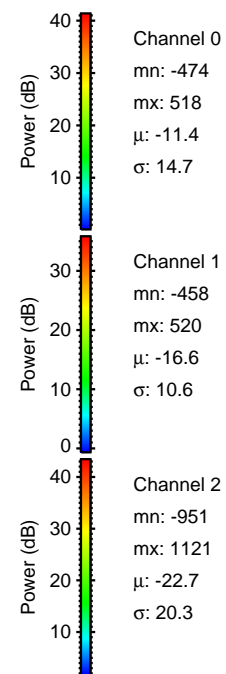
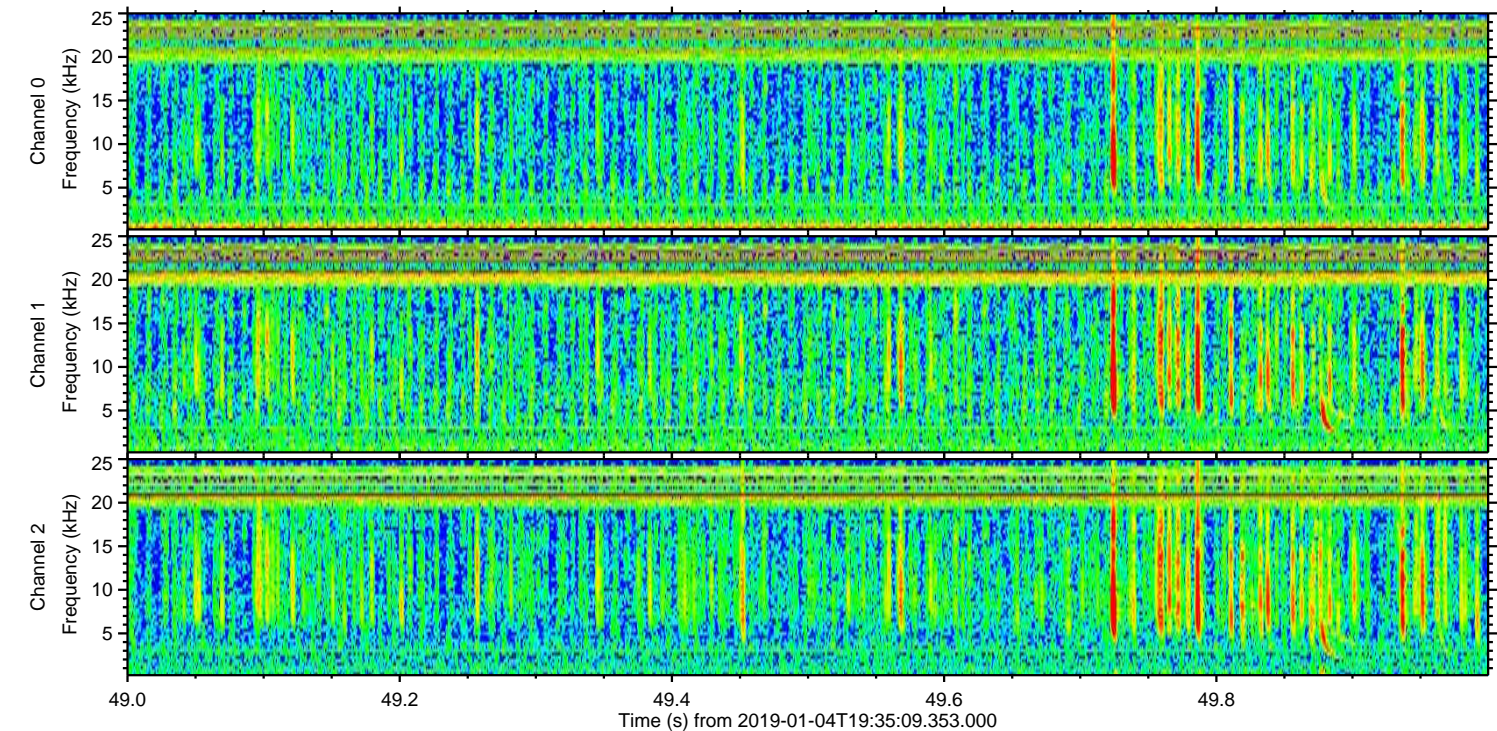
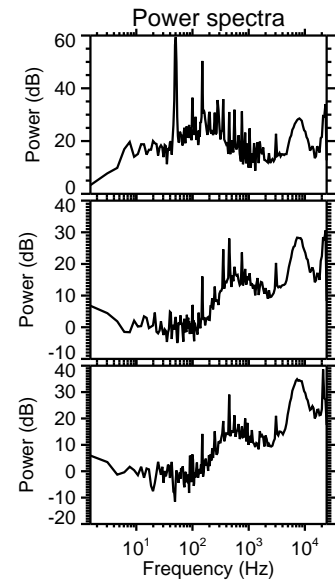
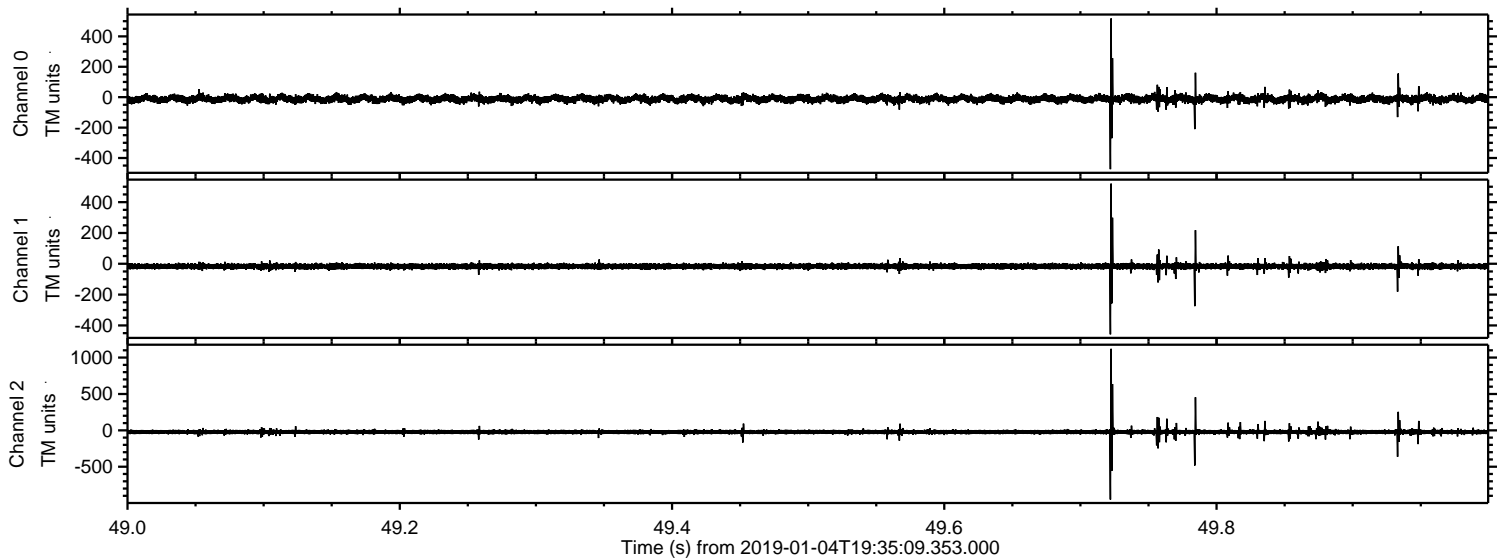
ELMAVAN 3D WAVEFORMS (Measured data sampled at 50 kHz) 51000 packets of 144 samples from 2019-01-04T19:35:09.353.000. Part 118/147

Processed Fri Jan 4 20:43:06 2019 by ELM ver.2012-10-06 from 001\_\_elm20190104\_193508\_\_dat00.bin



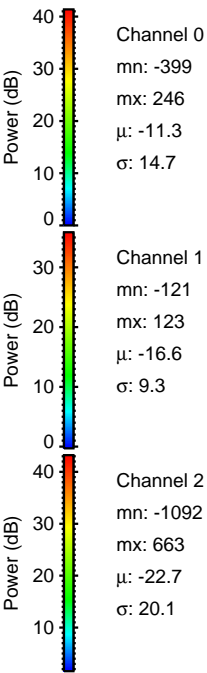
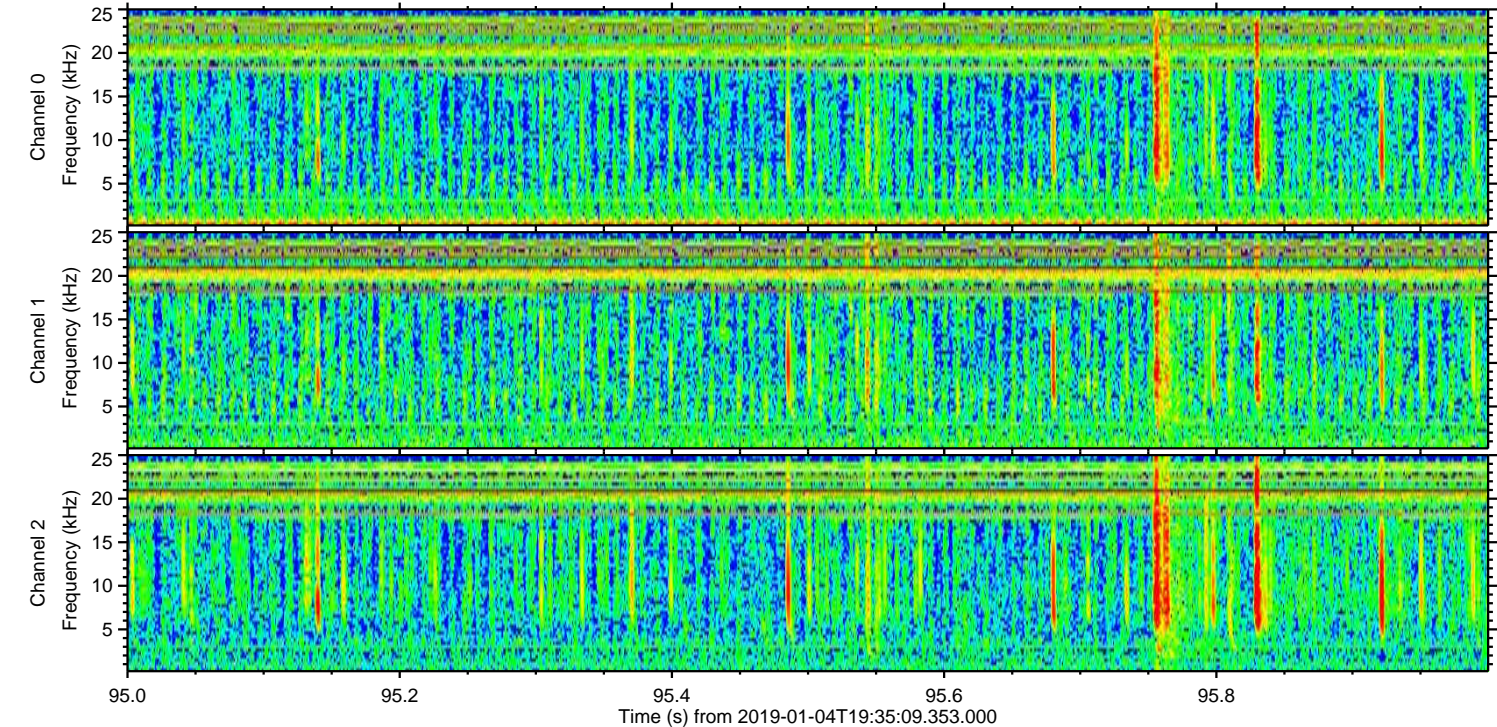
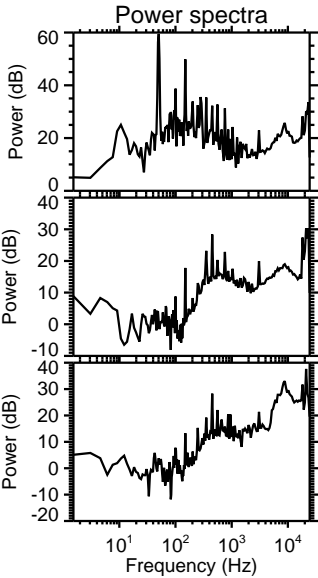
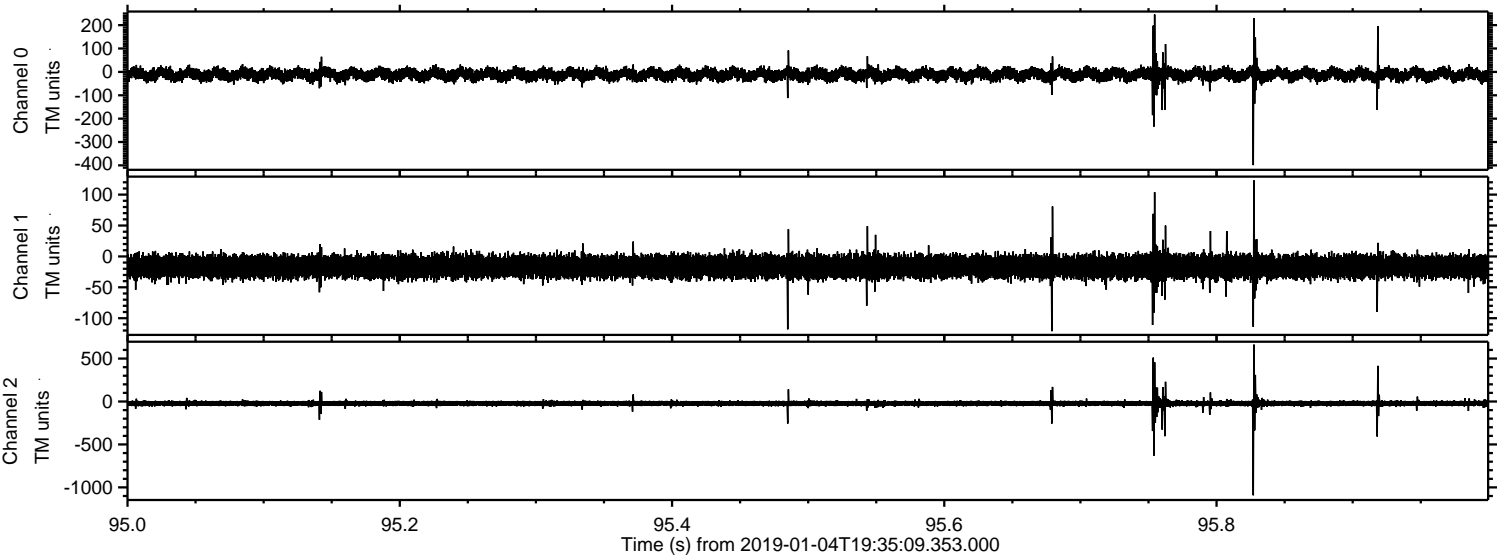


Processed Fri Jan 4 20:43:06 2019 by ELM ver.2012-10-06 from 001\_\_elm20190104\_193508\_\_dat00.bin



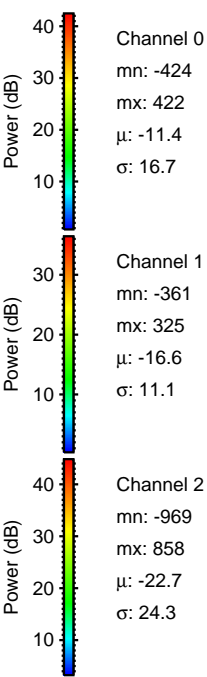
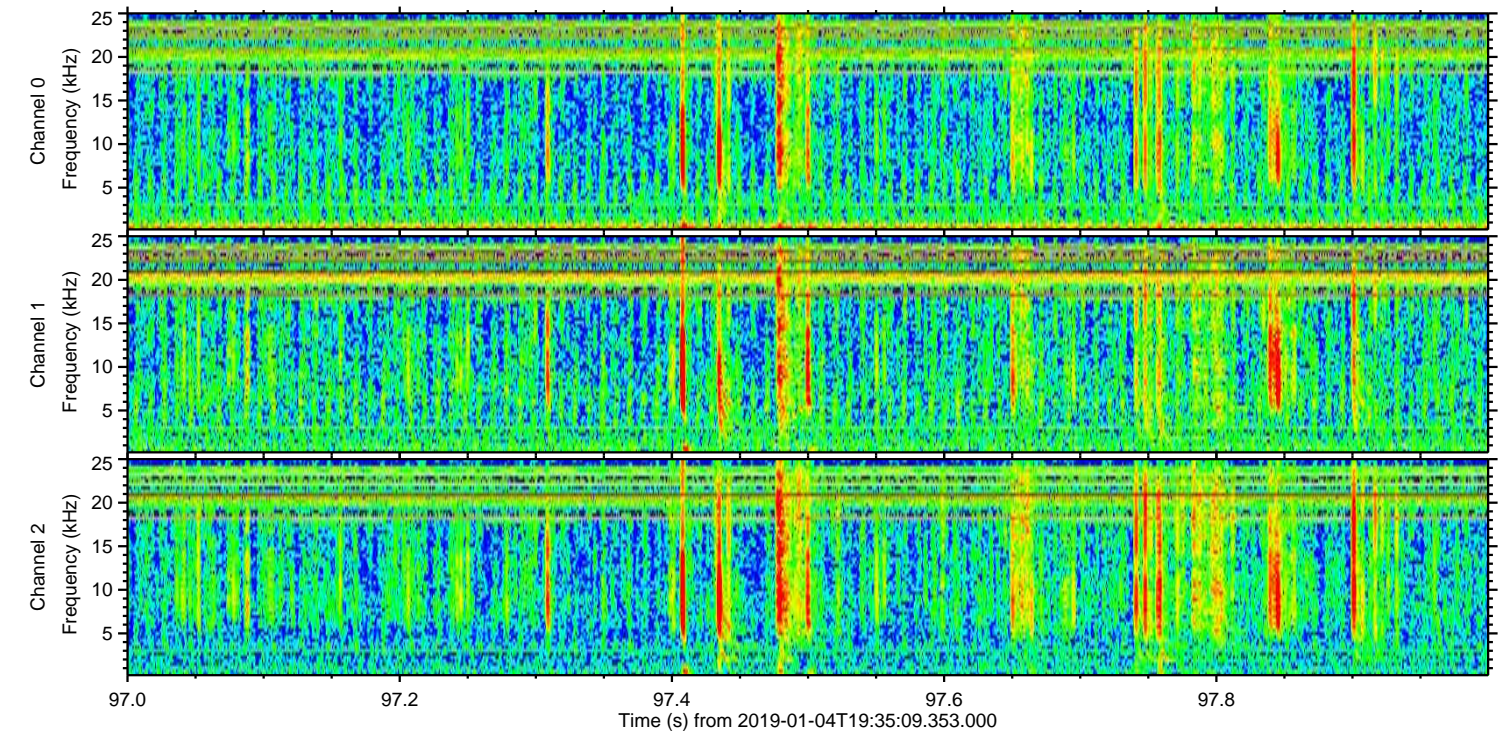
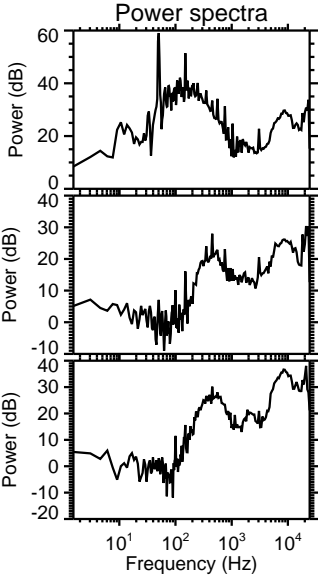
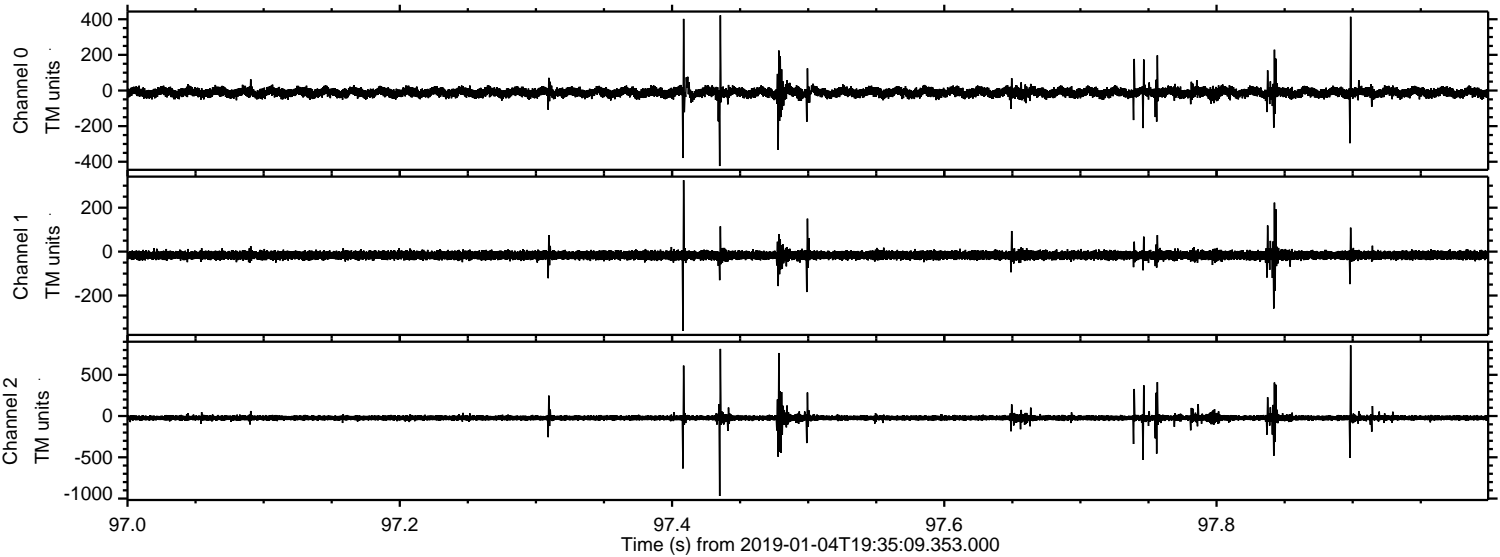


Processed Fri Jan 4 20:43:07 2019 by ELM ver.2012-10-06 from 001\_\_elm20190104\_193508\_\_dat00.bin



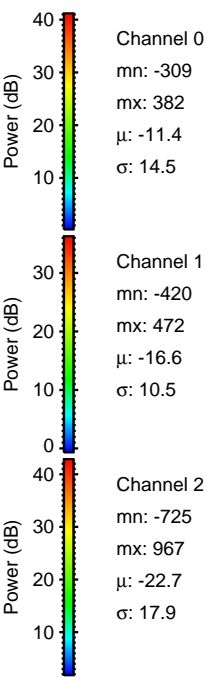
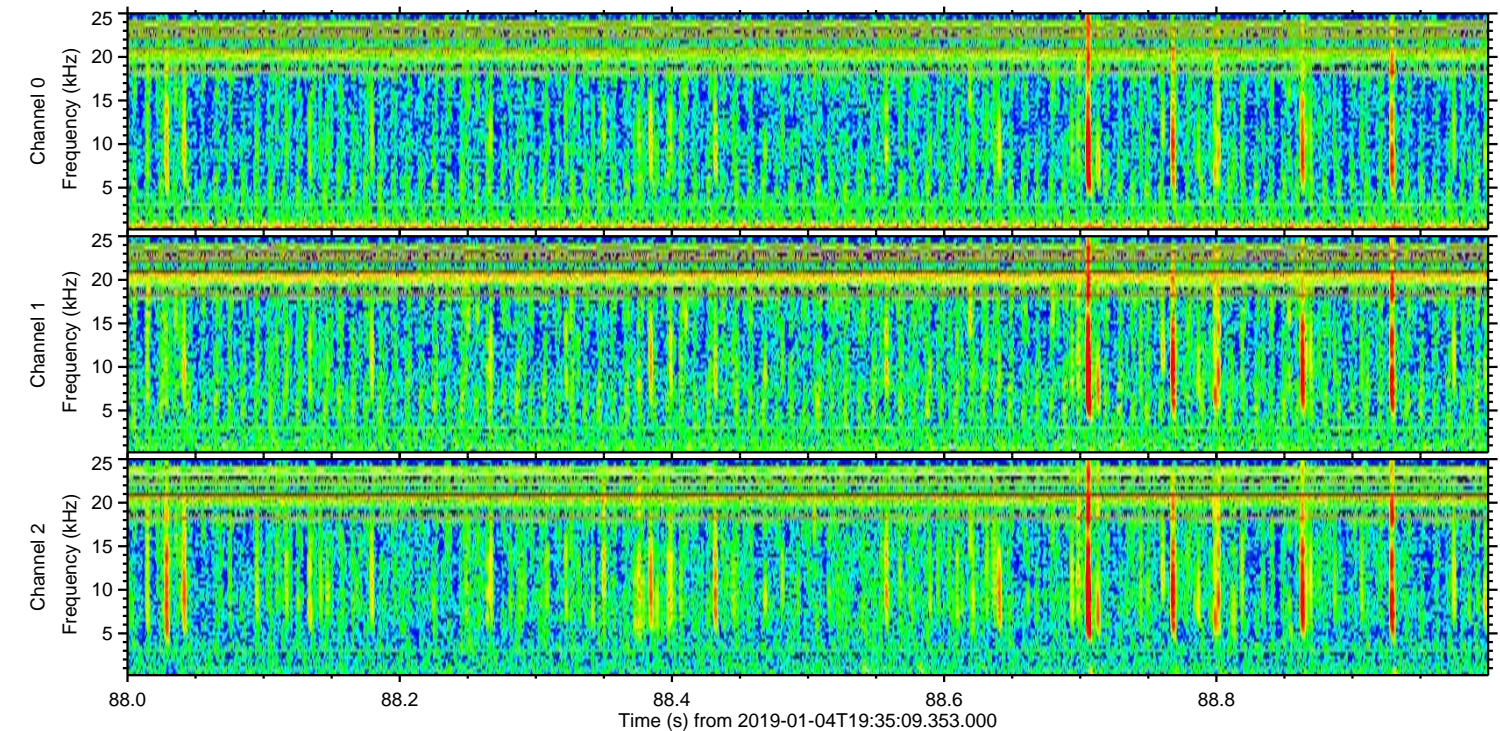
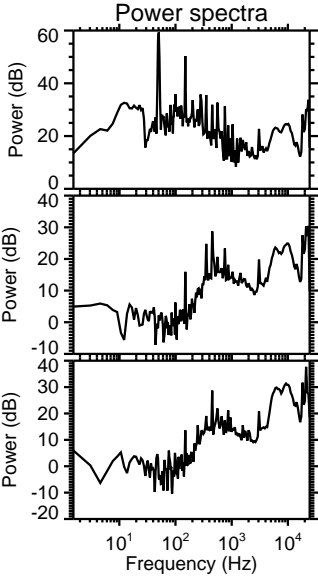
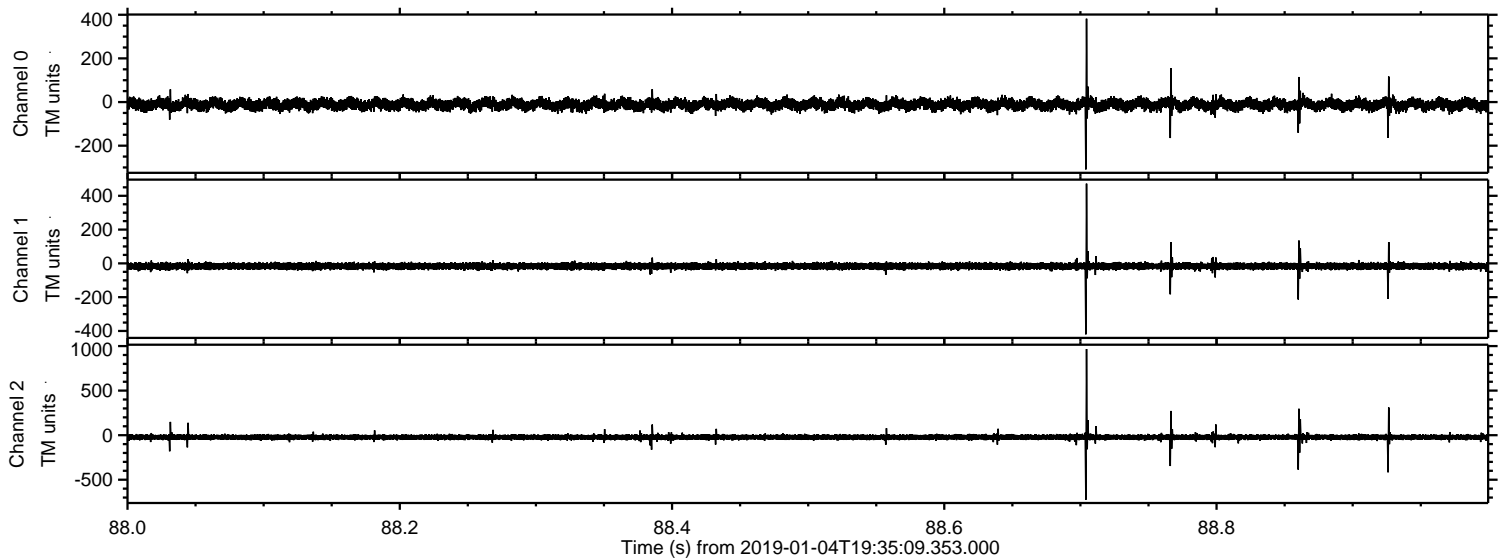


Processed Fri Jan 4 20:43:08 2019 by ELM ver.2012-10-06 from 001\_\_elm20190104\_193508\_\_dat00.bin





Processed Fri Jan 4 20:43:08 2019 by ELM ver.2012-10-06 from 001\_\_elm20190104\_193508\_\_dat00.bin





Processed Fri Jan 4 20:43:09 2019 by ELM ver.2012-10-06 from 001\_\_elm20190104\_193508\_\_dat00.bin

