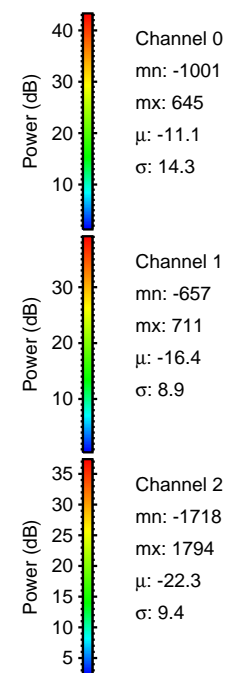
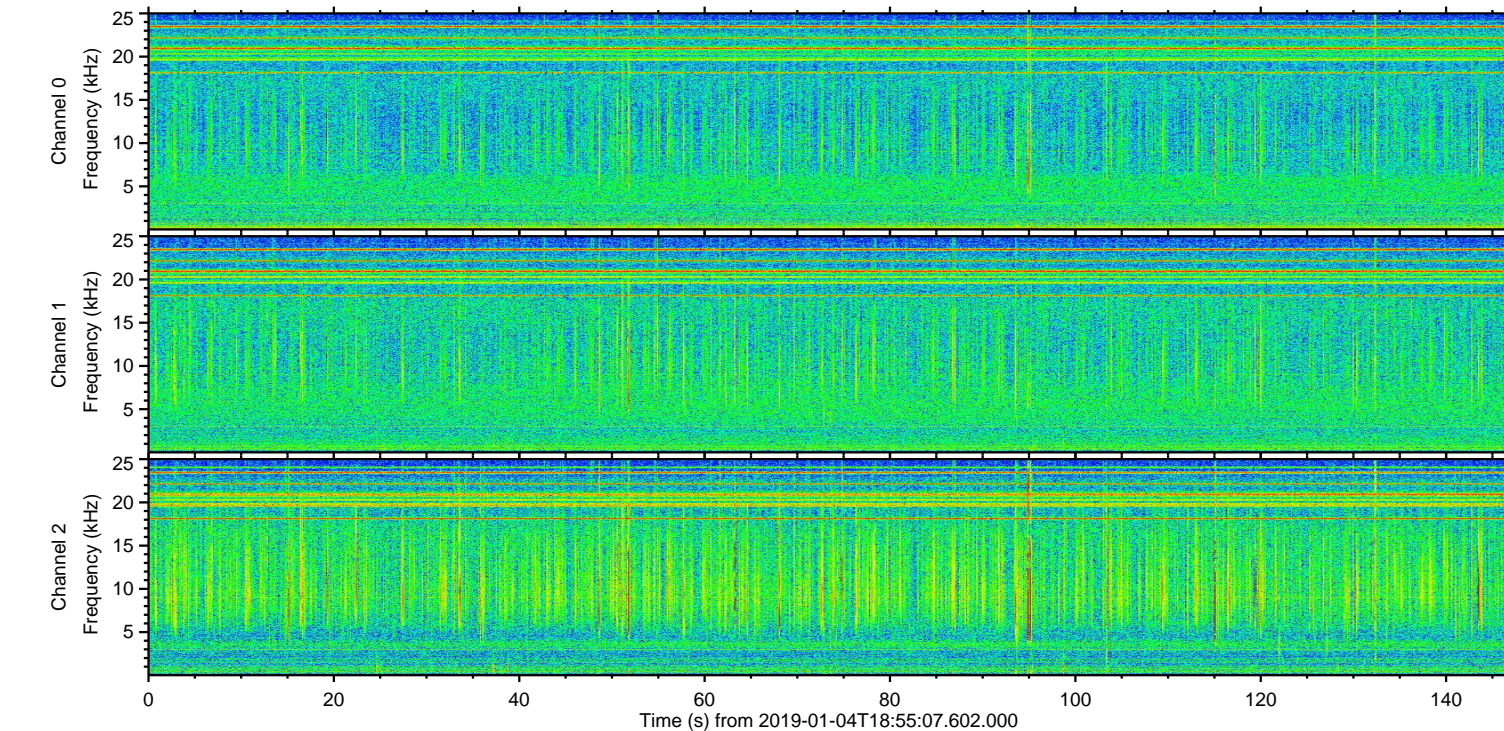
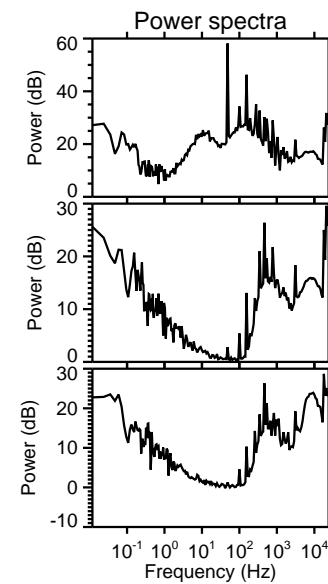
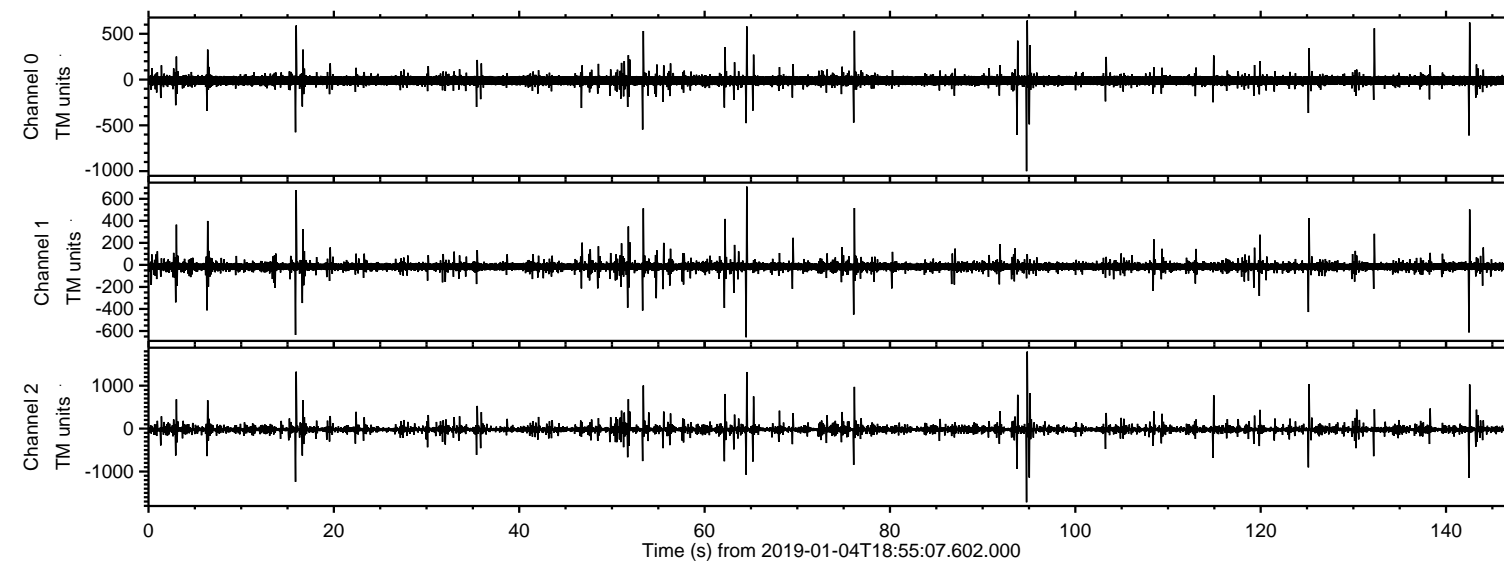
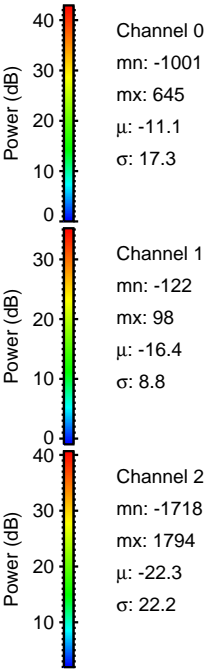
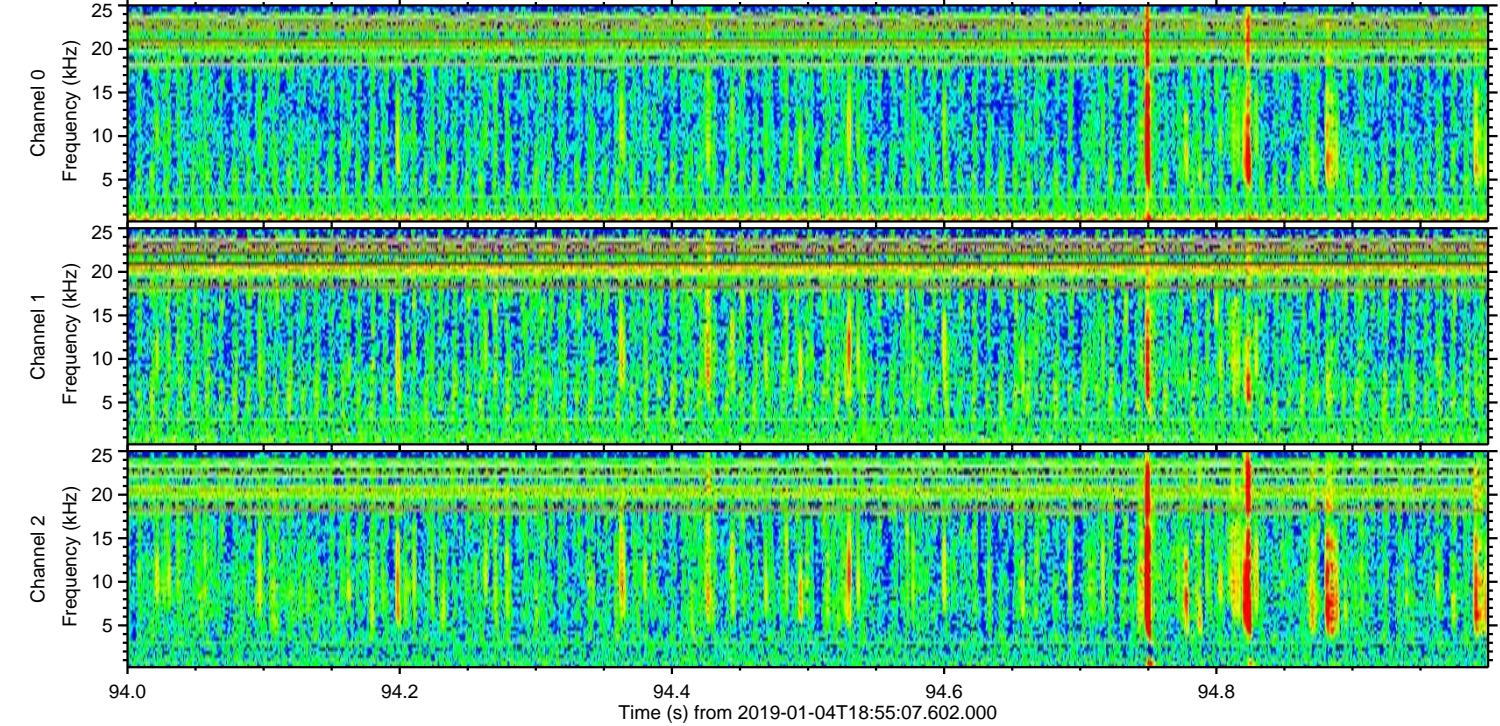
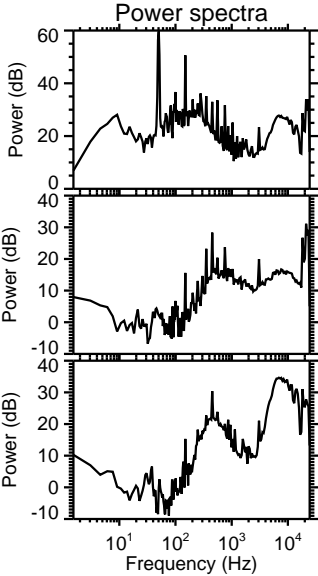
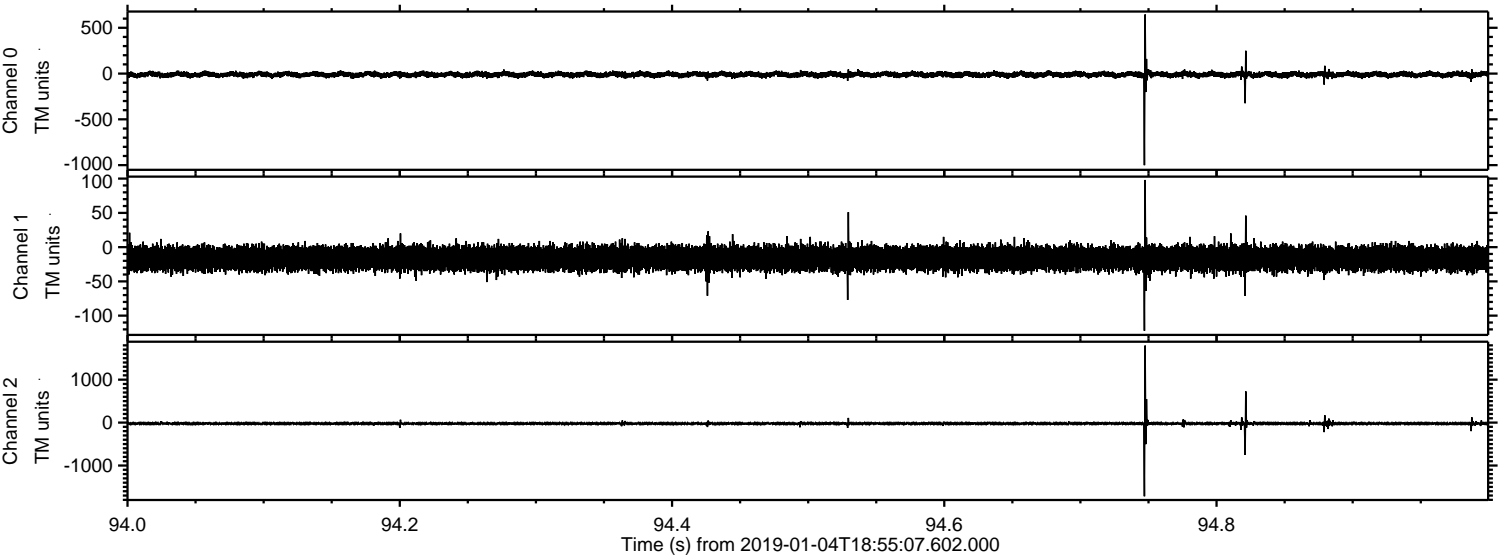


ELMAVAN 3D WAVEFORMS (Measured data sampled at 50 kHz) 51000 packets of 144 samples from 2019-01-04T18:55:07.602.000.

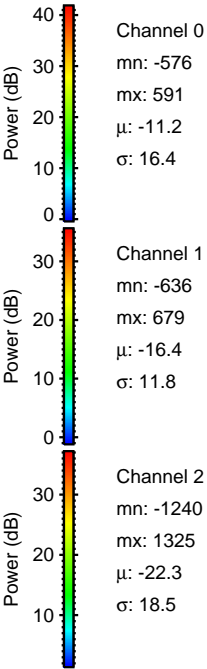
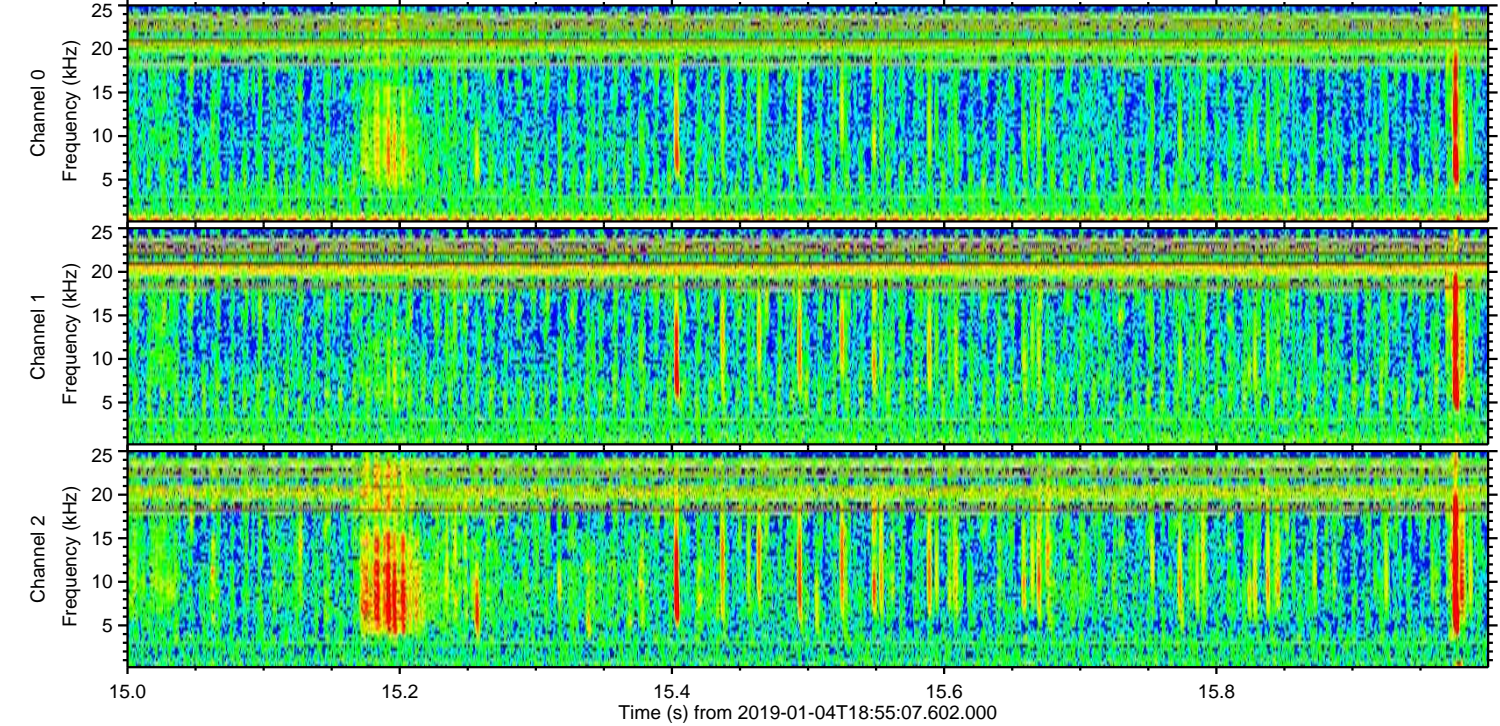
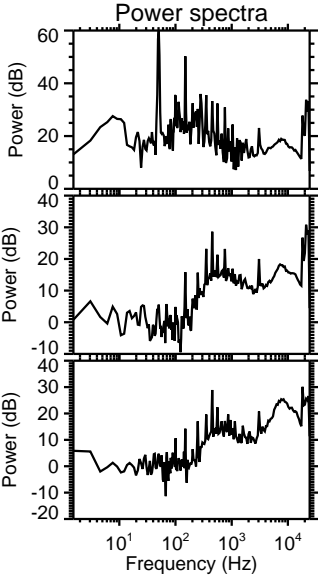
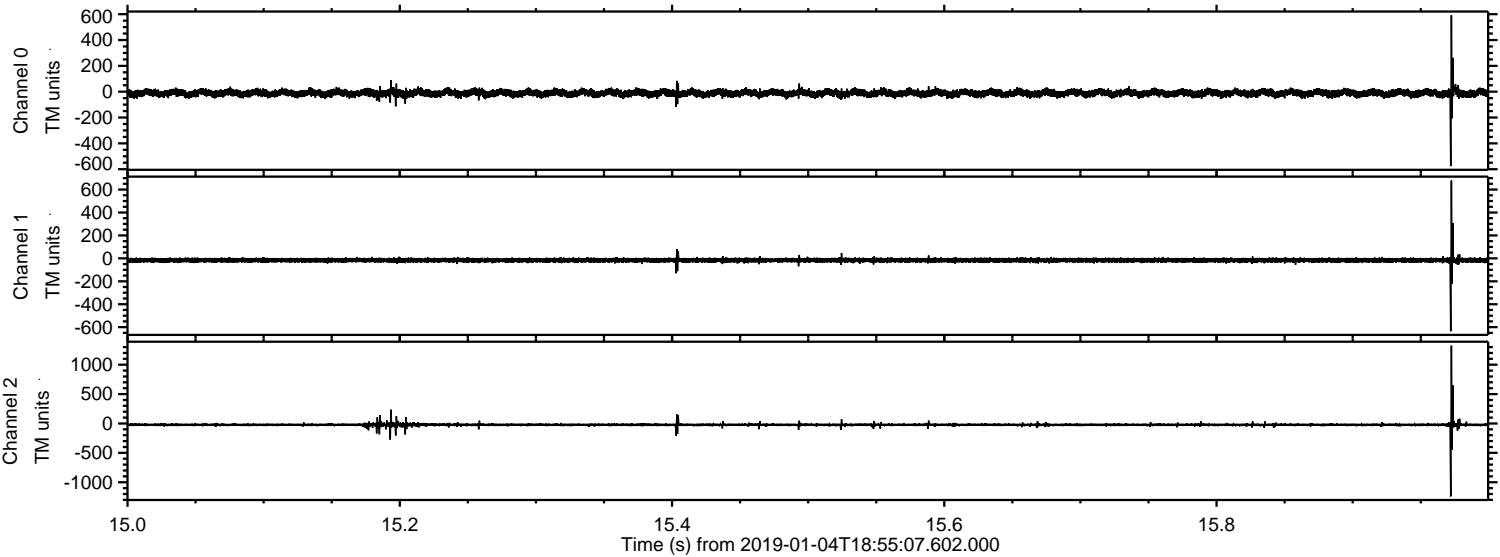
Processed Fri Jan 4 20:02:40 2019 by ELM ver.2012-10-06 from 001__elm20190104_185506__dat00.bin



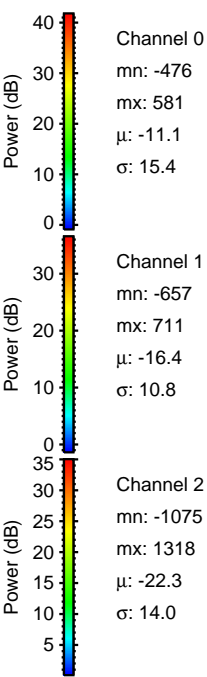
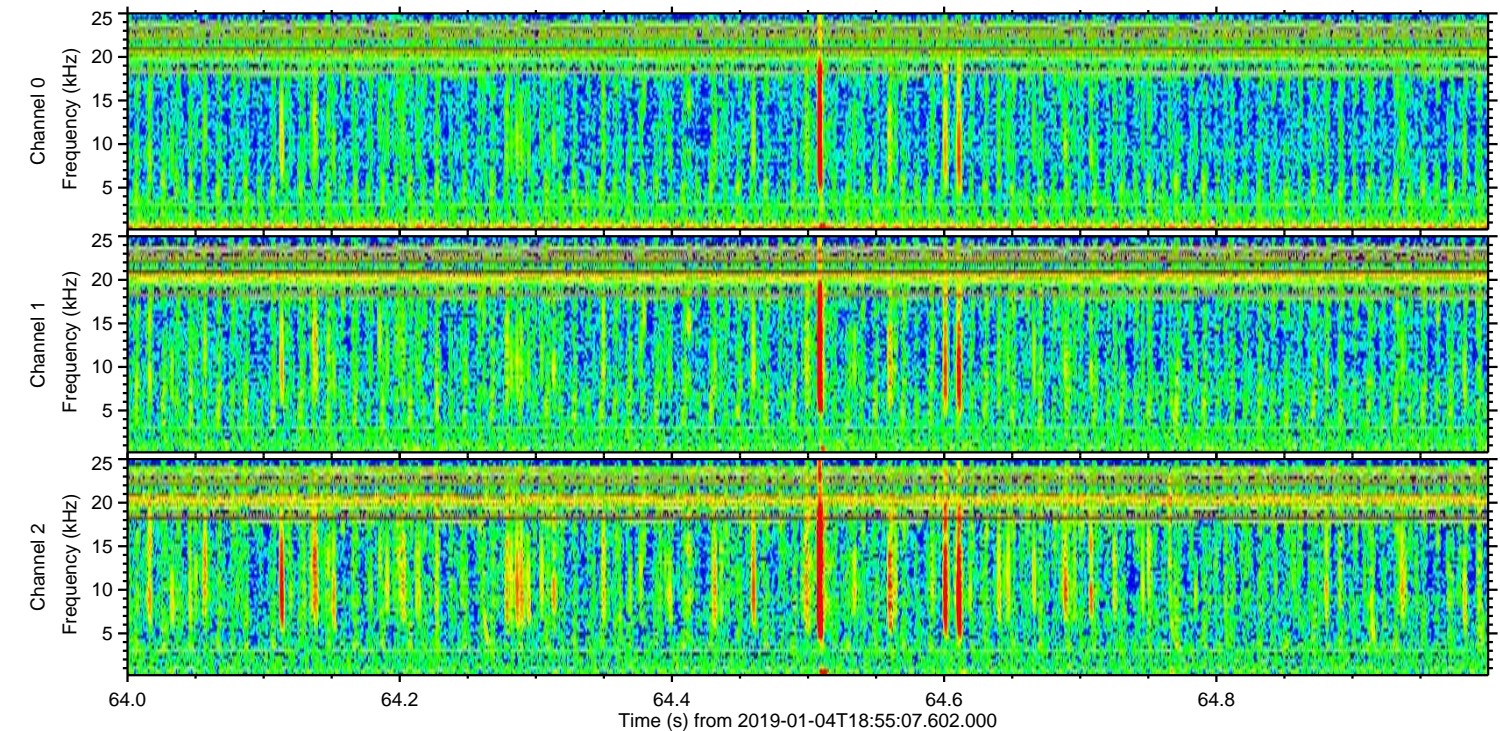
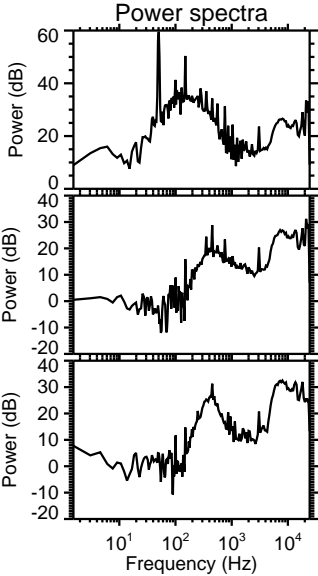
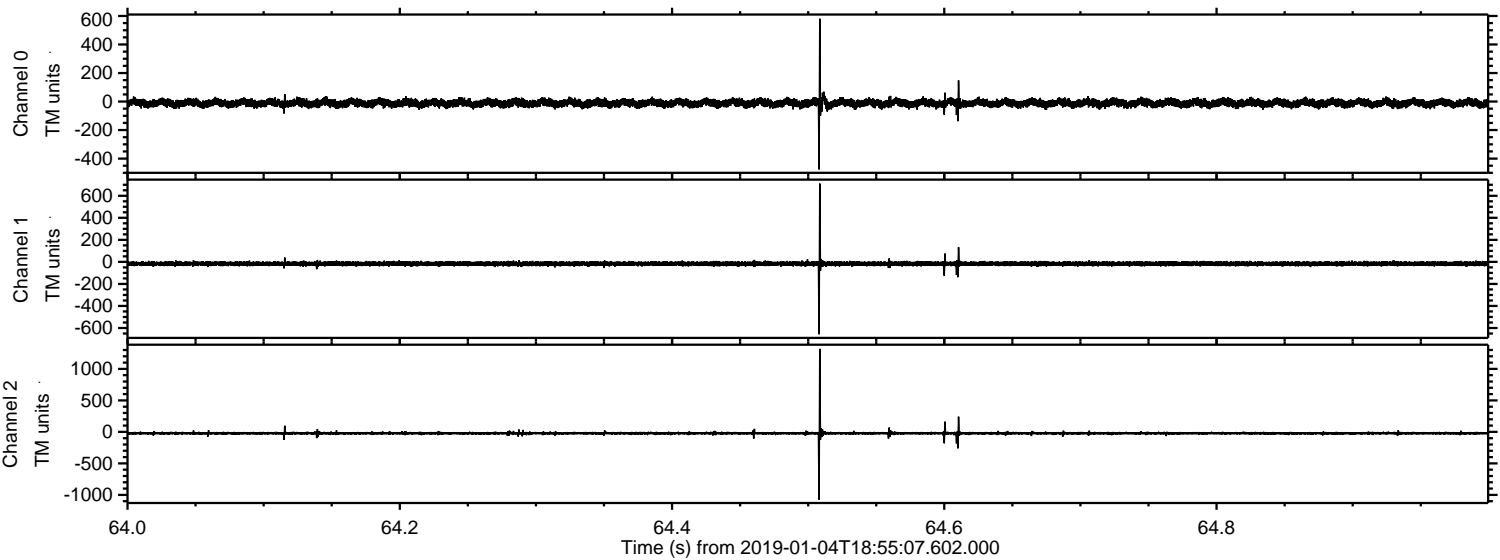
Processed Fri Jan 4 20:02:47 2019 by ELM ver.2012-10-06 from 001__elm20190104_185506__dat00.bin



Processed Fri Jan 4 20:02:47 2019 by ELM ver.2012-10-06 from 001_elm20190104_185506__dat00.bin

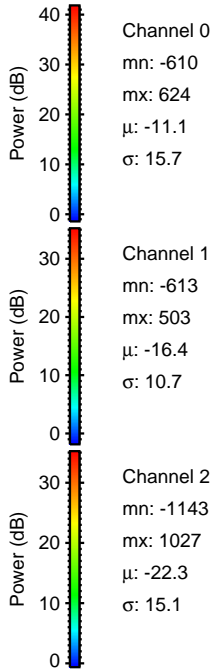
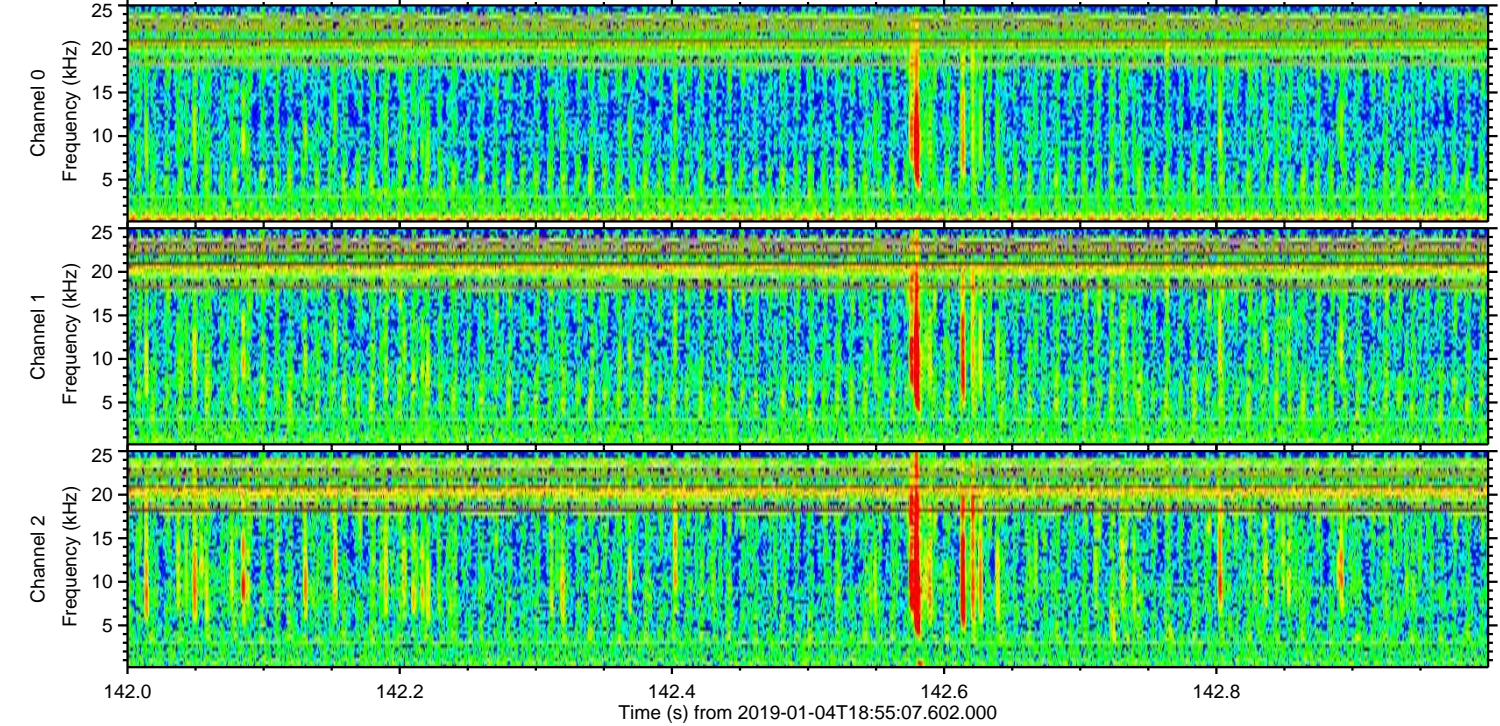
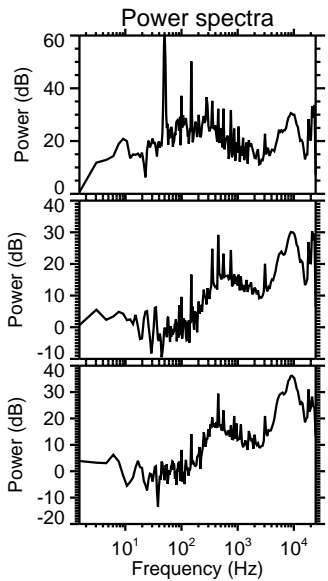
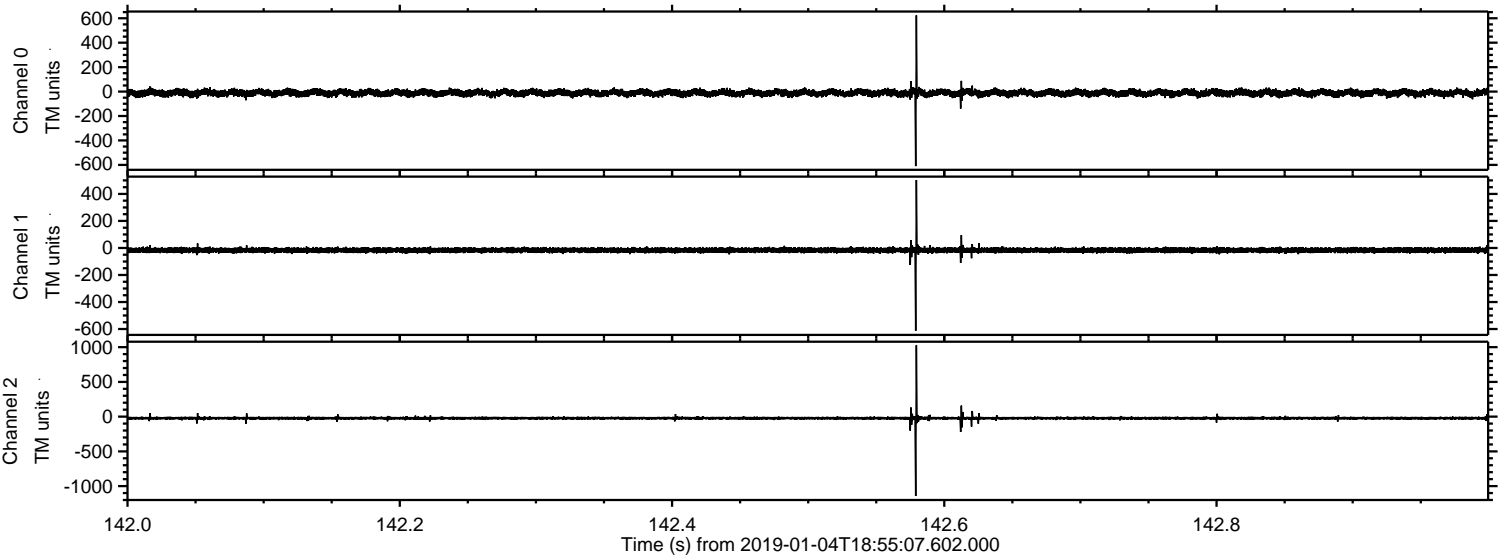


Processed Fri Jan 4 20:02:48 2019 by ELM ver.2012-10-06 from 001__elm20190104_185506__dat00.bin

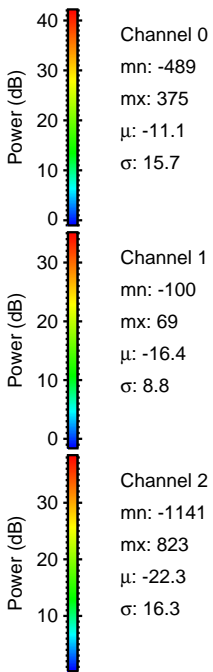
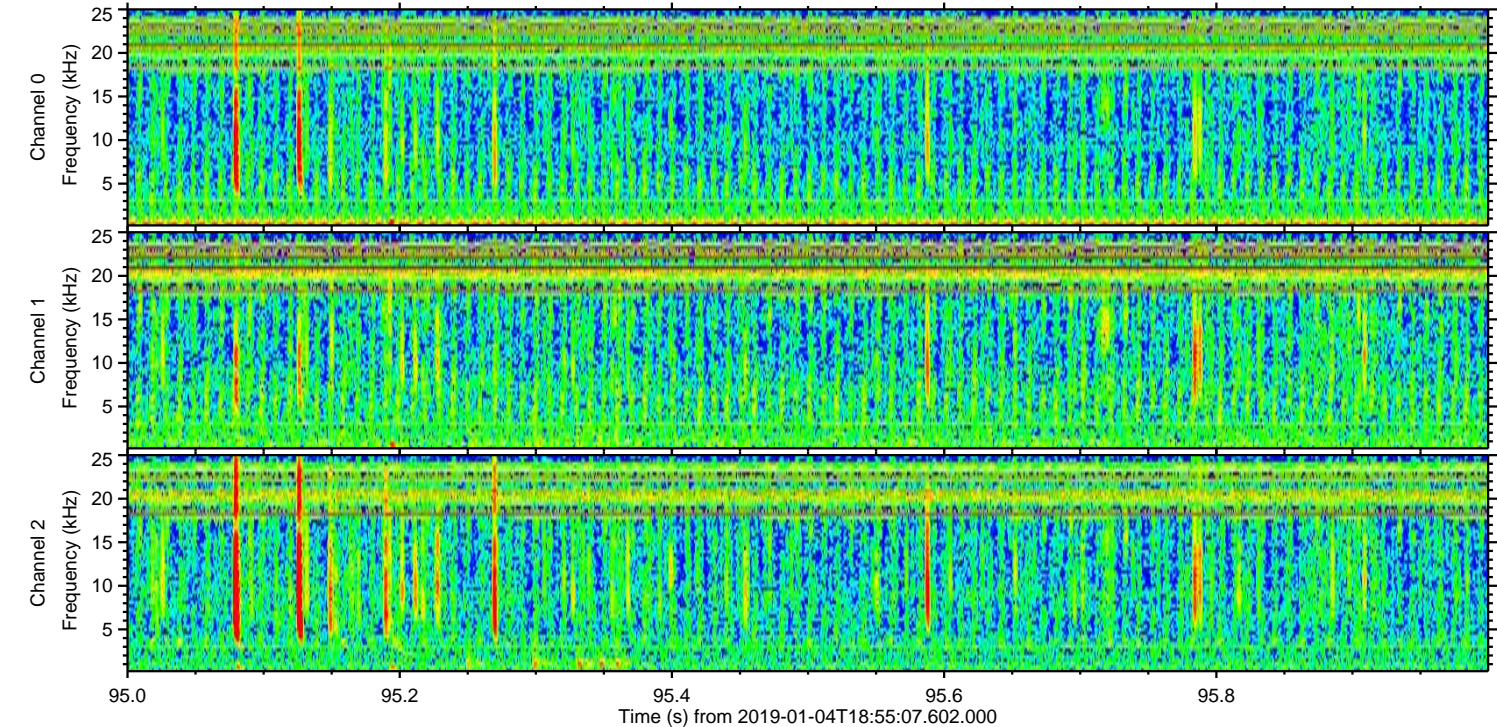
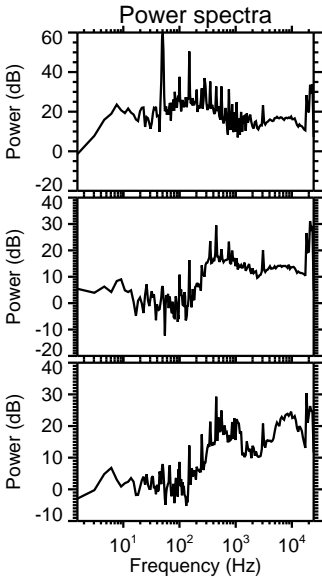
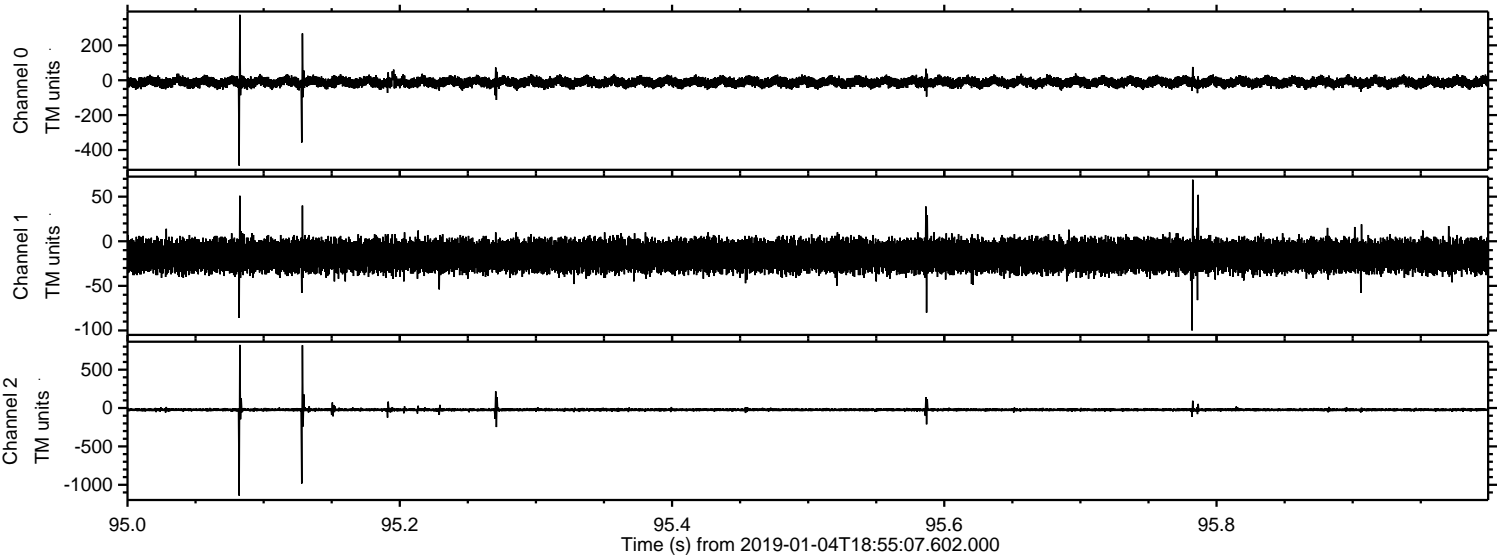


ELMAVAN 3D WAVEFORMS (Measured data sampled at 50 kHz) 51000 packets of 144 samples from 2019-01-04T18:55:07.602.000. Part 143/147

Processed Fri Jan 4 20:02:49 2019 by ELM ver.2012-10-06 from 001__elm20190104_185506__dat00.bin

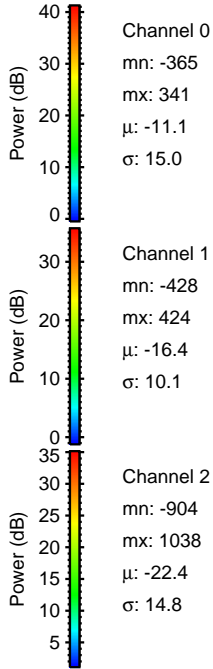
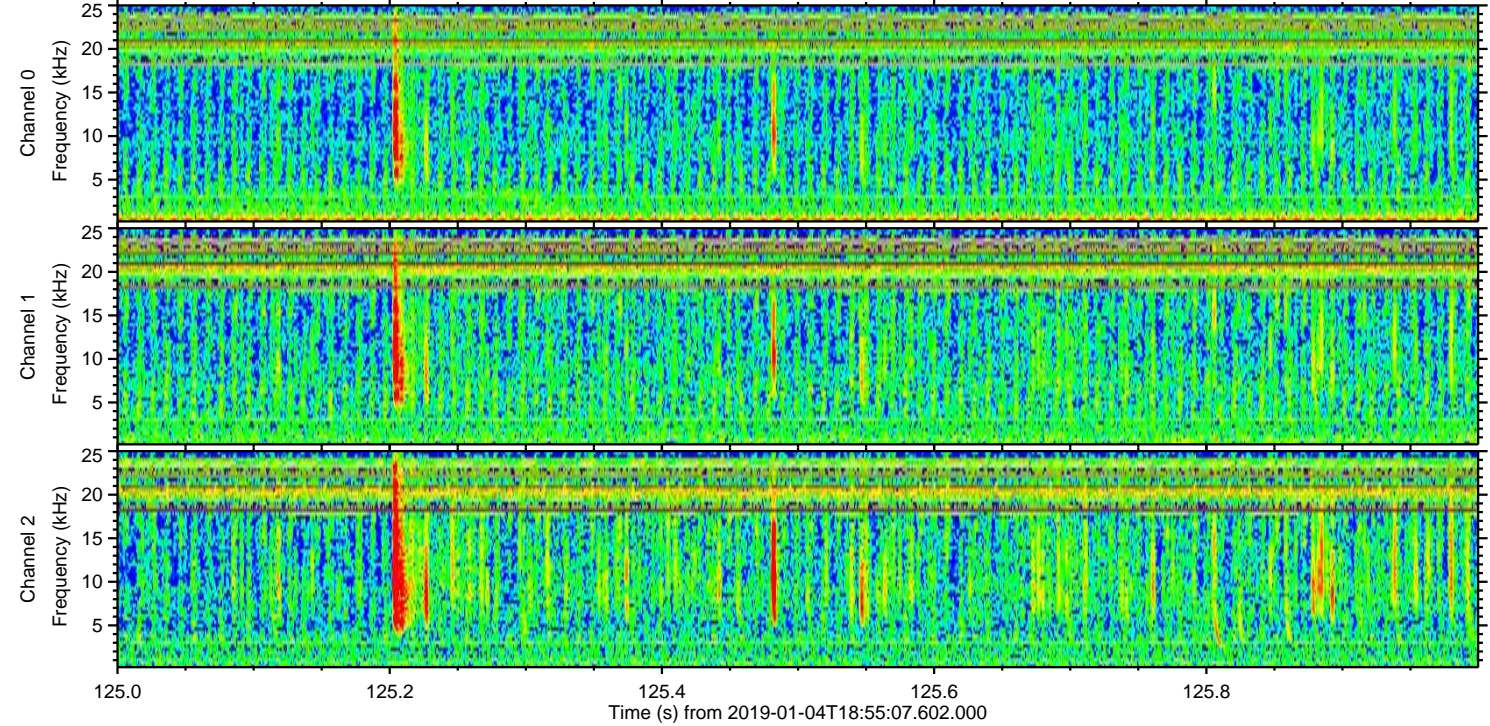
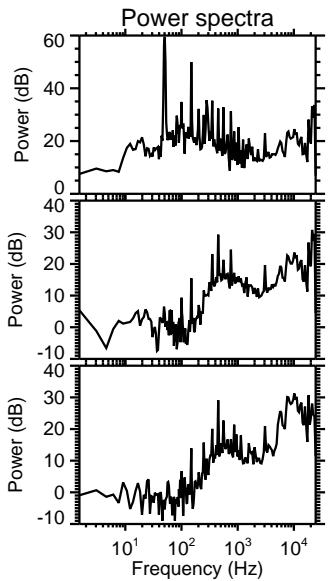
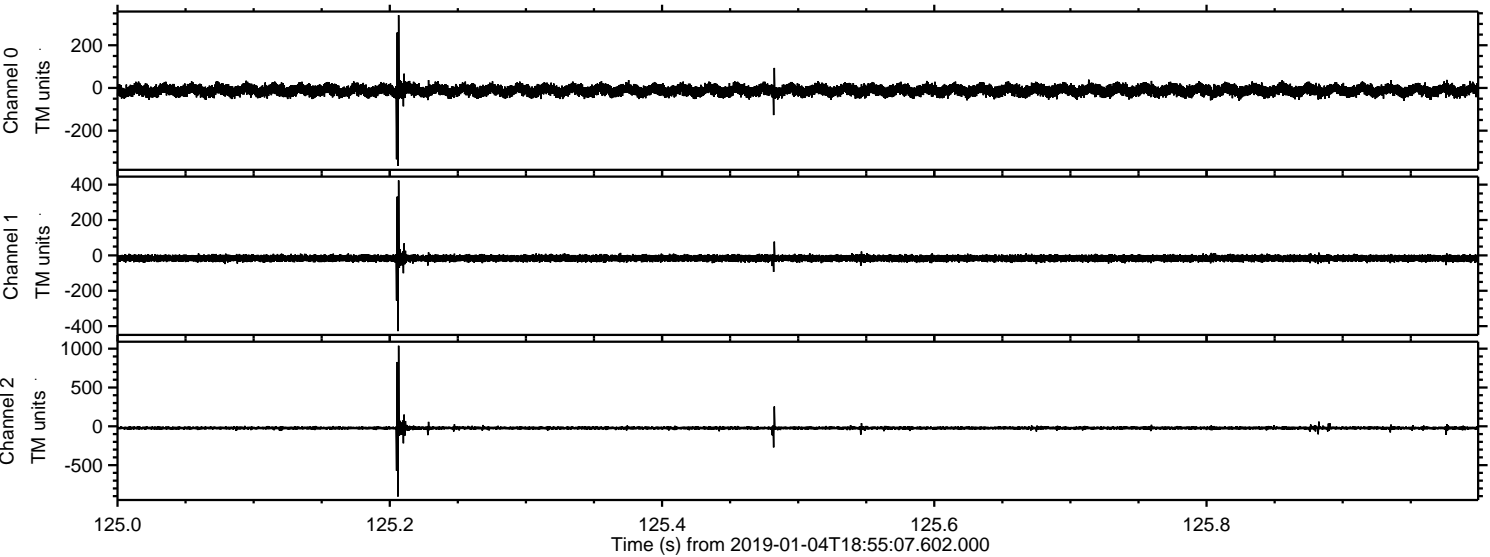


Processed Fri Jan 4 20:02:49 2019 by ELM ver.2012-10-06 from 001__elm20190104_185506__dat00.bin



ELMAVAN 3D WAVEFORMS (Measured data sampled at 50 kHz) 51000 packets of 144 samples from 2019-01-04T18:55:07.602.000. Part 126/147

Processed Fri Jan 4 20:02:50 2019 by ELM ver.2012-10-06 from 001__elm20190104_185506__dat00.bin

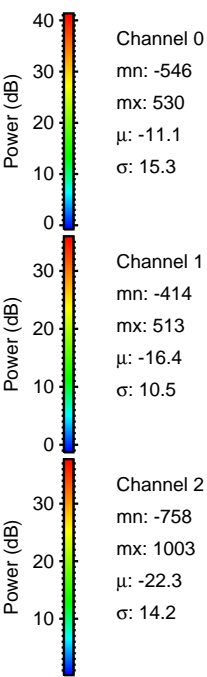
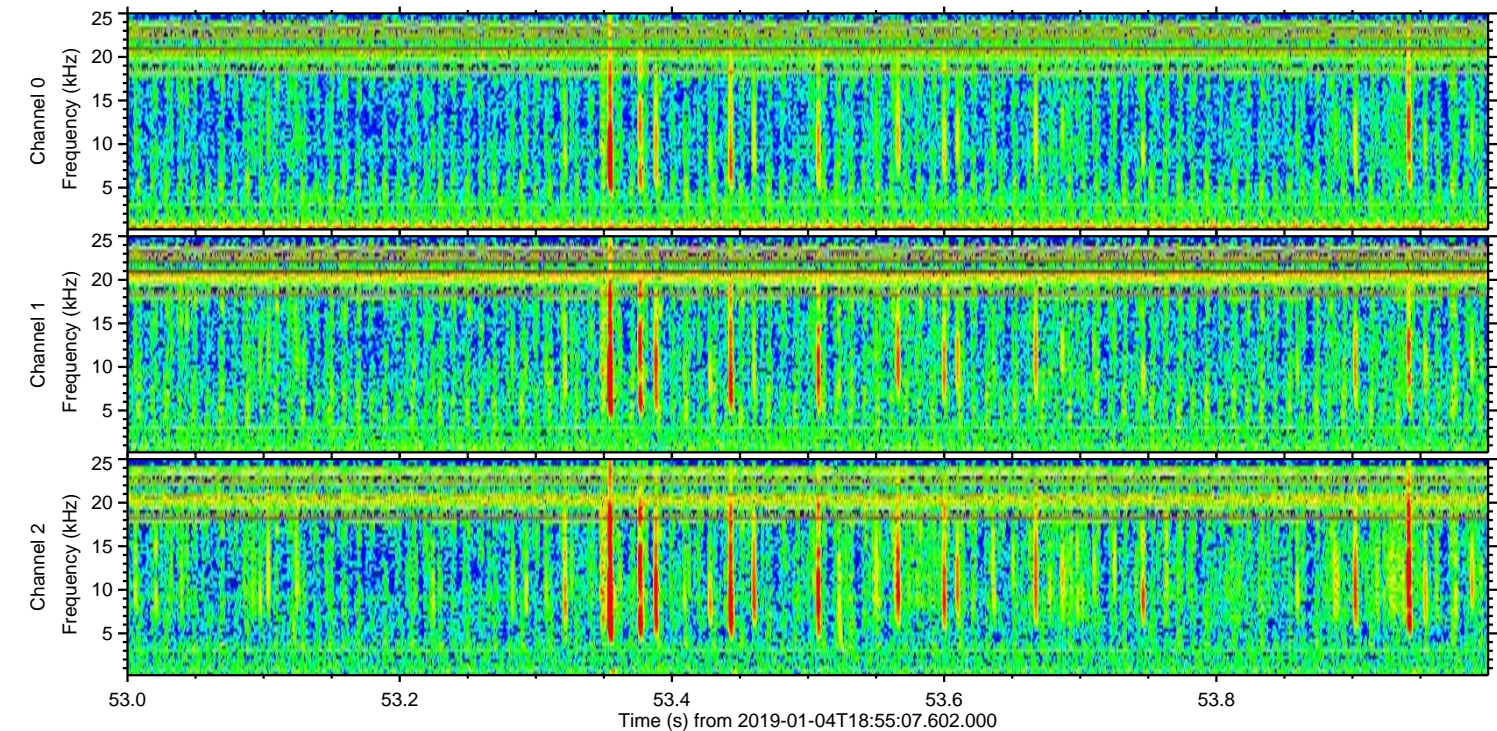
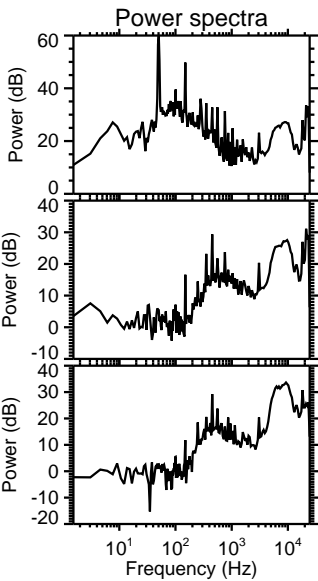
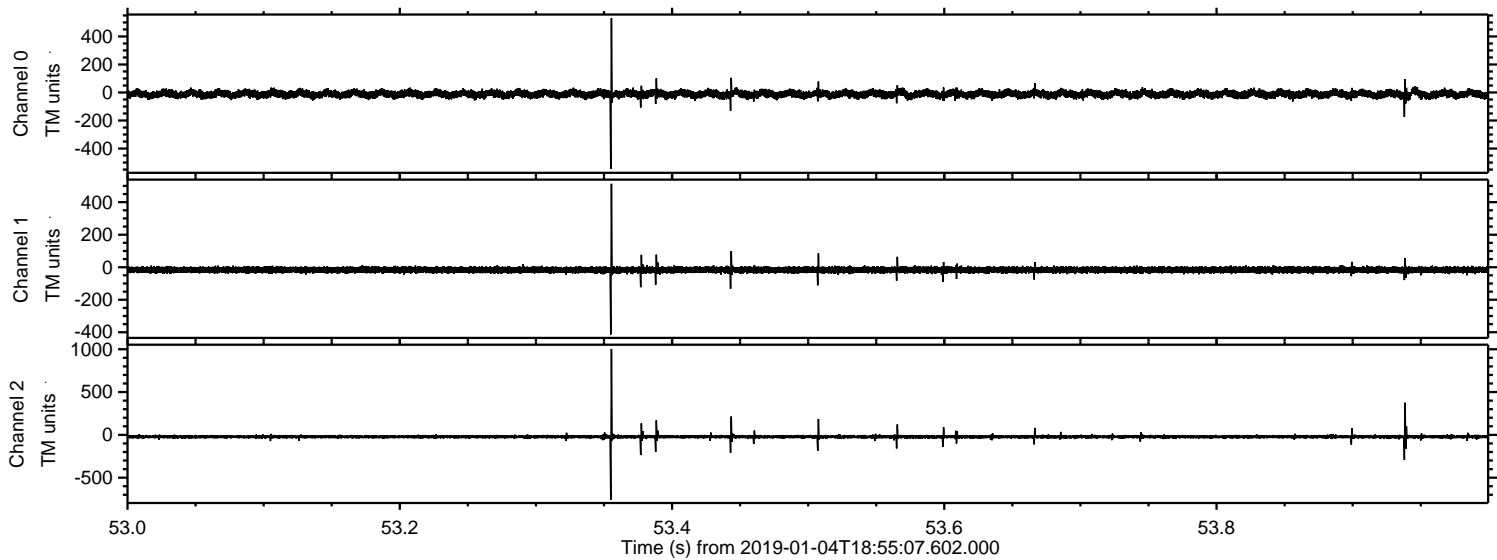


Channel 0
mn: -365
mx: 341
 μ : -11.1
 σ : 15.0

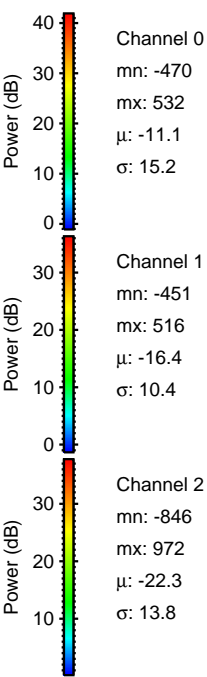
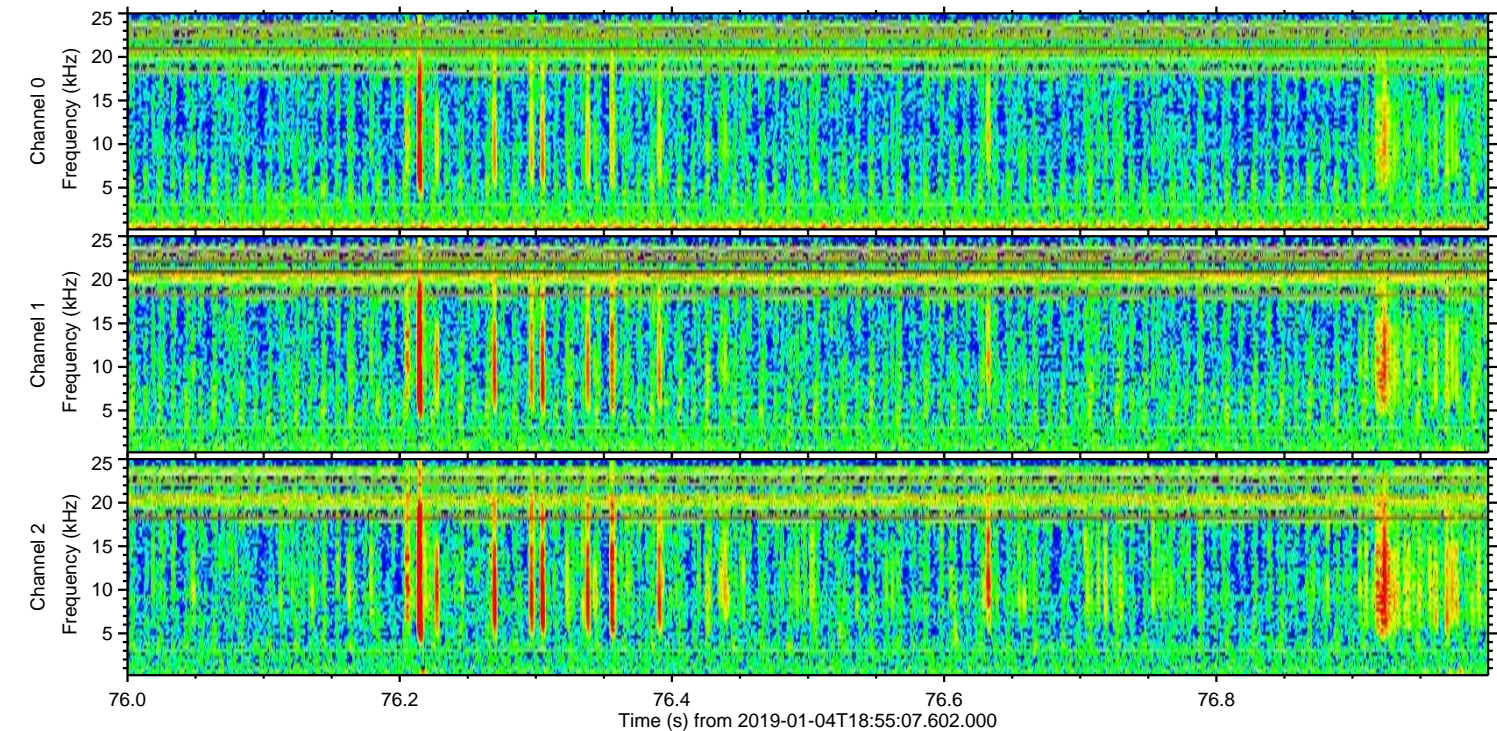
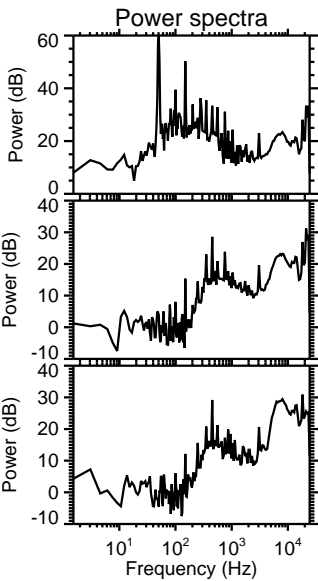
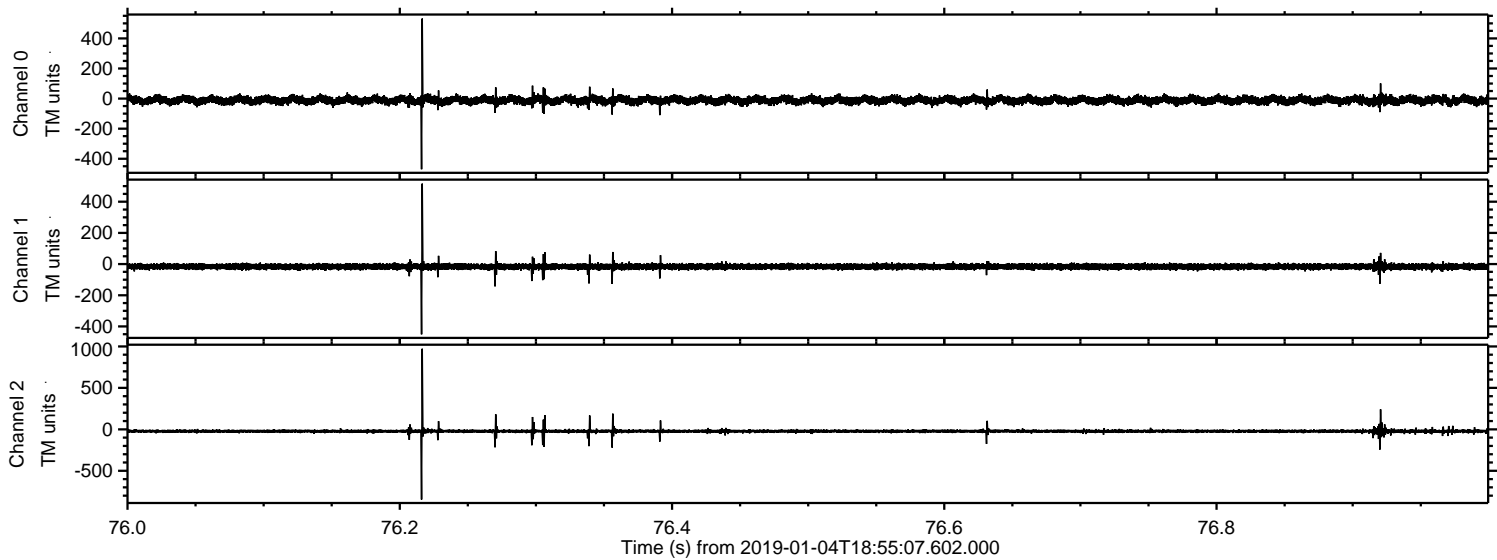
Channel 1
mn: -428
mx: 424
 μ : -16.4
 σ : 10.1

Channel 2
mn: -904
mx: 1038
 μ : -22.4
 σ : 14.8

Processed Fri Jan 4 20:02:51 2019 by ELM ver.2012-10-06 from 001__elm20190104_185506__dat00.bin



Processed Fri Jan 4 20:02:52 2019 by ELM ver.2012-10-06 from 001__elm20190104_185506__dat00.bin

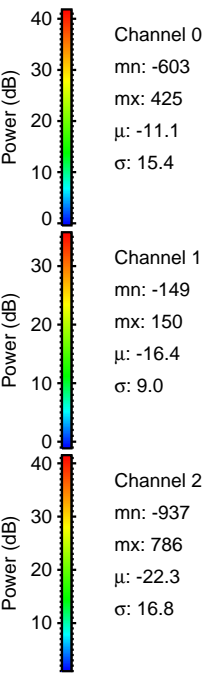
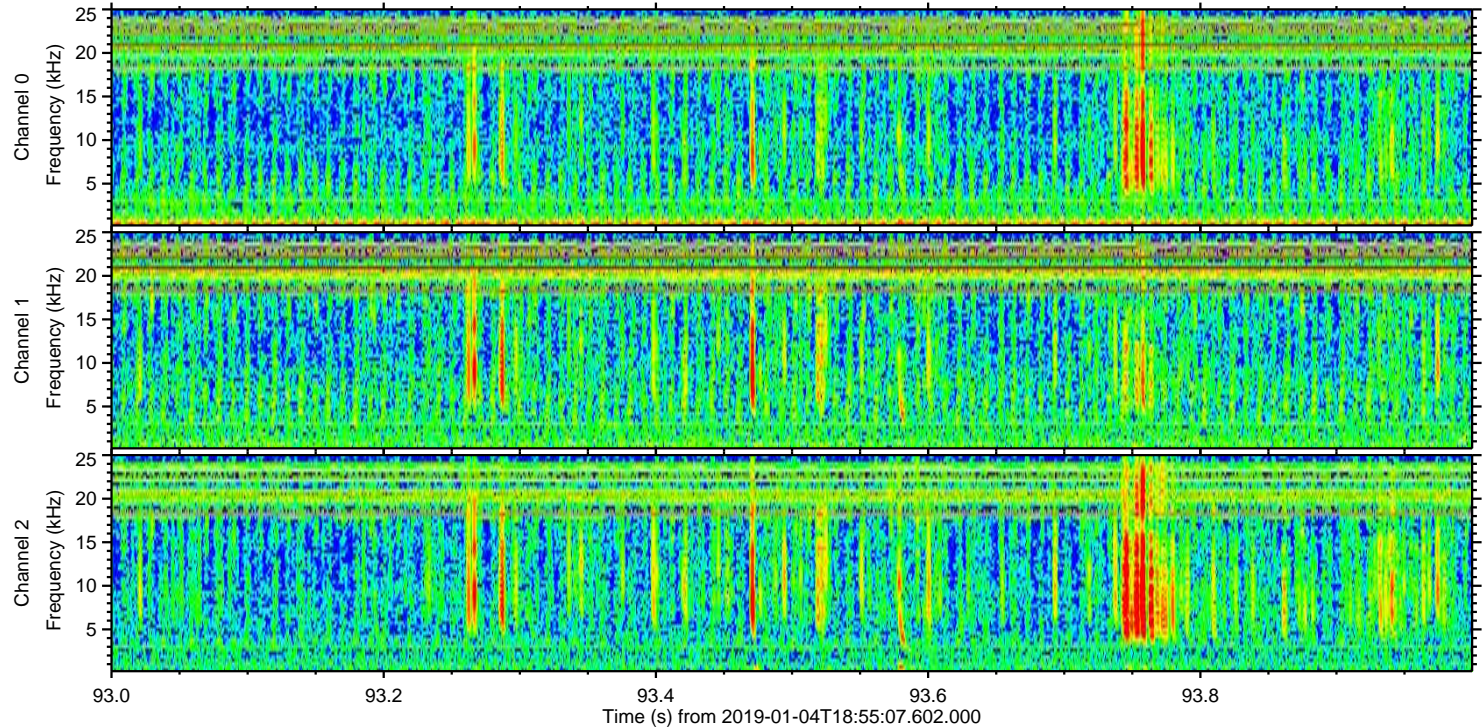
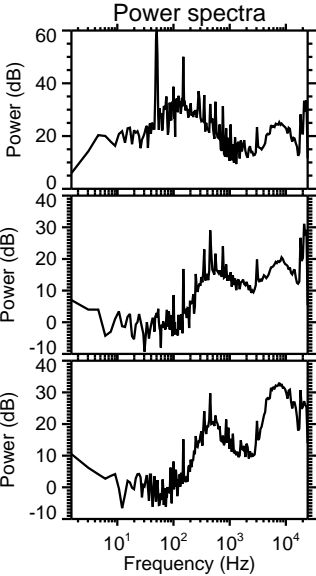
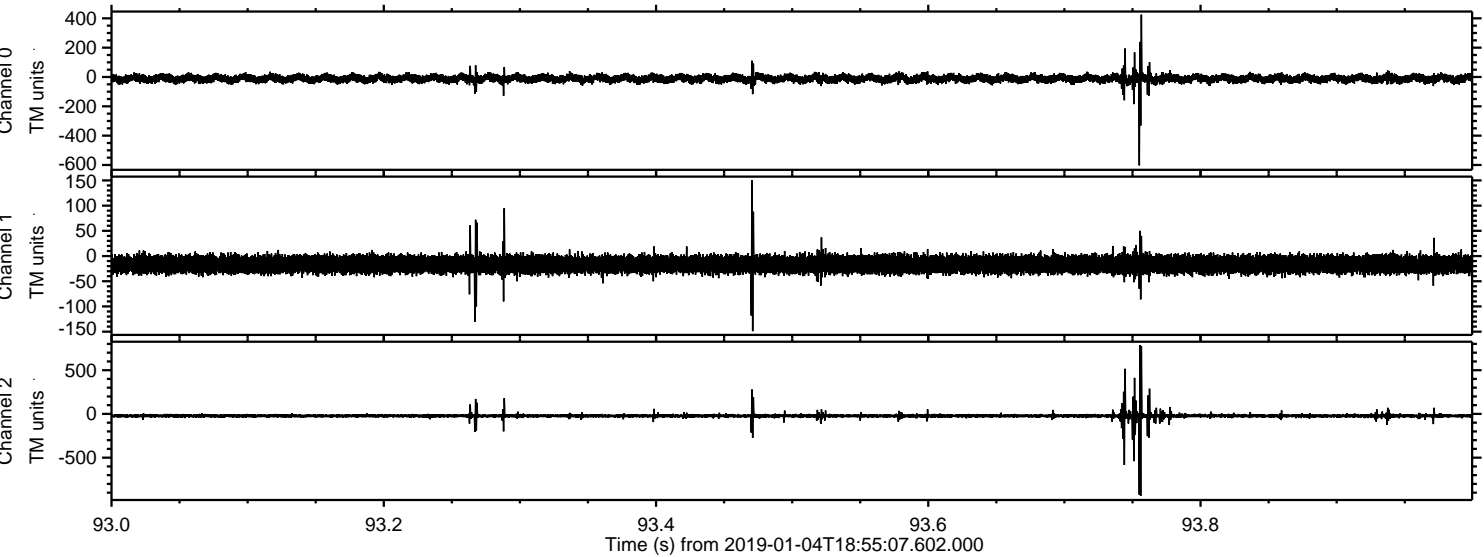


Channel 0
mn: -470
mx: 532
 μ : -11.1
 σ : 15.2

Channel 1
mn: -451
mx: 516
 μ : -16.4
 σ : 10.4

Channel 2
mn: -846
mx: 972
 μ : -22.3
 σ : 13.8

Processed Fri Jan 4 20:02:52 2019 by ELM ver.2012-10-06 from 001__elm20190104_185506__dat00.bin



Processed Fri Jan 4 20:02:53 2019 by ELM ver.2012-10-06 from 001__elm20190104_185506__dat00.bin

