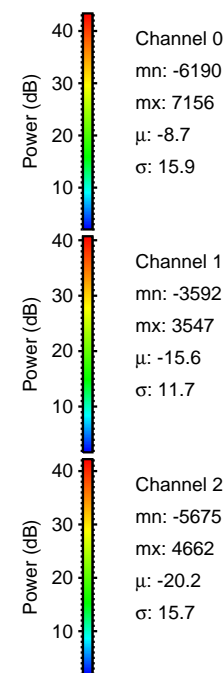
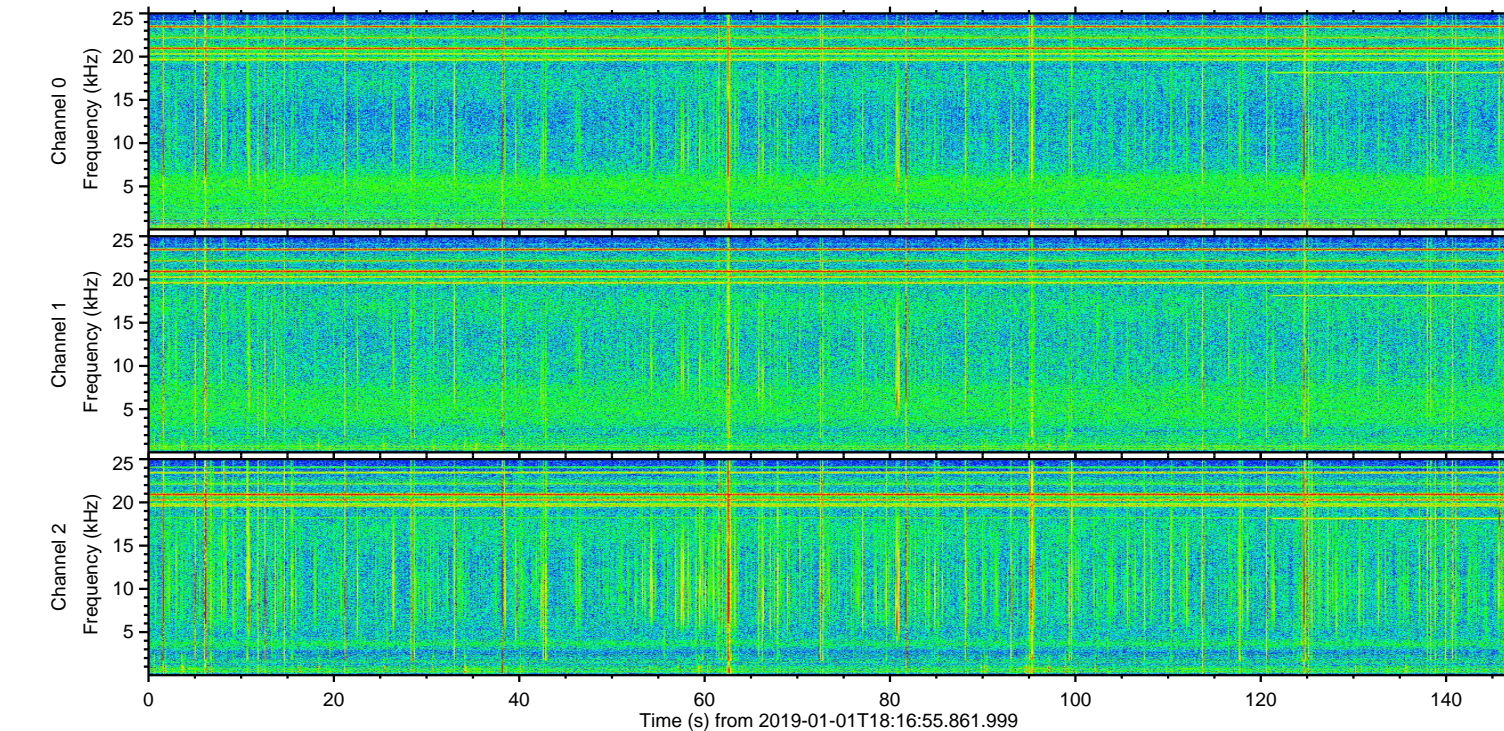
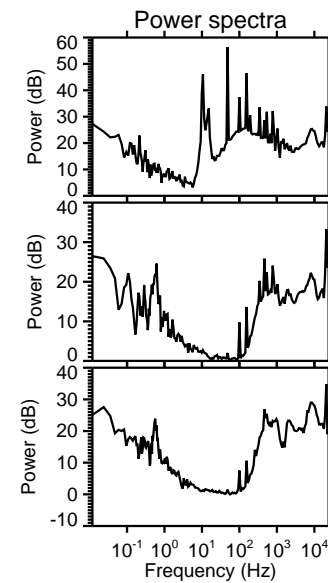
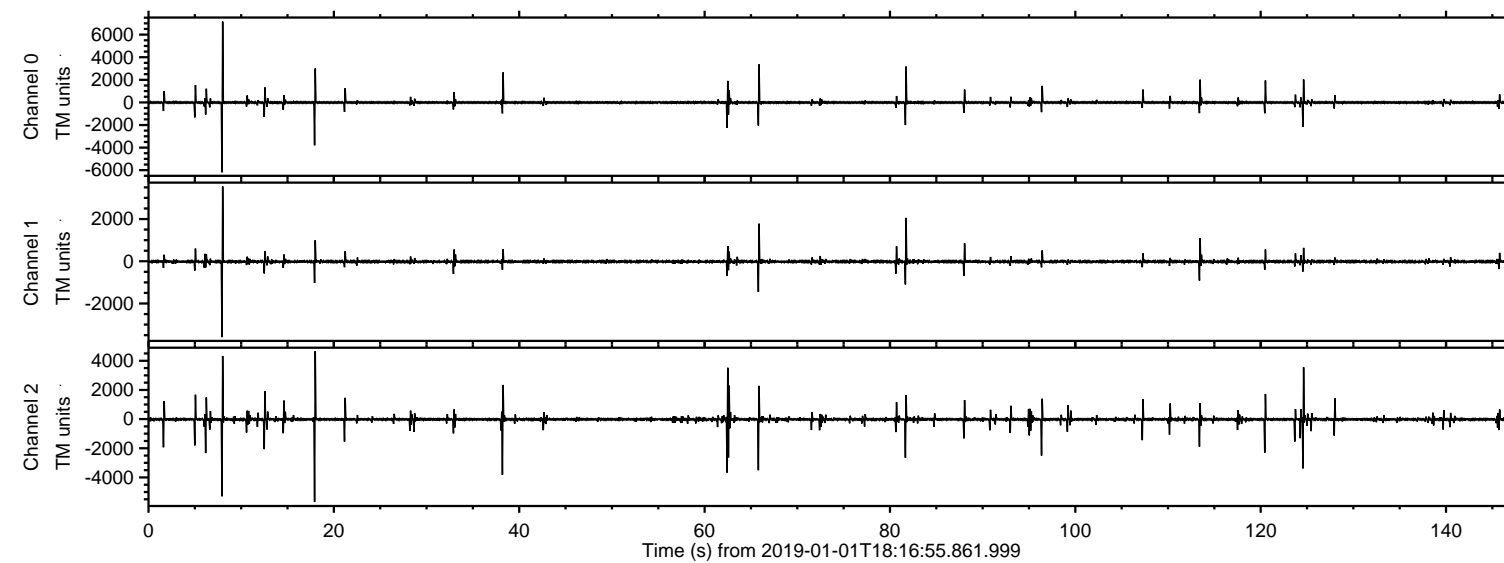


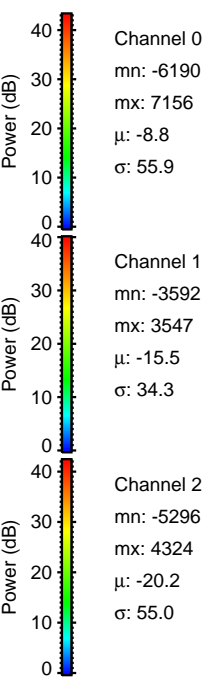
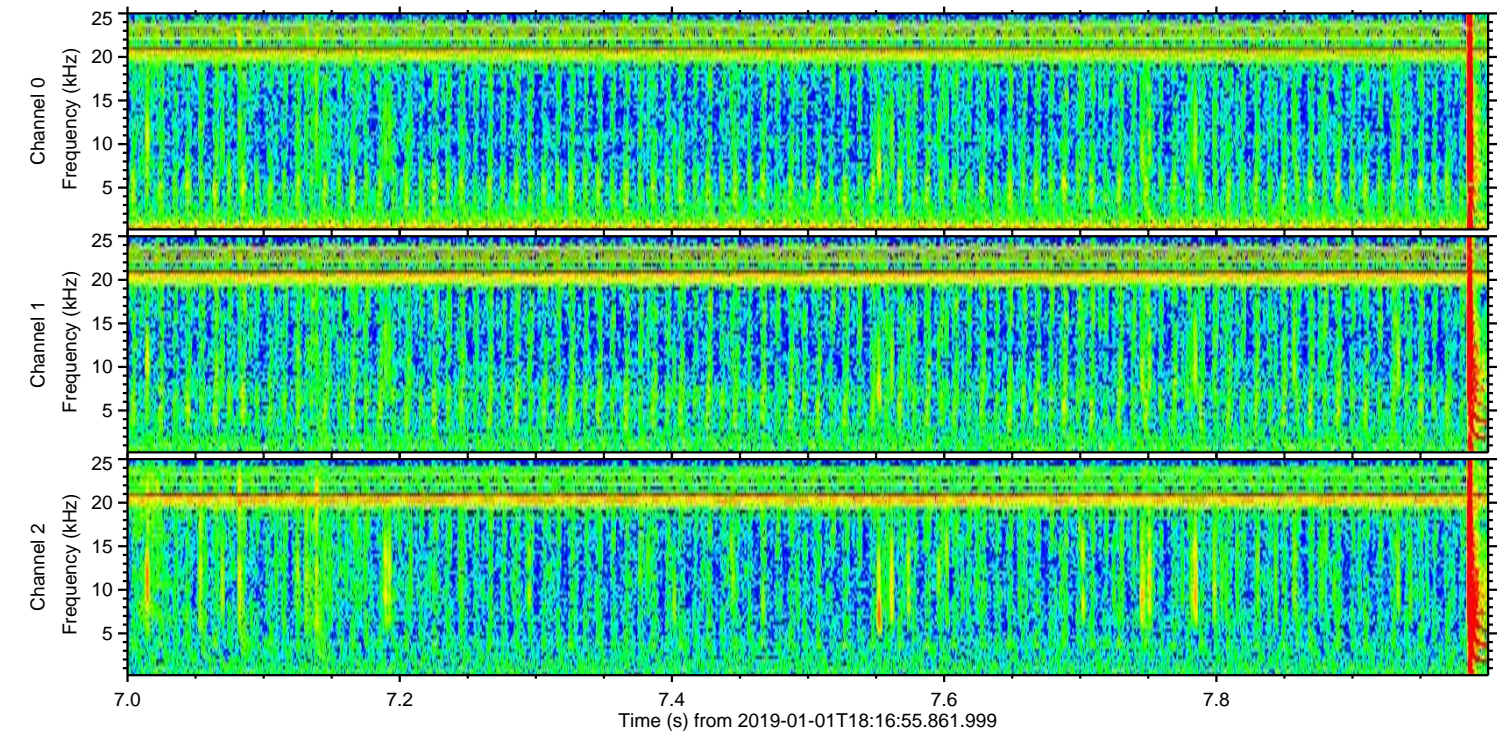
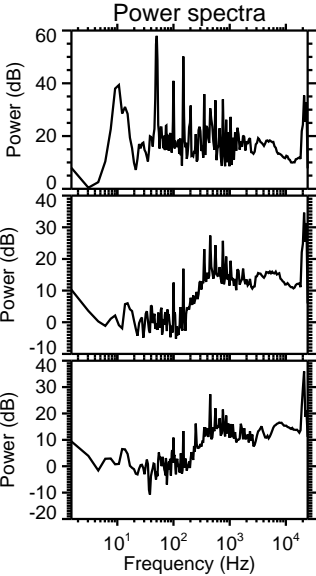
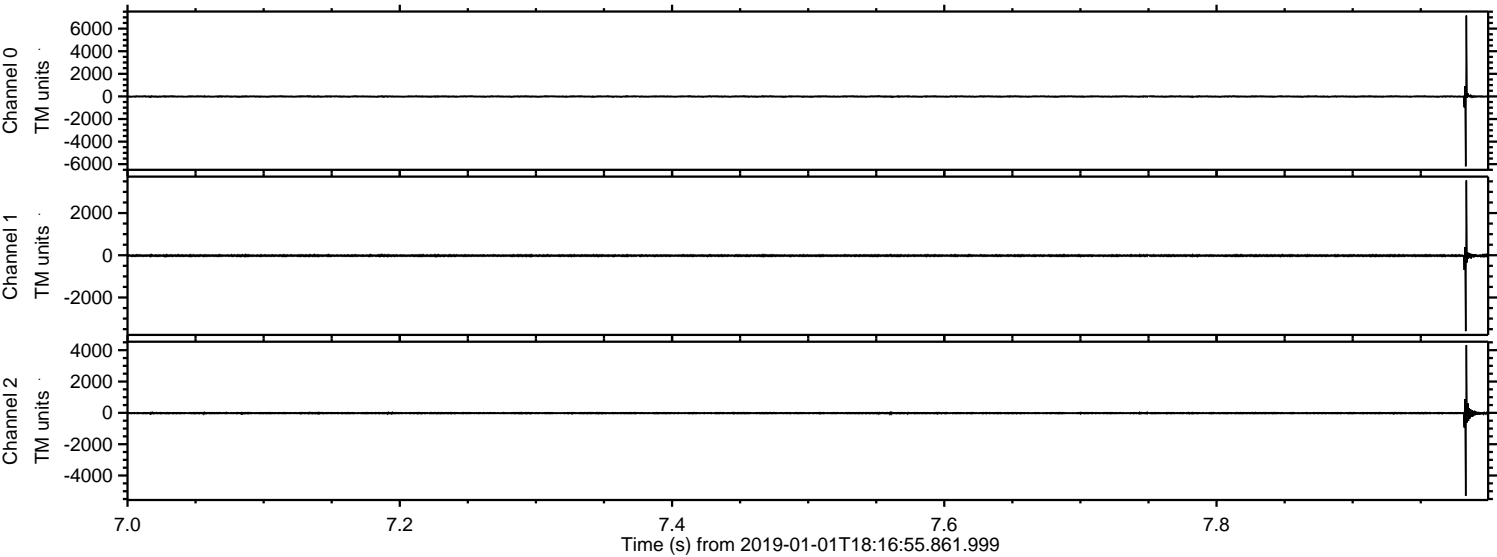
# ELMAVAN 3D WAVEFORMS (Measured data sampled at 50 kHz) 51000 packets of 144 samples from 2019-01-01T18:16:55.861.999.

Processed Tue Jan 1 19:25:27 2019 by ELM ver.2012-10-06 from 001\_\_elm20190101\_181654\_\_dat00.bin



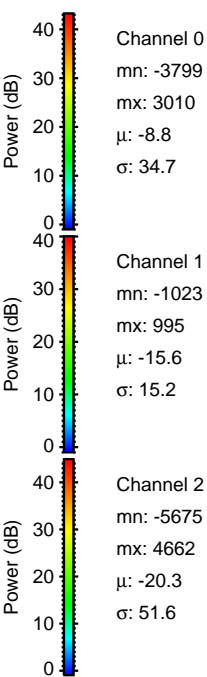
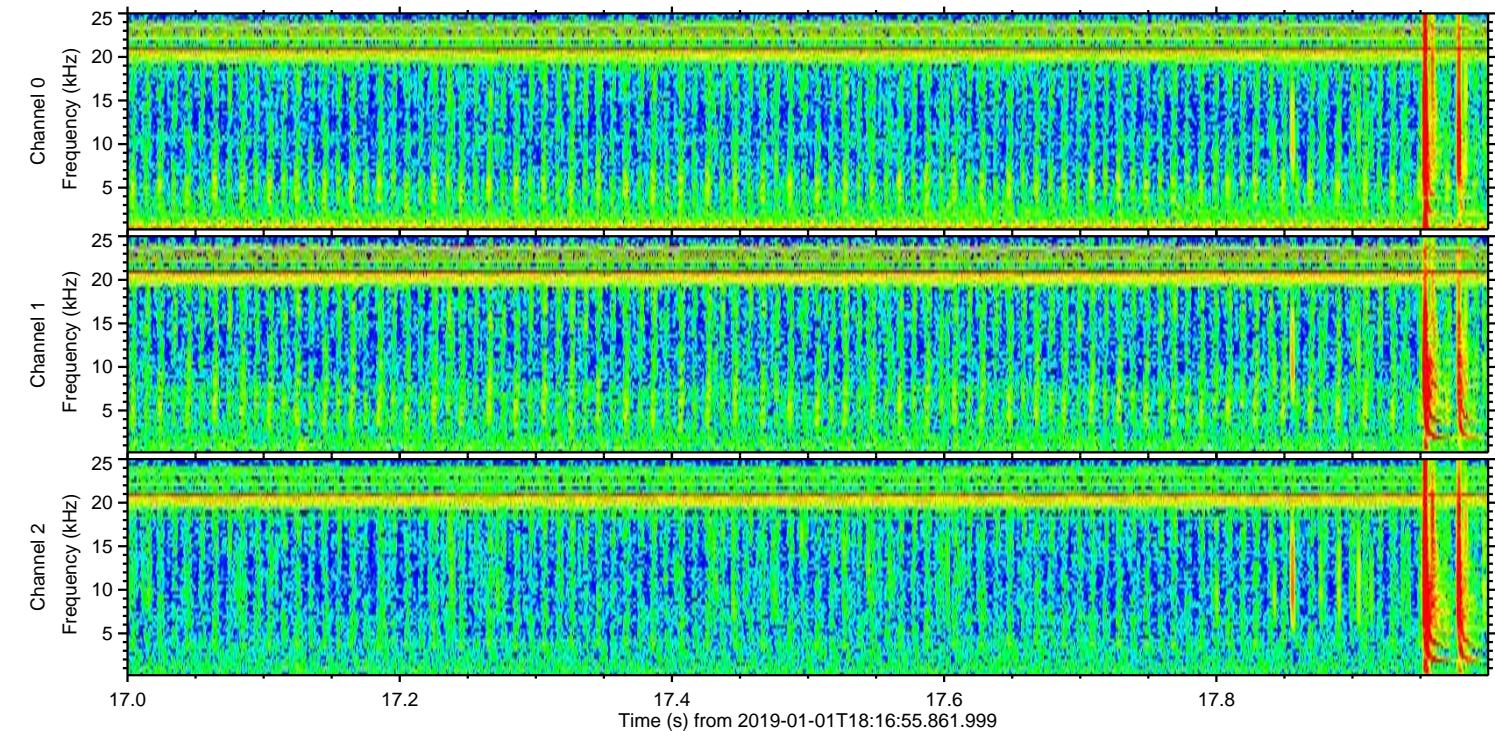
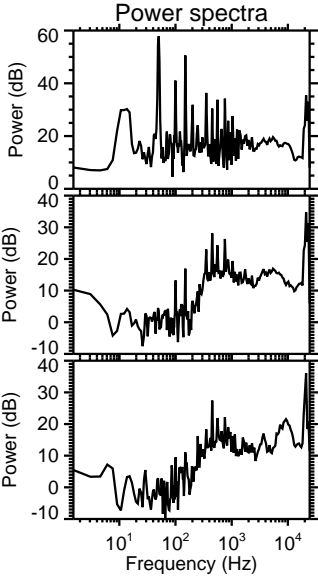
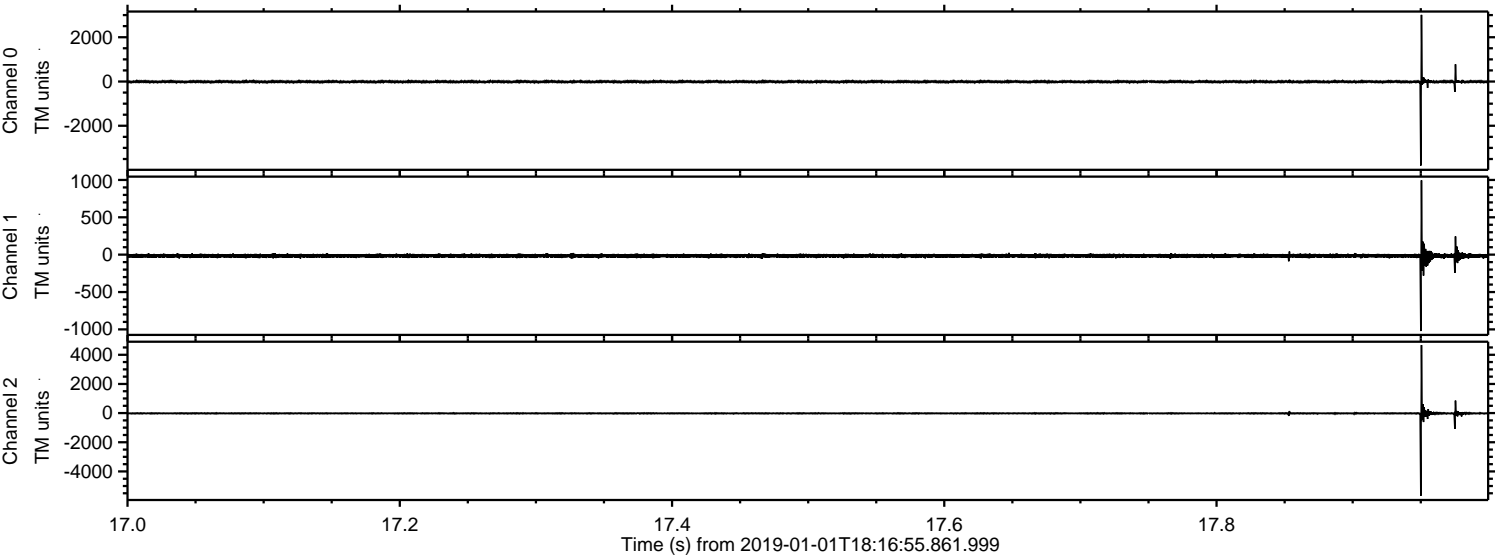


Processed Tue Jan 1 19:25:34 2019 by ELM ver.2012-10-06 from 001\_\_elm20190101\_181654\_\_dat00.bin



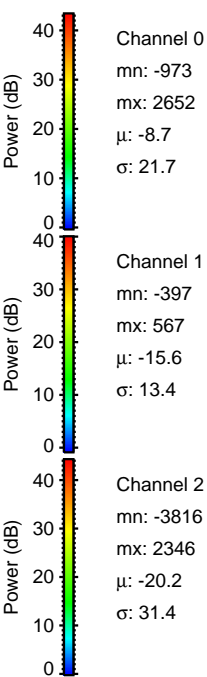
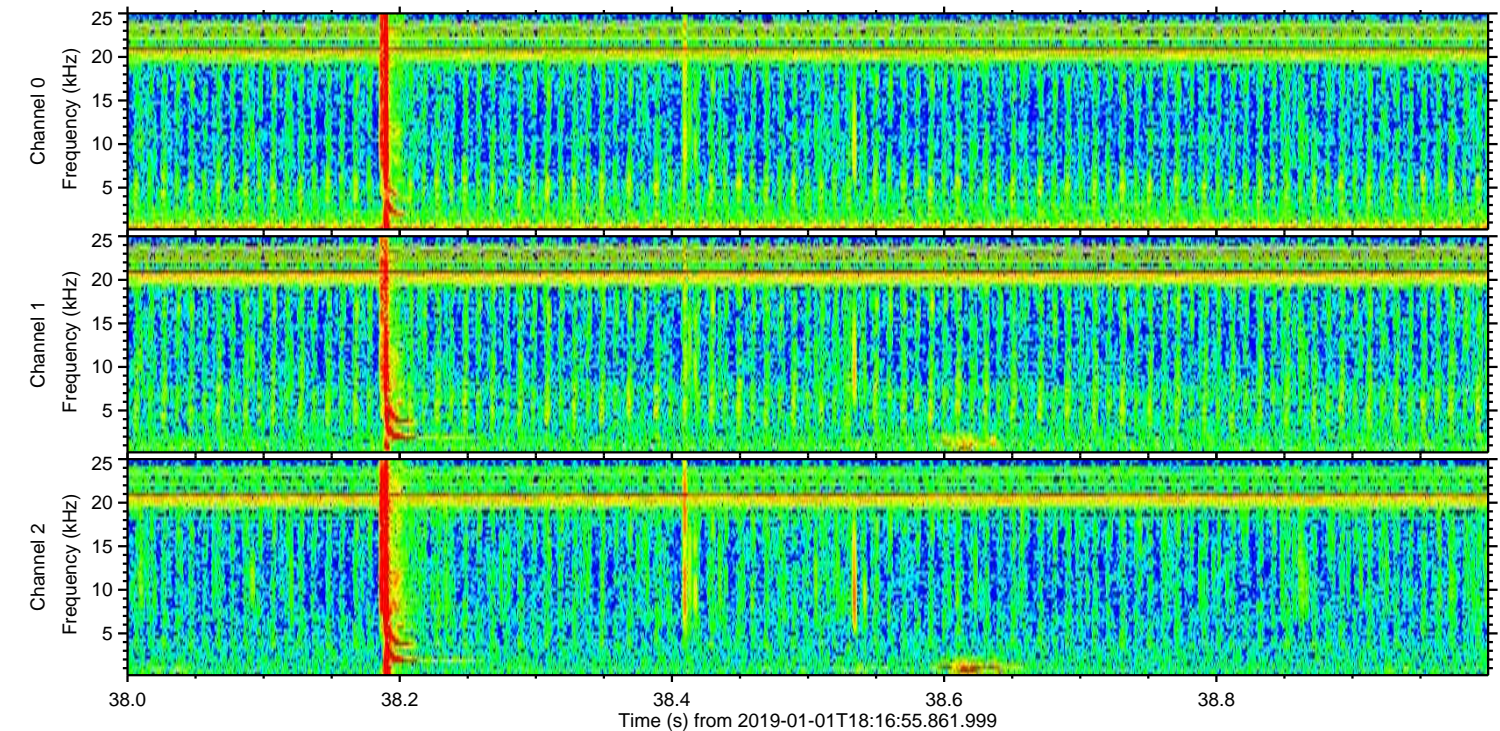
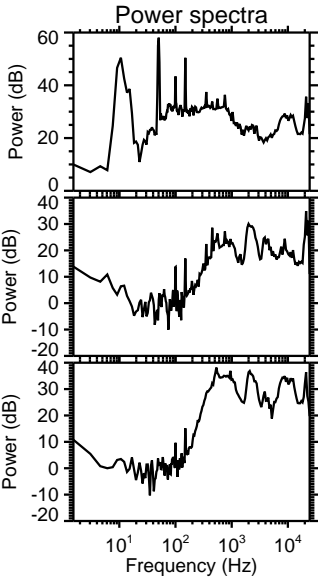
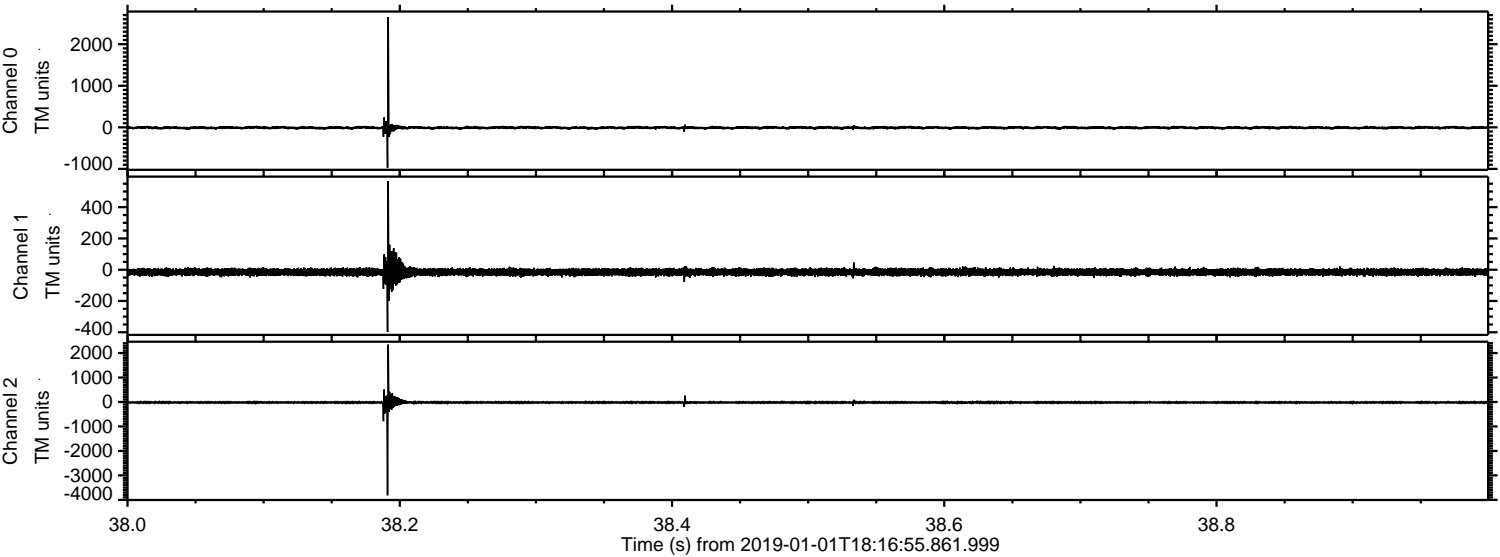


Processed Tue Jan 1 19:25:35 2019 by ELM ver.2012-10-06 from 001\_\_elm20190101\_181654\_\_dat00.bin



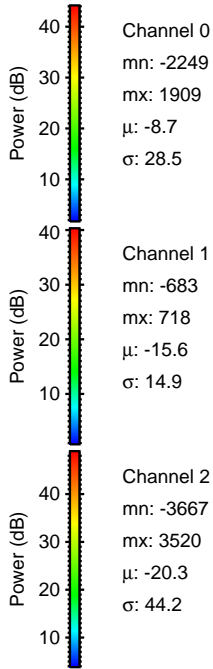
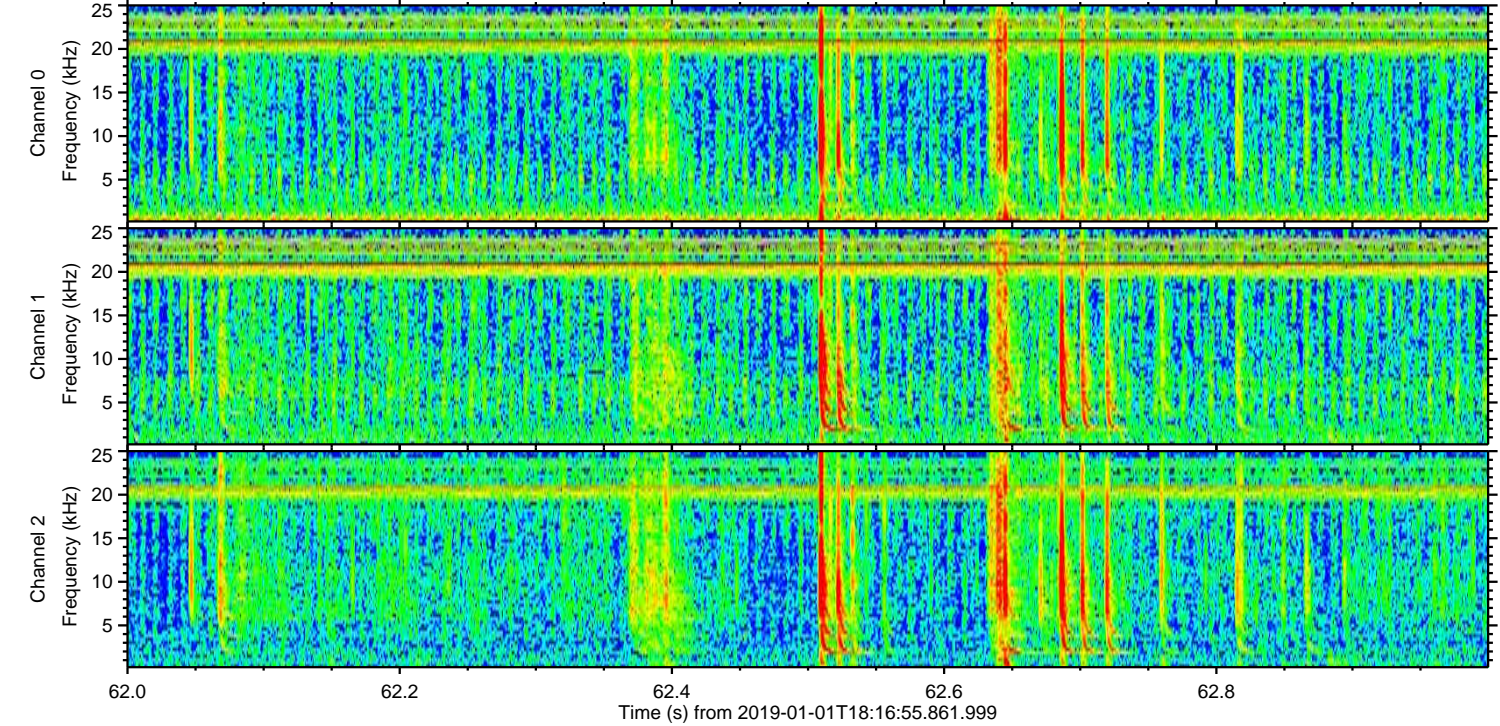
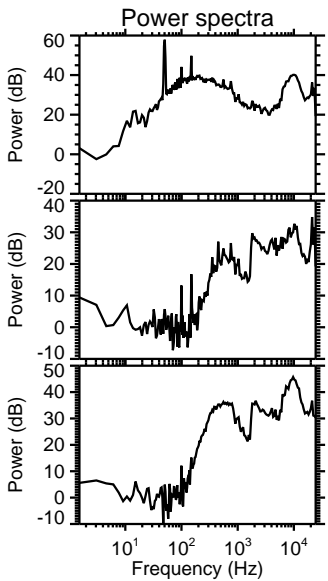
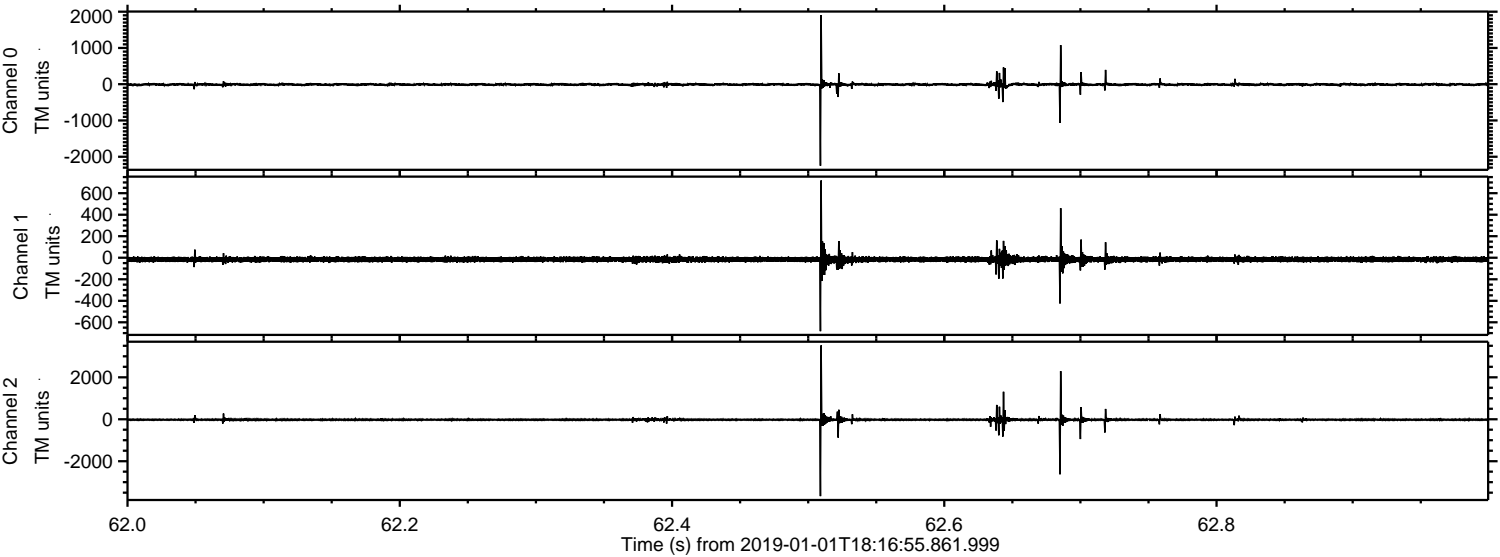


Processed Tue Jan 1 19:25:36 2019 by ELM ver.2012-10-06 from 001\_\_elm20190101\_181654\_\_dat00.bin





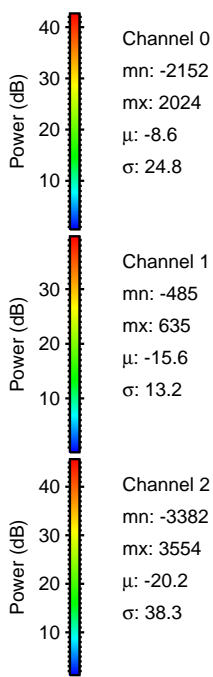
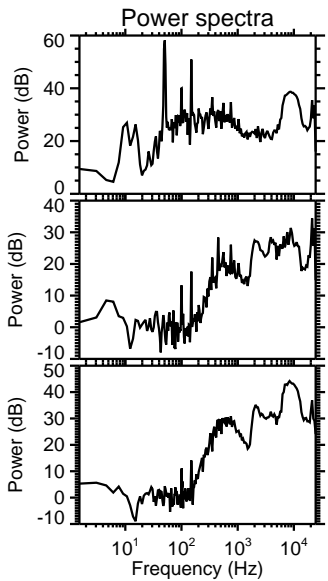
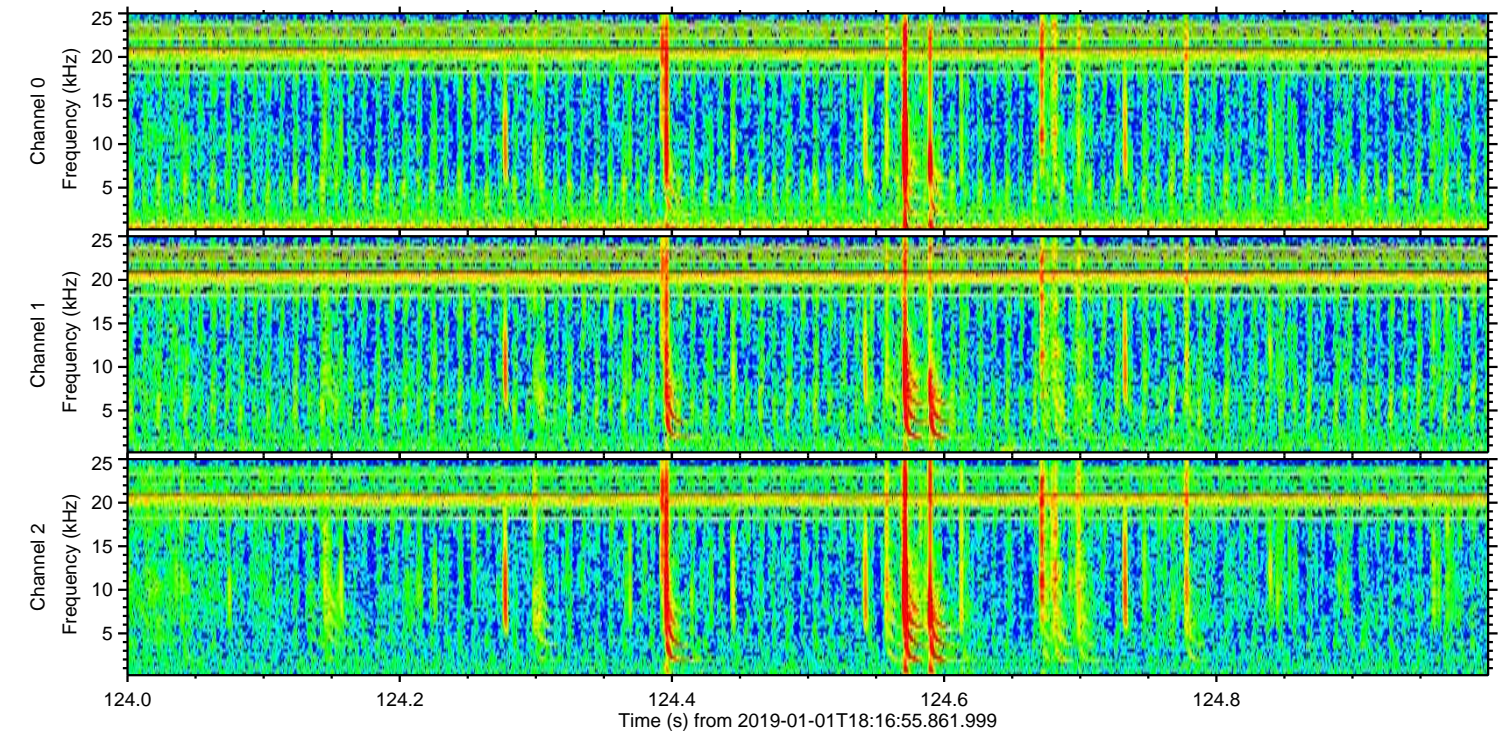
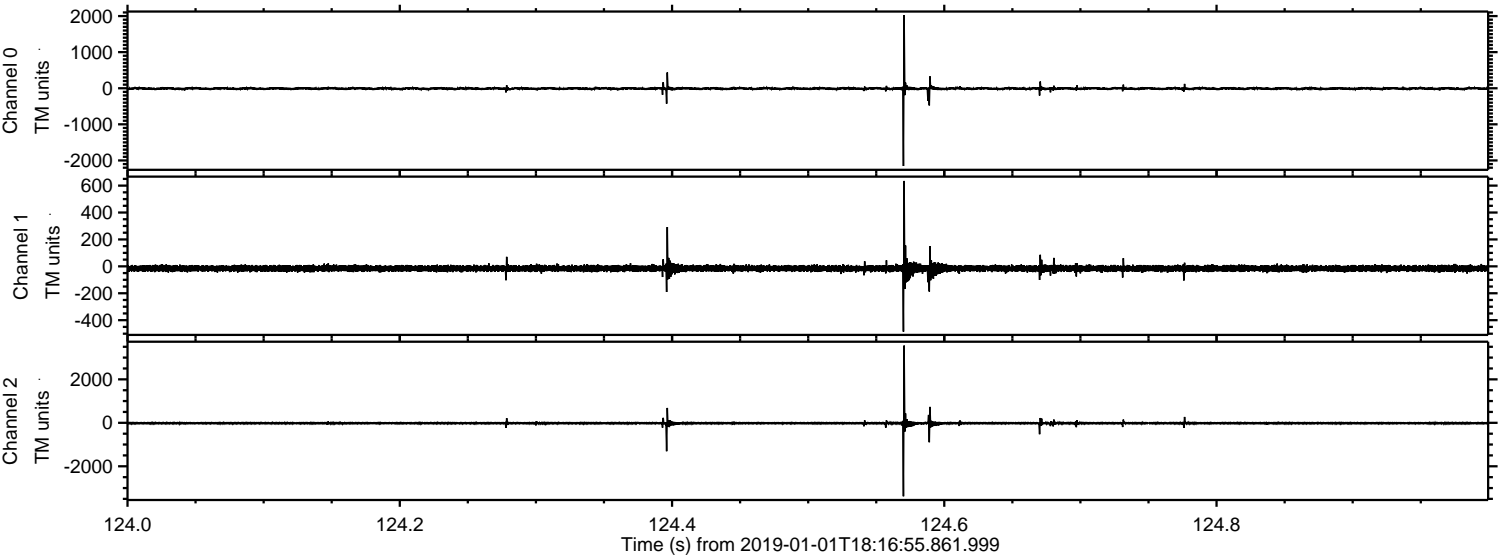
Processed Tue Jan 1 19:25:36 2019 by ELM ver.2012-10-06 from 001\_\_elm20190101\_181654\_\_dat00.bin





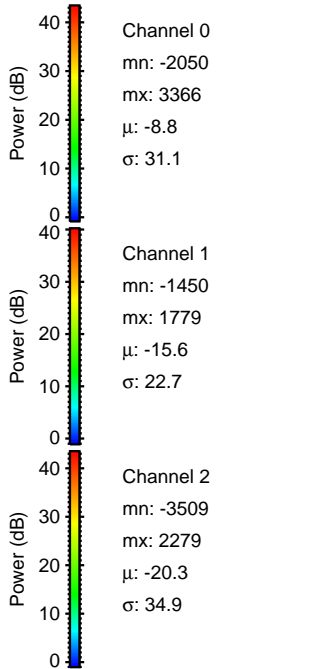
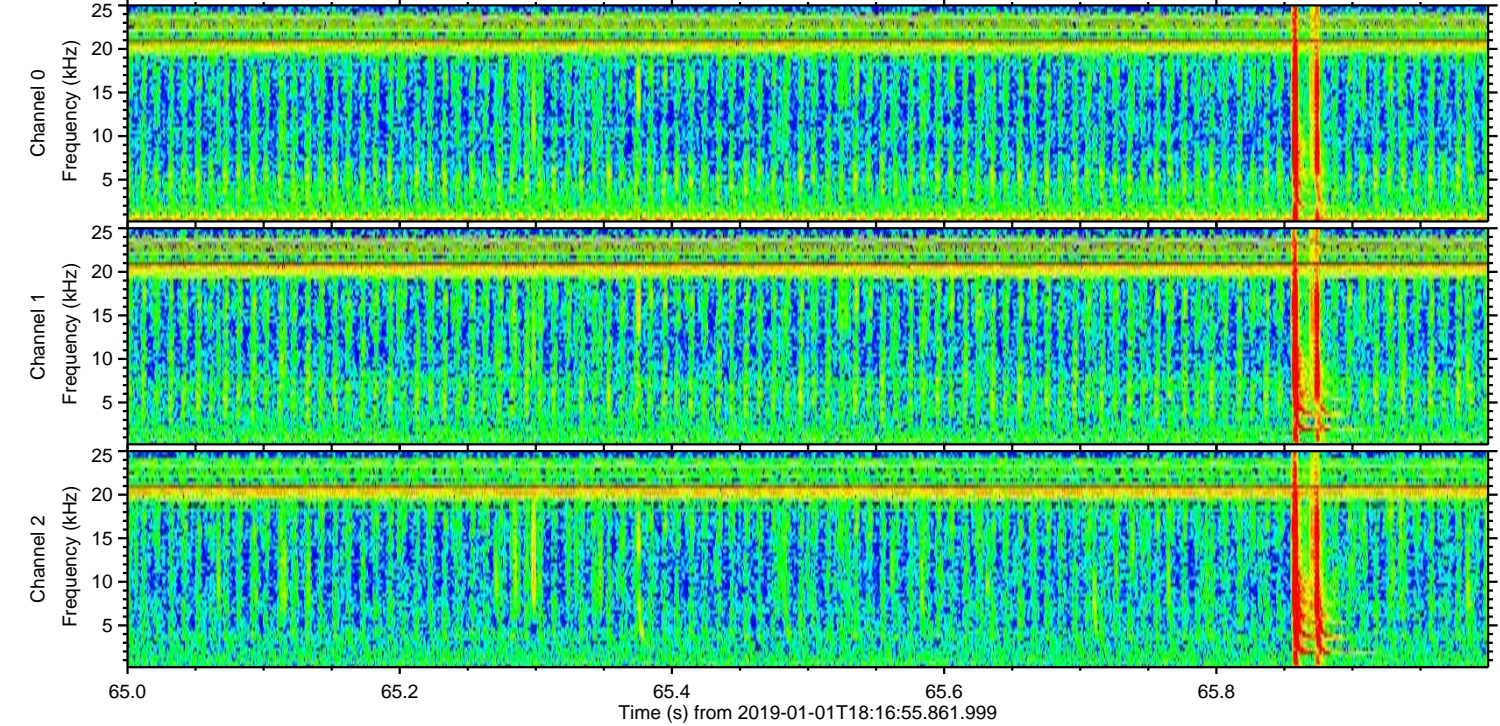
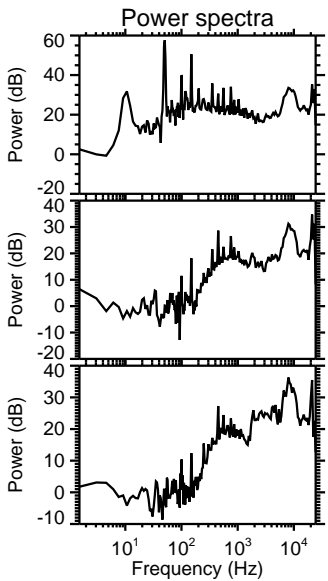
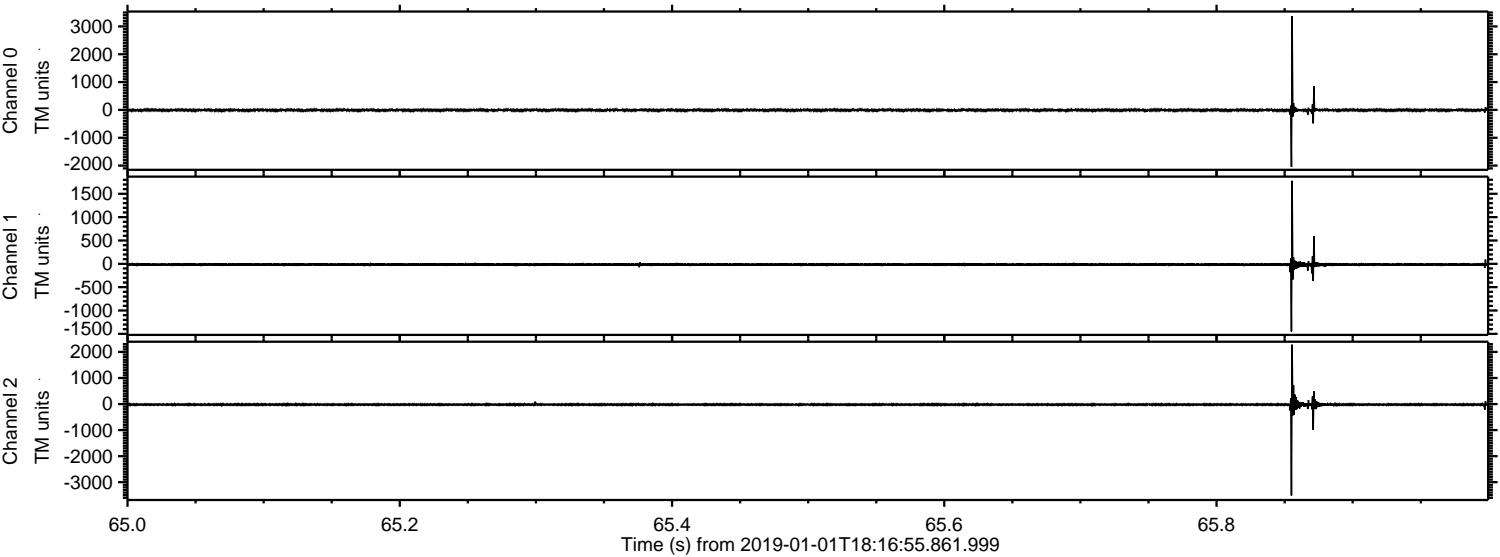
ELMAVAN 3D WAVEFORMS (Measured data sampled at 50 kHz) 51000 packets of 144 samples from 2019-01-01T18:16:55.861.999. Part 125/147

Processed Tue Jan 1 19:25:37 2019 by ELM ver.2012-10-06 from 001\_\_elm20190101\_181654\_\_dat00.bin





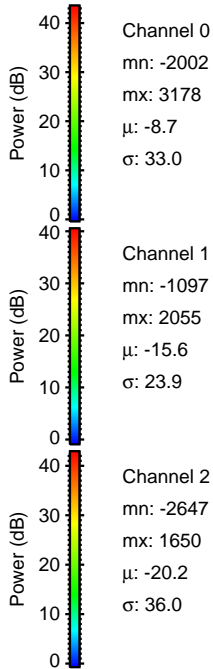
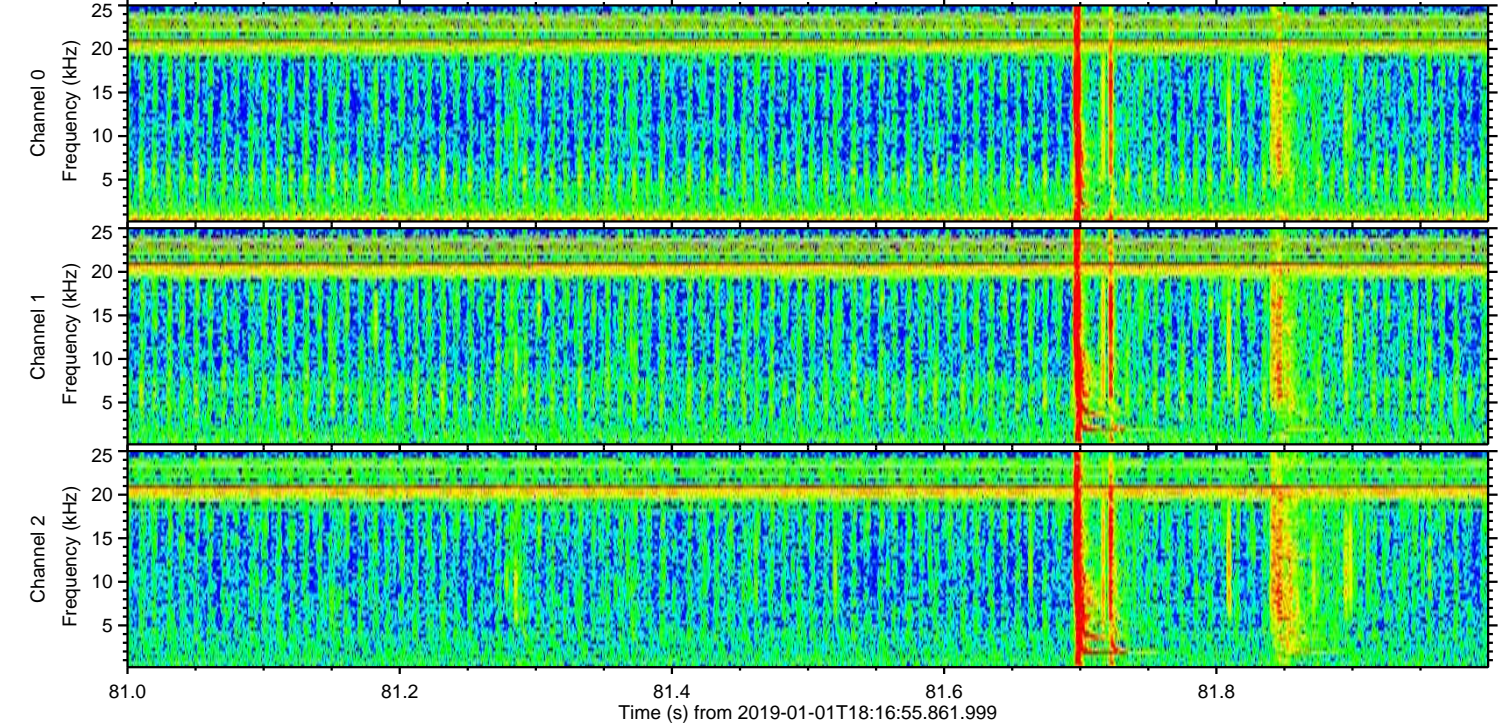
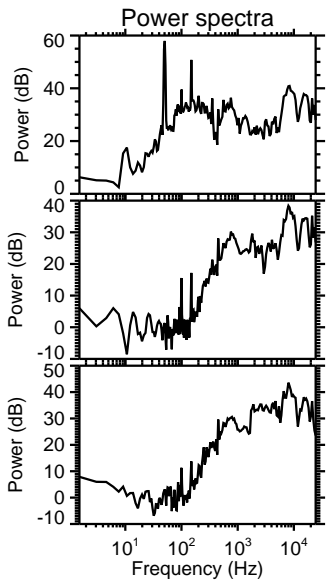
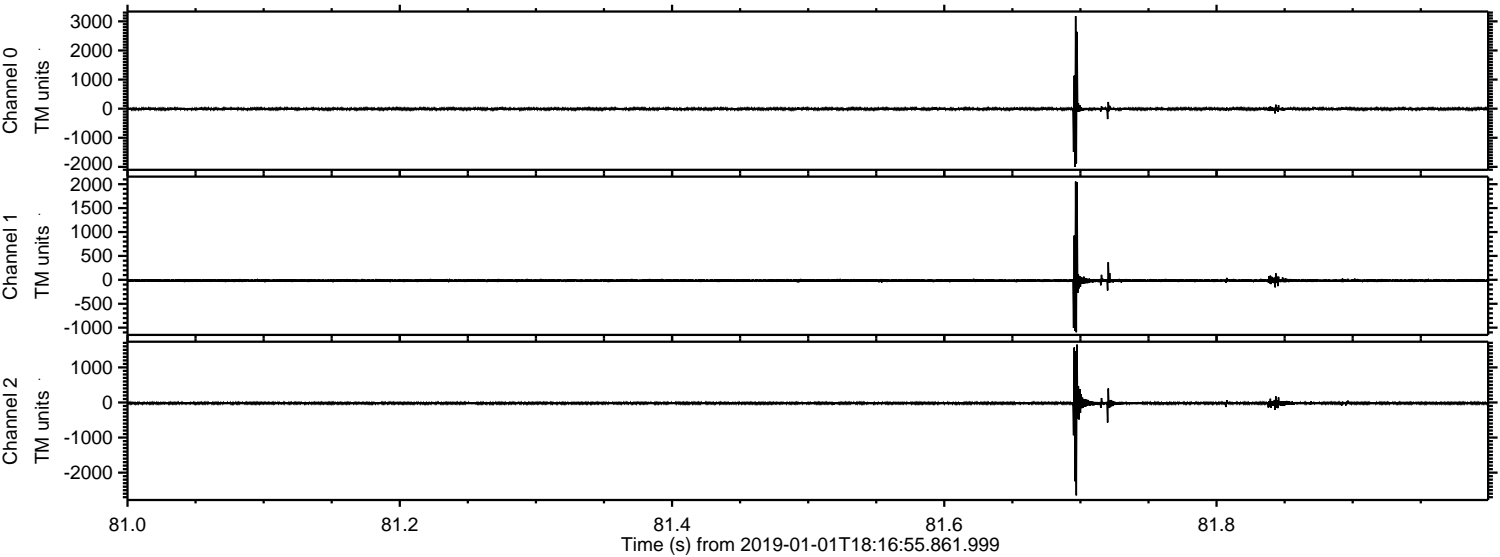
Processed Tue Jan 1 19:25:38 2019 by ELM ver.2012-10-06 from 001\_\_elm20190101\_181654\_\_dat00.bin





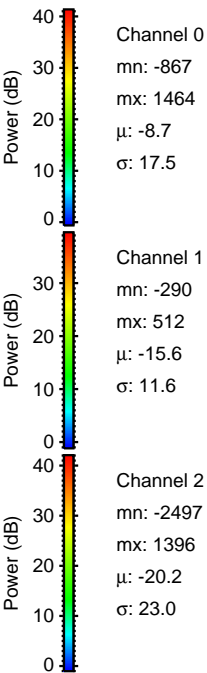
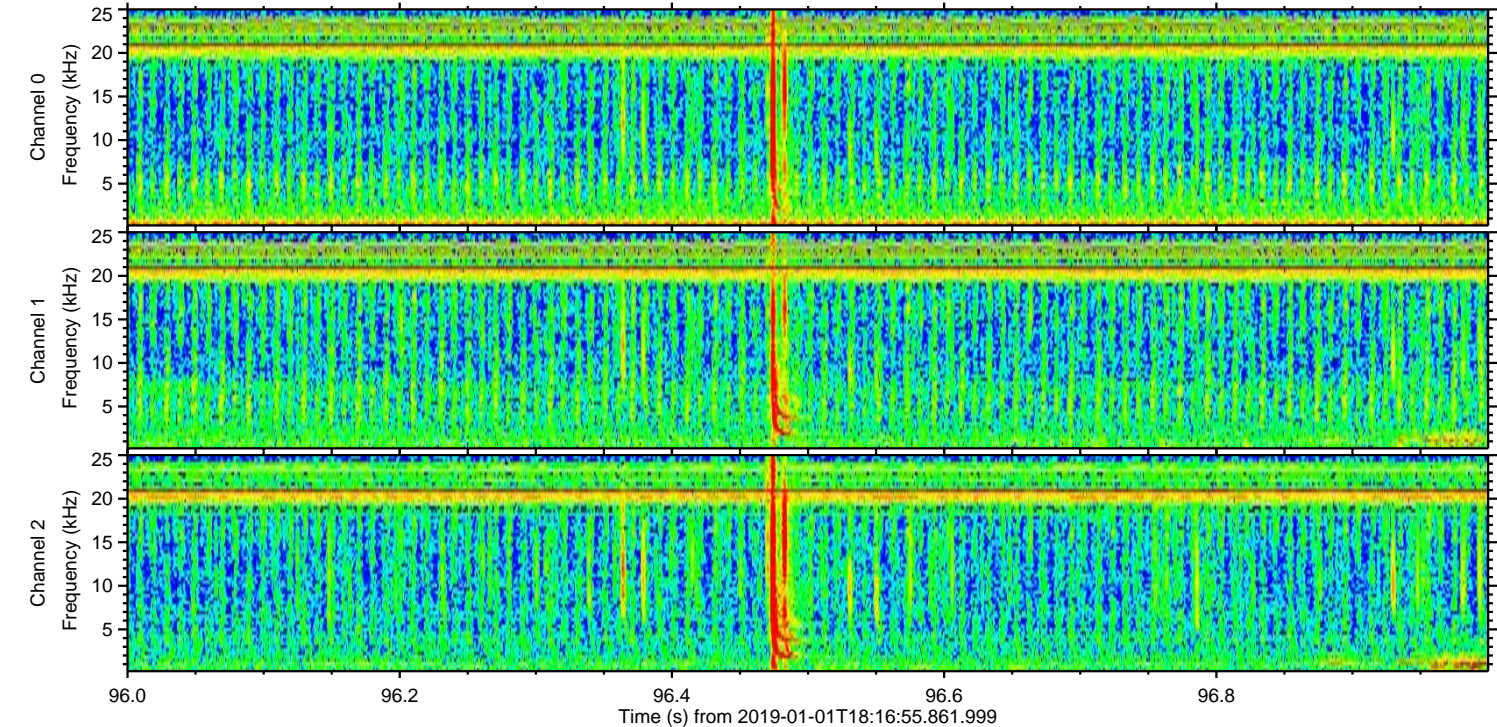
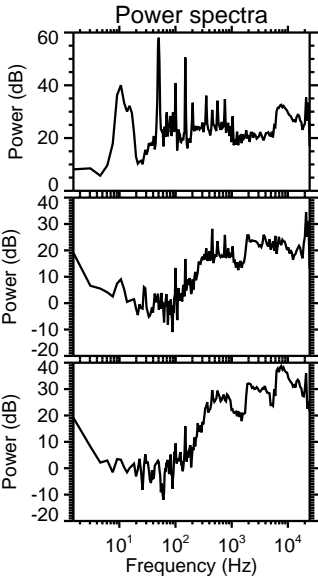
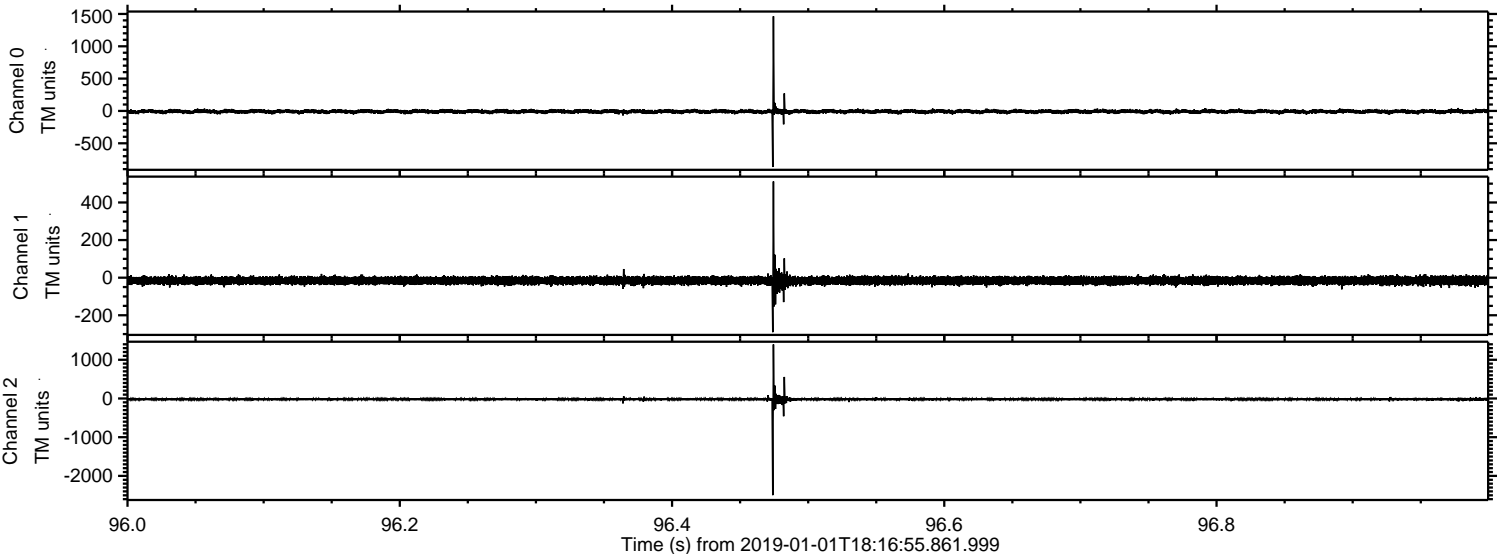
ELMAVAN 3D WAVEFORMS (Measured data sampled at 50 kHz) 51000 packets of 144 samples from 2019-01-01T18:16:55.861.999. Part 82/147

Processed Tue Jan 1 19:25:39 2019 by ELM ver.2012-10-06 from 001\_\_elm20190101\_181654\_\_dat00.bin





Processed Tue Jan 1 19:25:40 2019 by ELM ver.2012-10-06 from 001\_\_elm20190101\_181654\_\_dat00.bin





Processed Tue Jan 1 19:25:41 2019 by ELM ver.2012-10-06 from 001\_\_elm20190101\_181654\_\_dat00.bin

