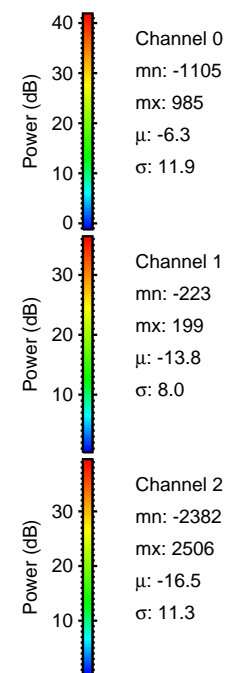
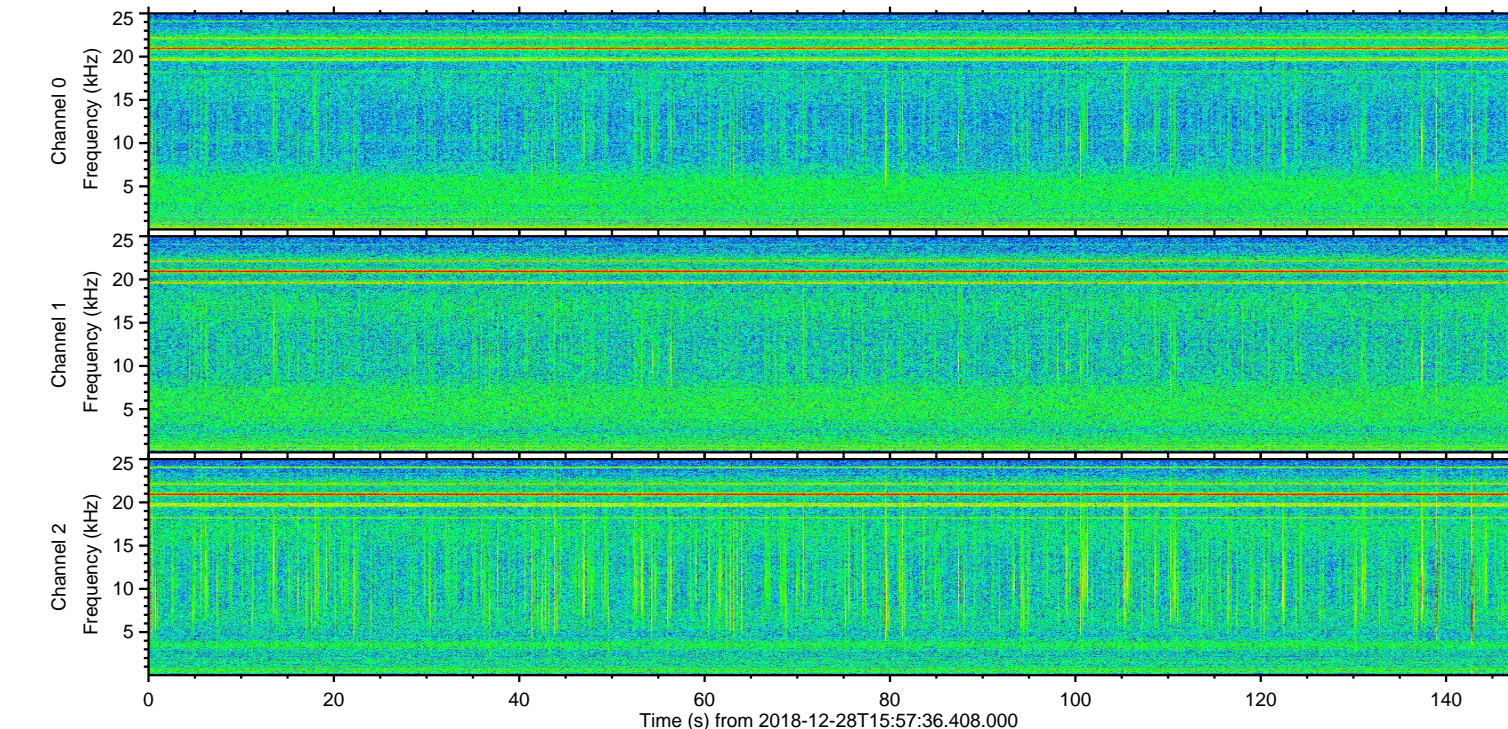
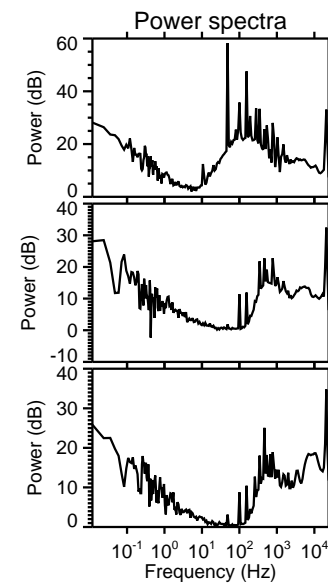
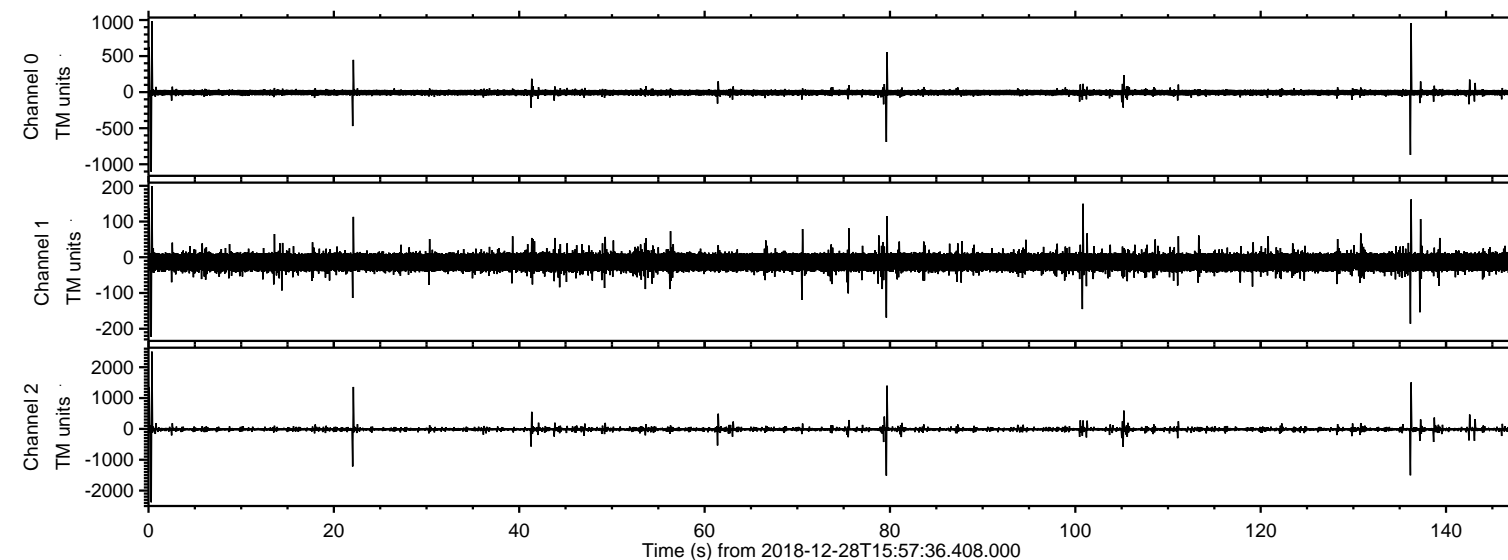


# ELMAVAN 3D WAVEFORMS (Measured data sampled at 50 kHz) 51000 packets of 144 samples from 2018-12-28T15:57:36.408.000.

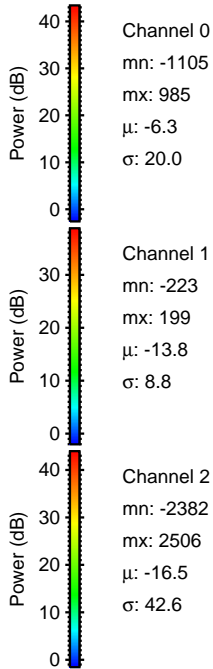
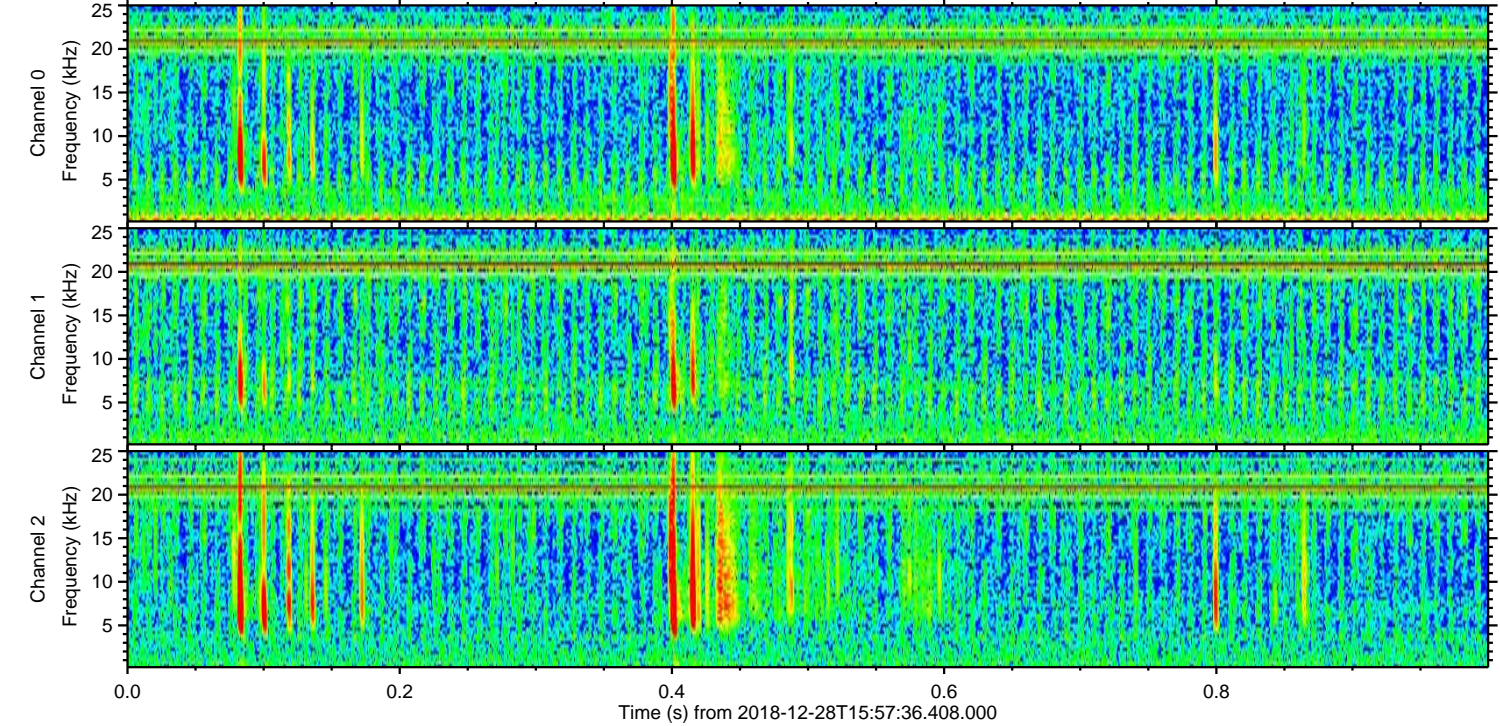
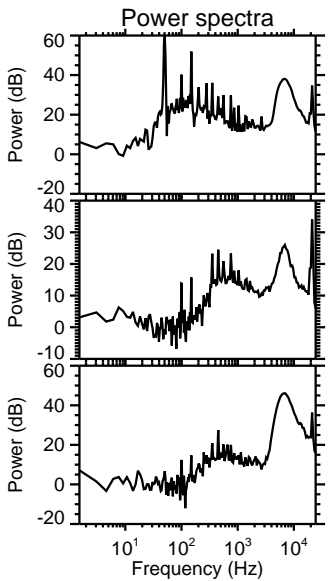
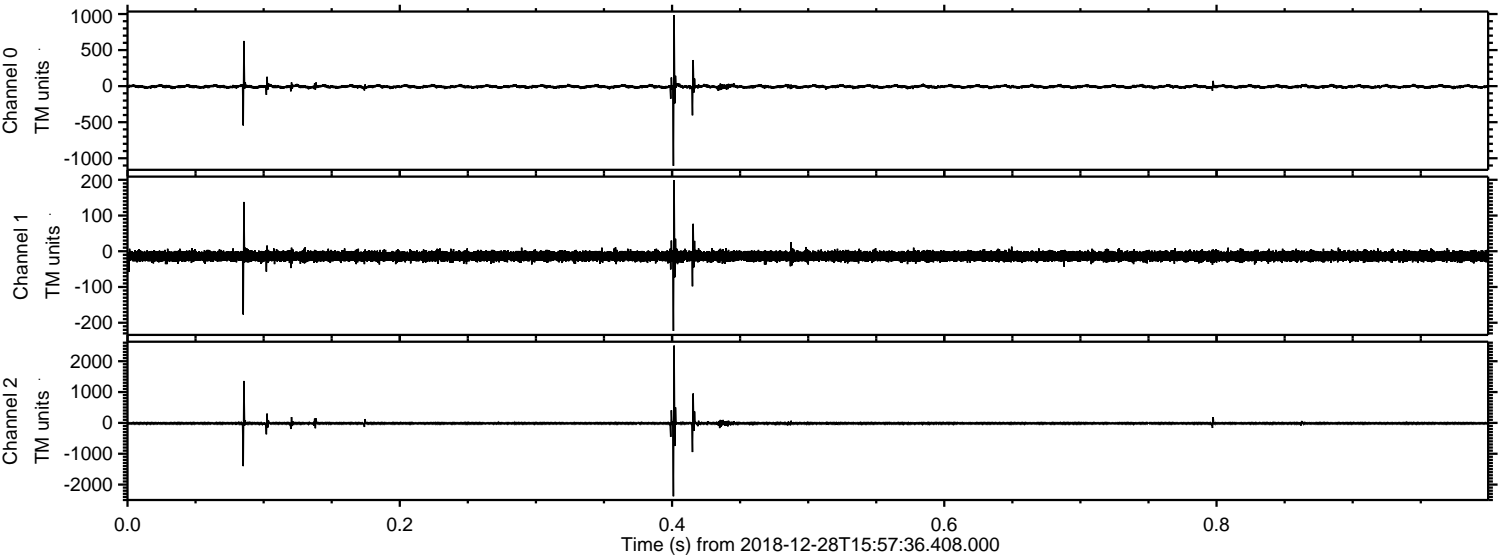
Processed Fri Dec 28 17:05:17 2018 by ELM ver.2012-10-06 from 001\_\_elm20181228\_155735\_\_dat00.bin





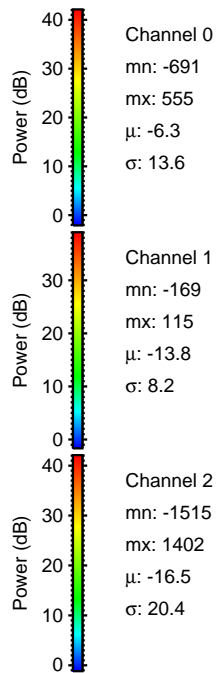
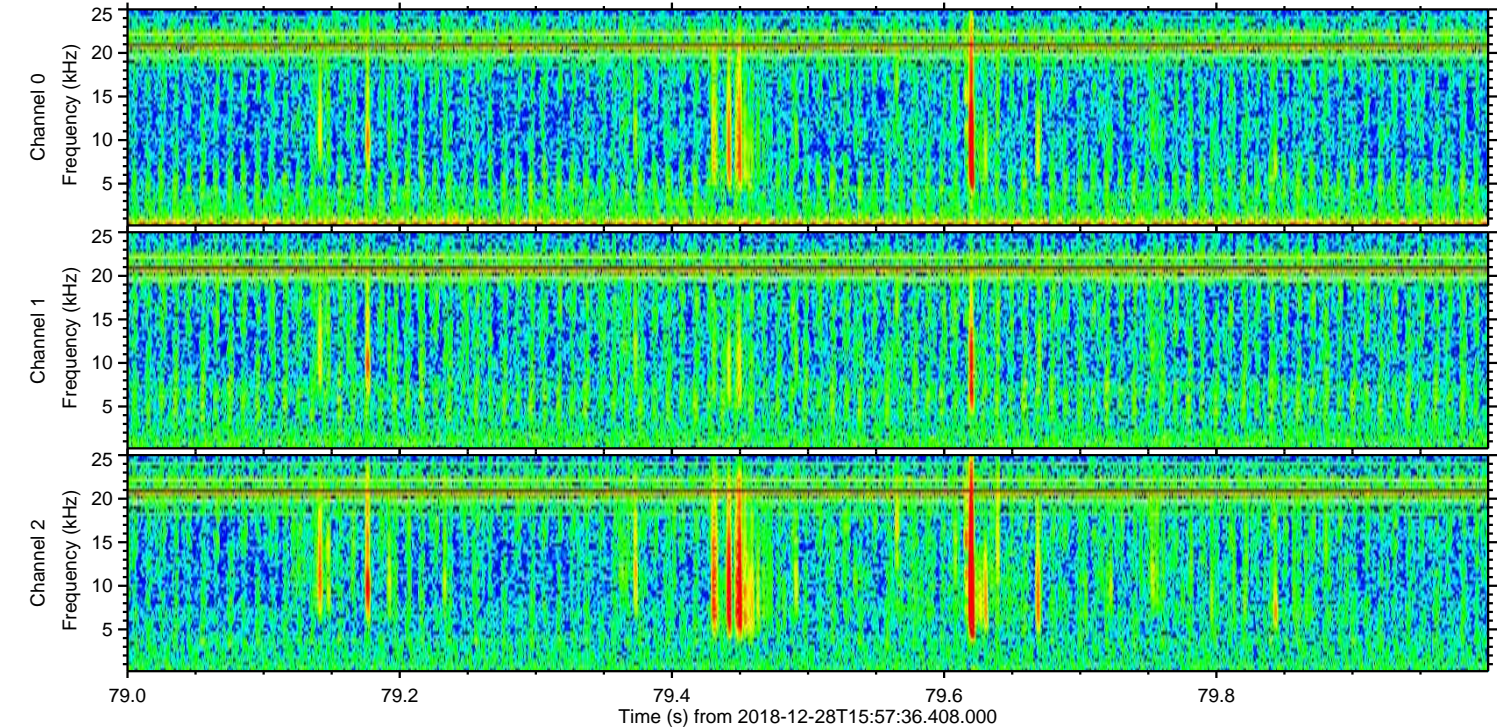
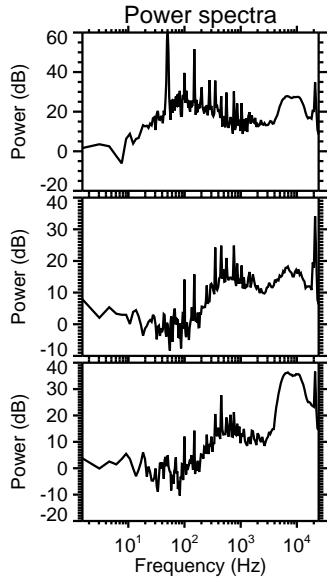
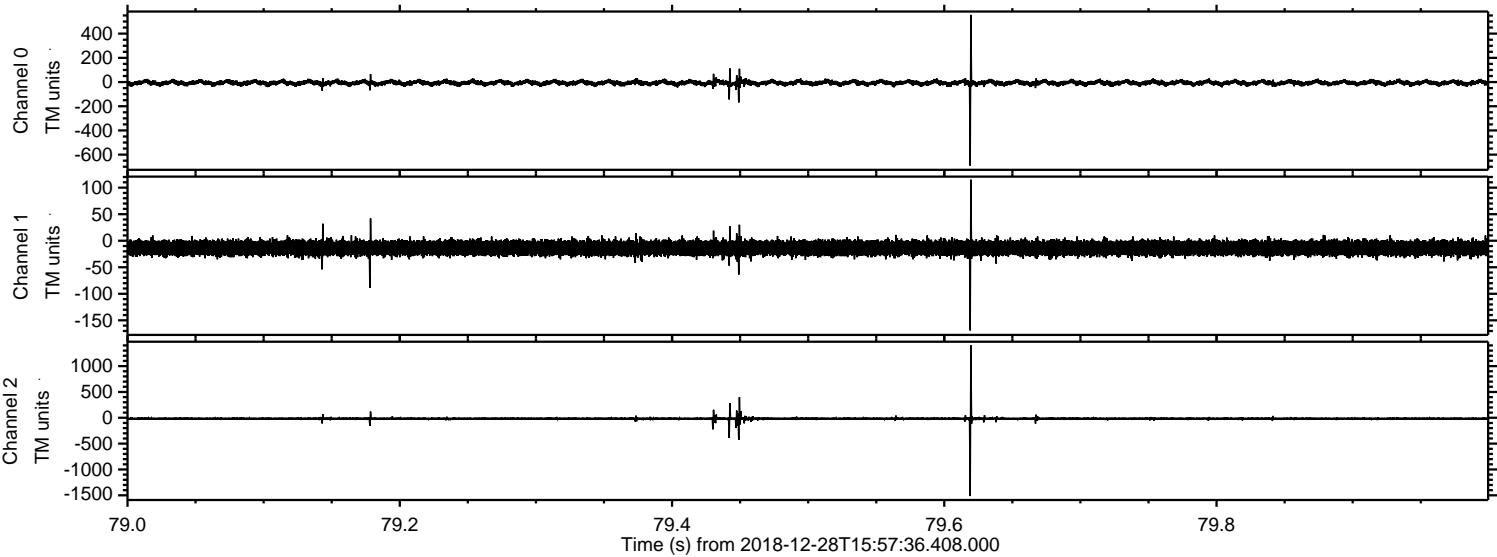
ELMAVAN 3D WAVEFORMS (Measured data sampled at 50 kHz) 51000 packets of 144 samples from 2018-12-28T15:57:36.408.000. Part 1/147

Processed Fri Dec 28 17:05:24 2018 by ELM ver.2012-10-06 from 001\_\_elm20181228\_155735\_\_dat00.bin





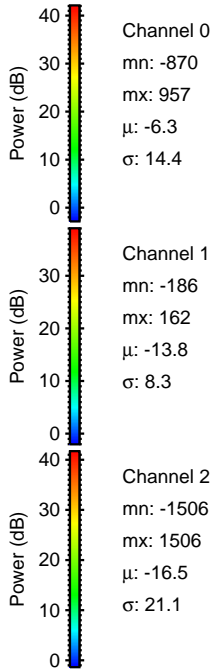
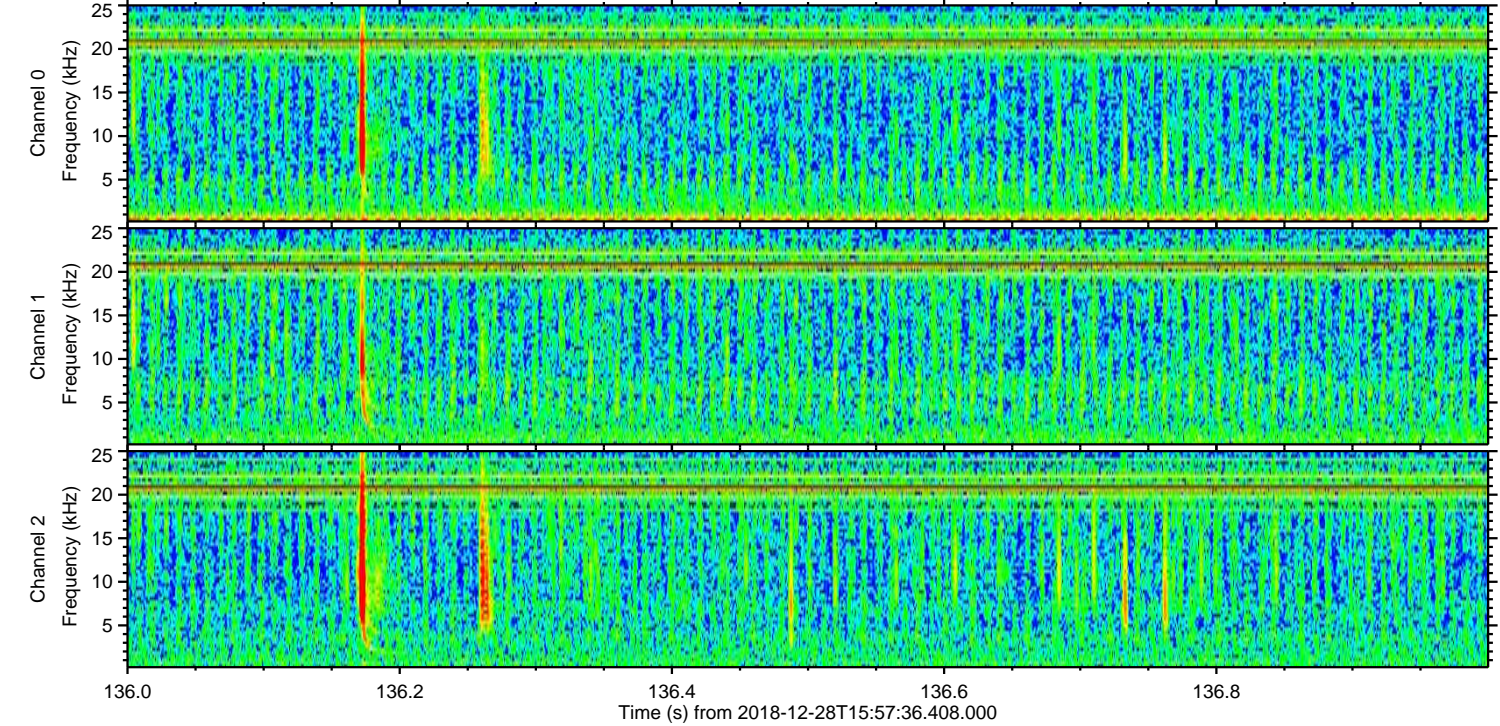
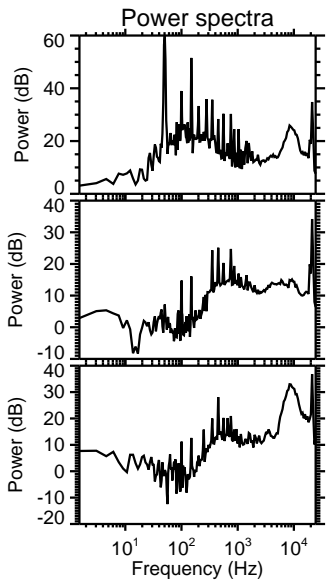
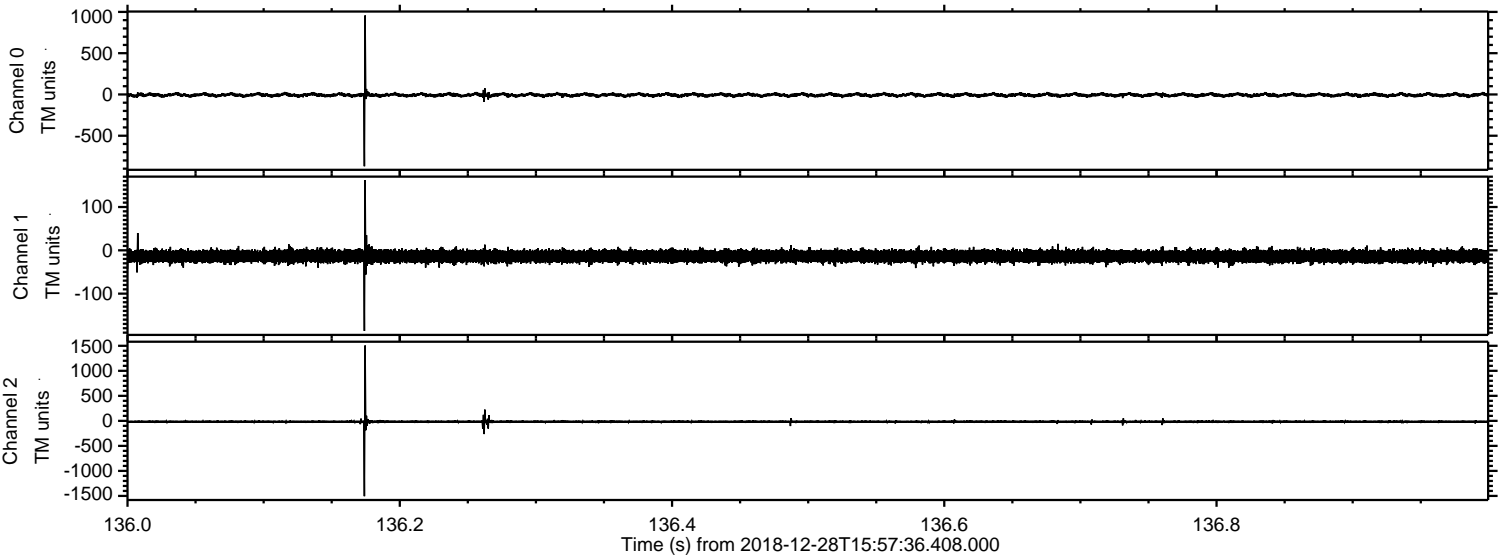
Processed Fri Dec 28 17:05:25 2018 by ELM ver.2012-10-06 from 001\_\_elm20181228\_155735\_\_dat00.bin





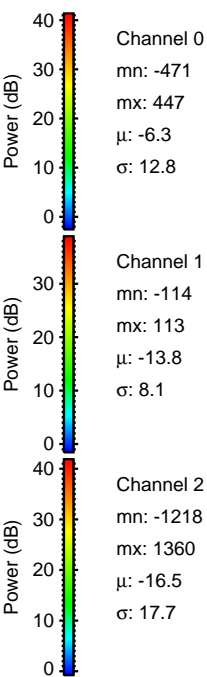
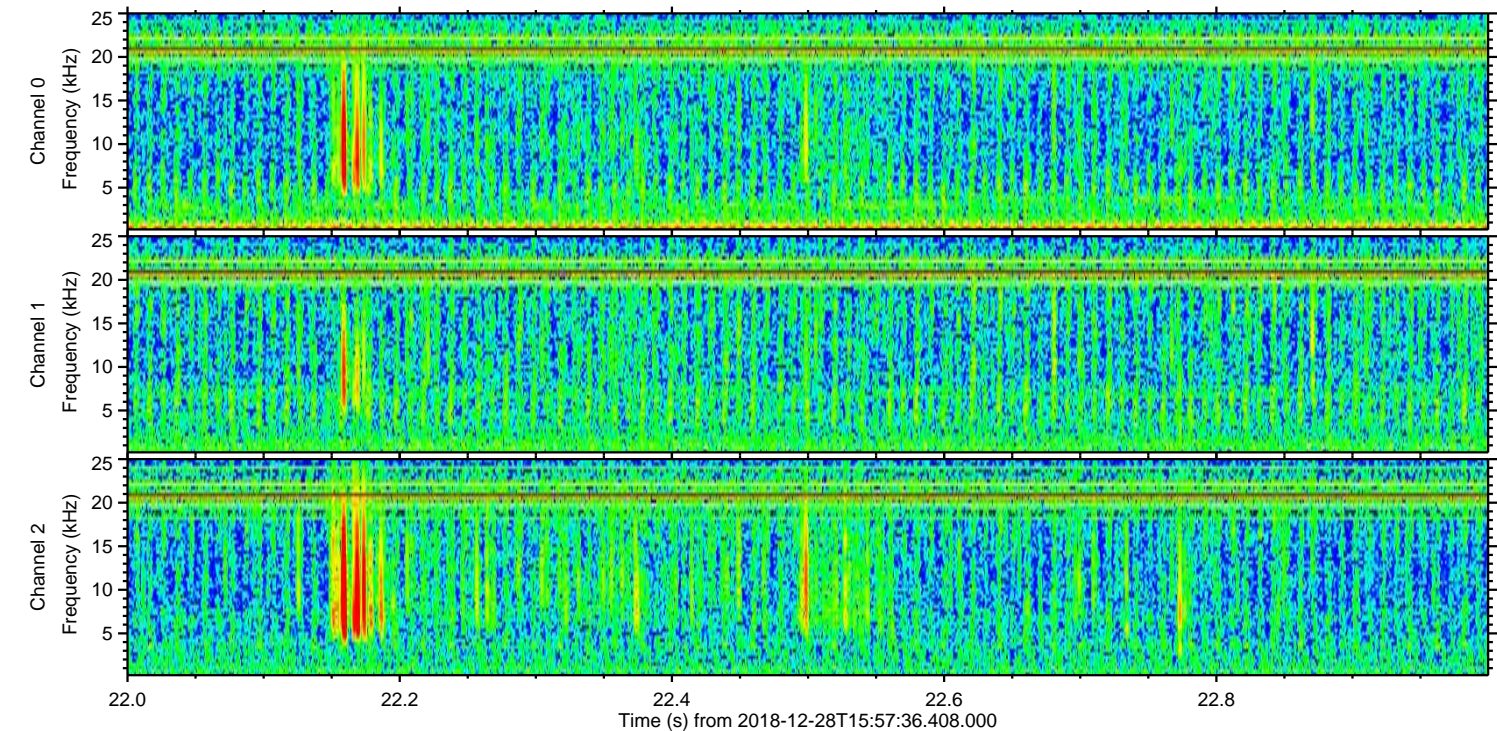
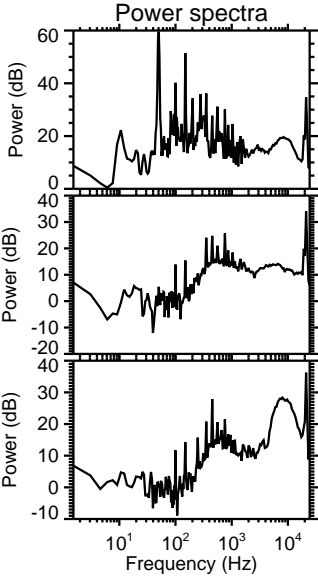
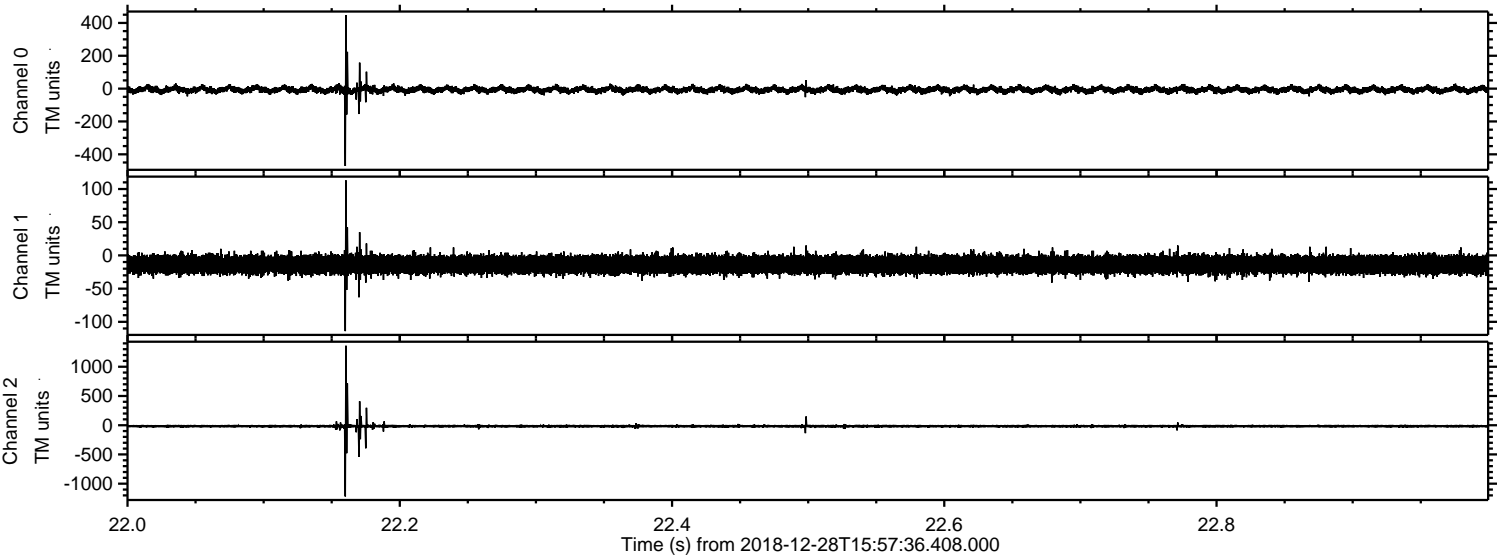
ELMAVAN 3D WAVEFORMS (Measured data sampled at 50 kHz) 51000 packets of 144 samples from 2018-12-28T15:57:36.408.000. Part 137/147

Processed Fri Dec 28 17:05:26 2018 by ELM ver.2012-10-06 from 001\_\_elm20181228\_155735\_\_dat00.bin



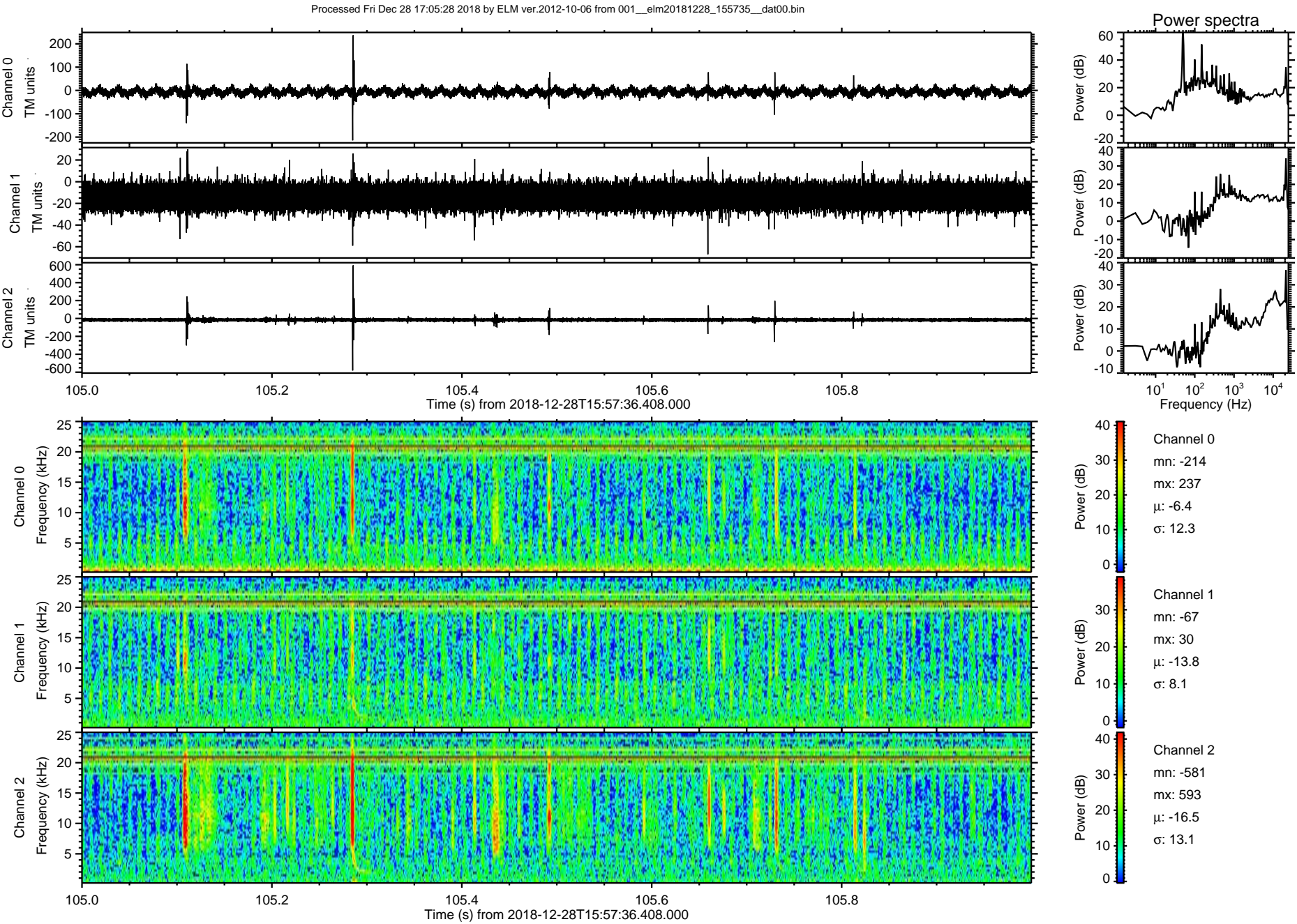


Processed Fri Dec 28 17:05:27 2018 by ELM ver.2012-10-06 from 001\_\_elm20181228\_155735\_\_dat00.bin



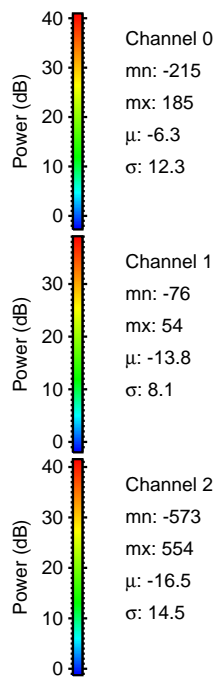
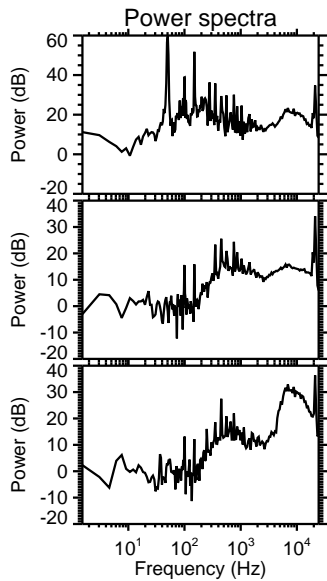
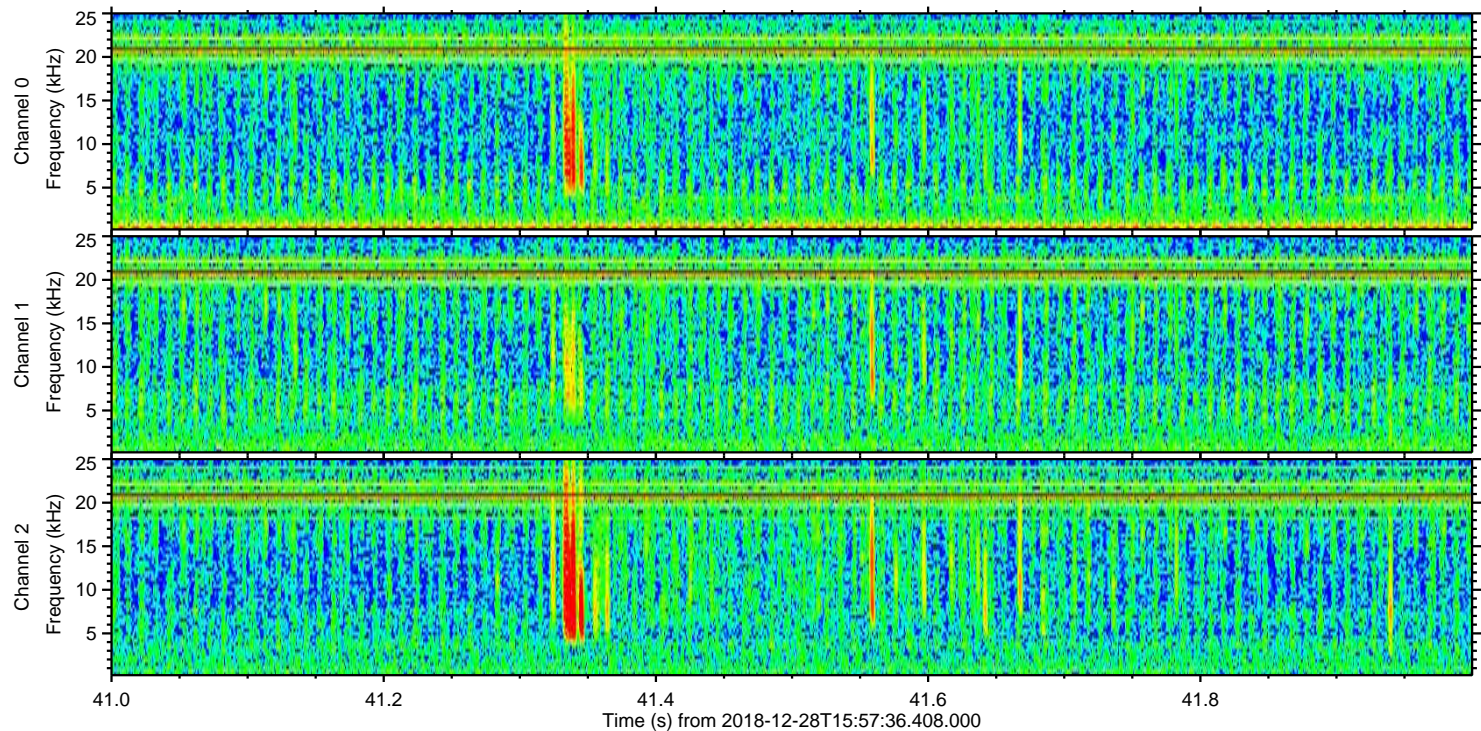
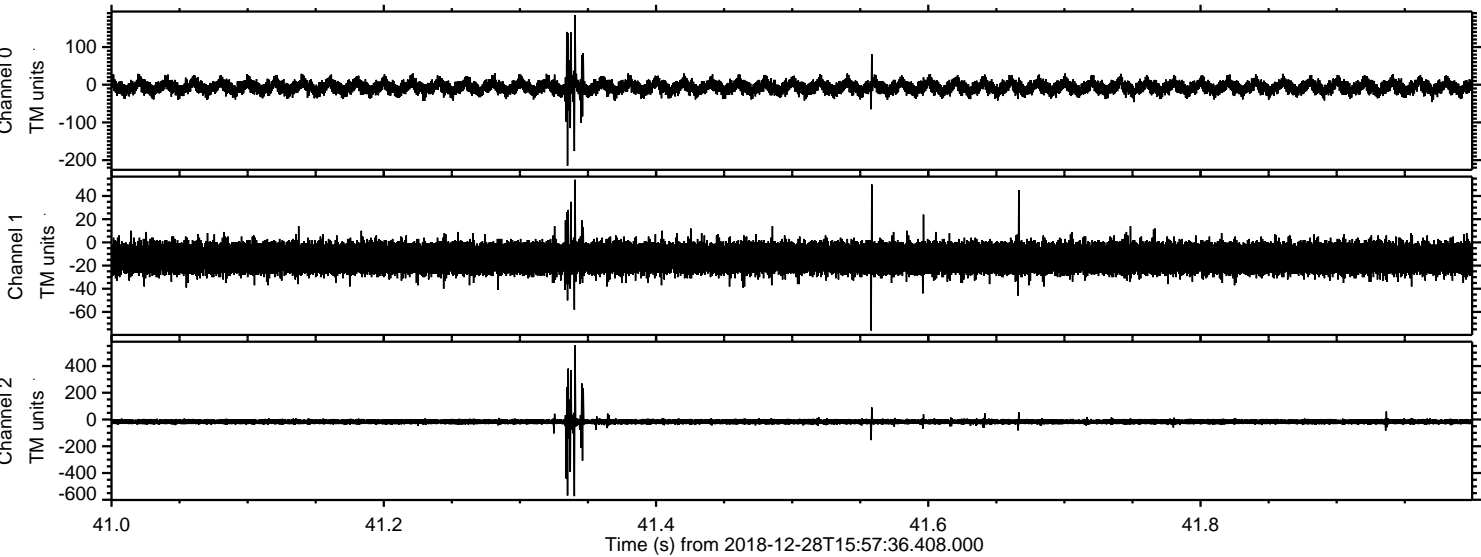


ELMAVAN 3D WAVEFORMS (Measured data sampled at 50 kHz) 51000 packets of 144 samples from 2018-12-28T15:57:36.408.000. Part 106/147



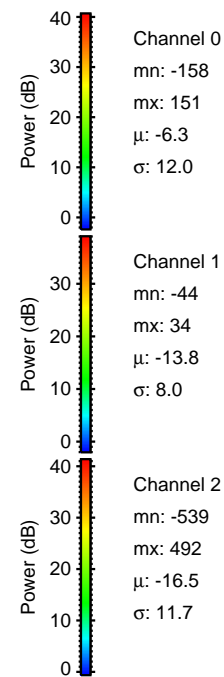
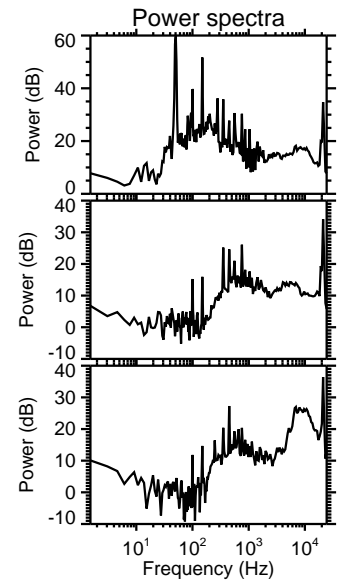
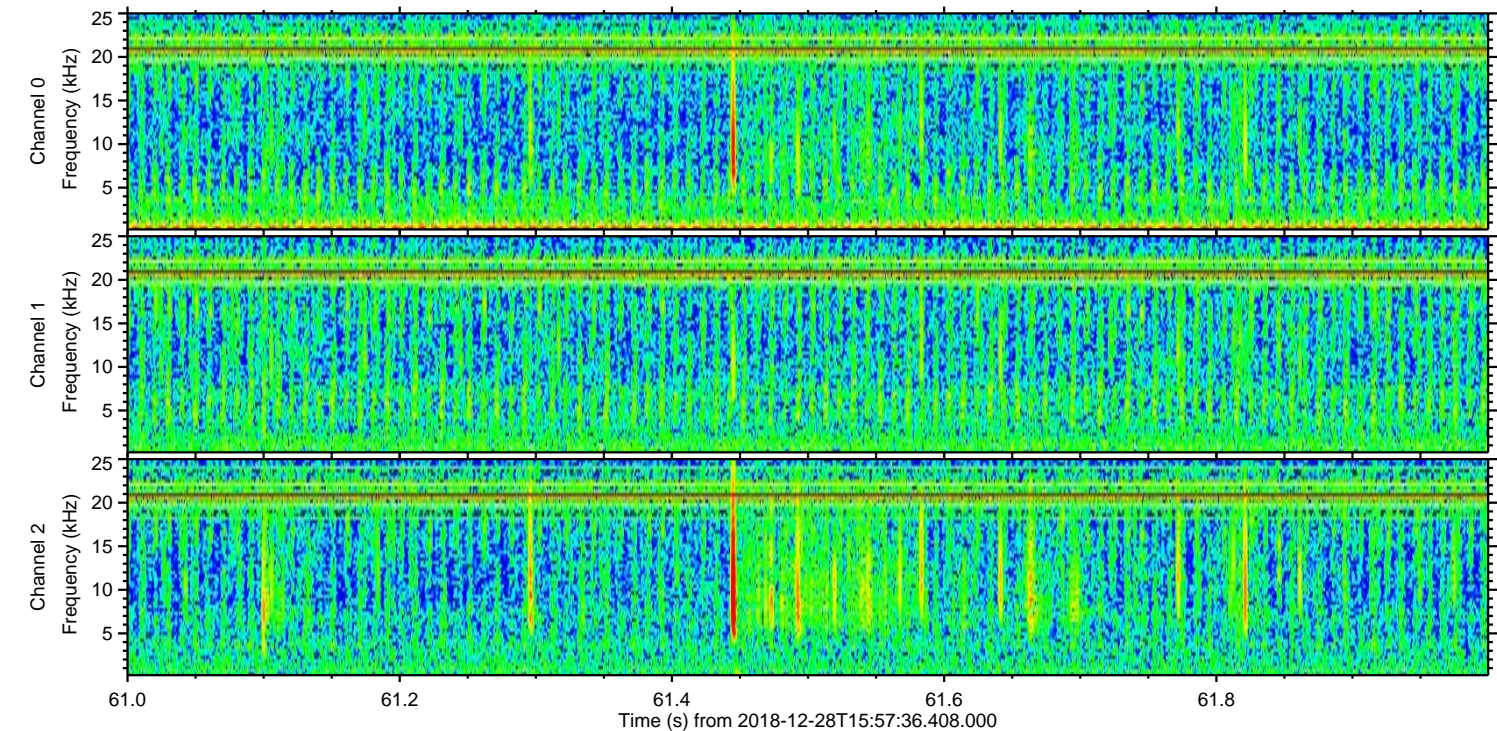
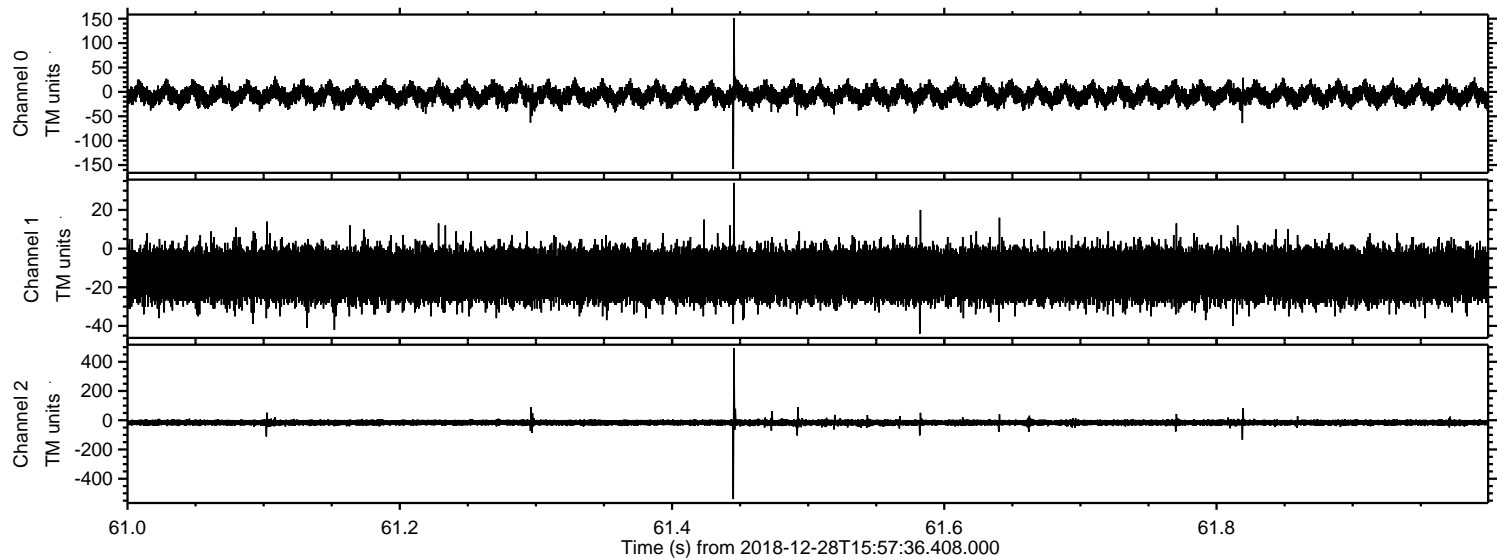


Processed Fri Dec 28 17:05:28 2018 by ELM ver.2012-10-06 from 001\_\_elm20181228\_155735\_\_dat00.bin



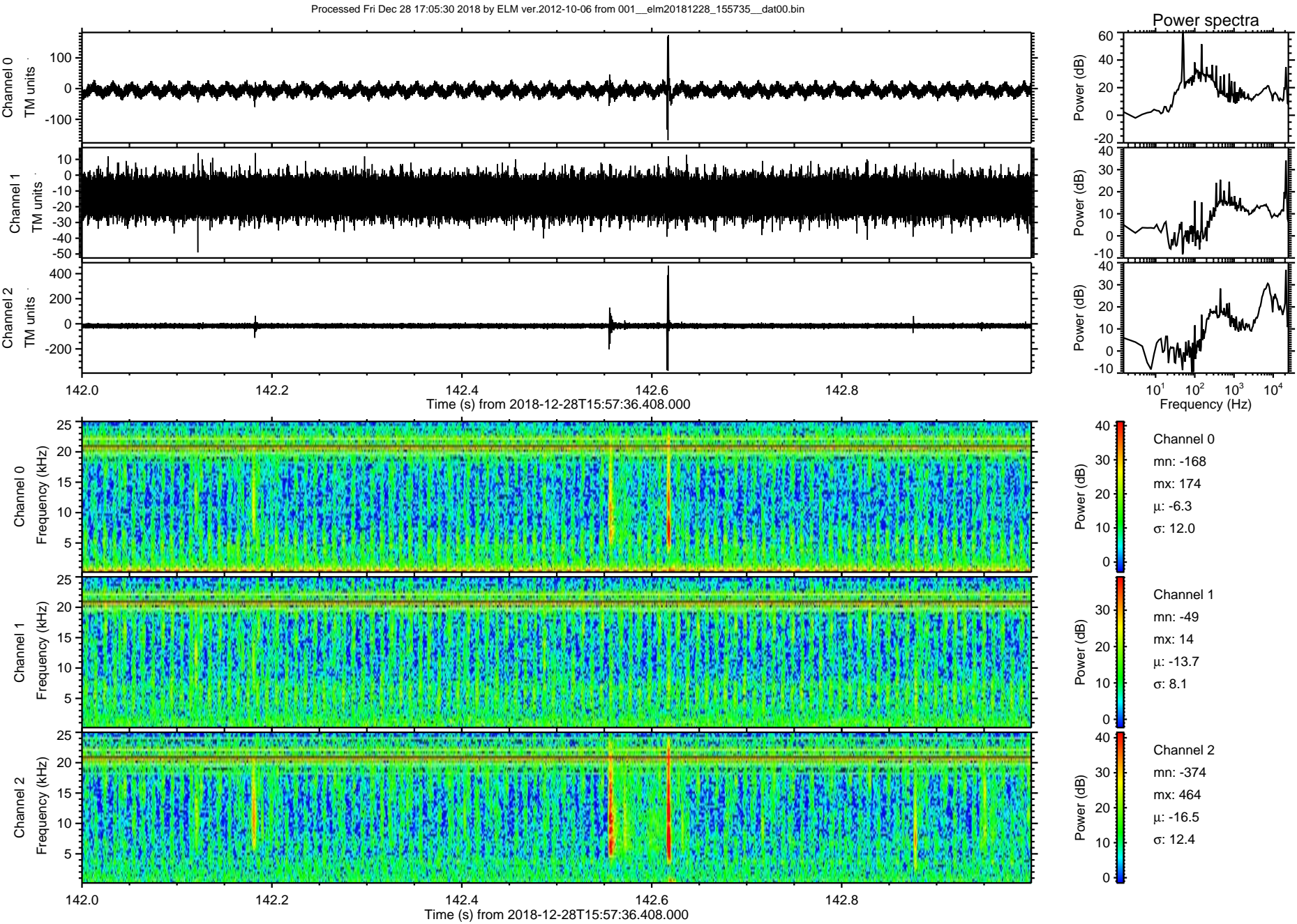


Processed Fri Dec 28 17:05:29 2018 by ELM ver.2012-10-06 from 001\_\_elm20181228\_155735\_\_dat00.bin

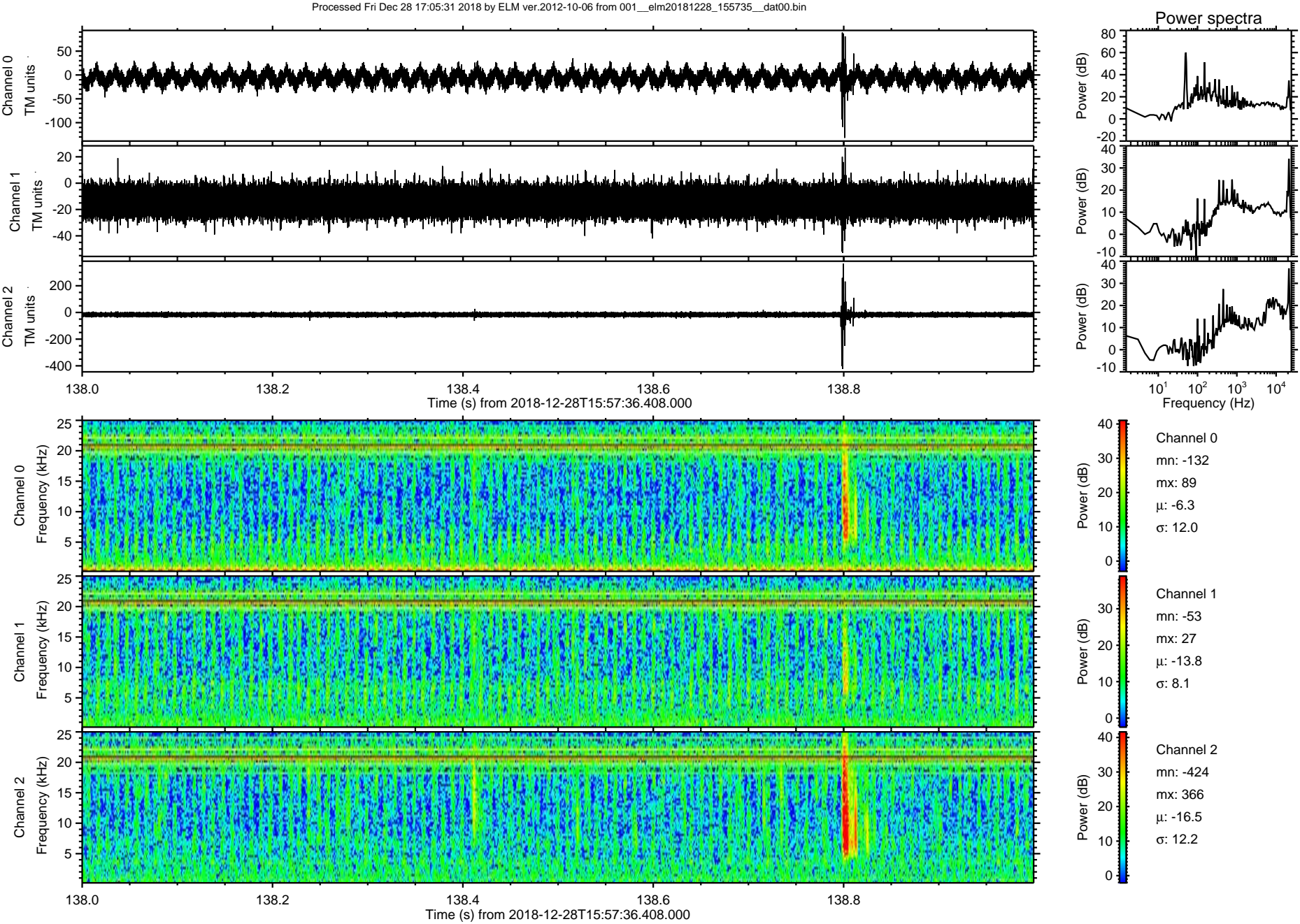




ELMAVAN 3D WAVEFORMS (Measured data sampled at 50 kHz) 51000 packets of 144 samples from 2018-12-28T15:57:36.408.000. Part 143/147









Processed Fri Dec 28 17:05:32 2018 by ELM ver.2012-10-06 from 001\_\_elm20181228\_155735\_\_dat00.bin

