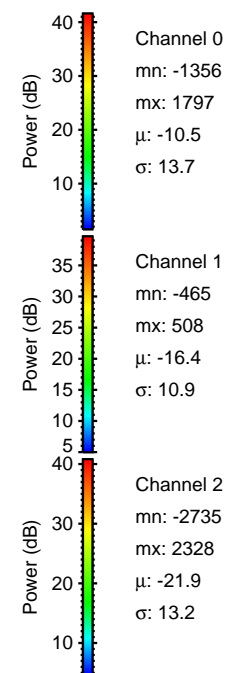
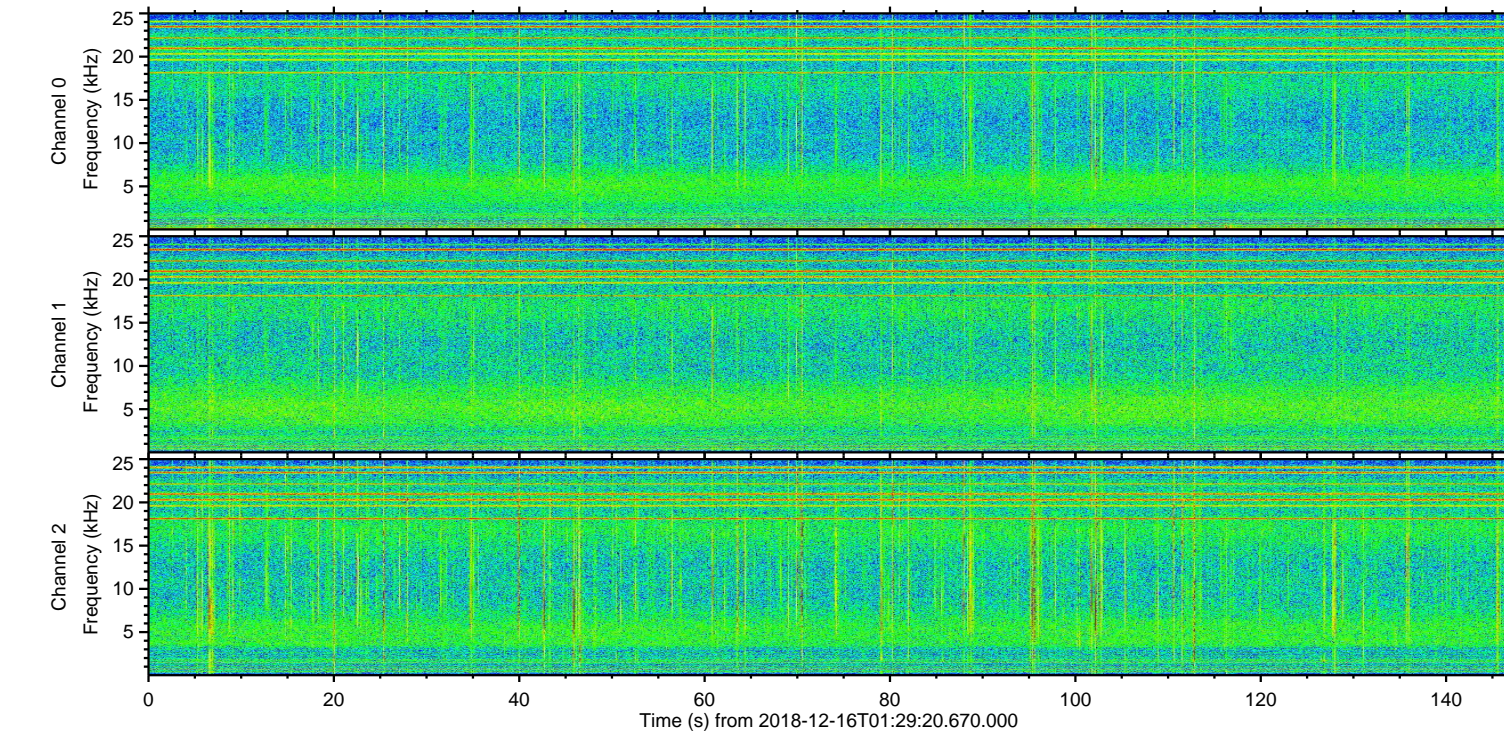
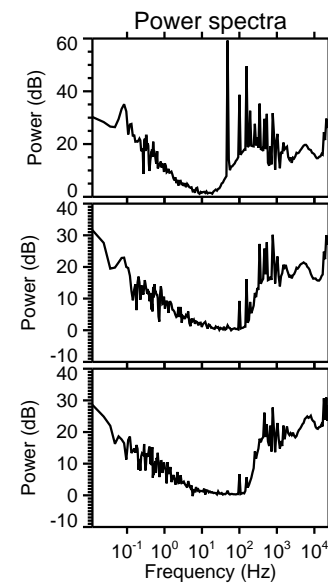
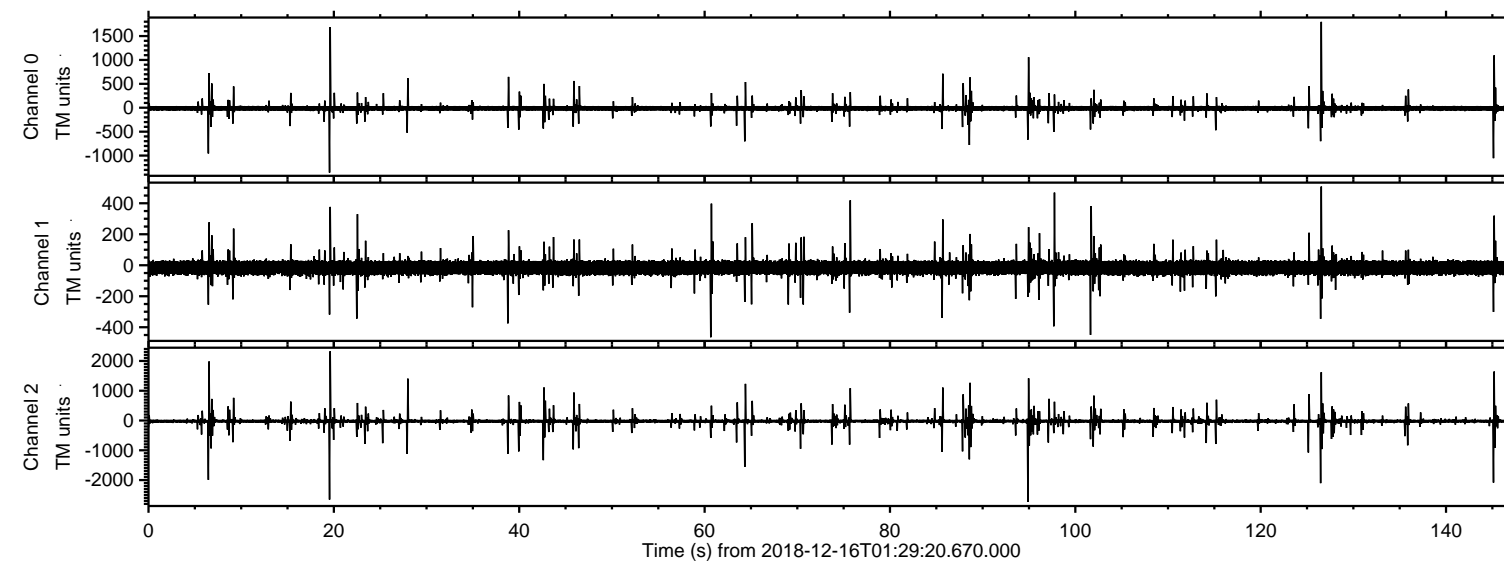
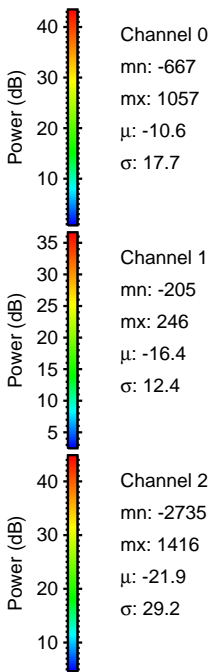
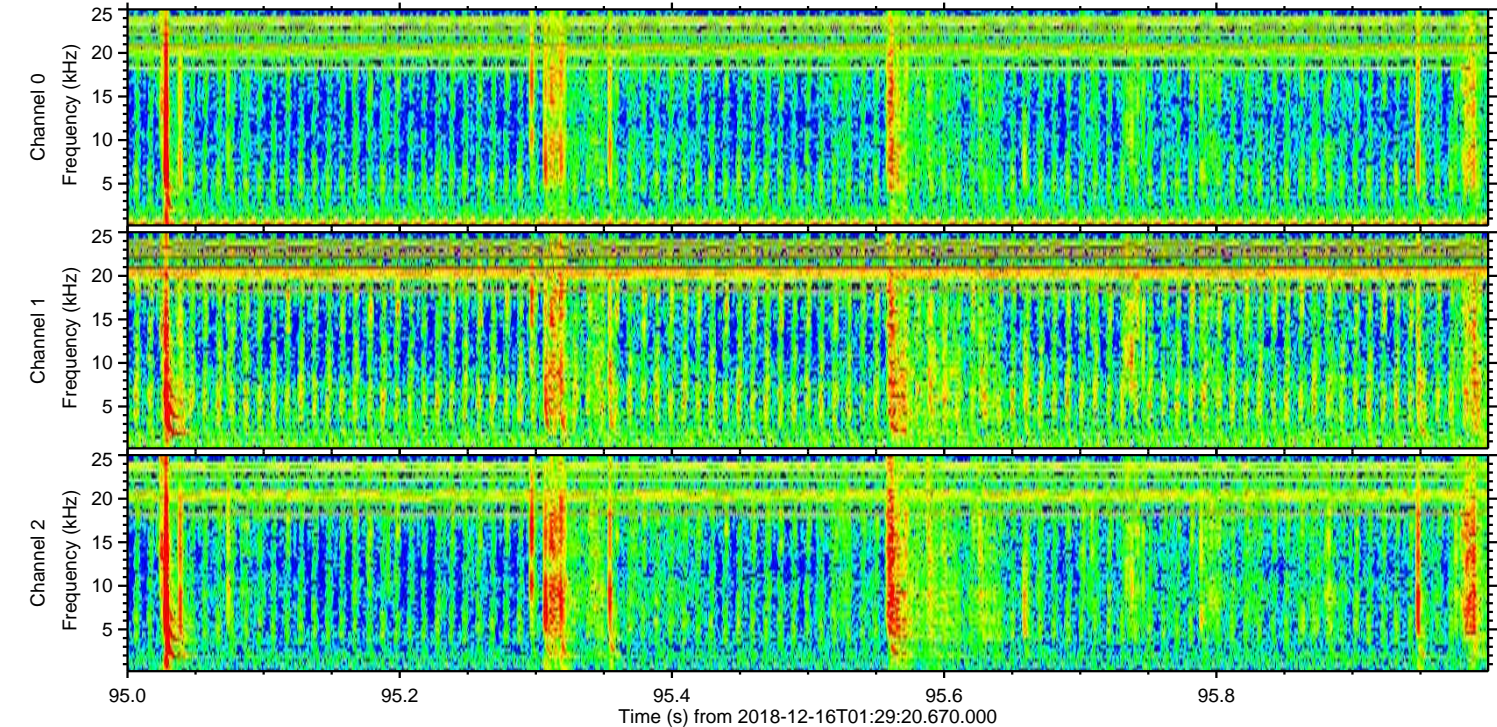
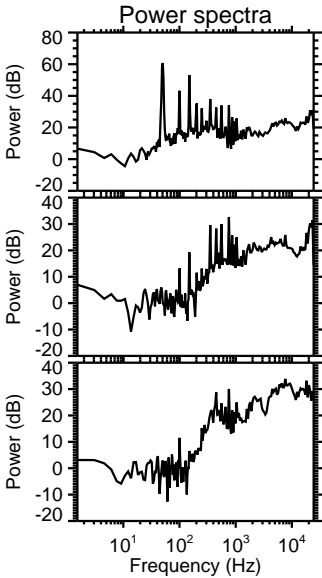
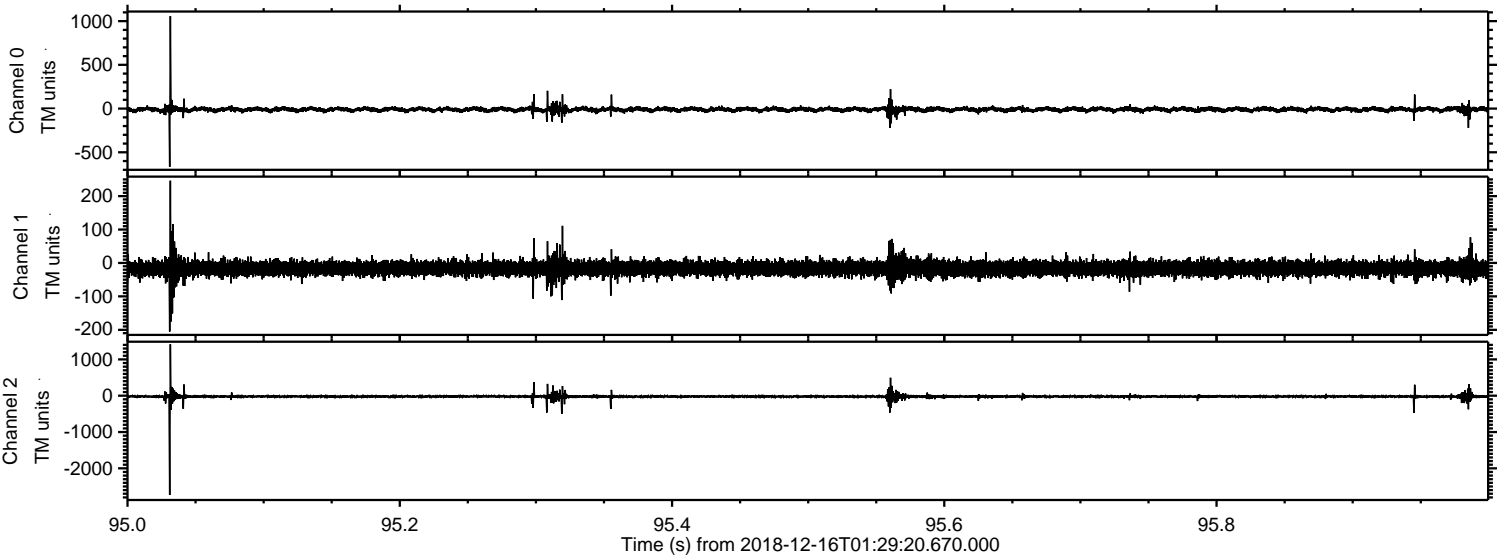


ELMAVAN 3D WAVEFORMS (Measured data sampled at 50 kHz) 51000 packets of 144 samples from 2018-12-16T01:29:20.670.000.

Processed Sun Dec 16 02:37:21 2018 by ELM ver.2012-10-06 from 001__elm20181216_012919__dat00.bin

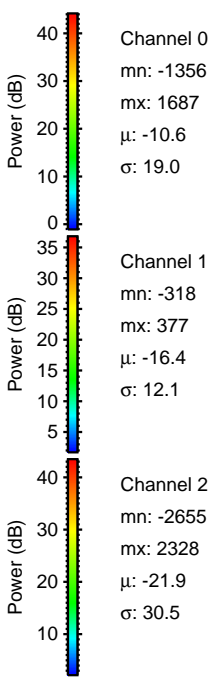
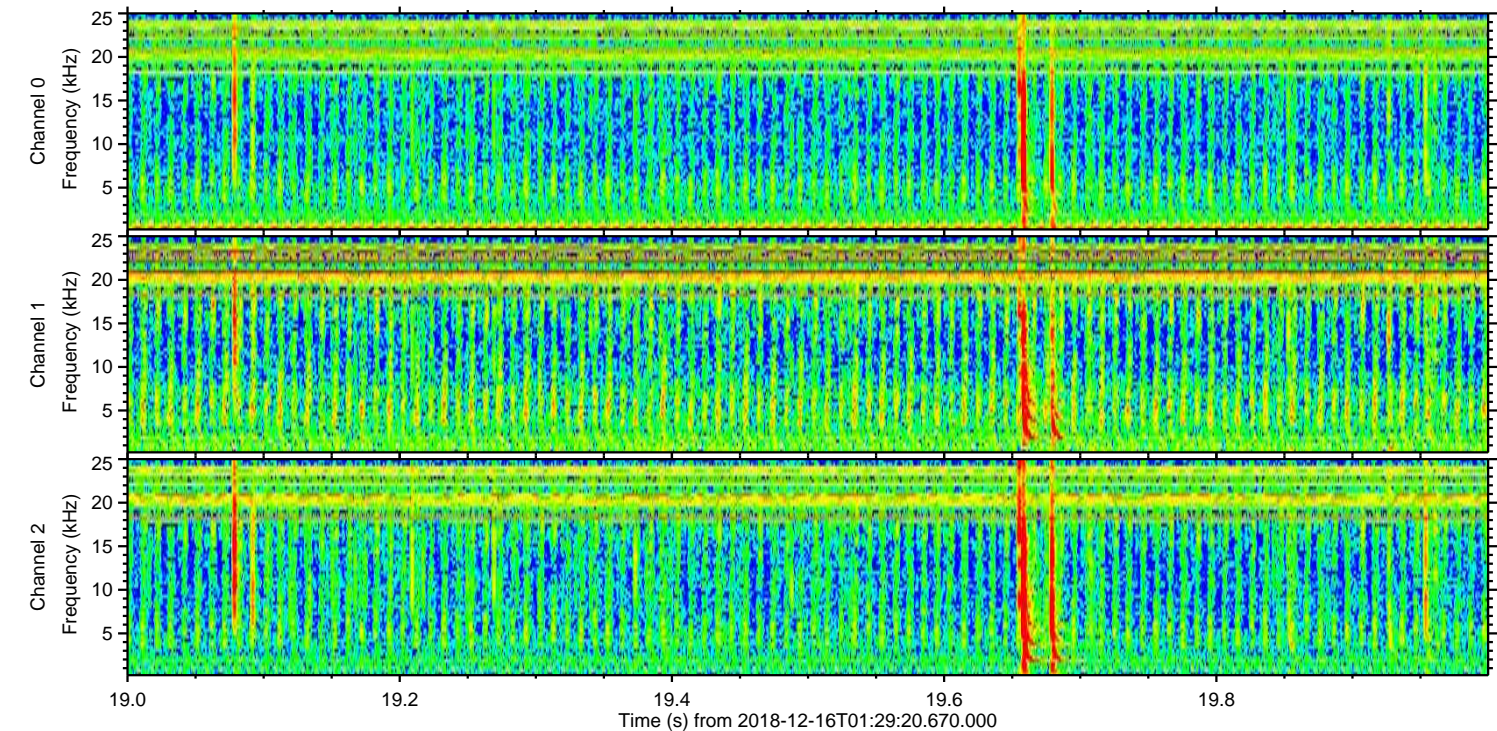
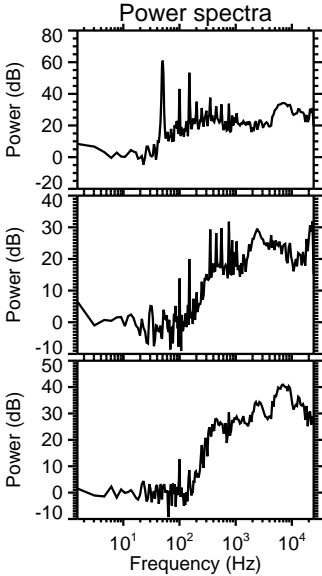
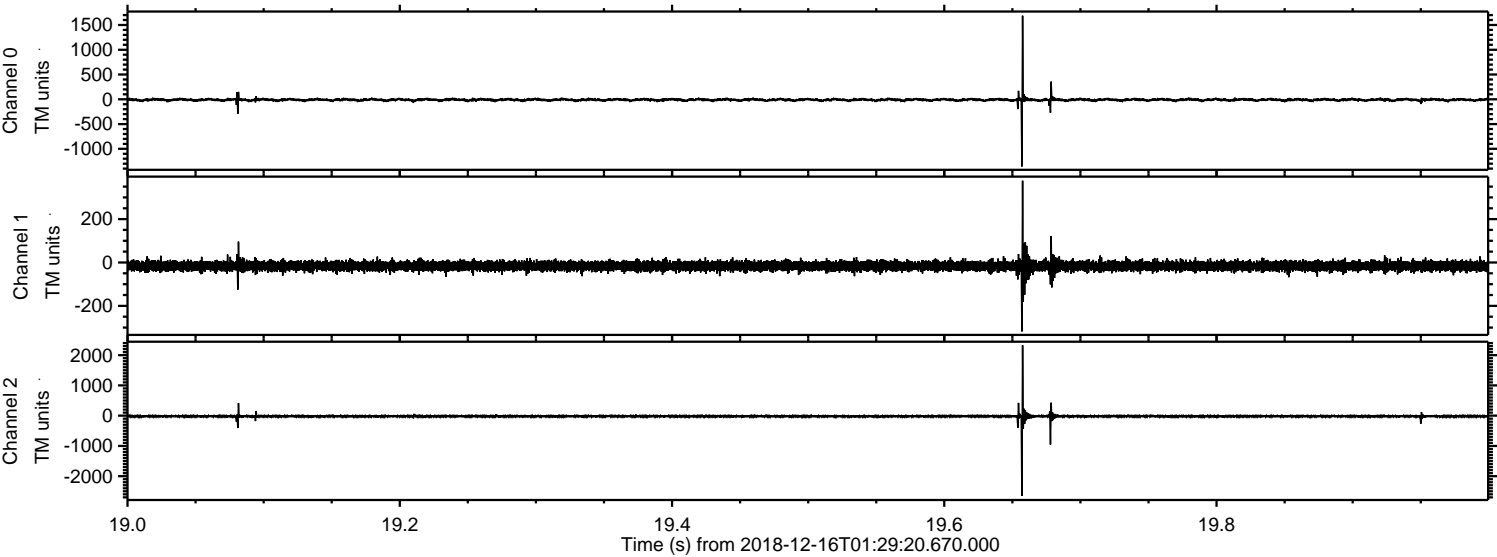


Processed Sun Dec 16 02:37:29 2018 by ELM ver.2012-10-06 from 001__elm20181216_012919__dat00.bin



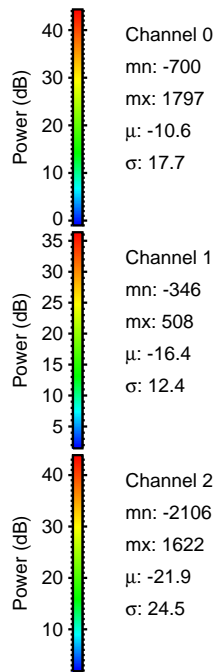
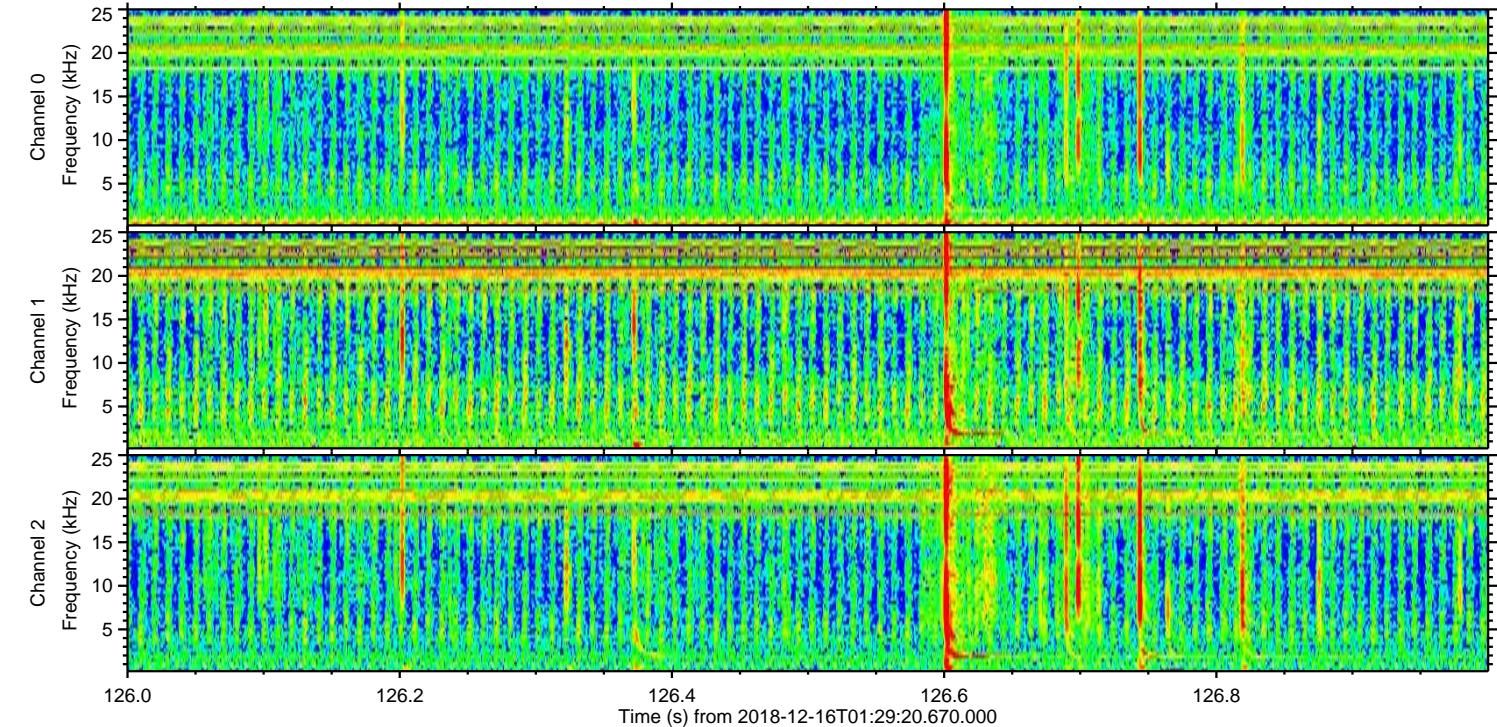
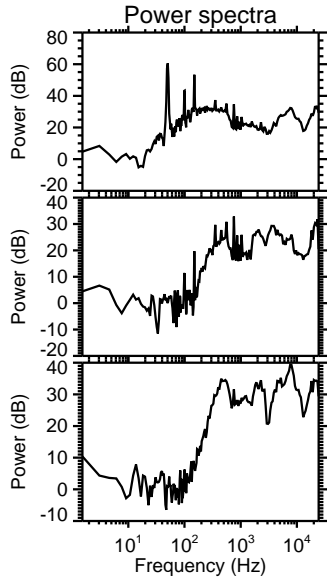
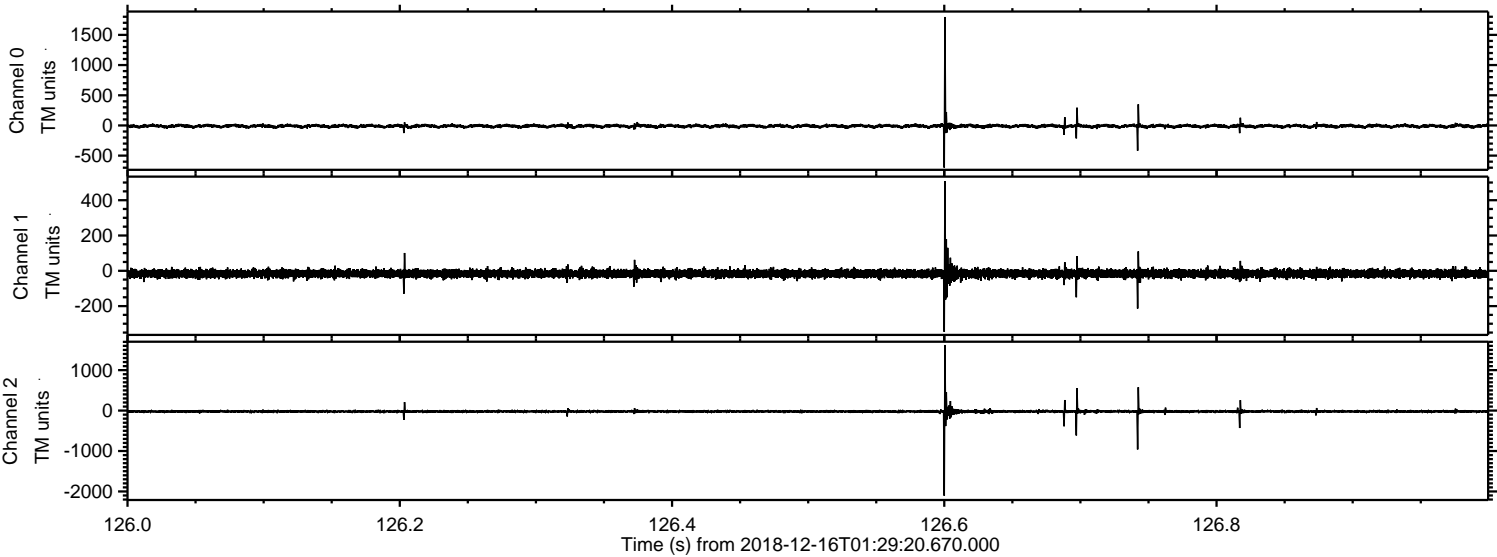
ELMAVAN 3D WAVEFORMS (Measured data sampled at 50 kHz) 51000 packets of 144 samples from 2018-12-16T01:29:20.670.000. Part 20/147

Processed Sun Dec 16 02:37:29 2018 by ELM ver.2012-10-06 from 001__elm20181216_012919__dat00.bin



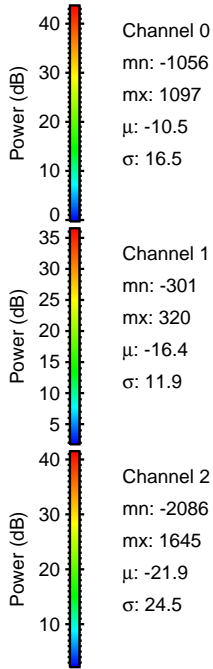
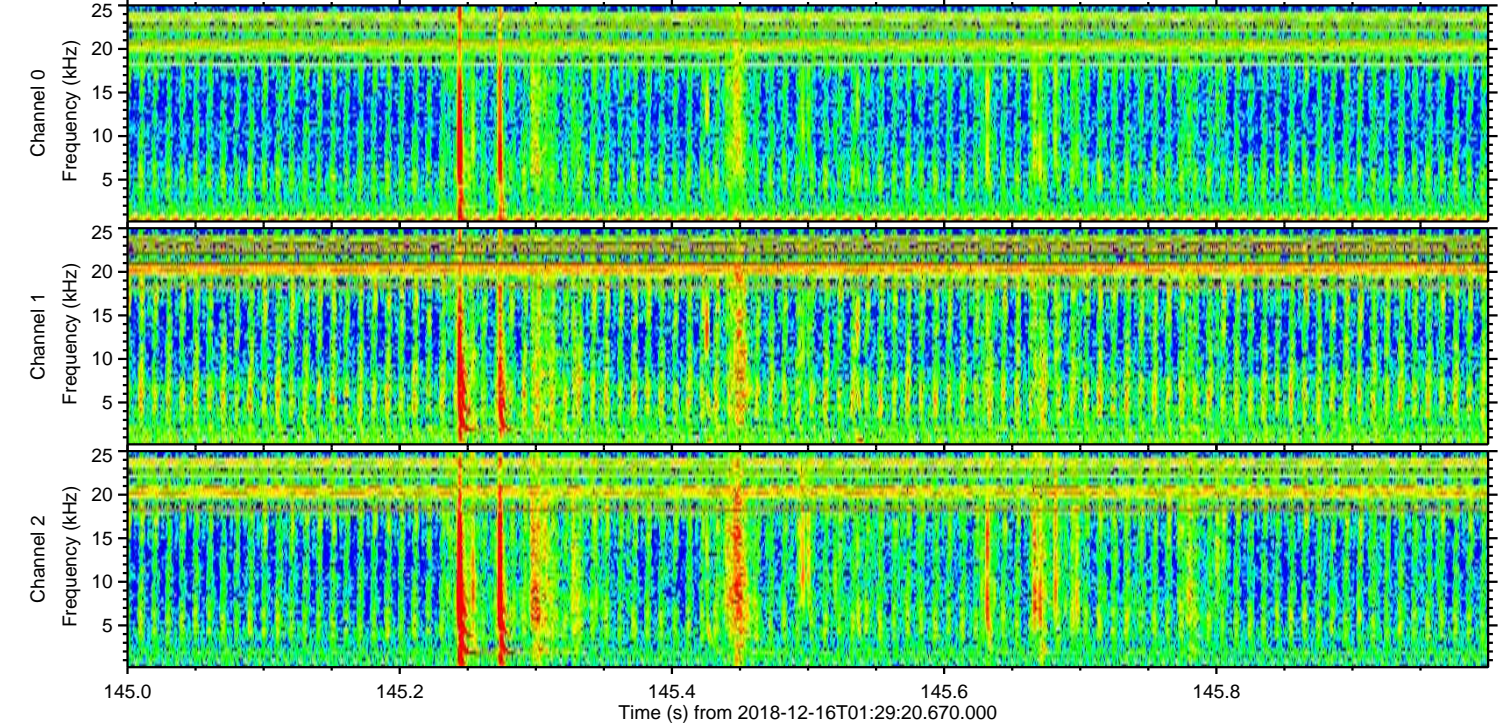
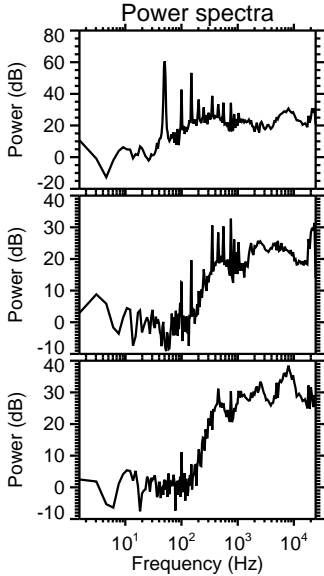
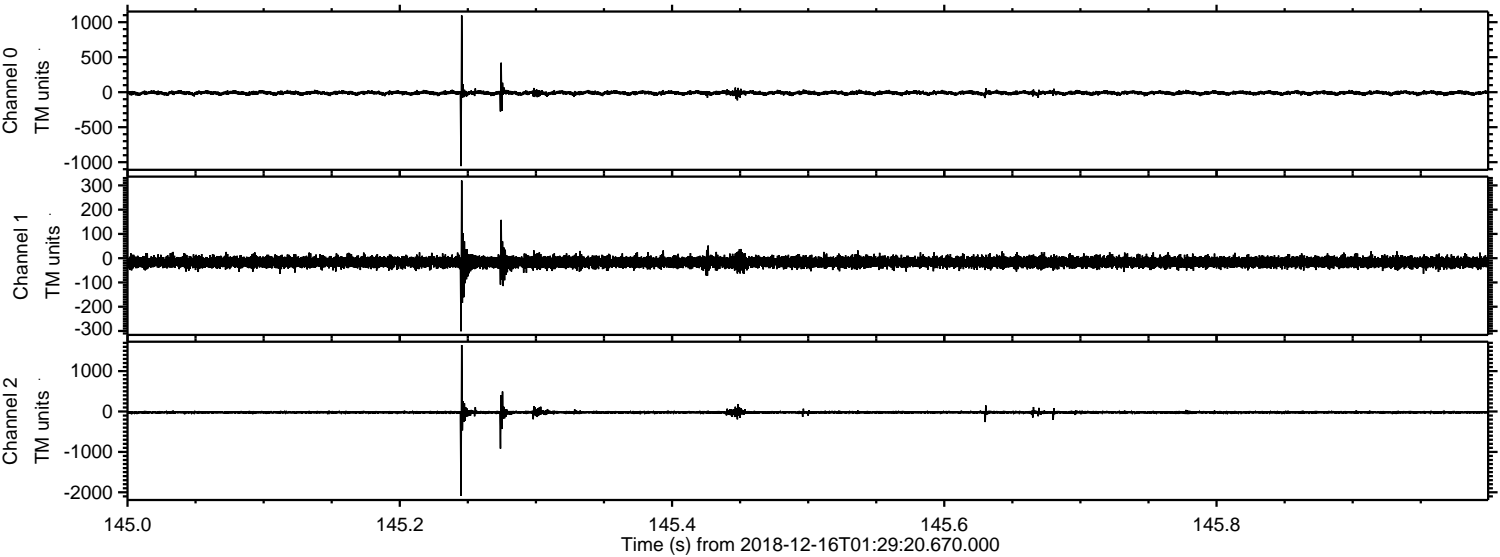
ELMAVAN 3D WAVEFORMS (Measured data sampled at 50 kHz) 51000 packets of 144 samples from 2018-12-16T01:29:20.670.000. Part 127/147

Processed Sun Dec 16 02:37:30 2018 by ELM ver.2012-10-06 from 001__elm20181216_012919__dat00.bin

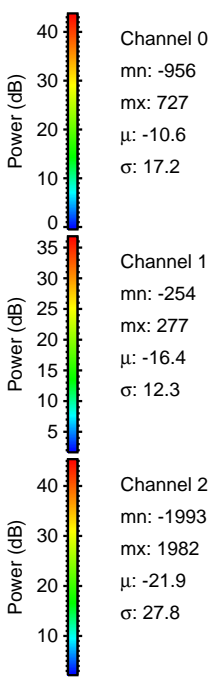
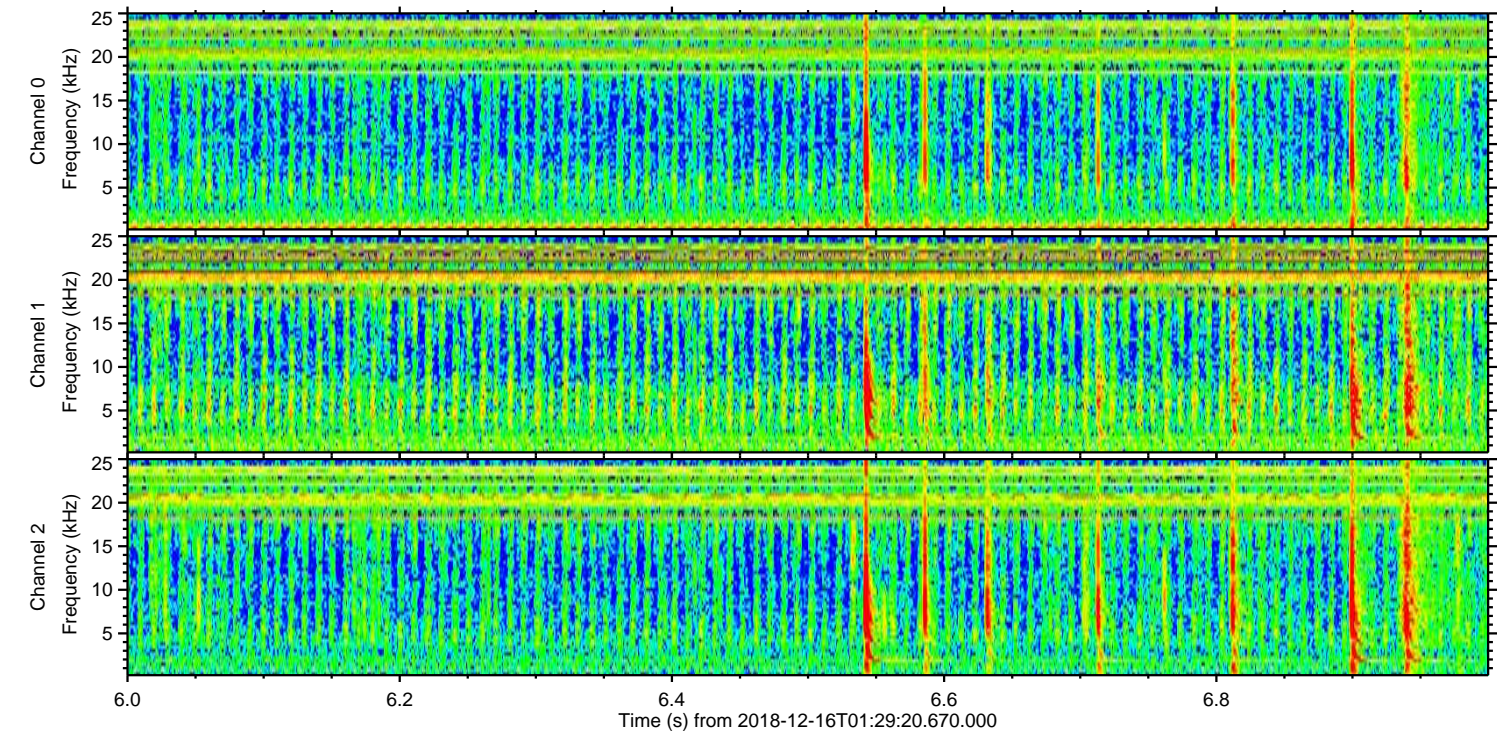
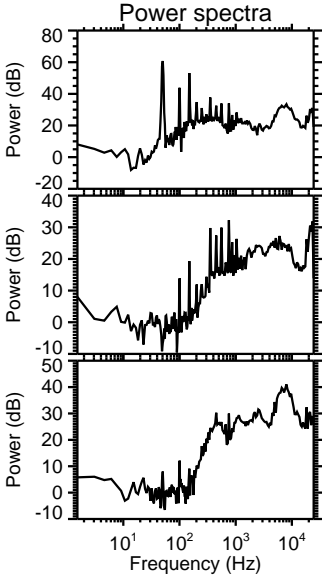
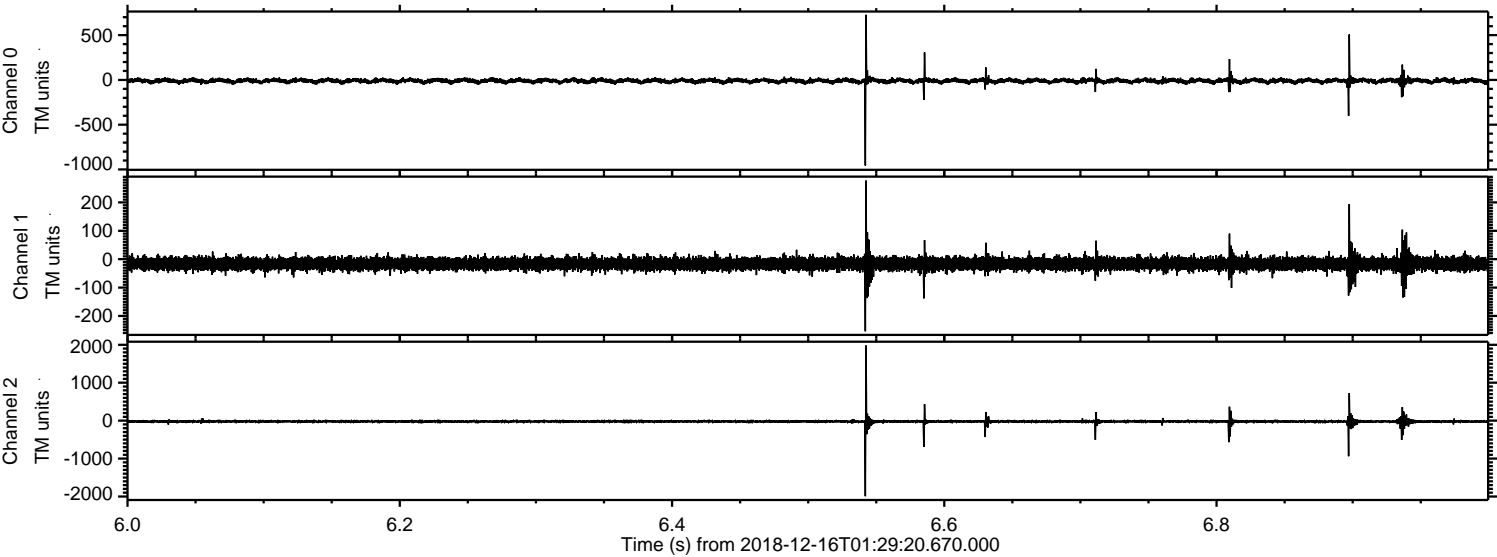


ELMAVAN 3D WAVEFORMS (Measured data sampled at 50 kHz) 51000 packets of 144 samples from 2018-12-16T01:29:20.670.000. Part 146/147

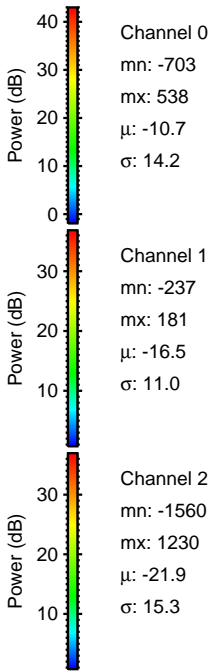
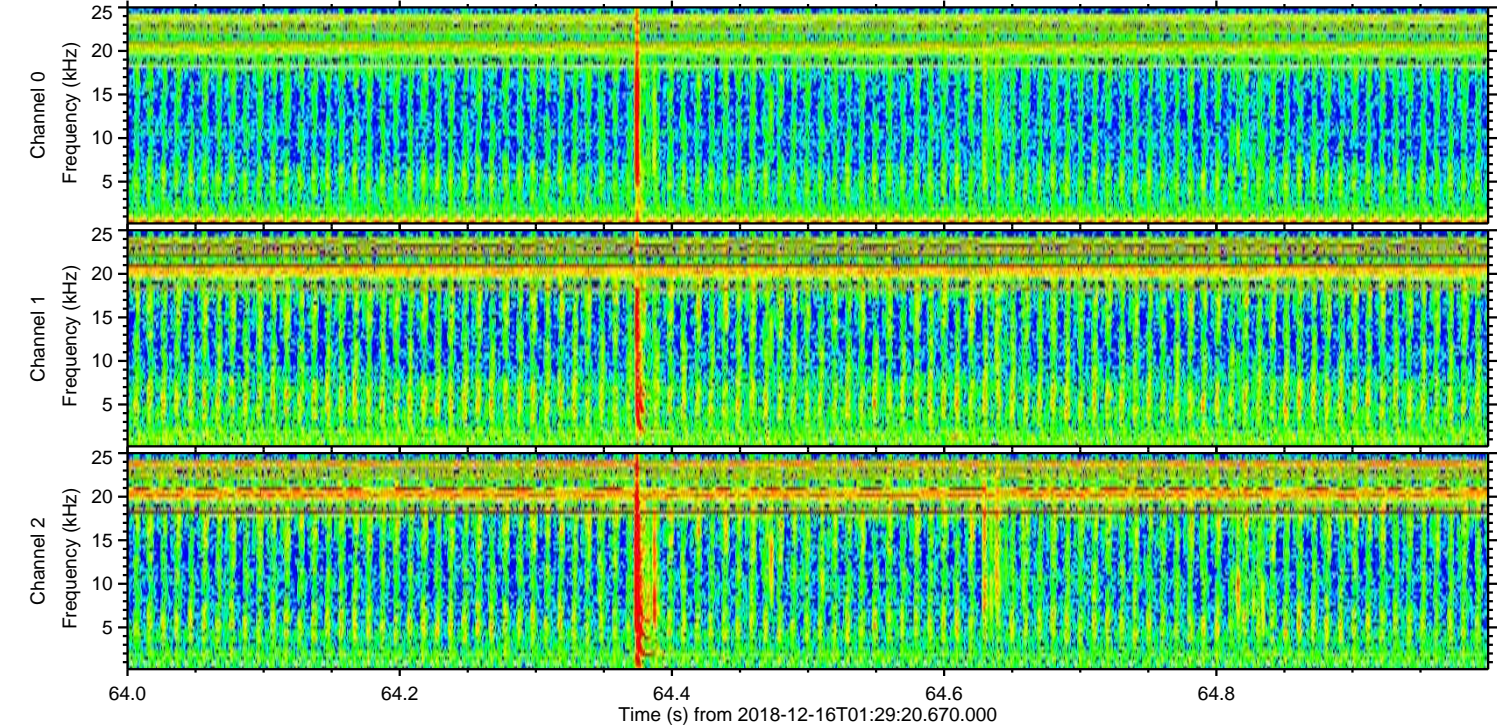
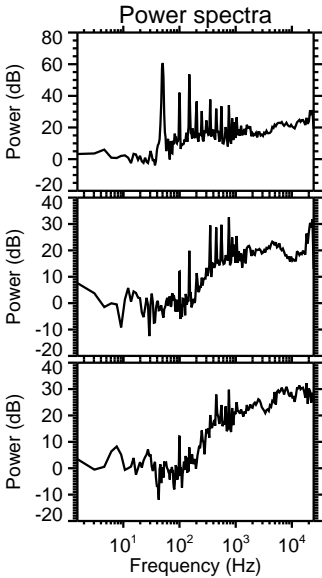
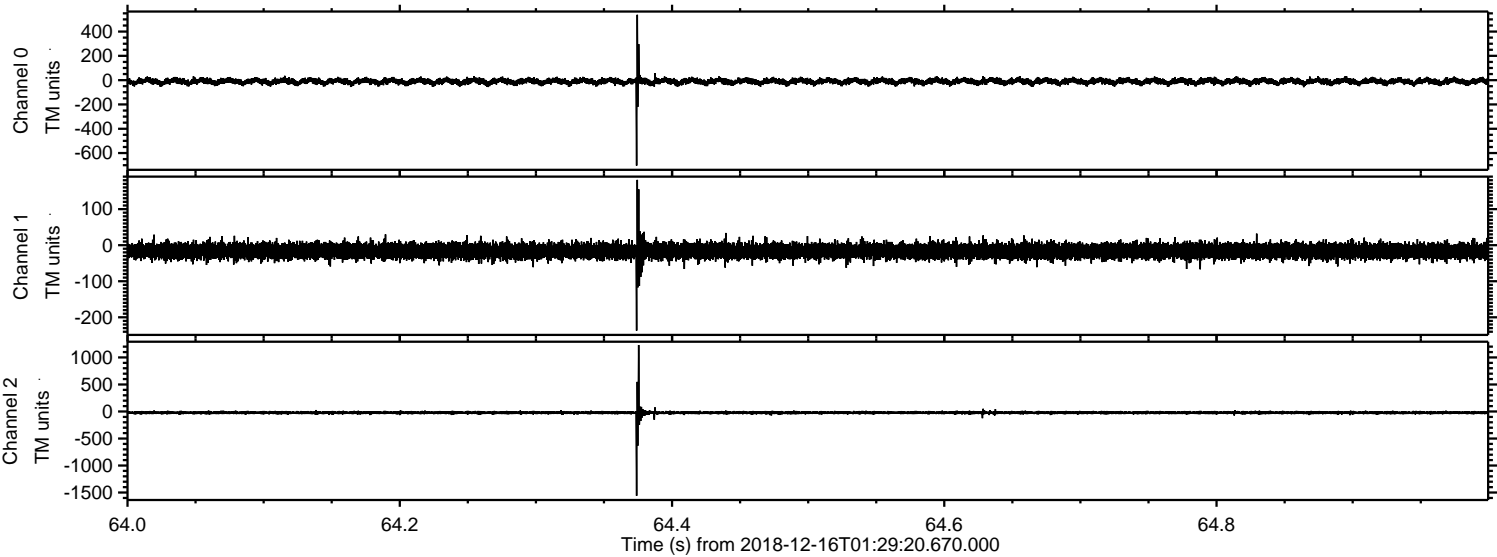
Processed Sun Dec 16 02:37:31 2018 by ELM ver.2012-10-06 from 001__elm20181216_012919__dat00.bin



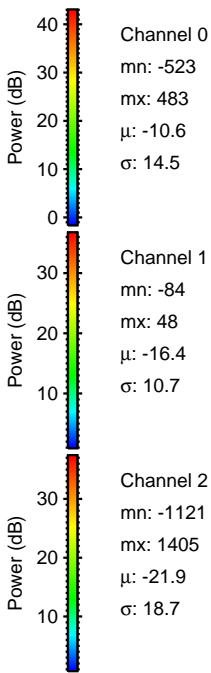
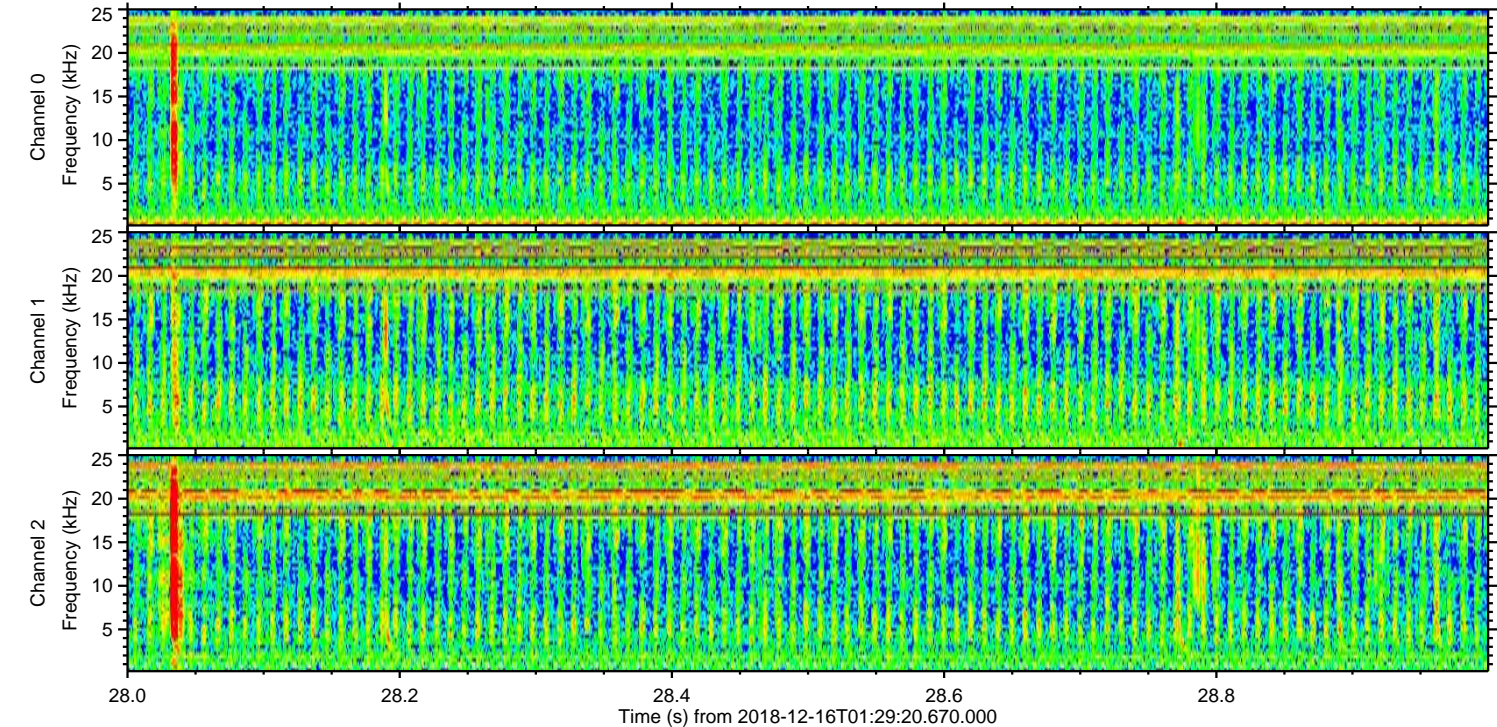
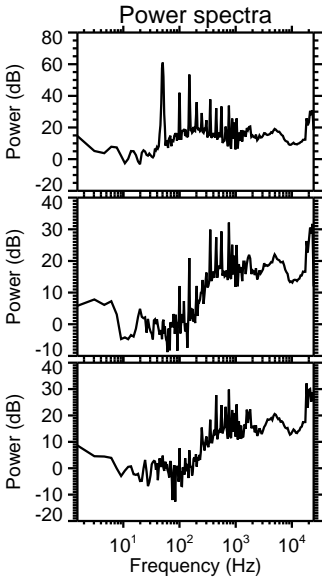
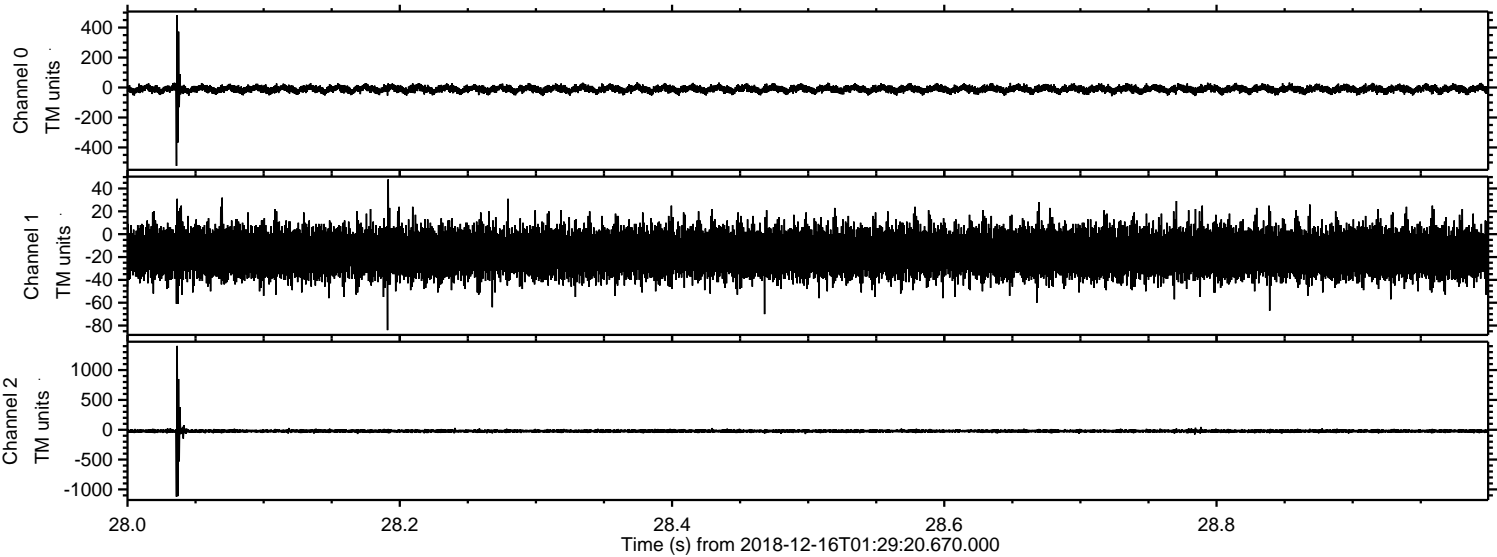
Processed Sun Dec 16 02:37:32 2018 by ELM ver.2012-10-06 from 001__elm20181216_012919__dat00.bin



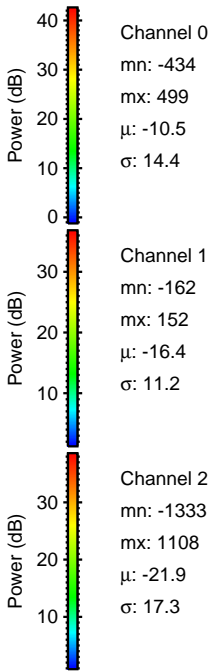
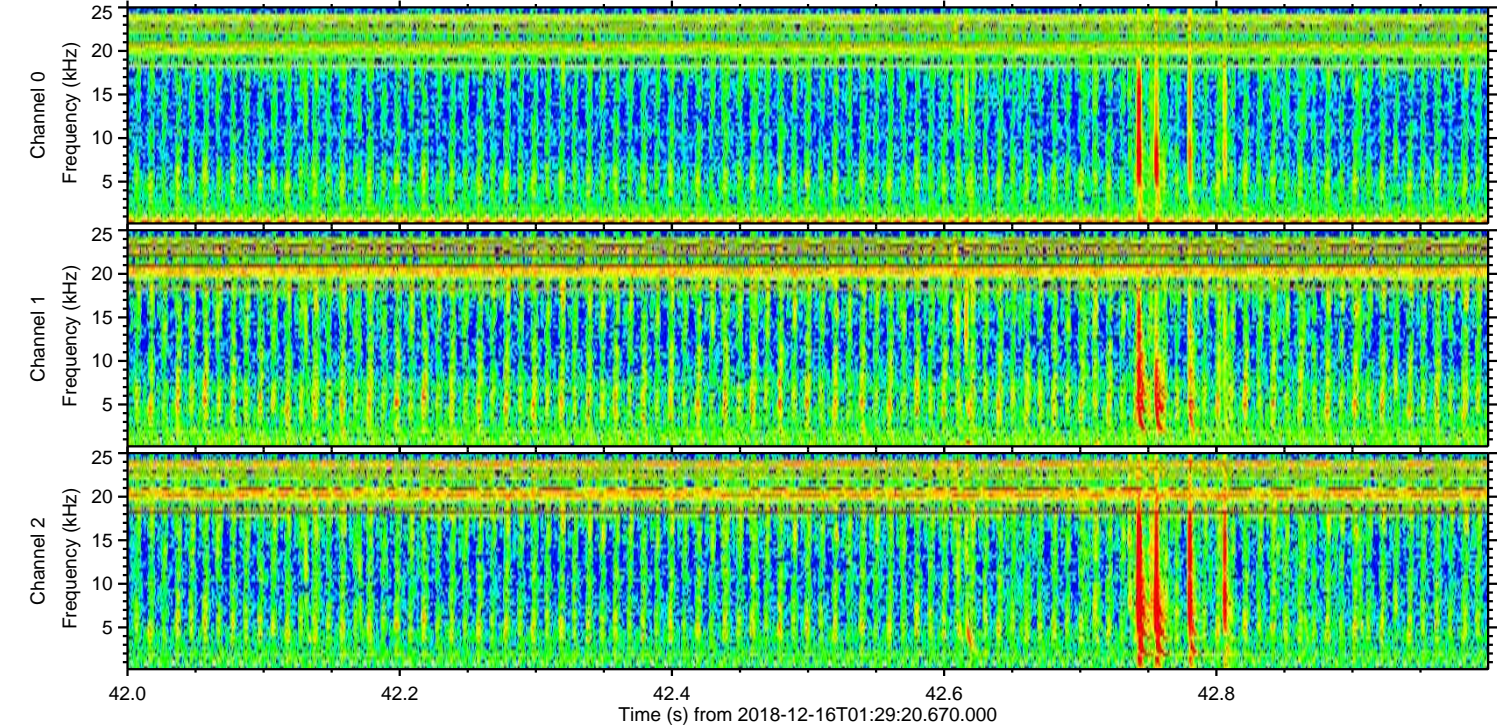
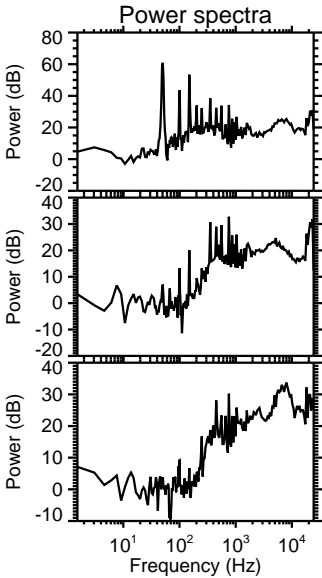
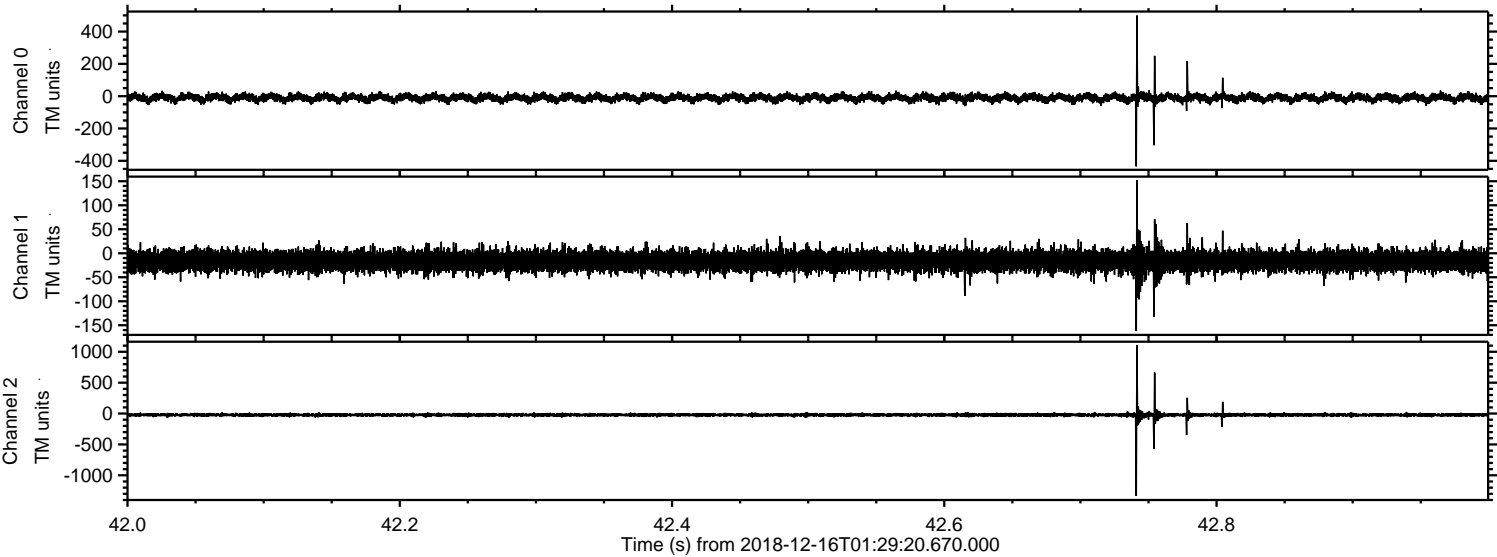
Processed Sun Dec 16 02:37:33 2018 by ELM ver.2012-10-06 from 001__elm20181216_012919__dat00.bin



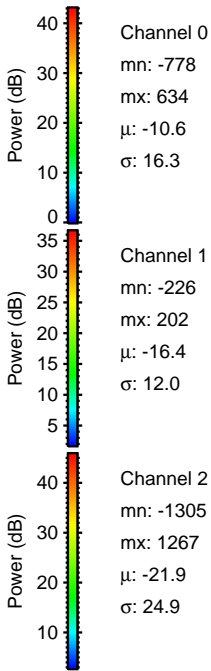
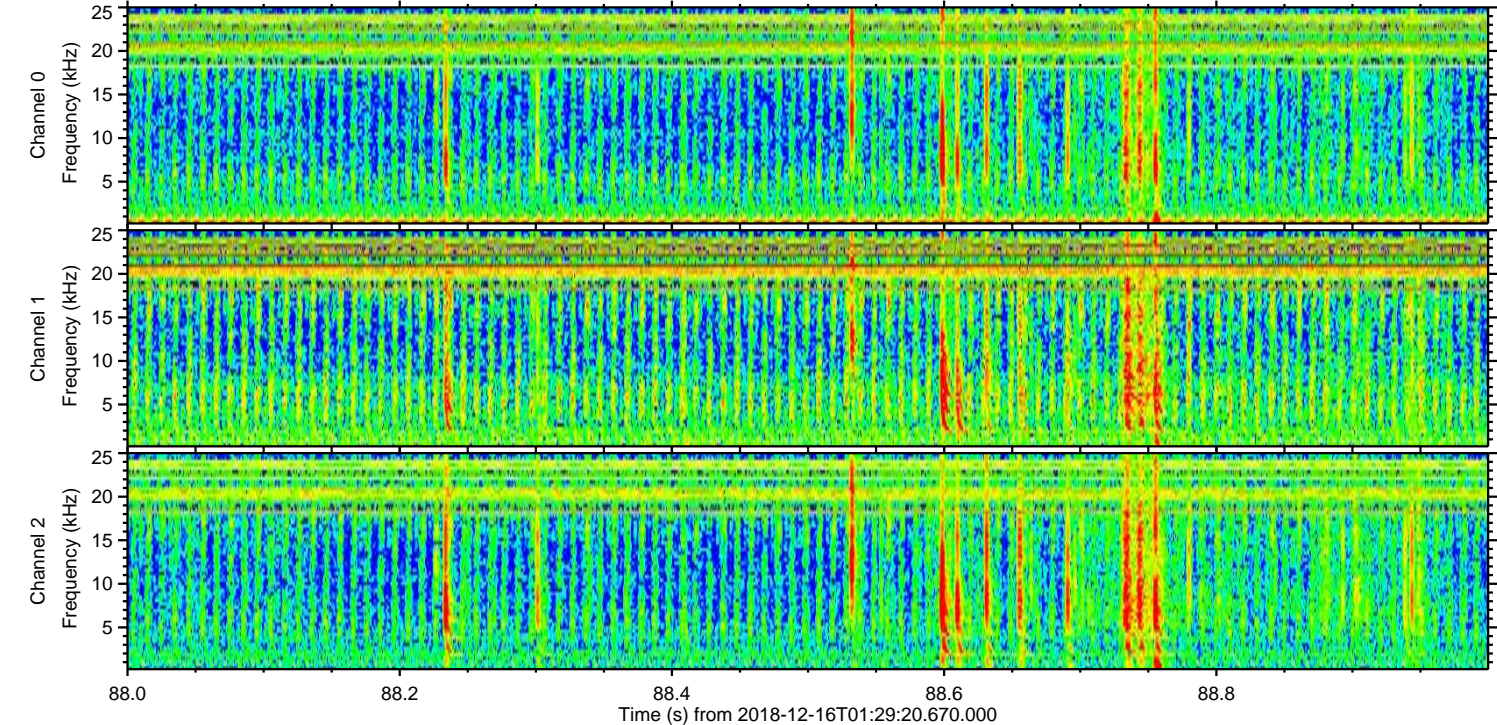
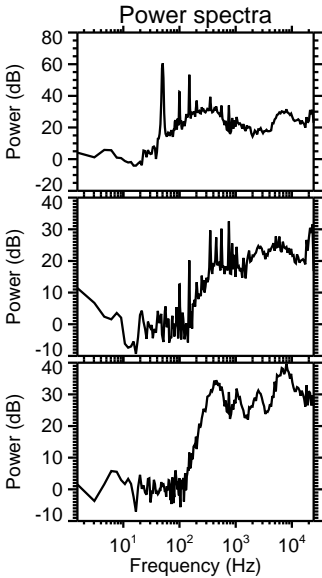
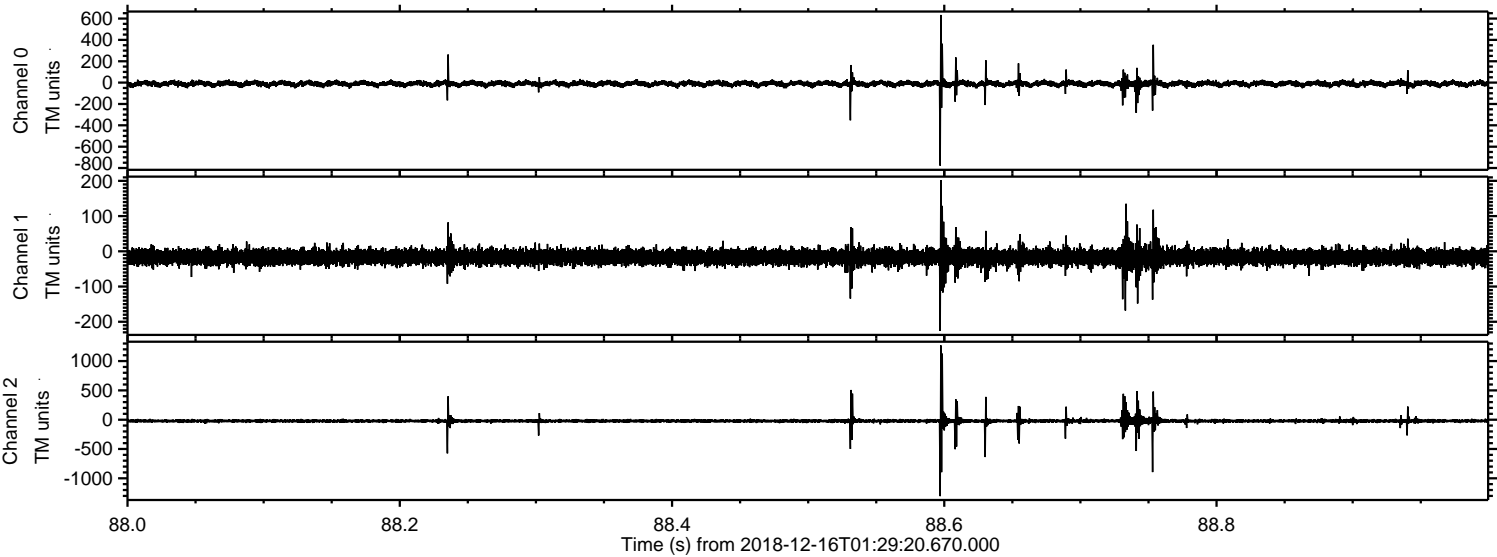
Processed Sun Dec 16 02:37:34 2018 by ELM ver.2012-10-06 from 001__elm20181216_012919__dat00.bin



Processed Sun Dec 16 02:37:35 2018 by ELM ver.2012-10-06 from 001__elm20181216_012919__dat00.bin



Processed Sun Dec 16 02:37:36 2018 by ELM ver.2012-10-06 from 001_elm20181216_012919__dat00.bin



Channel 0
mn: -778
mx: 634
 μ : -10.6
 σ : 16.3

Channel 1
mn: -226
mx: 202
 μ : -16.4
 σ : 12.0

Channel 2
mn: -1305
mx: 1267
 μ : -21.9
 σ : 24.9

Processed Sun Dec 16 02:37:36 2018 by ELM ver.2012-10-06 from 001__elm20181216_012919__dat00.bin

