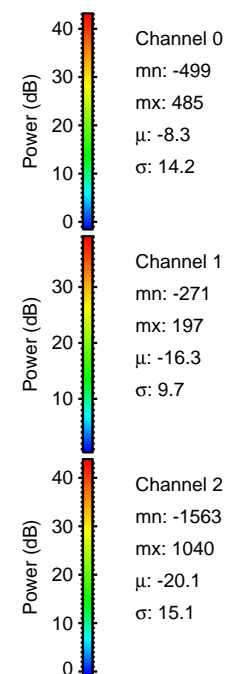
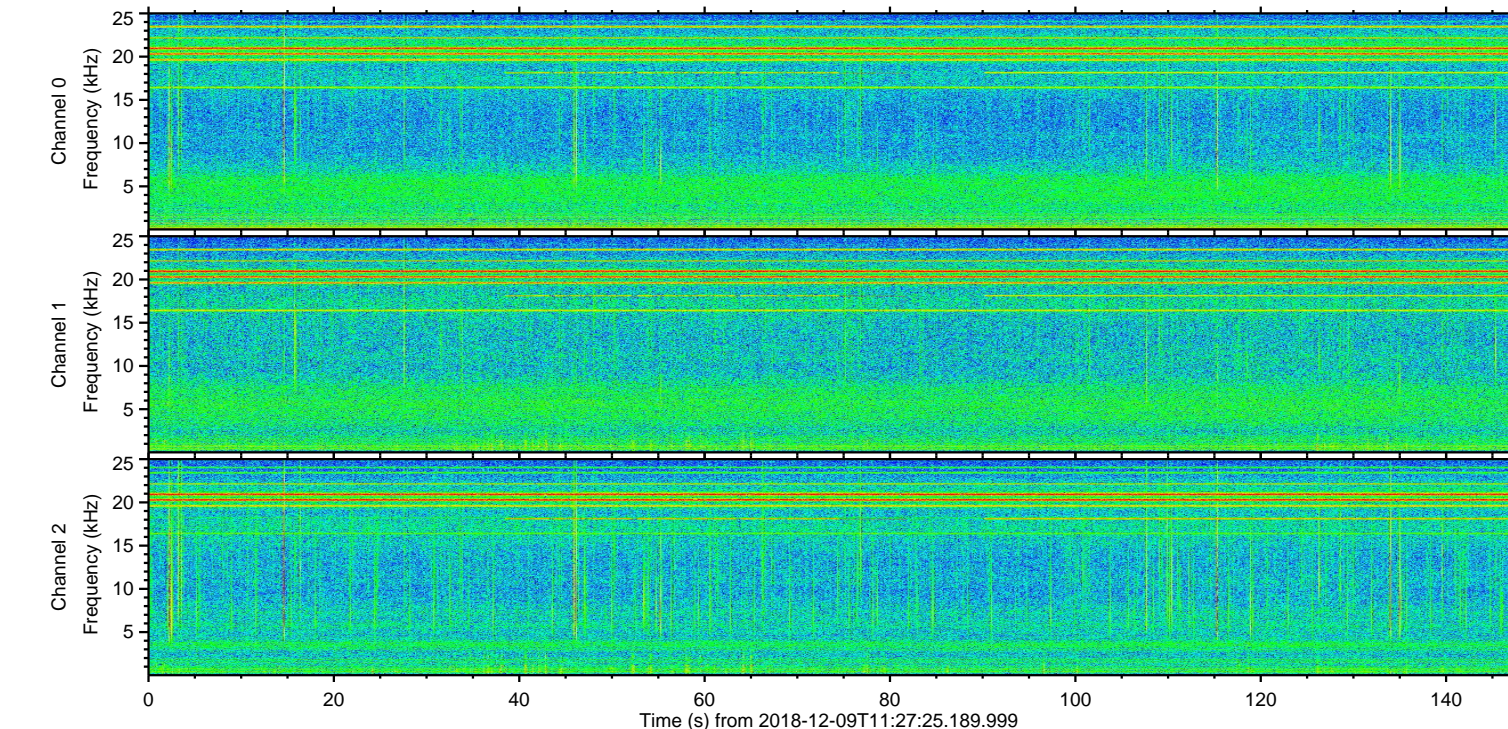
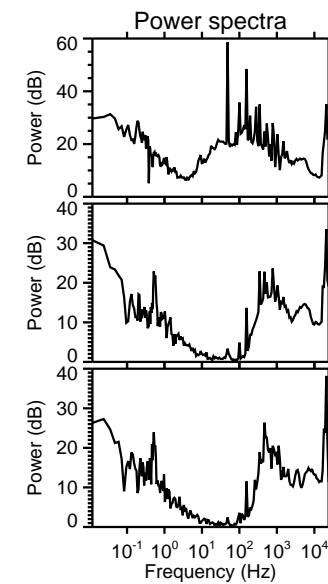
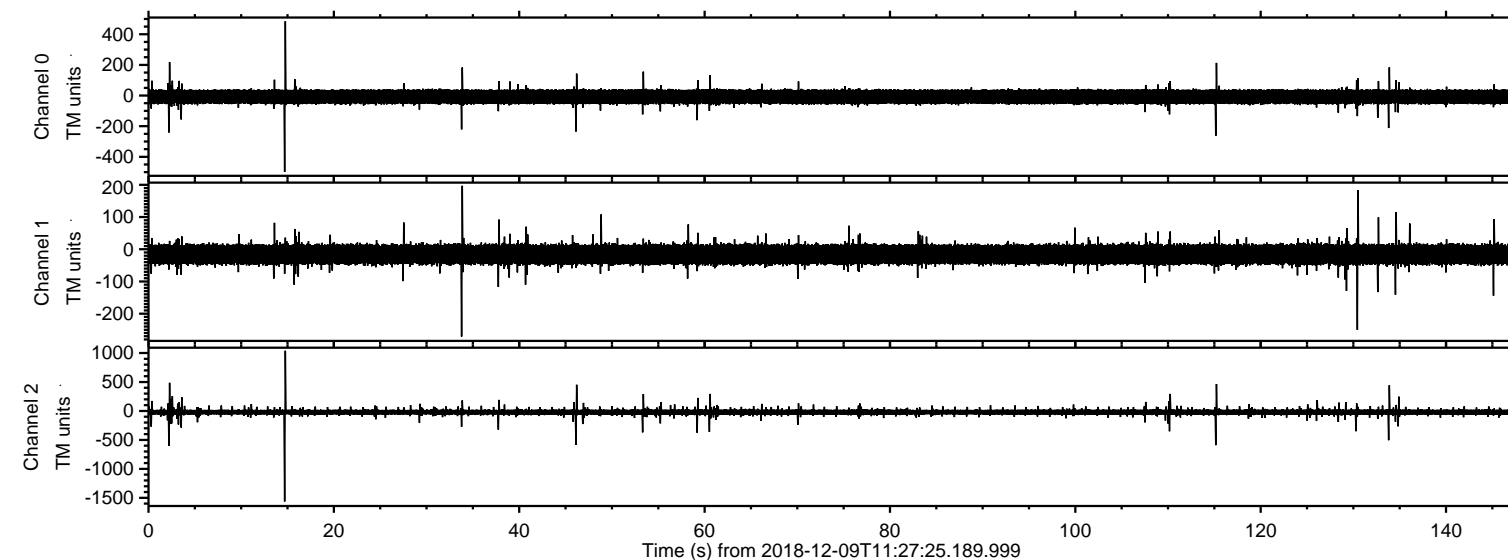


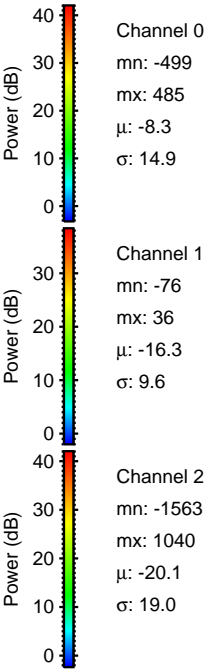
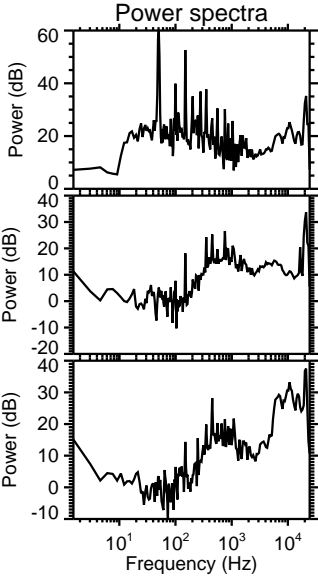
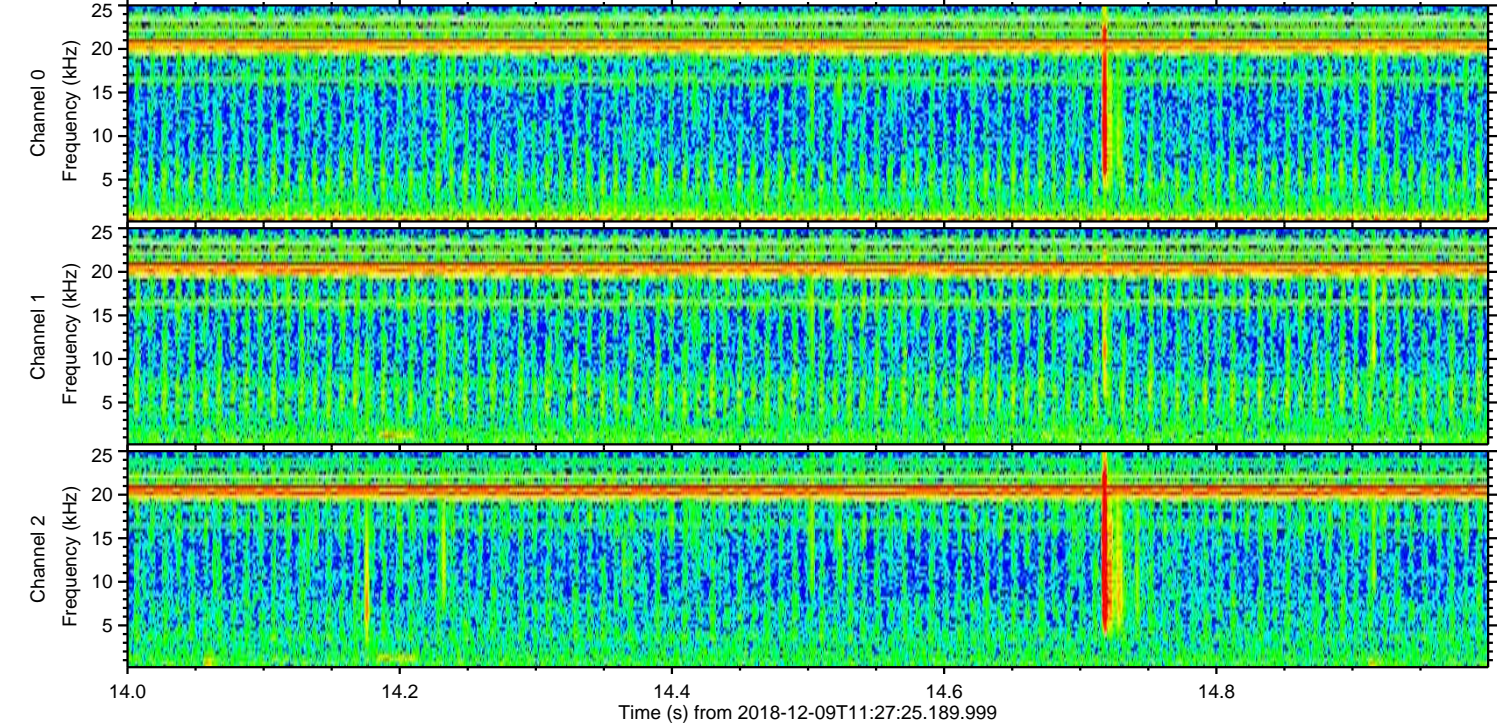
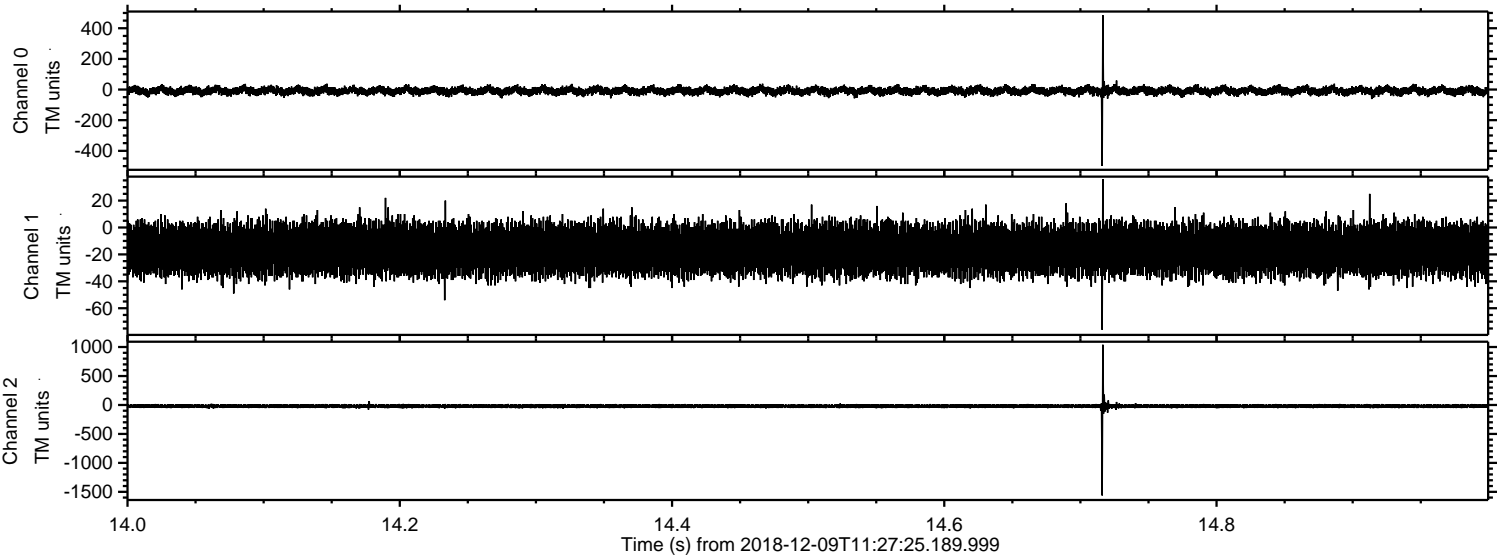
# ELMAVAN 3D WAVEFORMS (Measured data sampled at 50 kHz) 51000 packets of 144 samples from 2018-12-09T11:27:25.189.999.

Processed Sun Dec 9 12:35:34 2018 by ELM ver.2012-10-06 from 001\_\_elm20181209\_112724\_\_dat00.bin



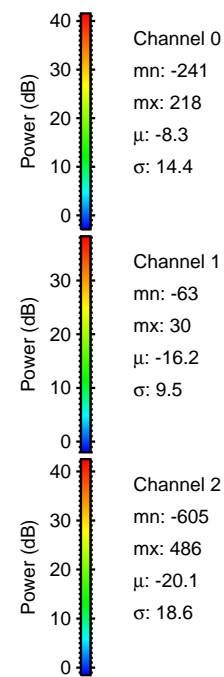
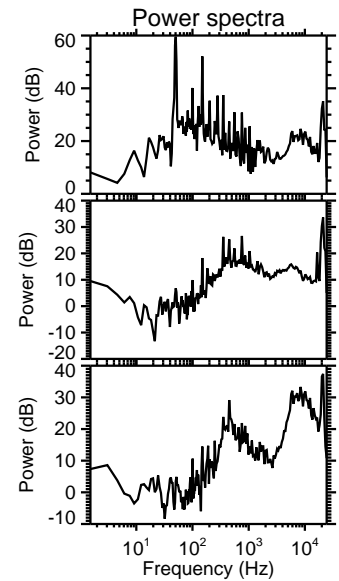
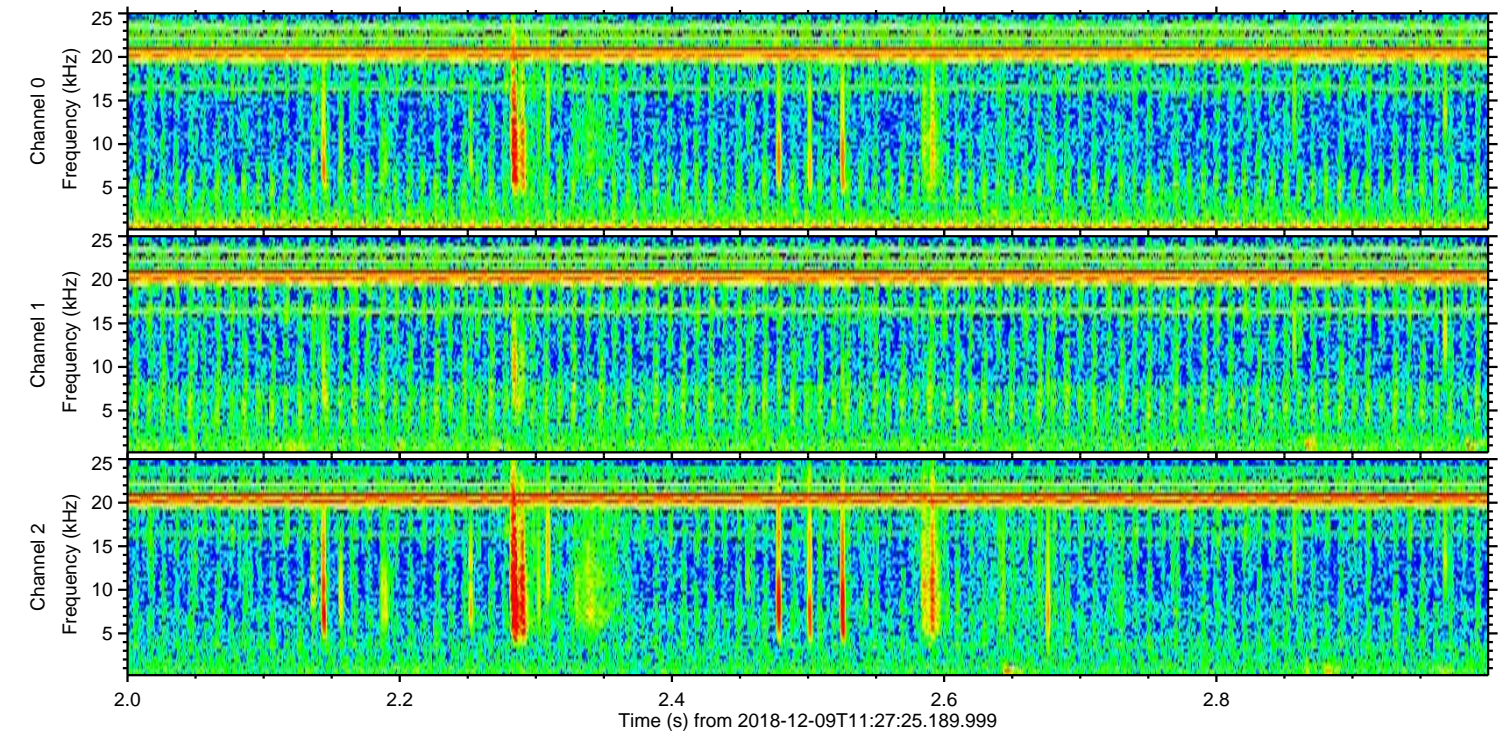
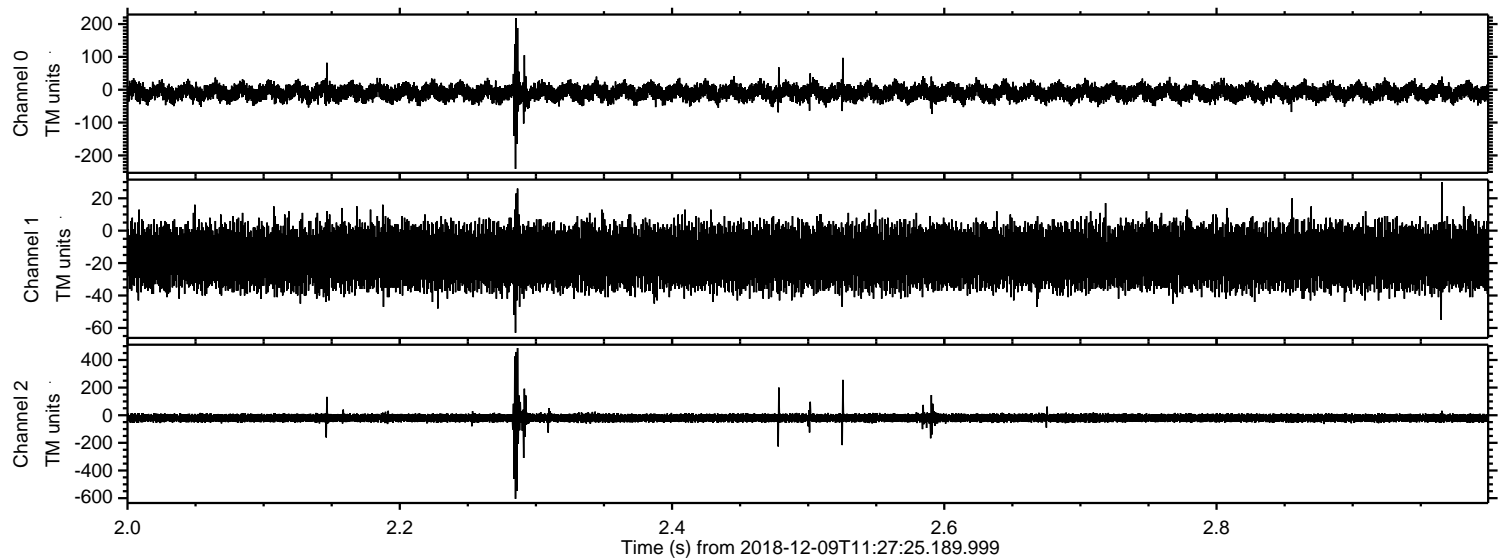


Processed Sun Dec 9 12:35:40 2018 by ELM ver.2012-10-06 from 001\_\_elm20181209\_112724\_\_dat00.bin



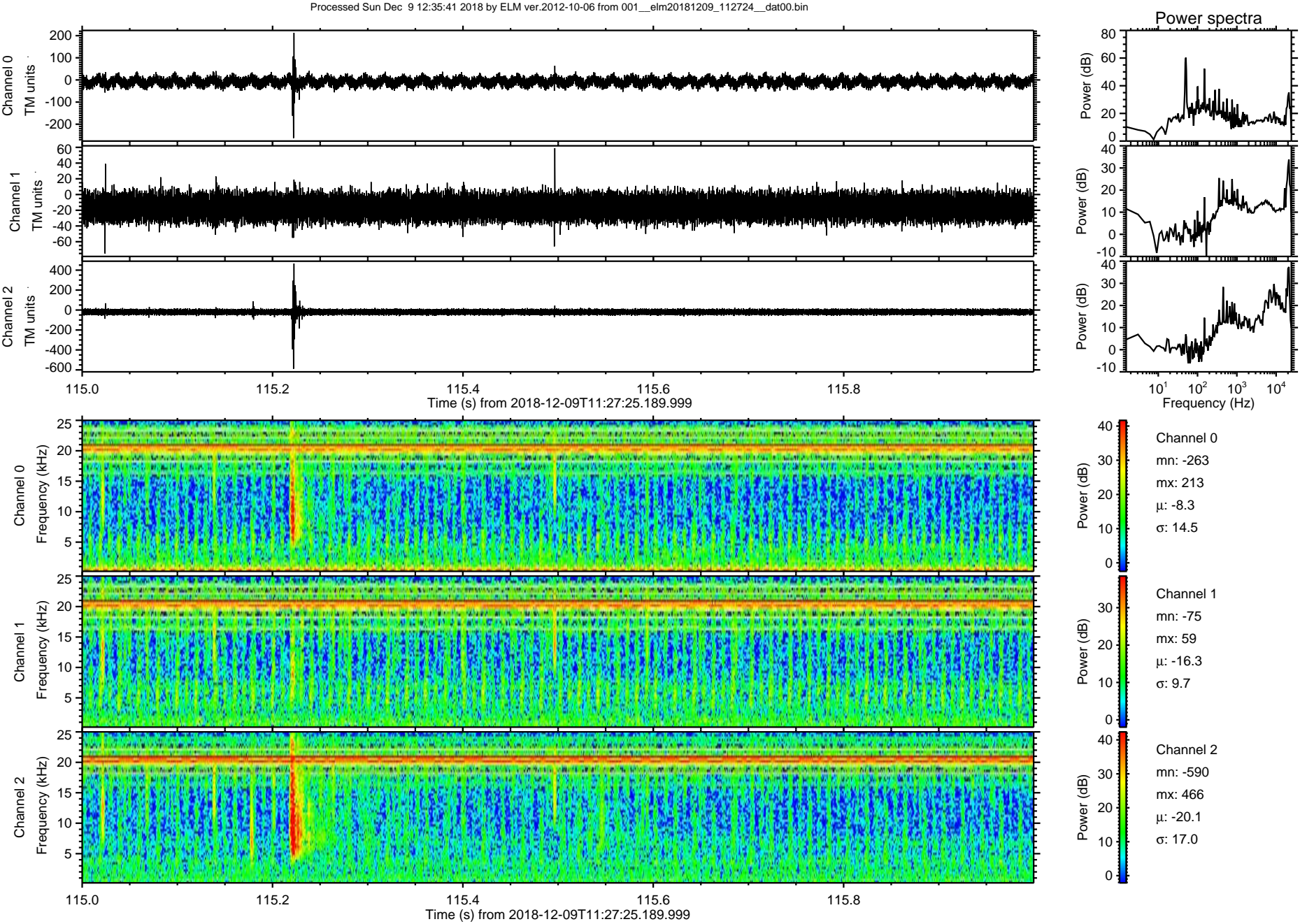


Processed Sun Dec 9 12:35:41 2018 by ELM ver.2012-10-06 from 001\_\_elm20181209\_112724\_\_dat00.bin



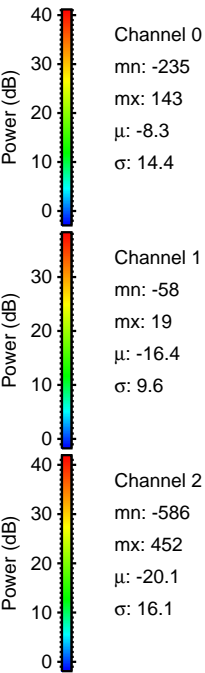
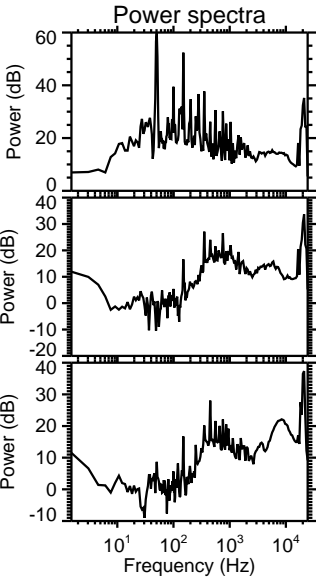
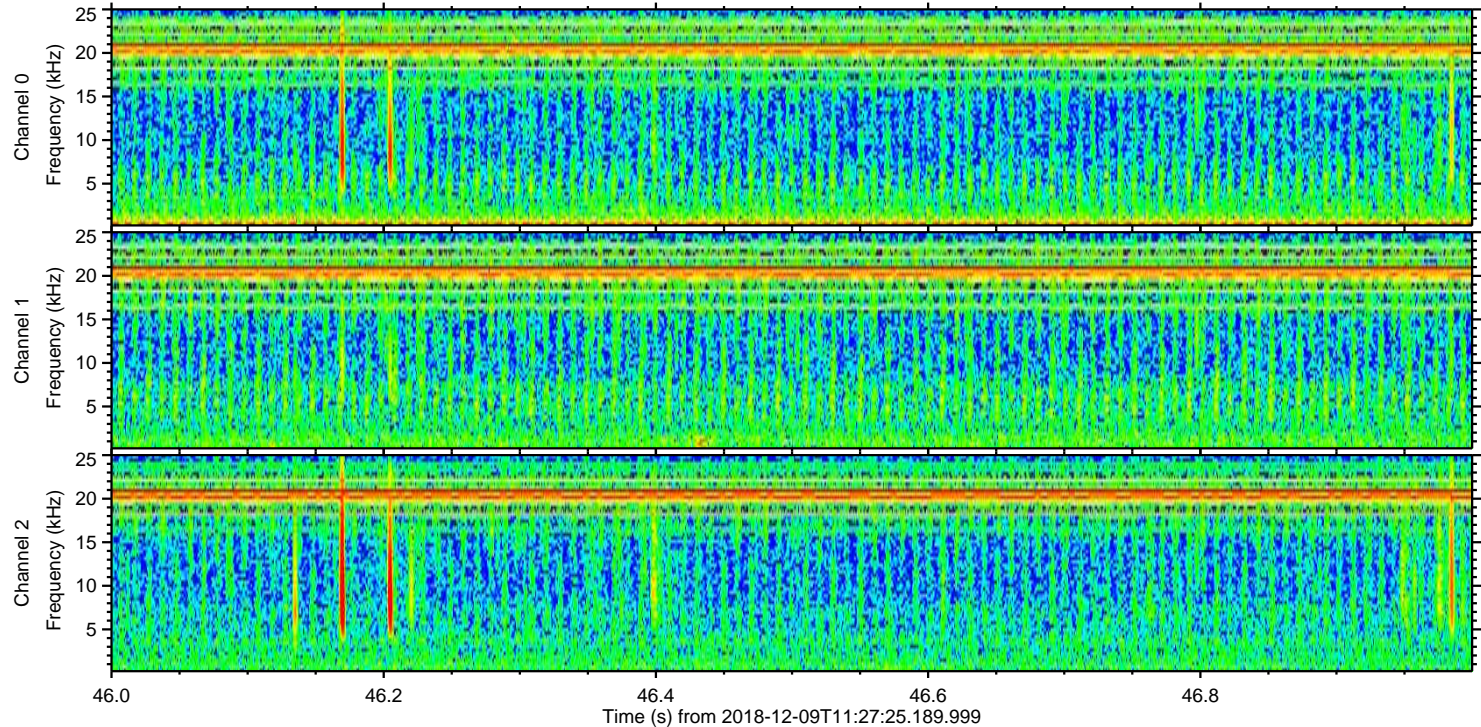
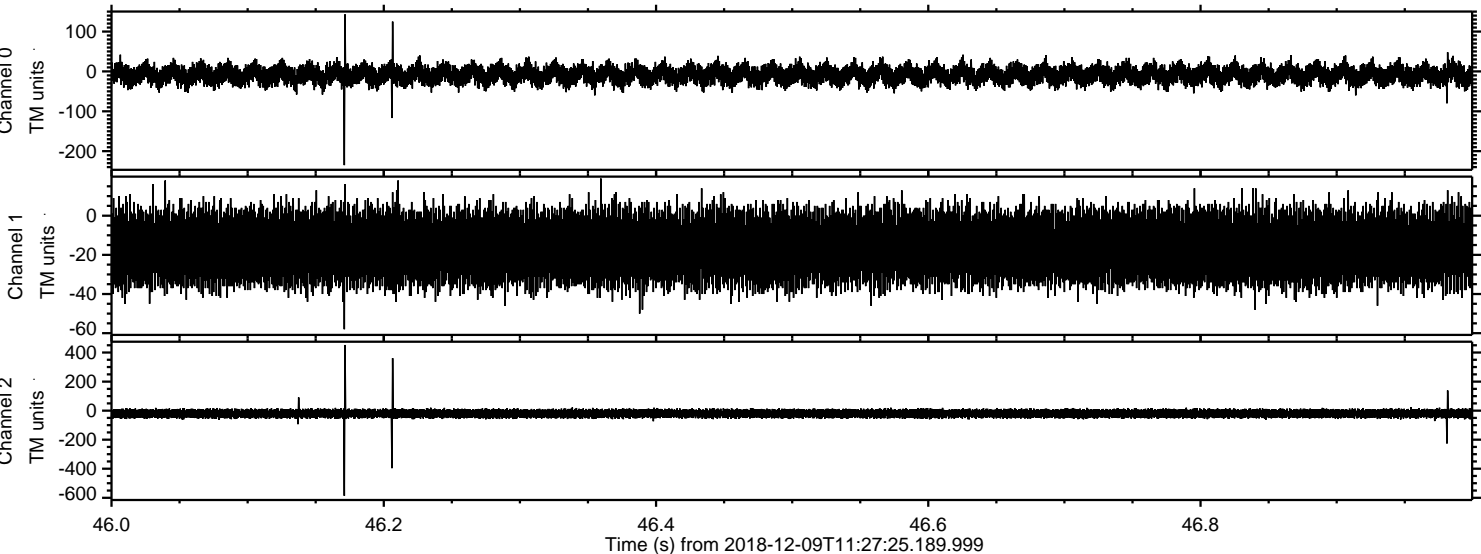


ELMAVAN 3D WAVEFORMS (Measured data sampled at 50 kHz) 51000 packets of 144 samples from 2018-12-09T11:27:25.189.999. Part 116/147



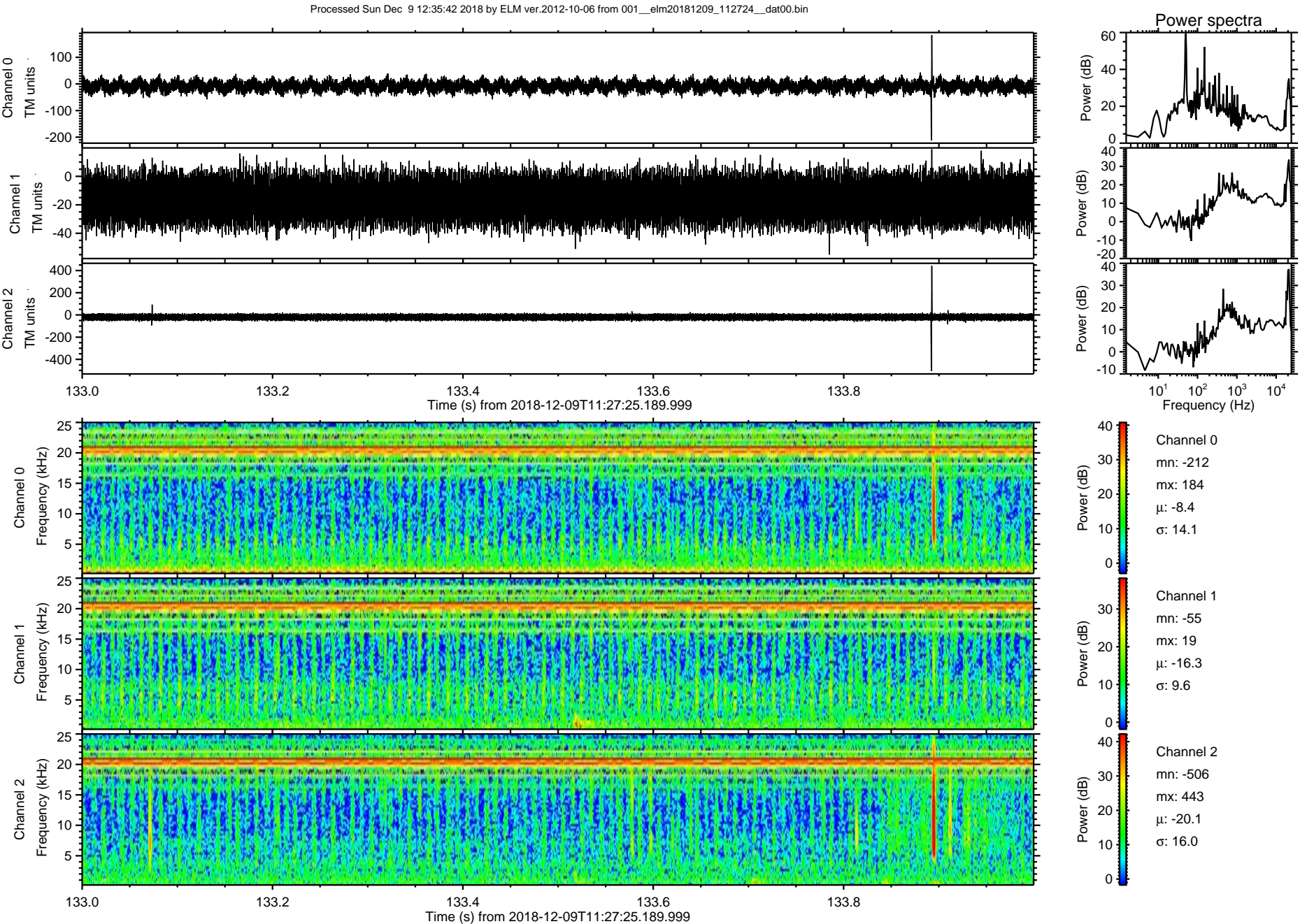


Processed Sun Dec 9 12:35:42 2018 by ELM ver.2012-10-06 from 001\_\_elm20181209\_112724\_\_dat00.bin



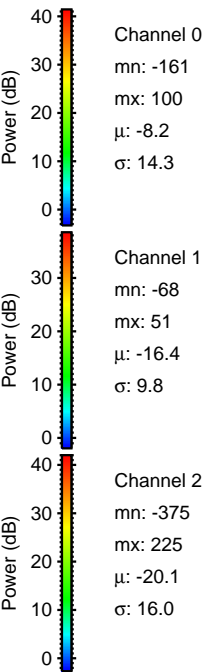
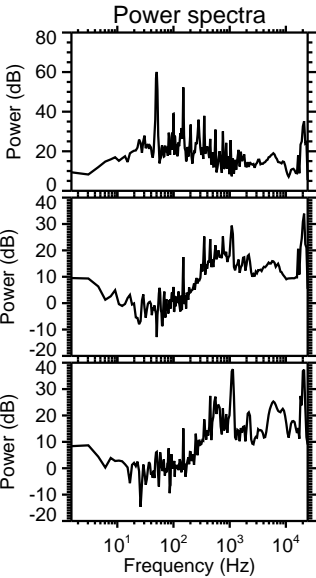
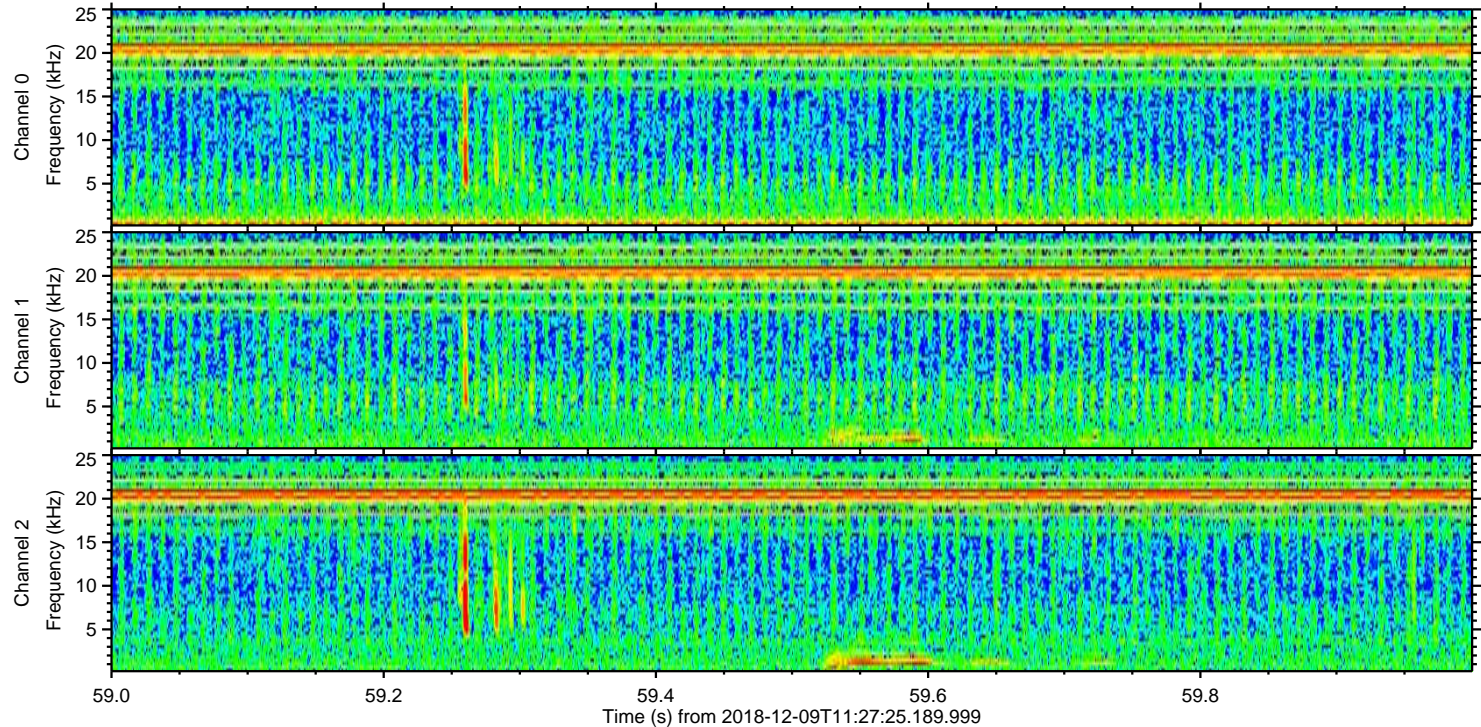
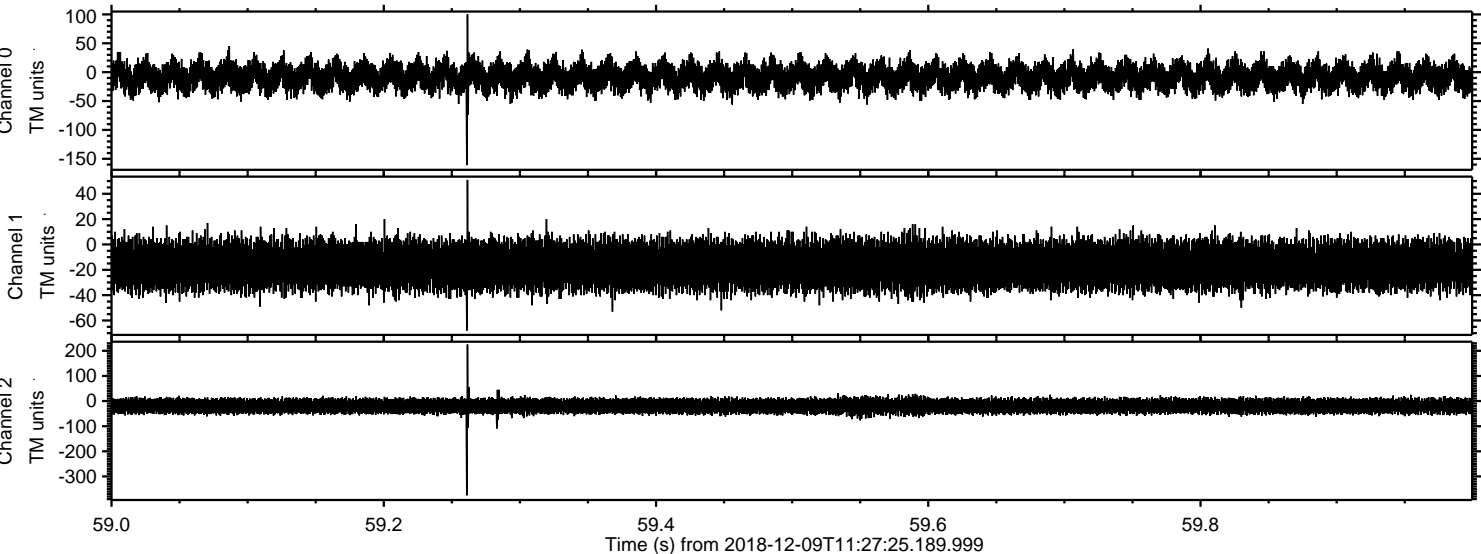


ELMAVAN 3D WAVEFORMS (Measured data sampled at 50 kHz) 51000 packets of 144 samples from 2018-12-09T11:27:25.189.999. Part 134/147



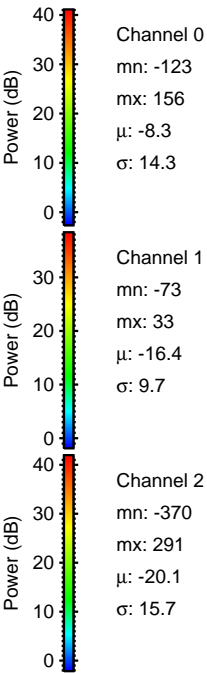
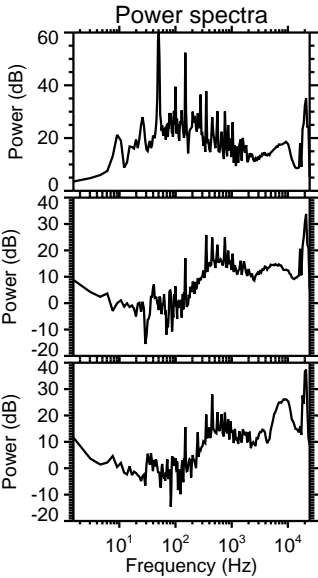
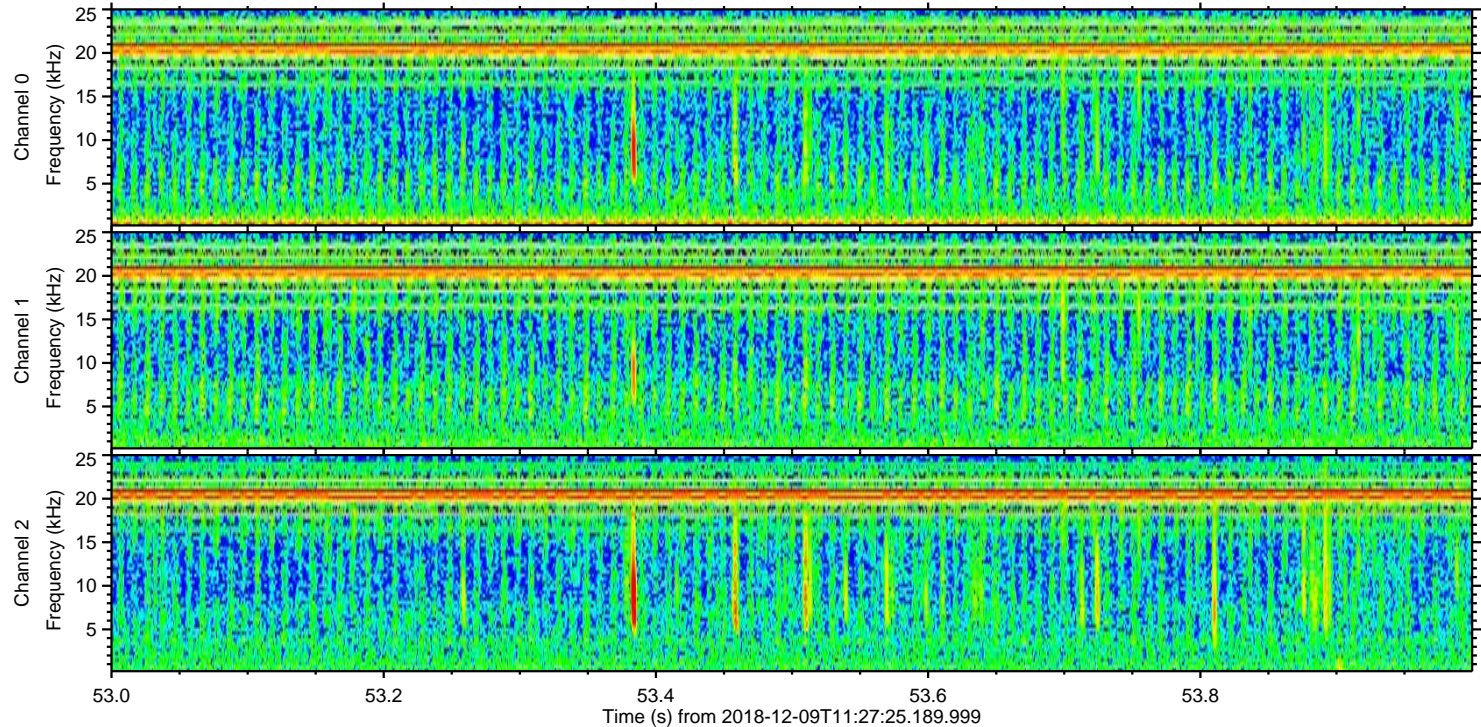
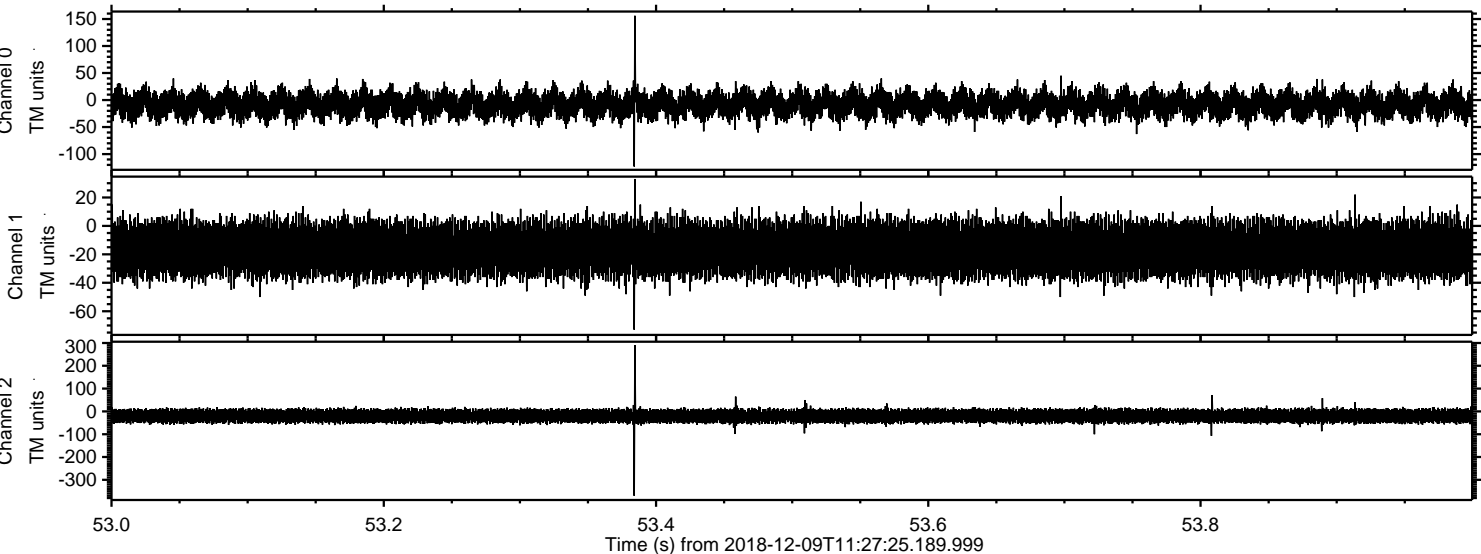


Processed Sun Dec 9 12:35:43 2018 by ELM ver.2012-10-06 from 001\_\_elm20181209\_112724\_\_dat00.bin



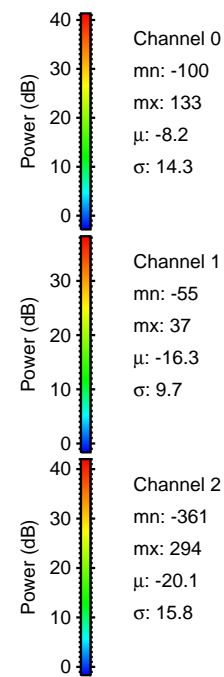
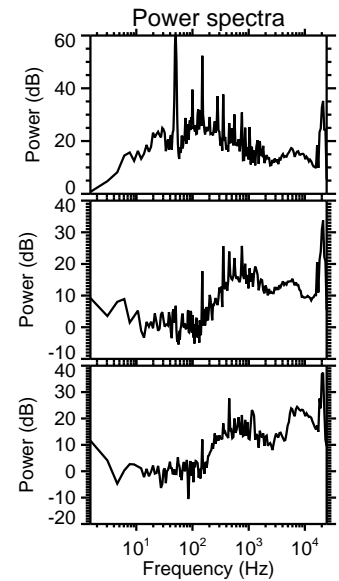
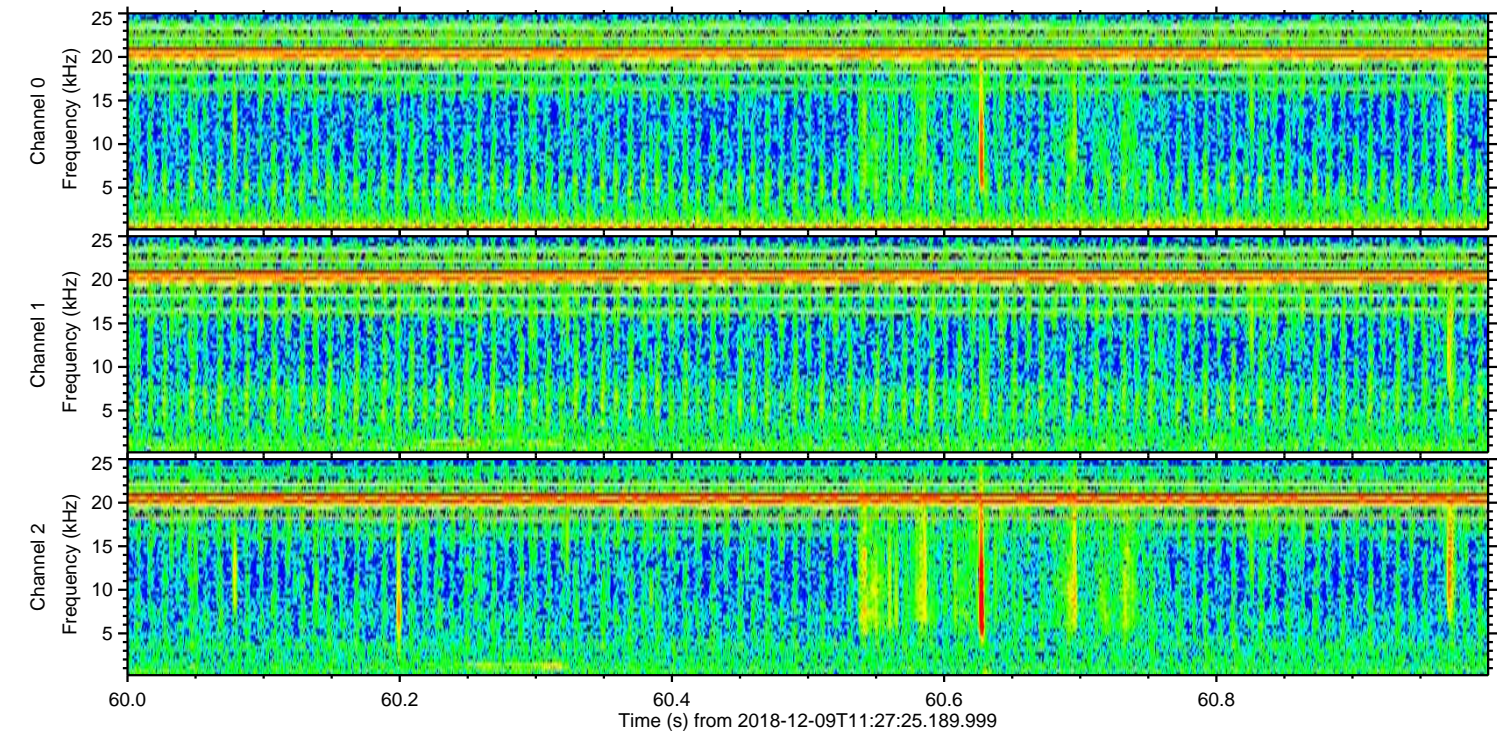
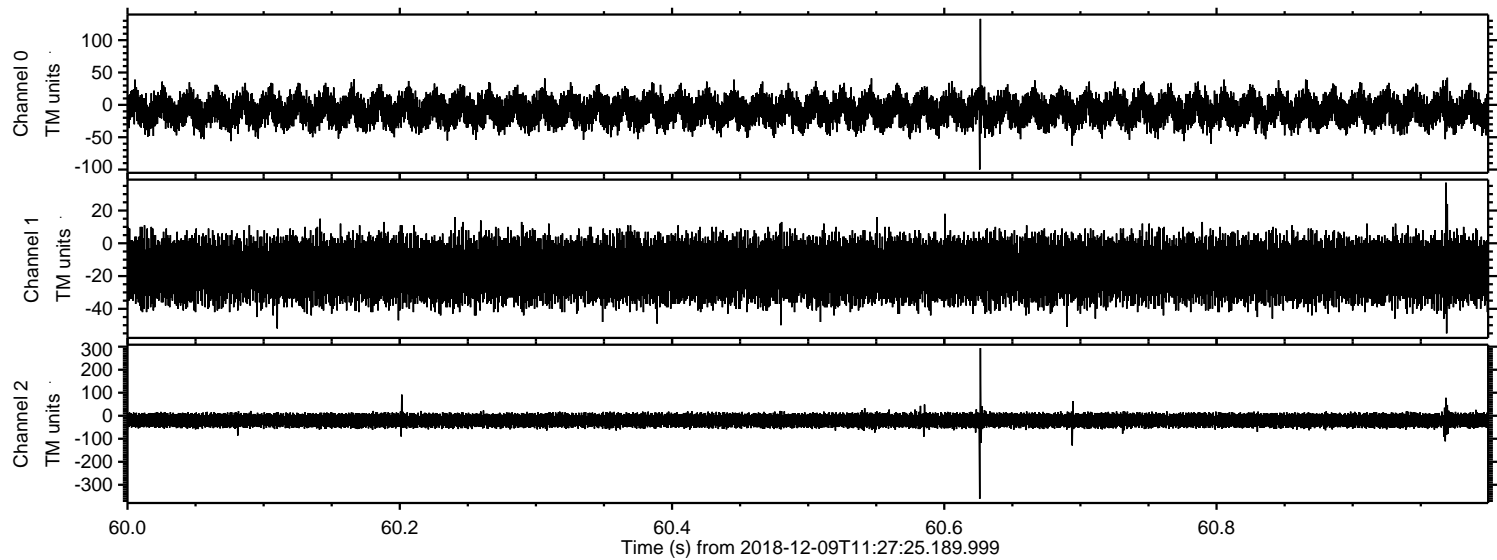


Processed Sun Dec 9 12:35:44 2018 by ELM ver.2012-10-06 from 001\_\_elm20181209\_112724\_\_dat00.bin





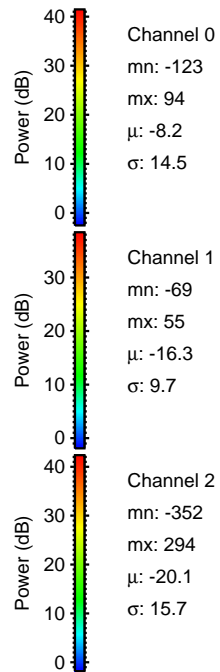
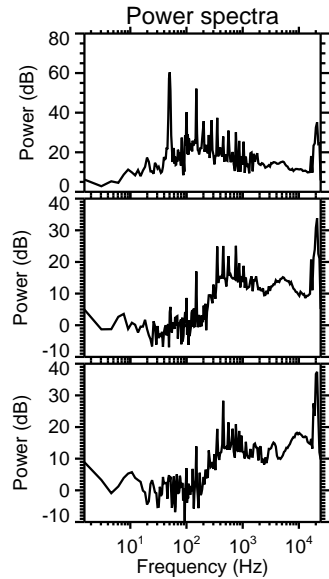
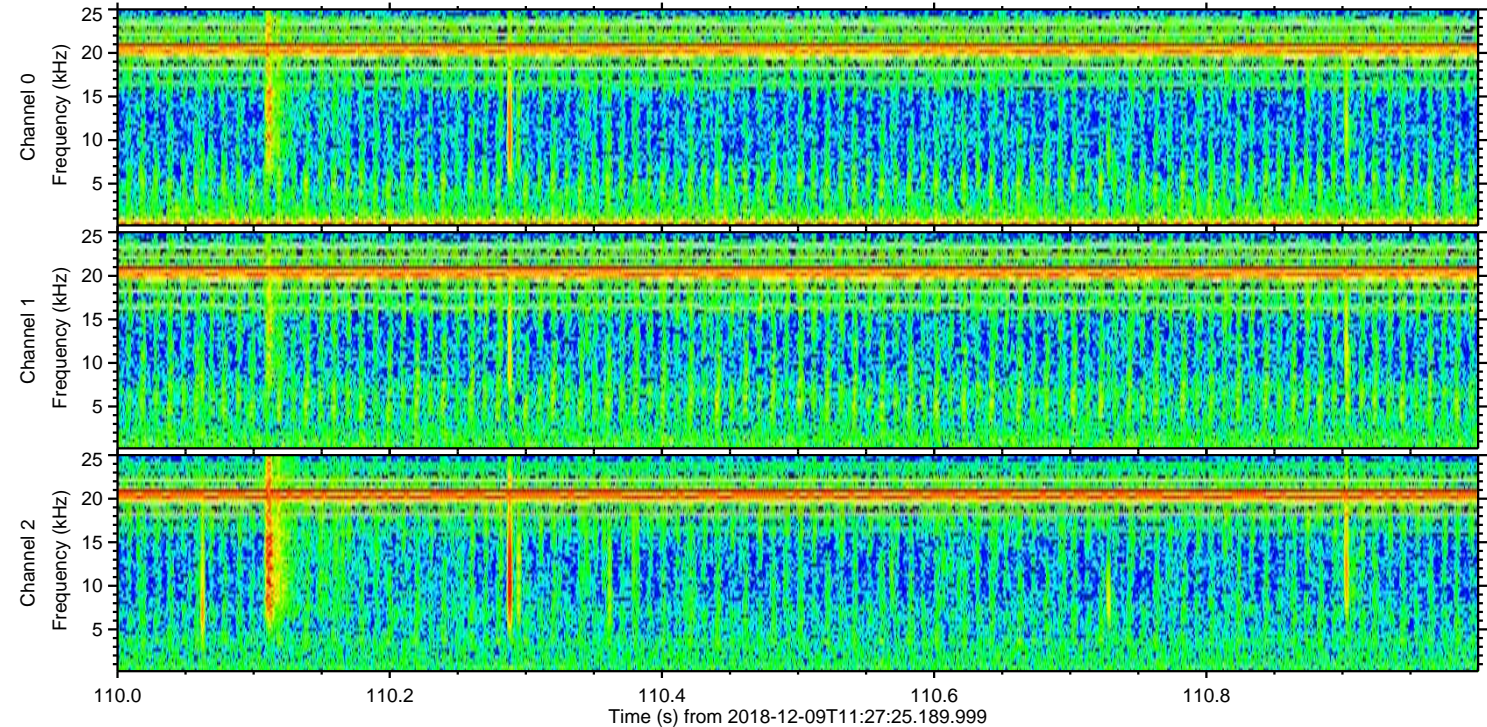
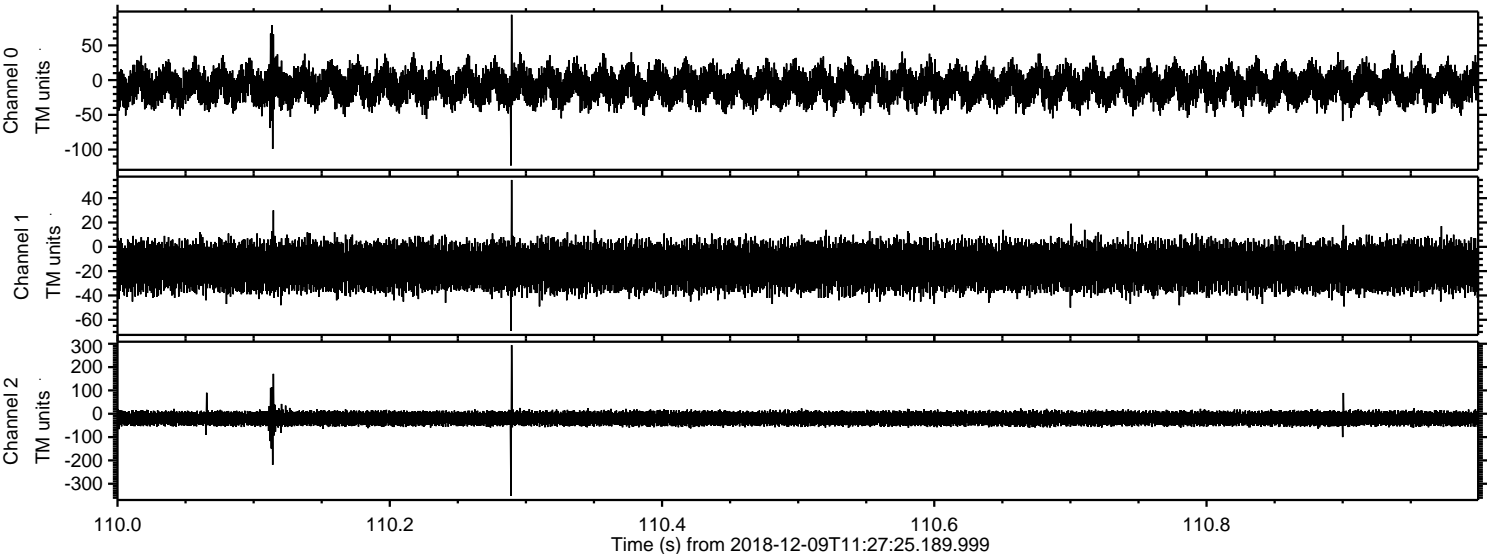
Processed Sun Dec 9 12:35:44 2018 by ELM ver.2012-10-06 from 001\_\_elm20181209\_112724\_\_dat00.bin





ELMAVAN 3D WAVEFORMS (Measured data sampled at 50 kHz) 51000 packets of 144 samples from 2018-12-09T11:27:25.189.999. Part 111/147

Processed Sun Dec 9 12:35:45 2018 by ELM ver.2012-10-06 from 001\_\_elm20181209\_112724\_\_dat00.bin





Processed Sun Dec 9 12:35:46 2018 by ELM ver.2012-10-06 from 001\_\_elm20181209\_112724\_\_dat00.bin

