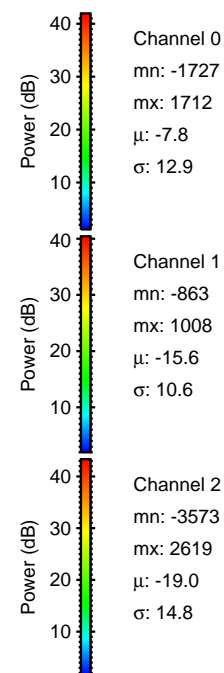
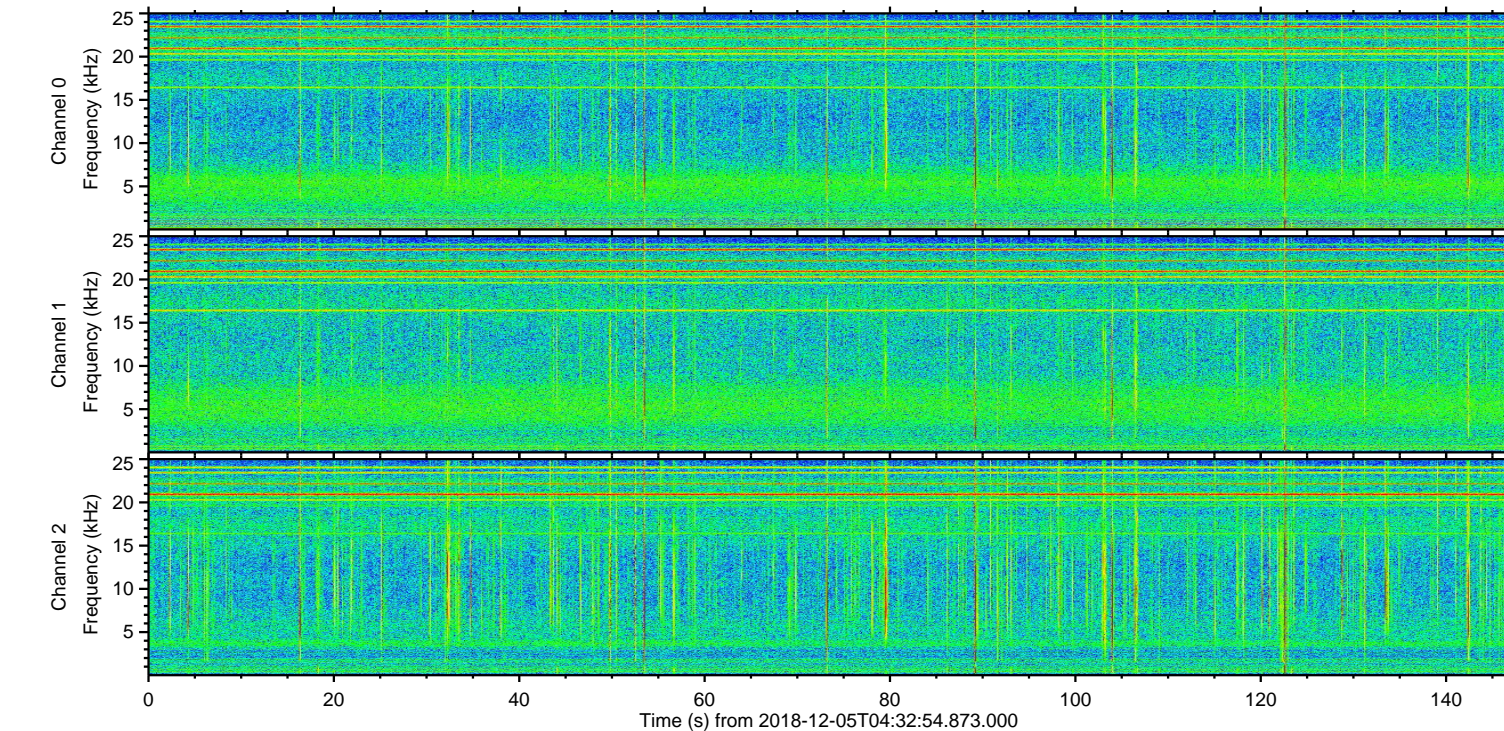
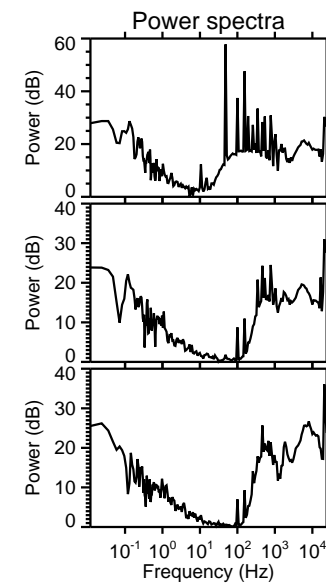
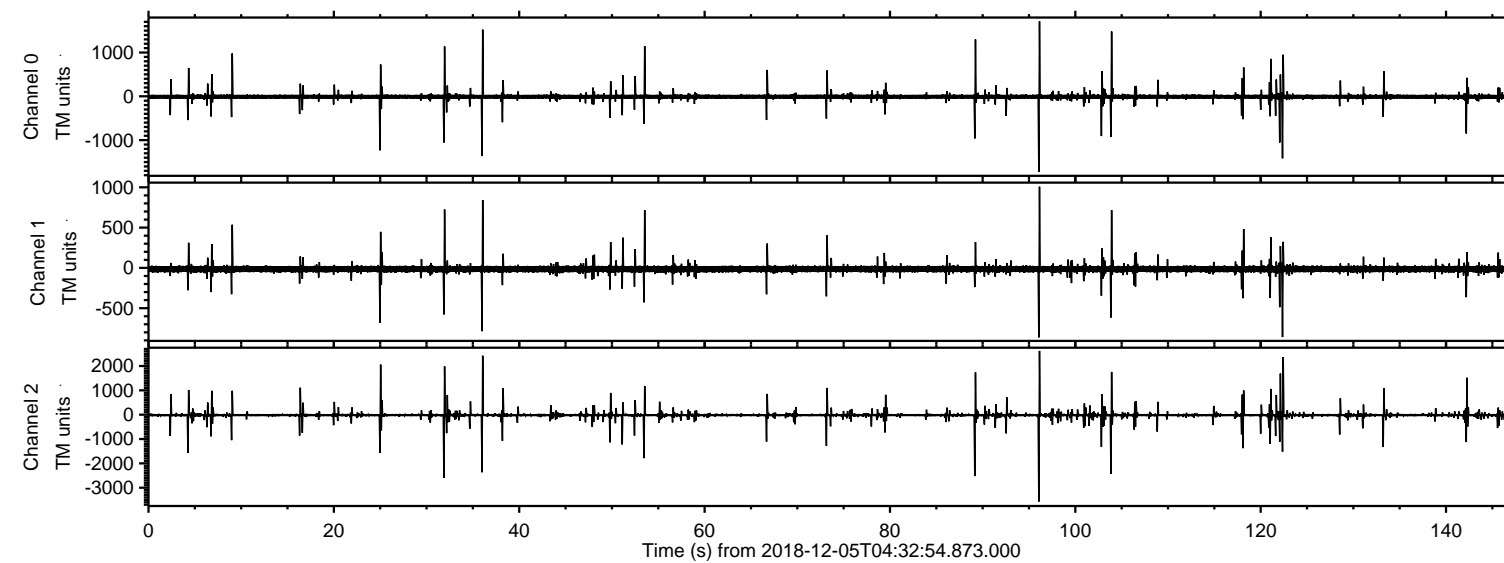


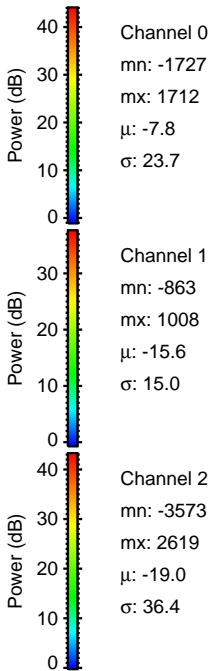
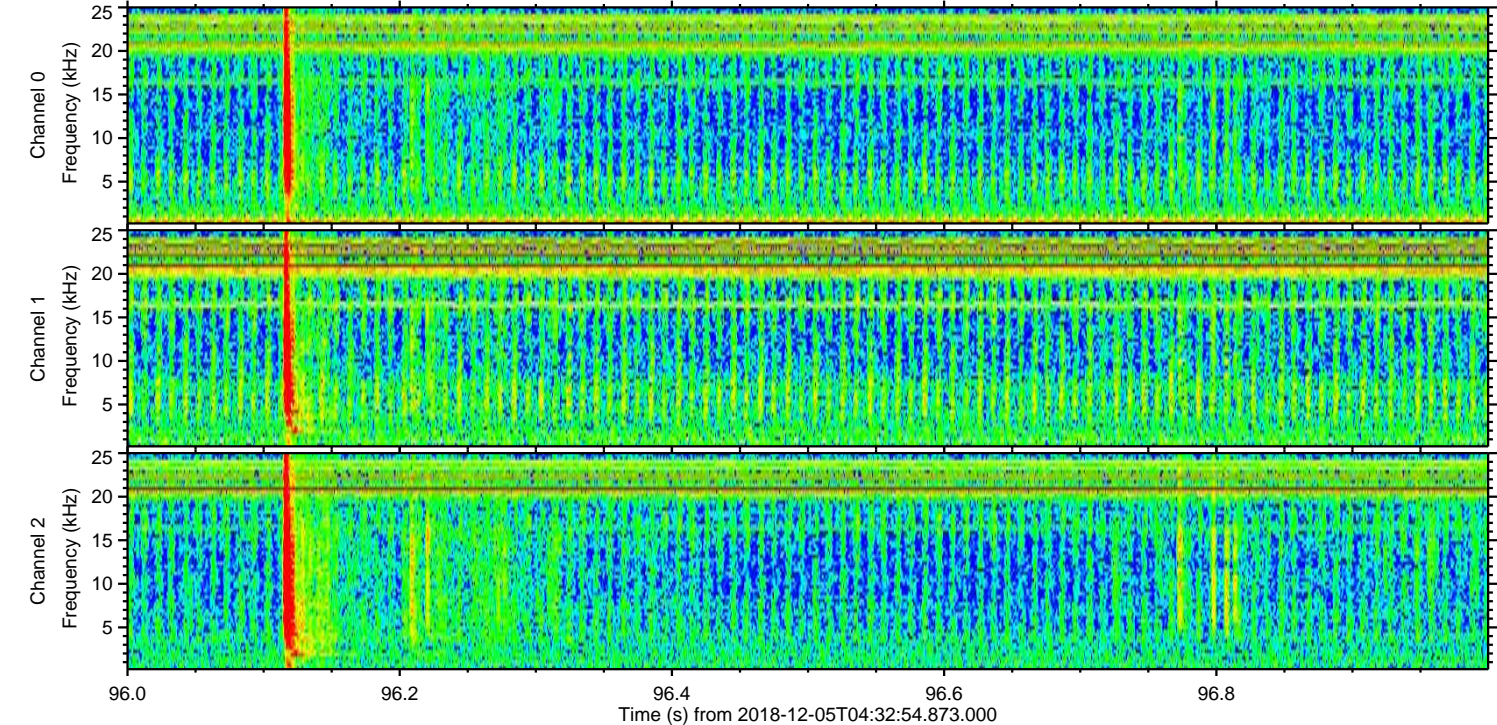
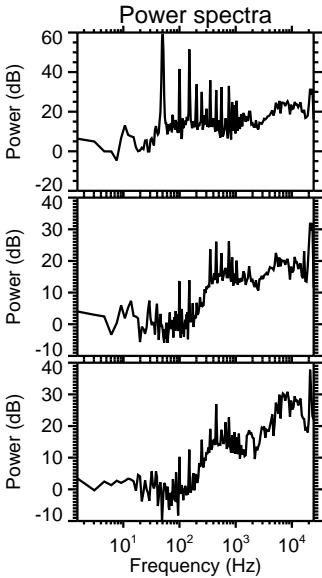
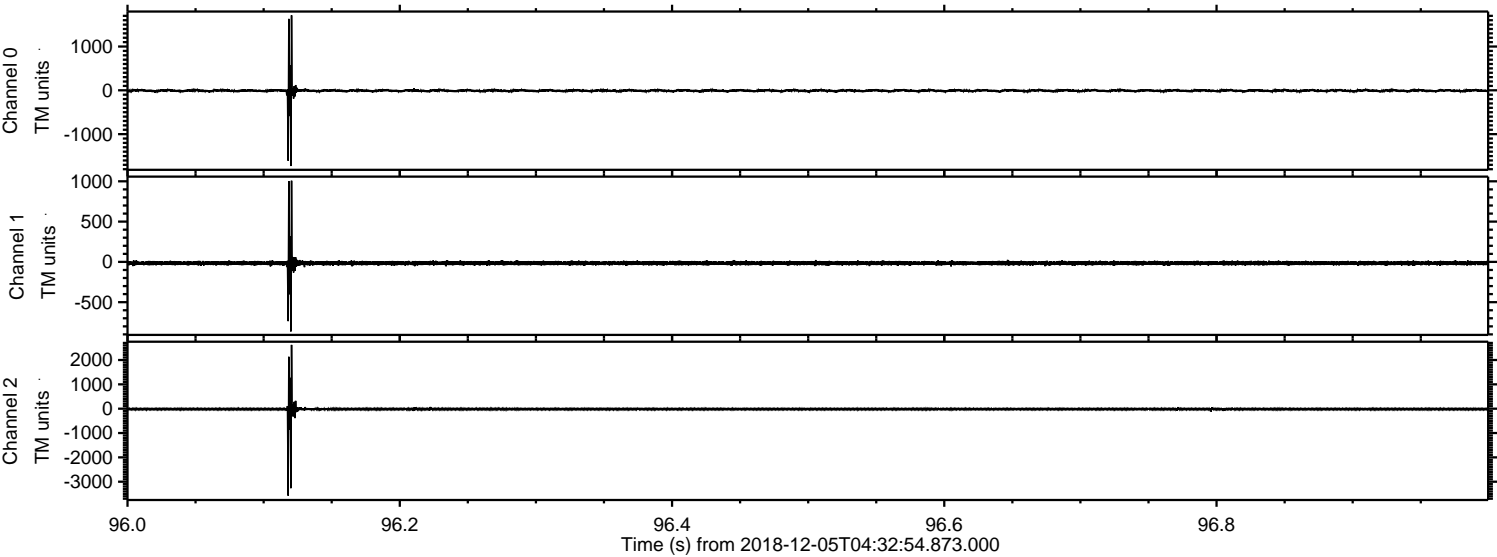
# ELMAVAN 3D WAVEFORMS (Measured data sampled at 50 kHz) 51000 packets of 144 samples from 2018-12-05T04:32:54.873.000.

Processed Wed Dec 5 05:41:07 2018 by ELM ver.2012-10-06 from 001\_\_elm20181205\_043253\_\_dat00.bin



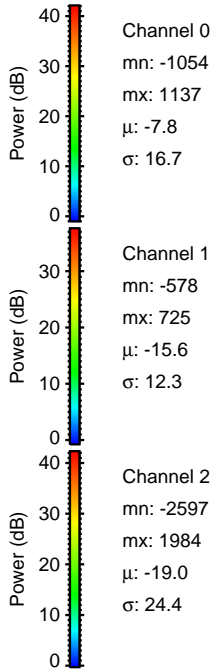
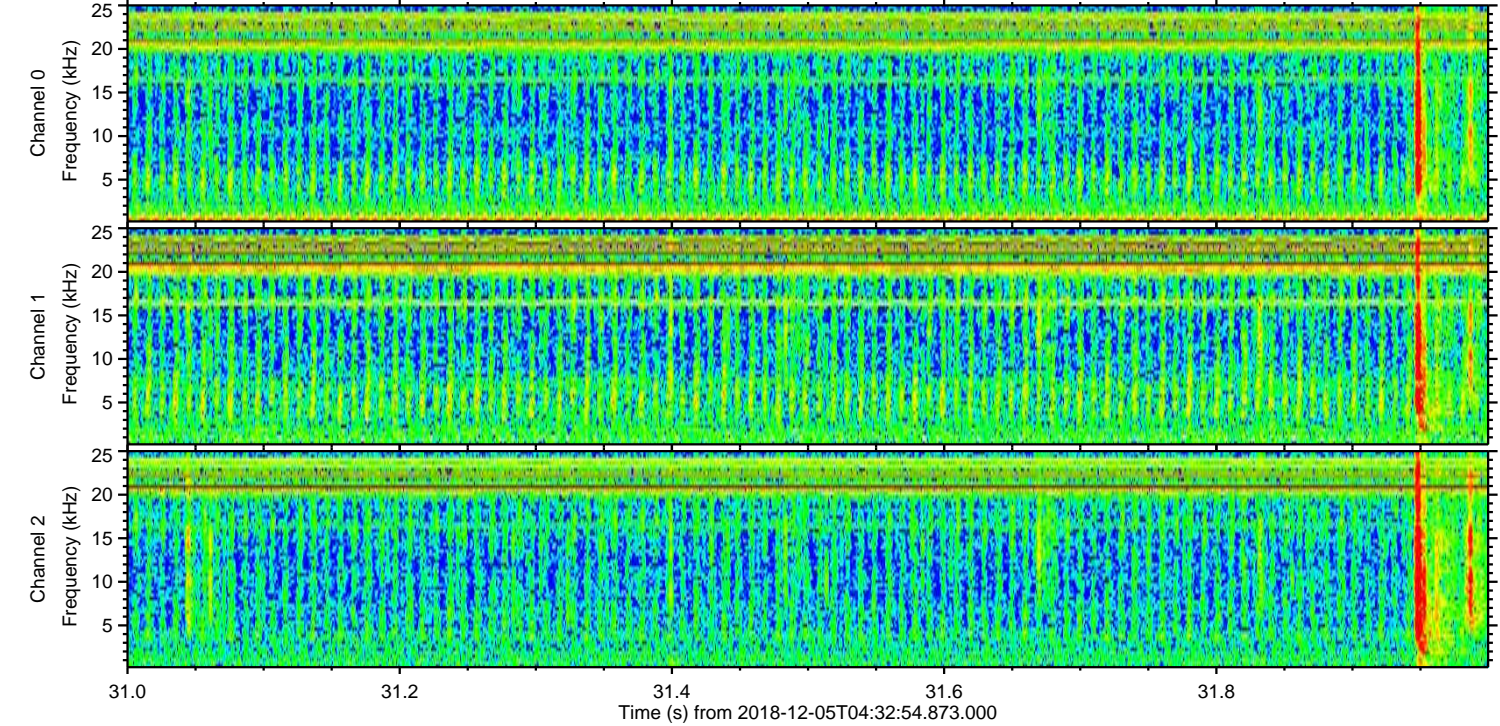
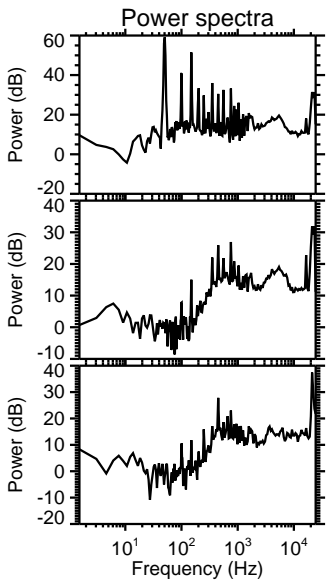
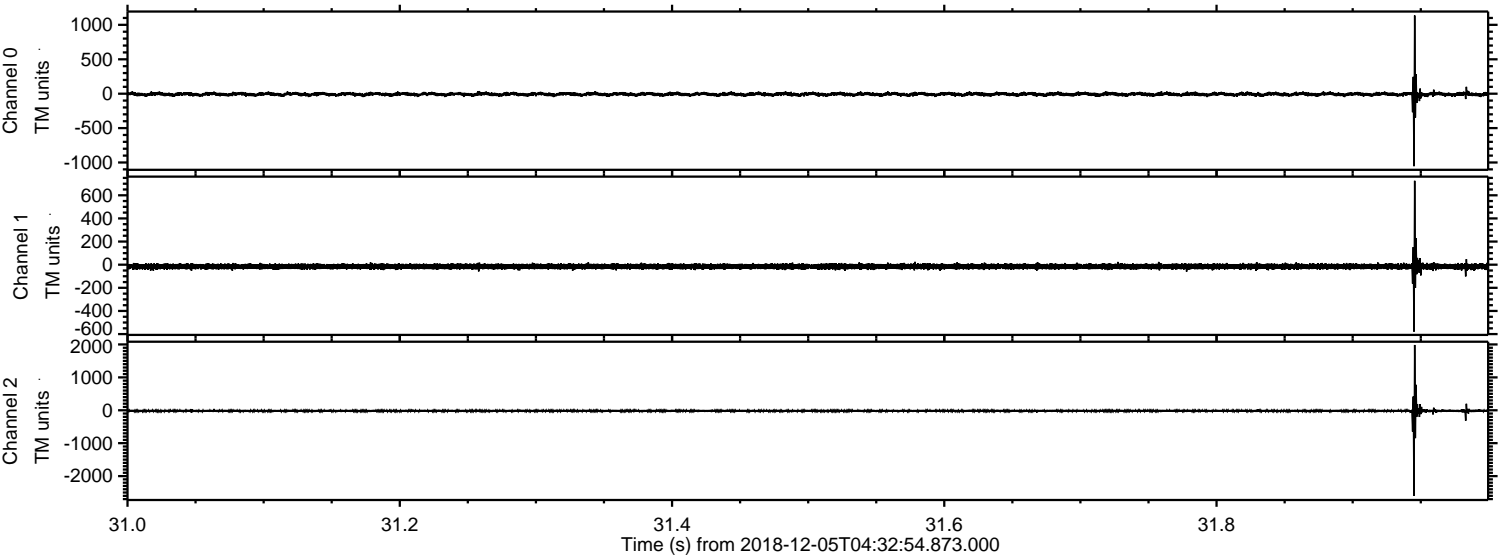


Processed Wed Dec 5 05:41:12 2018 by ELM ver.2012-10-06 from 001\_\_elm20181205\_043253\_\_dat00.bin



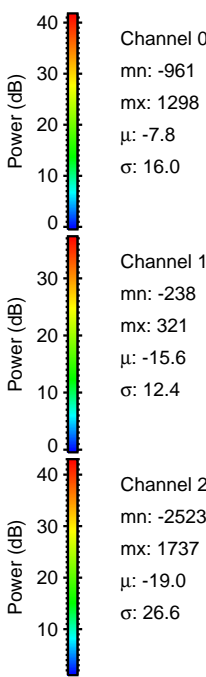
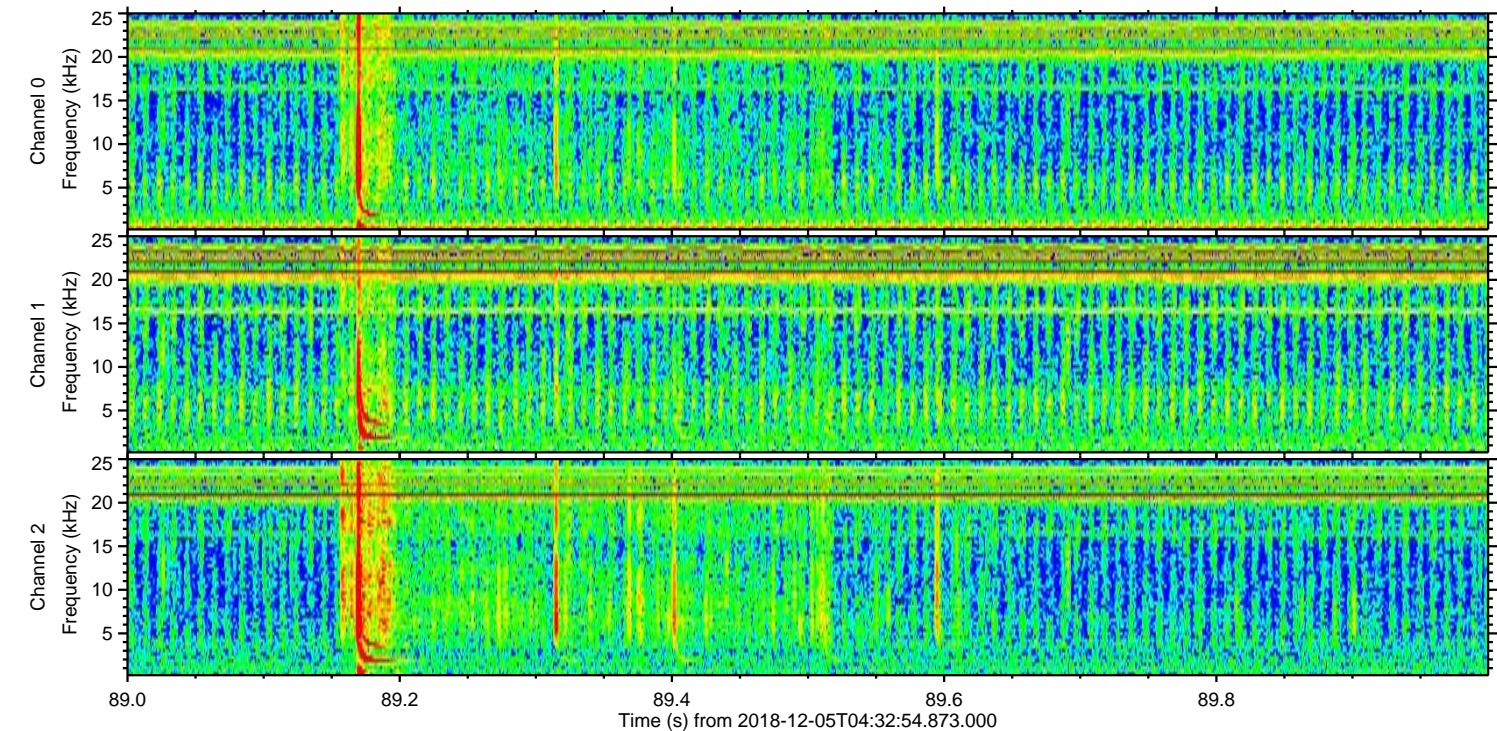
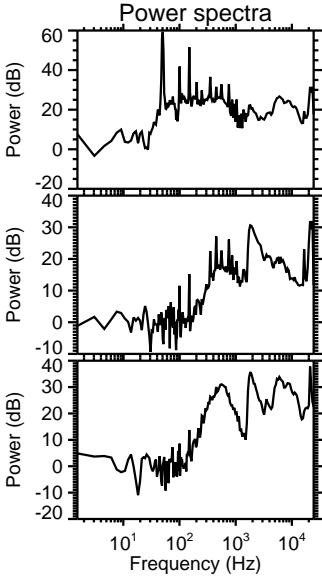
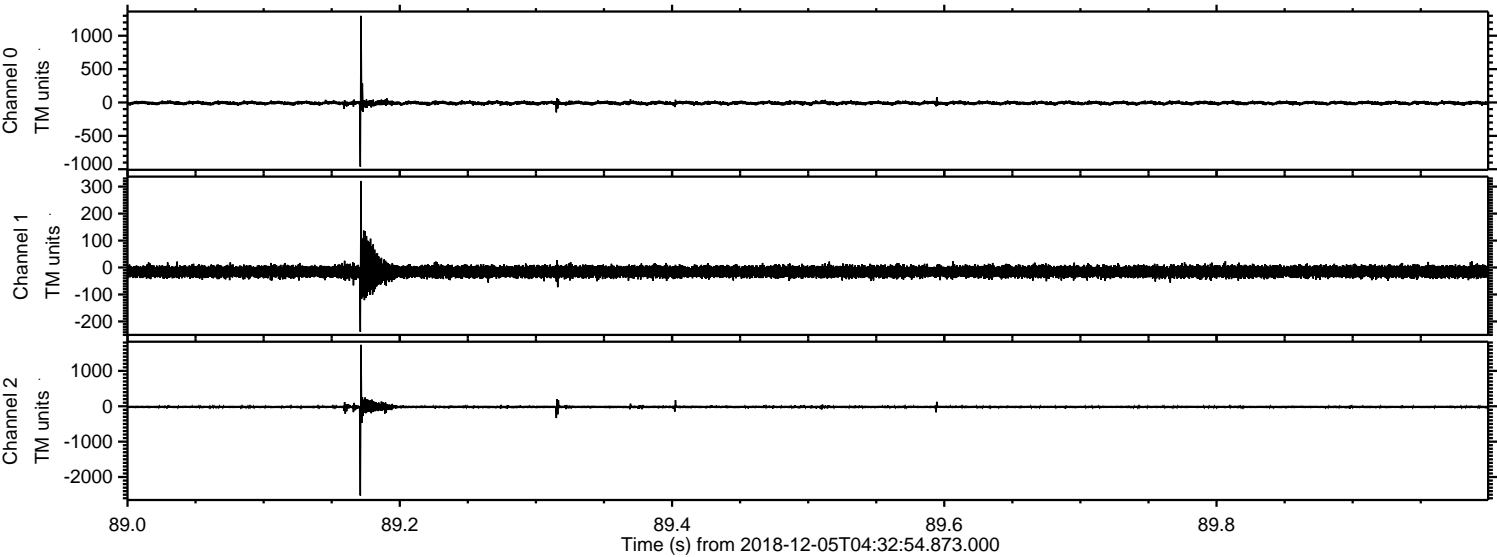


Processed Wed Dec 5 05:41:13 2018 by ELM ver.2012-10-06 from 001\_\_elm20181205\_043253\_\_dat00.bin





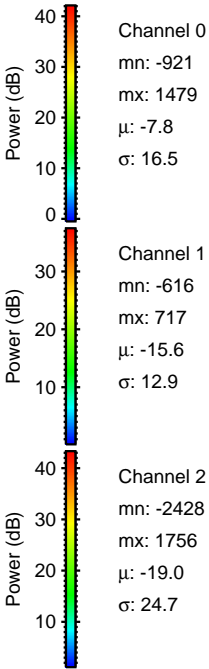
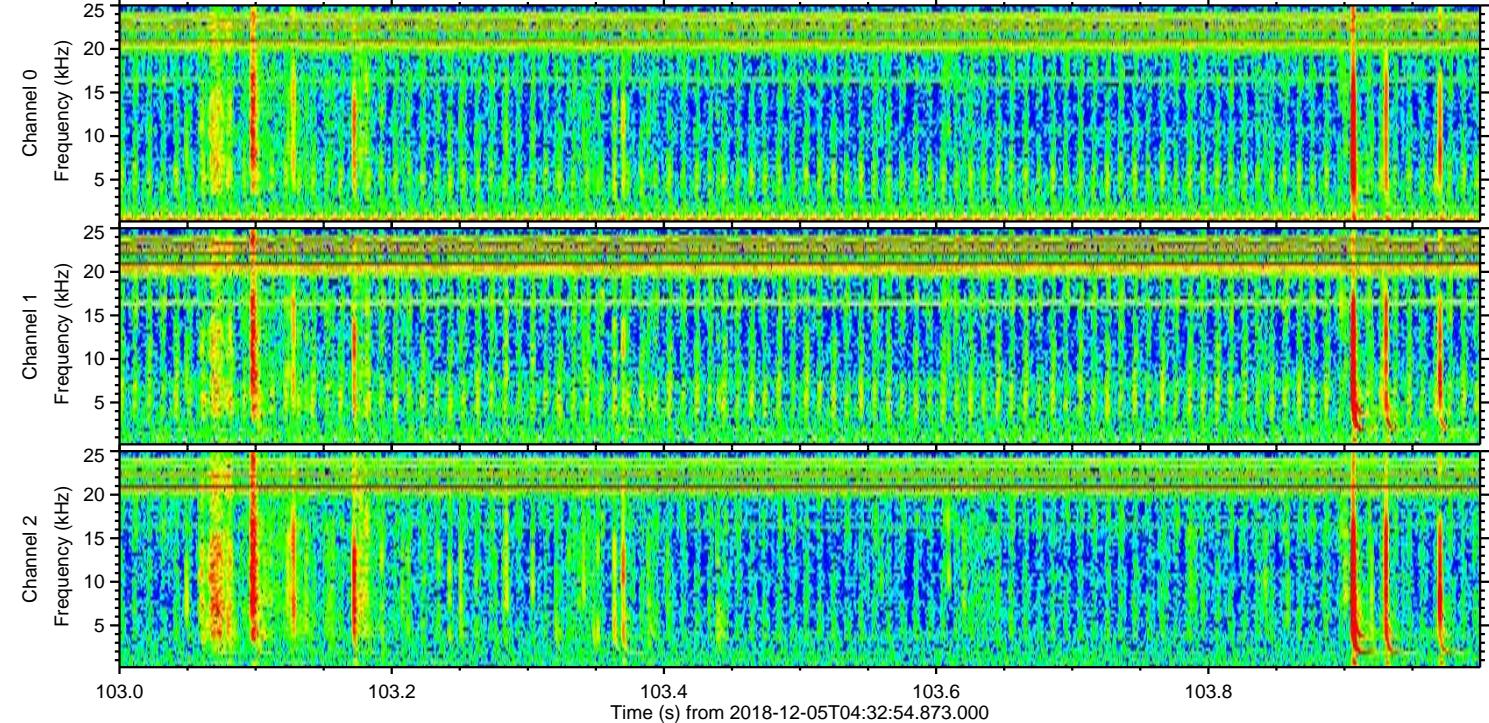
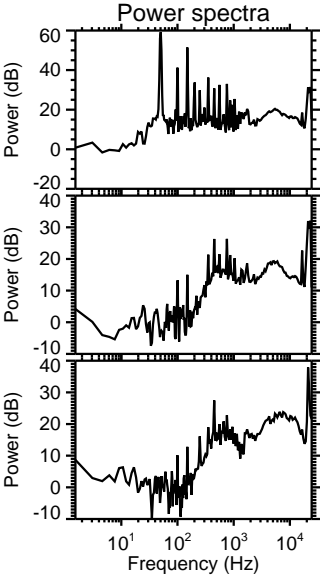
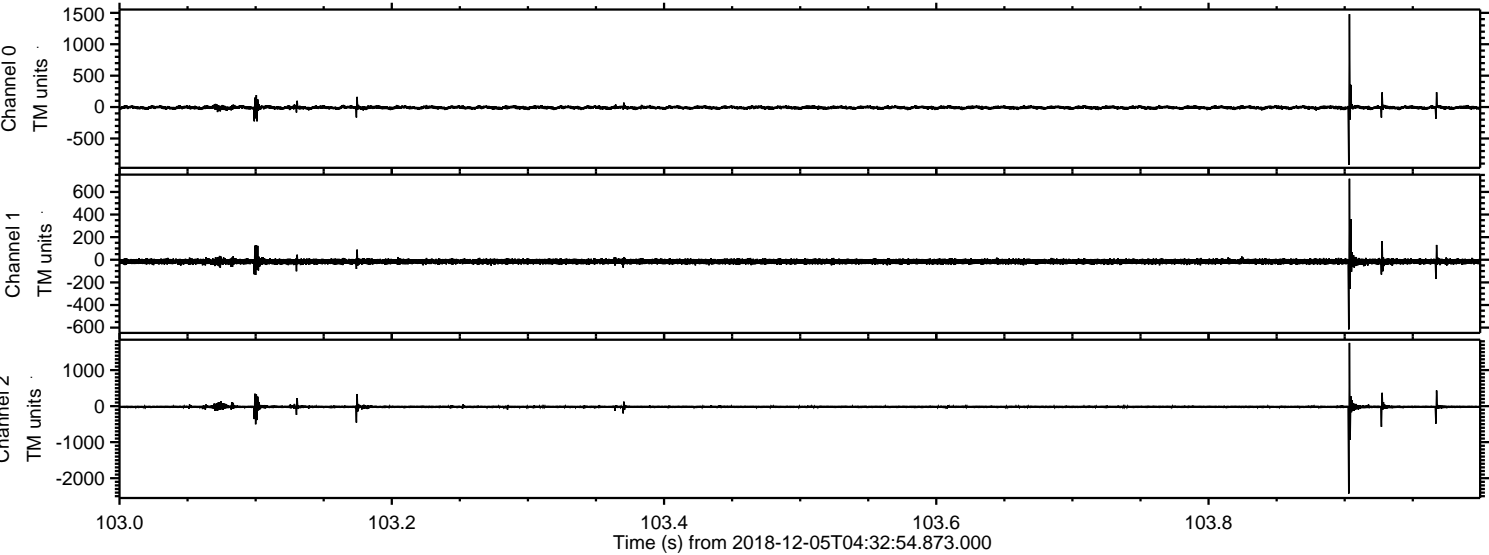
Processed Wed Dec 5 05:41:14 2018 by ELM ver.2012-10-06 from 001\_\_elm20181205\_043253\_\_dat00.bin





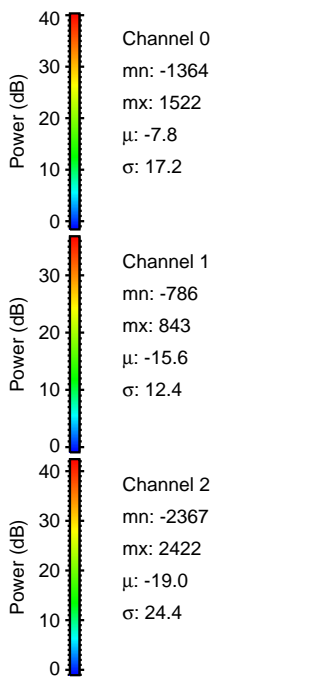
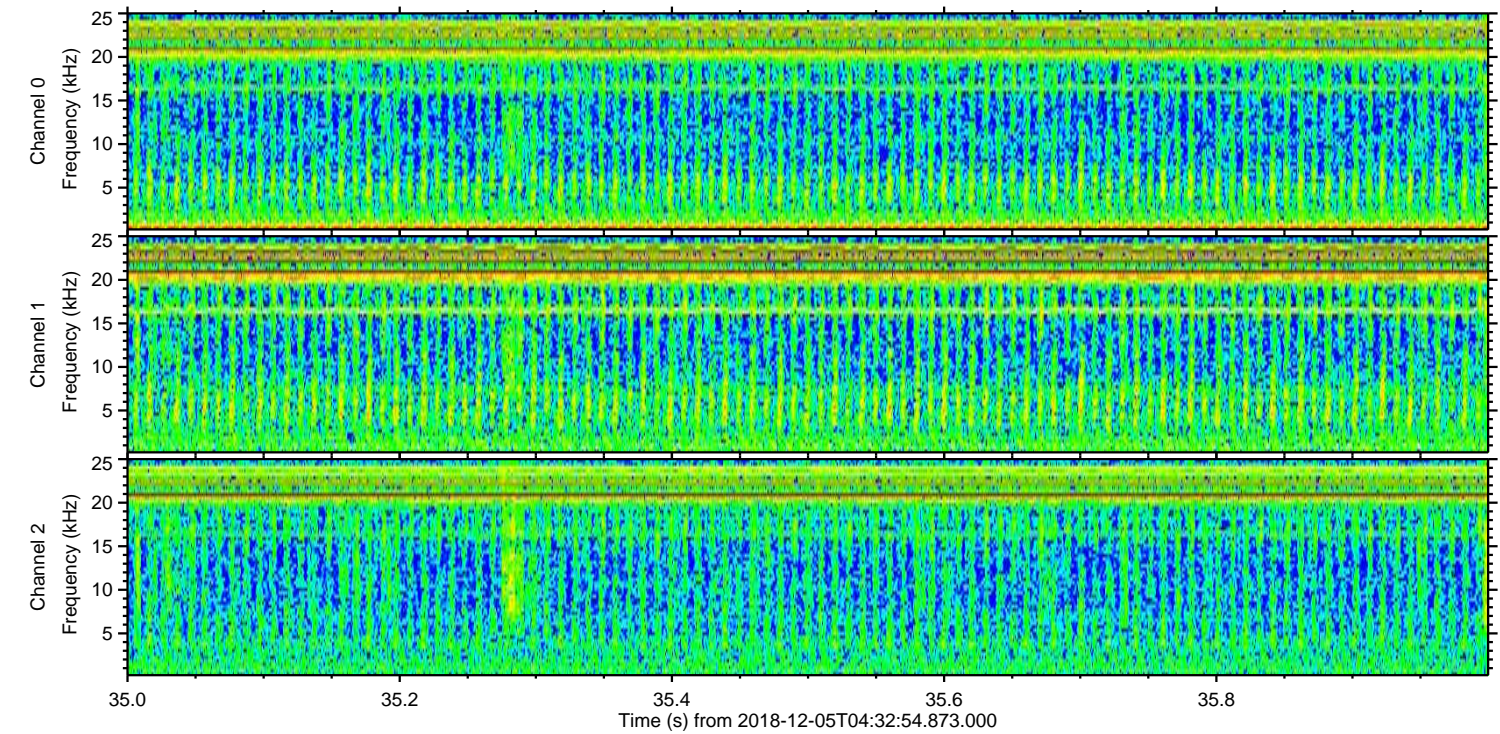
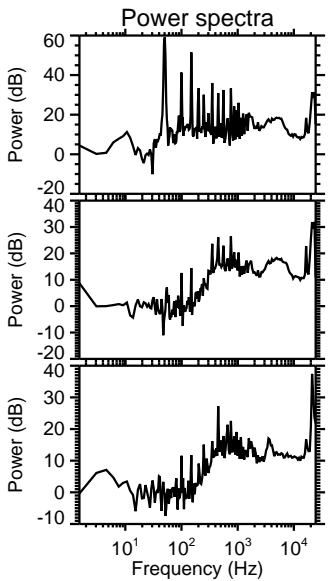
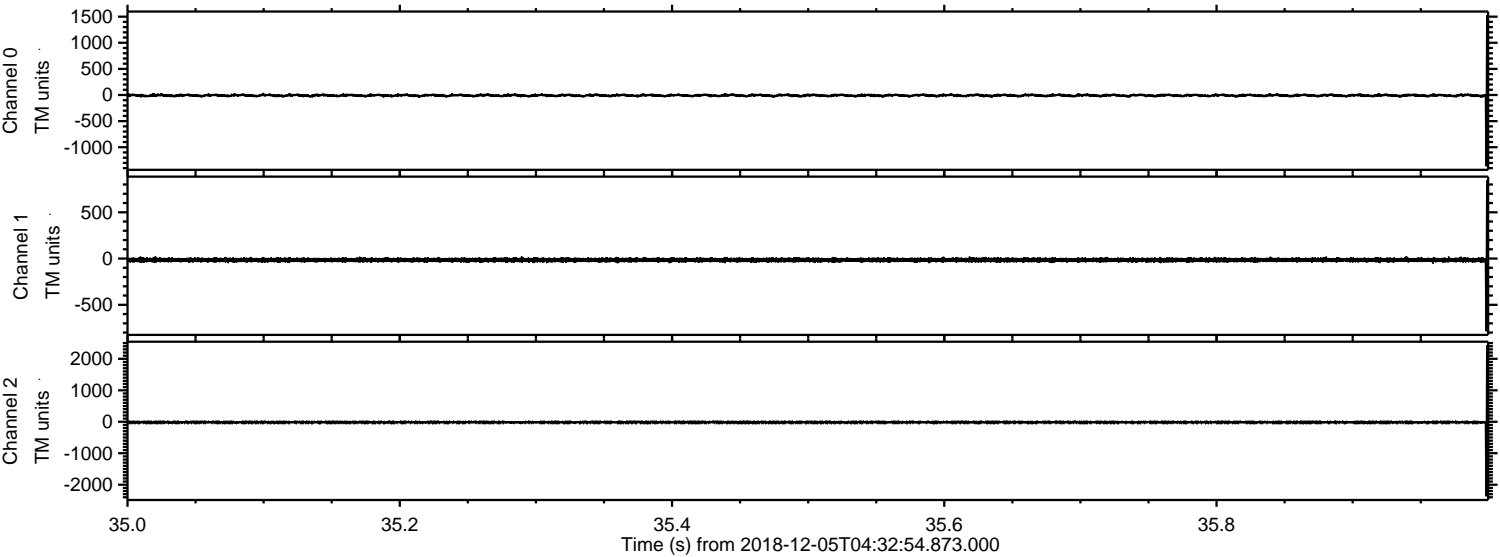
ELMAVAN 3D WAVEFORMS (Measured data sampled at 50 kHz) 51000 packets of 144 samples from 2018-12-05T04:32:54.873.000. Part 104/147

Processed Wed Dec 5 05:41:15 2018 by ELM ver.2012-10-06 from 001\_\_elm20181205\_043253\_\_dat00.bin





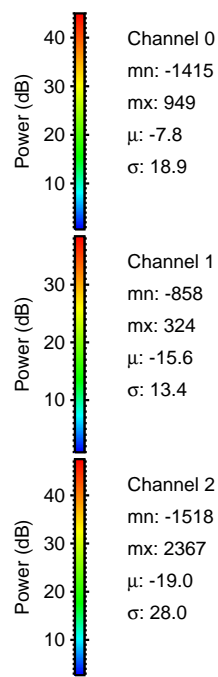
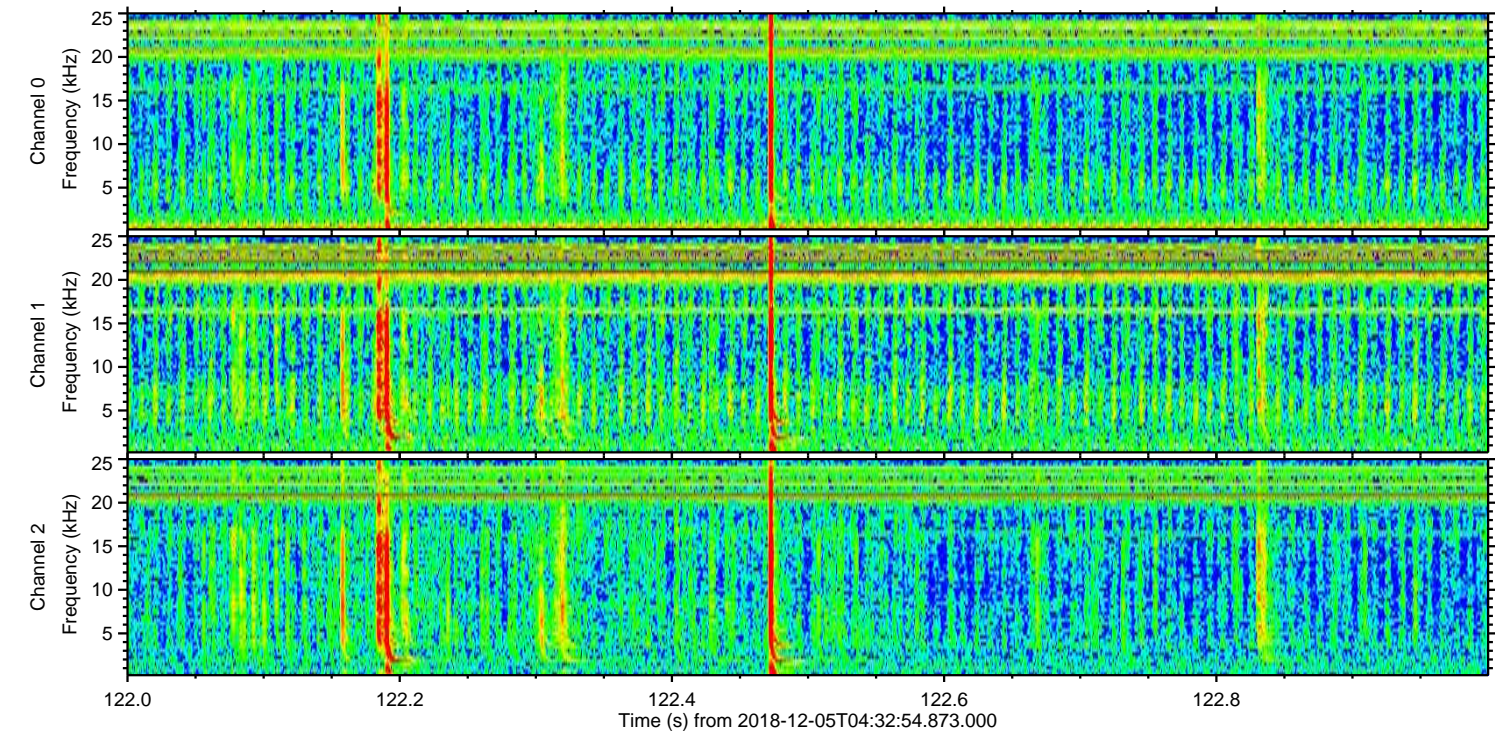
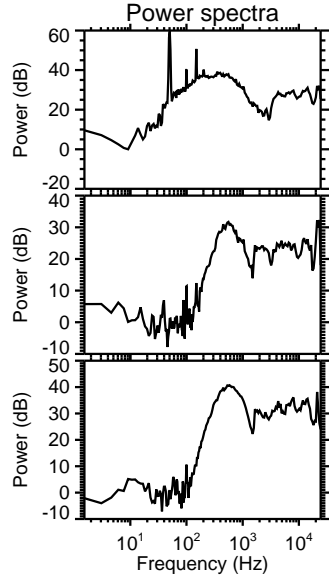
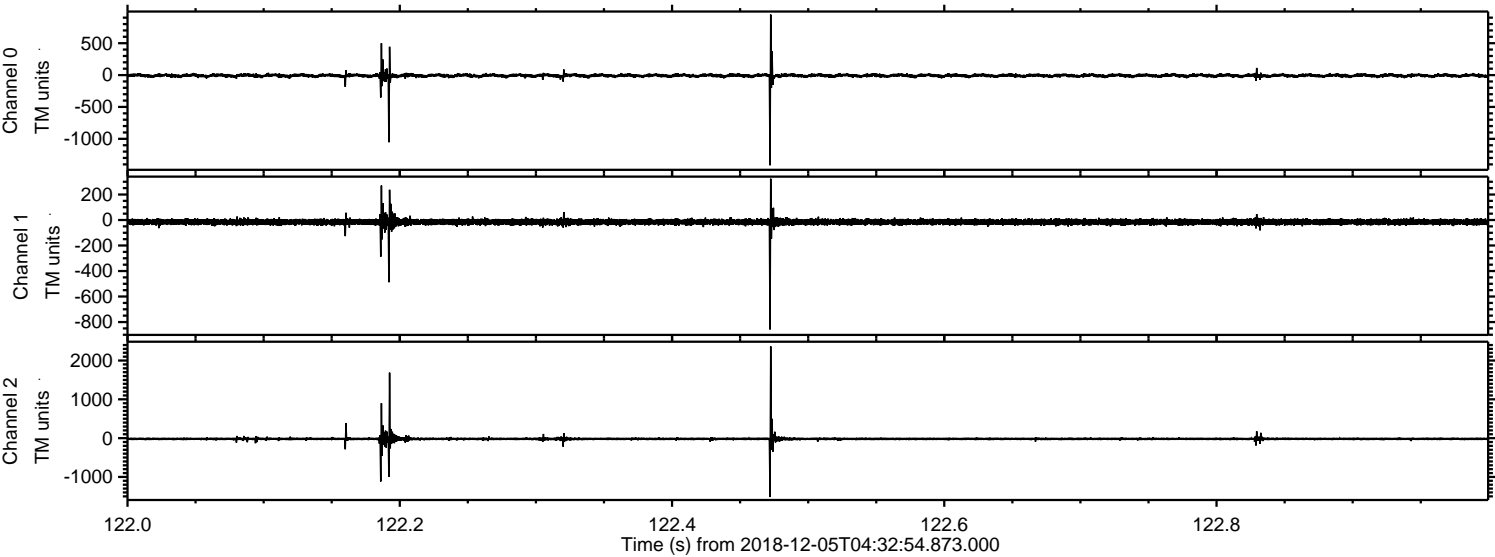
Processed Wed Dec 5 05:41:15 2018 by ELM ver.2012-10-06 from 001\_\_elm20181205\_043253\_\_dat00.bin





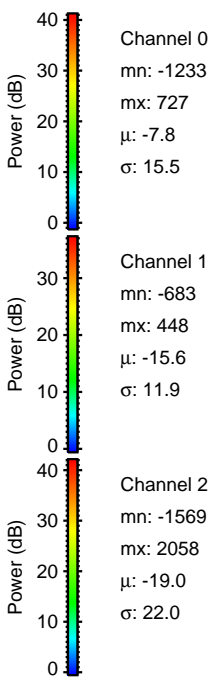
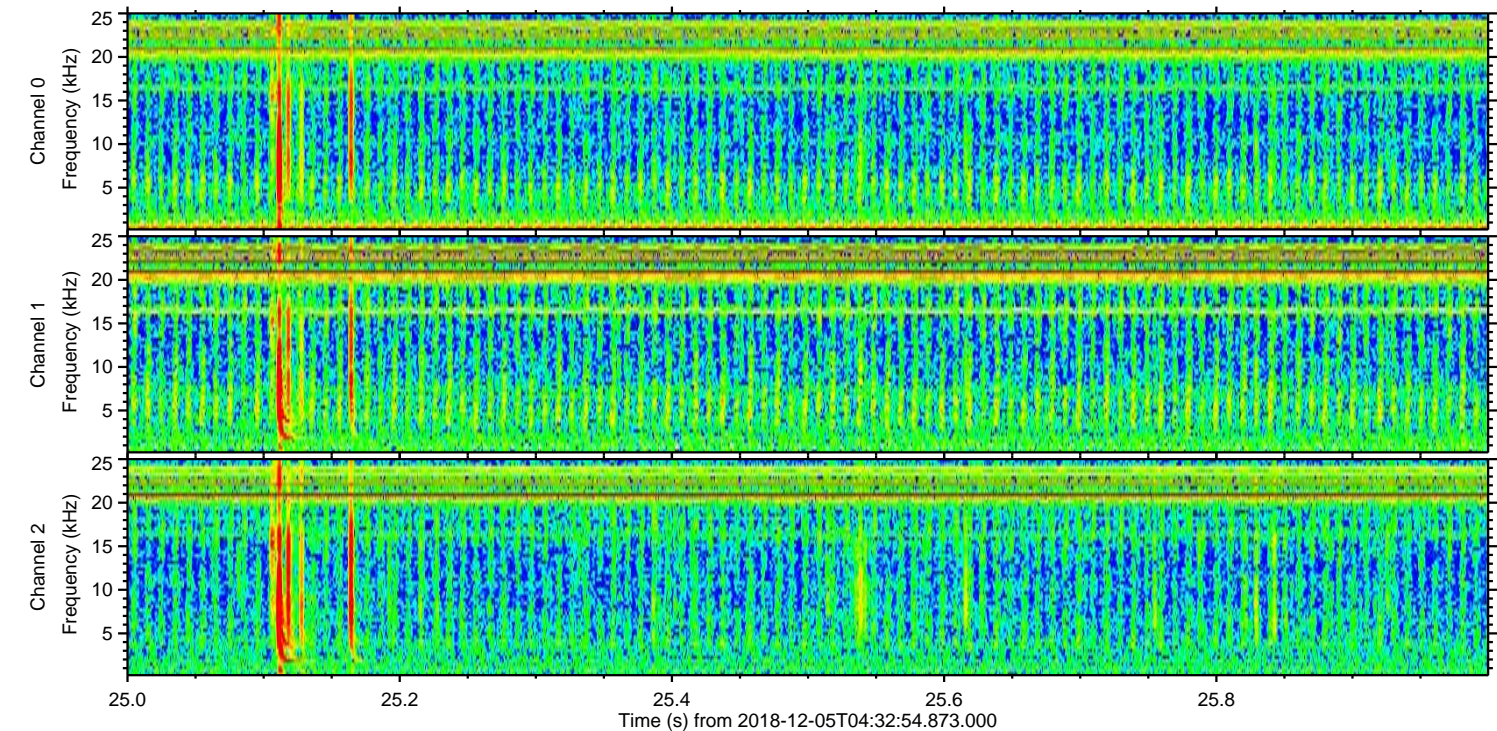
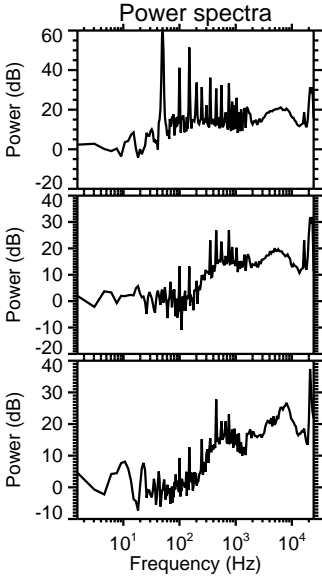
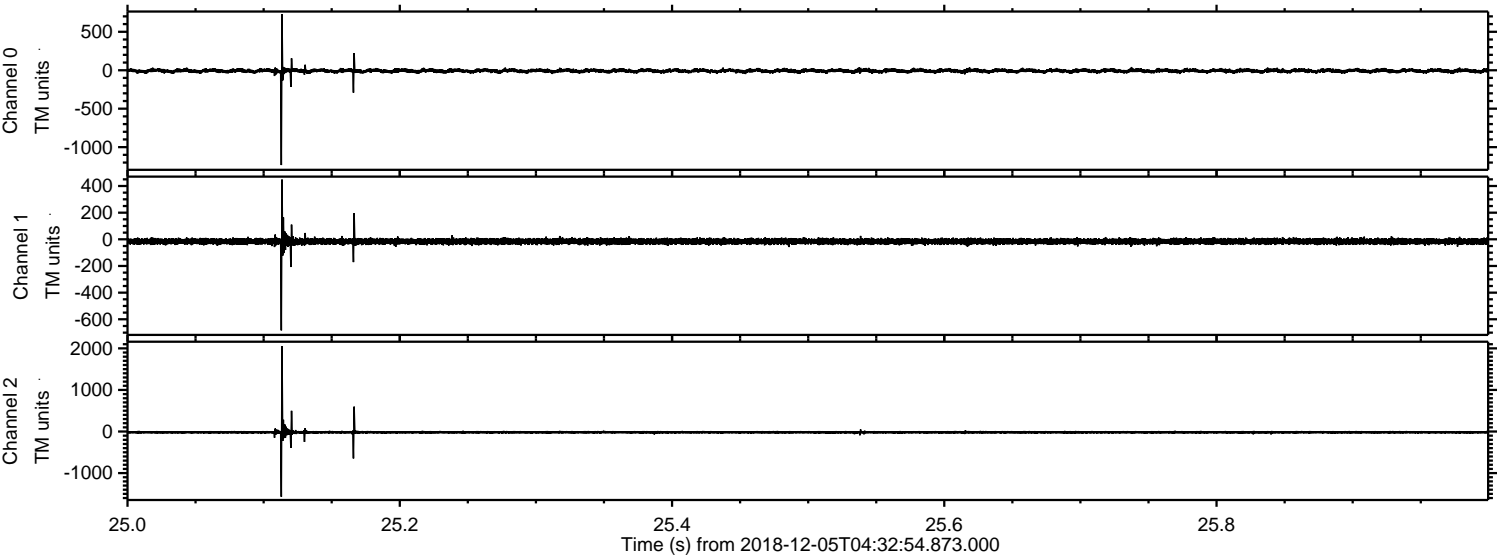
ELMAVAN 3D WAVEFORMS (Measured data sampled at 50 kHz) 51000 packets of 144 samples from 2018-12-05T04:32:54.873.000. Part 123/147

Processed Wed Dec 5 05:41:16 2018 by ELM ver.2012-10-06 from 001\_\_elm20181205\_043253\_\_dat00.bin



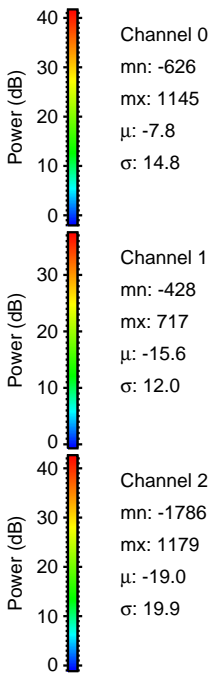
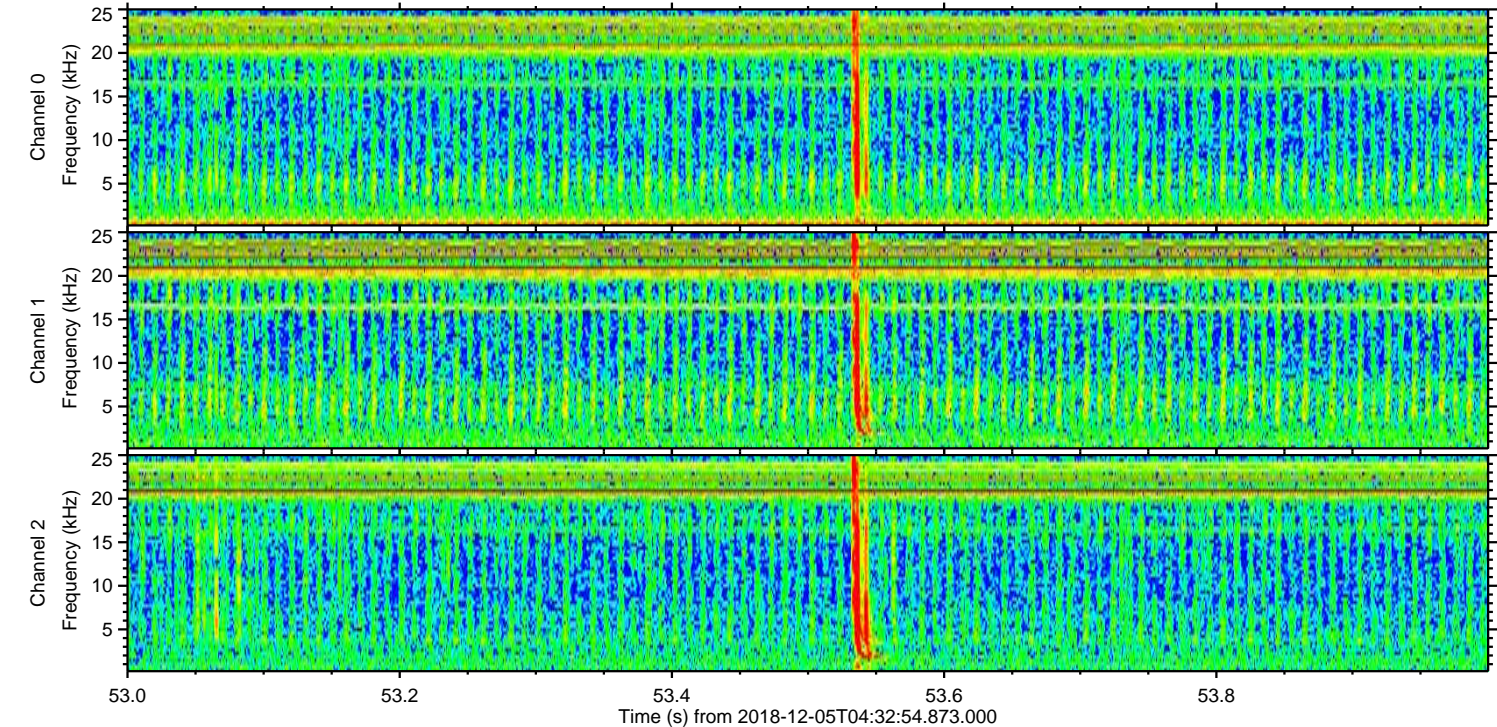
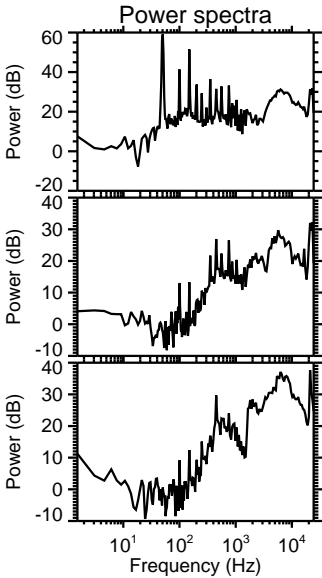
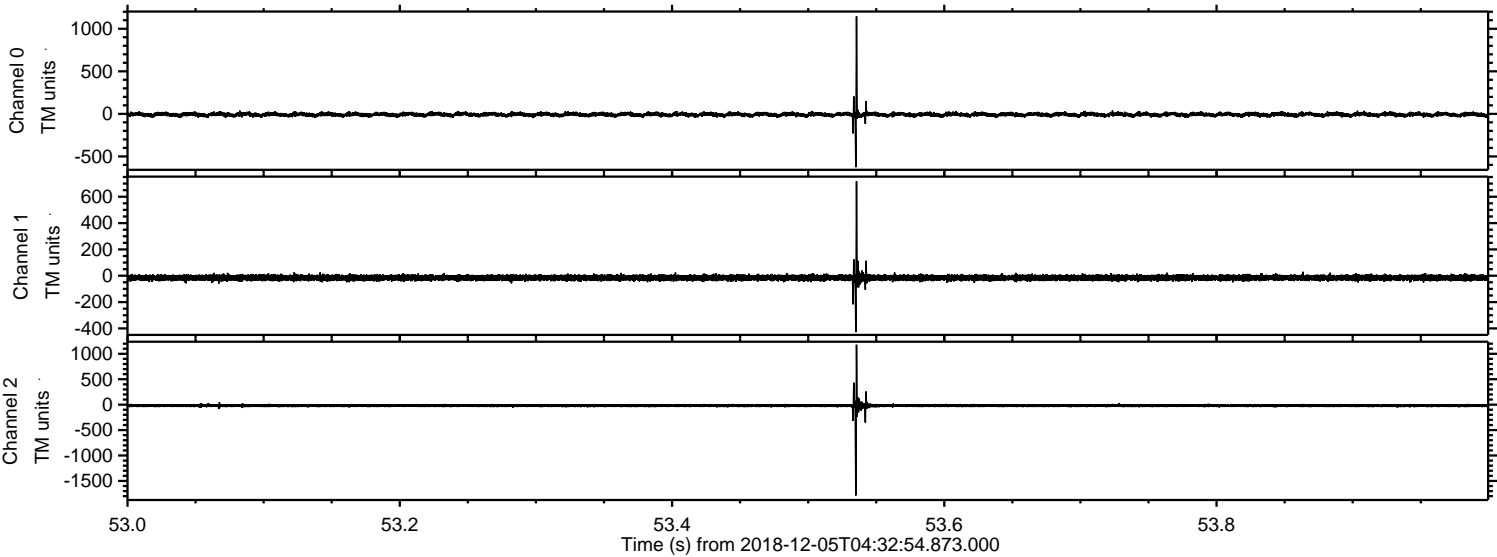


Processed Wed Dec 5 05:41:16 2018 by ELM ver.2012-10-06 from 001\_\_elm20181205\_043253\_\_dat00.bin





Processed Wed Dec 5 05:41:17 2018 by ELM ver.2012-10-06 from 001\_\_elm20181205\_043253\_\_dat00.bin





Processed Wed Dec 5 05:41:18 2018 by ELM ver.2012-10-06 from 001\_\_elm20181205\_043253\_\_dat00.bin

