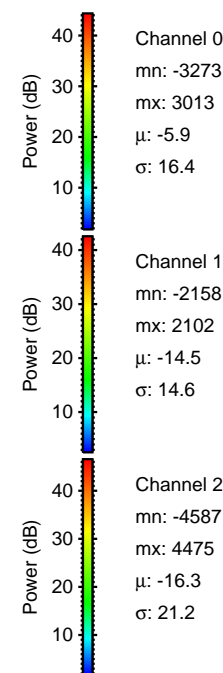
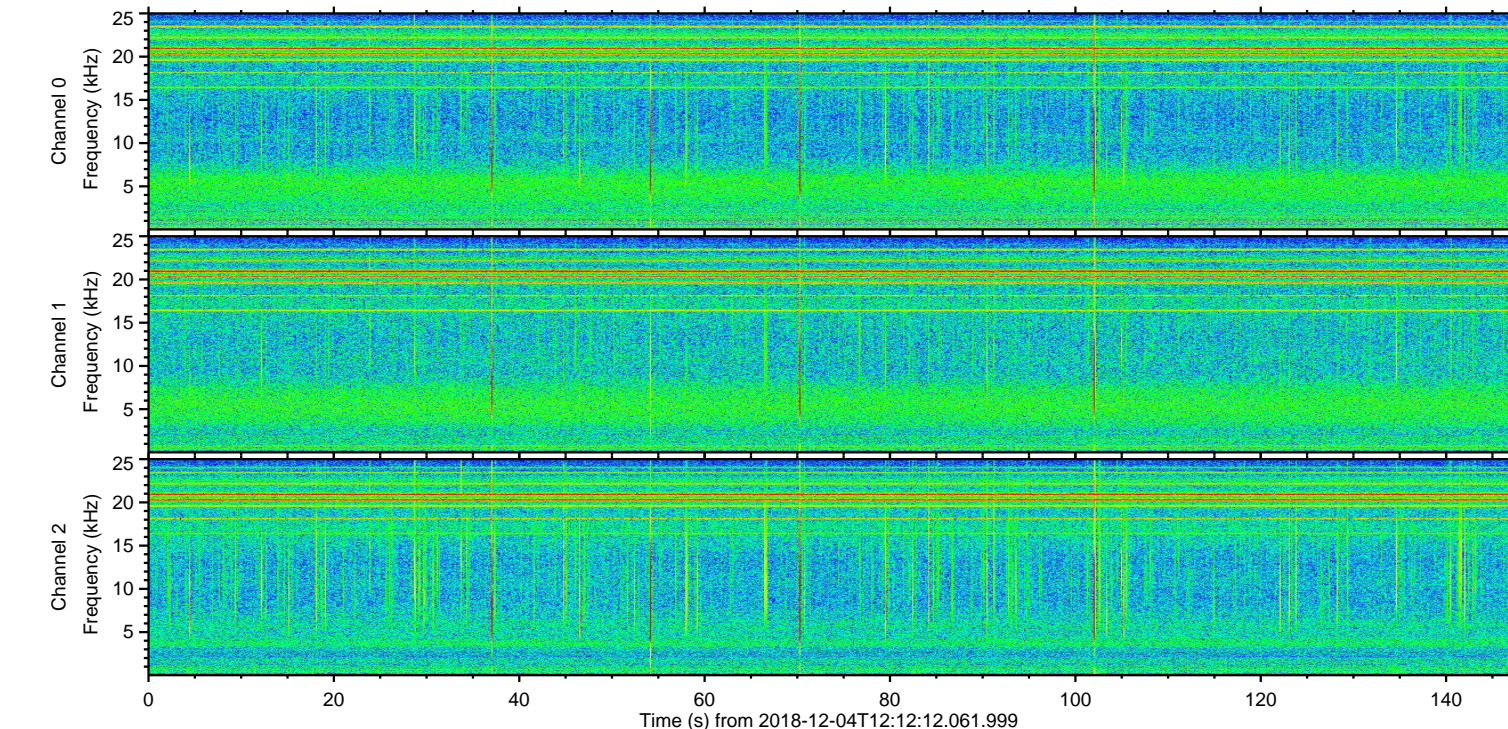
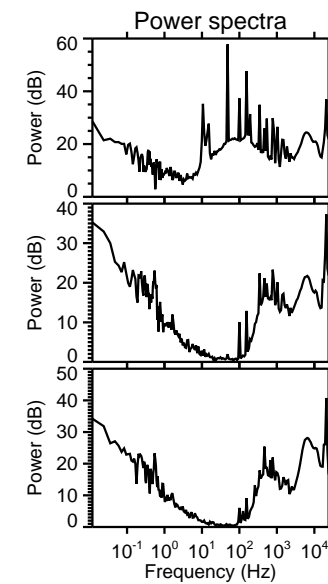
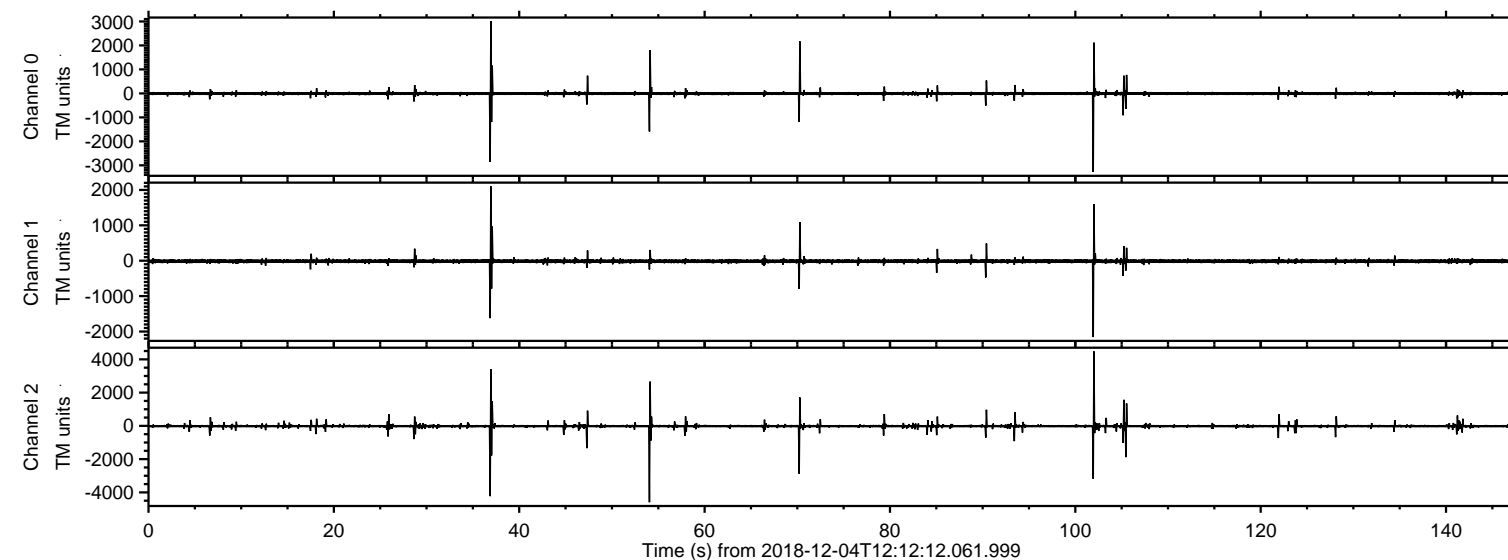
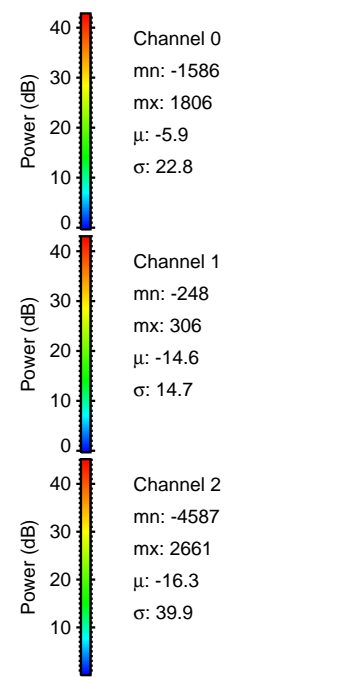
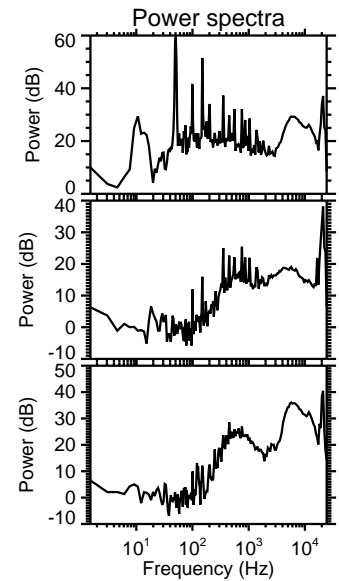
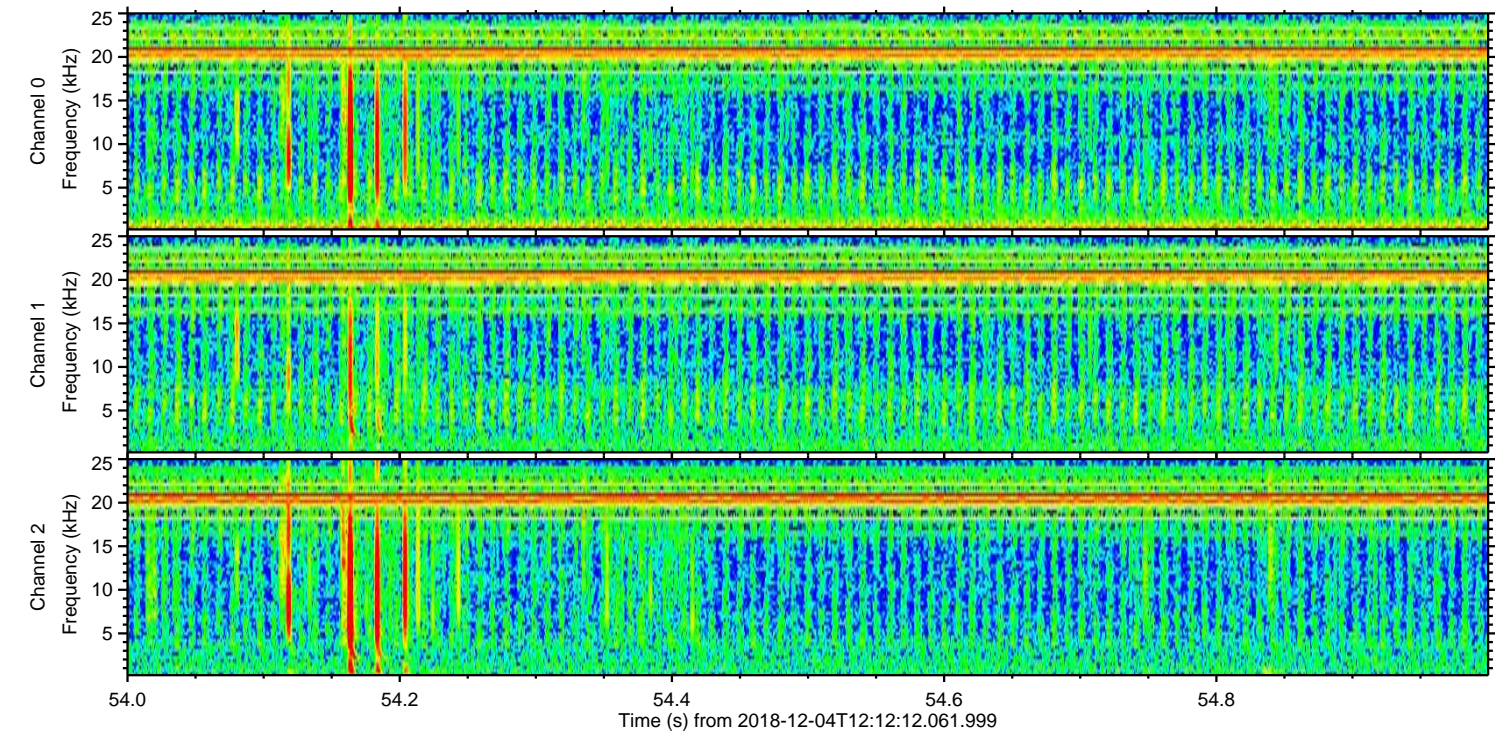
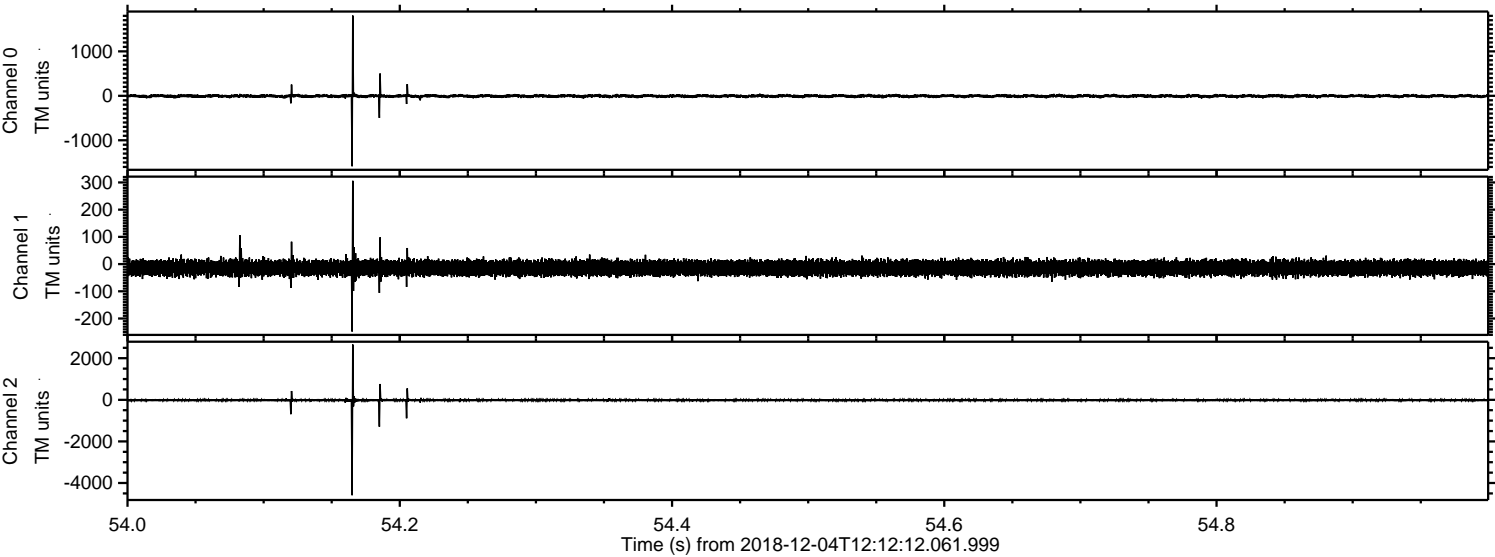


ELMAVAN 3D WAVEFORMS (Measured data sampled at 50 kHz) 51000 packets of 144 samples from 2018-12-04T12:12:12.061.999.

Processed Tue Dec 4 13:20:10 2018 by ELM ver.2012-10-06 from 001__elm20181204_121211__dat00.bin

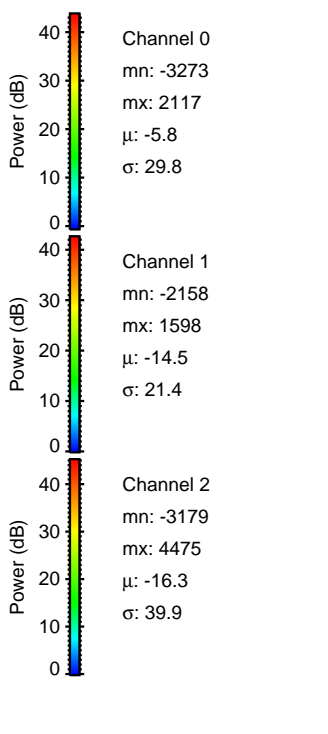
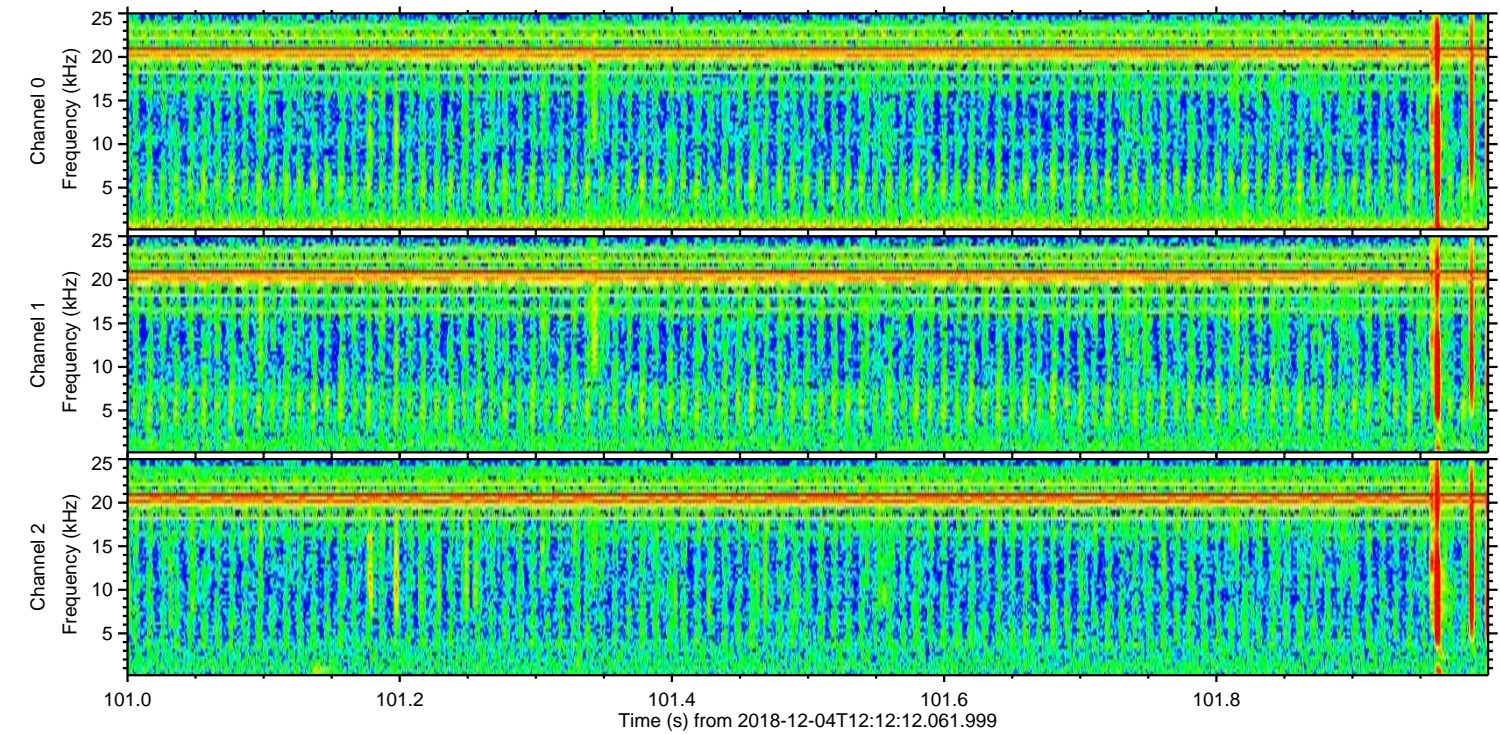
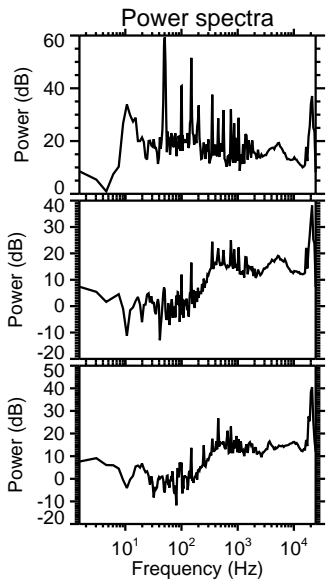
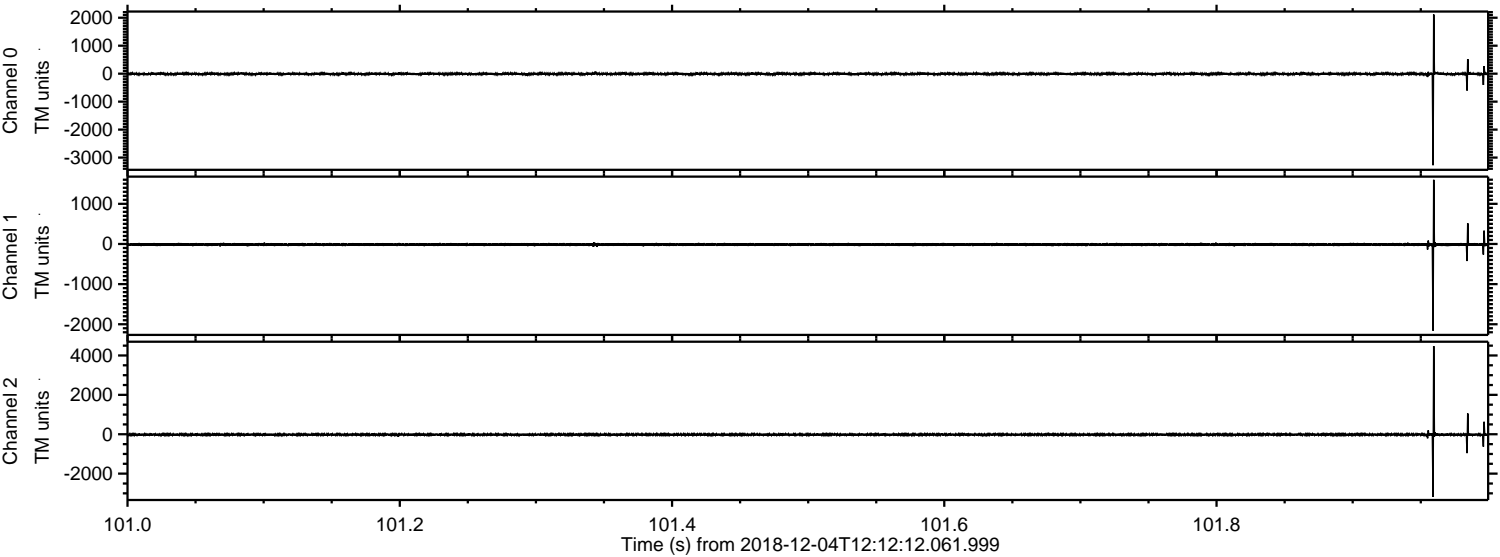


Processed Tue Dec 4 13:20:17 2018 by ELM ver.2012-10-06 from 001__elm20181204_121211__dat00.bin

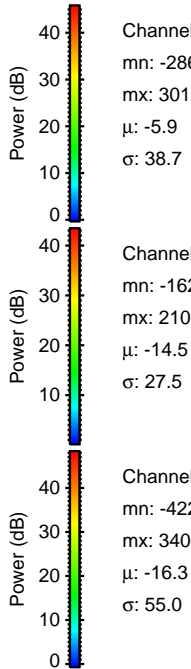
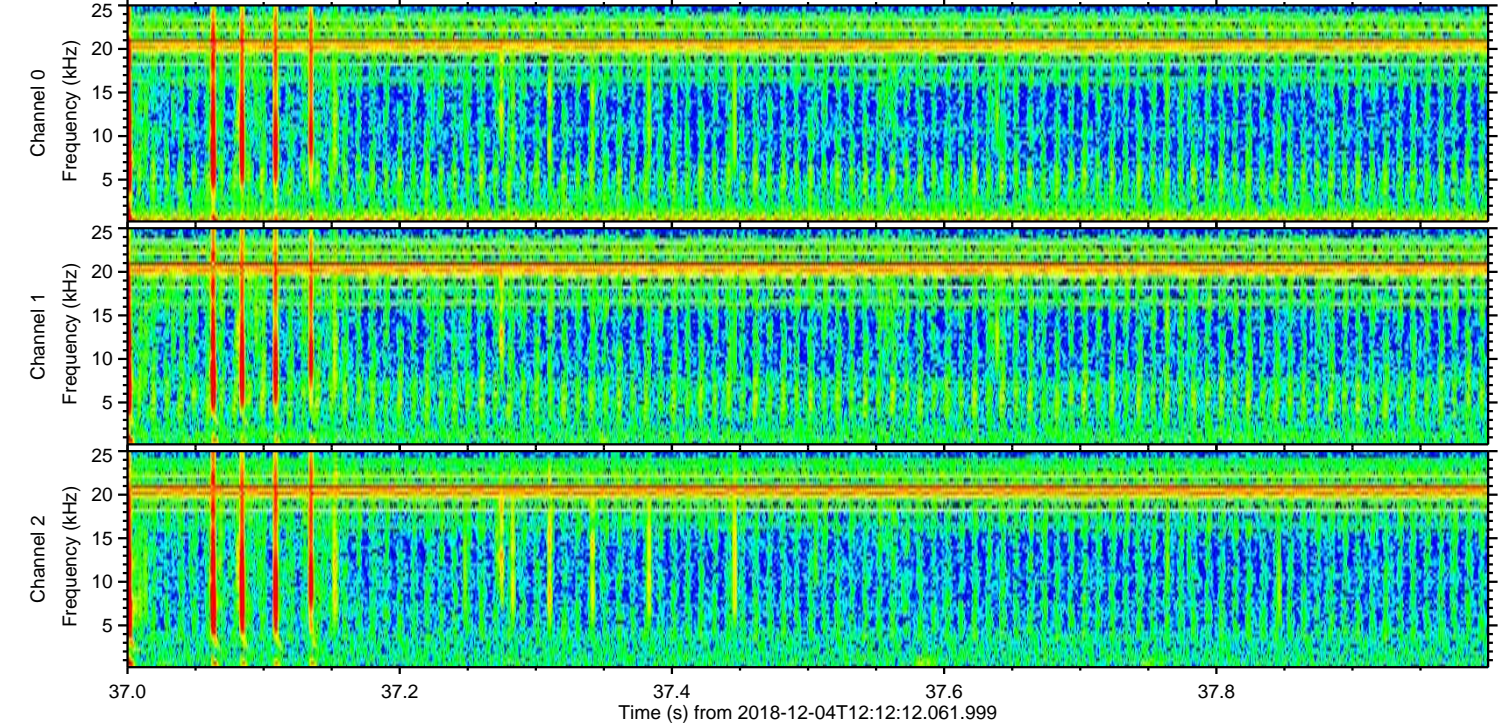
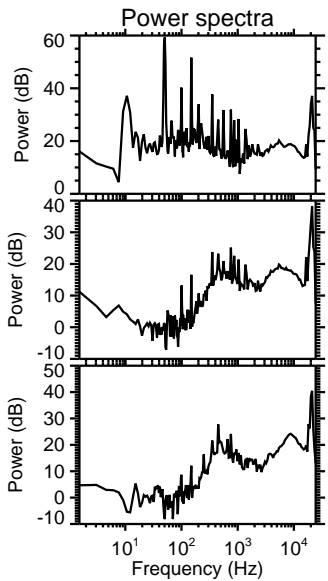
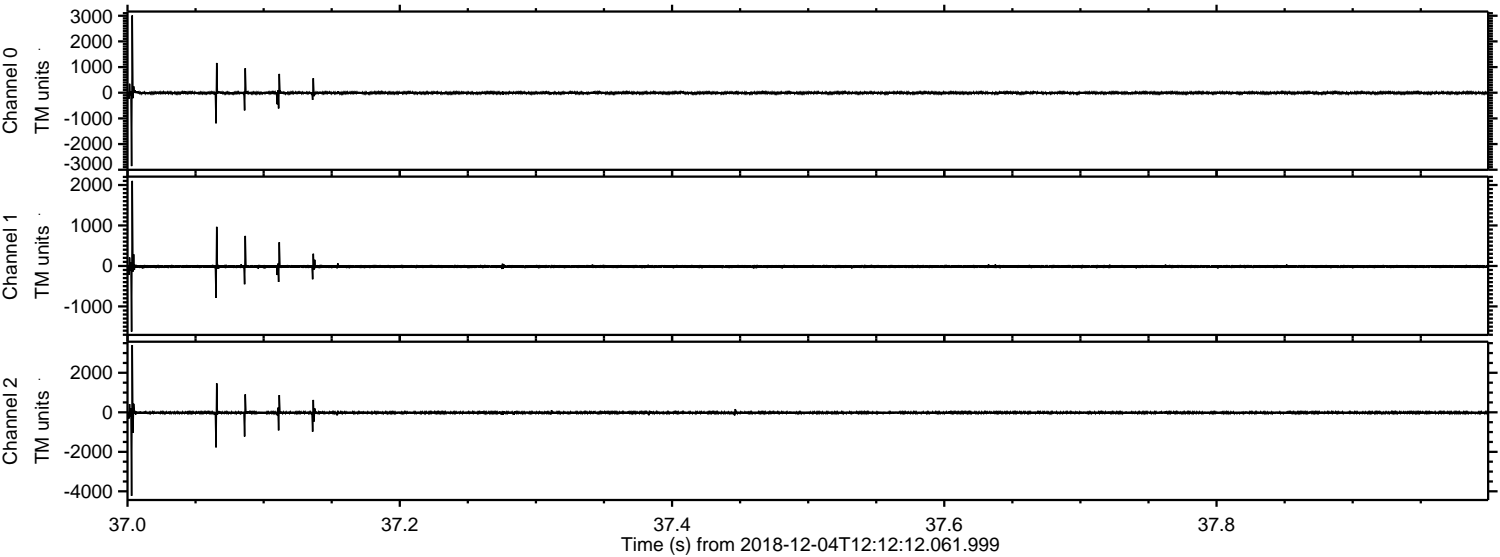


ELMAVAN 3D WAVEFORMS (Measured data sampled at 50 kHz) 51000 packets of 144 samples from 2018-12-04T12:12:12.061.999. Part 102/147

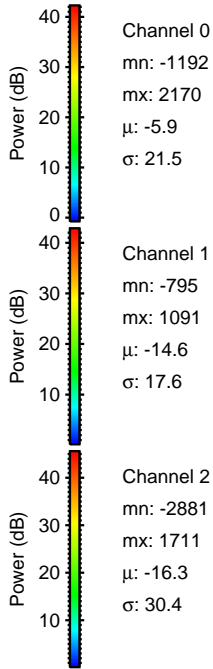
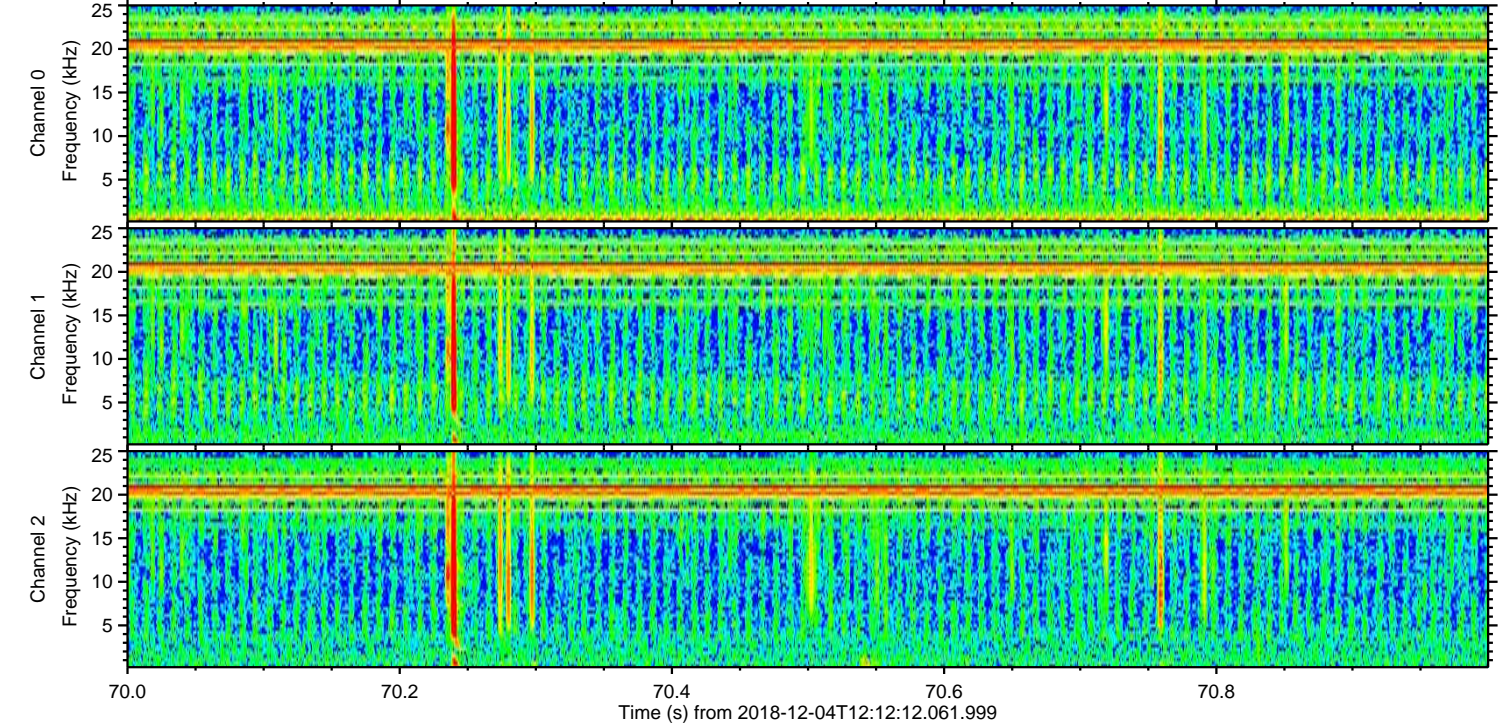
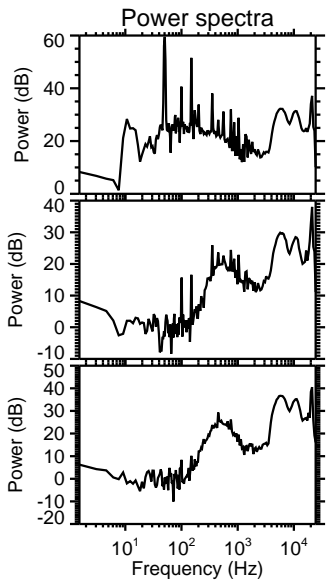
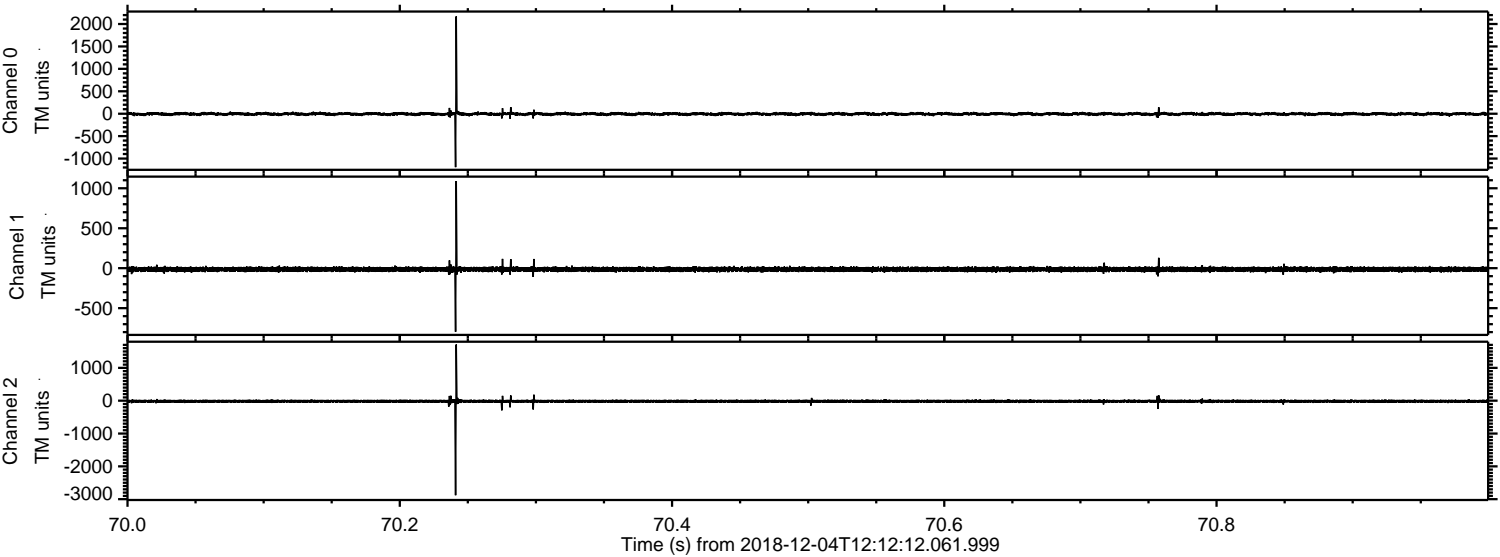
Processed Tue Dec 4 13:20:17 2018 by ELM ver.2012-10-06 from 001__elm20181204_121211__dat00.bin



Processed Tue Dec 4 13:20:18 2018 by ELM ver.2012-10-06 from 001__elm20181204_121211__dat00.bin

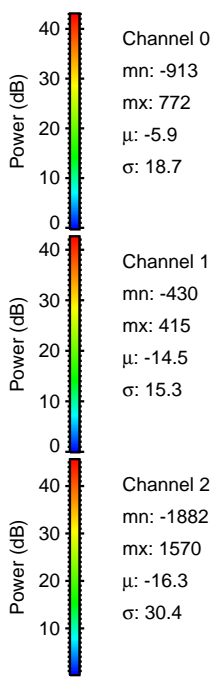
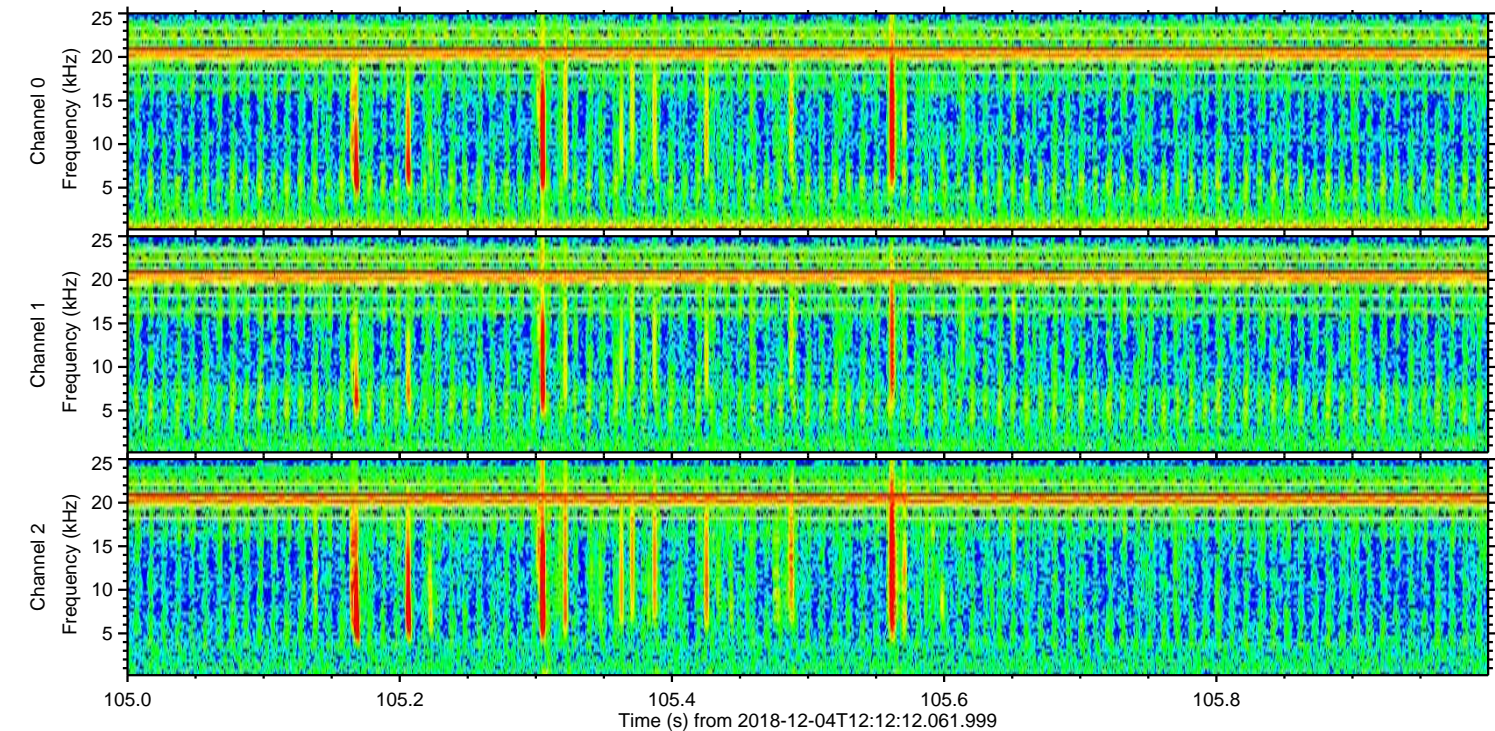
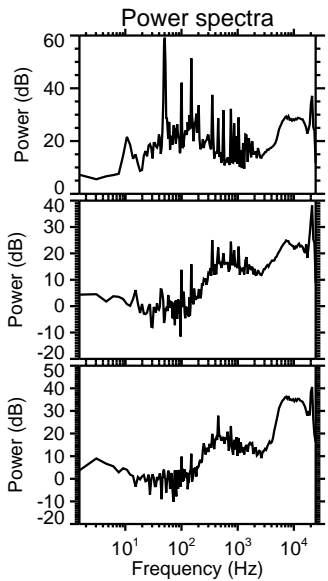
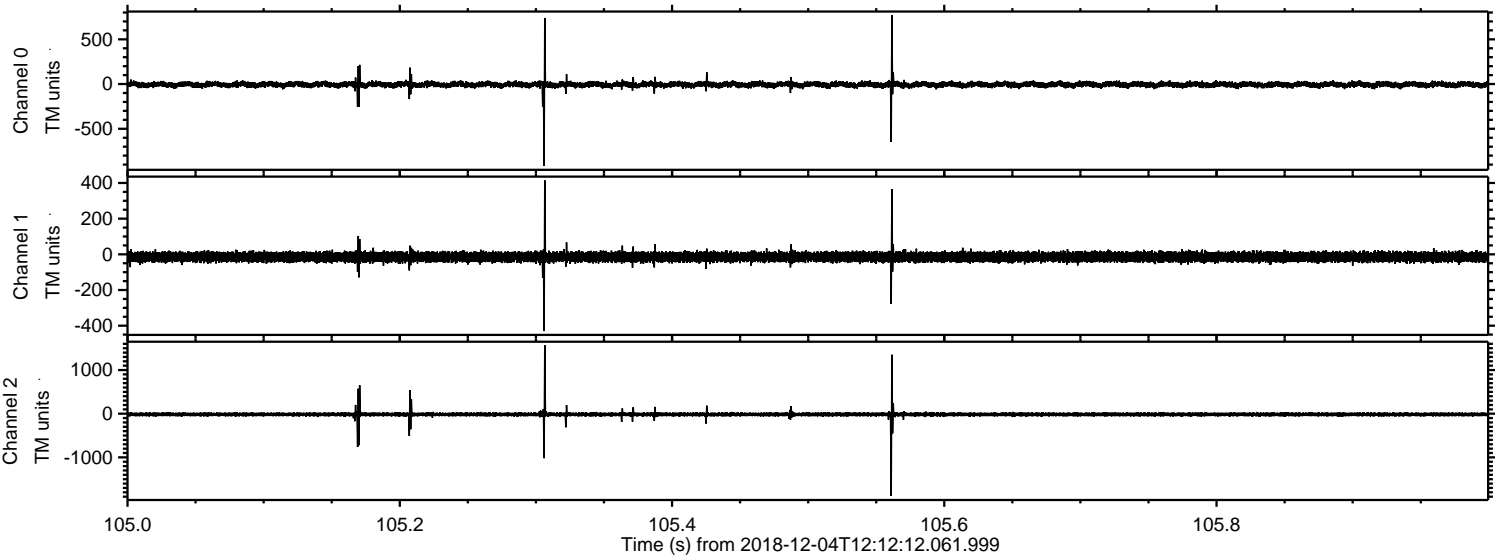


Processed Tue Dec 4 13:20:19 2018 by ELM ver.2012-10-06 from 001__elm20181204_121211__dat00.bin

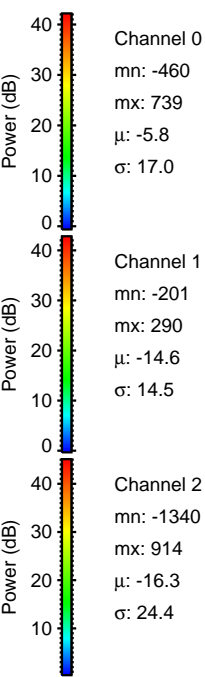
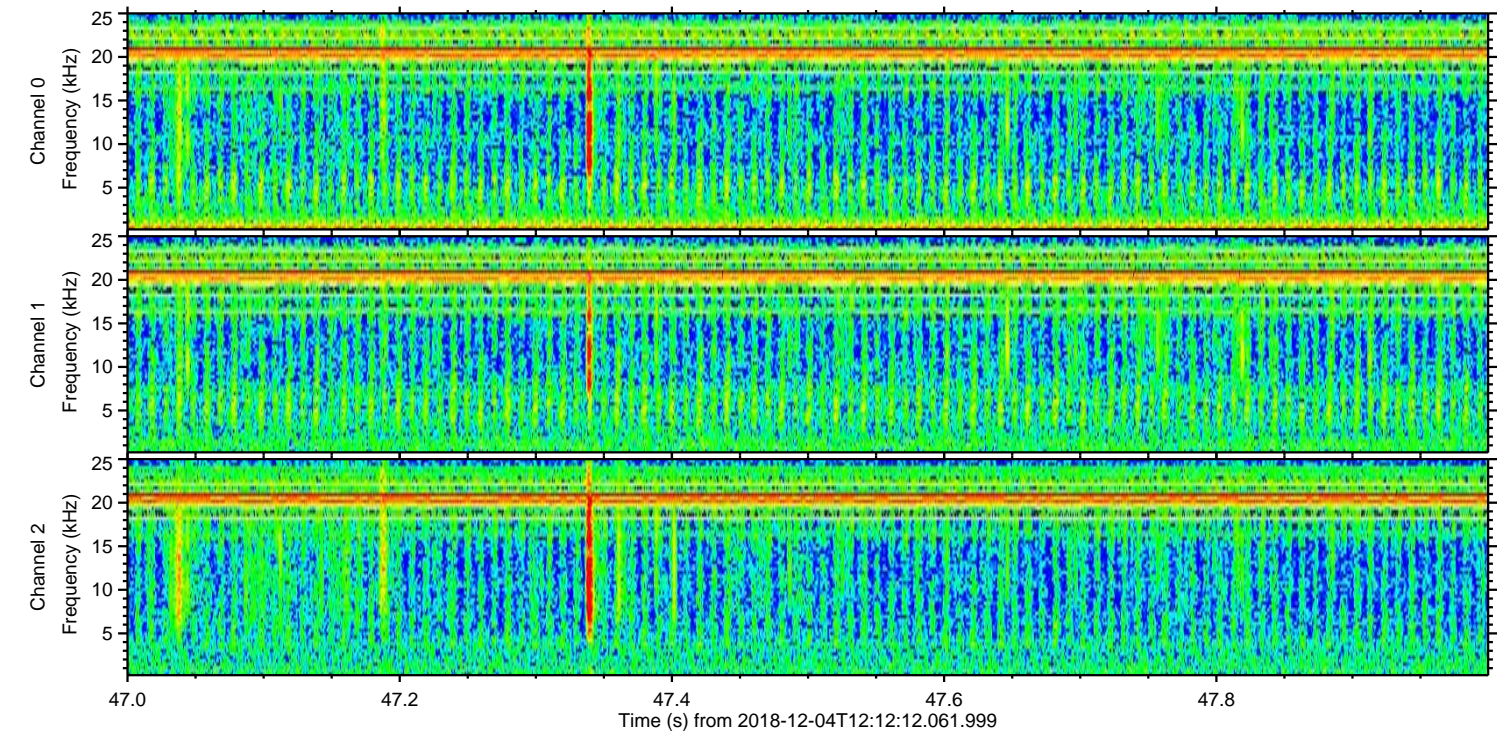
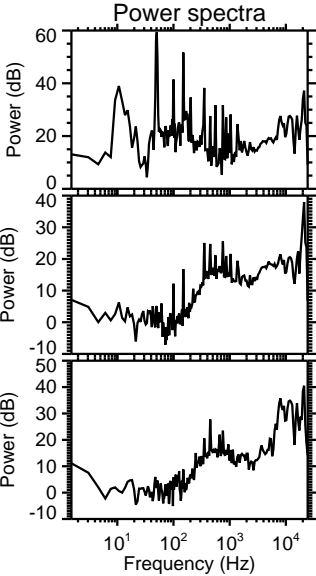
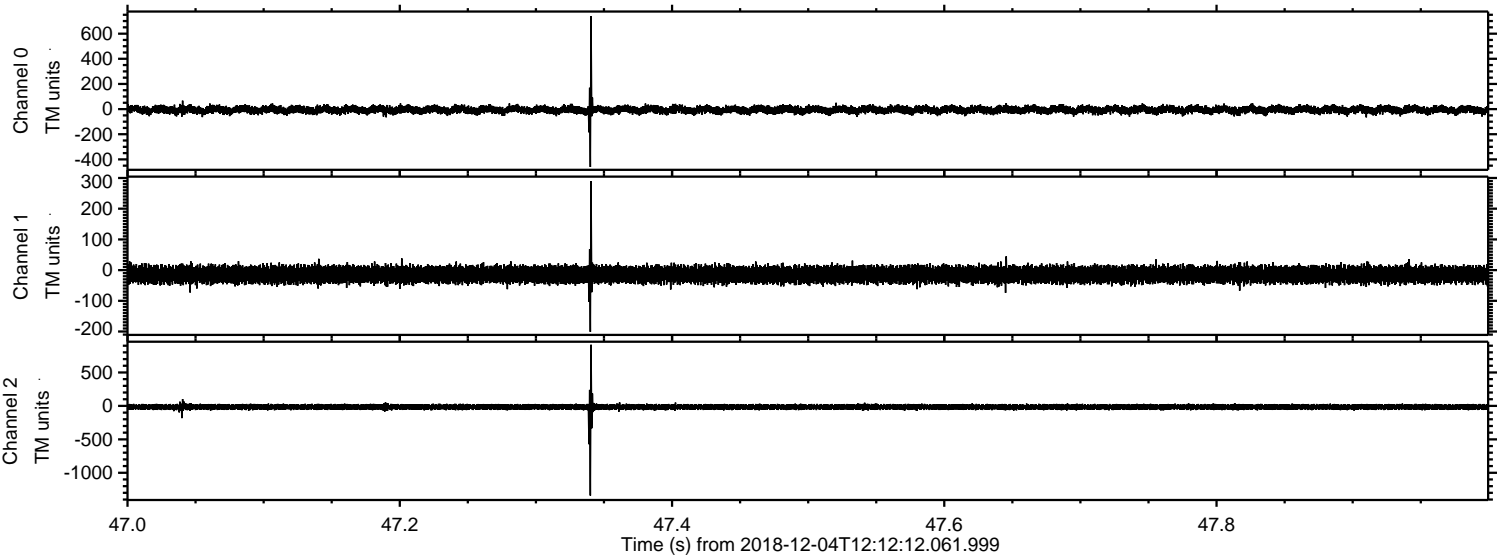


ELMAVAN 3D WAVEFORMS (Measured data sampled at 50 kHz) 51000 packets of 144 samples from 2018-12-04T12:12:12.061.999. Part 106/147

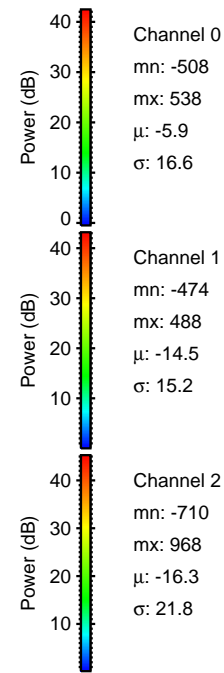
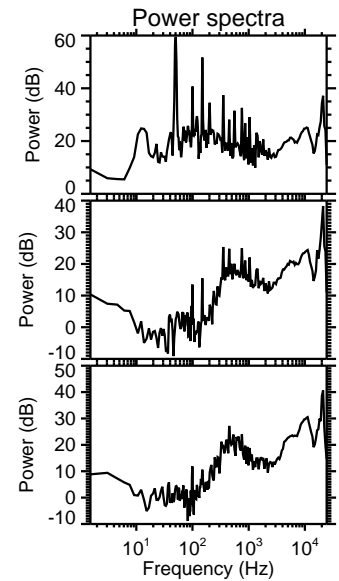
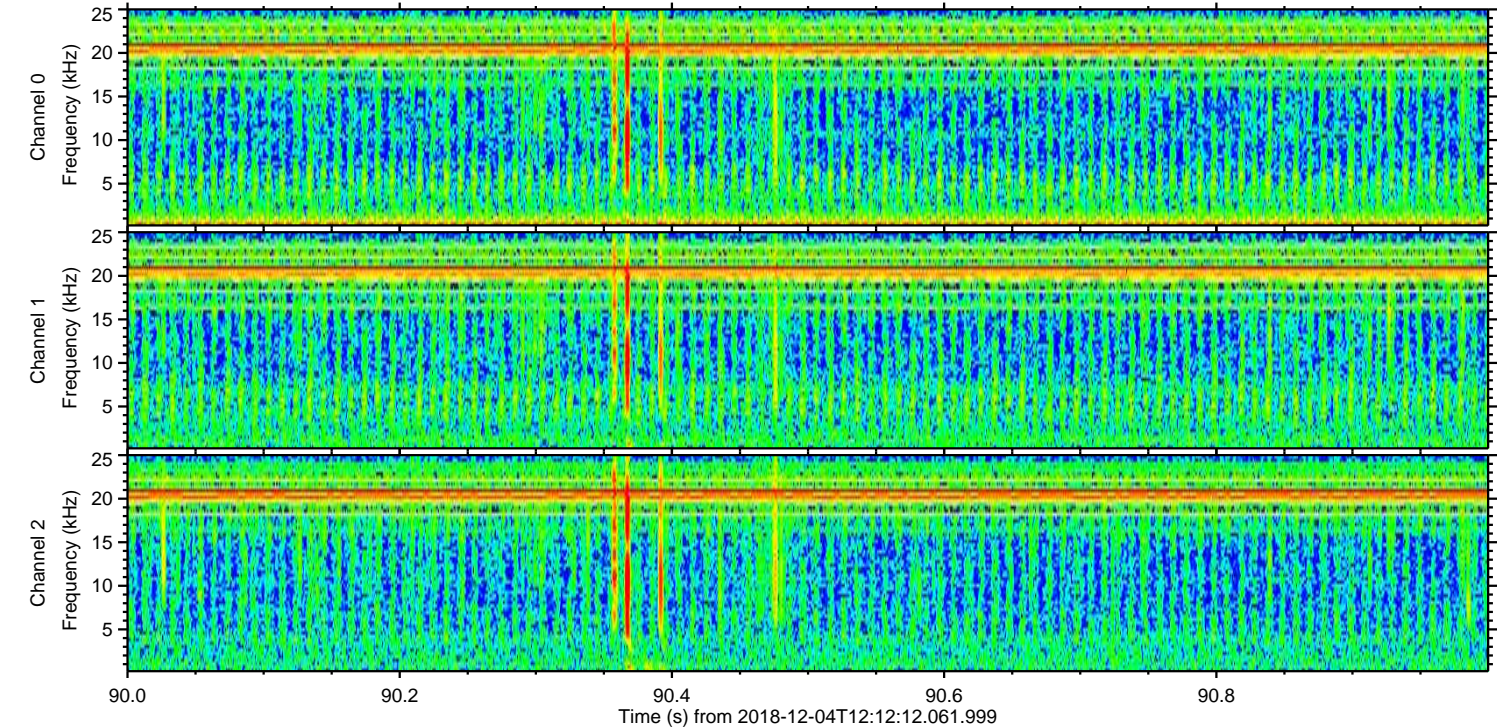
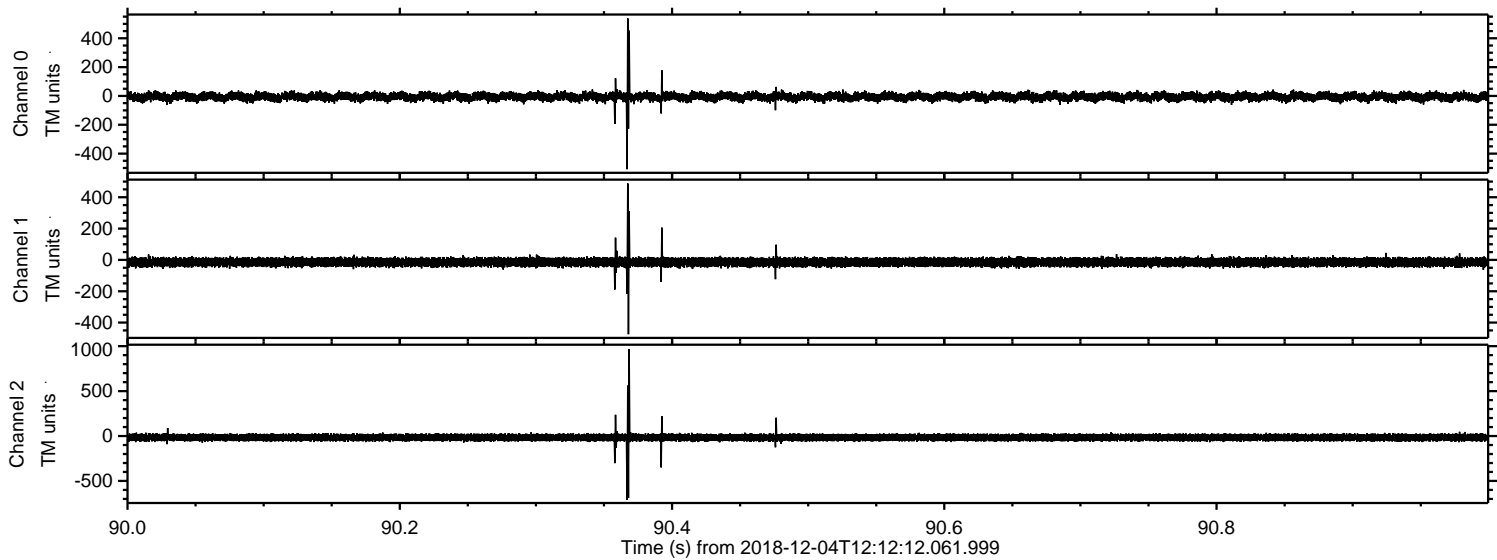
Processed Tue Dec 4 13:20:20 2018 by ELM ver.2012-10-06 from 001__elm20181204_121211__dat00.bin



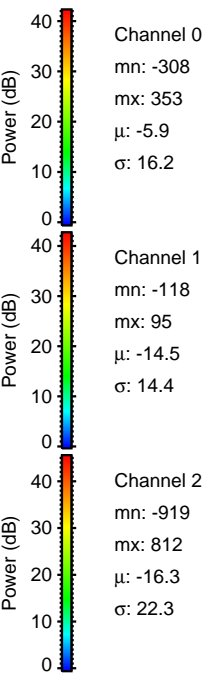
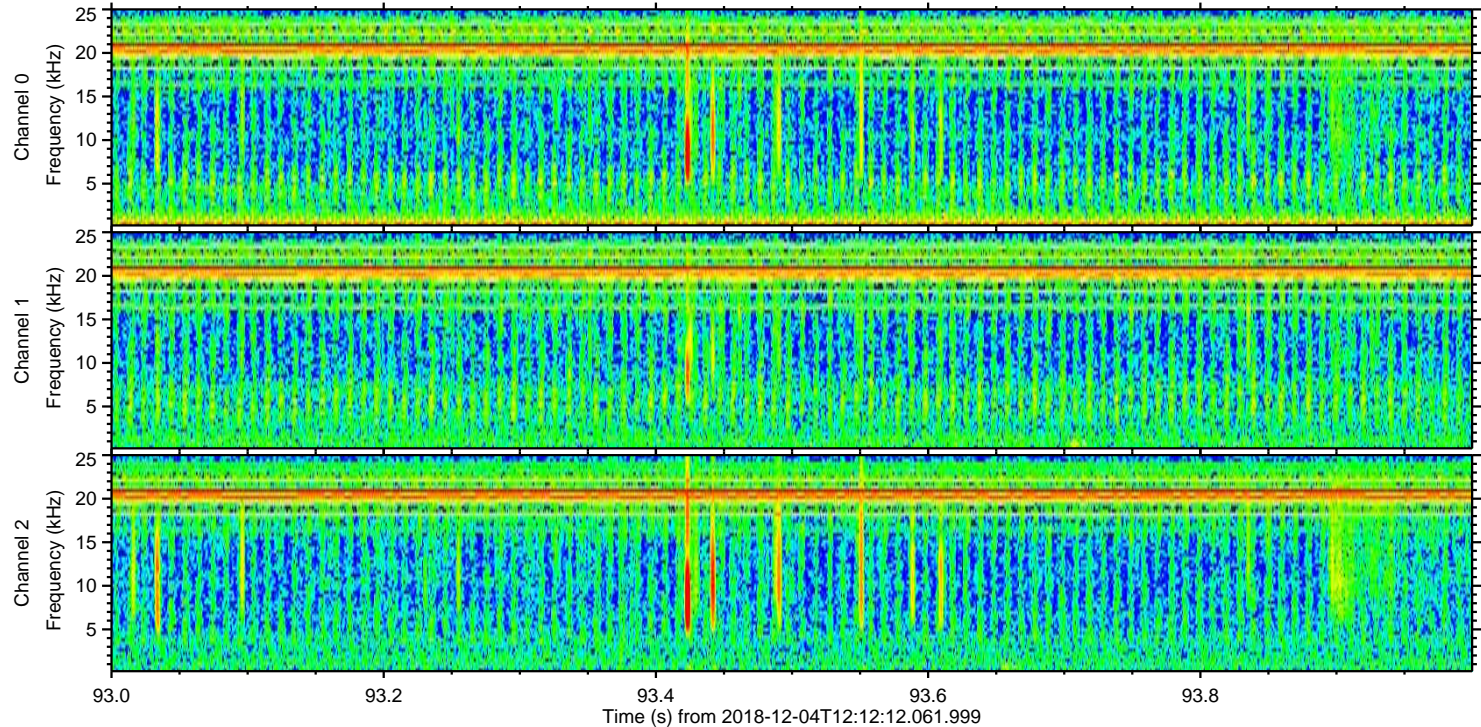
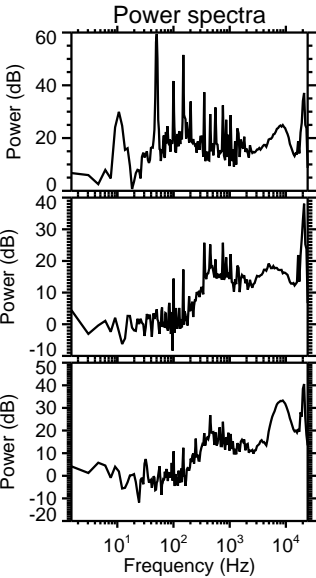
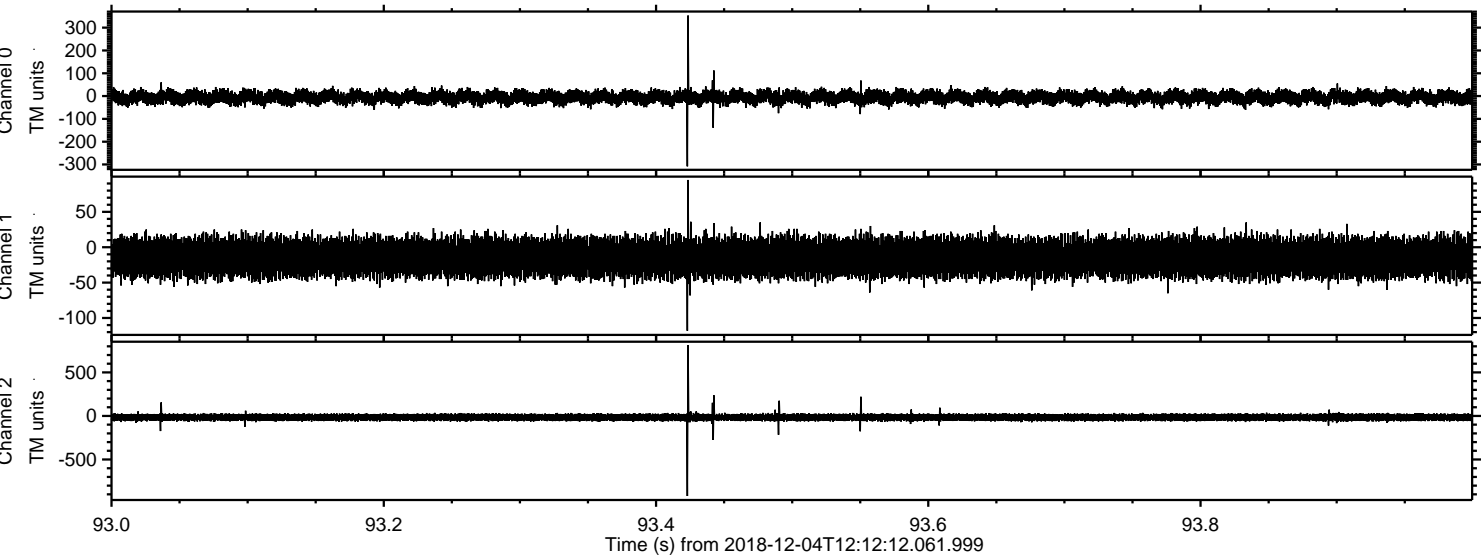
Processed Tue Dec 4 13:20:20 2018 by ELM ver.2012-10-06 from 001__elm20181204_121211__dat00.bin



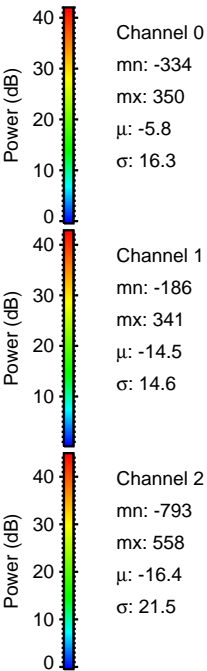
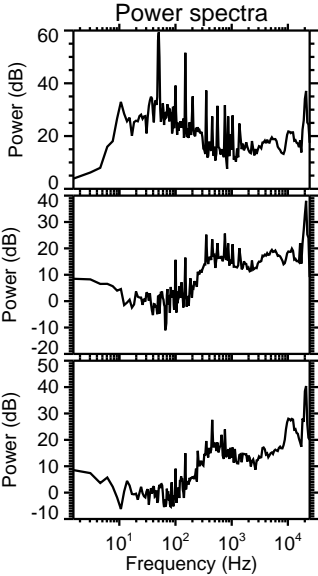
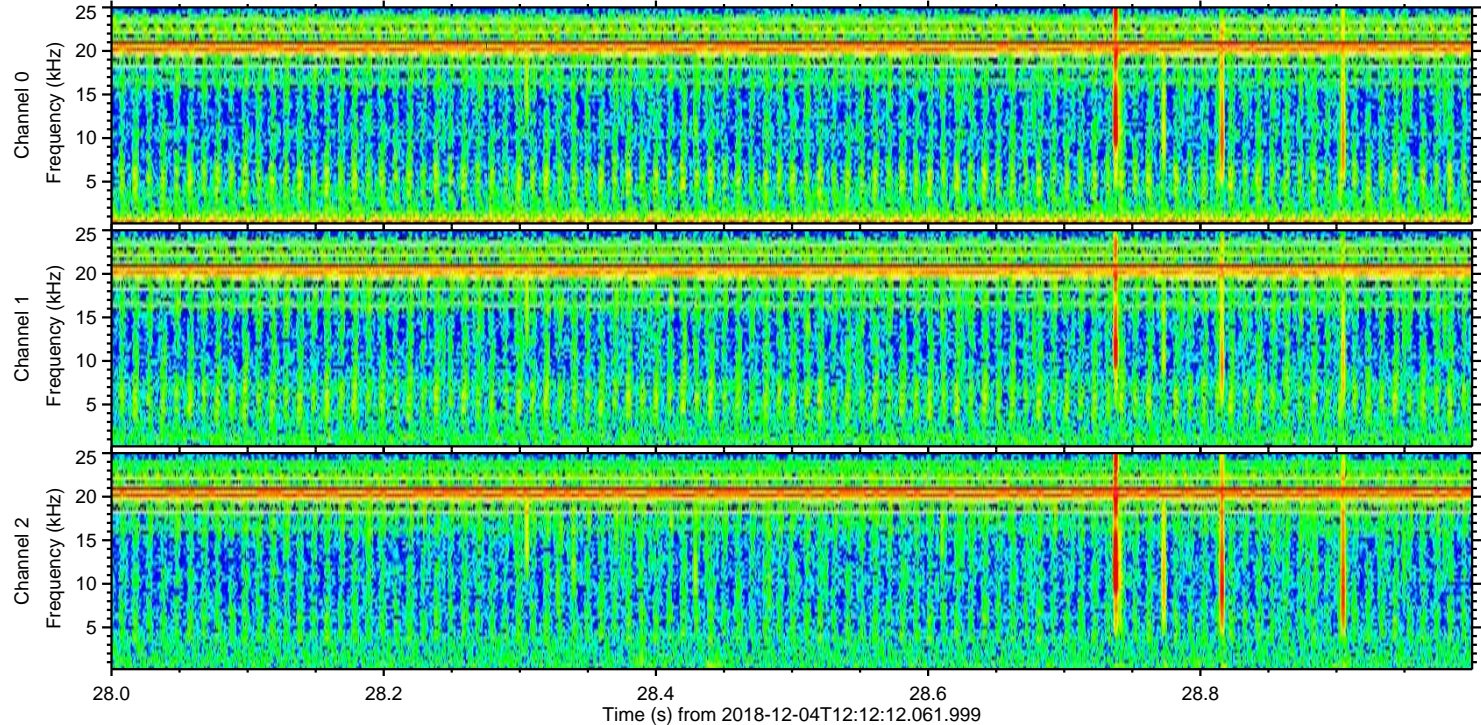
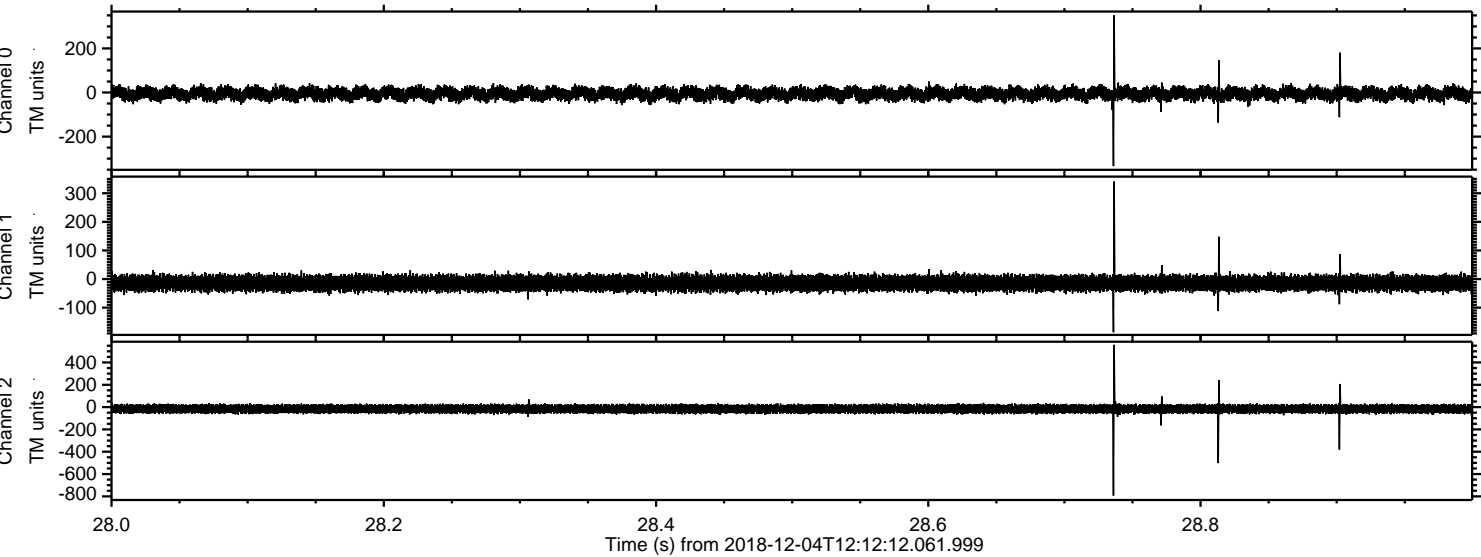
Processed Tue Dec 4 13:20:21 2018 by ELM ver.2012-10-06 from 001__elm20181204_121211__dat00.bin



Processed Tue Dec 4 13:20:22 2018 by ELM ver.2012-10-06 from 001__elm20181204_121211__dat00.bin



Processed Tue Dec 4 13:20:23 2018 by ELM ver.2012-10-06 from 001__elm20181204_121211__dat00.bin



Channel 0
mn: -334
mx: 350
 μ : -5.8
 σ : 16.3

Channel 1
mn: -186
mx: 341
 μ : -14.5
 σ : 14.6

Channel 2
mn: -793
mx: 558
 μ : -16.4
 σ : 21.5

