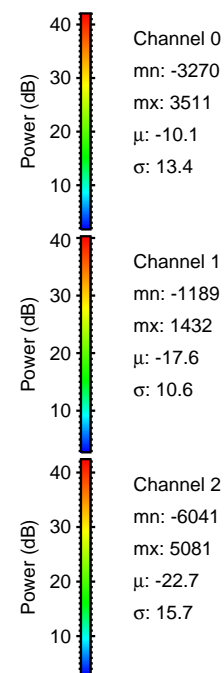
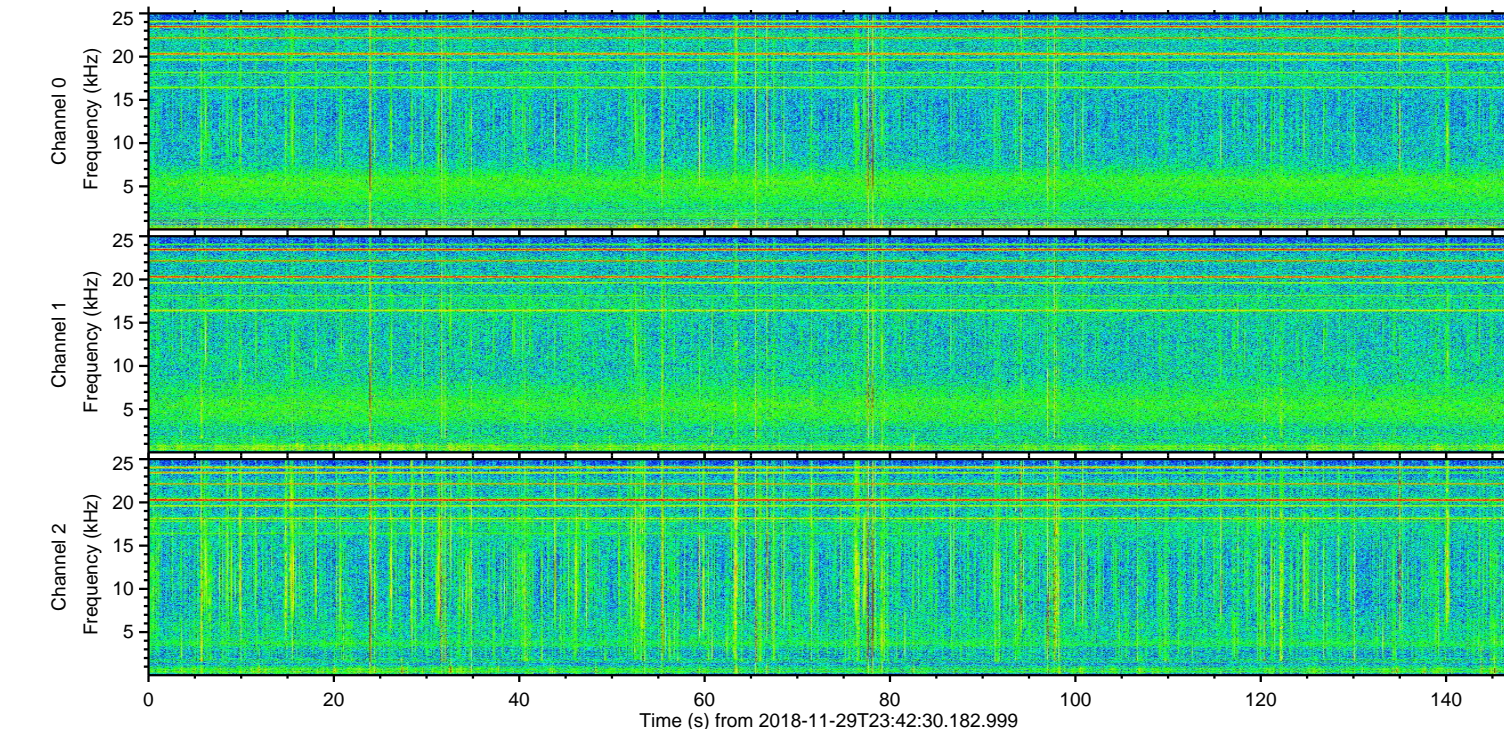
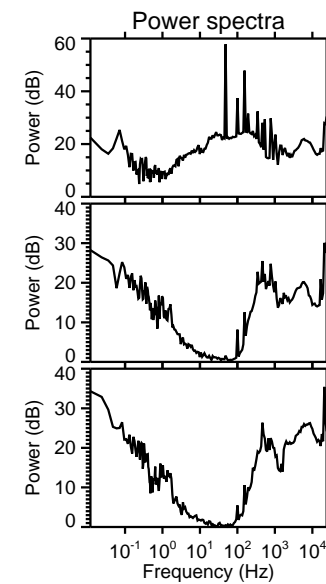
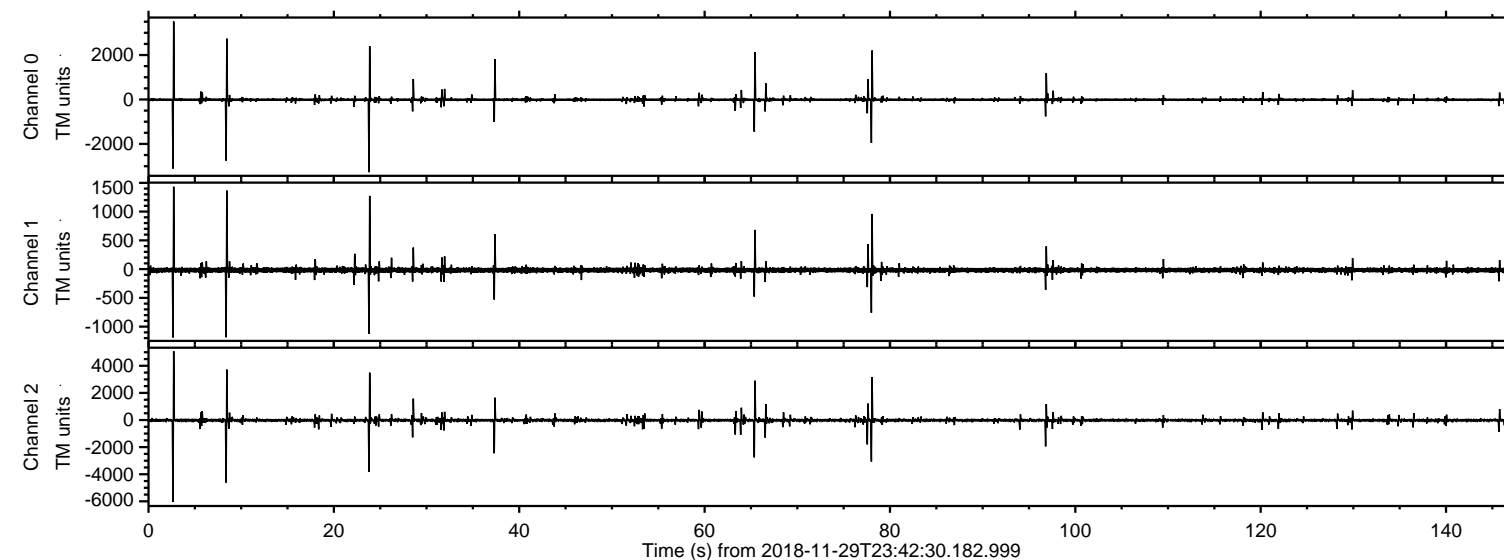


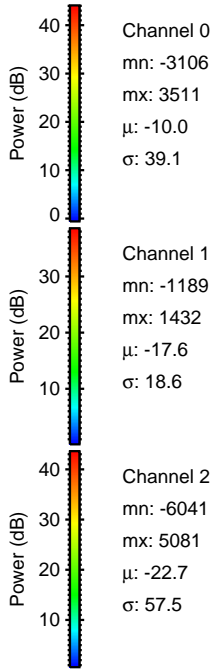
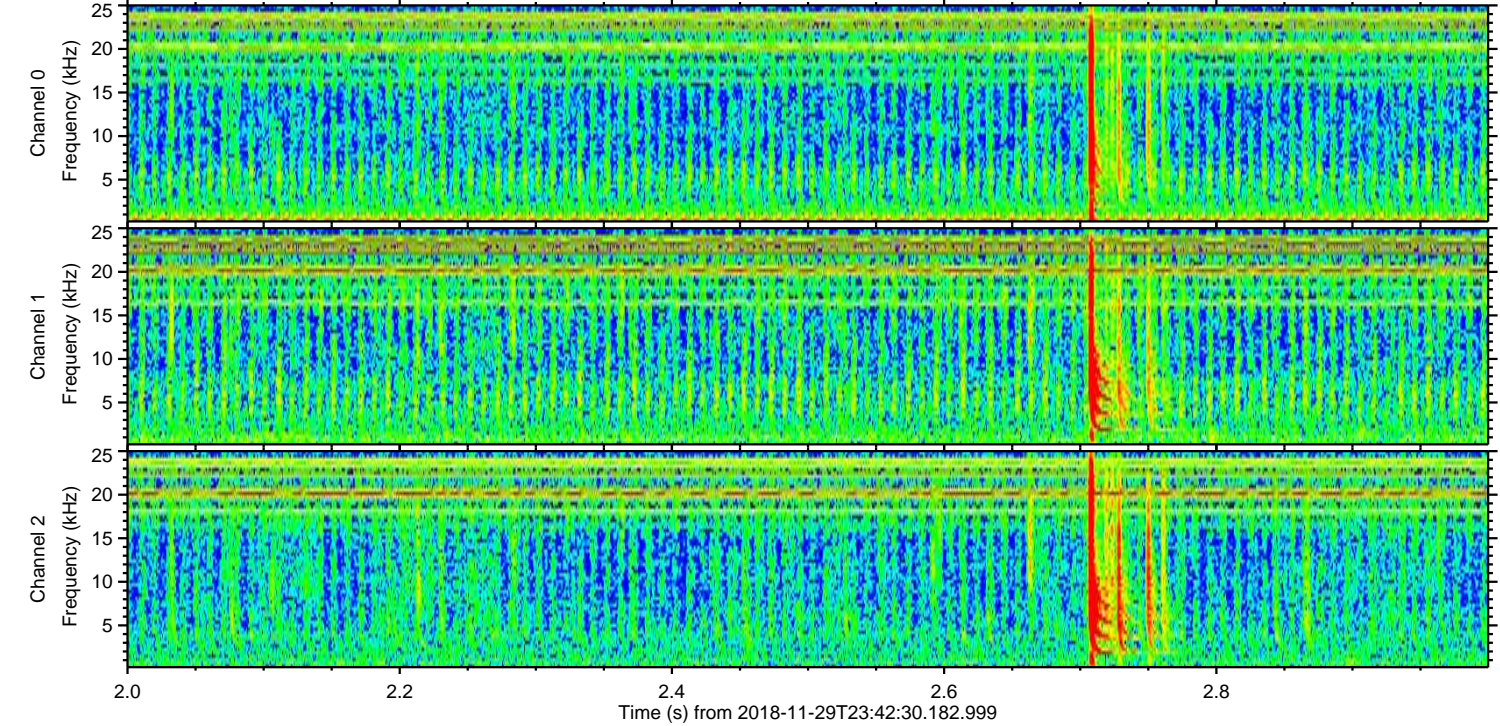
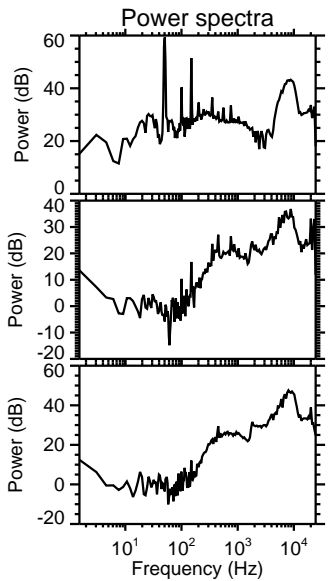
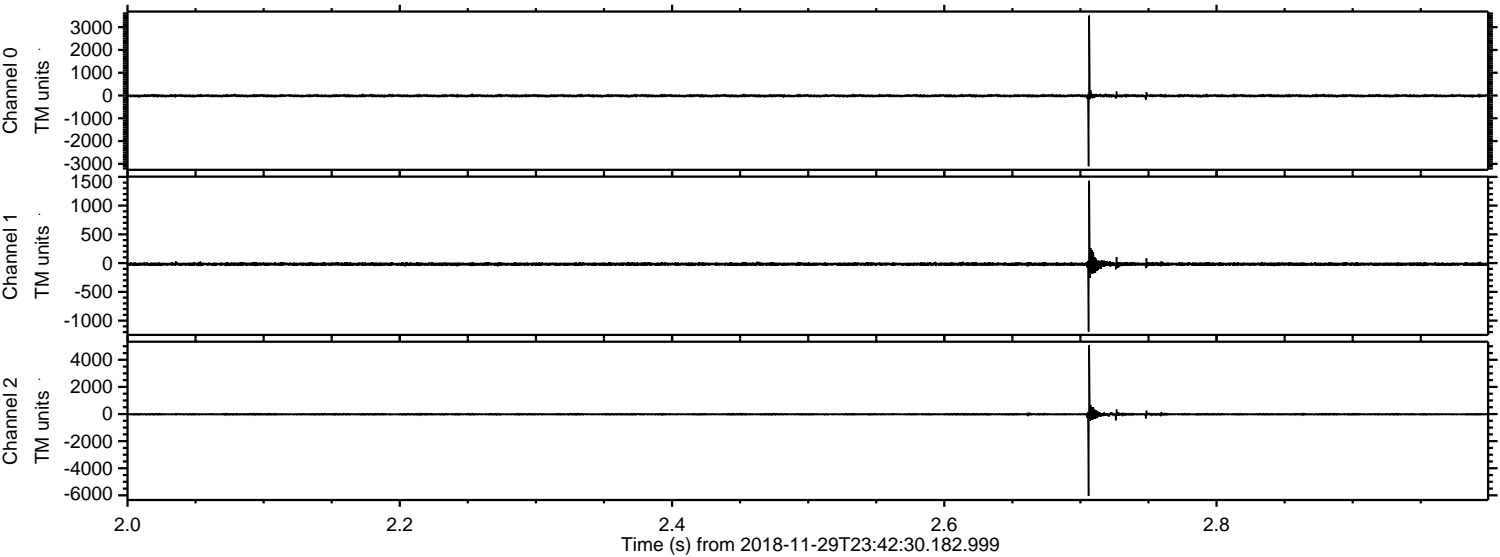
ELMAVAN 3D WAVEFORMS (Measured data sampled at 50 kHz) 51000 packets of 144 samples from 2018-11-29T23:42:30.182.999.

Processed Fri Nov 30 00:50:23 2018 by ELM ver.2012-10-06 from 001__elm20181129_234229__dat00.bin



ELMAVAN 3D WAVEFORMS (Measured data sampled at 50 kHz) 51000 packets of 144 samples from 2018-11-29T23:42:30.182.999. Part 3/147

Processed Fri Nov 30 00:50:29 2018 by ELM ver.2012-10-06 from 001__elm20181129_234229__dat00.bin

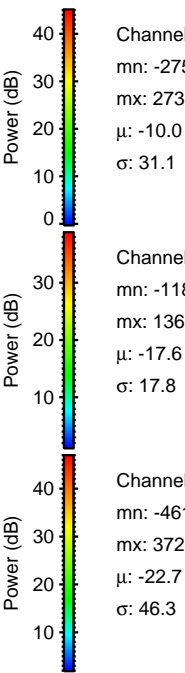
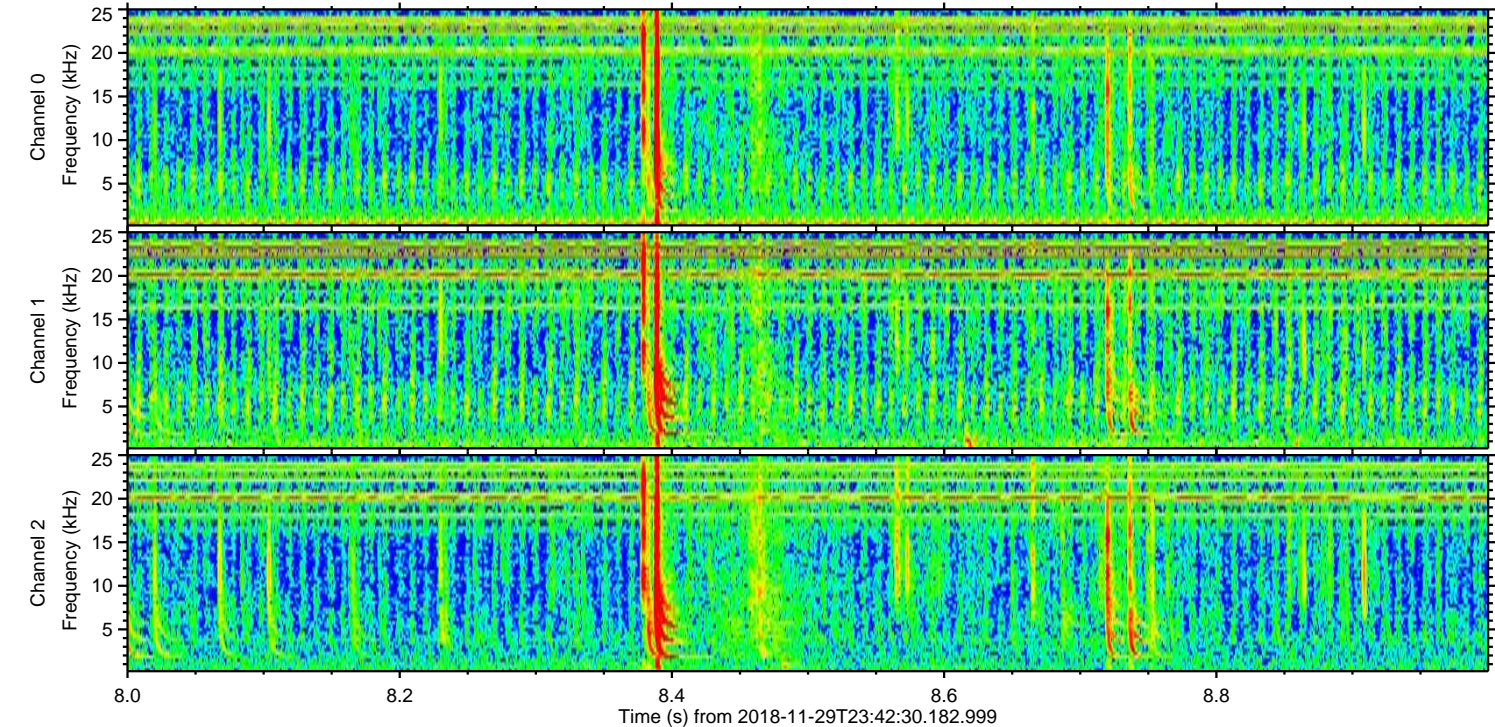
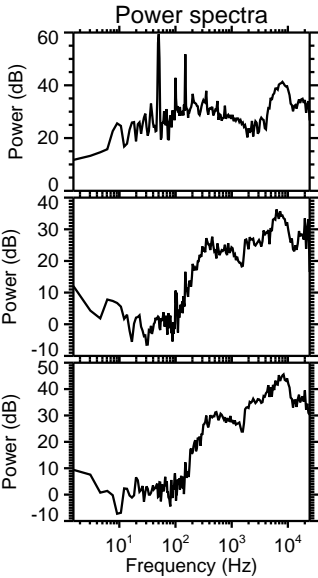
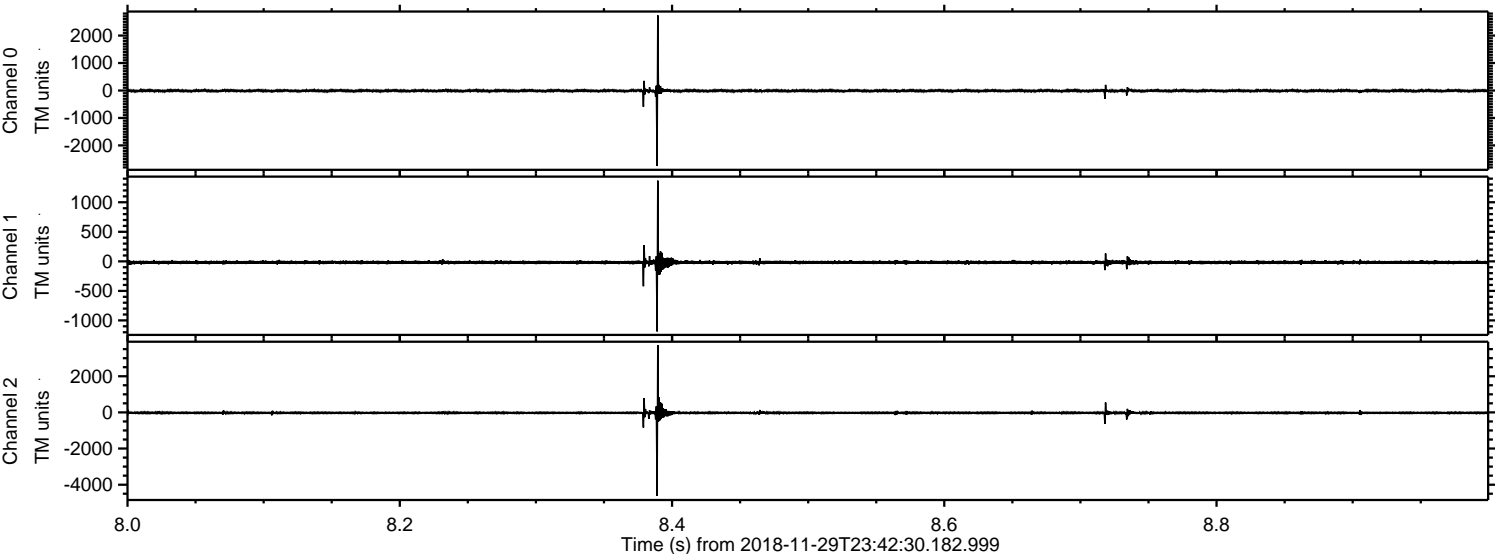


Channel 0
mn: -3106
mx: 3511
 μ : -10.0
 σ : 39.1

Channel 1
mn: -1189
mx: 1432
 μ : -17.6
 σ : 18.6

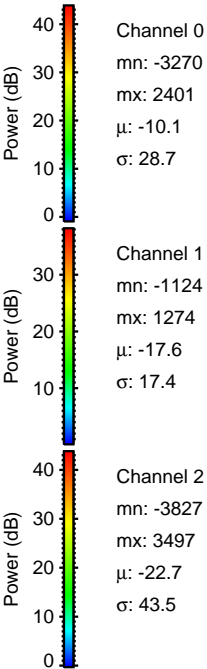
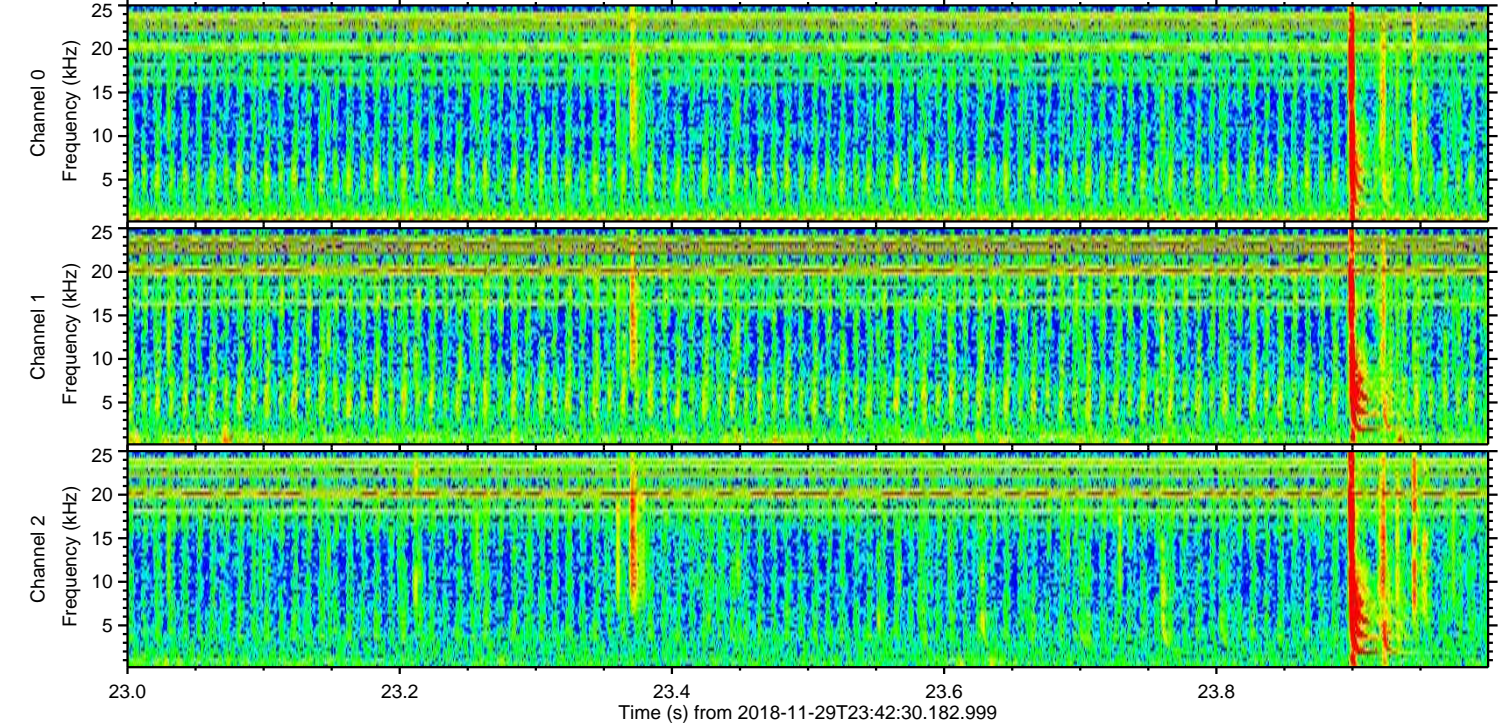
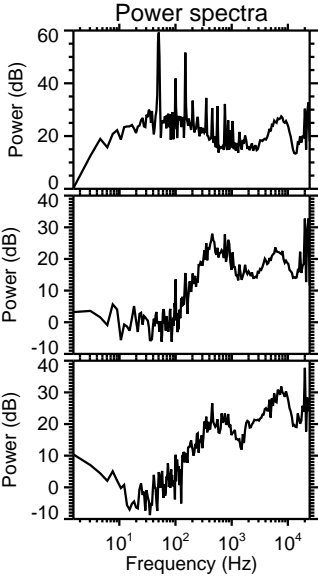
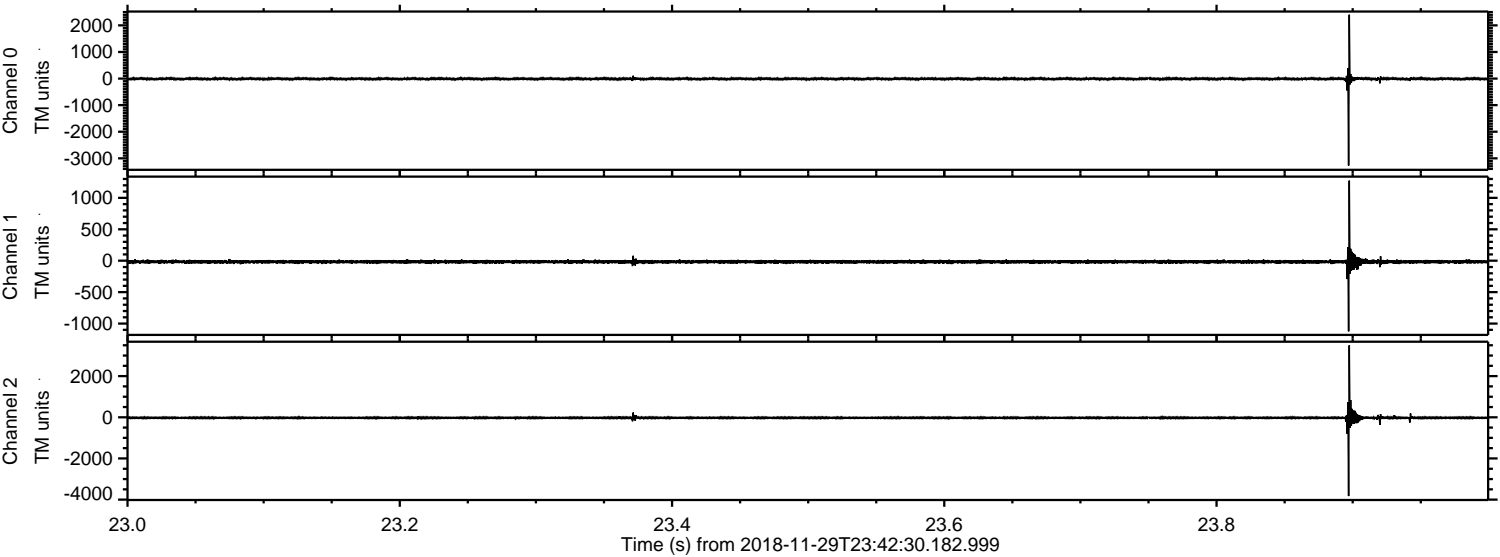
Channel 2
mn: -6041
mx: 5081
 μ : -22.7
 σ : 57.5

Processed Fri Nov 30 00:50:29 2018 by ELM ver.2012-10-06 from 001__elm20181129_234229__dat00.bin



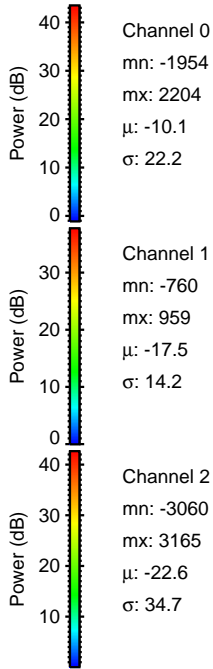
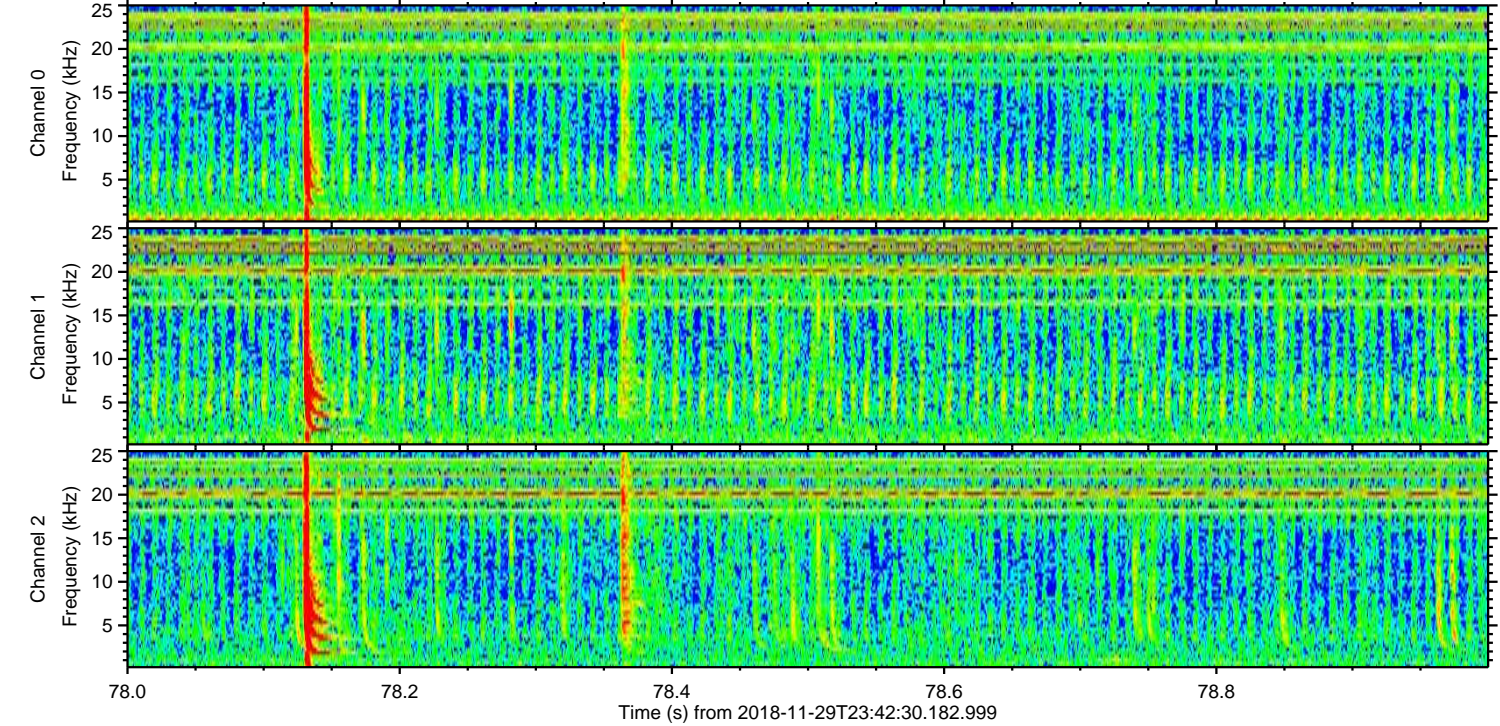
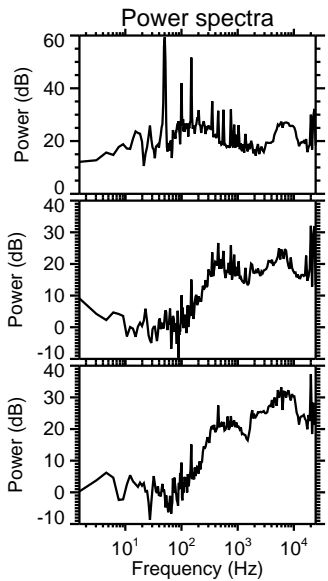
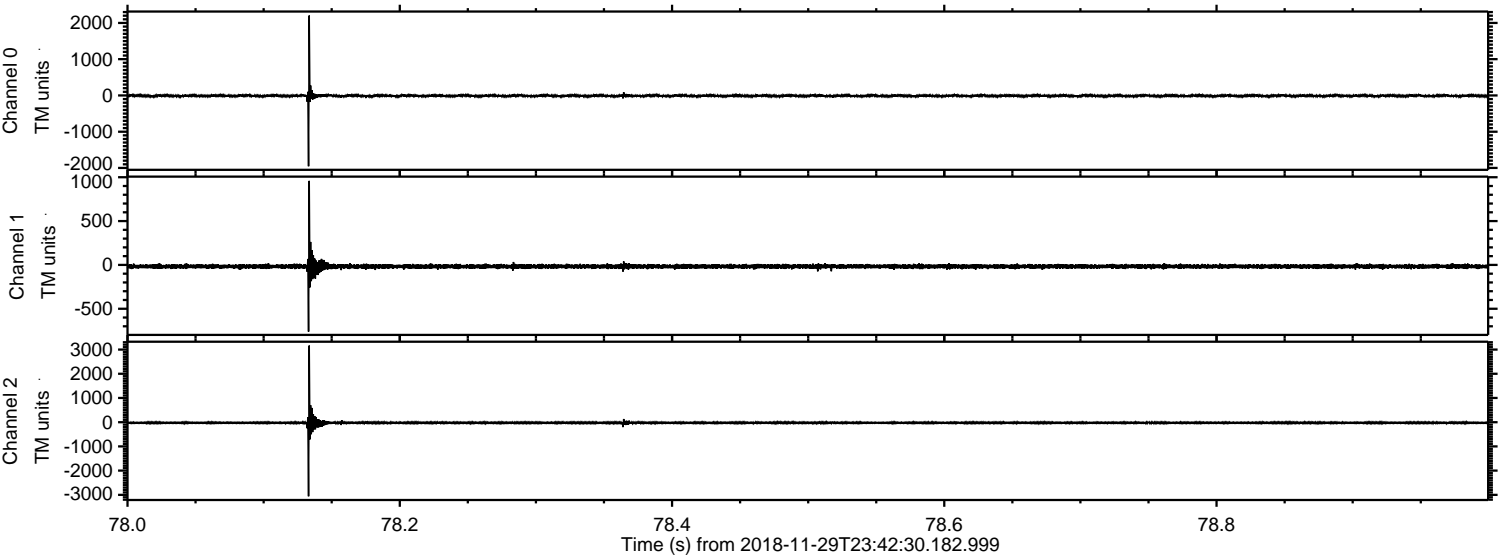
ELMAVAN 3D WAVEFORMS (Measured data sampled at 50 kHz) 51000 packets of 144 samples from 2018-11-29T23:42:30.182.999. Part 24/147

Processed Fri Nov 30 00:50:30 2018 by ELM ver.2012-10-06 from 001__elm20181129_234229__dat00.bin

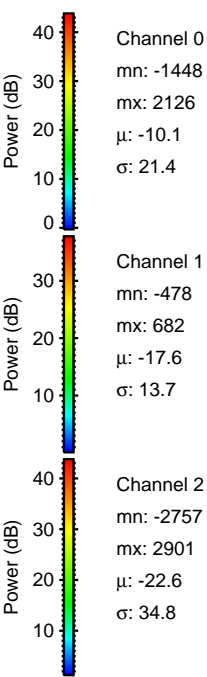
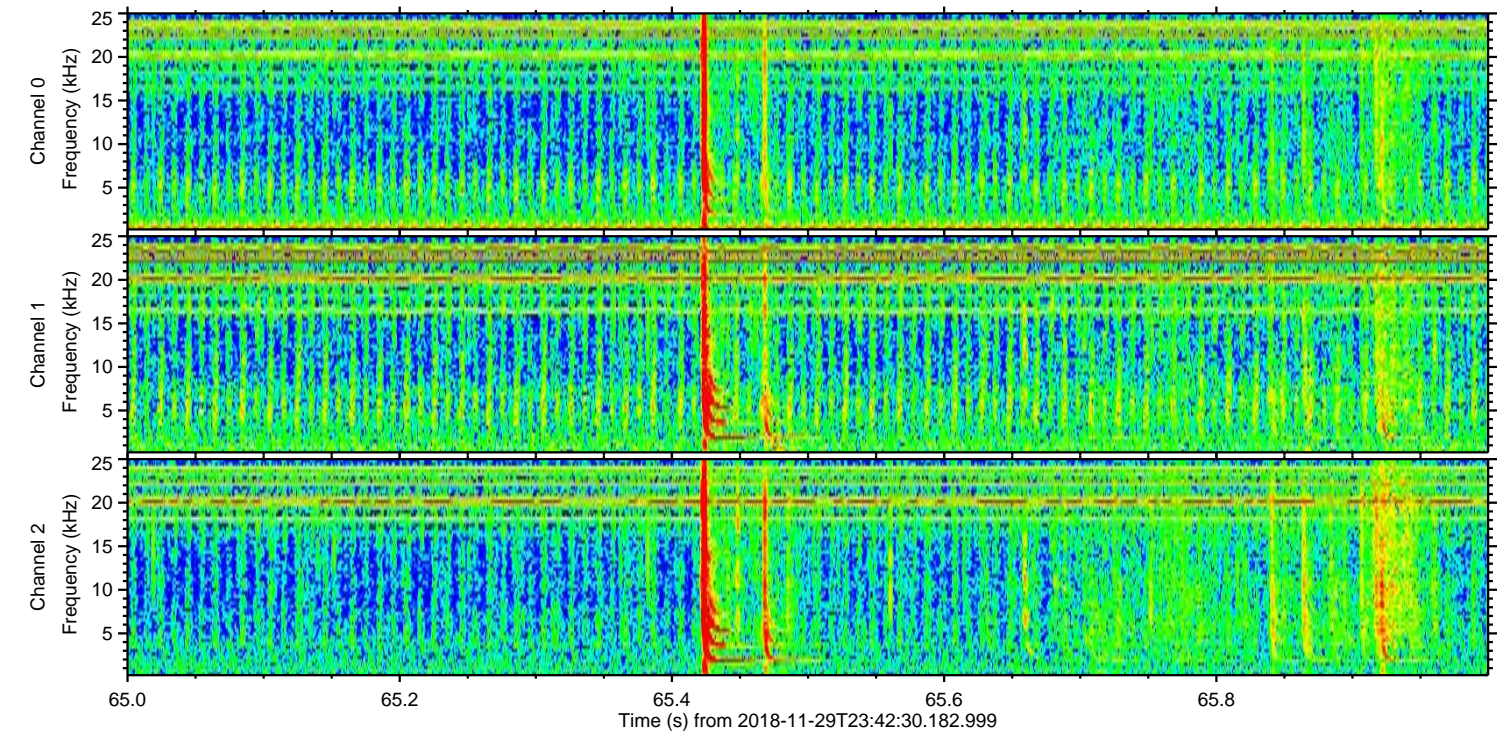
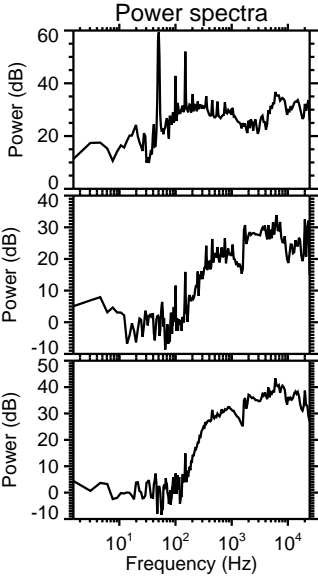
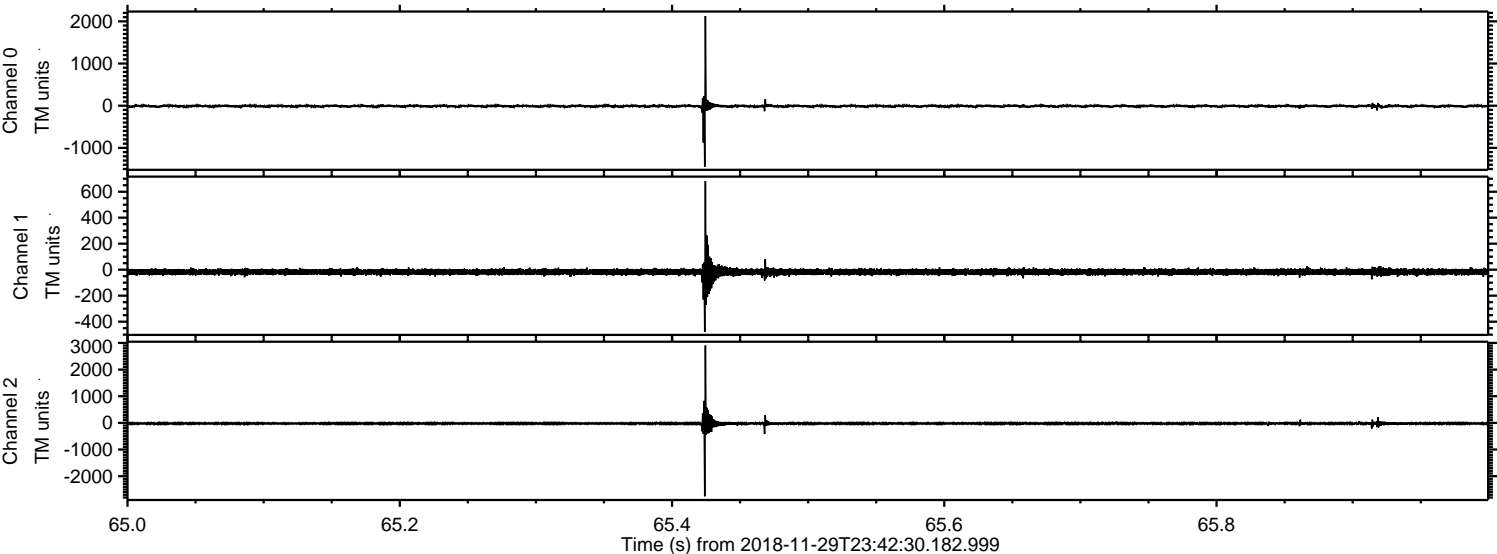


ELMAVAN 3D WAVEFORMS (Measured data sampled at 50 kHz) 51000 packets of 144 samples from 2018-11-29T23:42:30.182.999. Part 79/147

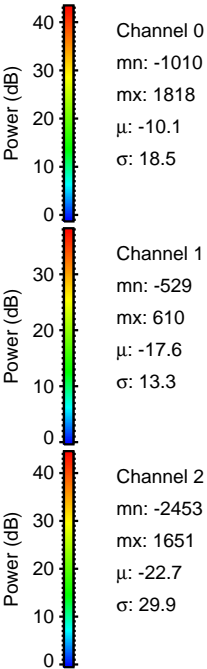
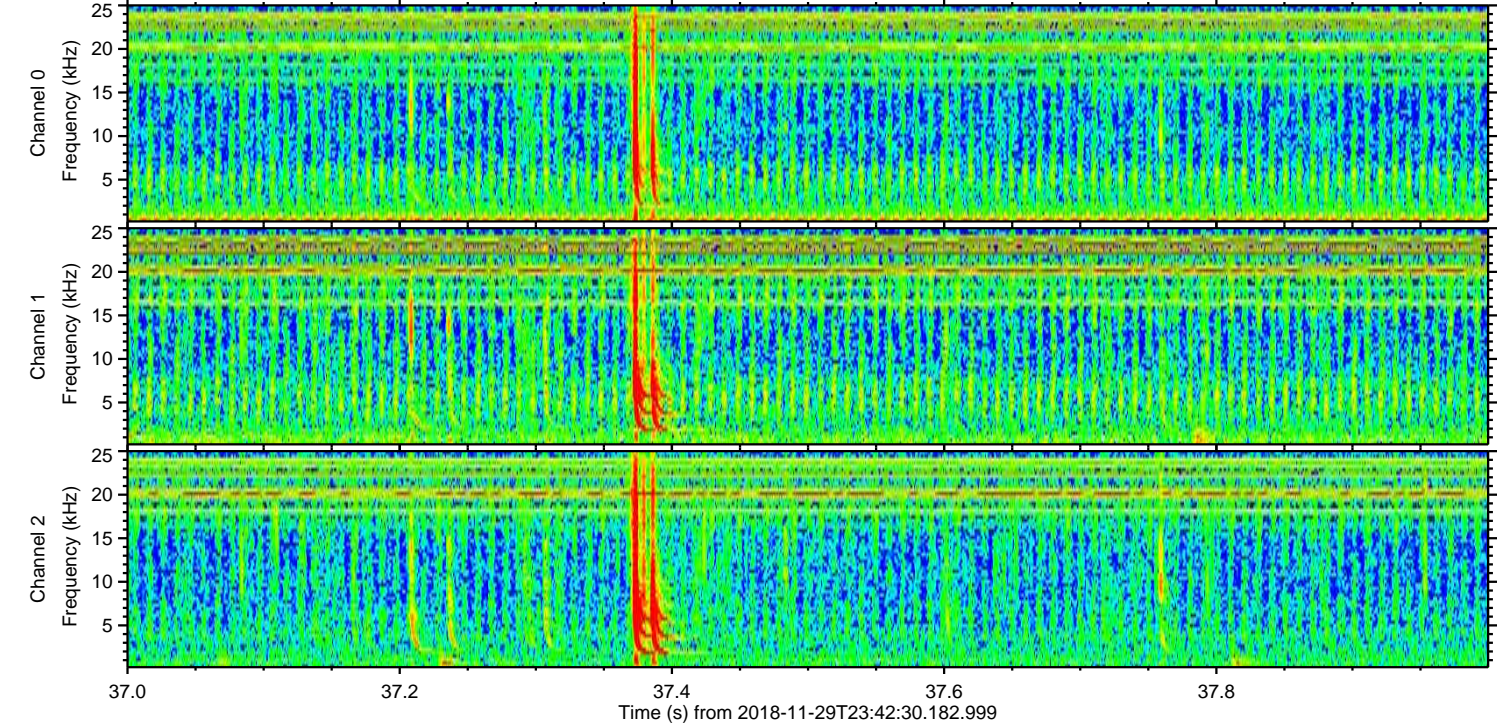
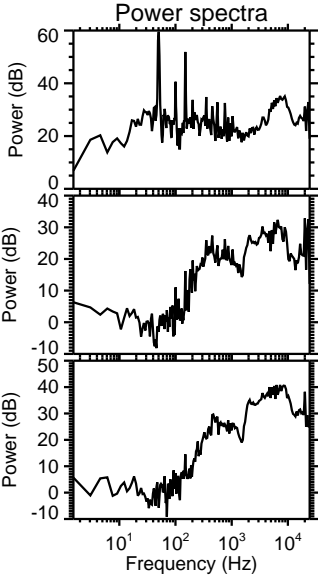
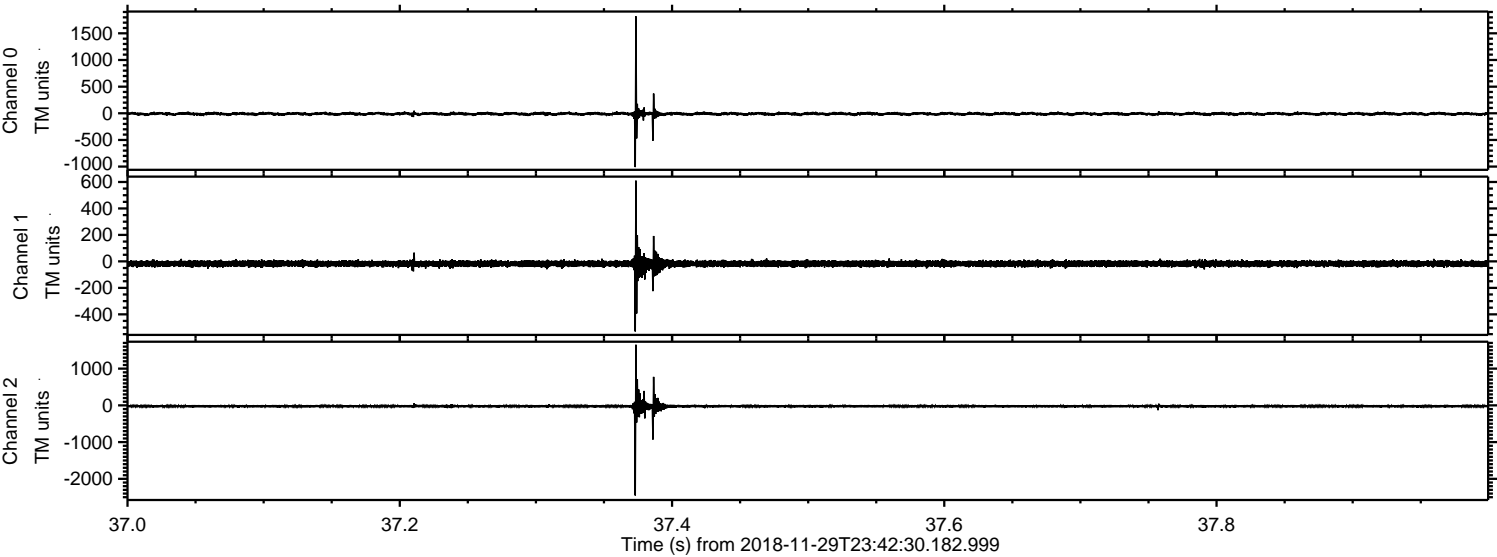
Processed Fri Nov 30 00:50:31 2018 by ELM ver.2012-10-06 from 001__elm20181129_234229__dat00.bin



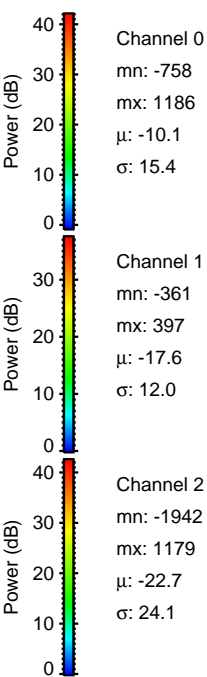
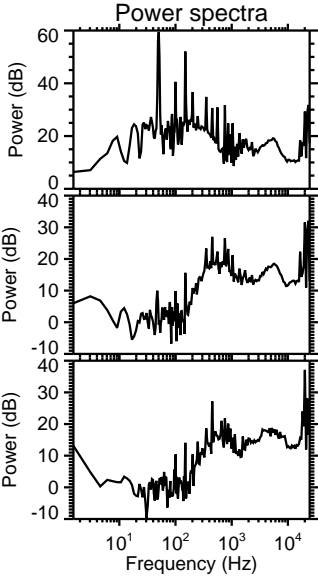
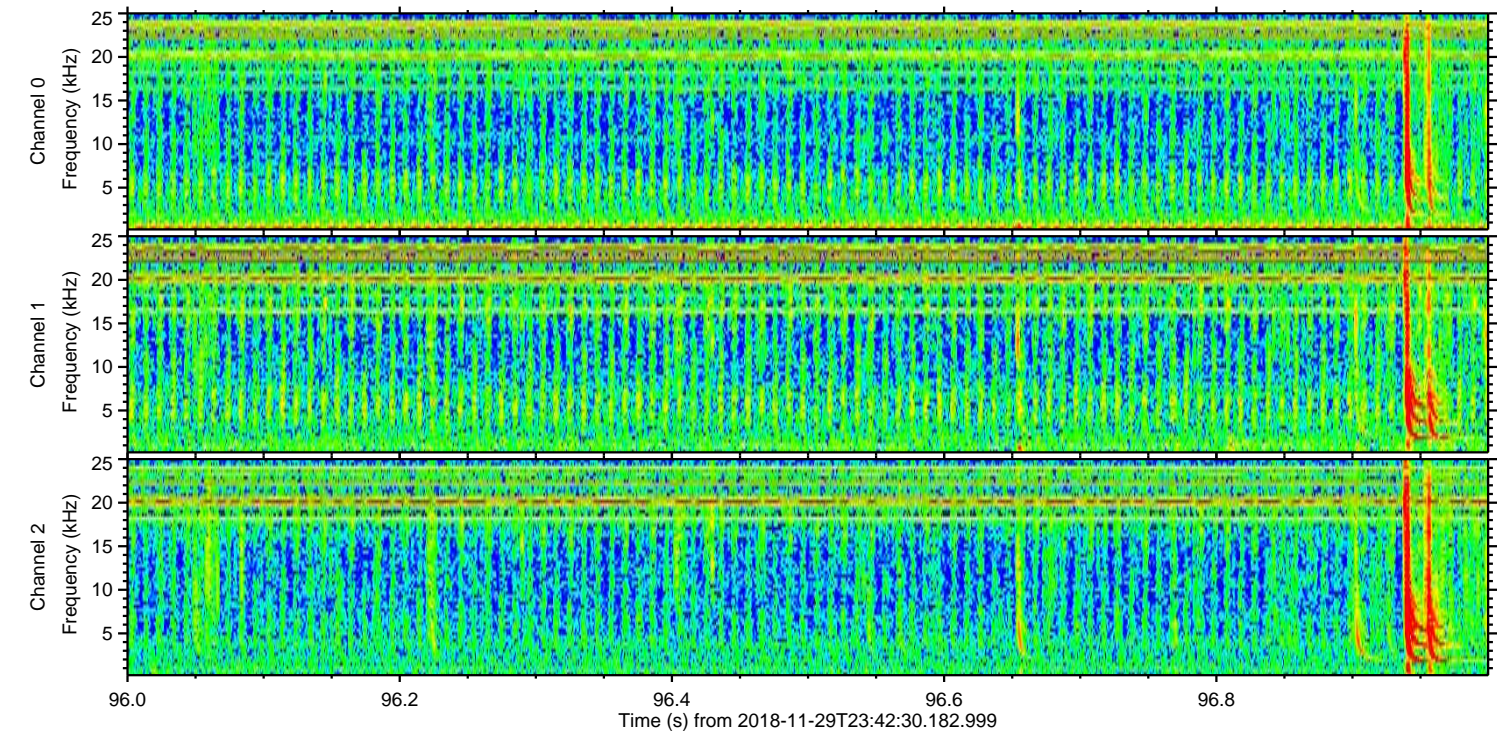
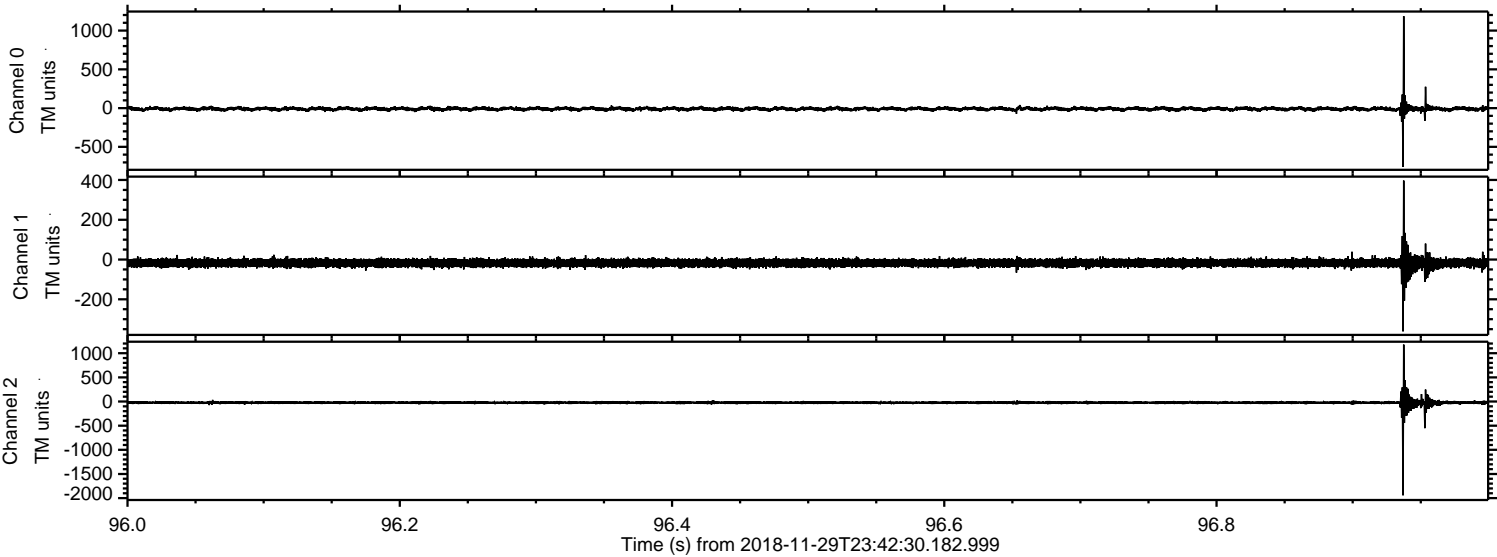
Processed Fri Nov 30 00:50:31 2018 by ELM ver.2012-10-06 from 001__elm20181129_234229__dat00.bin



Processed Fri Nov 30 00:50:32 2018 by ELM ver.2012-10-06 from 001__elm20181129_234229__dat00.bin



Processed Fri Nov 30 00:50:33 2018 by ELM ver.2012-10-06 from 001__elm20181129_234229__dat00.bin

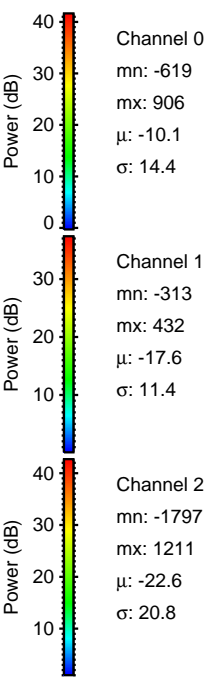
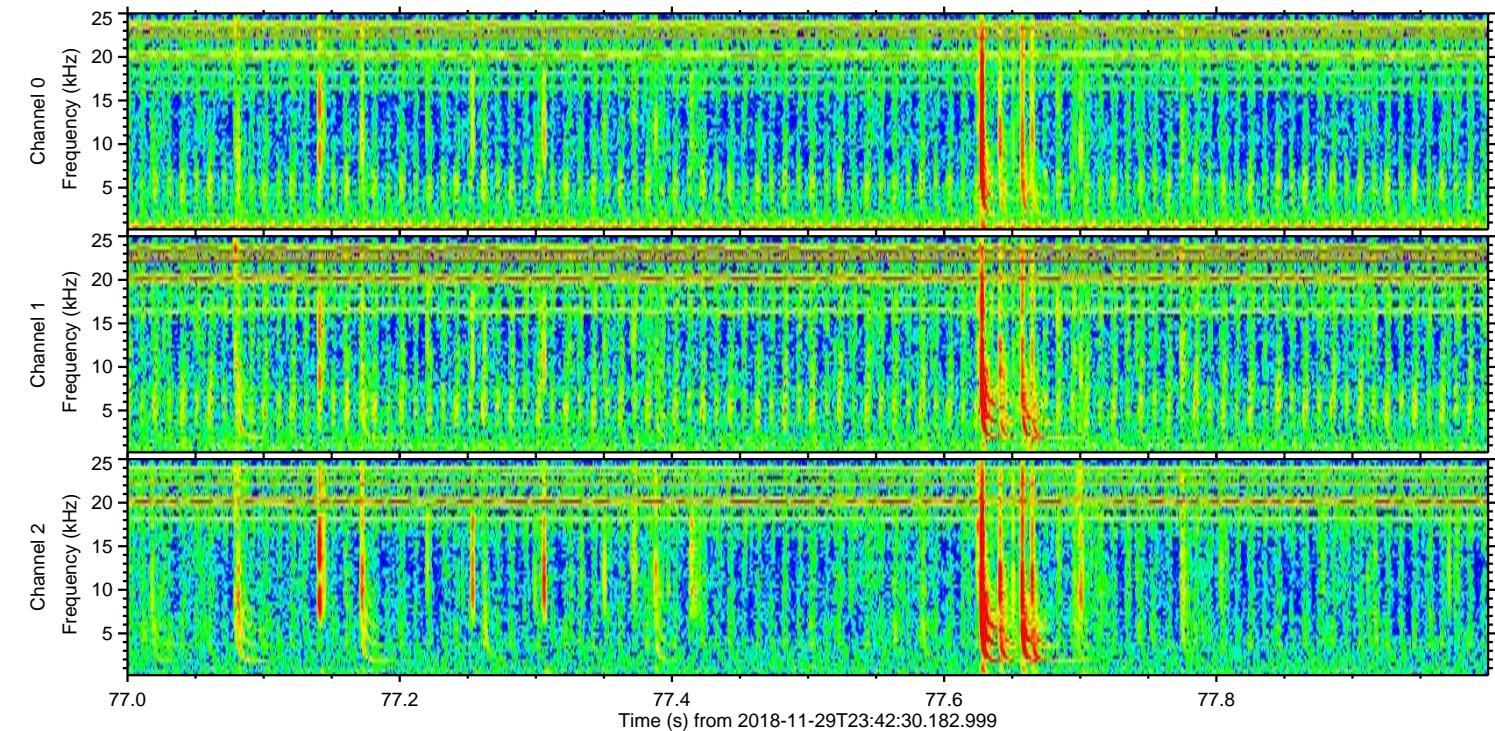
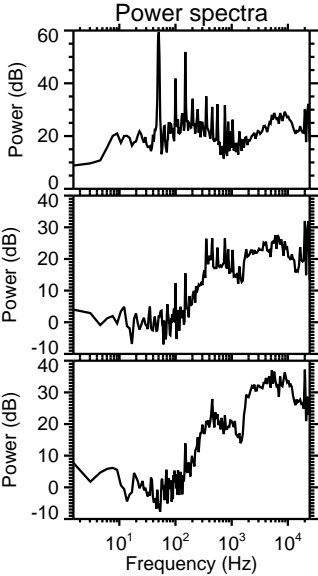
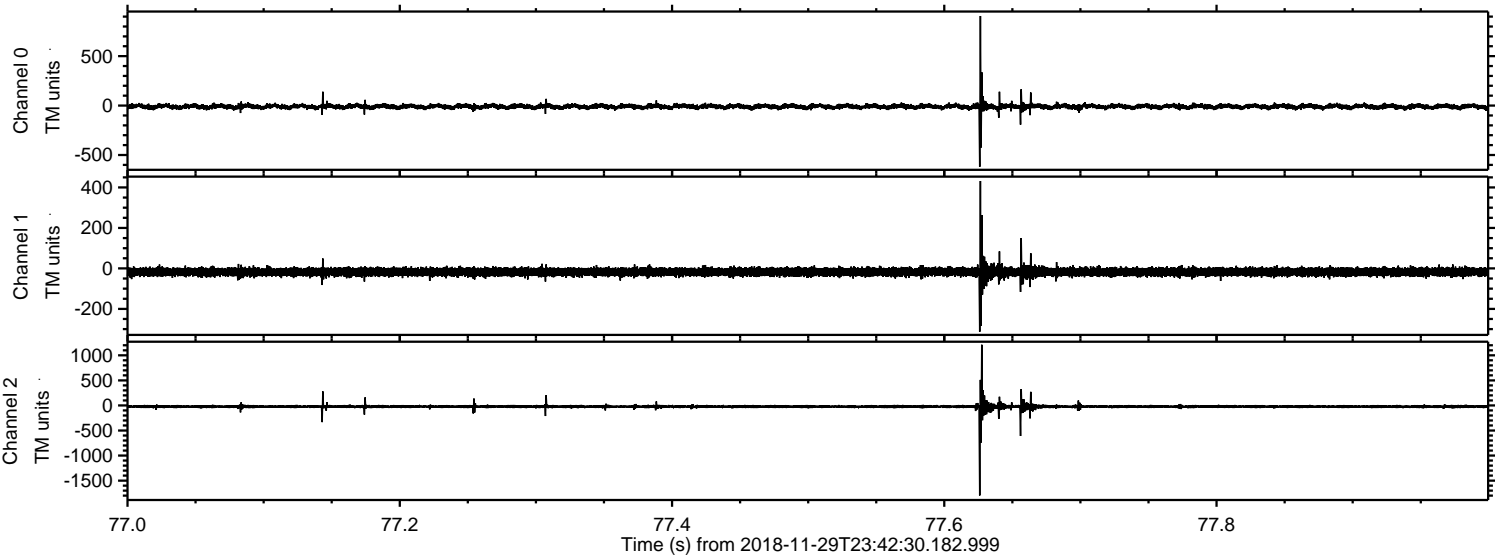


Channel 0
mn: -758
mx: 1186
 μ : -10.1
 σ : 15.4

Channel 1
mn: -361
mx: 397
 μ : -17.6
 σ : 12.0

Channel 2
mn: -1942
mx: 1179
 μ : -22.7
 σ : 24.1

Processed Fri Nov 30 00:50:34 2018 by ELM ver.2012-10-06 from 001__elm20181129_234229__dat00.bin



Processed Fri Nov 30 00:50:34 2018 by ELM ver.2012-10-06 from 001__elm20181129_234229__dat00.bin

