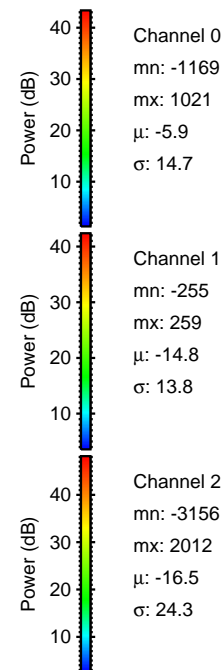
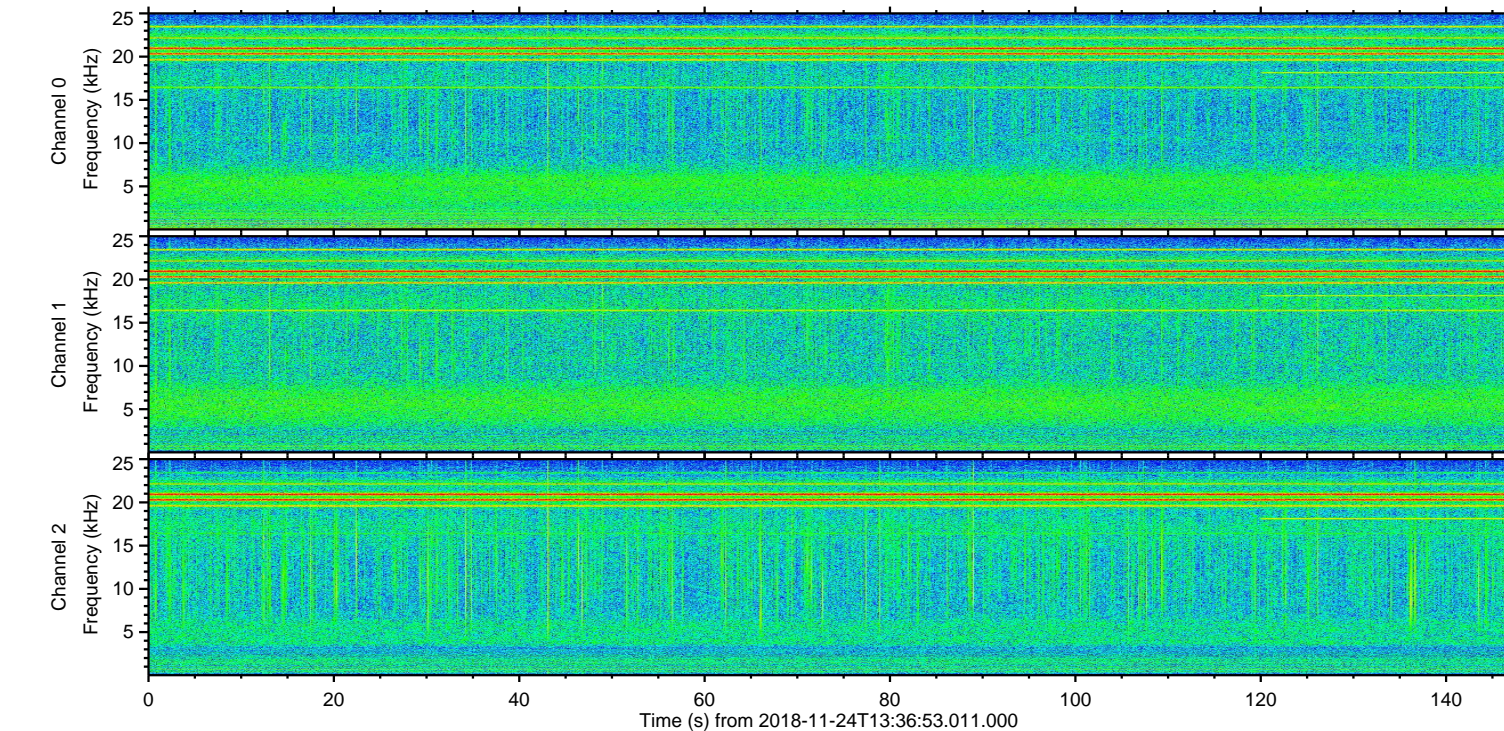
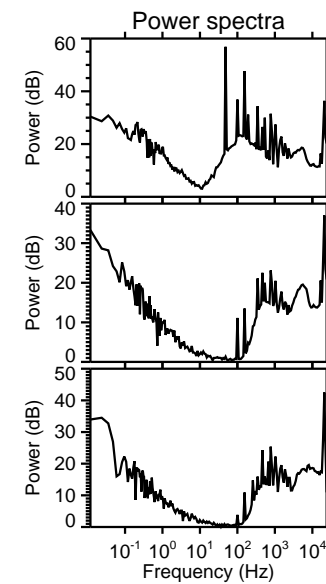
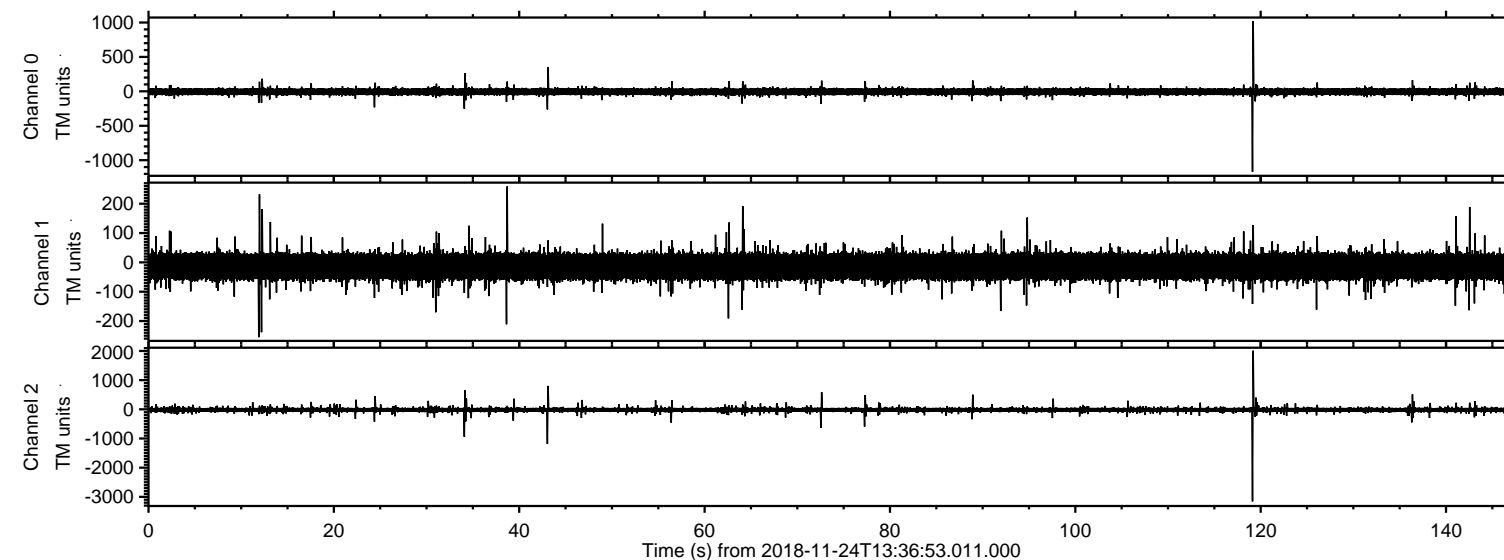


# ELMAVAN 3D WAVEFORMS (Measured data sampled at 50 kHz) 51000 packets of 144 samples from 2018-11-24T13:36:53.011.000.

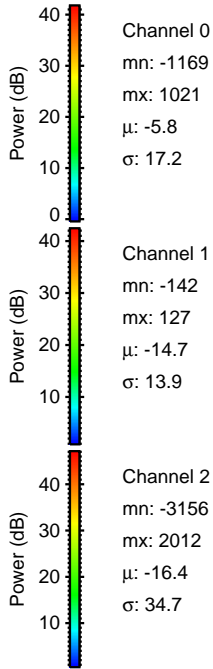
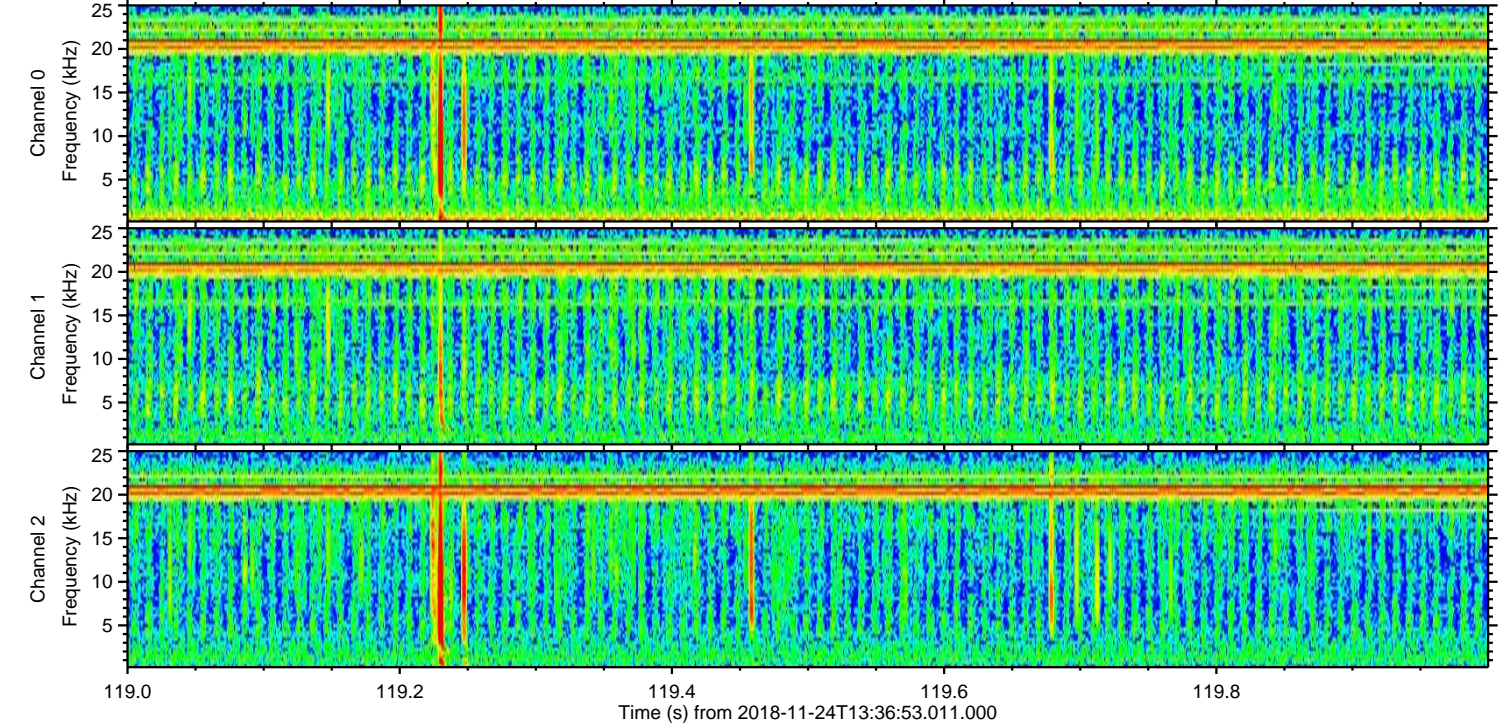
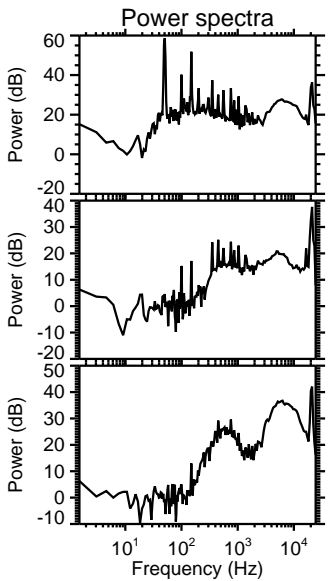
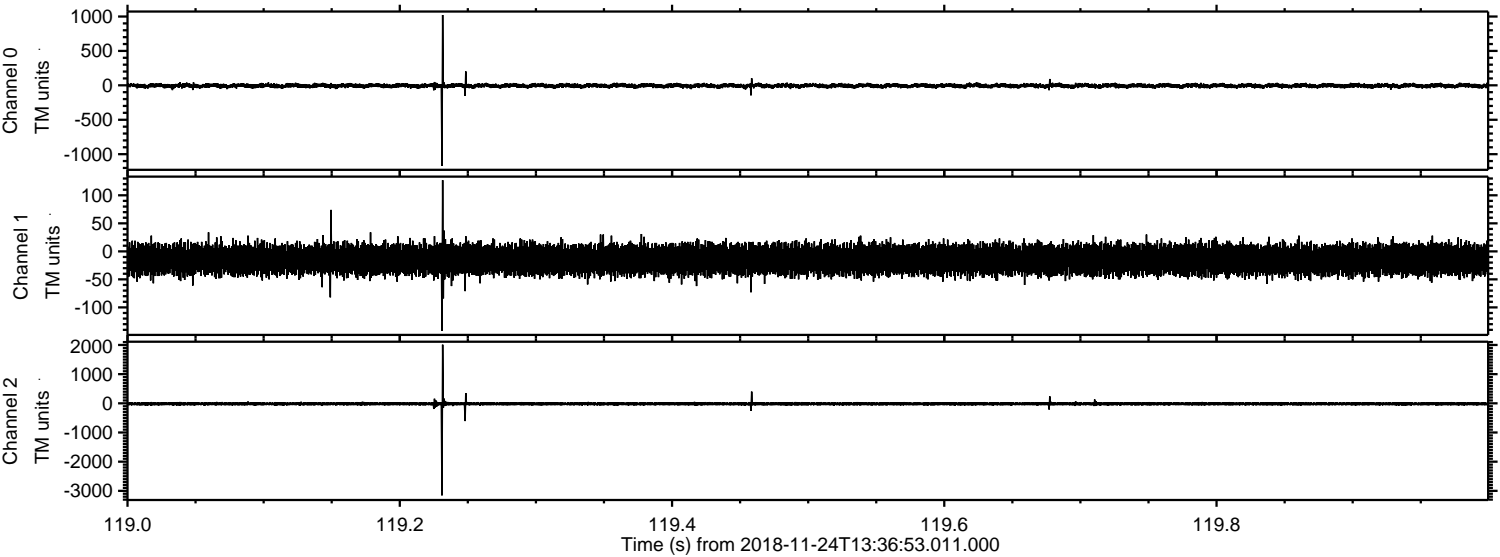
Processed Sat Nov 24 14:45:19 2018 by ELM ver.2012-10-06 from 001\_\_elm20181124\_133652\_\_dat00.bin





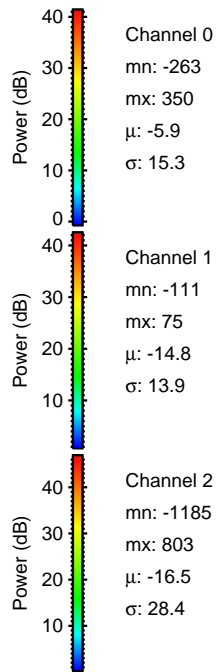
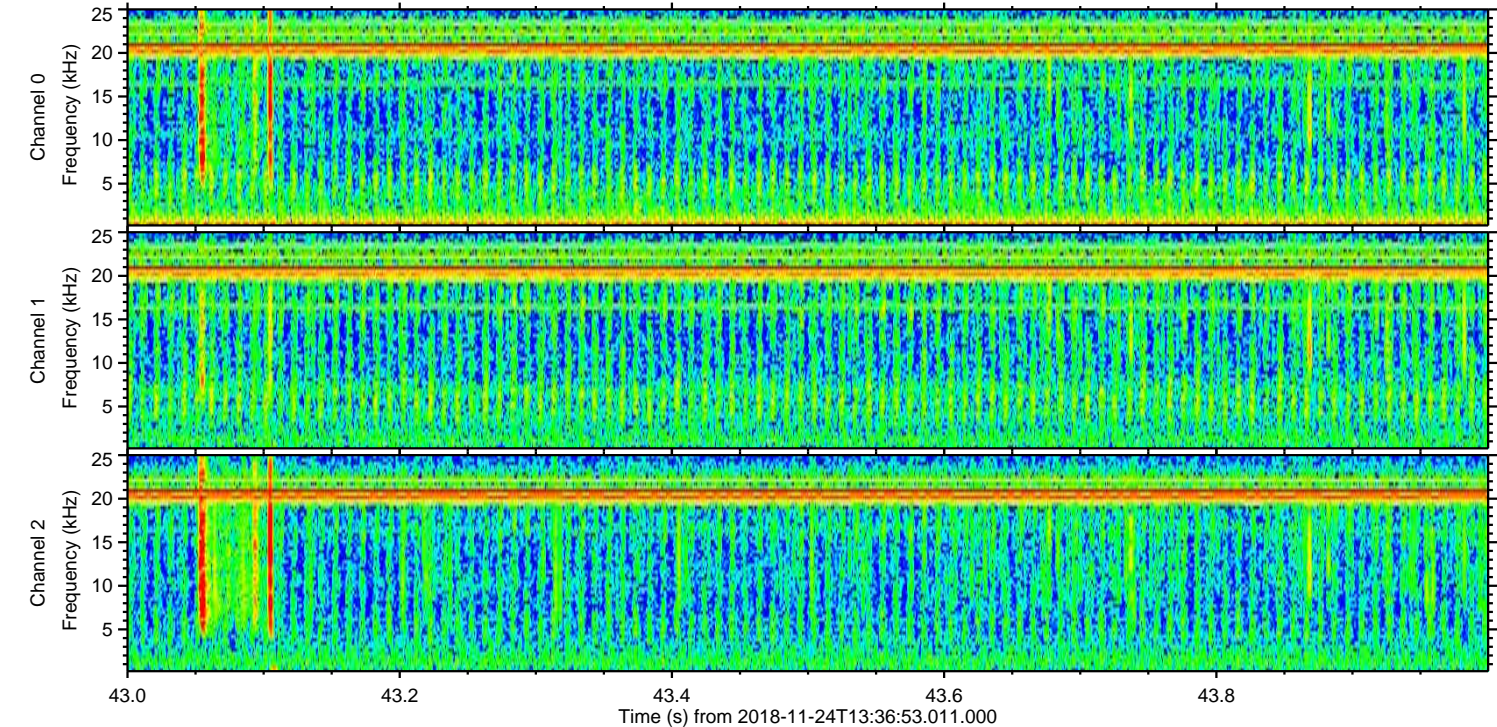
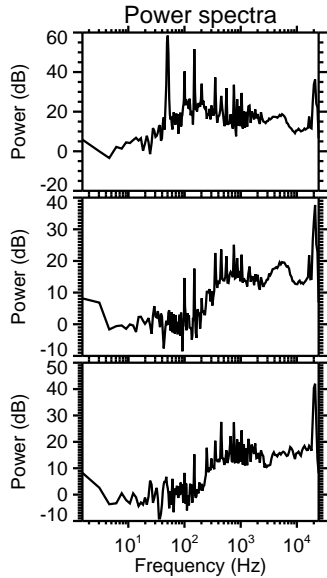
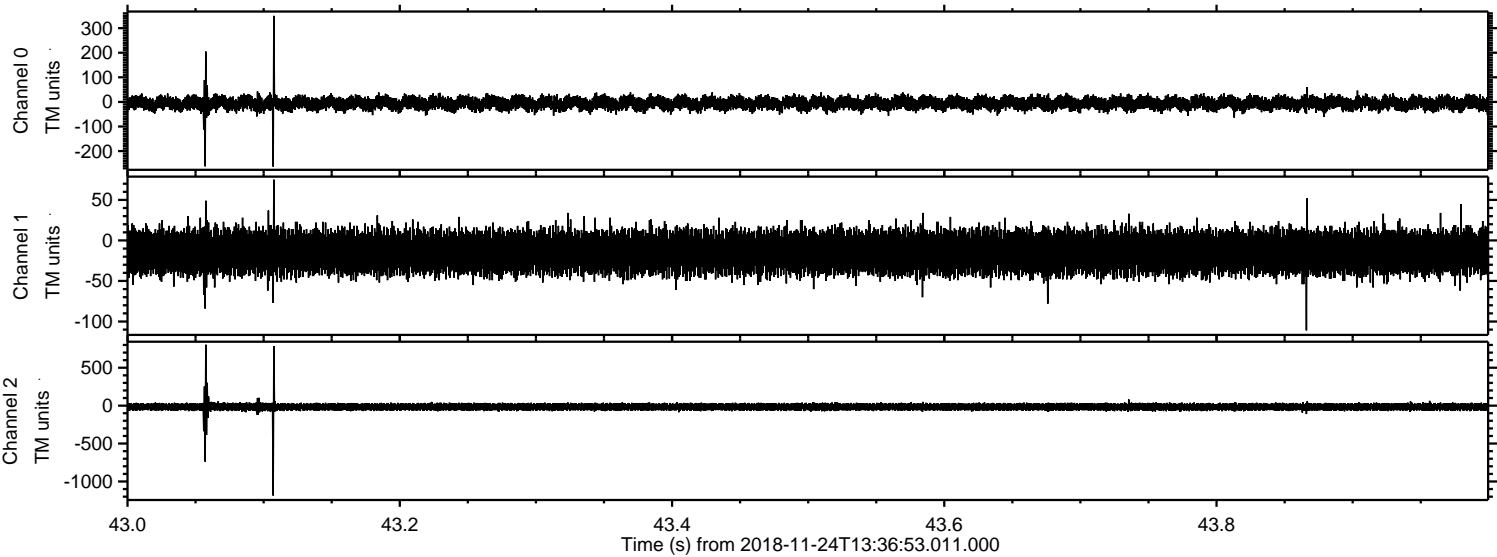
ELMAVAN 3D WAVEFORMS (Measured data sampled at 50 kHz) 51000 packets of 144 samples from 2018-11-24T13:36:53.011.000. Part 120/147

Processed Sat Nov 24 14:45:25 2018 by ELM ver.2012-10-06 from 001\_\_elm20181124\_133652\_\_dat00.bin



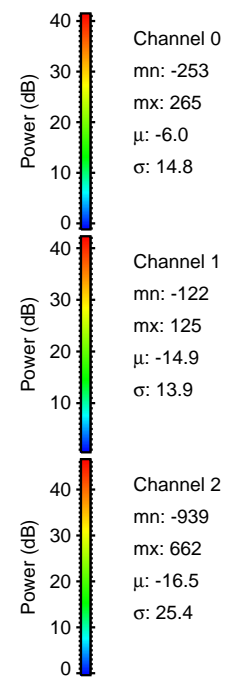
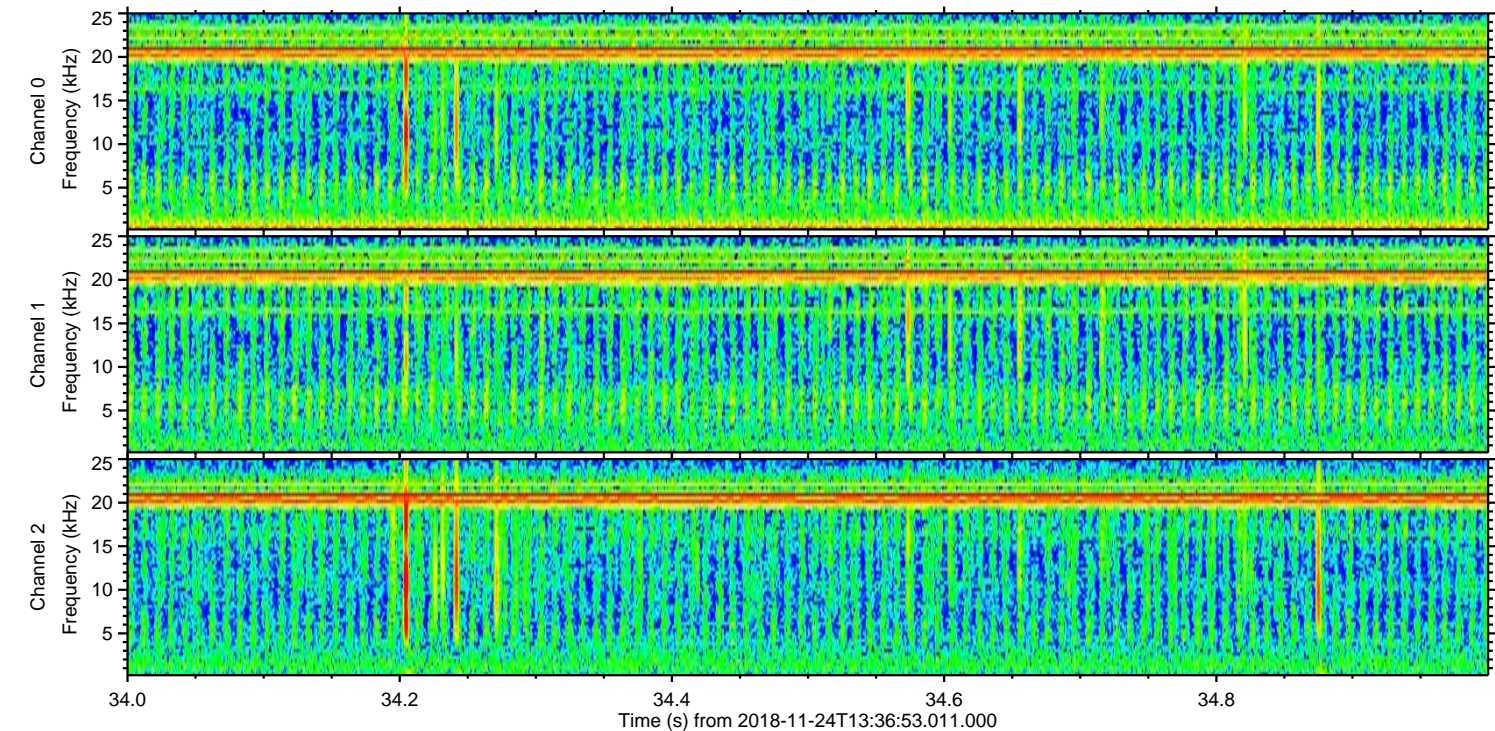
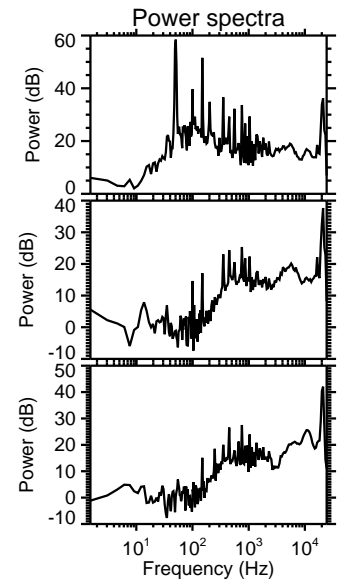
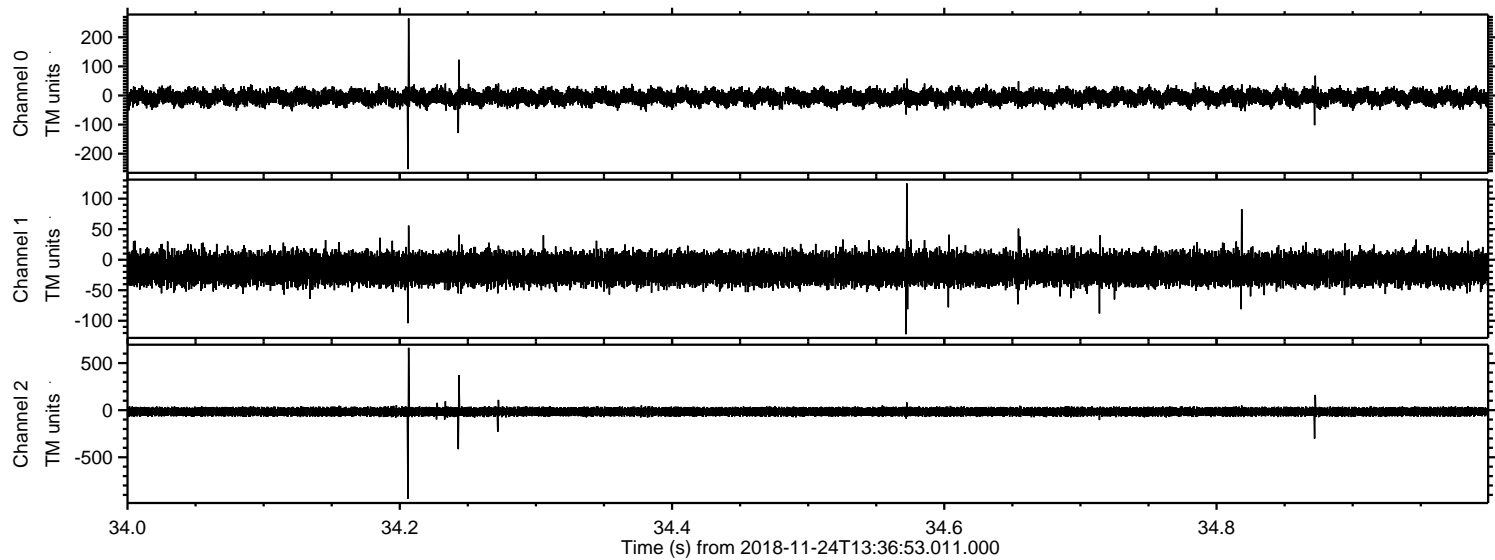


Processed Sat Nov 24 14:45:26 2018 by ELM ver.2012-10-06 from 001\_\_elm20181124\_133652\_\_dat00.bin



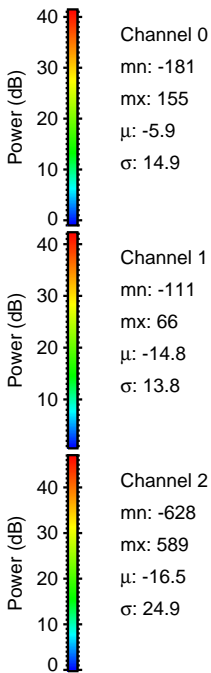
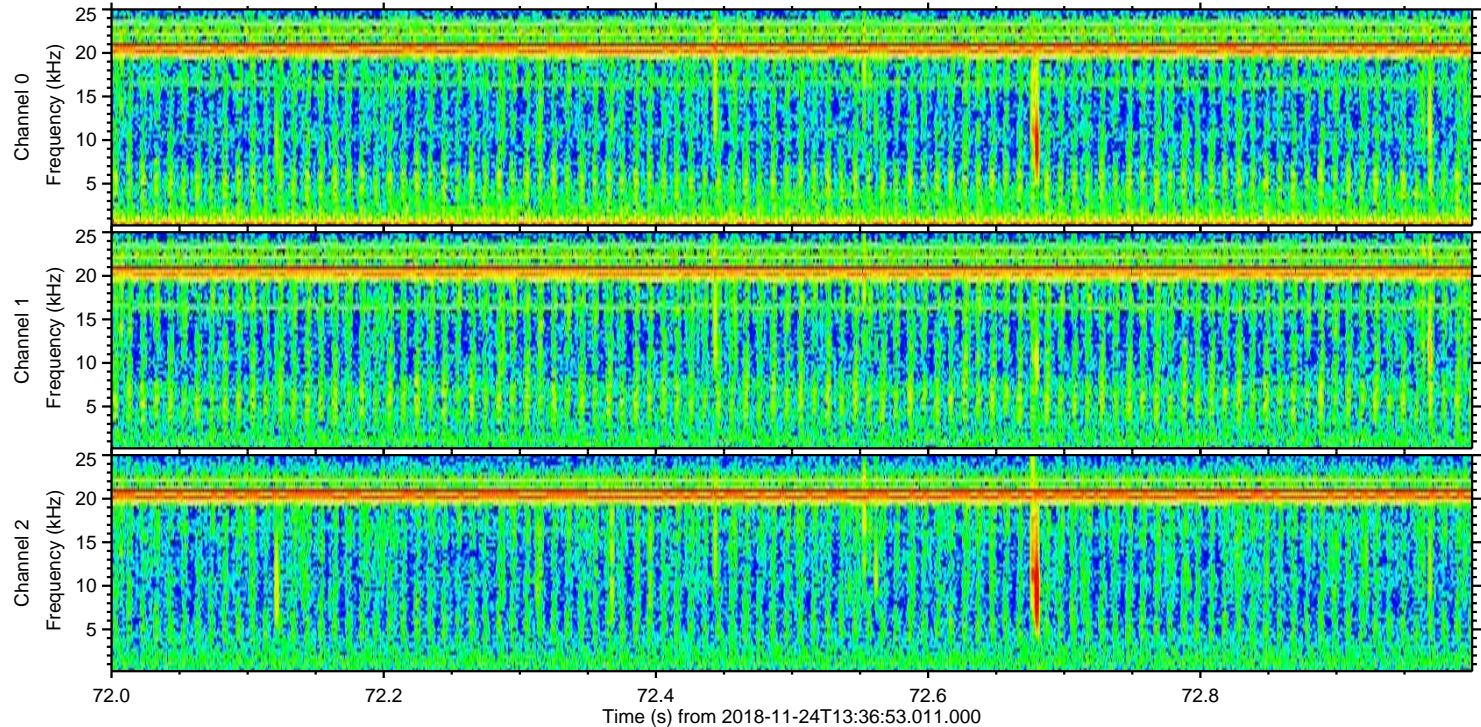
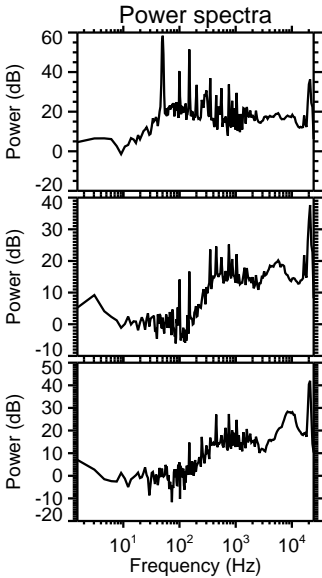
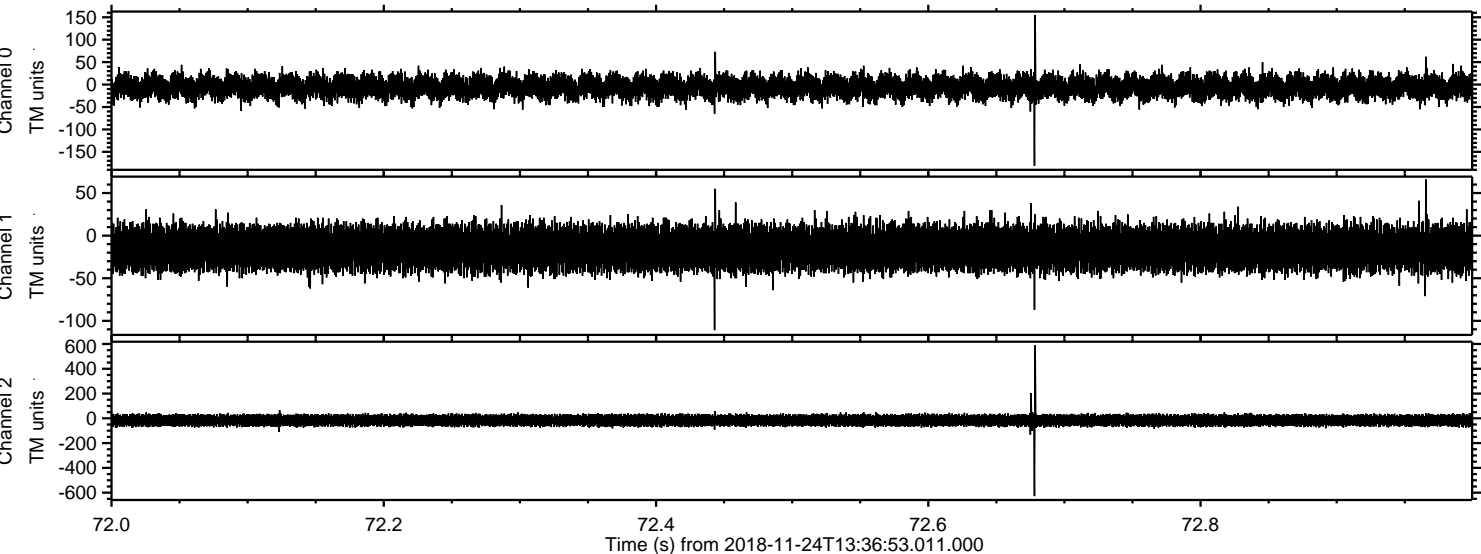


Processed Sat Nov 24 14:45:26 2018 by ELM ver.2012-10-06 from 001\_\_elm20181124\_133652\_\_dat00.bin



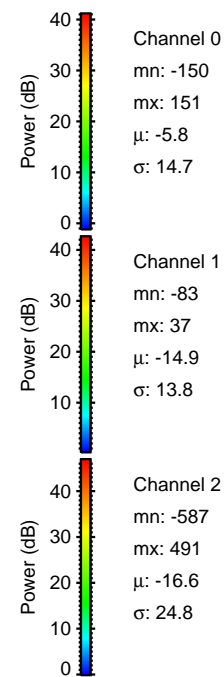
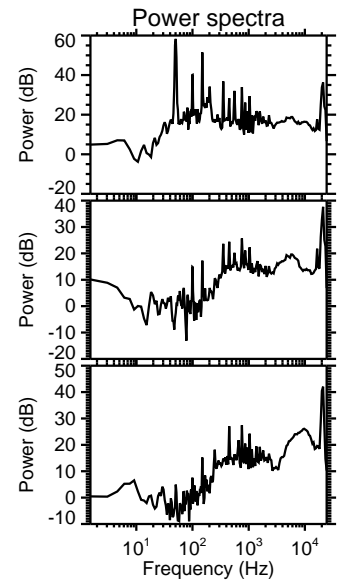
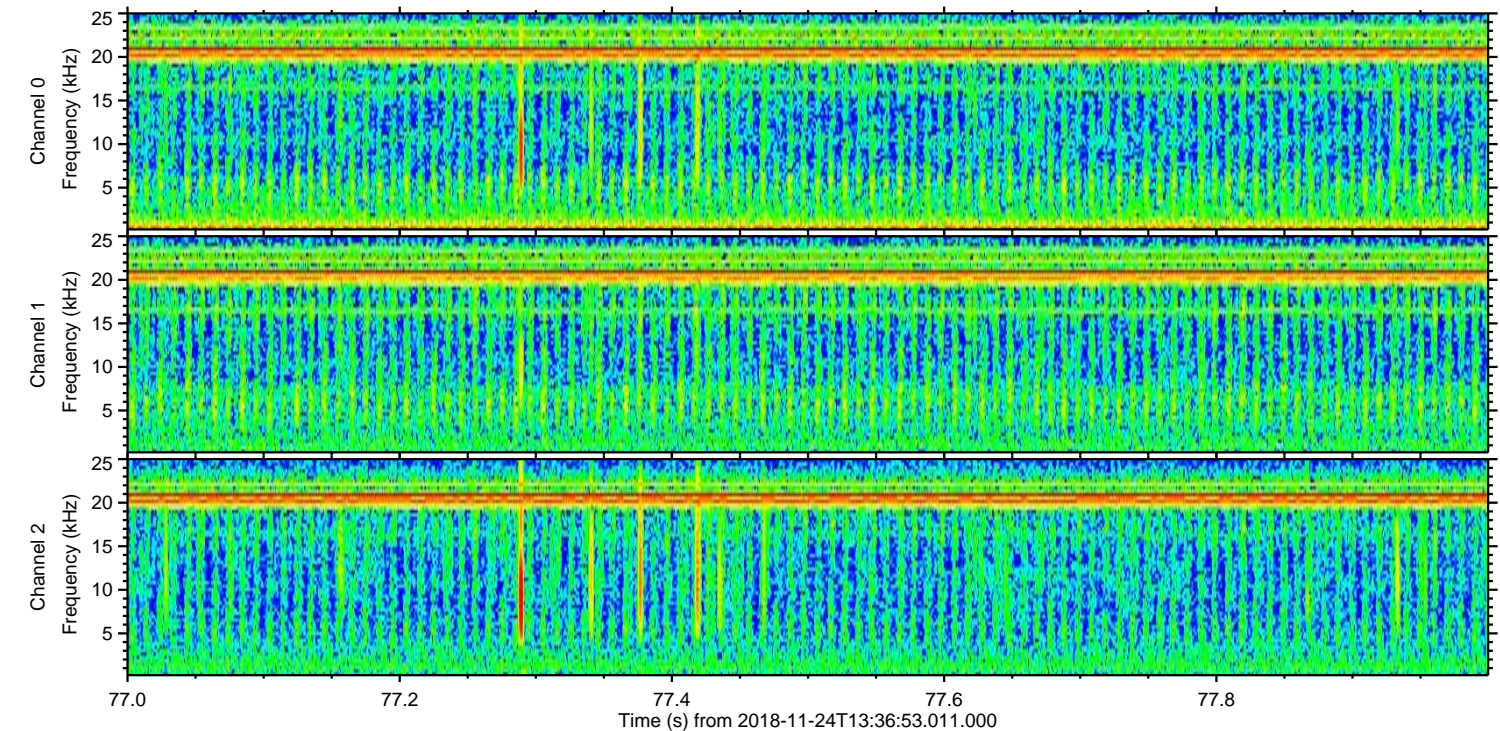
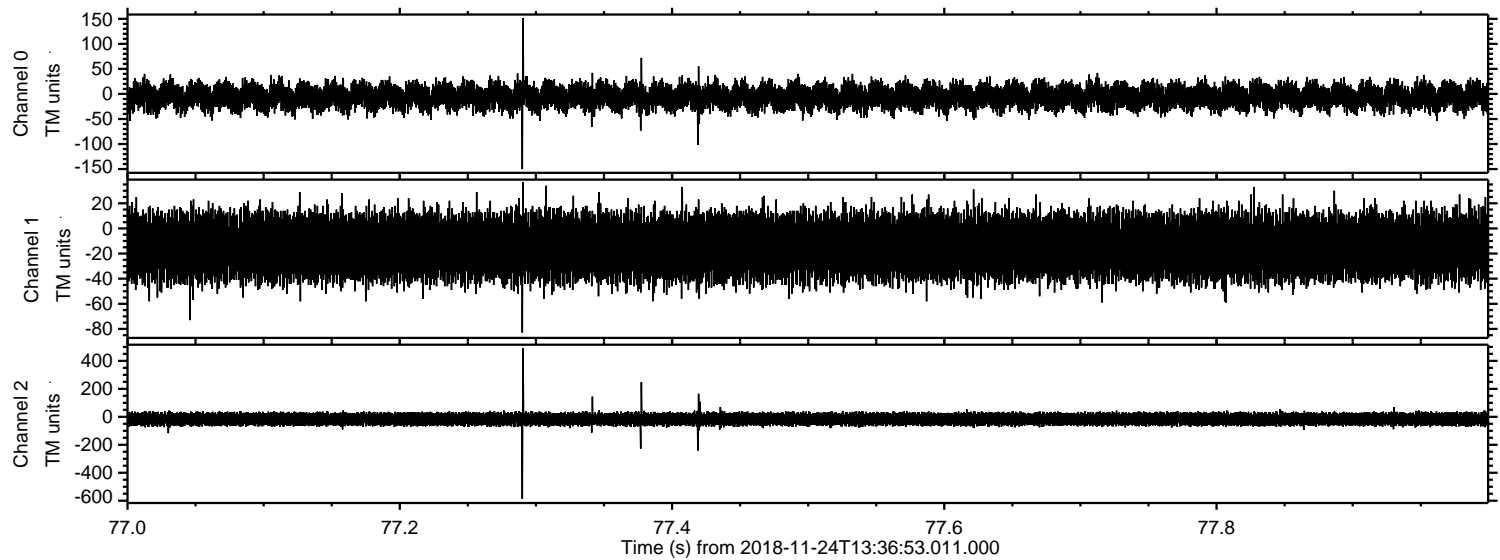


Processed Sat Nov 24 14:45:27 2018 by ELM ver.2012-10-06 from 001\_\_elm20181124\_133652\_\_dat00.bin



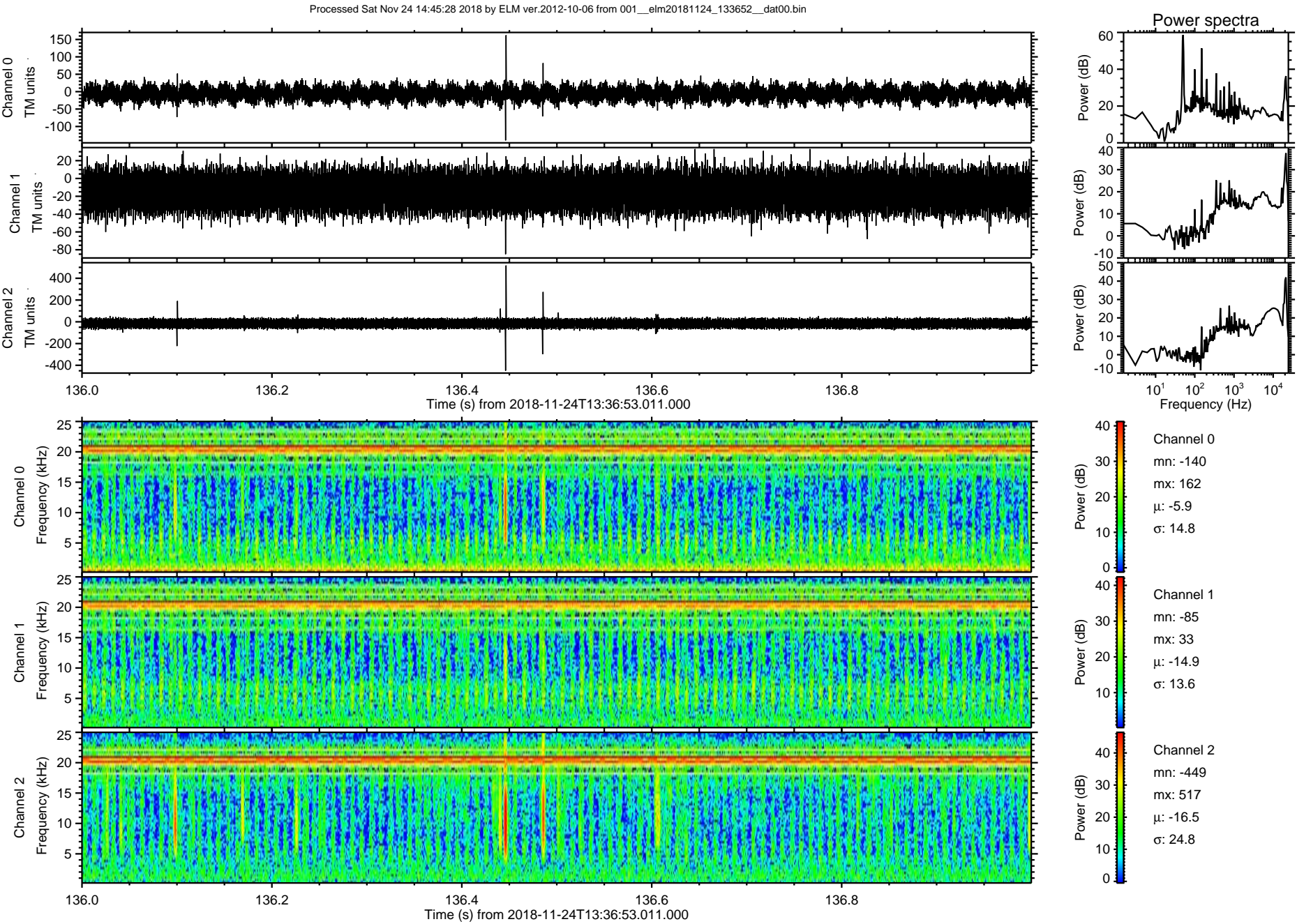


Processed Sat Nov 24 14:45:27 2018 by ELM ver.2012-10-06 from 001\_\_elm20181124\_133652\_\_dat00.bin



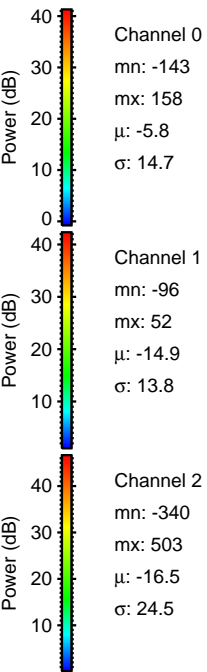
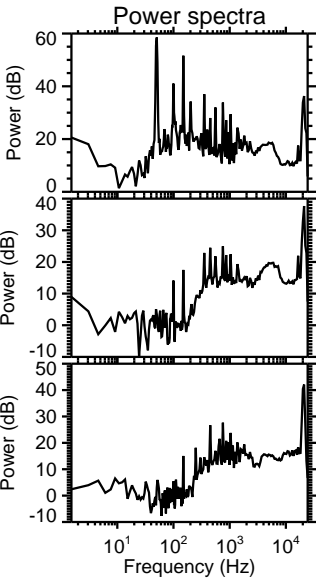
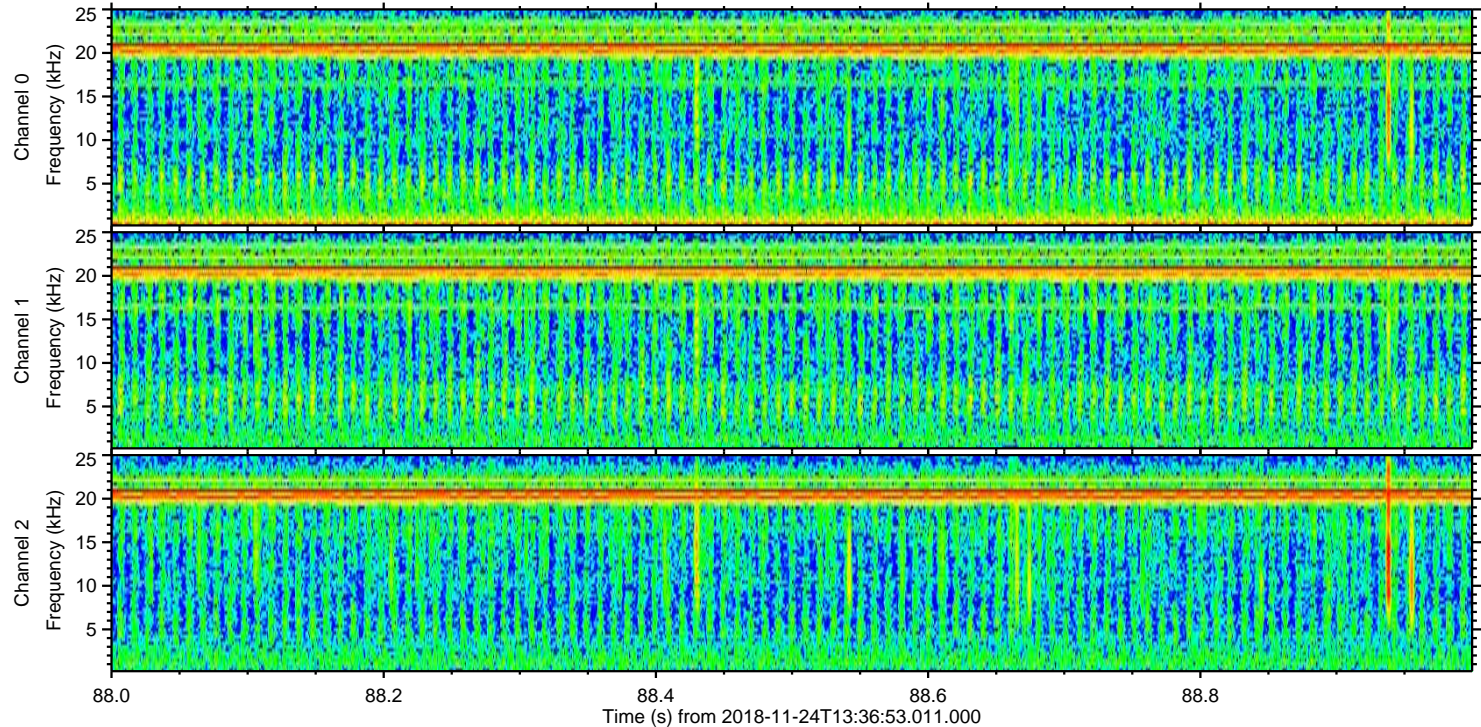
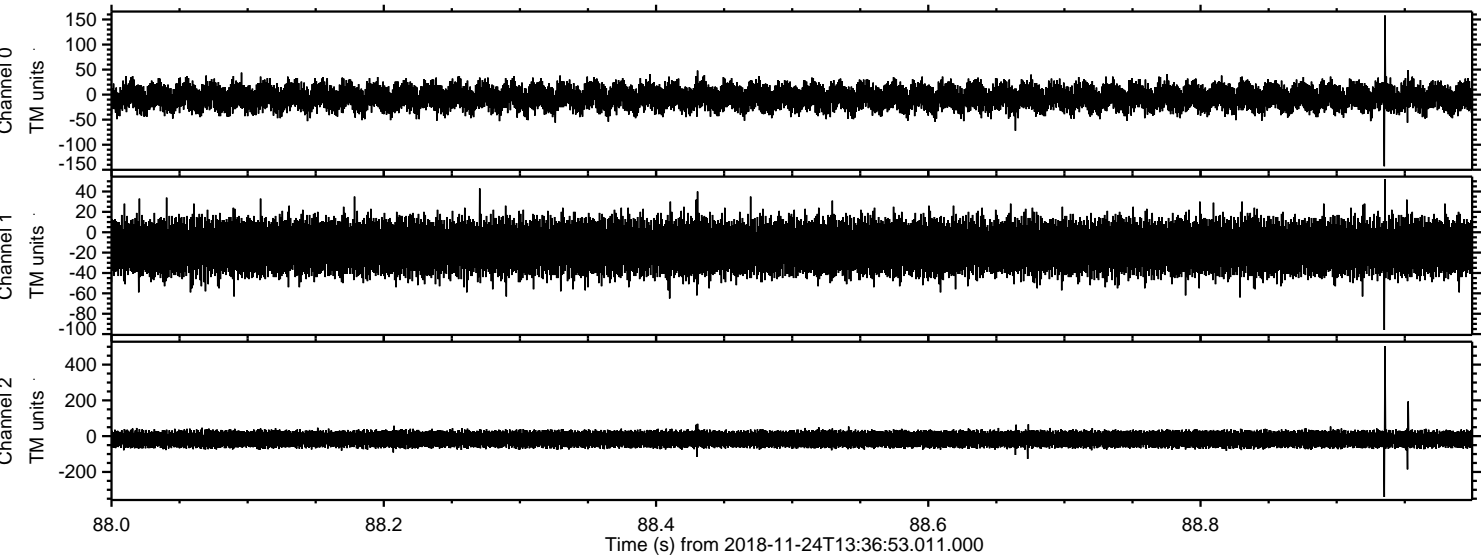


ELMAVAN 3D WAVEFORMS (Measured data sampled at 50 kHz) 51000 packets of 144 samples from 2018-11-24T13:36:53.011.000. Part 137/147



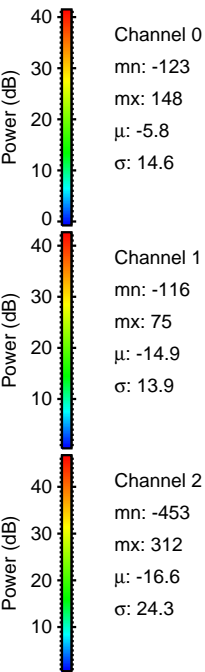
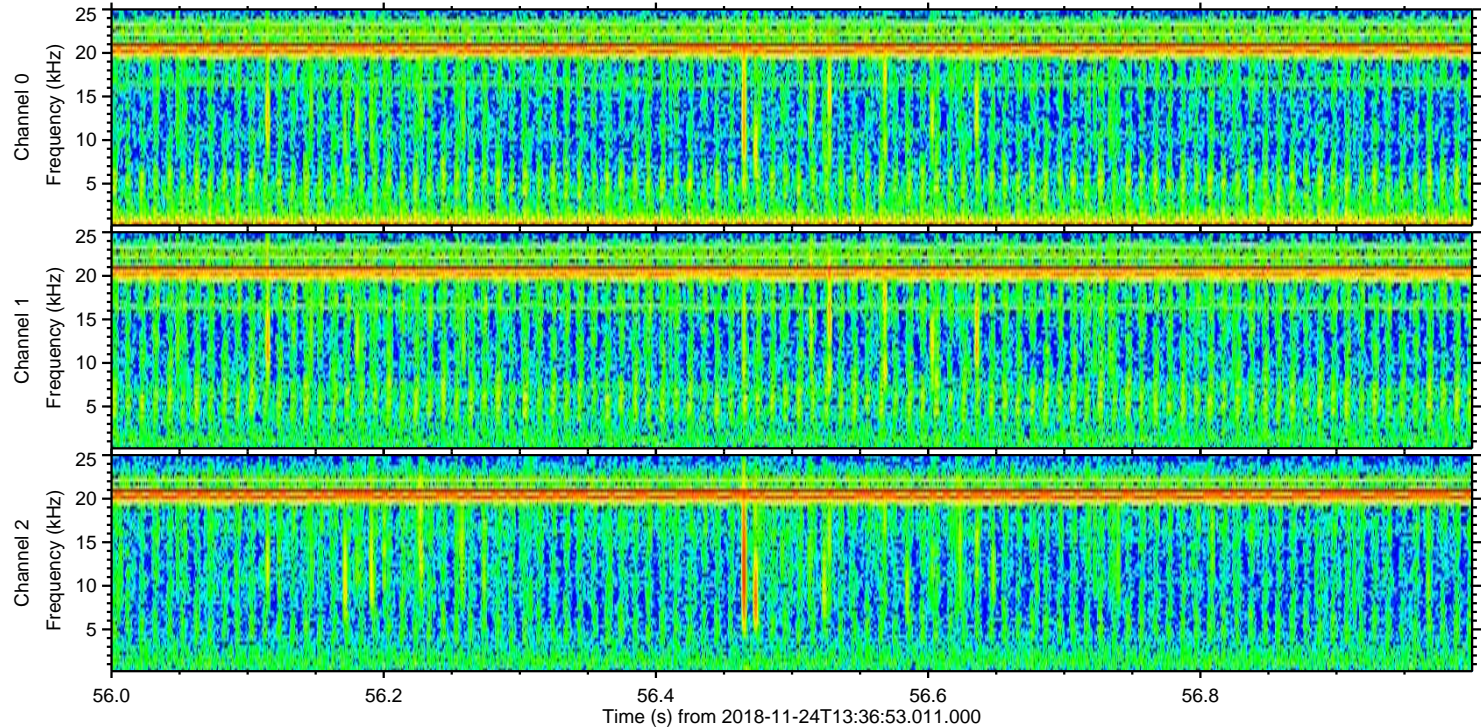
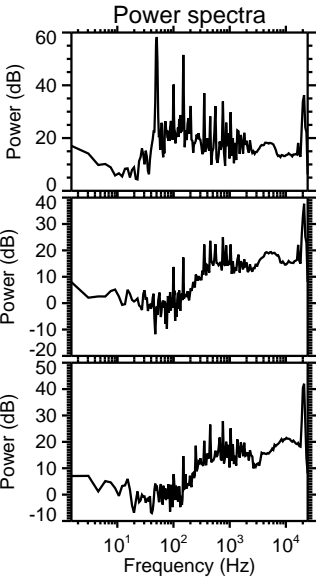
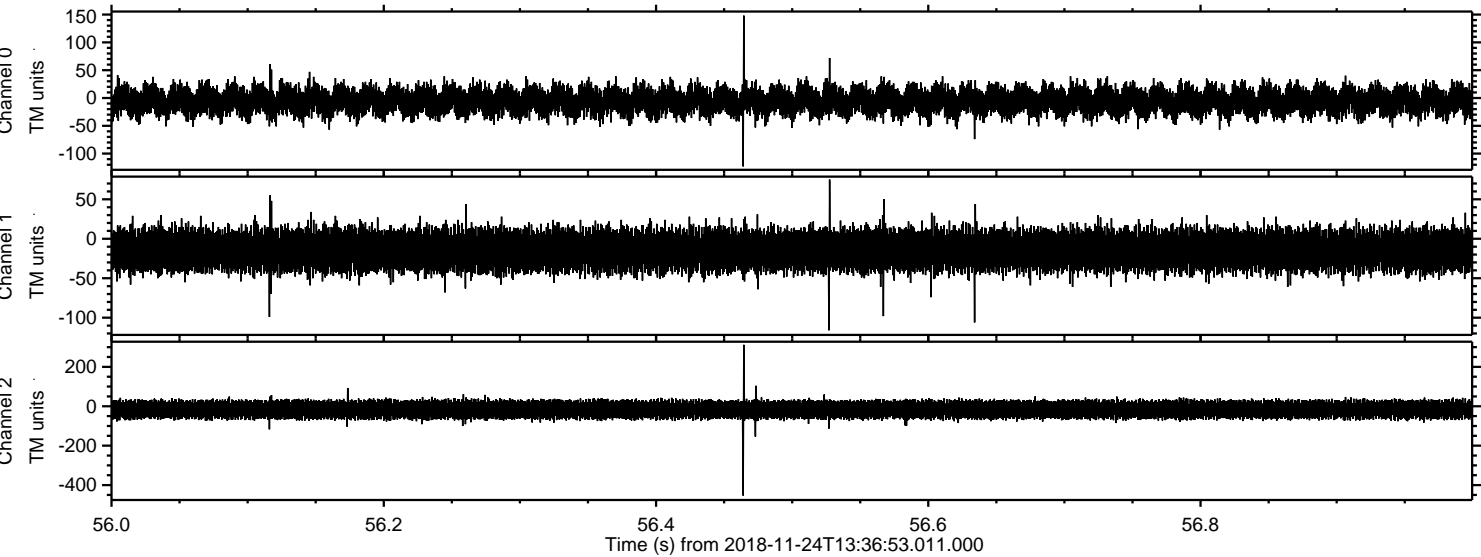


Processed Sat Nov 24 14:45:29 2018 by ELM ver.2012-10-06 from 001\_\_elm20181124\_133652\_\_dat00.bin



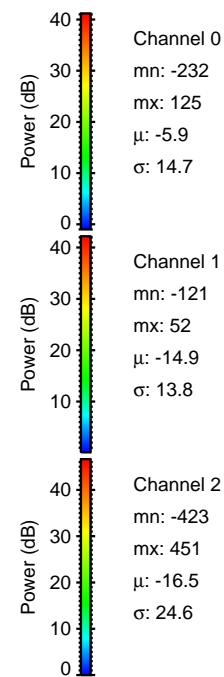
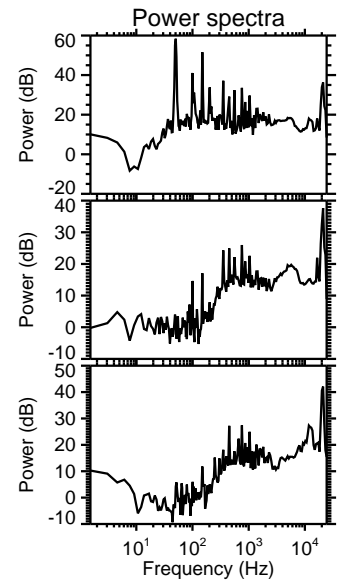
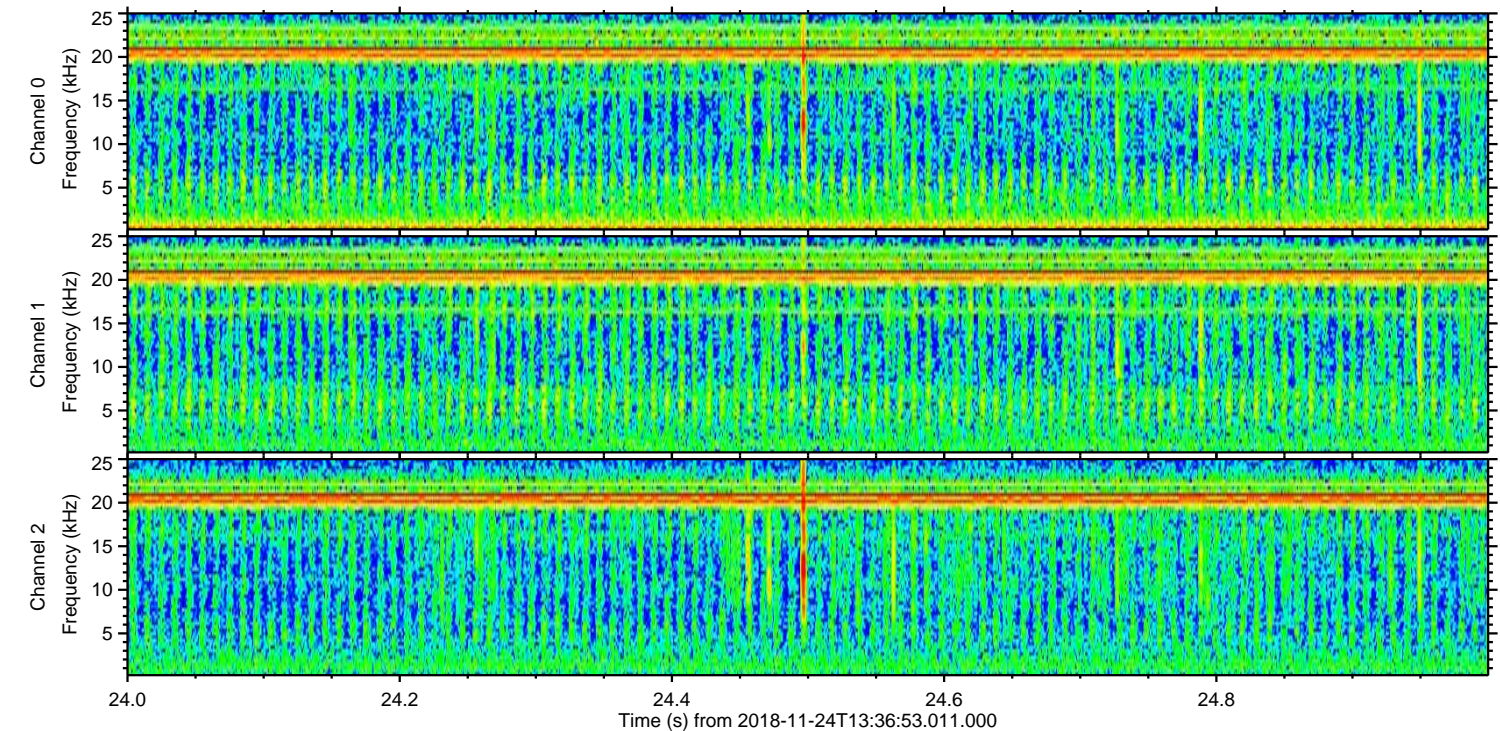
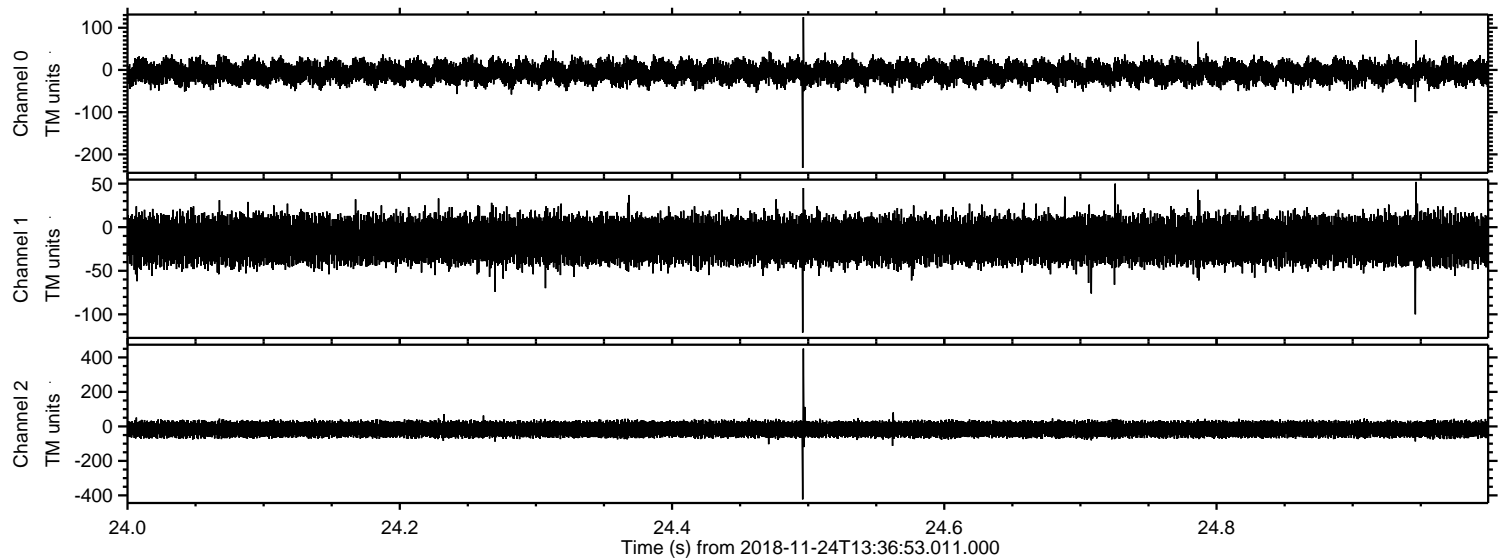


Processed Sat Nov 24 14:45:30 2018 by ELM ver.2012-10-06 from 001\_\_elm20181124\_133652\_\_dat00.bin





Processed Sat Nov 24 14:45:30 2018 by ELM ver.2012-10-06 from 001\_\_elm20181124\_133652\_\_dat00.bin



Channel 0  
mn: -232  
mx: 125  
 $\mu$ : -5.9  
 $\sigma$ : 14.7

Channel 1  
mn: -121  
mx: 52  
 $\mu$ : -14.9  
 $\sigma$ : 13.8

Channel 2  
mn: -423  
mx: 451  
 $\mu$ : -16.5  
 $\sigma$ : 24.6



