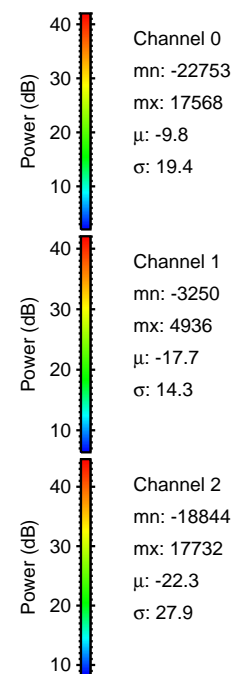
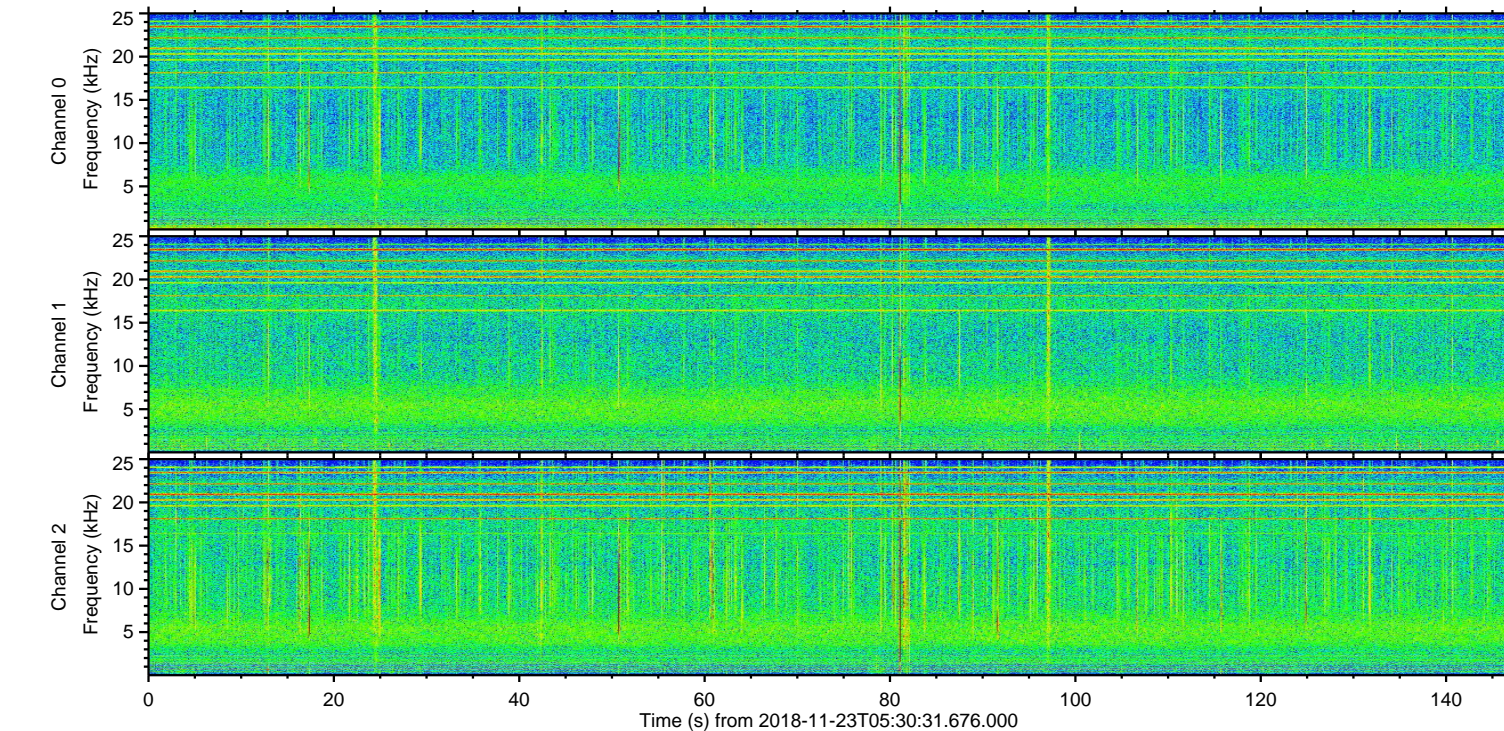
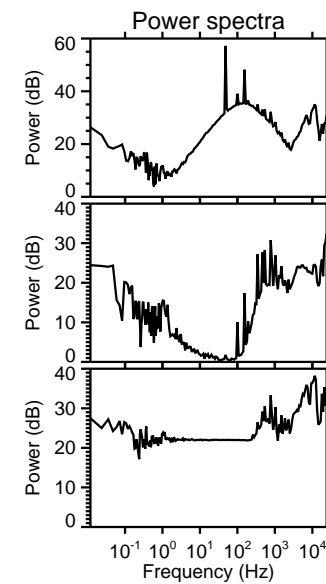
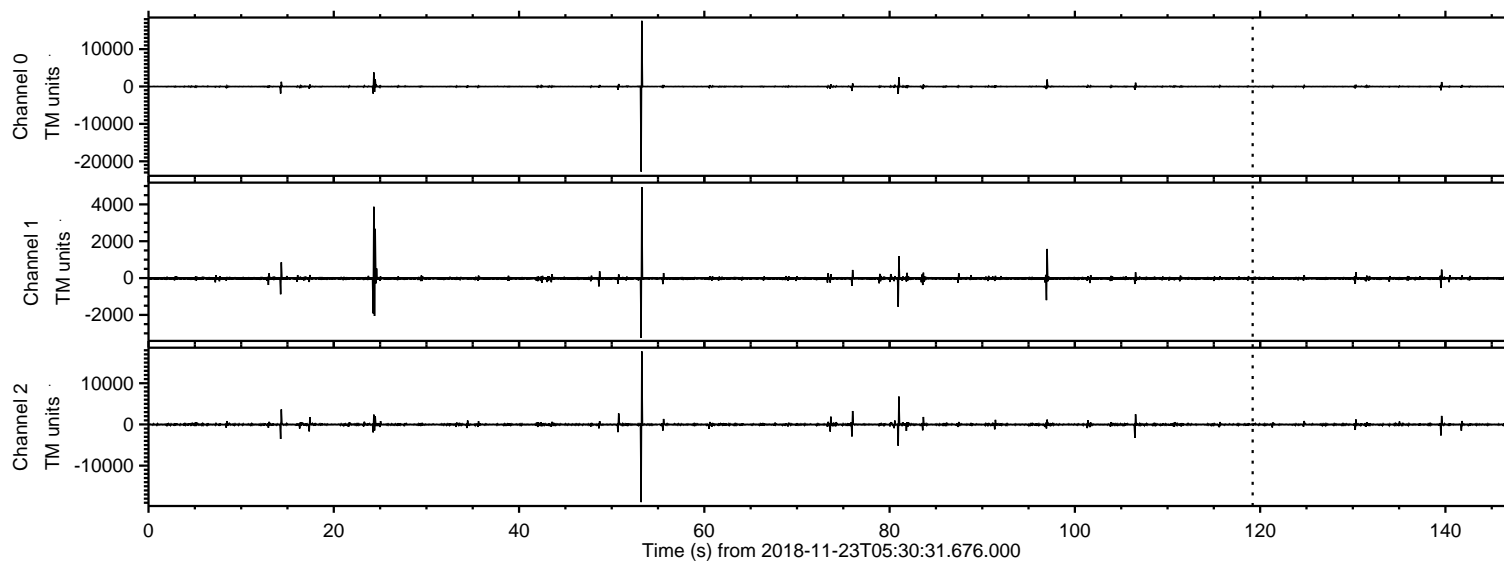
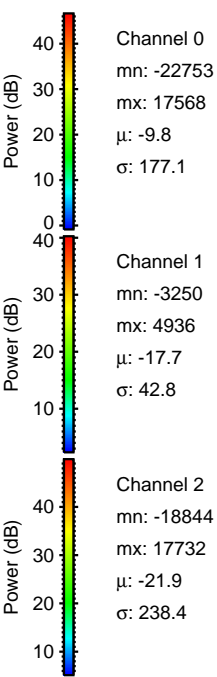
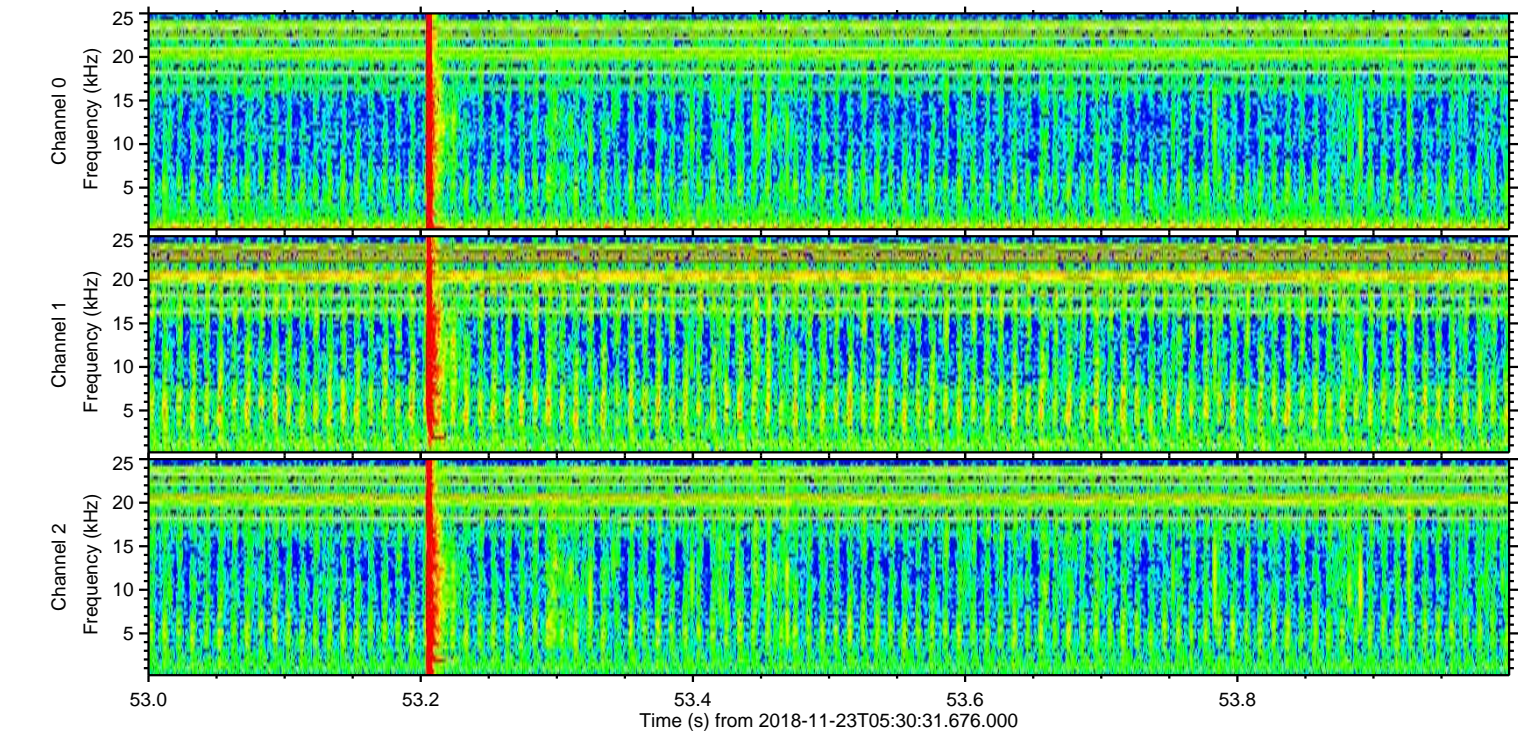
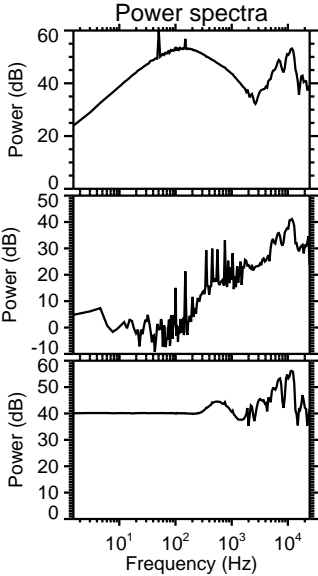
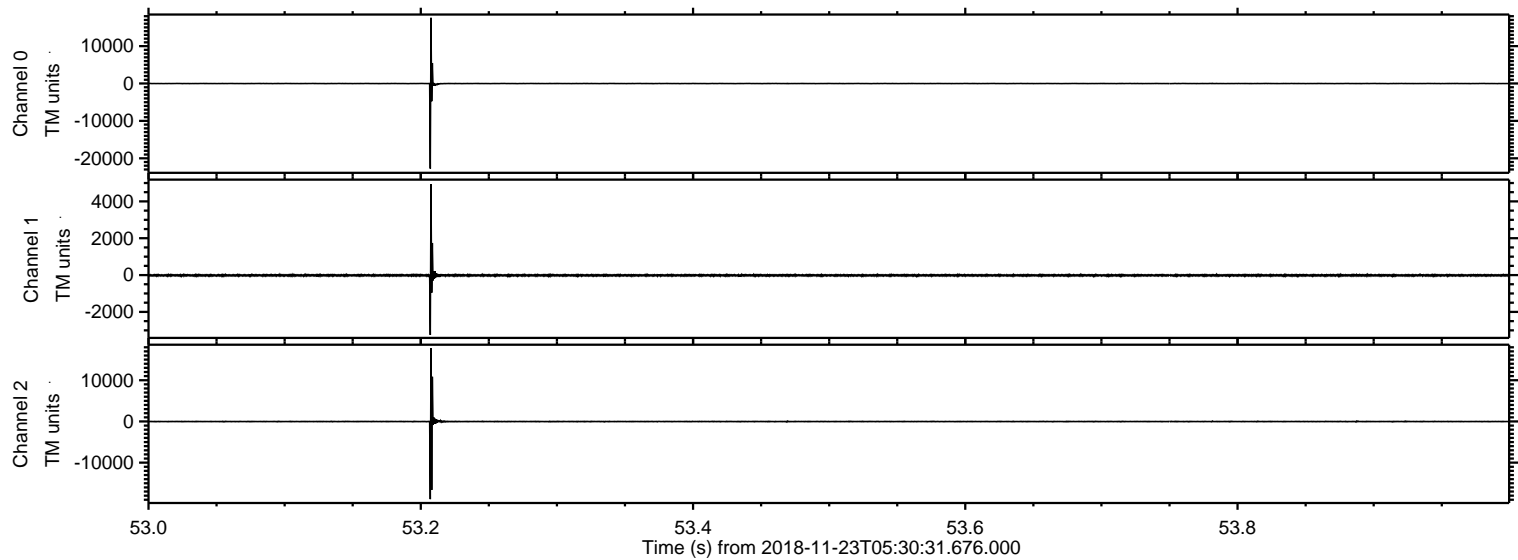


ELMAVAN 3D WAVEFORMS (Measured data sampled at 50 kHz) 50999 packets of 144 samples from 2018-11-23T05:30:31.676.000.

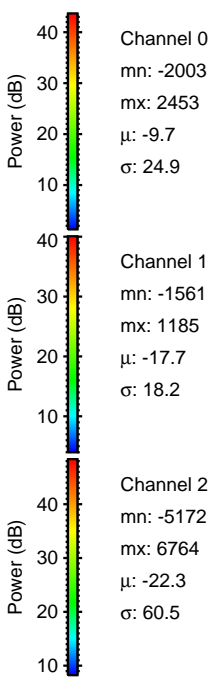
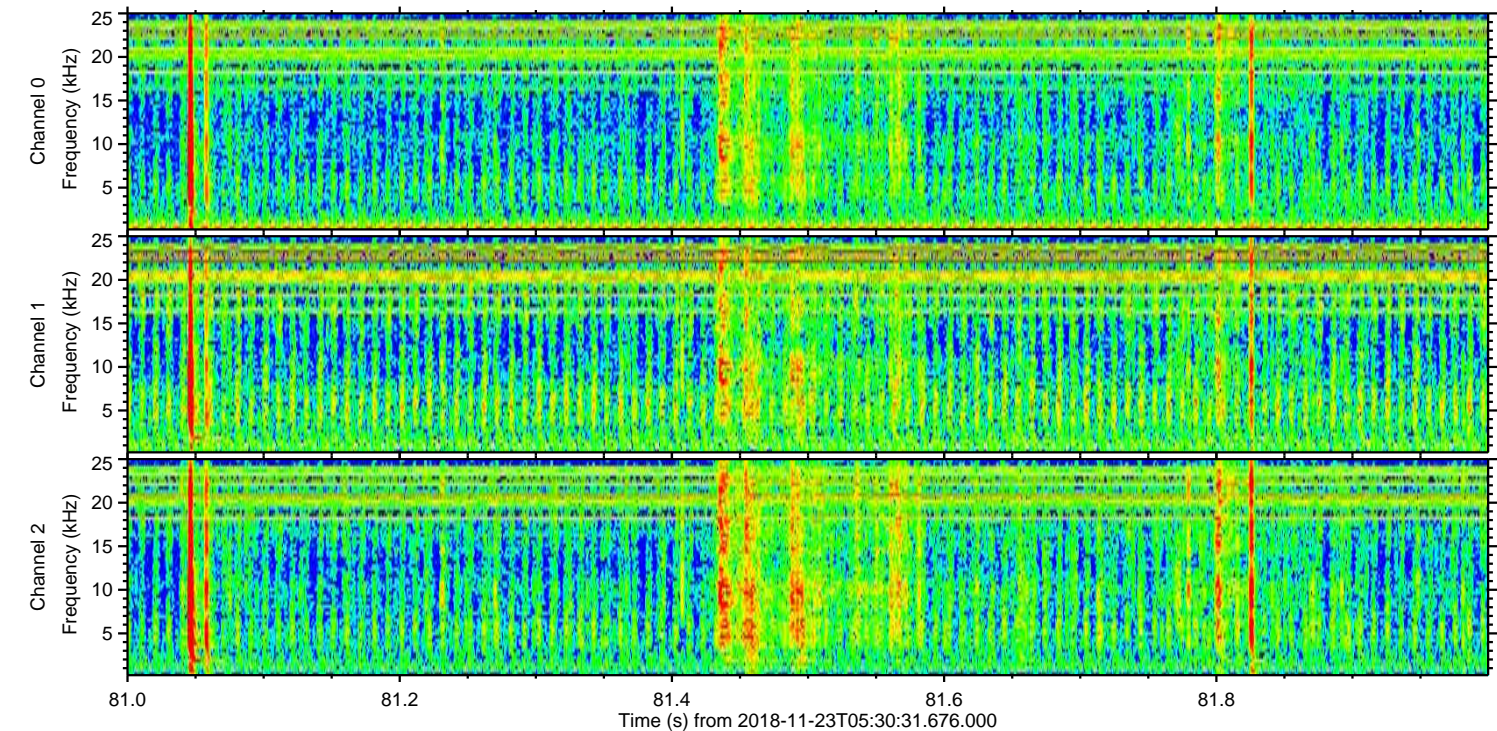
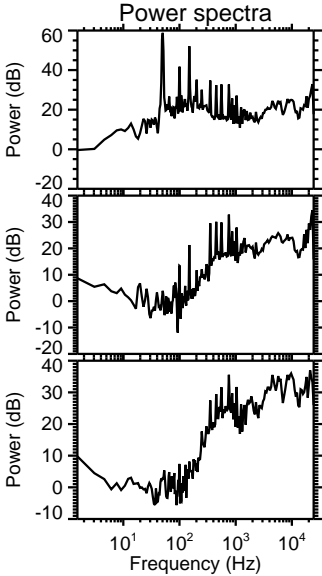
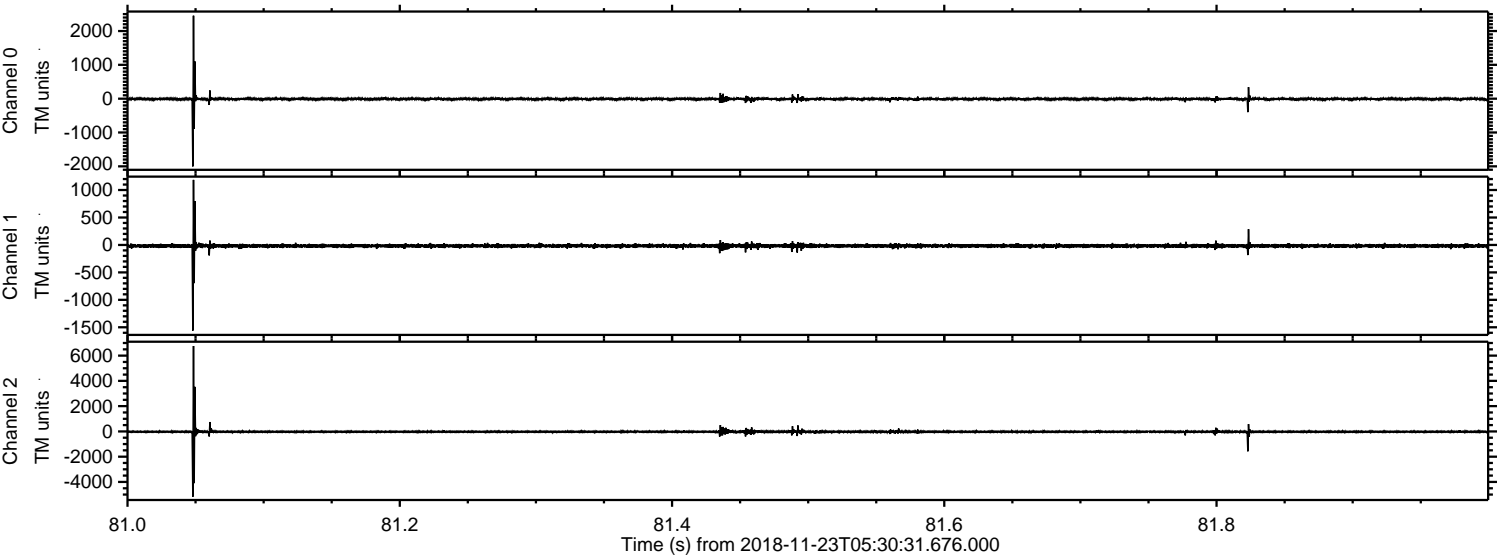
Processed Fri Nov 23 06:38:50 2018 by ELM ver.2012-10-06 from 001__elm20181123_053030__dat00.bin



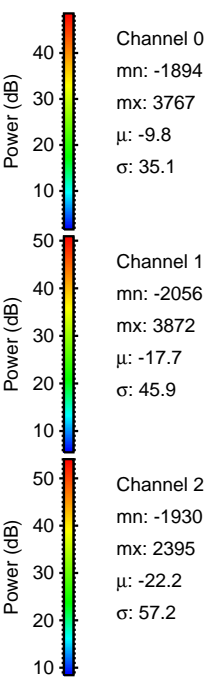
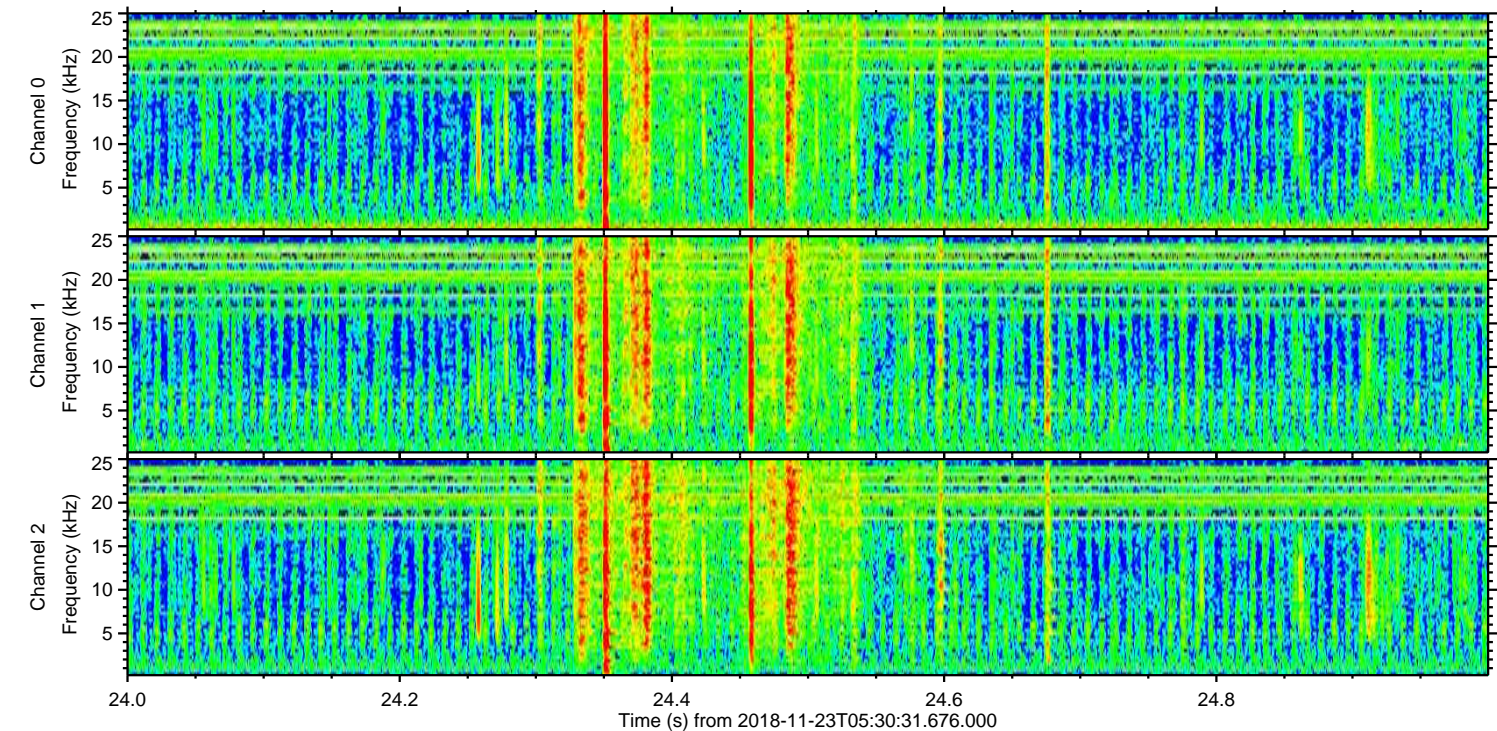
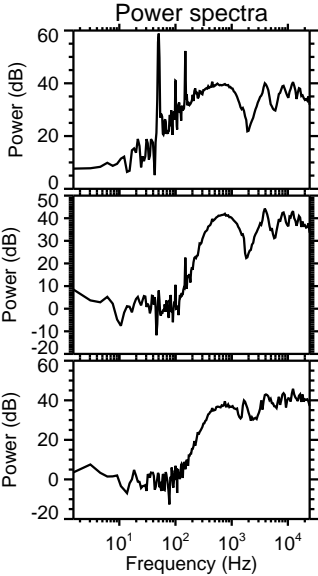
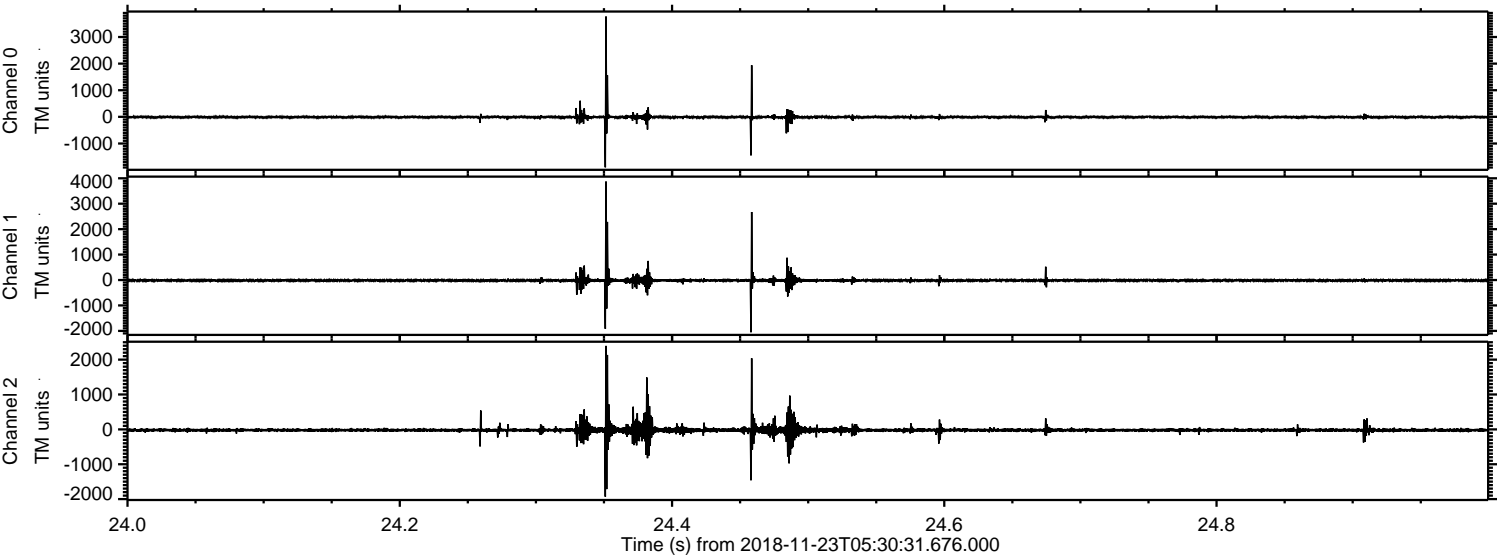
Processed Fri Nov 23 06:38:59 2018 by ELM ver.2012-10-06 from 001__elm20181123_053030__dat00.bin



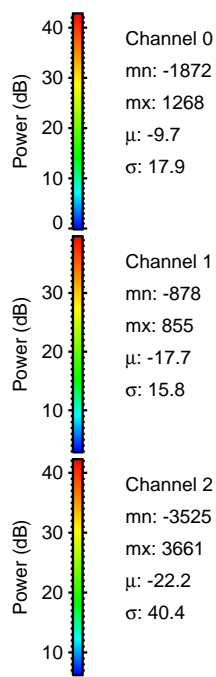
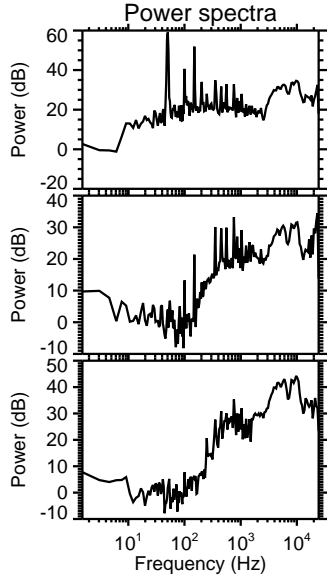
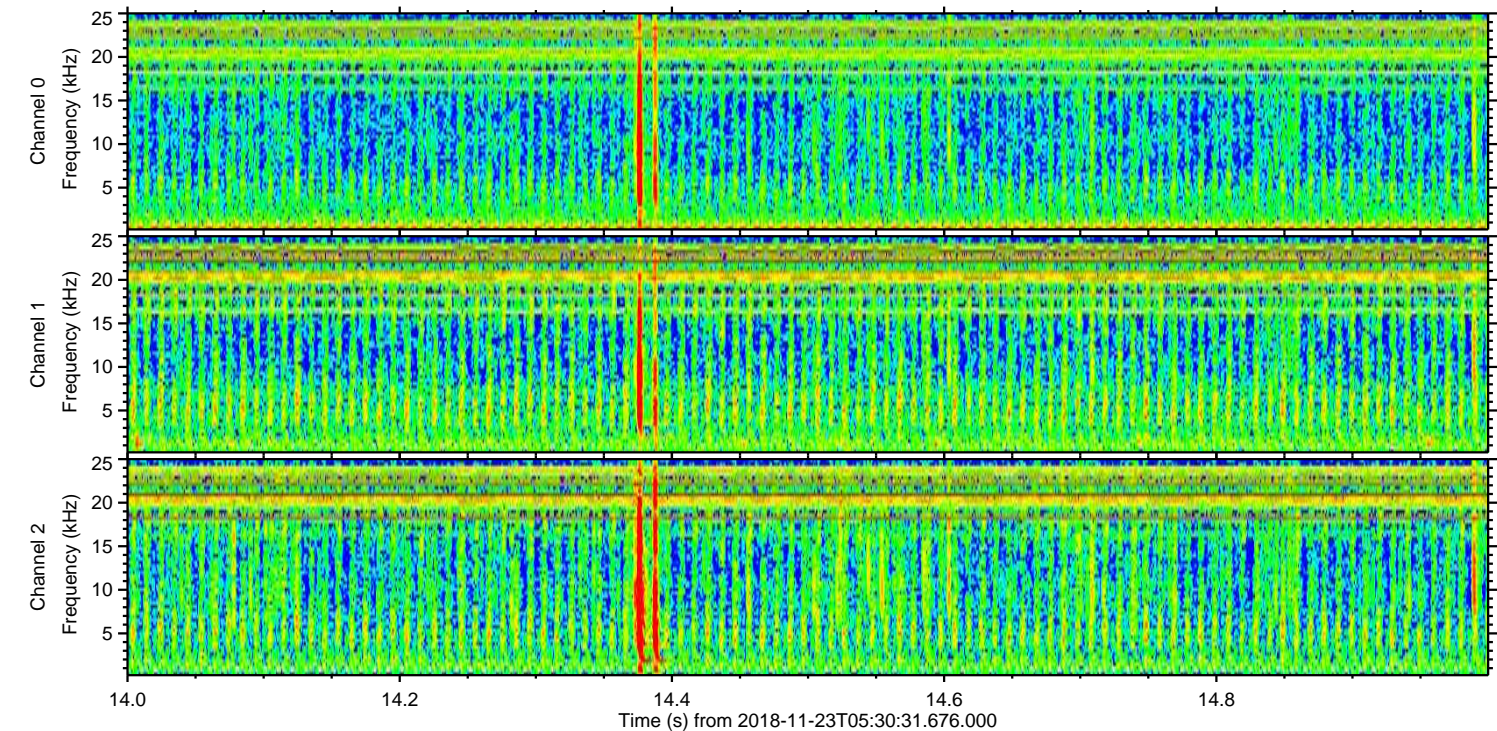
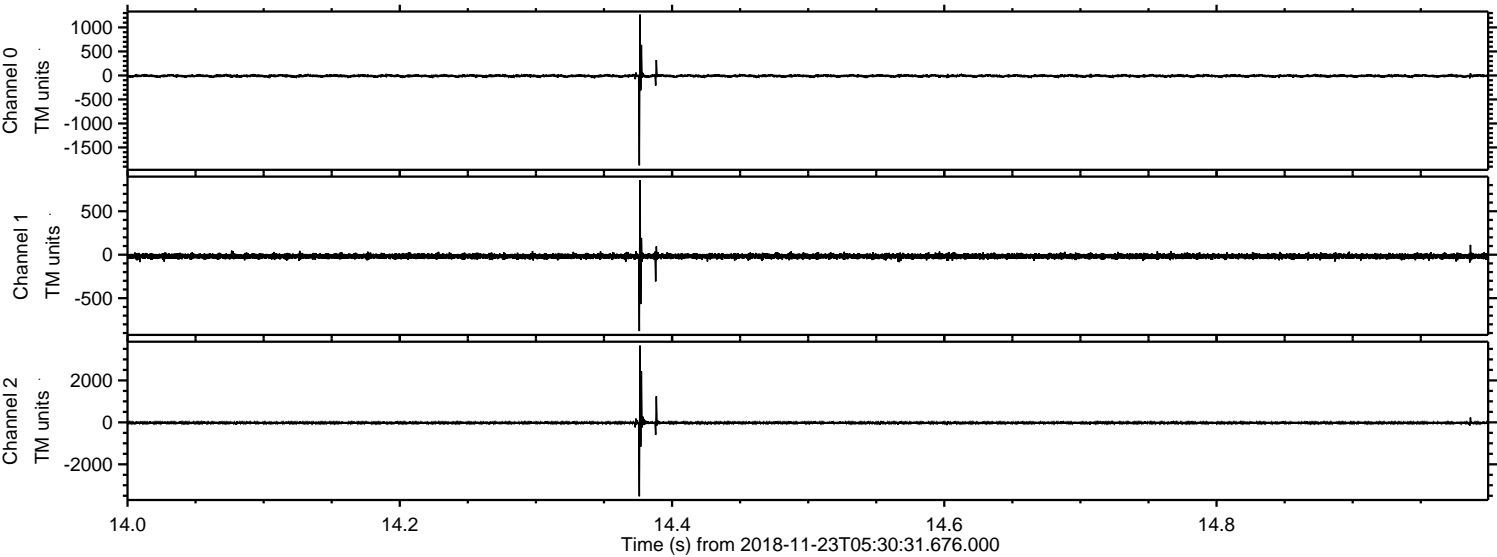
Processed Fri Nov 23 06:39:00 2018 by ELM ver.2012-10-06 from 001__elm20181123_053030__dat00.bin



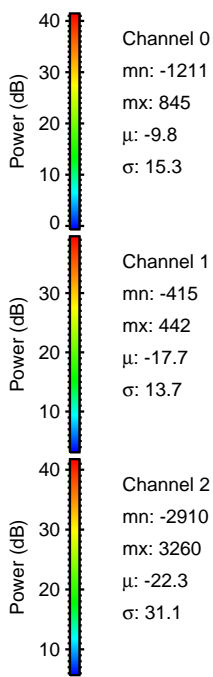
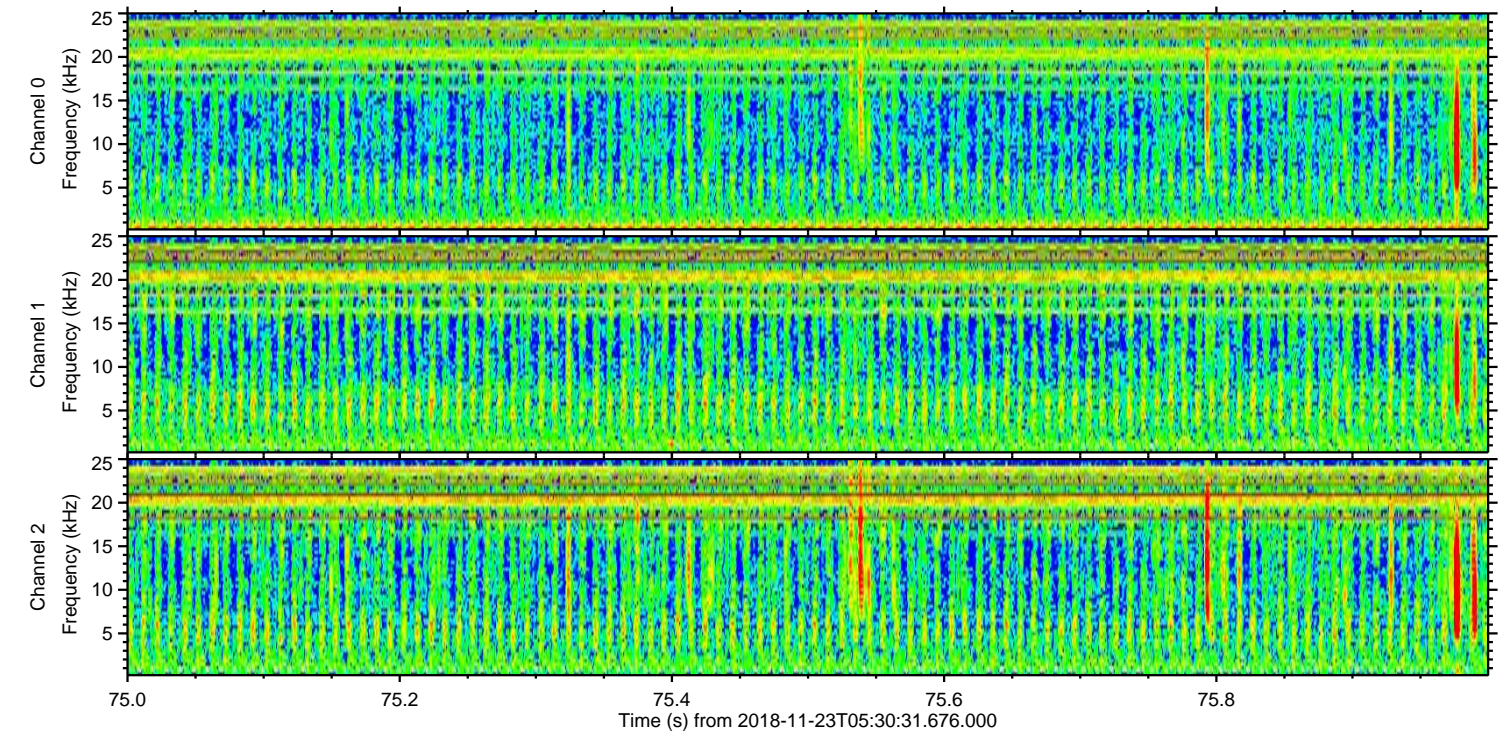
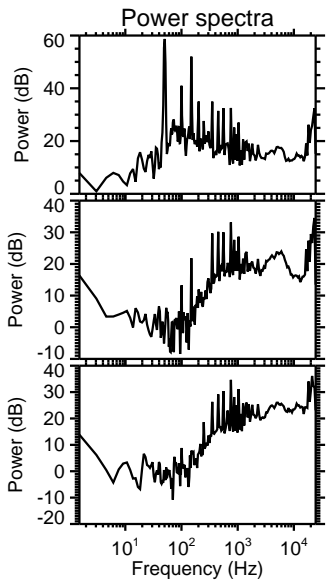
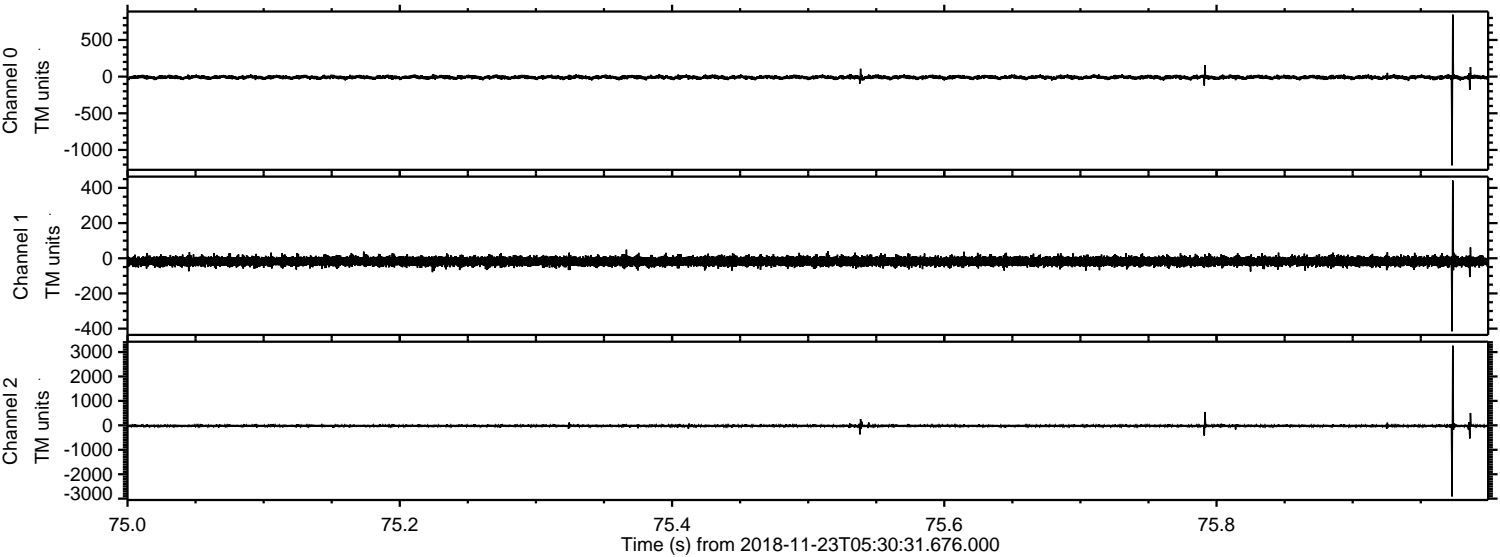
Processed Fri Nov 23 06:39:01 2018 by ELM ver.2012-10-06 from 001__elm20181123_053030__dat00.bin



Processed Fri Nov 23 06:39:02 2018 by ELM ver.2012-10-06 from 001__elm20181123_053030__dat00.bin

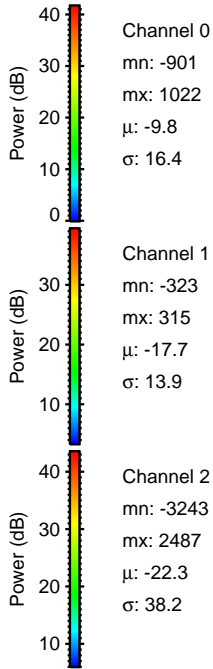
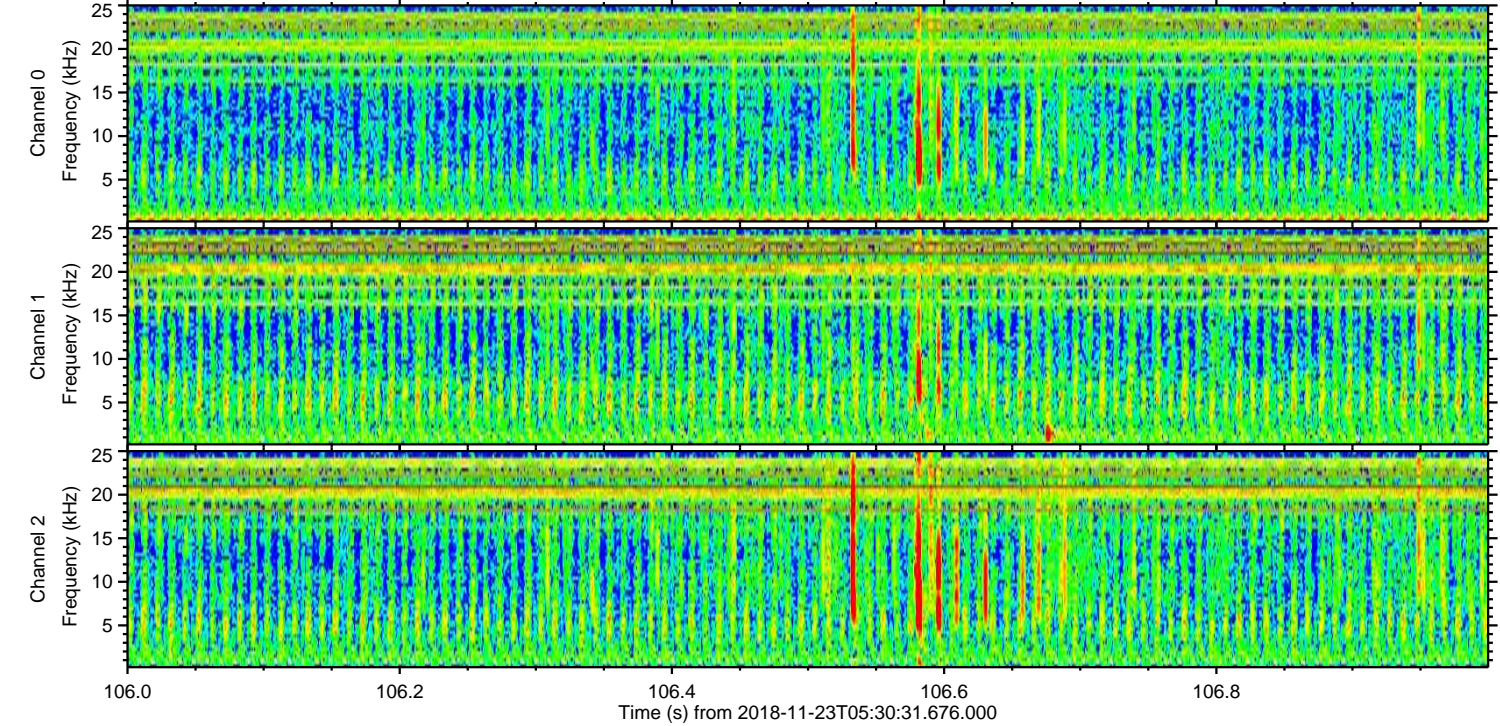
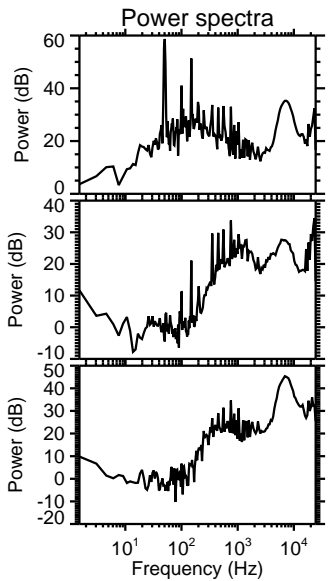
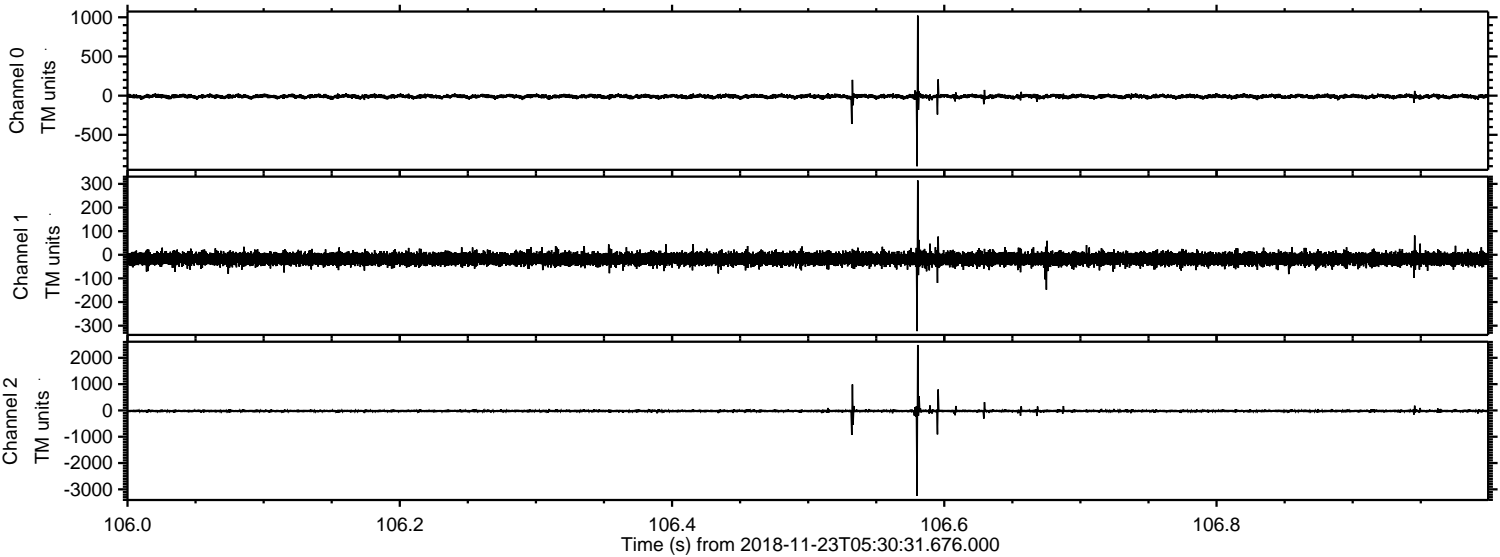


Processed Fri Nov 23 06:39:02 2018 by ELM ver.2012-10-06 from 001__elm20181123_053030__dat00.bin



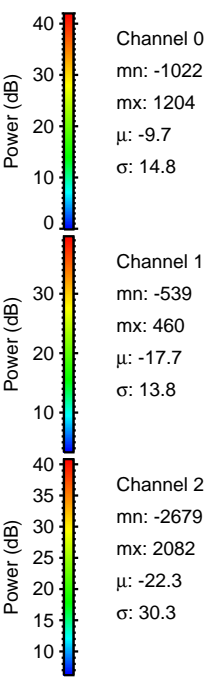
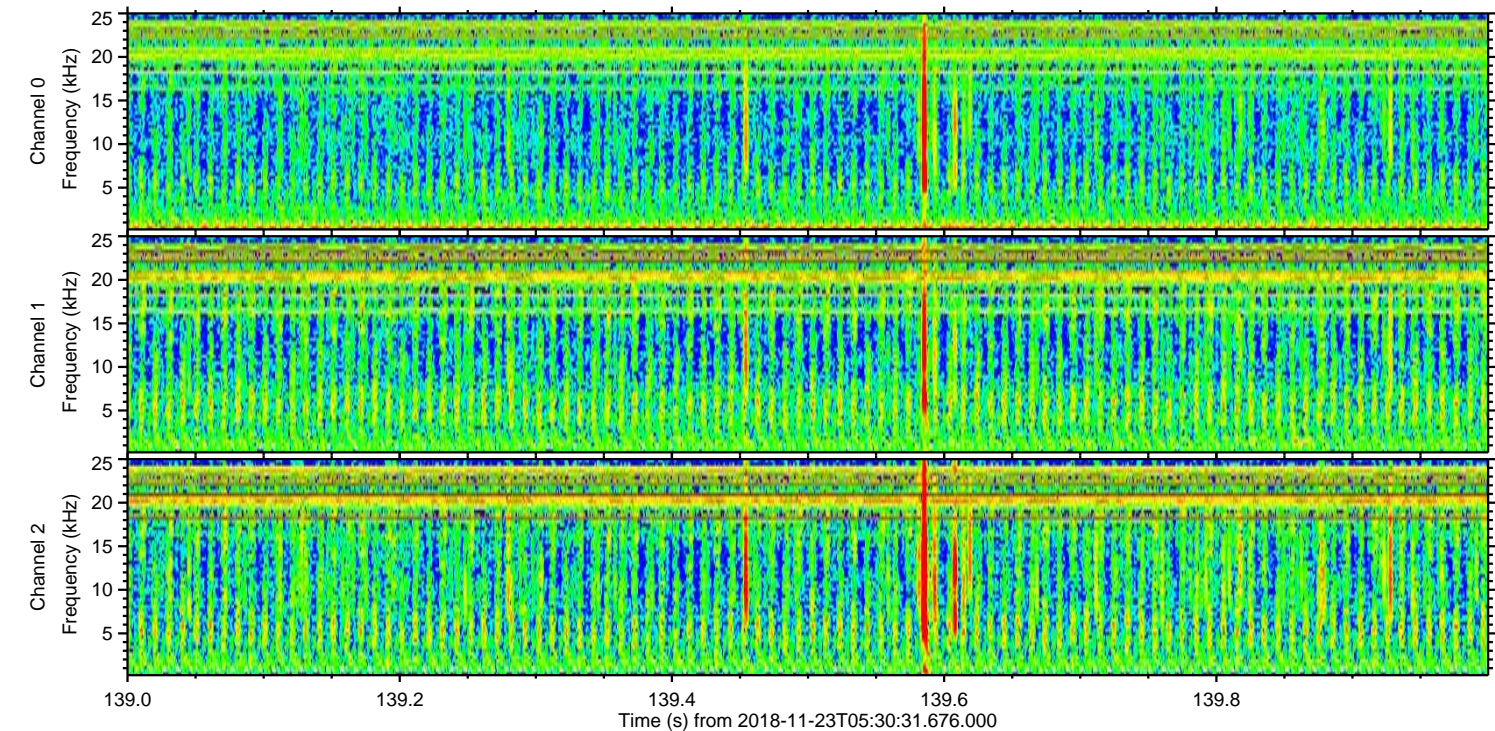
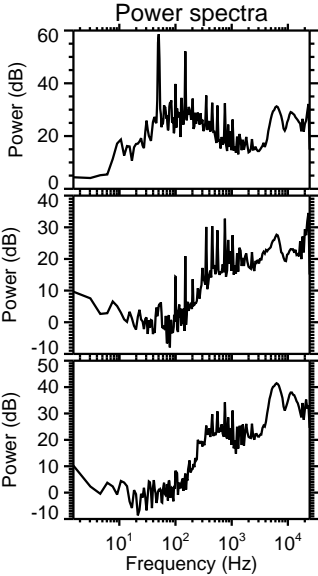
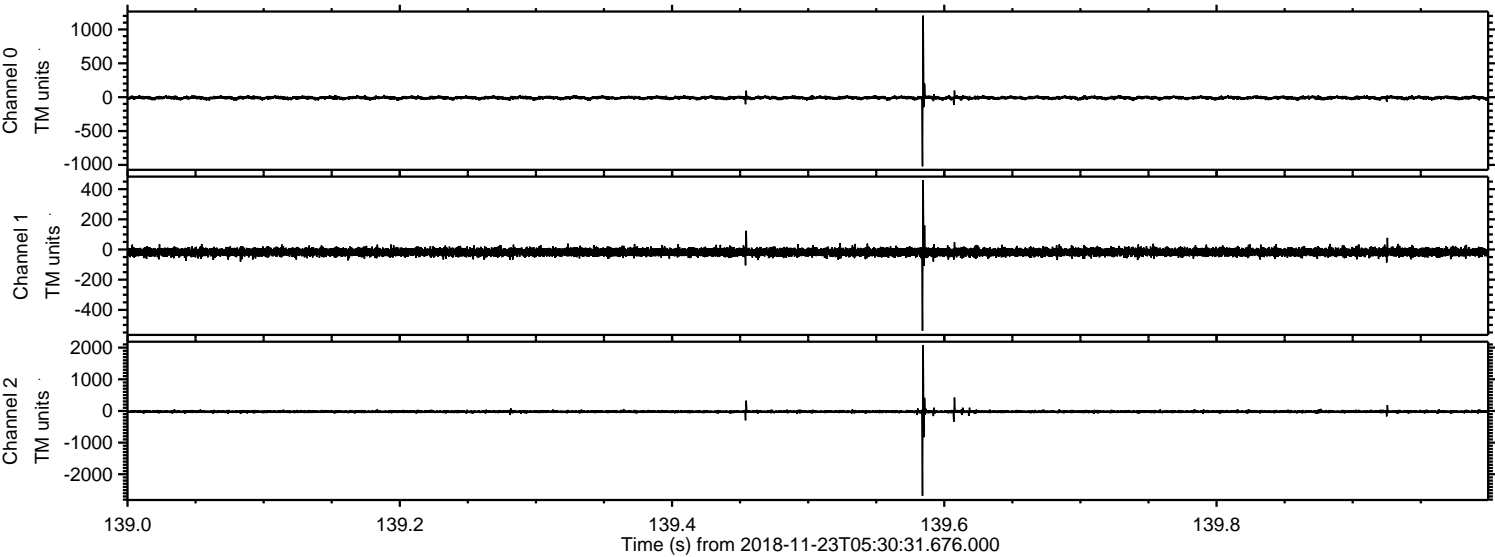
ELMAVAN 3D WAVEFORMS (Measured data sampled at 50 kHz) 50999 packets of 144 samples from 2018-11-23T05:30:31.676.000. Part 107/147

Processed Fri Nov 23 06:39:03 2018 by ELM ver.2012-10-06 from 001__elm20181123_053030__dat00.bin

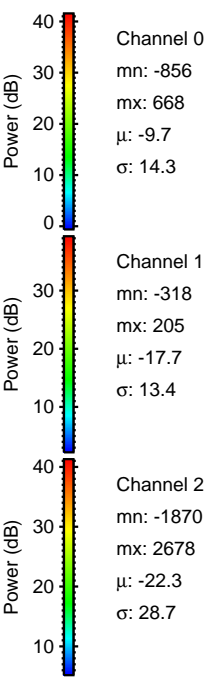
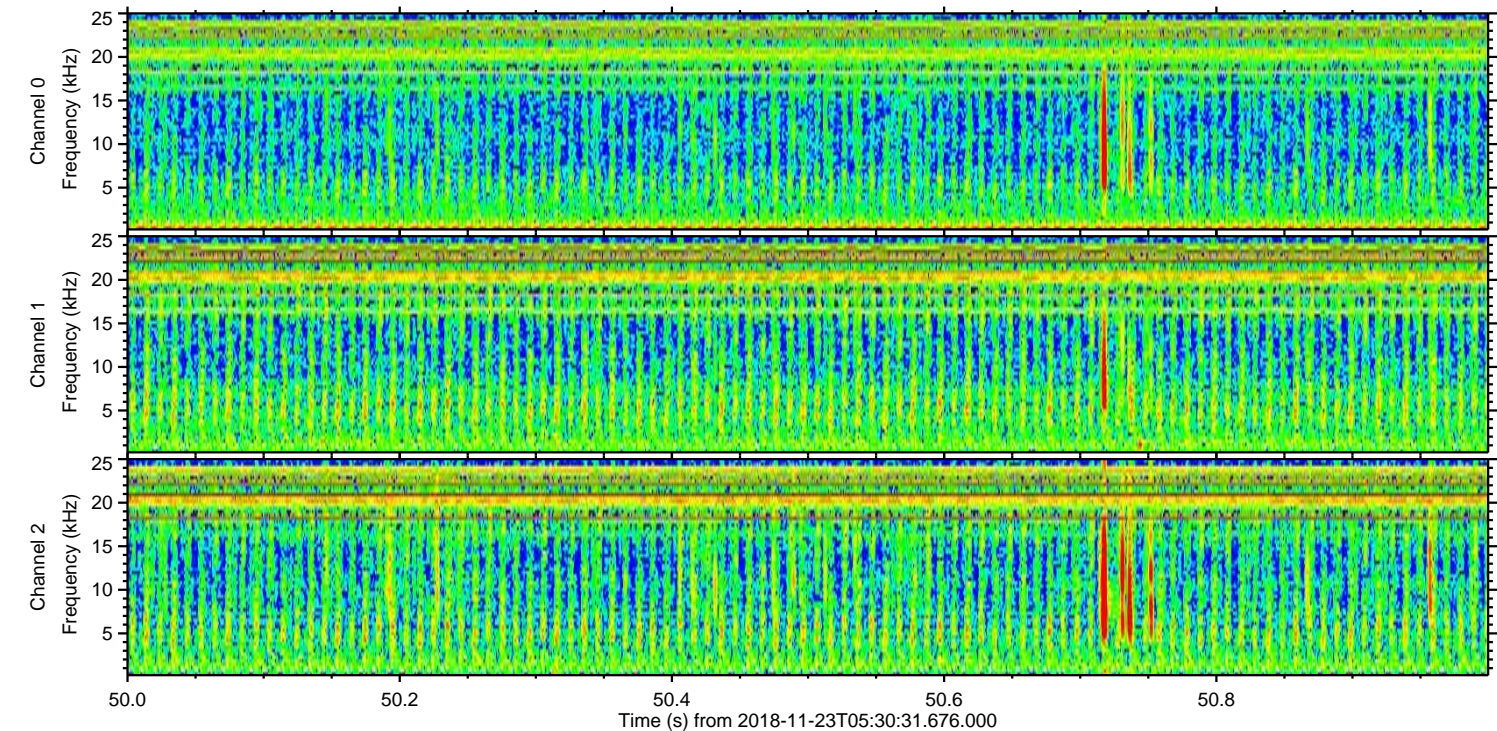
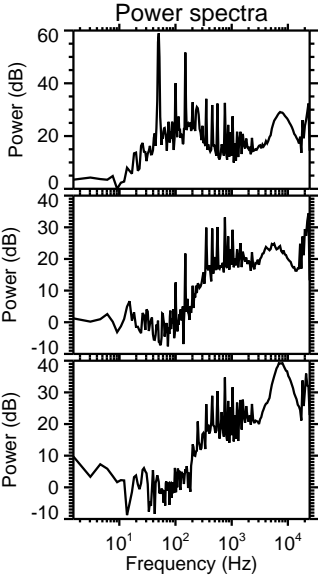
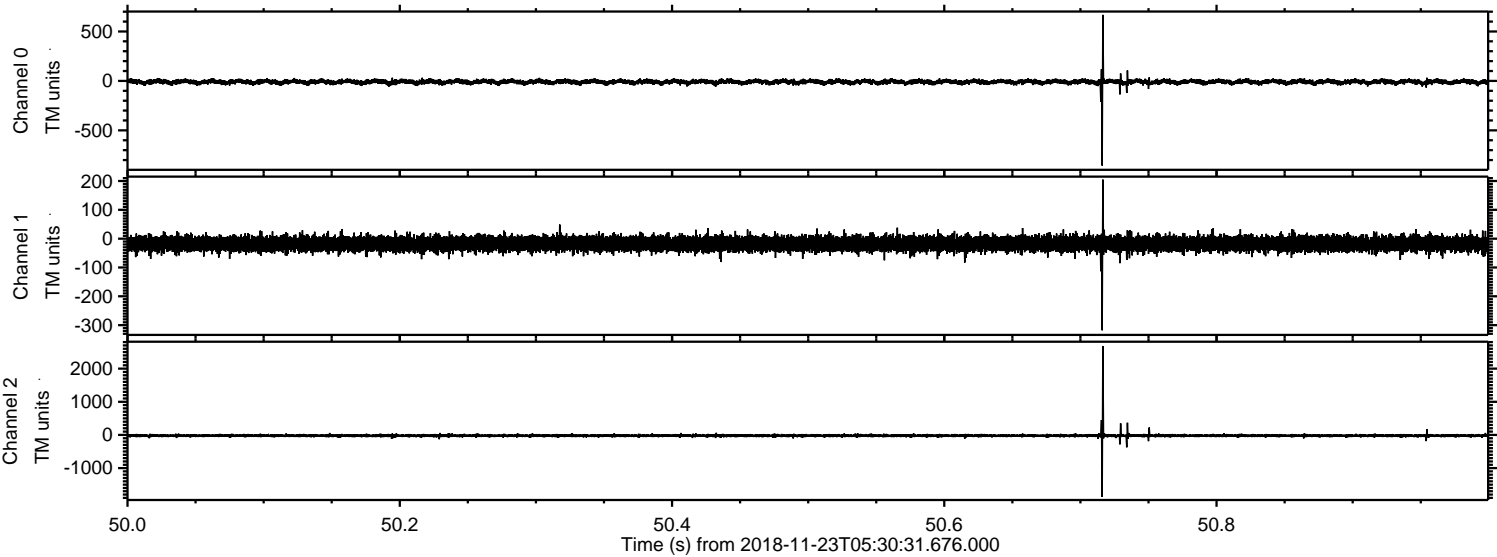


ELMAVAN 3D WAVEFORMS (Measured data sampled at 50 kHz) 50999 packets of 144 samples from 2018-11-23T05:30:31.676.000. Part 140/147

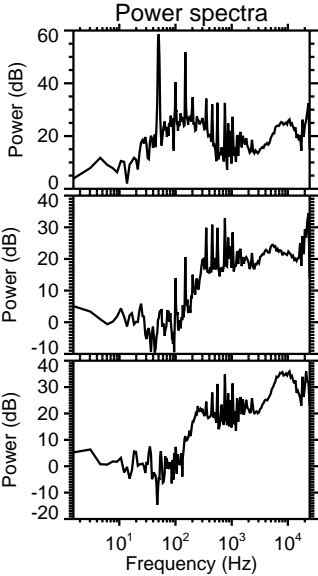
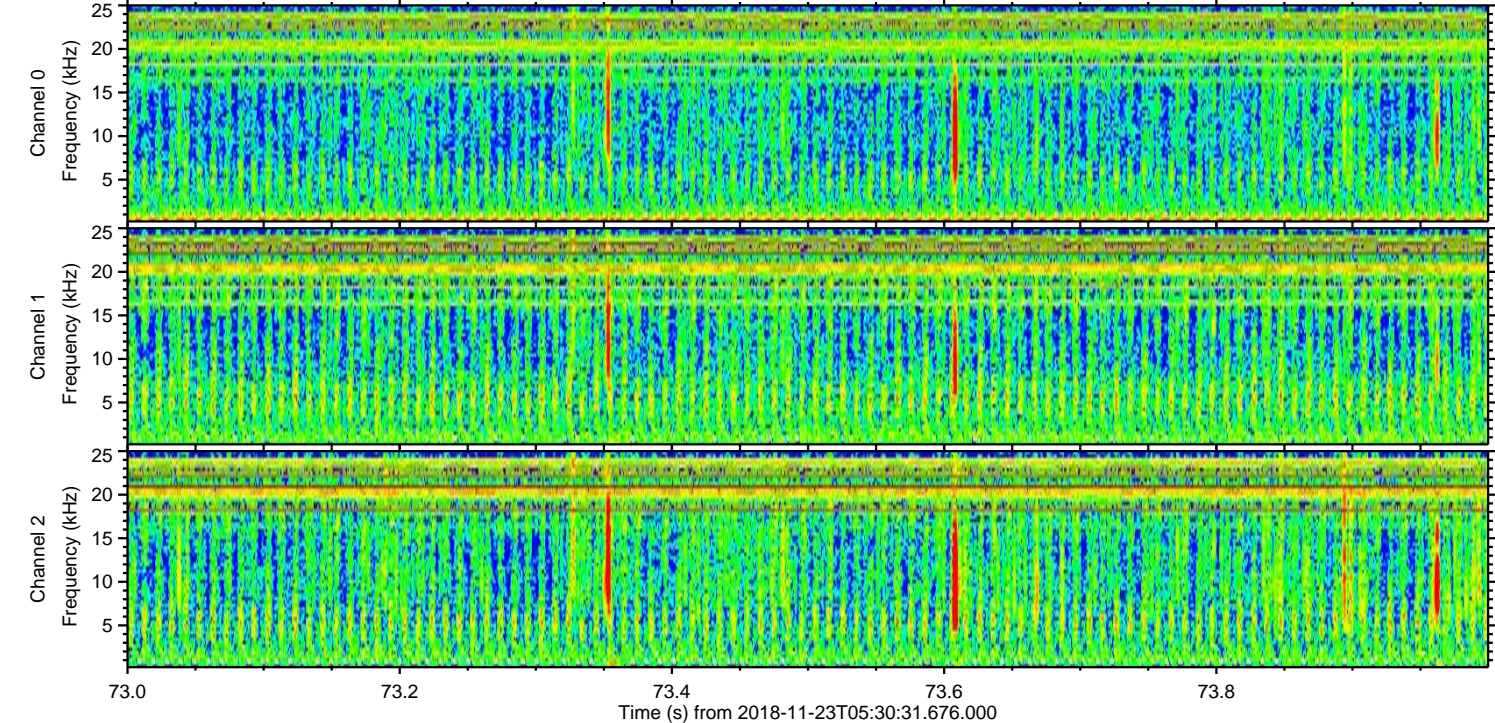
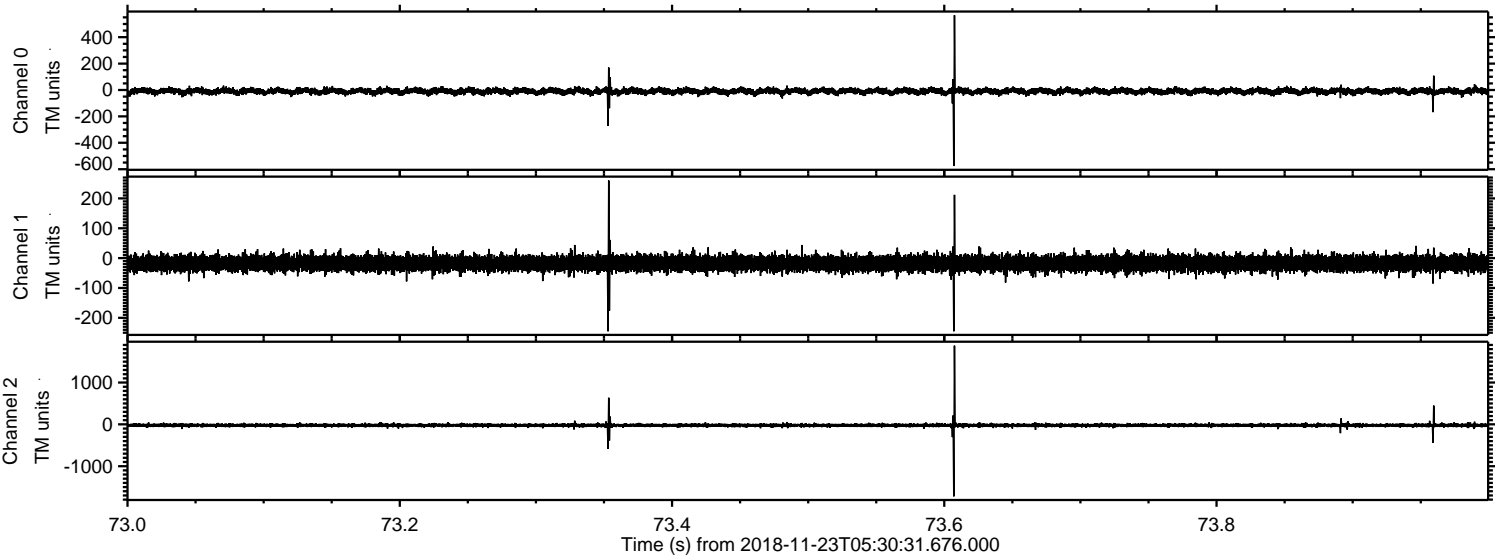
Processed Fri Nov 23 06:39:04 2018 by ELM ver.2012-10-06 from 001__elm20181123_053030__dat00.bin



Processed Fri Nov 23 06:39:05 2018 by ELM ver.2012-10-06 from 001__elm20181123_053030__dat00.bin



Processed Fri Nov 23 06:39:06 2018 by ELM ver.2012-10-06 from 001__elm20181123_053030__dat00.bin



Channel 0
mn: -576
mx: 566
 μ : -9.8
 σ : 13.2

Channel 1
mn: -245
mx: 260
 μ : -17.7
 σ : 13.5

Channel 2
mn: -1723
mx: 1883
 μ : -22.3
 σ : 23.5

Processed Fri Nov 23 06:39:07 2018 by ELM ver.2012-10-06 from 001__elm20181123_053030__dat00.bin

