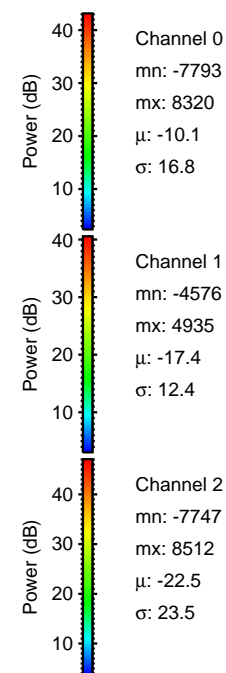
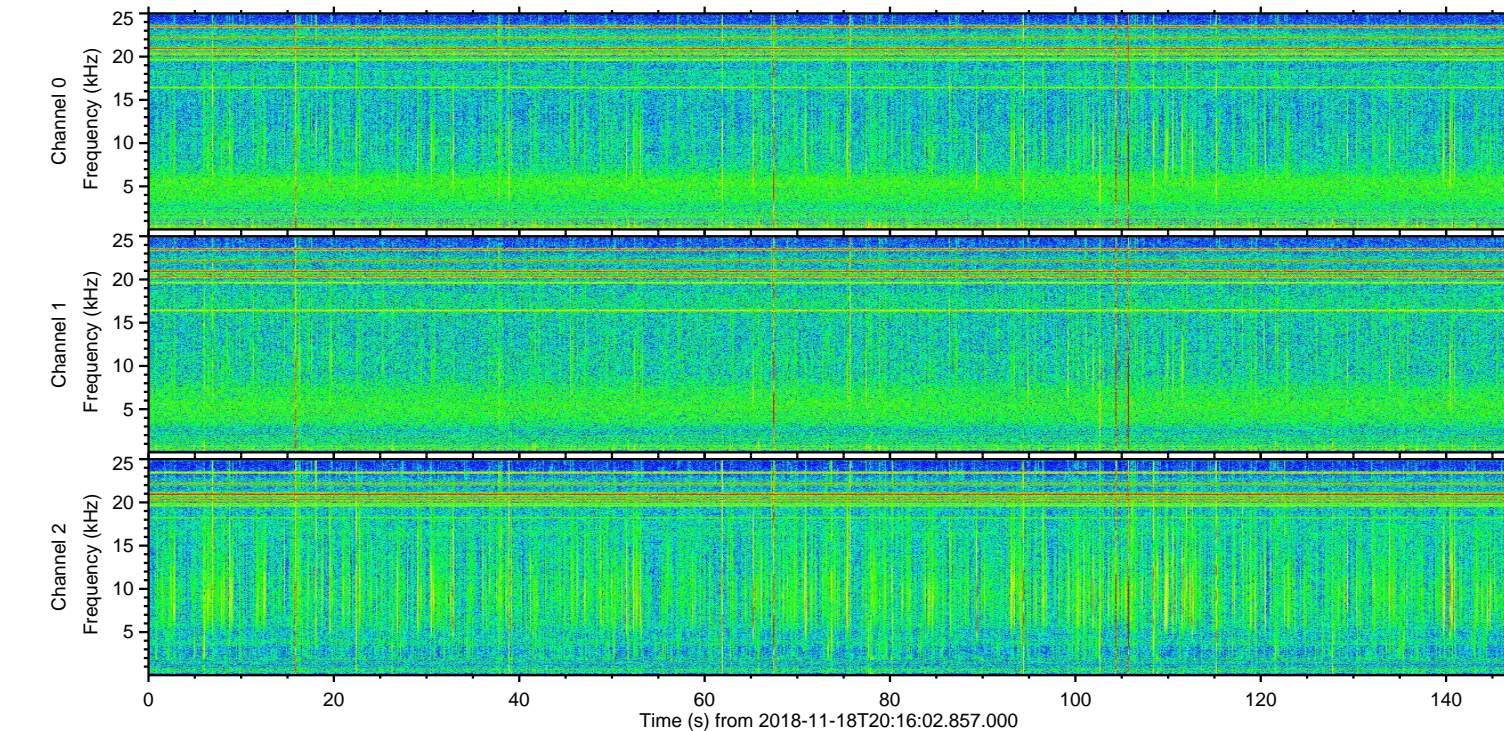
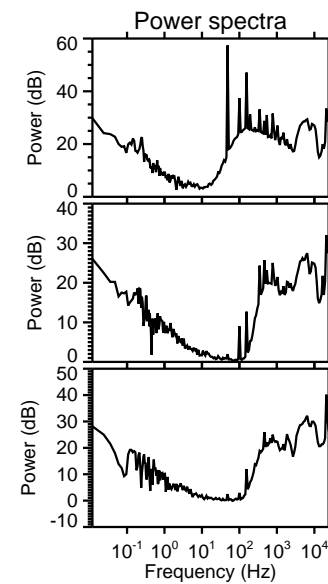
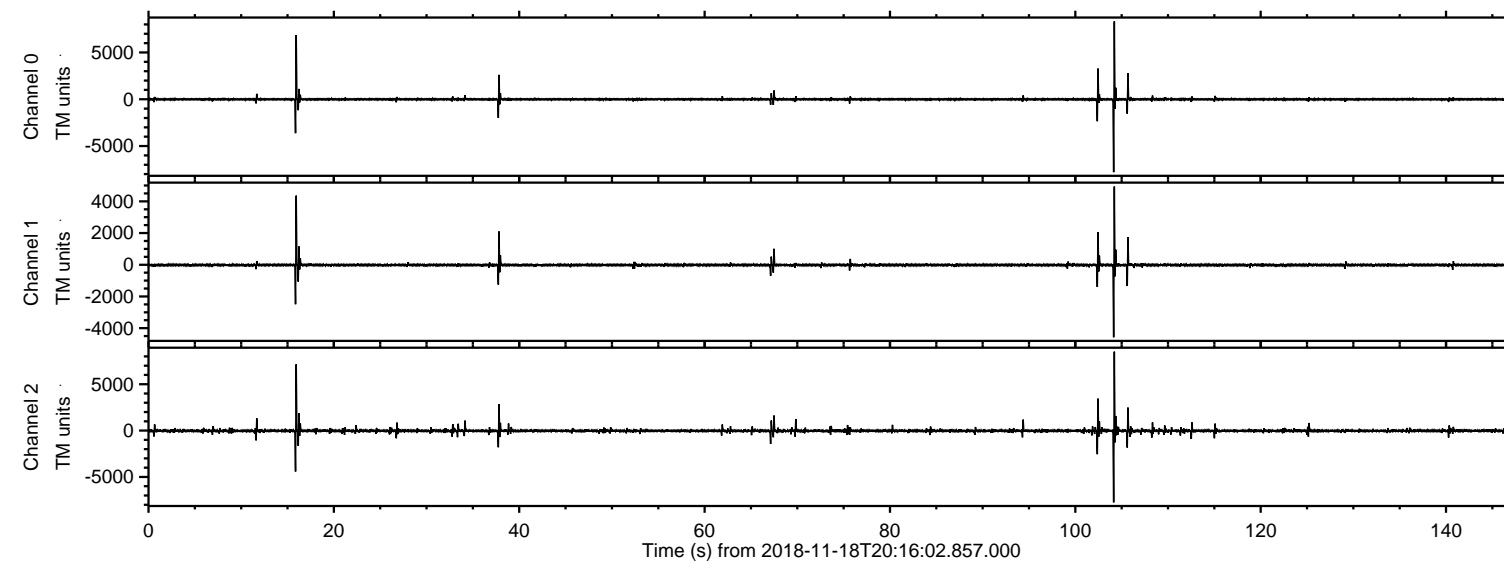


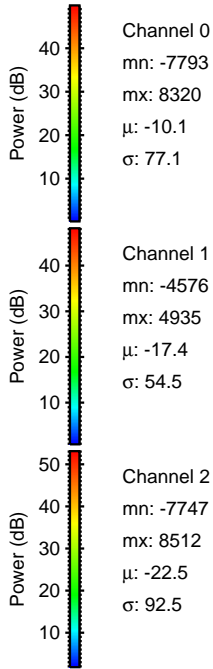
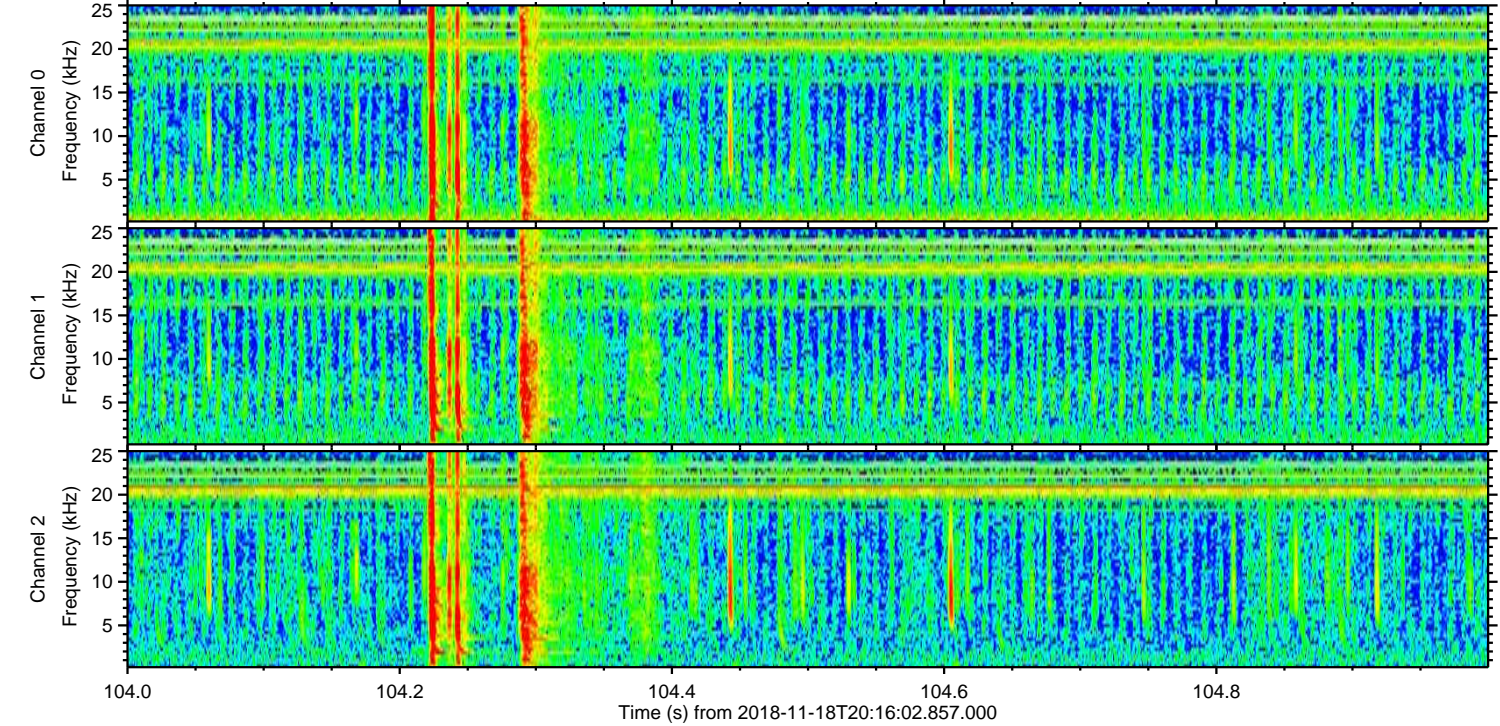
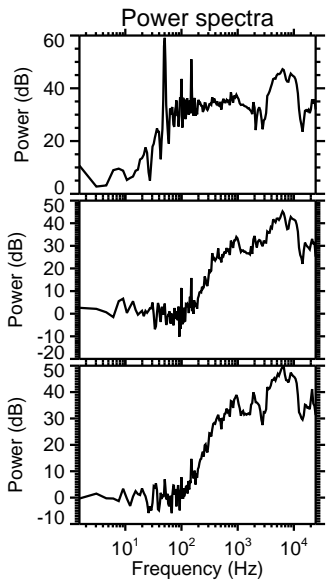
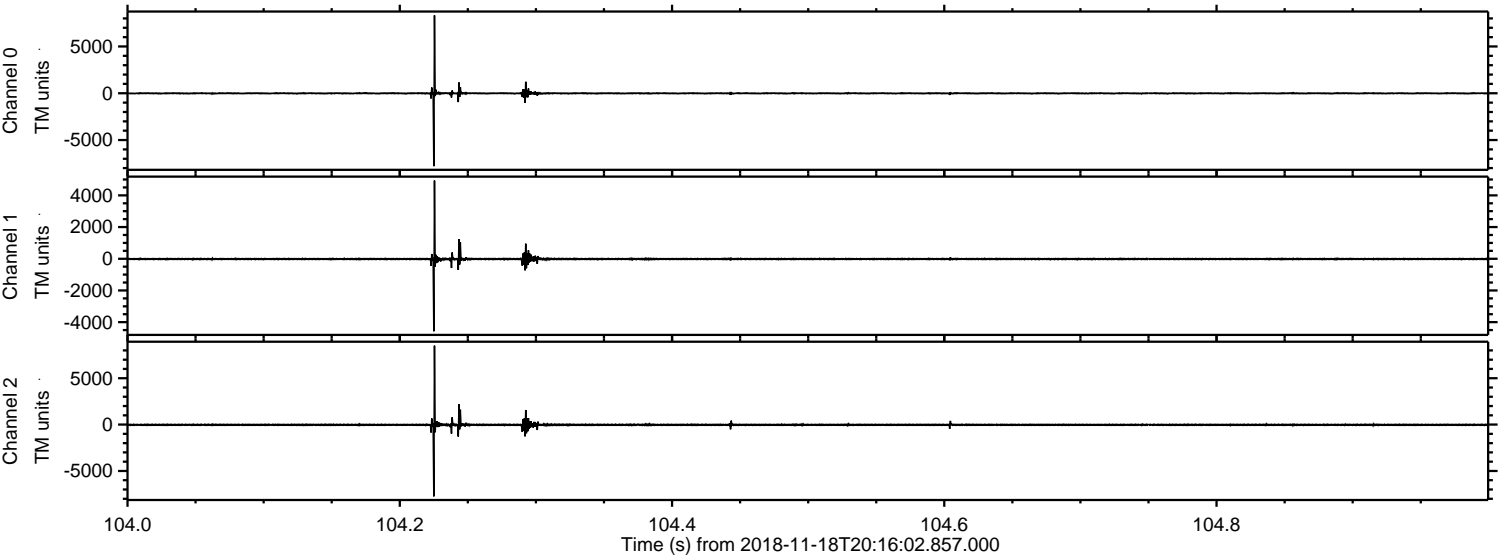
ELMAVAN 3D WAVEFORMS (Measured data sampled at 50 kHz) 51000 packets of 144 samples from 2018-11-18T20:16:02.857.000.

Processed Sun Nov 18 21:23:57 2018 by ELM ver.2012-10-06 from 001__elm20181118_201601__dat00.bin

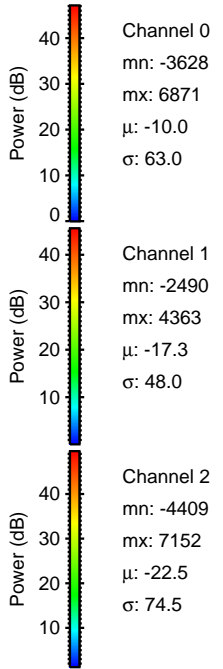
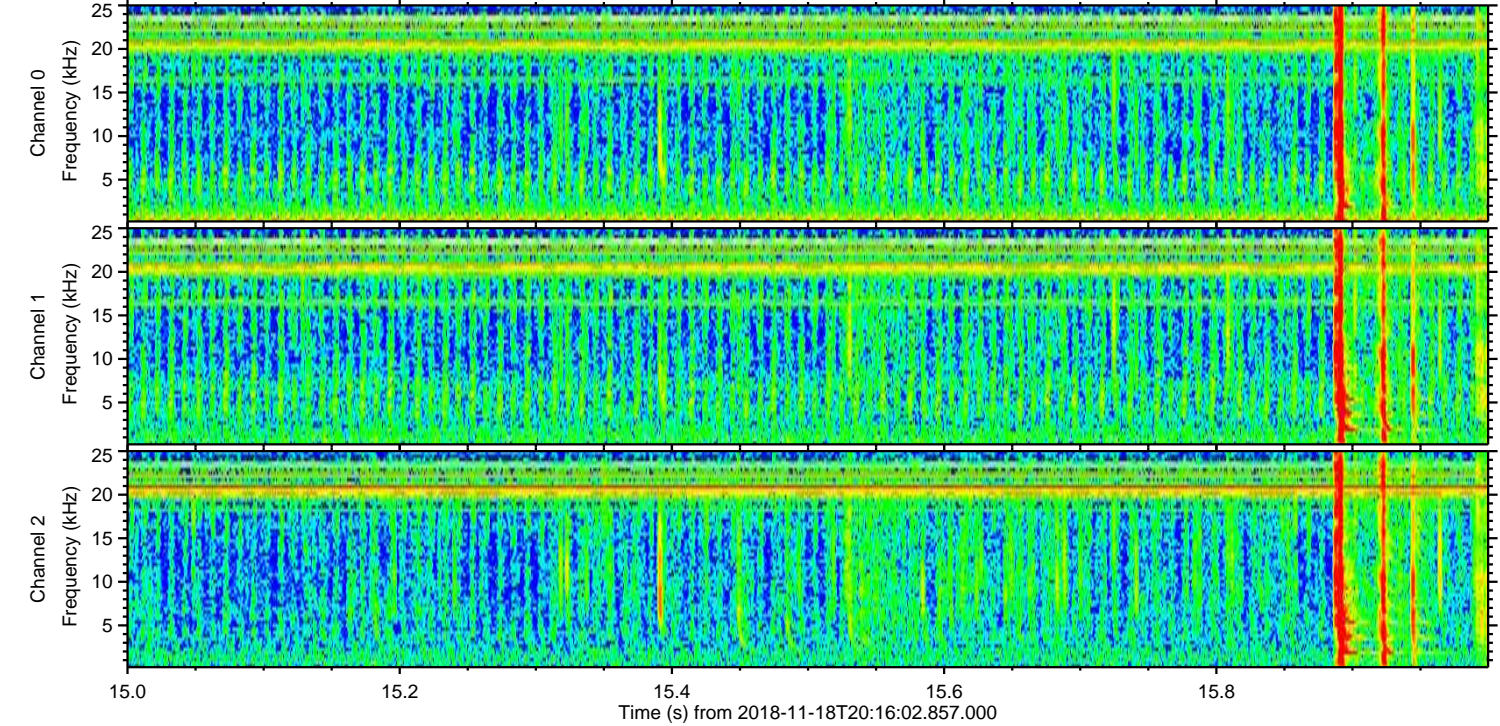
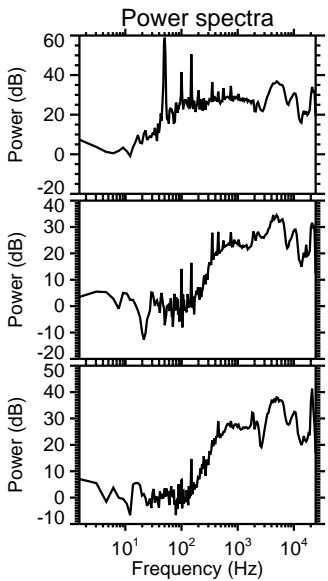
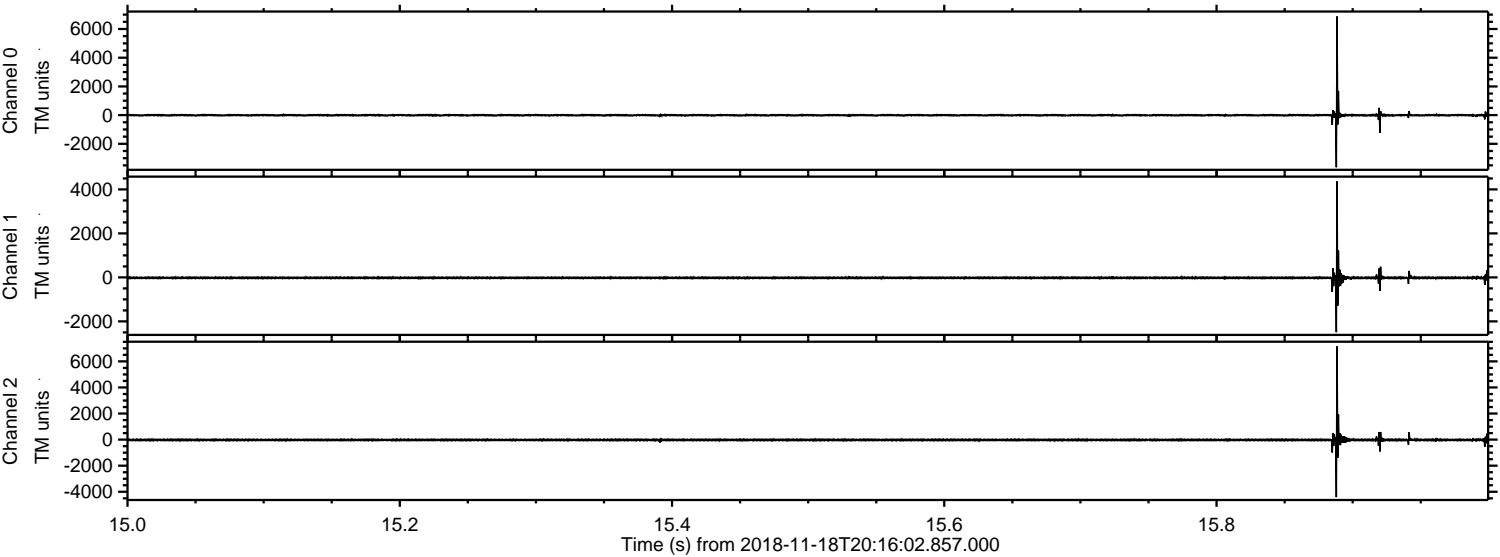


ELMAVAN 3D WAVEFORMS (Measured data sampled at 50 kHz) 51000 packets of 144 samples from 2018-11-18T20:16:02.857.000. Part 105/147

Processed Sun Nov 18 21:24:03 2018 by ELM ver.2012-10-06 from 001__elm20181118_201601__dat00.bin

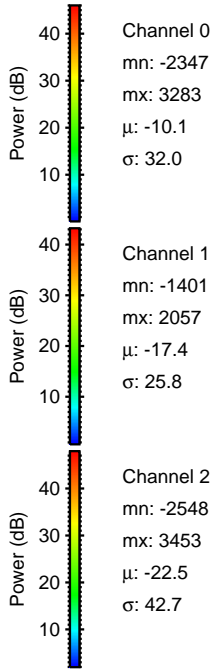
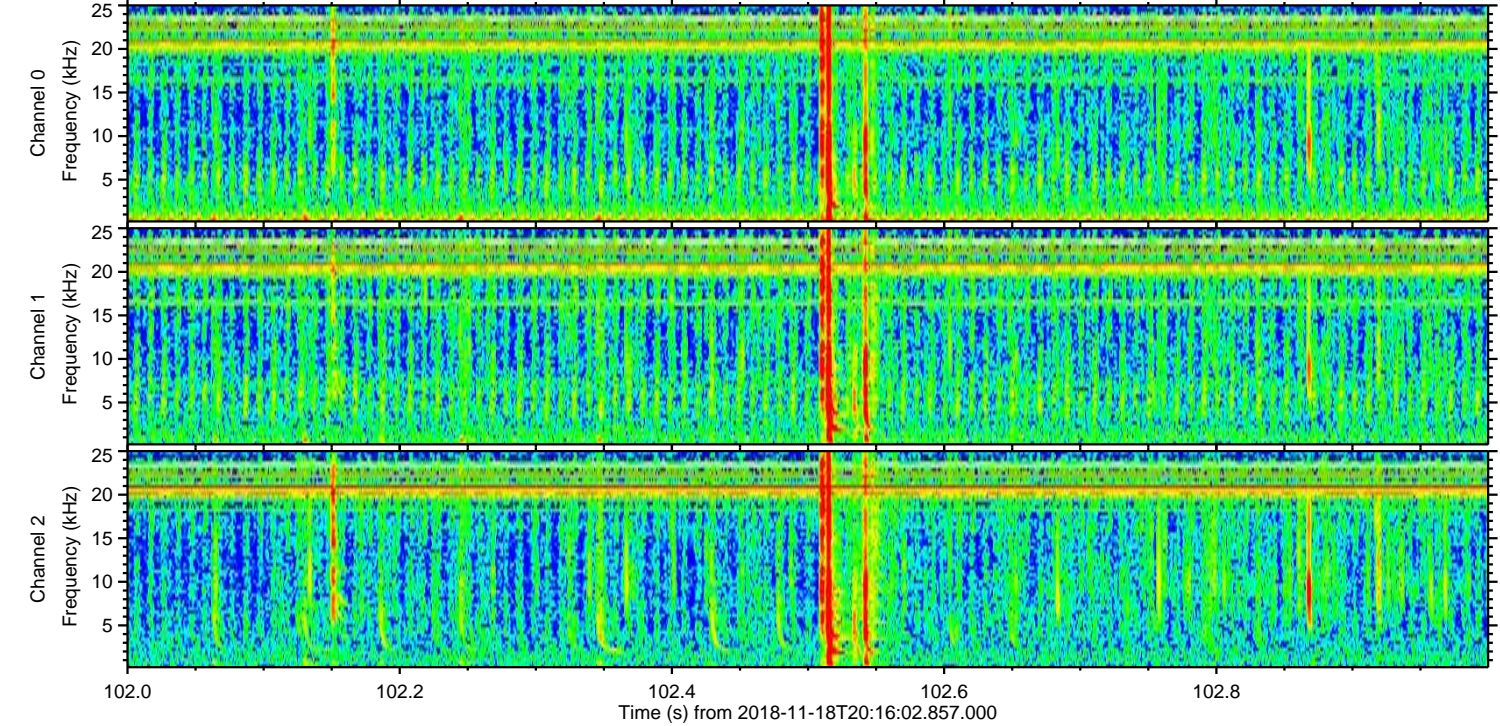
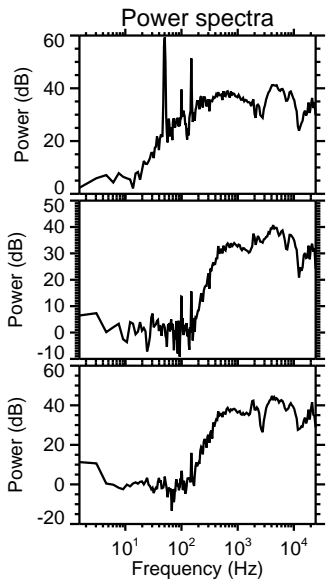
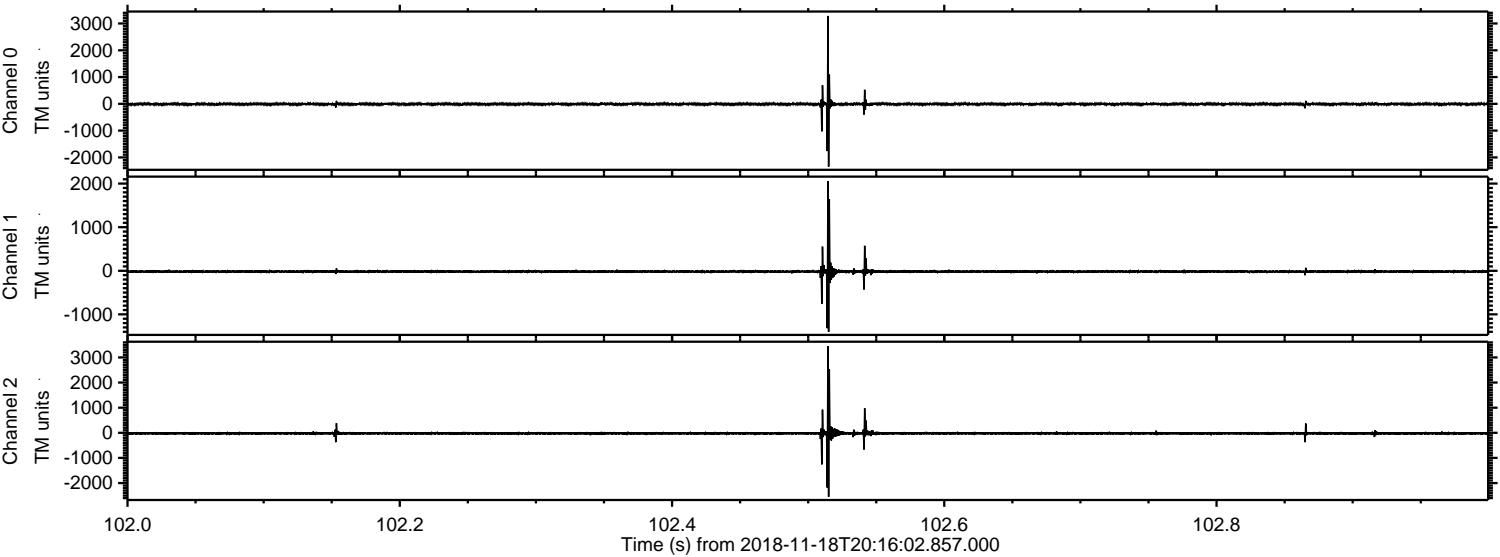


Processed Sun Nov 18 21:24:04 2018 by ELM ver.2012-10-06 from 001__elm20181118_201601__dat00.bin

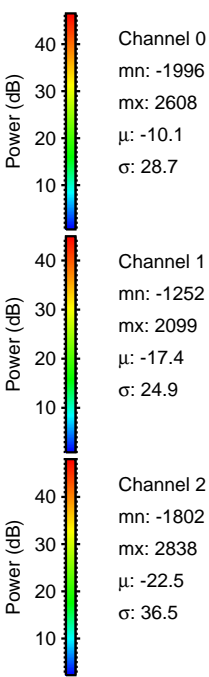
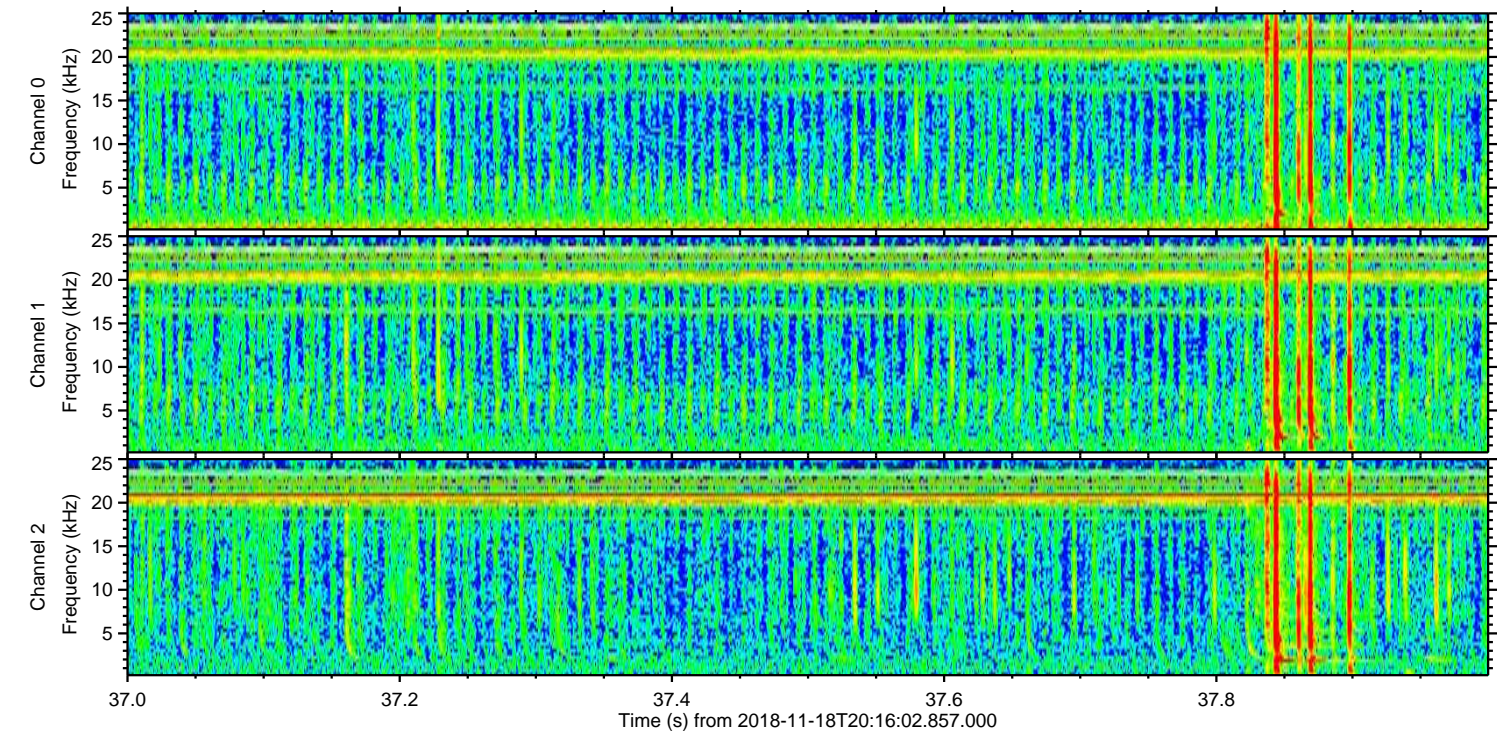
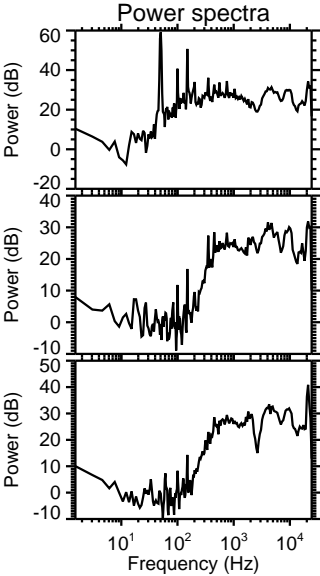
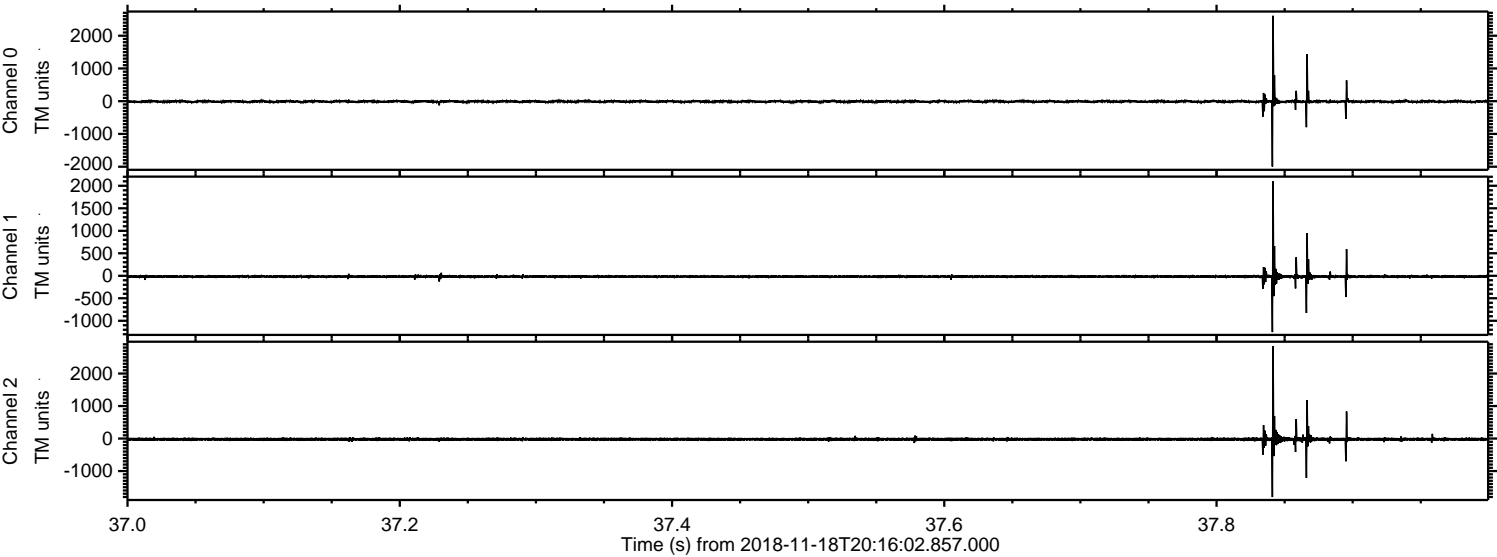


ELMAVAN 3D WAVEFORMS (Measured data sampled at 50 kHz) 51000 packets of 144 samples from 2018-11-18T20:16:02.857.000. Part 103/147

Processed Sun Nov 18 21:24:05 2018 by ELM ver.2012-10-06 from 001__elm20181118_201601__dat00.bin

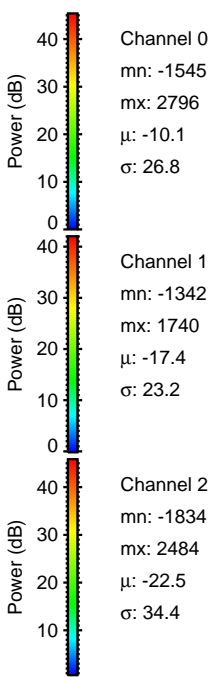
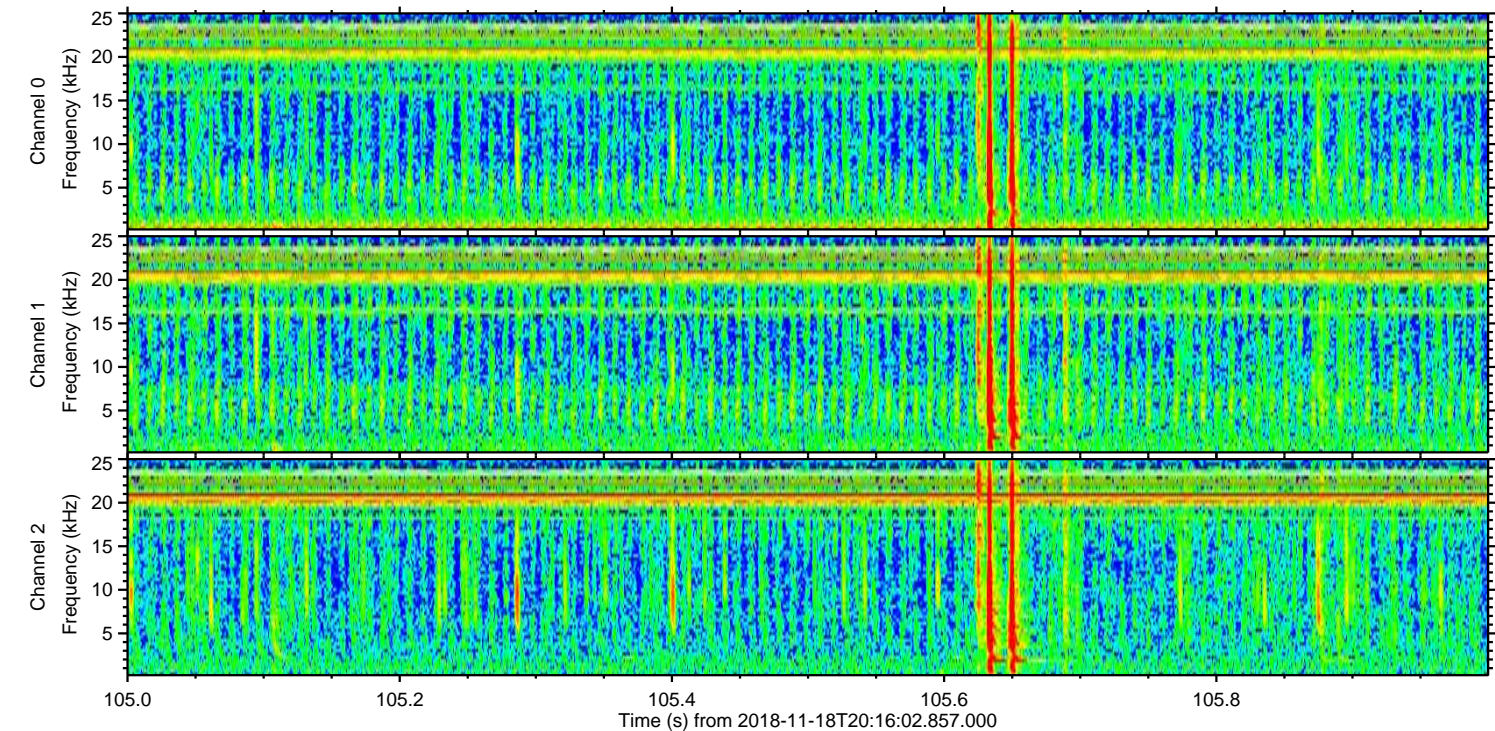
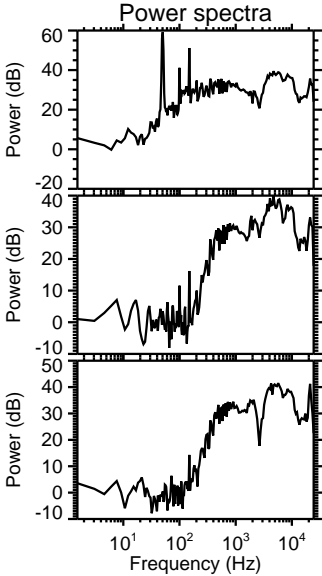
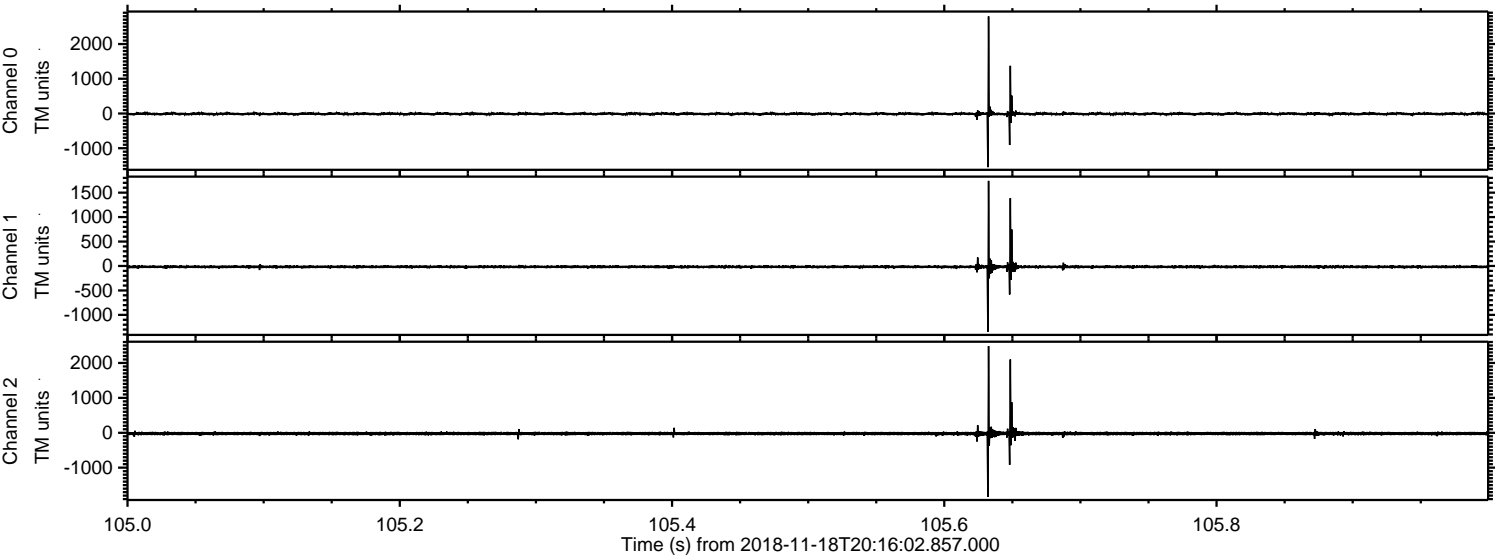


Processed Sun Nov 18 21:24:05 2018 by ELM ver.2012-10-06 from 001_elm20181118_201601__dat00.bin

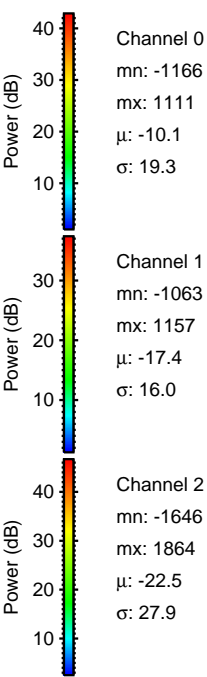
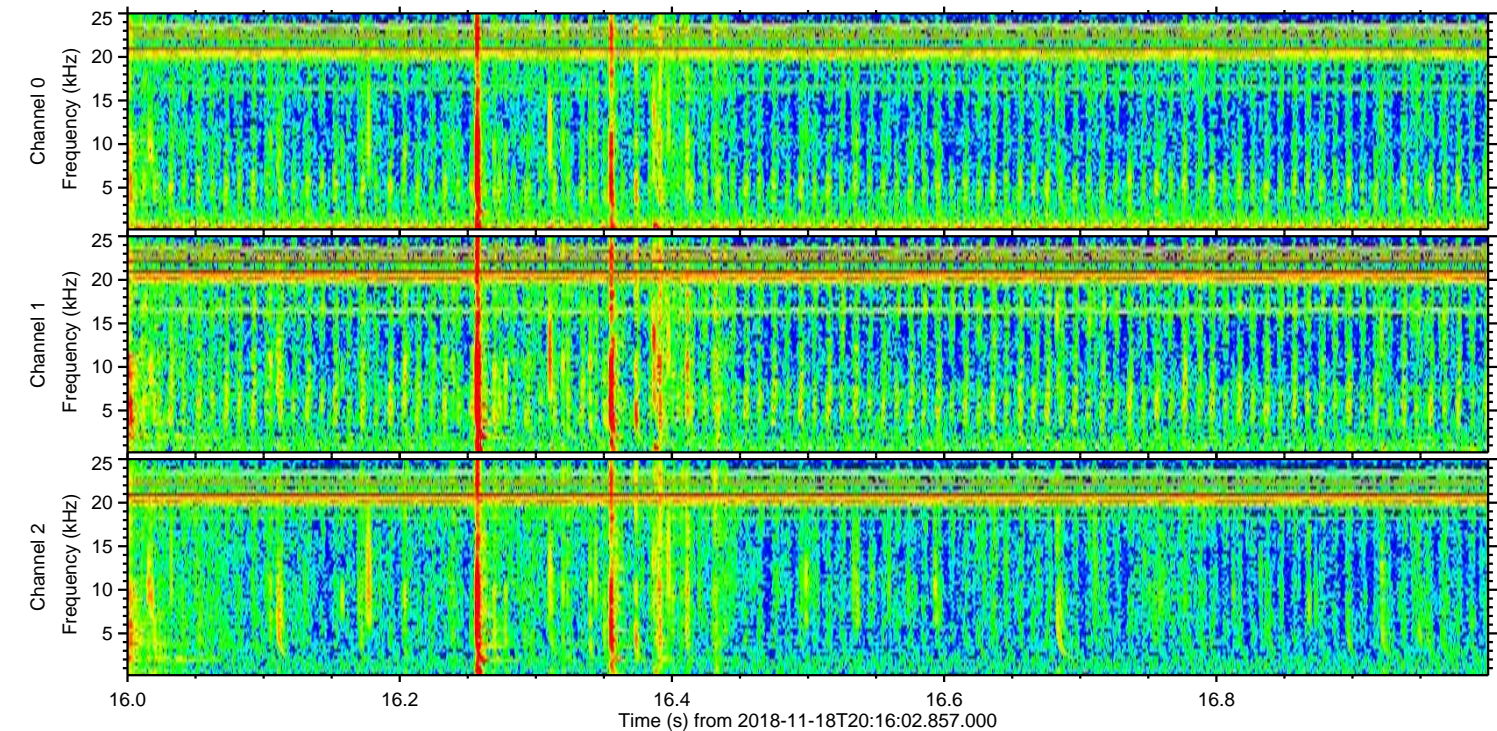
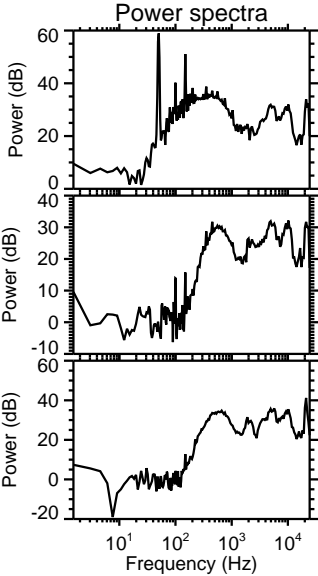
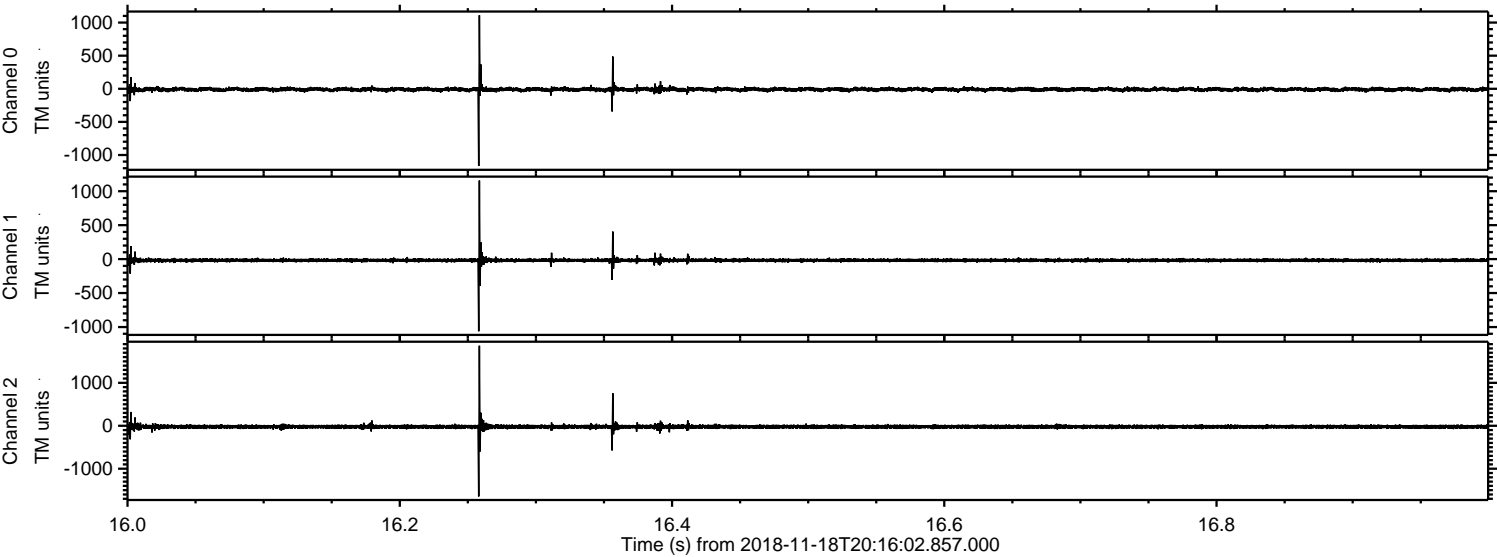


ELMAVAN 3D WAVEFORMS (Measured data sampled at 50 kHz) 51000 packets of 144 samples from 2018-11-18T20:16:02.857.000. Part 106/147

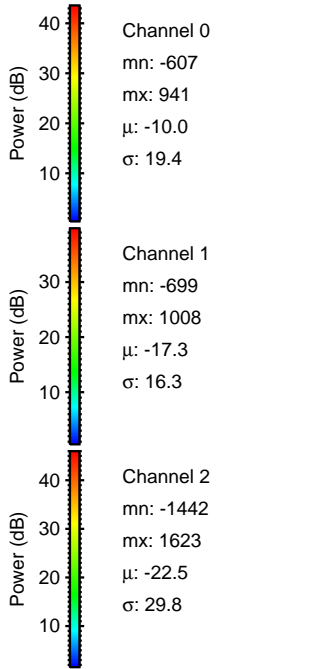
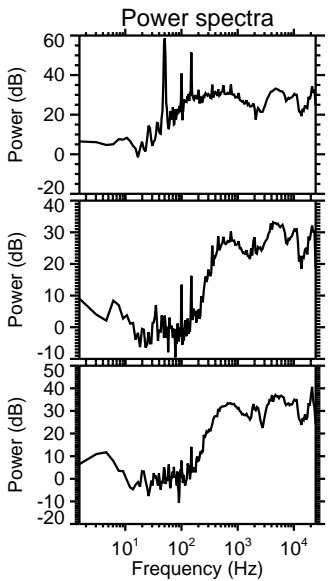
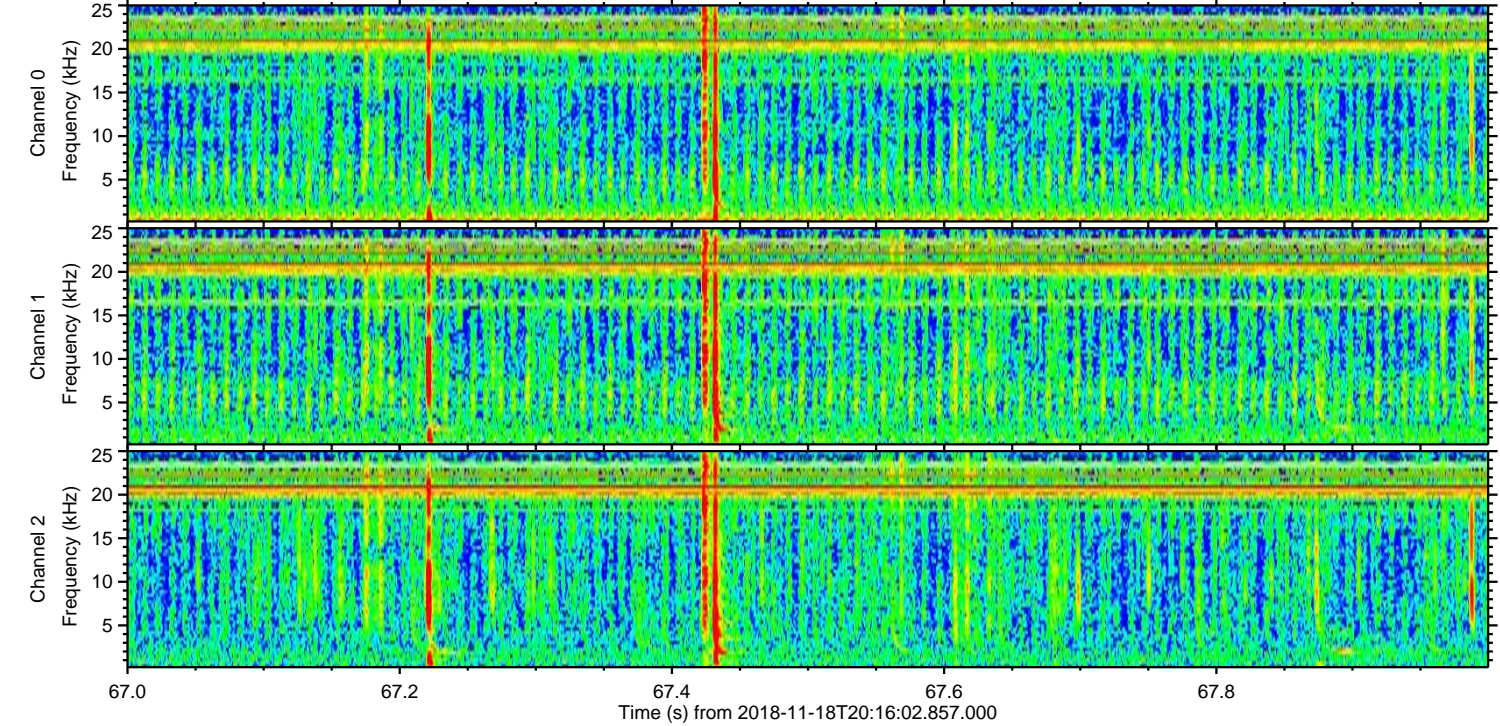
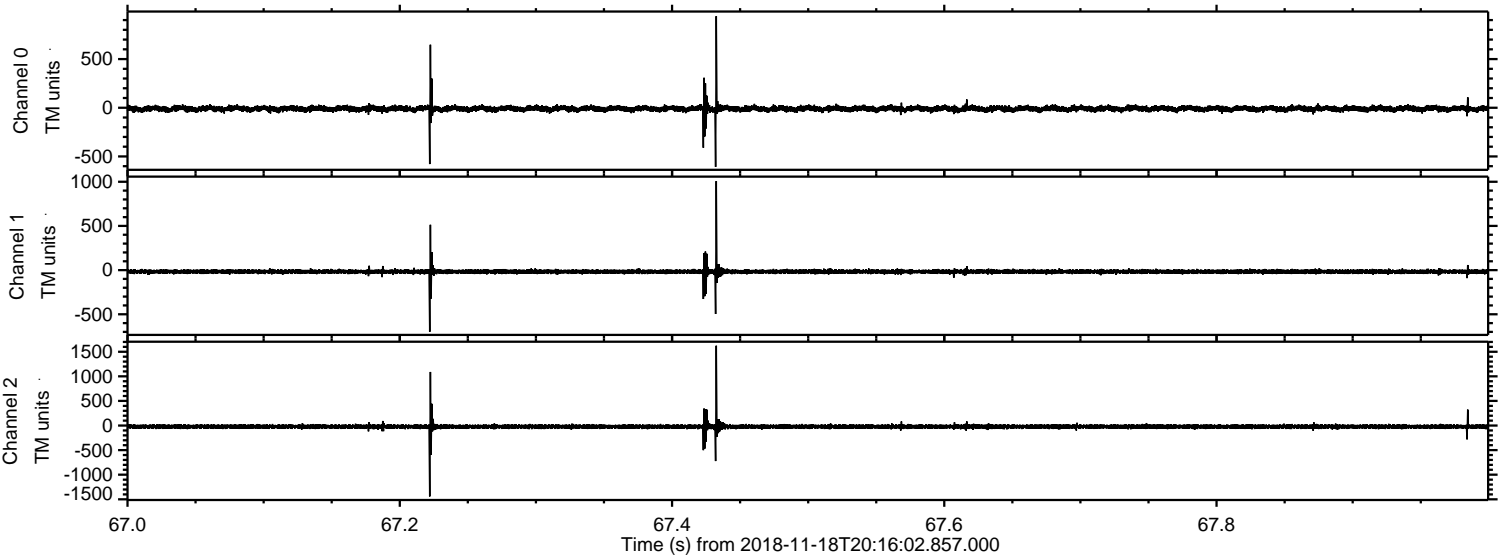
Processed Sun Nov 18 21:24:06 2018 by ELM ver.2012-10-06 from 001__elm20181118_201601__dat00.bin



Processed Sun Nov 18 21:24:07 2018 by ELM ver.2012-10-06 from 001__elm20181118_201601__dat00.bin

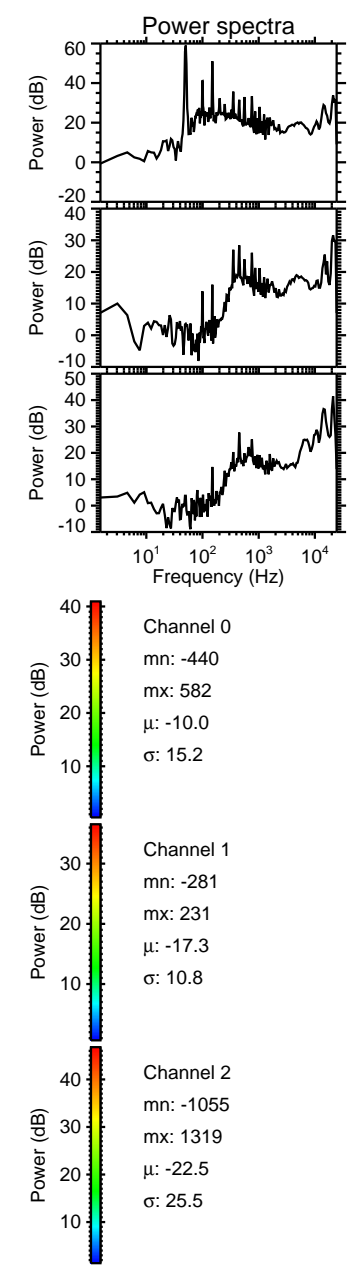
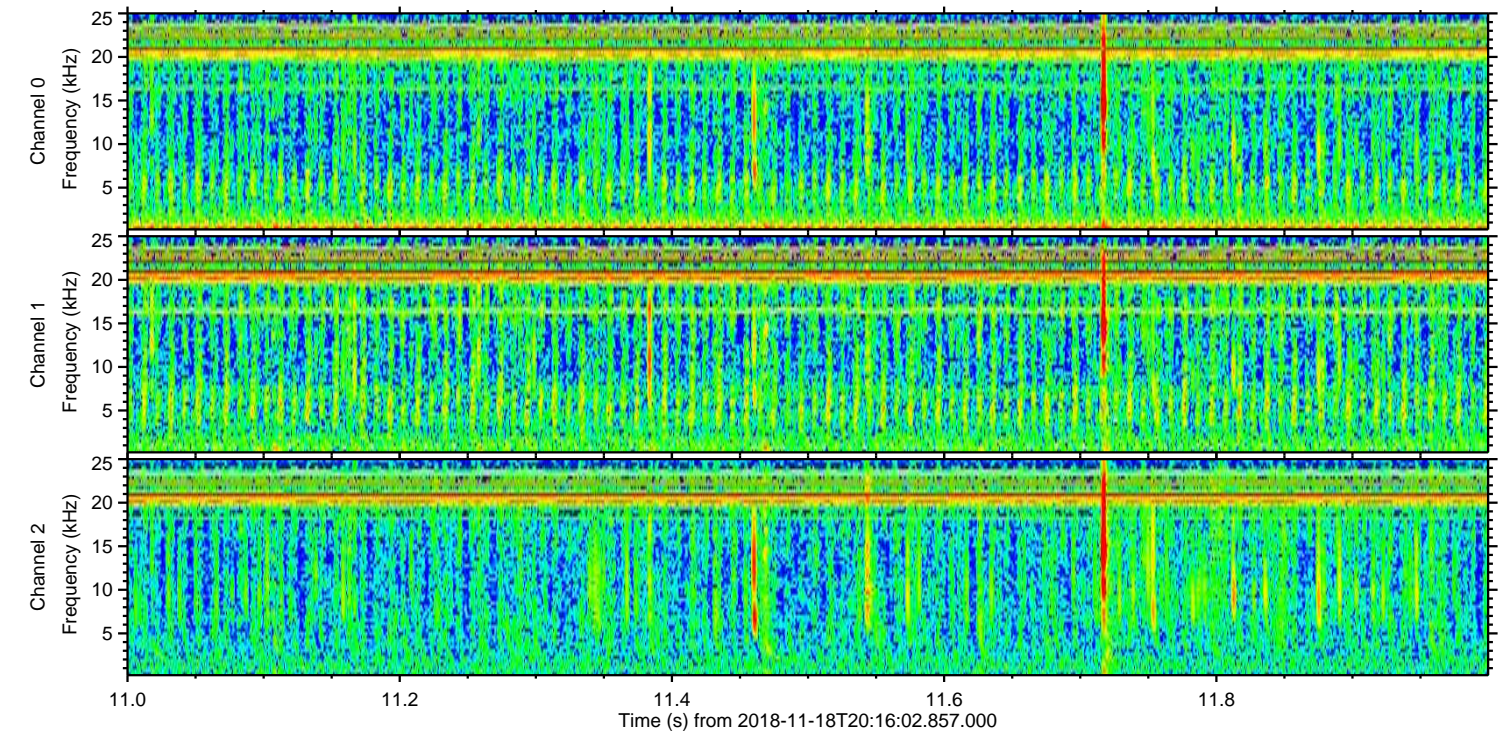
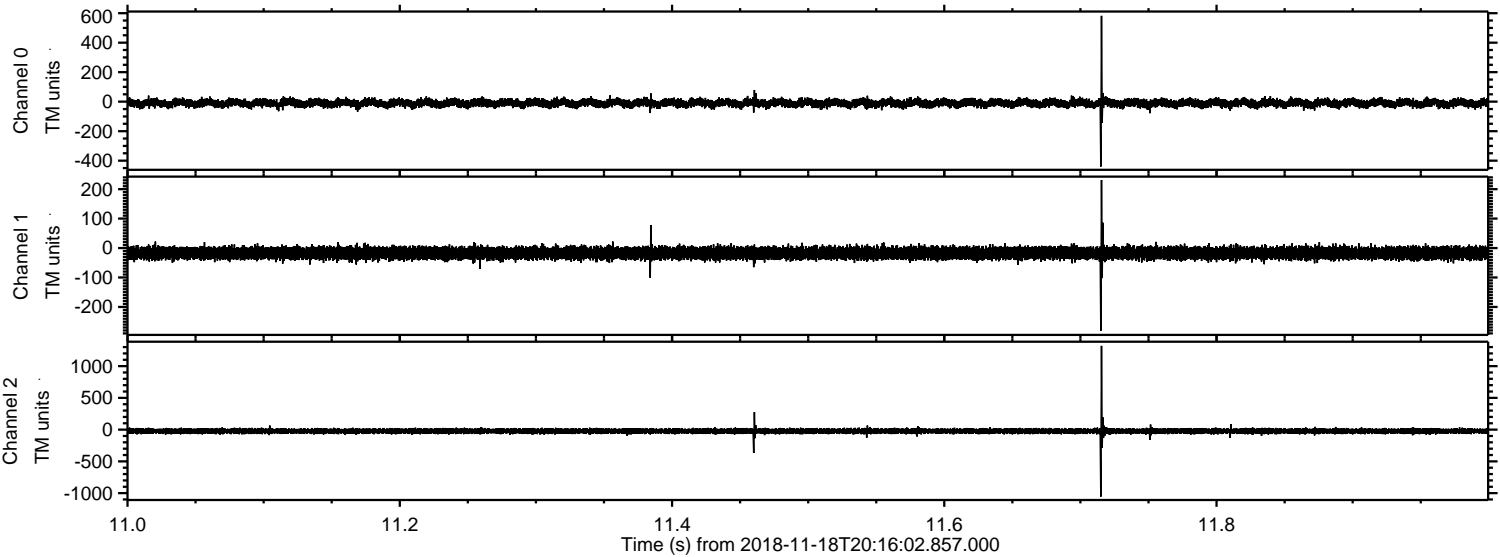


Processed Sun Nov 18 21:24:08 2018 by ELM ver.2012-10-06 from 001__elm20181118_201601__dat00.bin

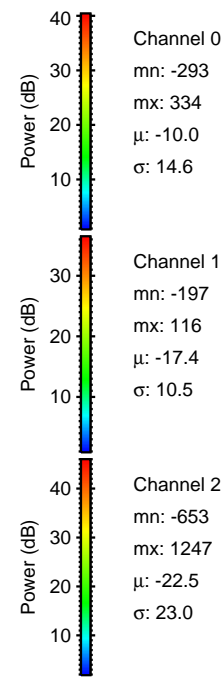
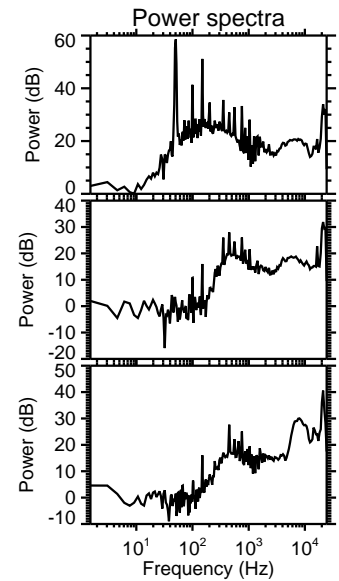
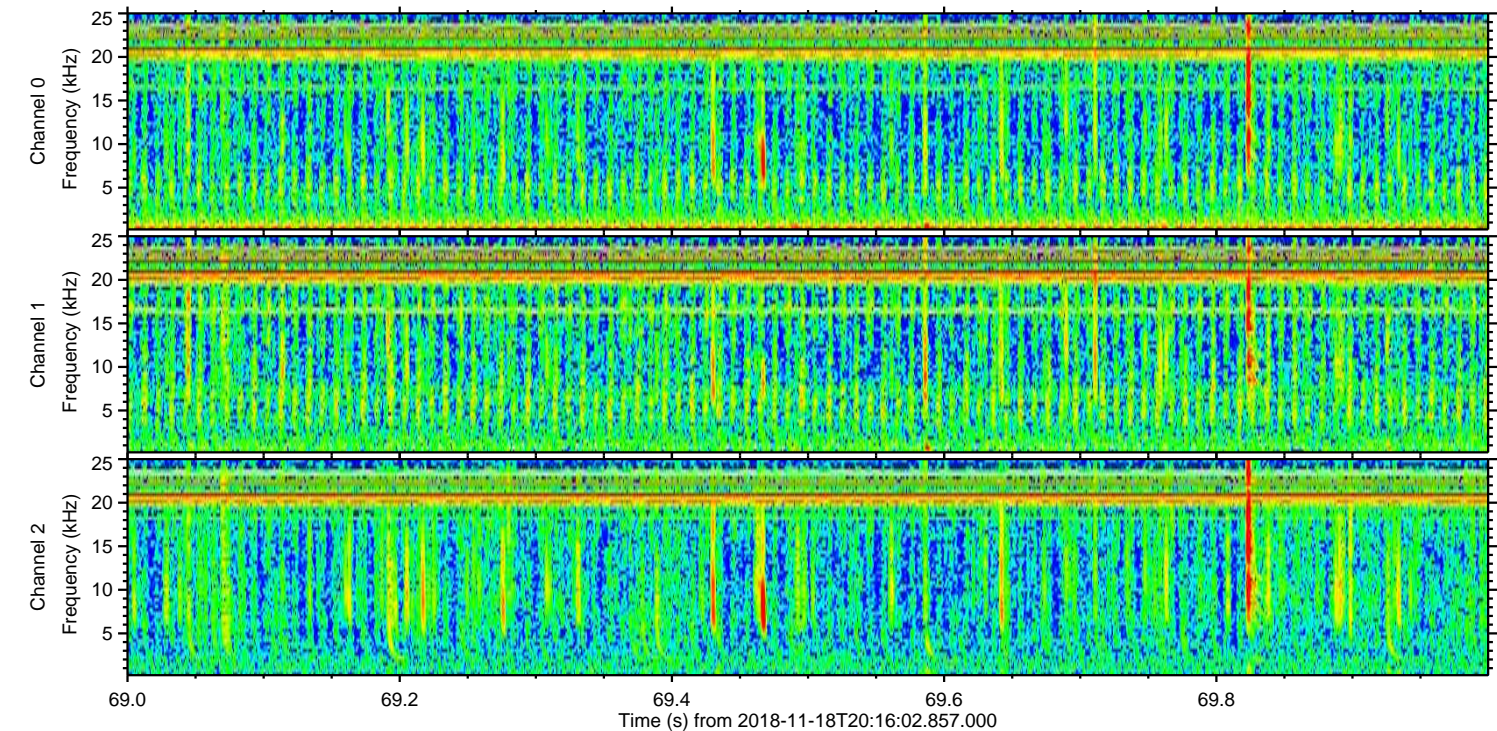
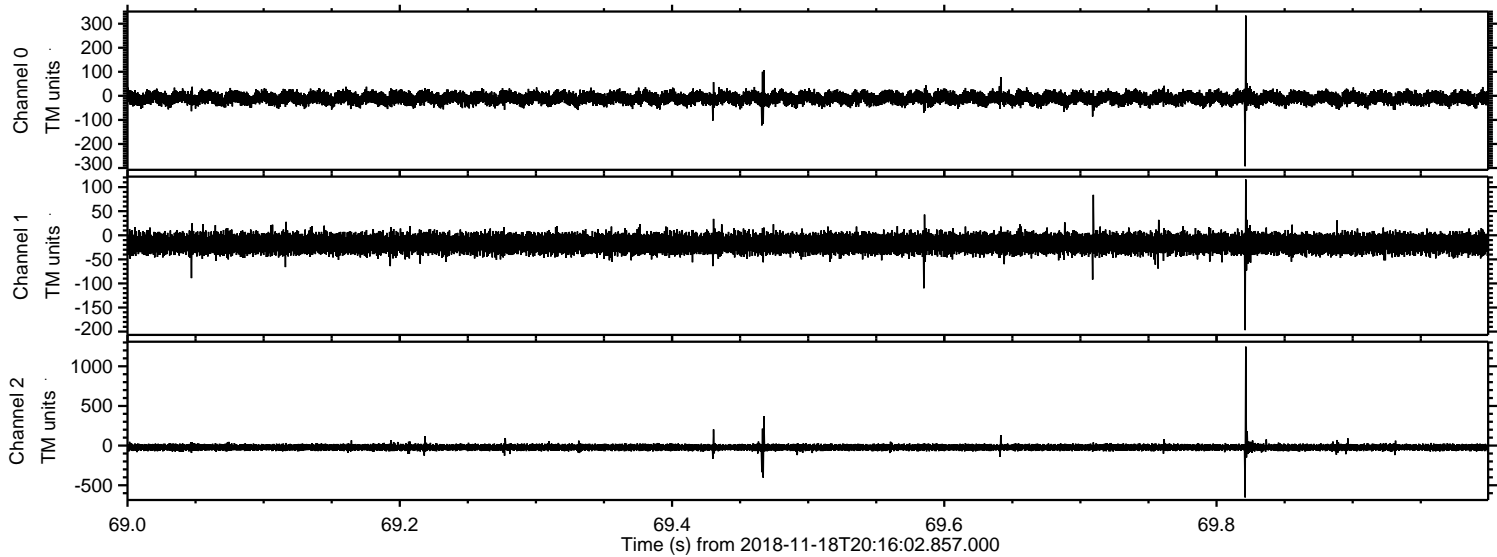


ELMAVAN 3D WAVEFORMS (Measured data sampled at 50 kHz) 51000 packets of 144 samples from 2018-11-18T20:16:02.857.000. Part 12/147

Processed Sun Nov 18 21:24:08 2018 by ELM ver.2012-10-06 from 001__elm20181118_201601__dat00.bin



Processed Sun Nov 18 21:24:09 2018 by ELM ver.2012-10-06 from 001__elm20181118_201601__dat00.bin



Channel 0
mn: -293
mx: 334
 μ : -10.0
 σ : 14.6

Channel 1
mn: -197
mx: 116
 μ : -17.4
 σ : 10.5

Channel 2
mn: -653
mx: 1247
 μ : -22.5
 σ : 23.0

