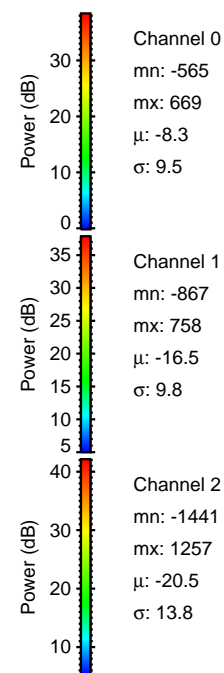
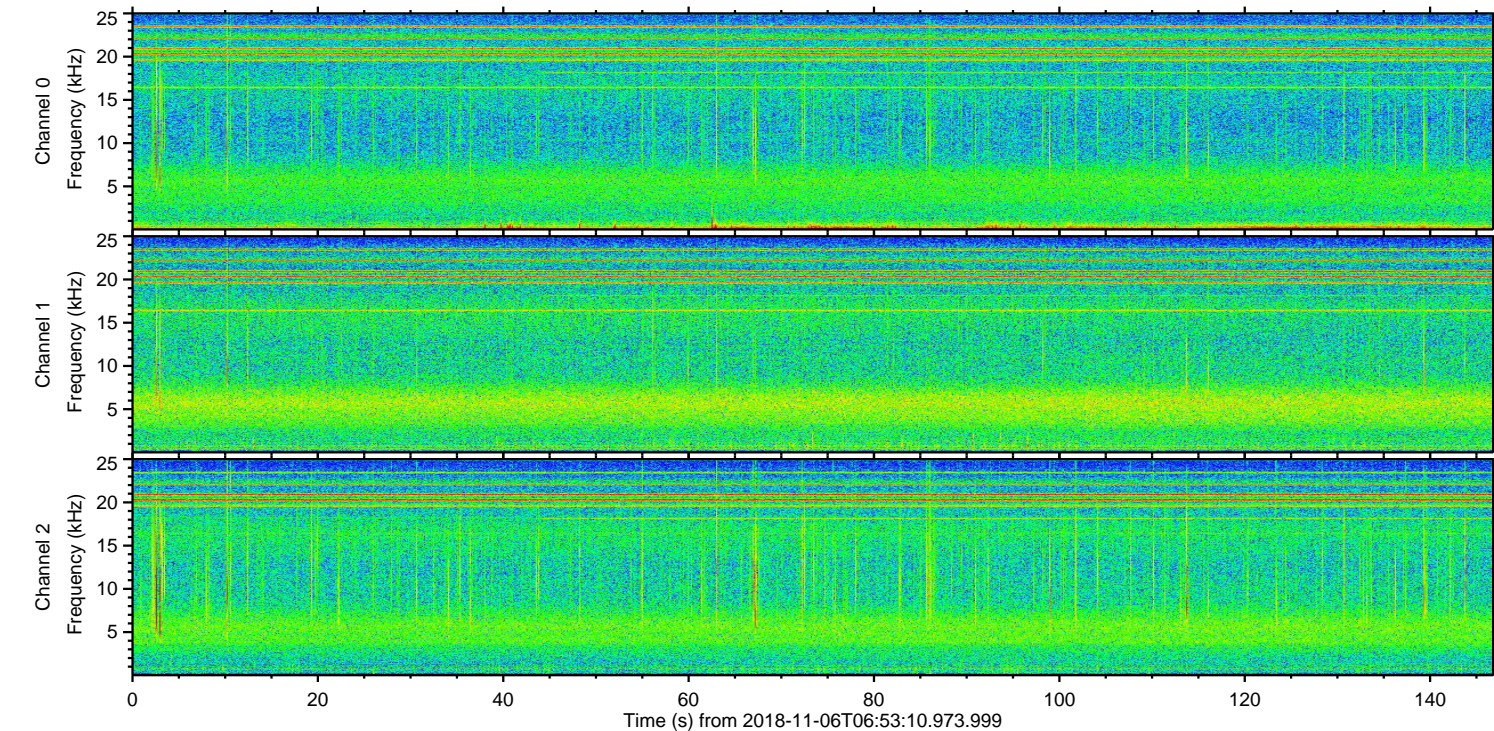
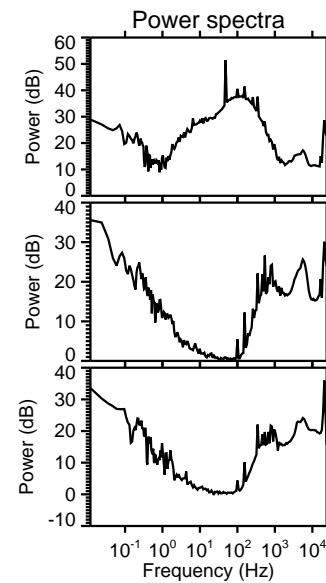
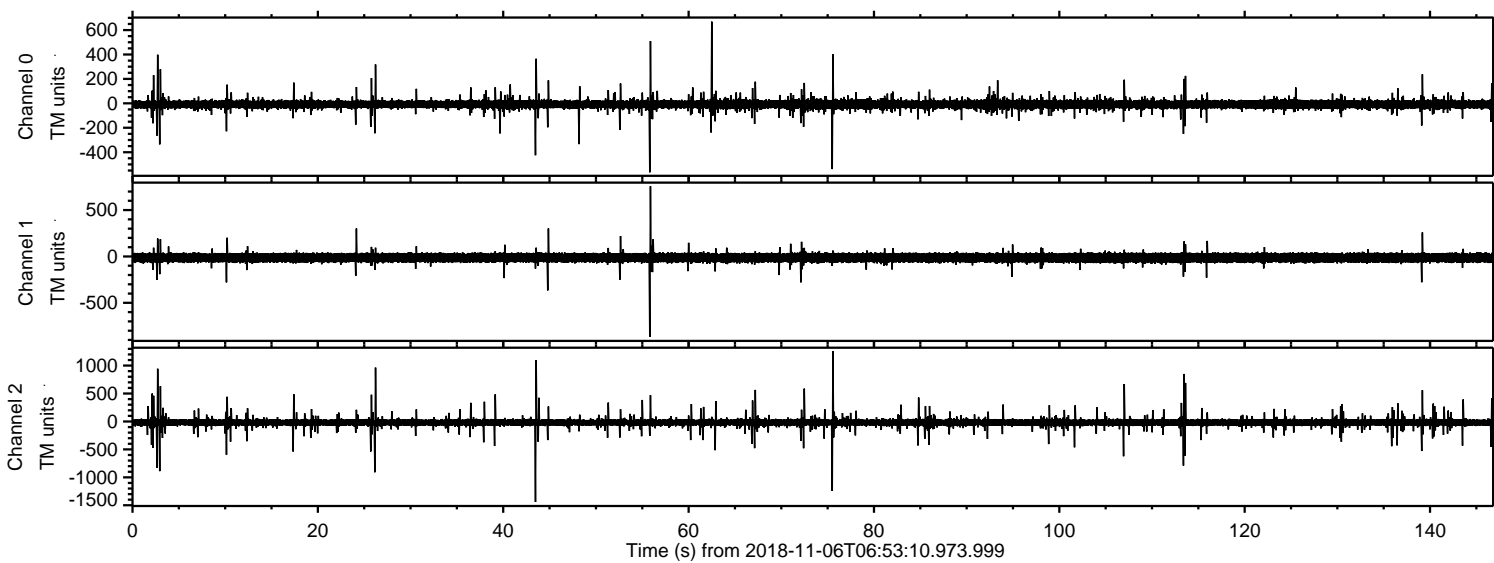


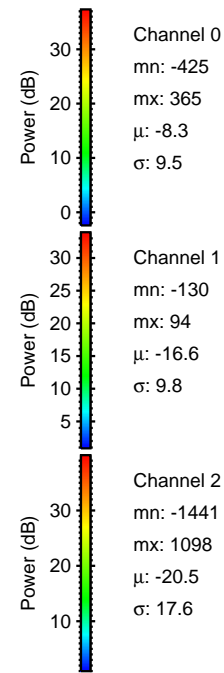
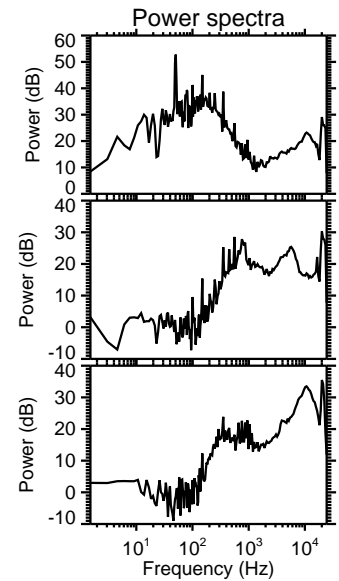
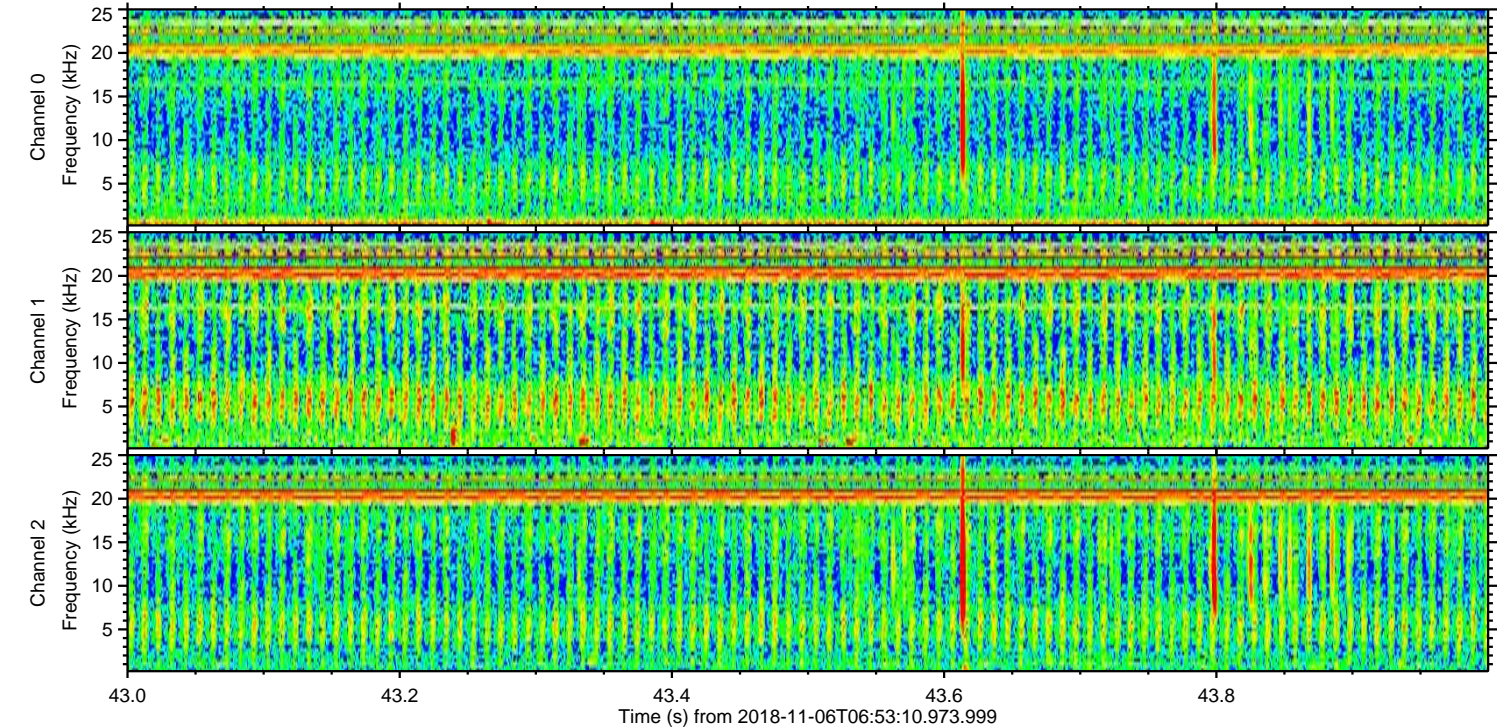
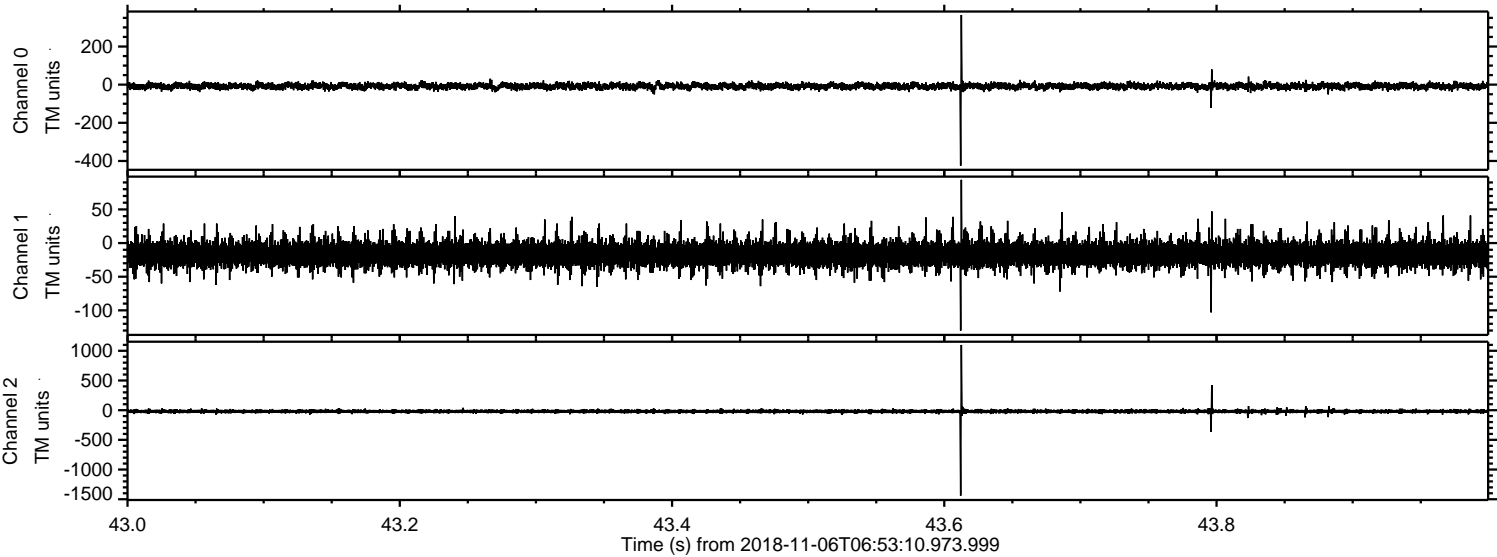
# ELMAVAN 3D WAVEFORMS (Measured data sampled at 50 kHz) 51000 packets of 144 samples from 2018-11-06T06:53:10.973.999.

Processed Tue Nov 6 08:01:30 2018 by ELM ver.2012-10-06 from 001\_\_elm20181106\_065309\_\_dat00.bin



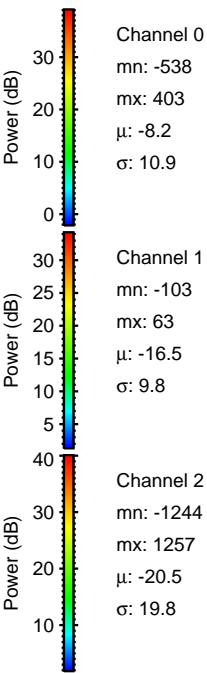
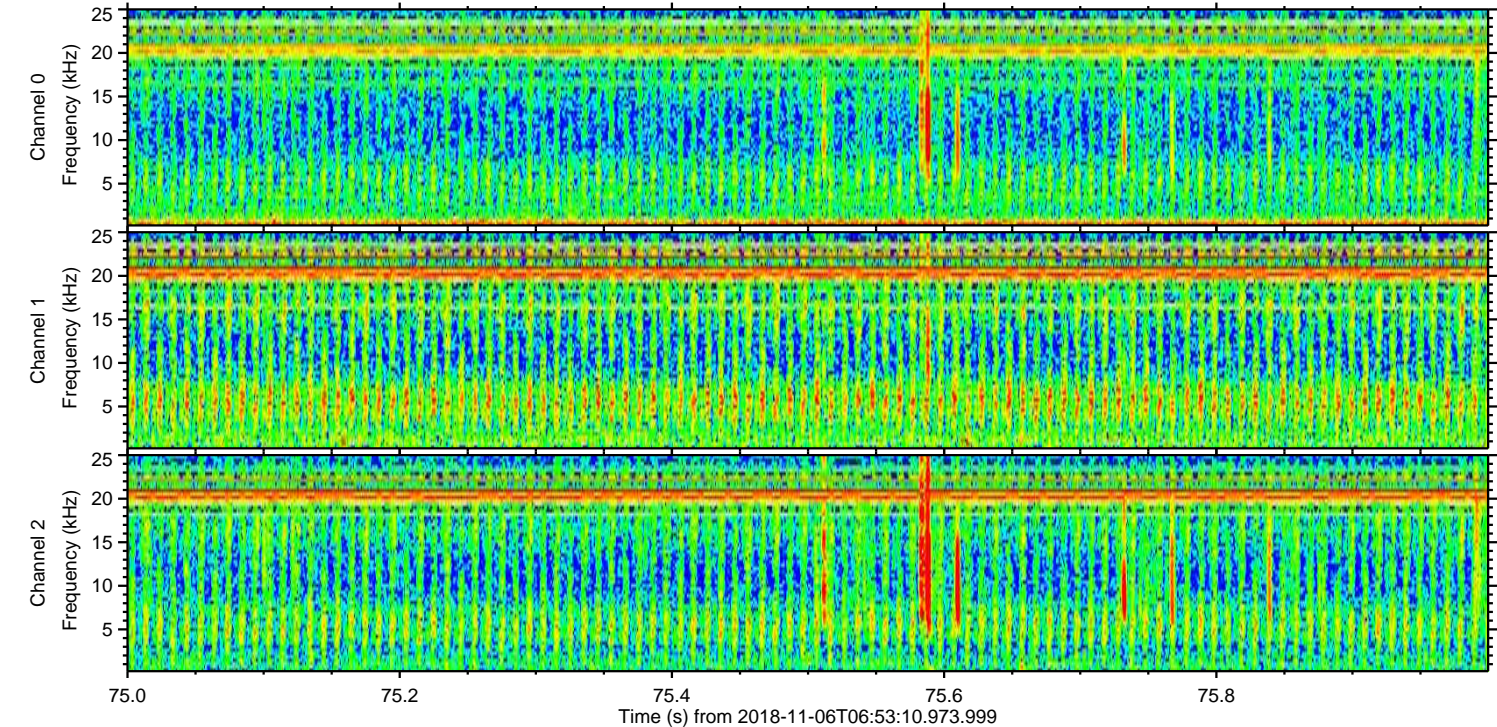
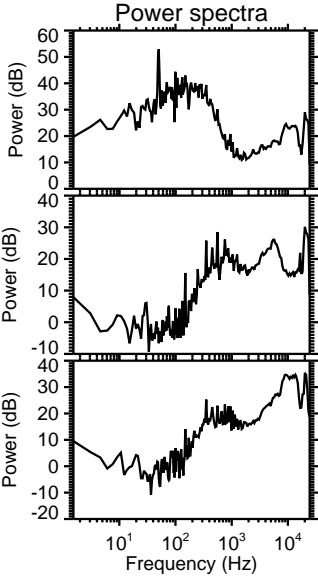
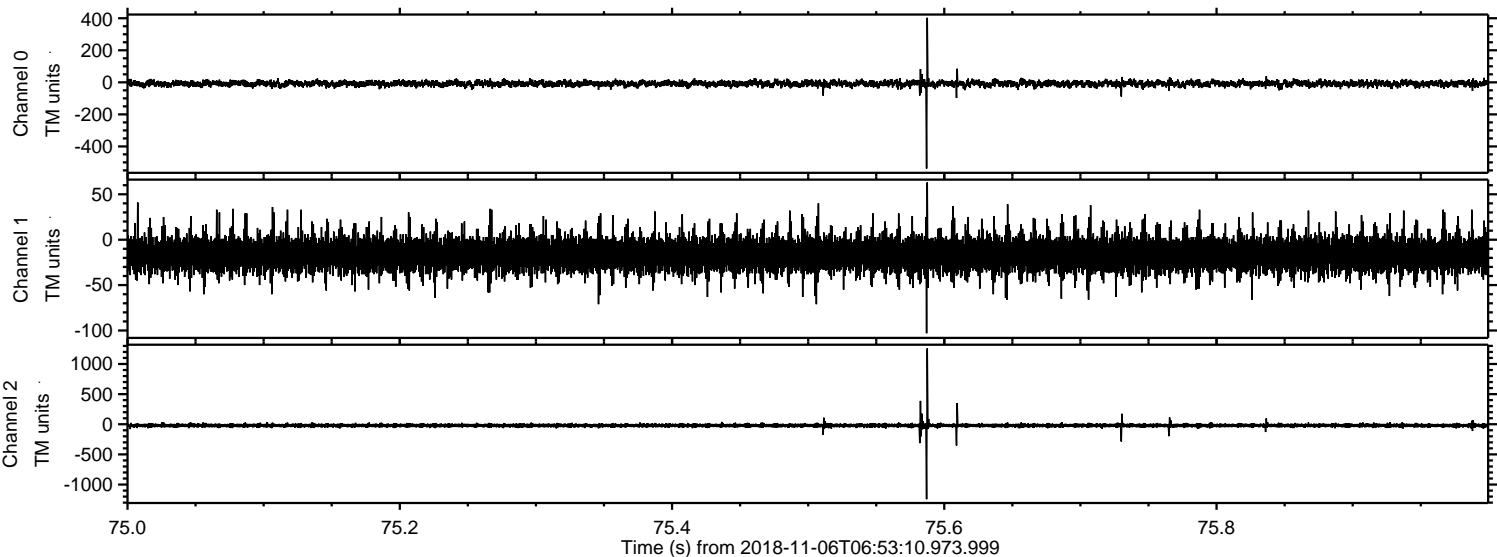


Processed Tue Nov 6 08:01:38 2018 by ELM ver.2012-10-06 from 001\_\_elm20181106\_065309\_\_dat00.bin



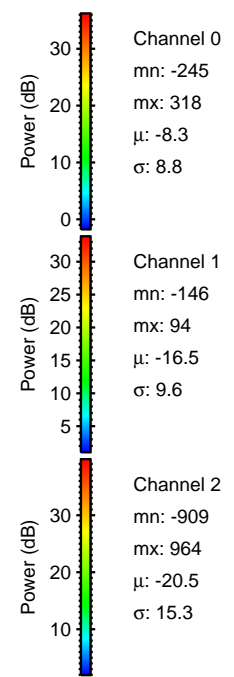
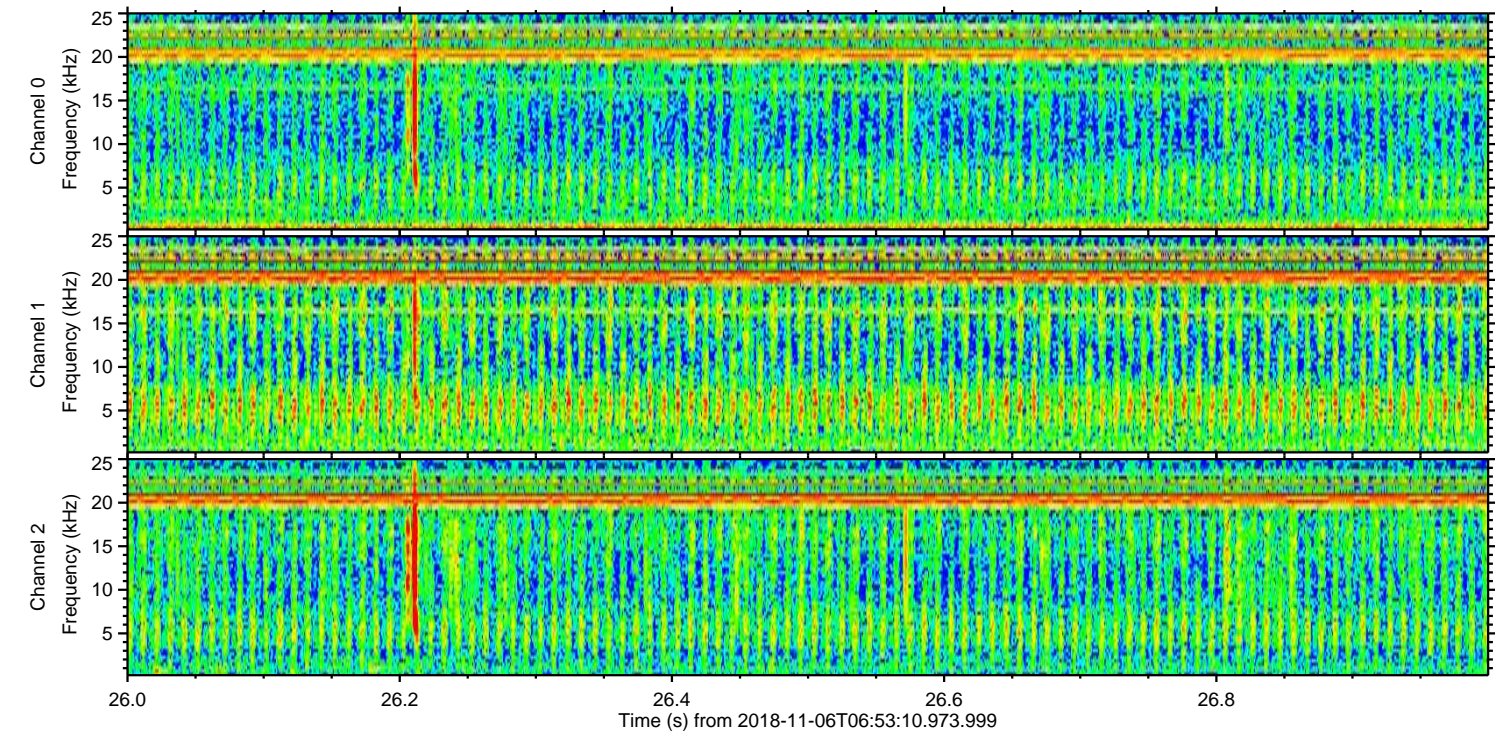
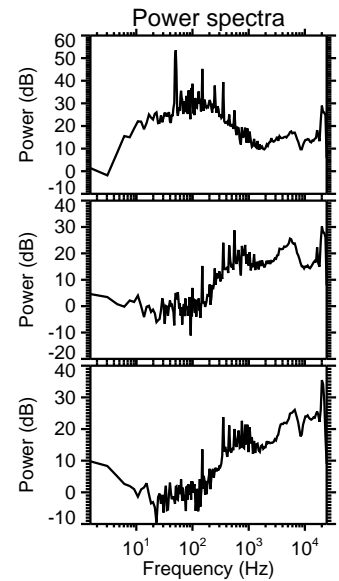
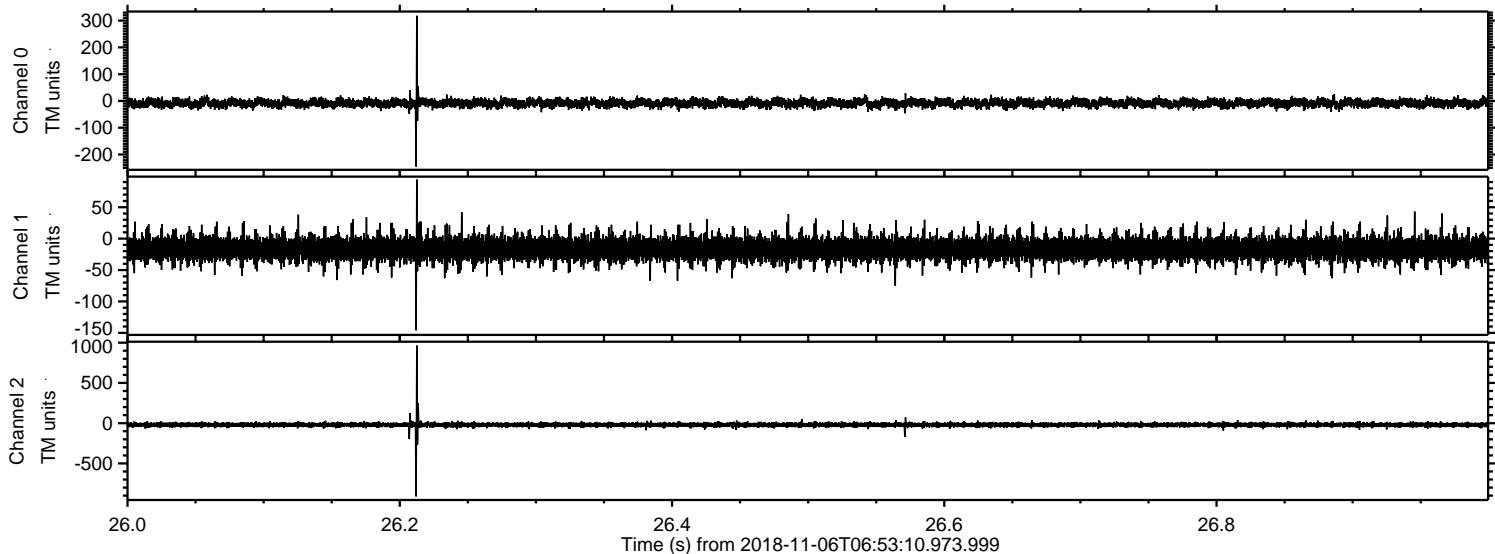


Processed Tue Nov 6 08:01:38 2018 by ELM ver.2012-10-06 from 001\_\_elm20181106\_065309\_\_dat00.bin





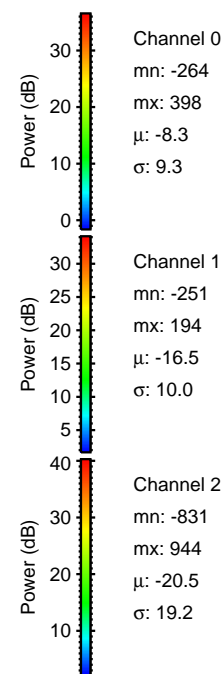
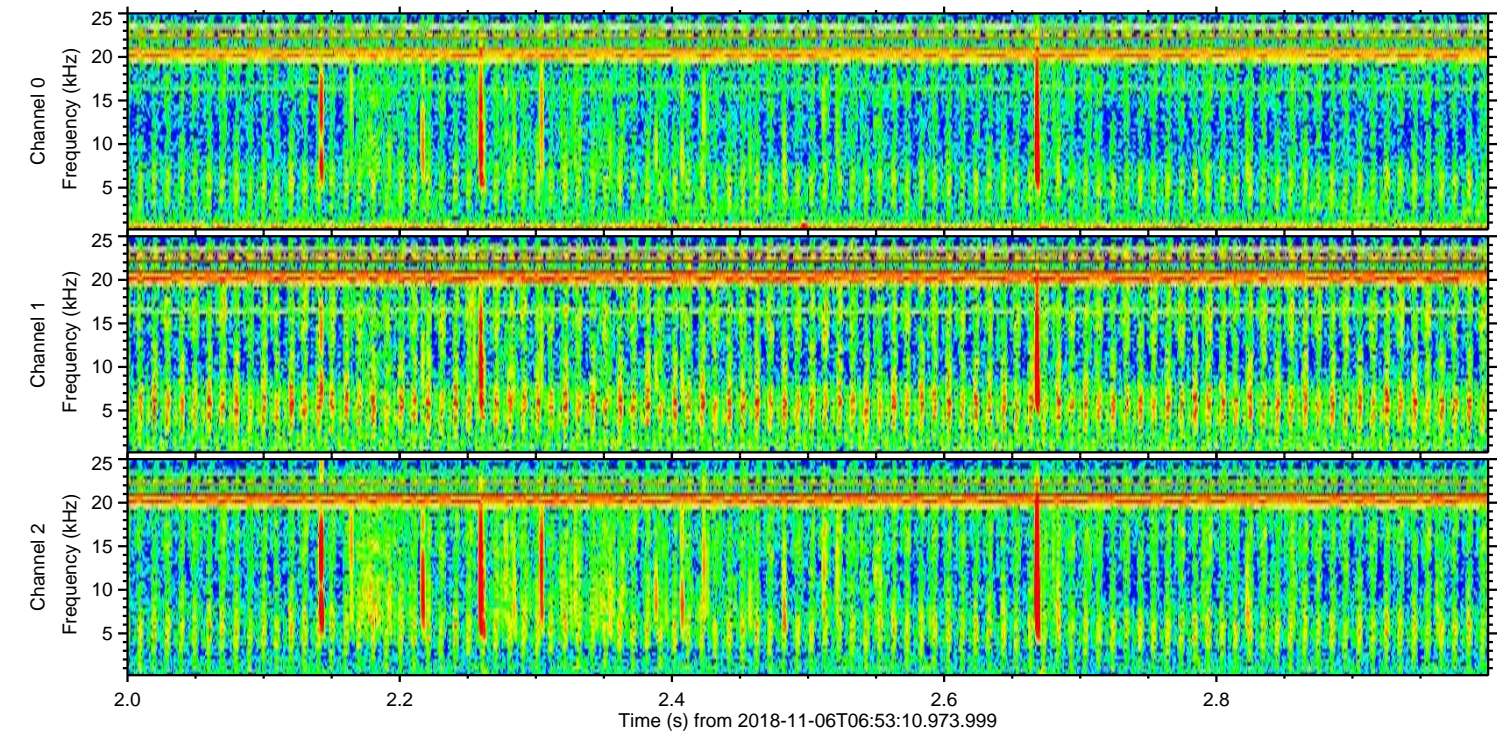
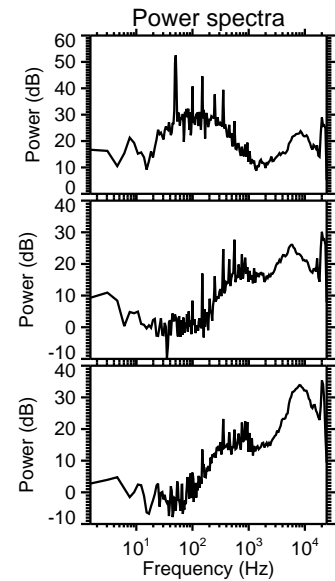
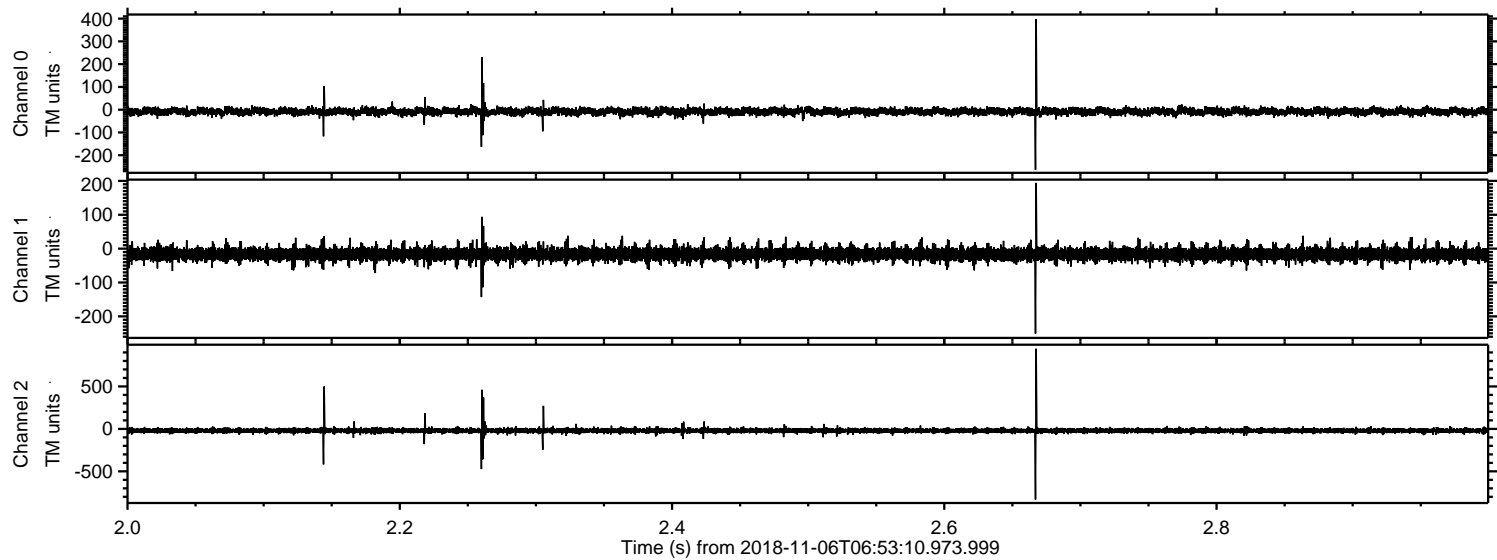
Processed Tue Nov 6 08:01:39 2018 by ELM ver.2012-10-06 from 001\_\_elm20181106\_065309\_\_dat00.bin





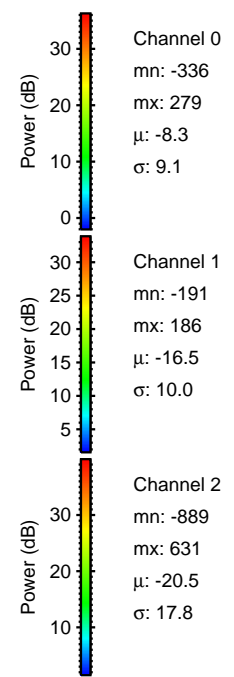
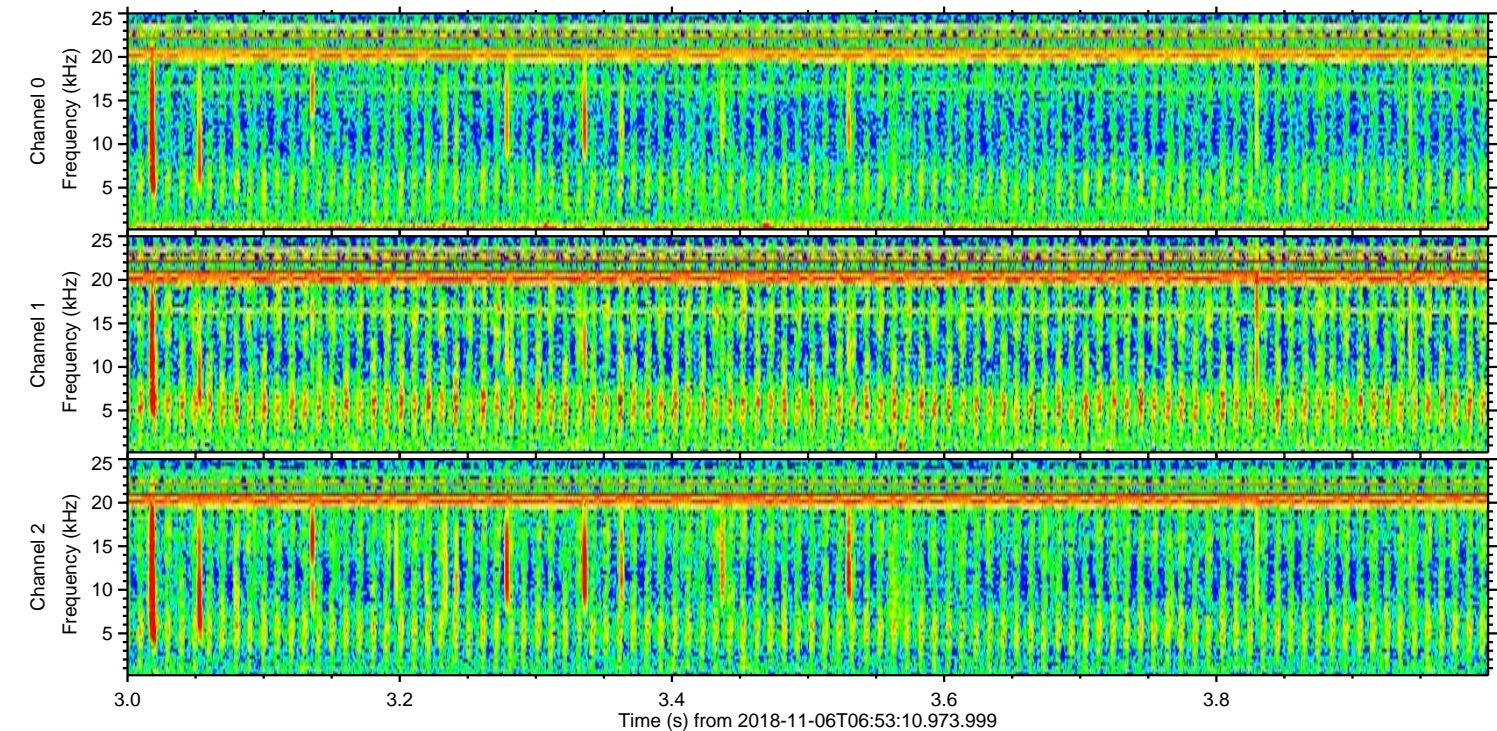
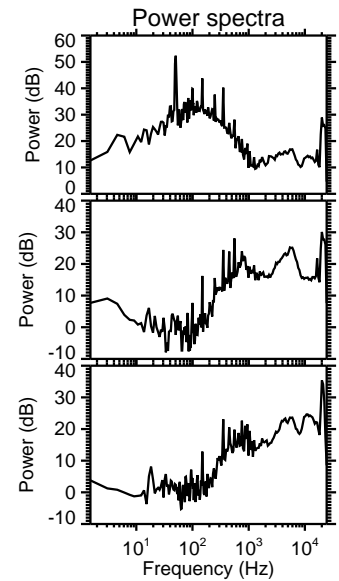
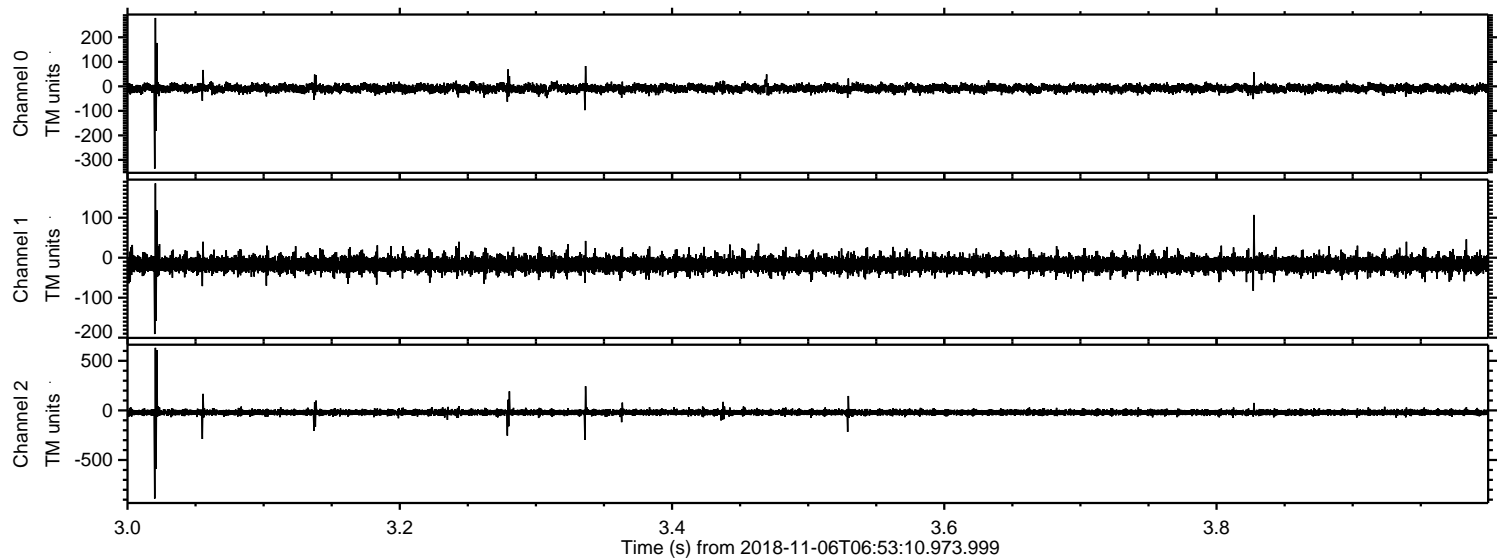
ELMAVAN 3D WAVEFORMS (Measured data sampled at 50 kHz) 51000 packets of 144 samples from 2018-11-06T06:53:10.973.999. Part 3/147

Processed Tue Nov 6 08:01:40 2018 by ELM ver.2012-10-06 from 001\_\_elm20181106\_065309\_\_dat00.bin



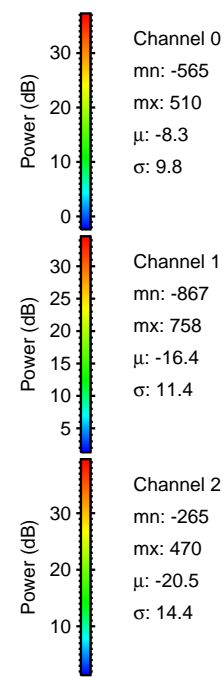
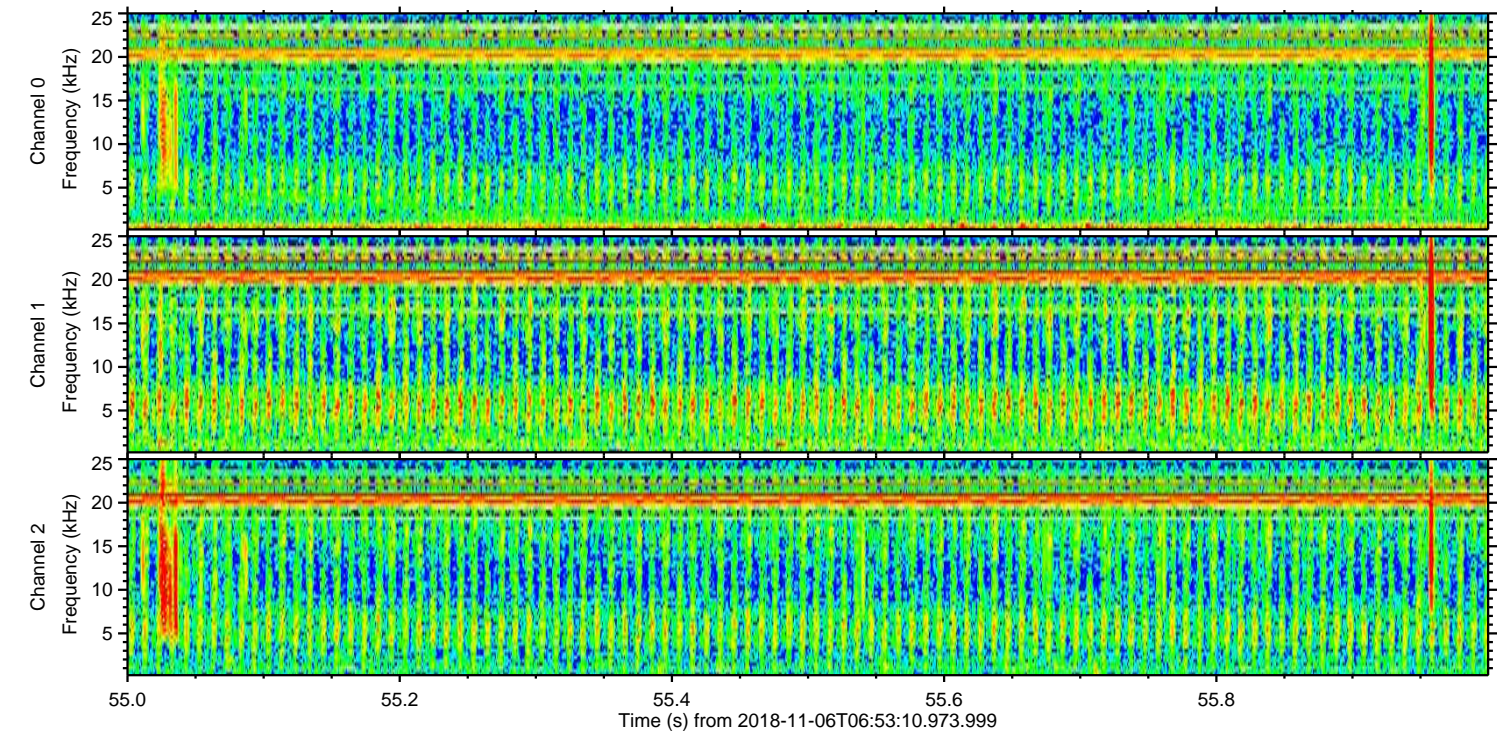
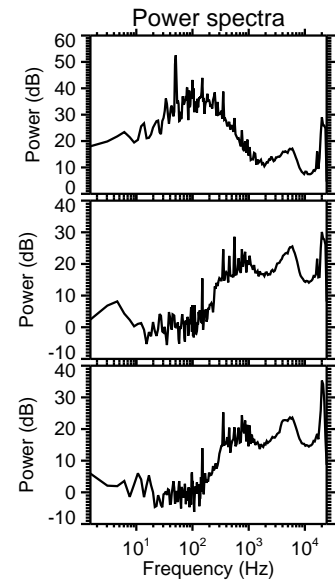
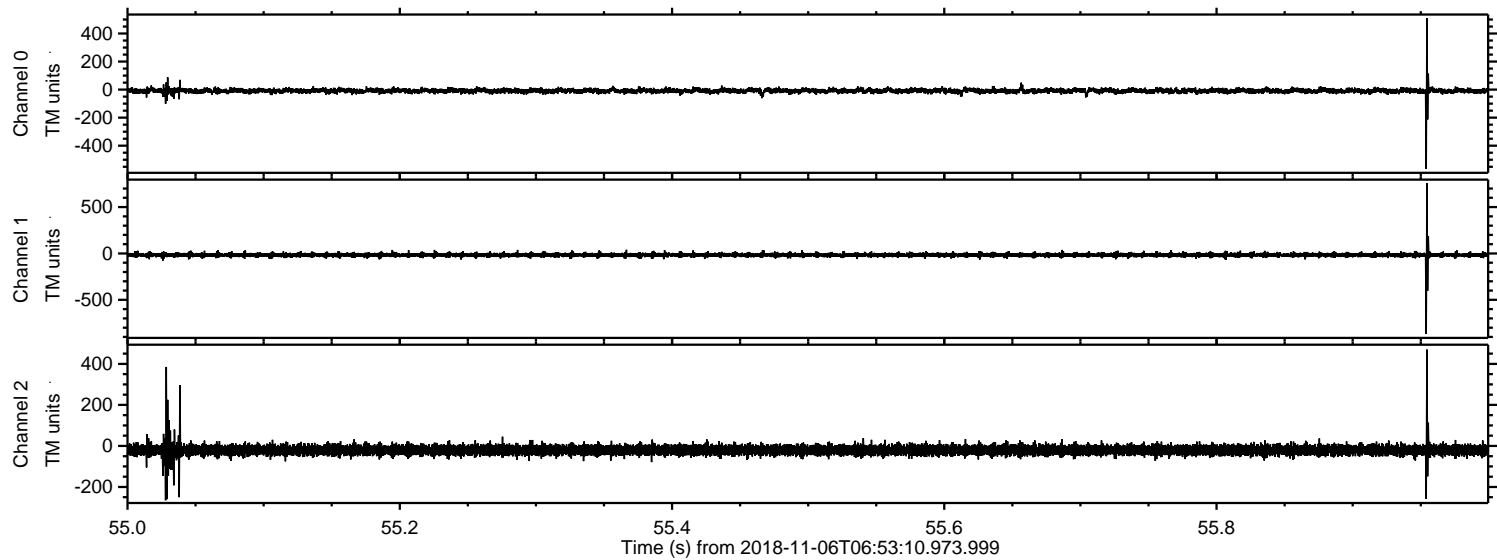


Processed Tue Nov 6 08:01:41 2018 by ELM ver.2012-10-06 from 001\_\_elm20181106\_065309\_\_dat00.bin



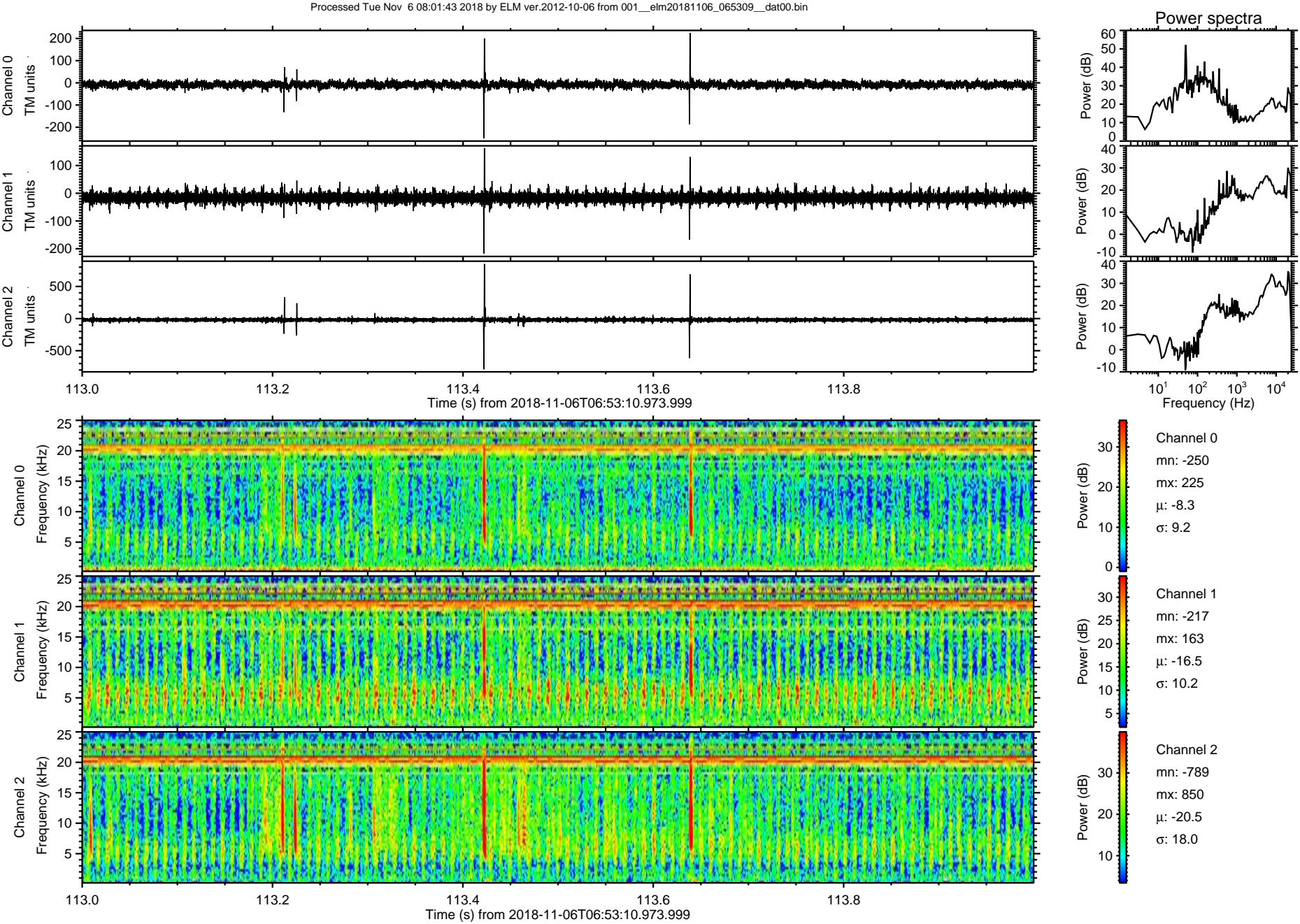


Processed Tue Nov 6 08:01:42 2018 by ELM ver.2012-10-06 from 001\_\_elm20181106\_065309\_\_dat00.bin



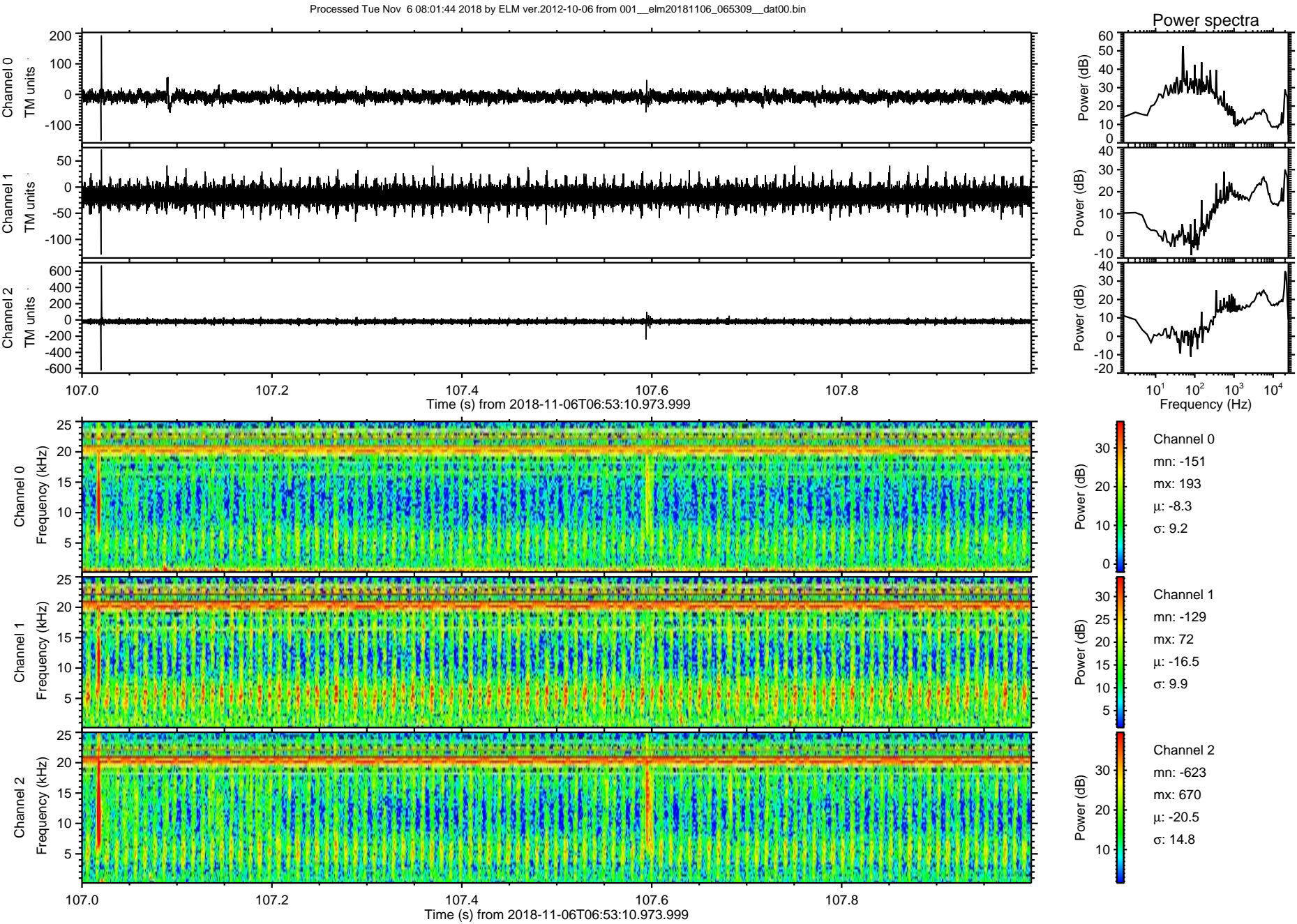


ELMAVAN 3D WAVEFORMS (Measured data sampled at 50 kHz) 51000 packets of 144 samples from 2018-11-06T06:53:10.973.999. Part 114/147



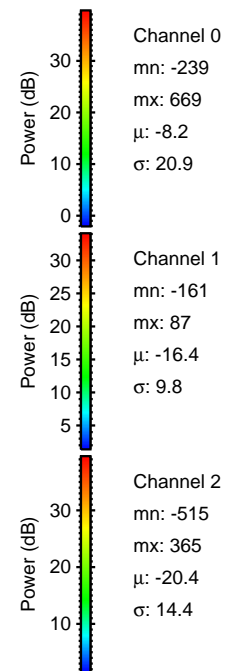
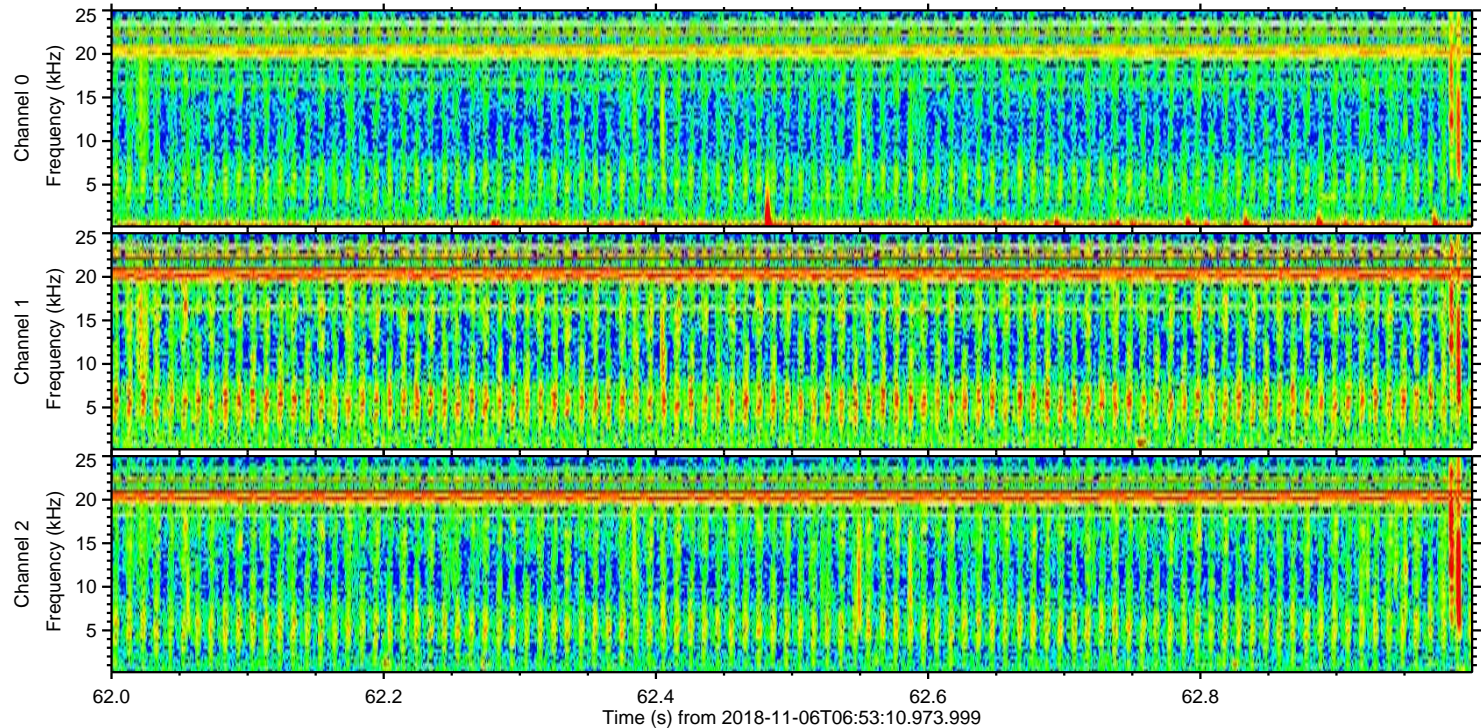
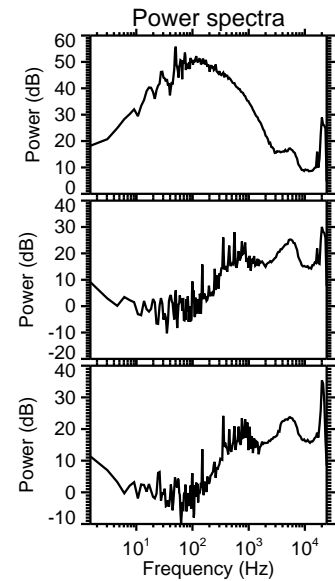
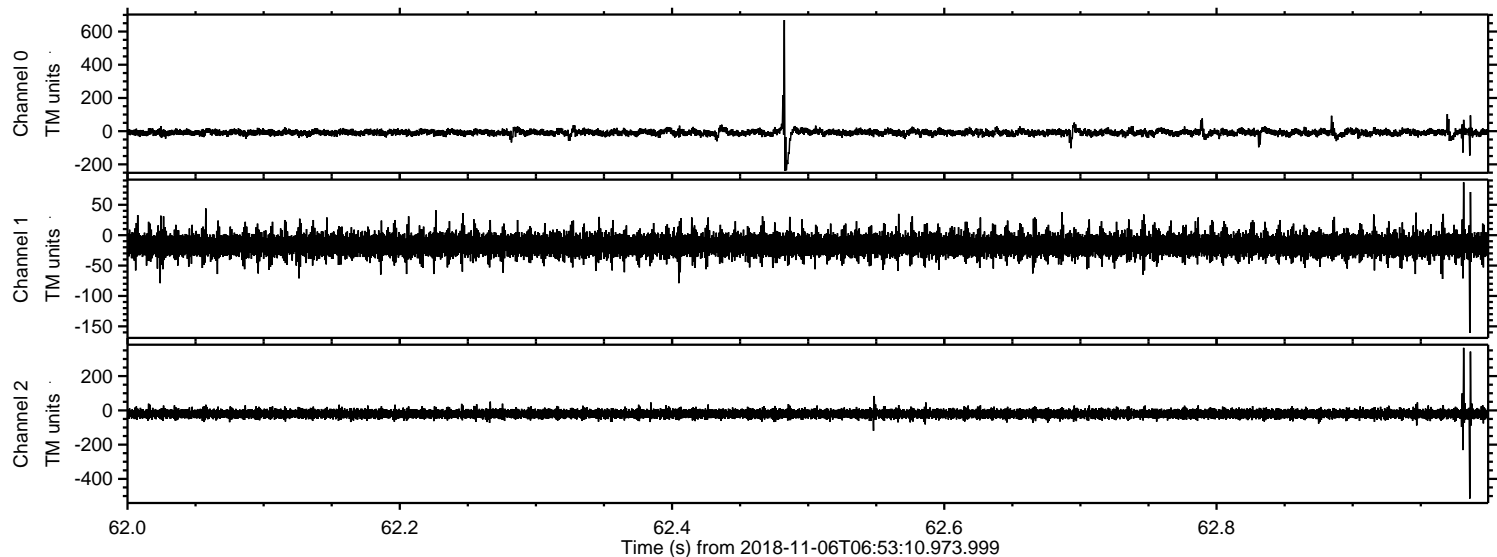


ELMAVAN 3D WAVEFORMS (Measured data sampled at 50 kHz) 51000 packets of 144 samples from 2018-11-06T06:53:10.973.999. Part 108/147





Processed Tue Nov 6 08:01:44 2018 by ELM ver.2012-10-06 from 001\_\_elm20181106\_065309\_\_dat00.bin





Processed Tue Nov 6 08:01:45 2018 by ELM ver.2012-10-06 from 001\_\_elm20181106\_065309\_\_dat00.bin

