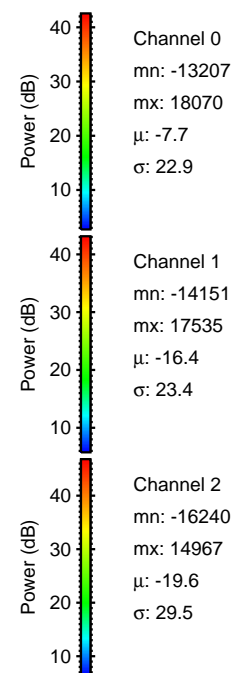
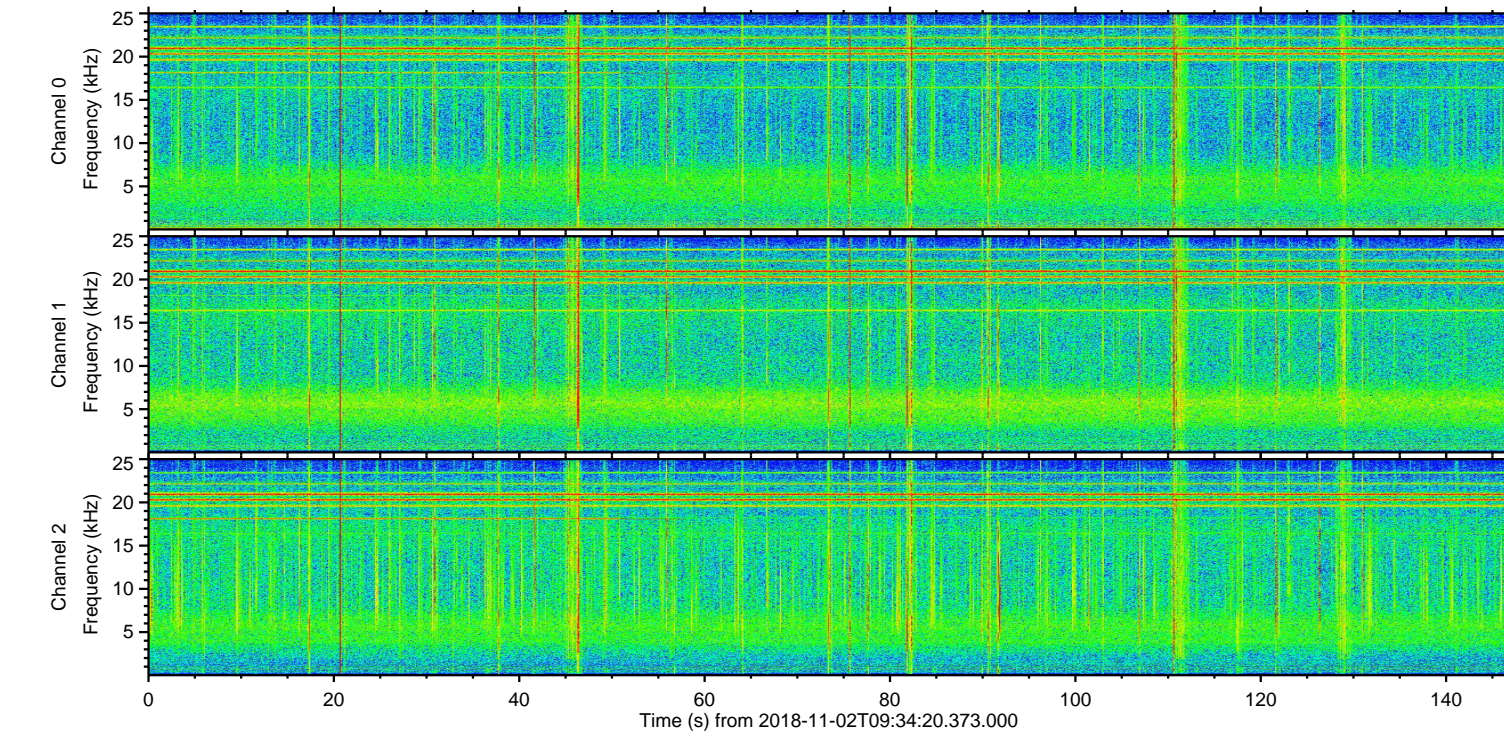
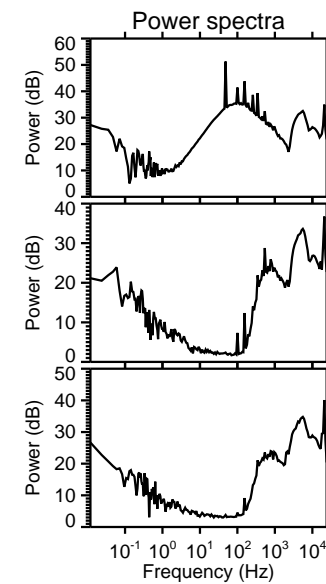
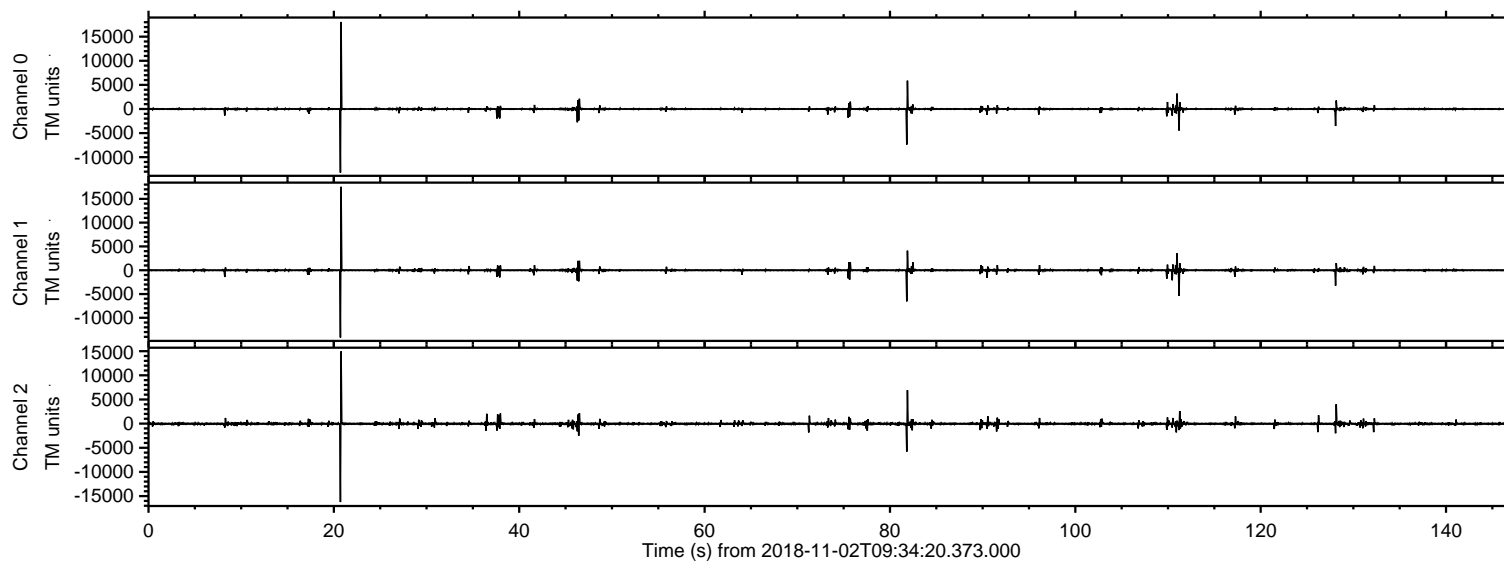


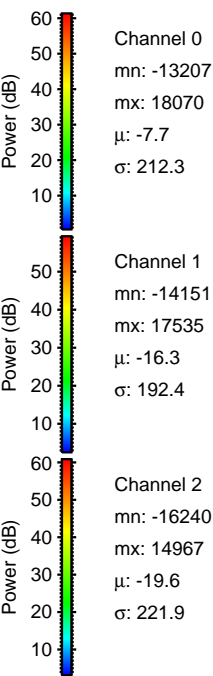
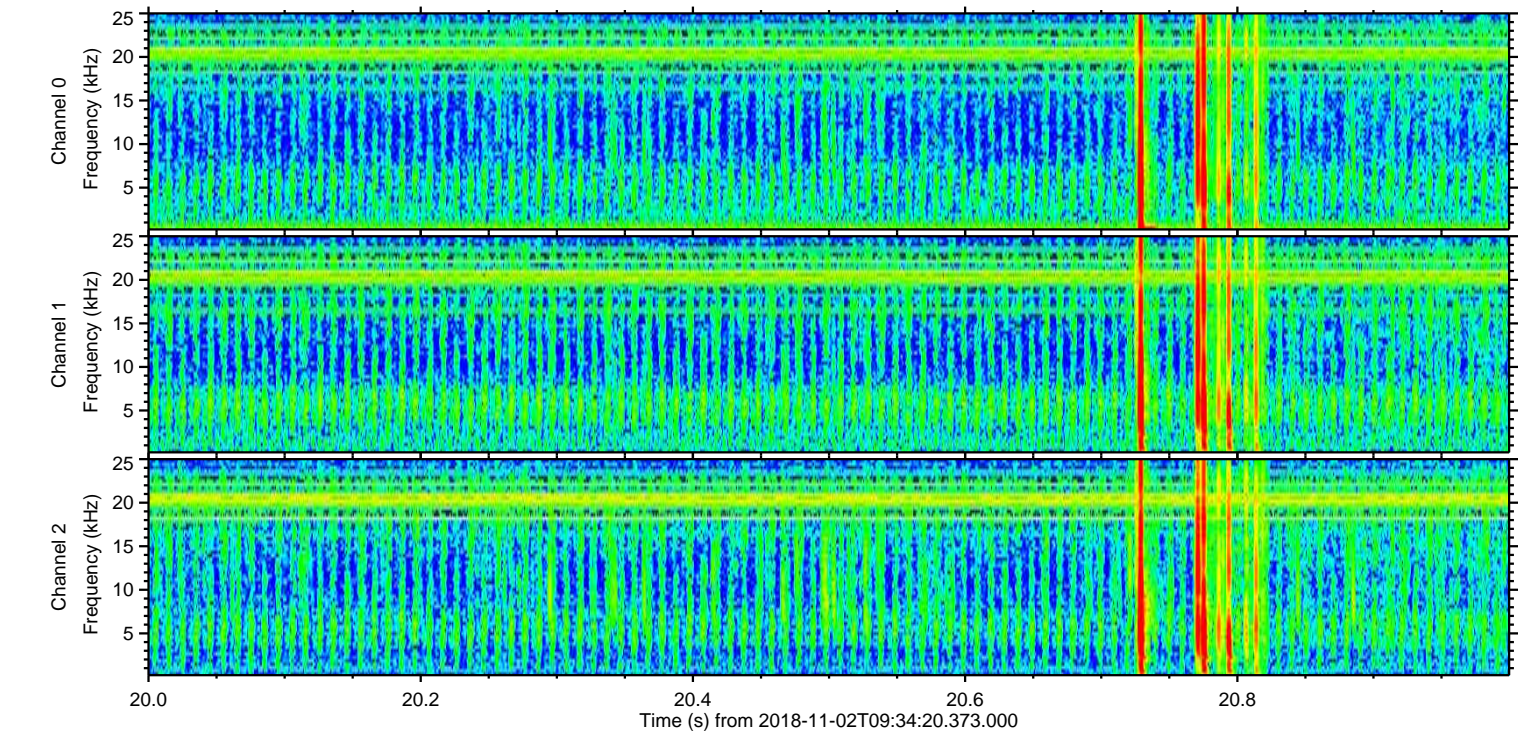
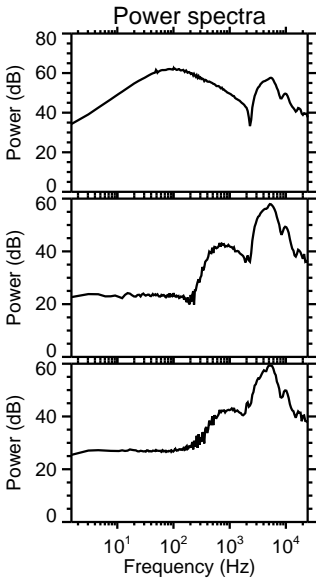
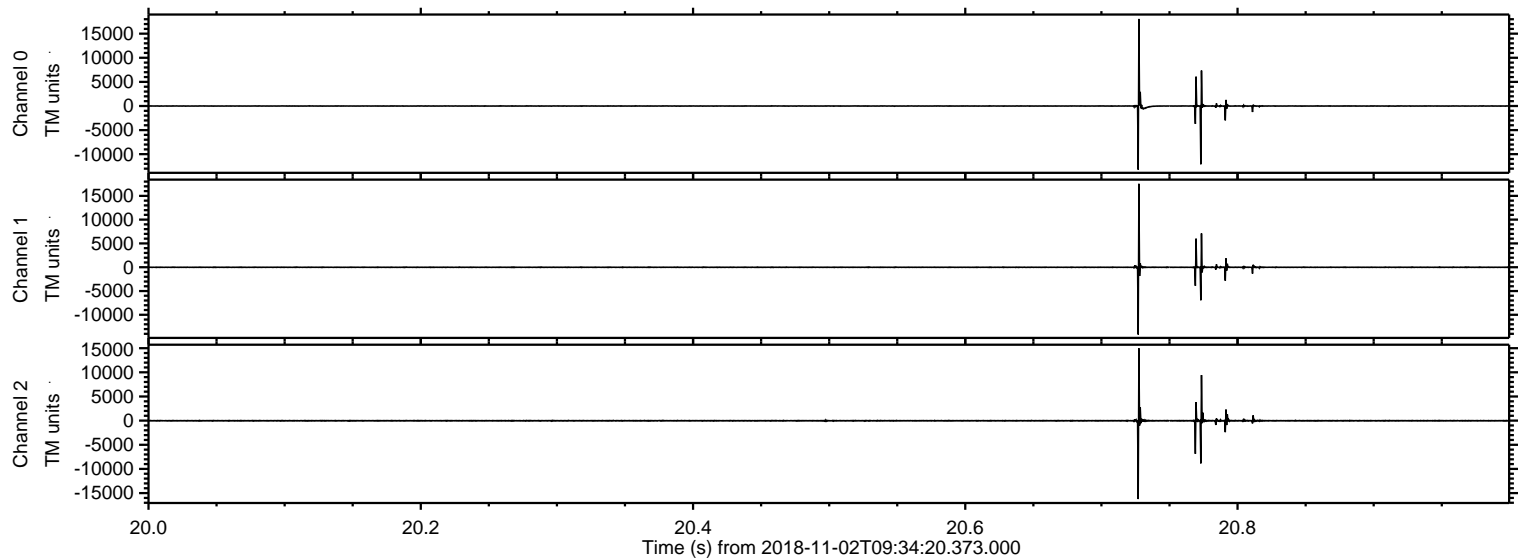
# ELMAVAN 3D WAVEFORMS (Measured data sampled at 50 kHz) 51000 packets of 144 samples from 2018-11-02T09:34:20.373.000.

Processed Fri Nov 2 10:42:39 2018 by ELM ver.2012-10-06 from 001\_\_elm20181102\_093419\_\_dat00.bin



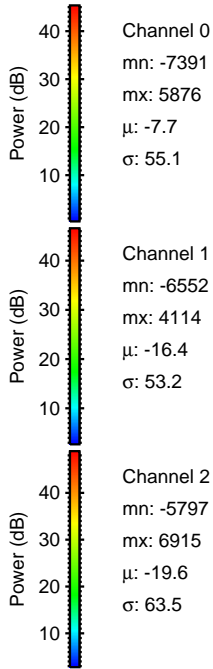
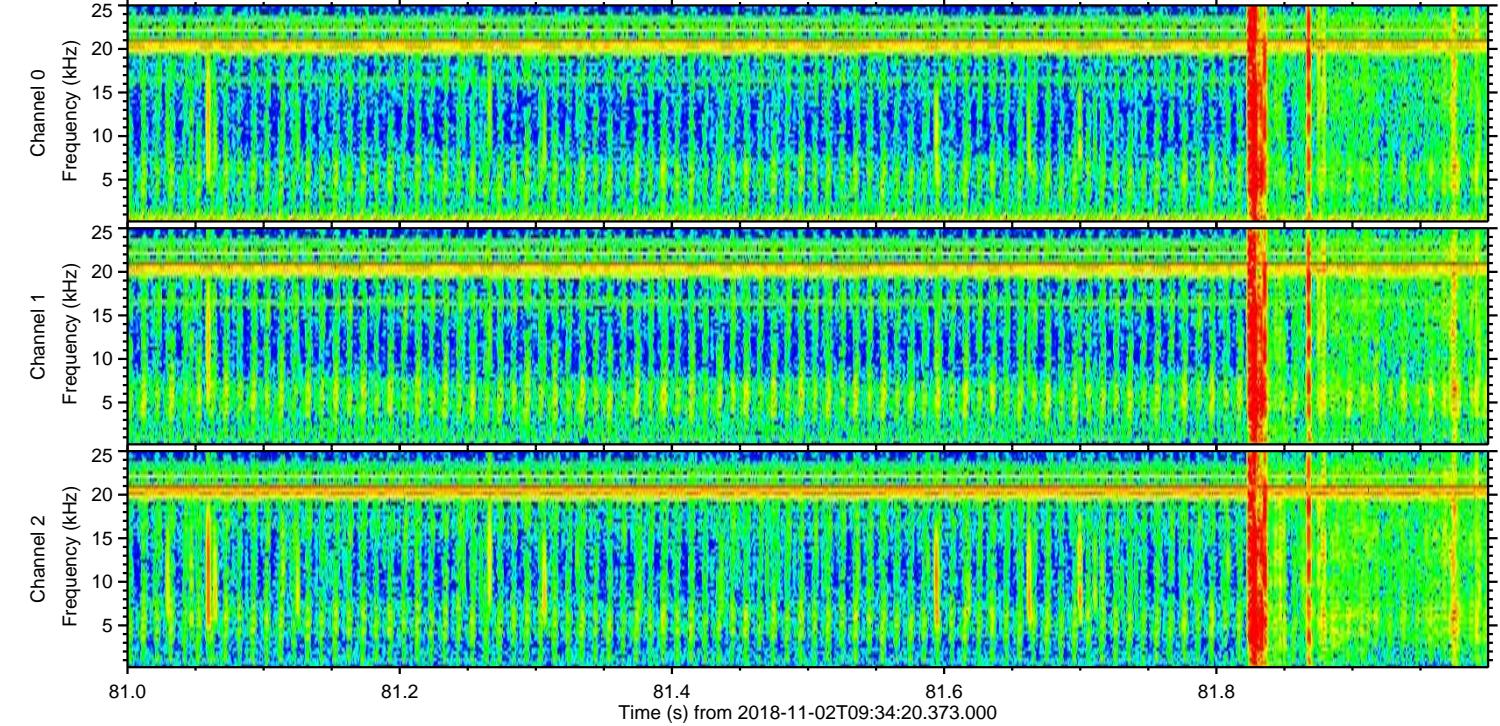
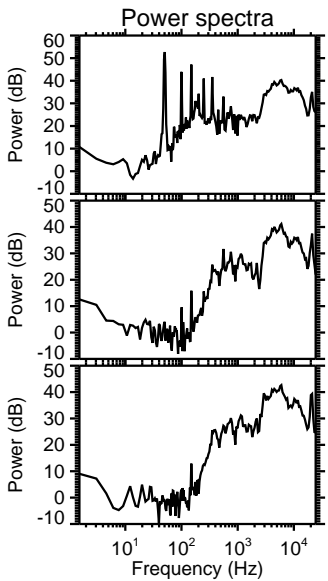
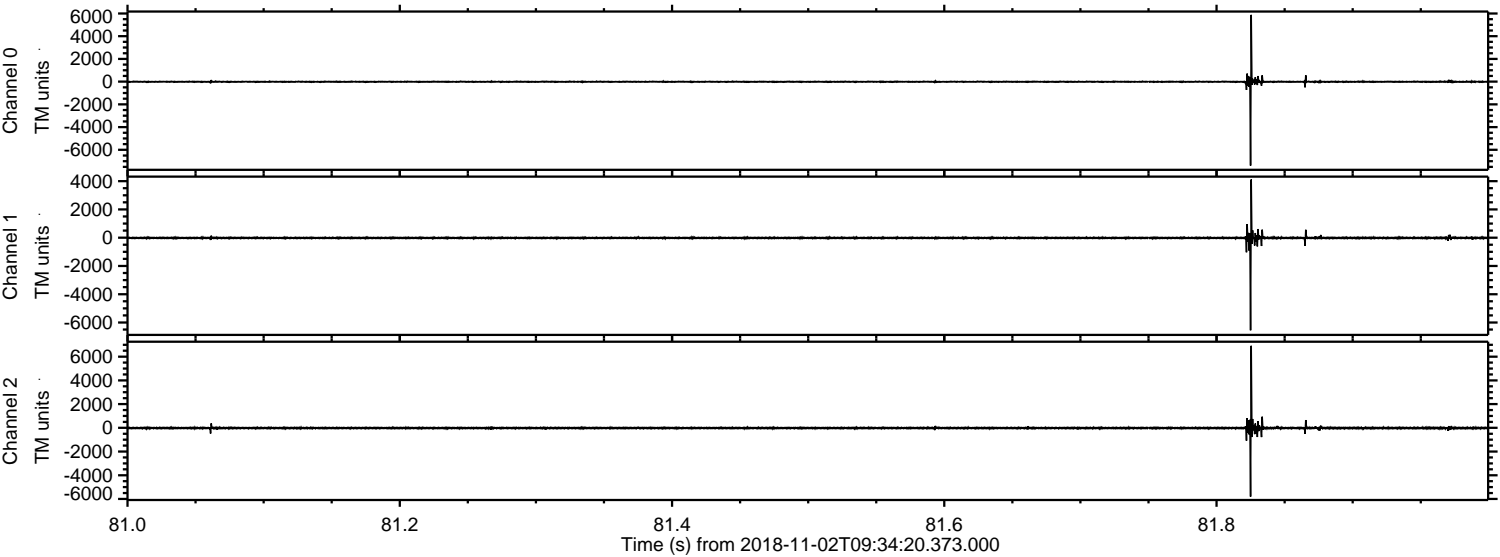


Processed Fri Nov 2 10:42:48 2018 by ELM ver.2012-10-06 from 001\_\_elm20181102\_093419\_\_dat00.bin





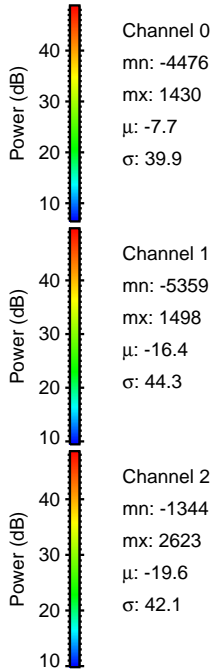
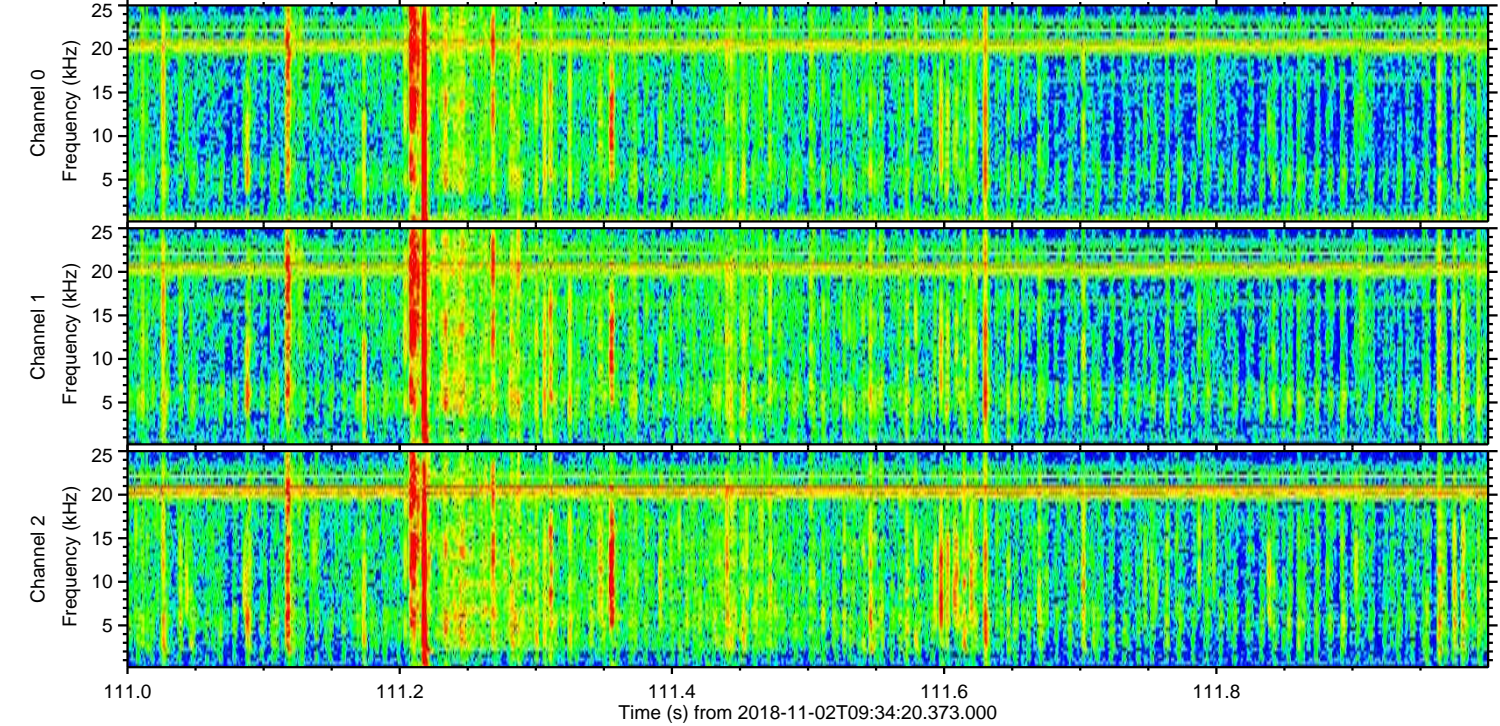
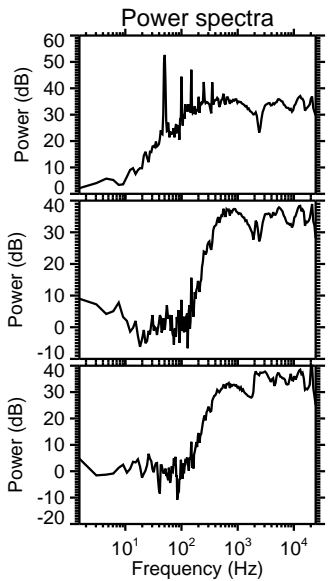
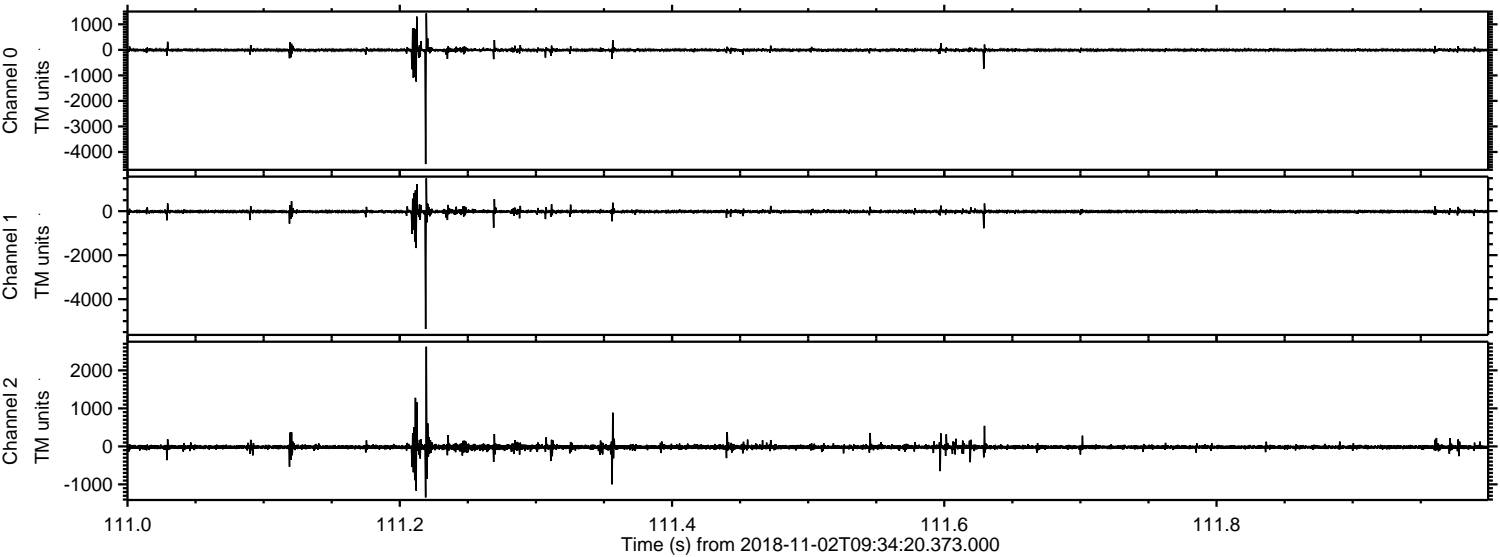
Processed Fri Nov 2 10:42:48 2018 by ELM ver.2012-10-06 from 001\_\_elm20181102\_093419\_\_dat00.bin





ELMAVAN 3D WAVEFORMS (Measured data sampled at 50 kHz) 51000 packets of 144 samples from 2018-11-02T09:34:20.373.000. Part 112/147

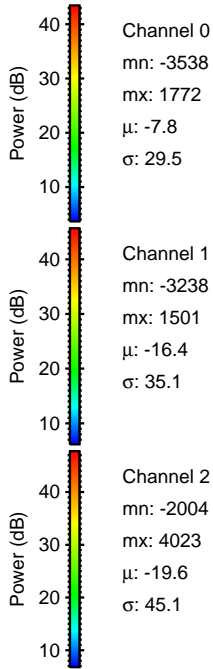
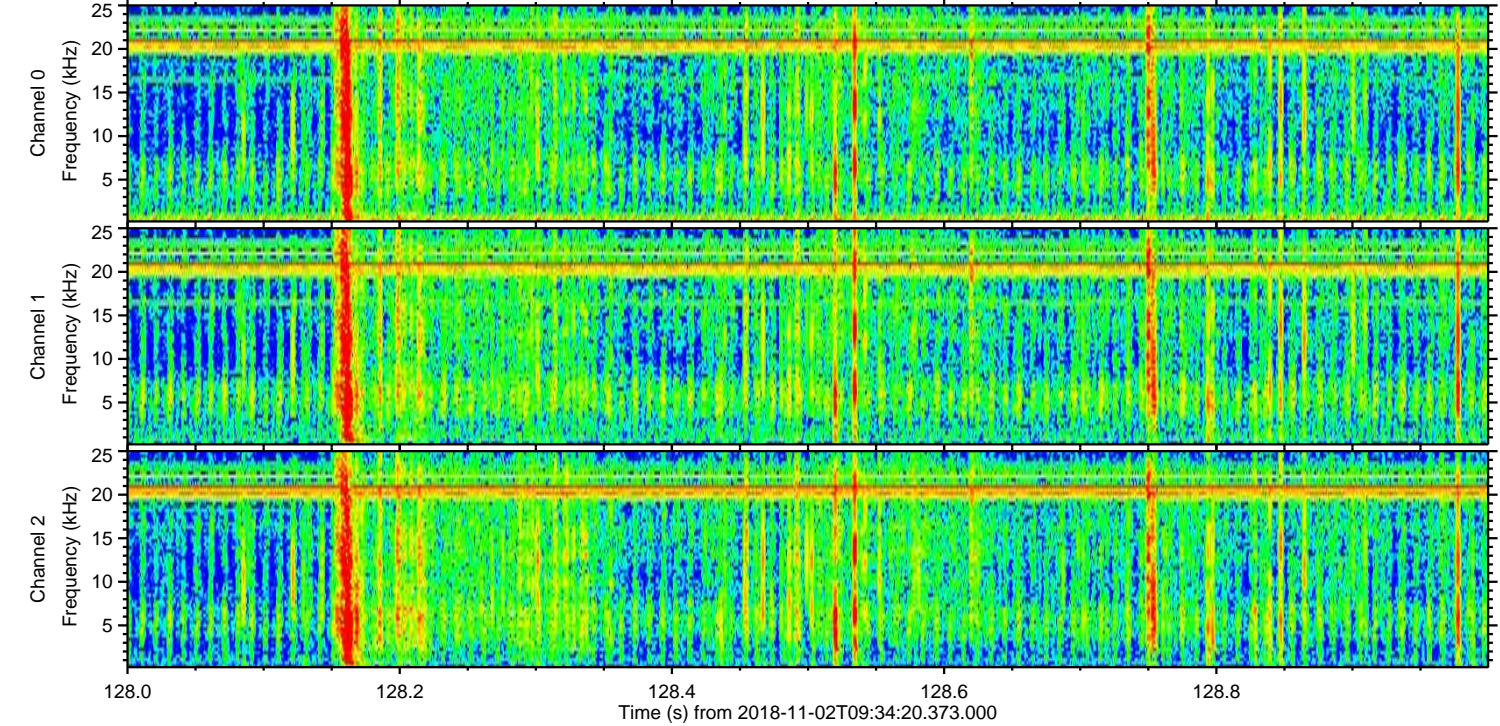
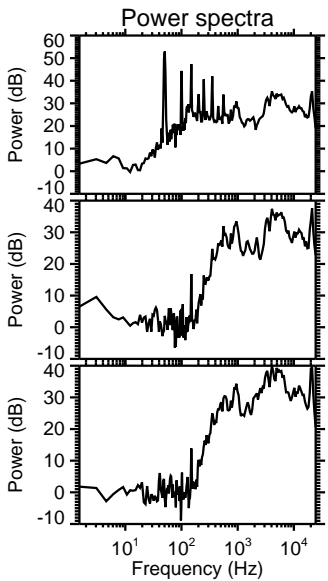
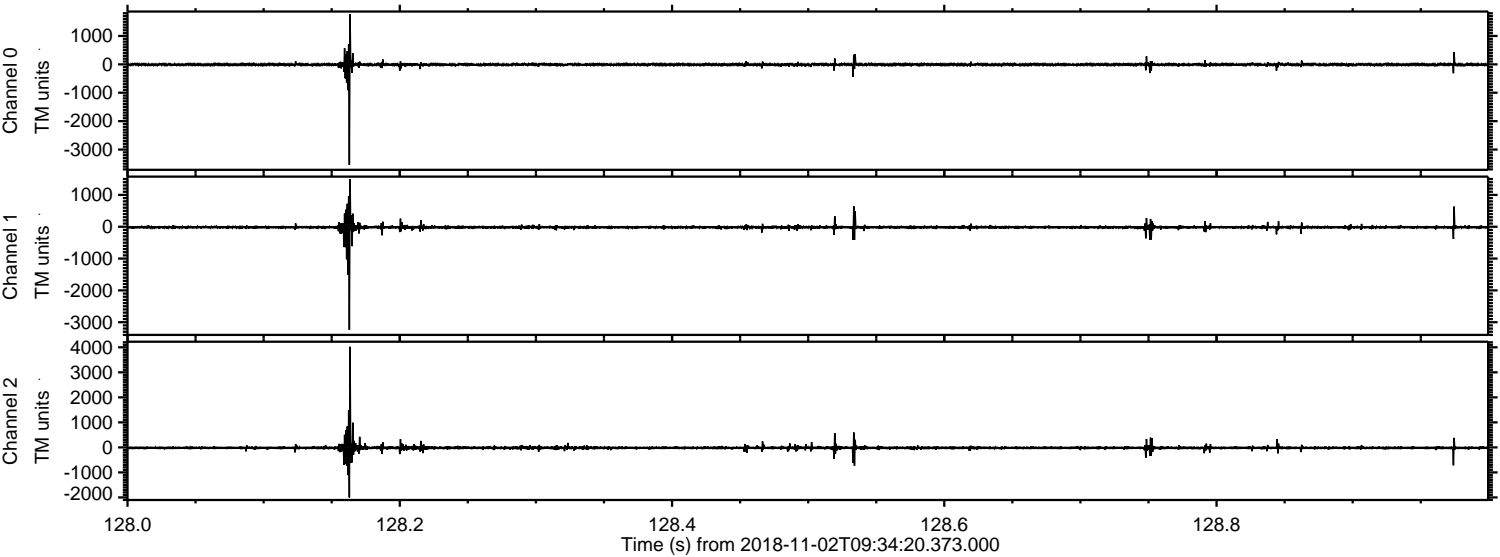
Processed Fri Nov 2 10:42:49 2018 by ELM ver.2012-10-06 from 001\_\_elm20181102\_093419\_\_dat00.bin





ELMAVAN 3D WAVEFORMS (Measured data sampled at 50 kHz) 51000 packets of 144 samples from 2018-11-02T09:34:20.373.000. Part 129/147

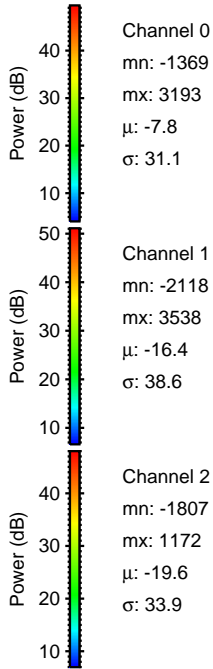
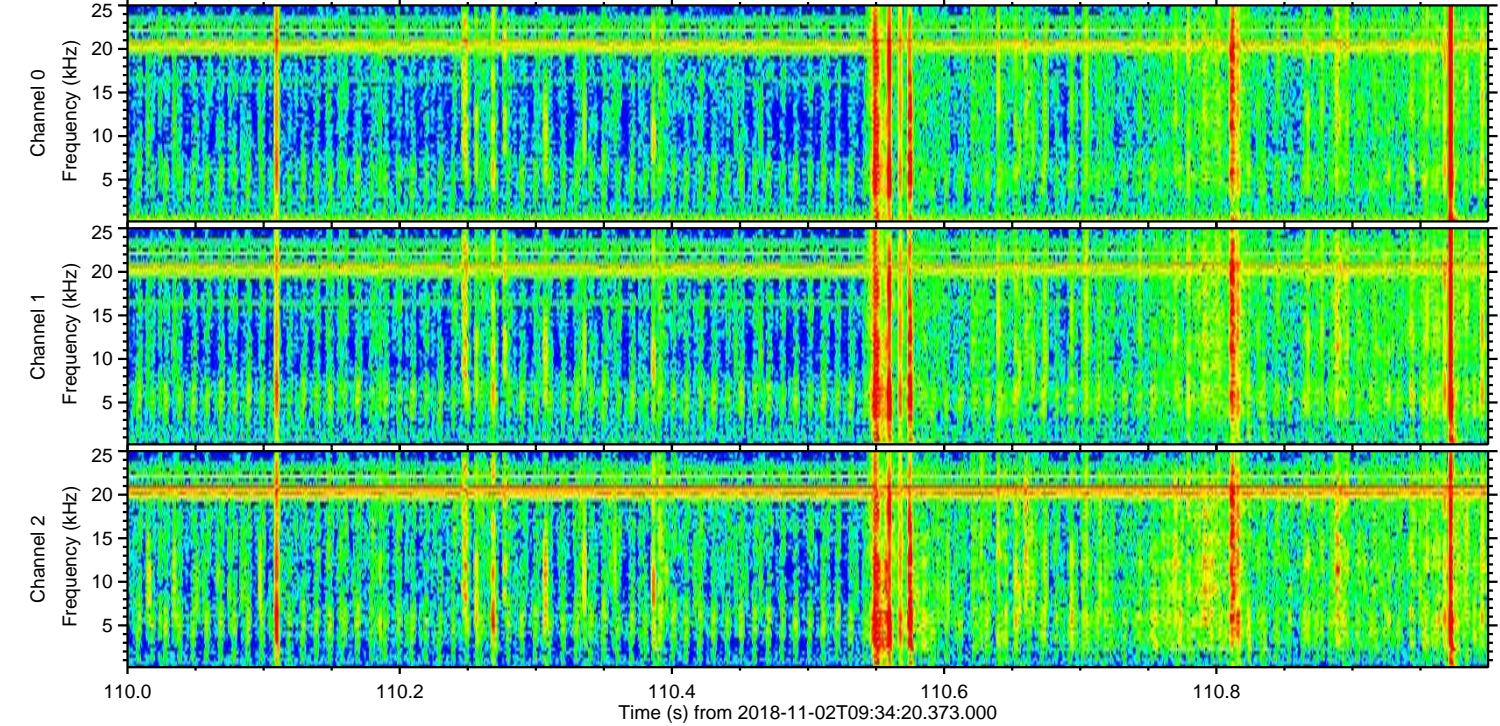
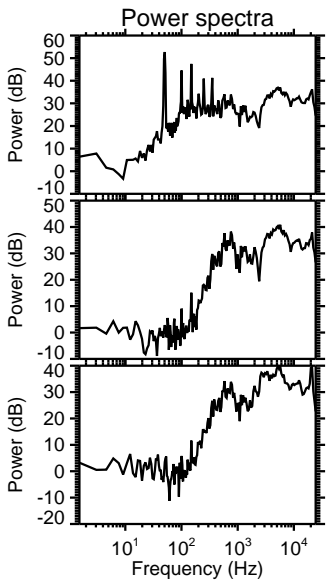
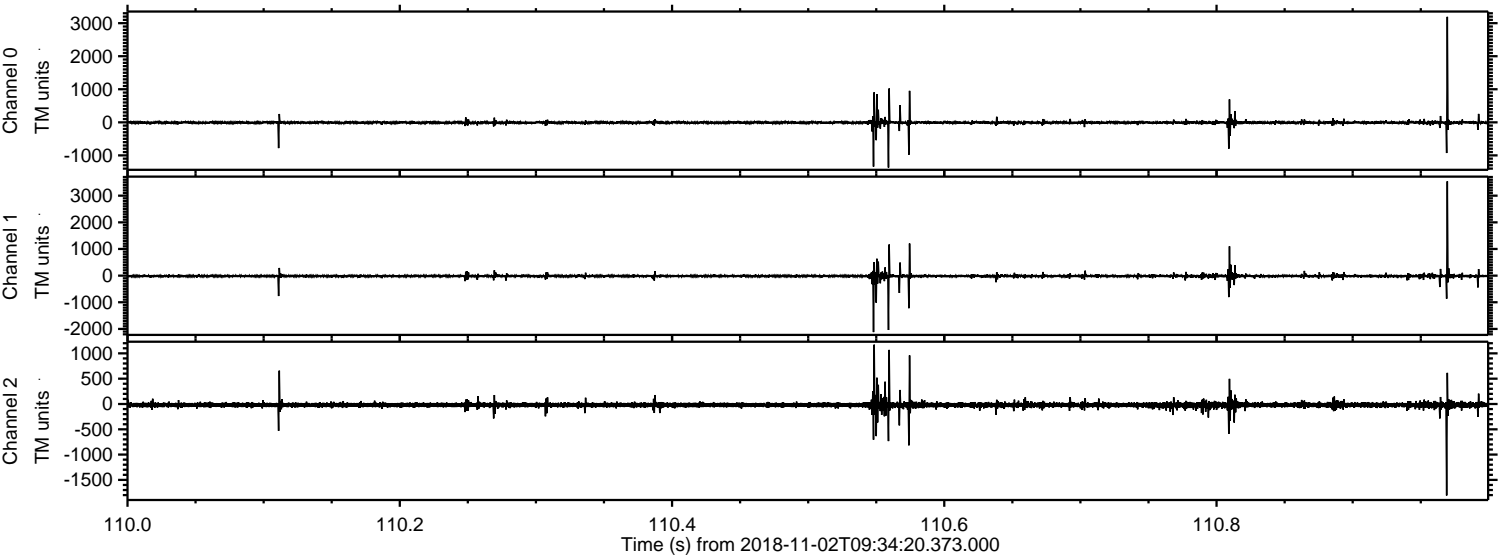
Processed Fri Nov 2 10:42:50 2018 by ELM ver.2012-10-06 from 001\_\_elm20181102\_093419\_\_dat00.bin





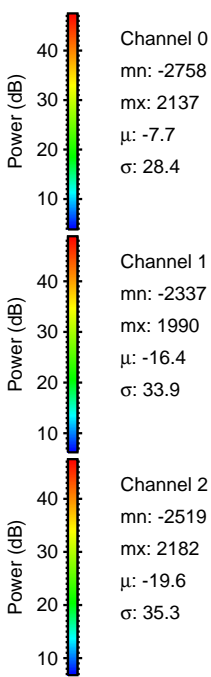
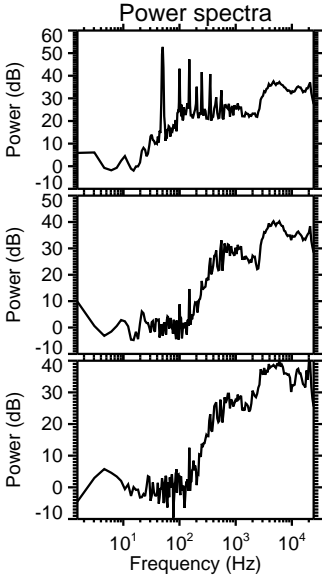
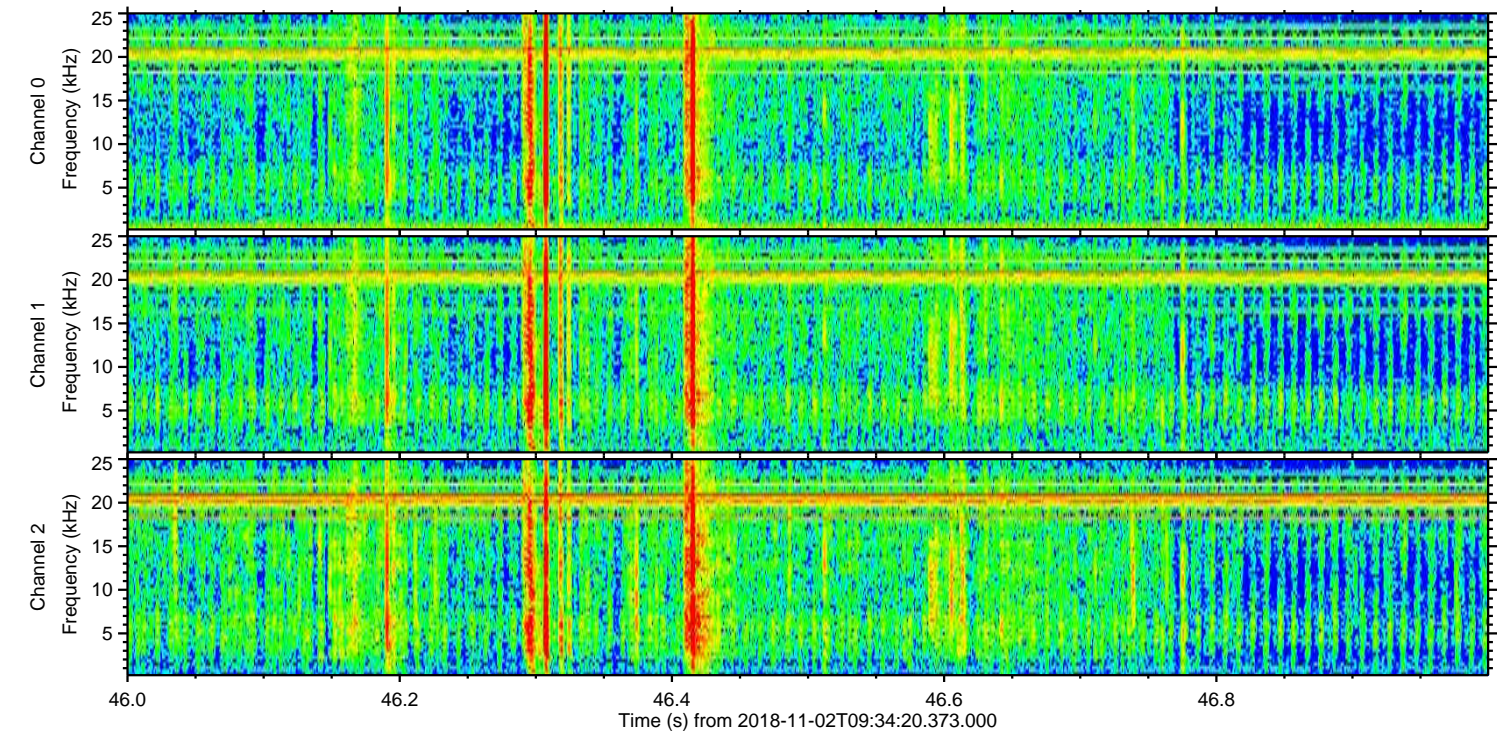
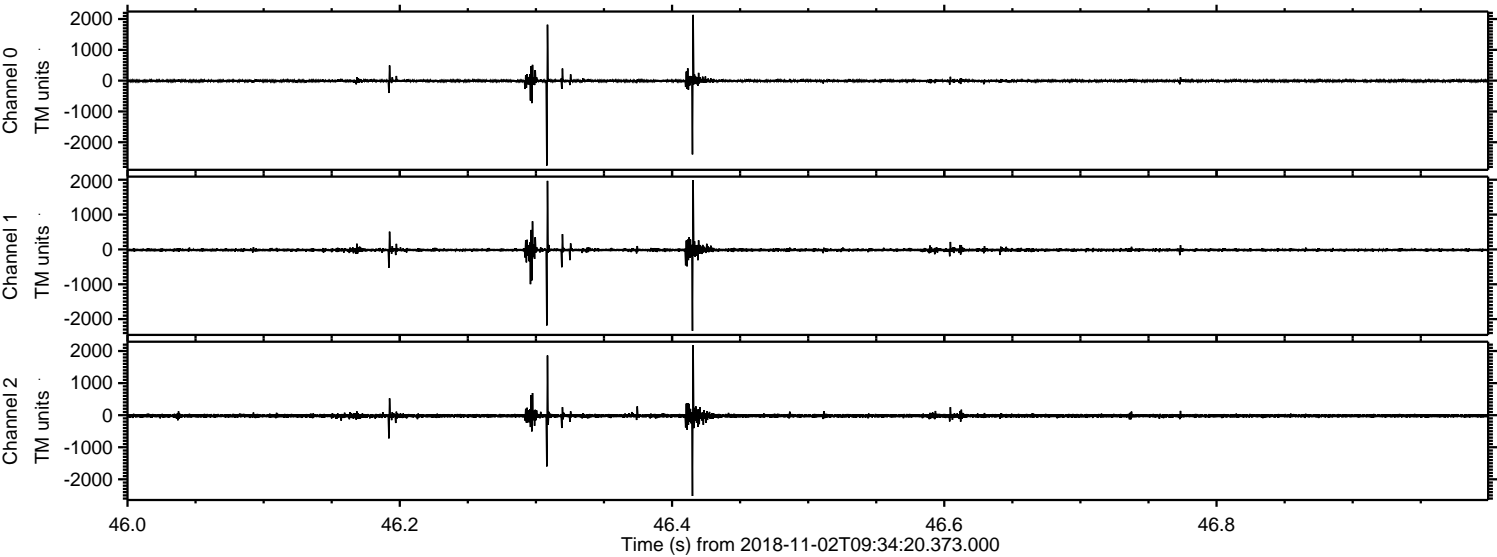
ELMAVAN 3D WAVEFORMS (Measured data sampled at 50 kHz) 51000 packets of 144 samples from 2018-11-02T09:34:20.373.000. Part 111/147

Processed Fri Nov 2 10:42:51 2018 by ELM ver.2012-10-06 from 001\_\_elm20181102\_093419\_\_dat00.bin



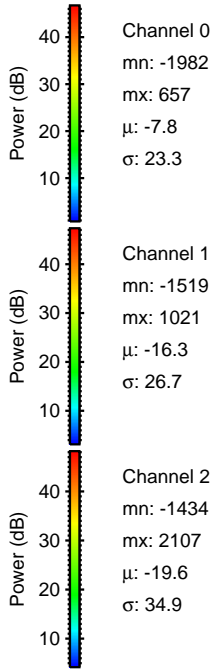
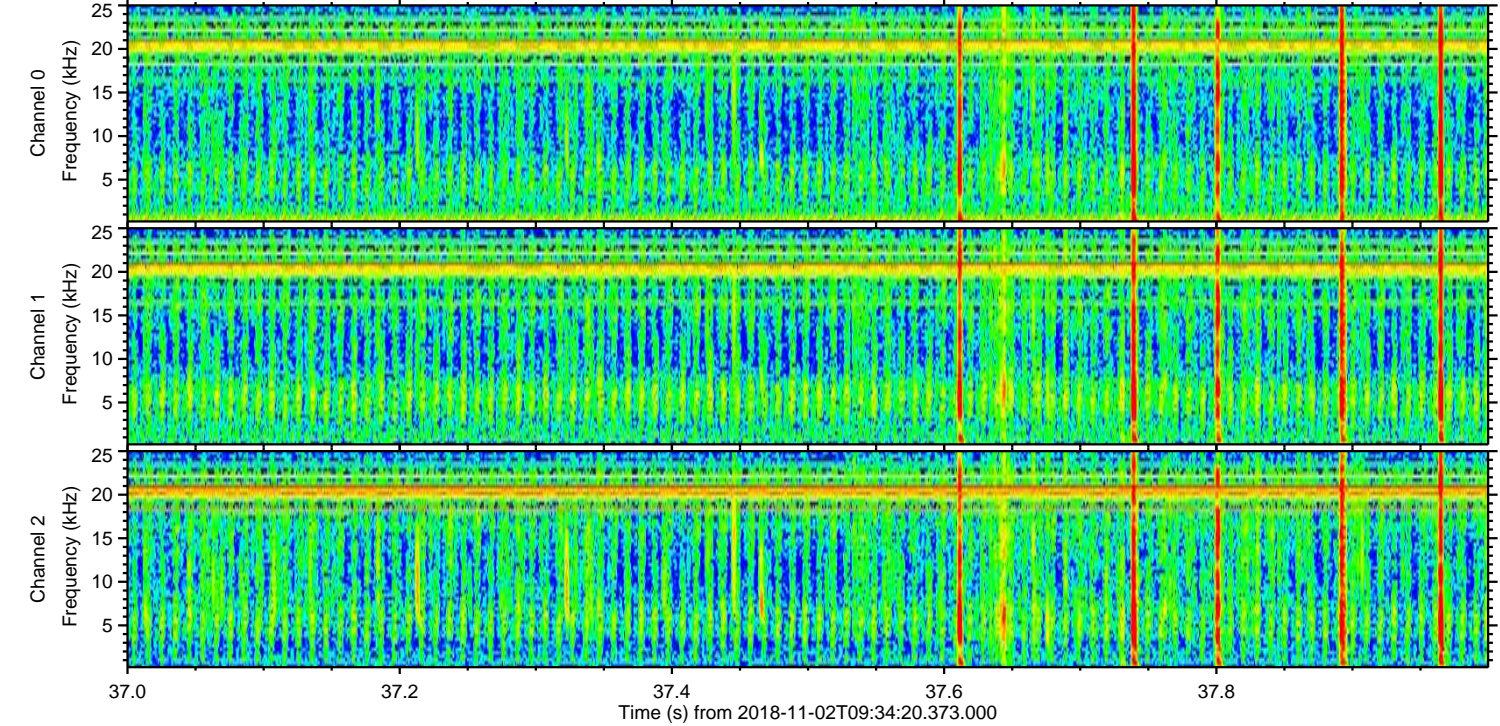
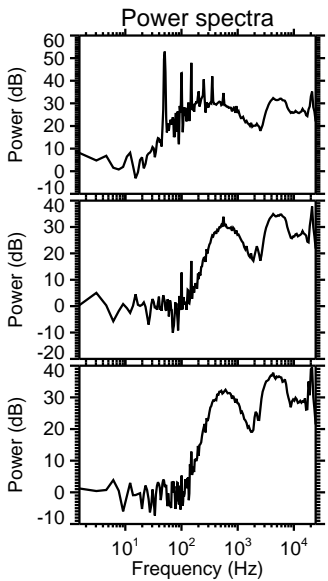
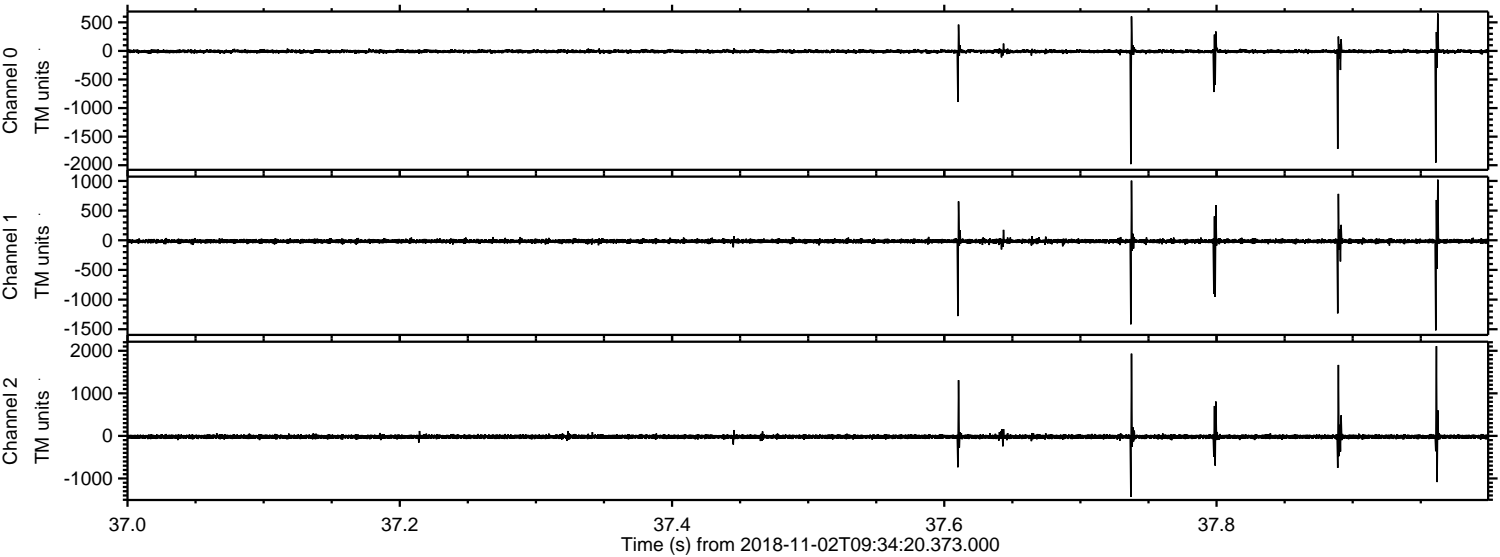


Processed Fri Nov 2 10:42:52 2018 by ELM ver.2012-10-06 from 001\_\_elm20181102\_093419\_\_dat00.bin





Processed Fri Nov 2 10:42:53 2018 by ELM ver.2012-10-06 from 001\_\_elm20181102\_093419\_\_dat00.bin



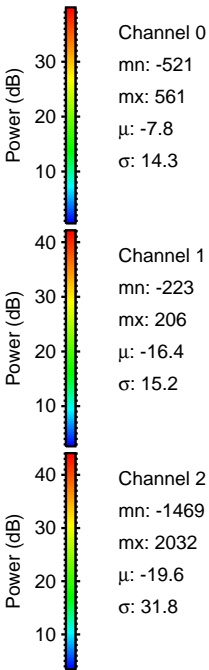
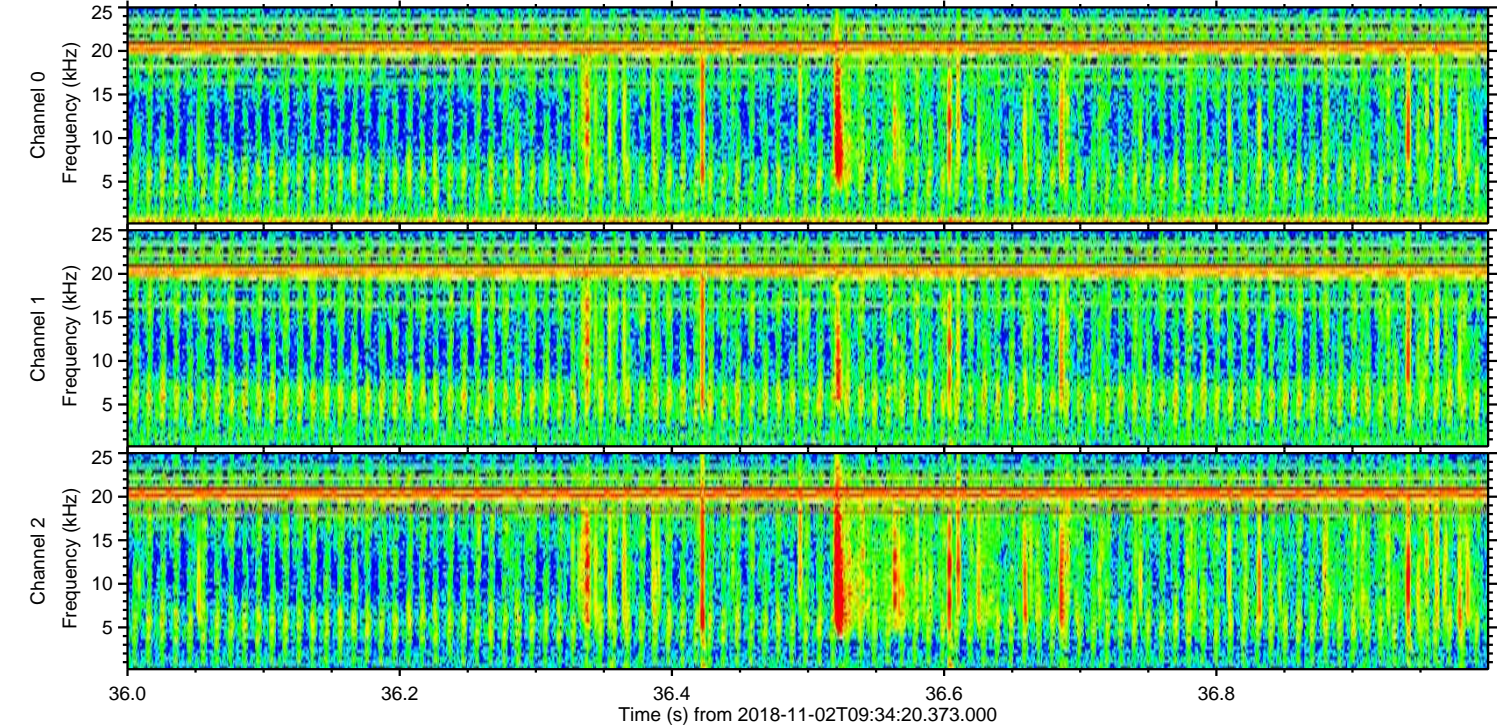
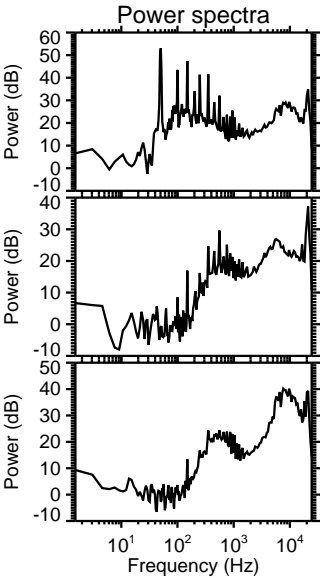
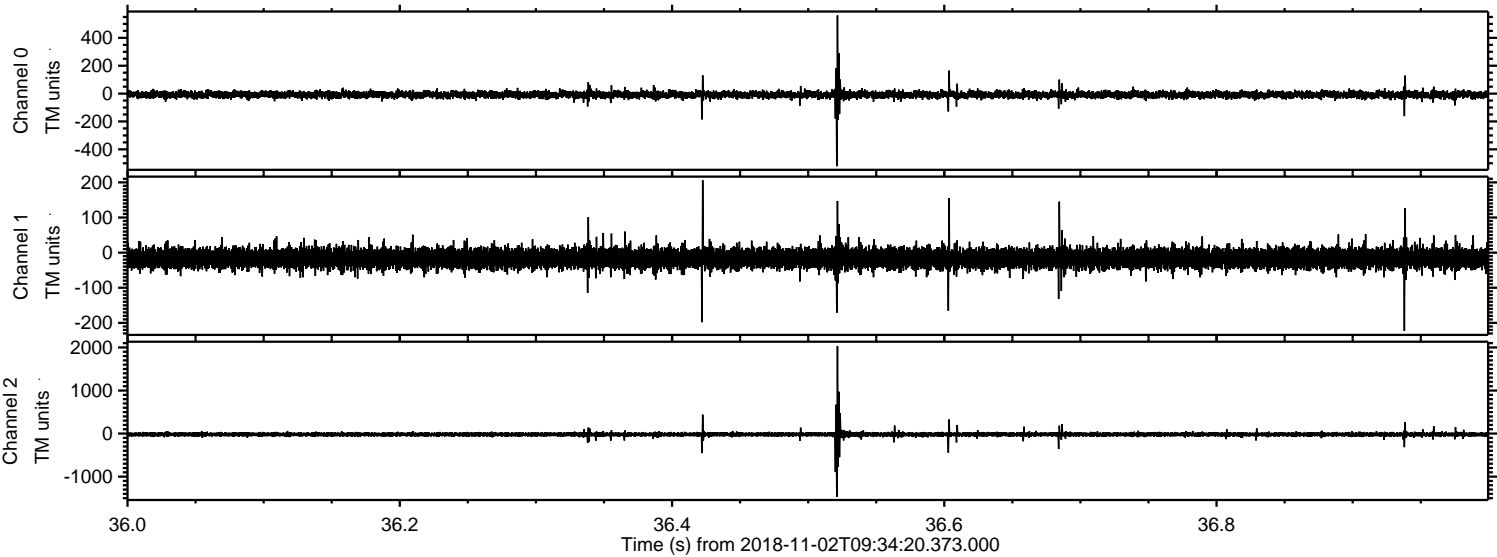
Channel 0  
mn: -1982  
mx: 657  
 $\mu$ : -7.8  
 $\sigma$ : 23.3

Channel 1  
mn: -1519  
mx: 1021  
 $\mu$ : -16.3  
 $\sigma$ : 26.7

Channel 2  
mn: -1434  
mx: 2107  
 $\mu$ : -19.6  
 $\sigma$ : 34.9



Processed Fri Nov 2 10:42:54 2018 by ELM ver.2012-10-06 from 001\_\_elm20181102\_093419\_\_dat00.bin





Processed Fri Nov 2 10:42:54 2018 by ELM ver.2012-10-06 from 001\_\_elm20181102\_093419\_\_dat00.bin

