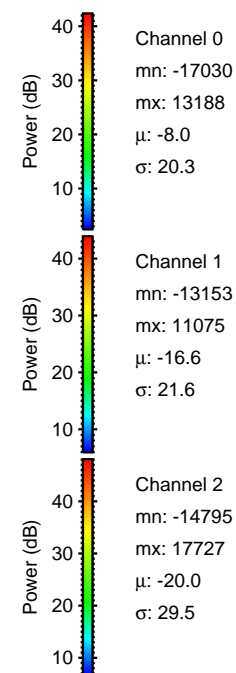
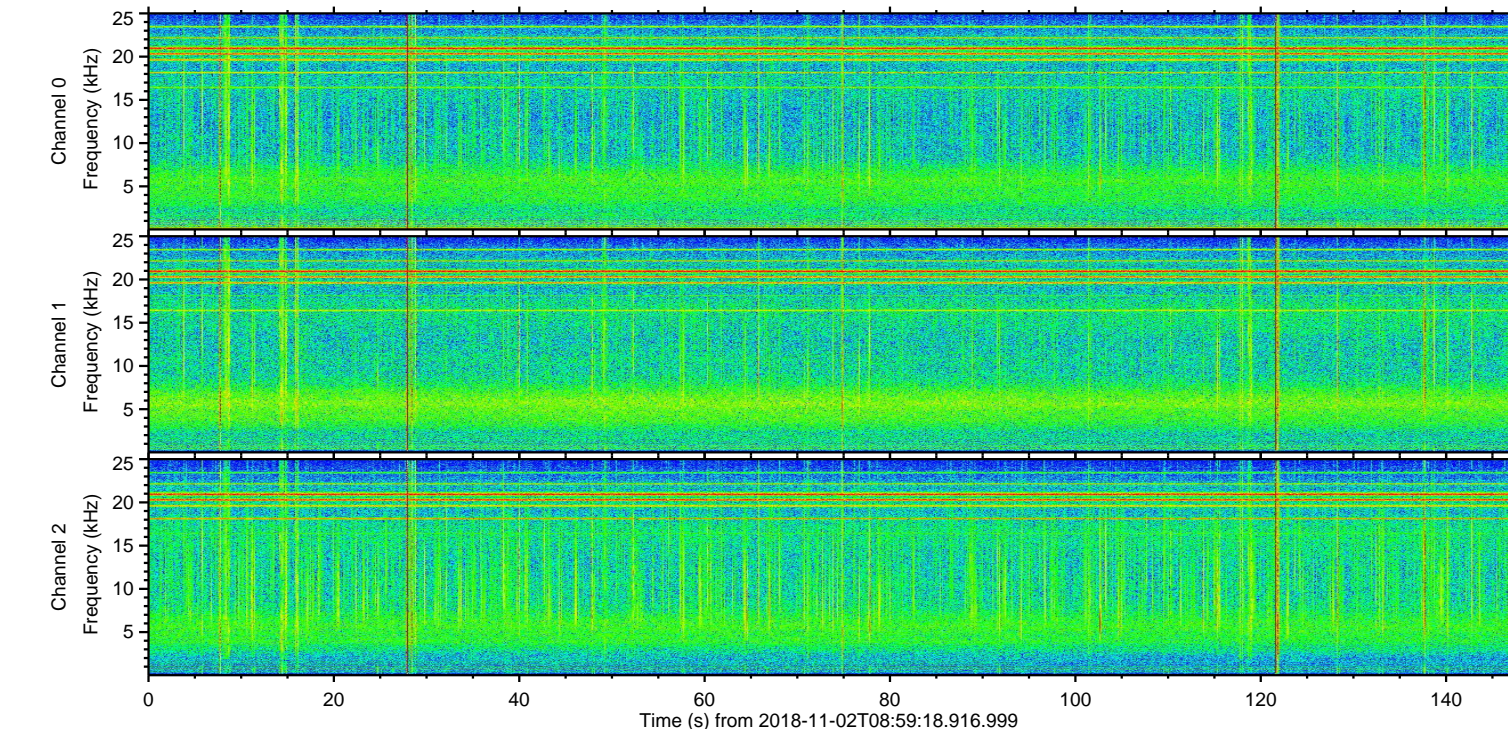
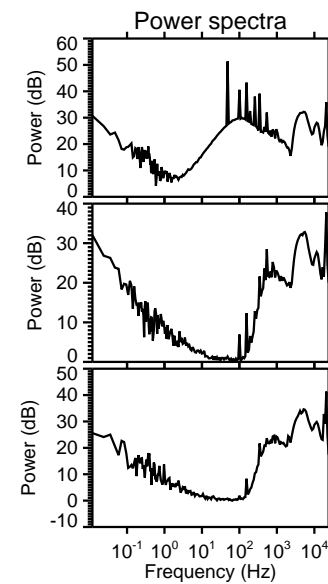
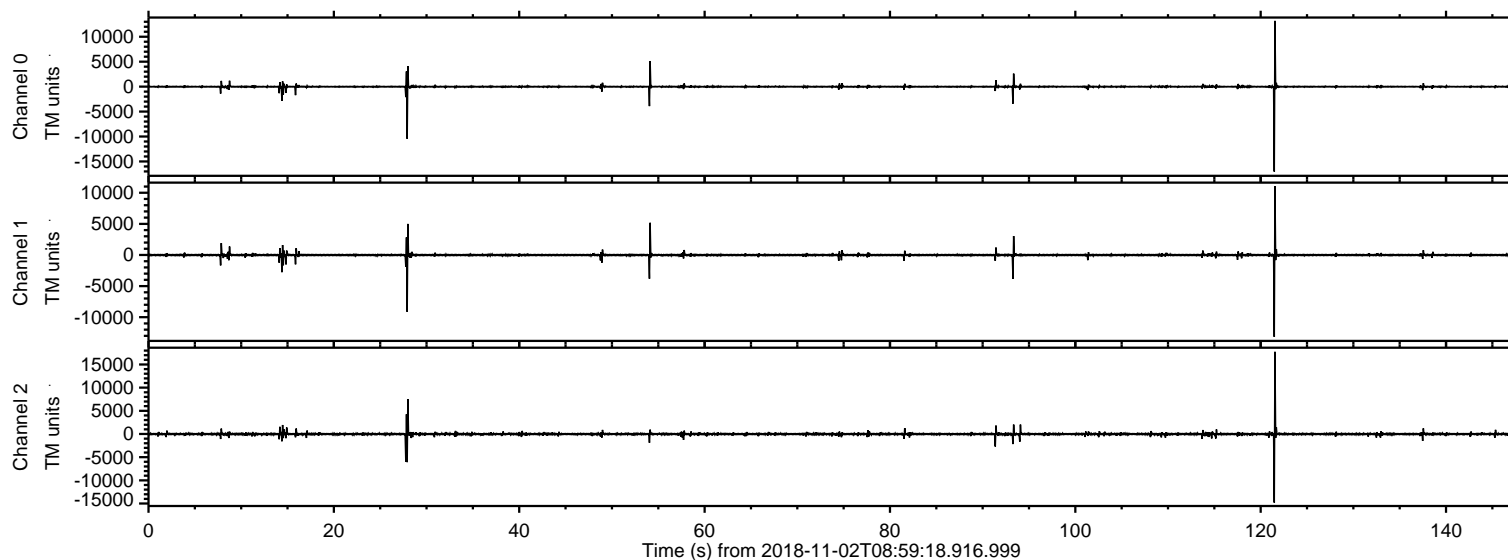


# ELMAVAN 3D WAVEFORMS (Measured data sampled at 50 kHz) 51000 packets of 144 samples from 2018-11-02T08:59:18.916.999.

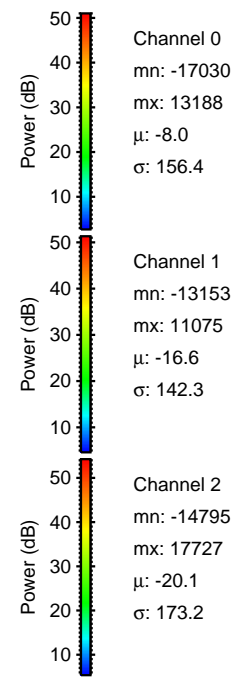
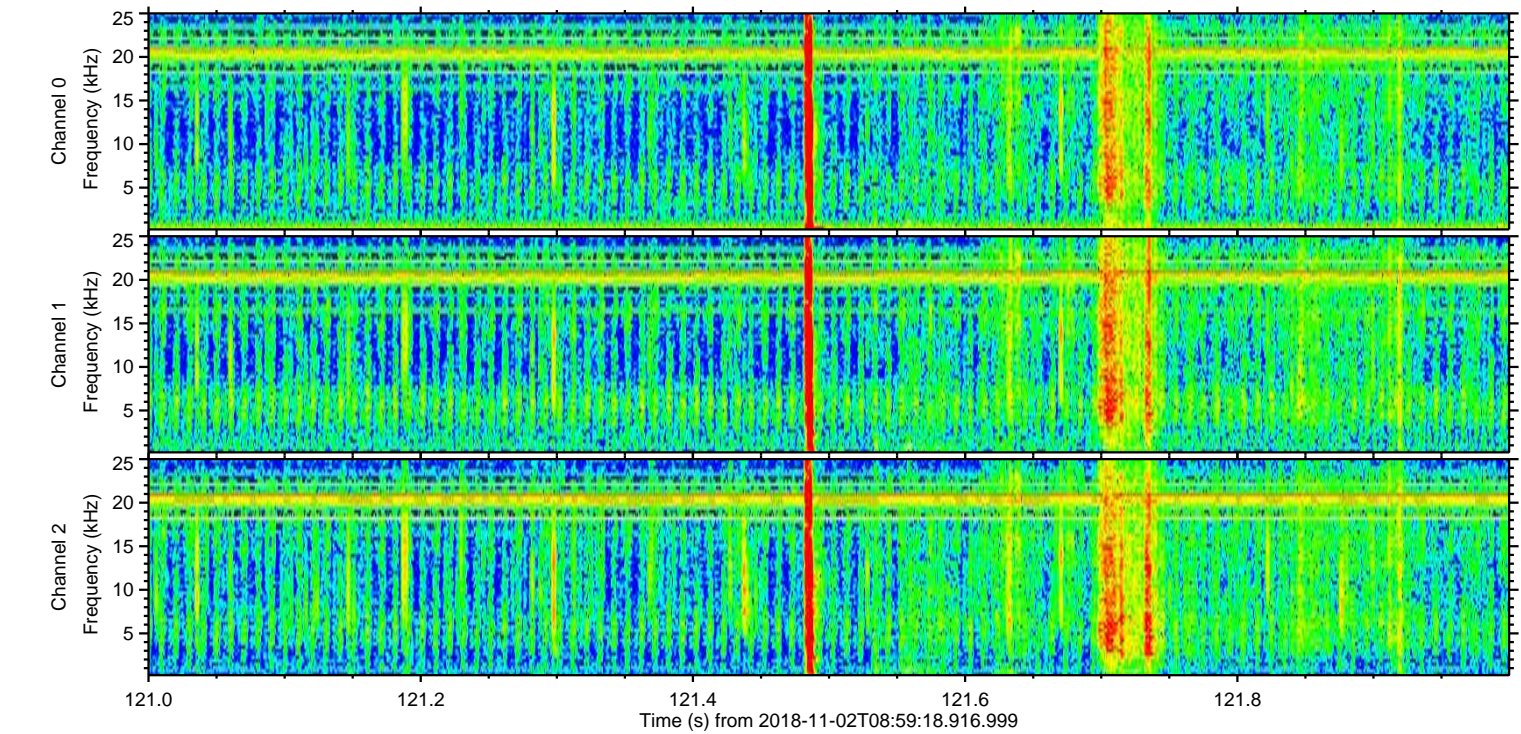
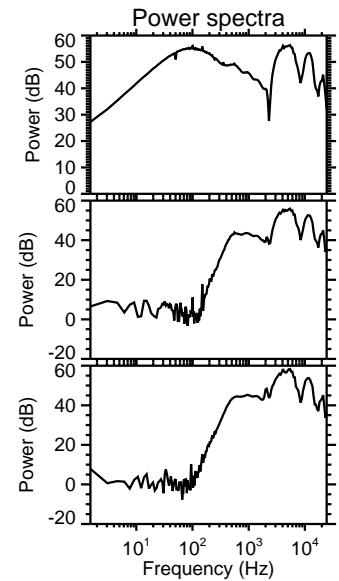
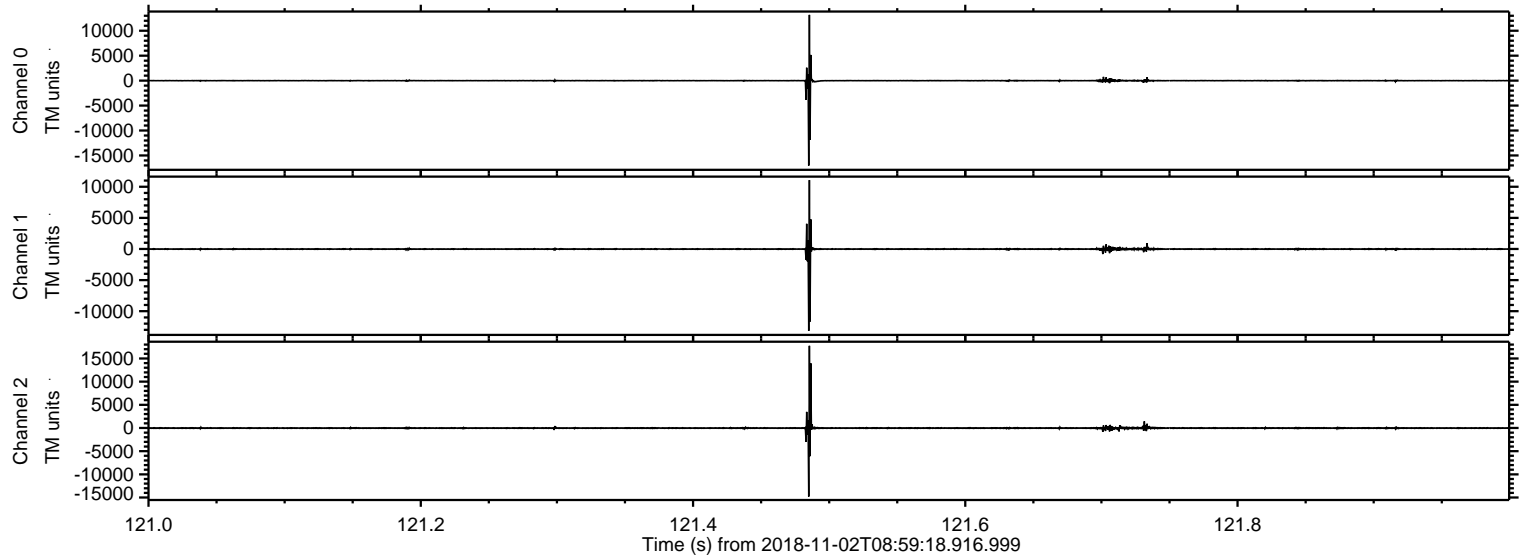
Processed Fri Nov 2 10:07:45 2018 by ELM ver.2012-10-06 from 001\_\_elm20181102\_085917\_\_dat00.bin





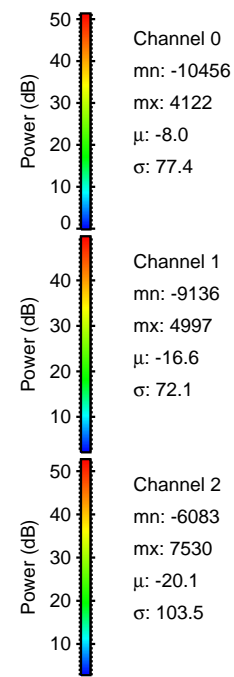
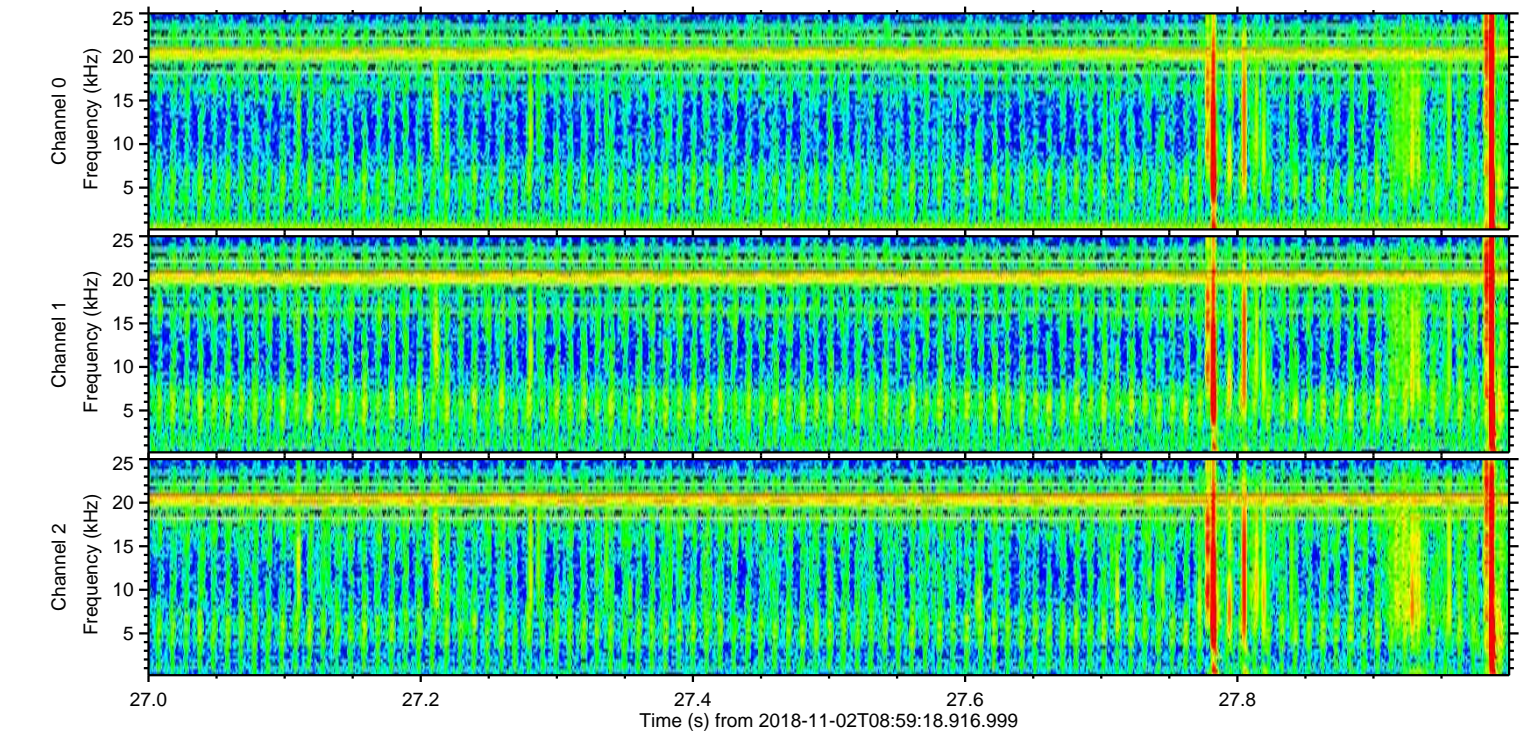
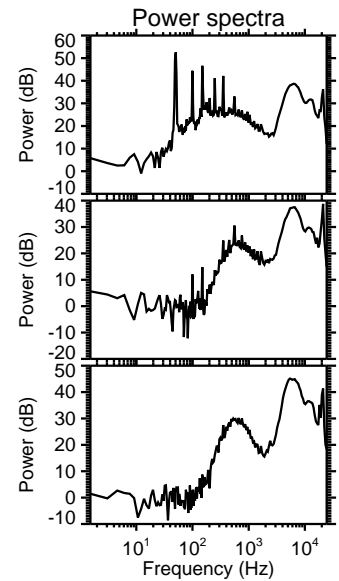
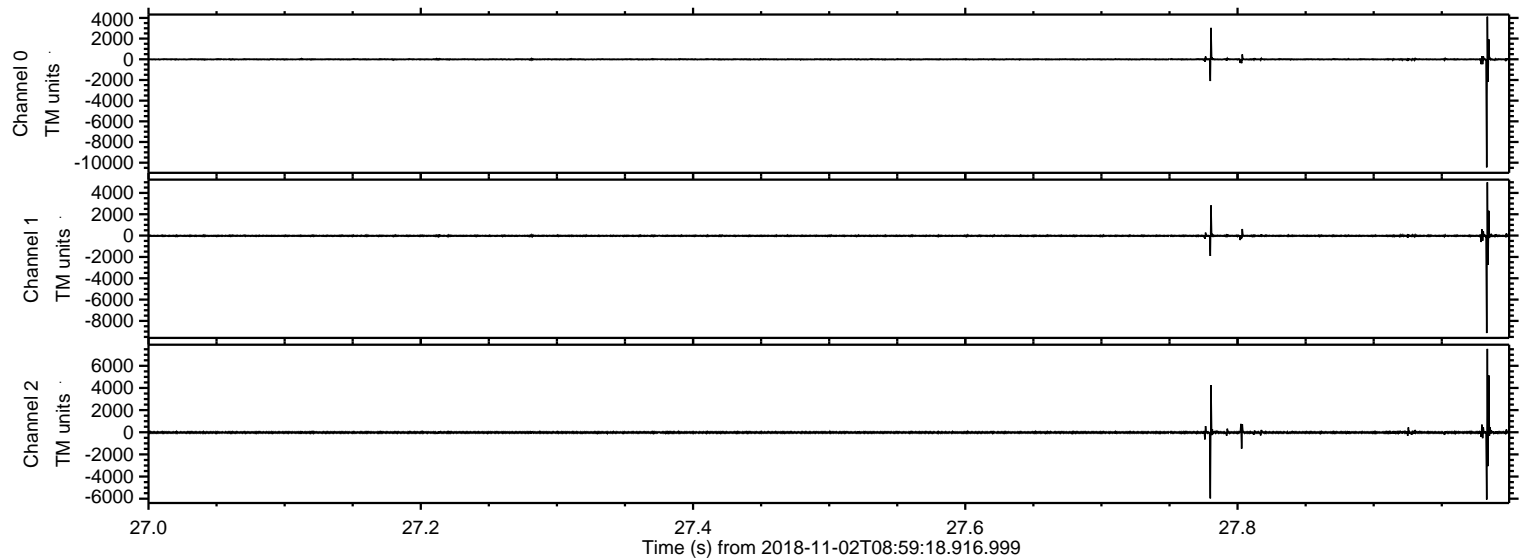
ELMAVAN 3D WAVEFORMS (Measured data sampled at 50 kHz) 51000 packets of 144 samples from 2018-11-02T08:59:18.916.999. Part 122/147

Processed Fri Nov 2 10:07:54 2018 by ELM ver.2012-10-06 from 001\_\_elm20181102\_085917\_\_dat00.bin



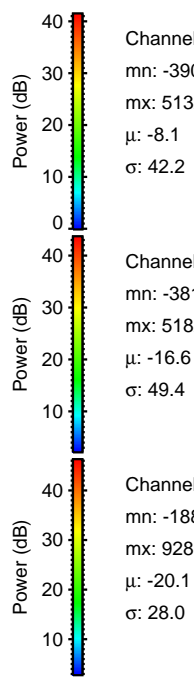
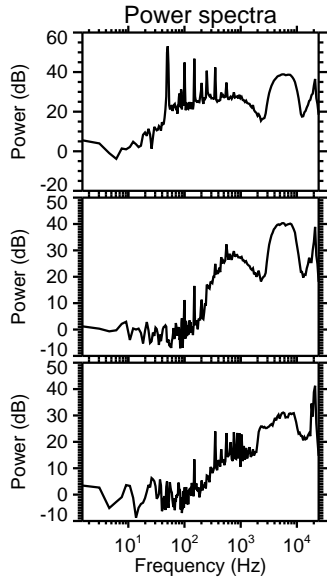
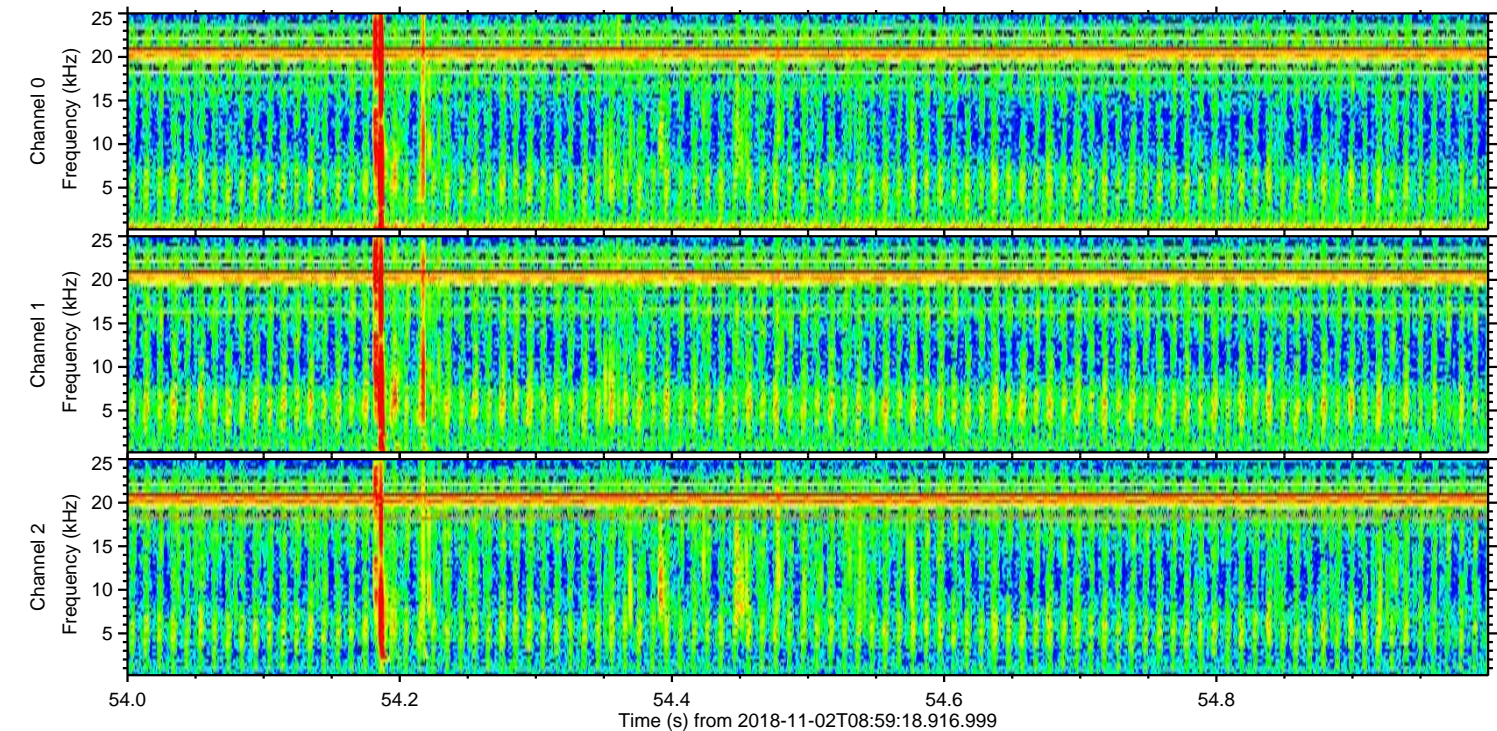
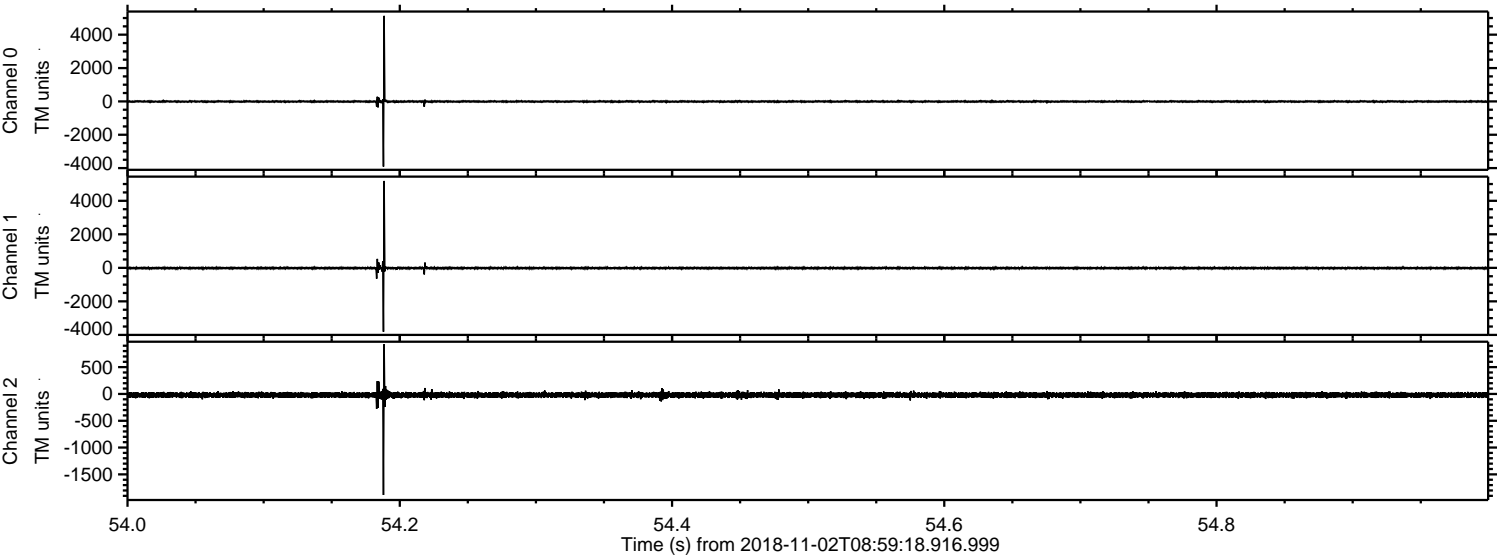


Processed Fri Nov 2 10:07:55 2018 by ELM ver.2012-10-06 from 001\_\_elm20181102\_085917\_\_dat00.bin



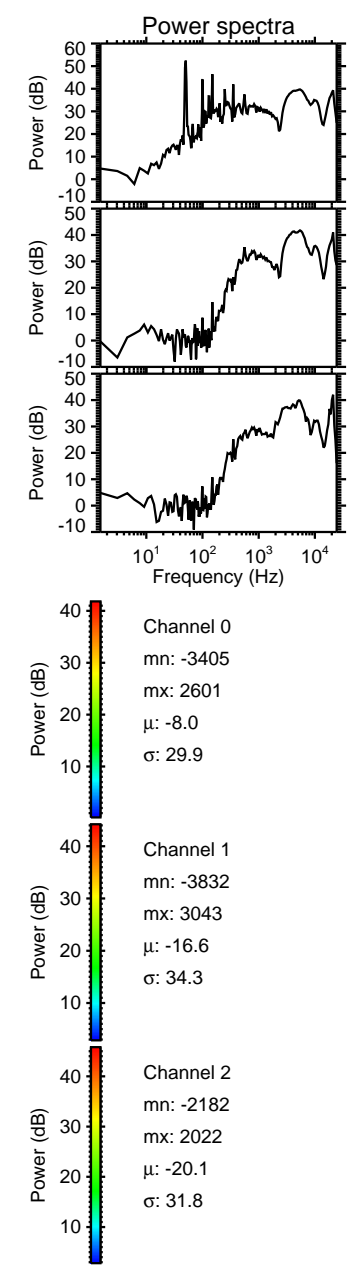
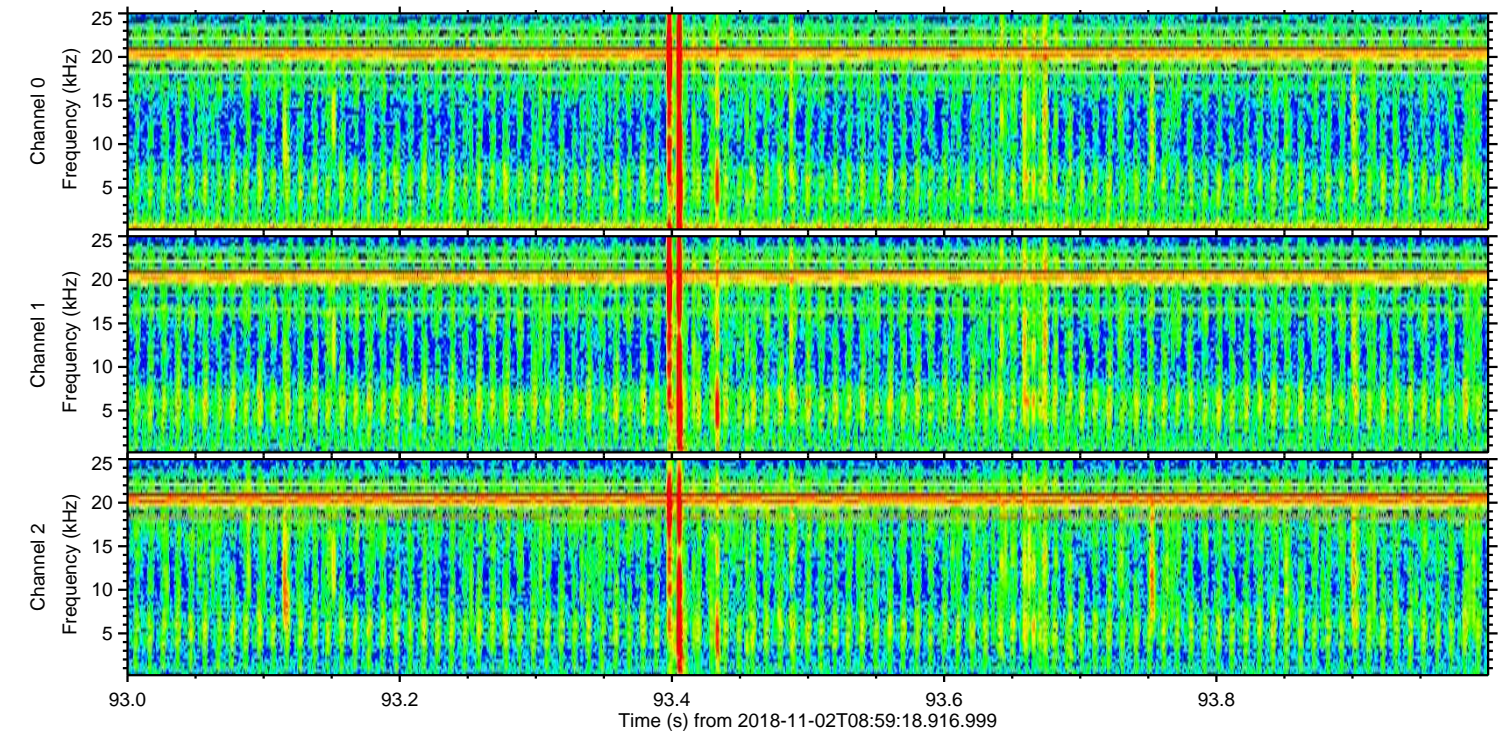
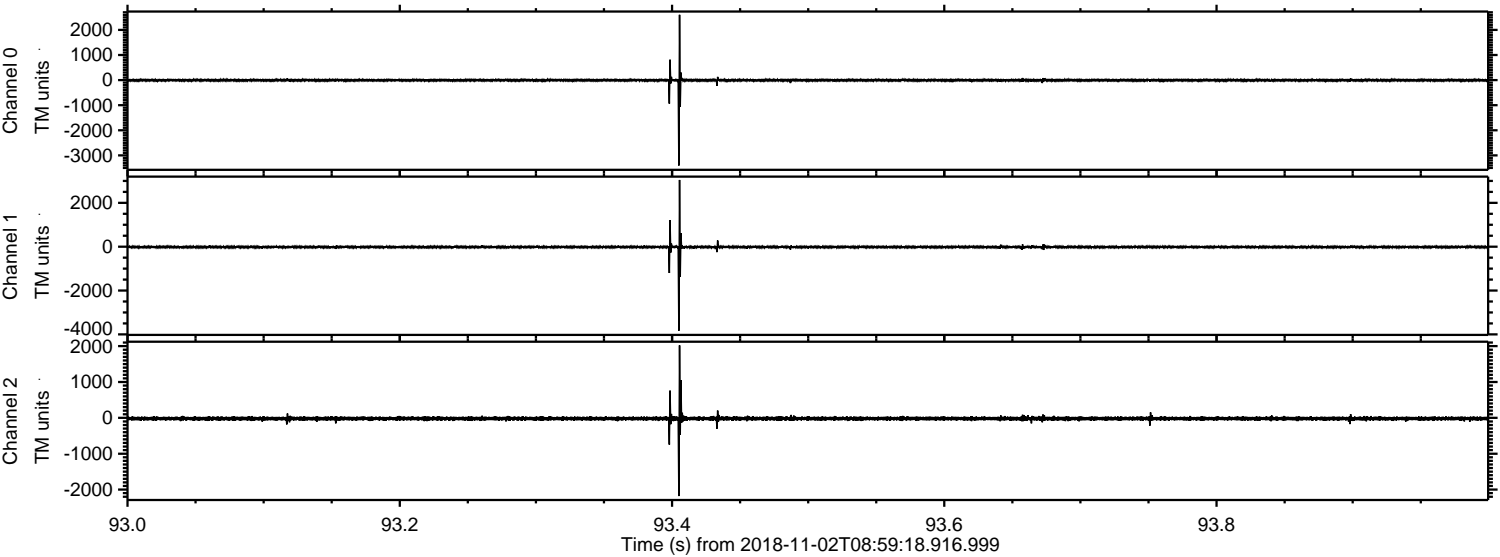


Processed Fri Nov 2 10:07:56 2018 by ELM ver.2012-10-06 from 001\_\_elm20181102\_085917\_\_dat00.bin



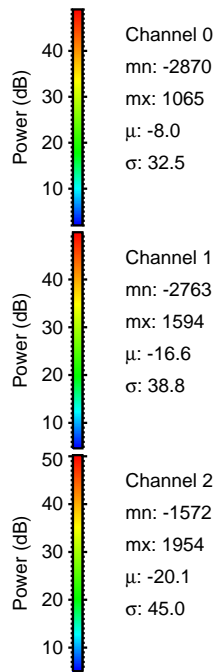
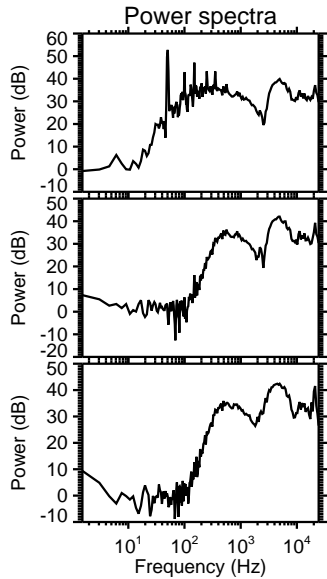
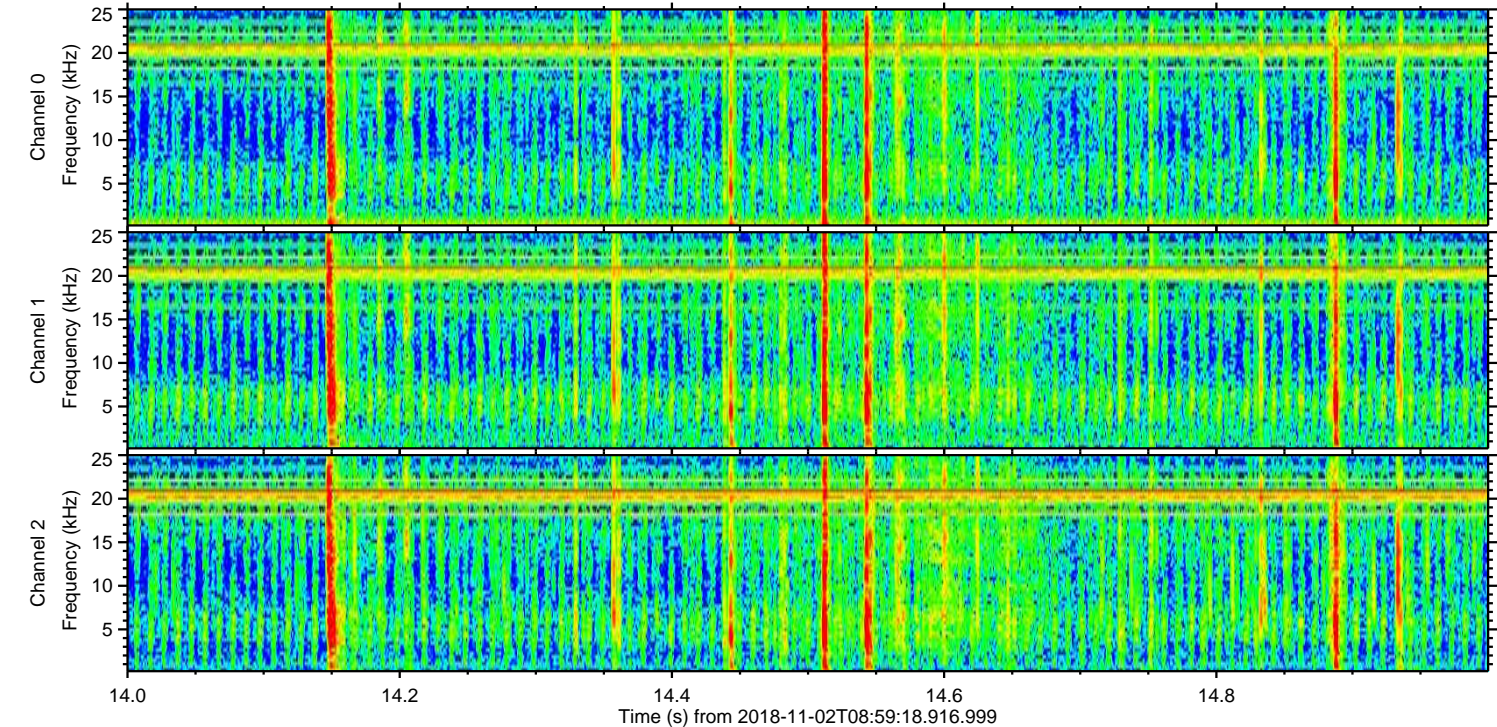
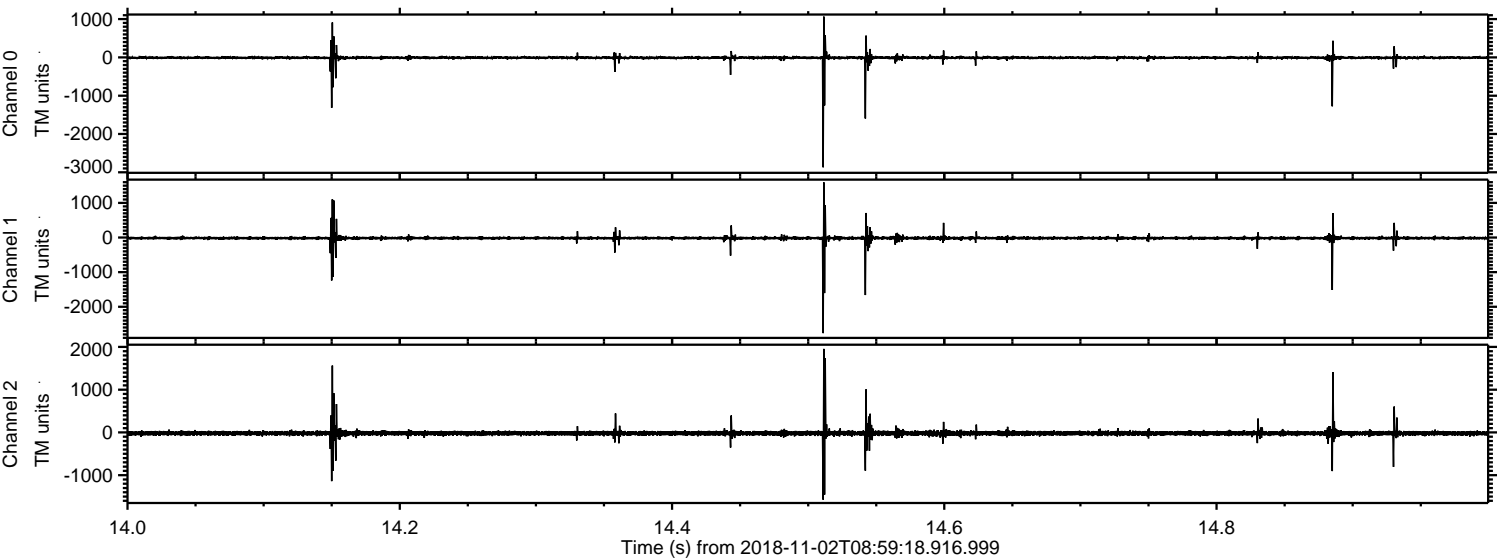


Processed Fri Nov 2 10:07:57 2018 by ELM ver.2012-10-06 from 001\_\_elm20181102\_085917\_\_dat00.bin



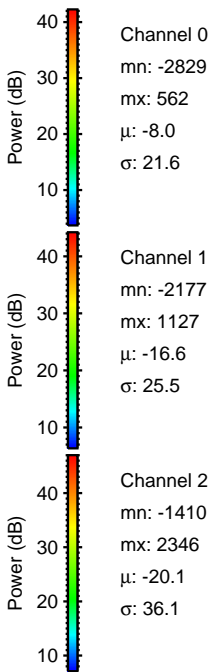
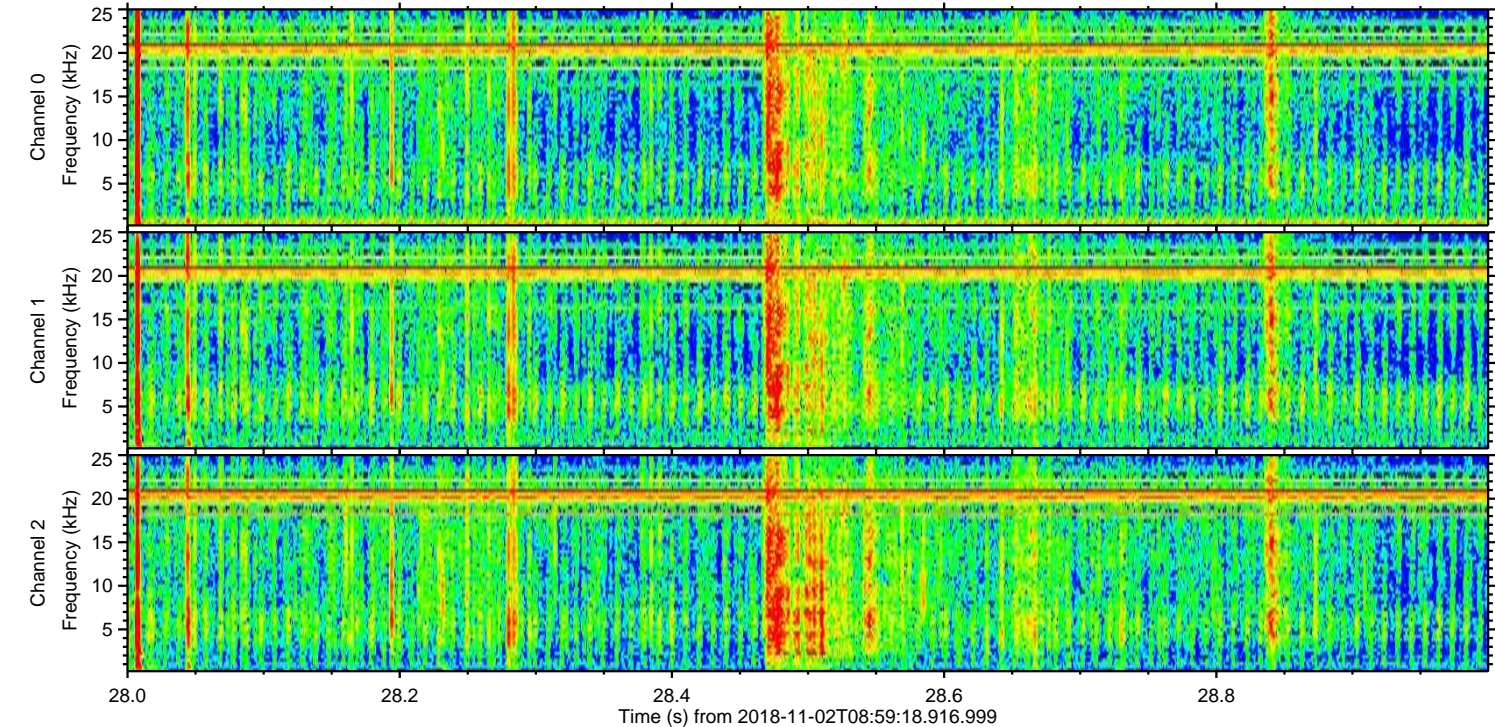
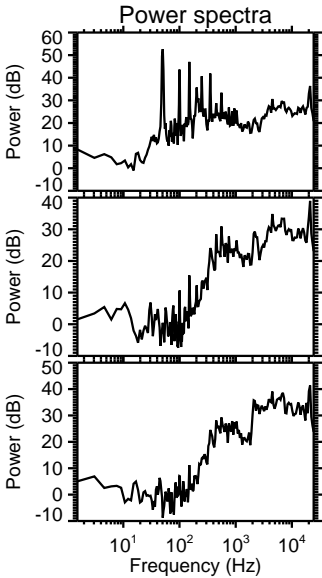
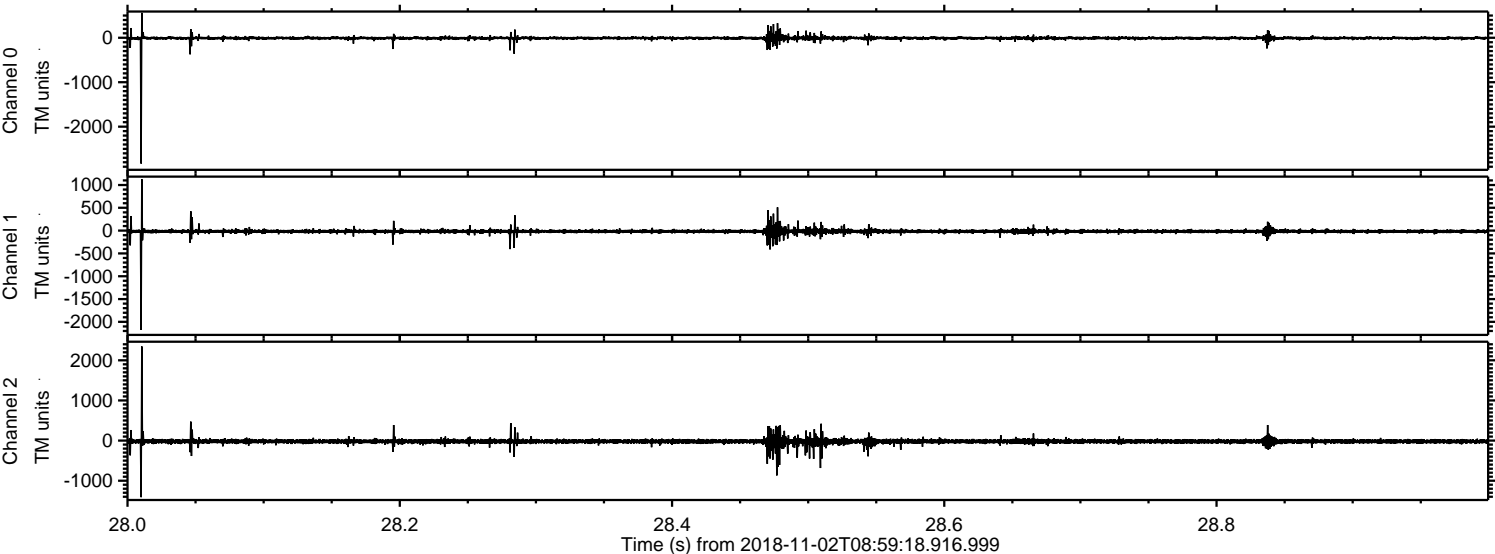


Processed Fri Nov 2 10:07:57 2018 by ELM ver.2012-10-06 from 001\_\_elm20181102\_085917\_\_dat00.bin



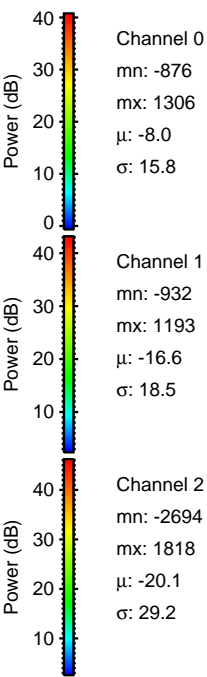
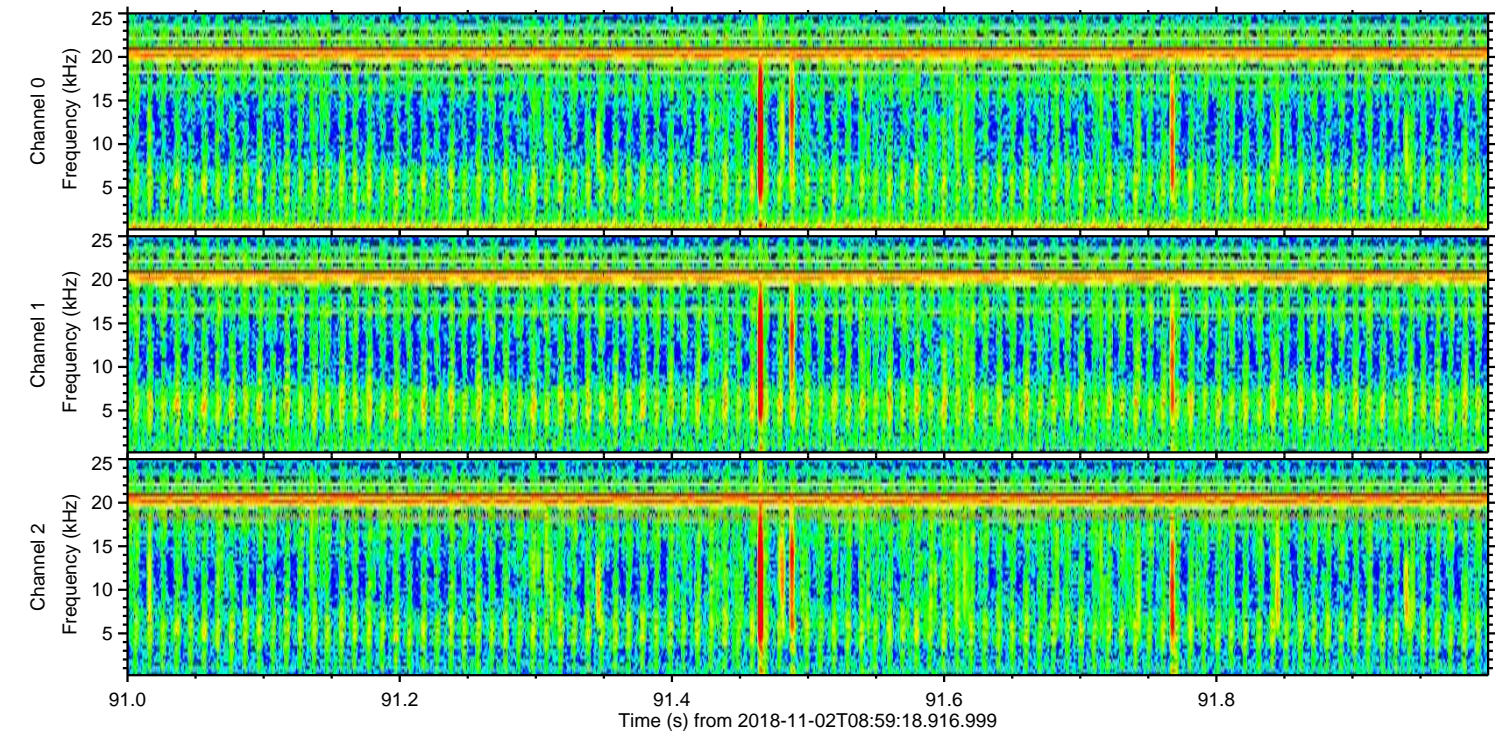
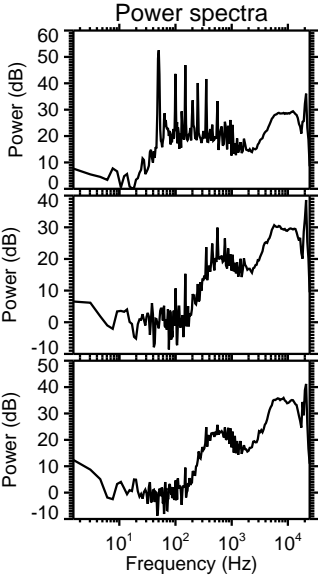
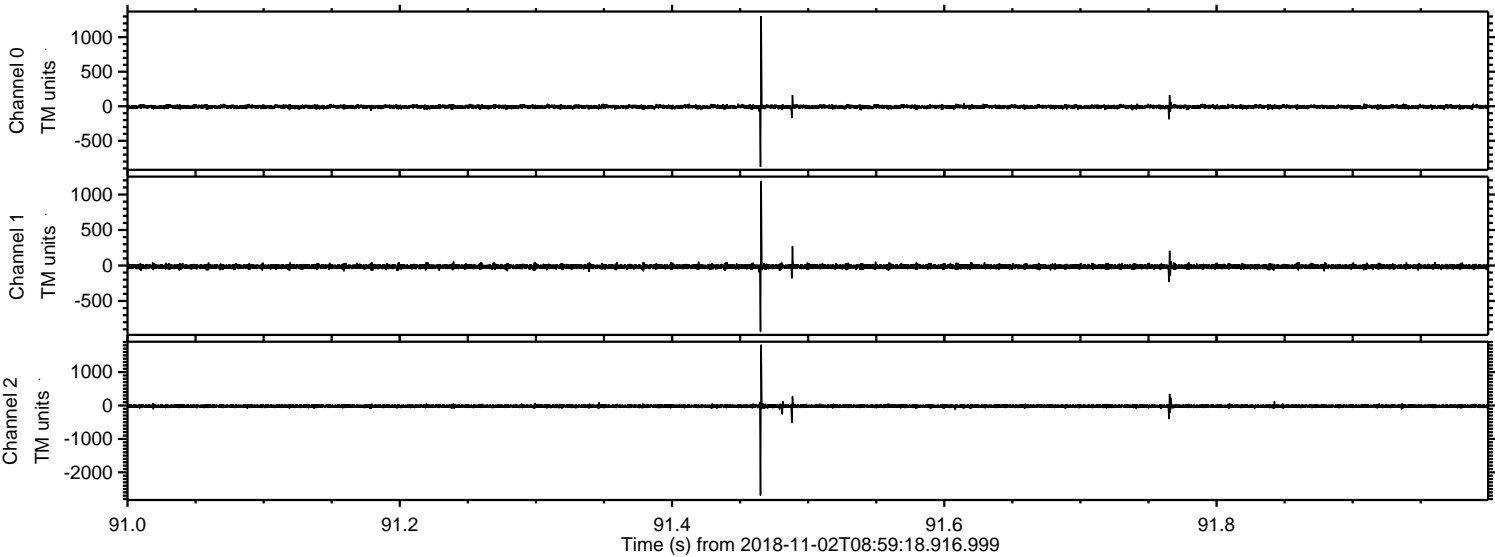


Processed Fri Nov 2 10:07:58 2018 by ELM ver.2012-10-06 from 001\_\_elm20181102\_085917\_\_dat00.bin



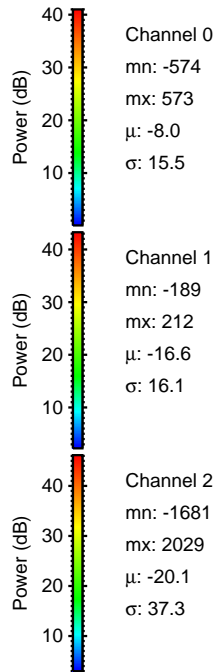
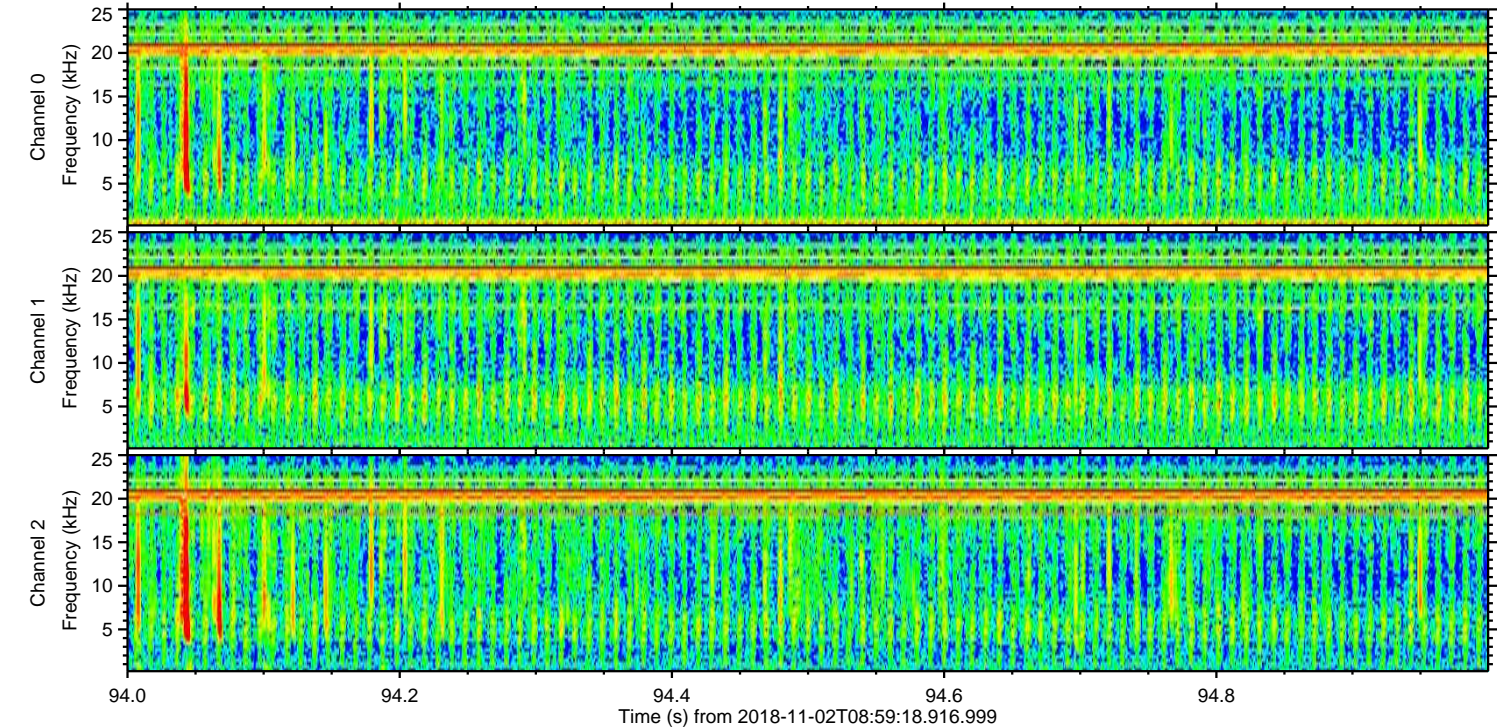
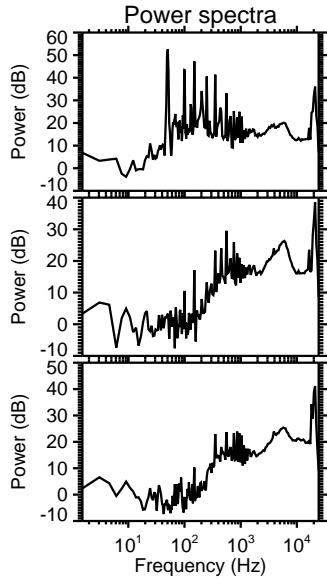
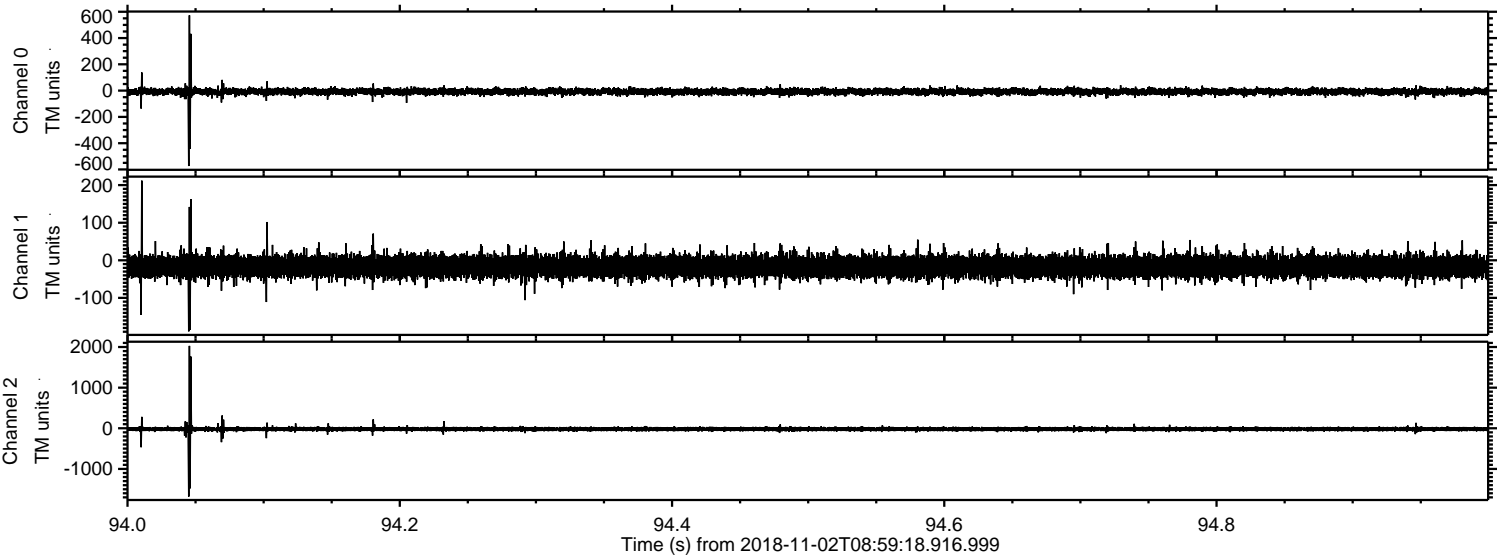


Processed Fri Nov 2 10:07:59 2018 by ELM ver.2012-10-06 from 001\_\_elm20181102\_085917\_\_dat00.bin



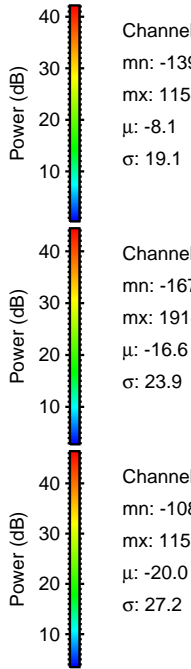
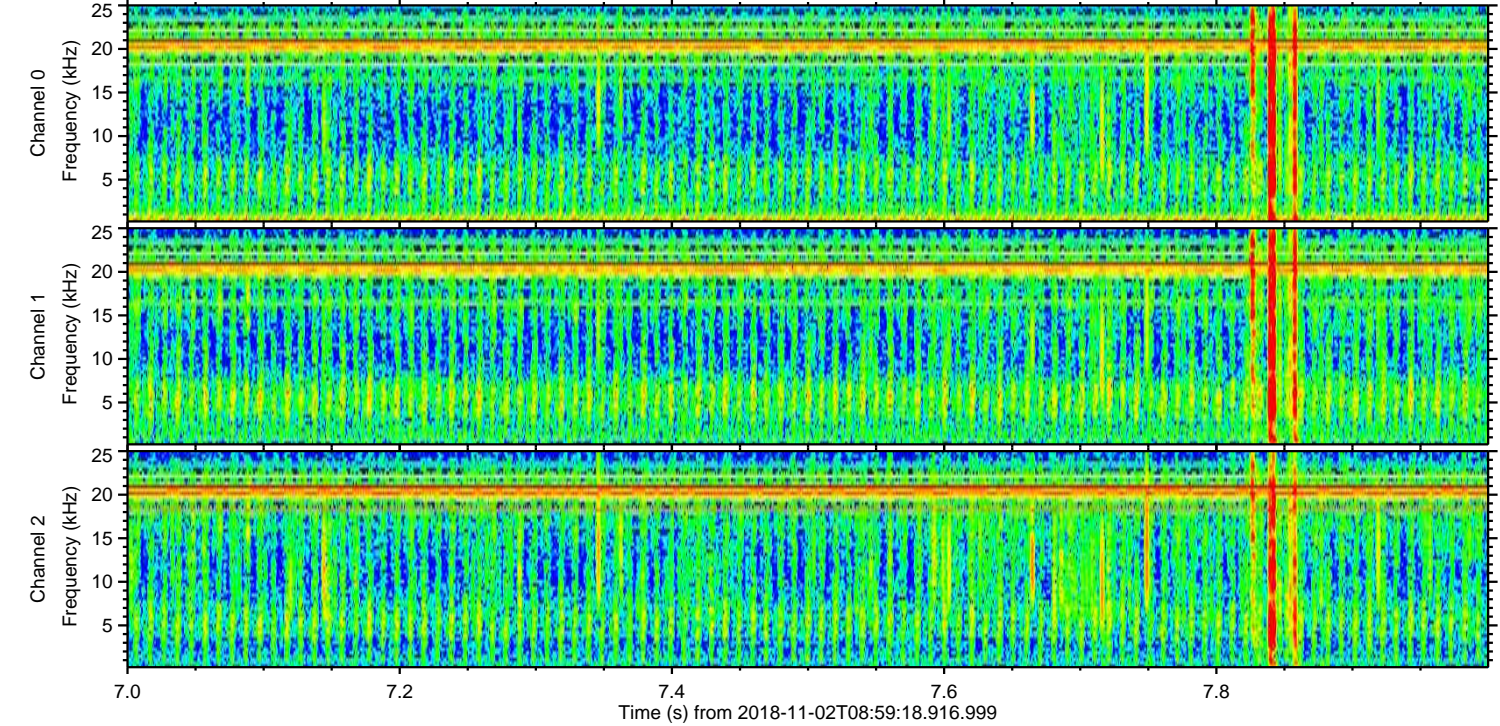
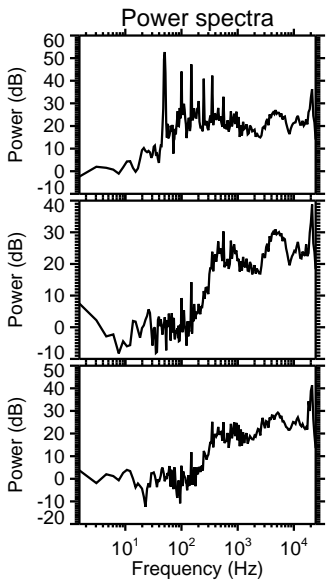
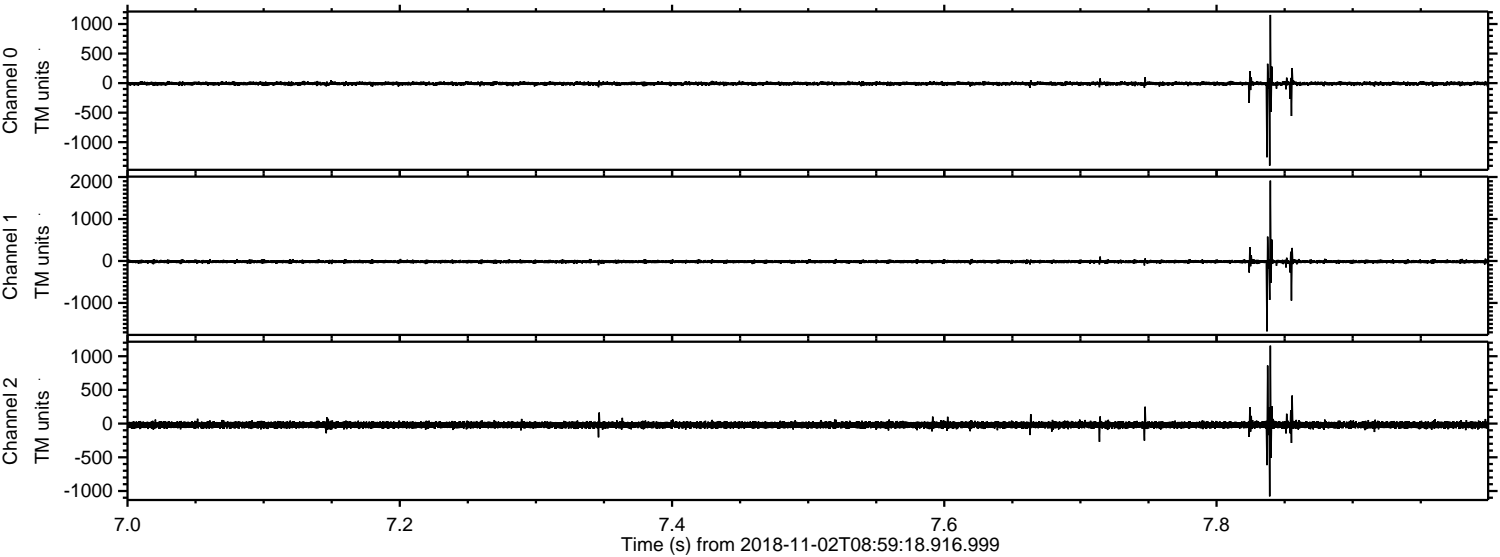


Processed Fri Nov 2 10:08:00 2018 by ELM ver.2012-10-06 from 001\_\_elm20181102\_085917\_\_dat00.bin





Processed Fri Nov 2 10:08:00 2018 by ELM ver.2012-10-06 from 001\_\_elm20181102\_085917\_\_dat00.bin



Channel 0  
mn: -1398  
mx: 1154  
 $\mu$ : -8.1  
 $\sigma$ : 19.1

Channel 1  
mn: -1678  
mx: 1914  
 $\mu$ : -16.6  
 $\sigma$ : 23.9

Channel 2  
mn: -1080  
mx: 1157  
 $\mu$ : -20.0  
 $\sigma$ : 27.2



